

No.0411N000

金輪牌 GOLDEN WHEEL

Single Needle Lockstitch Super Long Cylinder-Bed Bottom Feed
Sewing Machine For Heavy Duty Materials

CS-411N □

零件分解図 PARTS LIST

① 2016.03.30 P16.P17

② 2016.05.18

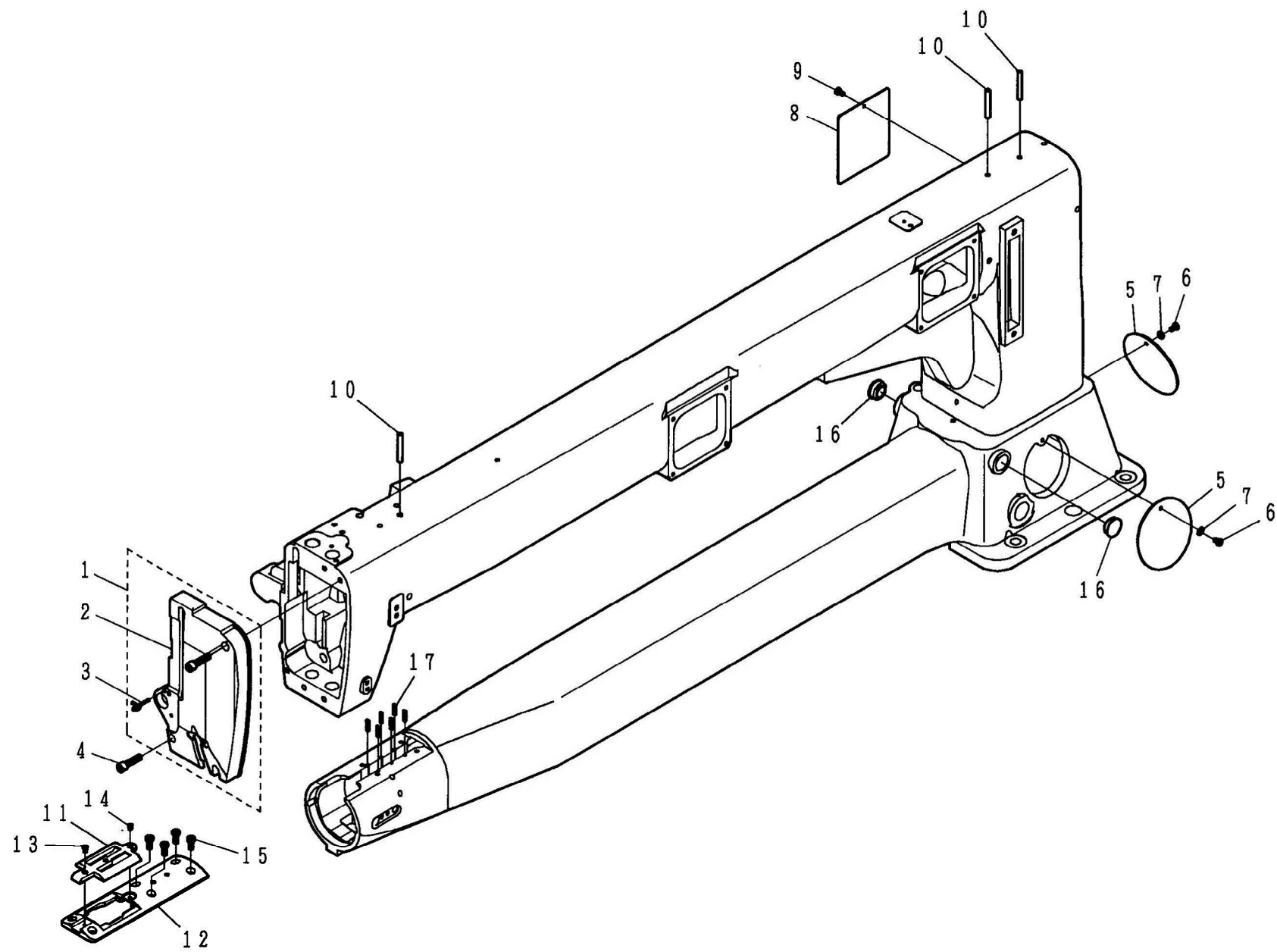
③ 2016.08.22 P26.P27

CHEE SIANG INDUSTRIAL CO.,LTD.

MODEL : CS-411N

索引	INDEX	PAGE
A. 本體關係	FRAME & MISCELLANEOUS COVER COMPONENTS	2-3
B. 上軸關係	MAIN SHAFT COMPONENTS	4-5
C. 針棒·押腳關係	NEEDLE BAR & PRESSURE BAR MECHANISM COMPONENTS	6-7
D. 送料關係	FEED MECHANISM COMPONENTS	8-13
E. 下軸關係	HOOK DRIVING SHAFT COMPONENTS	14-17
F. 糸調子關係	TENSION POST COMPONENTS	18-19
G. 捲線器·線掛關係	THREAD WINDER & THREAD GUIDE COMPONENTS	20-23
H. 膝上關係	KNEE LIFTER COMPONENTS	24-25
I. 皮帶套關係	BELT COVER COMPONENTS	26-27
J. 線架關係	THREAD STAND COMPONENTS	28-29
K. 針車板關係	TABLE COMPONENTS	30-31
L. 附件	ACCESSORIES PARTS COMPONENTS	32-33
M. 零件號碼與頁數對照表	NUMERICAL PARTS-LIST	34-36

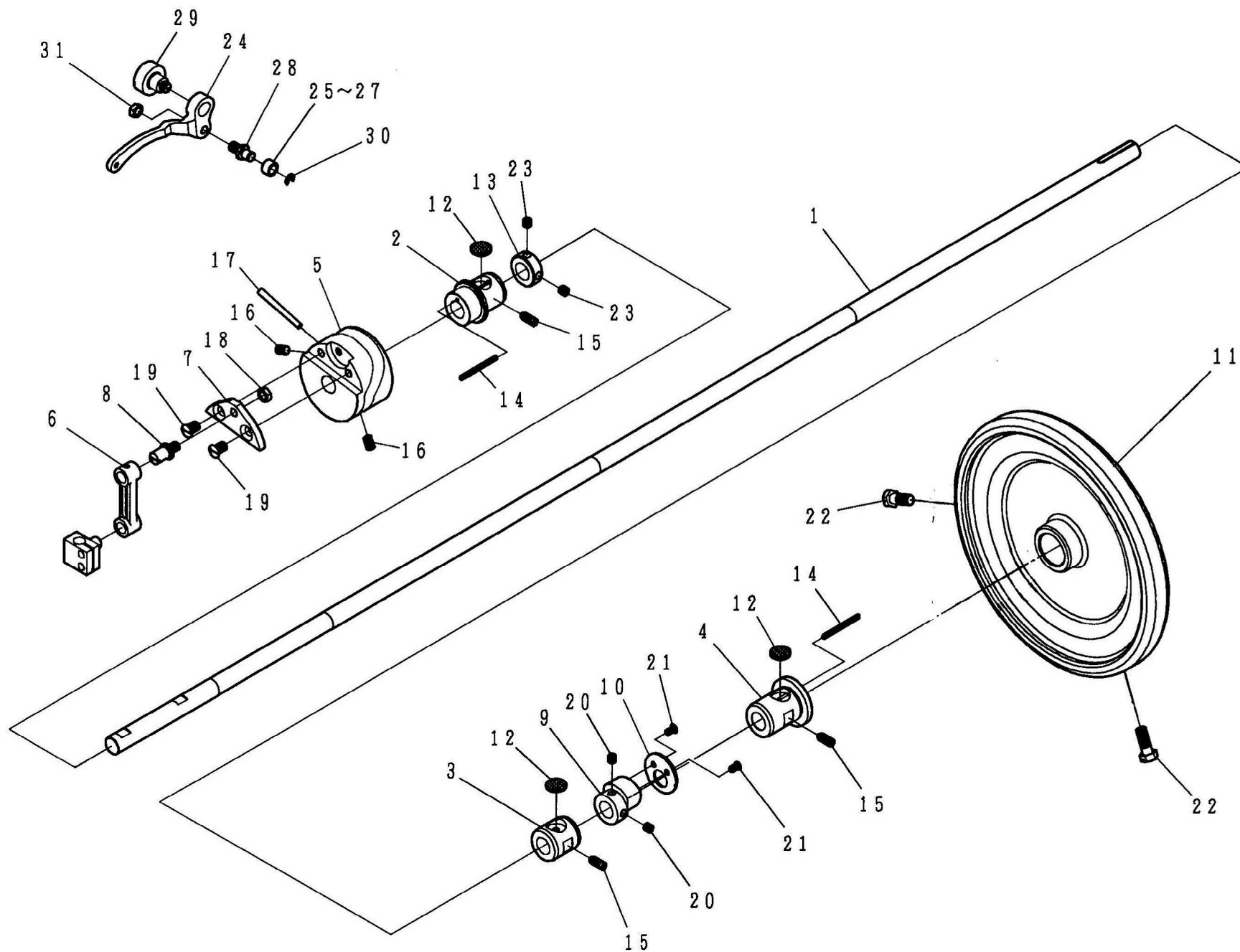
A . CS - 4 1 1 N 本體關係 FRAME & MISCELLANEOUS COVER COMPONENTS



A. CS-411N 本體關係 FRAME & MISCELLANEOUS COVER COMPONENTS

REF.No	NOTE	零件號碼 Part No.	零件名稱	Name of Part	件數 Q'TY	備註 Remarks
1		4110111005	面板(組)	Face Plate Asm.	1	
2		4110111000	面板	Face Plate	(1)	
3		4710113300	線掛	Thread Guide	(1)	
4		ZSB15021	螺絲	Screw 15/64-28*23.5	2	
5		4710111100	底座窓板(A)	Side Cover,A	2	
6		ZSB09047	螺絲	Screw 9/64-40*7	2	
7		WC049001	墊圈	Washer	2	
8		4110111200	窓板(B)	Side Cover,B	1	
9		ZSB09047	螺絲	Screw 9/64-40*7	1	
10		4710911500	油管	Oil Pipe	3	
11		4110111300	針板	Throat Plate	1	
12		4110110600	針板台	Throat Plate Base	1	
13		ZSB09029	螺絲	Screw 9/64-40*6	1	
14		ZSB09012	螺絲	Screw 9/64-40*4.5	1	
15		ZSB12002	螺絲	Screw 3/16-28*12	4	
16		A1013-0B	油蓋	Rubber Plug	2	
17		XA200025	油線	Oil Wick	6	

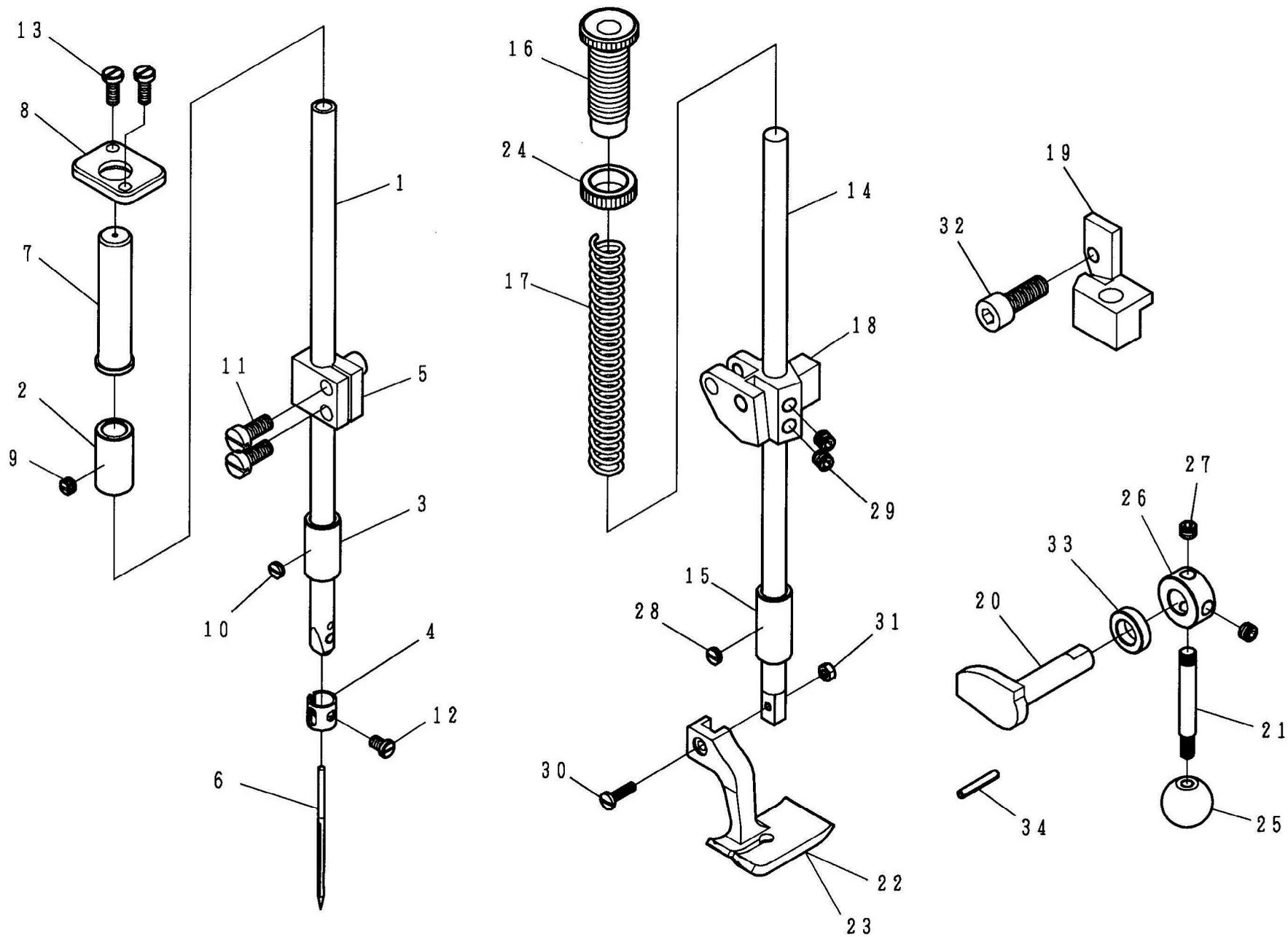
B.CS-411N 上軸関係 MAIN SHAFT COMPONENTS



B. CS-411N 上軸關係 MAIN SHAFT COMPONENTS

REF.No	NOTE	零件號碼 Part No.	零件名稱	Name of Part	件數 Q'TY	備註 Remarks
1		4610120100	上軸	Main Shaft	1	
2		4710120201	上軸套管(左)	Main Shaft Bushing,Front	1	
3		4610120300	上軸套管(中)	Main Shaft Bushing,Center	1	
4		4710120400	上軸套管(右)	Main Shaft Bushing,Rear	1	
5		4710191301	天秤凸輪	Thread Take Up Cam	1	
6		4710121000	針棒連接器	Needle Bar Crank Rod	1	
7		4710121100	針棒連接座	Crank Plate	1	
8		4710121300	針棒連接軸	Needle Bar Crank Shaft	1	
9		4710122000	偏心輪	Feed Cam	1	
10		4110122100	側板	Side Plate	1	
11		4710122301	皮帶輪	Hand Wheel Asm.	1	
12		4710122500	油棉	Felt	3	
13		4710122601	上軸定環	Thrust Collar	1	
14		XA200160	油線	Oil Wick	2	
15		ZSA15010	螺絲	Screw 15/64-28*15	3	
16		ZSH16004	螺絲	Screw 1/4-40*10	2	
17		YB040045	推拔銷	Tapered Pin 4.0X45	1	
18		ZSL18001	螺帽	Nut 9/32-28	1	
19		ZSC18001	螺絲	Screw 9/32-28*11	2	
20		ZSH15001	螺絲	Screw 15/64-28*6	2	
21		ZSC11007	螺絲	Screw 11/64-40*8.5	2	
22		ZSD20003	螺絲	Screw 5/16-24*21	2	
23		ZSA16025	螺絲	Screw 1/4-40*6	2	
24		4710190100	天秤	Thread Take Up Lever	1	
25		4710190200	滾仔	Roller	1	
26	#01	4710190220	滾仔	Roller	(1)	
27	#01	4710190230	滾仔	Roller	(1)	
28		4710190300	滾仔固定軸	Roller Stud	1	
29		ZSG20012	螺絲	Hinge Screw	1	
30		RE000040	E型扣環	E-Shaped Snap Ring (4mm)	1	
31		ZSL18001	螺帽	Nut 9/32-28	1	

Note (注記) #01. . . . Selective part 選擇部品



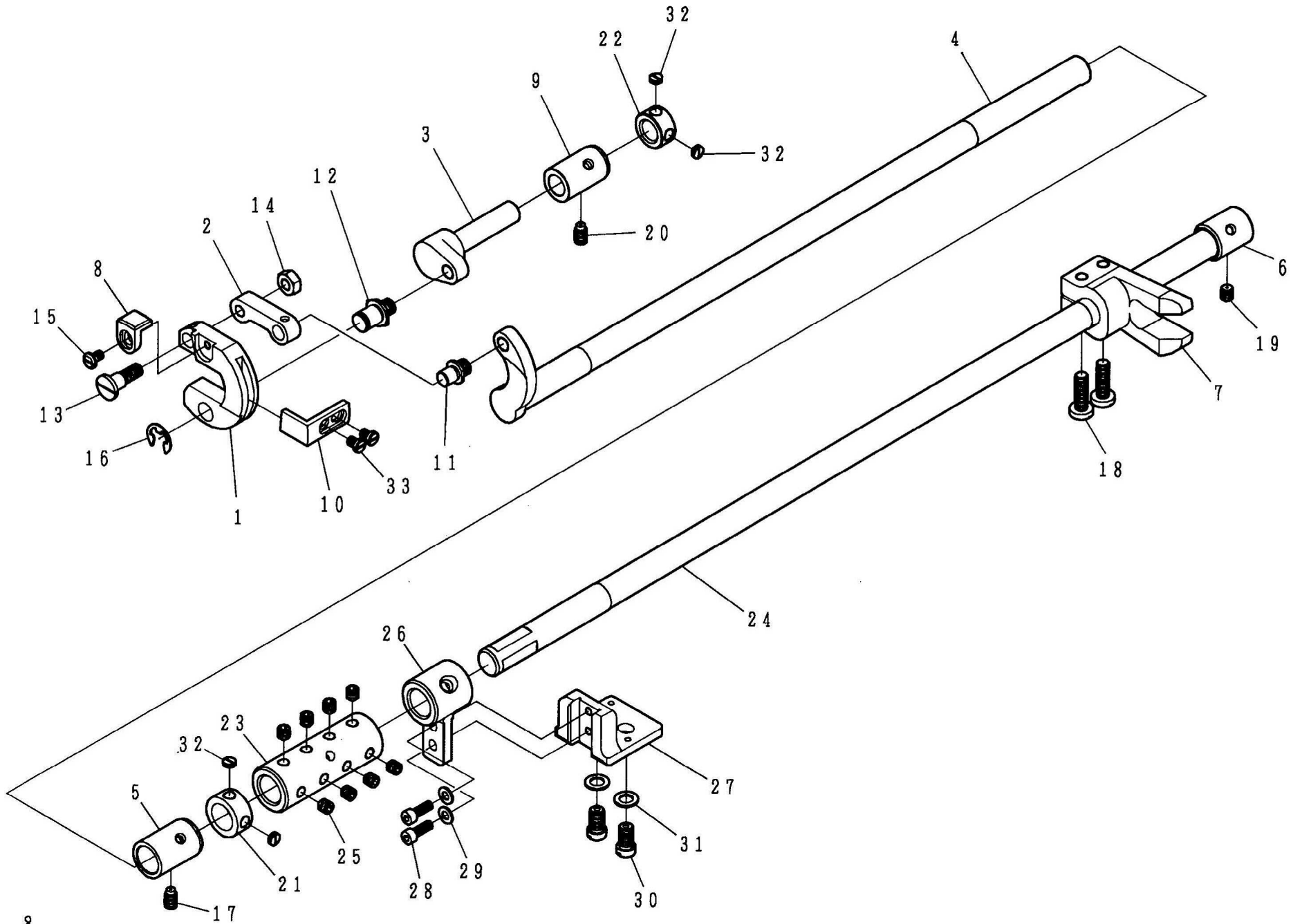
C. CS-411N 針棒·押脚關係 NEEDLE BAR & PRESSURE BAR MECHANISM COMPONENTS

REF.No	NOTE	零件號碼 Part No.	零件名稱	Name of Part	件數 Q'TY	備註 Remarks
1		4710140100	針棒	Needle Bar	1	
2		4710140400	針棒套管(上)	Needle Bar Bushing,Upper	1	
3		4710140500	針棒套管(下)	Needle Bar Bushing,Lower	1	
4		4710140700	針棒線掛	Needle Bar Thread Guide	1	
5		4710140900	針棒鉗	Needle Bar Connecting	1	
6		IN794#230	針	Needle (794 Nm=230)	1	
7		4710141200	針棒套蓋	Needle Bar Cover	1	
8		4710141300	針棒套蓋固定座	Cover Plate	1	
9		ZSA15013	螺絲	Screw 15/64-28*4	1	
10		ZSA16039	螺絲	Screw 1/4-40*2.5	1	
11		ZSB15032	螺絲	Screw 15/64-28*14	2	
12		ZSB11022	螺絲	Screw 11/64-40*7	1	
13		ZSB11076	螺絲	Screw 11/64-40*12	2	
14		4710150100	押棒	Presser Bar	1	
15		4710150200	押棒套管	Presser Bar Bushing	1	
16		4710150300	螺絲	Screw	1	
17		4710150400	壓縮彈簧	Spring	1	
18		4710150500	押棒堤昇器	Presser Bar Guide Bracket	1	
19		4710150600	壓棒固定座	Hand Lifter Link	1	
20		4710150700	押棒偏心軸	Hand Lifter Cam	1	
21		4710150800	押棒堤桿	Hand Lifter Lever	1	
22		4110151000	押脚(右段5mm用)	Presser Foot	1	
23	#01	41101510W0	押脚(左段5mm用)	Presser Foot	(1)	
24		4710151500	螺帽	Nut	1	
25		4710151600	押棒堤桿握	Grip	1	
26		4710151800	定環	Thrust Collar	1	
27		ZSH16005	螺絲	Screw 1/4-40*4.5	2	
28		ZSA16039	螺絲	Screw 1/4-40*2.5	1	
29		ZSH16001	螺絲	Screw 1/4-40*6	2	
30		ZSB09061	螺絲	Screw 9/64-40*13.5	1	
31		ZSL09001	螺帽	Nut 9/64-40	1	
32		ZSJ16001	螺絲	Screw 1/4-40*6.5	1	
33		WA100009	定環	Collar	1	
34		YD030020	彈簧銷	Spring Pin 3X20	1	

Note (注記) #01..... Optional part

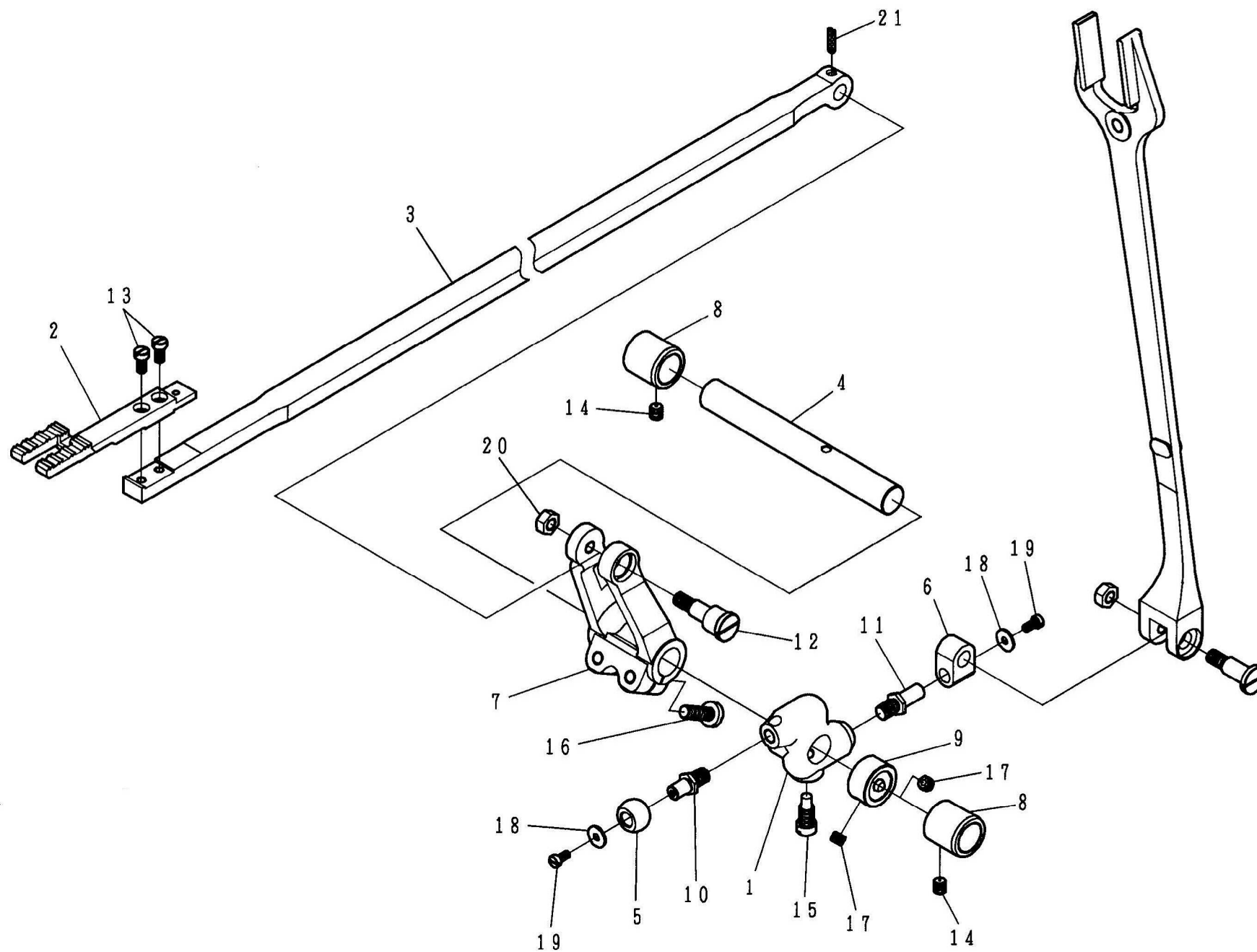
特別注文部品

D . CS - 4 1 1 N 送料関係 (1 / 3) FEED MECHANISM COMPONENTS (1 / 3)



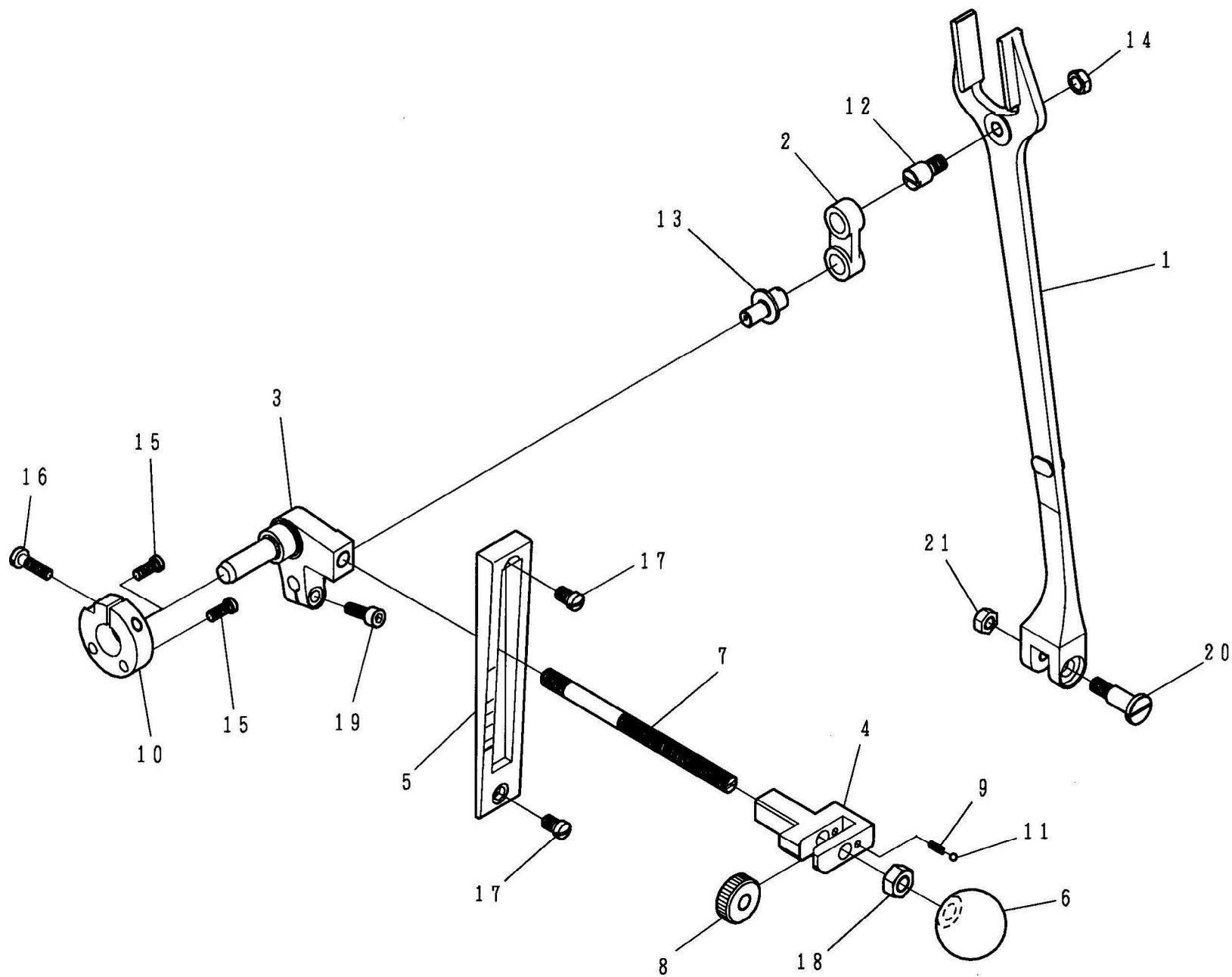
D. CS-411N 送料關係 (1/3) FEED MECHANISM COMPONENTS(1/3)

REF.No	NOTE	零件號碼 Part No.	零件名稱 Name of Part	件數 Q'TY	備註 Remarks
1		4110160100	送料台-----Feed Bar-----	1	
2		4710160200	送料台連接棒----Feed Bar Link-----	1	
3		4710160300	上下送料軸-----Driving Shaft-----	1	
4		461016040A	搖動軸-----Feed Rocker Shaft-----	1	
5		4710160600	搖動軸套管(前)---Bushing,Front-----	1	
6		4710160700	搖動軸套管(後)---Bushing,Rear-----	1	
7		4110169300	送料變換腕 B----Feed exchange Arm B-----	1	
8		4110166100	送料支持板-----Feed Support Plate-----	1	
9		4710161700	上下送料軸套管---Driving Shaft Metal-----	1	
10		4110162100	送料台押板-----Feed Bar Presser-----	1	
11		ZSK20007	螺絲-----Hinge Screw-----	1	
12		ZSK20009	螺絲-----Hinge Screw-----	1	
13		ZSG16024	螺絲-----Hinge Screw-----	1	
14		ZSL16004	螺帽-----Nut 1/4-24-----	1	
15		ZSB11041	螺絲-----Screw 11/64-40*7-----	1	
16		RE000080	E型扣環-----E-Shaped Snap Ring (8mm)-----	1	
17		ZSA15037	螺絲-----Screw 15/64-28*10.5-----	1	
18		ZSB16005	螺絲-----Screw 1/4-24*20-----	2	
19		ZSA15028	螺絲-----Screw 15/64-28*7-----	1	
20		ZSA15037	螺絲-----Screw 15/64-28*10.5-----	1	
21		LG4044-0A	定環-----Thrust Collar-----	1	
22		LG4014-0A	定環-----Thrust Collar-----	1	
23		461016040C	水平送料軸繼手---Horizontal Shaft Link-----	1	
24		461016040B	水平送料軸-----Horizontal Shaft-----	1	
25		ZMH06008	螺絲-----Screw M6×1.0*6-----	8	
26		4610160600	下軸支持架-----Lower Shaft Bear Up Pedestal-----	1	
27		4610160700	下軸支持固定架---Lower Shaft Bear Up Pedestal-----	1	
28		ZSJ11001	螺絲-----Screw 11/64-40*12-----	2	
29		WA049003	平墊圈-----Washer-----	2	
30		ZSB18004	螺絲-----Screw 9/32-28*12-----	2	
31		WA079003	平墊圈-----Washer-----	2	
32		ZSA16039	螺絲-----Screw 1/4-40*2.5-----	4	
33		ZSB11035	螺絲-----Screw 11/64-40*6-----	2	



D. CS-411N 送料關係 (2/3) FEED MECHANISM COMPONENTS(2/3)

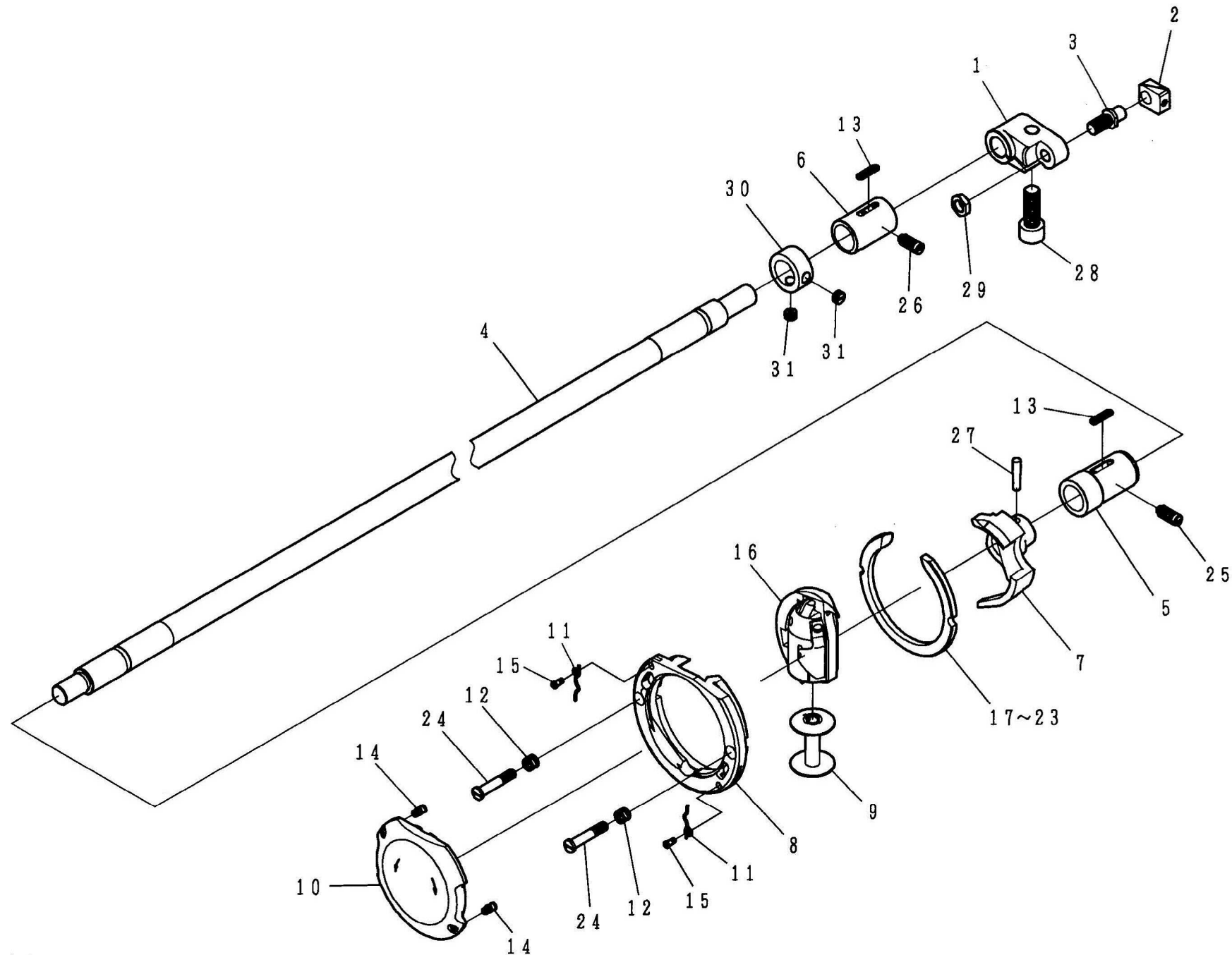
REF.No	NOTE	零件號碼 Part No.	零件名稱	Name of Part	件數 Q'TY	備註 Remarks
1		4110160800	搖動曲軸	Feed Rocker Shaft Crank	1	
2		4110161400	送料齒	Feed Dog	1	
3		4110165100	送料橫桿	Rod	1	
4		4110167800	送料變換軸	Feed Exchange Shaft	1	
5		4110168500	球形滑塊	Spherical Block	1	
6		4110168600	連結繼手	Connecting Link	1	
7		4110169200	送料變換腕 A	Feed exchange Arm A	1	
8		6120160600	套管	Bushing	2	
9		E4044-0A	定環	Thrust Collar	1	
10		ZSK18028	螺絲	Hinge Screw	1	
11		ZSK18029	螺絲	Hinge Screw	1	
12		ZSG16031	螺絲	Hinge Screw	1	
13		ZSB11011	螺絲	Screw 11/64-40*9	2	
14		ZSA15028	螺絲	Screw 15/64-28*7	2	
15		ZSB18001	螺絲	Screw 9/32-28*16	1	
16		ZSB16005	螺絲	Screw 1/4-24*20	2	
17		ZSA16010	螺絲	Screw 1/4-40*4.5	2	
18		WH203001	平墊圓	Washer	2	
19		ZSB09007	螺絲	Screw 9/64-40*7.5	2	
20		ZSL16003	螺帽	Nut 1/4-24	1	
21		XA200025	油線	Oil Wick	1	



D. CS-411N 送料關係 (3/3) FEED MECHANISM COMPONENTS(3/3)

REF.No	NOTE	零件號碼 Part No.	零件名稱	Name of Part	件數 Q'TY	備註 Remarks
1		4110160900	連接又桿	Rod	1	
2		4710161000	送料連桿	Feed Connecting Link	1	
3		4710161100	送料調節桿	Feed Regulator	1	
4		4710161200	倒針槓桿	Lever	1	
5		4710161300	刻度板	Side Cover	1	
6		4710161600	調節桿握	Lever Grip	1	
7		4710161800	縫目調整桿	Lever Shaft	1	
8		4710161900	螺帽	Nut	1	
9		4710162000	壓縮彈簧	Spring	1	
10		4710162200	固定座	Support Plate	1	
11		4710162300	鋼球	Ball	1	
12		ZSK18018	螺絲	Hinge Screw	1	
13		2430161200	驅動軸	Con-Rod Pin	1	
14		ZSL18001	螺帽	Nut 9/32-28	1	
15		ZSB12015	螺絲	Screw 3/16-28*12	2	
16		ZSB12036	螺絲	Screw 3/16-32*18	1	
17		ZSB15019	螺絲	Screw 15/64-28*9	2	
18		ZML08001	螺帽	Nut M8 × 1.25	1	
19		ZMJ05003	螺絲	Screw M5 × 0.8*15	1	
20		ZSG16032	螺絲	Hinge Screw	1	
21		ZSL16003	螺帽	Nut 1/4-24	1	

E.CS-411N 下軸関係 (1/2) HOOK DRIVING SHAFT COMPONENTS (1/2)

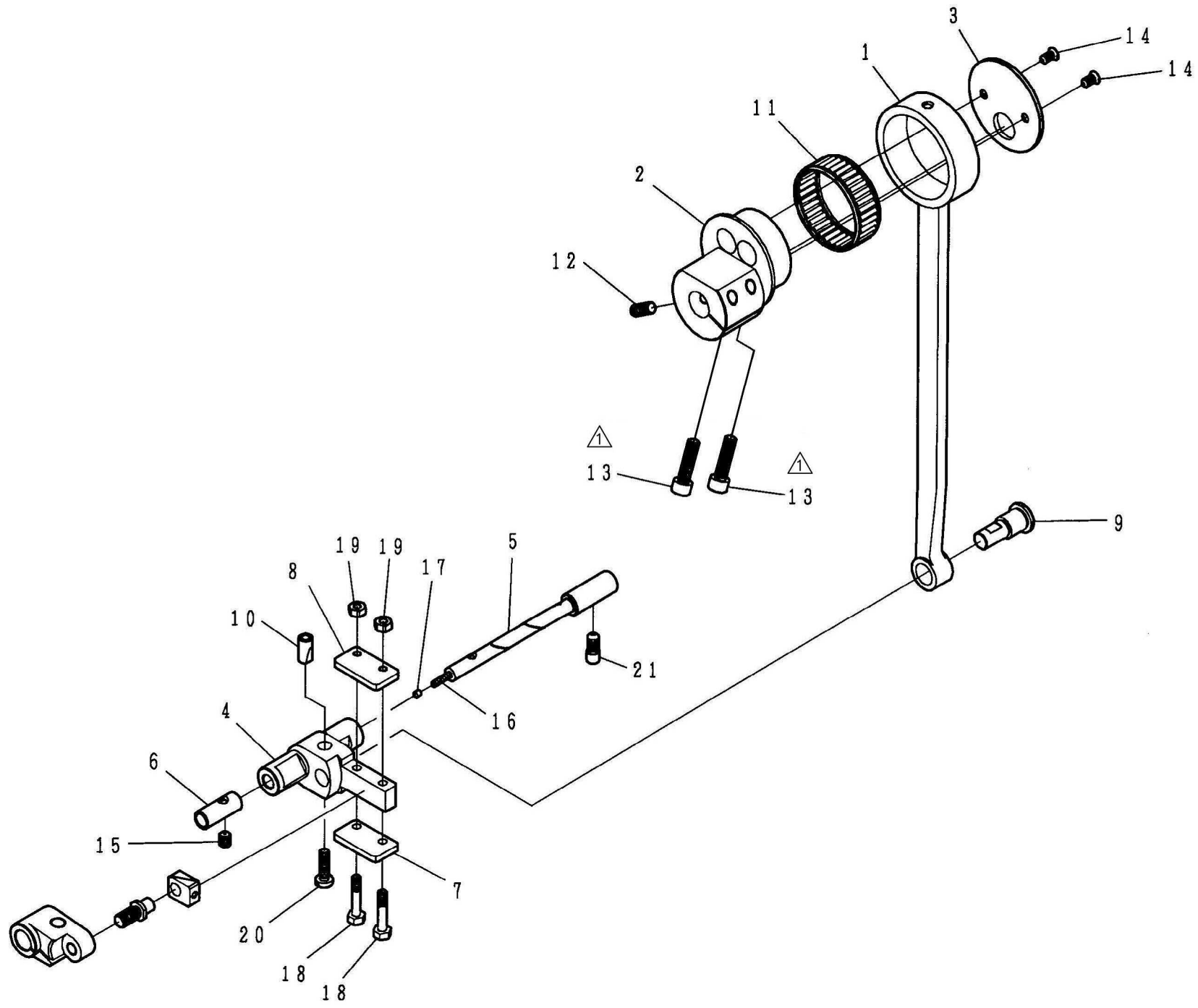


E. CS-411N 下軸關係 (1/2) HOOK DRIVING SHAFT COMPONENTS (1/2)

REF.No	NOTE	零件號碼 Part No.	零件名稱	Name of Part	件數 Q'TY	備註 Remarks
1		4710182500	連接柄	Hook Driving Shaft Crank	1	
2		4710182600	滑塊	Crank Slide Block	1	
3		4710182700	螺絲	Slide Block Stud	1	
4		4610180100	下軸	Hook Driving Shaft	1	
5		4710180301	下軸套管(左)	Bushing,Front	1	
6		4710180500	下軸套管(右)	Bushing,Rear	1	
7		4710181600	梭頭驅動柄	Shuttle Driver	1	
8		4710181400	梭頭導環座	Shuttle Race Body	1	
9		4710183200	梭仔	Bobbin	1	
10		4710183600	梭頭蓋	Hook Cover	1	
11		4710183700	梭頭蓋彈簧	Hook Cover Spring	2	
12		4710183800	壓縮彈簧	Hook Counter Spring	2	
13		4710183900	油棉	Oil Felt	2	
14		4710184000	螺絲	Screw	2	
15		ZSG06004	螺絲	Hinge Screw	2	
16		4710181300	梭頭	Hook	1	
17	#01	4710184210	固定輪	Distance Piece	1	
18	#01	4710184220	固定輪	Distance Piece	1	
19	#01	4710184230	固定輪	Distance Piece	1	
20		4710184200	固定輪 (標準)	Distance Piece (Standard)	1	
21	#01	4710184240	固定輪	Distance Piece	1	
22	#01	4710184250	固定輪	Distance Piece	1	
23	#01	4710184260	固定輪	Distance Piece	1	
24		ZSG12047	螺絲	Hinge Screw	2	
25		ZSA15010	螺絲	Screw 15/64-28*15	1	
26		ZSA15010	螺絲	Screw 15/64-28*15	1	
27		YB040018	推拔銷	Tapered Pin 4.0X18	1	
28		ZMJ08003	螺絲	Screw M8 x 1.25*22	1	
29		ZSL18003	螺帽	Nut 9/32-28	1	
30		LG4044-0A	定環	Thrust Collar	1	
31		ZSA16029	螺絲	Screw 1/4-40*3.5	2	

Note (注記) #01..... Selective part 選擇部品

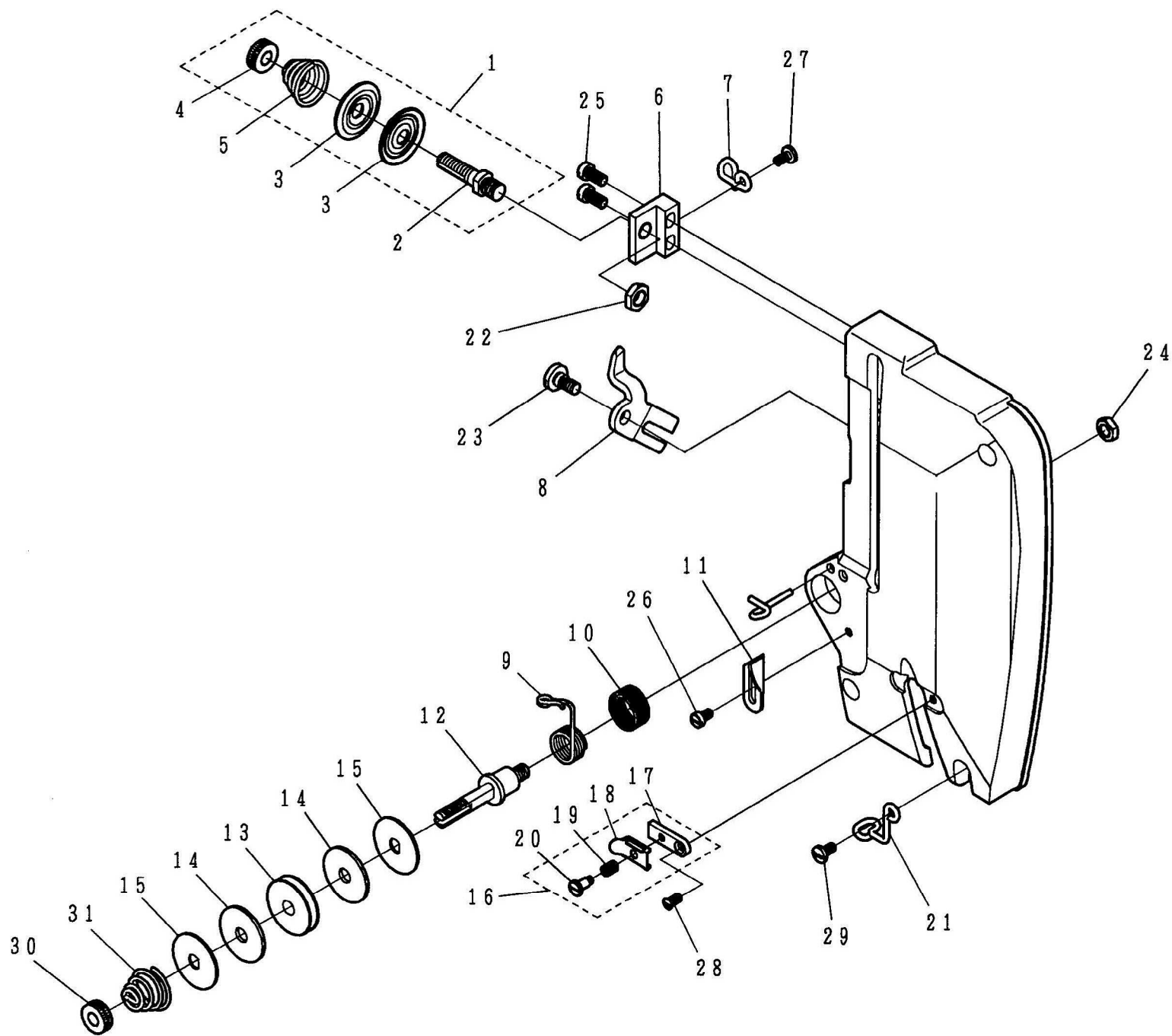
E.CS-411N 下軸関係 (2/2) HOOK DRIVING SHAFT COMPONENTS (2/2)



E. CS-411N 下軸關係 (2/2) HOOK DRIVING SHAFT COMPONENTS (2/2)

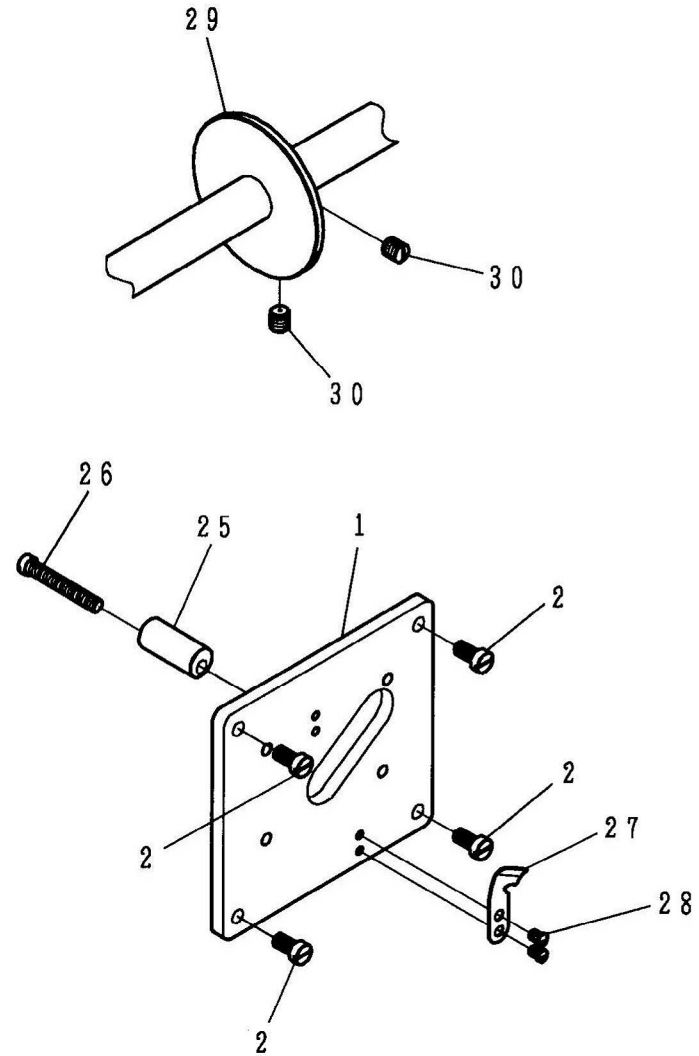
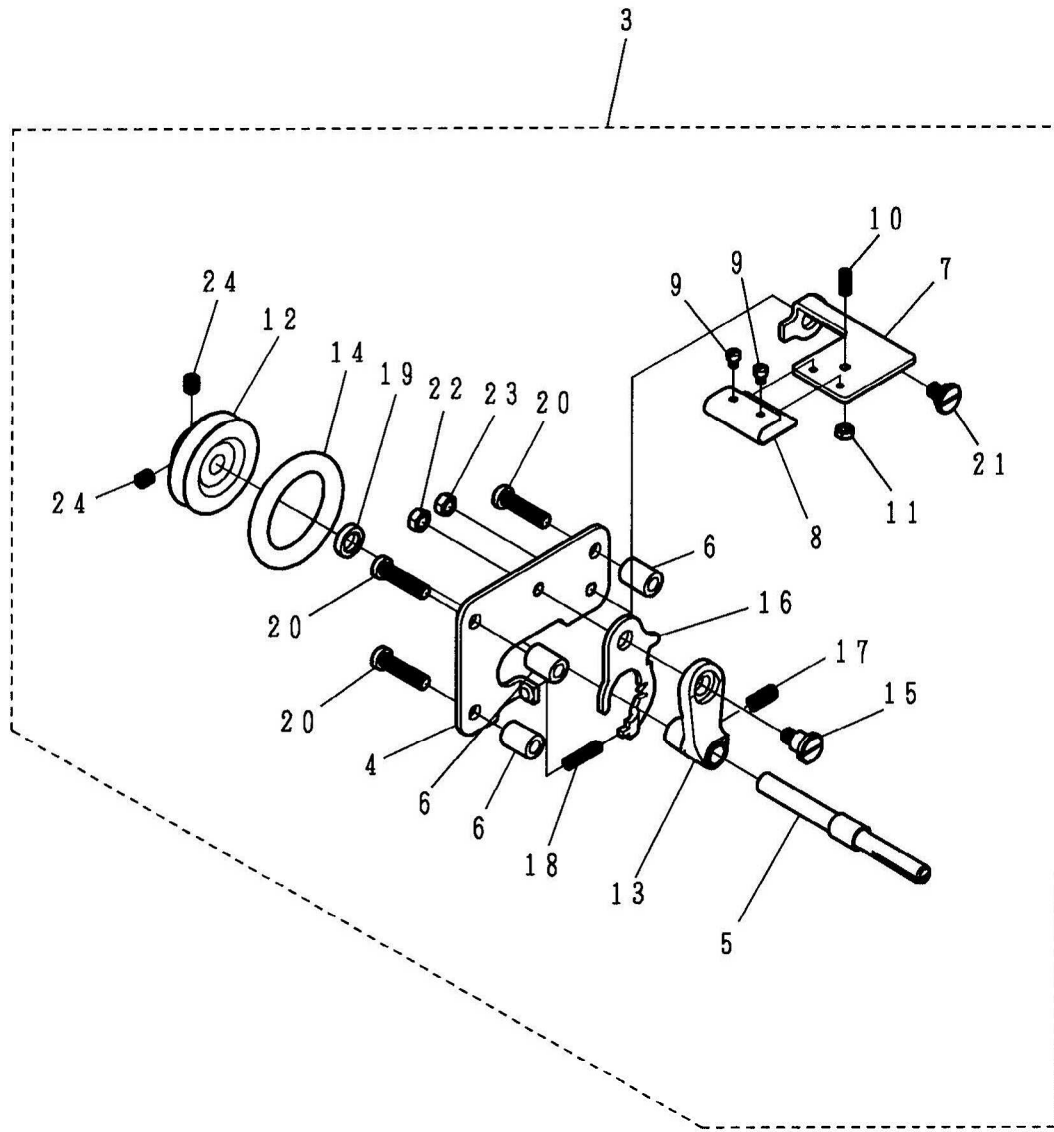
REF.No	NOTE	零件號碼 Part No.	零件名稱	Name of Part	件數 Q'TY	備註 Remarks
1		4710181800	動桿	Connecting Rod	1	
2		4710181900	偏心輪	Con-Rod Eccentric Cam	1	
3		4710182000	動桿止座	Cam Side Plate	1	
4		4710182200	搖動柄	Oscilating Rock Shaft	1	
5		4710182300	搖動柄軸	Hinge Pin	1	
6		4710182400	搖動柄軸套管	Rock Shaft Bushing	1	
7		4710182800	固定板 A	Slide Plate A	1	
8		4710182900	固定板 B	Slide Plate B	1	
9		4710183000	連結軸	Con-Rod Pin	1	
10		4710183100	銷	Con-Rod Pin Wedge	1	
11		4710182100	針狀軸承	Cage&Roller	1	
12		ZSH15006	螺絲	Screw 15/64-28*15	1	
△13		ZMJ08003	螺絲	Screw M6×1.0*23	2	
14		ZSC11002	螺絲	Screw 11/64-40*9	2	
15		ZSA15028	螺絲	Screw 15/64-28*7	1	
16		XA300085	油線	Oil Wick	1	
17		LG1275-0A	止栓	Plug	1	
18		ZSD11010	螺絲	Screw 11/64-40*24	2	
19		ZSL11002	螺帽	Nut 11/64-40	2	
20		ZSB12047	螺絲	Screw 3/16-32*18	1	
21		ZSJ15001	螺絲	Screw 15/64-28*10.7	1	
取消 △22		4710183400	銷	Pin	2	
取消 △23		WA060008	平墊圈	Washer	2	

F . CS - 4 1 1 N 糸調子関係 TENSION POST COMPONENTS



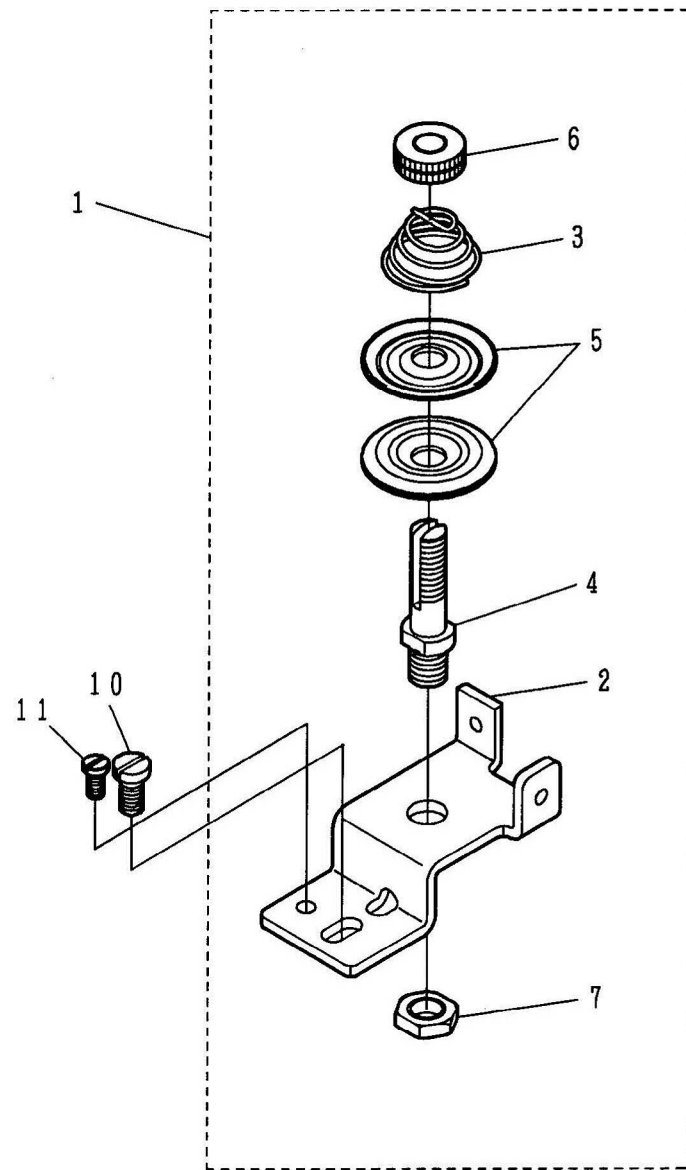
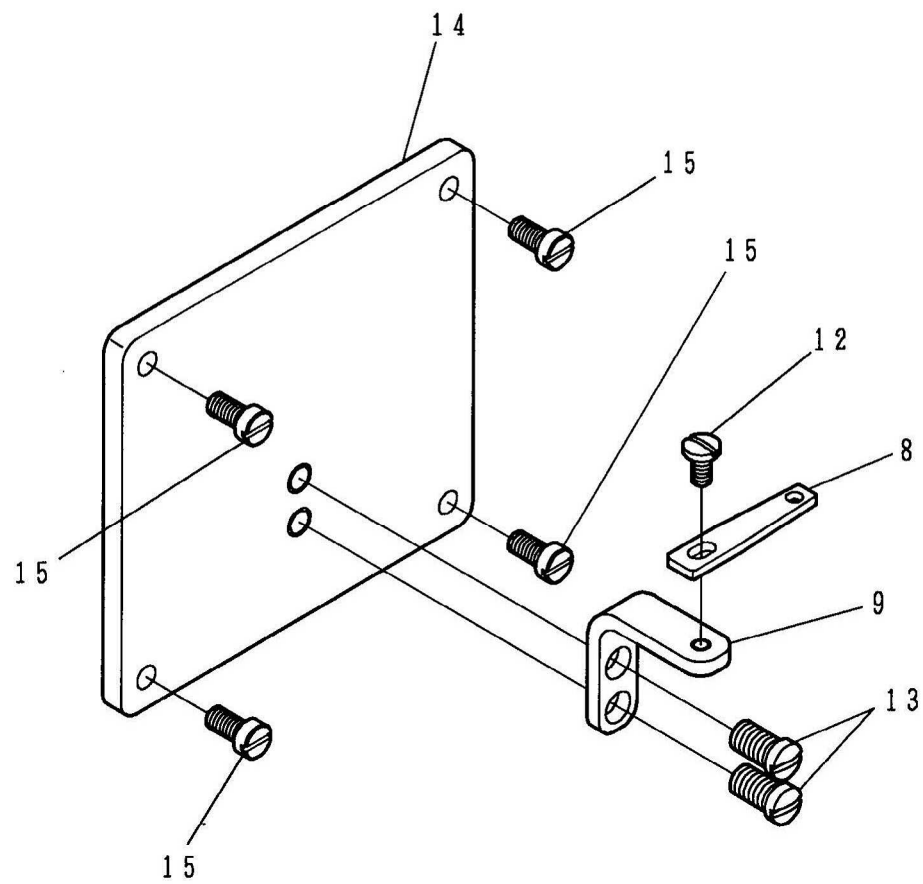
F. CS-411N 糸調子關係 TENSION POST COMPONENTS

REF.No	NOTE	零件號碼 Part No.	零件名稱 Name of Part	件數 Q'TY	備註 Remarks
1		4710310105	糸調子(組) Thread Tension Post Asm.	1	
2		4710310100	調整螺絲桿 Thread Tension Post	(1)	
3		A1025-0A	壓線盤 Tension Disk	(2)	
4		ZSN16004	螺帽 Thread Tension Stud Nut	(1)	
5		4710310400	調整彈簧 Thread Tension Spring	(1)	
6		4710310500	彈簧座 Thread Tension Post Bracket	1	
7		4710310600	線掛 Thread Tension Guide	1	
8		4710310700	鬆線銷 Thread Releasing Plate	1	
9		4710310800	吊線彈簧 Spring A	1	
10		4710310900	吊線彈簧 Spring B	1	
11		4710311000	線軸彈簧調整器 Spring Support Plate	1	
12		4710311100	調整螺絲桿 Thread Tension Wheel Post	1	
13		4710311200	調整線輪 Thread Tension Wheel	1	
14		XB123001	棉環 Wheel Felt	2	
15		4710311400	棉環側盤 Felt Support Plate	2	
16		4710311605	線掛(組) Arm Thread Guide Bottom Asm.	1	
17		4710311600	線掛 Thread Guide	(1)	
18		4710311700	壓線具 Guide Plate	(1)	
19		4710311800	彈簧 Spring	(1)	
20		ZSG08005	螺絲 Hinge Screw	(1)	
21		4710312000	線掛(下) Frame Thread Guide	1	
22		ZSL18003	螺帽 Nut 9/32-28	1	
23		ZSG12046	螺絲 Hinge Screw	1	
24		ZSL15002	螺帽 Nut 15/64-28	1	
25		ZSB11011	螺絲 Screw 11/64-40*9	2	
26		ZSB09014	螺絲 Screw 9/64-40*6	1	
27		ZSB09047	螺絲 Screw 9/64-40*7	1	
28		ZSC09005	螺絲 Screw 9/64-40*7.5	1	
29		ZSB09047	螺絲 Screw 9/64-40*7	1	
30		ZSN16004	螺帽 Thread Tension Stud Nut	1	
31		4710310400	調整彈簧 Thread Tension Spring	1	



G. CS-411N 捲線器·線掛關係 (1/2) THREAD WINDER & THREAD GUIDE COMPONENTS (1/2)

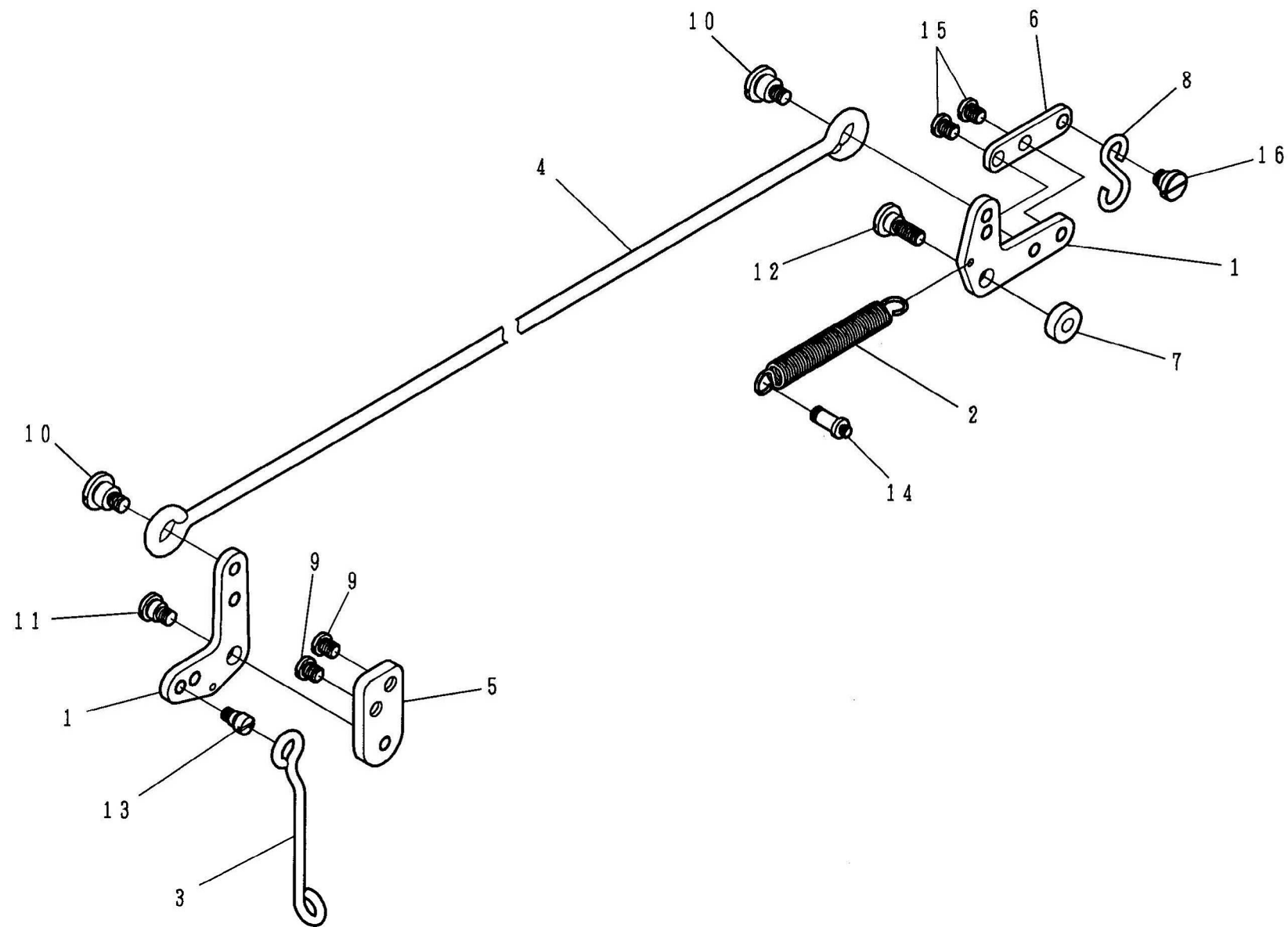
REF.No	NOTE	零件號碼 Part No.	零件名稱	Name of Part	件數 Q'TY	備註 Remarks
1		4710320100	窓板	Tension Winder Plate	1	
2		ZSB11011	螺絲	Screw 11/64-40*9	4	
3		4710320805	捲線器(組)	Thread Winder Asm.	1	
4		4710320800	下線捲線板	Thread Winder Base	(1)	
5		4710320900	梭仔軸	Thread Winder Shaft	(1)	
6		4710321000	定位保持銷	Spacer	(3)	
7		4710321100	壓力板	Bobbin Presser	(1)	
8		4710321200	彈簧板	Bobbin Presser Spring	(1)	
9		ZSB06008	螺絲	Screw 3/32-56*3.3	(2)	
10		ZSA08007	螺絲	Adjusting Screw	(1)	
11		ZSL08001	螺帽	Nut 1/8-44	(1)	
12		4710321300	驅動輪	Bobbin Winder Wheel	(1)	
13		4710321400	捲線柄	Bobbin Winder Frame	(1)	
14		4710322000	護謨輪	Wheel Ring	(1)	
15		ZSG11059	螺絲	Hinge Screw	(1)	
16		4710321500	捲線壓力板	Bobbin Winder Tension Bracket	(1)	
17		4710321600	壓縮彈簧	Spring	(1)	
18		4710321800	捲線壓縮彈簧	Bobbin Winder Spring	(1)	
19		4710321900	定環	Thread Winder Shaft Collar	(1)	
20		ZSB11083	螺絲	Screw 11/64-40*18	(3)	
21		ZSG11057	螺絲	Hinge Screw	(1)	
22		ZSL11007	螺帽	Nut 11/64-40	(1)	
23		ZSL11007	螺帽	Nut 11/64-40	(1)	
24		ZSA11003	螺絲	Screw 11/64-40*5	(2)	
25		4710320300	定位銷	Stopper	1	
26		ZSB11071	螺絲	Screw 11/64-40*30	1	
27		4710320400	切線保持板	Thread Cut & Clamp Plate	1	
28		ZSB08008	螺絲	Screw 1/8-44*4	2	
29		4710320500	摩擦輪	Friction Wheel	1	
30		ZSA15028	螺絲	Screw 15/64-28*7	2	



G. CS-411N 捲線器·線掛關係 (2/2) THREAD WINDER & THREAD GUIDE COMPONENTS (2/2)

REF.No	NOTE	零件號碼 Part No.	零件名稱	Name of Part	件數 Q'TY	備註 Remarks
1		4710313005	壓力調整器(組)	Thread Winder Guide Base Asm.	1	
2		4710313000	壓力調整器台	Thread Winder Guide Base	(1)	
3		4710313100	調整彈簧	Tension Spring	(1)	
4		4710310100	調整螺絲桿	Thread Tension Post	(1)	
5		A1025-0A	壓線盤	Tension Disk	(2)	
6		ZSN16004	螺帽	Thread Tension Stud Nut	(1)	
7		ZSL18003	螺帽	Nut 9/32-28	(1)	
8		4710322200	線掛	Thread Guide	1	
9		4710322300	線掛座	Guide Bracket	1	
10		ZSB11015	螺絲	Screw 11/64-40*8.5	1	
11		ZSB08001	螺絲	Screw 1/8-44*6	1	
12		ZSB09047	螺絲	Screw 9/64-40*7	1	
13		ZSB15004	螺絲	Screw 15/64-28*10.5	2	
14		4610113600	窓板	Thread Winder Plate	1	
15		ZSB11011	螺絲	Screw 11/64-40*9	4	

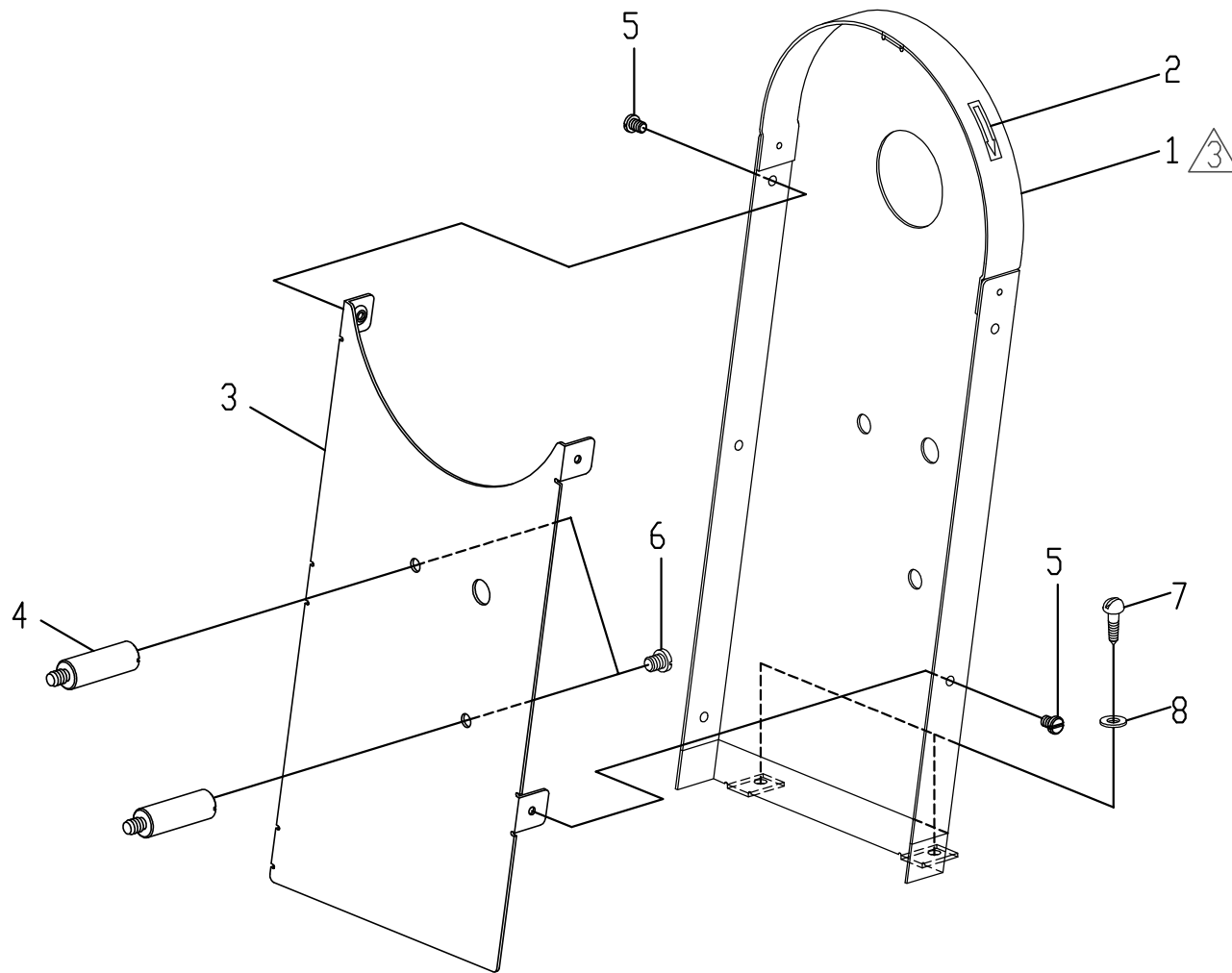
H.CS-411N 膝上関係 KNEE LIFTER COMPONENTS



H. CS-411N 膝上關係 KNEE LIFTER COMPONENTS

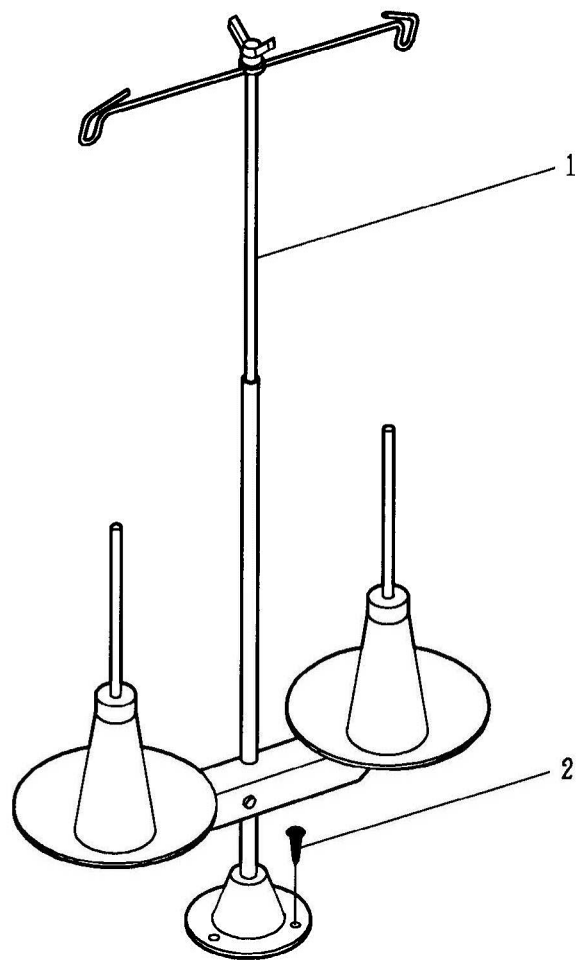
REF.No	NOTE	零件號碼 Part No.	零件名稱 Name of Part	件數 Q'TY	備註 Remarks
1		4710340100	押棒上升臂 ----- Presser Bar Lifting Link -----	2	
2		4710340200	拉伸彈簧 ----- Presser Bar Lifting Spring -----	1	
3		4710340300	押棒上升桿 ----- Presser Bar Lifting Bar -----	1	
4		4610340400	壓棒堤昇桿 ----- Side Connecting Bar -----	1	
5		4710340500	支持板 ----- Link Base -----	1	
6		4710340600	連結板 ----- Link Plate -----	1	
7		4710340700	定環 ----- Link Collar -----	1	
8		4710340800	S型銷 ----- S-Plug -----	1	
9		ZSB15001	螺絲 ----- Screw 15/64-28*6.5 -----	2	
10		ZSG15060	螺絲 ----- Hinge Screw -----	2	
11		ZSG15045	螺絲 ----- Hinge Screw -----	1	
12		ZSG15046	螺絲 ----- Hinge Screw -----	1	
13		4710341200	螺絲 ----- Hinge Screw -----	1	
14		ZSK11037	彈簧鉤螺絲 ----- Spring Suspension -----	1	
15		ZSB15001	螺絲 ----- Screw 15/64-28*6.5 -----	2	
16		ZSG16025	螺絲 ----- Hinge Screw -----	1	

I. CS-411N 皮帶套關係 BELT COVER COMPONENTS



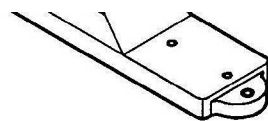
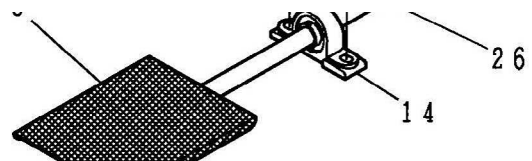
I. CS-411N 皮帶蓋關係 BELT COVER COMPONENTS

項次	零件號碼	零件名稱	Name of Part	件數	備註
No	Part No			Q'TY	Remarks
△ 1	4610335100	皮帶蓋 A -----	Belt Cover A -----	1	
2	4710335400	方向指示片 -----	Direction Lavel -----	1	
3	4710335200	皮帶蓋 B -----	Belt Cover B -----	1	
4	4710335300	皮帶蓋固定螺絲 -----	Belt Cover Stud -----	2	
5	ZSB11008	螺絲 -----	Screw (11/64-40x5) -----	5	
6	ZSB15001	螺絲 -----	Screw (15/64-28x6.5) -----	2	
7	ZMT05003	木螺絲 -----	Wood Screw -----	2	
8	WA059005	墊圈 -----	Washer -----	2	



J. CS-411N 線架關係 THREAD STAND COMPONENTS

REF.No	NOTE	零件號碼 Part No.	零件名稱	Name of Part	件數 Q'TY	備註 Remarks
1		A7050-0A	線架	Thread Stand	1	
2		ZMT05001	木螺絲	Wood Screw	3	



M. CS-411N 零件號碼與頁數對照表 (2/3) NUMERICAL PARTS-LIST (2/3)

零件號碼 Part No.	頁數 PAGE	零件號碼 Part No.	頁數 PAGE	零件號碼 Part No.	頁數 PAGE	零件號碼 Part No.	頁數 PAGE
4710311000	19- 11	4710340100	25- 1	LG4044-0A	15- 30	ZMH06008	9- 25
4710311100	19- 12	4710340200	25- 2	LG7220-0A	31- 15	ZMH08002	31- 32
4710311200	19- 13	4710340300	25- 3	LG7221-0A	31- 17	ZMJ05003	13- 19
4710311400	19- 15	4710340500	25- 5	LG7222-0A	31- 18	ZMJ06002	31- 25
4710311600	19- 17	4710340600	25- 6	LG7223-0A	31- 19	ZMJ06006	17- 13
4710311605	19- 16	4710340700	25- 7	LG7224-0A	31- 20	ZMJ08003	15- 28
4710311700	19- 18	4710340800	25- 8	RE000040	5- 30	ZML08001	13- 18
4710311800	19- 19	4710340800	33- 4	RE000080	9- 16	ZML16003	31- 29
4710312000	19- 21	4710341200	25- 13	RE000100	31- 21	ZMT05001	29- 2
4710313000	23- 2	4710341400	33- 3	TLA030	33- 22	ZMT05003	27- 7
4710313005	23- 1	4710910900	33- 1	TLA040	33- 21	ZSA08007	21- 10
4710313100	23- 3	4710911000	33- 9	TLA050	33- 20	ZSA09005	33- 15
4710320100	21- 1	4710911005	33- 7	TRB09 × 10	33- 24	ZSA11003	21- 24
4710320300	21- 25	4710911100	33- 8	TRB12 × 14	33- 23	ZSA15010	5- 15
4710320400	21- 27	4710911200	33- 10	WA049003	9- 29	ZSA15010	15- 25
4710320500	21- 29	4710911300	33- 11	WA059005	27- 8	ZSA15010	15- 26
4710320800	21- 4	4710911400	33- 14	WA060008	17- 23	ZSA15013	7- 9
4710320805	21- 3	4710911500	3- 10	WA079003	9- 31	ZSA15028	9- 19
4710320900	21- 5	6120160600	11- 8	WA100009	7- 33	ZSA15028	11- 14
4710321000	21- 6	A1013-0B	3- 16	WA100012	31- 22	ZSA15028	17- 15
4710321100	21- 7	A1025-0A	19- 3	WA149003	31- 27	ZSA15028	21- 30
4710321200	21- 8	A1025-0A	23- 5	WB130001	31- 26	ZSA15037	9- 17
4710321300	21- 12	A7000-0A	33- 17	WC049001	3- 7	ZSA15037	9- 20
4710321400	21- 13	A7010-0A	33- 19	WH203001	11- 18	ZSA16010	11- 17
4710321500	21- 16	A7010-2A	33- 18	WH212001	31- 23	ZSA16025	5- 23
4710321600	21- 17	A7012-1A	33- 2	WH216001	31- 28	ZSA16029	15- 31
4710321800	21- 18	A7050-0A	29- 1	XA200025	3- 17	ZSA16039	7- 10
4710321900	21- 19	BB6001ZZ	31- 16	XA200025	11- 21	ZSA16039	7- 28
4710322000	21- 14	BPUCP205	31- 14	XA200160	5- 14	ZSA16039	9- 32
4710322200	23- 8	E4044-0A	11- 9	XA300085	17- 16	ZSB06008	21- 9
4710322300	23- 9	IN794#230	7- 6	XB123001	19- 14	ZSB08001	23- 11
4710335100	27- 1	IN794#230	33- 25	YB040018	15- 27	ZSB08008	21- 28
4710335200	27- 3	LG1275-0A	17- 17	YB040045	5- 17	ZSB09007	11- 19
4710335300	27- 4	LG4014-0A	9- 22	YD030020	7- 34	ZSB09012	3- 14
4710335400	27- 2	LG4044-0A	9- 21	ZMD10003	31- 24	ZSB09014	19- 26

M. CS-411N 零件號碼與頁數對照表 (3/3) NUMERICAL PARTS-LIST (3/3)

零件號碼 Part No.	頁數 PAGE	零件號碼 Part No.	頁數 PAGE	零件號碼 Part No.	頁數 PAGE	零件號碼 Part No.	頁數 PAGE
ZSB09029	3- 13	ZSB18004	9- 30	ZSK18018	13- 12		
ZSB09047	3- 6	ZSC09005	19- 28	ZSK18028	11- 10		
ZSB09047	3- 9	ZSC11002	17- 14	ZSK18029	11- 11		
ZSB09047	19- 27	ZSC11007	5- 21	ZSK20007	9- 11		
ZSB09047	19- 29	ZSC18001	5- 19	ZSK20009	9- 12		
ZSB09047	23- 12	ZSC24001	31- 30	ZSL06001	33- 12		
ZSB09047	33- 13	ZSD11010	17- 18	ZSL08001	21- 11		
ZSB09061	7- 30	ZSD20003	5- 22	ZSL09001	7- 31		
ZSB11008	27- 5	ZSG06004	15- 15	ZSL11002	17- 19		
ZSB11011	11- 13	ZSG08005	19- 20	ZSL11007	21- 22		
ZSB11011	19- 25	ZSG11057	21- 21	ZSL11007	21- 23		
ZSB11011	21- 2	ZSG11059	21- 15	ZSL12003	33- 6		
ZSB11011	23- 15	ZSG12046	19- 23	ZSL15002	19- 24		
ZSB11015	23- 10	ZSG12047	15- 24	ZSL15004	33- 29		
ZSB11022	7- 12	ZSG15045	25- 11	ZSL16003	11- 20		
ZSB11035	9- 33	ZSG15046	25- 12	ZSL16003	13- 21		
ZSB11041	9- 15	ZSG15060	25- 10	ZSL16004	9- 14		
ZSB11071	21- 26	ZSG16024	9- 13	ZSL18001	5- 18		
ZSB11076	7- 13	ZSG16025	25- 16	ZSL18001	5- 31		
ZSB11083	21- 20	ZSG16031	11- 12	ZSL18001	13- 14		
ZSB12002	3- 15	ZSG16032	13- 20	ZSL18003	15- 29		
ZSB12015	13- 15	ZSG20012	5- 29	ZSL18003	19- 22		
ZSB12036	13- 16	ZSH15001	5- 20	ZSL18003	23- 7		
ZSB12047	17- 20	ZSH15006	17- 12	ZSL32003	31- 36		
ZSB15001	25- 9	ZSH16001	7- 29	ZSN16004	19- 4		
ZSB15001	25- 15	ZSH16004	5- 16	ZSN16004	19- 30		
ZSB15001	27- 6	ZSH16005	7- 27	ZSN16004	23- 6		
ZSB15004	23- 13	ZSJ11001	9- 28				
ZSB15005	33- 16	ZSJ15001	17- 21				
ZSB15019	13- 17	ZSJ16001	7- 32				
ZSB15021	3- 4	ZSJ32001	31- 31				
ZSB15032	7- 11	ZSJ32002	31- 33				
ZSB16005	9- 18	ZSJ32003	31- 34				
ZSB16005	11- 16	ZSJ32004	31- 35				
ZSB18001	11- 15	ZSK11037	25- 14				

CS-411N/461/491 自動”回針&抬押腳”電線配置圖

△ 2016.05.18

G4-PU46*2 → TS6-01*2
 G4-CTC601*4 → TS6-01*4
 KM-1*4 → ANKS-01*4

