

No.6120BTH07

金輪牌 GOLDEN WHEEL

1-Needle, Top & Bottom Feed Lockstitch Machine

CS-6120

1-Needle, Top & Bottom Feed Lockstitch Machine with Automatic Thread Trimmer

CS-6120-BT

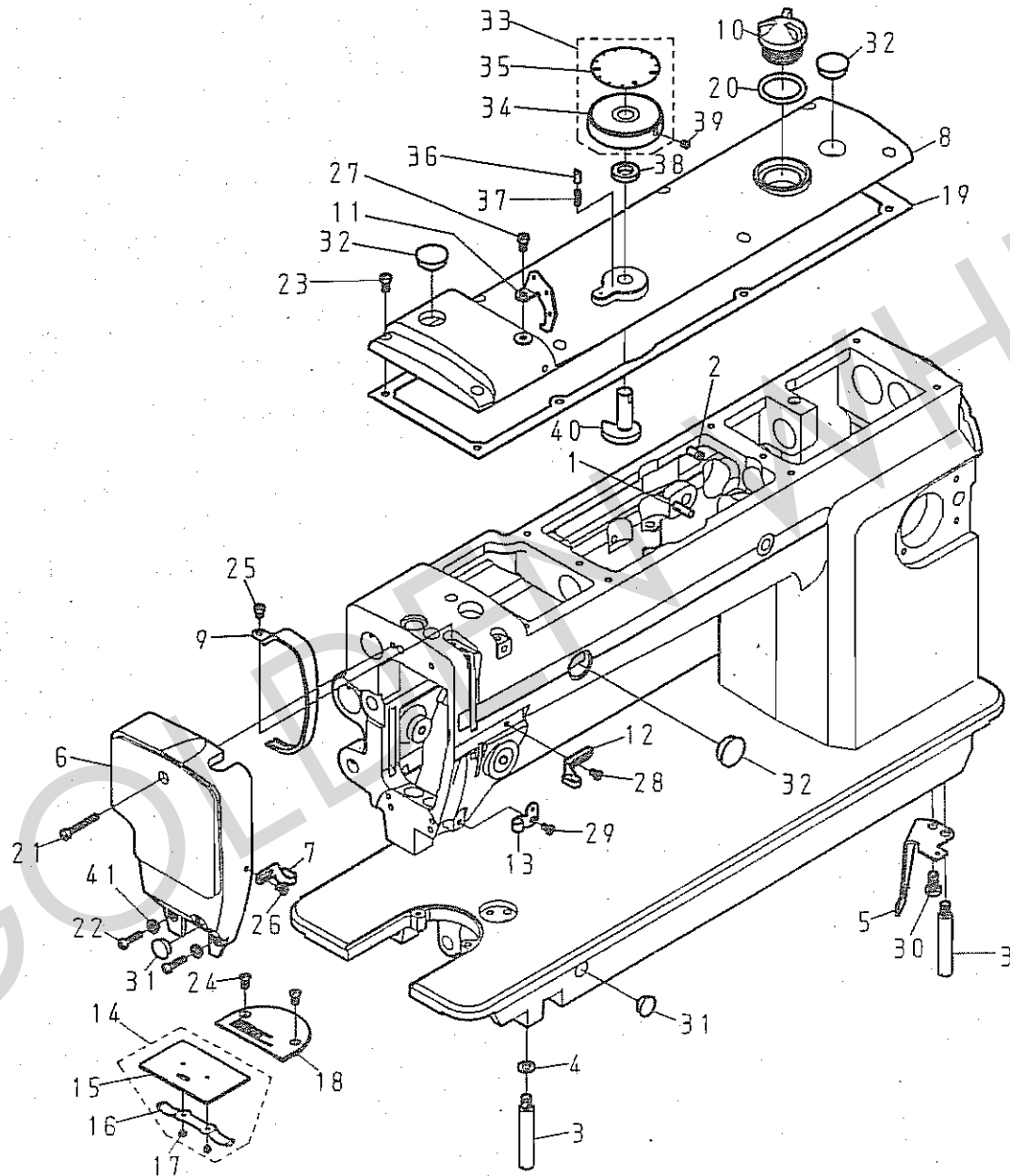
零件分解圖 PARTS LIST

CHEE SIANG INDUSTRIAL CO.,LTD.

MODEL : CS-6120, CS-6120-BT

目次	CONTENT	PAGE
A. 本體關係	FRAME & MISCELLANEOUS COVER COMPONENTS	2-5
B. 上軸·豎軸關係	MAIN SHAFT & UPRIGHT SHAFT COMPONENTS	6-7
C. 針棒·天秤關係	NEEDLE BAR & THREAD TAKE-UP LEVER COMPONENTS	8-9
D. 上部送料關係	UPPER FEED MECHANISM COMPONENTS	10-15
E. 押脚·脚弓關係	PRESSURE BAR & KNEE LIFTER COMPONENTS	16-17
F. 下部送料關係	LOWER FEED MECHANISM COMPONENTS	18-19
G. 縫目調節關係	FEED ADJUSTMENT MECHANISM COMPONENTS	20-23
H. 下軸關係	HOOK DRIVE SHAFT COMPONENTS	24-25
I. 切線關係	THREAD TRIMMER COMPONENTS	26-29
J. 縫線壓力調整關係	UPPER THREAD TENSION REGULATOR MECHANISM COMPONENTS	30-31
K. 油潤滑關係	OIL LUBRICATION MECHANISM COMPONENTS	32-33
L. 附件	ACCESSORIES	34-37
M. 零件號碼與頁數對照表	NUMERICAL PARTS-LIST	38-41

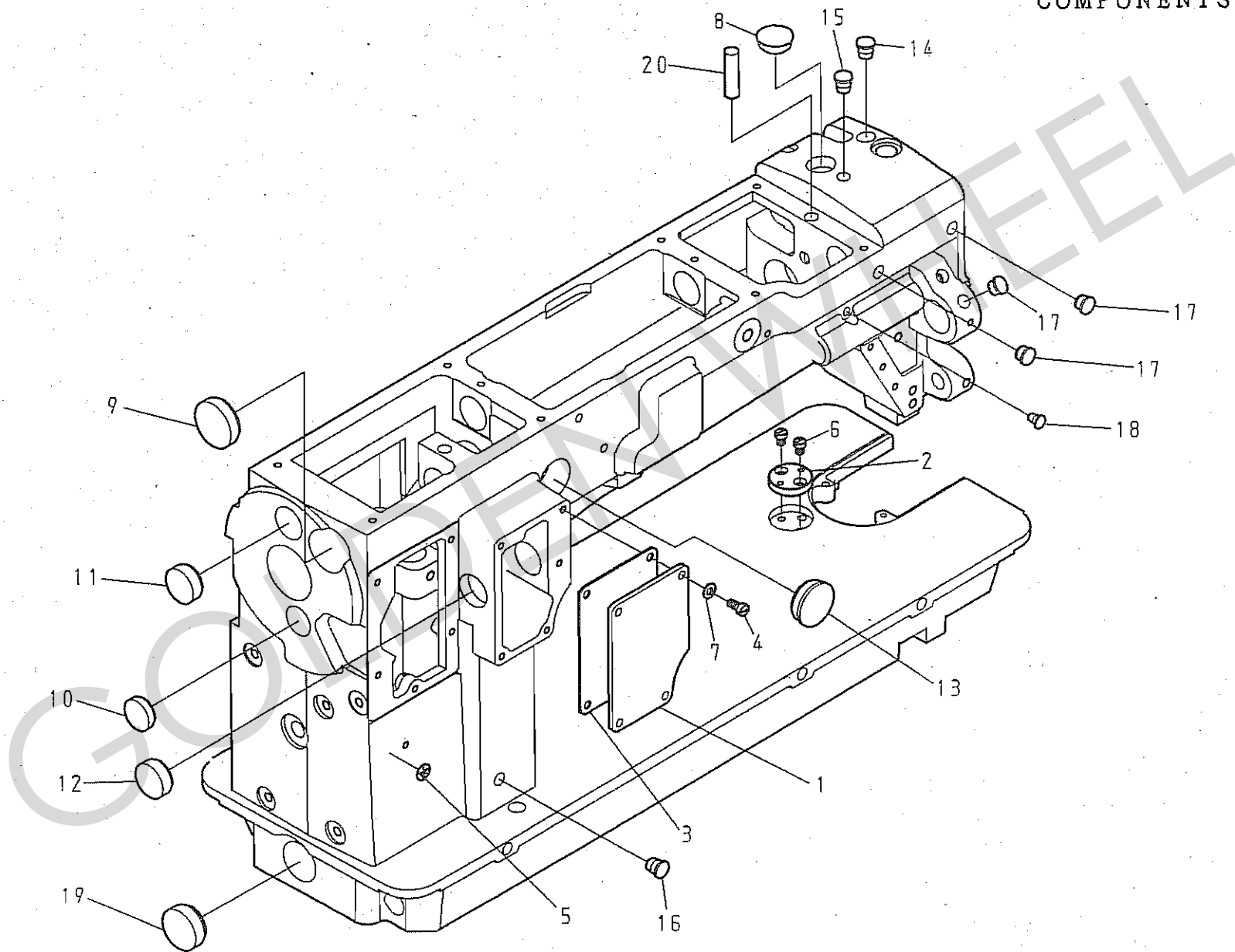
A. CS-6120, CS-6120-BT 本體關係 (1/2) FRAME & MISCELLANEOUS COVER COMPONENTS (1/2)



A. CS-6120、CS-6120-BT 本體關係 (1/2) FRAME & MISCELLANEOUS COVER COMPONENTS (1/2)

REF.NO	NOTE	零件號碼 Part No.	零件名稱 Name of Part	件數 Q'TY		備註 Remarks
				6120	6120-BT	
1		YA050300	銷	1	1	
2		EJ4434-2A	彈簧鈞	1	1	
3		6120110700	固定螺絲	3	3	
4		WA069007	平墊圈	2	2	
5		6120163600	彈簧鈞	1	1	
6		6120111000	面板	1	1	
7		E1053-0A	線掛	1	1	
8		6120110501	上蓋	1	1	
9		E1063-0A	天秤蓋	1	1	
10		EH1371-0A	油窓	1	1	
11		6120313400	線掛(上)	1	1	
12		E1052-0A	線掛(中)	1	1	
13		A1055-0A	線掛(下)	1	1	
14		6120111605	角板(套)	1	1	
15		6120111600	角板	(1)	(1)	
16		E4085-0A	簧片	(1)	(1)	
17		ZSB06004	螺絲	(2)	(2)	
18		E6050-0A	針板	1	1	
19		6120114200	油封	1	1	
20		OPP02550	O形環 25.5	1	1	
21		ZMB04002	螺絲	1	1	
22		ZMB04031	螺絲	2	2	
23		ZSB11010	螺絲	8	8	
24		ZSC11016	螺絲	2	2	
25		ZSB11021	螺絲	1	1	
26		ZSB09016	螺絲	1	1	
27		ZSB11012	螺絲	1	1	
28		ZSB09016	螺絲	1	1	
29		ZSB09016	螺絲	1	1	
30		ZSB15018	螺絲	1	1	
31		A1013-1A	油蓋	2	2	
32		A1013-0B	油蓋	3	3	
33		6120149106	刻度盤(組)	1	1	
34		6120149101	刻度盤	(1)	(1)	
35		612014910B	刻度板	(1)	(1)	
36		6120149201	定位銷	1	1	
37		6120149500	彈簧	1	1	
38		8110149201	墊圈	1	1	
39		ZMH04003	螺絲	1	1	
40		6120149001	偏心輪	1	1	
41		WA059002	墊圈	2	2	

A. CS-6120, CS-6120-BT 本體關係 (2/2) FRAME & MISCELLANEOUS COVER
COMPONENTS (2/2)

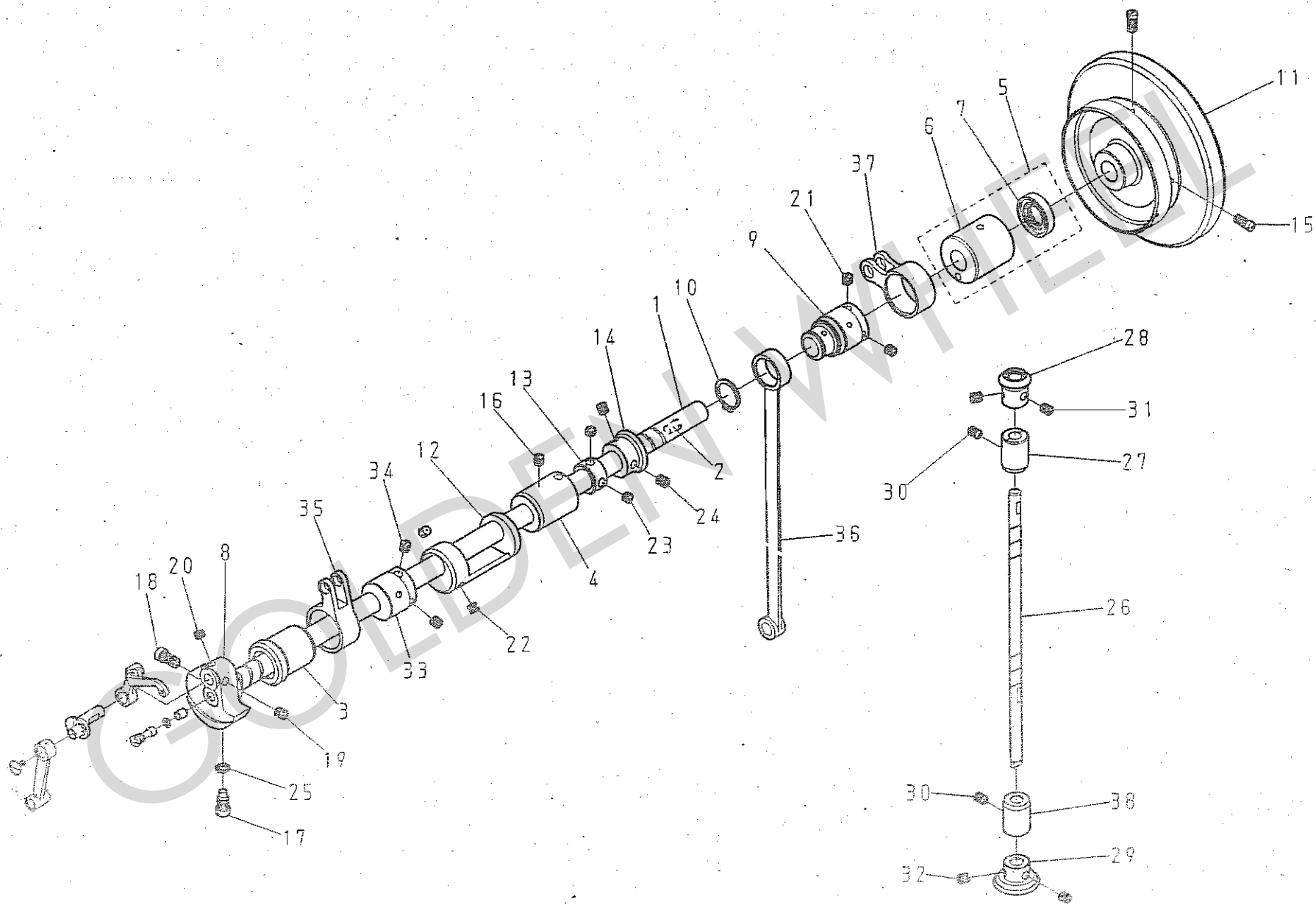


A. CS-6120, CS-6120-BT 本體關係 (2/2) FRAME & MISCELLANEOUS COVER COMPONENTS (2/2)

REF.No	NOTE	零件號碼	零件名稱	Name of Part	件數	Q'TY	備註
		Part No.			6120	6120-BT	Remarks
1		6120111100	橫蓋	Side Cover	1	1	
2		E4086-0A	導板座	Scale Base Plate	1	1	
3		6120114300	油封	Packing	1	1	
4		ZSB11011	螺絲	Screw 11/64-40 L=9	4	4	
5		WARN000500	印記	Grand Mark	1	1	
6		ZSB11021	螺絲	Screw 11/64-40 L=5.5	2	2	
7		WA049003	平墊圈	Washer $\phi 9 \times 0.8 \text{ d}=4.6$	4	4	
8		A1013-0A	油蓋	Rubber Plug	1	1	
9		6120117000	油蓋	Rubber Plug	1	1	
10		6120117100	油蓋	Rubber Plug	1	1	
11		6120117200	油蓋	Rubber Plug	1	1	
12		6120117200	油蓋	Rubber Plug	1	1	
13		6120117300	油蓋	Rubber Plug	1	1	
14		6120117400	油蓋	Rubber Plug	1	1	
15		6120117400	油蓋	Rubber Plug	1	1	
16		6120117400	油蓋	Rubber Plug	1	1	
17		6120117700	油蓋	Rubber Plug	3	3	
18		6120117800	油蓋	Rubber Plug	1	1	
19		6120117500	油蓋	Rubber Plug	1	1	
20		XB108005	油綿	Felt	1	1	

GOLDEN WHEEL

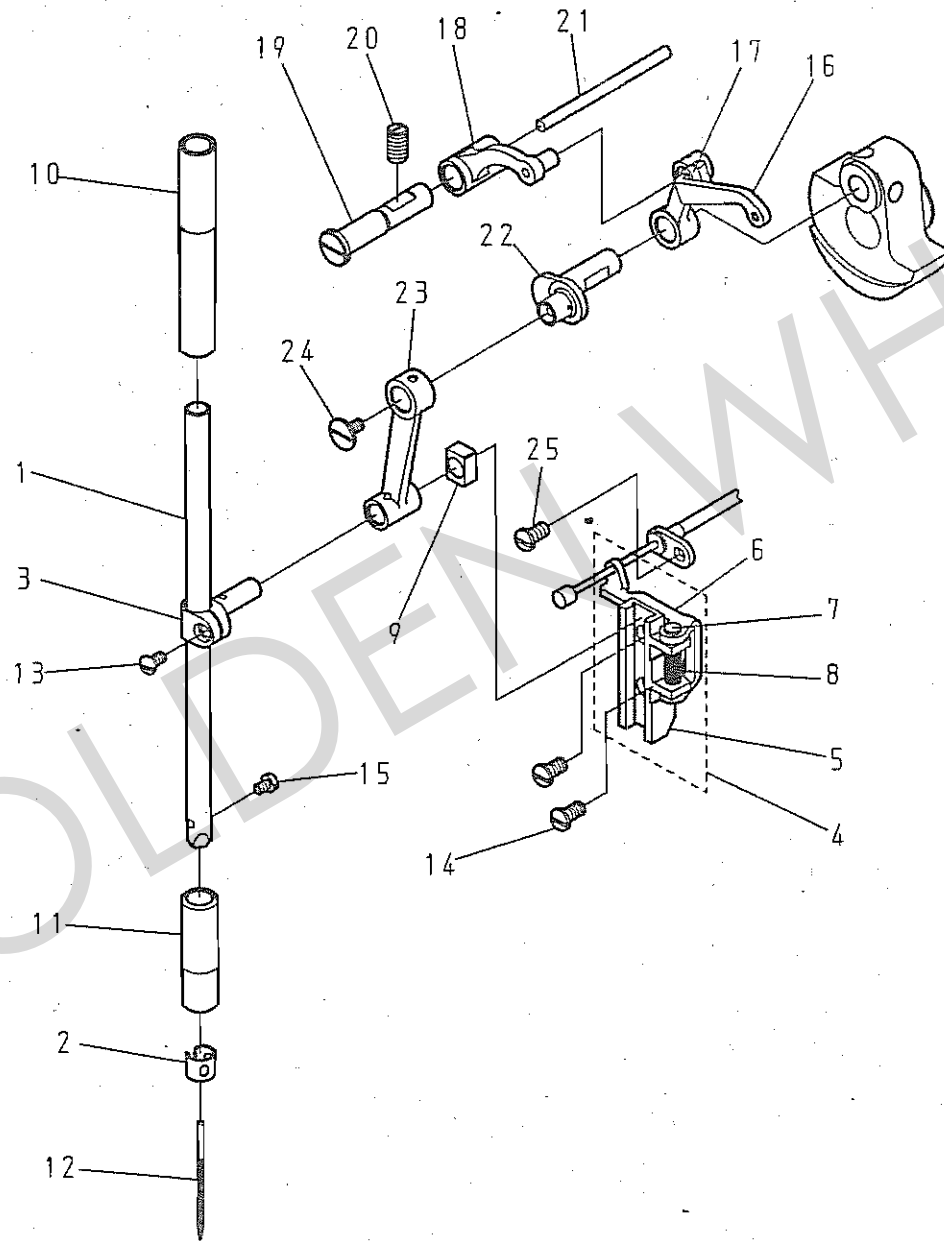
B. CS-6120, CS-6120-BT 上軸・堅軸関係 MAIN SHAFT & UPRIGHT SHAFT COMPONENTS



B. CS-6120, CS-6120-BT 上軸·豎軸關係 MAIN SHAFT & UPRIGHT SHAFT COMPONENTS

REF.No	NOTE	零件號碼	零件名稱	Name of Part	件數	Q'TY	備註
		Part No.			6120	6120-BT	Remarks
1		6120120100	上軸	Main Shaft	1	1	
2		6120120600	橡膠蓋	Cap	1	1	
3		6120120200	上軸套管(前)	Main Shaft Bushing, Front	1	1	
4		6120120300	上軸套管(中)	Main Shaft Bushing, Center	1	1	
5		6120120405	上軸套管(後)組	Main Shaft Bushing, Rear Asm.	1	1	
6		6120120400	上軸套管(後)	Main Shaft Bushing, Rear	(1)	(1)	
7		CASCAC0566E	油蓋	Oil Seal	(1)	(1)	
8		6120120800	凸輪	Counterweight	1	1	
9		6120122000	偏心輪	Feed Cam	1	1	
10		RB200200	軸用C扣環 20	Retaining Rings-C Type 20	1	1	
11		6120122300	皮帶輪	Hand Wheel	1	1	
12		6120120900	平衡錘	Balance Weight	1	1	
13		E4044-0A	定環	Thrust Collar	1	1	
14		A1108-0A	上傘齒車(大)	Bevel Gear, Large	1	1	
15		ZSB15026	螺絲	Screw 15/64-28 L=18	2	2	
16		ZSA15028	螺絲	Screw 15/64-28 L=7	1	1	
17		ZSB18009	螺絲	Screw 9/32-28 L9.8	1	1	
18		ZSB18004	螺絲	Screw 9/32-28 L=12	1	1	
19		ZSA16011	螺絲	Screw 1/4-40 L=7	1	1	
20		ZSA16010	螺絲	Screw 1/4-40 L=4.5	1	1	
21		ZSA16025	螺絲	Screw 1/4-40 L=6	2	2	
22		ZSA16025	螺絲	Screw 1/4-40 L=6	2	2	
23		ZSA16010	螺絲	Screw 1/4-40 L=4.5	2	2	
24		ZSA16011	螺絲	Screw 1/4-40 L=7	2	2	
25		OPP00500	O形環 6	O-rings ϕ 6	1	1	
26		6120132000	豎軸	Upright Shaft	1	1	
27		6120132100	豎軸套管	Upright Shaft Bushing	1	1	
28		A1109-0A	豎傘齒車(小)	Bevel Gear, Small	1	1	
29		A4020-0A	豎傘齒車(大)	Bevel Gear, Large	1	1	
30		ZSA15017	螺絲	Screw 15/64-28 L=8.5	2	2	
31		ZSA16011	螺絲	Screw 1/4-40 L=7	2	2	
32		ZSA16011	螺絲	Screw 1/4-40 L=7	2	2	
33		6120144400	偏心輪	Driving Cam	1	1	
34		ZSA16025	螺絲	Screw 1/4-40 L=6	2	2	
35		6120144500	連桿	Connecting Rod	1	1	
36		6120170100	送料桿	Feed Rod	1	1	
37		6120167400	倒縫軸連結腕	Reverse Sewing Crank	1	1	
38		A1113-0A	豎軸套管	Upright Shaft Bushing	1	1	

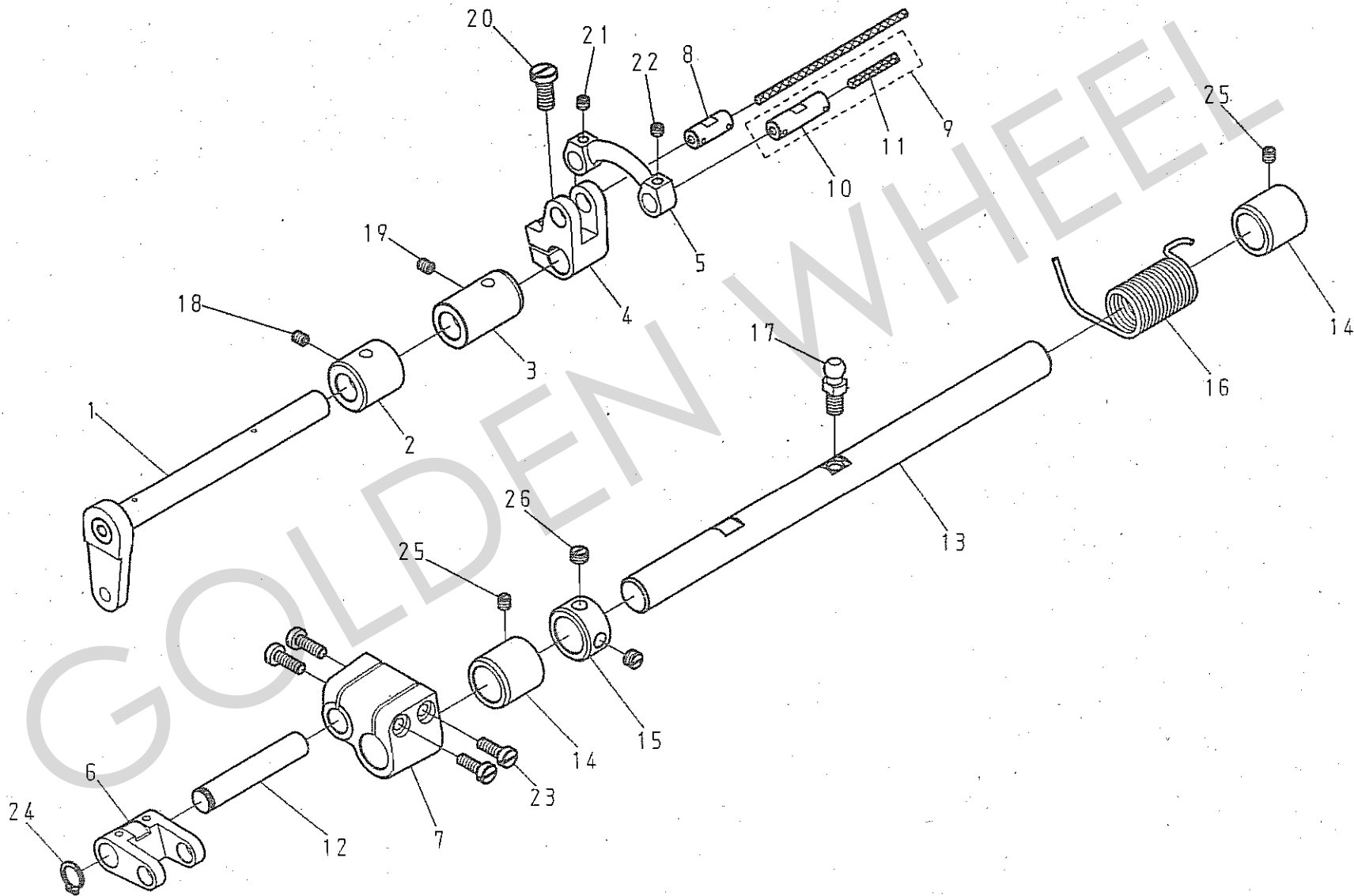
C. CS-6120, CS-6120-BT 針棒・天秤關係 NEEDLE BAR & THREAD TAKE-UP LEVER
COMPONENTS



C. CS-6120、CS-6120-BT 針棒·天秤關係 NEEDLE BAR & THREAD TAKE-UP LEVER COMPONENTS

REF.No	NOTE	零件號碼	零件名稱	Name of Part	件數 Q'TY		備註
		Part No.			6120	6120-BT	Remarks
1		6120140100	針棒	Needle Bar	1	1	
2		6120140700	針棒線掛	Needle Bar Thread Guide	1	1	
3		E1074-0A	針棒鉗	Needle Bar Connection	1	1	
4		E1089-2A	針棒連接器導槽(組)	Needle bar Connecting Link Guide Asm.	0	1	
5		E1081-2A	針棒連接器導槽	Needle bar Connecting Link Guide	1	(1)	
6		E1088-2A	鬆線導板	Thread Releasing Plate	0	(1)	
7		E1087-2A	緩線鎖	Tension Releasing Pin	0	(1)	
8		E1085-2A	彈簧	Spring	0	(1)	
9		A1082-0A	針棒導引滑塊	Slide Block	1	1	
10		A1071-0A	針棒套管(上)	Needle Bar Bushing, Upper	1	1	
11		6120140500	針棒套管(下)	Needle Bar Bushing, Lower	1	1	
12		INDP × 17-22	針	Needle DP × 17-22	1	1	
13		ZSB09019	螺絲	Screw 9/64-40 L=6	1	1	
14		ZSB11024	螺絲	Screw 11/64-40 L=8	2	2	
15		ZSB08010	螺絲	Screw 1/8-44 L=4.6	1	1	
16		E1065-1A	天秤	Thread Take-up Lever	1	1	
17		6120190500	油防橡膠	Oil Guard Rubber	1	1	
18		E1064-0A	天秤架	Thread Take-up Lever Link	1	1	
19		6120192100	天秤固定銷	Thread Take-up Lever Link Pin	1	1	
20		ZSA15020	螺絲	Screw 15/64-28 L=11	1	1	
21		XB104002	油綿	Felt	1	1	
22		6120121304	針棒連接軸(組合)	Needle Bar Crank Shaft	1	1	
23		E1067-0A	針棒連接桿	Needle Bar Crank Rod	1	1	
24		ZSK09001	螺絲	Screw 9/64-40	1	1	
25		ZSB11024	螺絲	Screw 11/64-40 L=8	0	1	

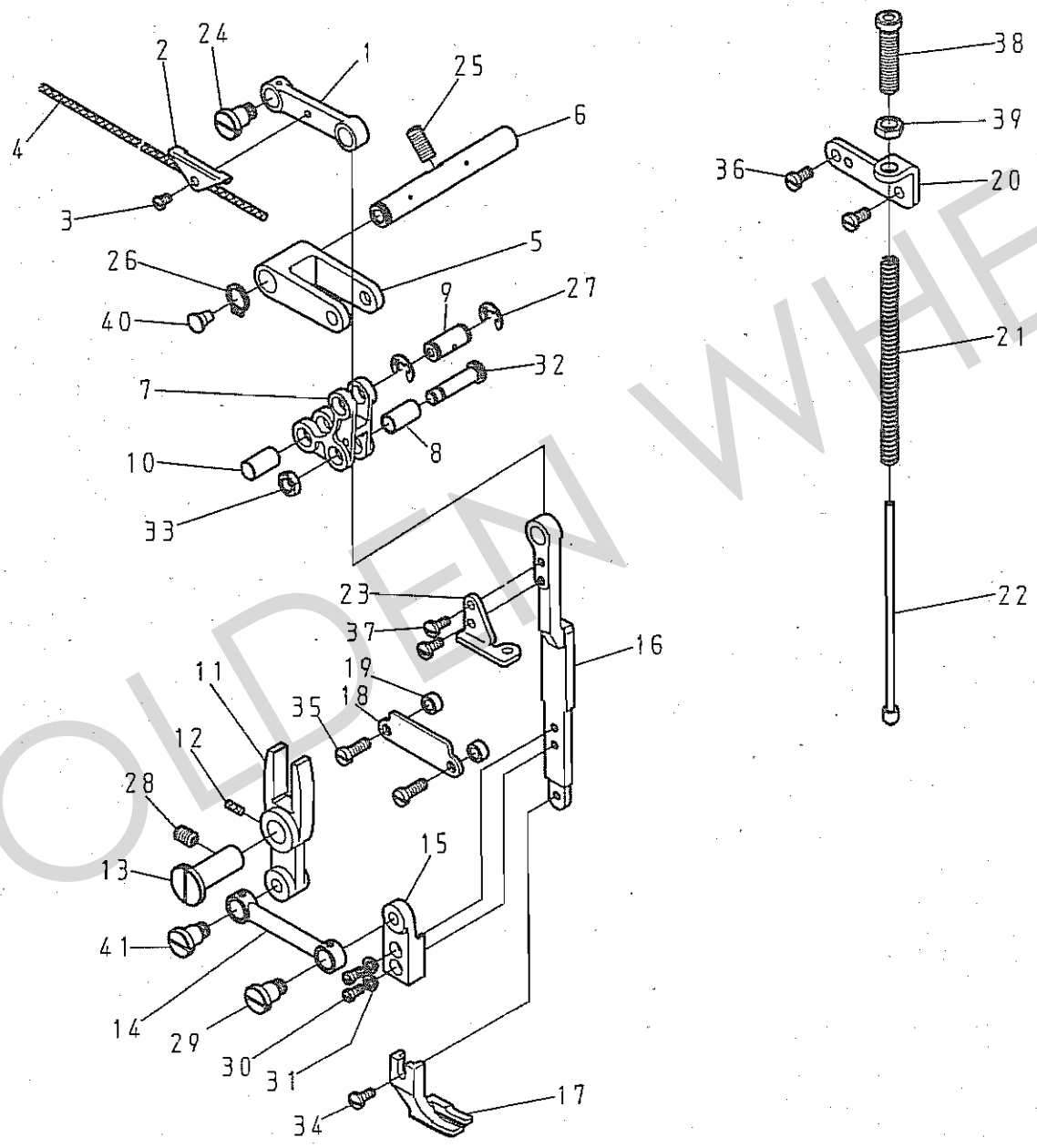
D. CS-6120, CS-6120-BT 上部送率圖係 (1/3) UPPER FEED MECHANISM COMPONENTS (1/3)



D. CS-6120, CS-6120-BT 上部送料關係 (1/3) UPPER FEED MECHANISM COMPONENTS (1/3)

REF.No	NOTE	零件號碼 Part No.	零件名稱 Name of Part	件數 Q'TY		備註 Remarks
				6120	6120-BT	
1		6120144804	上送軸(結合) --- Feed Rocker Shaft Com. ---	1	1	
2		6120144900	上送軸套管(左) --- Bushing, Front ---	1	1	
3		6120145000	上送軸套管(右) --- Bushing, Rear ---	1	1	
4		6120144700	上送軸柄 --- Driving Shaft Arm, Front ---	1	1	
5		6120143300	連桿 A --- Upper Feed Link A ---	1	1	
6		6120143400	連桿 B --- Upper Feed Link B ---	1	1	
7		6120147000	連桿 --- Driving Shaft Rod, Front ---	1	1	
8		6120147100	連接桿軸A --- Shaft A ---	1	1	
9		6120147205	連接桿軸(組) --- Shaft B Asm. ---	1	1	
10		6120147200	連接桿軸B --- Shaft B ---	(1)	(1)	
11		XA200055	油線 --- Oil Wick ---	(1)	(1)	
12		6120147300	連接桿軸C --- Shaft C ---	1	1	
13		6120147400	軸 --- Shaft ---	1	1	
14		6120160600	套管 --- Bushing ---	2	2	
15		E4044-0A	定環 --- Thrust Collar ---	1	1	
16		6120147500	彈簧 --- Spring ---	1	1	
17		6120147600	銷 --- Pin ---	1	1	
18		ZSA11005	螺絲 --- Screw 11/64-40 L=5.5 ---	1	1	
19		ZSA11005	螺絲 --- Screw 11/64-40 L=5.5 ---	1	1	
20		ZSB15032	螺絲 --- Screw 15/64-28 L=14 ---	1	1	
21		ZSA11017	螺絲 --- Screw 11/64-40 L=4 ---	1	1	
22		ZSA11017	螺絲 --- Screw 11/64-40 L=4 ---	1	1	
23		ZSB12012	螺絲 --- Screw 3/16-28 L=15 ---	4	4	
24		RB200100	軸用C扣環 10 --- Retaining Rings-C Type 10 ---	1	1	
25		ZSA11005	螺絲 --- Screw 11/64-40 L=5.5 ---	1	1	
26		ZSA16010	螺絲 --- Screw 1/4-40 L=4.5 ---	2	2	

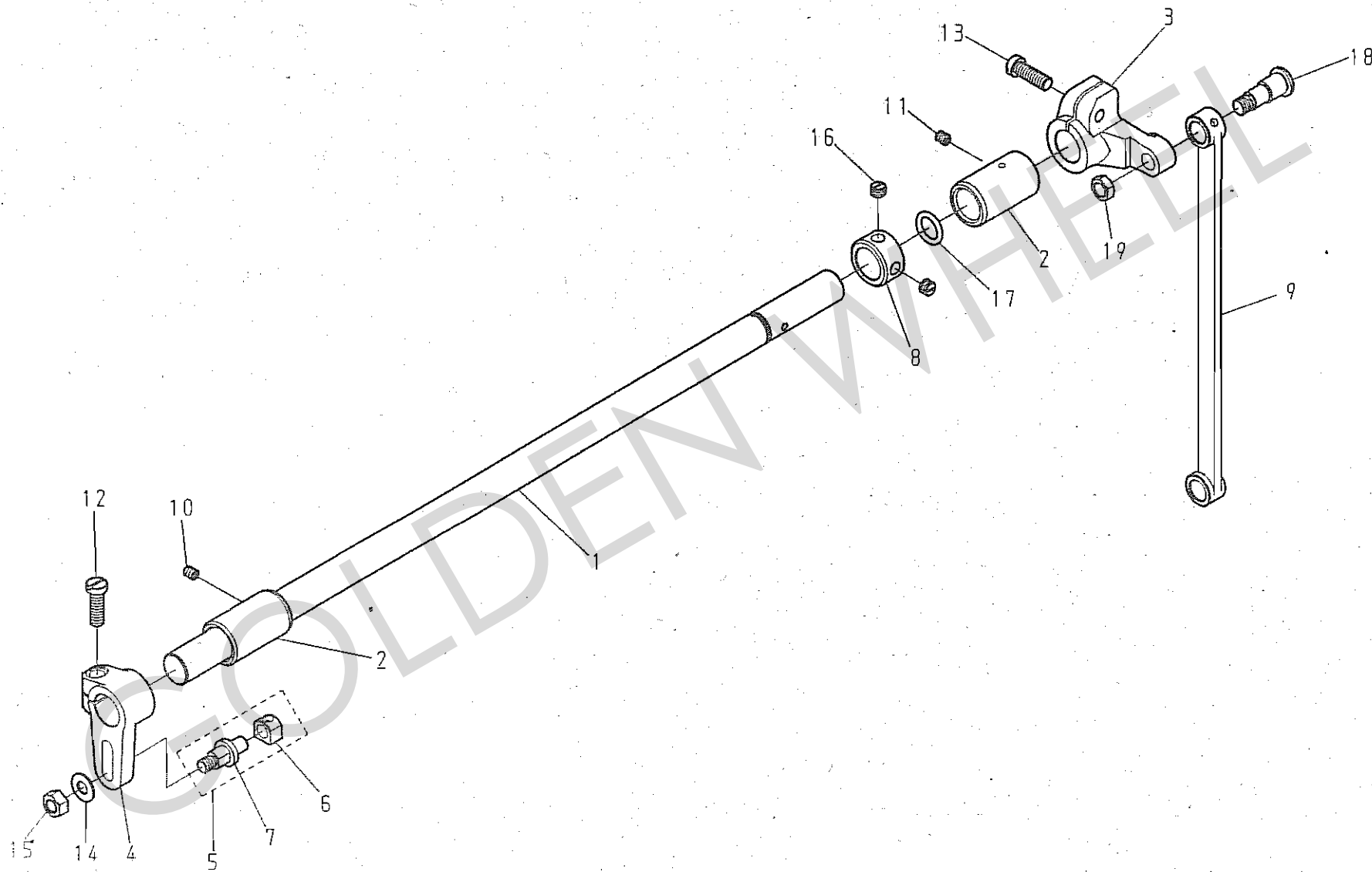
D. CS-6120, CS-6120-BT 上料送料机构 (2/3) UPPER FEED MECHANISM COMPONENTS (2/3)



D. CS-6120、CS-6120-BT 上部送料關係 (2/3) UPPER FEED MECHANISM COMPONENTS (2/3)

NOTE	零件號碼	零件名稱	Name of Part	件數	Q'TY	備註
	Part No.			6120	6120-BT	Remarks
1	6120145100	搖軸連桿	Rod	1	1	
2	6120353100	油線掛架	Holder	1	1	
3	ZSB09005	螺絲	Screw 9/64-40 L=5	1	1	
4	XA200400	油線	Oil Wick	1	1	
5	6120147700	連桿	Bell Crank Link	1	1	
6	6120147800	舉升支臂軸	Bell Crank Shaft	1	1	
7	6120143600	舉升支臂連桿	Bell Crank	1	1	
8	6120147900	套管	Bushing	1	1	
9	6120148000	銷 A	Pin A	1	1	
10	6120148100	銷 B	Pin B	1	1	
11	6120148200	押脚水平擺臂	Slide fork	1	1	
12	XA300004	油線	Oil Wick	1	1	
13	6120148300	掛銷	Slide fork Pin	1	1	
14	6120143100	押脚連接桿	Rod	1	1	
15	6100148400	送料臂	Feed Arm	1	1	
16	6100143200	押脚引導桿	Walking Foot Guide Link	1	1	
17	E1235-0A	外押脚	Walking Foot (Standard)	1	1	
18	6120148600	押脚導板	Supporting Plate	1	1	
19	6120148500	墊圈	Washer	2	2	
20	6120144000	壓棒調節座	Presser Regulating Bracket	1	1	
21	6120144200	彈簧	Spring	1	1	
22	6120144105	彈簧導桿(組)	Spring Guide Bar Asm.	1	1	
23	6120144300	彈簧支板	Prop Up Plate	1	1	
24	ZSG16002	螺絲	Hinge Screw 1/4-40 D=8 L=7	1	1	
25	ZSA15024	螺絲	Screw 15/64-28 L=14	1	1	
26	RB200100	軸用C扣環 10	Retaining Rings-C Type 10	1	1	
27	RE000060	E扣環 6	Retaining Rings- E Type 6	2	2	
28	ZSA15017	螺絲	Screw 15/64-28 L=8.5	1	1	
29	ZSG16002	螺絲	Hinge Screw 1/4-40 D=8 L=7	1	1	
30	ZSB09022	螺絲	Screw 9/64-40 L=8	2	2	
31	WB031001	彈簧墊圈	Spring Lock Washers ϕ 3.6	2	2	
32	ZSG15056	螺絲	Screw 15/64-28 L=25	1	1	
33	ZSL15002	螺帽	Nut 15/64-28	1	1	
34	ZSB09017	螺絲	Screw 9/64-40 L=8	1	1	
35	ZSB11017	螺絲	Screw 11/64-40 L=12	2	2	
36	ZSB11015	螺絲	Screw 11/64-40 L=8.5	2	2	
37	ZSB09017	螺絲	Screw 9/64-40 L=8	2	2	
38	ZSF18001	螺絲	Screw 9/32-28 L=31	1	1	
39	ZSL18002	螺帽	Nut 9/32-28	1	1	
40	6120117600	油蓋	Rubber Plug	1	1	
41	ZSG16035	螺絲	Hinge Screw 1/4-40	1	1	

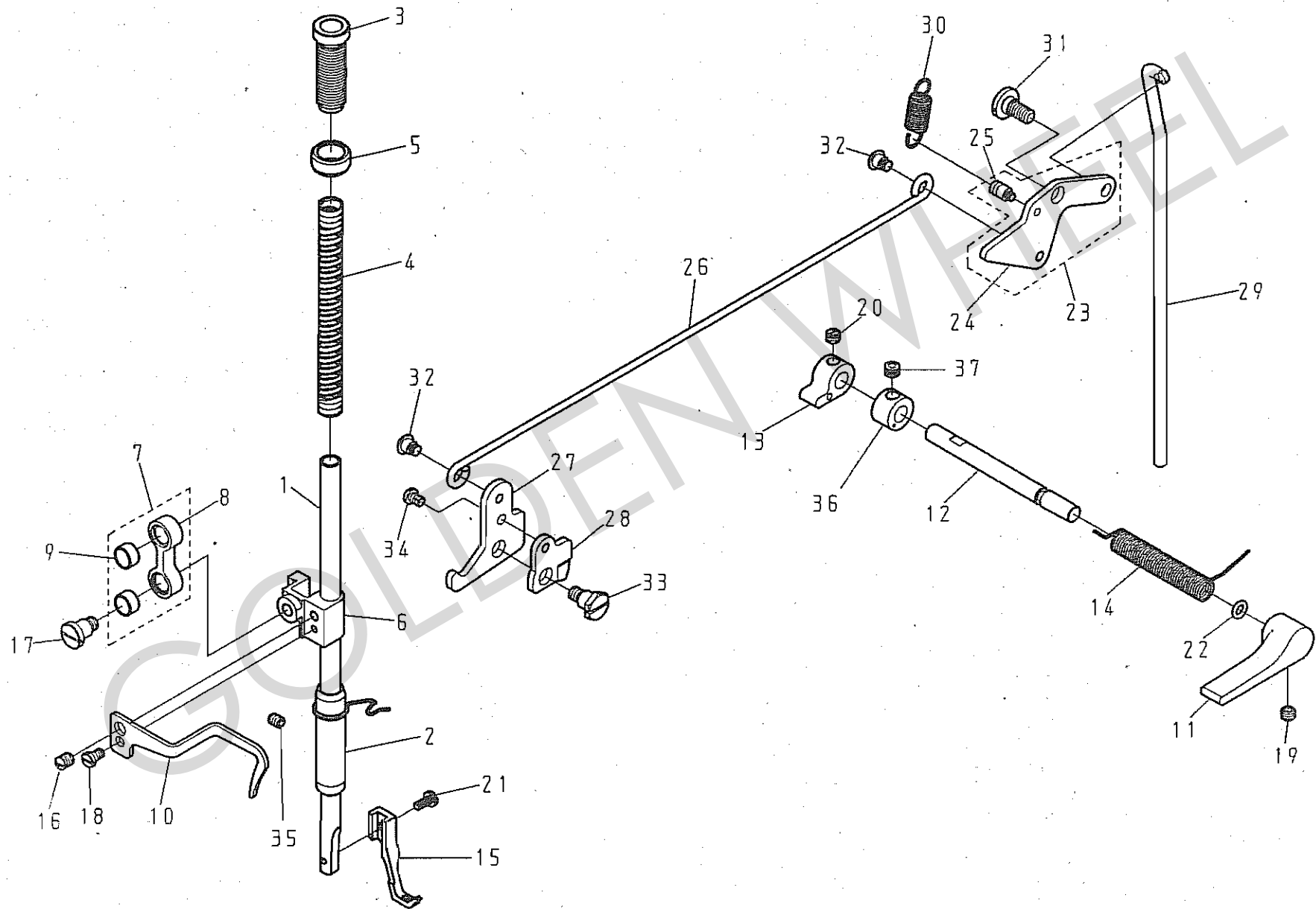
D. CS-6120, CS-6120-BT 上料送料關係 (3/3) UPPER FEED MECHANISM COMPONENTS (3/3)



D. CS-6120, CS-6120-BT 上部送料關係 (3/3) UPPER FEED MECHANISM COMPONENTS (3/3)

REF.No	NOTE	零件號碼	零件名稱	Name of Part	件數	Q'TY	備註
		Part No.			6120	6120-BT	Remarks
1		6120142100	中軸	Driving Shaft	1	1	
2		6120142200	中軸套管	Bushing	2	2	
3		6120142400	中軸連桿(後)	Driving Shaft Rod, Rear	1	1	
4		6120142300	中軸連桿(前)	Driving Shaft Rod, Front	1	1	
5		E1432-1A	滑塊(組)	Slide Block Asm.	1	1	
6		E1433-0A	滑塊	Slide Block	(1)	(1)	
7		E1434-1A	軸	Stud	(1)	(1)	
8		E4044-0A	定環	Thrust Collar	1	1	
9		6120142000	連桿	Feed Drive connecting Link	1	1	
10		ZSA11005	螺絲	Screw 11/64-40 L=5.5	1	1	
11		ZSA11005	螺絲	Screw 11/64-40 L=5.5	1	1	
12		ZSB15014	螺絲	Screw 15/64-28 L=18	1	1	
13		ZSB15014	螺絲	Screw 15/64-28 L=18	1	1	
14		WA069001	平整圈	Washer $\phi 13 \times 1 d=6.2$	1	1	
15		ZSL16003	螺帽	Nut 1/4-24	1	1	
16		ZSA16010	螺絲	Screw 1/4-40 L=4.5	2	2	
17		OPP01080	O形環 11	O-rings $\phi 11$	1	1	
18		ZSK18026	螺絲	Hinge Screw 9/32-28	1	1	
19		ZSL18001	螺帽	Nut 9/32-28	1	2	

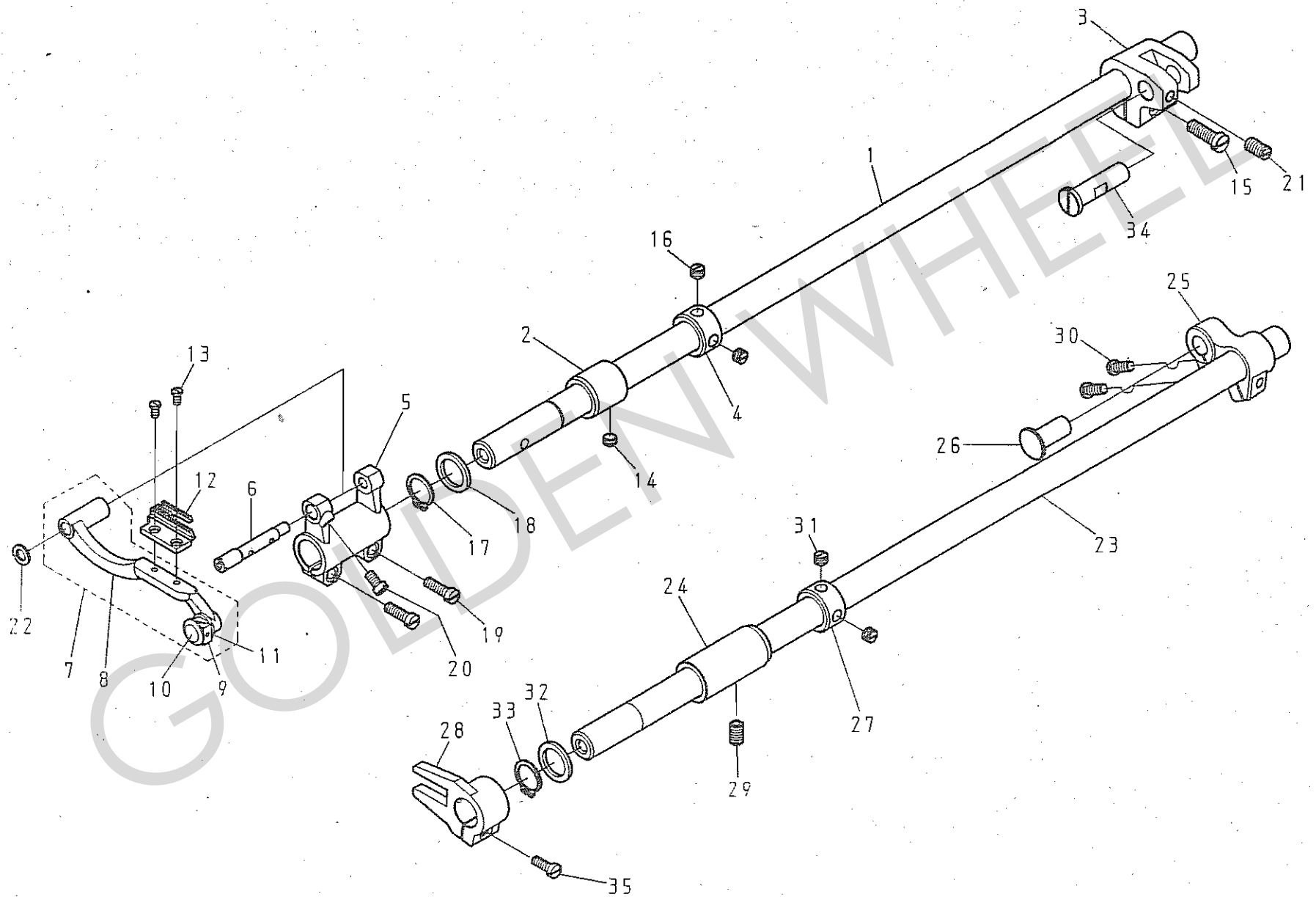
E. CS-6120, CS-6120-BT 押脚・脚弓関係 PRESSURE BAR & KNEE LIFTER COMPONENTS



E. CS-6120、CS-6120-BT 押脚・脚弓關係 PRESSURE BAR & KNEE LIFTER COMPONENTS

REF.No	NOTE	零件號碼 Part No.	零件名稱	Name of Part	件數	Q'TY	備註 Remarks
					6120	6120-BT	
1		6120150100	押棒	Presser Bar	1	1	
2		6120150200	押棒套管	Presser Bar Bushing	1	1	
3		ZSF32001	螺絲	Screw	1	1	
4		6120150400	壓縮彈簧	Presser Spring	1	1	
5		ZSN32001	螺帽	Nut	1	1	
6		6120150500	押棒提昇器	Presser Bar Guide Bracket	1	1	
7		6120152105	押棒提昇器連桿	Presser Bar Guide Bracket Rink Asm.	1	1	
8		6120152100	押棒提昇器連桿	Presser Bar Guide Bracket Rink	(1)	(1)	
9		6120152200	套管	Bushing	(2)	(2)	
10		6120113300	線掛	Thread Guide	1	1	
11		6120150800	押脚提桿	Hand lifter Lever	1	1	
12		6120150900	押脚提桿銷	Presser Bar Lifting Pin	1	1	
13		6120150700	押棒偏心軸	Hand lifter Cam	1	1	
14		6120151101	彈簧	Spring	1	1	
15		E1237-2A	內押脚	Presser foot	1	1	
16		ZSA15028	螺絲	Screw 15/64-28 L=7	1	1	
17		ZSG16002	螺絲	Hinge Screw 1/4-40 D=8 L=7	1	1	
18		ZSB11022	螺絲	Screw 11/64-40 L=7	1	1	
19		ZSA15021	螺絲	Screw 15/64-28 L=4.5	1	1	
20		ZSA15021	螺絲	Screw 15/64-28 L=4.5	1	1	
21		ZSB09017	螺絲	Screw 9/64-40 L=8	1	1	
22		OPP00500	O形環 5	O-rings $\phi 5$	1	1	
23		6120340104	押棒上升臂(結合)	Presser Bar Lifting Link Com.	1	1	
24		6120340100	押棒上升臂	Presser Bar Lifting Link	(1)	(1)	
25		6120341300	螺桿	Spring Hook	(1)	(1)	
26		6120340400	壓棒提昇桿	Side Connecting Bar	1	1	
27		6120344000	壓縮滑座A	Thread Releasing Plate A	1	1	
28		6120344100	壓縮滑座B	Thread Releasing Plate B	1	1	
29		6120343000	連接棒	Lifting Lever Connecting Rod	1	1	
30		H1405-0A	彈簧	Spring	1	1	
31		ZSG16005	螺絲	Hinge Screw 1/4-24 D=8 L=3.4	1	1	
32		ZSG12029	螺絲	Hinge Screw 3/16-28 D=6 L=3.5	2	2	
33		ZSG16057	螺絲	Hinge Screw 15/64-28 D=8 L=6.4	1	1	
34		ZSB11035	螺絲	Screw 11/64-40 L=6	1	1	
35		ZSA11016	螺絲	Screw 11/64-40 L=10	1	1	
36		8610151800	定環	Thrust Collar	1	1	
37		ZSH16005	螺絲	Screw 1/4-40 L=4.5	1	1	

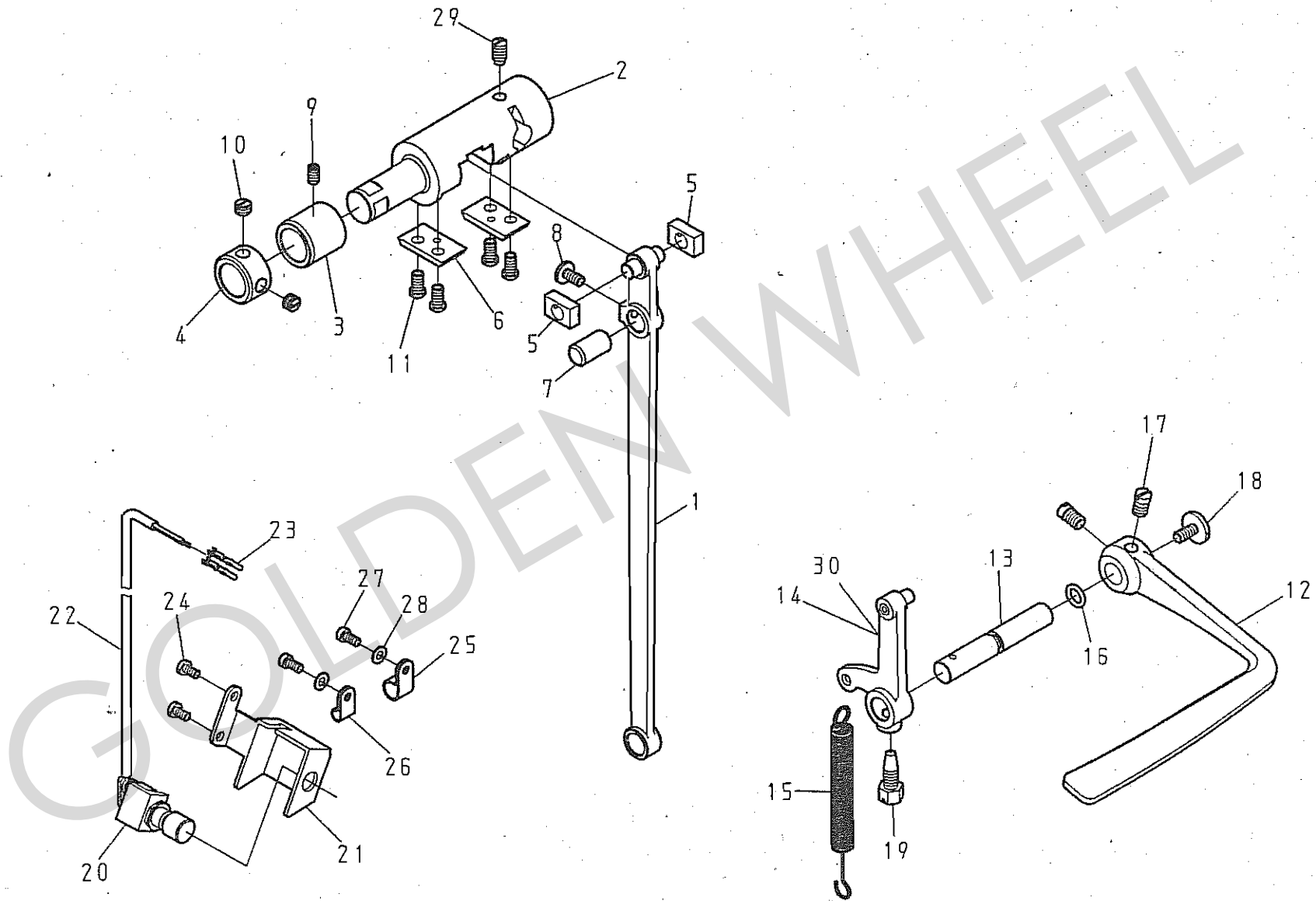
F. CS-6120, CS-6120-BT 下部送料機構 LOWER FEED MECHANISM COMPONENT



F. CS-6120、CS-6120-BT 下部送料關係 LOWER FEED MECHANISM COMPONENTS

REF.No	NOTE	零件號碼 Part No.	零件名稱	Name of Part	件數 6120	Q'TY 6120-BT	備註 Remarks
1		6120160400	搖動軸	Feed Rocker Shaft	1	1	
2		6120160600	搖動軸套管(前)	Bushing, Front	1	1	
3		6120160800	搖動曲軸	Feed Rocker Shaft Crank	1	1	
4		E4044-0A	定環	Thrust Collar	1	1	
5		6120160500	送料台連桿	Feed Bar Rod	1	1	
6		6120164900	送料台軸	Feed Bar Shaft	1	1	
7		6120160105	送料台(組)	Feed Bar Asm.	1	1	
8		6120160100	送料台	Feed Bar	(1)	(1)	
9		A4038-0A	滑駒	Square Block	(1)	(1)	
10		A4037-0A	滑駒鎖	Shaft	(1)	(1)	
11		A4039-0A	平墊圈	Washer $\phi 13 \times 1.5$ d=6.1	(1)	(1)	
12		E6051-0A	送料齒	Feed dog	1	1	
13		ZSB08001	螺絲	Screw 1/8-44 L=6	2	2	
14		ZSA15013	螺絲	Screw 15/64-28 L=4	1	1	
15		ZSB15014	螺絲	Screw 15/64-28 L=18	1	1	
16		ZSA16010	螺絲	Screw 1/4-40 L=4.5	2	2	
17		RB200150	軸用C扣環 15	Retaining Rings-C Type 15	1	1	
18		WA150006	平墊圈	Washer $\phi 20.5 \times 1.9$ d=14.8	1	1	
19		ZSB12012	螺絲	Screw 3/16-28 L=15	2	2	
20		ZSB11012	螺絲	Screw 11/64-40 L=5.5	1	1	
21		ZSA15020	螺絲	Screw 15/64-28 L=11	1	1	
22		WH206002	平墊圈	Washer $\phi 10 \times 1.2$ d=6.2	1	1	
23		6120170300	送料軸	Feed Lifting Rock Shaft	1	1	
24		EJ4041-0A	上送軸套管(左)	Bushing, Front	1	1	
25		6120170500	連桿	Feed Lifting Rock Link	1	1	
26		6120170700	送料桿銷	Feed Rod Shaft	1	1	
27		E4044-0A	定環	Thrust Collar	1	1	
28		6120170800	送料土台二又	Feed Bar Forked Connection	1	1	
29		ZSA15020	螺絲	Screw 15/64-28 L=11	1	1	
30		ZSB12015	螺絲	Screw 3/16-28 L=12	2	2	
31		ZSA16010	螺絲	Screw 1/4-40 L=4.5	2	2	
32		WA150006	平墊圈	Washer $\phi 20.5 \times 1.9$ d=14.8	1	1	
33		RB200150	軸用C扣環 15	Retaining Rings-C Type 15	1	1	
34		6120167600	連接又桿銷	Horizontal Feed Rod Shaft	1	1	
35		ZSB11017	螺絲	Screw 11/64-40 L=12	1	1	

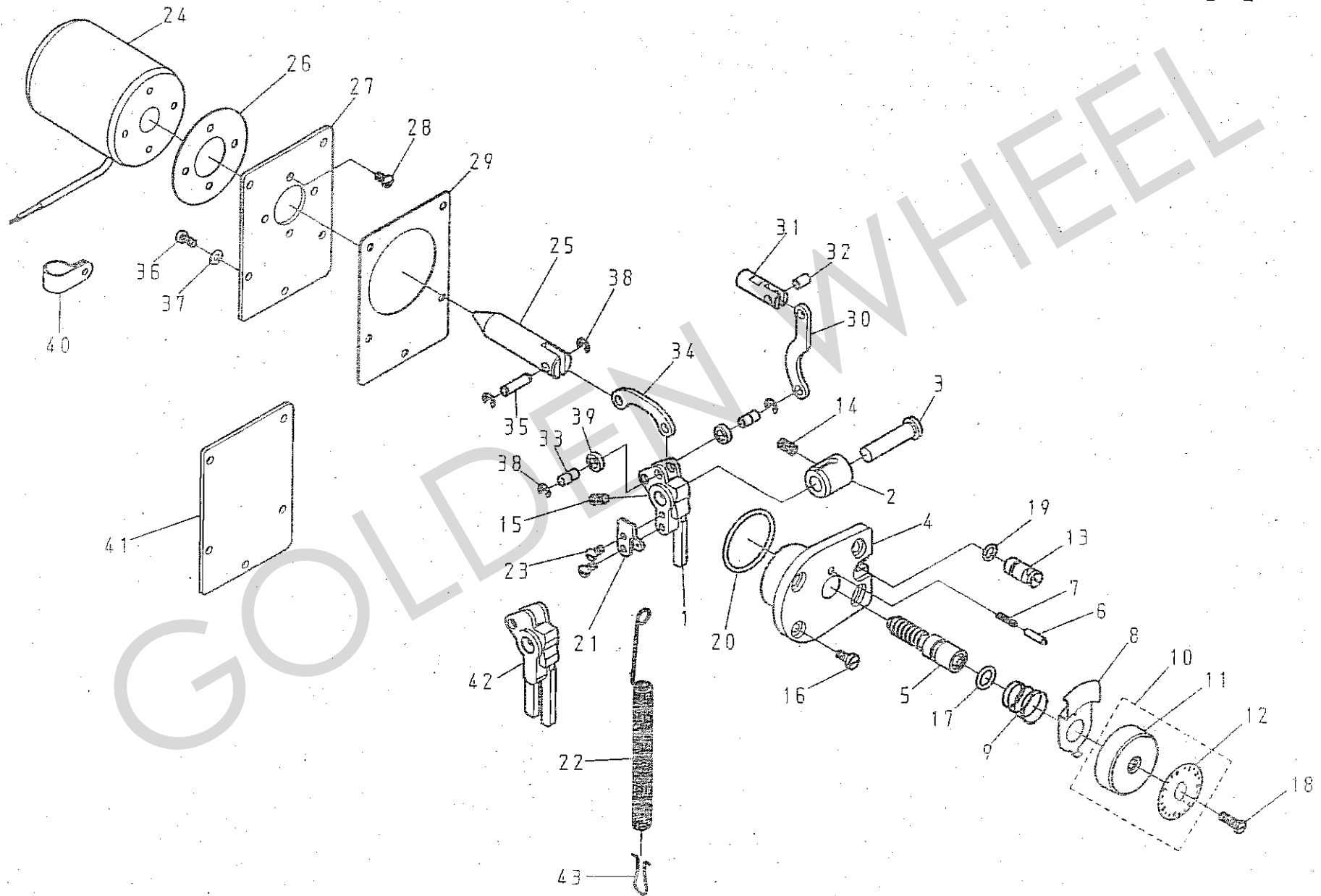
G. CS-6120, CS-6120-BT 縫目調節關係 (1/2) FEED ADJUSTMENT MECHANISM COMPONENTS (1/2)



G. CS-6120, CS-6120-BT 縫目調節關係 (1/2) FEED ADJUSTMENT MECHANISM COMPONENTS (1/2)

REF.No	NOTE	零件號碼	零件名稱	Name of Part	件數	QTY	備註
		Part No.			6120	6120-BT	Remarks
1		6120160904	遮接叉桿(結合)	Horizontal Feed Rod Com.	1	1	
2		6120167000	倒退固定軸	Reverse Block	1	1	
3		6120160600	套管	Bushing	1	1	
4		6120167200	定環	Thrust Collar	1	1	
5		EJ4152-0A	滑駒	Square Block	2	2	
6		EJ4153-0A	滑塊固定板	Guide Plate	2	2	
7		6120167500	倒縫軸連結鎖	Pin	1	1	
8		ZSB11007	螺絲	Screw 11/64-40 L=7	1	1	
9		ZSA11007	螺絲	Screw 11/64-40 L=7	1	1	
10		ZSA16010	螺絲	Screw 1/4-40 L=4.5	2	2	
11		ZSB11018	螺絲	Screw 11/64-40 L=9	4	4	
12		A1160-0A	倒針槓桿	Lever	1	1	
13		6120161800	倒縫軸	Lever Shaft	1	1	
14		A1162-1A	倒縫曲柄(組)	Reverse Feed Crank Asm.	0	1	
15		6120163500	彈簧	Spring	1	1	
16		OPP00680	O形環 7	O-rings $\phi 7$	1	1	
17		ZSB15019	螺絲	Screw 15/64-28 L=9	2	2	
18		ZSB12011	螺絲	Screw 3/16-28 L=10	1	1	
19		ZSD15003	螺絲	Screw 15/64-28 L=16.5	1	1	
20		6120280100	開關器	Back Touch Switch	0	1	
21		6120280200	開關箱	Switch Cover	0	1	
22		VW023113	電線	2-C Cable	0	1	
23		VJ032118	空中接頭標準型公端	Pin Terminal	0	2	
24		ZSB11032	螺絲	Screw 11/64-40 L=7.8	0	2	
25		RU20UC-2	電線掛架	Cord Holder	0	1	
26		RU20UC05	電線掛架	Cord Holder	0	1	
27		ZSB11011	螺絲	Screw 11/64-40 L=9	0	2	
28		WA049003	平墊圈	Washer $\phi 9 \times 0.8$ d=4.6	0	2	
29		ZSA15037	螺絲	Screw 15/64-28 L=10.5	1	1	
30		A1162-0A	倒縫曲柄(組)	Reverse Feed Crank Asm.	1	0	

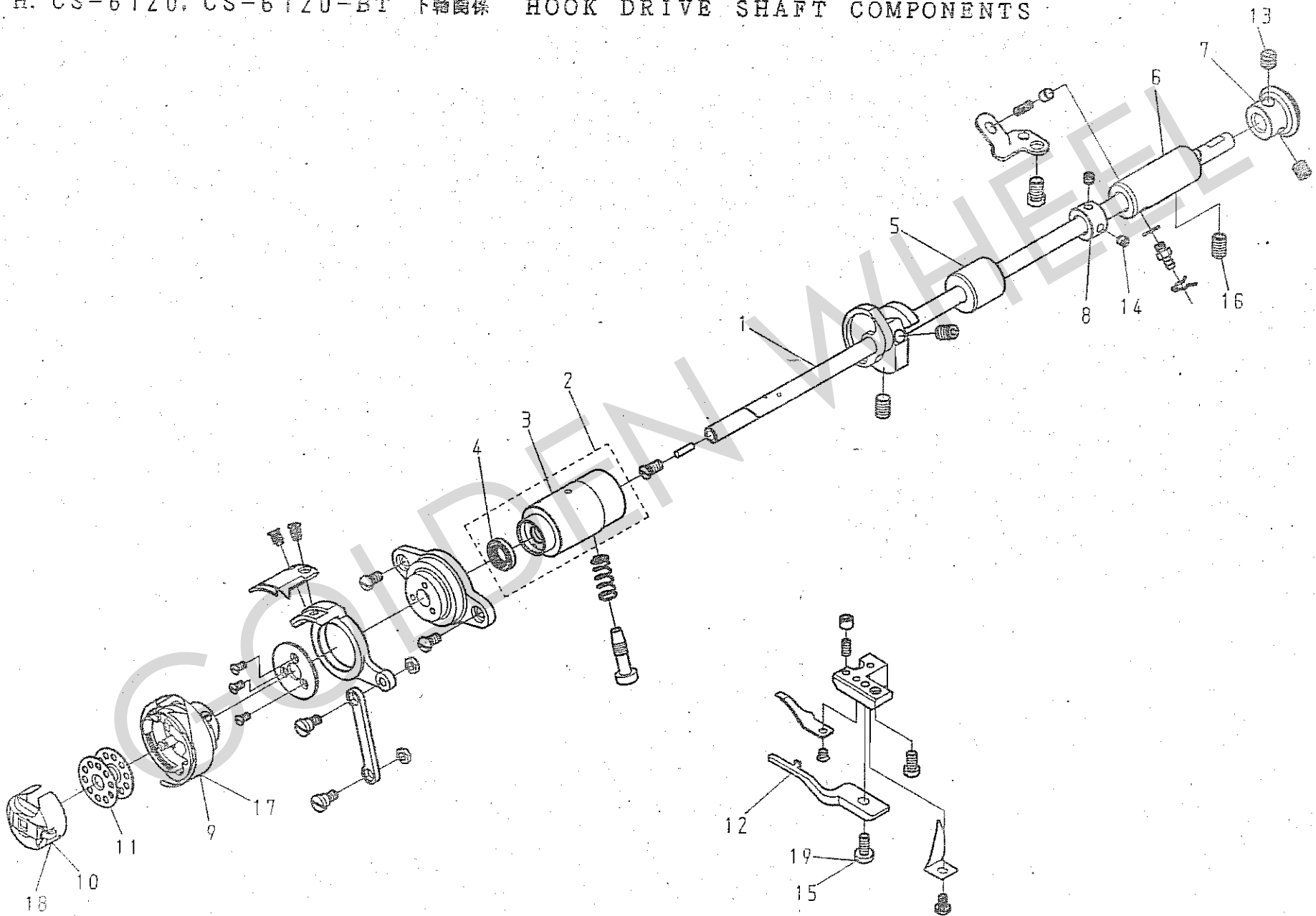
G. CS-6120, CS-6120-BT 總目調節機構 (2/2) FEED ADJUSTMENT MECHANISM COMPONENTS (2/2)



G. CS-6120、CS-6120-BT 縫目調節關係 (2/2) FEED ADJUSTMENT MECHANISM COMPONENTS (2/2)

REF.	NOTE	零件號碼 Part No.	零件名稱 Name of Part	件數 Q'TY	備註 Remarks
				6120	6120-BT
1		6120161100	送料調節桿 --- Feed Regulator	0	1
2		6120162800	送料調節桿套管 --- Bushing	1	1
3		6120161500	送料調節桿銷 --- Feed Regulator Shaft	1	1
4		6120162200	送料調節桿座 --- Stitch Dial Base	1	1
5		6120164300	方牙棒 --- Feed Regulating Screw	1	1
6		E1171-2A	定位銷 --- Pin	1	1
7		E1158-0A	彈簧 --- Spring	1	1
8		E1173-2A	操作板 --- Stopper Pin Releasing Lever	1	1
9		E1174-2A	彈簧 --- Spring	1	1
10		6120164005	刻度盤(組) --- Dial Asm.	1	1
11		E1172-2A	刻度盤 --- Dial	(1)	(1)
12		6120164100	刻度板 --- Dial plate	(1)	(1)
13		6120164400	偏心銷 --- Eccentric Pin	1	1
14		ZSA15020	螺絲 --- Screw 15/64-28 L=11	1	1
15		ZSB15006	螺絲 --- Screw 15/64-28 L=8.5	1	1
16		ZSB11026	螺絲 --- Screw 11/64-40 L=10	4	4
17		OP00100A	O形環 10A --- O-rings ϕ 10	1	1
18		ZSB12017	螺絲 --- Screw 3/16-28 L=15	1	1
19		OPP00680	O形環 7 --- O-rings ϕ 7	1	1
20		OPP03550	O形環 35.5 --- O-rings ϕ 35.5	1	1
21		6220161300	彈簧鉤板 --- Bracket	0	1
22		6120161201	彈簧 --- Spring	0	1
23		ZSB11024	螺絲 --- Screw 11/64-40 L=8	0	2
24		E1701-2A	倒縫電磁閥 --- Reverse Feed Solenoid	0	1
25		E1703-2A	作動體 --- Core	0	1
26		E1702-2A	油封 --- Packing	0	1
27		6120168000	橫蓋 --- Arm Side Cover	0	1
28		ZSB11024	螺絲 --- Screw 11/64-40 L=8	0	4
29		6120168100	墊片 --- Packing	1	1
30		6120168200	送料連桿 --- Feed Connecting Link	1	1
31		6120168300	固定銷 --- Set Pin	1	1
32		6120168400	銷 --- Pin	1	1
33		6120168500	銷 --- Pin	1	2
34		6120168600	送料連桿 --- Feed Connecting Link	0	1
35		E4414-2A	銷 --- Pin	0	1
36		ZSB11017	螺絲 --- Screw 11/64-40 L=12	5	5
37		WA049003	平整圈 --- Washer ϕ 9 \times 0.8 d=4.6	5	5
38		RE000040	E型扣環 --- E-Shaped Snap Rings (4mm)	1	4
39		WA060013	平整圈 --- Washer ϕ 11 \times 3.5 d=6	1	2
40		RU20UC-3	電線掛架 --- Cord Holder	0	1
41		6120111200	橫蓋 --- Arm Side Cover	1	0
42		6120165300	送料調節桿 --- Feed Regulator	1	0
43		6120161202	掛鉤 --- Spring Holder	0	1

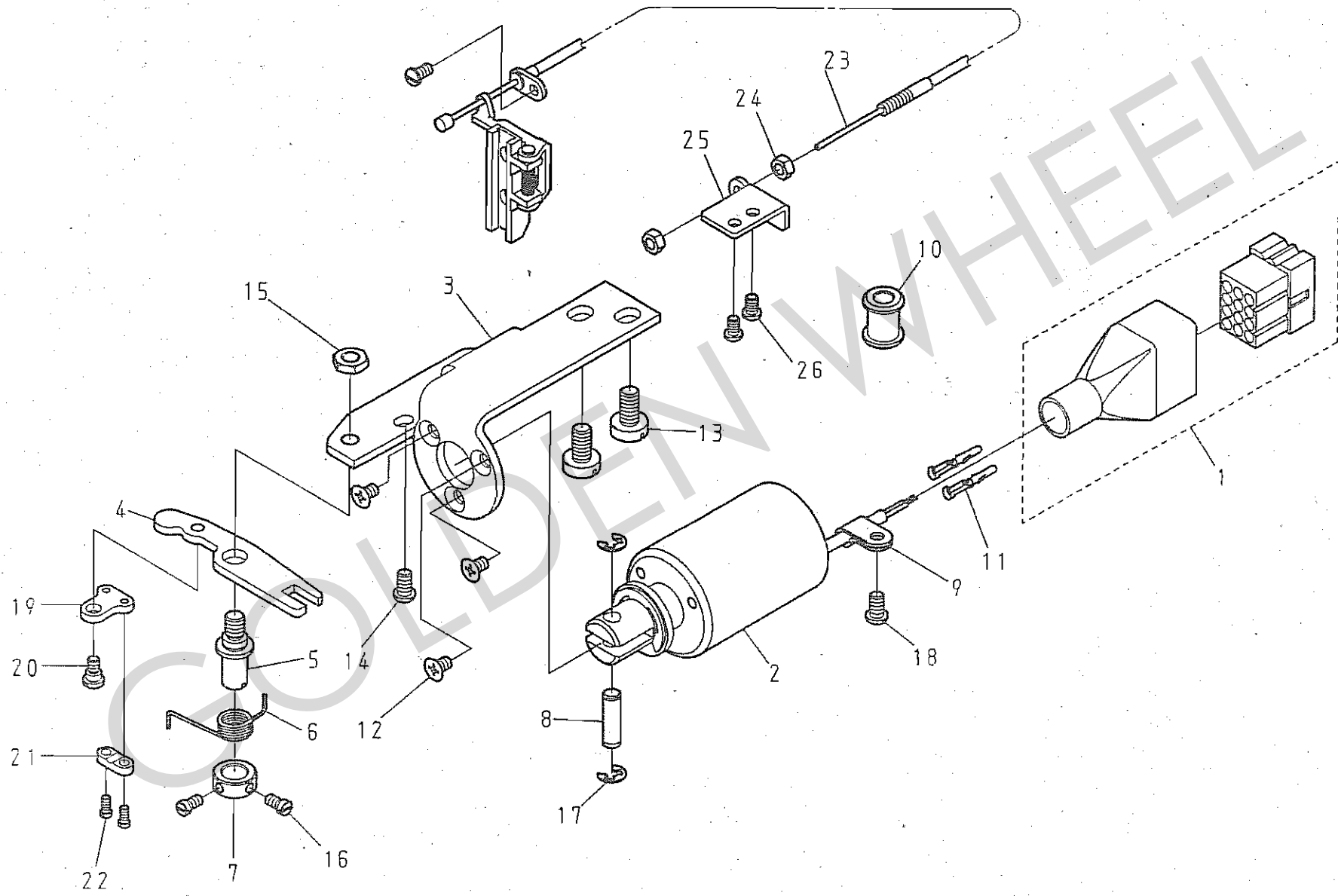
H. CS-6120, CS-6120-BT 下轴圖樣 HOOK DRIVE SHAFT COMPONENTS



H. CS-6120、CS-6120-BT 下軸關係 HOOK DRIVE SHAFT COMPONENTS

REF.No	NOTE	零件號碼	零件名稱	Name of Part	件數	Q'TY	備註
		Part No.			6120	6120-BT	Remarks
1		6120180100	下軸	Hook Driving Shaft	1	1	
2		6120180305	下軸套管(左)(組)	Bushing, Front Asm.	1	1	
3		6120180300	下軸套管(左)	Bushing, Front	(1)	(1)	
4		OAVCBG1406E0	油蓋	Oil Seal	(1)	(1)	
5		6120180400	下軸套管(中)	Bushing, Center	1	1	
6		6120180500	下軸套管(右)	Bushing, Rear	1	1	
7		A4021-0A	斜齒輪(小)	Screw Gear, Back	1	1	
8		E4014-0A	定環	Thrust Collar	1	1	
9		E6100-2A	梭頭	Hook	0	1	
10		E6105-2A	梭殼	Bobbin Case	0	1	
11		E7006-1B	梭仔	Bobbin	1	1	
12		E6016-0A	牛角	Bobbin Case Positioning Finger	1	1	
13		ZSA16011	螺絲	Screw 1/4-40 L=7	2	2	
14		ZSA11011	螺絲	Screw 11/64-40 L=4.5	2	2	
15		ZSB11026	螺絲	Screw 11/64-40 L=10	0	1	
16		ZSA15020	螺絲	Screw 15/64-28 L=11	1	1	
17		E6100-1A	梭頭	Hook	1	0	
18		E6105-1A	梭殼	Bobbin Case	1	0	
19		ZSB11092	螺絲	Screw 11/64-40 L=15	1	0	

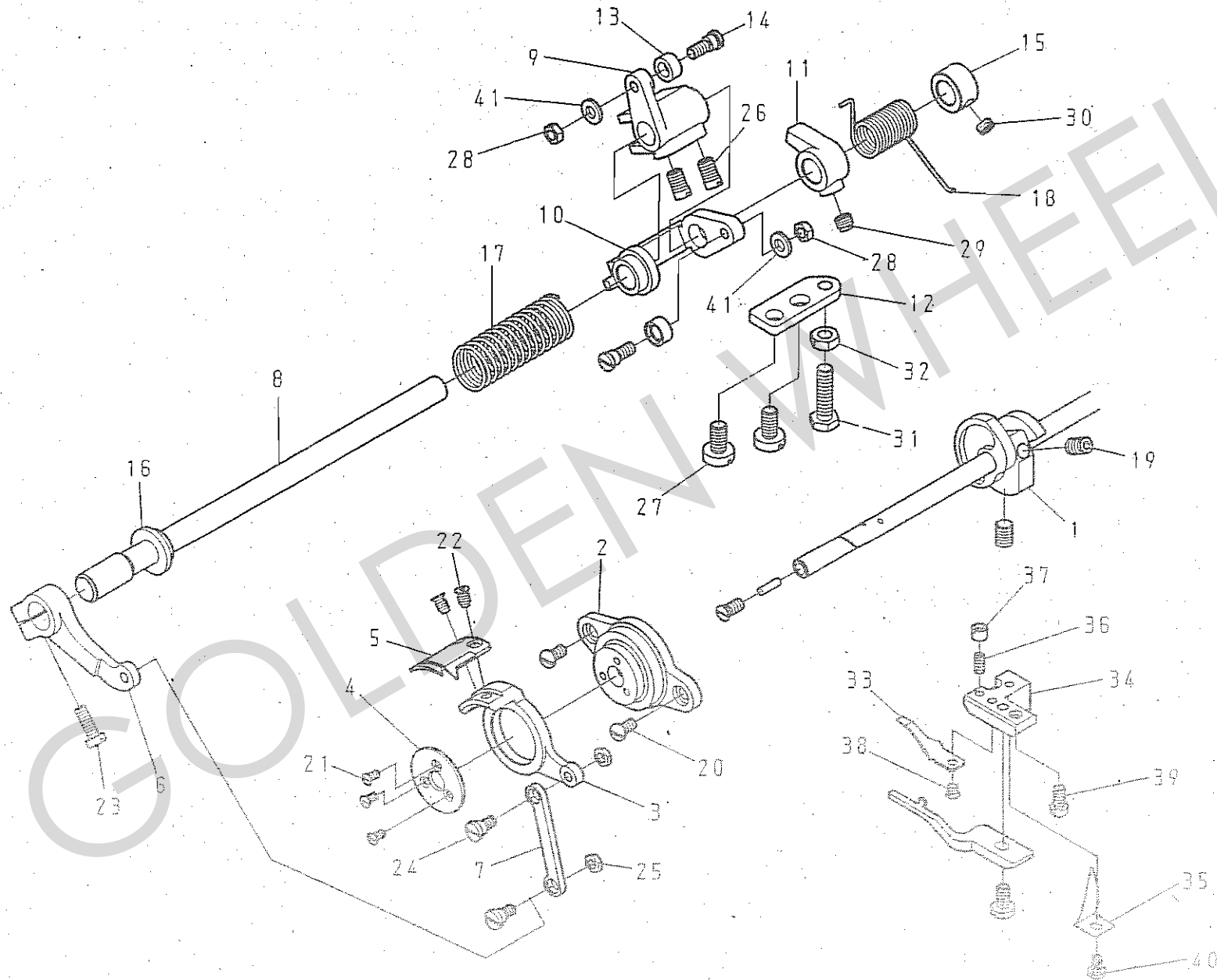
I. CS-6120, CS-6120-BT 切線關係 (1/2) THREAD TRIMMER COMPONENTS (1/2)



I. CS-6120、CS-6120-BT 切線關係 (1/2) THREAD TRIMMER COMPONENTS (1/2)

REF.No	NOTE	零件號碼 Part No.	零件名稱 Name of Part	件數 Q'TY		備註 Remarks
				6120	6120-BT	
1		VJ032121	空中接頭(組) --- Connector Cover Asm. ---	0	1	
2		E4412-2A	切線電磁閥(組) --- Thread Cutting Solenoid Asm. ---	0	1	
3		E4411-2A	電磁閥固定板 --- Solenoid Instaling Base ---	0	1	
4		E4415-2A	驅動板 --- Flexible Driving lever ---	0	1	
5		ZSK15003	螺絲 --- Screw 15/64-28 ---	0	1	
6		E4417-2A	彈簧 --- Spring ---	0	1	
7		E4418-2A	定環 --- Thrust Collar ---	0	1	
8		E4414-2A	銷 --- Pin ---	0	1	
9		RU20UC05	電線掛架 --- Cord Holder ---	0	1	
10		E1077-2A	電線保護套管 --- Strain Relief Bushing ---	0	1	
11		VJ032118	空中接頭標準型公端 Pin Terminal ---	0	2	
12		ZMC04005	螺絲 --- Screw M4-0.7 L=6.5 ---	0	3	
13		ZSB15034	螺絲 --- Screw 15/64-28 L=12 ---	0	2	
14		ZSB11024	螺絲 --- Screw 11/64-40 L=10 ---	0	1	
15		ZSL15001	螺帽 --- Nut 15/64-28 ---	0	1	
16		ZSB09018	螺絲 --- Screw 9/64-40 L=6.5 ---	0	2	
17		RE000040	E型扣環 --- E-Shaped Snap Rings (4mm) ---	0	2	
18		ZSB11024	螺絲 --- Screw 11/64-40 L=10 ---	0	1	
19		E4419-2A	鋼索固定板(A) --- Bracket ---	0	1	
20		ZSG11009	螺絲 --- Hinge Screw ---	0	1	
21		E4420-2A	鋼索固定板(B) --- Bracket ---	0	1	
22		ZSB08014	螺絲 --- Screw 1/8-44*6.8 ---	0	2	
23		6120314805	鋼索管(組) --- Flexible Wire Asm. ---	0	1	
24		ZML05002	螺帽 --- Nut M5 x 0.8 ---	0	2	
25		E4421-2A	鋼索固定板(C) --- Holder ---	0	1	
26		ZSB11022	螺絲 --- Screw 11/64-40*7 ---	0	2	

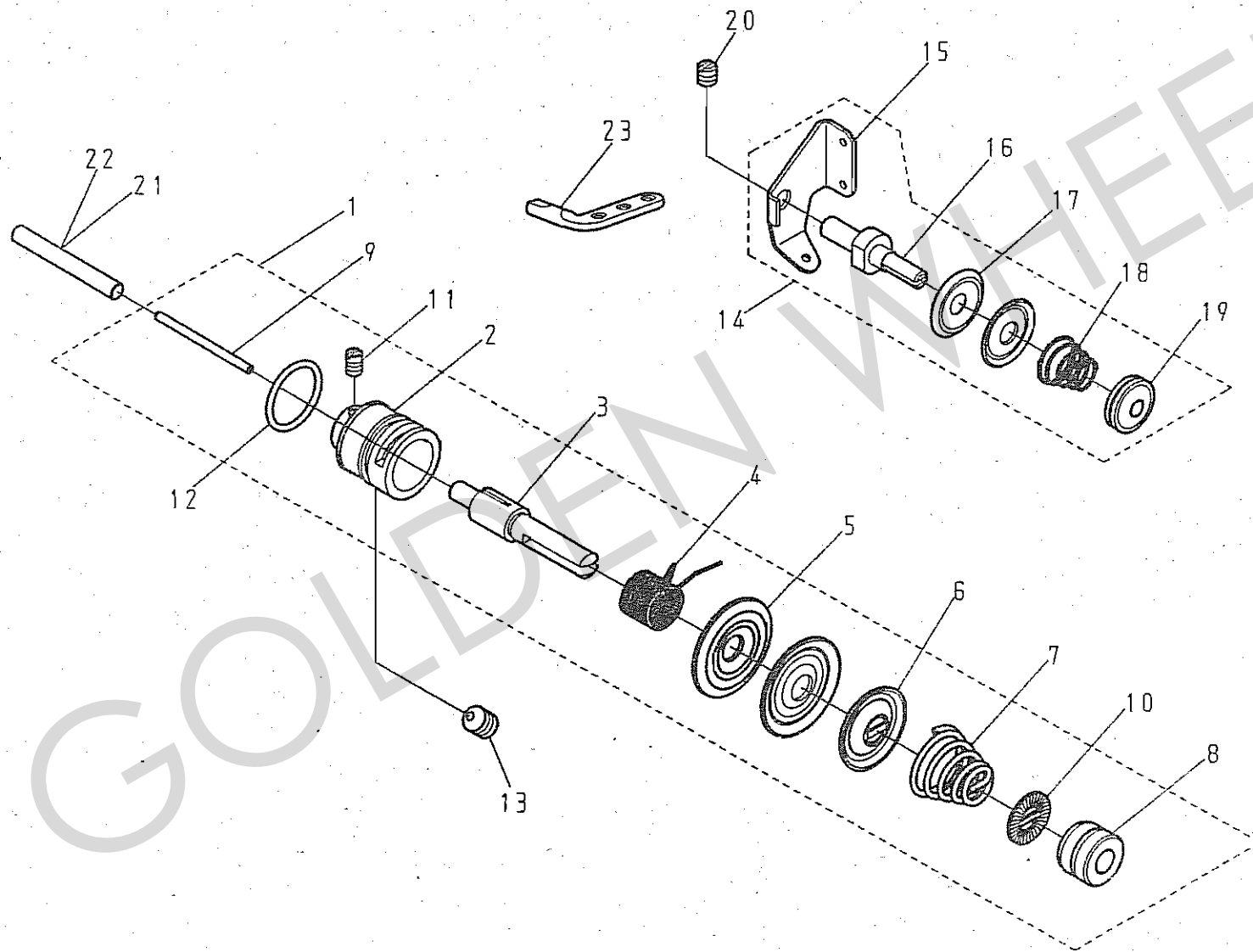
I. CS-6120, CS-6120-BT 切線關係 (2/2) THREAD TRIMMER COMPONENTS (2/2)



I. CS-6120, CS-6120-BT 切線關係 (2/2) THREAD TRIMMER COMPONENTS (2/2)

REF.NO	NOTE	零件號碼	零件名稱	Name of Part	件數		備註
		Part No.			6120	6120-BT	
1		E4015-2A	切線凸輪	Thread Trimmer Cam	0	1	
2		E6115-2A	台座	Knife Holding Bracket Saddle	0	1	
3		E6112-2A	活動刀片座	Knife Base	0	1	
4		E6117-2A	蓋板	Special Washer	0	1	
5		E6110-2A=>3A	活動刀片	Movable Knife	0	1	
6		E6114-2A	驅動腕	Knife Driving Crank	0	1	
7		E6113-2A	連桿	Link	0	1	
8		6120240100	切線搖動軸	Knife Driving Shaft	0	1	
9		E4458-2A	追從腕(A)	Cam Follower Crank A	0	1	
10		E4459-2A	追從腕(B)	Cam Follower Crank B	0	1	
11		E4455-2A	停止腕	Stopper	0	1	
12		E4465-2A	停止板	Stopper Plate	0	1	
13		E4460-2A	導塊	Roller	0	2	
14		ZSG12032	螺絲	Hinge Screw 3/16-28 D=6 L=3.6	0	2	
15		E4454-2A	定環	Thrust Collar	0	1	
16		E4457-2A	彈簧座	Bushing	0	1	
17		E4461-2A	彈簧	Spring	0	1	
18		E4456-2A	彈簧	Spring	0	1	
19		ZSH16004	螺絲	Screw 1/4-40 L=10	0	2	
20		ZSB11024	螺絲	Screw 11/64-40 L=8	0	2	
21		ZSC08002	螺絲	Screw 1/8-44 L=6	0	3	
22		ZSC11005	螺絲	Screw 11/64-40 L=7	0	2	
23		ZSB11019	螺絲	Screw 11/64-40 L=13	0	1	
24		ZSG11008	螺絲	Hinge Screw 11/64-40 D=6 L=3.1	0	2	
25		ZSL11005	螺帽	Nut 11/64-40	0	2	
26		ZSB15013	螺絲	Screw 15/64-28 L=8	0	2	
27		ZSB15034	螺絲	Screw 15/64-28 L=12	0	2	
28		ZSL12004	螺帽	Nut 3/16-28	0	2	
29		ZSA16011	螺絲	Screw 1/4-40 L=7	0	1	
30		ZSA16029	螺絲	Screw 1/4-40 L=3.5	0	1	
31		ZSD15008	螺絲	Screw 15/64-28 L=23	0	1	
32		ZSL15004	螺帽	Nut 15/64-28	0	1	
33		E6111-2A	固定刀片	Fixed Knife	0	1	
34		E6118-2A	固定刀片固定板	Fixed Knife Base	0	1	
35		E6119-2A	線定位板	Thread Guide	0	1	
36		ZSA09003	螺絲	Screw 9/64-40 L=8.5	0	1	
37		ZSN09001	螺帽	Nut 9/64-40	0	1	
38		ZSC09011	螺絲	Screw 9/64-40 L=4.5	0	1	
39		ZSB11011	螺絲	Screw 11/64-40 L=9	0	1	
40		ZSB09011	螺絲	Screw 9/64-40 L=6.5	0	1	
41		WA059008	平墊圈	Washer $\phi 10 \times 1.5 d=5.2$	0	2	

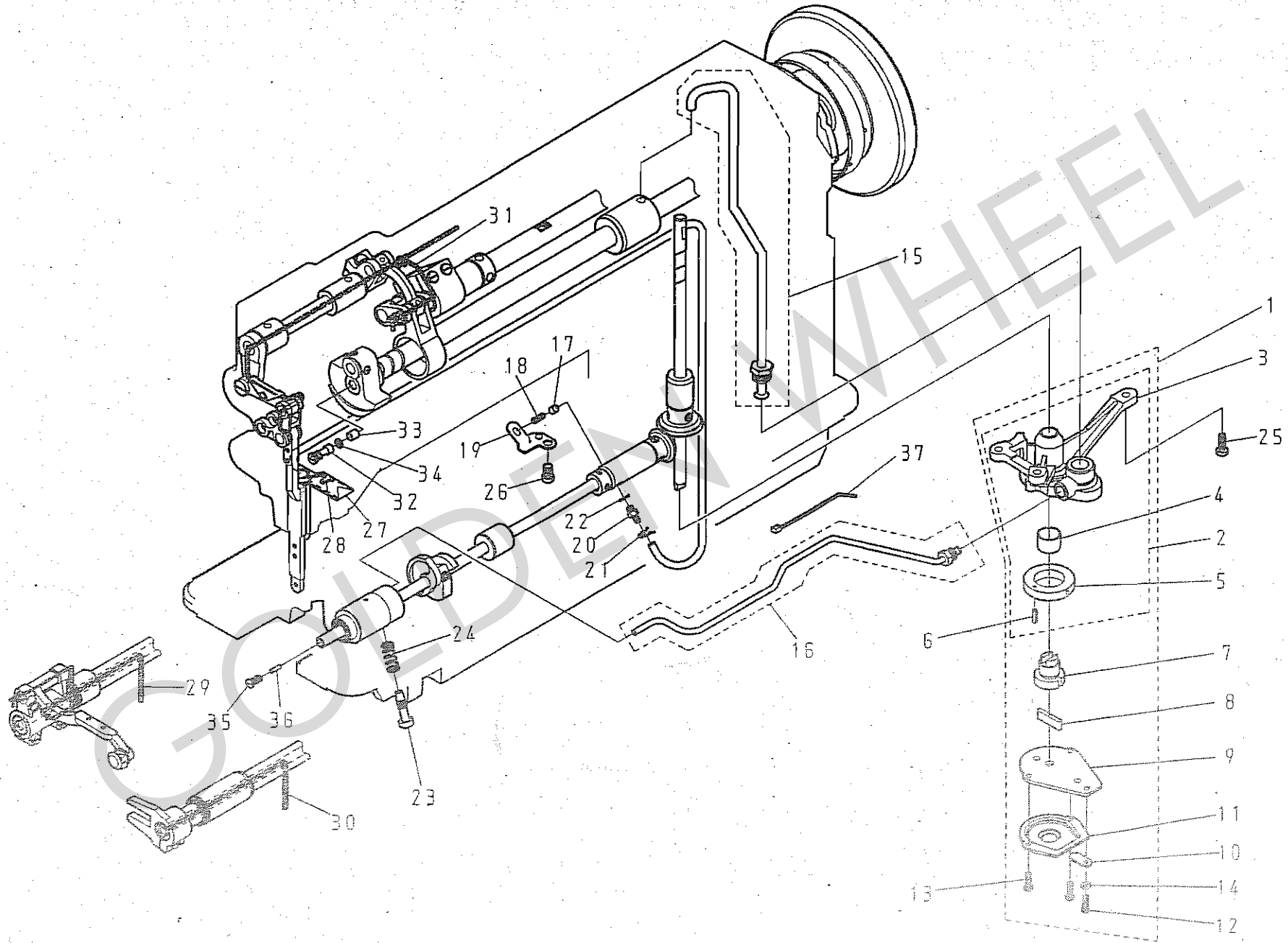
J. CS-6120, CS-6120-BT 縫紉壓力調節關係 UPPER THREAD TENSION REGULATOR
MECHANISM COMPONENT



J. CS-6120, CS-6120-BT 縫線壓力調節關係 UPPER THREAD TENSION REGULATOR MECHANISM COMPONENTS

REF.No	NOTE	零件號碼 Part No.	零件名稱 Name of Part	件數 6120	QTY 6120-BT	備註 Remarks
1		6120310505	縫線壓力調節(組) Thread Tension Regulator Asm.	1	1	
2		E1029-0A	彈簧座 Thread Tension Post Bracket	(1)	(1)	
3		E1026-0A	調整螺絲桿 Thread Tension Post	(1)	(1)	
4		E1027-0A	吊線彈簧 A Spring A	(1)	(1)	
5		A1025-0A	壓線盤 Tension Disk	(2)	(2)	
6		A1022-0A	線調整壓盤 Tension Regulator Presser Disk	(1)	(1)	
7		E1021-0A	彈簧 Tension Spring	(1)	(1)	
8		ZSN16001	螺帽 Nut 1/4-40	(1)	(1)	
9		6120312200	銷 Tention Releasing Pin	(1)	(1)	
10		A1042-0A	墊片 Tension Disk Stopper	(1)	(1)	
11		ZSB09013	螺絲 Screw 9/64-40 L=4	(1)	(1)	
12		OPP01450	O形環 15 O-rings ϕ 15	(1)	(1)	
13		ZSA15025	螺絲 Screw 15/64-28 L=6	1	1	
14		E1020-2A	縫線壓力調節(組) Thread Tension Regulator Asm.	0	1	
15		E1038-2A	上線壓力板 Upper Thread Tension Plate	0	(1)	
16		E1026-2A	調整螺絲桿 Thread Tension Post	0	(1)	
17		E1025-2A	壓線盤 Tension Disk	0	(2)	
18		E1021-2A	彈簧 Tension Spring	0	(1)	
19		ZSN11001	螺帽 Nut 11/64-40	0	(1)	
20		ZSA11003	螺絲 Screw 11/64-40 L=5	1	1	
21		6120312500	銷 Tention Releasing Pin	0	1	
22		6120312400	銷 Tention Releasing Pin	1	0	
23		A1051-0A	線掛 Thread Guide	1	0	

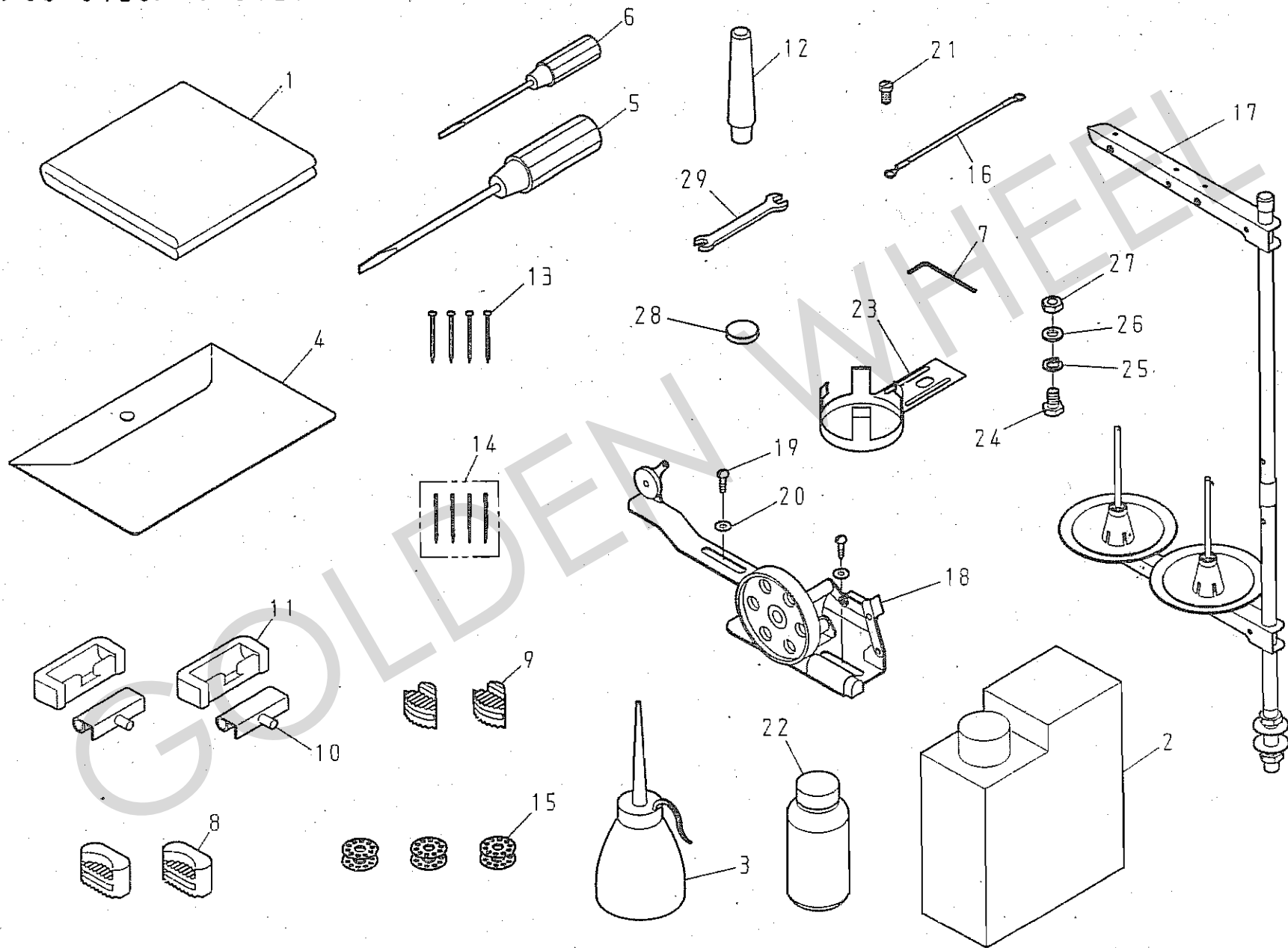
K. CS-6120, CS-6120-BT 油潤滑關係 OIL LUBRICATION MECHANISM COMPONENTS



L. CS-6120、CS-6120-BT 油潤滑關係 OIL LUBRICATION MECHANISM COMPONENTS

REF.No	NOTE	零件號碼 Part No.	零件名稱	Name of Part	件數 6120	Q'TY 6120-BT	備註 Remarks
1		6120358005	加油泵浦座(組)	Rotary Pump Asm.	1	1	
2		6120358004	泵浦座(結合)	Rotary Pump Com.	(1)	(1)	
3		6120358000	泵浦座	Housing	((1))	((1))	
4		6120358100	套管	Bushing	((1))	((1))	
5		6120358200	偏心套管	Casing	((1))	((1))	
6		YD030010	彈簧銷	Spring Pin 3.0X10	((1))	((1))	
7		6120358300	回轉子	Rotor	(1)	(1)	
8		6120358400	滑塊	Sliding Block	(1)	(1)	
9		6120358500	泵浦板	Housing Plate	(1)	(1)	
10		6120358600	油量調節板	Oil Adjusting Plate	(1)	(1)	
11		6120358704	濾網板(結合)	Filter Screen Plate Com.	(1)	(1)	
12		ZSB08016	螺絲	Screw 1/8-44 L=12	(1)	(1)	
13		ZSB08016	螺絲	Screw 1/8-44 L=12	(2)	(2)	
14		WB031001	彈簧墊圈	Spring Lock Washers ϕ 3.6	(1)	(1)	
15		6120358905	上軸油導管(組)	Oil Pipe Asm.	1	1	
16		6120359105	下軸油導管(組)	Oil Pipe Asm.	1	1	
17		6120359400	作動銷	Plunger	1	1	
18		6120359500	彈簧	Spring	1	1	
19		6120359300	彈簧壓板	Plunger Thrust Plate	1	1	
20		6120354000	接頭	Connecting Screw	1	1	
21		6120353400	固定彈簧	Oil tube Holder	1	1	
22		6120353900	油封	Gasket	1	1	
23		6120354100	油量調節螺絲	Oil Adjusting Screw	1	1	
24		C7031-0A	彈簧	Spring	1	1	
25		ZSB11019	螺絲	Screw 11/64-40 L=13	3	3	
26		ZSB15019	螺絲	Screw 15/64-28 L=9	1	1	
27		6120357005	油綿(組)	Felt Asm.	1	1	
28		6120353500	油綿壓板	Felt Holder	1	1	
29		XA300340	油線	Oil Wick	1	1	
30		XA300260	油線	Oil Wick	1	1	
31		XA300080	油線	Oil Wick	1	1	
32		6120354200	油量調節銷	Oil Adjusting pin	1	1	
33		6120354300	油量調節橡膠	Oil Adjusting Rubber	1	1	
34		OPP00350	O形環 4	O-rings ϕ 4	1	1	
35		6120354400	螺絲	Screw	1	1	
36		6120354500	濾器	Filter	1	1	
37		RU010100	尼龍繫線帶	Nylon Cable Tie	1	1	

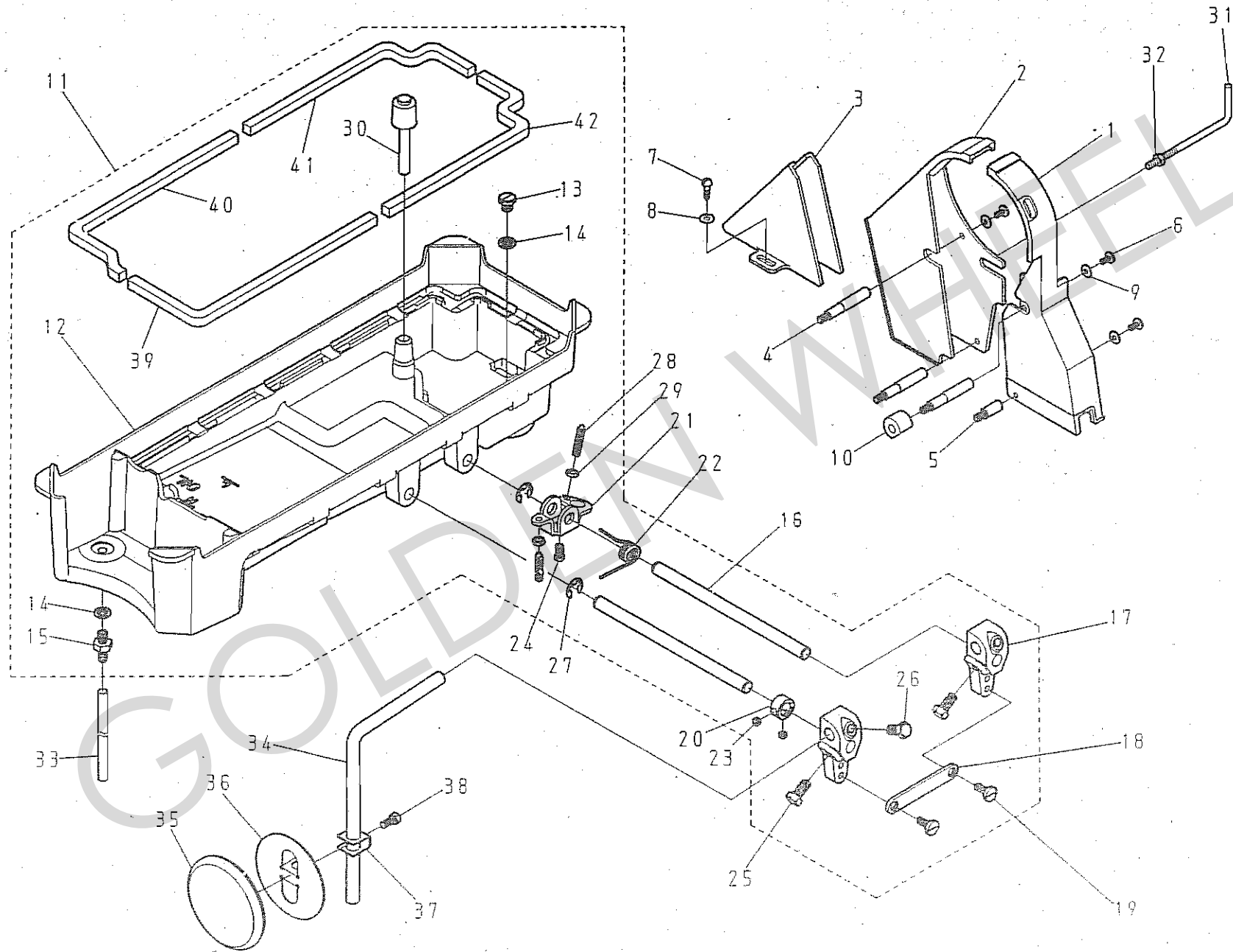
L. CS-6120, CS-6120-BT 附件圖係 (1/2) ACCESSORIES (1/2)



M. CS-6120、CS-6120-BT 附件關係 (1/2) ACCESSORIES (1/2)

REF.No	NOTE	零件號碼	零件名稱	Name of Part	件數	Q'TY	備註
		Part No.			6120	6120-BT	Remarks
1		C7001-0A	車頭蓋	Cover	1	1	
2		A7012-2A	油壺(大)	Oil Can	1	1	
3		A7012-1A	油壺(中)	Oiler	1	1	
4		A7000-0A	工具袋	Accessory Box	1	1	
5		A7010-1A	螺絲起子(中)	Screw Driver (middle)	1	1	
6		A7010-0A	螺絲起子(小)	Screw Driver (small)	1	1	
7		TLA020	六角型螺絲起子2mm	Hexagonal Wrench Key(2mm)	0	1	
8		EJ7026-0A	防振橡膠	Vibration Preventing Rubber	2	2	
9		EJ7026-1A	防振橡膠	Vibration Preventing Rubber	2	2	
10		F7021-0A	後鈕鉤	Head Hinge	2	2	
11		F7022-0A	後鈕座	Rubber Hinge	2	2	
12		A7025-0A	枕木	Head Rest Wood	1	1	
13		A7011-0A	鐵釘	Nail	4	4	
14		INDP × 17-22	針	Needle DP × 17-22	1	1	
15		E7006-1B	梭仔	Bobbin	3	3	
16		6120914005	印記線	Ground Wire Asm.	1	1	
17		J7050-0A	線架	Thread Stand	1	1	
18		A7040-0A	捲線器組	Bobbin Winder	1	1	
19		ZMT05001	木螺絲	Wood Screw L=18	2	2	
20		WA059003	平墊圈	Washer $\phi 12 \times 0.7$ d=5.2	2	2	
21		ZSB11011	螺絲	Screw 11/64-40 L=9	1	1	
22		A7012-0A	油壺(小)	Oiler	1	1	
23		A7009-0A	油壺固定架	Oiler Bracket	1	1	
24		ZMD06004	螺絲	Screw M6 × 1.0 L=12	1	1	
25		WB060002	彈簧墊圈	Spring Lock Washers	1	1	
26		WA069002	平墊圈	Washer $\phi 13 \times 1$ d=6.5	1	1	
27		ZML06004	螺帽	Nut M6 × 1.0	1	1	
28		EJ4108-0A	磁鐵	Magnet	1	1	
29		TRB12X14	開口扳手	Wrench 14 × 12	1	1	

L. CS-6120, CS-6120-BT 附件圖係 (2/2) ACCESSORIES (2/2)



M. CS-6120、CS-6120-BT 附件關係 (2/2) ACCESSORIES (2/2)

REF.No	NOTE	零件號碼 Part No.	零件名稱	Name of Part	件數 6120	QTY 6120-BT	備註 Remarks
1		6120335100	皮帶蓋 A	Belt Cover A	1	1	
2		6120335200	皮帶蓋 B	Belt Cover B	1	1	
3		6120335500	皮帶蓋 C	Belt Cover C	1	1	
4		6120335300	皮帶蓋固定螺絲	Belt Cover Stud	3	3	
5		6120335700	皮帶蓋固定螺絲	Belt Cover Stud	1	1	
6		ZSB11078	螺絲	Screw 11/64-40 L=9	4	4	
7		ZMT05003	木螺絲	Wood Screw D=8.3 L=18	2	2	
8		WA059003	平墊圈	Washer $\phi 12 \times 0.7$ d=5.2	2	2	
9		WA049005	平墊圈	Washer $\phi 11 \times 1$ d=4.5	4	4	
10		E1169-2A	緩衝體	Rubber Ring	1	1	
11		6120350105	下油槽(組)	Oil Pan Asm.	1	1	
12		6120350100	下油槽	Oil Pan	(1)	(1)	
13		ZSB20014	螺絲	Screw	(1)	(1)	
14		EJ4109-0A	墊圈	Spacer	(2)	(2)	
15		6120354600	接頭	Connecting Screw	(1)	(1)	
16		6120341700	腳押直桿	Knee Lifter Shaft	(2)	(2)	
17		6120342000	連接器	Knee Lifter Crank	(2)	(2)	
18		6120343400	連接桿	Knee Lifter Link	(1)	(1)	
19		ZSG15040	螺絲	Hinge Screw 15/64-28 D=8 L=3.5	(2)	(2)	
20		LG4014-0A	定環	Thrust Collar	(1)	(1)	
21		6120342900	連接器	Rotating Lever	(1)	(1)	
22		EJ7031-0A	彈簧	Spring	(1)	(1)	
23		ZSA16029	螺絲	Screw 1/4-40 L=3.5	(2)	(2)	
24		ZSB15016	螺絲	Screw 15/64-28 L=14	(1)	(1)	
25		ZSD20007	螺絲	Screw 5/16-18 L=16	(2)	(2)	
26		ZSD20007	螺絲	Screw 5/16-18 L=16	(1)	(1)	
27		RE000090	E扣環 5	Retaining Rings-E Type 5	(2)	(2)	
28		ZSA15038	螺絲	Screw 15/64-28 L=28	(2)	(2)	
29		ZSL15002	螺帽	Nut 15/64-28	(2)	(2)	
30		6120343500	腳押聯桿頭	Knee Press Lifter Rod Asm.	1	1	
31		8370912500	檢出器定位銷	Synchronizer Holder Stud	0	1	
32		ZSL15004	螺帽	Nut 15/64-28	0	1	
33		XP600700	油管線	Oil Tube	1	1	
34		EJ7035-0A	腳押曲桿	Knee Lever Rod	1	1	
35		A7037-0A	腳弓大餅	Knee Guird	1	1	
36		A7037-1A	腳弓餅支架	Knee Plate	1	1	
37		A7036-0A	固定支架	Retainer	1	1	
38		ZSD15007	螺絲	Screw 15/64-28 L=14	1	1	
39		6120350200	油防墊片	Packing	(1)	(1)	
40		6120350300	油防墊片	Packing	(1)	(1)	
41		6120350400	油防墊片	Packing	(1)	(1)	
42		6120350500	油防墊片	Packing	(1)	(1)	

M. CS-6120.CS-6120-BT 零件號碼與頁數對照表(1/4)

NUMERICAL PARTS-LIST (1/4)

零件號碼 Part No.	頁數 PAGE	零件號碼 Part No.	頁數 PAGE	零件號碼 Part No.	頁數 PAGE	零件號碼 Part No.	頁數 PAGE
6100143200	13-16	6120140100	9-1	6120148300	13-13		
6100148400	13-15	6120140500	9-11	6120148500	13-19	6120163600	3-5
6120110501	3-8	6120140700	9-2	6120148600	13-18	6120164005	23-10
6120110700	3-3	6120142000	15-9	6120149001	3-40	6120164100	23-12
6120111000	3-6	6120142100	15-1	6120149101	3-34	6120164300	23-5
6120111100	5-1	6120142200	15-2	6120149103	3-33	6120164400	23-13
6120111200	23-41	6120142300	15-4	612014910B	3-35	6120164900	19-6
6120111600	3-15	6120142400	15-3	6120149201	3-36	6120165300	23-42
6120111605	3-14	6120143100	13-14	6120149500	3-37	6120167000	21-2
6120113300	17-10	6120143300	11-5	6120150100	17-1	6120167200	21-4
6120114200	3-19	6120143400	11-6	6120150200	17-2	6120167400	7-37
6120114300	5-3	6120143600	13-7	6120150400	17-4	6120167500	21-7
6120117000	5-9	6120144000	13-20	6120150500	17-6	6120167600	19-34
6120117100	5-10	6120144105	13-22	6120150700	17-13	6120168000	23-27
6120117200	5-11	6120144200	13-21	6120150800	17-11	6120168100	23-29
6120117200	5-12	6120144300	13-23	6120150900	17-12	6120168200	23-30
6120117300	5-13	6120144400	7-33	6120151101	17-14	6120168300	23-31
6120117400	5-14	6120144500	7-35	6120152100	17-8	6120168400	23-32
6120117400	5-15	6120144700	11-4	6120152105	17-7	6120168500	23-33
6120117400	5-16	6120144804	11-1	6120152200	17-9	6120168600	23-34
6120117500	5-19	6120144900	11-2	6120160100	19-8	6120170100	7-36
6120117600	6-18	6120145000	11-3	6120160105	19-7	6120170300	19-23
6120117600	13-40	6120145100	13-1	6120160400	19-1	6120170500	19-25
6120117700	5-17	6120147000	11-7	6120160500	19-5	6120170700	19-26
6120120100	7-1	6120147100	11-8	6120160600	11-14	6120170800	19-28
6120120200	7-3	6120147200	11-10	6120160600	19-2	6120180100	25-1
6120120300	7-4	6120147205	11-9	6120160600	21-3	6120180300	25-3
6120120400	7-6	6120147300	11-12	6120160800	19-3	6120180305	25-2
6120120405	7-5	6120147400	11-13	6120160904	21-1	6120180400	25-5
6120120600	7-2	6120147500	11-16	6120161100	23-1	6120180500	25-6
6120120800	7-8	6120147600	11-17	6120161201	23-22	6120190500	9-17
6120120900	7-12	6120147700	13-5	6120161202	23-43	6120192100	9-19
6120121304	9-22	6120147800	13-6	6120161500	23-3	6120240100	29-8
6120122000	7-9	6120147900	13-8	6120161800	21-13	6120280100	21-20
6120122300	7-11	6120148000	13-9	6120162200	23-4	6120280200	21-21
6120132000	7-26	6120148100	13-10	6120162800	23-2	6120310505	31-1
6120132100	7-27	6120148200	13-11	6120163500	21-15	6120312200	31-9

M. CS-6120,CS-6120-BT 零件號碼與頁數對照表(2/4) NUMERICAL PARTS-LIST (2/4)

零件號碼 Part No.	頁數 PAGE	零件號碼 Part No.	頁數 PAGE	零件號碼 Part No.	頁數 PAGE	零件號碼 Part No.	頁數 PAGE
6120312400	31- 22	6120354600	37- 15	A1162-1A	21- 14	E1077-2A	27- 10
6120312500	31- 21	6120357005	33- 27	A4020-0A	7- 29	E1081-2A	9- 5
6120313400	3- 11	6120358000	33- 3	A4021-0A	25- 7	E1085-2A	9- 8
6120314805	27- 23	6120358004	33- 2	A4037-0A	19- 10	E1087-2A	9- 7
6120335100	37- 1	6120358005	33- 1	A4038-0A	19- 9	E1088-2A	9- 6
6120335200	37- 2	6120358100	33- 4	A4039-0A	19- 11	E1089-2A	9- 4
6120335300	37- 4	6120358200	33- 5	A7000-0A	35- 4	E1158-0A	23- 7
6120335500	37- 3	6120358300	33- 7	A7009-0A	35- 23	E1169-2A	37- 10
6120335700	37- 5	6120358400	33- 8	A7010-0A	35- 6	E1171-2A	23- 6
6120340100	17- 24	6120358500	33- 9	A7010-1A	35- 5	E1172-2A	23- 11
6120340104	17- 23	6120358600	33- 10	A7011-0A	35- 13	E1173-2A	23- 8
6120340400	17- 26	6120358704	33- 11	A7012-0A	35- 22	E1174-2A	23- 9
6120341300	17- 25	6120358905	33- 15	A7012-1A	35- 3	E1235-0A	13- 17
6120341700	37- 16	6120359105	33- 16	A7012-2A	35- 2	E1237-2A	17- 15
6120342000	37- 17	6120359300	33- 19	A7025-0A	35- 12	E1432-1A	15- 5
6120342900	37- 21	6120359400	33- 17	A7036-0A	37- 37	E1433-0A	15- 6
6120343000	17- 29	6120359500	33- 18	A7037-0A	37- 35	E1434-1A	15- 7
6120343400	37- 18	6120914005	35- 16	A7037-1A	37- 36	E1701-2A	23- 24
6120343500	37- 30	6220161300	23- 21	A7040-0A	35- 18	E1702-2A	23- 26
6120344000	17- 27	8110149201	3- 38	C7001-0A	35- 1	E1703-2A	23- 25
6120344100	17- 28	8370912500	37- 31	C7031-0A	33- 24	E4014-0A	25- 8
6120350100	37- 12	8610151800	17- 36	E1020-2A	31- 14	E4015-2A	29- 1
6120350105	37- 11	A1013-0A	5- 8	E1021-0A	31- 7	E4044-0A	7- 13
6120350200	37- 39	A1013-0B	3- 32	E1021-2A	31- 18	E4044-0A	11- 15
6120350300	37- 40	A1013-1A	3- 31	E1025-2A	31- 17	E4044-0A	15- 8
6120350400	37- 41	A1022-0A	31- 6	E1026-0A	31- 3	E4044-0A	19- 4
6120350500	37- 42	A1025-0A	31- 5	E1026-2A	31- 16	E4044-0A	19- 27
6120353100	13- 2	A1042-0A	31- 10	E1027-0A	31- 4	E4085-0A	3- 16
6120353400	33- 21	A1051-0A	31- 23	E1029-0A	31- 2	E4086-0A	5- 2
6120353500	33- 28	A1055-0A	3- 13	E1038-2A	31- 15	E4411-2A	27- 3
6120353900	33- 22	A1071-0A	9- 10	E1052-0A	3- 12	E4412-2A	27- 2
6120354000	33- 20	A1082-0A	9- 9	E1053-0A	3- 7	E4414-2A	23- 35
6120354100	33- 23	A1108-0A	7- 14	E1063-0A	3- 9	E4414-2A	27- 8
6120354200	33- 32	A1109-0A	7- 28	E1064-0A	9- 18	E4415-2A	27- 4
6120354300	33- 33	A1113-0A	7- 38	E1065-1A	9- 16	E4417-2A	27- 6
6120354400	33- 35	A1160-0A	21- 12	E1067-0A	9- 23	E4418-2A	27- 7
6120354500	33- 36	A1162-0A	21- 30	E1074-0A	9- 3	E4419-2A	27- 19

M. CS-6120,CS-6120-BT 零件號碼與頁數對照表(3/4) NUMERICAL PARTS-LIST (3/4)

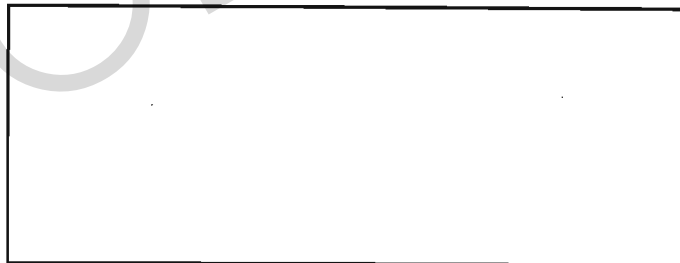
零件號碼 Part No.	頁數 PAGE	零件號碼 Part No.	頁數 PAGE	零件號碼 Part No.	頁數 PAGE	零件號碼 Part No.	頁數 PAGE
E4420-2A	27-21	EJ7026-1A	35-9	TRB12X14	35-29	ZMC04005	27-12
E4421-2A	27-25	EJ7031-0A	37-22	VJ032118	21-23	ZMD06004	35-24
E4454-2A	29-15	EJ7035-0A	37-34	VJ032118	27-11	ZMH04003	3-39
E4455-2A	29-11	F7021-0A	35-10	VJ032121	27-1	ZML05003	27-24
E4456-2A	29-18	F7022-0A	35-11	VW023113	21-22	ZML06004	35-27
E4457-2A	29-16	H1405-0A	17-30	WA049003	5-7	ZMT05001	35-19
E4458-2A	29-9	INDP x 17-22	9-12	WA049003	21-28	ZMT05003	37-7
E4459-2A	29-10	INDP x 17-22	35-14	WA049003	23-37	ZSA09003	29-36
E4460-2A	29-13	J7050-0A	35-17	WA049005	37-9	ZSA11003	31-20
E4461-2A	29-17	LG4014-0A	37-20	WA059002	3-41	ZSA11005	11-18
E4465-2A	29-12	OASCAC0566E	7-7	WA059003	35-20	ZSA11005	11-19
E6016-0A	25-12	OAVCBG1406E0	25-4	WA059003	37-8	ZSA11005	11-25
E6050-0A	3-18	OP00100A	23-17	WA059008	29-41	ZSA11005	15-10
E6051-0A	19-12	OPP00350	33-34	WA060013	23-39	ZSA11005	15-11
E6100-1A	25-17	OPP00500	17-22	WA069001	15-14	ZSA11007	21-9
E6100-2A	25-9	OPP00600	7-25	WA069002	35-26	ZSA11011	25-14
E6105-1A	25-18	OPP00680	21-16	WA069007	3-4	ZSA11016	17-35
E6105-2A	25-10	OPP00680	23-19	WA150006	19-18	ZSA11017	11-21
E6110-2A	29-5	OPP01080	15-17	WA150006	19-32	ZSA11017	11-22
E6111-2A	29-33	OPP01450	31-12	WARN000500	5-5	ZSA15013	19-14
E6112-2A	29-3	OPP02550	3-20	WB031001	13-31	ZSA15017	7-30
E6113-2A	29-7	OPP03550	23-20	WB031001	33-14	ZSA15017	13-28
E6114-2A	29-6	RB200100	11-24	WB060002	35-25	ZSA15020	9-20
E6115-2A	29-2	RB200100	13-26	WH206002	19-22	ZSA15020	19-21
E6117-2A	29-4	RB200150	19-17	XA200055	11-11	ZSA15020	19-29
E6118-2A	29-34	RB200150	19-33	XA200400	13-4	ZSA15020	23-14
E6119-2A	29-35	RB200200	7-10	XA300004	13-12	ZSA15020	25-16
E7006-1B	25-11	RE000040	23-38	XA300080	33-31	ZSA15021	17-19
E7006-1B	35-15	RE000040	27-17	XA300260	33-30	ZSA15021	17-20
EH1371-0A	3-10	RE000060	13-27	XA300340	33-29	ZSA15024	13-25
EJ4041-0A	19-24	RE000090	37-27	XB104002	9-21	ZSA15025	31-13
EJ4108-0A	35-28	RU010100	33-37	XB108005	5-20	ZSA15028	7-16
EJ4109-0A	37-14	RU20UC05	21-26	XP600700	37-33	ZSA15028	17-16
EJ4152-0A	21-5	RU20UC05	27-9	YA050300	3-1	ZSA15037	21-29
EJ4153-0A	21-6	RU20UC-2	21-25	YD030010	33-6	ZSA15038	37-28
EJ4434-2A	3-2	RU20UC-3	23-40	ZMB04002	3-21	ZSA16010	7-20
EJ7026-0A	35-8	TLA020	35-7	ZMB04031	3-22	ZSA16010	7-28

M. CS-6120,CS-6120-BT 零件號碼與頁數對照表(4/4)

NUMERICAL PARTS-LIST (4/4)

零件號碼 Part No.	頁數 PAGE	零件號碼 Part No.	頁數 PAGE	零件號碼 Part No.	頁數 PAGE	零件號碼 Part No.	頁數 PAGE
ZSA16010	11- 26	ZSB11011	29- 39	ZSB15016	37- 24	ZSK18026	15- 18
ZSA16010	15- 16	ZSB11011	35- 21	ZSB15018	3- 30	ZSL11005	29- 25
ZSA16010	19- 16	ZSB11012	3- 27	ZSB15019	21- 17	ZSL12004	29- 28
ZSA16010	19- 31	ZSB11012	19- 20	ZSB15019	33- 26	ZSL15001	27- 15
ZSA16010	21- 10	ZSB11015	13- 36	ZSB15026	7- 15	ZSL15002	13- 33
ZSA16011	7- 19	ZSB11017	13- 35	ZSB15032	11- 20	ZSL15002	37- 29
ZSA16011	7- 24	ZSB11017	19- 35	ZSB15034	27- 13	ZSL15004	29- 32
ZSA16011	7- 31	ZSB11017	23- 36	ZSB15034	29- 27	ZSL15004	37- 32
ZSA16011	7- 32	ZSB11018	21- 11	ZSB18004	7- 18	ZSL16003	15- 15
ZSA16011	25- 13	ZSB11019	29- 23	ZSB18009	7- 17	ZSL18001	15- 19
ZSA16011	29- 29	ZSB11019	33- 25	ZSB20014	37- 13	ZSL18002	13- 39
ZSA16025	7- 21	ZSB11021	3- 25	ZSC08002	29- 21	ZSN09001	29- 37
ZSA16025	7- 22	ZSB11021	5- 6	ZSC09011	29- 38	ZSN11001	31- 19
ZSA16025	7- 34	ZSB11022	17- 18	ZSC11005	29- 22	ZSN16001	31- 8
ZSA16029	29- 30	ZSB11022	27- 26	ZSC11016	3- 24	ZSN32001	17- 5
ZSA16029	37- 23	ZSB11024	9- 14	ZSD15003	21- 19		
ZSB06004	3- 17	ZSB11024	9- 25	ZSD15007	37- 38		
ZSB08001	19- 13	ZSB11024	23- 23	ZSD15008	29- 31		
ZSB08010	9- 15	ZSB11024	23- 28	ZSD20007	37- 25		
ZSB08014	27- 22	ZSB11024	27- 14	ZSD20007	37- 26		
ZSB08016	33- 12	ZSB11024	27- 18	ZSF18001	13- 38		
ZSB08016	33- 13	ZSB11024	29- 20	ZSF32001	17- 3		
ZSB09005	13- 3	ZSB11026	23- 16	ZSG11008	29- 24		
ZSB09011	29- 40	ZSB11026	25- 15	ZSG11009	27- 20		
ZSB09013	31- 11	ZSB11032	21- 24	ZSG12029	17- 32		
ZSB09016	3- 26	ZSB11035	17- 34	ZSG12032	29- 14		
ZSB09016	3- 28	ZSB11078	37- 6	ZSG15040	37- 19		
ZSB09016	3- 29	ZSB11092	25- 19	ZSG15056	13- 32		
ZSB09017	13- 34	ZSB12011	21- 18	ZSG15057	17- 33		
ZSB09017	13- 37	ZSB12012	11- 23	ZSG16002	13- 24		
ZSB09017	17- 21	ZSB12012	19- 19	ZSG16002	13- 29		
ZSB09018	27- 16	ZSB12015	19- 30	ZSG16002	17- 17		
ZSB09019	9- 13	ZSB12017	23- 18	ZSG16005	17- 31		
ZSB09022	13- 30	ZSB15006	23- 15	ZSG16035	13- 41		
ZSB11007	21- 8	ZSB15013	29- 26	ZSH16004	29- 19		
ZSB11010	3- 23	ZSB15014	15- 12	ZSH16005	17- 37		
ZSB11011	5- 4	ZSB15014	15- 13	ZSK09001	9- 24		
ZSB11011	21- 27	ZSB15014	19- 15	ZSK15003	27- 5		

GOLDEN WHEEL



金輪牌 GOLDEN WHEEL
CHEE SIANG INDUSTRIAL CO.,LTD

No.32,Wu Chuan 7th Road, Wu Ku Industrial Area,
Wu Ku Hsiang 24248, Taipei Hsien, Taiwan
Tel:886-2-22999518 Fax:886-2-22999519

No.6120BTH07

※Appear and specification listed in this instruction manual are subjected to change without notice.

※This parts list is edited and printed in accordance with the product specifications as of October 20 2011.10 Printed in Taiwan