

金輪牌工業用縫紉機

GOLDEN WHEEL INDUSTRIAL SEWING MACHINE

零件分解圖

PARTS BOOK

MODEL: CS-8365

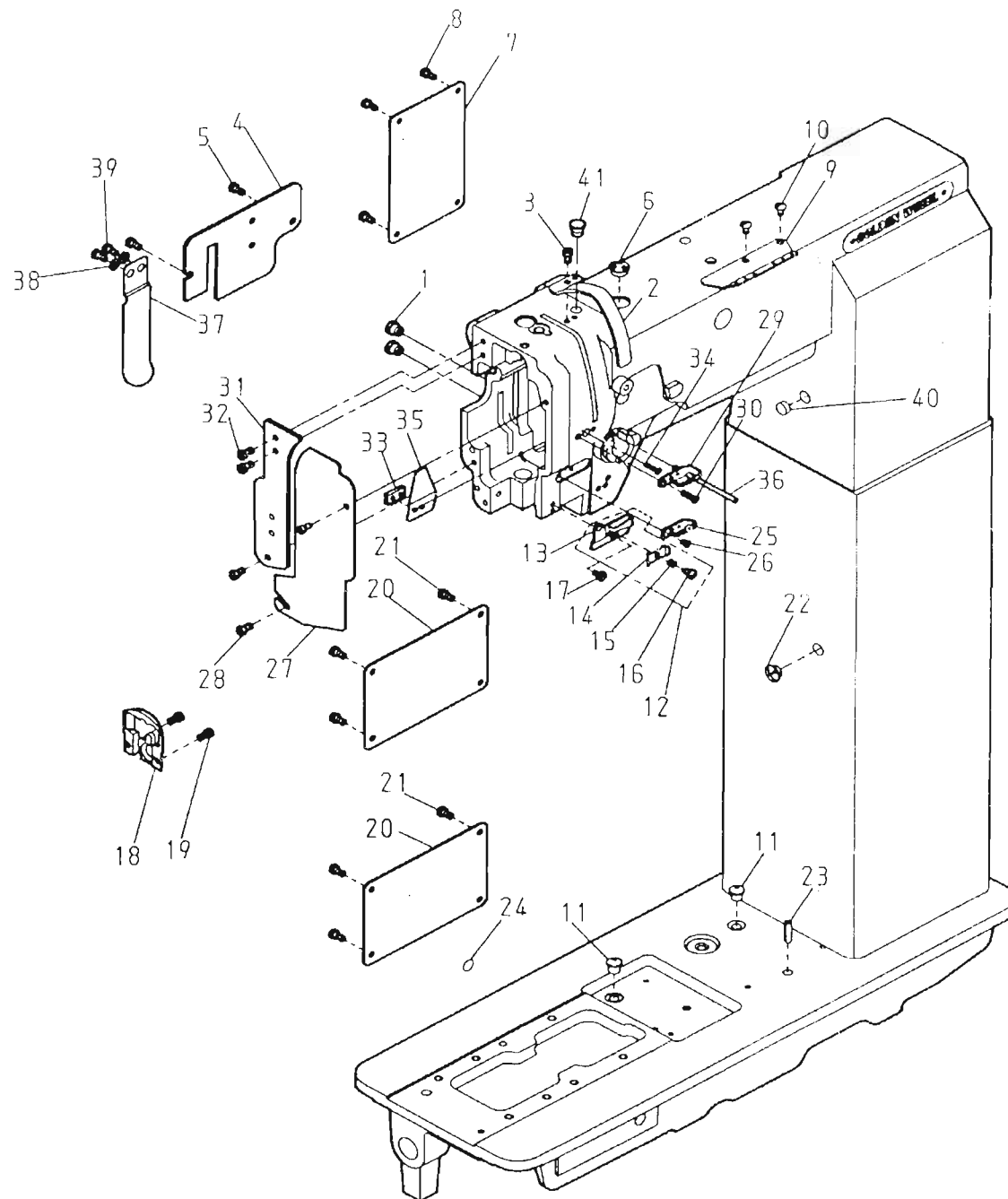
啓翔股份有限公司

CHEE SIANG INDUSTRIAL CO., LTD.

MODEL : CS-8365

目 次	CONTENTS	PAGE
A. 本體關係	FRAME & MISCELLANEOUS COVER COMPONENTS	2-3
B. 上軸關係	MAIN SHAFT COMPONENTS	4-5
C. 針棒・天秤關係	NEEDLE BAR・THREAD TAKE-UP LEVER COMPONENTS	6-7
D. 針棒搖擺關係	NEEDLE BAR ROCKING MOTION MECHANISM COMPONENTS	8-9
E. 上部送料關係	UPPER FEED MECHANISM COMPONENTS	10-11
F. 押腳關係	PRESSURE BAR COMPONENTS	12-13
G. 縫目調整器關係	STITCH REGULATOR MECHANISM COMPONENTS	14-15
H. 下軸・送料關係(1/3)	LOWER SHAFT & FEED MECHANISM COMPONENTS (1/3)	16-17
I. 下軸・送料關係(2/3)	LOWER SHAFT & FEED MECHANISM COMPONENTS (2/3)	18-19
J. 下軸・送料關係(3/3)	LOWER SHAFT & FEED MECHANISM COMPONENTS (3/3)	20-21
K. 釜軸座關係	HOOK SADDLE MECHANISM COMPONENTS	22-23
L. 縫線壓力調整關係	UPPER THREAD TENSION REGULATOR MECHANISM COMPONENTS	24-25
M. 油潤滑關係	OIL LUBRICATION MECHANISM COMPONENTS	26-27
N. 腳弓關係	KNEE LIFTER COMPONENTS	28-29
O. 附件關係	ACCESSORIES	30-31
P. 零件號碼與頁數對照表	NUMERICAL PARTS-LIST	32-34

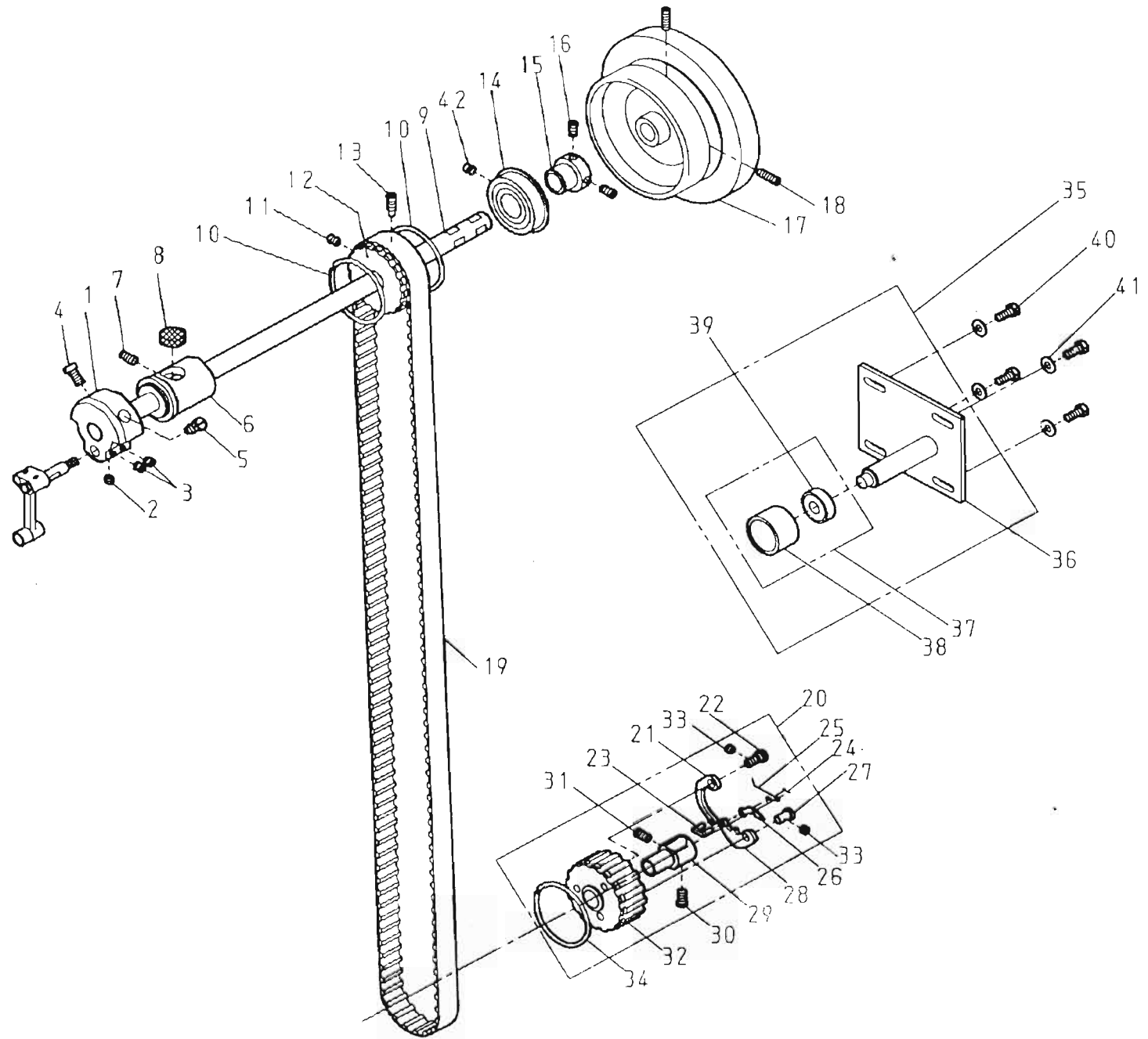
A. CS-8365 本體關係 FRAME & MISCELLANEOUS COVER COMPONENTS



A. CS-8365 本體關係 FRAME & MISCELLANEOUS COVER COMPONENTS

REF.No	NOTE	零件號碼 Part No.	零件名稱	Name of Part	件數 Q'TY	備註 Remarks
1		S1014-0A	橡膠塞	Rubber Plug	2	
2		EJ1063-0A	天秤護蓋	Thread Take-up Cover	1	
3		ZSB11012	螺絲	Screw 11/64-40*8	1	
4		EJ1011-1A	橫蓋	Arm Cover	1	
5		ZSB11012	螺絲	Screw 11/64-40*8	2	
6		A1131-1A	油蓋	Cap	1	
7		EJ1012-0A	側板	Arm Cover	1	
8		ZSB11012	螺絲	Screw 11/64-40*8	4	
9		EJ1051-0A	線掛	Thread Guide	1	
10		ZSB11041	螺絲	Screw 11/64-40*8	2	
11		A1077-0A	油蓋	Cap	2	
12		8370311605	線掛(套)	Thread Guide Asm.	1	
13		EJ1055-0A	線掛	Thread Guide	(1)	
14		EJ1056-0A	壓線具	Guide Plate	(1)	
15		EJ1057-0A	彈簧	Spring	(1)	
16		ZSG08003	螺絲	Screw 1/8-44*6.8	(1)	
17		ZSB09011	螺絲	Screw 9/64-40*6.5	1	
18		8365111300	針板	Throat Plate	1	
19		ZSE11002	螺絲	Screw 11/64-40*8	2	
20		EJ1012-0A	側板	Arm Cover	2	
21		ZSB11012	螺絲	Screw 11/64-40*8	8	
22		S1013-0A	橡膠塞	Rubber Plug	1	
23		YD050018	油管	Oil Pipe	1	
24		WARN000500	印記	Grand Mark	1	
25		C1054-0A	線掛	Thread Guide	1	
26		ZSC09009	螺絲	Screw 9/64-40*6.5	1	
27		EJ1010-1A	面板	Face Plate	1	
28		ZSB11012	螺絲	Screw 11/64-40*8	2	
29		C1052-0A	線掛	Thread Guide	1	
30		ZSC09021	螺絲	Screw 3/16-28*11	1	
31		EJ1010-0A	面板	Guide mounting Plate	1	
32		ZSB11012	螺絲	Screw 11/64-40*8	3	
33		EJ1017-0A	螺帽板	Spaser	1	
34		ZSC09021	螺絲	Screw 3/16-28*11	1	
35		EJ1014-0A	油防板	Oil Guard Plate	1	
36		EJ1043-0A	線銷	Tension releasing Pin	1	
37		EJ1011-0A	防塵蓋	Cover	1	
38		WAD49003	平墊圈	Washer 4.5	2	
39		ZSB11012	螺絲	Screw 11/64-40*8	2	
40		C1141-0A	橡膠塞	Rubber Plug	1	
41		6120117400	橡膠塞	Rubber Plug	1	

B. CS-8365 上轴总成 MAIN SHAFT COMPONENTS



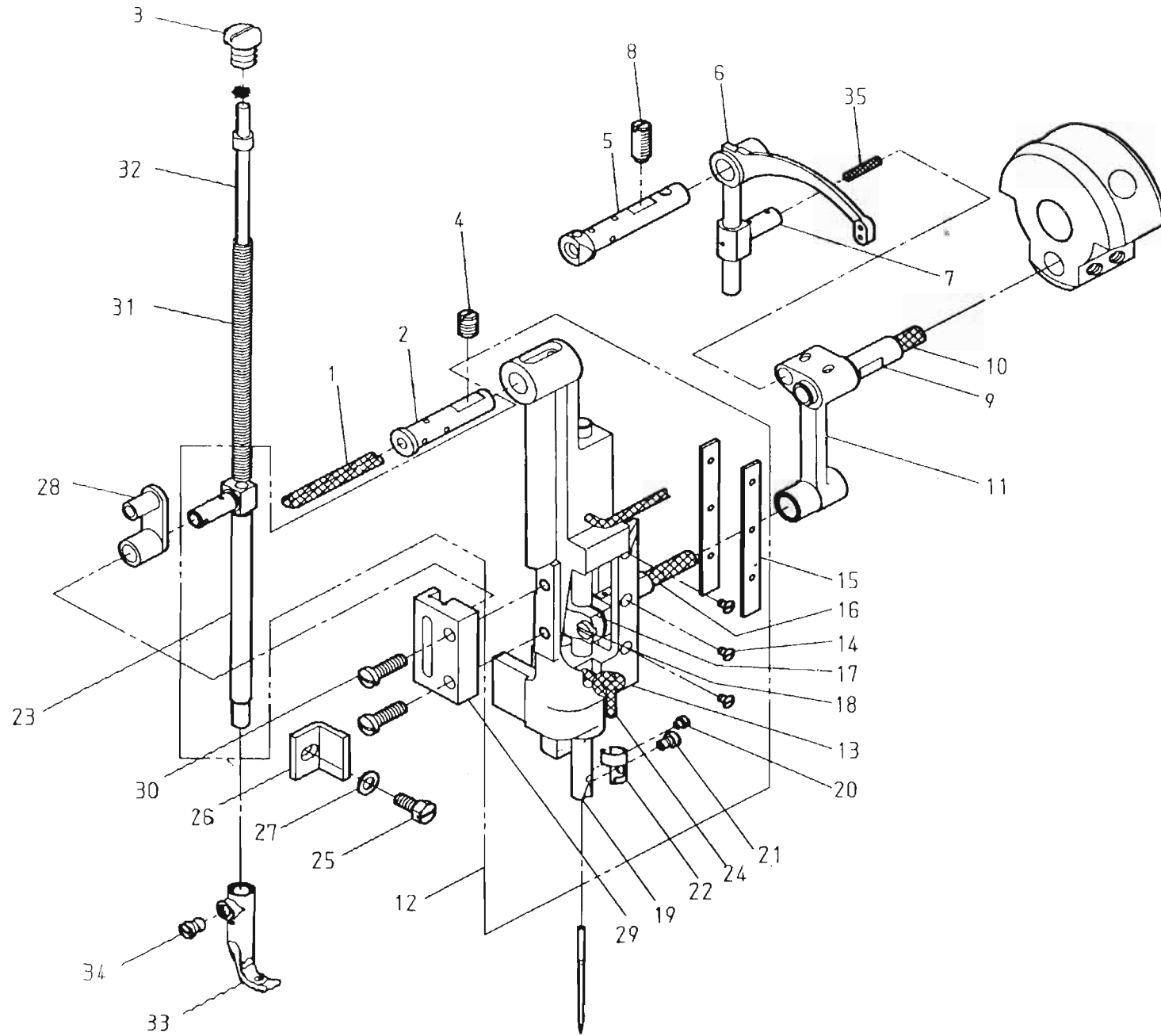
B. CS-8365 上軸關係 MAIN SHAFT COMPONENTS

REF.No	NOTE	零件號碼 Part No.	零件名稱	Name of Part	件數 Q'TY	備註 Remarks
1		8370120800	凸輪	Crank	1	
2		ZSA15019	螺絲	Screw 15/64-28*3	1	
3		ZSA15017	螺絲	Screw 15/64-28*8.5	2	
4		ZSB18002	螺絲	Screw 9/32-28*13	1	
5		ZSB18001	螺絲	Screw 9/32-28*9.5	1	
6		EJ1101-0A	上軸套筒(前)	Arm Shaft Bushing (Left Front-side)	1	
7		ZSA16034	螺絲	Screw 1/4-24*13	1	
8		XB118001	油綿	Felt	1	
9		8370120100	上軸	Arm Shaft	1	
10		B1321-0A	齒輪邊環	Spring Flange	2	
11		ZSB15006	螺絲	Screw 15/64-28*8.5	1	
12		EJ1320-0B	齒形皮帶輪(上)	Belt Pully (Upper)	1	
13		ZSB15041	螺絲	Screw 15/64-28*9	1	
14		BB6204ZZNR	滾珠軸承	Ball Bearing	1	
15		EJ1103-0A	套管	Bushing	1	
16		ZSB15006	螺絲	Screw 15/64-28*8.5	2	
17		8370122300	皮帶輪	Balanse Wheel	1	
18		ZSB15026	螺絲	Screw 15/64-28*18	2	
19		8370131000	齒形皮帶	Cog belt	1	
20		EJ1323-0A	齒形皮帶輪(套)	Belt Pully Asm.(Lower)	1	
21		EJ4138-0A	彈片壓板	Spring plate	(1)	
22		EJ4137-0A	偏心固定鎖	Pin ϕ 6*14.5	(1)	
23		EJ4134-0A	連接桿	Link	(1)	
24		YC010010	開口銷	Split Pin 1*10	(1)	
25		EJ4132-0A	離合器彈簧	Twist Spring	(1)	
26		B4135-0A	離合器棘	Plate	(1)	
27		B4131-0A	固定銷	Pin ϕ 6.35*13	(1)	
28		EJ4133-0A	離合器棘	Plate	(1)	
29		EJ4136-0A	套管	Bushing	(1)	
30		ZSB15004	螺絲	Screw 15/64-28*10.5	(1)	
31		ZSB15006	螺絲	Screw 15/64-28*8.5	(1)	
32		EJ4130-0D	齒形皮帶輪	Belt pully (Lower)	(1)	
33		ZSA15021	螺絲	Screw 15/64-28*4.5	(2)	
34		B1321-0A	齒輪邊環	Spring Flange	(1)	
35		8370131505	惰輪座(套)	Idler Base Asm.	1	
36		8370131504	惰輪座(結合)	Idler Base Com.	(1)	
37		8370131704	惰輪(結合)	Idler Com.	(1)	
38		8370131700	惰輪	Idler	(1)	
39		BB6000ZZ	滾珠軸承	Ball Bearing	(1)	
40		ZSD15007	螺絲	Screw 15/64-28*14	4	
41		W1069001	平墊圈	Washer 6	4	
42		ZSA16033	螺絲	Screw 1/4-24*7.5	1	

C. CS-8365

針桿・天秤關係

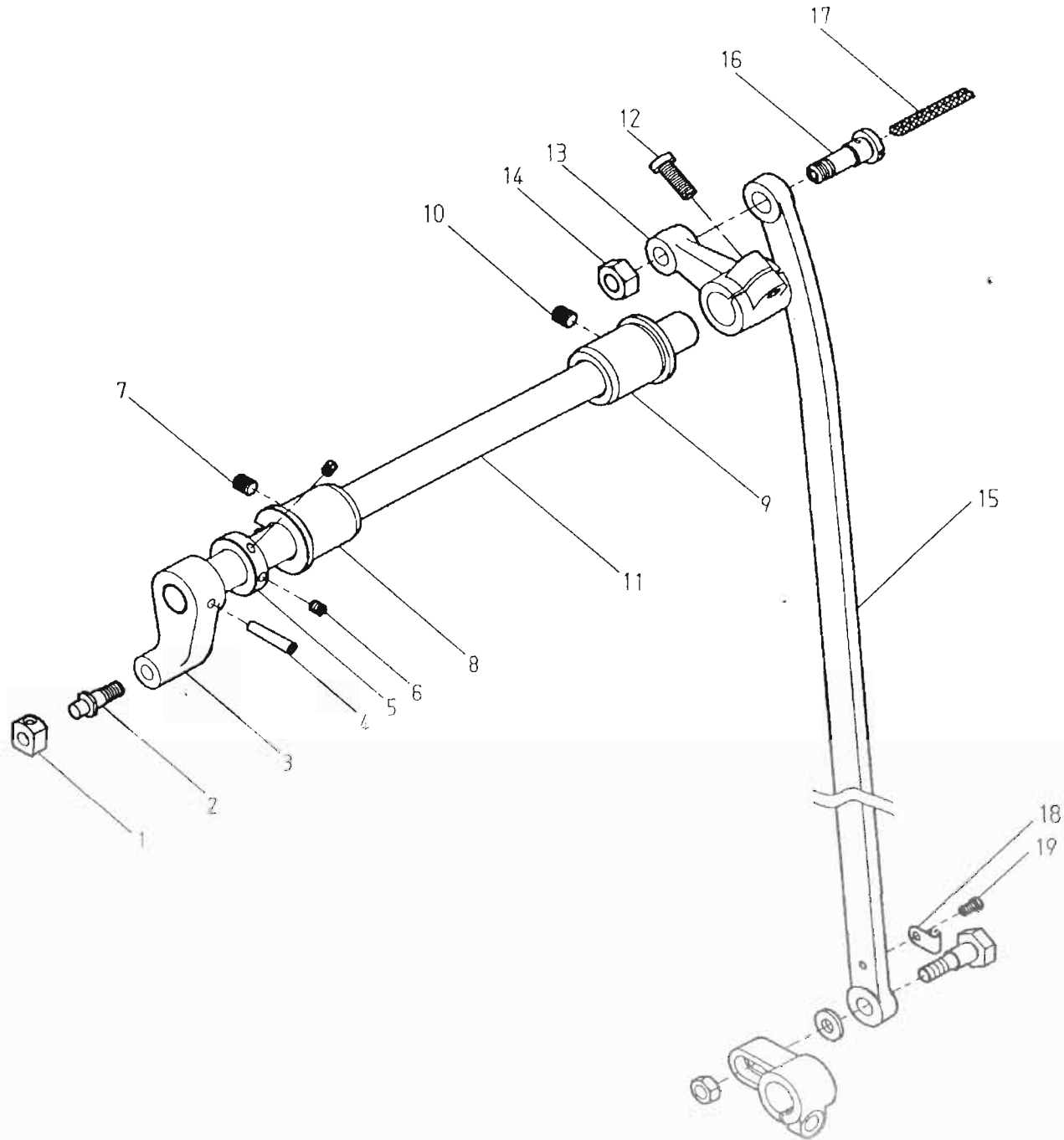
NEEDLE BAR・THREAD TAKE-UP LEVER COMPONENTS



C. CS-8365 針棒-天秤關係 NEEDLE BAR · TREAD TAKE-UP LEVER COMPONENTS

REF.No	NOTE	零件號碼 Part No.	零件名稱	Name of Part	件數 Q'TY	備註 Remarks
1		XA300080	油線	Oil Wick ϕ 2.5*80	1	
2		EJ1091-0A	針柱座固定軸	Needle Bar Guide Bracket Stud	1	
3		ZSB20009	螺絲	Screw 5/16-28*10	1	
4		ZSA15017	螺絲	Screw 15/64-28*8.5	1	
5		C1061-0A	天秤固定銷	Thread Take-up Lever Support Stud	1	
6		4400190100	天秤	Thread Take-up Lever	1	
7		A1062-0A	天秤滑塊	Thread Take-up Slide Brock	1	
8		ZSA15010	螺絲	Screw 15/64-28*8.5	1	
9		A1107-0A	凸輪固定銷	Needle Bar Crank Pin	1	
10		XA300065	油線	Oil Wick ϕ 3.0*65	1	
11		EJ1080-0A	連接桿	Connecting Link	1	
12		8370270105	針柱台(套)	Needle Bar Guide Bracket Asm.	1	
13		EJ1090-0A	針柱台	Needle Bar Guide Bracket	(1)	
14		ZSC06005	螺絲	Screw 3/32-56*4	(6)	
15		EJ1081-0A	針棒連結器滑板	Spacer	(2)	
16		XA300040	油線	Felt	(1)	
17		EJ1074-0A	針棒固定軸	Needle Bar Holder	(1)	
18		ZSB09032	螺絲	Screw 9/64-40*8.5	(1)	
19		EJ1070-0A	針棒	Needle Bar	(1)	
20		ZSB06002	螺絲	Screw 3/32-56*3	(1)	
21		ZSB08002	螺絲	Screw 1/8-44*3	(1)	
22		F1076-0A	線掛	Needle Bar Thread Guide	(1)	
23		EJ1282-0A	中腳押棒	Vibrating Presser Bar	(1)	
24		XA300200	油線	Oil Wick ϕ 2.5*200	(1)	
25		ZSD11001	螺絲	Screw 11/64-40*10	1	
26		EJ1092-0A	針柱座定位板	Needle Bar Guide	1	
27		WA059002	平整圈	Washer 5	1	
28		B1283-0A	押腳舉升連桿	Vibrating Presser Bar Link	1	
29		8370143700	押腳舉升連桿案内	Vibrating Presser Bar Guide	1	
30		ZSB11010	螺絲	Screw 11/64-40*15	2	
31		EJ1281-0A	彈簧	Spring	1	
32		EJ1280-0A	彈簧導桿	Vibrating Presser Spring Guide	1	
33		8370151000	內壓腳	Walking Foot	1	
34		ZSB11009	螺絲	Screw 11/64-40*5	1	
35		XA300027	油線	Oil Wick ϕ 3*27	1	

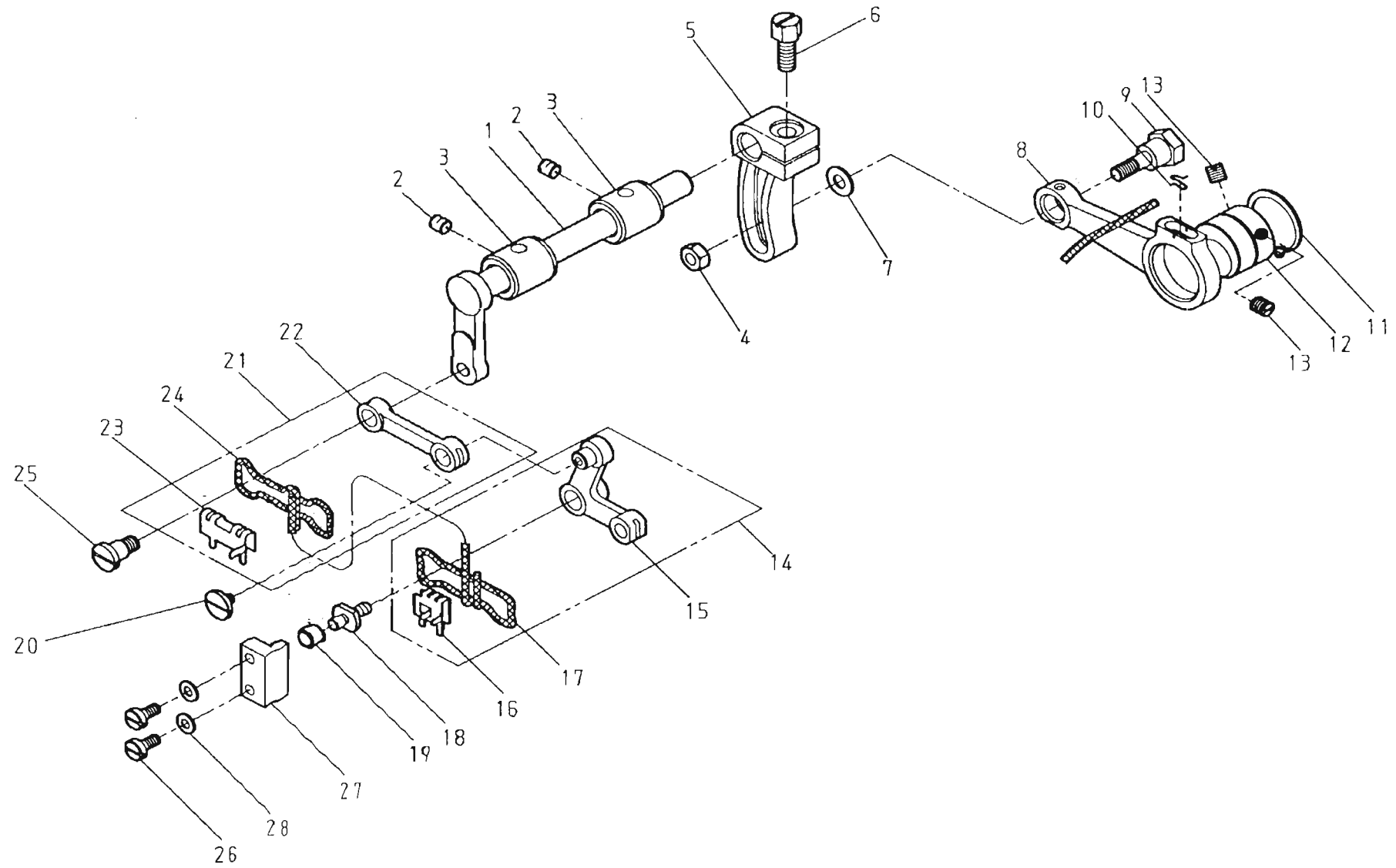
D. CS-8365 針棒搖擺關係 NEEDLE BAR ROCKING MOTION MECHANISM COMPONENTS



D. CS-8365 針棒搖擺關係 NEEDLE BAR ROCKING MOTION MECHANISM COMPONENTS

REF.No	NOTE	零件號碼 Part No.	零件名稱	Name of Part	件數 Q'TY	備註 Remarks
1		EJ1334-0A	角駒	Square Block	1	
2		EJ1333-0A	角駒軸	Crank Pin	1	
3		EJ1332-0A	擺動臂	Needle Bar Vibrating Crank (Left)	1	
4		YB040025	推拔銷	Taper Pin $\phi 4*25*1/5$	1	
5		EJ1344-0A	定環	Coller	1	
6		ZSA11005	螺絲	Screw 11/64-40*5.5	2	
7		ZSA16033	螺絲	Screw 1/4-24*8	1	
8		EJ1341-0A	擺動臂軸套管	Needle Bar Vibrating Shaft Bushing (Front)	1	
9		EJ1343-0A	擺動臂軸套管	Needle Bar Vibrating Shaft Bushing (Rear)	1	
10		ZSA16033	螺絲	Screw 1/4-24*8	1	
11		EJ1331-0A	擺動臂軸	Needle Bar Vibrating Shaft	1	
12		ZSB16004	螺絲	Screw 1/4-24*16	1	
13		8370271000	擺動臂	Needle Bar Vibrating Crank (Right)	1	
14		ZSL20004	螺帽	Nut 5/16-24	1	
15		8370271100	連接桿	Connecting Rod	1	
16		EJ1337-0A	螺絲	Hinge Screw	1	
17		XA300085	油線	Oil Wick $\phi 2.5*85$	1	
18		C1375-2A	油線支持片	Holder	1	
19		ZSB09018	螺絲	Screw 9/64-40*6.5	1	

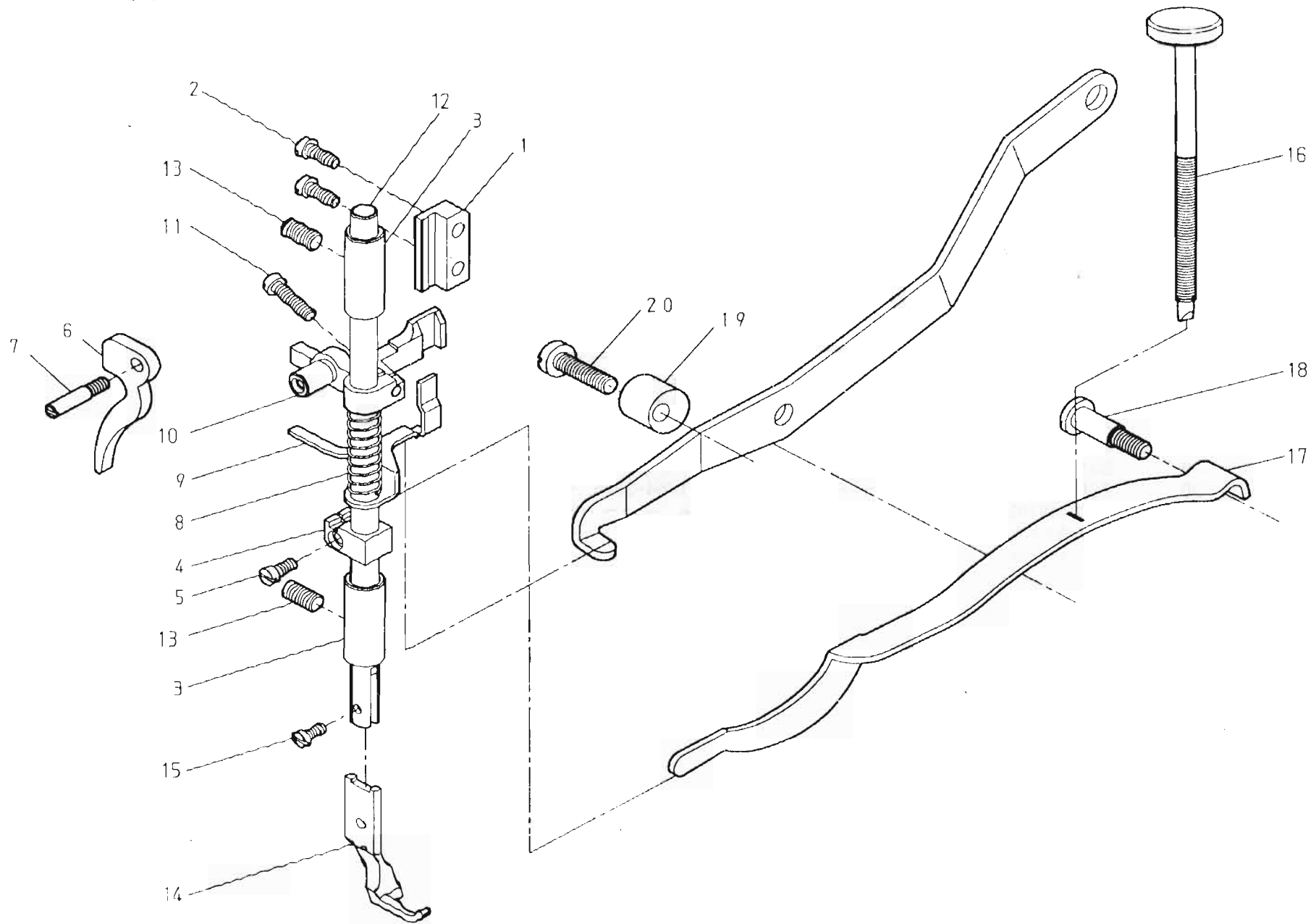
E. CS-8365 上部送料關係 UPPER FEED MECHANISM COMPONENTS



E. CS-8365 上部送料關係 UPPER FEED MECHANISM COMPONENTS

REF.No	NOTE	零件號碼	零件名稱	Name of Part	件數	備註
		Part No.			Q'TY	Remarks
1		EJ1290-0A	作動軸	Feed Lifting Rock Shaft	1	
2		ZSA15028	螺絲	Screw 1/4-24*8	2	
3		E1291-0A	套管	Bushing	2	
4		ZML06001	螺帽	Nut M6*0.75	1	
5		EJ1295-0A	舉升曲柄連桿	Lever (Light)	1	
6		ZSD16007	螺絲	Screw 1/4-24*16.5	1	
7		WA069011	平墊圈	Washer 6	1	
8		E1297-0A	連接桿	Connecting Rod	1	
9		ZMG06003	螺絲	Hinge Screw	1	
10		A1130-0A	彈簧	Spring	1	
11		RB200250	軸用C扣環 25	Retaining Rings-C Type 25	1	
12		E1298-0A	偏心輪	Eccentric	1	
13		ZSH16001	螺絲	Screw 1/4-40*6	2	
14		8370143605	舉升支臂連桿 (套)	Bell Crank Asm.	1	
15		EJ1286-0A	舉升支臂連桿	Bell Crank	(1)	
16		8370353200	油線掛架	Holder	(1)	
17		XA300140	油線	Oil Wick	(1)	
18		EJ1283-0A	舉升連桿支軸	Support Shaft	1	
19		EJ1284-0A	舉升曲臂案内珠	Roller	1	
20		ZSB11069	螺絲	Screw 11/64-32*6	1	
21		8370145105	連接桿 (套)	Link Asm.	1	
22		EJ1287-0A	連接桿 (左)	Link (Left)	(1)	
23		8370353100	油線掛架	Holder	(1)	
24		XA300130	油線	Oil Wick	(1)	
25		ZSG16018	螺絲	Hinge Screw	1	
26		ZSB11026	螺絲	Screw 11/64-40*10	2	
27		EJ1278-0A	案内板	Bell Crank Guide	1	
28		WA049006	平墊圈	Washer 5	2	

F. CS-8365 押脚関係 PRESSURE BAR COMPONENTS



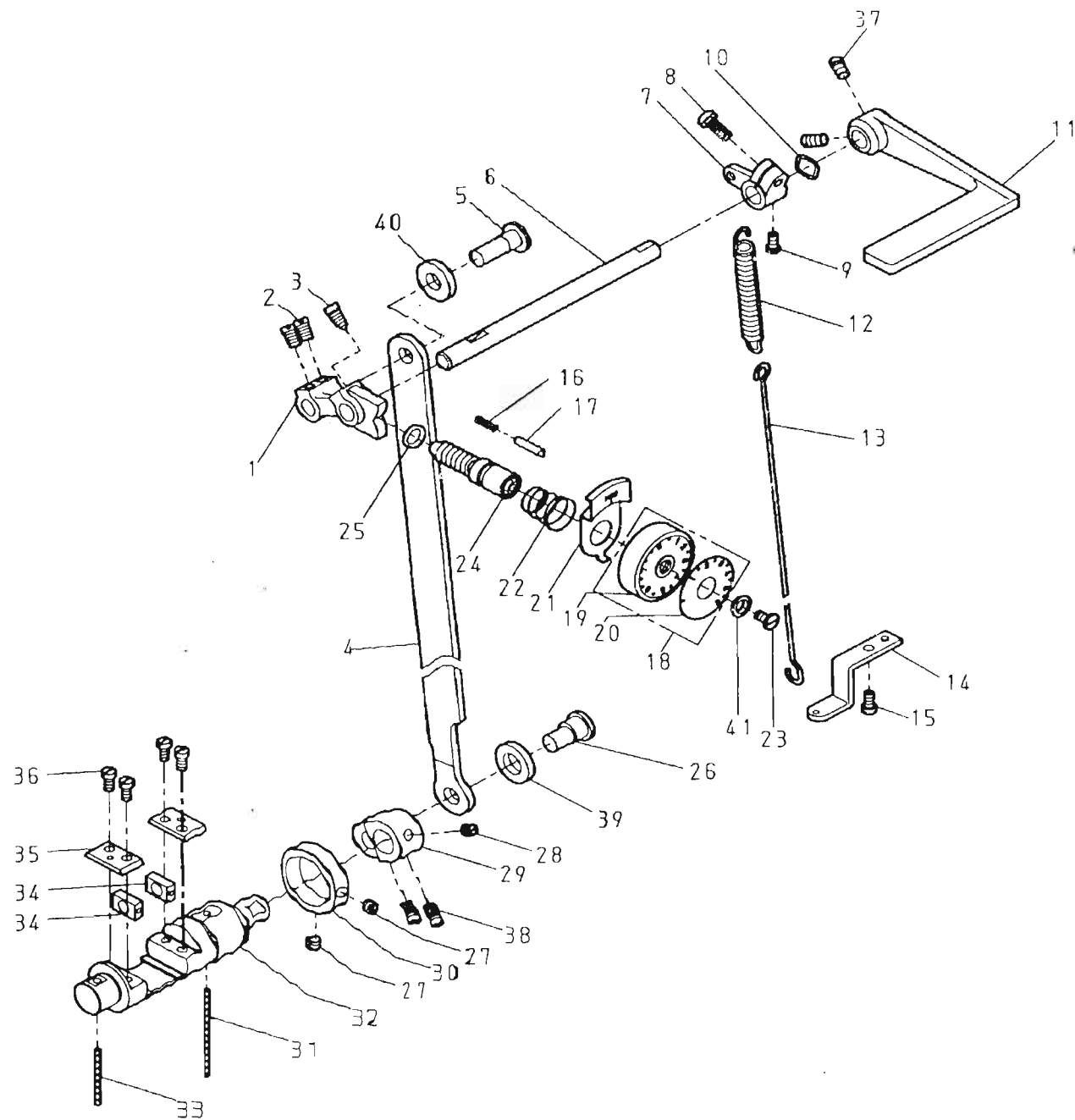
F. CS-8365 押脚關係 PRESSURE BAR COMPONENTS

REF.No	NOTE	零件號碼 Part No.	零件名稱	Name of Part	件數 QTY	備註 Remarks
1		EJ1208-0A	押棒上升架案内板	Guide	1	
2		ZSB11017	螺絲	Screw 11/64-40*12	2	
3		C1183-0A	押棒套管	Bushing	2	
4		B1275-0A	押棒彈簧架	Spring Bracket	1	
5		ZSB10002	螺絲	Screw 9/64-40*8.5	1	
6		EJ1200-0A	押棒提升把手	Pressure Bar Lifter	1	
7		ZSK11036	螺絲	Screw 3/16-28*24.5	1	
8		B1274-0A	彈簧	Spring	1	
9		EJ1273-0A	壓縮滑座	Thread Releasing Plate	1	
10		EJ1272-0A	押棒上升器	Bracket	1	
11		ZSB11083	螺絲	Screw 11/64-40*15	1	
12		EJ1180-0A	押棒	Presser Bar	1	
13		ZSA16034	螺絲	Screw 1/4-24*13	2	
14		8370153000	外壓脚	Presser Foot	1	
15		ZSB09028	螺絲	Screw 9/64-40*11	1	
16		ZSK16017	螺絲	Screw 1/4-40*104	1	
17		EJ1300-0A	板彈簧	Lever Spring	1	
18		ZSG16003	螺絲	Hinge Screw	1	
19		8370341100	固定銷	Stopper	1	
20		ZSB16011	螺絲	Screw 1/4-24*25	1	

Đổi mã EJ1273-1A ←

Đổi mã EJ1272-1A

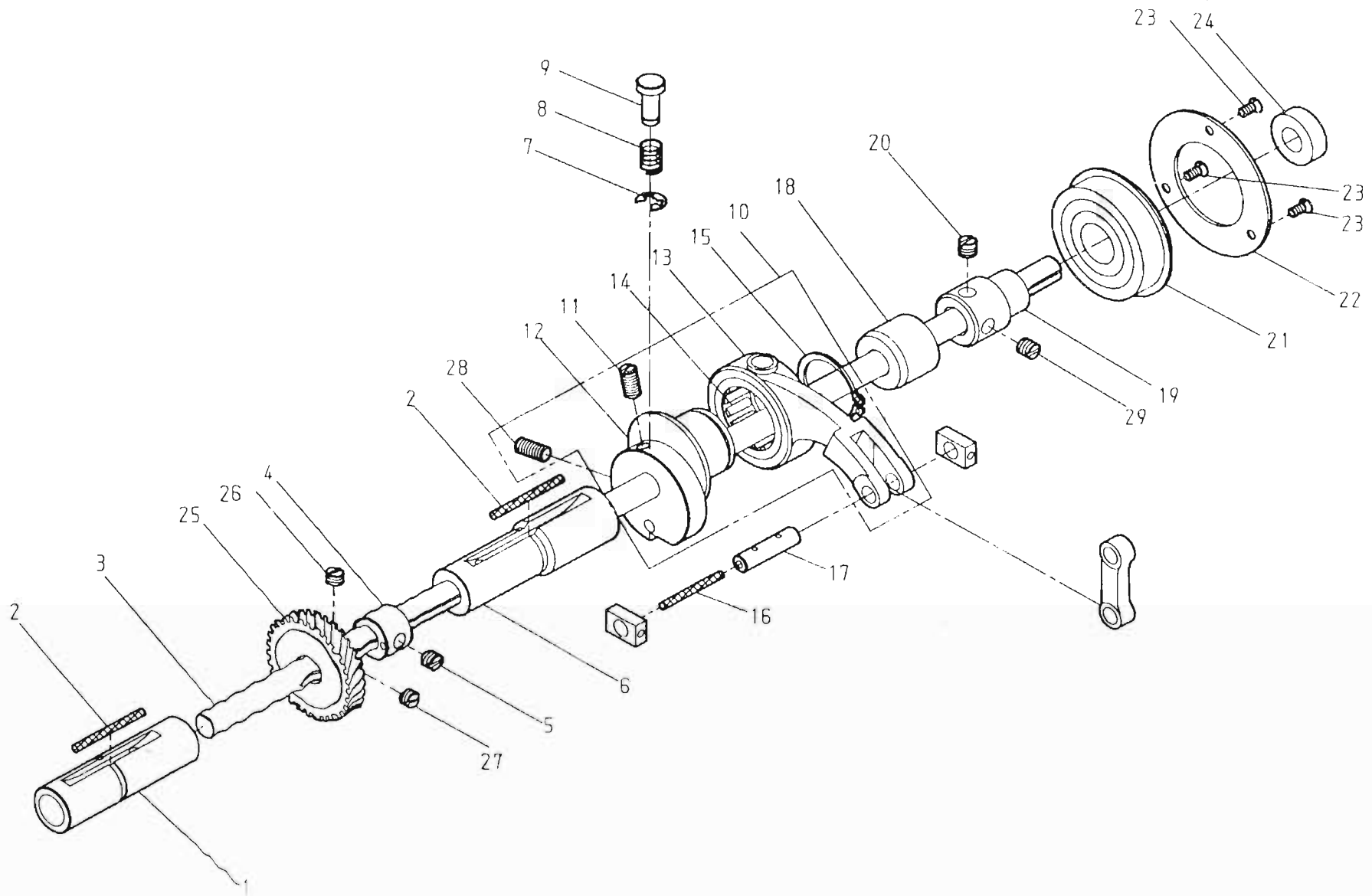
G. CS-8365 縫目調整器關係 STITCH REGULATOR MECHANISM COMPONENTS



G. CS-8365 縫目調整器關係 STITCH REGULATOR MECHANISM COMPONENTS

REF.No	NOTE	零件號碼	零件名稱	Name of Part	件數	備註
		Part No.			Q'TY	Remarks
1		EJ1150-0A	三叉	Feed Regulator Cam	1	
2		ZSB15006	螺絲	Screw 15/64-28*8.5	2	
3		ZSB15037	螺絲	Screw 15/64-28*12	1	
4		8370165100	連接桿	Link	1	
5		EJ4157-0A	倒縫連結軸	Pin	1	
6		EJ1161-0A	倒縫軸	Reverse Stitch Shaft	1	
7		EJ1163-0A	倒縫軸腕	Arm	1	
8		ZSB15009	螺絲	Screw 15/64-28*13	1	
9		ZSB11014	螺絲	Screw 11/64-40*8.5	1	
10		WG000010	彈簧墊圈	Spring Washer 10	1	
11		EJ1160-0A	倒縫桿	Reverse Sewing Lever	1	
12		EJ1166-0A	彈簧	Spring	1	
13		8370166000	彈簧掛	Spring Hook	1	
14		EJ4115-0A	支持板	Guide Plate	1	
15		ZSB11011	螺絲	Screw 11/64-40*8	1	
16		E1158-0A	彈簧	Spring	1	
17		E1171-2A	定位銷	Pin	1	
18		8370164005	刻度盤(套)	Dial Asm.	1	
19		E1172-2A	刻度盤	Dial	(1)	
20		4400164100	刻度板	Feed Scale Plate	(1)	
21		E1173-2A	操作板	Stoper Pin Releasing Lever	1	
22		E1174-2A	彈簧	Spring	1	
23		ZSB12017	螺絲	Screw 3/16-28*15	1	
24		EJ1170-0A	方牙棒	Feed Regulating Screw	1	
25		OP00100A	O形環 10	O-ring ϕ 10	1	
26		EJ1155-0A	連結軸	Eccentric Shaft	1	
27		ZSA15025	螺絲	Screw 15/64-28*6	2	
28		ZSA15025	螺絲	Screw 15/64-28*6	1	
29		EJ4156-0A	倒縫軸連結腕	Reverse Sewing Crank	1	
30		EJ4154-0A	固定環	Collar	1	
31		XA300055	油線	Oil Wick ϕ 3*55	1	
32		8370167000	倒退固定軸	Reverse Block	1	
33		XA300035	油線	Oil Wick ϕ 3*35	1	
34		EJ4152-0A	滑駒	Square Block	2	
35		EJ4153-0A	滑塊固定板	Guide Plate	2	
36		ZSB11028	螺絲	Screw 11/64-40*10	4	
37		ZSB15006	螺絲	Screw 15/64-28*8.5	2	
38		ZSB15006	螺絲	Screw 15/64-28*8.5	2	
39		WH212004	墊圈	Spacer	1	
40		WH209003	墊圈	Spacer	1	
41		CI1174-0A	墊片	Guide	1	

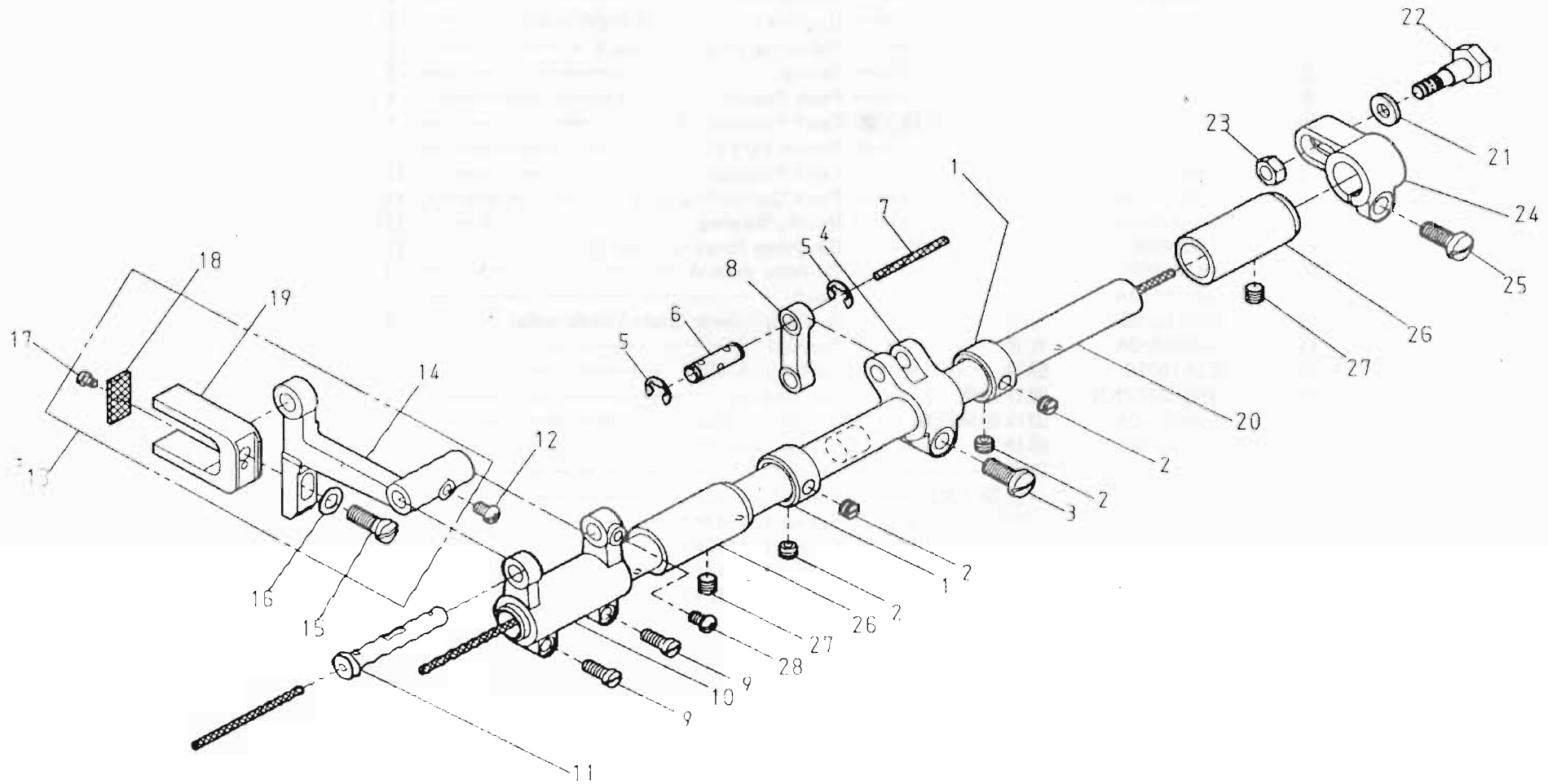
H. CS-8365 下軸・送料関係 LOWER SHAFT & FEED MECHANISM COMPONENTS (1/3)



H. CS-8365 下軸・送料關係 LOWER SHAFT & FEED MECHANISM COMPONENTS (1/3)

REF.No	NOTE	零件號碼 Part No.	零件名稱	Name of Part	件數 Q'TY	備註 Remarks
1		8370160600	套管	Bushing (Lower Shaft Left-side)	1	
2		XB304001	油線	Oil Wick	2	
3		8370180100	下軸	Lower Shaft	1	
4		C4015-0A	送料土台凸輪	Feed Eccentric Cam	1	
5		ZSA16021	螺絲	Screw 1/4-40*5	1	
6		EJ4012-0A	套管	Bushing (Lower Shaft Right-side)	1	
7		RE000050	E扣環 5	Retaining Rings-E Type 5	1	
8		EJ4121-0A	彈簧	Spring	1	
9		EJ4120-0A	銷	Push Button	1	
10		8370160905	下軸連桿・凸輪(套)	Feed Regulator Asm.	1	
11		ZSH15002	螺絲	Screw 15/64-28	(1)	
12		EJ4016-0A	下軸凸輪	Feed Eccentric	(1)	
13		EJ4017-0A	下軸連桿	Feed Connecting Rod	(1)	
14		BNTA2616Z	軸承	Needle Bearing	(1)	
15		RB200260	軸用C扣環 26	Retaining Rings-C Type 26	(1)	
16		XA300030	油線	Oil Wick φ3*30	1	
17		EJ4151-0A	滑駒鎖	Shaft	1	
18		8370180300	套管	Bushing (Lower Shaft Middle-side)	1	
19		EJ4060-0A	套管	Bushing	1	
20		ZSA16025	螺絲	Screw 1/4-40*4	1	
21		BB6203ZZNR	滾珠軸承	Ball Bearing	1	
22		EJ4061-0A	滾珠軸承壓板	Bearing Holder	1	
23		ZSC09006	螺絲	Screw 9/64-40*7	3	
24		WA100013	墊圈	Spacer	1	
25		C4026-0A	斜齒輪(大)	Spiral Gear (Large)	1	
26		ZSA16010	螺絲	Screw 1/4-40*4	2	
27		ZSA16020	螺絲	Screw 1/4-40*5.5	1	
28		ZSH15006	螺絲	Screw 15/64-28	(1)	
29		ZSA16007	螺絲	Screw 1/4-40*6	1	

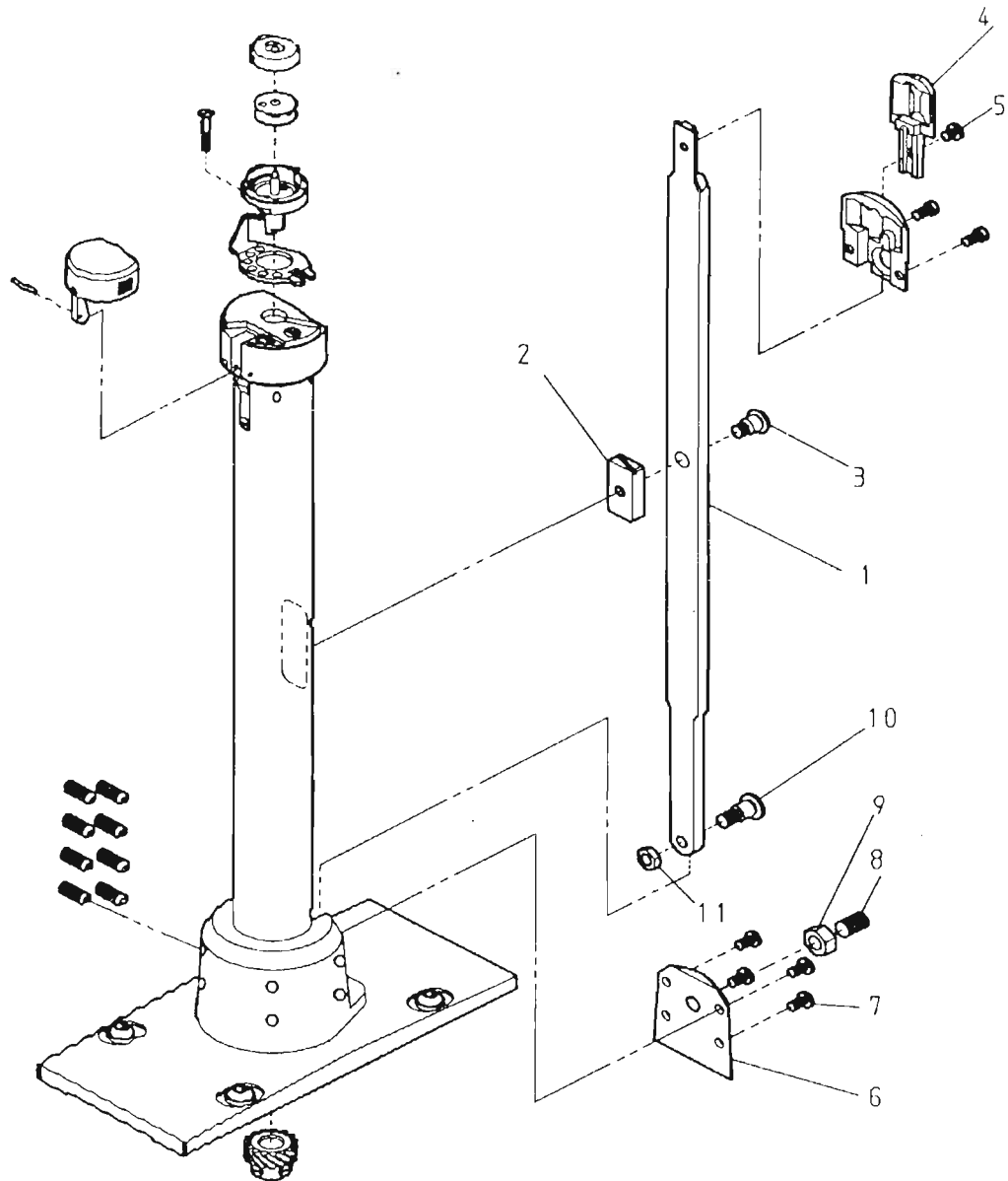
I. CS-8365 下轴·送料机构 LOWER SHAFT & FEED MECHANISM COMPONENTS (2/3)



I. CS-8365 下軸・送料關係 LOWER SHAFT & FEED MECHANISM COMPONENTS (2/3)

REF.No	NOTE	零件號碼 Part No.	零件名稱 Name of Part	件數 Q'TY	備註 Remarks
1		EJ4044-0A	固定環 ----- Collar -----	2	
2		ZSA16010	螺絲 ----- Screw 1/4-40*4 -----	4	
3		ZSB16004	螺絲 ----- Screw 1/4-24*16 -----	1	
4		EJ4048-0A	針送料桿 ----- Feed Connection Crank (Middle) -----	1	
5		REC00060	E扣環 6 ----- Retaining Rings-E Type 6 -----	2	
6		EJ4047-0A	連接板鎖 ----- Shaft -----	1	
7		XA300030	油線 ----- Oil Wick ϕ 3*30 -----	1	
8		EJ4018-0A	連接桿 ----- Link -----	1	
9		ZSB12015	螺絲 ----- Screw 3/16-28*12 -----	2	
10		EJ4045-1A	水平送齒腕 ----- Feed Connection Crank (Left) -----	1	
11		EJ4051-2A	送料土台軸 ----- Feed Bar Shaft -----	1	
12		ZSB11029	螺絲 ----- Screw 11/64-40*7 -----	1	
13		8370160105	送料土台(套) --- Feed Bar Asm. -----	1	
14		8370160100	送料土台 ----- Feed Bar -----	(1)	
15		ZSD15002	螺絲 ----- Screw 15/64-28*15.5 -----	(1)	
16		WA069003	平墊圈 ----- Washer 6 -----	(1)	
17		ZSB08010	螺絲 ----- Screw 1/8-44*4 -----	(1)	
18		XB312002	油綿 ----- Felt -----	(1)	
19		EJ4055-0A	送料土台二又 --- Feed Bar Forked Connection -----	(1)	
20		EJ4040-0A	水平伝動軸 --- Feed Rock Shaft -----	1	
21		WH206001	平墊圈 ----- Washer 6 -----	1	
22		ZMG06013	螺絲 ----- Hinge Screw -----	1	
23		ZML06005	螺帽 ----- Nut M6 * 0.75 -----	1	
24		EJ4046-0A	針送料桿 ----- Feed Connection Crank (Right) -----	1	
25		ZSB16004	螺絲 ----- Screw 1/4-24*16 -----	1	
26		EJ4041-0A	套筒 ----- Bushing -----	2	
27		ZSA16034	螺絲 ----- Screw 1/4-24*14 -----	2	
28		ZSB11029	螺絲 ----- Screw 11/64-40*7 -----	1	

J. CS-8365 下轴·送料机构 LOWER SHAFT & FEED MECHANISM COMPONENTS (3/3)

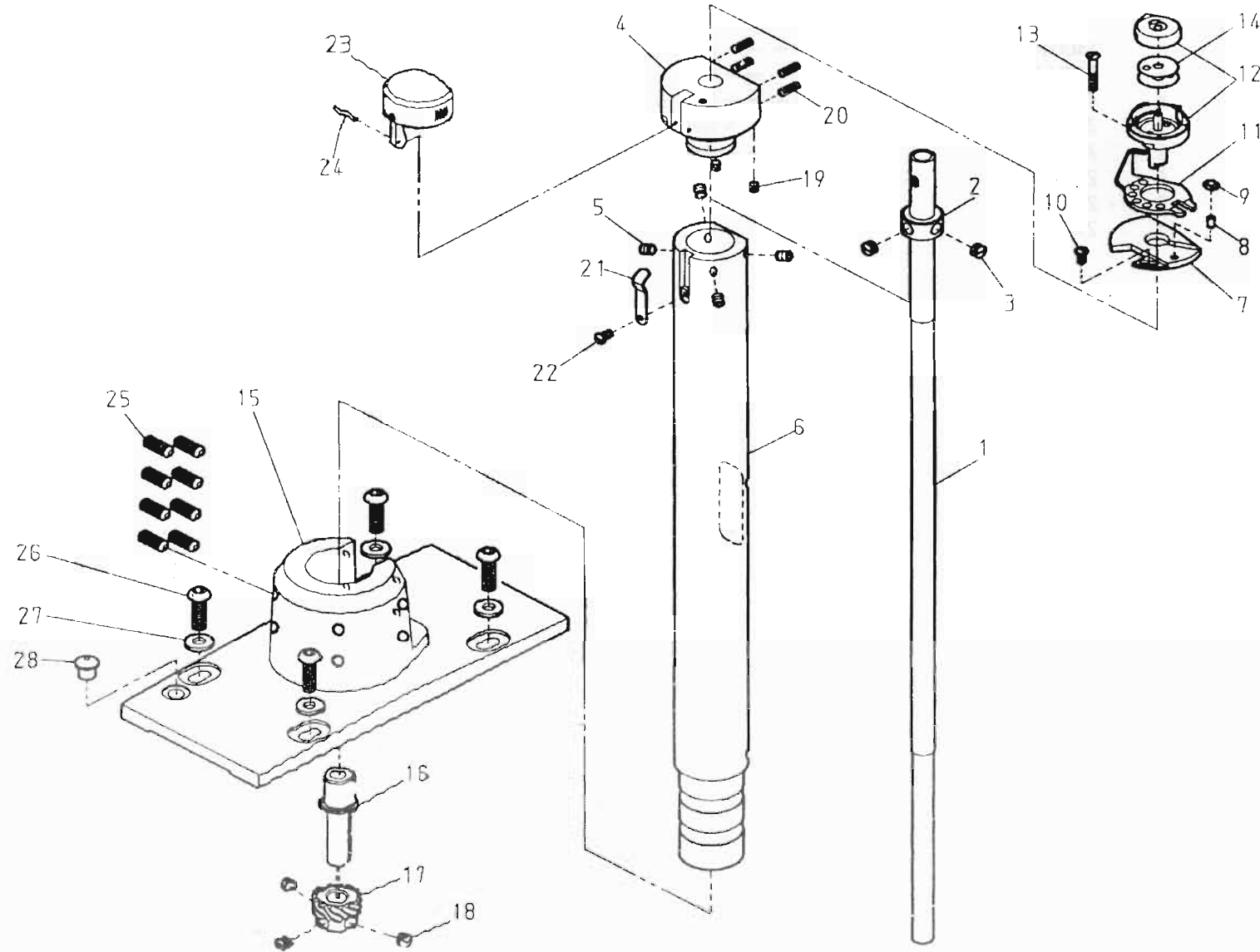


J. CS-8365 下軸・送料關係 LOWER SHAFT & FEED MECHANISM COMPONENTS (3/3)

REF.No	NOTE	零件號碼 Part No.	零件名稱 Name of Part	件數 QTY	備註 Remarks
1		4400162500	送齒板 ----- Feed Link -----	1	
2		4400162600	狗齒板滑塊 ---- Slide Block -----	1	
3		ZSG15059	螺絲 ----- Hinge Screw -----	1	
4		4400161400	單針狗齒 ---- Feed Dog -----	1	
5		ZSB11093	螺絲 ----- Screw 11/64-40*4.3 -----	1	
6		4400187100	護蓋 ----- Support Plate -----	1	
7		ZSB11032	螺絲 ----- Screw 11/64-40*7.8 -----	4	
8		ZMA08002	螺絲 ----- Screw M8*1.25*16 -----	1	
9		ZML08001	螺帽 ----- Nut M8*1.25 -----	1	
10		ZSG16027	螺絲 ----- Hinge Screw -----	1	
11		ZSL16010	螺帽 ----- Nut 1/4-24 -----	1	

K. CS-8365 釜軸座關係 HOOK SADDLE MECHANISM COMPONENTS

梭殼 T6105-0A
(何云'R提供)

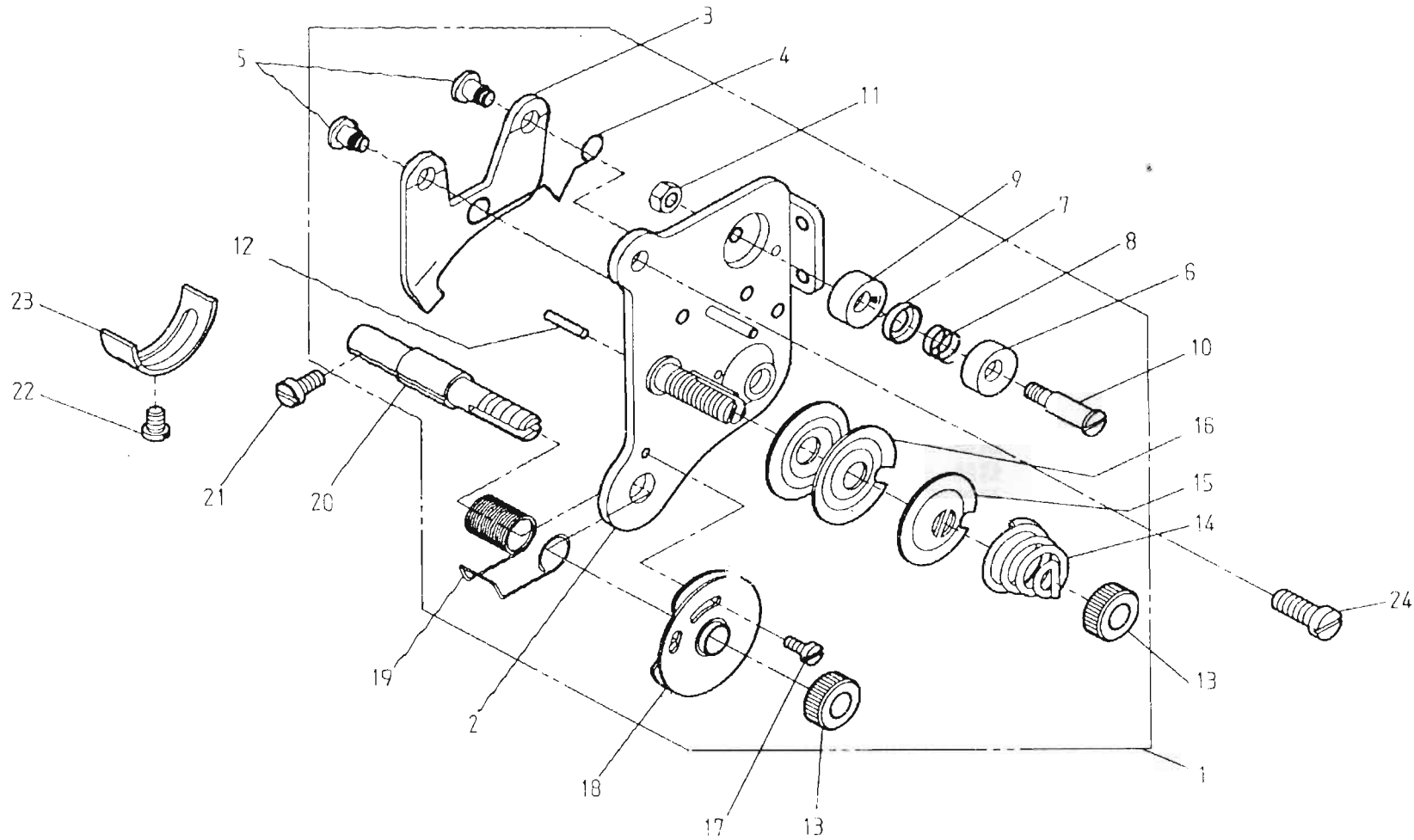


K. CS-8365 釜軸座關係 HOOK SADDLE MECHANISM COMPONENTS

REF.No	NOTE	零件號碼	零件名稱	Name of Part	件數	備註
		Part No.			Q'TY	Remarks
1		4400186300	釜軸	Hook Shaft	1	
2		LG4014-0A	定環	Collar	1	
3		ZSH16005	螺絲	Screw 1/4-40*4.5	2	
4		4400110600	釜台	Hook Saddle	1	
5		ZMH05002	螺絲	Screw M5*0.8*6	4	
6		4400186000	釜台支持	Hook Saddle Support	1	
7		4400186900	牛角連接器	Openner Link	1	
8		YA032057	固定銷	Pin	1	
9		B6017-0A	牛角導塊	Openner Slide Block	1	
10		ZSB09029	螺絲	Screw 9/64-40*6	1	
11		4400186800	牛角	Openner	1	
12		4400185100	梭頭(套)	Hook Asm.	1	
13		ZSC09025	螺絲	Screw 9/64-36*26	1	
14		A7006-0A	梭孔	Bobbin	1	
15		4400186100	釜台支持座	Hook Saddle Support Base	1	
16		4400188100	套筒	Bushing	1	
17		C4025-0A	斜齒輪(小)	Spiral Gear (Small)	1	
18		ZSA16010	螺絲	Screw 1/4-40*4	3	
19		ZSA09010	螺絲	Screw 9/64-40*6	2	
20		ZSA09006	螺絲	Screw 9/64-40*10	4	
21		4400183700	彈簧板	Spring Plate	1	
22		ZSB08036	螺絲	Screw 1/8-40*3.5	1	
23		4400183604	釜蓋(套)	Hook Cover Asm.	1	
24		YD020014	彈簧銷	Spring Pin	1	
25		ZMH06009	螺絲	Screw M6*1*15	8	
26		ZMQ06002	螺絲	Screw M6*1*20	4	
27		WA060004	平墊圈	Washer 6	4	
28		A1077-0A	油蓋	Cap	1	

Đổi mã 4400186801 ←

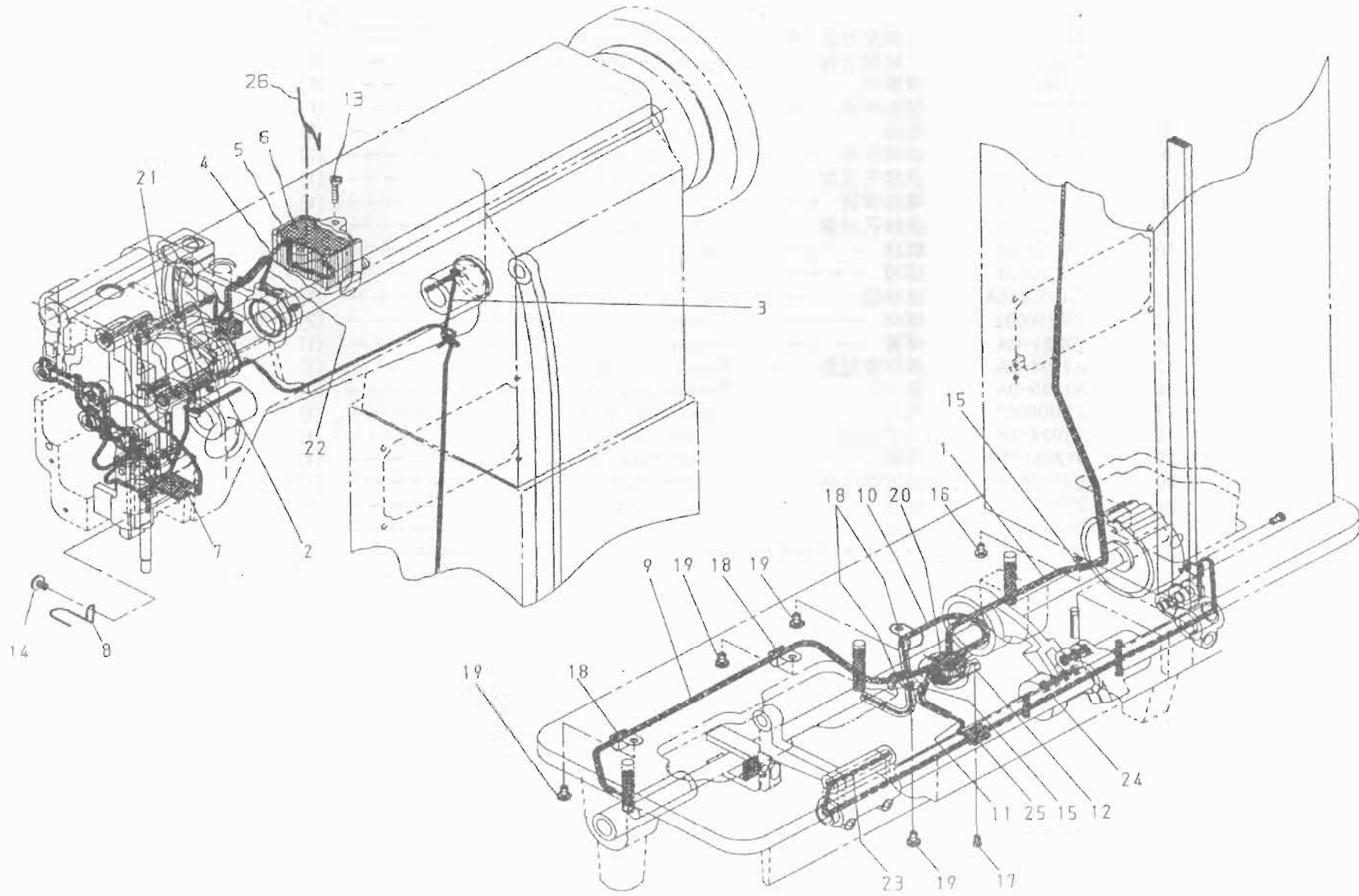
L. CS-8365 縫紉壓力調整關係 UPPER THREAD TENSION REGULATOR MECHANISM COMPONENTS



L. CS-8365 上線壓力調整關係 UPPER THREAD TENSION REGULATOR MECHANISM COMPONENTS

REF No	零件號碼 Part No.	零件名稱	Name of Part	件數 Q'TY	備註 Remarks
1	4400310505	上線壓力板(套)	Thread Tension Regulator Asm.	1	
2	A1038-0A	上線壓力板	Mounting Plate Asm.	(1)	
3	EJ1037-0A	彈簧板	Tension Releasing Plate	(1)	
4	A1036-0A	壓板彈簧	Tension Releasing Spring	(1)	
5	ZSG09004	螺絲	Hinge Screw	(2)	
6	A1030-0A	過線孔台	Thread Guide Disk	(1)	
7	A1031-0A	過線孔圓盤	Thread Guide Disk	(1)	
8	A1032-0A	導線彈簧	Spring	(1)	
9	A1033-0A	過線孔內蓋	Thread Guide Bracket	(1)	
10	ZSG09005	螺絲	Hinge Screw	(1)	
11	ZSL09001	螺帽	Nut 9/64-40	(1)	
12	EJ1028-0A	緩線鎖	Tension Releasing Pin (small) $\phi 2*12$	(1)	
13	ZSN16002	螺帽	Tension Thumb Nut 1/4-40	(2)	
14	E1021-0A	彈簧	Tension Spring	(1)	
15	A1034-0A	線調整壓盤	Tension Regulator Presser Disk	(1)	
16	A1035-0A	壓力板	Tension Regulator Disk	(2)	
17	ZSB06001	螺絲	Screw 3/32-56*6	(1)	
18	A1024-1A	過線盤組	Tension Controller Disk Set	(1)	
19	6120310801	彈簧	Thread Take-up Spring	(1)	
20	EJ1026-4A	調整螺絲棒	Tension Stud	(1)	
21	ZSB09007	螺絲	Screw 15/64-28*11	1	
22	ZSB09005	螺絲	Screw 9/64-40*5	1	
23	J1041-0A	線軸彈簧調整器	Stopper	1	
24	ZSB11022	螺絲	Screw 11/64-40*7	1	

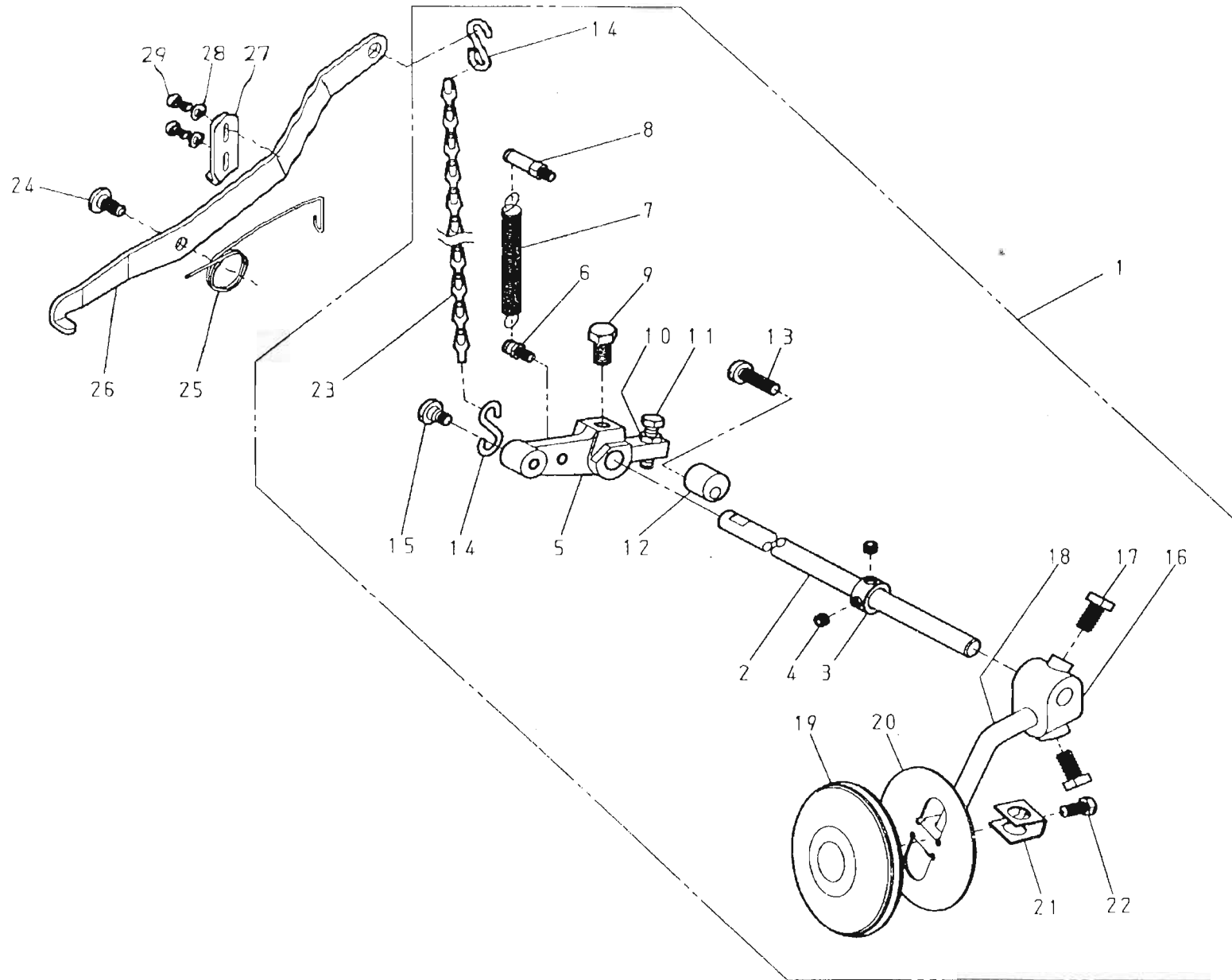
M. CS-8365 油潤滑機構 OIL LUBRICATION MECHANISM COMPONENTS



M. CS - 8365 油潤滑關係 OIL LUBRICATION MACHANISM COMPONENTS

REF.No	NOTE	零件號碼 Part No.	零件名稱 Name of Part	件數 QTY	備註 Remarks
1		8370357035	油線(套) ----- Oil Wick Asm. -----	1	
2		XA300045	油線 ----- Oil Wick ϕ 2.5*45 -----	1	
3		XA300140	油線 ----- Oil Wick -----	1	
4		XA300160	油線 ----- Oil Wick ϕ 3*160 -----	1	
5		EJ1366-0A	油溜 ----- Oil Reservoir -----	1	
6		8370355500	油綿 ----- Felt -----	1	
7		XB316001	油綿 ----- Felt -----	1	
8		EJ4175-0A	油線固定片 ----- Holder -----	1	
9		8370357105	油線(套) ----- Oil Wick Asm. -----	1	
10		8370357205	油線(套) ----- Oil Wick Asm. -----	1	
11		8370357305	油線(套) ----- Oil Wick Asm. -----	1	
12		EJ6076-0A	釜軸油溜 ----- Oil Reservoir -----	1	
13		ZMB04022	螺絲 ----- Screw M4*15 -----	2	
14		ZSB11016	螺絲 ----- Screw 11/64-40*6.5 -----	1	
15		EJ4172-0A	油管固定片 ----- Holder -----	2	
16		ZSB09011	螺絲 ----- Screw 9/64-40*6.5 -----	1	
17		ZSB09018	螺絲 ----- Screw 9/64-40*6.5 -----	3	
18		EJ1375-0A	油管固定片 ----- Holder -----	4	
19		ZSB09011	螺絲 ----- Screw 9/64-40*6.5 -----	4	
20		8370355600	油綿 ----- Felt -----	1	
21		XA300240	油線 ----- Oil Wick ϕ 2.5*240 -----	1	
22		XB206003	油線(套) ----- Oil Pipe Com. -----	1	
23		XA300150	油線 ----- Oil Wick ϕ 3*150 -----	1	
24		XA300430	油線 ----- Oil Wick ϕ 2.5*430 -----	1	
25		XB110001	油綿 ----- Felt -----	1	
26		EJ1369-0A	油綿支持片 ----- Felt Holder -----	1	

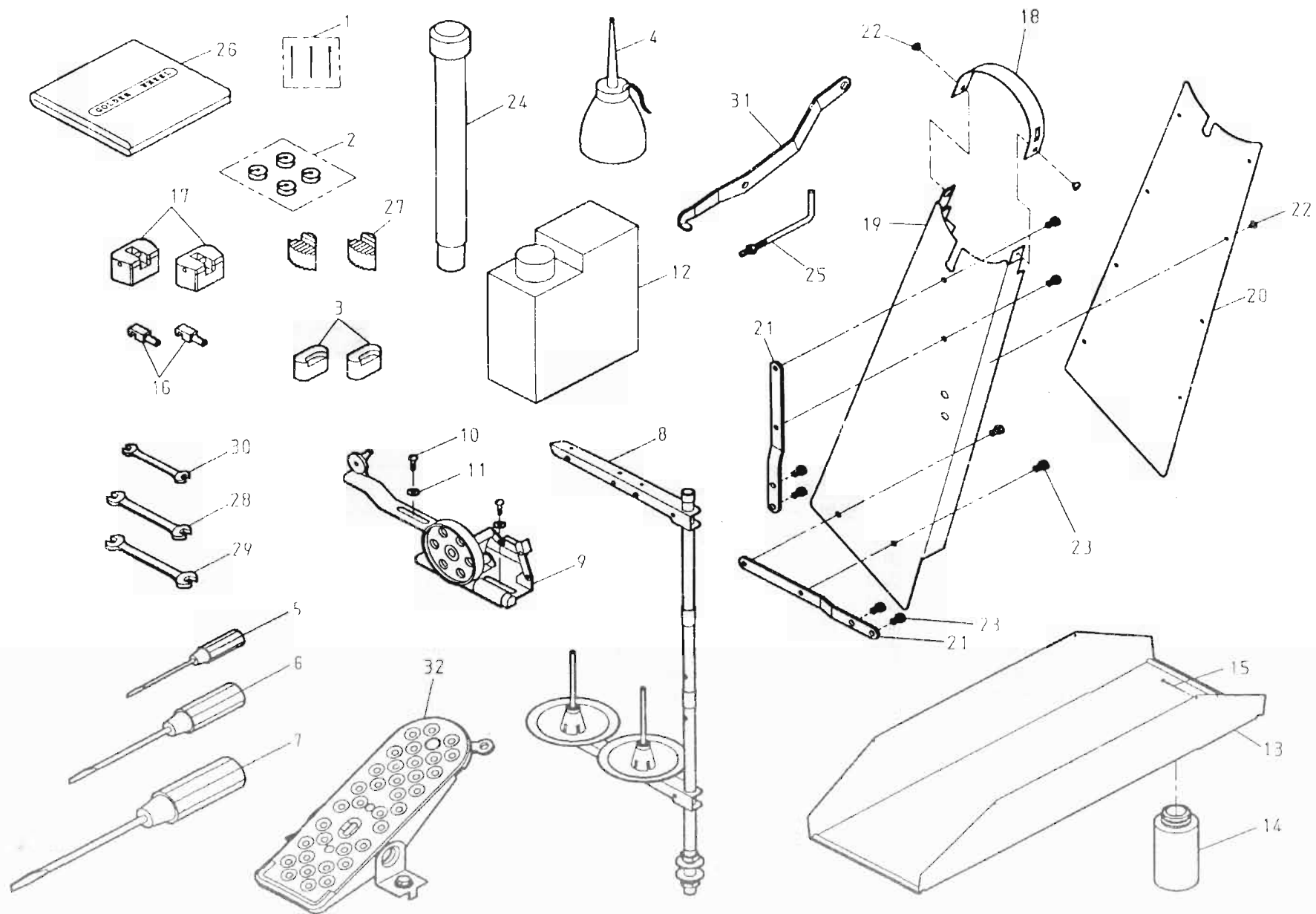
N. CS-8365 脚心器 KNEE LIFTER COMPONENTS



N. CS-8365 脚弓關係 KNEE LIFTER COMPONENTS

REF.No	NOTE	零件號碼 Part No.	零件名稱	Name of Part	件數 QTY	備註 Remarks
1		8365703000	脚弓組	Knee Lever Bottom Parts Assy.	1	
2		8370341700	脚押直桿	Knee lifter shaft	(1)	
3		LG4014-0A	定環	Collar	(1)	
4		ZSH16005	螺絲	Screw 1/4-40*4.5	(2)	
5		8370341609	連接器	Knee Lifter Crank (Rear)	(1)	
6		ZMK05017	彈簧掛	Spring Hook	(1)	
7		L1312-0A	彈簧	Spring	(1)	
8		ZMK05018	彈簧掛	Spring Hook	(1)	
9		ZSD20007	螺絲	Screw 5/16-18*16	(1)	
10		ZML06002	螺帽	Nut M6*1	(1)	
11		ZMD06005	螺絲	Screw M6*1*25	(1)	
12		8370341100	固定銷	Stopper	(1)	
13		ZSB16011	螺絲	Screw 1/4-24*25	(1)	
14		4710340800	S型銷	S-plug	(2)	
15		ZSG16013	螺絲	Hinge Screw	(1)	
16		A7034-0A	連接器	Knee lifter crank	(1)	
17		ZSD20007	螺絲	Screw 5/16-18*15.5	(2)	
18		8370341900	脚押曲桿	Knee Lever Rod	(1)	
19		A7037-0A	脚弓大餅	Knee Guird	(1)	
20		A7037-1A	脚弓餅支架	Knee Plate	(1)	
21		A7036-0A	固定支架	Retainer	(1)	
22		ZSD15007	螺絲	Screw 15/64-28*14	(1)	
23		B7060-0A	鎖子	Chain (517.6mm)	(1)	
24		ZSG16005	螺絲	Screw 1/4-24*14	1	
25		EJ1301-0A	脚弓板彈簧	Twist Spring	1	
26		8370341500	押脚提桿	Knee Lifting Lever	1	
27		8370343700	固定片	Stopper	1	
28		WA059002	平整圈	Washer	2	
29		ZSB11012	螺絲	Screw 11/64-40*8	2	

O. CS-8365 附件關係 ACCESSORIES



O. CS-8365 附件 ACCESSORIES

REF.No	NOTE	零件號碼 Part No.	零件名稱	Name of Part	件數 Q'TY	備註 Remarks
1		INDPX17-22	針	Needle DP × 17-22	3	
2		A7006-0A	梭孔	Bobbin	4	
3		4400911500	防振橡膠	Vibration Preventing Rubber	2	
4		A7012-1A	油壺 (中)	Oiler	1	
5		A7010-0A	螺絲起子 (小)	Screw Driver (small)	1	
6		A7010-1A	螺絲起子 (中)	Screw Driver (middle)	1	
7		A7010-2A	螺絲起子 (大)	Screw Driver (large)	1	
8		8370920000	線架	Cotton Stand	1	
9		A7040-0A	捲線器組	Bobbin Winder	1	
10		ZMT05001	木螺絲	Screw 4.5 × 22	2	
11		WA059003	平墊圈	Washer	2	
12		A7012-2A	油壺 (大)	Oil Can	1	
13		8370912001	下油槽	Oil Pan	1	
14		A7012-0A	油壺 (小)	Oiler	1	
15		A7011-0A	鐵釘	Nail	12	
16		4400911700	後鈕鉤	Head Hinge	2	
17		J7022-0B	後鈕座	Rubber Hinge	2	
18	※	8370335505	皮帶蓋 (套)	Belt Cover Asm.	1	
19	※	8370335100	皮帶蓋	Belt Cover (A)	1	
20	※	8370335200	皮帶蓋	Belt Cover (B)	1	
21	※	8370335600	安裝板	Plate	2	
22	※	ZMB04018	螺絲	Screw M4*5	10	
23	※	ZSB15010	螺絲	Screw 15/64-28*10	8	
24		4400119005	枕木	Head Rest	1	
25	※	8370912505	檢出器定位銷 (套)	Supporter Asm.	1	
26		8370910900	車頭蓋	Vinyl cover	1	
27		E7026-1B	橡膠墊座	Head Cushion	2	
28		TRB11 × 13	兩口板手	Spanner	1	
29		TRB12 × 14	兩口板手	Spanner	1	
30		TRB09 × 10	兩口板手	Spanner	1	
31		8370341501	押脚堤桿	Knee Lifting Lever	1	
32		L7070-0A	踏板組	Pedal Assy.	1	

Note (注記) ※ Optional part 特別注文部品

P. CS-8365 零件號碼與頁數對照表 NUMERICAL PARTS-LIST (1/3)

零件號碼 Part No.	頁數 Page RefNo.	零件號碼 Part No.	頁數 Page RefNo.	零件號碼 Part No.	頁數 Page RefNo.	零件號碼 Part No.	頁數 Page RefNo.
4400110600	23- 4	8370150100	19- 14	A1024-1A	25- 18	BB6000ZZ	5- 39
4400119005	31- 24	8370160105	19- 13	A1030-0A	25- 6	BB6203ZZNR	17- 21
4400161400	21- 4	8370160600	17- 1	A1031-0A	25- 7	BB6204ZZNR	5- 14
4400162500	21- 1	8370160905	17- 10	A1032-0A	25- 8	BNTA2616Z	17- 14
4400162600	21- 2	8370164005	15- 18	A1033-0A	25- 9	C1052-0A	3- 29
4400164100	15- 20	8370165100	15- 4	A1034-0A	25- 15	C1054-0A	3- 25
4400183700	23- 21	8370166000	15- 13	A1035-0A	25- 16	C1061-0A	7- 5
4400185100	23- 12	8370167000	15- 32	A1036-0A	25- 4	C1141-0A	3- 40
4400186000	23- 6	8370180100	17- 3	A1038-0A	25- 2	C1174-0A	15- 41
4400186100	23- 15	8370180300	17- 18	A1062-0A	7- 7	C1183-0A	13- 3
4400186300	23- 1	8370270105	7- 12	A1077-0A	3- 11	C1375-2A	9- 18
4400186800	23- 11	8370271000	9- 13	A1077-0A	23- 28	C4015-0A	17- 4
4400186900	23- 7	8370271100	9- 15	A1107-0A	7- 9	C4025-0A	23- 17
4400187100	21- 6	8370311605	3- 12	A1130-0A	11- 10	C4026-0A	17- 25
4400188100	23- 16	8370335100	31- 19	A1131-1A	3- 6	E1021-0A	25- 14
4400190100	7- 6	8370335200	31- 20	A7006-0A	23- 14	E1158-0A	15- 16
4400310505	25- 1	8370335505	31- 18	A7006-0A	31- 2	E1171-2A	15- 17
4400911500	31- 3	8370335600	31- 21	A7010-0A	31- 5	E1172-2A	15- 19
4400911700	31- 16	8370341100	13- 19	A7010-1A	31- 6	E1173-2A	15- 21
4710340800	29- 14	8370341100	29- 12	A7010-2A	31- 7	E1174-2A	15- 22
6120117400	3- 41	8370341500	29- 26	A7011-0A	31- 15	E1291-0A	11- 3
6120310801	25- 19	8370341501	31- 31	A7012-0A	31- 14	E1297-0A	11- 8
8365111300	3- 18	8370341609	29- 5	A7012-1A	31- 4	E1298-0A	11- 12
4400183604	23- 23	8370341700	29- 2	A7012-2A	31- 12	E7026-1B	31- 27
8365703000	29- 1	8370341900	29- 18	A7034-0A	29- 16	EJ1010-0A	3- 31
8370120100	5- 9	8370343700	29- 27	A7036-0A	29- 21	EJ1010-1A	3- 27
8370120800	5- 1	8370353100	11- 23	A7037-0A	29- 19	EJ1011-0A	3- 37
8370122300	5- 17	8370353200	11- 16	A7037-1A	29- 20	EJ1011-1A	3- 4
8370131000	5- 19	8370355500	27- 6	A7040-0A	31- 9	EJ1012-0A	3- 7
8370131504	5- 36	8370355600	27- 20	B1274-0A	13- 8	EJ1012-0A	3- 20
8370131505	5- 35	8370357005	27- 1	B1275-0A	13- 4	EJ1014-0A	3- 35
8370131700	5- 38	8370357105	27- 9	B1283-0A	7- 28	EJ1017-0A	3- 33
8370131704	5- 37	8370357205	27- 10	B1321-0A	5- 10	EJ1026-4A	25- 20
8370143605	11- 14	8370357305	27- 11	B1321-0A	5- 34	EJ1028-0A	25- 12
8370143700	7- 29	8370910900	31- 26	B4131-0A	5- 27	EJ1037-0A	25- 3
8370145105	11- 21	8370912001	31- 13	B4135-0A	5- 26	EJ1043-0A	3- 36
8370151000	7- 33	8370912505	31- 25	B6017-0A	23- 9	EJ1051-0A	3- 9
8370153000	13- 14	8370920000	31- 8	B7060-0A	29- 23	EJ1055-0A	3- 13

P. CS-8365 零件號碼與頁數對照表 NUMERICAL PARTS-LIST (2/3)

零件號碼 Part No.	頁數 Page RefNo.	零件號碼 Part No.	頁數 Page RefNo.	零件號碼 Part No.	頁數 Page RefNo.	零件號碼 Part No.	頁數 Page RefNo.
EJ1056-0A	3- 14	EJ1331-0A	9- 11	EJ4153-0A	15- 35	WH209003	15- 40
EJ1057-0A	3- 15	EJ1332-0A	9- 3	EJ4154-0A	15- 30	WH212004	15- 39
EJ1063-0A	3- 2	EJ1333-0A	9- 2	EJ4156-0A	15- 29	XA300027	7- 35
EJ1070-0A	7- 19	EJ1334-0A	9- 1	EJ4157-0A	15- 5	XA300030	17- 16
EJ1074-0A	7- 17	EJ1337-0A	9- 16	EJ4172-0A	27- 15	XA300030	19- 7
EJ1080-0A	7- 11	EJ1341-0A	9- 8	EJ4175-0A	27- 8	XA300035	15- 33
EJ1081-0A	7- 15	EJ1343-0A	9- 9	EJ6076-0A	27- 12	XA300040	7- 16
EJ1090-0A	7- 13	EJ1344-0A	9- 5	F1076-0A	7- 22	XA300045	27- 2
EJ1091-0A	7- 2	EJ1366-0A	27- 5	INDPX17-22	31- 1	XA300055	15- 31
EJ1092-0A	7- 26	EJ1369-0A	27- 26	J1041-0A	25- 23	XA300065	7- 10
EJ1101-0A	5- 6	EJ1375-0A	27- 18	J7022-0B	31- 17	XA300080	7- 1
EJ1103-0A	5- 15	EJ4012-0A	17- 6	L1312-0A	29- 7	XA300085	9- 17
EJ1150-0A	15- 1	EJ4016-0A	17- 12	L7070-0A	31- 32	XA300130	11- 24
EJ1155-0A	15- 26	EJ4017-0A	17- 13	LG4014-0A	23- 2	XA300140	11- 17
EJ1160-0A	15- 11	EJ4018-0A	19- 8	LG4014-0A	29- 3	XA300140	27- 3
EJ1161-0A	15- 6	EJ4040-0A	19- 20	OP00100A	15- 25	XA300150	27- 23
EJ1163-0A	15- 7	EJ4041-0A	19- 26	RB200250	11- 11	XA300160	27- 4
EJ1166-0A	15- 12	EJ4044-0A	19- 1	RB200260	17- 15	XA300200	7- 24
EJ1170-0A	15- 24	EJ4045-1A	19- 10	RE000050	17- 7	XA300240	27- 21
EJ1180-0A	13- 12	EJ4046-0A	19- 24	RE000060	19- 5	XA300430	27- 24
EJ1200-0A	13- 6	EJ4047-0A	19- 6	S1013-0A	3- 22	XB110001	27- 25
EJ1208-0A	13- 1	EJ4048-0A	19- 4	S1014-0A	3- 1	XB118001	5- 8
EJ1272-0A	13- 10	EJ4051-2A	19- 11	TRB09 × 10	31- 30	XB206003	27- 22
EJ1273-0A	13- 9	EJ4055-0A	19- 19	TRB11 × 13	31- 28	XB304001	17- 2
EJ1278-0A	11- 27	EJ4060-0A	17- 19	TRB12 × 14	31- 29	XB312002	19- 18
EJ1280-0A	7- 32	EJ4061-0A	17- 22	WA049003	3- 38	XB316001	27- 7
EJ1281-0A	7- 31	EJ4115-0A	15- 14	WA049006	11- 28	YA032057	23- 8
EJ1282-0A	7- 23	EJ4120-0A	17- 9	WA059002	7- 27	YB040025	9- 4
EJ1283-0A	11- 18	EJ4121-0A	17- 8	WA059002	29- 28	YC010010	5- 24
EJ1284-0A	11- 19	EJ4130-0D	5- 32	WA059003	31- 11	YD020014	23- 24
EJ1286-0A	11- 15	EJ4132-0A	5- 25	WA060004	23- 27	YD050018	3- 23
EJ1287-0A	11- 22	EJ4133-0A	5- 28	WA069001	5- 41	ZMA08002	21- 8
EJ1290-0A	11- 1	EJ4134-0A	5- 23	WA069003	19- 16	ZMB04018	31- 22
EJ1295-0A	11- 5	EJ4136-0A	5- 29	WA069011	11- 7	ZMB04022	27- 13
EJ1300-0A	13- 17	EJ4137-0A	5- 22	WA100013	17- 24	ZMD06005	29- 11
EJ1301-0A	29- 25	EJ4138-0A	5- 21	WARN000500	3- 24	ZMG06003	11- 9
EJ1320-0B	5- 12	EJ4151-0A	17- 17	WG000010	15- 10	ZMG06013	19- 22
EJ1323-0A	5- 20	EJ4152-0A	15- 34	WH206001	19- 21	ZMH05002	23- 5

P. CS-8365 零件號碼與頁數對照表 NUMERICAL PARTS-LIST (3/3)

零件號碼	頁數	零件號碼	頁數	零件號碼	頁數	零件號碼	頁數
Part No.	Page RefNo.	Part No.	Page RefNo.	Part No.	Page RefNo.	Part No.	Page RefNo.
ZMH06009	23- 25	ZSB09005	25- 22	ZSB15006	5- 11	ZSG16005	29- 24
ZMK05017	29- 6	ZSB09007	25- 21	ZSB15006	5- 16	ZSG16013	29- 15
ZMK05018	29- 8	ZSB09011	3- 17	ZSB15006	5- 31	ZSG16018	11- 25
ZML06001	11- 4	ZSB09011	27- 16	ZSB15006	15- 2	ZSG16027	21- 10
ZML06002	29- 10	ZSB09011	27- 19	ZSB15006	15- 37	ZSH15002	17- 11
ZML06005	19- 23	ZSB09018	9- 19	ZSB15006	15- 38	ZSH15006	17- 28
ZML08001	21- 9	ZSB09018	27- 17	ZSB15009	15- 8	ZSH16001	11- 13
ZMQ06002	23- 26	ZSB09028	13- 15	ZSB15010	31- 23	ZSH16005	23- 3
ZMT05001	31- 10	ZSB09029	23- 10	ZSB15026	5- 18	ZSH16005	29- 4
ZSA09006	23- 20	ZSB09032	7- 18	ZSB15037	15- 3	ZSK11036	13- 7
ZSA09010	23- 19	ZSB10002	13- 5	ZSB15041	5- 13	ZSK16017	13- 16
ZSA11005	9- 6	ZSB11009	7- 34	ZSB16004	9- 12	ZSL09001	25- 11
ZSA15010	7- 8	ZSB11010	7- 30	ZSB16004	19- 3	ZSL16010	21- 11
ZSA15017	5- 3	ZSB11011	15- 15	ZSB16004	19- 25	ZSL20004	9- 14
ZSA15017	7- 4	ZSB11012	3- 3	ZSB16011	13- 20	ZSN16002	25- 13
ZSA15019	5- 2	ZSB11012	3- 5	ZSB16011	29- 13		
ZSA15021	5- 33	ZSB11012	3- 8	ZSB18001	5- 5		
ZSA15025	15- 27	ZSB11012	3- 21	ZSB18002	5- 4		
ZSA15025	15- 28	ZSB11012	3- 28	ZSB20009	7- 3		
ZSA15028	11- 2	ZSB11012	3- 32	ZSC06005	7- 14		
ZSA16007	17- 29	ZSB11012	3- 39	ZSC09006	17- 23		
ZSA16010	17- 26	ZSB11012	29- 29	ZSC09009	3- 26		
ZSA16010	19- 2	ZSB11014	15- 9	ZSC09021	3- 30		
ZSA16010	23- 18	ZSB11016	27- 14	ZSC09021	3- 34		
ZSA16020	17- 27	ZSB11017	13- 2	ZSC09025	23- 13		
ZSA16021	17- 5	ZSB11022	25- 24	ZSD11001	7- 25		
ZSA16025	17- 20	ZSB11026	11- 26	ZSD15002	19- 15		
ZSA16033	5- 42	ZSB11028	15- 36	ZSD15007	5- 40		
ZSA16033	9- 7	ZSB11029	19- 12	ZSD15007	29- 22		
ZSA16033	9- 10	ZSB11029	19- 28	ZSD16007	11- 6		
ZSA16034	5- 7	ZSB11032	21- 7	ZSD20007	29- 9		
ZSA16034	13- 13	ZSB11041	3- 10	ZSD20007	29- 17		
ZSA16034	19- 27	ZSB11069	11- 20	ZSE11002	3- 19		
ZSB06001	25- 17	ZSB11083	13- 11	ZSG08003	3- 16		
ZSB06002	7- 20	ZSB11093	21- 5	ZSG09004	25- 5		
ZSB08002	7- 21	ZSB12015	19- 9	ZSG09005	25- 10		
ZSB08010	19- 17	ZSB12017	15- 23	ZSG15059	21- 3		
ZSB08036	23- 22	ZSB15004	5- 30	ZSG16003	13- 18		