

No.8365M00

# 金輪牌 GOLDEN WHEEL

1-Needle, Unisonfeed, Middle-Hight Post Bed, Lock-Stitch Machine  
For Medium-Weight Materials

CS-8365M

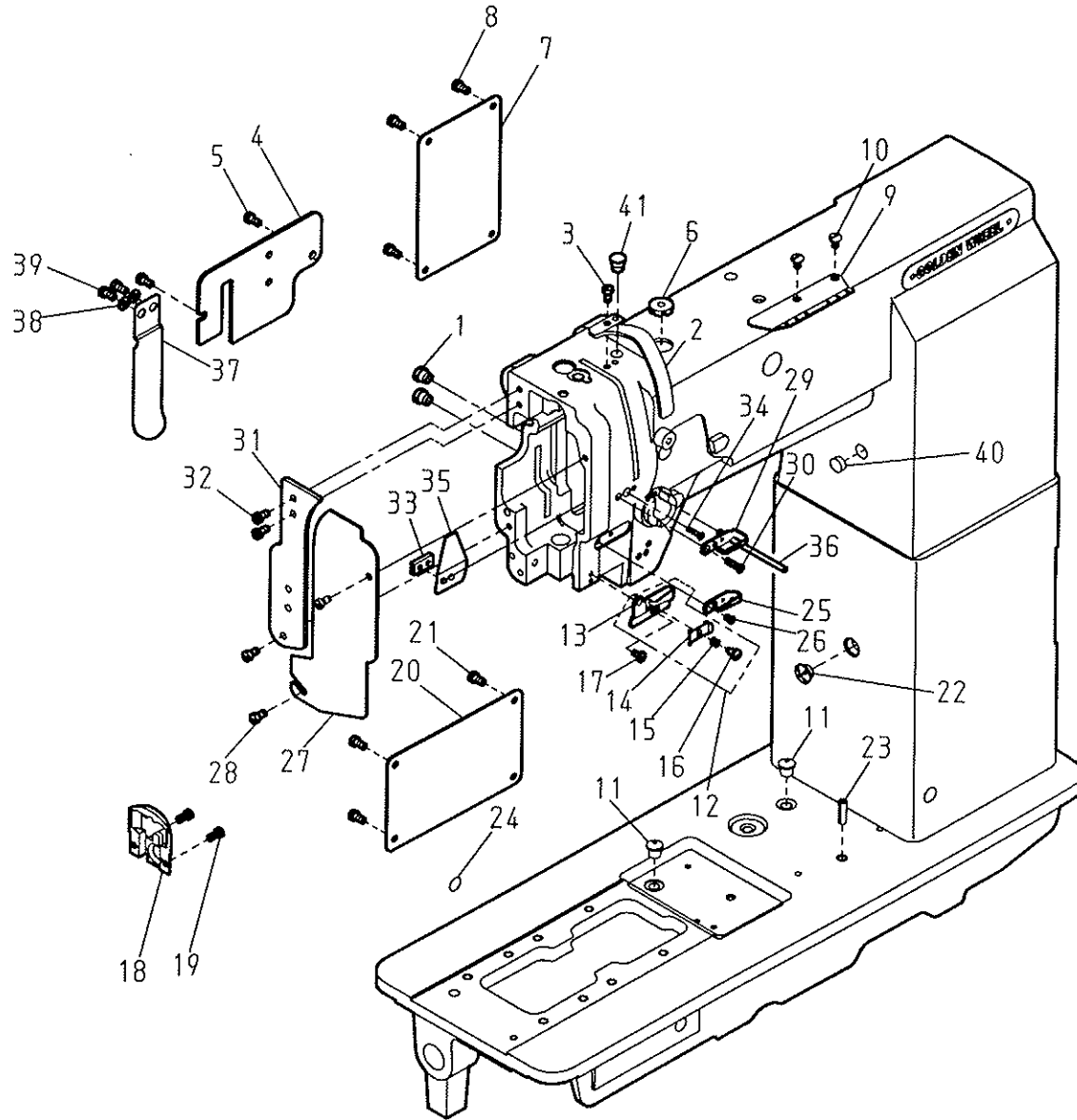
零件分解図 PARTS LIST

CHEE SIANG INDUSTRIAL CO.,LTD.

MODEL : CS-8365M

目 次	CONTENTS	PAGE
A. 本體關係	FRAME & MISCELLANEOUS COVER COMPONENTS	2-3
B. 上軸關係	MAIN SHAFT COMPONENTS	4-5
C. 針棒・天秤關係	NEEDLE BAR・THREAD TAKE-UP LEVER COMPONENTS	6-7
D. 針棒搖擺關係	NEEDLE BAR ROCKING MOTION MECHANISM COMPONENTS	8-9
E. 上部送料關係	UPPER FEED MECHANISM COMPONENTS	10-11
F. 押腳關係	PRESSURE BAR COMPONENTS	12-13
G. 縫目調整器關係	STITCH REGULATOR MECHANISM COMPONENTS	14-15
H. 下軸・送料關係(1/3)	LOWER SHAFT & FEED MECHANISM COMPONENTS (1/3)	16-17
I. 下軸・送料關係(2/3)	LOWER SHAFT & FEED MECHANISM COMPONENTS (2/3)	18-19
J. 下軸・送料關係(3/3)	LOWER SHAFT & FEED MECHANISM COMPONENTS (3/3)	20-21
K. 釜軸座關係	HOOK SADDLE MECHANISM COMPONENTS	22-23
L. 縫線壓力調整關係	UPPER THREAD TENSION REGULATOR MECHANISM COMPONENTS	24-25
M. 油潤滑關係	OIL LUBRICATION MECHANISM COMPONENTS	26-27
N. 腳弓關係	KNEE LIFTER COMPONENTS	28-29
O. 附件關係	ACCESSORIES	30-31
P. 零件號碼與頁數對照表	NUMERICAL PARTS—LIST	32-34

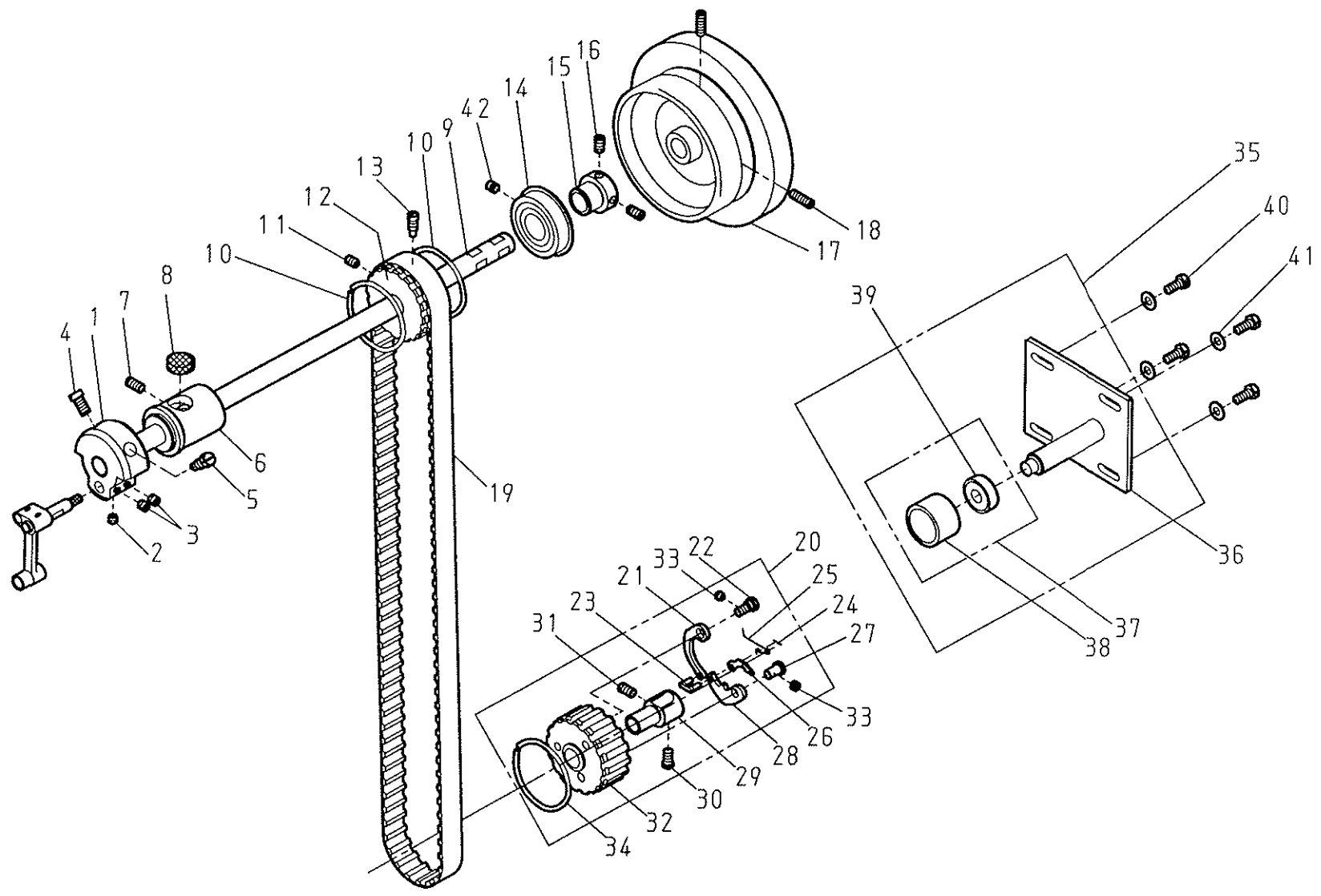
A. CS-8365M 本體關係 FRAME & MISCELLANEOUS COVER COMPONENTS



A. CS-8365M 本體關係 FRAME & MISCELLANEOUS COVER COMPONENTS

REF.No	NOTE	零件號碼 Part No.	零件名稱	Name of Part	件數 Q'TY	備註 Remarks
1		S1014-0A	橡膠塞	Rubber Plug	2	
2		EJ1063-0A	天秤護蓋	Thread Take-up Cover	1	
3		ZSB11012	螺絲	Screw 11/64-40*8	1	
4		EJ1011-1A	橫蓋	Arm Cover	1	
5		ZSB11012	螺絲	Screw 11/64-40*8	2	
6		A1131-1A	油蓋	Cap	1	
7		EJ1012-0A	側板	Arm Cover	1	
8		ZSB11012	螺絲	Screw 11/64-40*8	4	
9		EJ1051-0A	線掛	Thread Guide	1	
10		ZSB11041	螺絲	Screw 11/64-40*7	2	
11		A1077-0A	油蓋	Cap	2	
12		8370311605	線掛(套)	Thread Guide Asm.	1	
13		EJ1055-0A	線掛	Thread Guide	(1)	
14		EJ1056-0A	壓線具	Guide Plate	(1)	
15		EJ1057-0A	彈簧	Spring	(1)	
16		ZSG08003	螺絲	Hinge Screw	(1)	
17		ZSB09011	螺絲	Screw 9/64-40*6.5	1	
18		8365111300	針板	Throat Plate	1	
19		ZSE11002	螺絲	Screw 11/64-40*8	2	
20		EJ1012-0A	側板	Arm Cover	1	
21		ZSB11012	螺絲	Screw 11/64-40*8	4	
22		S1013-0A	橡膠塞	Rubber Plug	1	
23		YD050018	油管	Oil Pipe	1	
24		WARN000500	印記	Grand Mark	1	
25		C1054-0A	線掛	Thread Guide	1	
26		ZSC09009	螺絲	Screw 9/64-40*5.6	1	
27		EJ1010-1A	面板	Face Plate	1	
28		ZSB11012	螺絲	Screw 11/64-40*8	2	
29		C1052-0A	線掛	Thread Guide	1	
30		ZSC09021	螺絲	Screw 9/64-40*13	1	
31		EJ1010-0A	面板	Guide mounting Plate	1	
32		ZSB11012	螺絲	Screw 11/64-40*8	3	
33		EJ1017-0A	螺帽板	Spaser	1	
34		ZSC09021	螺絲	Screw 9/64-40*13	1	
35		EJ1014-0A	油防板	Oil Guard Plate	1	
36		EJ1043-0A	線銷	Tension releasing Pin	1	
37		EJ1011-0A	防塵蓋	Cover	1	
38		WA049003	平墊圈	Washer	2	
39		ZSB11012	螺絲	Screw 11/64-40*8	2	
40		C1141-0A	橡膠塞	Rubber Plug	1	
41		6120117400	橡膠塞	Rubber Plug	1	

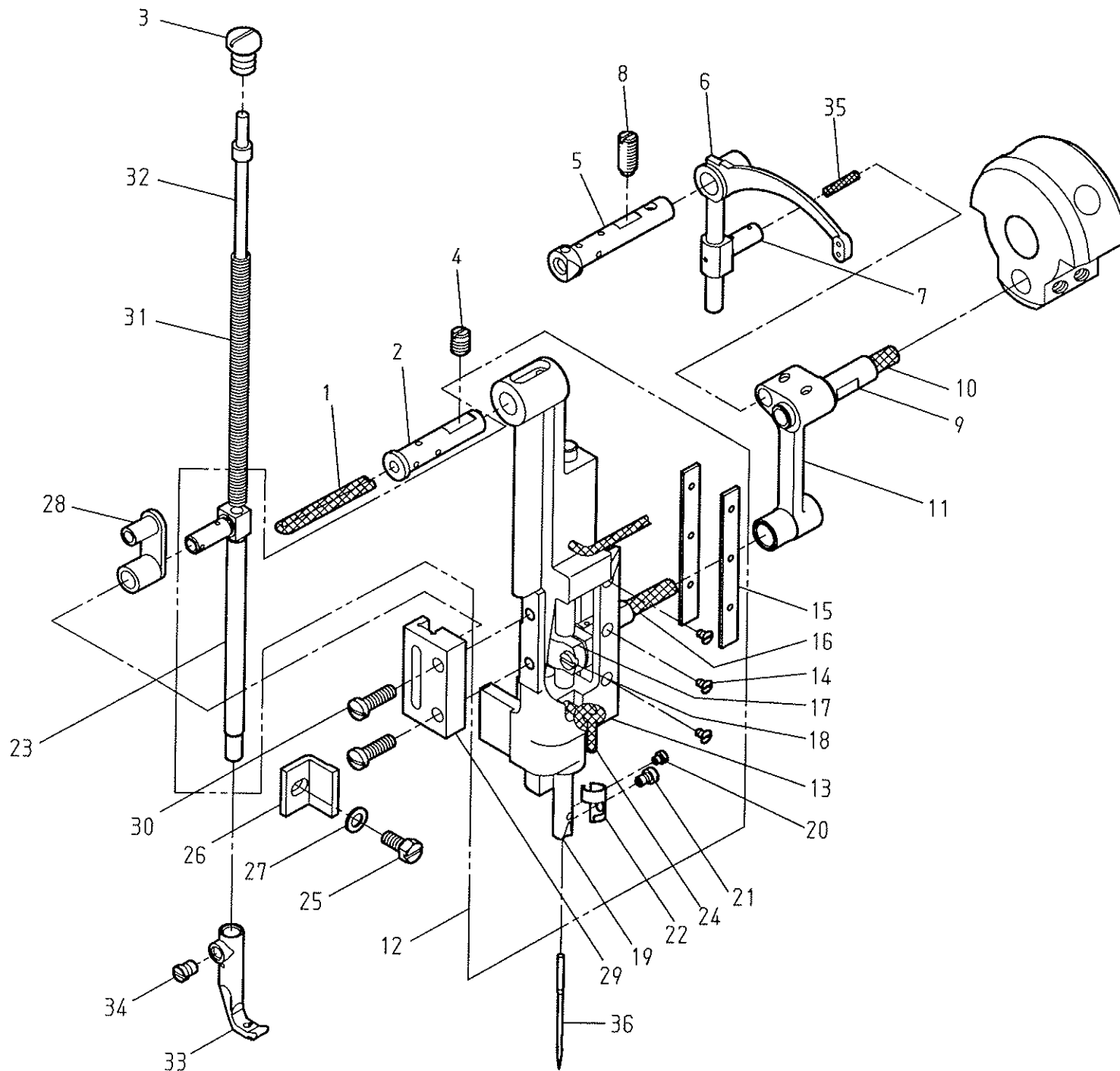
B. CS-8365M 上軸関係 MAIN SHAFT COMPONENTS



B. CS-8365M 上軸關係 MAIN SHAFT COMPONENTS

REF.No	NOTE	零件號碼	零件名稱	Name of Part	件數	備註
		Part No.			Q'TY	Remarks
1		8370120800	凸輪	Crank	1	
2		ZSA15019	螺絲	Screw 15/64-28*3	1	
3		ZSA15017	螺絲	Screw 15/64-28*8.5	2	
4		ZSB18002	螺絲	Screw 9/32-28*13	1	
5		ZSB18001	螺絲	Screw 9/32-28*9.5	1	
6		EJ1101-0A	上軸套筒 (前)	Arm Shaft Bushing (Left Front-side)	1	
7		ZSA16034	螺絲	Screw 1/4-24*14	1	
8		XB118001	油棉	Felt	1	
9		8370120100	上軸	Arm Shaft	1	
10		B1321-0A	齒輪邊環	Spring Flange	2	
11		ZSB15006	螺絲	Screw 15/64-28*8.5	1	
12		EJ1320-0B	齒形皮帶輪 (上)	Belt Pulley (Upper)	1	
13		ZSB15041	螺絲	Screw 15/64-28*14.5	1	
14		BB6204ZZNR	滾珠軸承	Ball Bearing	1	
15		EJ1103-0A	套管	Bushing	1	
16		ZSB15006	螺絲	Screw 15/64-28*8.5	2	
17		8370122300	皮帶輪	Balanse Wheel	1	
18		ZSB15026	螺絲	Screw 15/64-28*18	2	
19		83651310P0	齒形皮帶	Cog belt	1	
20		EJ1323-0A	齒形皮帶輪 (套)	Belt Pulley Asm.(Lower)	1	
21		EJ4138-0A	彈片壓板	Spring plate	(1)	
22		EJ4137-0A	偏心固定鎖	Pin $\phi$ 6*14.5	(1)	
23		EJ4134-0A	連接桿	Link	(1)	
24		YC010010	開口銷	Split Pin 1*10	(1)	
25		EJ4132-0A	離合器彈簧	Twist Spring	(1)	
26		B4135-0A	離合器棘	Plate	(1)	
27		B4131-0A	固定銷	Pin $\phi$ 6.35*13	(1)	
28		EJ4133-0A	離合器棘	Plate	(1)	
29		EJ4136-0A	套管	Bushing	(1)	
30		ZSB15004	螺絲	Screw 15/64-28*10.5	(1)	
31		ZSB15006	螺絲	Screw 15/64-28*8.5	(1)	
32		EJ4130-0D	齒形皮帶輪	Belt pulley (Lower)	(1)	
33		ZSA15021	螺絲	Screw 15/64-28*4.5	(2)	
34		B1321-0A	齒輪邊環	Spring Flange	(1)	
35		8370131505	惰輪座 (套)	Idler Base Asm.	1	
36		8370131504	惰輪座 (結合)	Idler Base Com.	(1)	
37		8370131704	惰輪 (結合)	Idler Com.	(1)	
38		8370131700	惰輪	Idler	(1)	
39		BB6000ZZ	滾珠軸承	Ball Bearing	(1)	
40		ZSD15007	螺絲	Screw 15/64-28*14	4	
41		WA069001	平墊圈	Washer	4	
42		ZSA16033	螺絲	Screw 1/4-24*7.5	1	

C. CS-8365M 針棒・天秤關係 NEEDLE BAR・THREAD TAKE-UP LEVER COMPONENTS

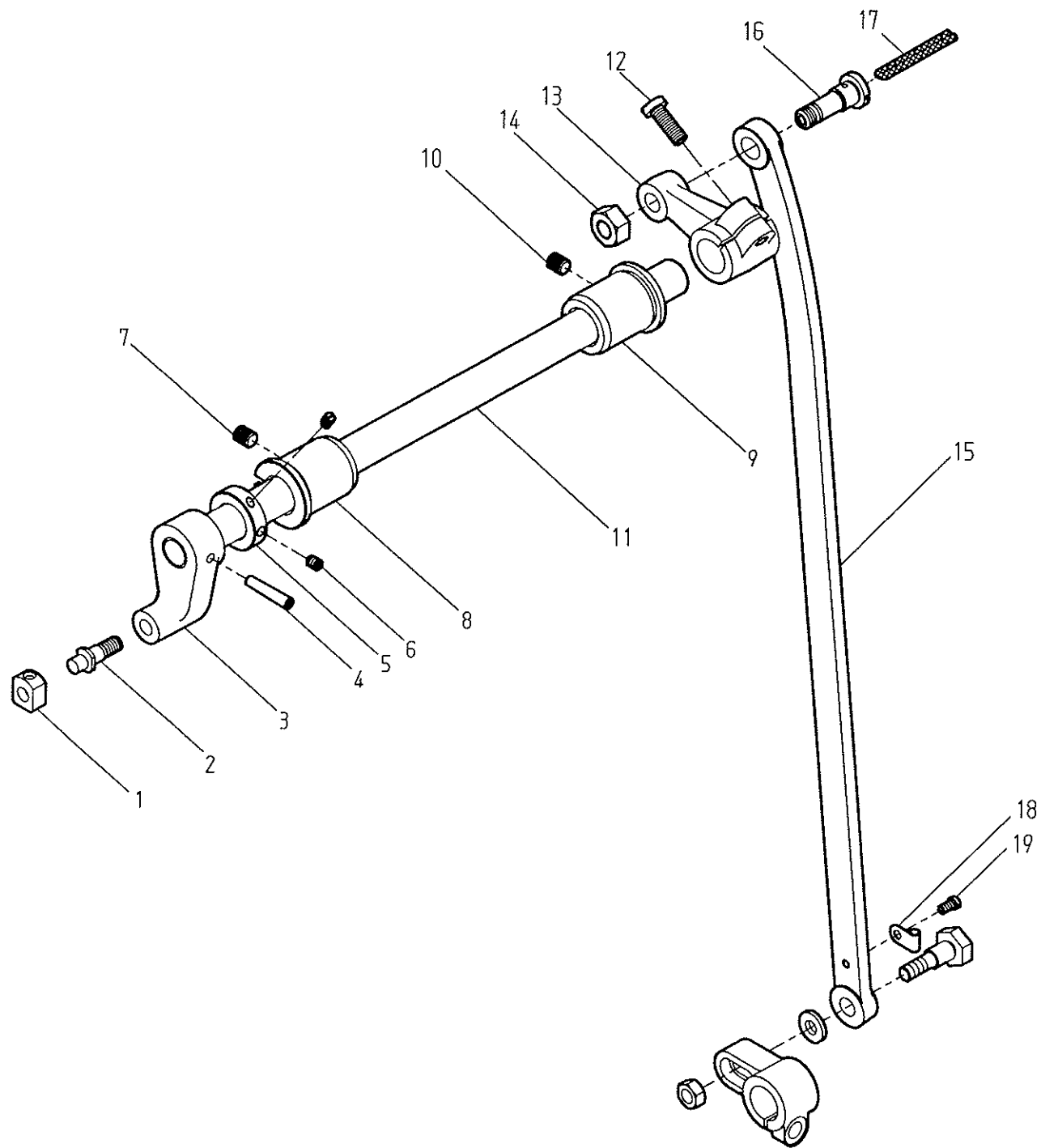


C. CS-8365M 針棒·天秤關係 NEEDLE BAR · THREAD TAKE-UP LEVER COMPONENTS

REF.No	NOTE	零件號碼 Part No.	零件名稱 Name of Part	件數 Q'TY	備註 Remarks
1		XA300080	油線 ----- Oil Wick -----	1	
2		EJ1091-0A	針柱座固定軸 --- Needle Bar Guide Bracket Stud ---	1	
3		ZSB20009	螺絲 ----- Screw 5/16-28*10 -----	1	
4		ZSA15017	螺絲 ----- Screw 15/64-28*8.5 -----	1	
5		C1061-0A	天秤固定銷 --- Thread Take-up Lever Support Stud ---	1	
6		4400190100	天秤 ----- Thread Take-up Lever -----	1	
7		A1062-0A	天秤滑塊 --- Thread Take-up Slide Brock ---	1	
8		ZSA15010	螺絲 ----- Screw 15/64-28*15 -----	1	
9		A1107-0A	凸輪固定銷 --- Needle Bar Crank Pin ---	1	
10		XA300065	油線 ----- Oil Wick -----	1	
11		EJ1080-0A	連接桿 --- Connecting Link ---	1	
12		8370270105	針柱台(套) --- Needle Bar Guide Bracket Asm. ---	1	
13		EJ1090-0A	針柱台 --- Needle Bar Guide Bracket ---	(1)	
14		ZSC06005	螺絲 ----- Screw 3/32-56*3.9 -----	(6)	
15		EJ1081-0A	針棒連結器滑板 --- Spacer ---	(2)	
16		XA300040	油線 ----- Oil Wick -----	(1)	
17		EJ1074-0A	針棒固定軸 --- Needle Bar Holder ---	(1)	
18		ZSB09032	螺絲 ----- Screw 9/64-40*8.5 -----	(1)	
19		EJ1070-0A	針棒 --- Needle Bar ---	(1)	
20		ZSB06002	螺絲 ----- Screw 3/32-56*2.5 -----	(1)	
21		ZSB08002	螺絲 ----- Screw 1/8-44*4.5 -----	(1)	
22		F1076-0A	線掛 --- Needle Bar Thread Guide ---	(1)	
23		EJ1282-0A	中腳押棒 --- Vibrating Presser Bar ---	(1)	
24		XA300200	油線 ----- Oil Wick -----	(1)	
25		ZSD11001	螺絲 ----- Screw 11/64-40*9.5 -----	1	
26		EJ1092-0A	針柱座定位板 --- Needle Bar Guide ---	1	
27		WA059002	平墊圈 --- Washer ---	1	
28		B1283-0A	押腳舉升連桿 --- Vibrating Presser Bar Link ---	1	
29		8370143700	押腳舉升連桿案内 --- Vibrating Presser Bar Guide ---	1	
30		ZSB11010	螺絲 ----- Screw 11/64-40*14 -----	2	
31		EJ1281-0A	彈簧 --- Spring ---	1	
32		EJ1280-0A	彈簧導桿 --- Vibrating Presser Spring Guide ---	1	
33		8370151000	內壓腳 --- Walking Foot ---	1	
34		ZSB11009	螺絲 ----- Screw 11/64-40*5 -----	1	
35		XA300027	油線 ----- Oil Wick -----	1	
36		INDP × 17-22	針 ----- Needle -----	1	



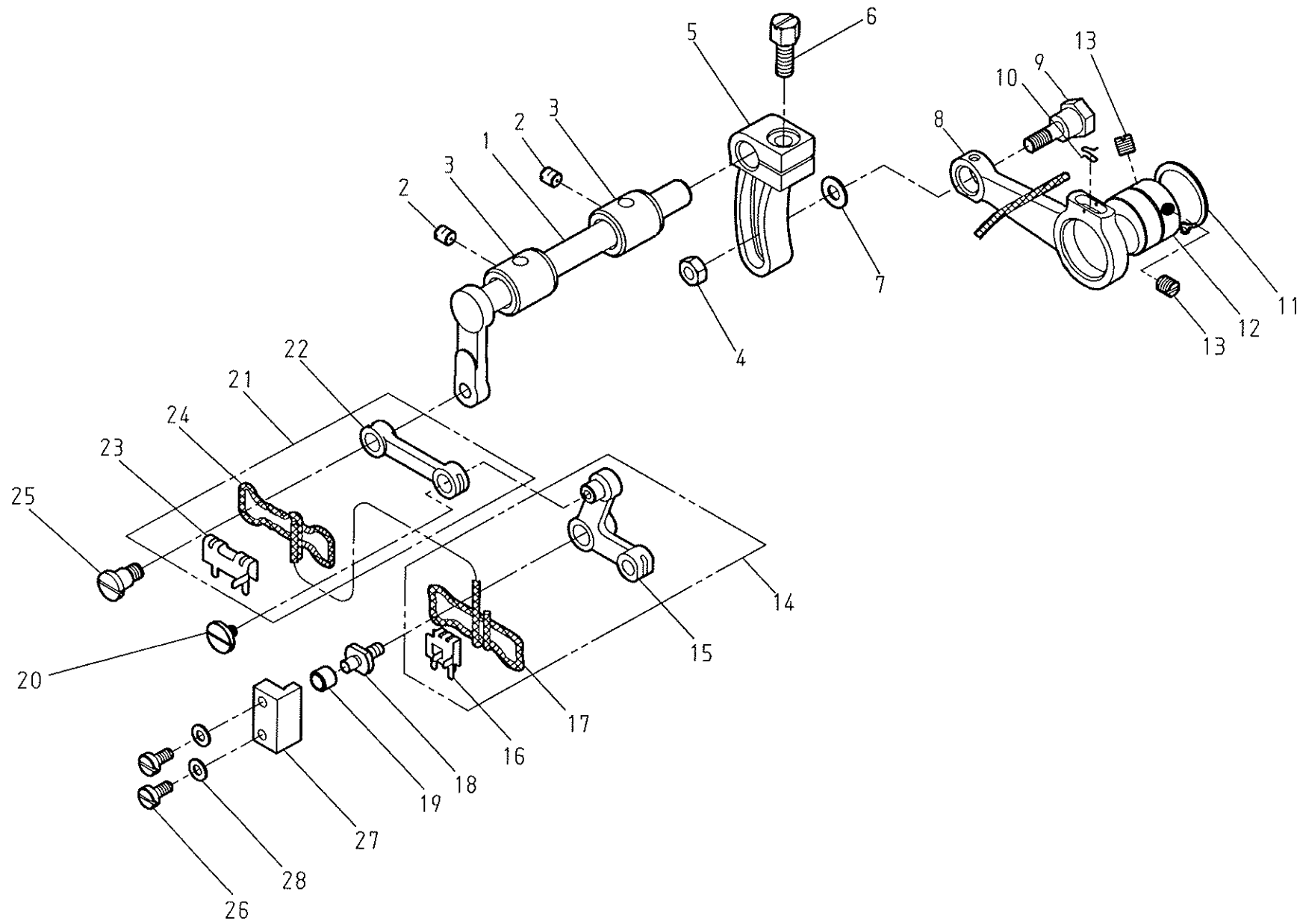
D. CS-8365M 針棒搖擺關係 NEEDLE BAR ROCKING MOTION MECHANISM COMPONENTS



D. CS-8365M 針棒搖擺關係 NEEDLE BAR ROCKING MOTION MECHANISM COMPONENTS

REF.No	NOTE	零件號碼 Part No.	零件名稱 Name of Part	件數 Q'TY	備註 Remarks
1		EJ1334-0A	角駒 ----- Square Block -----	1	
2		EJ1333-0A	角駒軸 ----- Crank Pin -----	1	
3		EJ1332-0A	擺動臂 ----- Needle Bar Vibrating Crank (Left) -----	1	
4		YB040025	推拔銷 ----- Taper Pin $\phi$ 4*25*1/5 -----	1	
5		EJ1344-0A	定環 ----- Coller -----	1	
6		ZSA11005	螺絲 ----- Screw 11/64-40*5.5 -----	2	
7		ZSA16033	螺絲 ----- Screw 1/4-24*7.5 -----	1	
8		EJ1341-0A	擺動臂軸套管 --- Needle Bar Vibrating Shaft Bushing (Front)	1	
9		EJ1343-0A	擺動臂軸套管 --- Needle Bar Vibrating Shaft Bushing (Rear)	1	
10		ZSA16033	螺絲 ----- Screw 1/4-24*7.5 -----	1	
11		EJ1331-0A	擺動臂軸 ----- Needle Bar Vibrating Shaft -----	1	
12		ZSB16004	螺絲 ----- Screw 1/4-24*16 -----	1	
13		8370271000	擺動臂 ----- Needle Bar Vibrating Crank (Right) -----	1	
14		ZSL20004	螺帽 ----- Nut 5/16-24 -----	1	
15		83652711P0	連接桿 ----- Connecting Rod -----	1	
16		EJ1337-0A	螺絲 ----- Hinge Screw -----	1	
17		XA300085	油線 ----- Oil Wick -----	1	
18		C1375-2A	油線支持片 ----- Holder -----	1	
19		ZSB09018	螺絲 ----- Screw 9/64-40*6.5 -----	1	

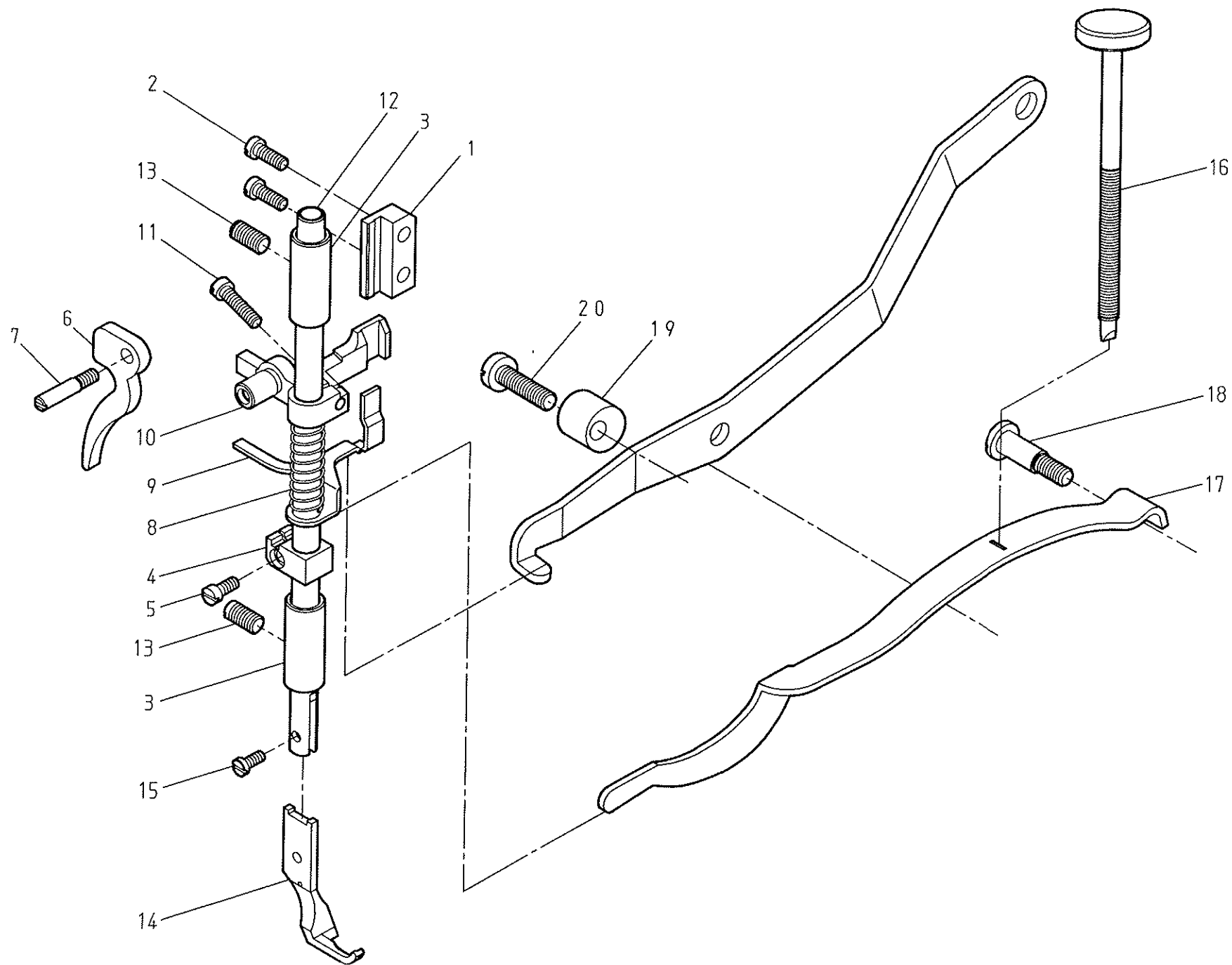
E. CS-8365M 上部送料関係 UPPER FEED MECHANISM COMPONENTS



E. CS-8365M 上部送料關係 UPPER FEED MECHANISM COMPONENTS

REF.No	NOTE	零件號碼 Part No.	零件名稱 Name of Part	件數 Q'TY	備註 Remarks
1		EJ1290-0A	作動軸 ----- Feed Lifting Rock Shaft -----	1	
2		ZSA15028	螺絲 ----- Screw 15/64-28*7 -----	2	
3		E1291-0A	套管 ----- Bushing -----	2	
4		ZML06001	螺帽 ----- Nut M6*1 -----	1	
5		EJ1295-0A	舉升曲柄連桿 --- Lever (Right) -----	1	
6		ZSD16007	螺絲 ----- Screw 1/4-28*16.5 -----	1	
7		WA069011	平墊圈 ----- Washer -----	1	
8		E1297-0A	連接桿 ----- Connecting Rod -----	1	
9		ZMG06003	螺絲 ----- Hinge Screw -----	1	
10		A1130-0A	彈簧 ----- Spring -----	1	
11		RB200250	軸用C扣環 25 -- Retaining Rings-C Type 25 -----	1	
12		E1298-0A	偏心輪 ----- Eccentric -----	1	
13		ZSH16001	螺絲 ----- Screw 1/4-40*6 -----	2	
14		8370143605	舉升支臂連桿 (套) Bell Crank Asm. -----	1	
15		EJ1286-0A	舉升支臂連桿 --- Bell Crank -----	(1)	
16		8370353200	油線掛架 ----- Holder -----	(1)	
17		XA300140	油線 ----- Oil Wick -----	(1)	
18		EJ1283-0A	舉升連桿支軸 --- Support Shaft -----	1	
19		EJ1284-0A	舉升曲臂案内珠 --- Roller -----	1	
20		ZSB11069	螺絲 ----- Screw 11/64-40*6 -----	1	
21		8370145105	連接桿 (套) --- Link Asm. -----	1	
22		EJ1287-0A	連接桿 (左) --- Link (Left) -----	(1)	
23		8370353100	油線掛架 ----- Holder -----	(1)	
24		XA300130	油線 ----- Oil Wick -----	(1)	
25		ZSG16018	螺絲 ----- Hinge Screw -----	1	
26		ZSB11026	螺絲 ----- Screw 11/64-40*10 -----	2	
27		EJ1278-0A	案内板 ----- Bell Crank Guide -----	1	
28		WA049006	平墊圈 ----- Washer -----	2	

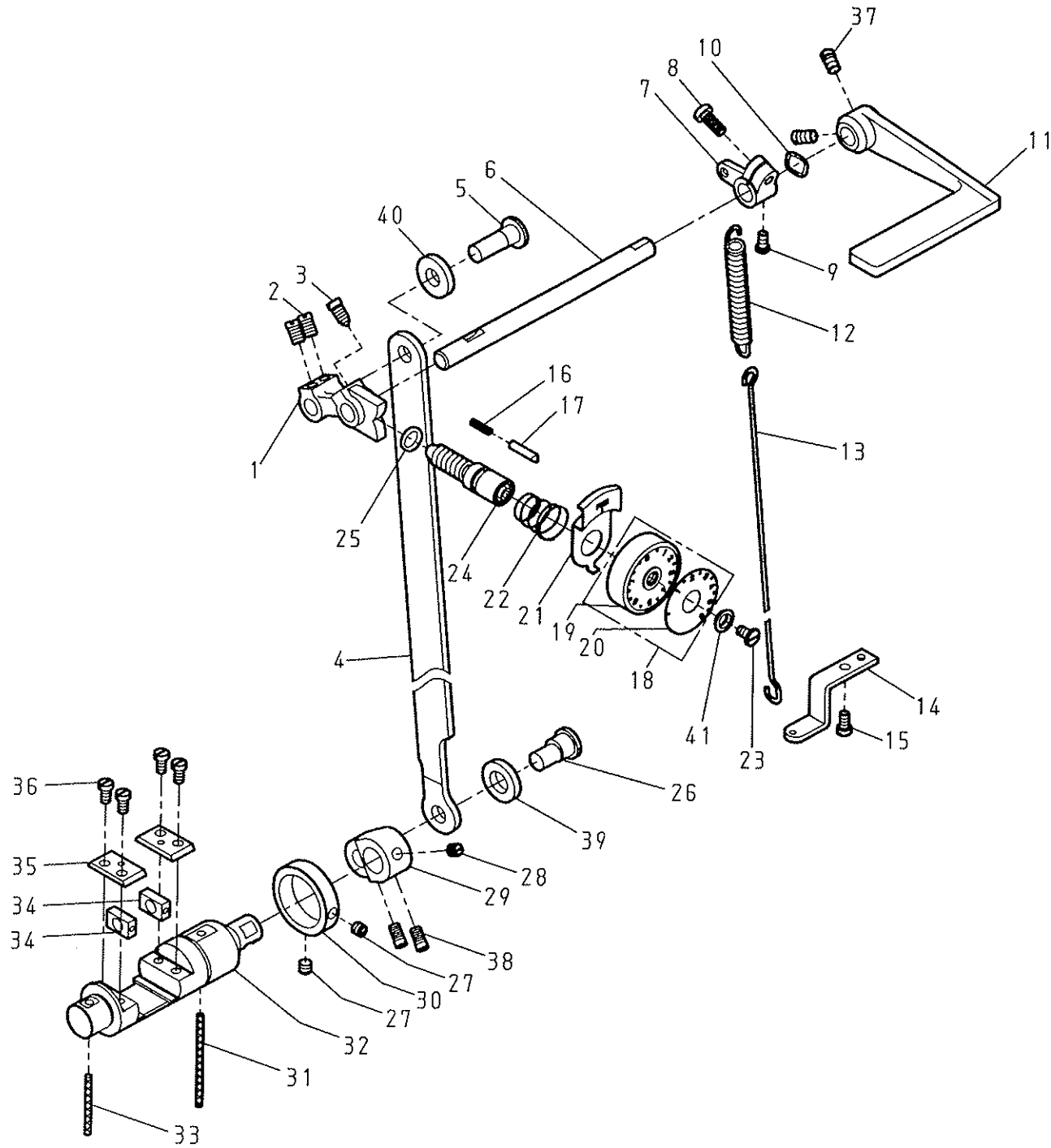
F. CS-8365M 押脚關係 PRESSURE BAR COMPONENTS



F. CS-8365M 押脚關係 PRESSURE BAR COMPONENTS

REF.No	NOTE	零件號碼 Part No.	零件名稱 Name of Part	件數 Q'TY	備註 Remarks
1		EJ1208-0A	押棒上升架案内板 Guide	1	
2		ZSB11017	螺絲 Screw 11/64-40*12	2	
3		C1183-0A	押棒套管 Bushing	2	
4		B1275-0A	押棒彈簧架 Spring Bracket	1	
5		ZSB10002	螺絲 Screw 5/32-40*9	1	
6		EJ1200-0A	押棒提升把手 Pressure Bar Lifter	1	
7		ZSK11036	螺絲 Screw 11/64-40*24.5	1	
8		B1274-0A	彈簧 Spring	1	
9		EJ1273-0A	壓縮滑座 Thread Releasing Plate	1	
10		EJ1272-0A	押棒上升器 Bracket	1	
11		ZSB11083	螺絲 Screw 11/64-40*18	1	
12		EJ1180-0A	押棒 Presser Bar	1	
13		ZSA16034	螺絲 Screw 1/4-24*14	2	
14		8370153000	外壓脚 Presser Foot	1	
15		ZSB09028	螺絲 Screw 9/64-40*8.7	1	
16		ZSK16017	螺絲 Screw 1/4-28*104	1	
17		EJ1300-0A	板彈簧 Lever Spring	1	
18		ZSG16003	螺絲 Hinge Screw	1	
19		8370341100	固定銷 Stopper	1	
20		ZSB16011	螺絲 Screw 1/4-24*25	1	

G. CS-8365M 縫目調整器關係 STITCH REGULATOR MECHANISM COMPONENTS

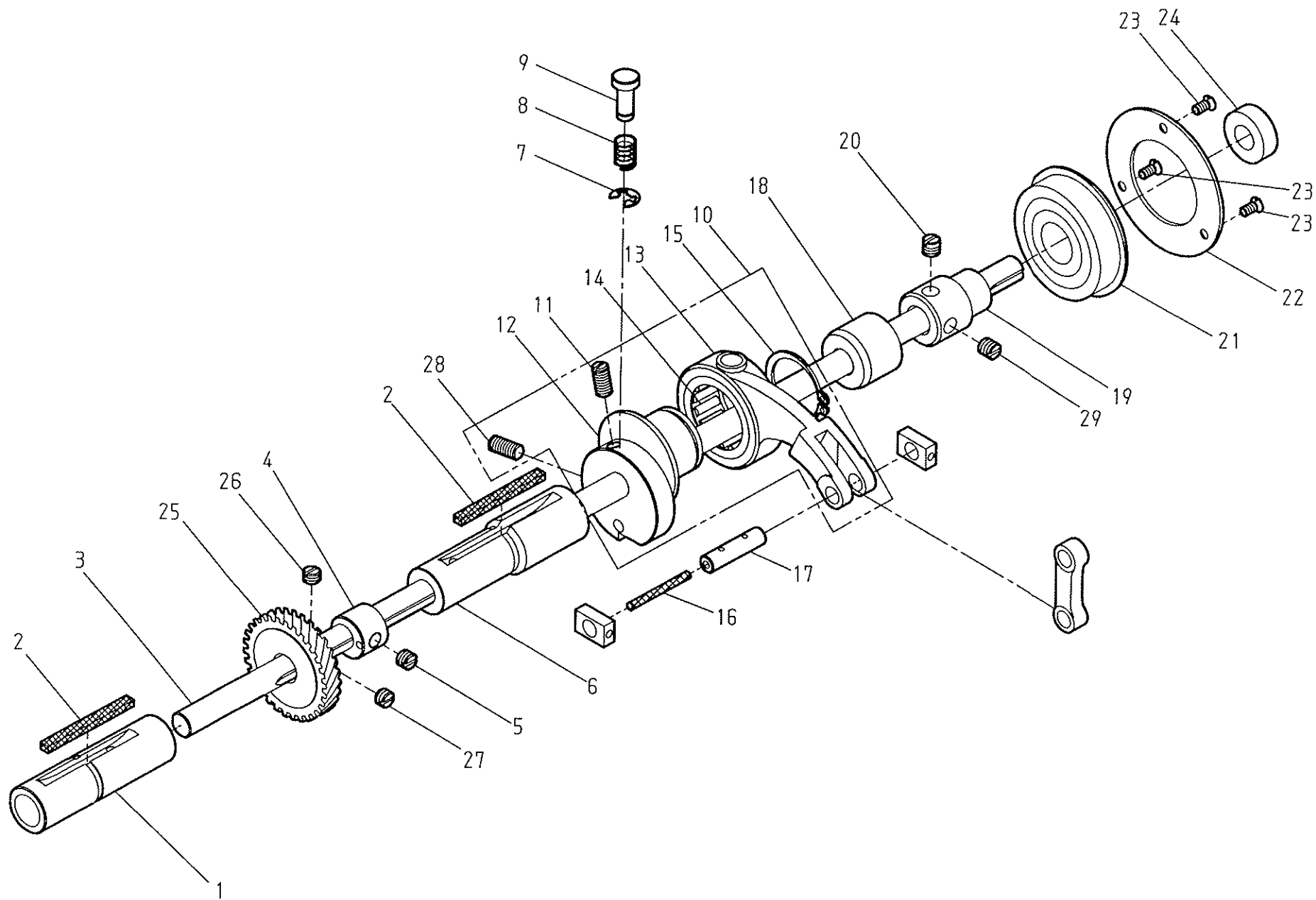


G. CS-8365M 縫目調整器關係 STITCH REGULATOR MECHANISM COMPONENTS

REF.No	NOTE	零件號碼 Part No.	零件名稱	Name of Part	件數 Q'TY	備註 Remarks
1		EJ1150-0A	三又	Feed Regulator Cam	1	
2		ZSB15006	螺絲	Screw 15/64-28*8.5	2	
3		ZSB15037	螺絲	Screw 15/64-28*11.5	1	
4		83651651P0	連接桿	Link	1	
5		EJ4157-0A	倒縫連結軸	Pin	1	
6		EJ1161-0A	倒縫軸	Reverse Stitch Shaft	1	
7		EJ1163-0A	倒縫軸腕	Arm	1	
8		ZSB15009	螺絲	Screw 15/64-28*13	1	
9		ZSB11014	螺絲	Screw 11/64-40*8.5	1	
10		WG000010	彈簧墊圈	Spring Washer	1	
11		EJ1160-0A	倒縫桿	Reverse Sewing Lever	1	
12		EJ1166-0A	彈簧	Spring	1	
13		83651660P0	彈簧掛	Spring Hook	1	
14		EJ4115-0A	支持板	Guide Plate	1	
15		ZSB11011	螺絲	Screw 11/64-40*9	1	
16		E1158-0A	彈簧	Spring	1	
17		E1171-2A	定位銷	Pin	1	
18		8370164005	刻度盤(套)	Dial Asm.	1	
19		E1172-2A	刻度盤	Dial	(1)	
20		4400164100	刻度板	Feed Scale Plate	(1)	
21		E1173-2A	操作板	Stoper Pin Releasing Lever	1	
22		E1174-2A	彈簧	Spring	1	
23		ZSB12017	螺絲	Screw 3/16-28*15	1	
24		EJ1170-0A	方牙棒	Feed Regulating Screw	1	
25		OP00100A	O形環 10	O-ring $\phi$ 10	1	
26		EJ1155-0A	連結軸	Eccentric Shaft	1	
27		ZSA15025	螺絲	Screw 15/64-28*6	2	
28		ZSA15025	螺絲	Screw 15/64-28*6	1	
29		EJ4156-0A	倒縫軸連結腕	Reverse Sewing Crank	1	
30		EJ4154-0A	固定環	Collar	1	
31		XA300055	油線	Oil Wick	1	
32		8370167000	倒退固定軸	Reverse Block	1	
33		XA300035	油線	Oil Wick	1	
34		EJ4152-0A	滑駒	Square Block	2	
35		EJ4153-0A	滑塊固定板	Guide Plate	2	
36		ZSB11028	螺絲	Screw 11/64-40*10	4	
37		ZSB15006	螺絲	Screw 15/64-28*8.5	2	
38		ZSB15006	螺絲	Screw 15/64-28*8.5	2	
39		WH212004	墊圈	Spacer	1	
40		WH209003	墊圈	Spacer	1	
41		C1174-0A	墊片	Guide	1	



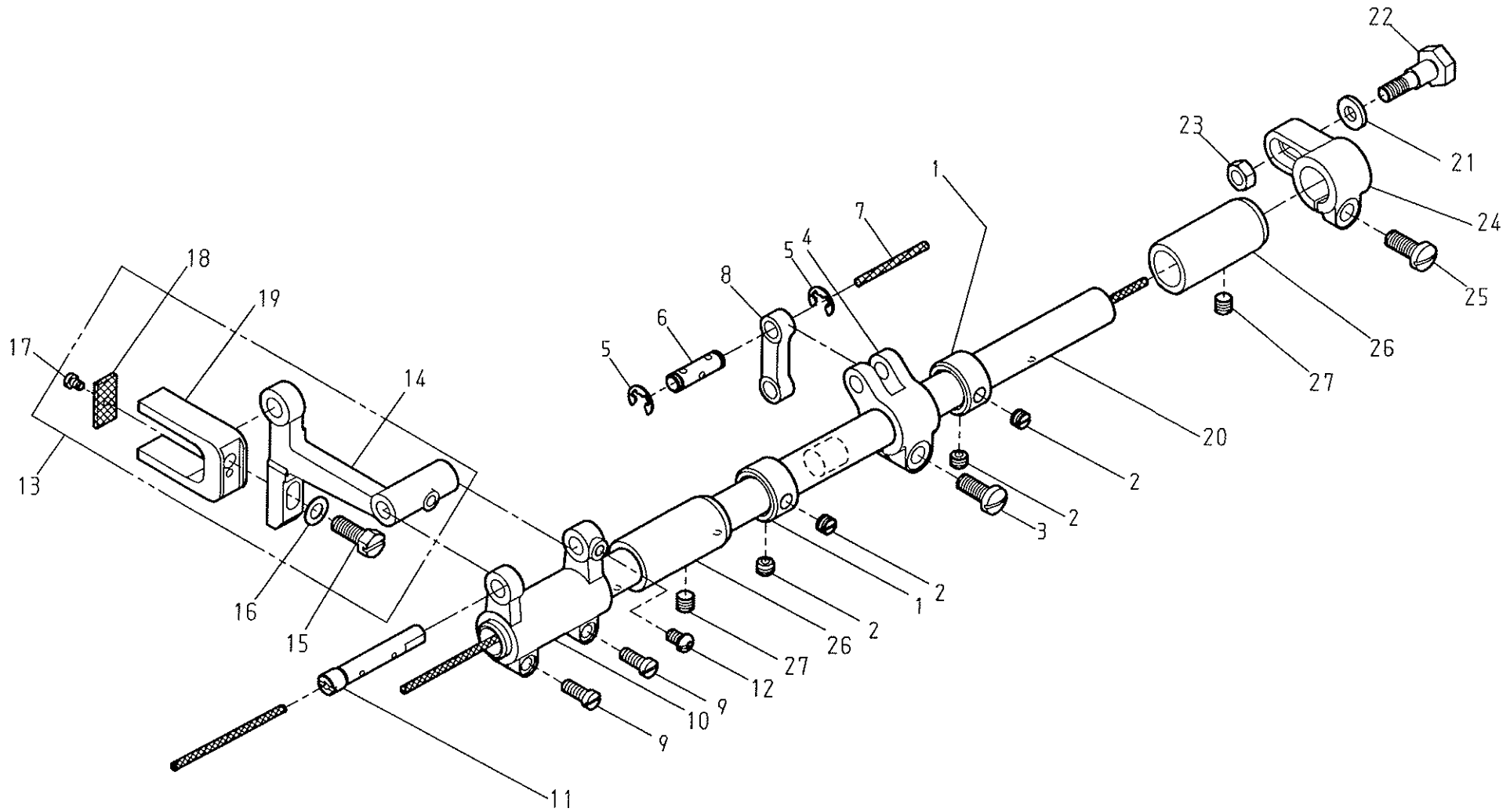
H. CS-8365M 下軸・送料関係 LOWER SHAFT & FEED MECHANISM COMPONENTS (1/3)



H. CS-8365M 下軸・送料關係 LOWER SHAFT & FEED MECHANISM COMPONENTS (1/3)

REF.No	NOTE	零件號碼 Part No.	零件名稱 Name of Part	件數 Q'TY	備註 Remarks
1		8370160600	套管 --- Bushing (Lower Shaft Left-side) ---	1	
2		XB304001	油棉 --- Felt ---	2	
3		8370180100	下軸 --- Lower Shaft ---	1	
4		C4015-0A	送料土台凸輪 --- Feed Eccentric Cam ---	1	
5		ZSA16021	螺絲 --- Screw 1/4-40*5 ---	1	
6		EJ4012-0A	套管 --- Bushing (Lower Shaft Right-side) ---	1	
7		RE000050	E扣環 5 --- Retaining Rings-E Type 5 ---	1	
8		EJ4121-0A	彈簧 --- Spring ---	1	
9		EJ4120-0A	銷 --- Push Button ---	1	
10		8370160905	下軸連桿・凸輪 (套) Feed Regulator Asm. ---	1	
11		ZSH15002	螺絲 --- Screw 15/64-28*8 ---	(1)	
12		EJ4016-0A	下軸凸輪 --- Feed Eccentric ---	(1)	
13		EJ4017-0A	下軸連桿 --- Feed Connecting Rod ---	(1)	
14		BNTA2616Z	軸承 --- Needle Bearing ---	(1)	
15		RB200260	軸用C扣環 26 --- Retaining Rings-C Type 26 ---	(1)	
16		XA300030	油線 --- Oil Wick ---	1	
17		EJ4151-0A	滑駒鎖 --- Shaft ---	1	
18		8370180300	套管 --- Bushing (Lower Shaft Middle-side) ---	1	
19		EJ4060-0A	套管 --- Bushing ---	1	
20		ZSA16025	螺絲 --- Screw 1/4-40*6 ---	1	
21		BB6203ZZNR	滾珠軸承 --- Ball Bearing ---	1	
22		EJ4061-0A	滾珠軸承压板 --- Bearing Holder ---	1	
23		ZSC09006	螺絲 --- Screw 9/64-40*8 ---	3	
24		WA100013	墊圈 --- Spacer ---	1	
25		C4026-0A	斜齒輪 (大) --- Spiral Gear (Large) ---	1	
26		ZSA16010	螺絲 --- Screw 1/4-40*4.5 ---	2	
27		ZSA16020	螺絲 --- Screw 1/4-40*5.5 ---	1	
28		ZSH15006	螺絲 --- Screw 15/64-28*15 ---	(1)	
29		ZSA16007	螺絲 --- Screw 1/4-40*6 ---	1	

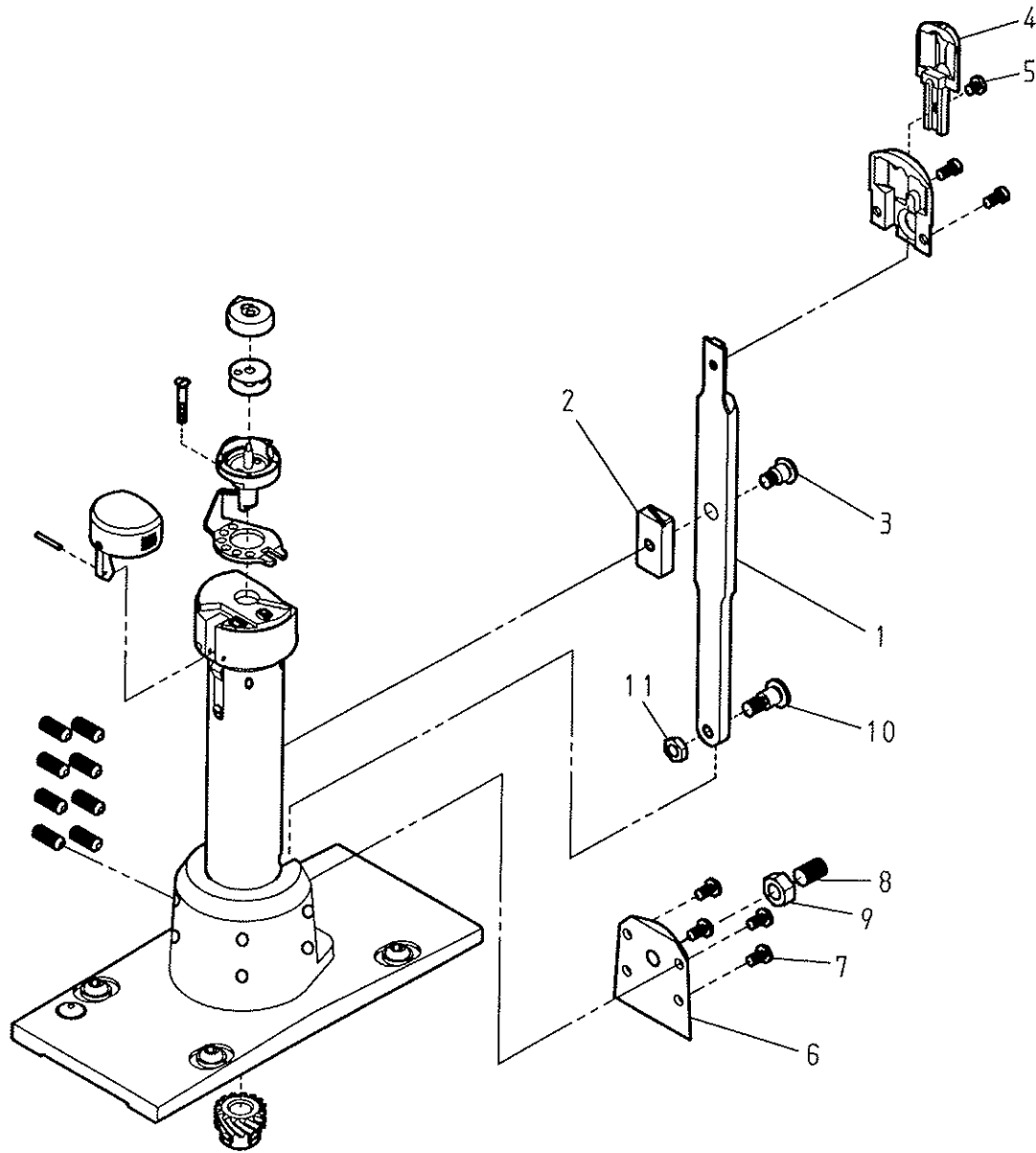
I. CS-8365M 下軸・送料関係 LOWER SHAFT & FEED MECHANISM COMPONENTS (2/3)



I. CS-8365M 下軸・送料關係 LOWER SHAFT & FEED MECHANISM COMPONENTS (2/3)

REF.No	NOTE	零件號碼 Part No.	零件名稱 Name of Part	件數 Q'TY	備註 Remarks
1		EJ4044-0A	固定環 ----- Collar -----	2	
2		ZSA16010	螺絲 ----- Screw 1/4-40*4.5 -----	4	
3		ZSB16004	螺絲 ----- Screw 1/4-24*16 -----	1	
4		EJ4048-0A	針送料桿 ----- Feed Connection Crank (Middle) -----	1	
5		RE000060	E扣環 6 ----- Retaining Rings-E Type 6 -----	2	
6		EJ4047-0A	連接板鎖 ----- Shaft -----	1	
7		XA300030	油線 ----- Oil Wick -----	1	
8		EJ4018-0A	連接桿 ----- Link -----	1	
9		ZSB12015	螺絲 ----- Screw 3/16-28*12 -----	2	
10		EJ4045-1A	水平送齒腕 ----- Feed Connection Crank (Left) -----	1	
11		EJ4051-2A	送料土台軸 ----- Feed Bar Shaft -----	1	
12		ZSB11029	螺絲 ----- Screw 11/64-40*7 -----	1	
13		8370160105	送料土台(套) ----- Feed Bar Asm. -----	1	
14		8370160100	送料土台 ----- Feed Bar -----	(1)	
15		ZSD15002	螺絲 ----- Screw 15/64-28*15.5 -----	(1)	
16		WA069003	平墊圈 ----- Washer -----	(1)	
17		ZSB08010	螺絲 ----- Screw 1/8-44*4.6 -----	(1)	
18		XB312002	油棉 ----- Felt -----	(1)	
19		EJ4055-0A	送料土台二又 ----- Feed Bar Forked Connection -----	(1)	
20		EJ4040-0A	水平伝動軸 ----- Feed Rock Shaft -----	1	
21		WH206001	平墊圈 ----- Washer -----	1	
22		ZMG06013	螺絲 ----- Hinge Screw -----	1	
23		ZML06005	螺帽 ----- Nut M6*0.75 -----	1	
24		EJ4046-0A	針送料桿 ----- Feed Connection Crank (Right) -----	1	
25		ZSB16004	螺絲 ----- Screw 1/4-24*16 -----	1	
26		EJ4041-0A	套筒 ----- Bushing -----	2	
27		ZSA16034	螺絲 ----- Screw 1/4-24*14 -----	2	

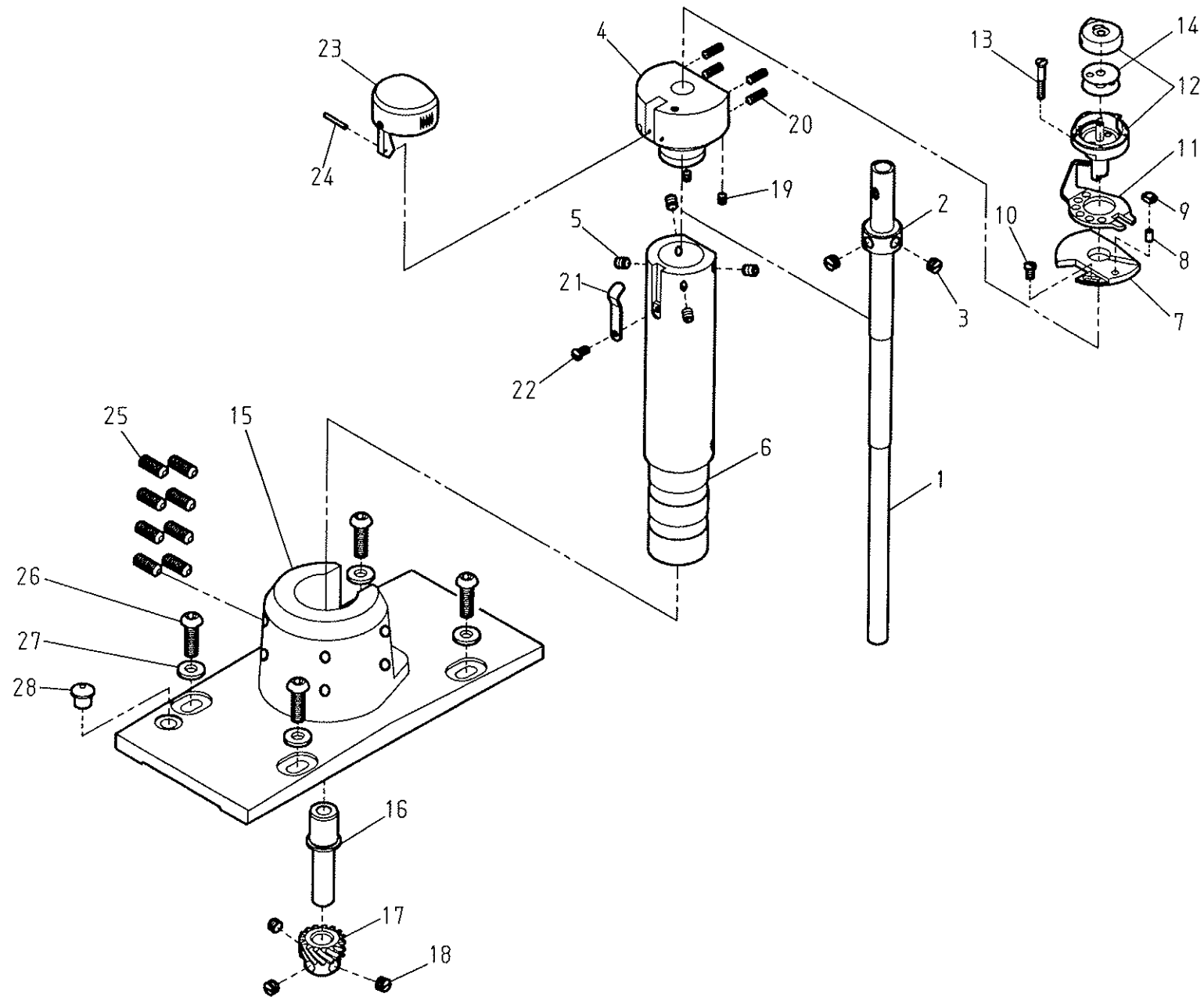
J. CS-8365M 下軸・送料関係 LOWER SHAFT & FEED MECHANISM COMPONENTS (3/3)



J. CS-8365M 下軸・送料關係 LOWER SHAFT & FEED MECHANISM COMPONENTS (3/3)

REF.No	NOTE	零件號碼 Part No.	零件名稱	Name of Part	件數 Q'TY	備註 Remarks
1		83651625P0	送齒板	Feed Link	1	
2		4400162600	狗齒板滑塊	Slide Block	1	
3		ZSG15059	螺絲	Hinge Screw	1	
4		4400161400	單針狗齒	Feed Dog	1	
5		ZSB11093	螺絲	Screw 11/64-40*4.3	1	
6		4400187100	護蓋	Support Plate	1	
7		ZSB11032	螺絲	Screw 11/64-40*7.8	4	
8		ZMA08002	螺絲	Screw M8*1.25*16	1	
9		ZML08001	螺帽	Nut M8*1.25	1	
10		ZSG16027	螺絲	Hinge Screw	1	
11		ZSL16010	螺帽	Nut 1/4-24	1	

K. CS-8365M 釜軸座關係 HOOK SADDLE MECHANISM COMPONENTS

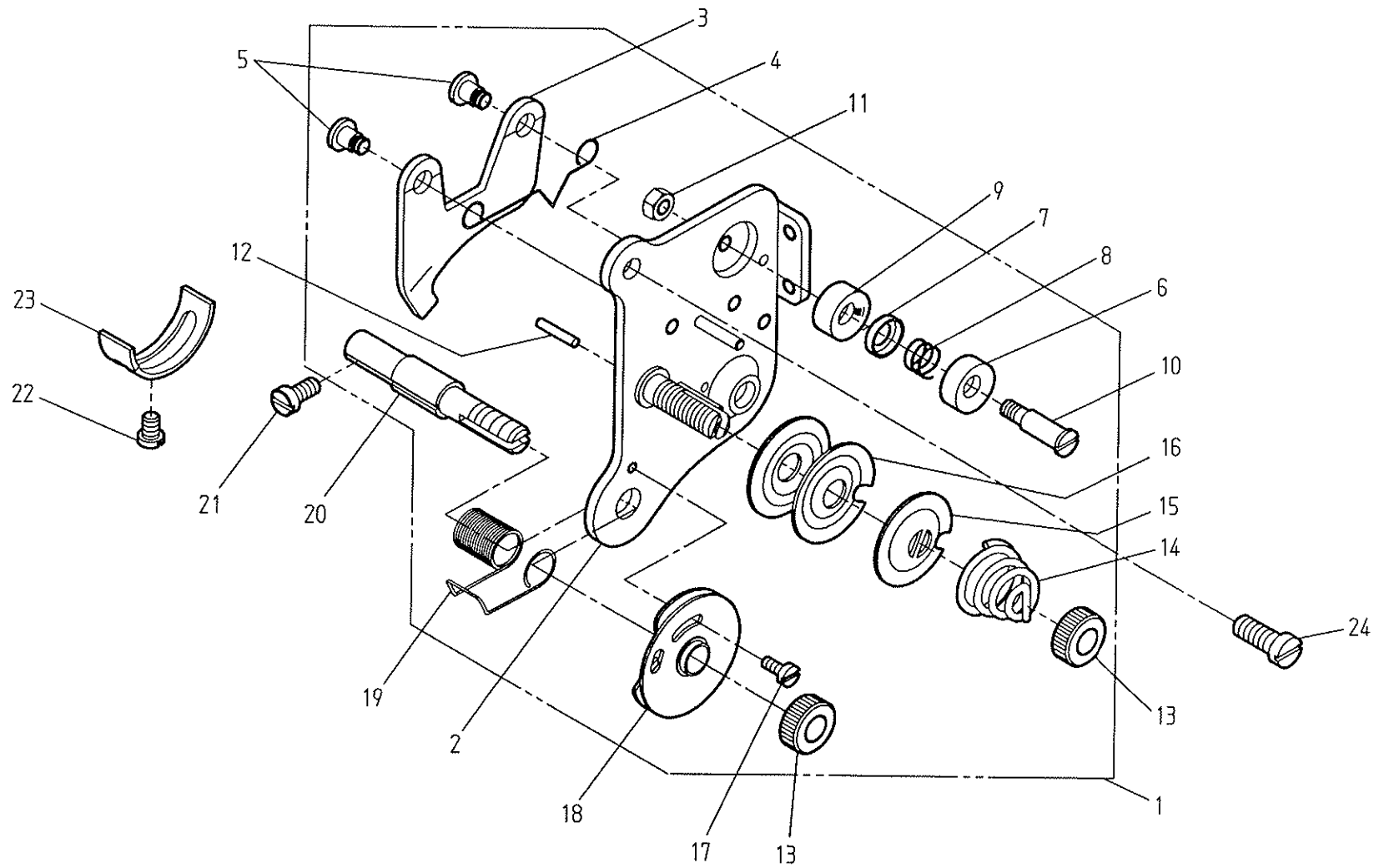


K. CS-8365M 釜軸座關係 HOOK SADDLE MECHANISM COMPONENTS

REF.No	NOTE	零件號碼 Part No.	零件名稱 Name of Part	件數 Q'TY	備註 Remarks
1		83651863P0	釜軸 ----- Hook Shaft -----	1	
2		LG4014-0A	定環 ----- Coller -----	1	
3		ZSH16005	螺絲 ----- Screw 1/4-40*4.5 -----	2	
4		4400110600	釜台 ----- Hook Saddle -----	1	
5		ZMH05002	螺絲 ----- Screw M5*0.8*6 -----	4	
6		83651860P0	釜台支持 ----- Hook Saddle Support -----	1	
7		4400186900	牛角連接器 ----- Openner Link -----	1	
8		YA032057	固定銷 ----- Pin -----	1	
9		B6017-0A	牛角導塊 ----- Openner Slide Block -----	1	
10		ZSB09029	螺絲 ----- Screw 9/64-40*6 -----	1	
11		4400186800	牛角 ----- Openner -----	1	
12		4400185100	梭頭 (套) ----- Hook Asm. -----	1	
13		ZSC09025	螺絲 ----- Screw 9/64-36*26 -----	1	
14		A7006-0A	梭孔 ----- Bobbin -----	1	
15		4400186100	釜台支持座 ----- Hook Saddle Support Base -----	1	
16		4400188100	套筒 ----- Bushing -----	1	
17		C4025-0A	斜齒輪 (小) ----- Spiral Gear (Small) -----	1	
18		ZSA16010	螺絲 ----- Screw 1/4-40*4.5 -----	3	
19		ZSA09010	螺絲 ----- Screw 9/64-40*6 -----	2	
20		ZSA09006	螺絲 ----- Screw 9/64-40*10 -----	4	
21		4400183700	彈簧板 ----- Spring Plate -----	1	
22		ZSB08036	螺絲 ----- Screw 1/8-40*3.5 -----	1	
23		4400183604	釜蓋 (套) ----- Hook Cover Asm. -----	1	
24		YD020014	彈簧銷 ----- Spring Pin -----	1	
25		ZMH06009	螺絲 ----- Screw M6*1*15 -----	8	
26		ZMQ06002	螺絲 ----- Screw M6*1*20 -----	4	
27		WA060004	平墊圈 ----- Washer -----	4	
28		A1077-0A	油蓋 ----- Cap -----	1	



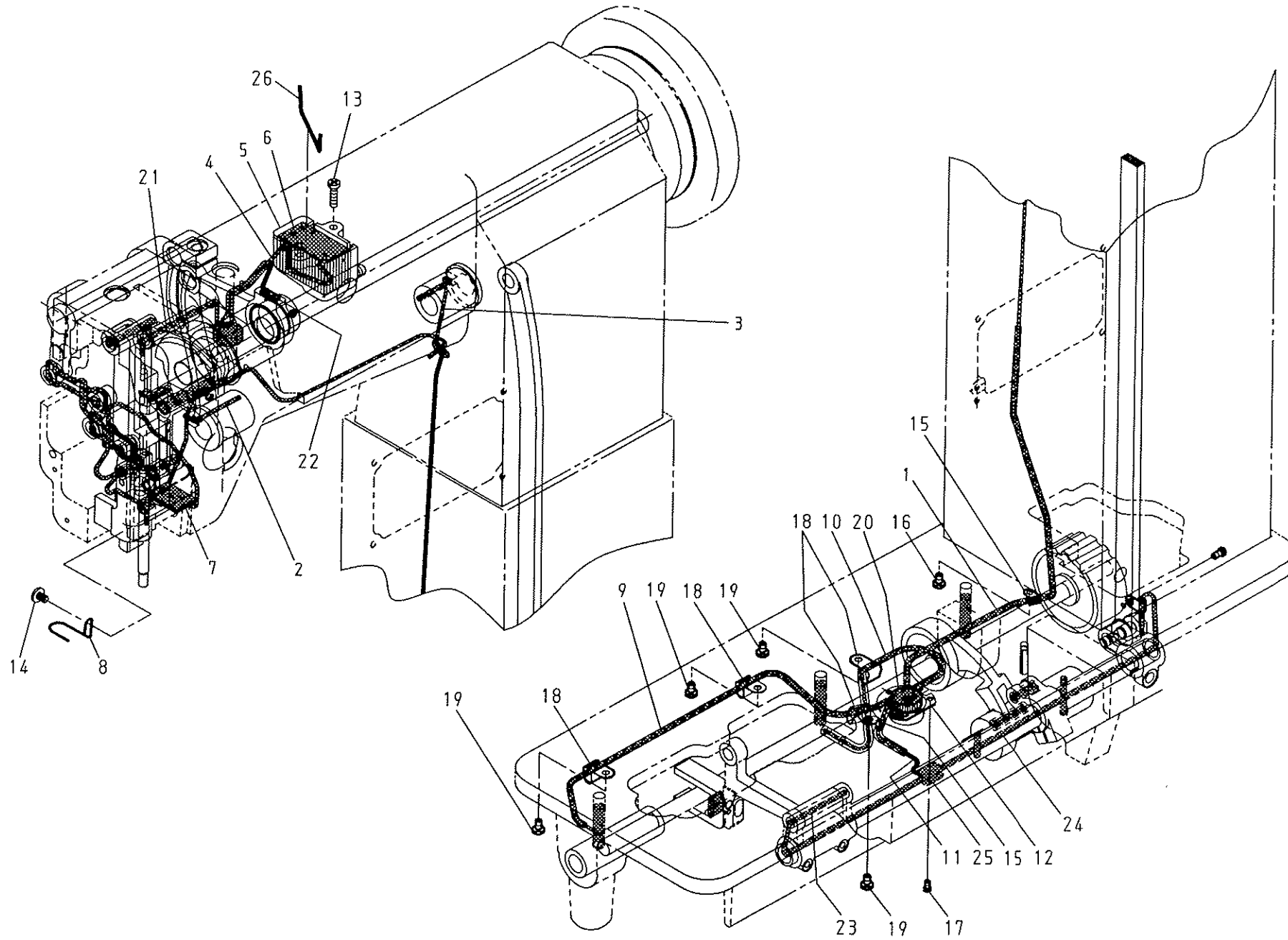
L. CS-8365M 縫線壓力調整關係 UPPER THREAD TENSION REGULATOR MECHANISM COMPONENTS



L. CS-8365M 縫線壓力調整關係 UPPER THREAD TENSION REGULATOR MECHANISM COMPONENTS

REF.No	NOTE	零件號碼 Part No.	零件名稱 Name of Part	件數 Q'TY	備註 Remarks
1		4400310505	上線壓力板(套) - Thread Tension Regulator Asm.	1	
2		A1038-0A	上線壓力板 --- Mounting Plate Asm.	(1)	
3		EJ1037-0A	彈簧板 --- Tension Releasing Plate	(1)	
4		A1036-0A	壓板彈簧 --- Tension Releasing Spring	(1)	
5		ZSG09004	螺絲 --- Hinge Screw	(2)	
6		A1030-0A	過線孔台 --- Thread Guide Disk	(1)	
7		A1031-0A	過線孔圓盤 --- Thread Guide Disk	(1)	
8		A1032-0A	導線彈簧 --- Spring	(1)	
9		A1033-0A	過線孔內蓋 --- Thread Guide Bracket	(1)	
10		ZSG09005	螺絲 --- Hinge Screw	(1)	
11		ZSL09001	螺帽 --- Nut 9/64-40	(1)	
12		EJ1028-0A	緩線鎖 --- Tension Releasing Pin (small) $\phi$ 2*12	(1)	
13		ZSN16002	螺帽 --- Tension Thumb Nut 1/4-40	(2)	
14		E1021-0A	彈簧 --- Tension Spring	(1)	
15		A1034-0A	線調整壓盤 --- Tension Regulator Presser Disk	(1)	
16		A1035-0A	壓力板 --- Tension Regulator Disk	(2)	
17		ZSB06001	螺絲 --- Screw 3/32-56*6.3	(1)	
18		A1024-1A	過線盤組 --- Tension Controller Disk Set	(1)	
19		6120310801	彈簧 --- Thread Take-up Spring	(1)	
20		EJ1026-4A	調整螺絲棒 --- Tension Stud	(1)	
21		ZSB09007	螺絲 --- Screw 9/64-40*7.5	1	
22		ZSB09005	螺絲 --- Screw 9/64-40*5	1	
23		J1041-0A	線軸彈簧調整器 --- Stopper	1	
24		ZSB11022	螺絲 --- Screw 11/64-40*7	1	

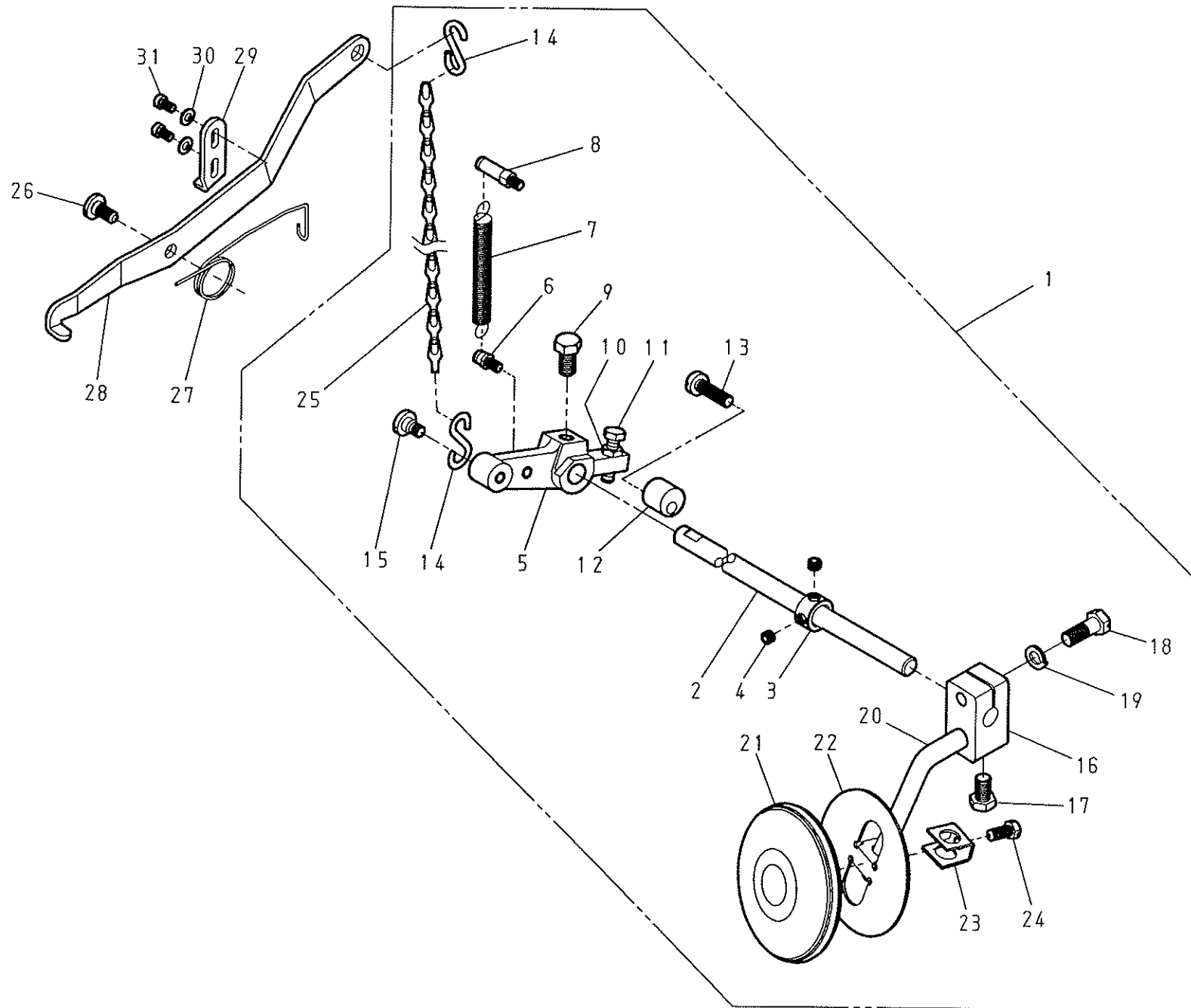
M. CS-8365M 油潤滑關係 OIL LUBRICATION MECHANISM COMPONENTS



M. CS-8365M 油潤滑關係 OIL LUBRICATION MACHANISM COMPONENTS

REF.No	NOTE	零件號碼 Part No.	零件名稱 Name of Part	件數 Q'TY	備註 Remarks
1		8370357005	油線 (套) ----- Oil Wick Asm. -----	1	
2		XA300045	油線 ----- Oil Wick -----	1	
3		XA300140	油線 ----- Oil Wick -----	1	
4		XA300160	油線 ----- Oil Wick -----	1	
5		EJ1366-0A	油溜 ----- Oil Reservoir -----	1	
6		8370355500	油棉 ----- Felt -----	1	
7		XB316001	油棉 ----- Felt -----	1	
8		EJ4175-0A	油線固定片 ----- Holder -----	1	
9		8370357105	油線 (套) ----- Oil Wick Asm. -----	1	
10		8370357205	油線 (套) ----- Oil Wick Asm. -----	1	
11		8370357305	油線 (套) ----- Oil Wick Asm. -----	1	
12		EJ6076-0A	釜軸油溜 ----- Oil Reservoir -----	1	
13		ZMB04022	螺絲 ----- Screw M4*0.7*15 -----	2	
14		ZSB11016	螺絲 ----- Screw 11/64-40*6.5 -----	1	
15		EJ4172-0A	油管固定片 ----- Holder -----	1	
16		ZSB09011	螺絲 ----- Screw 9/64-40*6.5 -----	1	
17		ZSB09018	螺絲 ----- Screw 9/64-40*6.5 -----	3	
18		EJ1375-0A	油管固定片 ----- Holder -----	4	
19		ZSB09011	螺絲 ----- Screw 9/64-40*6.5 -----	4	
20		8370355600	油棉 ----- Felt -----	1	
21		XA300240	油線 ----- Oil Wick -----	1	
22		XB206003	油棉 ----- Felt -----	1	
23		XA300150	油線 ----- Oil Wick -----	1	
24		XA300430	油線 ----- Oil Wick -----	1	
25		XB110001	油棉 ----- Felt -----	1	
26		EJ1369-0A	油棉支持片 ----- Felt Holder -----	1	

N. CS-8365M 脚弓関係 KNEE LIFTER COMPONENTS



N. CS-8365M 脚弓關係 KNEE LIFTER COMPONENTS

REF.No	NOTE	零件號碼 Part No.	零件名稱	Name of Part	件數 Q'TY	備註 Remarks
1		83657030M0	脚弓組	Knee Lever Bottom Parts Assy.	1	
2		8370341700	脚押直桿	Knee lifter shaft	(1)	
3		LG4014-0A	定環	Collar	(1)	
4		ZSH16005	螺絲	Screw 1/4-40*4.5	(2)	
5		8370341609	連接器	Knee Lifter Crank (Rear)	(1)	
6		ZMK05017	彈簧掛	Spring Hook	(1)	
7		L1312-0A	彈簧	Spring	(1)	
8		ZMK05018	彈簧掛	Spring Hook	(1)	
9		ZSD20007	螺絲	Screw 5/16-18*16	(1)	
10		ZML06002	螺帽	Nut M6*1	(1)	
11		ZMD06005	螺絲	Screw M6*1*25	(1)	
12		8370341100	固定銷	Stopper	(1)	
13		ZSB16011	螺絲	Screw 1/4-24*25	(1)	
14		4710340800	S型銷	S-plug	(2)	
15		ZSG16013	螺絲	Hinge Screw	(1)	
16		83653420P0	連接器	Knee lifter crank	(1)	
17		ZSD20004	螺絲	Screw 5/16-24*13	(1)	
18		ZSD20003	螺絲	Screw 5/16-24*21	(1)	
19		WB081001	彈簧墊圈	Spring Washer	(1)	
20		8370341900	脚押曲桿	Knee Lever Rod	(1)	
21		A7037-0A	脚弓大餅	Knee Guird	(1)	
22		A7037-1A	脚弓餅支架	Knee Plate	(1)	
23		A7036-0A	固定支架	Retainer	(1)	
24		ZSD15007	螺絲	Screw 15/64-28*14	(1)	
25		B7060-0A	鎖子	Chain (517.6mm)	(1)	
26		ZSG16005	螺絲	Hinge Screw	1	
27		EJ1301-0A	脚弓板彈簧	Twist Spring	1	
28		8370341500	押脚提桿	Knee Lifting Lever	1	
29		8370343700	固定片	Stopper	1	
30		WA059002	平墊圈	Washer	2	
31		ZSB11012	螺絲	Screw 11/64-40*8	2	

0. CS-8365M 附件 ACCESSORIES

REF.No	NOTE	零件號碼 Part No.	零件名稱	Name of Part	件數 Q'TY	備註 Remarks
1		INDPX17-22	針	Needle DP×17-22	3	
2		A7006-0A	梭孔	Bobbin	4	
3		4400911500	防振橡膠	Vibration Preventing Rubber	2	
4		A7012-1A	油壺(中)	Oiler	1	
5		A7010-0A	螺絲起子(小)	Screw Driver (small)	1	
6		A7010-1A	螺絲起子(中)	Screw Driver (middle)	1	
7		A7010-2A	螺絲起子(大)	Screw Driver (large)	1	
8		J7050-0A	線架	Cotton Stand	1	
9		A7040-0A	捲線器組	Bobbin Winder	1	
10		ZMT05001	木螺絲	Screw 4.5*22	2	
11		WA059003	平墊圈	Washer	2	
12		A7012-2A	油壺(大)	Oil Can	1	
13		8370912001	下油槽	Oil Pan	1	
14		A7012-0A	油壺(小)	Oiler	1	
15		A7011-0A	鐵釘	Nail	12	
16		4400911700	後鈕釦	Head Hinge	2	
17		J7022-0B	後鈕座	Rubber Hinge	2	
18		4400119005	枕木	Head Rest	1	
19	※	8370912505	檢出器定位銷(套)	Supporter Asm.	1	
20		8370910900	車頭蓋	Vinyl cover	1	
21		E7026-1B	橡膠墊座	Head Cushion	2	
22		TRB11×13	兩口板手	Spanner	1	
23		TRB12×14	兩口板手	Spanner	1	
24		TRB09×10	兩口板手	Spanner	1	
25		8370341501	押脚堤桿	Knee Lifting Lever	1	
26		L7070-0A	踏板組	Pedal Assy.	1	

Note (注記) ※. . . . Optional part

特別注文部品

P. CS-8365M 零件號碼與頁數對照表 NUMERICAL PARTS-LIST (1/3)

零件號碼 Part No.	頁數 Page RefNo.	零件號碼 Part No.	頁數 Page RefNo.	零件號碼 Part No.	頁數 Page RefNo.	零件號碼 Part No.	頁數 Page RefNo.
4400110600	23- 4	8370143700	7- 29	A1033-0A	25- 9	C1054-0A	3- 25
4400119005	31- 18	8370145105	11- 21	A1034-0A	25- 15	C1061-0A	7- 5
4400161400	21- 4	8370151000	7- 33	A1035-0A	25- 16	C1141-0A	3- 40
4400162600	21- 2	8370153000	13- 14	A1036-0A	25- 4	C1174-0A	15- 41
4400164100	15- 20	8370160100	19- 14	A1038-0A	25- 2	C1183-0A	13- 3
4400183604	23- 23	8370160105	19- 13	A1062-0A	7- 7	C1375-2A	9- 18
4400183700	23- 21	8370160600	17- 1	A1077-0A	3- 11	C4015-0A	17- 4
4400185100	23- 12	8370160905	17- 10	A1077-0A	23- 28	C4025-0A	23- 17
4400186100	23- 15	8370164005	15- 18	A1107-0A	7- 9	C4026-0A	17- 25
4400186800	23- 11	8370167000	15- 32	A1130-0A	11- 10	E1021-0A	25- 14
4400186900	23- 7	8370180100	17- 3	A1131-1A	3- 6	E1158-0A	15- 16
4400187100	21- 6	8370180300	17- 18	A7006-0A	23- 14	E1171-2A	15- 17
4400188100	23- 16	8370270105	7- 12	A7006-0A	31- 2	E1172-2A	15- 19
4400190100	7- 6	8370271000	9- 13	A7010-0A	31- 5	E1173-2A	15- 21
4400310505	25- 1	8370311605	3- 12	A7010-1A	31- 6	E1174-2A	15- 22
4400911500	31- 3	8370341100	13- 19	A7010-2A	31- 7	E1291-0A	11- 3
4400911700	31- 16	8370341100	29- 12	A7011-0A	31- 15	E1297-0A	11- 8
4710340800	29- 14	8370341500	29- 28	A7012-0A	31- 14	E1298-0A	11- 12
6120117400	3- 41	8370341501	31- 25	A7012-1A	31- 4	E7026-1B	31- 21
6120310801	25- 19	8370341609	29- 5	A7012-2A	31- 12	EJ1010-0A	3- 31
8365111300	3- 18	8370341700	29- 2	A7036-0A	29- 23	EJ1010-1A	3- 27
83651310P0	5- 19	8370341900	29- 20	A7037-0A	29- 21	EJ1011-0A	3- 37
83651625P0	21- 1	8370343700	29- 29	A7037-1A	29- 22	EJ1011-1A	3- 4
83651651P0	15- 4	8370353100	11- 23	A7040-0A	31- 9	EJ1012-0A	3- 7
83651660P0	15- 13	8370353200	11- 16	B1274-0A	13- 8	EJ1012-0A	3- 20
83651860P0	23- 6	8370355500	27- 6	B1275-0A	13- 4	EJ1014-0A	3- 35
83651863P0	23- 1	8370355600	27- 20	B1283-0A	7- 28	EJ1017-0A	3- 33
83652711P0	9- 15	8370357005	27- 1	B1321-0A	5- 10	EJ1026-4A	25- 20
83653420P0	29- 16	8370357105	27- 9	B1321-0A	5- 34	EJ1028-0A	25- 12
83657030M0	29- 1	8370357205	27- 10	B4131-0A	5- 27	EJ1037-0A	25- 3
8370120100	5- 9	8370357305	27- 11	B4135-0A	5- 26	EJ1043-0A	3- 36
8370120800	5- 1	8370910900	31- 20	B6017-0A	23- 9	EJ1051-0A	3- 9
8370122300	5- 17	8370912001	31- 13	B7060-0A	29- 25	EJ1055-0A	3- 13
8370131504	5- 36	8370912505	31- 19	BB6000ZZ	5- 39	EJ1056-0A	3- 14
8370131505	5- 35	A1024-1A	25- 18	BB6203ZZNR	17- 21	EJ1057-0A	3- 15
8370131700	5- 38	A1030-0A	25- 6	BB6204ZZNR	5- 14	EJ1063-0A	3- 2
8370131704	5- 37	A1031-0A	25- 7	BNTA2616Z	17- 14	EJ1070-0A	7- 19
8370143605	11- 14	A1032-0A	25- 8	C1052-0A	3- 29	EJ1074-0A	7- 17

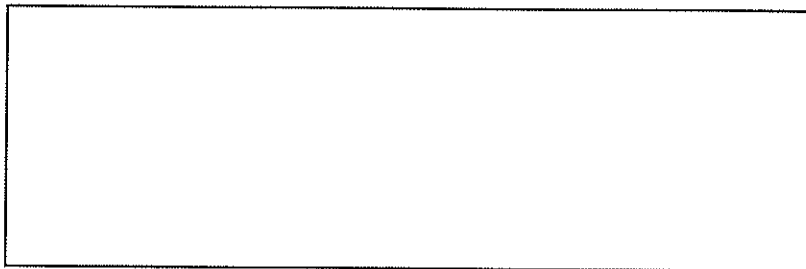


P. CS-8365M 零件號碼與頁數對照表 NUMERICAL PARTS-LIST (2/3)

零件號碼 Part No.	頁數 Page RefNo.	零件號碼 Part No.	頁數 Page RefNo.	零件號碼 Part No.	頁數 Page RefNo.	零件號碼 Part No.	頁數 Page RefNo.
EJ1080-0A	7- 11	EJ1341-0A	9- 8	EJ4175-0A	27- 8	XA300027	7- 35
EJ1081-0A	7- 15	EJ1343-0A	9- 9	EJ6076-0A	27- 12	XA300030	17- 16
EJ1090-0A	7- 13	EJ1344-0A	9- 5	F1076-0A	7- 22	XA300030	19- 7
EJ1091-0A	7- 2	EJ1366-0A	27- 5	INDPX17-22	7- 36	XA300035	15- 33
EJ1092-0A	7- 26	EJ1369-0A	27- 26	INDPX17-22	31- 1	XA300040	7- 16
EJ1101-0A	5- 6	EJ1375-0A	27- 18	J1041-0A	25- 23	XA300045	27- 2
EJ1103-0A	5- 15	EJ4012-0A	17- 6	J7022-0B	31- 17	XA300055	15- 31
EJ1150-0A	15- 1	EJ4016-0A	17- 12	J7050-0A	31- 8	XA300065	7- 10
EJ1155-0A	15- 26	EJ4017-0A	17- 13	L1312-0A	29- 7	XA300080	7- 1
EJ1160-0A	15- 11	EJ4018-0A	19- 8	L7070-0A	31- 26	XA300085	9- 17
EJ1161-0A	15- 6	EJ4040-0A	19- 20	LG4014-0A	23- 2	XA300130	11- 24
EJ1163-0A	15- 7	EJ4041-0A	19- 26	LG4014-0A	29- 3	XA300140	11- 17
EJ1166-0A	15- 12	EJ4044-0A	19- 1	OP00100A	15- 25	XA300140	27- 3
EJ1170-0A	15- 24	EJ4045-1A	19- 10	RB200250	11- 11	XA300150	27- 23
EJ1180-0A	13- 12	EJ4046-0A	19- 24	RB200260	17- 15	XA300160	27- 4
EJ1200-0A	13- 6	EJ4047-0A	19- 6	RE000050	17- 7	XA300200	7- 24
EJ1208-0A	13- 1	EJ4048-0A	19- 4	RE000060	19- 5	XA300240	27- 21
EJ1272-0A	13- 10	EJ4051-2A	19- 11	S1013-0A	3- 22	XA300430	27- 24
EJ1273-0A	13- 9	EJ4055-0A	19- 19	S1014-0A	3- 1	XB110001	27- 25
EJ1278-0A	11- 27	EJ4060-0A	17- 19	TRB09 × 10	31- 24	XB118001	5- 8
EJ1280-0A	7- 32	EJ4061-0A	17- 22	TRB11 × 13	31- 22	XB206003	27- 22
EJ1281-0A	7- 31	EJ4115-0A	15- 14	TRB12 × 14	31- 23	XB304001	17- 2
EJ1282-0A	7- 23	EJ4120-0A	17- 9	WA049003	3- 38	XB312002	19- 18
EJ1283-0A	11- 18	EJ4121-0A	17- 8	WA049006	11- 28	XB316001	27- 7
EJ1284-0A	11- 19	EJ4130-0D	5- 32	WA059002	7- 27	YA032057	23- 8
EJ1286-0A	11- 15	EJ4132-0A	5- 25	WA059002	29- 30	YB040025	9- 4
EJ1287-0A	11- 22	EJ4133-0A	5- 28	WA059003	31- 11	YC010010	5- 24
EJ1290-0A	11- 1	EJ4134-0A	5- 23	WA060004	23- 27	YD020014	23- 24
EJ1295-0A	11- 5	EJ4136-0A	5- 29	WA069001	5- 41	YD050018	3- 23
EJ1300-0A	13- 17	EJ4137-0A	5- 22	WA069003	19- 16	ZMA08002	21- 8
EJ1301-0A	29- 27	EJ4138-0A	5- 21	WA069011	11- 7	ZMB04022	27- 13
EJ1320-0B	5- 12	EJ4151-0A	17- 17	WA100013	17- 24	ZMD06005	29- 11
EJ1323-0A	5- 20	EJ4152-0A	15- 34	WARN000500	3- 24	ZMG06003	11- 9
EJ1331-0A	9- 11	EJ4153-0A	15- 35	WB081001	29- 19	ZMG06013	19- 22
EJ1332-0A	9- 3	EJ4154-0A	15- 30	WG000010	15- 10	ZMH05002	23- 5
EJ1333-0A	9- 2	EJ4156-0A	15- 29	WH206001	19- 21	ZMH06009	23- 25
EJ1334-0A	9- 1	EJ4157-0A	15- 5	WH209003	15- 40	ZMK05017	29- 6
EJ1337-0A	9- 16	EJ4172-0A	27- 15	WH212004	15- 39	ZMK05018	29- 8

P. CS-8365M 零件號碼與頁數對照表 NUMERICAL PARTS-LIST (3/3)

零件號碼	頁數	零件號碼	頁數	零件號碼	頁數	零件號碼	頁數
Part No.	Page RefNo.	Part No.	Page RefNo.	Part No.	Page RefNo.	Part No.	Page RefNo.
ZML06001	11- 4	ZSB09011	27- 16	ZSB15006	15- 37	ZSH15002	17- 11
ZML06002	29- 10	ZSB09011	27- 19	ZSB15006	15- 38	ZSH15006	17- 28
ZML06005	19- 23	ZSB09018	9- 19	ZSB15009	15- 8	ZSH16001	11- 13
ZML08001	21- 9	ZSB09018	27- 17	ZSB15026	5- 18	ZSH16005	23- 3
ZMQ06002	23- 26	ZSB09028	13- 15	ZSB15037	15- 3	ZSH16005	29- 4
ZMT05001	31- 10	ZSB09029	23- 10	ZSB15041	5- 13	ZSK11036	13- 7
ZSA09006	23- 20	ZSB09032	7- 18	ZSB16004	9- 12	ZSK16017	13- 16
ZSA09010	23- 19	ZSB10002	13- 5	ZSB16004	19- 3	ZSL09001	25- 11
ZSA11005	9- 6	ZSB11009	7- 34	ZSB16004	19- 25	ZSL16010	21- 11
ZSA15010	7- 8	ZSB11010	7- 30	ZSB16011	13- 20	ZSL20004	9- 14
ZSA15017	5- 3	ZSB11011	15- 15	ZSB16011	29- 13	ZSN16002	25- 13
ZSA15017	7- 4	ZSB11012	3- 3	ZSB18001	5- 5		
ZSA15019	5- 2	ZSB11012	3- 5	ZSB18002	5- 4		
ZSA15021	5- 33	ZSB11012	3- 8	ZSB20009	7- 3		
ZSA15025	15- 27	ZSB11012	3- 21	ZSC06005	7- 14		
ZSA15025	15- 28	ZSB11012	3- 28	ZSC09006	17- 23		
ZSA15028	11- 2	ZSB11012	3- 32	ZSC09009	3- 26		
ZSA16007	17- 29	ZSB11012	3- 39	ZSC09021	3- 30		
ZSA16010	17- 26	ZSB11012	29- 31	ZSC09021	3- 34		
ZSA16010	19- 2	ZSB11014	15- 9	ZSC09025	23- 13		
ZSA16010	23- 18	ZSB11016	27- 14	ZSD11001	7- 25		
ZSA16020	17- 27	ZSB11017	13- 2	ZSD15002	19- 15		
ZSA16021	17- 5	ZSB11022	25- 24	ZSD15007	5- 40		
ZSA16025	17- 20	ZSB11026	11- 26	ZSD15007	29- 24		
ZSA16033	5- 42	ZSB11028	15- 36	ZSD16007	11- 6		
ZSA16033	9- 7	ZSB11029	19- 12	ZSD20003	29- 18		
ZSA16033	9- 10	ZSB11032	21- 7	ZSD20004	29- 17		
ZSA16034	5- 7	ZSB11041	3- 10	ZSD20007	29- 9		
ZSA16034	13- 13	ZSB11069	11- 20	ZSE11002	3- 19		
ZSA16034	19- 27	ZSB11083	13- 11	ZSG08003	3- 16		
ZSB06001	25- 17	ZSB11093	21- 5	ZSG09004	25- 5		
ZSB06002	7- 20	ZSB12015	19- 9	ZSG09005	25- 10		
ZSB08002	7- 21	ZSB12017	15- 23	ZSG15059	21- 3		
ZSB08010	19- 17	ZSB15004	5- 30	ZSG16003	13- 18		
ZSB08036	23- 22	ZSB15006	5- 11	ZSG16005	29- 26		
ZSB09005	25- 22	ZSB15006	5- 16	ZSG16013	29- 15		
ZSB09007	25- 21	ZSB15006	5- 31	ZSG16018	11- 25		
ZSB09011	3- 17	ZSB15006	15- 2	ZSG16027	21- 10		



**金輪牌 GOLDEN WHEEL  
CHEE SIANG INDUSTRIAL CO.,LTD**

No.32,Wu Chuan 7th Road, Wu Ku Industrial Area,  
Wu Ku Hsiang 24248, Taipei Hsien, Taiwan  
Tel:886-2-22999518 Fax:886-2-22999519

No.8365M00

※Appear and specification listed in this instruction manual are subjected to change without notice.

※This parts list is edited and printed in accordance with the product specifications as of October 2001. 2001.10 Printed in Taiwan