

# 金輪牌 GOLDEN WHEEL

Cylinder-Bed,1-Needle, Unisonfeed Lockstitch Machine

**CS-8703**

Cylinder-Bed,1-Needle, Unisonfeed Lockstitch Machine  
With Large-Capacity Hook

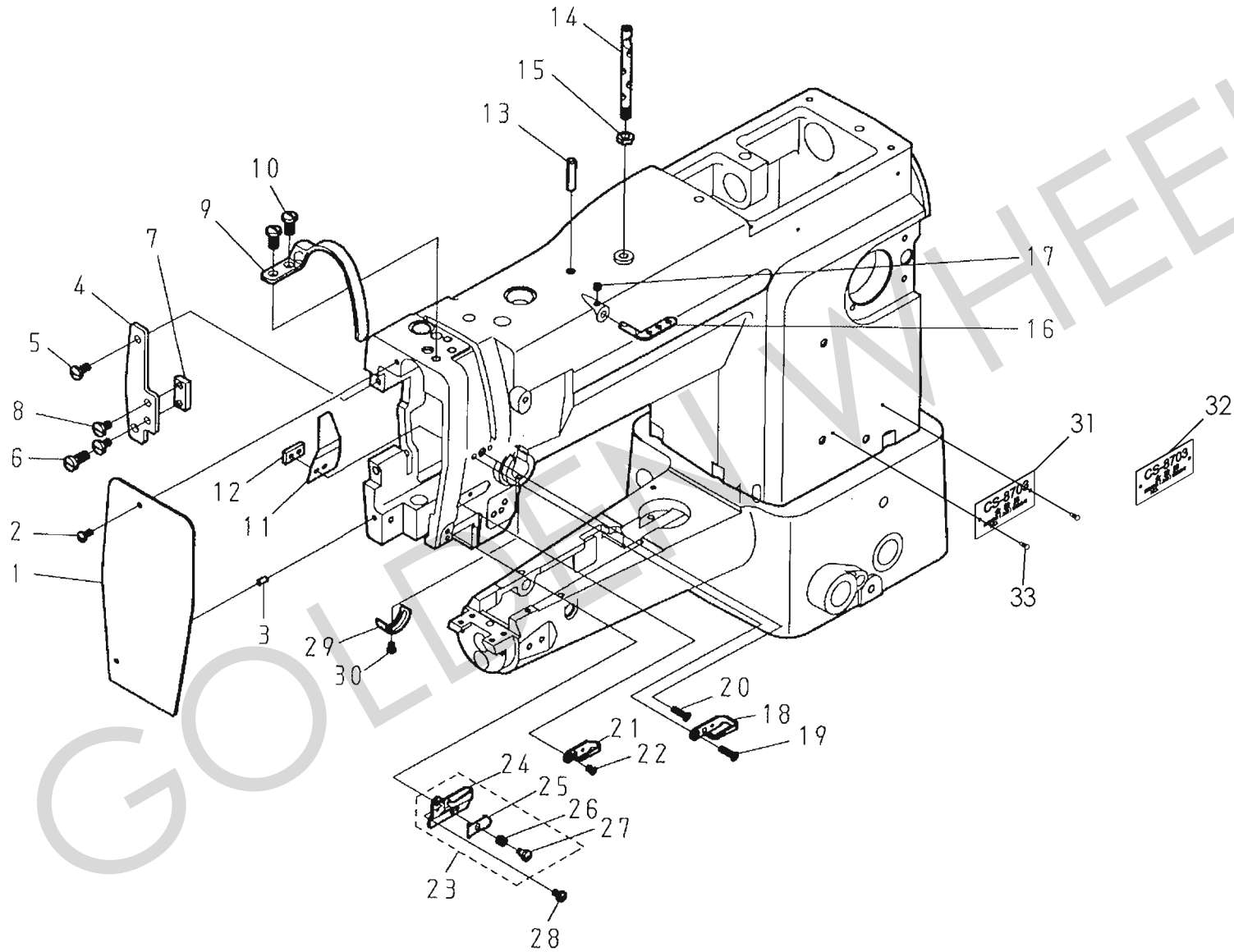
**CS-8713**

## 零件分解圖 PARTS LIST

**CHEE SIANG INDUSTRIAL CO.,LTD**

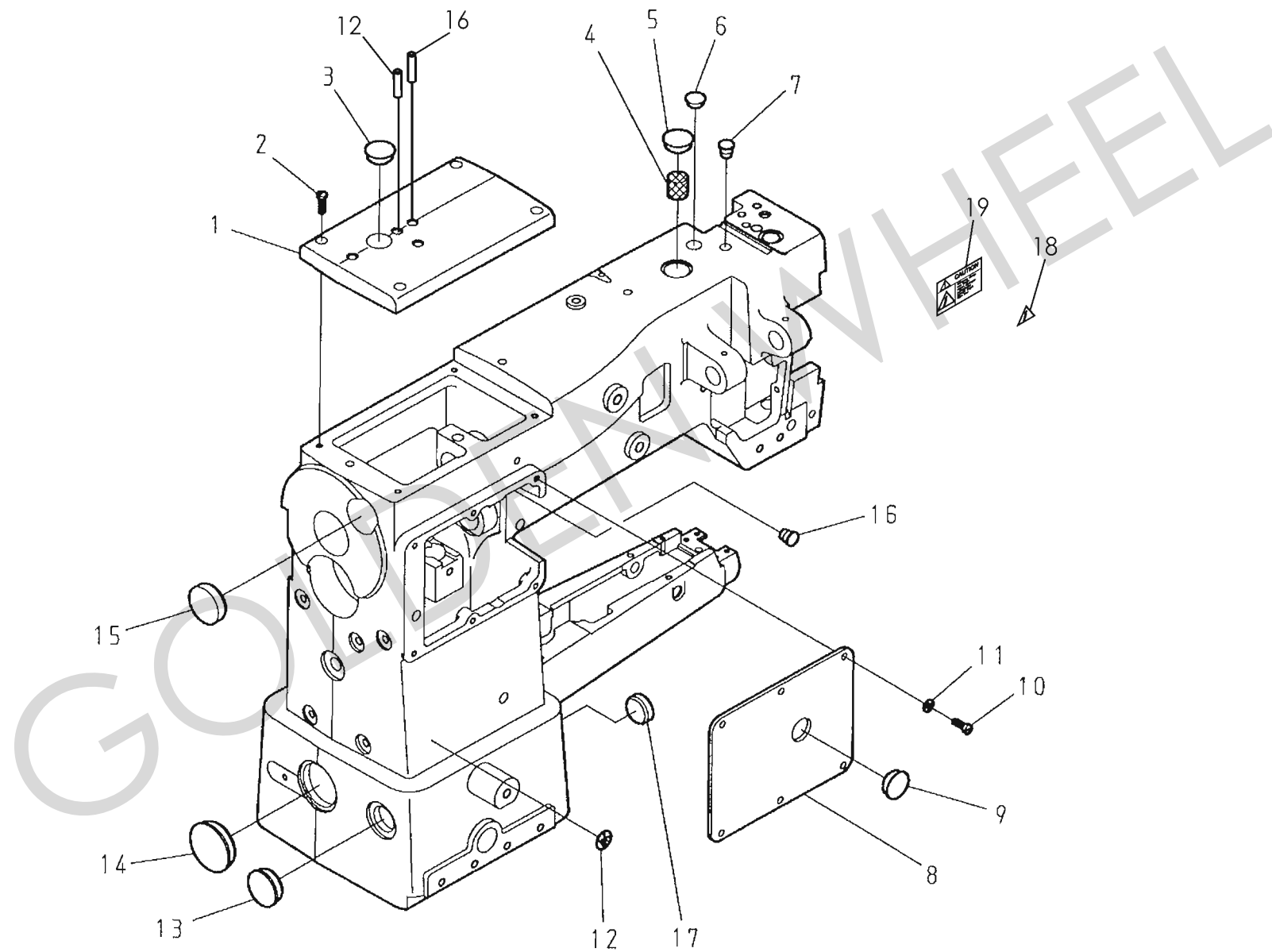
MODEL : CS-8703, CS-8713

目次	CONTENT	PAGE
A. 本體關係	FRAME & MISCELLANEOUS COVER COMPONENTS	2-7
B. 上軸・豎軸關係	MAIN SHAFT & UPRIGHT SHAFT COMPONENTS	8-9
C. 針棒・天秤關係	NEEDLE BAR & THREAD TAKE-UP LEVER COMPONENTS	10-11
D. 針棒 搖擺關係	NEEDLE BAR LOCKING MOTION MECHANISM COMPONENTS	12-13
E. 上部送料關係	UPPER FEED MECHANISM COMPONENTS	14-15
F. 押脚・脚弓關係	PRESSURE BAR & KNEE LIFTER COMPONENTS	16-21
G. 下部送料關係	LOWER FEED MECHANISM COMPONENTS	22-25
H. 縫目調節關係	FEED ADJUSTMENT MECHANISM COMPONENTS	26-29
I. 下軸關係	HOOK DRIVE SHAFT COMPONENTS	30-31
J. 縫線壓力調節關係	UPPER THREAD TENSION REGULATOR MECHANISM COMPONENTS	32-33
K. 附件關係	ACCESSORIES	34-35
L. 針位圖號詳圖	GAUGE PARTS LIST	36
M. 零件號碼與頁數對照表	NUMERICAL PARTS LIST	37-40



A. CS-8703、CS-8713 本體關係 (1/3) FRAME & MISCELLANEOUS COVER COMPONENTS (1/3)

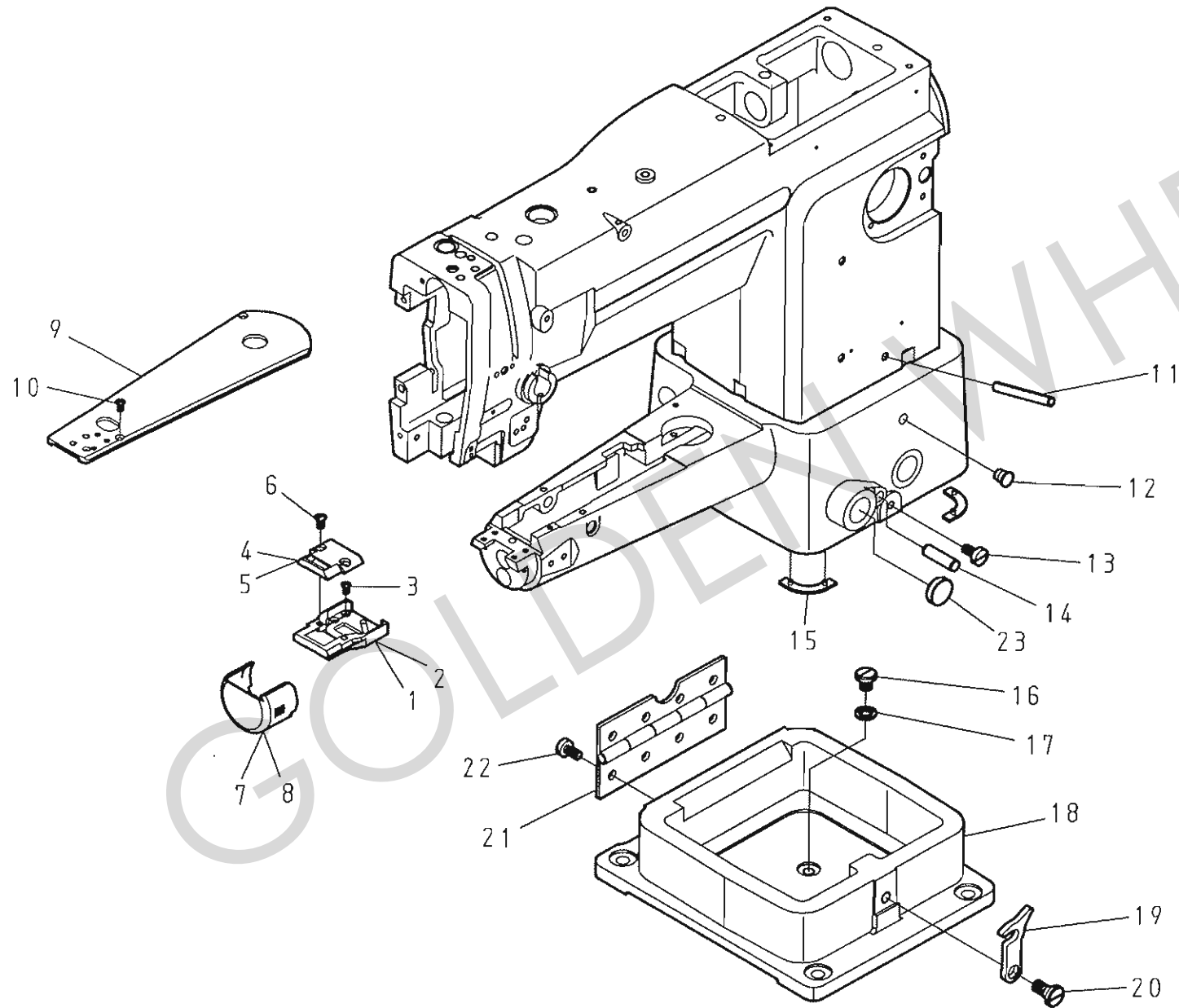
REF.No	NOTE	零件號碼	零件名稱	Name of Part	件數	Q'TY	備註
		Part No.			8703	8713	Remarks
1		8703111000	面板	Face Plate	1	1	
2		ZSB09017	螺絲	Screw 9/64-40*8	1	1	
3		YA035075	銷	Pin	1	1	
4		8233110900	定位座	Vibrating Presser Bar Guide	1	1	
5		ZSB12006	螺絲	Screw 3/16-28*10	1	1	
6		ZSB15009	螺絲	Screw 15/64-28*13	1	1	
7		8233143700	定位板	Bell Crank Guide	1	1	
8		ZSB12030	螺絲	Screw 3/16-32*8	2	2	
9		F1063-0A	天秤蓋	Thread Take-up Lever Cover	1	1	
10		ZSB15010	螺絲	Screw 15/64-28*10	2	2	
11		EJ1014-0A	油防板	Oil Guard Plate	1	1	
12		EJ1017-0A	螺帽板	Spaser	1	1	
13		YD060024	油導管	Oil Pipe	1	1	
14		8703T-001	銘牌	Nameplate	1	0	
15		8713T-001	銘牌	Nameplate	0	1	
16		A1051-0A	線掛	Thread Guide	1	1	
17		ZSA11007	螺絲	Screw 11/64-40*7	1	1	
18		C1052-0A	線掛(上)	Thread Guide(Upper)	1	1	
19		ZSC09021	螺絲	Screw 9/64-40*13	1	1	
20		ZSC09021	螺絲	Screw 9/64-40*13	1	1	
21		C1054-0A	線掛(中)	Thread Guide(Center)	1	1	
22		ZSC09009	螺絲	Screw 9/64-40*6.5	1	1	
23		8370311605	線掛(套)	Thread Guide Asm.	1	1	
24		EJ1055-0A	線掛	Thread Guide	(1)	(1)	
25		EJ1056-0A	壓線具	Guide Plate	(1)	(1)	
26		EJ1057-0A	彈簧	Spring	(1)	(1)	
27		ZSG08003	螺絲	Hinge Screw	(1)	(1)	
28		ZSB09011	螺絲	Screw 9/64-40*6.5	1	1	
29		J1041-0A	線軸彈簧調整器	Stopper	1	1	
30		ZSB09005	螺絲	Screw 9/64-40*5	1	1	
31		A1019-0A	鉚釘	Rivet	2	2	



A. CS-8703, CS-8713 本體關係 (2/3) FRAME & MISCELLANEOUS COVER COMPONENTS (2/3)

REF.No	NOTE	零件號碼	零件名稱	Name of Part	件數	Q'TY	備註
		Part No.			8703	8713	Remarks
1		8703110500	上蓋(組)	Top Cover Asm.	1	1	
2		ZSB11017	螺絲	Screw 11/64-40*12	4	4	
3		A1013-0A	油蓋	Rubber Plug	1	1	
4		XB114001	油綿	Felt	1	1	
5		A1013-0D	油蓋	Rubber Plug	1	1	
6		A1013-1A	油蓋	Rubber Plug	1	1	
7		6120117400	油蓋	Rubber Plug	1	1	
8		8703168000	橫蓋	Arm Side Cover	1	1	
9		A1013-0A	油蓋	Rubber Plug	1	1	
10		ZSB11017	螺絲	Screw 11/64-40*12	6	6	
11		WA049003	平墊圈	Washer	6	6	
12		YD060028	銷	Pin	1	1	
13		6120117300	油蓋	Rubber Plug	1	1	
14		6220117900	油蓋	Rubber Plug	1	1	
15		6120117000	油蓋	Rubber Plug	1	1	
16		YD060036	銷	Pin	1	1	
17		8710118400	油蓋	Rubber Plug	1	1	
18		WARN000108-A	貼紙	Paster	1	1	
19		WARN000310	貼紙	Paster	1	1	

GOLDEN

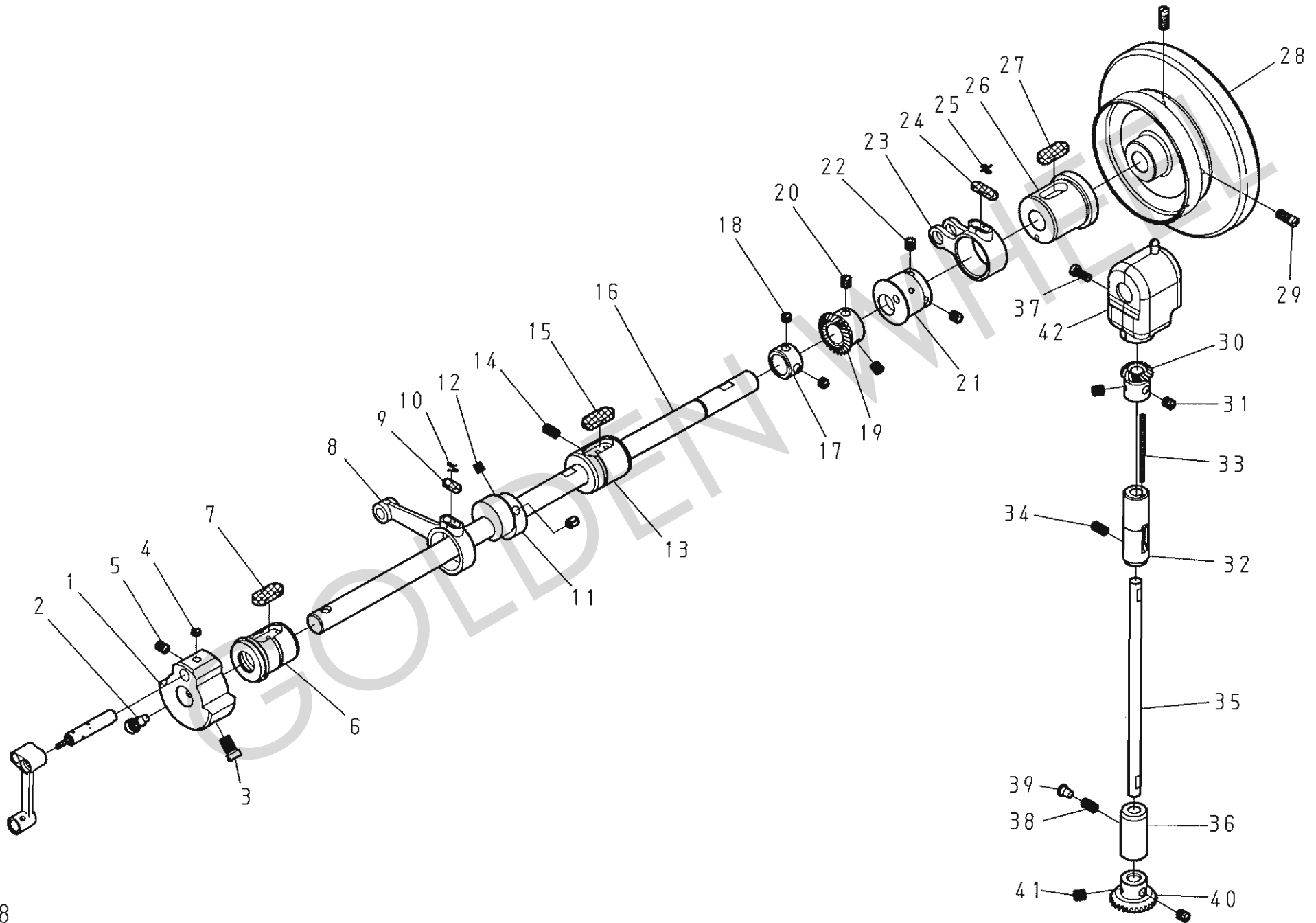


A. CS-8703、CS-8713 本體關係 (3/3) FRAME & MISCELLANEOUS COVER COMPONENTS (3/3)

REF.No	NOTE	零件號碼	零件名稱	Name of Part	件數	Q'TY	備註
		Part No.			8703	8713	Remarks
1		8700110600	底座頭蓋	Bed Cylrinder Cap	1	0	
2		87101106K0	底座頭蓋	Bed Cylrinder Cap	0	1	
3		ZSB09044	螺絲	Screw 9/64-40*5.3	4	4	
4		8700111301	針板	Throat Plate	1	0	
5		8710111301	針板	Throat Plate	0	1	
6		ZSC11003	螺絲	Screw 11/64-40*9	2	2	
7		8700183600	梭頭蓋	Hook Cover	1	0	
8		6220183600	梭頭蓋	Hook Cover	0	1	
9		8713110400	送料面板	Cover	1	1	
10		ZSC09012	螺絲	Screw 9/64-40*7	2	2	
11		YD060056	油導管	Oil Pipe	1	1	
12		6120117400	油蓋	Rubber Plug	1	1	
13		ZSB15034	螺絲	Screw 15/64-28*12	1	1	
14		YA080280	銷	Stopper Pin	1	1	
15		6220119100	防振橡膠	Vibration Preventing Rubber	2	2	
16		ZSB20014	螺絲	Screw 5/16-28*9.3	1	1	
17		EJ4109-0A	墊圈	Spacer	1	1	
18		8703110300	底座盤	Machine Base	1	1	
19		6220112700	底座銷勾	Latch	1	1	
20		ZSG20018	螺絲	Hinge Screw	1	1	
21		6220112800	後鈕	Hinge	1	1	
22		ZSB15034	螺絲	Screw 15/64-28*12	8	8	
23	#01	6120117100	油蓋	Rubber Plug	1	1	

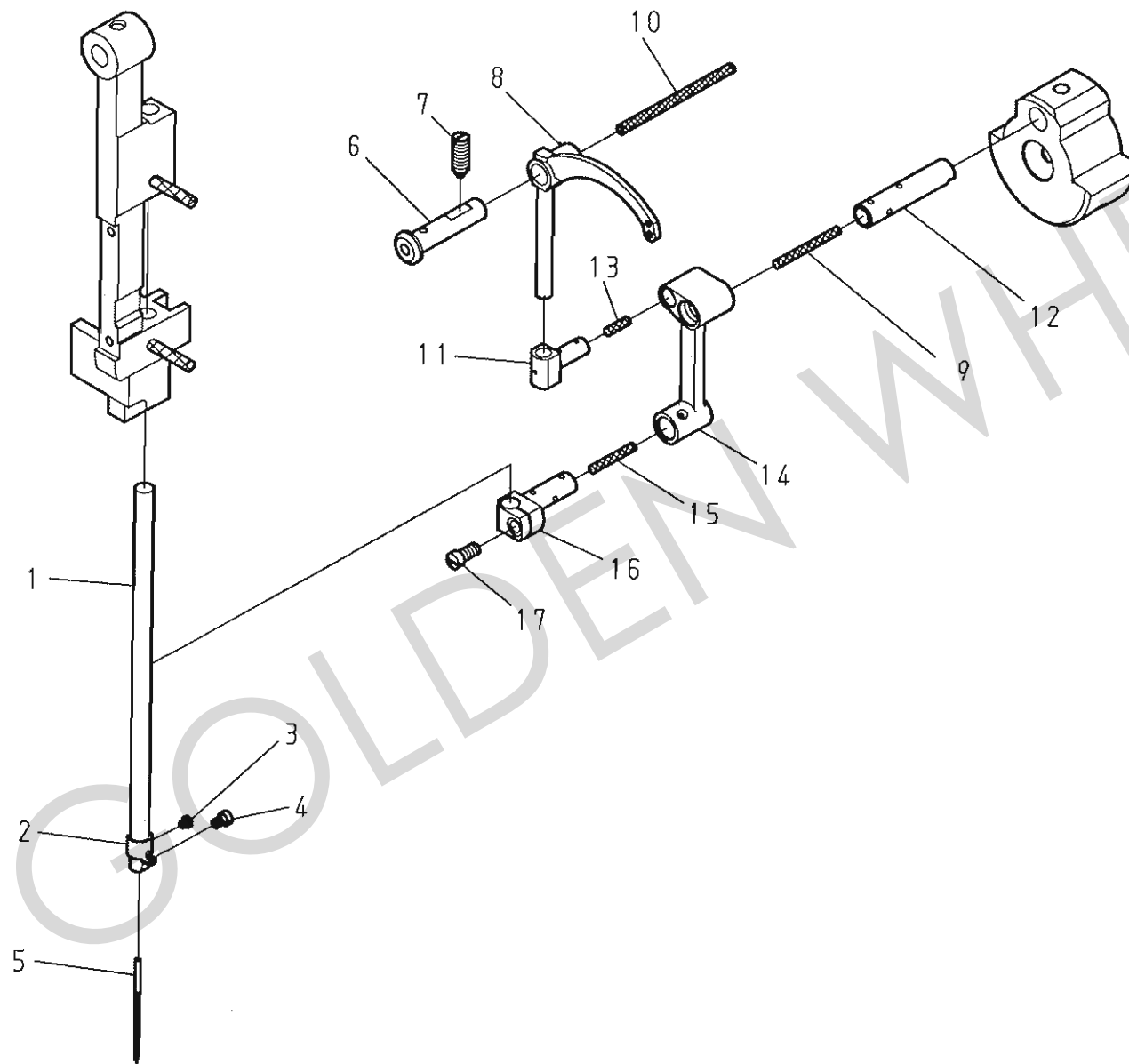
Note(注記) #01. . . . Pedal Lifter Specification Parts 踏板仕様部品





B. CS-8703, CS-8713 上軸·豎軸關係 MAIN SHAFT & UPRIGHT SHAFT COMPONENTS

REF.No	NOTE	零件號碼	零件名稱	Name of Part	件數	Q'TY	備註
		Part No.			8703	8713	Remarks
1		8713120800	凸輪	Counterweight	1	1	
2		ZSB18001	螺絲	Screw 9/32-28*9.5	1	1	
3		ZSB18002	螺絲	Screw 9/32-28*13	1	1	
4		ZSA15019	螺絲	Screw 15/64-28*3	1	1	
5		ZSA15017	螺絲	Screw 15/64-28*8.5	2	2	
6		8110120200	上軸套管(前)	Main Shaft Bushing, Front	1	1	
7		XB210001	油綿	Felt	1	1	
8		8233144501	連桿	Connecting Rod	1	1	
9		XB207002	油綿	Felt	1	1	
10		A1130-0A	彈簧	Spring	1	1	
11		823314400Q	偏心輪	Driving Cam	1	1	
12		ZSH16004	螺絲	Screw 1/4-40*10	2	2	
13		8110120301	上軸套管(中)	Main Shaft Bushing, Center	1	1	
14		ZSA15020	螺絲	Screw 15/64-28*11	1	1	
15		XB210001	油綿	Felt	1	1	
16		8703120100	上軸	Main Shaft	1	1	
17		E4044-0A	定環	Thrust Collar	1	1	
18		ZSA16010	螺絲	Screw 1/4-40*4.5	2	2	
19		A1108-0C	上傘齒車(大)	Bevel Gear, Large	1	1	
20		ZSA16011	螺絲	Screw 1/4-40*7	2	2	
21		6220122000	偏心輪	Feed Cam	1	1	
22		ZSH16001	螺絲	Screw 1/4-40*6	2	2	
23		5371167400	倒縫軸連結腕	Reverse Sewing Crank	1	1	
24		XB207001	油綿	Felt	1	1	
25		A1130-0A	彈簧	Spring	1	1	
26		8110120400	上軸套管(後)	Main Shaft Bushing, Rear	1	1	
27		XB210001	油綿	Felt	1	1	
28		6120120302	皮帶輪	Hand Wheel	1	1	
29		ZSB15026	螺絲	Screw 15/64-28*18	2	2	
30		A1109-0C	豎傘齒車(小)	Bevel Gear, Small	1	1	
31		ZSA16011	螺絲	Screw 1/4-40*7	2	2	
32		8110132100	豎軸套管	Upright Shaft Bushing	1	1	
33		XA300055	油線	Oil Wick	1	1	
34		ZSA15020	螺絲	Screw 15/64-28*11	1	1	
35		8110132000	豎軸	Upright Shaft	1	1	
36		A1113-0B	豎軸套管	Upright Shaft Bushing	1	1	
37		ZSB12008	螺絲	Screw 3/16-24*12	1	1	
38		ZSA15020	螺絲	Screw 15/64-28*11	1	1	
39		A1013-1A	油蓋	Rubber Plug	1	1	
40		A4020-0C	豎傘齒車(大)	Bevel Gear, Large	1	1	
41		ZSA16011	螺絲	Screw 1/4-40*7	2	2	
42		8703351005	上齒輪蓋組	Gear Case Cover	1	1	



C. CS-8703, CS-8713 針棒·天秤關係 NEEDLE BAR & THREAD TAKE-UP LEVER COMPONENTS

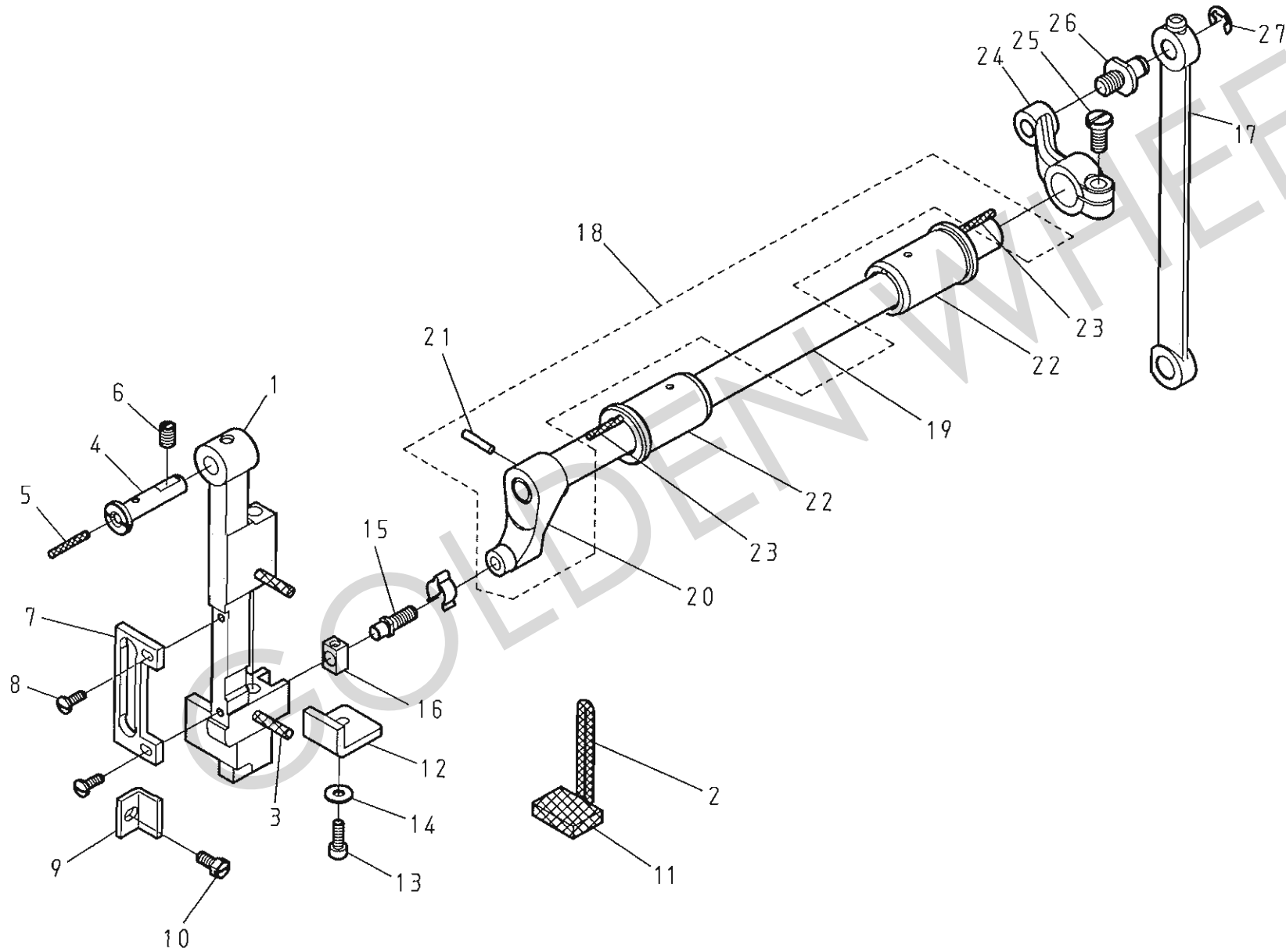
REF.No	NOTE	零件號碼	零件名稱	Name of Part	件數	Q'TY	備註
		Part No.			8703	8713	Remarks
1		Q1070-0A	針棒	Needle Bar	1	1	
2		F1076-0A	針棒線掛	Needle Bar Thread Guide	1	1	
3		ZSB06002	螺絲	Screw 3/32-56*2.5	1	1	
4		ZSB08002	螺絲	Screw 1/8-44*4.5	1	1	
5		INDP×17-21	針	Needle DP×17-21	1	1	
6		8703106100	天秤固定銷	Thread Take-up Lever Pin	1	1	
7		ZSA15012	螺絲	Screw 15/64-28*17	1	1	
8		8713190101	天秤	Thread Take-up Lever	1	1	
9		XA300065	油線	Oil Wick	1	1	
10		XA200250	油線	Oil Wick	1	1	
11		8713190800Q	天秤滑塊	Thread Take-up Slide Brock	1	1	
12		7162110700	針棒連接軸	Needle Bar Crank Shaft	1	1	
13		XA300030	油線	Oil Wick	1	1	
14		<del>8713190800Q</del>	針棒連接桿	Needle Bar Crank Rod	1	1	
15		XA300020	油線	Oil Wick	1	1	
16		B1074-0A	針棒鉗	Needle Bar Connection	1	1	
17		ZSB11003	螺絲	Screw 11/64-40*9	1	1	

8703108000

GOLDEN WHEEL

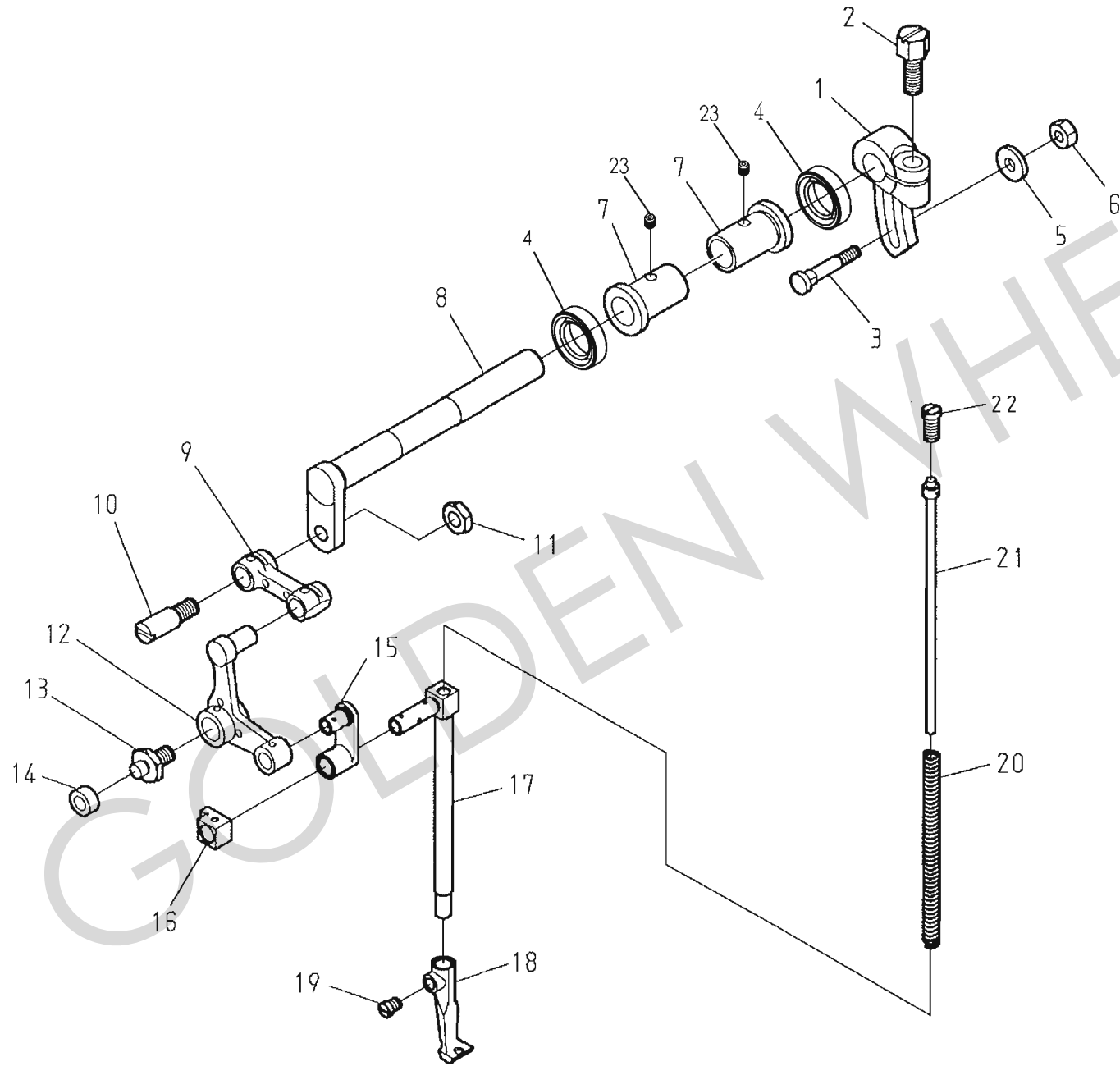
D. CS-8703、CS-8713 針棒搖擺關係 NEEDLE BAR ROCKING MOTION

MECHANISM COMPONENTS



D. CS-8703, CS-8713 針棒搖擺關係 NEEDLE BAR ROCKING MOTION MECHANISM COMPONENTS

REF.No	NOTE	零件號碼 Part No.	零件名稱	Name of Part	件數 8703	Q'TY 8713	備註 Remarks
1		8610270100	針柱台	Needle Bar Guide Bracket	1	1	
2		XA300125	油線	Oil Wick	1	1	
3		XA300040	油線	Oil Wick	1	1	
4		B1091-0A	針柱座固定軸	Needle Bar Guide Bracket Stud	1	1	
5		XA300020	油線	Oil Wick	1	1	
6		ZSA15023	螺絲	Screw 15/64-28*10	1	1	
7		B1285-0A	押腳舉升連桿案内	Vibrating Presser Bar Guide	1	1	
8		ZSB09002	螺絲	Screw 9/64-40*10	2	2	
9		8713270500	針柱座定位板	Needle Bar Guide	1	1	
10		ZSD11001	螺絲	Screw 11/64-40*10	2	2	
11		XB316001	油綿	Felt	1	1	
12		8110270401	針柱座定位板	Needle Bar Guide	1	1	
13		ZMJ04002	螺絲	Screw M4×0.7*12	1	1	
14		WA049005	平墊圈	Washer	1	1	
15		B1333-0A	角駒軸	Crank Pin	1	1	
16		B1334-0A	角駒	Square Block	1	1	
17		8610271100	連接桿	Connecting Rod	1	1	
18		8110270814	擺動臂軸結合	Needle Bar Vibrating Shaft Ams.	1	1	
19		8110270801	擺動臂軸	Needle Bar Vibrating Shaft	(1)	(1)	
20		F1332-0A	擺動臂	Needle Bar Vibrating Crank (Left)	(1)	(1)	
21		YB030020	推拔銷	Taper Pin $\phi 3*20*1/50$	(1)	(1)	
22		8110272801	擺動臂軸 套管	Needle Bar Vibrating Shaft Bushing	2	2	
23		XA300040	油線	Oil Wick	2	2	
24		8710271000	擺動臂	Needle Bar Vibrating Crank (Right)	1	1	
25		ZSB15009	螺絲	Screw 15/64-28*13	1	1	
26		Q4436-1A	螺絲	Hinge Screw	1	1	
27		RE000060	E扣環 6	Retaining Rings- E Type 6	1	1	

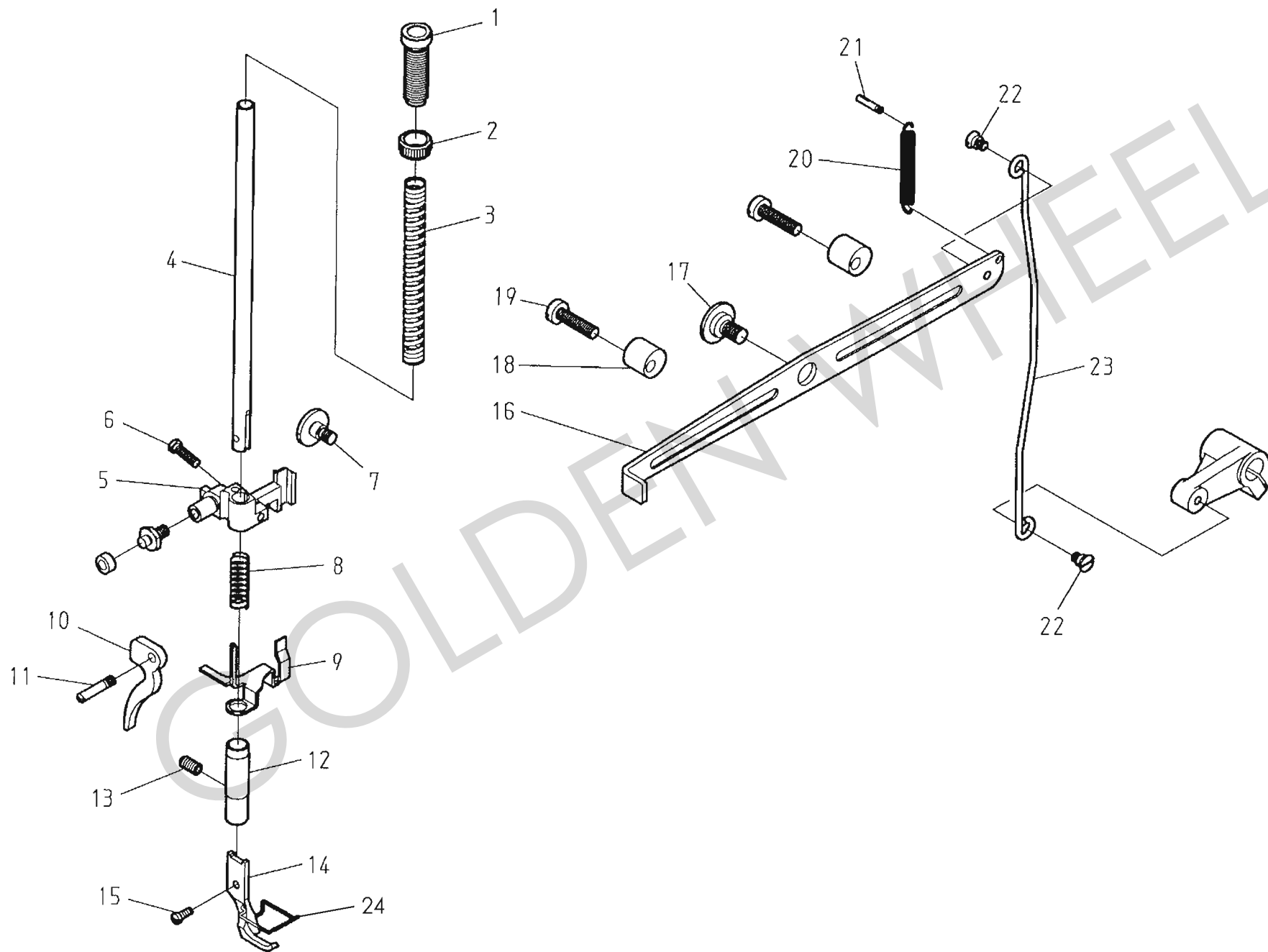


## E. CS-8703、CS-8713 上部送料關係 UPPER FEED MECHANISM COMPONENTS

REF.No	NOTE	零件號碼	零件名稱	Name of Part	件數	Q'TY	備註
		Part No.			8703	8713	Remarks
1		8233144702	上送軸曲柄	Feed Rotating Shaft Crank	1	1	
2		ZSD16007	螺絲	Screw 1/4-28*16.5	1	1	
3		ZMG06019	螺絲	Screw	1	1	
4		OAGM111503	油封	Oil Seal	2	2	
5		WH206009	平墊圈	Washer	1	1	
6		ZML06001	螺帽	Nut (M6 X 1.0)	1	1	
7		8703145000	上送軸套管	Feed Rotating Shaft Bushing	2	2	
8		8233144801	上送軸	Feed Rocker Shaft	1	1	
9		8233145101	舉升曲柄連桿	Lifting Bell Crank Link	1	1	
10		ZSK16002	螺絲	Hinge Screw	1	1	
11		ZSL16001	螺帽	Nut 1/4-32	1	1	
12		8233143601	舉升曲臂連桿	Lifting Bell Crank	1	1	
13		8233152000	固定銷	Pin	1	1	
14		8233151900	導塊	Roller	1	1	
15		B1283-0A	押腳舉升連桿	Vibrating Presser Bar Link	1	1	
16		B1284-0A	滑塊	Slide Brock	1	1	
17		8703141700	中腳押棒	Vibrating Presser Bar	1	1	
18		8710151000	內壓腳	Walking Foot	1	1	
19		ZSB11009	螺絲	Screw 11/64-40*5	1	1	
20		8230144203	彈簧	Spring	1	1	
21		B1280-0A	彈簧導桿	Vibrating Presser Spring Guide	1	1	
22		ZSB20017	螺絲	Screw 5/16-28*10	1	1	
23		ZSA11012	螺絲	Screw 11/64-40*6.5	2	2	



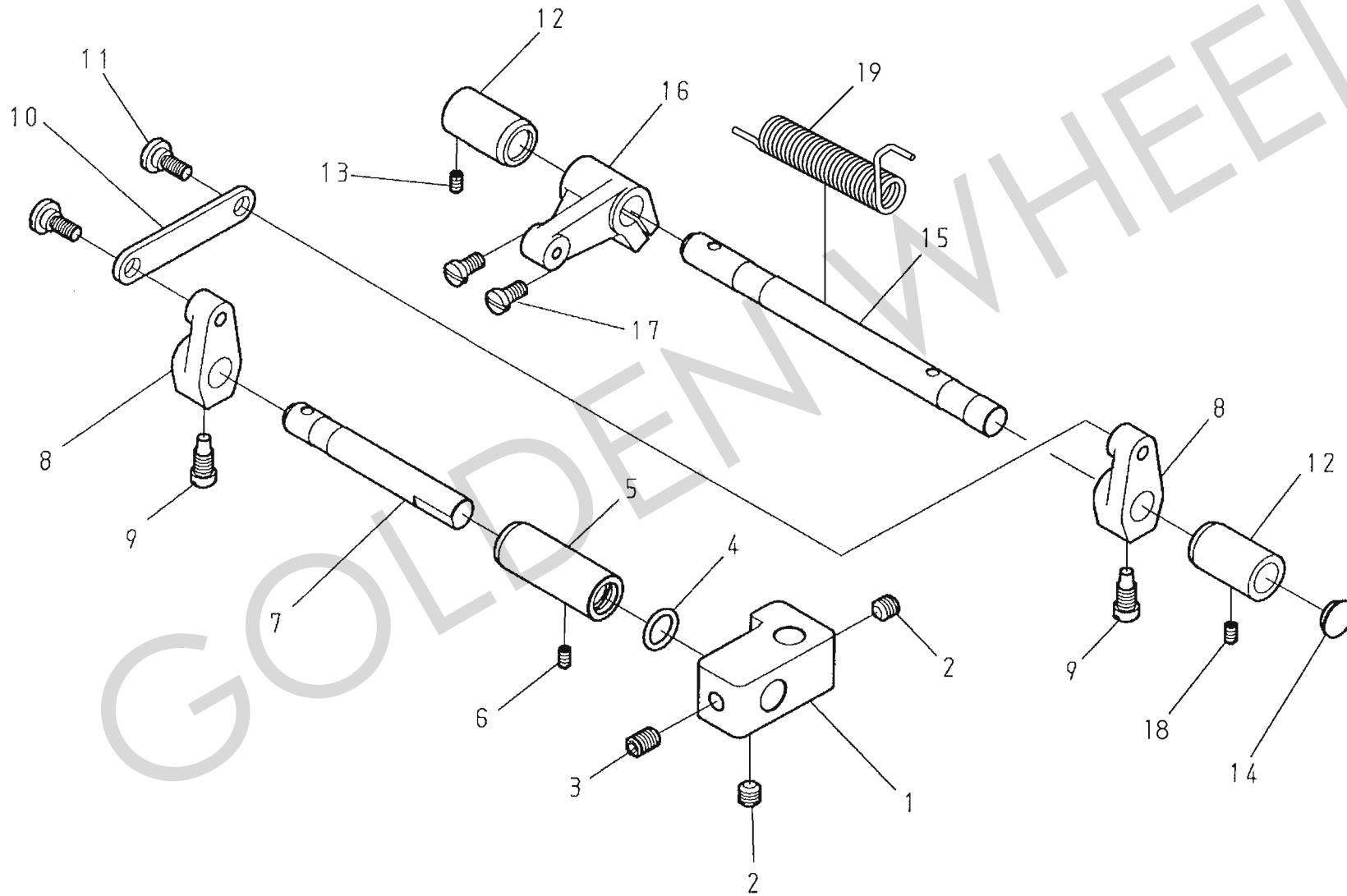
F. CS-8703、CS-8713 押脚・脚弓関係 (1/3) PRESSURE BAR & KNEE LIFTER COMPONENTS (1/3)



F. CS-8703、CS-8713 押脚・脚弓關係 (1/3) PRESSURE BAR & KNEE LIFTER COMPONENTS(1/3)

REF.No	NOTE	零件號碼	零件名稱	Name of Part	件數	Q'TY	備註
		Part No.			8703	8713	Remarks
1		ZSF32001	螺絲	Screw	1	1	
2		ZSN32001	螺帽	Nut	1	1	
3		8230150401	壓縮彈簧	Presser Spring	1	1	
4		8703150100	押棒	Presser Bar	1	1	
5		8233150500	押棒堤昇器	Presser Bar Lifter	1	1	
6		ZSB11086	螺絲	Screw 11/64-40*18	1	1	
7		ZSG16006	螺絲	Hinge Screw	1	1	
8		B1274-0A	彈簧	Spring	1	1	
9		8233344000	鬆線導板	Tension Release Slide	1	1	
10		EJ1200-0A	押脚堤桿	Presser Foot Lifter	1	1	
11		ZSK12026	螺絲	Hinge Screw	1	1	
12		8233150200	押棒套管	Bushing	1	1	
13		ZSA15020	螺絲	Screw 15/64-28*11	1	1	
14		8710153000	外壓脚(組)	Presser Foot Asm.	1	1	
15		ZSB09003	螺絲	Screw 9/64-40*9	1	1	
16		8233343000	押脚抬高桿	Foot Lifter Lifting Lever	1	1	
17		ZSG20004	螺絲	Hinge Screw	1	1	
18		8370341100	固定銷	Stopper	2	2	
19		ZSB16011	螺絲	Screw 1/4-24*25	2	2	
20		8230340200	彈簧	Spring	1	1	
21		EJ4434-2A	彈簧鈞	Spring Suspension	1	1	
22		ZSK12003	螺絲	Hinge Screw	2	2	
23		8703340400	連接棒	Knee Operating Connection Bar	1	1	
24		8710152500	卡簧	Spring	1	1	

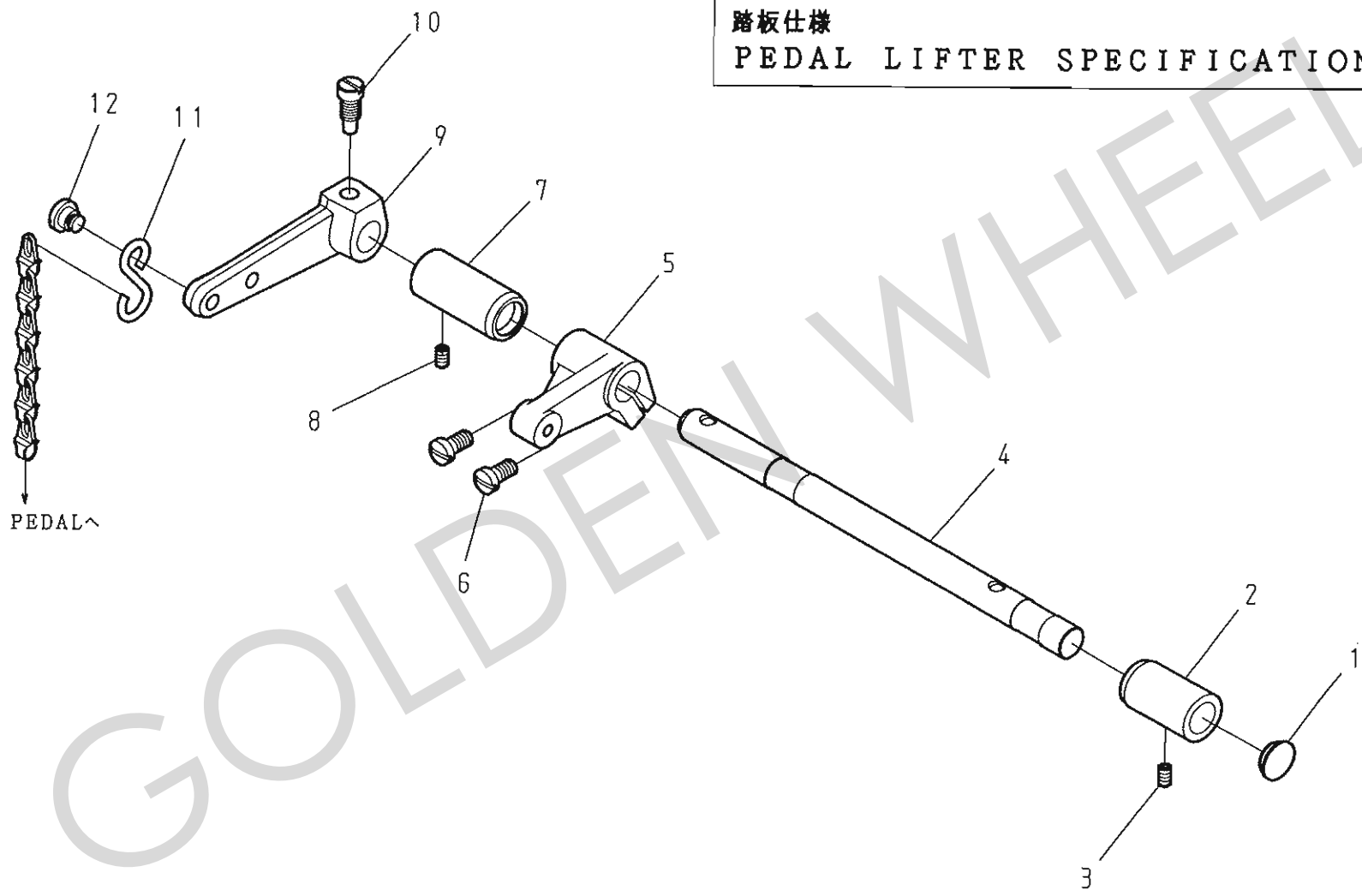
膝上仕様  
KNEE LIFTER SPECIFICATIONS



F. CS-8703, CS-8713 押脚・脚弓關係 (2/3) PRESSURE BAR & KNEE LIFTER COMPONENTS (2/3)

REF.No	NOTE	零件號碼	零件名稱	Name of Part	件數	Q'TY	備註
		Part No.			8703	8713	Remarks
1		6220342000	連接器	Knee Lifter Crank	1	1	
2		ZMH08003	螺絲	Screw M8×1.25*8	2	2	
3		ZMH08002	螺絲	Screw M8×1.25*12	1	1	
4		OPP01250	O形環 12.5	O-rings φ12.5	1	1	
5		6220344200	套管	Bushing	1	1	
6		ZSA11007	螺絲	Screw 11/64-40*7	1	1	
7		6220342200	軸	Shaft	1	1	
8		8703341600	連接器	Knee Lifter Crank	2	2	
9		ZSB18001	螺絲	Screw 9/32-28*9.5	2	2	
10		8703343400	連接桿	Knee Lifter Link	1	1	
11		ZSG15040	螺絲	Hinge Screw	2	2	
12		8703343800	套管	Bushing	2	2	
13		ZSA11007	螺絲	Screw 11/64-40*7	1	1	
14		6220118100	油蓋	Rubber Plug	2	2	
15		8703341701	脚押直桿	Knee lifter shaft	1	1	
16		8703342900	連接器	Knee Lifter Crank (Rear)	1	1	
17		ZSB15028	螺絲	Screw 15/64-28*11.5	2	2	
18		ZSA11004	螺絲	Screw 11/64-28*3.5	1	1	
19		8703343900	彈簧	Spring	1	1	

GOLDEN



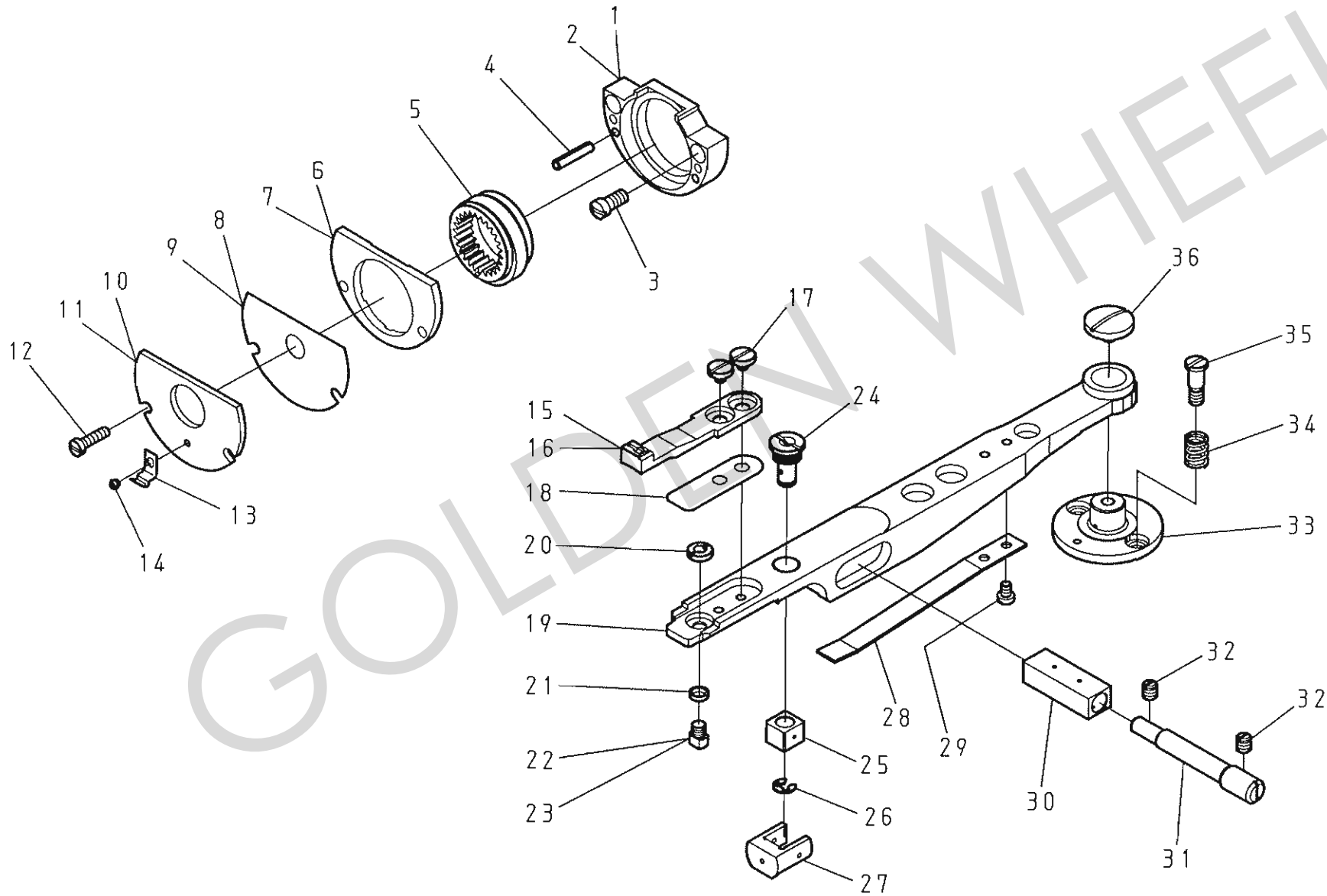
F. CS-8703、CS-8713 押脚・脚弓関係 (3/3) PRESSURE BAR & KNEE LIFTER COMPONENTS(3/3)

REF.No	NOTE	零件號碼 Part No.	零件名稱	Name of Part	件數 8703	Q'TY 8713	備註 Remarks
1	#01	6220118100	油蓋	Rubber Plug	1	1	
2	#01	8703343800	套管	Bushing	1	1	
3	#01	ZSA11007	螺絲	Screw 11/64-40*7	1	1	
4	#01	8703341701	脚押直桿	Knee lifter shaft	1	1	
5	#01	8703342900	連接器	Knee Lifter Crank (Rear)	1	1	
6	#01	ZSB15028	螺絲	Screw 15/64-28*11.5	2	2	
7	#01	8703344200	套管	Bushing	1	1	
8	#01	ZSA11007	螺絲	Screw 11/64-40*7	1	1	
9	#01	8703344400	脚押臂	Knee lifter Crank	1	1	
10	#01	ZSB18001	螺絲	Screw 9/32-28*9.5	1	1	
11	#01	4710340800	S形銷	S-Plug	1	1	
12	#01	ZSG16025	螺絲	Hinge Screw	1	1	

Note(注記) #01. . . . . Pedal Lifter Specification Parts 踏板仕様部品

GOLDEN WHEEL

G. CS-8703、CS-8713 下部送料関係 (1/2) LOWER FEED MECHANISM COMPONENTS (1/2)

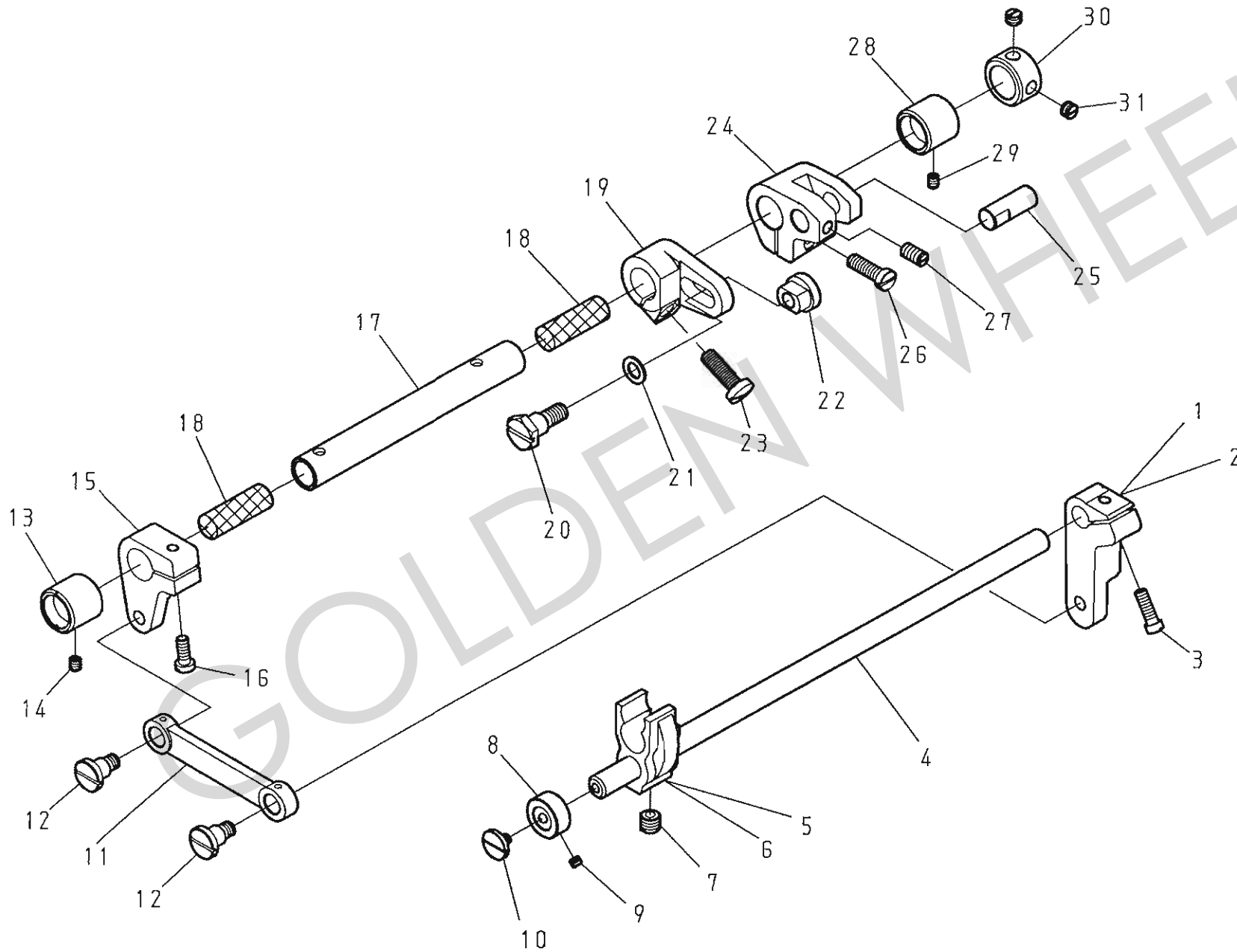


G. CS-8703、CS-8713 下部送料關係(1/2) LOWER FEED MECHANISM COMPONENTS(1/2)

REF.No	NOTE	零件號碼	零件名稱	Name of Part	件數	Q'TY	備註
		Part No.			8703	8713	Remarks
1		87001713K0	上下偏心輪座 B	Feed Cam Holder B	1	0	
2		87101713K0	上下偏心輪座 B	Feed Cam Holder B	0	1	
3		ZSB11051	螺絲	Screw 11/64-40*11.5	2	2	
4		YD030015	彈簧銷	Spring Pin 3.0X15	2	2	
5		6220170900	上下偏心輪	Feed Cam	1	1	
6		87001712K0	上下偏心輪座 A	Feed Cam Holder A	1	0	
7		87101712K0	上下偏心輪座 A	Feed Cam Holder A	0	1	
8		L4114-3A	上下偏心輪座內蓋	Feed Cam Holder Washer	1	0	
9		6220171400	上下偏心輪座內蓋	Feed Cam Holder Washer	0	1	
10		L6020-3A	上下偏心輪座外蓋	Feed Cam Holder Plate	1	0	
11		6220171500	上下偏心輪座外蓋	Feed Cam Holder Plate	0	1	
12		ZSB08016	螺絲	Screw 1/8-44*12	2	2	
13		6220183700	梭頭蓋彈簧	Hook Cover Spring	1	1	
14		ZSB06004	螺絲	Screw 3/32-56*2.2	1	1	
15		8700161402	送料齒	Feed dog	1	0	
16		8710161402	送料齒	Feed dog	0	1	
17		ZSB08041	螺絲	Screw 1/8-44*4	2	2	
18		6220166100	墊圈	Spacer	1	1	
19		62201601K0	送料台	Feed Bar	1	1	
20		87101716K0	螺帽	Nut 11/64-40	1	1	
21		87101717K0	平墊圈	Washer	1	1	
22		87001711K0	銷	Pin	1	0	
23		87101711K0	銷	Pin	0	1	
24		6220163300	螺絲	Feed bar Slide Screw Stud	1	1	
25		6220169600	滑駒	Feed bar Slide Block	1	1	
26		RE000030	E型扣環	E-Shaped Snap Rings (3mm)	1	1	
27		6220169700	滑駒	Feed bar Slide Block A	1	1	
28		6220169800	彈簧	Spring	1	1	
29		ZSB08010	螺絲	Screw 1/8-44*4.6	2	2	
30		6220169500	滑塊	Block	1	1	
31		6220164400	送料台軸	Eccentric Shaft	1	1	
32		ZSA11012	螺絲	Screw 11/64-40*4.6	2	2	
33		6220169400	送料齒座軸心	Feed bar Stud	1	1	
34		L6063-2A	彈簧	Spring	2	2	
35		ZSG11028	螺絲	Hinge Screw	2	2	
36		ZSB11047	螺絲	Screw 11/64-40*5	1	1	

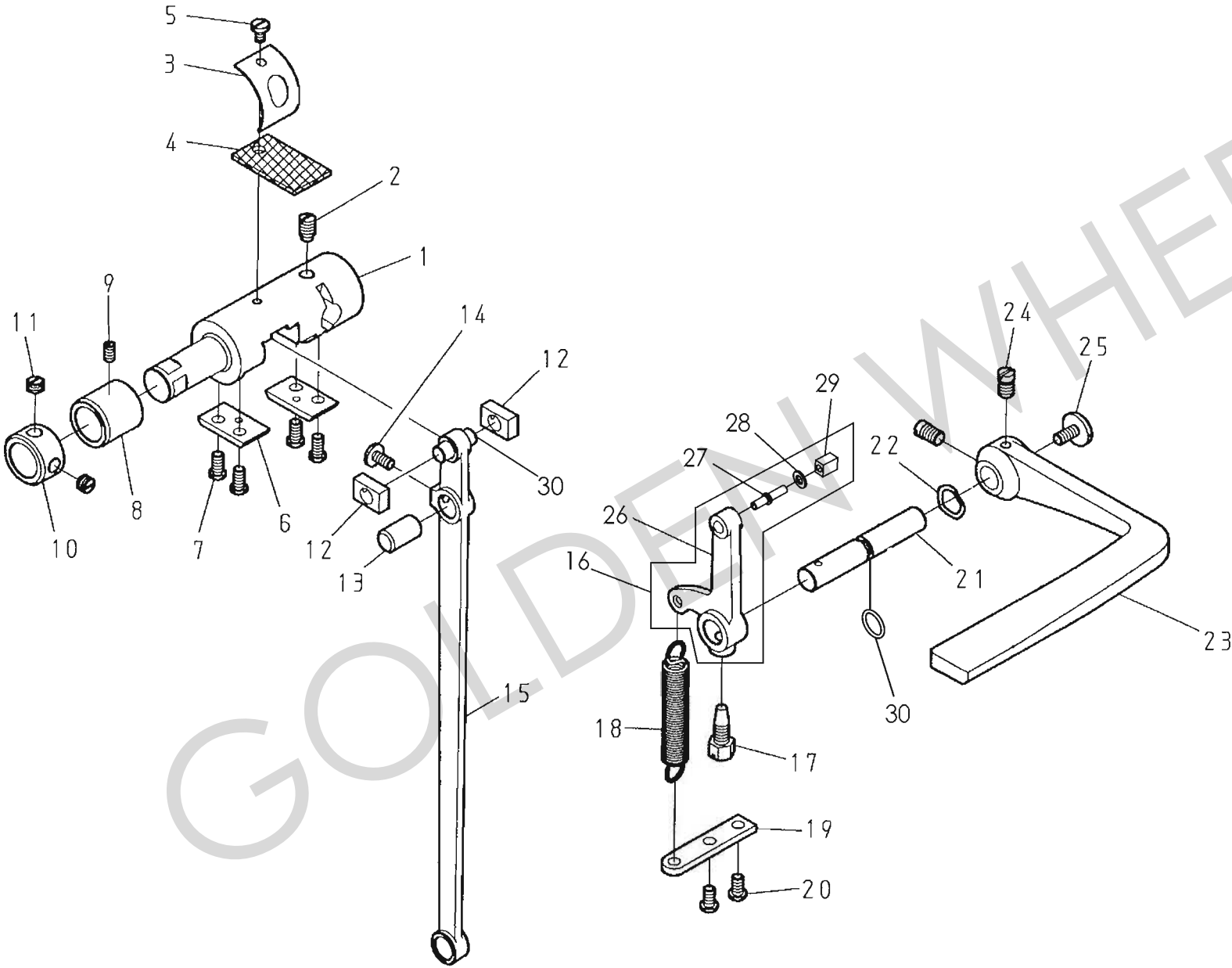


G. CS-8703、CS-8713 下部送料関係 (2/2) LOWER FEED MECHANISM COMPONENTS (2/2)



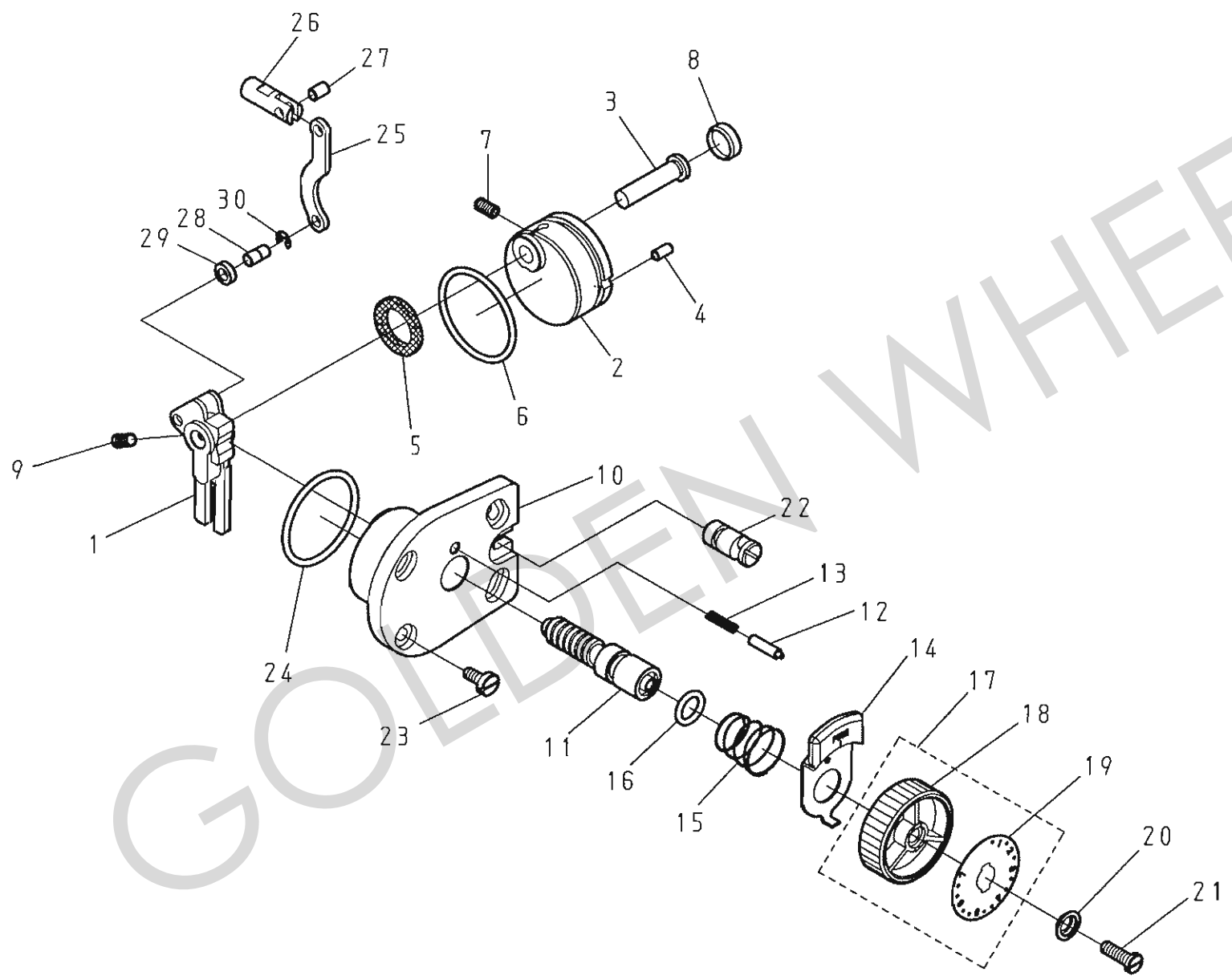
G. CS-8703、CS-8713 下部送料關係(2/2) LOWER FEED MECHANISM COMPONENTS(2/2)

REF.No	NOTE	零件號碼 Part No.	零件名稱	Name of Part	件數 8703	QTY 8713	備註 Remarks
1		8700169200	連桿	Feed Lifting Rock Link	1	0	
2		6220169200	連桿	Feed Lifting Rock Link	0	1	
3		ZSJ12009	螺絲	Screw 3/16-28*15	1	1	
4		8703160400	搖動軸	Feed Rocker Shaft	1	1	
5		8700160500	送料台連桿	Feed Bar Rod	1	0	
6		6220160500	送料台連桿	Feed Bar Rod	0	1	
7		ZSA20008	螺絲	Screw 5/16-24*7	1	1	
8		8360188200	定環	Thrust Collar	1	1	
9		ZSA11004	螺絲	Screw 11/64-40*3.5	2	2	
10		ZSB11069	螺絲	Screw 11/64-40*6	1	1	
11		6220165100	搖軸連桿	Rod	1	1	
12		ZSG16016	螺絲	Hinge Screw	2	2	
13		6220167900	套管	Bushing	1	1	
14		ZSA11005	螺絲	Screw 11/64-40*5.5	1	1	
15		6220169300	連桿	Feed Lifting Rock Link	1	1	
16		ZSJ12006	螺絲	Screw 3/16-28*12	1	1	
17		8710167800	搖動軸	Feed Rocker Shaft	1	1	
18		XB111004	油綿	Felt	2	2	
19		8710160800	送料台柄	Feed Connection Crank	1	1	
20		ZSG18006	螺絲	Hinge Screw	1	1	
21		WA079008	平墊圈	Washer	1	1	
22		ZSR18002	特殊螺帽	Nut	1	1	
23		ZSB16005	螺絲	Screw 1/4-24*20	1	1	
24		6120160800	搖動曲軸	Feed Rocker Shaft Crank	1	1	
25		8610167600	連接叉桿銷	Horizontal Feed Rod Shaft	1	1	
26		ZSB15032	螺絲	Screw 15/64-28*14	1	1	
27		ZSA15020	螺絲	Screw 15/64-28*11	1	1	
28		6220167900	套管	Bushing	1	1	
29		ZSA11005	螺絲	Screw 11/64-40*5.5	1	1	
30		E4044-0A	定環	Thrust Collar	1	1	
31		ZSA16010	螺絲	Screw 1/4-40*4.5	2	2	



H. CS-8703, CS-8713 縫目調節關係 (1/2) FEED ADJUSTMENT MECHANISM COMPONENTS (1/2)

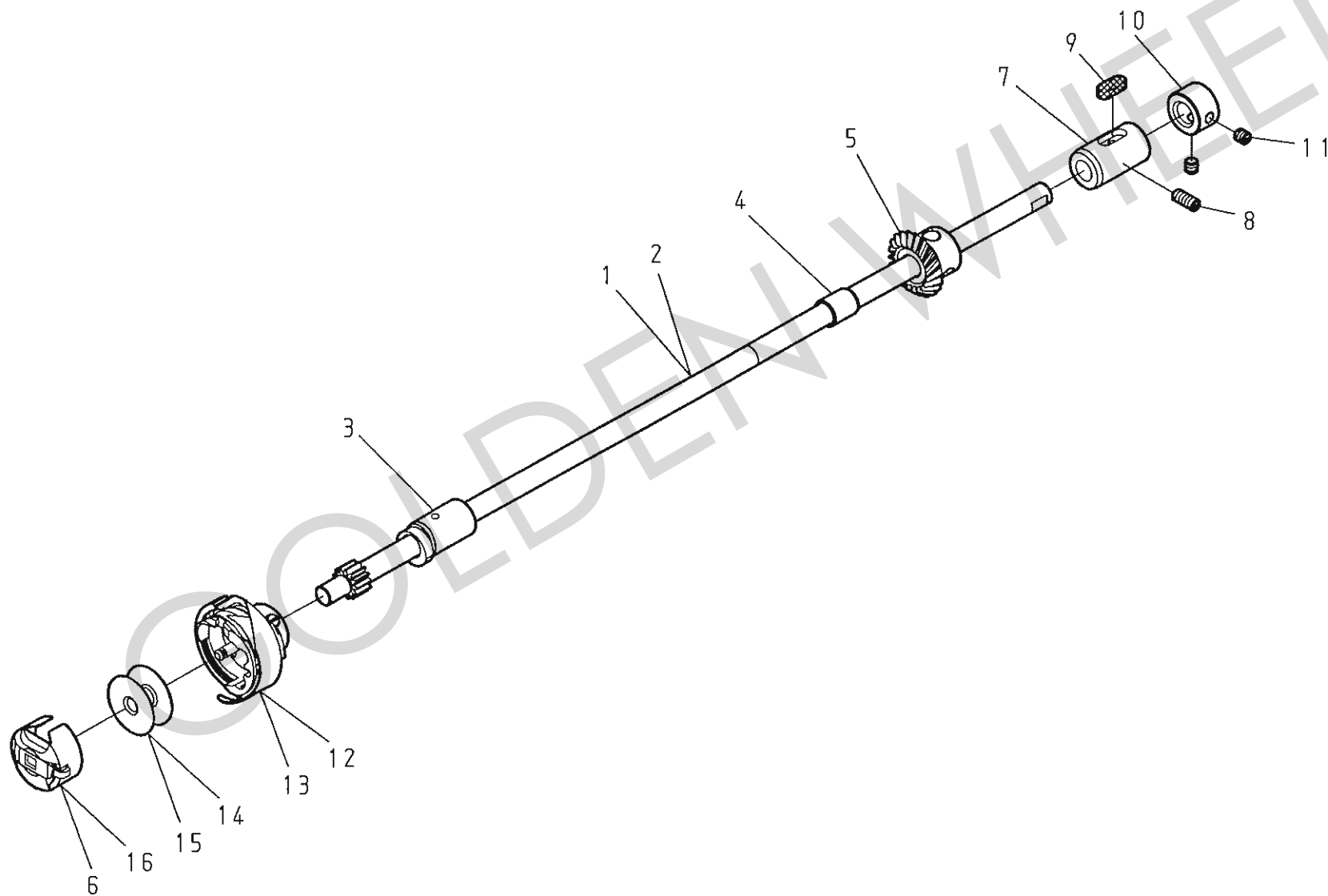
REF.No	NOTE	零件號碼	零件名稱	Name of Part	件數	Q'TY	備註
		Part No.			8703	8713	Remarks
1		6120167000	倒退固定軸	Reverse Block	1	1	
2		ZSA15037	螺絲	Screw 15/64-28*10.5	1	1	
3		5371353500	固定板	Plate	1	1	
4		XB320003	油綿	Felt	1	1	
5		ZSB09011	螺絲	Screw 9/64-40*6.5	1	1	
6		EJ4153-0A	滑塊固定板	Guide Plate	2	2	
7		ZSB11018	螺絲	Screw 11/64-40*9	4	4	
8		6120160600	套管	Bushing	1	1	
9		ZSA11007	螺絲	Screw 11/64-40*7	1	1	
10		6120167200	定環	Thrust Collar	1	1	
11		ZSA16010	螺絲	Screw 1/4-40*4.5	2	2	
12		EJ4152-0A	滑駒	Square Block	2	2	
13		6120167500	倒縫軸連結鎖	Pin	1	1	
14		ZSB11007	螺絲	Screw 11/64-40*7	1	1	
15		6120160900	連接叉桿	Horizontal Feed Rod Com.	1	1	
16		A1162-0A	倒縫曲柄(組)	Reverse Feed Crank Asm.	1	1	
17		ZSD15003	螺絲	Screw 15/64-28*16.5	1	1	
18		A1166-0A	彈簧	Spring	1	1	
19		8703166000	彈簧鈎	Spring Suspension	1	1	
20		ZSB11034	螺絲	Screw 11/64-40*8	2	2	
21		6120161800	倒縫軸	Lever Shaft	1	1	
22		WG000010	墊圈	Washer	1	1	
23		A1160-0A	倒針槓桿	Lever	1	1	
24		ZSB15019	螺絲	Screw 15/64-28*9	2	2	
25		ZSB12011	螺絲	Screw 3/16-28*10	1	1	
26		A1163-0A	倒縫曲柄	Reverse Feed Crank	1	1	
27		A1165-0A	連接軸	Shaft	1	1	
28		WA040009	墊片	Washer	1	1	
29		A1164-0A	連接塊	Block	1	1	
30		6120167100	連接軸	Shaft	1	1	
31		OPP00680	O 型環	Ring	1	1	



H. CS-8703、CS-8713 縫目調節關係 (2/2) FEED ADJUSTMENT MECHANISM COMPONENTS (2/2)

REF.No	NOTE	零件號碼	零件名稱	Name of Part	件數	Q'TY	備註
		Part No.			8703	8713	Remarks
1		8610161100	送料調節桿	Feed Regulator	1	1	
2		8610162200	套管	Bushing	1	1	
3		6120161500	送料調節桿銷	Feed Regulator Shaft	1	1	
4		YA050100	銷	Stopper Pin	1	1	
5		XB120001	油綿	Felt	1	1	
6		OPP04440	O形環 44.4	O-rings $\phi$ 44.4	1	1	
7		ZSA15020	螺絲	Screw 15/64-28*11	1	1	
8		8610118200	油蓋	Rubber Plug	1	1	
9		ZSB15006	螺絲	Screw 15/64-28*8.5	1	1	
10		6120162200	送料調節桿座	Stitch Dial Base	1	1	
11		6120164300	方牙棒	Feed Regulating Screw	1	1	
12		E1171-2A	定位銷	Pin	1	1	
13		E1158-0A	彈簧	Spring	1	1	
14		E1173-2A	操作板	Stopper Pin Releasing Lever	1	1	
15		E1174-2A	彈簧	Spring	1	1	
16		OP00100A	O形環 10A	O-rings $\phi$ 10	1	1	
17		8710164005	刻度盤(組)	Dial Asm.	1	1	
18		E1172-2B	刻度盤	Dial	(1)	(1)	
19		8710164100	刻度板	Dial plate	(1)	(1)	
20		C1174-0A	墊圈	Washer	1	1	
21		ZSB12017	螺絲	Screw 3/16-28*15	1	1	
22		6120164400	偏心銷	Eccentric Pin	1	1	
23		ZSB11026	螺絲	Screw 11/64-40*10	4	4	
24		OPP03550	O形環 35.5	O-rings $\phi$ 35.5	1	1	
25		8703168200	送料連桿	Feed Connecting Link	1	1	
26		6120168300	固定銷	Set Pin	1	1	
27		6120168400	銷	Pin	1	1	
28		6120168500	銷	Pin	1	1	
29		WA060013	平墊圈	Washer	1	1	
30		RE000040	E型扣環	E-Shaped Snap Rings (4mm)	1	1	

I. CS-8703、CS-8713 下軸關係 HOOK DRIVE SHAFT COMPONENTS



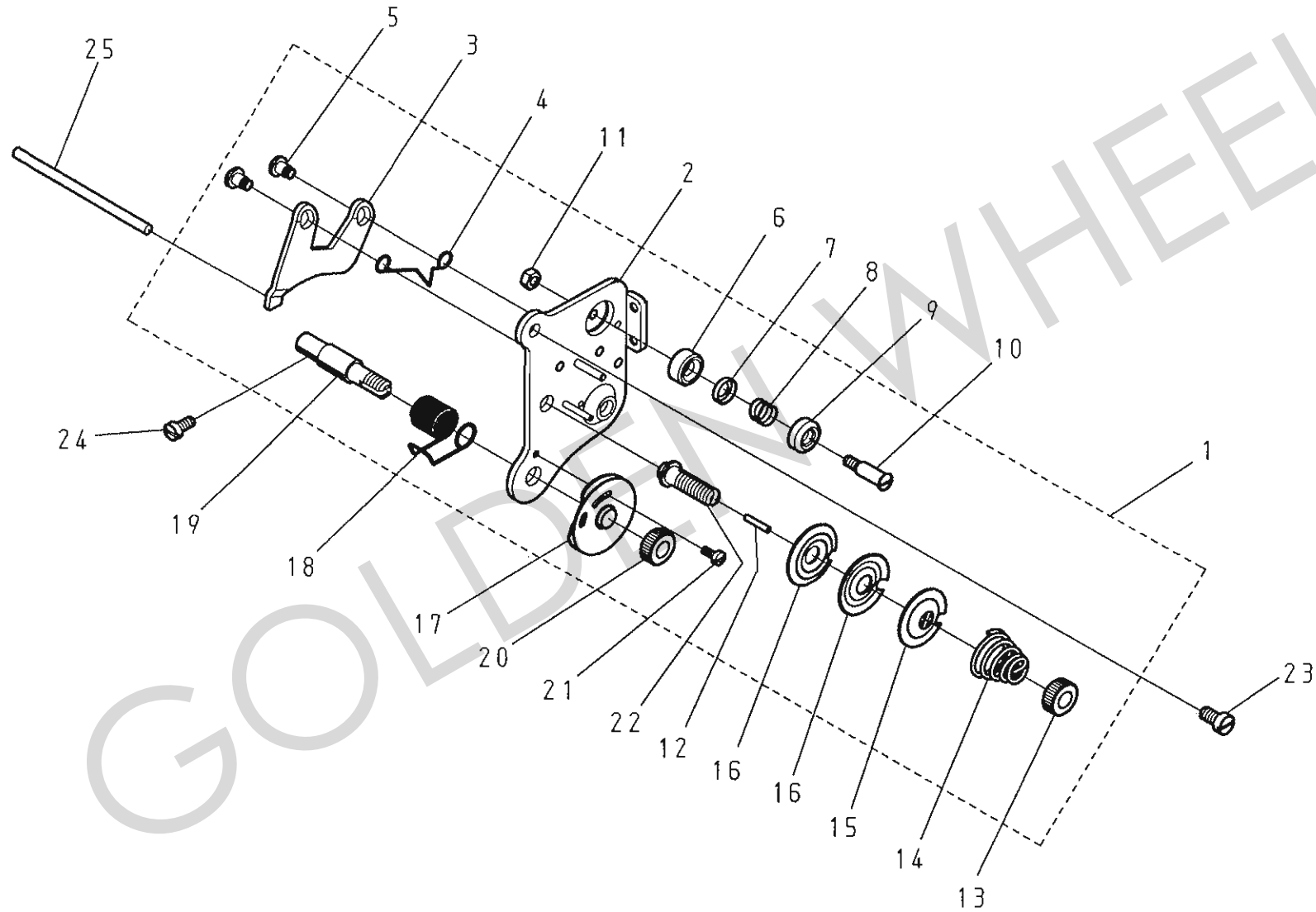
1. CS-8703, CS-8713 下軸關係 HOOK DRIVE SHAFT COMPONENTS

REF.No	NOTE	零件號碼 Part No.	零件名稱	Name of Part	件數 8703	Q'TY 8713	備註 Remarks
1		8703180100	下軸	Hook Driving Shaft	1	0	
2		8713180100	下軸	Hook Driving Shaft	0	1	
3		8710180300	下軸套管(左)	Bushing, Front	1	1	
4		6220180400	下軸套管(中)	Bushing, Center	1	1	
5		A4021-0A	斜齒輪(小)	Screw Gear, Back	1	1	
6		Q6105-1A	梭殼	Bobbin Case	0	1	
7		8703180500	下軸套管(右)	Bushing, Rear	1	1	
8		ZSA11016	螺絲	Screw 11/64-40*11	1	1	
9		XB205002	油綿	Felt	1	1	
10		E4014-0A	定環	Thrust Collar	1	1	
11		ZSA11011	螺絲	Screw 11/64-40*4.5	2	2	
12		L6100-0A	梭頭	Hook	1	0	
13		Q6100-1A	梭頭	Hook	0	1	
14		L7006-0A	梭仔	Bobbin	1	0	
15		E7006-1A	梭仔	Bobbin	0	1	
16		L6105-0A	梭殼	Bobbin Case	1	0	

GOLDEN WHEEL



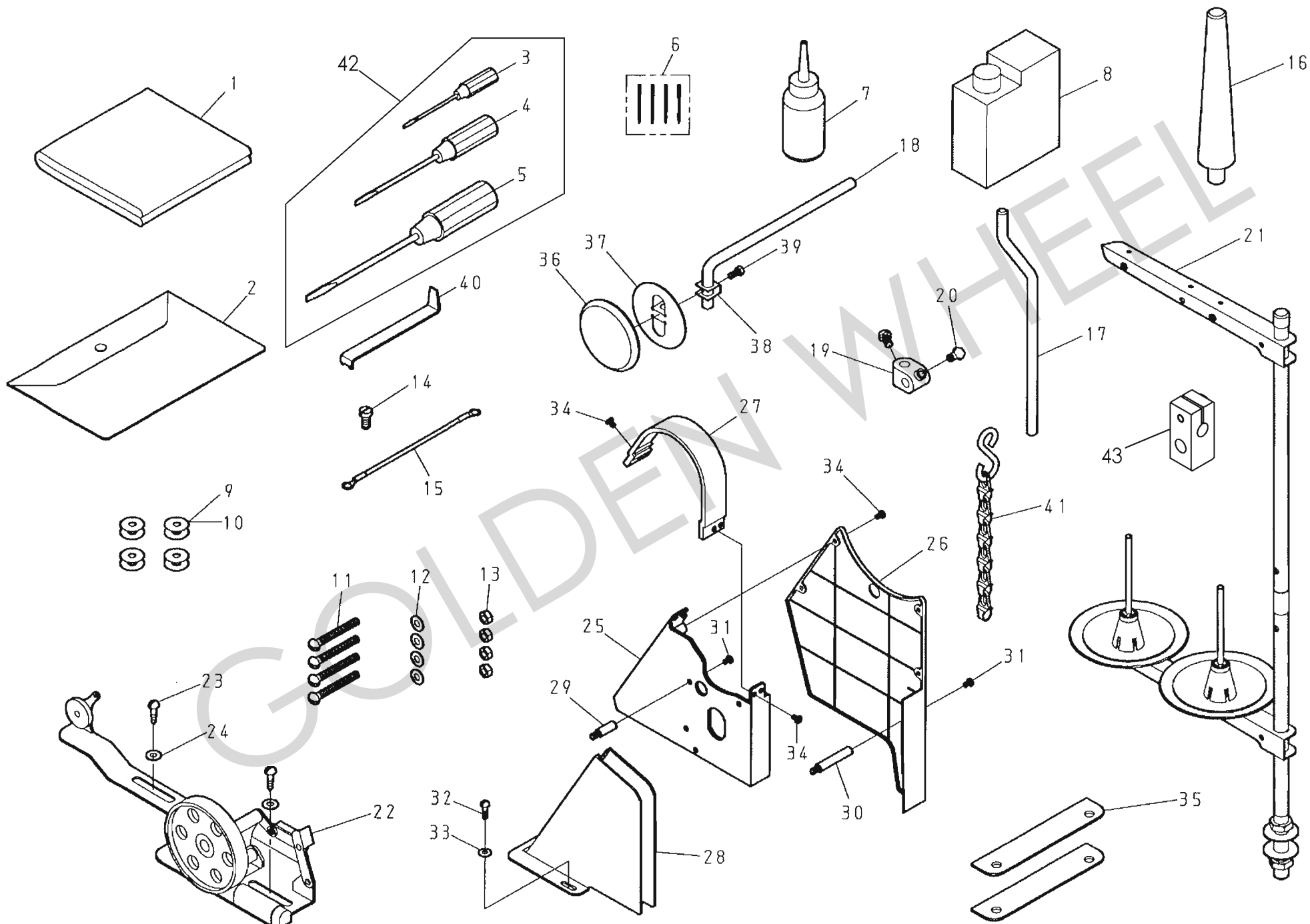
J. CS-8703、CS-8713 縫線壓力調節關係 UPPER THREAD TENSION REGULATOR  
MECHANISM COMPONENTS



J. CS-8703、CS-8713 縫線壓力調節關係 UPPER THREAD TENSION REGULATOR MECHANISM COMPONENTS

REF.No	NOTE	零件號碼 Part No.	零件名稱	Name of Part	件數 8703	Q'TY 8713	備註 Remarks
1		EJ1020-0A	上線壓力板(組)	Thread Tension Regulator Asm.	1	1	
2		A1038-0A	上線壓力板	Mounting Plate Asm.	(1)	(1)	
3		EJ1037-0A	彈簧板	Tension Releasing Plate	(1)	(1)	
4		A1036-0A	壓板彈簧	Tension Releasing Spring	(1)	(1)	
5		ZSG09004	螺絲	Hinge Screw	(2)	(2)	
6		A1030-0A	過線孔台	Thread Guide Disk	(1)	(1)	
7		A1031-0A	過線孔圓盤	Thread Guide Disk	(1)	(1)	
8		A1032-0A	導線彈簧	Spring	(1)	(1)	
9		A1033-0A	過線孔內蓋	Thread Guide Bracket	(1)	(1)	
10		ZSG09005	螺絲	Hinge Screw	(1)	(1)	
11		ZSL09001	螺帽	Nut 9/64-40	(1)	(1)	
12		EJ1028-0A	緩線鎖	Tension Releasing Pin (small)	(1)	(1)	
13		ZSN16002	螺帽	Tension Thumb Nut 1/4-40	(1)	(1)	
14		EJ1021-0A	彈簧	Tension Spring	(1)	(1)	
15		A1034-0A	線調整壓盤	Tension Regulator Presser Disk	(1)	(1)	
16		A1035-0A	壓力板	Tension Regulator Disk	(2)	(2)	
17		A1024-1A	過線盤組	Tension Controller Disk Set	(1)	(1)	
18		EJ1027-0A	彈簧	Thread Take-up Spring	(1)	(1)	
19		EJ1026-0A	調整螺絲棒	Tension Stud	(1)	(1)	
20		ZSN16002	螺帽	Tension Thumb Nut 1/4-40	(1)	(1)	
21		ZSB06001	螺絲	Screw 3/32-56*6	(1)	(1)	
22		A1026-1A	壓力調整螺絲棒	Shread Tension Stud	(1)	(1)	
23		ZSB11012	螺絲	Screw 11/64-40*8	1	1	
24		ZSB09007	螺絲	Screw 9/64-40*7.5	1	1	
25		8233312200	緩線鎖	Tension Releasing Pin	1	1	

K. CS-8703、CS-8713 附件關係 ACCESSORIES



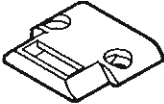
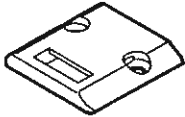
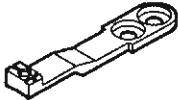
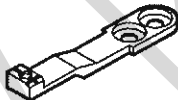

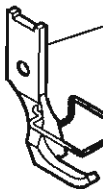
K. CS-8703、CS-8713 附件關係 ACCESSORIES

REF.No	NOTE	零件號碼 Part No.	零件名稱	Name of Part	件數 8703	Q'TY 8713	備註 Remarks
1		C7001-0A	車頭蓋	Cover	1	1	
2		A7000-0A	工具袋	Accessory Box	1	1	
3		A7010-0A	螺絲起子(小)	Screw Driver (small)	1	1	
4		A7010-1A	螺絲起子(中)	Screw Driver (middle)	1	1	
5		A7010-2A	螺絲起子(大)	Screw Driver (Large)	1	1	
6		INDP×17-21	針	Needle DP×17-21	4	4	
7		A7012-1A	油壺(中)	Oiler	1	1	
8		A7012-2A	油壺(大)	Oil Can	1	1	
9		L7006-0A	梭仔	Bobbin	4	0	
10		E7006-1A	梭仔	Bobbin	0	4	
11		ZMQ08001	螺絲	Screw M8×1.25*65	4	4	
12		WA089001	平墊圈	Washer	4	4	
13		ZML08001	螺帽	Nut M8×1.25	4	4	
14		ZSB11011	螺絲	Screw 11/64-40*9	1	1	
15		6120914005	印記線	Ground Wire Asm.	1	1	
16		6220119000	枕木	Head Rest Wood	1	1	
17	#01	6220344700	腳押曲桿	Knee Lever Rod	1	1	
18	#01	6220341900	腳押曲桿	Knee Lever Rod	1	1	
19	#01	A7034-0A	連接器	Knee Lifter Crank	1	1	
20	#01	ZSD20007	螺絲	Screw 5/16-18*16	2	2	
21		J7050-0A-A	線架	Thread Stand	1	1	
22		A7040-0C	捲線器組	Bobbin Winder	1	1	
23		ZMT05001	螺絲	Wood Screw	2	2	
24		WA059003	平墊圈	Washer	2	2	
25		8230335101	皮帶蓋A	Belt Cover A	1	1	
26		8230335201	皮帶蓋B	Belt Cover B	1	1	
27		8230335502	皮帶蓋C	Belt Cover C	1	1	
28		8230335801	皮帶蓋D	Belt Cover D	1	1	
29		6220335300	皮帶蓋固定螺絲(A)	Belt Cover Stud (A)	3	3	
30		8110335700	皮帶蓋固定螺絲(B)	Belt Cover Stud (B)	1	1	
31		ZSB11041	螺絲	Screw 11/64-40*7	4	4	
32		ZMT05003	螺絲	Wood Screw	2	2	
33		WA059003	平墊圈	Washer	2	2	
34		ZMB04009	螺絲	Screw M4×0.7*6	8	8	
35		6220913500	防振橡膠	Vibration Preventing Rubber	2	2	
36	#01	A7037-0A	腳弓大餅	Knee Guird	1	1	
37	#01	A7037-1A	腳弓餅支架	Knee Plate	1	1	
38	#01	A7036-0A	固定支架	Retainer	1	1	
39	#01	ZSD15007	螺絲	Screw 15/64-28*14	1	1	
40		87109133K0	特殊起子	Screw Driver	1	1	
41	#02	B7060-0A	鏈子(組)	Chain Assy.	1	1	
42		A7010-0Z	螺絲起子組	Screw Driver Asm.	1	1	
43		5100342000	連接器	Knee Lifter Crank	1	1	

Note(注記)

#01. . . . . Knee Lifter Specification Parts 膝上仕樣部品  
 #02. . . . . Pedal Lifter Specification Parts 踏板仕樣部品

L. CS-8703、CS-8713 針位圖號詳表 GAUGE PARTS LIST

	CS-8703 (小釜用)	CS-8713 (大釜用)
針板 THROAT PLATE		
	8700111301	8710111301
狗齒 FEED DOG		
	8700161402	8710161402
內押腳 WALKING FOOT		
	8710151000	
外押腳 PRESSUER FOOT	 <span style="margin-left: 20px;">8710153000</span> <span style="margin-left: 100px;">8710152500</span>	
	8710153004	

M. CS-8703,CS-8713 零件號碼與頁數對照表(1/3) NUMERICAL PARTS-LIST (1/3)

零件號碼 Part No.	頁數 PAGE	零件號碼 Part No.	頁數 PAGE	零件號碼 Part No.	頁數 PAGE	零件號碼 Part No.	頁數 PAGE
A7010-0Z	35 - 42	6220163300	23- 24	F1076-0A	11- 2	8700111301	7- 4
4710340800	21- 11	6220164400	23- 31	8230144203	15- 20	8700160500	25- 5
5371167400	9- 23	6220165100	25- 11	8230150401	17- 3	8700161402	23- 15
5371353500	27- 3	6220166100	23- 18	8230335101	35- 25	8700169200	25- 1
6120117000	5- 15	6220167900	25- 13	8230335201	35- 26	87001711K0	23- 22
6120117100	7- 23	6220167900	25- 28	8230335502	35- 27	87001712K0	23- 6
6120117300	5- 13	6220169200	25- 2	8230335801	35- 28	87001713K0	23- 1
6120117400	5- 7	6220169300	25- 15	8230340200	17- 20	8700183600	7- 7
5100342000	35 - 43	6220169400	23- 33	8233110900	3- 4	8713190101	11- 8
6120117400	7- 12	6220169500	23- 30	8233143601	15- 12	8703110300	7- 18
A1013-1A	9- 39	6220169600	23- 25	8233143700	3- 7	8713110400	7- 9
6120120302	9- 28	6220169700	23- 27	823314400Q	9- 11	8703110505	5- 1
6120160600	27- 8	6220169800	23- 28	8233144501	9- 8	8703111000	3- 1
6120160800	25- 24	6220170900	23- 5	8233144702	15- 1	8703120100	9- 16
6120160900	27- 15	6220171400	23- 9	8233144801	15- 8	8703141700	15- 17
6120161500	29- 3	6220171500	23- 11	8233145101	15- 9	8703160400	25- 4
6120161800	27- 21	6220180400	31- 4	ZMG06019	15- 3	8703166000	27- 19
6120162200	29- 10	6220183600	7- 8	8710152500	17 - 24	8703168000	5- 8
6120164300	29- 11	6220183700	23- 13	8233150200	17- 12	8703168200	29- 25
6120164400	29- 22	6220335300	35- 29	8233150500	17- 5	8703180100	31- 1
6120167000	27- 1	8110335700	35- 30	8233151900	15- 14	8703180500	31- 7
6120167200	27- 10	6220341700	19- 15	8233152000	15- 13	8703340400	17- 23
6120167500	27- 13	6220341900	35- 18	8233312200	33- 25	8703341600	19- 8
6120168300	29- 26	6220342000	19- 1	8233343000	17- 16	8703341701	21- 4
6120168400	29- 27	6220342200	19- 7	8233344000	17- 9	8703342900	19- 16
6120168500	29- 28	6220344200	19- 5	8360188200	25- 8	8703342900	21- 5
6120914005	35- 15	6220344700	35- 17	8713120800	9- 1	8703343400	19- 10
6220112700	7- 19	6220913500	35- 35	8370311605	3- 23	8703343800	19- 12
6220112800	7- 21	8110120200	9- 6	8370341100	17- 18	8703343800	21- 2
6220117900	5- 14	8110120301	9- 13	8610118200	29- 8	8703344200	21- 7
8703343900	19 - 19	8110120400	9- 26	8610161100	29- 1	8703344400	21- 9
6220118100	21- 1	8110132000	9- 35	8610162200	29- 2	8703351005	9- 42
6220119000	35- 16	8110132100	9- 32	8610167600	25- 25	87101106K0	7- 2
6220119100	7- 15	8110270401	13- 12	8610270100	13- 1	8710111301	7- 5
6220122000	9- 21	8110270801	13- 19	F1332-0A	13- 20	8710118400	5- 17
62201601K0	23- 19	8110270814	13- 18	8610271100	13-17	8710151000	15- 18
6220160500	25- 6	8110272801	13- 22	8700110600	7- 1	8710153000	17- 14

M. CS-8703,CS-8713 零件號碼與頁數對照表(2/3) NUMERICAL PARTS-LIST (2/3)

零件號碼 Part No.	頁數 PAGE	零件號碼 Part No.	頁數 PAGE	零件號碼 Part No.	頁數 PAGE	零件號碼 Part No.	頁數 PAGE
8710160800	25- 19	A1162-0A	27- 16	E1172-2B	29- 18	L7006-0A	31- 14
8710161402	23- 16	A1166-0A	27- 18	E1173-2A	29- 14	L7006-0A	35- 9
8710164005	29- 17	A4020-0C	9- 40	E1174-2A	29- 15	OAGM111503	15- 4
8710164100	29- 19	A4021-0A	31- 5	E4014-0A	31- 10	OP00100A	29- 16
8710167800	25- 17	A7000-0A	35- 2	E4044-0A	9- 17	OPP01250	19- 4
87101711K0	23- 23	A7010-0A	35- 3	E4044-0A	25- 30	OPP03550	29- 24
87101712K0	23- 7	A7010-1A	35- 4	E7006-1A	31- 15	OPP04440	29- 6
87101713K0	23- 2	A7010-2A	35- 5	E7006-1A	35- 10	Q1070-0A	11- 1
87101716K0	23- 20	A7012-1A	35- 7	EJ1014-0A	3- 11	Q4436-1A	13- 26
87101717K0	23- 21	A7012-2A	35- 8	EJ1017-0A	3- 12	Q6100-1A	31- 13
8710180300	31- 3	A7034-0A	35- 19	EJ1020-0A	33- 1	Q6105-1A	31- 6
XA300065	11- 9	A7036-0A	35- 38	EJ1021-0A	33- 14	RE000030	23- 26
8710271000	13- 24	A7037-0A	35- 36	EJ1026-0A	33- 19	RE000040	29- 30
87109133K0	35- 40	A7037-1A	35- 37	EJ1027-0A	33- 18	RE000060	13- 27
8713180100	31- 2	A7040-0A	35- 22	EJ1028-0A	33- 12	WA049003	5- 11
A1013-0B	5- 3	B1050-0A	3- 14	EJ1037-0A	33- 3	WA049005	13- 14
A1013-0D	5- 5	8703106100	11- 6	EJ1055-0A	3- 24	WH206009	15- 5
A1013-0A	5- 9	B1062-0A	11- 12	EJ1056-0A	3- 25	WA040009	27- 28
A1013-1A	5- 6	B1074-0A	11- 16	EJ1057-0A	3- 26	WA059003	35- 24
A1024-1A	33- 17	B1080-0A	11- 14	8713270500	13- 9	WA059003	35- 33
A1026-1A	33- 22	B1091-0A	13- 4	8703150100	17- 4	WA060013	29- 29
A1030-0A	33- 6	B1274-0A	17- 8	EJ1200-0A	17- 10	WA079008	25- 21
A1031-0A	33- 7	B1280-0A	15- 21	EJ4109-0A	7- 17	WA089001	35- 12
A1032-0A	33- 8	B1283-0A	15- 15	EJ4152-0A	27- 12	WG000010	27- 22
A1033-0A	33- 9	B1284-0A	15- 16	EJ4153-0A	27- 6	XA200250	11- 10
A1034-0A	33- 15	B1285-0A	13- 7	EJ4434-2A	17- 21	XA300020	11- 15
A1035-0A	33- 16	8703145000	15- 7	F1063-0A	3- 9	XA300020	13- 5
A1036-0A	33- 4	B1333-0A	13- 15	A1163-0A	27- 26	XA300030	11- 13
A1038-0A	33- 2	B1334-0A	13- 16	INDP × 17-21	11- 5	XA300040	13- 3
A1051-0A	3- 16	B7060-0A	35- 41	INDP × 17-21	35- 6	XA300040	13- 23
7162110700	11- 12	C1052-0A	3- 18	J1041-0A	3- 29	XA300055	9- 33
A1108-0C	9- 19	C1054-0A	3- 21	J7050-0A	35- 21	A1164-0A	27- 29
A1109-0C	9- 30	8713190800Q	11- 11	L4114-3A	23- 8	A1165-0A	27- 27
A1113-0B	9- 36	C1174-0A	29- 20	L6020-3A	23- 10	XA300125	13- 2
A1130-0A	9- 10	C7001-0A	35- 1	L6063-2A	23- 34	XB111004	25- 18
A1130-0A	9- 25	E1158-0A	29- 13	L6100-0A	31- 12	XB114001	5- 4
A1160-0A	27- 23	E1171-2A	29- 12	L6105-0A	31- 16	XB120001	29- 5

M. CS-8703,CS-8713 零件號碼與頁數對照表(3/3) NUMERICAL PARTS-LIST (3/3)

零件號碼 Part No.	頁數 PAGE	零件號碼 Part No.	頁數 PAGE	零件號碼 Part No.	頁數 PAGE	零件號碼 Part No.	頁數 PAGE
A1019-0A	3- 31	ZSA15012	11- 7	ZSB11011	35- 14	ZSB20017	15- 22
XB205002	31- 9	ZSA15017	9- 5	ZSB11012	33- 23	ZSC09009	3- 22
XB207001	9- 24	ZSA15019	9- 4	ZSB11017	5- 2	ZSB09044	7- 3
XB207002	9- 9	ZSA15020	9- 14	ZSB11017	5- 10	ZSC09012	7- 10
XB210001	9- 7	ZSA15020	9- 34	ZSB11018	27- 7	ZSC09021	3- 19
XB210001	9- 15	ZSA15020	9- 38	ZSB11026	29- 23	ZSC09021	3- 20
XB210001	9- 27	ZSA15020	17- 13	ZSB11034	27- 20	ZSC11003	7- 6
XB316001	13- 11	ZSA15020	25- 27	ZSB11041	35- 31	ZSD11001	13- 10
XB320003	27- 4	ZSA15020	29- 7	ZSB11047	23- 36	ZSD15003	27- 17
YA035075	3- 3	ZSA15023	13- 6	ZSB11051	23- 3	ZSD15007	35- 39
YA050100	29- 4	ZSA15037	27- 2	ZSB11069	25- 10	ZSD16007	15- 2
YA080280	7- 14	ZSA16010	9- 18	ZSB11086	17- 6	ZSD20007	35- 20
YB030020	13- 21	ZSA16010	25- 31	ZSB12006	3- 5	ZSF32001	17- 1
YD030015	23- 4	ZSA16010	27- 11	ZSJ12006	25- 16	ZSG08003	3- 27
YD060024	3- 13	ZSA16011	9- 20	ZSB12008	9- 43	ZSG09004	33- 5
YD060056	7- 11	ZSA16011	9- 31	ZSB12009	25- 3	ZSG09005	33- 10
ZMB04009	35- 34	ZSA16011	9- 41	ZSB12011	27- 25	ZSG11028	23- 35
ZMH08002	19- 3	ZSA11004	19- 18	ZSB12017	29- 21	ZSG15040	19- 11
ZMH08003	19- 2	ZSH16004	9- 12	ZSB12030	3- 8	ZSG16006	17- 7
ZMJ04002	13- 13	ZSA20008	25- 7	ZSB15006	29- 9	ZSG16016	25- 12
ZML06002	3- 15	ZSB06001	33- 21	ZSB15009	3- 6	ZSG16025	21- 12
ZML08001	35- 13	ZSB06002	11- 3	ZSB15009	13- 25	ZSG18006	25- 20
ZMQ08001	35- 11	ZSB06004	23- 14	ZSB15010	3- 10	ZSG20004	17- 17
ZMT05001	35- 23	ZSB08002	11- 4	ZSB15032	25- 26	ZSG20018	7- 20
ZMT05003	35- 32	ZSB08010	23- 29	ZSB15019	27- 24	ZSH16001	9- 22
ZSA11007	3- 17	ZSB08016	23- 12	ZSB15026	9- 29	ZSK12003	17- 22
ZSA11004	25- 9	ZSB08041	23- 17	ZSB15028	19- 17	ZSK12026	17- 11
ZSA11005	25- 14	ZSB09002	13- 8	ZSB15028	21- 6	ZSK16002	15- 10
ZSA11005	25- 29	ZSB09003	17- 15	ZSB15034	7- 13	ZSL09001	33- 11
ZSA11007	19- 6	ZSB09005	3- 30	ZSB15034	7- 22	ZML06001	15- 6
ZSA11007	19- 13	ZSB09007	33- 24	ZSB16005	25- 23	ZSL16001	15- 11
ZSA11007	21- 3	ZSB09011	3- 28	ZSB16011	17- 19	ZSN16002	33- 13
ZSA11007	21- 8	ZSB09011	27- 5	ZSB18001	9- 2	ZSN16002	33- 20
ZSA11007	27- 9	ZSB09017	3- 2	ZSB18001	19- 9	ZSN32001	17- 2
ZSA11011	31- 11	ZSB11003	11- 17	ZSB18001	21- 10	ZSR18002	25- 22
ZSA11012	23- 32	ZSB11007	27- 14	ZSB18002	9- 3	6120167100	27- 30
ZSA11016	31- 8	ZSB11009	15- 19	ZSB20014	7- 16	OPP00680	27- 31

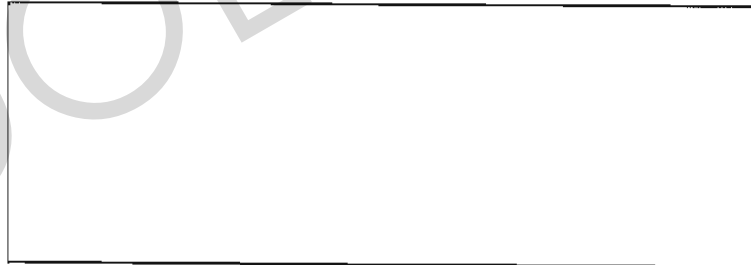


M. CS-8703,CS-8713 零件號碼與頁數對照表(3/3) NUMERICAL PARTS-LIST (3/3)

零件號碼 Part No.	頁數 PAGE	零件號碼 Part No.	頁數 PAGE	零件號碼 Part No.	頁數 PAGE	零件號碼 Part No.	頁數 PAGE
8703T-001	3- 31						
8703T-001	3- 32						
WARN000108-A	5- 18						
WARN000310	5- 19						
YD060028	5- 12						
YD060036	5- 16						

GOLDEN WHEEL

GOLDEN WHEEL



No.8703H02

金輪牌 GOLDEN WHEEL  
CHEE SIANG INDUSTRIAL CO.,LTD

No.32,Wu Chuan 7th Road, Wu Ku Industrial Area,  
Wu Ku Hsiang 24248, Taipei Hsien, Taiwan  
Tel:886-2-22999518 Fax:886-2-22999519

※Appear and specification listed in this instruction manual are subjected to change without notice.

※This parts list is edited and printed in accordance with the product specifications as of January 2002. 2002.01 Printed in Taiwan