

PARTS BOOK

DPK-5

포스트 베드, 1본침 본봉 지그재그 재봉기
Post Bed, Single-Needle Lock
Stitch Zig Zag Sewing Machines



PME-120925

SunStar CO., LTD.

INFORMATION

A. Parts Book 구성 Structure of Part Book

① **A** Machine Body Mechanism
두부 및 외장 관계

④ ⑤ ⑥ ⑦ ⑧ ⑨

No.	Parts No.	Note	Name of Parts	품 명	Q'ty		Assembly No.
					BS	BF	
A-52	425005-3001		Bobbin Winder Lever	실감기 레버	1	1	
A-53	435012-3001		Bobbin Winder Adjusting Plate	실감기 조절판	1	1	
A-54	SC-6130-1230		Screw(1.6" n=40)	볼트(1.6" n=40)	1	1	
A-55	02-611W-2302		Washer	와셔	1	1	
A-56	435025-3001		Bobbin Winder Lever Shaft	실감기 레버 축	1	1	
A-57	435049-3001		Bobbin Winder Adjusting Cam	실감기 조절 캠	1	1	
A-58	02502C-4113		Screw(M4xR0.7)	볼트(M4)	1	1	
A-59	04-600C-3710		Washer(호칭명 S)	와셔(호칭명 S)	2	2	
A-60	435078-3001		Bobbin Winder Action Plate	실감기 작동판	1	1	
A-61	41-60AA-1201		Bobbin Winder Action Body	실감기 작동체	1	1	
A-62	40-90TW-1600		Washer	와셔	2	2	
A-63	435025-3001		Bobbin Winder Spring	실감기 인장 스프링	1	1	
A-64	435025-3001		Bobbin Stopper	보빈 스톱퍼	1	1	
A-65	435025-3001		Screw	볼트	5	5	
A-66	435025-3001		Bobbin Stand	보빈 스탠드	1	1	
A-67	435025-3001		Bobbin Winder Mm	실감기 베스	1	1	
A-68	SC-6130-2302		Screw(1.6" n=40)	고형베스 양측 볼트(1.6" n=40)	2	2	
A-69	435025-3001		Themed Tension Adjusting Ass'y	실감기 실감기 조절장치(조)	1Set	1Set	
A-70	435025-3001		Themed Tension Adjusting Shaft	실감기 실감기 조절 축	1	1	
A-71	435025-3001		Themed Guide Plate	실감기 판	1	1	
A-72	40-20AA-1230		Themed Tension Disk	실감기 접시	2	2	
A-73	40-303G-123A		Themed Tension Spring	실감기 조절 스프링	1	1	
A-74	40-90TW-1230		Themed Tension Spring Stopper	실감기 조절 스프링 스톱퍼	1	1	
A-75	40-92AA-1230		Spring Cover	스프링 커버	1	1	
A-76	40-20AA-1230		Themed Tension Nut	실감기 조절 캠 너트	1	1	
A-77	SN-6121-7400		Nut(15/64" n=20)	실감기 조절 축 너트	1	1	
A-78	035048-3001		Safety Plate Ass'y	안전판(조)	1Set	1Set	
A-79	035048-3001		Safety Plate	안전판	1	1	
A-80	035048-3001		Safety Plate Bracket	안전판 브라켓	1	1	
A-81	035048-3001		Safety Plate Holder	안전판 홀더	1	1	
A-82	035048-3001		Safety Plate Flange Screw	안전판 볼트	1	1	
A-83	SN-6101-7400		Nut(1/4" n=20)	너트	3	3	
A-84	40-90TW-1600		Washer	와셔	1	1	
A-85	035048-3001		Safety Plate Spring	안전판 스프링	1	1	
A-86	035048-3001		Safety Plate Spring Hook	안전판 스프링 걸이	1	1	
A-87	SN-6111-7400		Nut(1/4" n=20)	너트	1	1	
A-88	GP-0226-00		Ball Cover	볼트커버	1	1	
A-89	SC-6067-1230		Screw(11/64" n=40)	볼트(11/64" n=40)	7	7	
A-90	GP-0223-00		X-Driving Motor Cover	X 구동 모터 커버	1	1	
A-91	GP-0222-00		Side Cover	옆뚜껑	1	1	
A-92	GP-0221-00		Side Cover Gasket	옆뚜껑 가스켓	1	1	

- ① 관계 별 고유 코드
Unique code by mechanism
- ② 관계 별 고유 명칭
Unique name by mechanism
- ③ 관계도
Explode view
- ④ Ref. No. : 파트별 고유 식별 번호
Unique identification number by part
- ⑤ Parts No. : 고유 제품 코드
Unique Product code

- ⑥ Note. : 공지사항 표기 및 메모
Refers to notice and memo
- ⑦ 품명 : 파트의 고유 품명
Name of Part : Unique name of parts
- ⑧ Q'ty : 파트의 수량
The number of parts
- ⑨ Assembly no. : 조(組) 파트의 식별 번호
Unique identification number by set part

Ex)

구분 Category	Code	비고 Category
구 부품 Old part	01-030C-1230	
신 부품 New part	AS-000000-00	조(組)파트 Set parts
	GP-000000-00	기구적 파트 Instrumental parts
	EP-000000-00	전기적 파트 Electrical parts

WARNING

1. 조에 속한 파트는 개별 조립 시 제품의 파손 또는 재봉 불량 발생될 수 있어 해당 파트에 대한 주문 시에는 조 품목으로만 구입이 가능합니다.
 2. 본 책자는 Part Book으로 제작되었으므로 매뉴얼로 사용 불가합니다.
 3. 사전 예고 없이 사양이 변경 될 수도 있습니다.
-
1. The parts classified as ass'y items may cause damage to the machine or bad sewing when they are separately assembled. Hence, when they are ordered, they can be purchased as ass'y items only.
 2. This is a parts book. It cannot be used as a manual.
 3. Parts are Subject to change in Design Without Prior Notice.

Note

- 썬스타 제품의 부품은 아래 인터넷주소로 접속하시어 신청할 수 있습니다.
<http://www.sunstares.com>
 - 가입된 회원께서는 썬스타 포탈 사이트에 로그인후 필요한 부품을 신청할 수 있습니다.
 - 부품관리-발주관리-발주등록 항목에서 부품번호와 신청수량을 입력하여 등록하시면 발주가 됩니다.
 - 부품번호를 모르시는 경우 파츠북 조회를 클릭하시고 사용하는 기종을 검색하여 선택하시면 해당 기종의 파츠북을 조회할 수 있습니다.
 - 파츠북은 관계별로 구분되어 있으며 관계를 알고 있다면 부품 찾기가 용이합니다.
-
- You can make an order for the parts of Sunstar machine to connect internet address.
<http://www.sunstares.com>
 - You can request for parts you want after login if you are a registered member.
 - In parts Management - Order Management - Order Registration entry, you can place an order by entering the part number and quantity.
 - If you don't know the parts number, click the parts book menu bar.
In a download list, you can read parts book by searching model you use.
 - This parts book is classified by the mechanism, therefore you can find part easily.

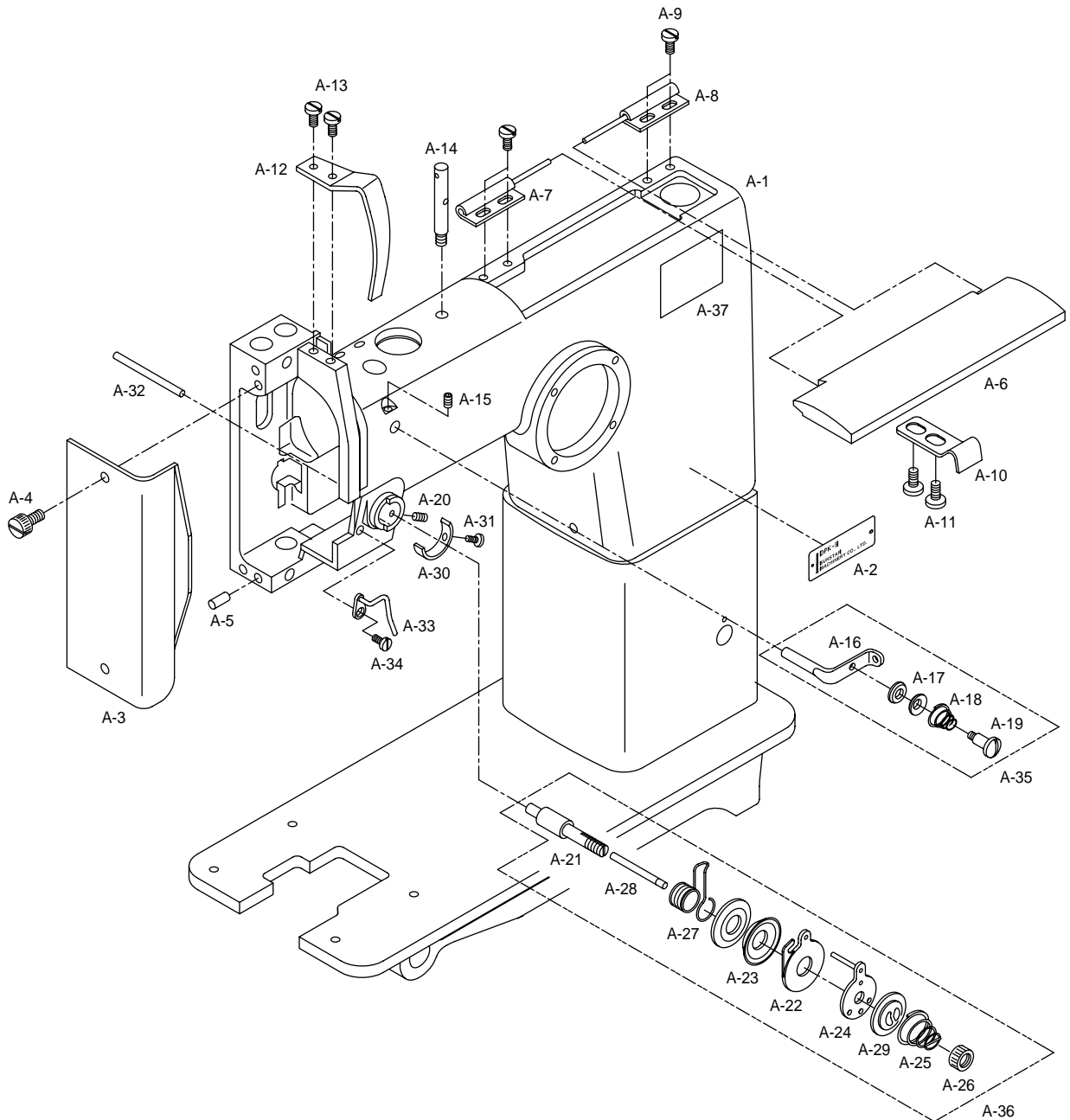
CONTENTS

목 차

A	<i>MACHINE ARM-BED, FRAME COVERS & NEEDLE THREAD PARTS</i> 외장 및 바늘·실 부품.....	6
B	<i>ARM SHAFT MECHANISM</i> 상축 관계.....	8
C	<i>TAKE-UP LEVER AND NEEDLE DRIVE MECHANISM</i> 실채기 및 바늘 요동 관계.....	10
D	<i>PRESSER FOOT AND LIFT MECHANISM</i> 노루발 및 올림관계.....	12
E	<i>FEED MECHANISM</i> 피이드 관계.....	14
F	<i>HOOK DRIVE MECHANISM</i> 훅 드라이브 관계.....	16
G	<i>REVERSE FEED LEVER MECHANISM</i> 역진 레버 관계.....	20
H	<i>SYNCHRONIZER</i> 싱크로 관계.....	22
I	<i>ACCESSORIES</i> 액세서리 관계.....	24
J	<i>ZIG ZAG CAM CHANGER - OPTION</i> 지그재그 캠 교환기(2점, 3점, 4점) - 옵션.....	26
	* INDEX.....	28

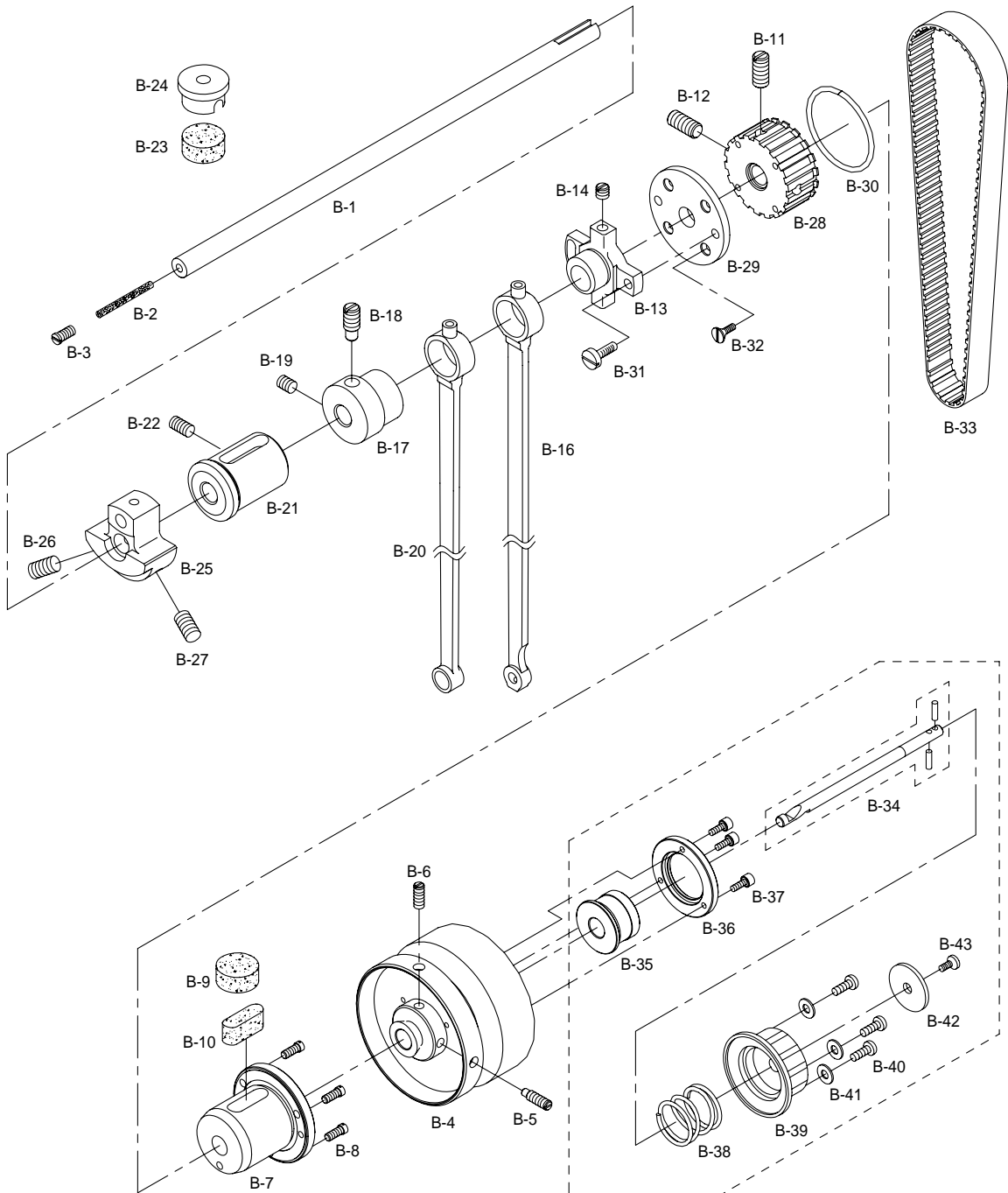
A

MACHINE ARM-BED, FRAME COVERS & NEEDLE THREAD PARTS 외장 및 바늘 · 실 부품



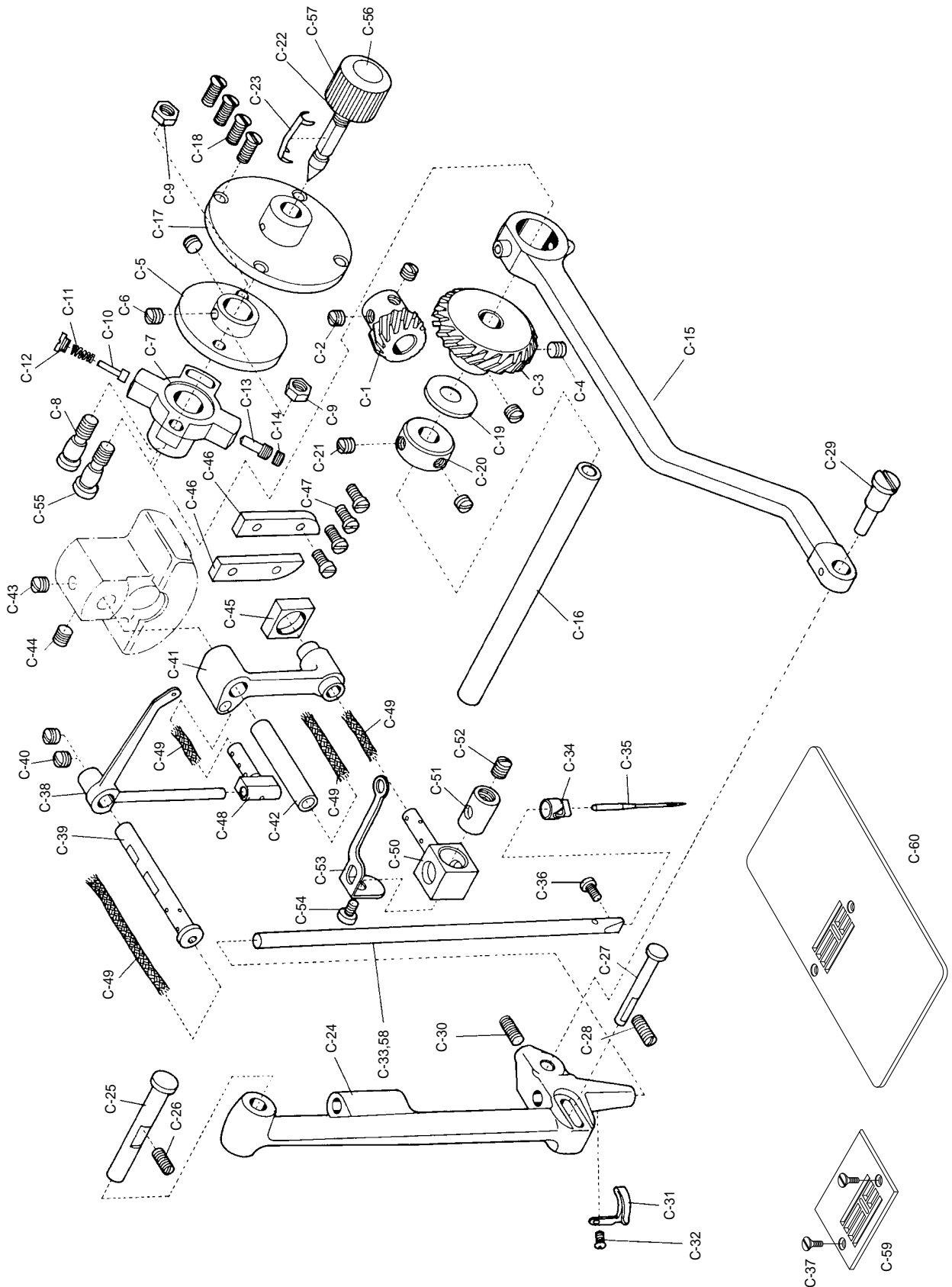
B

ARM SHAFT MECHANISM 상축관계



TAKE-UP LEVER AND NEEDLE DRIVE MECHANISM

실채기 및 바늘 요동 관계

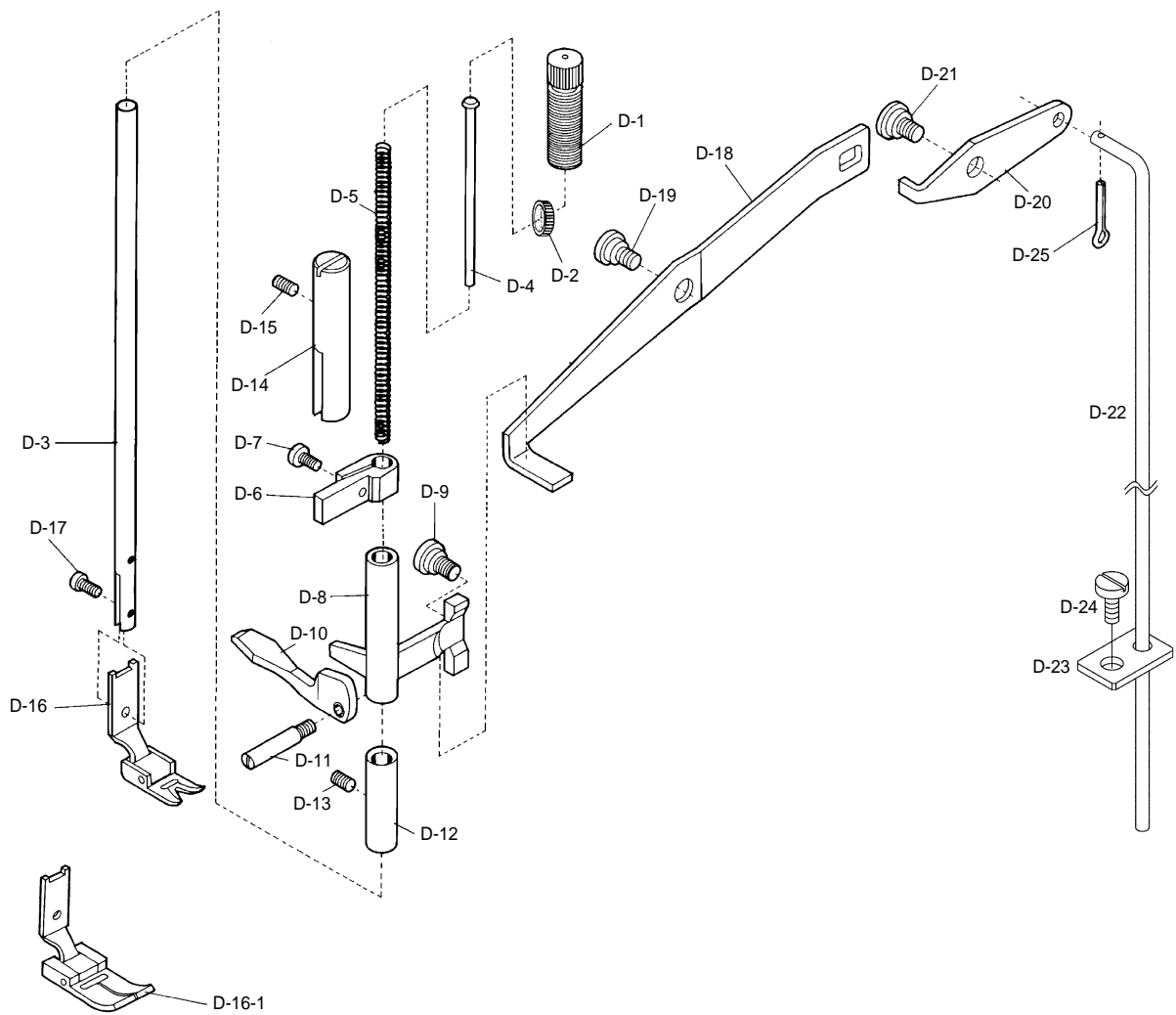




No.	Parts No.	Note	Name of Parts	품 명	Q' ty	Applied Period
C-1	16-001A-2302		Needle Vibrator Pinion	㉿ : 기어 (소)	1	
C-2	SC-0129-7400		Screw (1/4" n=40)	홈볼이 멈춤나사 (1/4" n=40)	2	
C-3	16-003A-2302		Needle Vibrator Gear	베벨 기어 (대)	1	
C-4	SC-A129-4515		Screw (1/4" n=40)	홈볼이 멈춤나사 (1/4" n=40)	2	
C-5	16-104A-2302		Needle Vibrator Eccentric Regulating Bracket Flange	지그재그 브라켓 후렌지	1	
C-6	SC-0114-1230		Screw (15/64" n=28)	홈볼이 멈춤나사 (15/64" n=28)	2	
C-7	02-020A-2302		Needle Vibrator Eccentric Regulating Bracket	피드 조절 브라켓 (K661)	1	
C-8	16-005S-2302		Needle Vibrator Eccentric Regulating Bracket Screw	지그재그 브라켓 단나사 (평)	1	
C-9	SN-0105-3400		Nut (15/64" n=28)	육각너트 (15/64" n=28)	2	
C-10	16-007P-2302		Needle Vibrator Eccentric Regulating Bracket Plunger	지그재그 조절 프란자핀	1	
C-11	02-026G-2302		Needle Vibrator Eccentric Regulating Bracket Plunger Spring	피드 조절 핀 스프링	1	
C-12	SC-0217-2302		Screw (9/32" n=28)	지그재그 조절 스트링 캡나사 (9/32" n=28)	1	
C-13	SC-0364-2302		Screw (1/4" n=24)	지그재그 조절핀 고정나사 (1/4" n=24)	1	
C-14	SC-0299-2302		Screw (1/4" n=24)	피드 조절 고정판 쥘나사 (1/4" n=24)	1	
C-15	16-111A-2302		Needle Bar Frame Pitman	지그재그 조절 룯드 (K662)	1	
C-16	16-113A-2302		Needle Vibrator Gear Shaft	기어축	1	
C-17	16-114A-2302		Needle Vibrator Eccentric Regulating Bracket Cover Plate	앞뚜껑	1	
C-18	SC-0171-2302		Screw (3/16" n=28)	지그재그 조절브라켓 커버나사 (3/16" n=28)	4	
C-19	02-038W-2302		Needle Vibrator Gear Shaft Washer	상축 앞 붓싱와셔	1	
C-20	16-016A-2302		Needle Vibrator Gear Shaft Collar	지그재그 조절 축 카라	1	
C-21	SC-A129-4515		Screw (1/4" n=40)	홈볼이 멈춤나사 (1/4" n=40)	2	
C-22	16-117A-2302		Needle Vibrator Regulating Spindle	지그재그 조절축	1	
C-23	16-020G-2302		Needle Vibrator Regulating Spindle Spring	지그재그 조절축 스프링	1	
C-24	GP-012151-00		Needle Bar Frame	바늘대 후레임	1	
C-25	04-002P-2302		Needle Bar Frame Hinge Stud	바늘대 후레임 힌지핀	1	
C-26	SC-0514-7400		Screw (15/64" n=28)	상축 앞 붓싱 고정나사 (15/64" n=28)	1	
C-27	04-003P-2302		Needle Bar Frame Guide Stud	바늘대 후레임 가이드 핀	1	
C-28	SC-0514-7400		Screw (15/64" n=28)	상축 앞 붓싱 고정나사 (15/64" n=28)	1	
C-29	04-104A-2302		Needle Bar Frame Pitman Eccentric Stud	편심축	1	
C-30	SC-0504-1230		Screw (1/4" n=40)	실채기핀 고정나사 (1/4" n=40)	1	
C-31	04-006C-2302		Needle Bar Thread Guide	바늘대 후레임 실걸이	1	
C-32	SC-0549-2302		Screw (1/8" n=44)	바늘대 후레임 실걸이 나사 (1/8" n=44)	1	
C-33	GP-056099-00		Needle Bar	바늘대	1	Aug. 06. 12
C-34	04-009C-2302		Needle Bar Thread Eyelet	바늘대 실걸이	1	
C-35			Needle	바늘	1	
C-36	SC-A131-4522		Screw (1/8" n=44)	홈볼이 납작 작은나사 (1/8" n=44)	1	
C-37	SC-0531-2302		Screw (9/64" n=40)	윗뚜껑 고정판 고정나사 (소) (9/64" n=40)	2	
C-38	04-114A-2302		Take-Up Lever	실채기	1	
C-39	GP-032446-00		Take-Up Lever Hinge Stud	실채기 핀	1	
C-40	SC-0114-1230		Screw (15/64" n=28)	피드캠 고정나사 (15/64" n=28)	2	
C-41	04-116A-2302		Needle Bar Connecting Link	바늘대 크랭크	1	
C-42	04-117P-2302		Needle Bar Connecting Link Hinge Stud	캠핀	1	
C-43	SC-0129-7400		Screw (1/4" n=40)	기어나사 (1/4" n=40)	1	
C-44	SC-0504-1230		Screw (1/4" n=40)	실채기 핀 고정나사 (1/4" n=40)	1	
C-45	04-120A-2302		Needle Bar Connecting Link Block	바늘대 안내블럭	1	
C-46	04-121A-2302		Needle Bar Connecting Link Block Guide	바늘대 안내블럭 가이드	2	
C-47	SC-0192-2302		Screw (3/16" n=28)	실조절장치 쥘나사 (3/16" n=28)	4	
C-48	02-103A-7400		Take-Up Lever Drive Stud	실채기 잡이	1	
C-49	44-0000-1230		Oil Wick	오일 심지	1	
C-50	04-123A-2302		Needle Bar Connecting Stud	바늘대 잡이	1	
C-51	04-124A-2302		Needle Bar Connecting Stud Swivel	바늘대 잡이 블럭	1	
C-52	SC-0110-1230		Screw (15/64" n=28)	홈볼이 멈춤나사 (15/64" n=28)	1	
C-53	GP-043414-00		Needle Thread Guide Plate	침사 보호판	1	Feb. 06. 09
	04-125C-2302		Take-Up Auxiliary	실 보호판 조절	1	
C-54	SC-0133-1230		Screw (1/8" n=44)	심지 지지대 나사(1/8" n=44)	1	
C-55	16-006S-2302		Needle Vibrator Eccentric Regulating Bracket Screw	지그재그 브라켓 단나사 (볼록)	1	
C-56	16-019M-2302		Needle Vibrator Regulating Dial Cover	지그재그 조절 다이알 커버	1	
C-57	16-018A-2302		Needle Vibrator Regulating Dial	지그재그 조절 다이알	1	
C-58	GP-011203-00		Needle Bar	바늘대	1	Option
C-59	GP-029160-00		Needle Plate	바늘판	1	
C-60	GP-032771-00		Needle Plate (Option)	바늘판 (옵션)	1	Option

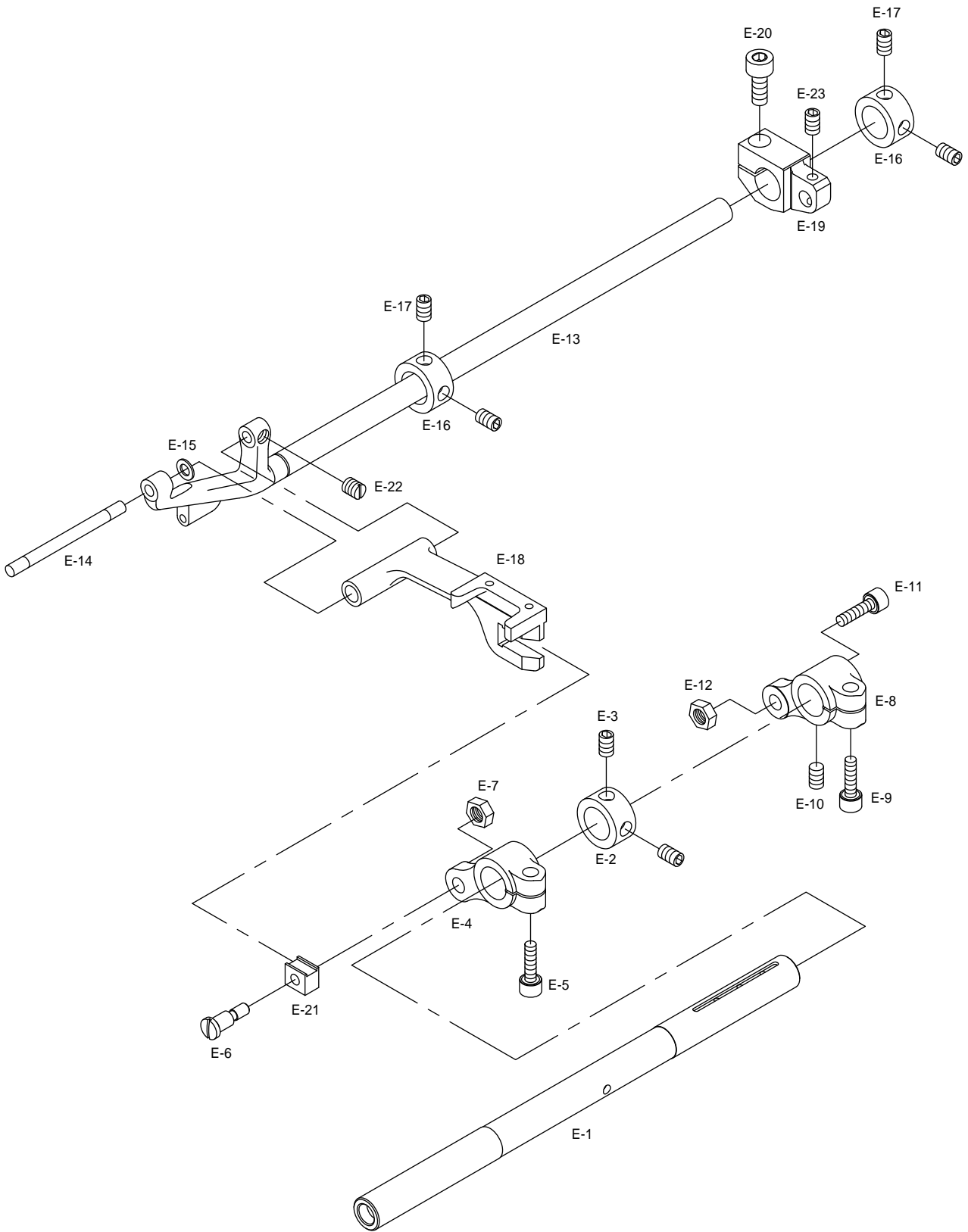
D

PRESSER FOOT AND LIFT MECHANISM 노루발 및 올림 관계

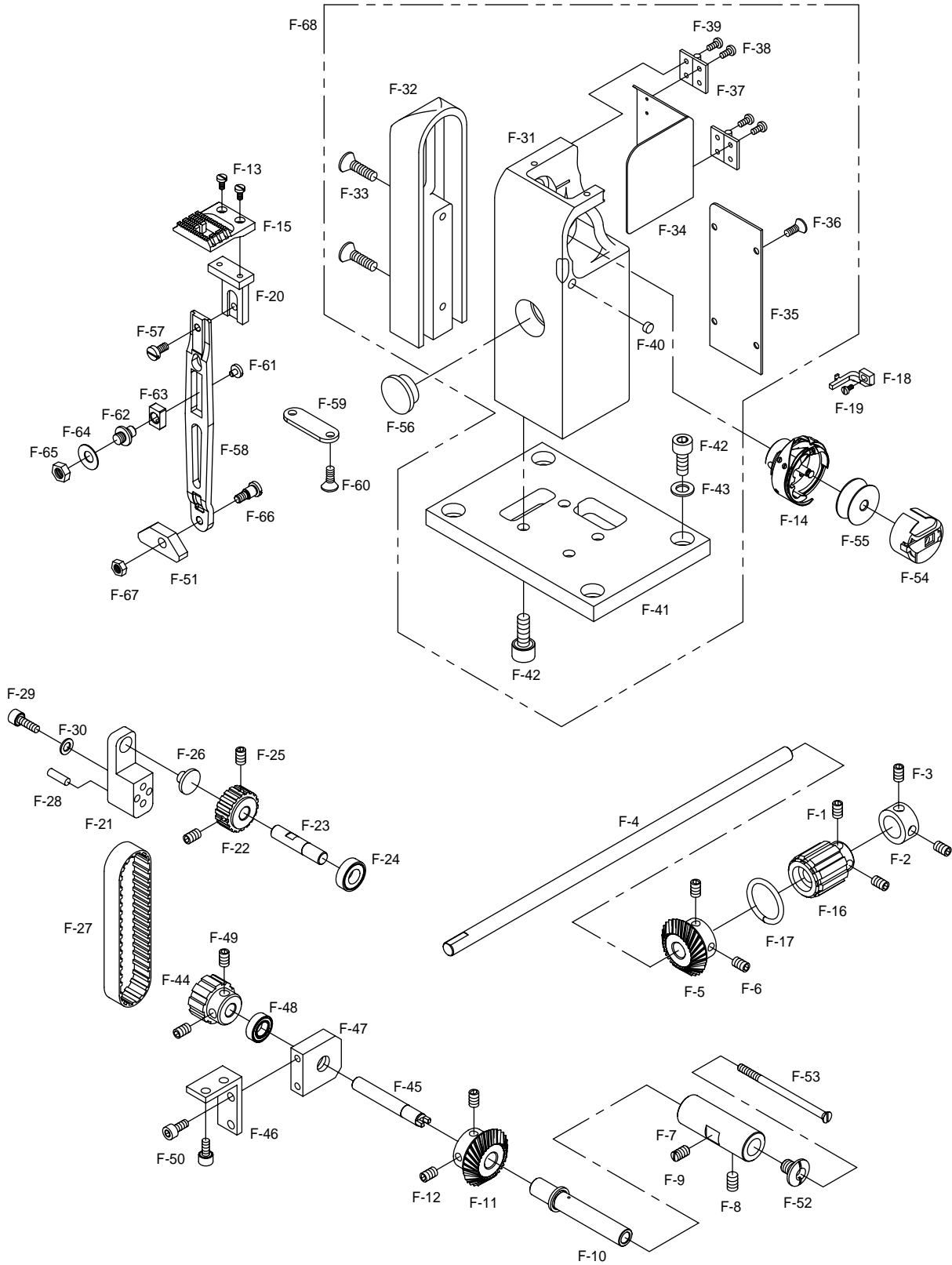


E

FEED MECHANISM 피이드 관계

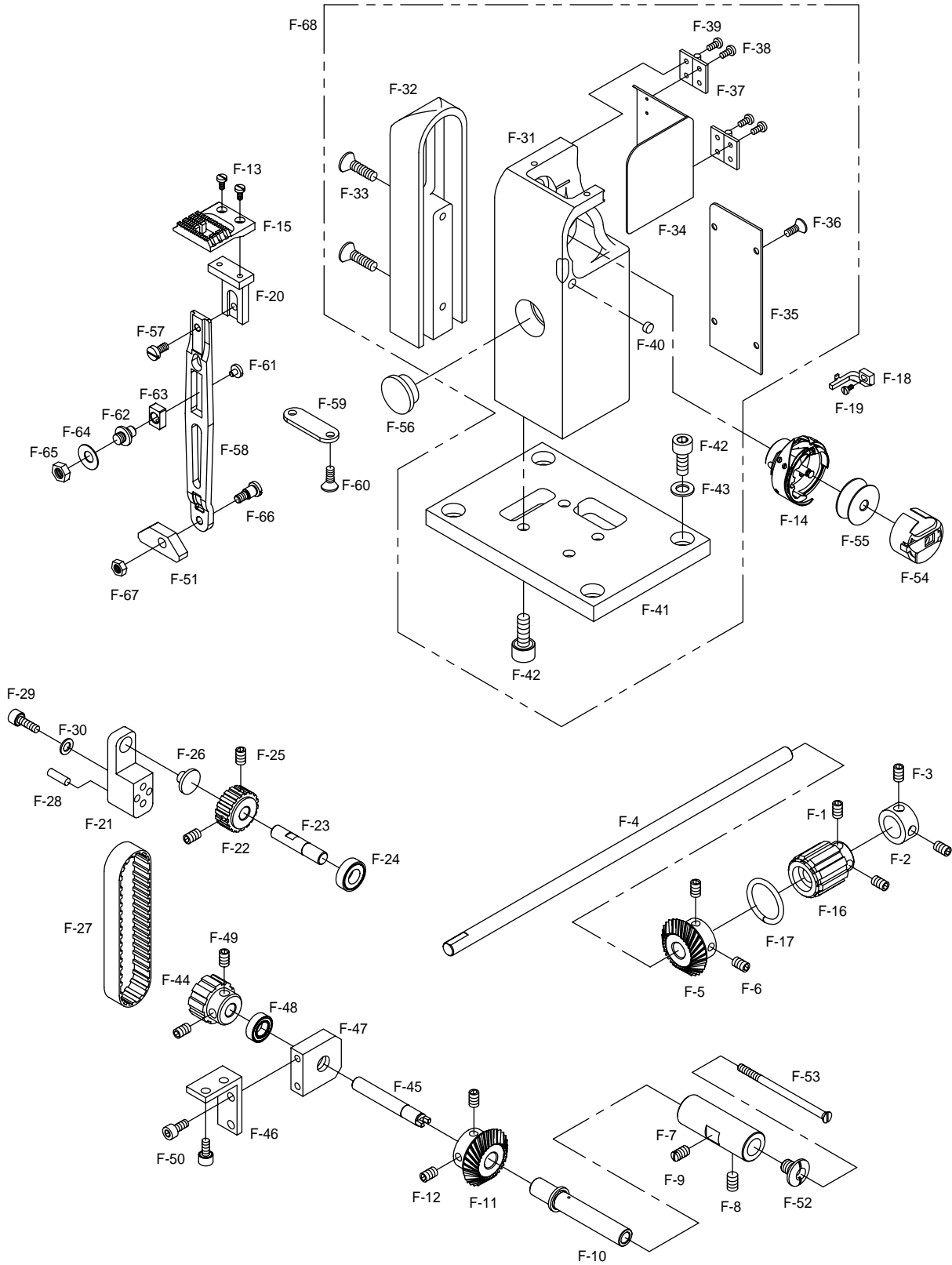


HOOK DRIVE MECHANISM 훅 드라이브 관계

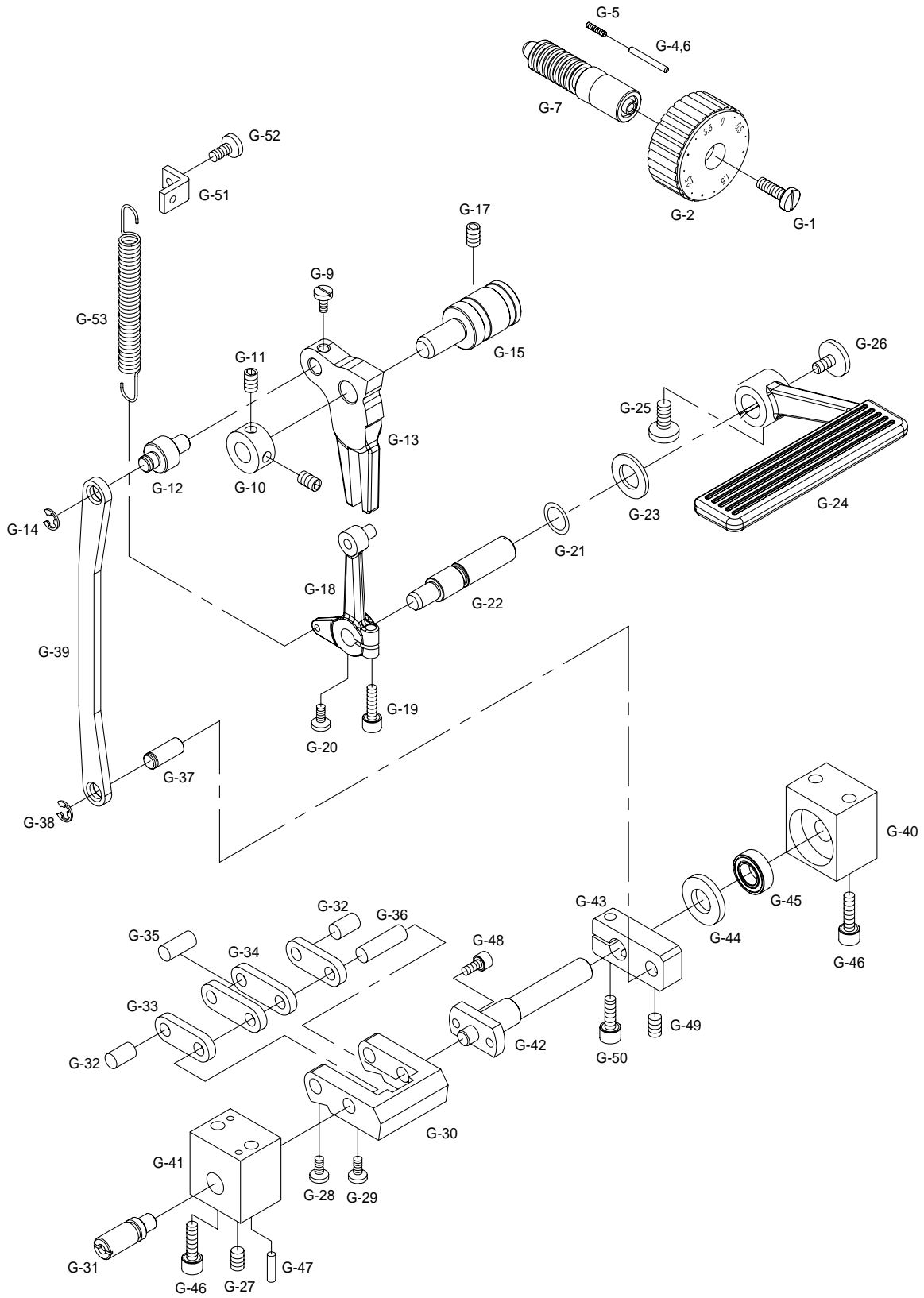




Ref. No.	Parts No.	Note	Name of Parts	품 명	Q'ty	Applied Period
F-1	SC-0129-7400		Screw (1/4"n=40)	기어나사 (1/4"n=40)	2	
F-2	07-103A-2302		Hook Drive Bevel Pinion Shaft Belt Pulley Collar	타이밍 폴리 카라	1	
F-3	SC-A129-4515		Screw (1/4"n=40)	홈볼이 멈춤나사(1/4"n=40)	2	
F-4	07-104A-2302		Hook Drive Bevel Pinion Shaft	하축	1	
F-5	07-005A-2302		Hook Drive Bevel Pinion	하축기어	1	
F-6	SC-A129-4515		Screw (1/4"n=40)	하축기어 첩나사	2	
F-7	07-107A-2302		Hook Shaft Bushing	가마축 B/S	1	
F-8	SC-0507-1230		Screw (15/64"n=28)	상축부싱 고정나사 (15/64"n=28)	1	
F-9	SC-0114-1230		Screw (15/64"n=28)	피드캠 고정나사 (15/64"n=28)	1	
F-10	GP-017337-00		Hook Shaft	가마축	1	
F-11	07-010A-2302		Hook Shaft Bevel Pinion	가마축 기어	1	
F-12	SC-A129-4515		Screw (1/4"n=40)	홈볼이 멈춤나사(1/4"n=40)	2	
F-13	SC-0142-2302		Screw (1/8"n=44)	톱니 첩나사 (1/8"n=44)	2	
F-14	GP-000121-00		Hook	훅	1	Feb. 19. 09
	GP-029214-00		Hook Complete	가마	1	
F-15	GP-029215-00		Feed Dog	톱니	1	
F-16	GP-029216-00		Timing Belt Pulley (Lower 1)	타이밍 벨트 폴리 (하1)	1	
F-17	GP-029217-00		Lower Shaft Pulley Flange	하축 폴리 플랜지	1	
F-18	GP-029218-00		Bobbin Case Stop	가마잡이	1	
F-19	SC-000920-00		Screw (M3x6)	가마잡이 고정나사 (M3x6)	1	
F-20	GP-029219-00		Feed Dog Connection Bar	톱니 연결대	1	
F-21	GP-029220-00		Timing Belt Rock Plate	타이밍 벨트 고정대	1	
F-22	GP-029221-00		Timing Belt Pulley (Upper 2)	타이밍 벨트 폴리 (상2)	1	
F-23	GP-029222-00		Timing Belt Pulley Upper Shaft	타이밍 벨트 폴리 상축	1	
F-24	BR-000189-00		Bearing (608ZZ)	볼베어링 (608ZZ)	1	
F-25	SC-000927-00		Screw (M5x5)	무두나사 (M5x5)	2	
F-26	GP-029223-00		DU Bush (MB0806-15FDU)	DU 부시 (MB0806-15FDU)	1	
F-27	BE-000133-00		Timing Belt (170 x L * W 9.5mm)	타이밍 벨트 (170XL * 폭 9.5mm)	1	
F-28	PN-000450-00		Spring Pin (Ø3 * 15)	스프링 핀 (Ø3 * L=15)	2	
F-29	SC-000928-00		Screw (M4x25)	고정대 고정나사 (M4x25)	2	
F-30	WS-000309-00		Washer	평washer	2	
F-31	GP-029224-04		Hook Box	가마박스	1	Sep.30.10
F-32	GP-029225-01		Timing Belt Cover	타이밍 벨트 커버	1	Aug.23.10
F-33	SC-000929-00		Screw (M4x30)	타이밍벨트커버 접시머리 고정나사(M4x30)	2	
F-34	GP-029226-00		Hook Cover	가마 커버	1	
F-35	GP-029227-00		Hook Box Cover	가마박스 커버	1	
F-36	SC-000930-00		Screw (M3x5)	가마박스 커버 접시머리 고정나사(M3x5)	4	
F-37	HG-000006-00		Hinge	가마박스커버 경첩	2	
F-38	SC-000931-00		Screw (M2x4)	경첩 고정나사(1) (M2x4)	4	
F-39	SC-000932-00		Screw (M2x2)	경첩 고정나사(2) (M2x2)	4	
F-40	GP-029228-00		ND Magnet (Ø6 * L=5)	ND 자석 (Ø6 * L=5)	1	
F-41	GP-029229-01		Hook Box Rock Plate	가마박스 고정판	1	Nov.20.10
F-42	SC-000933-00		Screw (M6x15)	가마박스 고정나사 (M6x15)	8	
F-43	WS-000310-00		Washer (M6)	washer (M6)	4	
F-44	GP-029230-00		Timing Belt Pulley (Lower 2)	타이밍 벨트 폴리(하2)	1	
F-45	GP-029231-00		Timing Belt Pulley Lower Shaft	타이밍 벨트 폴리 하축	1	
F-46	GP-029232-01		Timing Belt Pulley Lower Shaft Rock Plate	타이밍 벨트 폴리 하축 고정판	1	Feb.19.09
F-47	GP-029233-01		Timing Belt Pulley Lower Shaft Holder	타이밍 벨트 폴리 하축 홀더	1	Nov.20.10
F-48	BR-000190-00		Ball Bearing (608ZZ)	볼베어링 (608ZZ)	1	
F-49	SC-000934-00		Screw (M6x6)	타이밍 벨트 폴리 고정나사 (M6x6)	2	
F-50	SC-000935-00		Screw (M5x10)	하축 고정판 고정나사 (M5x10)	4	
F-51	GP-029234-00		Feed Dog Rock Link	톱니 고정 링크	1	
F-52	SC-0187-2302		Screw (5/16"n=28)	가마축 마개나사 (5/16"n=28)	1	
F-53	SC-0127-2302		Screw (11/64"n=40)	가마고정나사 (11/64"n=40)	1	
F-54	GP-000123-00		Bobbin Case	보빈 케이스	1	Feb.19.09
	07-106A-146L		Bobbin Case Complete	보빈 케이스 (KM-640BL)	1	
F-55	GP-000126-00		Bobbin	보빈	1	Feb.19.09

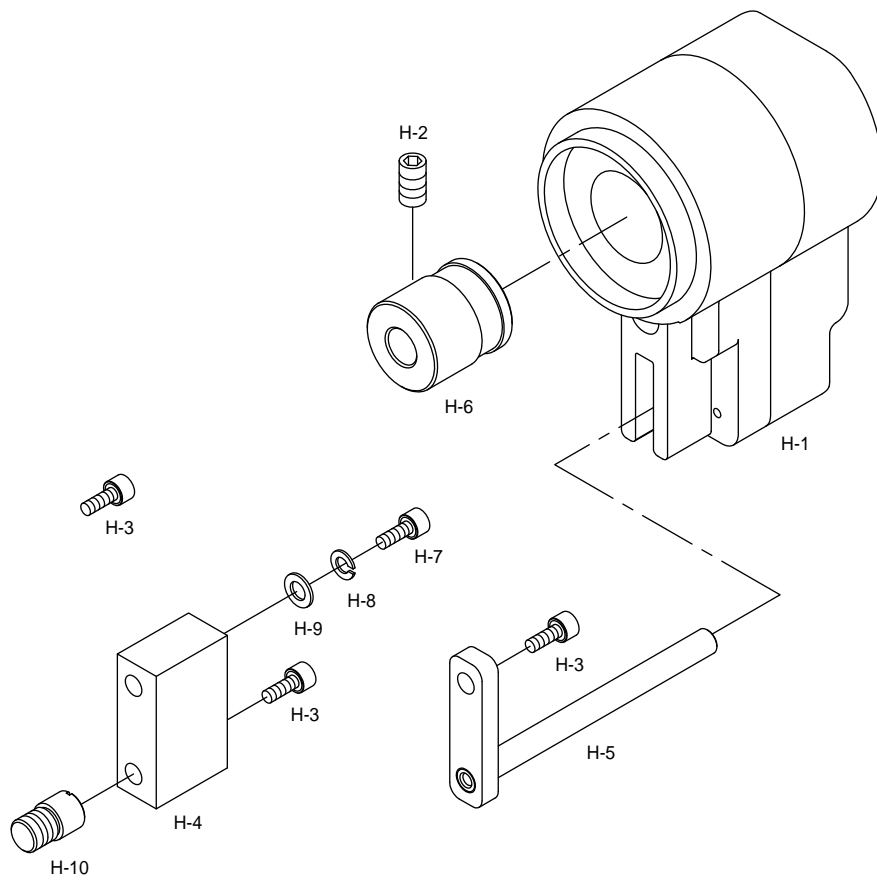


REVERSE FEED LEVER MECHANISM 역진 레버 관계



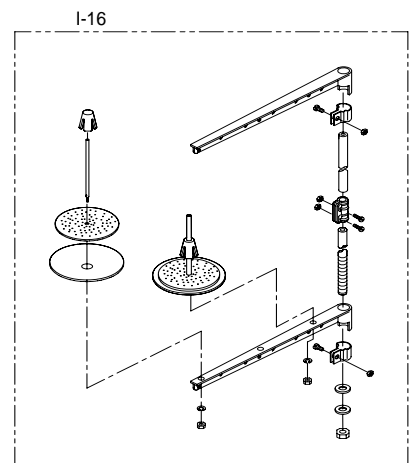
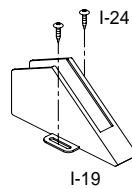
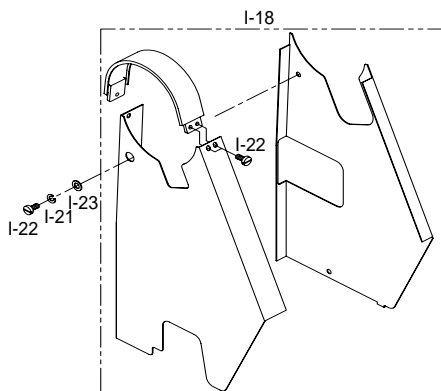
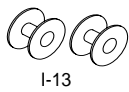
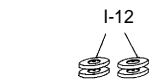
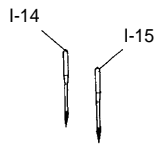
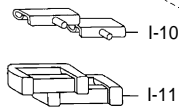
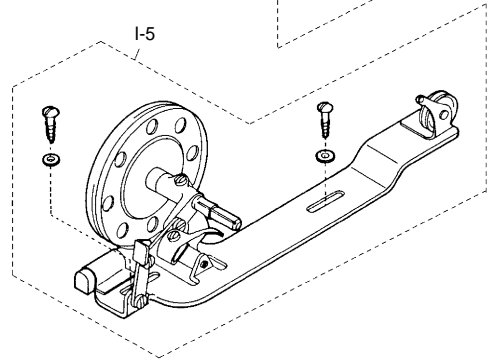
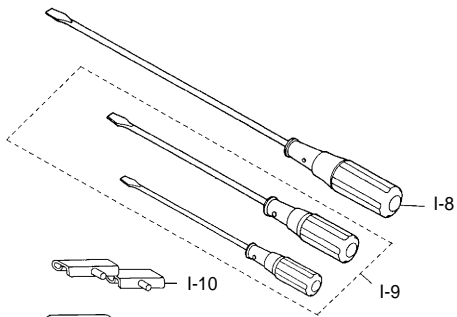
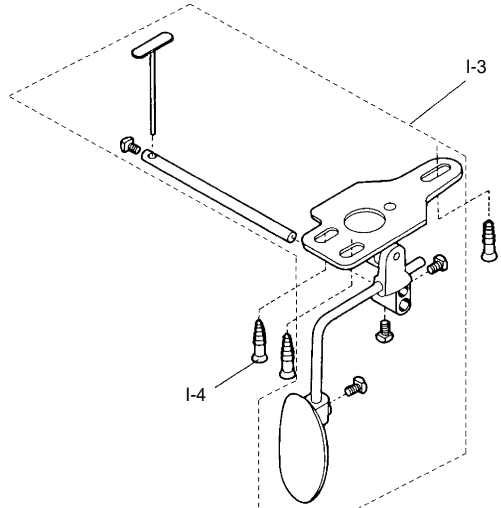
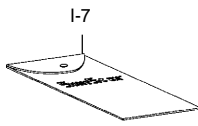
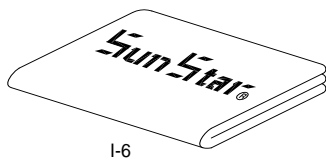
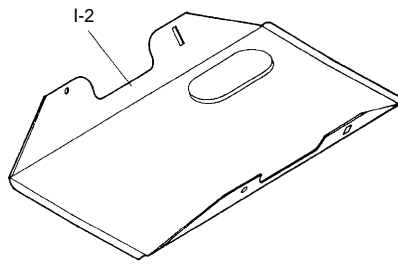
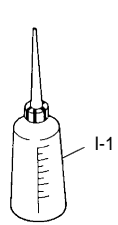


No.	Parts No.	Note	Name of Parts	품 명	Q' ty	Applied Period
G-1	SC-0193-1230		Screw(3/16" n=28)	다이알핀 고정나사(3/16" n=28)	1	
G-2	GP-031205-00		Feed Regulator Control Plate(INSET)	다이알 문자판(3.5mm)(INSET)	1	
G-4	PN-000273-00		Pin	다이알 핀	1	
G-5	06-027G-1230		Spring	다이알 스프링	1	
G-6	PN-000267-00		Dial Pin	다이알 핀	1	
G-7	GP-016930-00		Feed Regulator Dial Shaft	피이드 조절 다이알 축	1	
G-9	SC-0174-1230		Screw(11/64" n=40)	가마잡이 나사(11/64" n=40)	2	
G-10	06-220A-2350		Collar	피이드 조절기 축 카라	1	
G-11	SC-0129-7400		Screw(1/4" n=40)	기어 나사(1/4" n=40)	2	
G-12	06-221A-2350		Feed Adjusting Shaft	피이드 조절축	1	
G-13	06-119A-1370		Feed Ragulator	피이드 조절기	1	
G-14	04-009C-3710		E-Ring(φ 5)	E링(φ 5)	1	
G-15	GP-026262-00		Feed Ragulator Shaft	피이드 조절기 축	1	
G-17	SC-0507-1230		Screw(15/64" n=28)	상축 붓싱 고정나사(15/64" n=28)	1	
G-18	06-126A-250A		Reverse Feed Lever Crank Ass'y	역진 레버 인장 크랭크(조)	1	
G-19	SC-0184-1600		Screw(3/16" n=28)	수평밀대 크랭크 쥘나사(3/16" n=28)	1	
G-20	SC-0174-1230		Screw(11/64" n=40)	가마잡이 나사(11/64" n=40)	1	
G-21	06-042R-1230		O-Ring	레버축 오링	1	
G-22	06-125A-2500		Reverse Feed Control Lever Shaft	역진 레버축	1	
G-23	06-053W-1230		Washer	레버 와셔	1	
G-24	06-036C-2500		Feed Ragulator Lever	역진 레버	1	
G-25	SC-0186-1230		Screw(3/16" n=32)	역진레버 고정나사(3/16" n=32)	1	
G-26	SC-0185-1230		Screw(3/16" n=32)	레버 덮개 나사(3/16" n=32)	1	
G-27	SC-0504-1230		Screw(1/4" n=40)	실체기 핀 고정나사(1/4" n=40)	1	
G-28	SC-0175-1230		Screw(11/64" n=40)	와이롯드 보강판 나사(11/64" n=40)	1	
G-29	SC-0175-1230		Screw(11/64" n=40)	와이롯드 보강판 나사(11/64" n=40)	1	
G-30	06-103A-2350		Feed Regulator Link	피이드 조절 링크	1	
G-31	06-107P-2350		Feed Adjusting Link Hinge Pin(A)	피이드 조절링크 힌지핀(A)	1	
G-32	06-110P-2350		Feed Connection Link Pin(C)	피이드 연결 링크핀(C)	2	
G-33	06-105A-2350		Feed Connection Link(A)	피이드 연결링크(A)	2	
G-34	06-106A-2350		Feed Connection Link(B)	피이드 연결링크(B)	2	
G-35	06-109P-2350		Feed Connection Link Pin(B)	피이드 연결 링크핀(B)	1	
G-36	06-104P-2350		Feed Connection Link Pin(A)	피이드 연결 링크핀(A)	1	
G-37	06-023P-2350		Hinge Pin	피이드 조절 연결 롯데 힌지핀	1	
G-38	04-009C-3710		E-Ring(φ 5)	E링(φ 5)	1	
G-39	GP-029199-00		Feed Regulator Rod	피이드 조절 롯데	1	
G-40	GP-028953-00		Feed Adjusting Link Shaft Plate(1)	피이드 조절 링크축 받침(1)	1	
G-41	GP-028954-00		Feed Adjusting Link Shaft Plate(2)	피이드 조절 링크축 받침(2)	1	
G-42	GP-028955-00		Feed Adjusting Link Shaft	피이드 조절 링크축	1	
G-43	GP-029209-00		Feed Adjusting Crank	피이드 조절 크랭크	1	
G-44	GP-029210-00		Spacer	스페이스	1	
G-45	BR-000188-00		Ball bearing (6000ZZ)	볼 베어링(1) (6000ZZ)	1	
G-46	SC-000915-00		Screw (M5×35)	링크축 받침 고정나사 (M5×35)	4	
G-47	PN-000449-00		MS Pin (φ 3, L=15)	MS 핀 (φ 3, L=15)	2	
G-48	SC-000916-00		Screw (M4×12)	피이드 조절 링크축 고정나사 (M4×12)	2	
G-49	SC-000917-00		Screw (M5×5)	힌지핀 무두 나사 (M5×5)	2	
G-50	SC-000918-00		Screw (M5×18)	피이드 조절 크랭크 쥘 나사 (M5×18)	1	
G-51	GP-029212-00		Spring Holder Plate	피이드조절롯데 스프링 홀더판	1	
G-52	SC-000919-00		Screw (M4×8)	홀더판 접시머리 고정나사 (M4×8)	1	
G-53	06-003G-8677		Reverse Lever Spring	역진레버 스프링 (KM-857)	1	

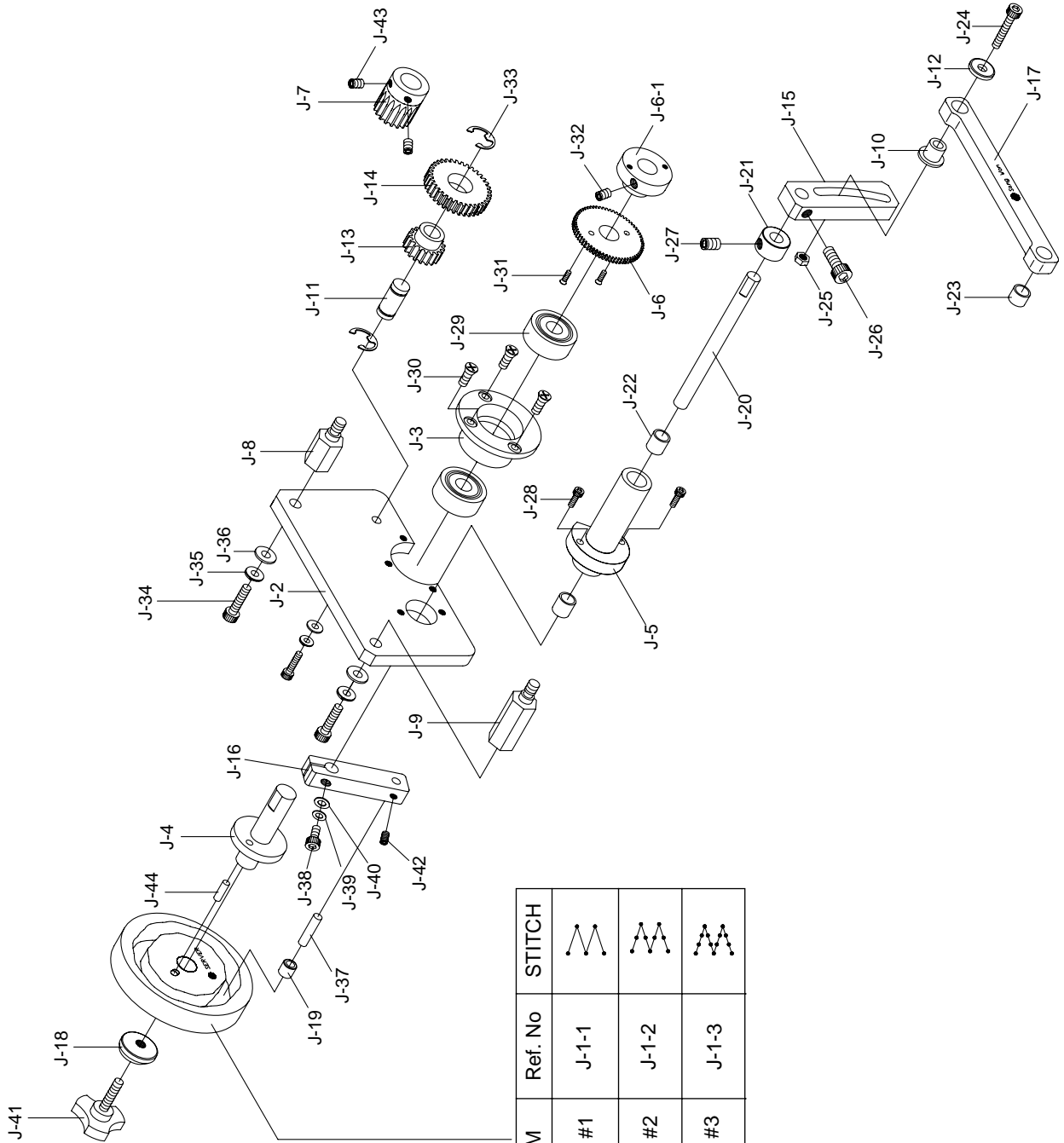




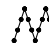
ACCESSORIES

액세서리 관계



ZIG ZAG CAM CHANGER – OPTION 지그재그 캠 교환기(2점, 3점, 4점) – 옵션



CAM	Ref. No	STITCH
CAM #1	J-1-1	
CAM #2	J-1-2	
CAM #3	J-1-3	



No.	Parts No.	Note	Name of Parts	품 명	Q' ty	Applied Period
J-1-1	GP-026260-00		CAM #1(2 Point)	캠 1(2점)	1	
J-1-2	GP-026261-00		CAM #2(3 Point)	캠 2(3점)	1	
J-1-3	GP-026263-00		CAM #3(4 Point)	캠 3(4점)	1	
J-2	GP-026268-00		GEAR PLATE	기어플레이트	1	
J-3	GP-026269-00		GEAR PLATE HOUSING	기어플레이트 하우징	1	
J-4	GP-026270-00		CAM FIX SHAFT	캠고정축	1	
J-5	GP-026279-00		STITCH MOTION PLATE FIX HOUSING	스티치모션플레이트 고정하우징	1	
J-6	GP-026275-00		CAM ROTATE GEAR	캠회전기어	1	
J-6-1	GP-026277-00		CAM ROTATE GEAR CONNECT SHAFT	캠회전기어 연결축	1	
J-7	GP-026278-00		DRIVING GEAR	구동기어	1	
J-8	GP-026280-00		GEAR PLATE FIX HEXAGON(LEFT)	기어플레이트고정육각보(좌)	1	
J-9	GP-026281-00		GEAR PLATE FIX HEXAGON(RIGHT)	기어플레이트고정육각보(우)	1	
J-10	GP-026282-00		STITCH MOTION PLATE FIX BUSH	스티치모션플레이트 고정부시	1	
J-11	GP-026283-00		MIDDLE GEAR FIX SHAFT	중간기어 고정축	1	
J-12	WS-000282-00		STITCH MOTION PLATE WASHER	스티치모션플레이트 와셔	1	
J-13	GP-026284-00		MIDDLE GEAR1	중간기어1	1	
J-14	GP-026285-00		MIDDLE GEAR2	중간기어2	1	
J-15	GP-026286-00		STITCH MOTION PLATE	스티치모션플레이트	1	
J-16	GP-026287-00		CAM RING CONNECT ROD	캠링 연결대	1	
J-17	GP-026288-00		CONNECTING ROD	연결 이음대	1	
J-18	WS-000283-00		CAM ROCK WASHER	캠잠금와셔	1	
J-19	RJ-000085-00		CAM RING	캠 링	1	
J-20	GP-026289-00		STITCH MOTION PLATE FIX SHAFT	스티치모션플레이트 고정축	1	
J-21	RJ-000086-00		FIXING RING	고정링	1	
J-22	GP-026290-00		DU BUSH 1	DU 부시 1	2	
J-23	GP-026388-00		DU BUSH 2	DU 부시 2	1	
J-24	SC-000818-00		STITCH MOTION PLATE SCREW	스티치모션플레이트 나사	1	
J-25	SN-000132-00		STITCH MOTION PLATE NUT	스티치모션플레이트 너트	1	
J-26	SC-000819-00		STITCH MOTION PLATE ROCK SCREW	스티치모션플레이트 고정축 잠금나사	1	
J-27	SC-000820-00		FIXING RING SET SCREW	고정링 세트나사	1	
J-28	SC-000821-00		STITCH MOTION PLATE FIX HOUSING SCREW	스티치모션플레이트 고정하우징 나사	2	
J-29	BR-000165-00		BALL BEARING	볼베어링	2	
J-30	SC-000822-00		GEAR PLATE HOUSING SCREW	기어플레이트 하우징 나사	3	
J-31	SC-000823-00		CAM ROTATE GEAR SCREW	캠회전기어 나사	2	
J-32	SC-000824-00		CAM ROTATE GEAR CONNECT SHAFT SET SCREW	캠회전기어 연결축 세트나사	1	
J-33	RJ-000087-00		SNAP RING	멈춤링	2	
J-34	SC-000825-00		GEAR PLATE FIX HEXAGON FIX SCREW	기어플레이트고정육각보 고정나사	2	
J-35	WS-000284-00		GEAR PLATE HEXAGON SPRING WASHER	기어플레이트고정육각보 스프링와셔	2	
J-36	WS-000285-00		GEAR PLATE HEXAGON FLAT WASHER	기어플레이트고정육각보 평와셔	2	
J-37	PN-000416-00		CAM CONNECT PIN	캠링 연결핀	1	
J-38	SC-000826-00		STITCH MOTION PLATE CONNECT ROD SCREW	스티치모션플레이트 연결대 나사	1	
J-39	WS-000286-00		STITCH MOTION PLATE SPRING WASHER	스티치모션플레이트 스프링 와셔	1	
J-40	WS-000287-00		STITCH MOTION PLATE FLAT WASHER	스티치모션플레이트 평와셔	1	
J-41	GP-026384-00		CAM HANDLE	캠 손잡이	1	
J-42	SC-000827-00		STITCH MOTION PLATE CONNECT ROD SET SCREW	스티치모션플레이트 연결대 세트나사	1	
J-43	SC-000828-00		DRIVING GEAR SET SCREW	구동기어 세트나사	2	
J-44	PN-000417-00		CAM FIX PIN	캠고정핀	1	

Index

Parts No.	Name of Parts	Page	Ref.No.	Parts No.	Name of Parts	Page	Ref.No.	Parts No.	Name of Parts	Page	Ref.No.
01-010P-2302	Face Plate Position Pin	7	A-5	05-004C-2302	Presser Bar Spring Stop Rod	13	D-4	16-005S-2302	Needle Vibrator Eccentric Regulating Bracket Screw	11	C-8
01-011A-2302	Arm Cap Cover	7	A-6	05-005G-2302	Presser Bar Spring	13	D-5	16-006S-2302	Needle Vibrator Eccentric Regulating Bracket Screw	11	C-55
01-012C-2302	Arm Cap Cover Hinge (Left)	7	A-7	05-009S-2302	Presser Bar Lift Lever Bracket Guide Screw	13	D-9	16-007P-2302	Needle Vibrator Eccentric Regulating Bracket Plunger	11	C-10
01-013C-2302	Arm Cap Cover Hinge (Right)	7	A-8	05-010A-2302	Presser Bar Lifter	13	D-10	16-016A-2302	Needle Vibrator Gear Shaft Collar	11	C-20
01-019C-2302	Thread Guide Post	7	A-14	05-011S-2302	Presser Bar Lifter Hinge Screw	13	D-11	16-018A-2302	Needle Vibrator Regulating Dial	11	C-57
01-020A-2302	Sub Thread Tension Control Ass'y	7	A-35	05-013A-2302	Presser Bar Position Guide	13	D-14	16-019M-2302	Needle Vibrator Regulating Dial Cover	11	C-56
01-021A-2302	Thread Tension Control Ass'y	7	A-36	05-016S-2302	Knee Lifter Lifting Lever	13	D-18	16-020G-2302	Needle Vibrator Regulating Spindle Spring	11	C-23
01-021R-1600	Bed Rubber Cap	19	F-56	05-017S-2302	Knee Lifter Lifting Lever Screw	13	D-19	16-104A-2302	Needle Vibrator Eccentric Regulating Bracket Flange	11	C-5
01-022C-2302	Thread Controller Spring Stop	7	A-30	05-017S-2302	Knee Lifter Connection Lever Screw	13	D-21	16-111A-2302	Needle Bar Frame Pitman	11	C-15
01-023P-2302	Thread Tension Release Plunger	7	A-32	05-018C-2302	Knee Lifter Connection Lever	13	D-20	16-113A-2302	Needle Vibrator Gear Shaft	11	C-16
01-024A-2302	Thread Eyelet	7	A-33	05-020P-2302	Knee Lifter Connection Lever Lifting Rod Cutter Pin	13	D-25	16-114A-2302	Needle Vibrator Eccentric Regulating Bracket Cover Plate	11	C-17
01-042R-1230	Hinge Sheet	25	I-11	05-103A-2302	Presser Bar	13	D-3	16-117A-2302	Needle Vibrator Regulating Spindle	11	C-22
01-043C-1230	Bed Hinge	25	I-10	05-103A-7400	Presser Bar Position Guide Lever	13	D-6	40-111G-2302	Thread Controller Spring	7	A-27
01-101A-2302	Thread Tension Post	7	A-21	05-108A-2302	Presser Bar Lift Lever Bracket	13	D-8	40-333G-2302	Thread Tension Spring	7	A-25
01-102A-2302	Thread Tension Release Pin	7	A-28	05-112A-2302	Presser Bar Bushing	13	D-12	41-101A-1230	Universal Winder Complete	25	I-5
01-104A-2302	Thread Tension Disc	7	A-23	05-411A-2302	Presser Foot (DPK-4)	13	D-16-1	44-0000-1230	Oil Wick	9	B-2
01-105A-2302	Thread Tension Spring Cup	7	A-22	06-002A-2302	Feed Lift Rock Shaft Collar	15	E-2	44-0000-1230	Oil Wick	11	C-49
01-106A-2302	Thread Tension Release Washer	7	A-24	06-002W-2350	Washer	15	E-15	60-002P-2302	Pin	23	H-10
01-109A-2302	Thread Tension Thumb Nut	7	A-26	06-003G-8677	Reverse Lever Spring	21	G-53	60-004A-2350	Belt Cover "D"	25	I-20
01-110A-2302	Thread Tension Disc Washer	7	A-29	06-005S-2302	Feed Bar Slide Block Hinge Screw	15	E-6	91-001C-1230	Accessory Box	25	I-7
01-115C-2302	Arm Cap Cover Lock Spring	7	A-10	06-008S-8270	Stud Screw For Feed Bar	19	F-66	91-002S-3400	Screw	25	I-24
01-120A-2302	Thread Retainer Bracket	7	A-16	06-012A-2302	Feed Bar Shaft	15	E-14	91-003R-3710	Rubber Base For Bed (B)	25	I-12
01-220A-2302	Thread Retainer Disc	7	A-17	06-023P-2350	Hinge Pin	21	G-37	91-003S-2302	Knee Lifter Screw	25	I-4
01-320A-2302	Thread Retainer Spring	7	A-18	06-027G-1230	Spring	21	G-5	91-007A-2302	Thread Stand Assembly	25	I-17
01-420A-2302	Thread Retainer Spring Screw	7	A-19	06-036C-2500	Feed Ragulator Lever	21	G-24	91-011C-1230	Oiler	25	I-1
02-006A-2302	Feed Regulating Spindle Pin Guide	9	B-35	06-042R-1230	O-Ring	21	G-21	91-101A-2302	Drip Pan	25	I-2
02-009G-2302	Feed Regulating Spindle Pin Guide Spring	9	B-38	06-053W-1230	Washer	21	G-23	91-101C-8270	Machine Head Cover	25	I-6
02-010A-2302	Feed Regulating Knob Complete	9	B-39	06-101A-2302	Feed Lift Rock Shaft	15	E-1	91-102C-1230	Driver (Large)	25	I-8
02-011W-2302	Feed Regulating Knob Screw Washer	9	B-41	06-103A-2302	Feed Bar Slide Block Crank	15	E-4	91-103C-1230	Driver (Middle, Small)	25	I-9
02-012M-2302	Feed Regulating Knob Cover Plate	9	B-42	06-103A-2350	Feed Regulator Link	21	G-30	AS-006639	Post Ass'y	19	F-68
02-014M-2302	Arm Shaft Bushing (Back) Oil Wick (Upper)	9	B-9	06-104P-2350	Feed Connection Link Pin(A)	21	G-36	AS-002107	Knee Lifter Complete	25	I-3
02-014M-2302	Arm Shaft Bushing (Front) Oil Wick (Upper)	9	B-23	06-105A-2350	Feed Connection Link(A)	21	G-33	AS-006487	Belt Cover (조)	25	I-19
02-020A-2302	Feed Drive Eccentric Regulating Bracket	9	B-13	06-106A-2350	Feed Connection Link(B)	21	G-34	AS-006663	Arm-Bed Complete	7	A-1
02-020A-2302	Needle Vibrator Eccentric Regulating Bracket	11	C-7	06-107P-2350	Feed Adjusting Link Hinge Pin(A)	21	G-31	BE-000132	Timing Belt (345LxW19mm)	9	B-33
02-026G-2302	Needle Vibrator Eccentric Regulating Bracket Plunger Spring	11	C-11	06-109P-2350	Feed Connection Link Pin(B)	21	G-35	BE-000133	Timing Belt (170 x L * W 9.5mm)	17	F-27
02-035A-2302	Arm Shaft Bushing (Front)	9	B-21	06-110P-2350	Feed Connection Link Pin(C)	21	G-32	BR-000165	Ball Bearing	27	J-29
02-038W-2302	Needle Vibrator Gear Shaft Washer	11	C-19	06-111A-2302	Feed Drive Rock Shaft	15	E-13	BR-000188	Ball bearing (6000ZZ)	21	G-45
02-039S-2302	Arm Shaft Connection Belt Pulley Position Screw	9	B-11	06-115A-2302	Feed Bar	15	E-18	BR-000189	Bearing (608ZZ)	17	F-24
02-040S-2302	Arm Shaft Connection Belt Pulley Screw	9	B-12	06-116A-2302	Feed Bar Slide Block	15	E-21	BR-000190	Ball Bearing (608ZZ)	17	F-48
02-101A-2302	Arm Shaft	9	B-1	06-119A-1370	Feed Ragulator	21	G-13	CL-000089	Feed Drive Rock Shaft Collar	15	E-16
02-103A-7400	Take-Up Lever Drive Stud	11	C-48	06-125A-2500	Reverse Feed Control Lever Shaft	21	G-22	GP-000121	Hook	17	F-14
02-105A-2302	Feed Regulating Spindle	9	B-34	06-126A-250A	Reverse Feed Lever Crank Ass'y	21	G-18	GP-000123	Bobbin Case	17	F-54
02-107A-2302	Feed Regulating Spindle Pin Guide Plate	9	B-36	06-220A-2350	Collar	21	G-10	GP-000126	Bobbin	17	F-55
02-113A-2302	Arm Shaft Bushing (Back)	9	B-7	06-221A-2350	Feed Adjusting Shaft	21	G-12	GP-009725	Face Plate	7	A-3
02-115M-2302	Arm Shaft Bushing (Back) Oil Wick (Lower)	9	B-10	07-005A-2302	Hook Drive Bevel Pinion	17	F-5	GP-009928	Take-Up Lever Cover	7	A-12
02-136R-2302	Arm Shaft Bushing (Front) Oil Plug	9	B-24	07-010A-2302	Hook Shaft Bevel Pinion	17	F-11	GP-011203	Needle Bar	11	C-58
02-232A-2302	Feed Lift Connection Eccentric	9	B-17	07-011W-1230	Washer	25	I-21	GP-012151	Needle Bar Frame	11	C-24
04-002P-2302	Needle Bar Frame Hinge Stud	11	C-25	07-103A-2302	Hook Drive Bevel Pinion Shaft Belt Pulley Collar	17	F-2	GP-012429	Pulley	9	B-4
04-003P-2302	Needle Bar Frame Guide Stud	11	C-27	07-104A-2302	Hook Drive Bevel Pinion Shaft	17	F-4	GP-016078	Head Support Pole	25	I-18
04-006C-2302	Needle Bar Thread Guide	11	C-31	07-106A-146L	Bobbin Case Complete	17	F-54	GP-016930	Feed Regulator Dial Shaft	21	G-7
04-009C-2302	Needle Bar Thread Eyelet	11	C-34	07-107A-2302	Hook Shaft Bushing	17	F-7	GP-017337	Hook Shaft	17	F-10
04-009C-3710	E-Ring(Ø5)	21	G-14	07-225A-64L7	Bobbin	19	F-55	GP-017562	Needle Bar Crank	9	B-25
04-009C-3710	E-Ring(Ø5)	21	G-38	07-225A-64L7	Bobbin	25	I-13	GP-018093	Feed Lift Connection Crank	15	E-8
04-104A-2302	Needle Bar Frame Pitman Eccentric Stud	11	C-29	09-005C-8270	Feed Dog Lever Retainer Washer	19	F-59	GP-022421	Lever For Feed Dog	19	F-58
04-114A-2302	Take-Up Lever	11	C-38	09-006S-8270	Shaft Feed Dog Lever Slide Block	19	F-62	GP-026260	Cam #1(2 Point)	27	J-1-1
04-116A-2302	Needle Bar Connecting Link	11	C-41	09-008S-8270	Screw For Feed Dog Lever Slide Block	19	F-61	GP-026261	Cam #2(3 Point)	27	J-1-2
04-117P-2302	Needle Bar Connecting Link Hinge Stud	11	C-42	09-009W-8270	Washer	19	F-64	GP-026262	Feed Ragulator Shaft	21	G-15
04-120A-2302	Needle Bar Connecting Link Block	11	C-45	09-107A-8270	Feed Dog Lever Slide Block	19	F-63	GP-026263	Cam #3(4 Point)	27	J-1-3
04-121A-2302	Needle Bar Connecting Link Block Guide	11	C-46	10-004S-SW66	Washer	25	I-23	GP-026268	Gear Plate	27	J-2
04-123A-2302	Needle Bar Connecting Stud	11	C-50	11-7000-SE55	Synchronizer	23	H-1	GP-026269	Gear Plate Housing	27	J-3
04-124A-2302	Needle Bar Connecting Stud Swivel	11	C-51	16-001A-2302	Needle Vibrator Pinion	11	C-1	GP-026270	Cam Fix Shaft	27	J-4
04-125C-2302	Take-Up Auxiliary	11	C-53	16-003A-2302	Needle Vibrator Gear	11	C-3	GP-026275	Cam Rotate Gear	27	J-6

Index

Parts No.	Name of Parts	Page	Ref.No.	Parts No.	Name of Parts	Page	Ref.No.	Parts No.	Name of Parts	Page	Ref.No.
GP-026277	Cam Rotate Gear Connect Shaft	27	J-6-1	GP-043439	Feed Bar Shaft	15	E-14	SC-0129-7400	Screw (1/4"n=40)	17	F-1
GP-026278	Driving Gear	27	J-7	GP-043679	Feed Lift Rock Shaft	15	E-1	SC-0129-7400	Screw(1/4"n=40)	21	G-11
GP-026279	Stitch Motion Plate Fix Housing	27	J-5	GP-056099	Needle Bar	11	C-33	SC-0133-1230	Screw (1/8"n=44)	11	C-54
GP-026280	Gear Plate Fix Hexagon(Left)	27	J-8	HG-000006	Hinge	17	F-37	SC-0142-2302	Screw (1/8"n=44)	17	F-13
GP-026281	Gear Plate Fix Hexagon(Right)	27	J-9	PN-000267	Dial Pin	21	G-6	SC-0171-2302	Screw (3/16"n=28)	11	C-18
GP-026282	Stitch Motion Plate Fix Bush	27	J-10	PN-000273	Pin	21	G-4	SC-0174-1230	Screw(11/64"n=40)	23	H-3
GP-026283	Middle Gear Fix Shaft	27	J-11	PN-000416	Cam Connect Pin	27	J-37	SC-0174-1230	Screw(11/64"n=40)	21	G-9
GP-026284	Middle Gear1	27	J-13	PN-000417	Cam Fix Pin	27	J-44	SC-0174-1230	Screw(11/64"n=40)	21	G-20
GP-026285	Middle Gear2	27	J-14	PN-000449	MS Pin (Ø3, L=15)	21	G-47	SC-0175-1230	Screw (11/64"n=40)	19	F-60
GP-026286	Stitch Motion Plate	27	J-15	PN-000450	Spring Pin (Ø3 * 15)	17	F-28	SC-0175-1230	Screw(11/64"n=40)	21	G-28
GP-026287	Cam Ring Connect Rod	27	J-16	RJ-000085	Cam Ring	27	J-19	SC-0175-1230	Screw(11/64"n=40)	21	G-29
GP-026288	Connecting Rod	27	J-17	RJ-000086	Fixing Ring	27	J-21	SC-0179-3710	Screw (11/64"n=40)	13	D-7
GP-026289	Stitch Motion Plate Fix Shaft	27	J-20	RJ-000087	Snap Ring	27	J-33	SC-0184-1600	Screw(3/16"n=28)	21	G-19
GP-026290	Du Bush 1	27	J-22	SC-000568	Screw (11/64"n=40)	19	F-57	SC-0185-1230	Screw(3/16"n=32)	21	G-26
GP-026384	Cam Handle	27	J-41	SC-000818	Stitch Motion Plate Screw	27	J-24	SC-0186-1230	Screw(3/16"n=32)	21	G-25
GP-026388	Du Bush 2	27	J-23	SC-000819	Stitch Motion Plate Rock Screw	27	J-26	SC-0187-2302	Screw (5/16"n=28)	17	F-52
GP-028638	Model Mark	7	A-2	SC-000820	Fixing Ring Set Screw	27	J-27	SC-0192-2302	Screw (3/16"n=28)	9	B-8
GP-028898	Feed Lift Connection	9	B-20	SC-000821	Stitch Motion Plate Fix Housing Screw	27	J-28	SC-0192-2302	Screw (3/16"n=28)	11	C-47
GP-028899	Feed Drive Connection	9	B-16	SC-000822	Gear Plate Housing Screw	27	J-30	SC-0193-1230	Screw(3/16"n=28)	21	G-1
GP-028917	Knee Lifter Connection Lever Lifting Rod	13	D-22	SC-000823	Cam Rotate Gear Screw	27	J-31	SC-0194-2302	Screw (3/16"n=28)	15	E-5
GP-028950	Presser Foot (DPK-5)	13	D-16	SC-000824	Cam Rotate Gear Connect Shaft Set Screw	27	J-32	SC-0206-2302	Screw (9/32"n=28)	9	B-3
GP-028953	Feed Adjusting Link Shaft Plate(1)	21	G-40	SC-000825	Gear Plate Fix Hexagon Fix Screw	27	J-34	SC-0207-2302	Screw (9/16"n=20)	13	D-1
GP-028954	Feed Adjusting Link Shaft Plate(2)	21	G-41	SC-000826	Stitch Motion Plate Connect Rod Screw	27	J-38	SC-0217-2302	Screw (9/32"n=28)	11	C-12
GP-028955	Feed Adjusting Link Shaft	21	G-42	SC-000827	Stitch Motion Plate Connect Rod Set Screw	27	J-42	SC-0221-2302	Screw (1/4"n=24)	15	E-11
GP-028957	Presser Foot Lifter Connection Plate	13	D-23	SC-000828	Driving Gear Set Screw	27	J-43	SC-0299-2302	Screw (1/4"n=24)	9	B-14
GP-029156	Timing Belt Pulley (Upper 1)	9	B-28	SC-000911	Screw (M6×12)	9	B-31	SC-0299-2302	Screw (1/4"n=24)	11	C-14
GP-029157	Arm Shaft Connection Belt Pulley Plate	9	B-29	SC-000912	Screw (M4×12)	9	B-32	SC-0313-2302	Screw (15/64"n=28)	9	B-18
GP-029158	Arm Shaft Connection Belt Pulley Spring Flange	9	B-30	SC-000913	Screw (M8×8)	13	D-24	SC-0315-2302	Screw (9/64"n=40)	13	D-17
GP-029160	Needle Plate	11	C-59	SC-000914	Screw (M6×16)	15	E-20	SC-0349-2302	Screw (15/64"n=28)	7	A-4
GP-029198	Feed Lift Connection Crank	15	E-19	SC-000915	Screw (M5×35)	21	G-46	SC-0364-2302	Screw (1/4"n=24)	11	C-13
GP-029199	Feed Regulator Rod	21	G-39	SC-000916	Screw (M4×12)	21	G-48	SC-0499-1230	Screw (11/64"n=40)	7	A-15
GP-029209	Feed Adjusting Crank	21	G-43	SC-000917	Screw (M5×5)	21	G-49	SC-0499-1230	Screw (11/64"n=40)	15	E-22
GP-029210	Spacer	21	G-44	SC-000918	Screw (M5×18)	21	G-50	SC-0501-2302	Screw (11/64"n=40)	7	A-13
GP-029212	Spring Holder Plate	21	G-51	SC-000919	Screw (M4×8)	21	G-52	SC-0504-1230	Screw (1/4"n=40)	11	C-30
GP-029214	Hook Complete	17	F-14	SC-000920	Screw (M3×6)	17	F-19	SC-0504-1230	Screw (1/4"n=40)	11	C-44
GP-029215	Feed Dog	17	F-15	SC-000927	Screw (M5×5)	17	F-25	SC-0504-1230	Screw(1/4"n=40)	21	G-27
GP-029216	Timing Belt Pulley (Lower 1)	17	F-16	SC-000928	Screw (M4×25)	17	F-29	SC-0507-1230	Screw (15/64"n=28)	9	B-22
GP-029217	Lower Shaft Pulley Flange	17	F-17	SC-000929	Screw (M4×30)	17	F-33	SC-0507-1230	Screw (15/64"n=28)	17	F-8
GP-029218	Bobbin Case Stop	17	F-18	SC-000930	Screw (M3×5)	17	F-36	SC-0507-1230	Screw(15/64"n=28)	21	G-17
GP-029219	Feed Dog Connection Bar	17	F-20	SC-000931	Screw (M2×4)	17	F-38	SC-0508-1230	Screw (15/64"n=28)	9	B-6
GP-029220	Timing Belt Rock Plate	17	F-21	SC-000932	Screw (M2×2)	17	F-39	SC-0514-7400	Screw (15/64"n=28)	7	A-20
GP-029221	Timing Belt Pulley (Upper 2)	17	F-22	SC-000933	Screw (M6×15)	17	F-42	SC-0514-7400	Screw (15/64"n=28)	11	C-26
GP-029222	Timing Belt Pulley Upper Shaft	17	F-23	SC-000934	Screw (M6×6)	17	F-49	SC-0514-7400	Screw (15/64"n=28)	11	C-28
GP-029223	DU Bush (MB0806-15FDU)	17	F-26	SC-000935	Screw (M5×10)	17	F-50	SC-0520-2302	Screw (1/8"n=44)	7	A-34
GP-029224	Hook Box	17	F-31	SC-000936	Screw (M6×15)	23	H-7	SC-0524-2302	Screw (1/8"n=44)	9	B-37
GP-029225	Timing Belt Cover	17	F-32	SC-000937	Screw (M4×5)	15	E-23	SC-0524-2302	Screw (1/8"n=44)	9	B-40
GP-029226	Hook Cover	17	F-34	SC-001213	Screw (9/32"n=28)	9	B-27	SC-0524-2302	Screw(1/8"n=44)	23	H-2
GP-029227	Hook Box Cover	17	F-35	SC-0102-2302	Screw (9/32"n=28)	9	B-5	SC-0531-2302	Screw (9/64"n=40)	7	A-11
GP-029228	ND Magnet (Ø6 * L=5)	17	F-40	SC-0110-1230	Screw (15/64"n=28)	11	C-52	SC-0531-2302	Screw (9/64"n=40)	7	A-31
GP-029229	Hook Box Rock Plate	17	F-41	SC-0110-1230	Screw (15/64"n=28)	15	E-10	SC-0531-2302	Screw (9/64"n=40)	11	C-37
GP-029230	Timing Belt Pulley (Lower 2)	17	F-44	SC-0112-2302	Screw (9/32"n=28)	9	B-26	SC-0532-4125	Screw (15/64"n=28)	15	E-9
GP-029231	Timing Belt Pulley Lower Shaft	17	F-45	SC-0114-1230	Screw (15/64"n=28)	9	B-19	SC-0543-2302	Screw (11/64"n=40)	7	A-9
GP-029232	Timing Belt Pulley Lower Shaft Rock Plate	17	F-46	SC-0114-1230	Screw (15/64"n=28)	11	C-6	SC-0543-2302	Screw (11/64"n=40)	25	I-22
GP-029233	Timing Belt Pulley Lower Shaft Holder	17	F-47	SC-0114-1230	Screw (15/64"n=28)	11	C-40	SC-0549-2302	Screw (1/8"n=44)	11	C-32
GP-029234	Feed Dog Rock Link	17	F-51	SC-0114-1230	Screw (15/64"n=28)	13	D-13	SC-A129-4515	Screw (1/4"n=40)	11	C-4
GP-029239	Synchronizer Rock Block	23	H-4	SC-0114-1230	Screw (15/64"n=28)	13	D-15	SC-A129-4515	Screw (1/4"n=40)	11	C-21
GP-029240	Synchronizer Rock Bar	23	H-5	SC-0114-1230	Screw (15/64"n=28)	17	F-9	SC-A129-4515	Screw (1/4"n=40)	17	F-3
GP-029244	Synchronizer Rock Shaft	23	H-6	SC-0127-2302	Screw (11/64"n=40)	17	F-53	SC-A129-4515	Screw (1/4"n=40)	17	F-6
GP-031205	Feed Regulator Control Plate(INSERT)	21	G-2	SC-0129-7400	Screw (1/4"n=40)	11	C-2	SC-A129-4515	Screw (1/4"n=40)	17	F-12
GP-032446	Take-Up Lever Hinge Stud	11	C-39	SC-0129-7400	Screw (1/4"n=40)	11	C-43	SC-A131-4522	Screw (1/8"n=44)	11	C-36
GP-032771	Needle Plate (Option)	11	C-60	SC-0129-7400	Screw (1/4"n=40)	15	E-3	SC-A301-4119	Screw (9/64"n=40)	9	B-43
GP-043414	Needle Thread Guide Plate	11	C-53	SC-0129-7400	Screw (1/4"n=40)	15	E-17	SN-000132-00	Stitch Motion Plate Nut	27	J-25

