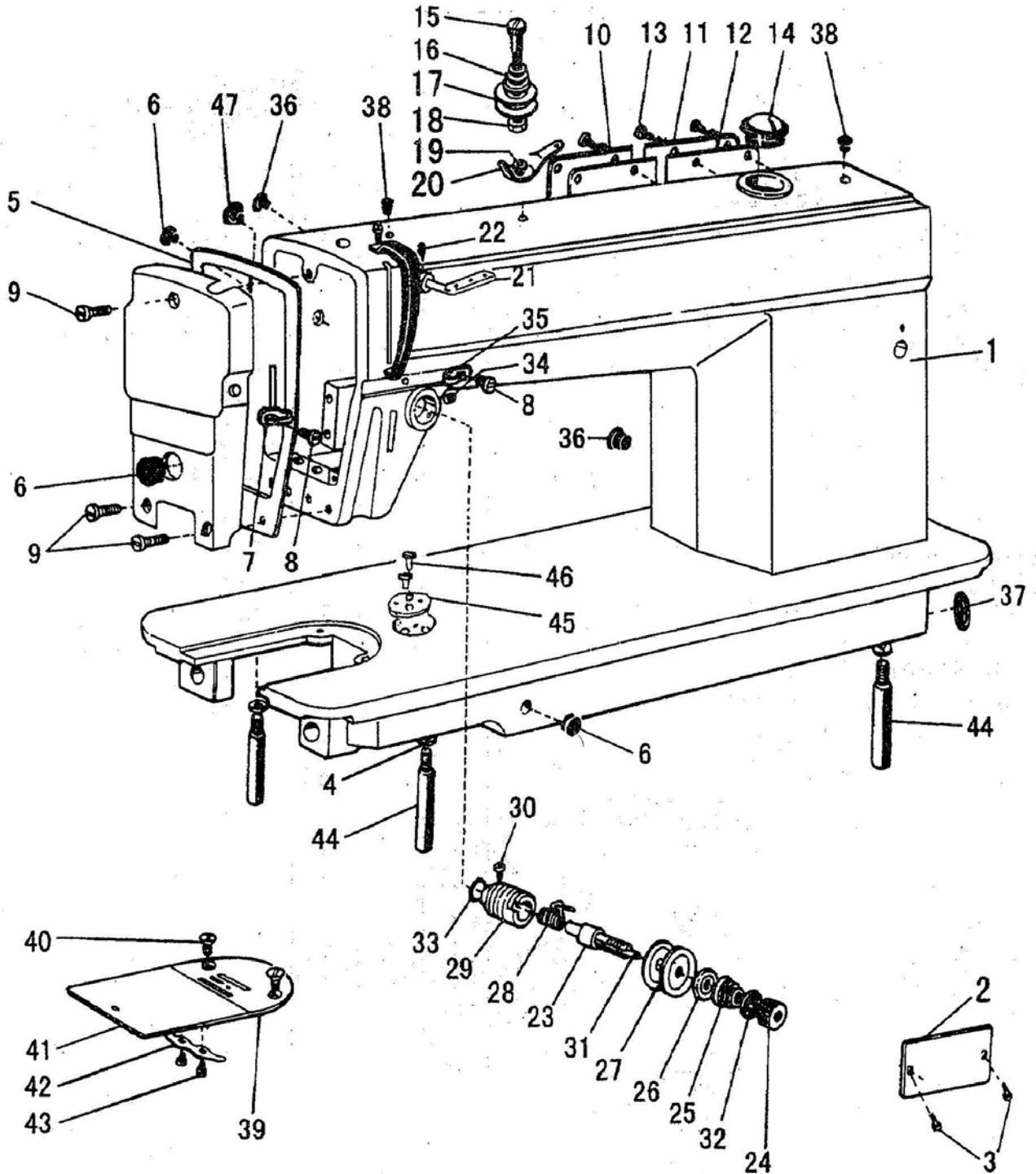


## DY-H340

A. 본체기구 / Arm Bed & It's Accessories .....	17
B. 침봉, 천평, 상축, 견축 기구 / Needle Bar And Take-Up, Arm Shaft Mechanism ..	20
C. 역전 기구 / Stitch Regulator Mechanism .....	23
D. 이송 기구 / Feeding And Feed Lifting Mechanism .....	25
E. 압봉 기구 / Presser Foot Mechanism .....	27
F. 상부 이송 기구/ Presser Lifting Feeding Mechanism .....	29
G. 급유 기구 / Oil Lubrication Mechanism .....	32
H. 유수판 기구 / Oil Reservoir And Other Accessories .....	34
I. 사권 기구 / Bonnin Winder Mechanism .....	36
J. 악세서리 / Accessories .....	38

# A.ARM BED AND ITS ACCESSORIES



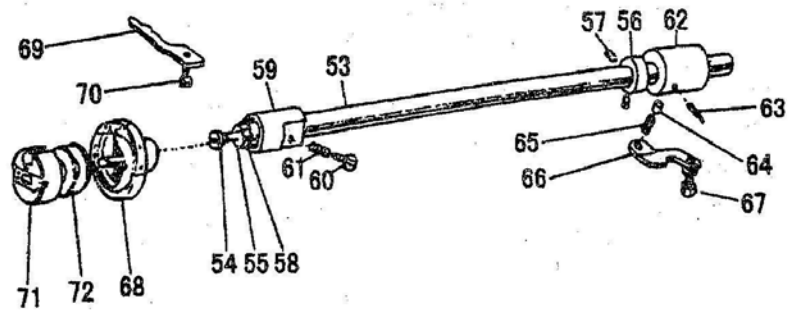
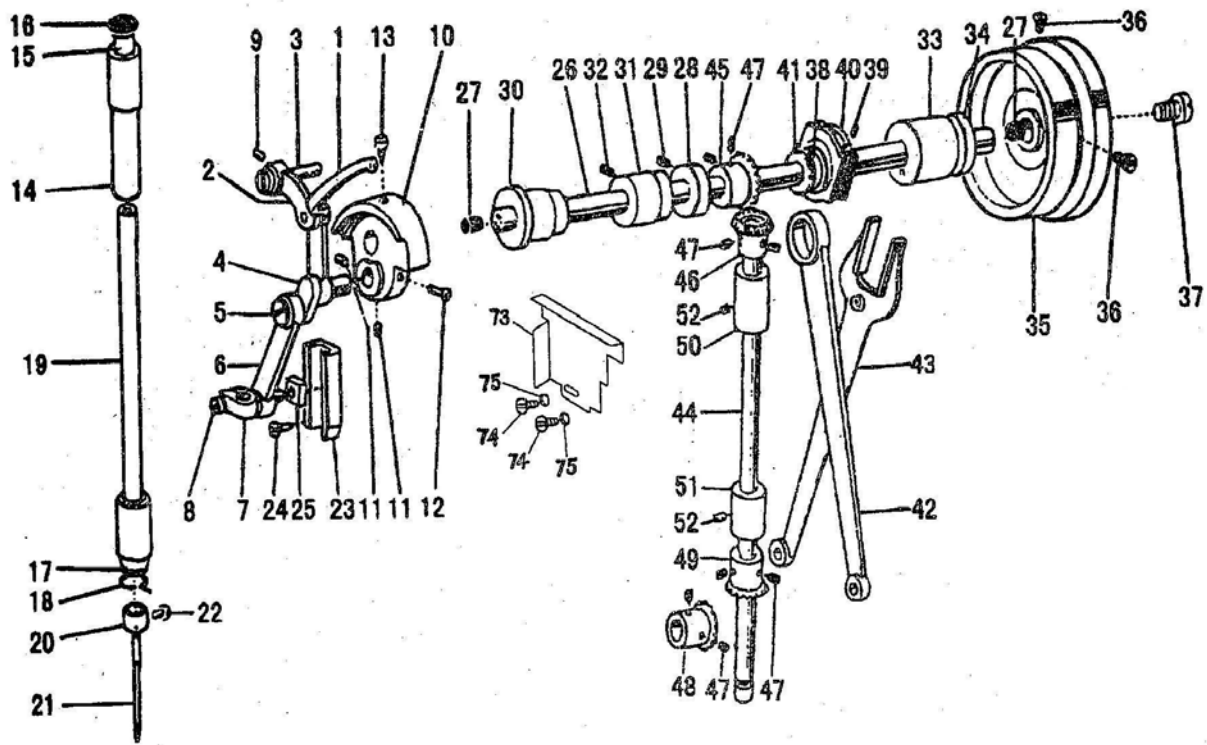
## A. ARM BED AND ITS ACCESSORIES

Fig. No.	Part No.	Description	H 3 4 0			Remarks
A01	H2104B0652	Arm	1			
A01	H2304B0652	Arm				
A02	H2106B0065	Trade mark plate	1			
A02	H3800B2010	Trade mark plate				
A02	H2900B2010	Trade mark plate				
A02	H2306B0065	Trade mark plate				
A03	H924025050	rivet	4			GB/T827 $\phi$ 2.5×5
A04	H005008060	Spring washer	2			GB/T93 6
A05	H2100B2050	Face plate	1			
A05	H2100B2110	Face plate				
A05	H2300B2050	Face plate				
A06	HA306B0674	Rubber plug ( $\phi$ 11.8 )	1			
A07	HA607B0671	Thread guide on face plate	1			
A08	HA106B0676	Thread guide screw	1			SM9/64(40)×6
A09	HA700B2030	Face plate screw	3			SM11/64(40)×20
A10	H2100B2070	Arm sidecover(left)	1			
A11	H2100B2080	Arm sidecover(right)	1			
A12	H2100B2090	Gasket for arm side cover	1			
A13	HA300B2170	Screw group	8			SM11/64(40)×9
A14	H1210B0671	Check window	1			
A15	HA112B0691	Screw type tension stud	1			SM11/64(40)×16
A16	HA112B0692	Spring for pre-tension	1			
A17	HA112B0693	Disc for pre-tension	2			
A18	HA112B0694	Spacer for pre-tension	1			
A19	HA112B0695	Pre-tension thread guide	1			
A20	H007013030	Stop ring	1			GB/T896 3
A21	HA100B2100	Three-hple thread guide	1			
A22	HA100B2110	Set screw	1			SM11/64(40)×5.5
A23	HA115B0701	Thread tension stud	1			SM1/4(40)×17
A24	HA310B0701	Oil thumb nut	1			
A25	HA505B0671	Thread tension spring	1			
A26	HA310B0702	Thread tension releasing disc	1			
A27	HA310B0705	Thread tension disc	2			
A28	HA505B0672	Thread take-up spring	1			
A29	HA310B0703	Thread tension regulating bushing	1			
A30	HA115B0708	Set screw	1			SM9/64(40)×4
A31	HA115B0709	Thread tension releasing pin	1			
A32	HA115B7010	Stop disc	1			
A33	HA115B7011	Rubber ring	1			
A34	HA300B2080	Set screw	1			SM15/64(28)×6.8
A35	HA600B2050	Thread guide at arm center	1			
A36	HA300B2090	Rubber plug ( $\phi$ 8.8 )	2			
A37	HA300B2100	Rubber plug ( $\phi$ 27 )	1			

## A. ARM BED AND ITS ACCESSORIES

Fig. No.	Part No.	Description	H 3 4 0				Remarks
A38	HA300B2110	Red rubber plug ( $\phi$ 5.7 )	2				
A39	H2100B2120	Needle plate	1				
A39	H1100B2080	Needle plate					
A39	H2900B2030	Needle plate					
A39	H2300B2060	Needle plate					
A40	HA300B2190	Needle plate screw	2				SM11/64(40) $\times$ 4.5
A41	HA124B0711	Slide plate	1				
A42	HA124B0712	Slide plate spring	1				
A43	HA124B0713	Screw	2				SM3/32(56) $\times$ 2.2
A44	HA100B2220	Leg	3				
A45	HA300B2140	Plate for guide	1				
A46	HA300B2130	Screw	2				SM11/64(40) $\times$ 5
A47	HA307B0673	Rubber plug	1				

# B.NEEDLE BAR AND TAKE-UP, ARM SHAFT AND VERTICAL SHAFT MECHANISM



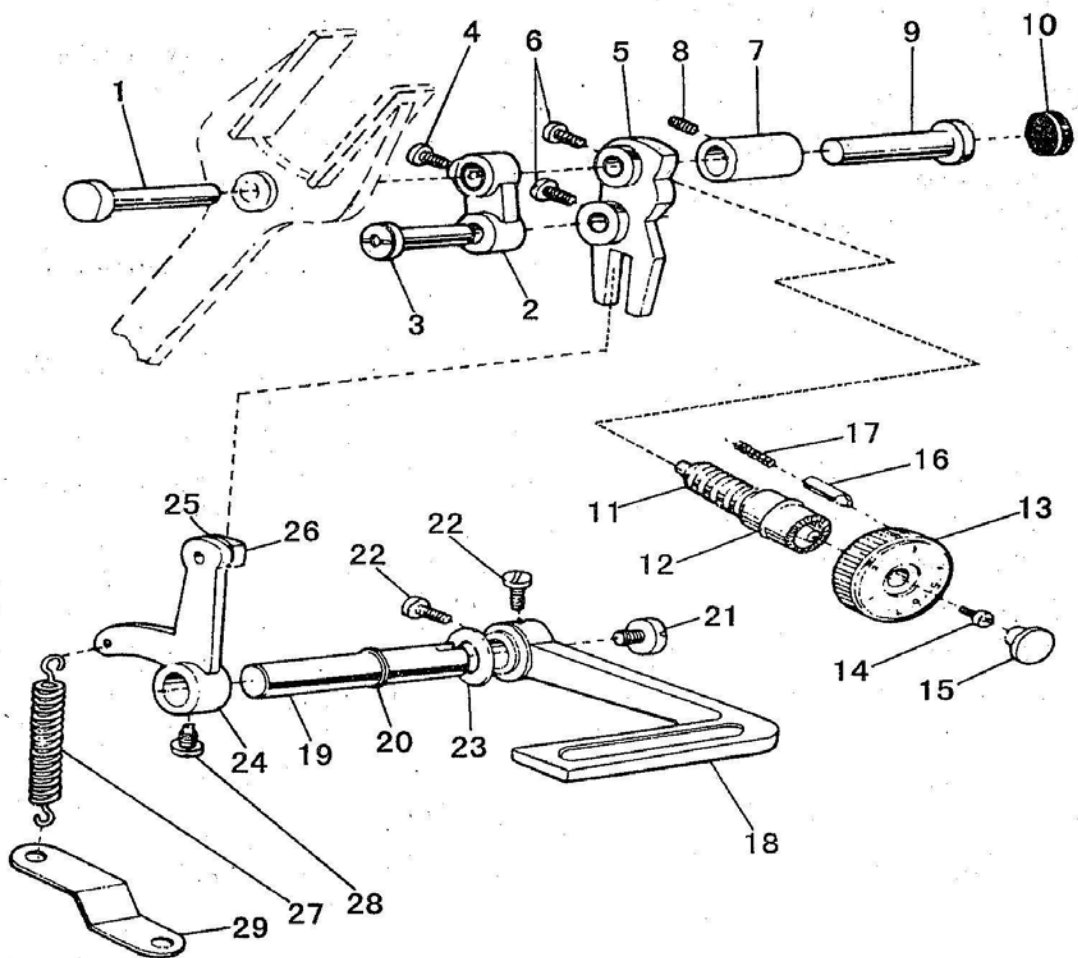
## B. NEEDLE BAR AND TAKE-UP, ARM SHAFT AND VERTICAL SHAFT MECHANISM

Fig. No.	Part No.	Description	H 3 4 0				Remarks
B01	H11111C104	Thread take-up lever	1				
B02	H11112C104	Thread take-up lever link	1				
B03	HA104C0653	Hinge pin	1				
B04	HA504C0651	Thread take-up crank	1				
B04	H2204C0652	Thread take-up crank					
B04	HA104C0655	Needle bearing	2				
B05	HA104C0656	Set screw ( left-handed )	1				SM9/64(40)×7
B06	HA304C0653	Needle bar link	1				
B07	HA104C0658	Needle bar adaptor	1				
B08	HA104C0659	Screw	1				SM9/64(40)×6
B09	HA100C2020	Set screw	1				SM15/64(28)×10
B10	HA307C0661	Needle bar crank	1				
B11	HA307C0662	Set screw	2				SM1/4(40)×6
B12	HA100C2060	Set screw	1				SM9/32(28)×13
B13	HA100C2070	Set screw	1				SM9/32(28)×14
B14	HA100C2080	Needle bar bushing ( upper )	1				
B15	HA100C2100	Felt plug	1				
B16	HA300C2050	Red rubber plug ( $\phi$ 8.8 )	1				
B17	HA804B0652	Needle bar bushing ( lower )	1				
B18	HA500C2060	Thread guide for needle bar bushing	1				
B18	HA100B2140	Thread guide for needle bar bushing					
B19	H2100C2010	Needle bar	1				
B20	HA500C2030	Thread guide for needle bar	1				
B21	H2000G2030	Needle	1				DP×17 #22
B21	H3800C2010	Needle					DP×17 #24
B21	H2900C2010	Needle					DP×17 #18
B22	HA100C2170	Needle clamp screw	1				SM1/8(44)×4.5
B23	HA100C2180	Guide for slide block	1				
B24	HA100C2190	Set screw	2				SM11/64(40)×8
B25	HA100C2200	Slide block	1				
B26	HA304D0651	Arm shaft	1				
B27	HA104D0652	Rubber plug ( $\Phi$ 7.4×10 )	2				
B28	HA108G0661	Collar for	1				
B29	HA105D0662	Set screw	2				SM1/4(40)×4
B30	HA100D2030	Arm shaft bushing(left)	1				
B31	HA100D2040	Arm shaft bushing(middle)	1				
B32	HA100C2020	Set screw	1				SM15/64(28)×10
B33	HA300D2020	Arm shaft bushing(right)	1				
B34	HA306D0066	Oil seal	1				
B35	H2000C2040	Balance wheel	1				
B36	HA110D0672	Set screw	2				SM15/64(28)×12
B37	HA100D2080	Screw	1				SM11/32(28)×10
B38	H11211D105	Feed and feed lifting eccentric	1				

## B. NEEDLE BAR AND TAKE-UP, ARM SHAFT AND VERTICAL SHAFT MECHANISM

Fig. No.	Part No.	Description	H 3 4 0			Remarks
B39	HA3411D308	Set screw	2			SM15/54(28)×7
B40	HA3411D208	Eccentric sleeve	1			
B41	HA112D3012	Retaining ring	1			
B42	HA112D3013	Crank rod for feed lifting rock shaft	1			
B43	HA504D0651	Feed forked connection	1			
B44	H2100D2010	Vertical shaft	1			
B45	HA113D2112	Bevel gear for arm shaft	1			
B46	HA113D2122	Bevel gear for vertical shaft( upper )	1			
B47	HA108C0663	Set screw	8			SM1/4(40)×7
B48	HA113D2212	Bevel gear for hook shaft	1			
B49	HA113D2222	Bevel gear for vertical shaft( lower )	1			
B50	HA100D2110	Vertical shaft bushing( upper )	1			
B51	HA600D2010	Vertical shaft bushing( lower )	1			
B52	HA100C2020	Set screw	2			SM15/64(28)×10
B53	HA604E0651	Rotating hook shaft	1			
B54	HA1111E104	Filter screw	1			SM3/16(32)×9
B55	HA1111E204	Filter	1			
B56	HA305E0661	Collar for hook shaft	1			
B57	HA305E0662	Set screw	2			SM15/64(28)×4.5
B58	HA106E0071	Oil seal for rotating hook shaft	1			
B59	HA100E2040	Hook shaft bushing ( left )	1			
B60	HA300E2030	Oil adjusting screw	1			SM15/64(28)×25.5
B60	HA100E2050	Oil adjusting screw	1			SM11/64(40)×28.5
B61	HA100E2060	Spring for oil adjuster	1			
B62	HA311E0671	Hook shaft bushing ( right )	1			
B63	HA110E0672	Oil pipe for hook shaft bushing	1			
B64	HA300E2100	Plunger	1			
B65	HA300E2110	Plunger spring	1			
B66	HA600E2020	Guide plate	1			
B67	HA104F0654	Screw	1			SM15/64(28)×10
B68	H1105E0066	Rotating hook complete	1			
B68	H2300E2010	Rotating hook complete	1			
B69	H2100E2010	Rotating hook positioner	1			
B70	HA100E2150	Screw	1			SM11/64(40)×13
B71	HA608E0067	Bobbin case	1			
B72	H1100E2010	Bobbin	1			
B73	H2100B2100	Arm sidecover baffle	1			
B74	HA712N6912	Screw	2			
B75	H005001040	Washer	2			GB/T97.1 4

# C. STITCH REGULATOR MECHANISM

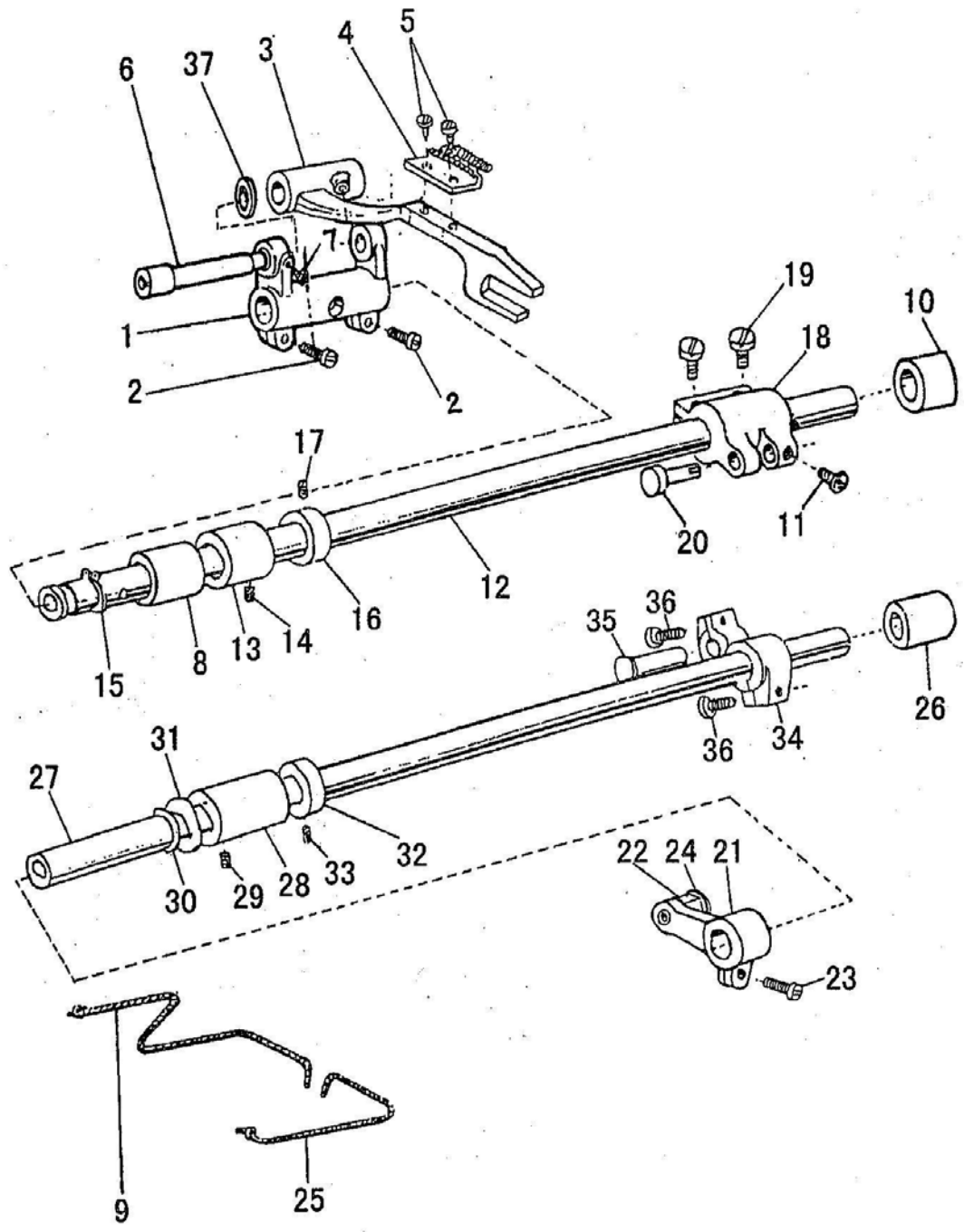




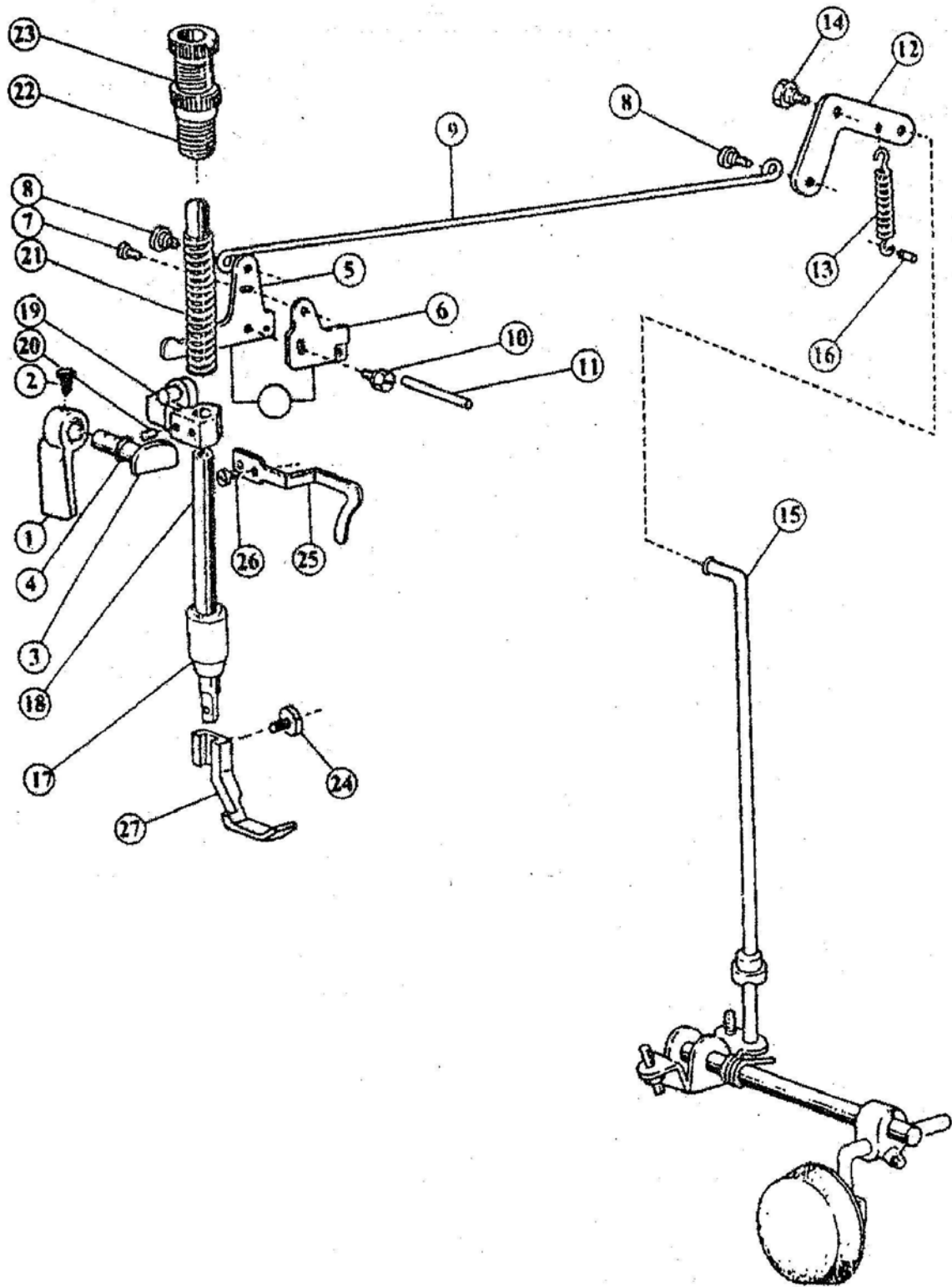
## C. STITCH REGULATOR MECHANISM

Fig. No.	Part No.	Description	H 3 4 0				Remarks
C01	HA104F0651	Hinge pin	1				
C02	HA104F0652	Feed connecting link	1				
C03	HA104F0653	Hinge pin for feed connecting link	1				
C04	HA104F0654	Screw	1				SM15/64(28)×10
C05	H1000F2010	Feed regulator	1				
C05	HA105F0661	Feed regulator					
C06	HA104F0654	Screw	2				SM15/64(28)×10
C07	HA300F2020	Feed regulator bushing	1				
C08	HA100C2020	Set screw	1				SM15/64(28)×10
C09	HA100F2040	Hinge pin for feed regulator	1				
C10	HA700B2120	Rubber plug ( Φ20×6 )	1				
C11	HA506F0671	Feed regulator screw bar	1				
C11	HA109F0671	Feed regulator screw bar					
C12	HA109F0674	O-ring	2				Φ 14×2.4
C13	H1104F0651	Dial	1				
C13	H3100E2070	Dial					
C13	HA307F0661	Dial					
C14	HA109F0673	Screw	1				SM3/16(28)×8
C15	HA300F2050	Rubber plug	1				
C16	HA100F2080	Stopper pin	1				
C17	HA100F2090	Spring for stopper pin	1				
C18	HA309F0671	Reverse feed lever	1				
C19	HA113F3021	Reverse feed lever shaft	1				
C20	HA113F3022	O-ring	1				Φ 9×1.9
C21	HA113F0683	Screw	1				SM3/16(28)×6.5
C22	HA104F0654	Screw	2				
C23	HA100F2110	Washer	1				
C24	HA115F0691	Reverse feed crank	1				
C25	HA1511F115	Slide block pin	1				
C26	HA1511F215	slide block	1				
C27	HA115F0692	Spring for feed crank	1				
C28	HA100F2130	Screw	1				SM15/64(28)×10
C29	HA100F2140	Bracket spring	1				

# D. FEEDING AND FEED LIFTING MECHANISM



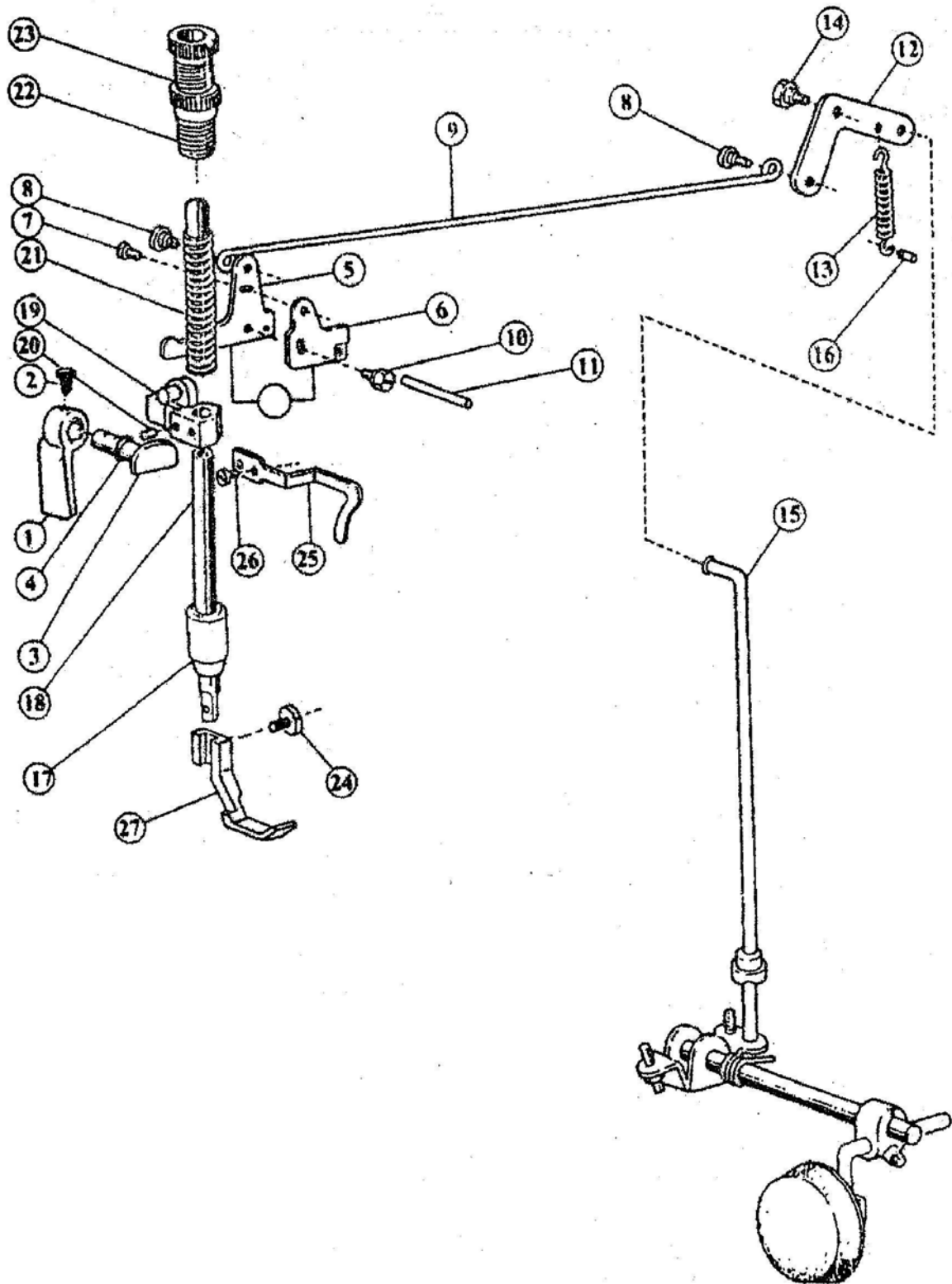
# E.PRESSER FOOT MECHANISM



## D. FEEDING AND FEED LIFTING MECHANISM

Fig. No.	Part No.	Description	H 3 4 0			Remarks
D01	HA104G0011	Feed rock shaft crank (left)	1			
D02	HA304G0656	Screw	2			SM3/16(28)×15
D03	H2004L0661	Feed bar	1			
D04	HA104G0653	Feed dog	1			
D04	H1100G2110	Feed dog				
D04	H2900G2010	Feed dog				
D04	H2300G2010	Feed dog				
D05	HA104G0654	Screw	2			SM1/8(44)×6
D06	H1100G2040	Hinge pin for feed regulator	1			
D07	HA100C2190	Screw	1			SM11/64(40)×8
D08	H2100G2060	Bushing for feed rock shaft(left)	1			
D09	HA304G0655	Oil braid	1			
D10	H2100G2050	Bushing for feed rock shaft(right)	1			
D11	HA104F0654	Screw	1			SM15/64(28)×10
D12	H2100G2010	Feed rock shaft	1			
D13	H2100G2020	Bushing for feed rock shaft	1			
D14	HA305E0662	Set screw	1			SM15/64(28)×4
D15	H007009150	C-type stop ring	1			
D16	HA108G0661	Collar	1			
D17	HA105D0662	Set screw	2			SM1/4(40)×4
D18	H2100G2030	Feed rock shaft crank ( right )	1			
D19	HA104G0012	Screw	2			SM3/16(28)×12
D20	H2100G2040	Hinge pin	1			
D21	HA305G1011	Feed lifting rock shaft crank ( left )	1			
D22	HA305G1012	Shaft	1			
D23	HA111G0683	Screw	1			SM11/64(40)×12
D24	HA310G3011		1			
D25	HA305G0664	Oil braid	1			
D26	H2100G2070	Bushing for feed lifting rock shaft( right )	1			
D27	HA200G2020	Feed lifting rock shaft	1			
D28	HA100G2120	Bushing for feed lifting rock shaft	1			
D29	HA100C2020	Set screw	1			SM15/64(28)×10
D30	H007009150	C-type stop ring	1			
D31	HA100G2130	Washer	1			
D32	HA108G0661	Collar for feed lifting rock shaft	1			
D33	HA105D0662	Screw	2			SM1/4(40)×4
D34	HA306G0671	Feed lifting rock shaft crank ( right )	1			
D35	HA100G2070	Hinge pin	1			
D35	HA305E0662	Screw	1			SM11/64(40)×12
D36	HA104G0012	Screw	2			SM3/16(28)×12
D37	HA104G0656	Washer	1			

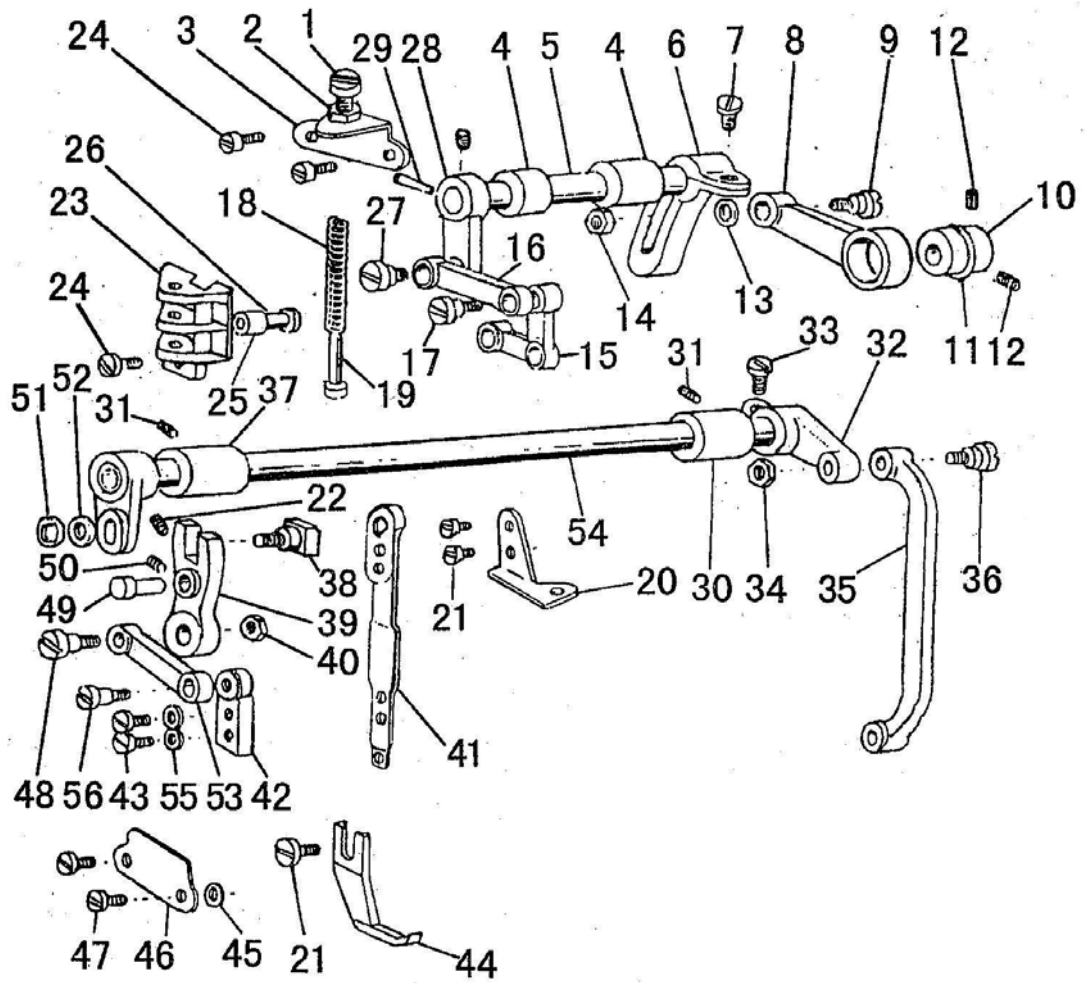
# E.PRESSER FOOT MECHANISM



## E. PRESSER FOOT MECHANISM

Fig. No.	Part No.	Description	H 3 4 0			Remarks
E01	H2104H0651	Presser bar lifter	1			
E02	HA100B2110	Set screw	1			SM11/64(40)×5
E03	H2104H0661	Presser bar lifting cam	1			
E03	H3804H0651	Presser bar lifting cam				
E04	HA300H2080	Oil seal for presser bar lifting cam	1			8×1.9
E05	HA107H1011	Knee lifter lever ( left )	1			
E06	HA305H6611	Tension releasing cam	1			
E07	HA107H1013	Screw	1			SM11/64(40)×6
E08	HA107H0662	Hinged screw	2			SM3/16(28)×3.5
E09	HA107H0663	Knee lifter rod	1			
E10	HA100H2050	Bolt	1			SM15/64(28)×13
E11	HA100H2060	Tension releasing pin	1			
E12	HA110H0671	Knee lifter lever ( right )	1			
E13	HA110H0672	Spring	1			
E14	HA100H2050	Bolt for knee lifter lever	1			SM15/64(28)×10
E15	HA306H0671	Knee lifter connecting rod	1			
E16	HA100H2080	Pin for spring	1			
E17	HA300H2090	Presser bar bushing	1			
E18	H2000I2010	Presser bar	1			
E19	H2305H0671	Presser bar lifting bracket	1			
E20	HA3411D308	Set screw	1			SM15/64(28)×7
E21	H1100H2020	Presser spring	1			
E22	H2005I0065	Pressure regulating thumb screw	1			SM1/2(28)×43
E23	HA117H0692	Lock nut	1			
E24	HA100H2150	Set screw	1			SM9/64(40)×11
E25	HA300H2120	Upper thread guide	1			
E26	HA100C2040	Screw	1			SM11/64(40)×5
E27	H2000I2040	Presser foot complete	1			
E27	H3800H2020	Presser foot complete				
E27	H2900H2020	Presser foot complete				
E27	H2300H2010	Presser foot complete				

# F. PRESSER LIFTING, FEEDING MECHANISM



## F. PRESSER LIFTING、FEEDING MECHANISM

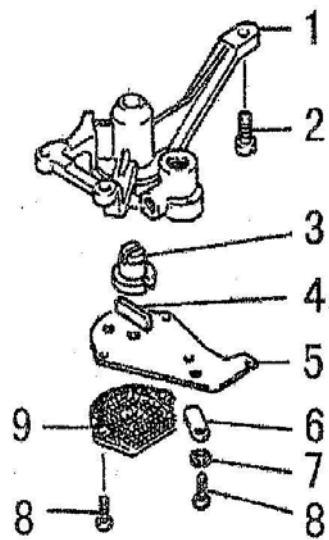
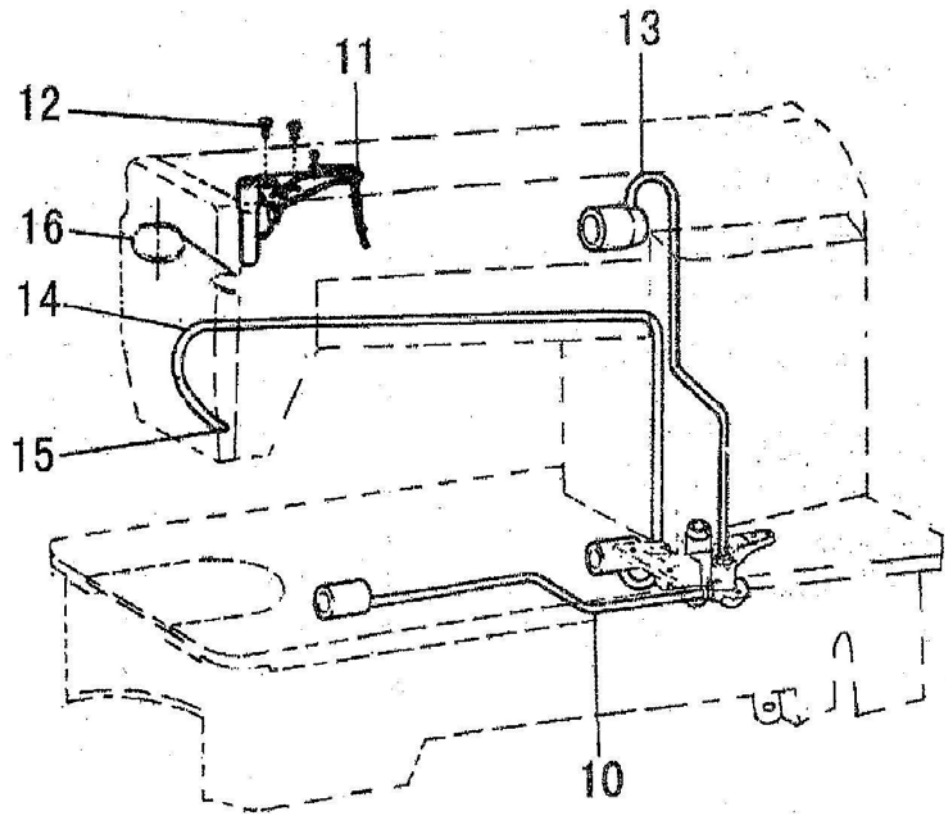
Fig. No.	Part No.	Description	H 3 4 0			Remarks
F01	H2010J0065	Lifting presser adjusting screw	1			SM9/32(28)×35
F02	H2010J0066	Lifting presser adjusting nut	1			SM9/32(28)
F03	H2100I2080	Lifting presser bracket for spring	1			
F04	H2009B0068	Presser lifting shaft bushing	2			
F05	H2011J0066	Shaft	2			
F06	H2100I2010	Presser lifting shaft	1			
F07	H2012N0652	Set screw	1			
F08	H2104I0065	Eccentric wheel rod	1			
F09	H2000J2100	Set screw	1			M6(0.75)×29
F10	H2014J0652	Eccentric wheel	1			
F11	H007009250	C-type stop ring	1			GB/T894.1 25
F12	HA307C0662	Screw	2			SM1/4(40)×6
F13	H2013J0065	Washer	1			
F14	H0030020608	Nut	1			GB/T6170 M6×0.75
F15	H2100I2020	Presser feed crank	1			
F16	H2004J0652	Presser feed crank link	1			
F17	H2004J0653	Screw	1			SM3/16(28)×12.6
F18	H2000J2050	Lifting presser spring	1			
F19	H2007J0066	Presser spring guide	1			
F20	H2100I2090	Lifting presser guide plate	1			
F21	HA100H2150	Screw	1			SM9/64(40)×13
F22	H609025180	Pin	1			GB/T879.1 2.5×18
F23	H2000J2020	Lifting presser plate	2			
F24	H2000I2050	Screw	1			SM9/64(40)×10
F25	H2000J2030	Lifting presser spring guide pin	1			
F26	H2004J0655	Feed crank guide shaft	1			
F27	H2004J0662	Screw	1			SM1/4(40)×15
F28	H2011J0065	Presser lifting crank	1			
F29	H602040200	Pin	1			GB/T117 4×20
F30	H2100I2060	Presser swing shaft bushing (right)	1			
F31	HA100B2110	Screw	2			SM11/64(40)×5.5
F32	H2012N0651	Presser swing crank(right)	1			
F33	H2012N0652	Screw	1			SM1/4(24×19.7)
F34	H2010J0066	Lifting presser adjusting nut	1			SM9/32(28)
F35	H2100I2030	Presser swing crank (right) rod	1			
F36	H2012N0066	Screw	1			SM9/32(28)×28
F37	H2100I2060	Presser swing shaft bushing (left)	1			
F38	H2013N0065	Lifting presser sway crank shaft compl	1			
F39	H2013N0069	Lifting presser sway crank	1			
F40	H2008N0066	Lock nut	1			SM1/4(40)
F41	H2004J0654	Presser rod	1			
F41	H2300I2040	Presser rod	1			
F42	H2004J0661	Presser rod guide	1			



## F. PRESSER LIFTING- FEEDING MECHANISM

Fig. No.	Part No.	Description	H 3 4 0			Remarks
F43	H2004J0067	Screw	2			SM9/64(40)×9
F44	H2100I2040	Out presser	1			
F44	H3800I2010	Out presser				
F44	H2900I2020	Out presser				
F44	H2300I2020	Out presser				
F45	H2000N0040	Space for presser rod plate	2			
F46	H2000N0030	Lifting presser rod plate	1			
F46	H2300I2030	Lifting presser rod plate				
F47	HA111G0683	Screw	2			SM11/64(40)×14.5
F48	H2008N0065	Screw	1			SM1/4(40)×26
F49	H2013N0066	Lifting presser sway crank guide pin	1			SM1/4(40)
F50	H2100I2070	Screw	1			SM3/16(32)×7
F51	H2013N0067	Presser crank connecting nut	1			SM1/4(24)
F52	H2013J0065	Washer	1			
F53	H2013N0070	Presser swing crank(left)	1			
F54	H2009N0066	Presser swing shaft	1			
F55	HA100I2050	Washer	1			
F56	H2004J0662	Screw	1			SM1/4(40)×15

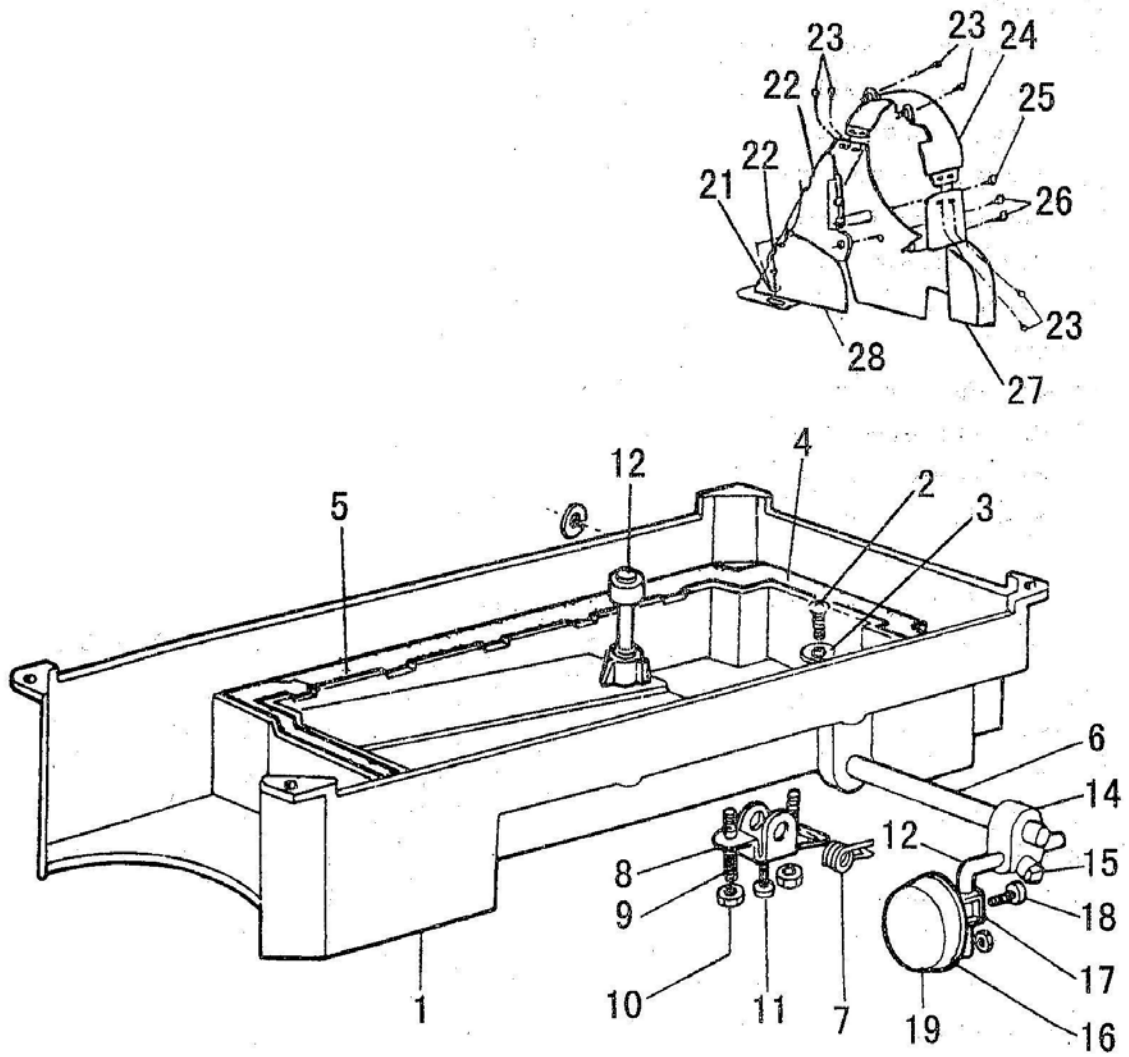
# G. LUBRICATION MECHANISM



## G. LUBRICATION MECHANISM

序号	样本编号	名称	H 3 4 0				备注
G01	H6006I8001	Oil pump body	1				
G02	HA100I2090	Screw	3				
G03	H6010I8001	Oil pump impeller	1				
G04	H6011I8001	Slider	1				
G05	H6012I8001	Oil pump fitting plate	1				
G06	HA100I2070	Oil adjusting plate	1				
G07	HA100I2050	Spring washer	1				
G08	HA300I2050	Screw	3				
G09	HA111I0065	Oil pump screen complete	1				
G10	HA113I0066	Oil pipe for hook shaft	1				
G11	HA304I0065	Oil braid fitting plate	1				
G12	HA100I2020	Screw	2				
G13	H5604G0065	Oil pipe for arm shaft	1				
G14	HA305I0661	Oil return pipe	1				
G15	HA100I2150	Felt pouch	1				
G16	HA300I2060	pipe holder	1				

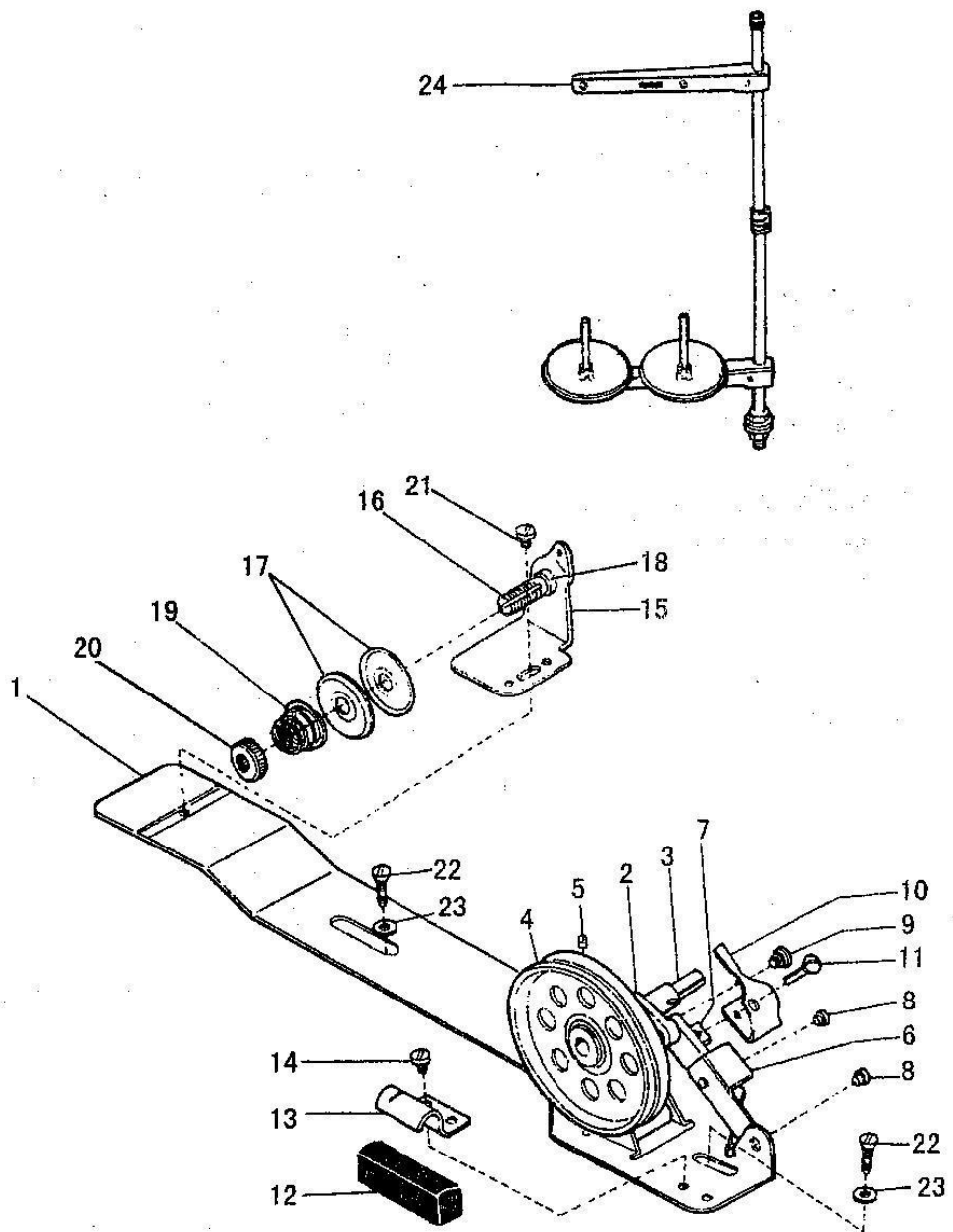
# H. OIL RESERVOIR AND OTHER ACCESSORIES



## H. OIL RESERVOIR AND OTHER ACCESSORIES

Fig. No.	Part No.	Description	H 3 4 0			Remarks
H01	HA304J0651	Oil seservoir	1			
H01	HA604J0651	Oil seservoir				
H02	HA104J0652	Oil drain screw	1			SM5/16(28)×10
H03	HA104J0653	Washer	1			
H04	HA104J0654	Gasket for oil reservoir ( small )	1			
H05	HA104J0655	Gasket for oil reservoir ( big )	1			
H06	HA300J2160	Hinge pin for knee lifter	1			
H07	HA104J0657	Backspring for knee lifter	1			
H08	HA104J0658	Knee lifter stop bracket	1			
H09	HA104J0659	Adjusting screw	2			SM15/64(28)×28
H10	HA104J6510	Lock nut	2			
H11	HA110D0672	Screw	1			SM15/64(28)×14.8
H12	HA106J0661	Knee lifter lifting rod	1			
H13	HA106J0662	Knee lifter bell crank	1			
H14	HA106J0663	Joint for knee lifter bell crank	2			
H15	HA300J2180	Set screw	1			SM5/16(28)×16
H16	HA106J0665	Knee lifter plate	1			
H17	HA106J0666	Bracket for knee lifter plate	1			
H18	HA106J0667	Set screw	1			SM15/64(28)×8
H19	HA106J0668	Pad for knee lifter plate	4			
H20	H801045200	Screw	4			GB/T99 4.5×20
H21	HA300J2230	Washer	1			
H22	H2008O0068	Belt(upper)	6			
H23	HA300B2170	Screw	1			SM11/64(40)×8
H24	H2008O0671	Belt mark complrte	1			
H25	HA300J2250	Screw	2			M4×12.5
H26	HA300J2280	Screw	1			SM15/64(28)×8
H27	H2008O0067	Belt (lower)	1			
H28	HA305J0665	Belt complete	1			

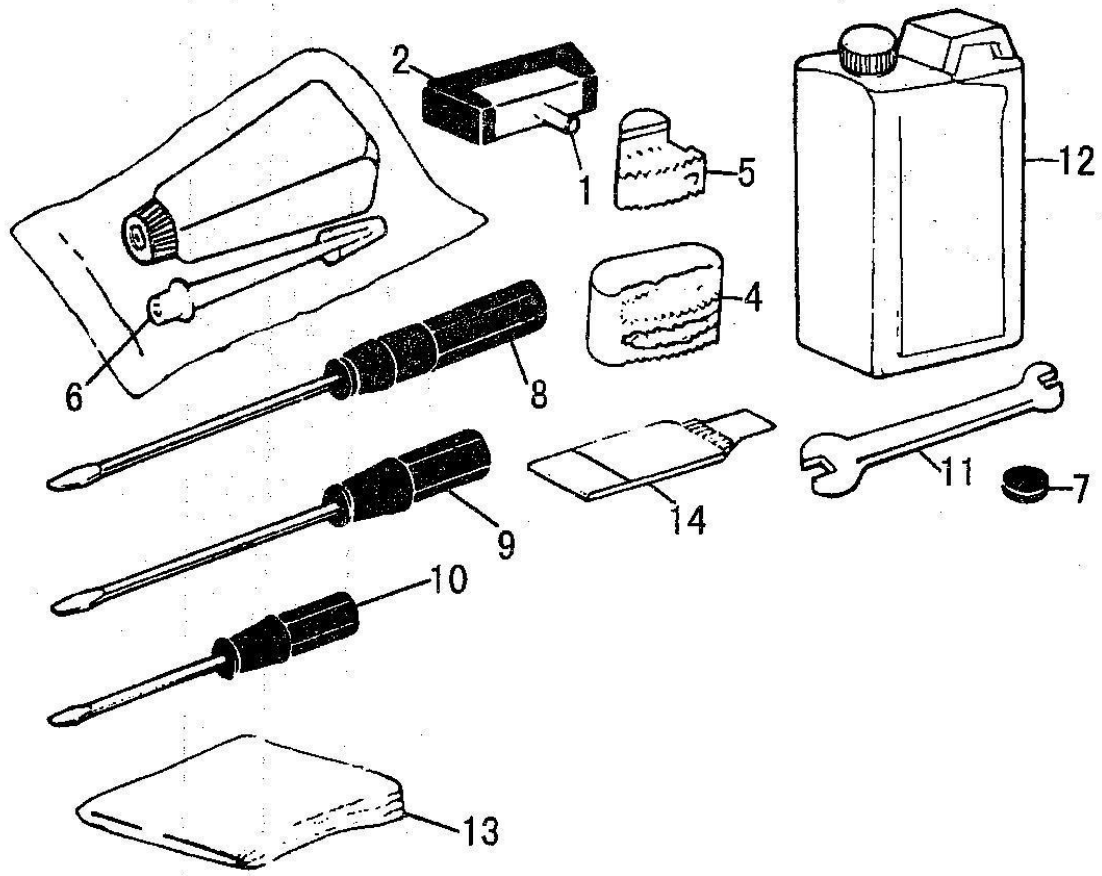
# I. BONNIN WINDER MECHANISM



# I. BONNIN WINDER MECHANISM

Fig. No.	Part No.	Description	H 3 4 0				Remarks
I01	00H2010	Bobbin winder base	1				
I02	00H2030	Shaft for bobbin winder arm	1				
I02	00H2040	Shaft for bobbin winder	1				
I02	00H2050	Spring	1				
I03	HA109J0681	Bobbin winder spindle	1				
I04	07L0651	Bobbin winder pulley	1				
I05		Screw	1				
I06	00H2100	Bobbin winder stop latch lever	1				
I07	00H2110	Bobbin winder connecting bar	1				
I08	00H2120	Rivet	2				
I09	00H2130	Screw	1				
I10	00H2140	Bobbin winder stop latch	1				
I11	00H2140	Adjusting screw	1				
I12	00H2180	Stopper block	1				
I13	00H2150	Fixture for stopper block	1				
I14		Set screw	1				
I15	00H2160	Bobbin winder tension bracket	1				
I16	00H2170	Bobbin winder tension stud	1				
I17		Bobbin winder tension disc	1				
I18	H005004060	Tension stud bushing	2				
I19	HNG300D275	Bobbin winder tension spring	2				
I20		Tension stud nut	1				
I21		Tension bracket screw	1				
I22	H801045200	Wood screw	2				
I23	HA200J2030	Washer	1				
I24	HA200J2030	Thread stand assay	1				

# J. OTHER ACCESSORIES





## J. OTHER ACCESSORIES

Fig. No.	Part No.	Description	H 3 4 0				Remarks
J01	HA110J0701	Hinge of machine head	2				
J02	HA307J0671	Rubber socket for hinge	2				
J04	HA300J2050	Rubber cushion(big)	2				
J05	HA300J2060	Rubber cushion(small)	2				
J06	HA100J2110	Oiler	1				
J07	HA100J2120	Magnet	1				
J08	HA300J2070	Screw driver(long)	1				
J09	HA300J2200	Screw driver(medium)	1				
J10	HA300J2210	Screw driver(short)	1				
J11	HA300J2220	Double-end wrench	1				
J12	HA100J2170	Oil container	1				
J13	HA100J2180	Vinyl cover	1				
J14	H2000G2030	Needle	4				
J14	H3800C2010	Needle					
J14	H2900C2010	Needle					

