



PARTS BOOK

KM-2070 Series

전자제어식 고속 1분침 본봉
지그재그 재봉기

Electronically Controlled
1-Needle Zigzag Lock Stitch
Machine

PME-121211

Information

A. Parts Book 구성

Structure of Part Book

① **A** Arm, Bed & Machine Body Mechanism
팔, 침대 및 의장품 관계

②

③

④ ⑤ ⑥ ⑦ ⑧ ⑨

Ref. No.	Parts No.	Note	Name of Parts	중 명	Q'ty	Assembly No.
A-1	01-12841-03		Arm	팔	1	
A-2	01-10073-06		Bed	침대	1	
A-4	01-02120-00		Face Plate	면판	1	
A-5	01-02044-12M		Face Plate Gasket	면판 가스켓	1	
A-6	01-1174-4122		Screw(L) 1/84*mm2	볼트	10	
A-7	01-11011-123D		Rubber Cap For Face Plate	면판 고무캡	2	
A-9	01-001M-123D		Caution S-Screw	경고 스크류	1	
A-8	01-011973-00		Thermap Layer Cover	보온층 피막	1	
A-10	01-02020-123D		Screw(S) 1/84*mm2	볼트(S) 1/84*mm2	1	
A-11	01-01746-00		Bed Cover(L)	침대 커버(좌)	1	
A-12	01-01441-123M		Bed Cover Gasket(L)	침대 커버 가스켓(좌)	1	
A-13	01-02643-123D		Screw(L) 1/84*mm2	볼트(L) 1/84*mm2	14	
A-13-1	45-024M-1000		Washer	와셔	2	
A-14	01-01750-00		Bed Cover(S)	침대 커버(우)	1	
A-15	01-017M-123M		Bed Cover Gasket(S)	침대 커버 가스켓(우)	1	
A-16	440211-100M		Tank Rubber Cap	수조용 고무캡	1	
A-17	01-027A-123D		Thread Guide with Three Poles	세극용 실선지(3극)	15Set	
A-19	01-0231-123D		Thread Guide(L)	실선지(좌)	1	
A-20	01-0232-123D		Thread Guide(R)	실선지(우)	3	
A-21	01-0300-123D		Thread Guide(S)	실선지(중)	1	
A-22	01-0643-00		Arm Thread Guide Assy	팔 실선지 실선지조	1	
A-23	11-0175-750D		Nut	너트	1	
A-24	01-0231-123M		Thread Guide(L)	실선지(좌)	1	
A-25	010275-100M	H	Siscon Tank Assy	실리콘 탱크 용접조	15Set	
A-26	010206-100M	H	Siscon Tank	실리콘 탱크	1	
A-27	010206-100M	H	Siscon Oil Window	실리콘 유창	1	
A-28	010240-100M	H	Siscon Part	실리콘 부품 용접	1	
A-29	01-1305-00	H	Part for Siscon Oil Supply	실리콘 기름 공급 부품	1	
A-30	01-0164-123D	H	Screw(L) 1/84*mm2	볼트(L)	1	
A-32	04-1241-123D		Arm Upper Part Rubber Cap	팔 상부 고무 캡	2	
A-33	04-0216-123D		Needle Bar Rubber Cap	바늘봉 고무 캡	1	
A-34	01-0431-142L		Rubber Cap(L)	고무캡(좌)	4	
A-35	44-02111-7400		Rubber Cap(S)	고무캡(중)	7	
A-36	01-0175-123D		Bed Rubber	침대 고무	1	
A-37	01-01917-00	H	Welder (Sinker)(M)	인열 스티커-중용	1	
A-38	01-01918-00	M	Welder (Sinker)(S)	인열 스티커-소용	1	
A-39	01-01919-00	L	Welder (Sinker)(L)	인열 스티커-대용	1	
A-40	01-01920-00	K	Welder (Sinker)(K)	인열 스티커-대용	1	
A-41	01-02110-123D		Welder (Sinker)(S)	인열 스티커(중)	2	
A-42	01-02114-123D		Tap Cover	방수캡	1	
A-43	41-101A-123D		Siscon Winder Assy	실선지조	15Set	
A-44	41-10015-100M		Siscon Winder (Spare Assy)	실선지 예비조	1	
A-45	41-200A-123D		Siscon Winder (Shaft)	실선지 구동축	1	
A-46	01-02000-00	S, Other	Sinker(S)	인열 스티커	1	
A-47	01-0102-750D		Screw(S)	볼트(S)	1	
A-48	41-10001-100M		Siscon Winder	실선지 지름지	1	
A-49	01-0104-550T		Screw(L) 1/84*mm2	볼트(L)	2	
A-50	41-10003-100M		Siscon Winder Action Ring	실선지 지름지	1	
A-51	41-10004-100M		Siscon Winder (Shaft) Rubber Ring	실선지 구동축 고무링	1	
A-52	41-10010-100M		Siscon Winder (Shaft)	실선지 구동축	1	
A-53	41-10011-100M		Siscon Winder Adjusting Plate	실선지 조정판	1	
A-54	01-0130-123D		Screw(L) 1/84*mm2	볼트(L)	1	
A-55	01-011M-123D		Washer	와셔	1	
A-56	41-10013-100M		Siscon Winder (Shaft)	실선지 구동축	1	
A-57	41-10014-100M		Siscon Winder Adjusting Term	실선지 조정판	1	
A-58	0101500-4113		Screw(M) 1/84*mm2	볼트(M)	1	

Note: P= Heavy Material(중용), M=Medium Material(중용), M= Pneumatic Heavy Material(공압식 중용)
L= Light Material(대용), K=Kitt Material(커트용), EL=Large Shuble Hole(대 시틀 홀)

①:관계 별 고유 코드

Unique code by mechanism

②:관계 별 고유 명칭

Unique name by mechanism

③:관계도

Explode view

④Ref.No.:파트별 고유 식별 번호

Unique identification number by part

⑤Parts No.:고유 제품 코드

Unique Product code

Ex)

구분 Category	Code	비고 remarks
구 부품 Old part	01-030C-1230	
신 부품 New Part	AS-000000-00	조(組) 파트 Set parts
	GP-000000-00	기구적 파트 Instrumental parts
	EP-000000-00	전기적 파트 Electrical parts

⑥Note:공지사항 표기 및 메모

Refers to notice and memo

⑦품

명:파트의 고유 품명

Name of Part:Unique name of parts

⑧Q'ty :파트의 수량

The number of parts

⑨Assembly no.:조(組) 파트의 식별 번호

Unique identification number by set part

Warning

1. 조에 속한 파트는 개별 조립 시 제품의 파손 또는 재봉 불량 발생될 수 있어 해당 파트에 대한 주문 시에는 조 품목으로만 구입이 가능합니다.
2. 본 책자는 Parts Book으로 제작되었으므로 매뉴얼로 사용 불가합니다.
3. 사전 예고 없이 사양이 변경 될 수도 있습니다.

1. The parts classified as ass'y items may cause damage to the machine or bad sewing when they are separately assembled. Hence, when they are ordered, they can be purchased as ass'y items only.
2. This is a parts book. It cannot be used as a manual.
3. Parts are Subject to change in Design Without Prior Notice.

Note

- 썬스타 제품의 부품은 아래 인터넷주소로 접속하시어 신청할 수 있습니다.
<http://www.sunstarcs.com>
- 가입된 회원께서는 썬스타 포탈 사이트에 로그인후 필요한 부품을 신청할 수 있습니다.
- 부품관리-발주관리-발주등록 항목에서 부품번호와 신청수량을 입력하여 등록하시면 발주가 됩니다.
- 부품번호를 모르시는 경우 파츠북 조회를 클릭하시고 사용하는 기종을 검색하여 선택하시면 해당 기종의 파츠북을 조회할 수 있습니다.
- 파츠북은 관계별로 구분되어 있으며 관계를 알고 있다면 부품 찾기가 용이합니다.

- You can make an order for the parts of Sunstar machine to connect internet address.
<http://www.sunstarcs.com>
- You can request for parts you want after login if you are a registered member.
- In parts Management - Order Management - Order Registration entry, you can place an order by entering the part number and quantity.
- If you don't know the parts number, click the parts book menu bar.
In a download list, you can read parts book by searching model you use.
- This parts book is classified by the mechanism, therefore you can find part easily.

Model

For Foundation Stitch

- KM-2070-L
Electronically Controlled 1-Needle Zigzag Lock Stitch Machine
전자제어식 고속 1본침 지그재그 재봉기
- KM-2070-7L
Electronically Controlled 1-Needle Zigzag Lock Stitch Machine
With an automatic Thread Trimmer
전자제어식 고속 1본침 지그재그 자동 사절 재봉기

For Long Stitch

- KM-2070-M
Electronically Controlled 1-Needle Zigzag Lock Stitch Machine
전자제어식 고속 1본침 지그재그 재봉기
- KM-2070-7M
Electronically Controlled 1-Needle Zigzag Lock Stitch Machine
with an automatic Thread Trimmer
전자제어식 고속 1본침 지그재그 자동 사절 재봉기

CONTENTS

목 차

I. Machine Part 기구 파트

A	Arm, Bed & Machine Body Mechanism 암, 베드 및 외장품 관계	6
B	Upper Shaft Mechanism 상축 관계	8
C	Presser Foot & Knee Lifting Mechanism 누름대 무릎올림 관계	10
D	Feed Mechanism 피이드 관계	12
E	Lower Shaft Mechanism 하축 관계	16
F	Needle Bar Rocking Mechanism 바늘대 요동 관계	18
G	Thread Release & Thread Tension Mechanism 실늦추기 및 실 장력 조절 관계	20
H	Wiper Mechanism 와이퍼 관계	22
I	Thread Trimming Mechanism 사절 관계	24
J	Reverse Button Mechanism 역진 버튼 관계	26
K	Lubrication Mechanism 급유 관계	28
L	Reverse Feed Mechanism 역진 관계	30
M	Auto Presser Lifting Solenoid Mechanism (Option) 자동 무릎올림 관계 (선택사양)	32
N	Accessories Mechanism 액세서리 관계	34
R	Pedal Mechanism 페달 관계	42

II. Control Part 전기 파트

O	Control Box Mechanism 컨트롤 박스 관계	36
P	Operation Unit Mechanism 오퍼레이션 유니트 관계	38

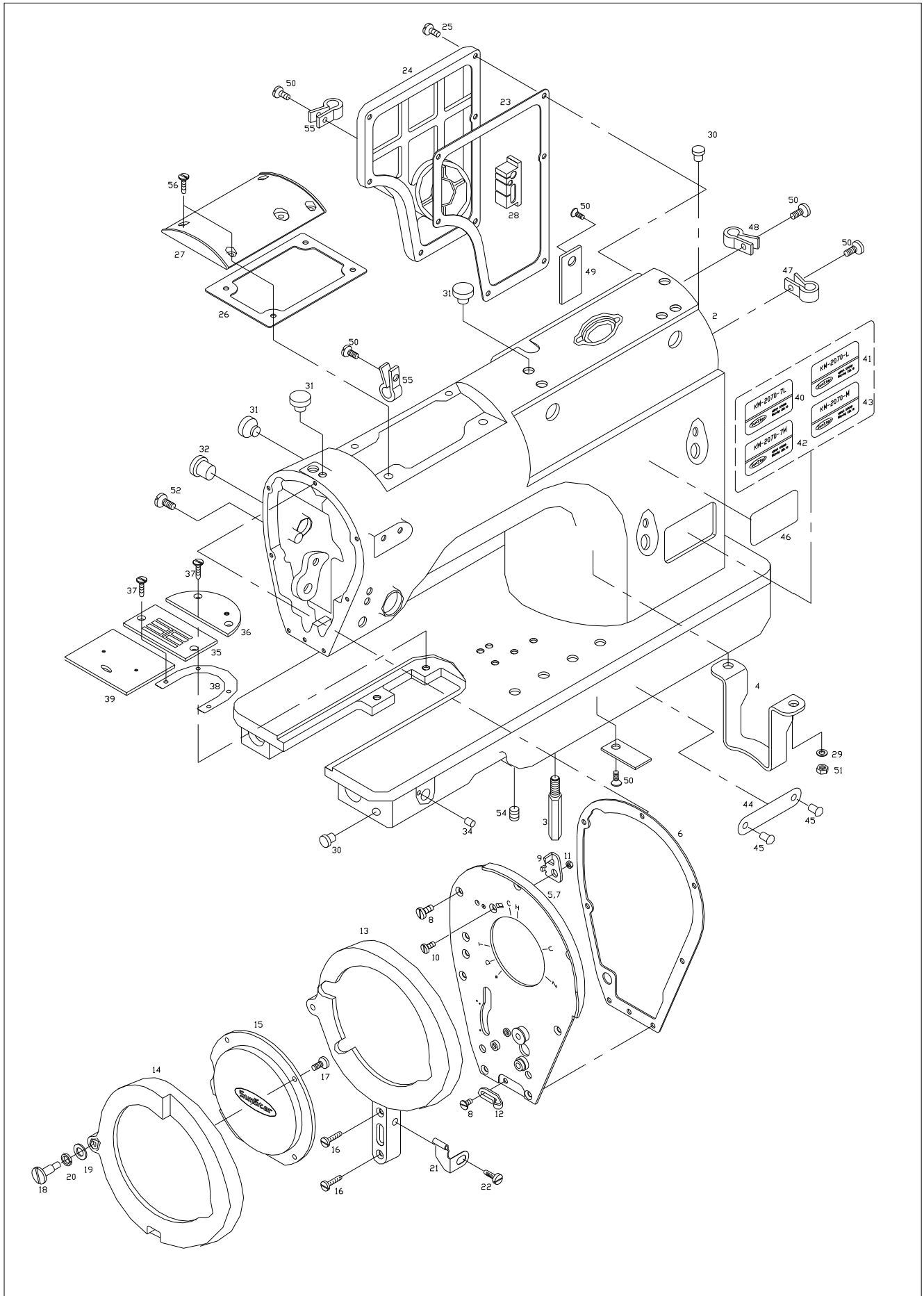
III. Option Part 옵션 파트

Q	Gauge Parts 게이지 관계	40
	Index 인덱스	44

A

Machine Body Mechanism

외장 관계



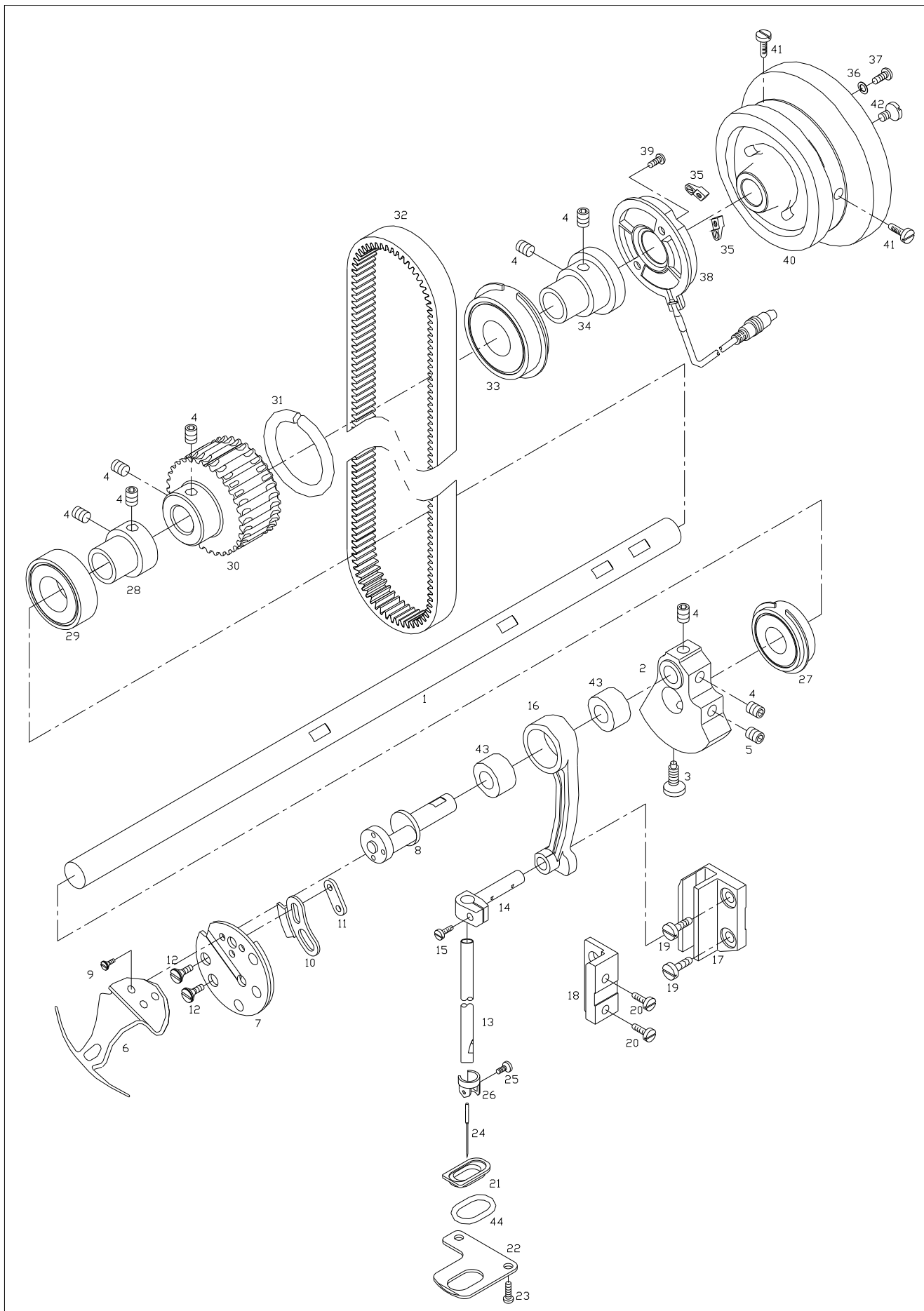


Ref. No.	Parts No.	Note	Name of Parts	품명	Q'ty				Applied Period
					7L	L	7M	M	
A-2	AS-015124-02		Arm·Bed	아암·베드	1Set	1	1	1	Jul.01.11
A-3	DSC-HC000100		Bed Base (F)	베드 다리 (前)	2	2	2	2	
A-4	CMB-BB006100		Bed Base (R)	베드 다리 (後)	1	1	1	1	
A-5	CMB-LB003600		Face Plate	면판	1	·	1	·	
A-6	CMB-FC002101		Face Plate Gasket	면판 가스켓	1	1	1	1	Mar.08.12
A-7	01-007A-2070		Face Plate	면판	·	1	·	1	
A-8	DSC-BB002900		Screw (9/64"n=40, l=8)	집나사	8	8	8	8	
A-9	CMB-NB000200		Face Plate Mes	면판 메스	1	1	1	1	
A-10	DSC-BB002900		Screw (9/64"n=40, l=8)	집나사	1	1	1	1	
A-11	DSN-AA001100		Nut (9/64"n=40)	너트	1	1	1	1	
A-12	CMB-HK000200		Face Plate Thread Guide	면판 실안내	1	1	1	1	
A-13	CMB-LA010900		Face Plate Guard	면판 가드	1	1	1	1	
A-14	CMB-LA011000		Face Plate Guard Cover	면판 가드 커버	1	1	1	1	
A-15	CMB-LA011100		Cover Window	커버창	1	1	1	1	
A-16	DSC-BJ000400		Screw (11/64"n=40)	윗뚜껑 집나사	2	2	2	2	
A-17	DSC-BF000100		Screw (1/8"n=44)	홈 볼이 납작 작은 나사	4	4	4	4	
A-18	DSC-FA012300		Stud Screw for A-14	단나사	1	1	1	1	
A-19	DWS-AA000400		Washer	와셔	1	1	1	1	
A-20	DWS-CC000100		Wave Washer	파형 와셔	4	4	4	4	
A-21	CMB-BJ004000		Face Plate Guard Cover Stopper	면판 가드 커버 스톱퍼	1	1	1	1	
A-22	DSC-BA000900		Screw (9/64" n=40, l=5.5)	면판 측면 커버나사(하)	1	1	1	1	
A-23	CMB-FC002200		Rear Cover Gasket	후면 커버 가스켓	1	1	1	1	
A-24	01-025C-2070		Rear Cover	후면 커버	1	1	1	1	
A-25	DSC-BF001200		Screw (11/64"n=40)	가마잡이 나사	6	6	6	6	
A-26	CMB-FC002000		Top Cover Gasket	윗뚜껑 가스켓	1	1	1	1	
A-27	CMB-LA004000		Top Cover	윗뚜껑	1	1	1	1	
A-28	01-030R-2070		Cable Holder Rubber	케이블 잡이 고무	1	1	1	1	
A-29	PWS-CA000400		Spring Washer	스프링 와셔	2	2	2	2	
A-30	DPK-CB000801		Rubber Cap for Arm Rear Part(S)	ARM후면부 고무마개 (小)	2	2	2	2	Aug.22.11
A-31	DPK-CB000700		Rubber Cap for Arm Upper Part	Arm 상부 고무마개	5	6	5	6	
A-32	DPK-CB000100		Rubber Cap for Arm Rear Part (L)	Arm 후면부 고무마개(大)	1	1	1	1	
A-34	DPK-CA002201		Rubber Cap for Bed (S)	Bed 고무마개 (小)	1	1	1	1	
A-35	CGA-GA001000		Needle Plate(8mm)	침판 (8mm)	1	1	1	1	
A-36	CMB-BJ003900		Auxiliary Plate	보조 침판	1	1	1	1	
A-37	DSC-BC000400		Screw (9/64"n=40, l=7)	면판 측면 커버나사(상)	4	4	4	4	
A-38	CMB-BJ004100		Needle Plate Spacer	침판 Spacer	1	·	1	·	
A-39	01-041A-2070		Slide Plate	미끄럼판	·	1	·	1	
A-40	GP-009241-00		Model Sticker (7L)	모델마크 (7L)	1	·	·	·	
A-41	GP-009246-00		Model Sticker (L)	모델마크 (L)	·	1	·	·	
A-42	GP-009261-00		Model Sticker (7M)	모델마크 (7M)	·	·	1	·	
A-43	GP-009262-00		Model Sticker (M)	모델마크 (M)	·	·	·	1	
A-44	01-035P-1370		Machine Number Plate	기번호판 (베드)	1	1	1	1	
A-45	01-035P-7400		Pin for A-44	기번호판 고정핀	2	2	2	2	
A-46	CMB-LD000200		Caution Sticker	경고 스티커	1	1	1	1	
A-47	PTC-AH000100		Cable Holder (5N)	케이블 잡이 (5N)	1	1	1	1	
A-48	PTC-AH000300		Cable Holder (6N)	케이블 잡이 (6N)	1	1	1	1	
A-49	DSP-AD000800		Plate Spring	판 스프링	1	1	1	1	
A-50	DSC-BJ000200		Screw (11/64"n=40)	틈 카바린지 고정나사(4525)	6	6	6	6	
A-51	PSN-AA000500		Nut(M8×1.25)	베드 받침 너트(4000)	2	2	2	2	
A-52	DSC-BJ003900		Screw (5/16"n=24)	마개나사	1	1	1	1	
A-54	DSC-CA002600		Screw (1/8"n=44)	갈날 조절 나사(4515)	1	1	1	1	
A-55	PTC-AH000500		Cable Holder(3N)	케이블 홀더(3N)	2	2	2	2	
A-56	DSC-BF001000		Slot Head Screw	홈볼이 납작 작은나사(807011)	4	4	4	4	

B

Upper Shaft Mechanism

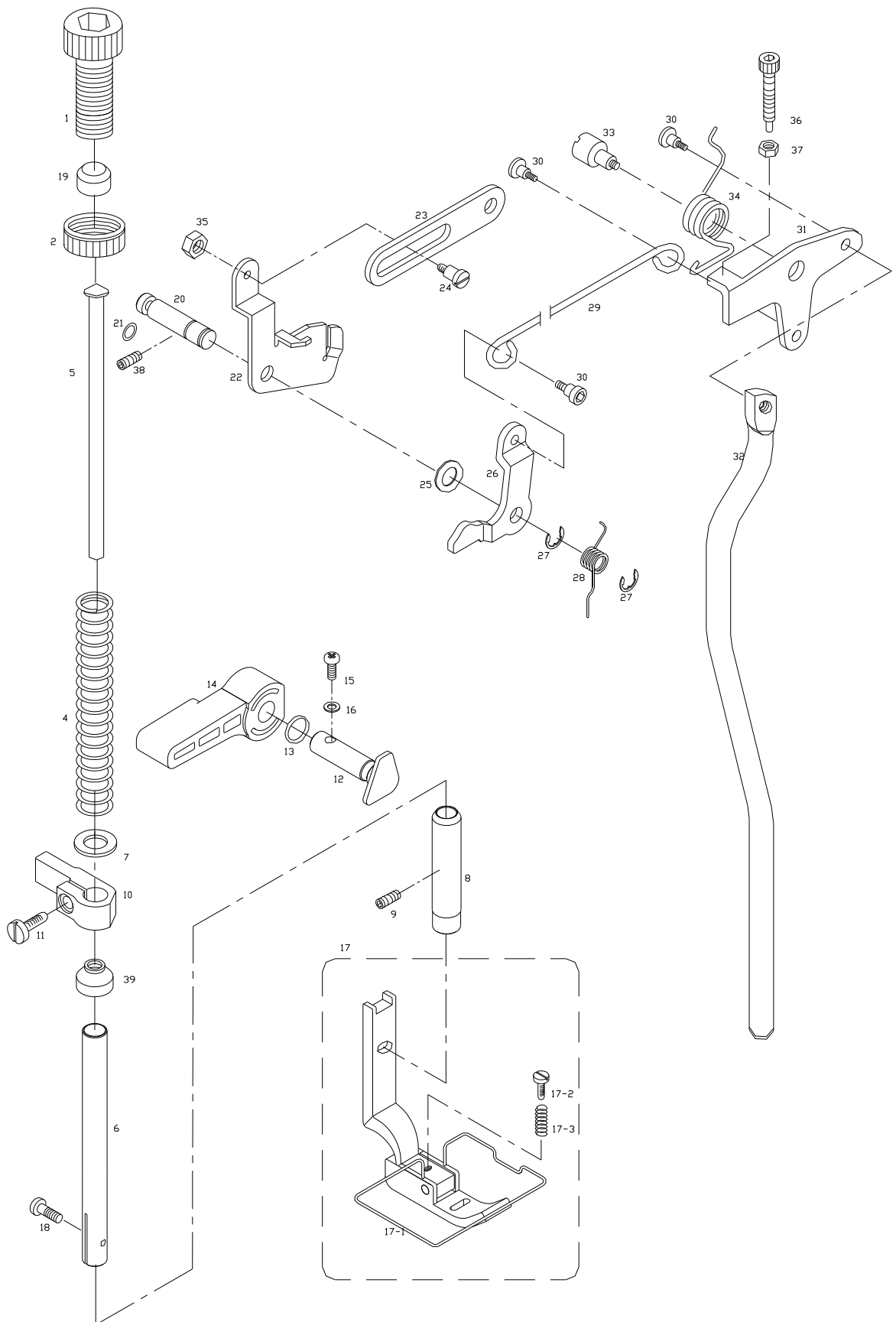
상축 관계



C

Presser Foot & Knee Lifting Mechanism

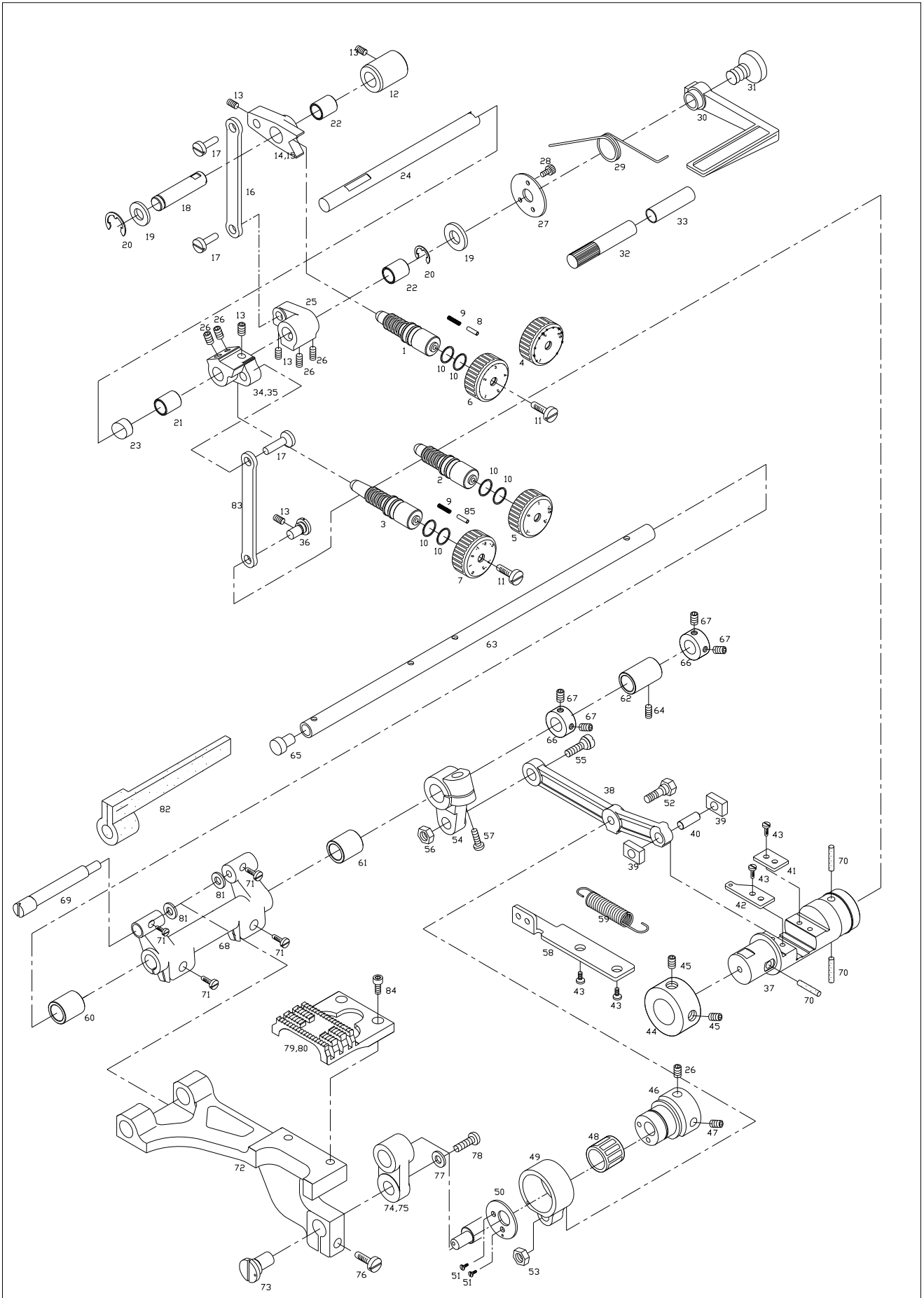
누름대 무릎올림 관계



D

Feed Mechanism

피이드 관계

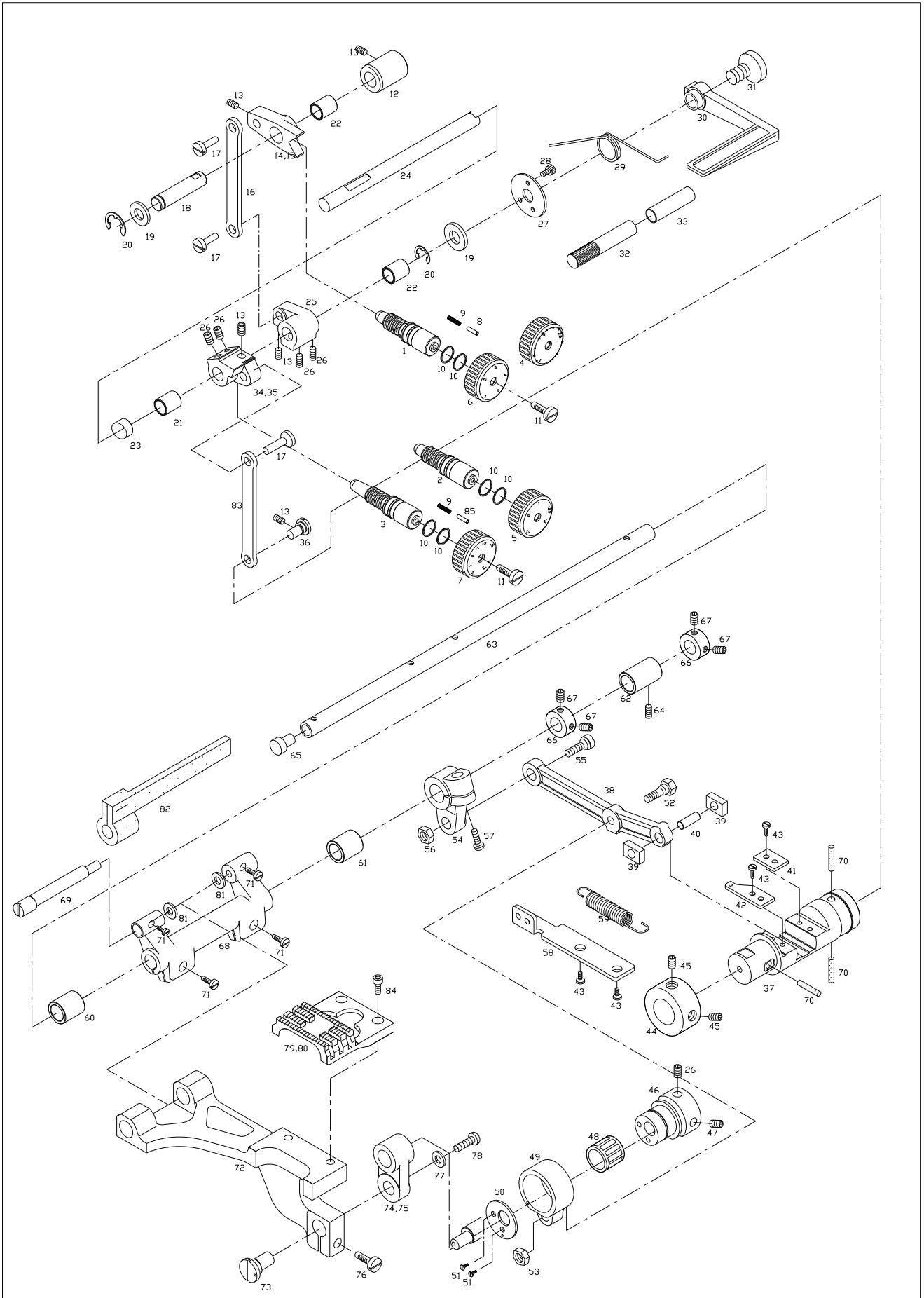


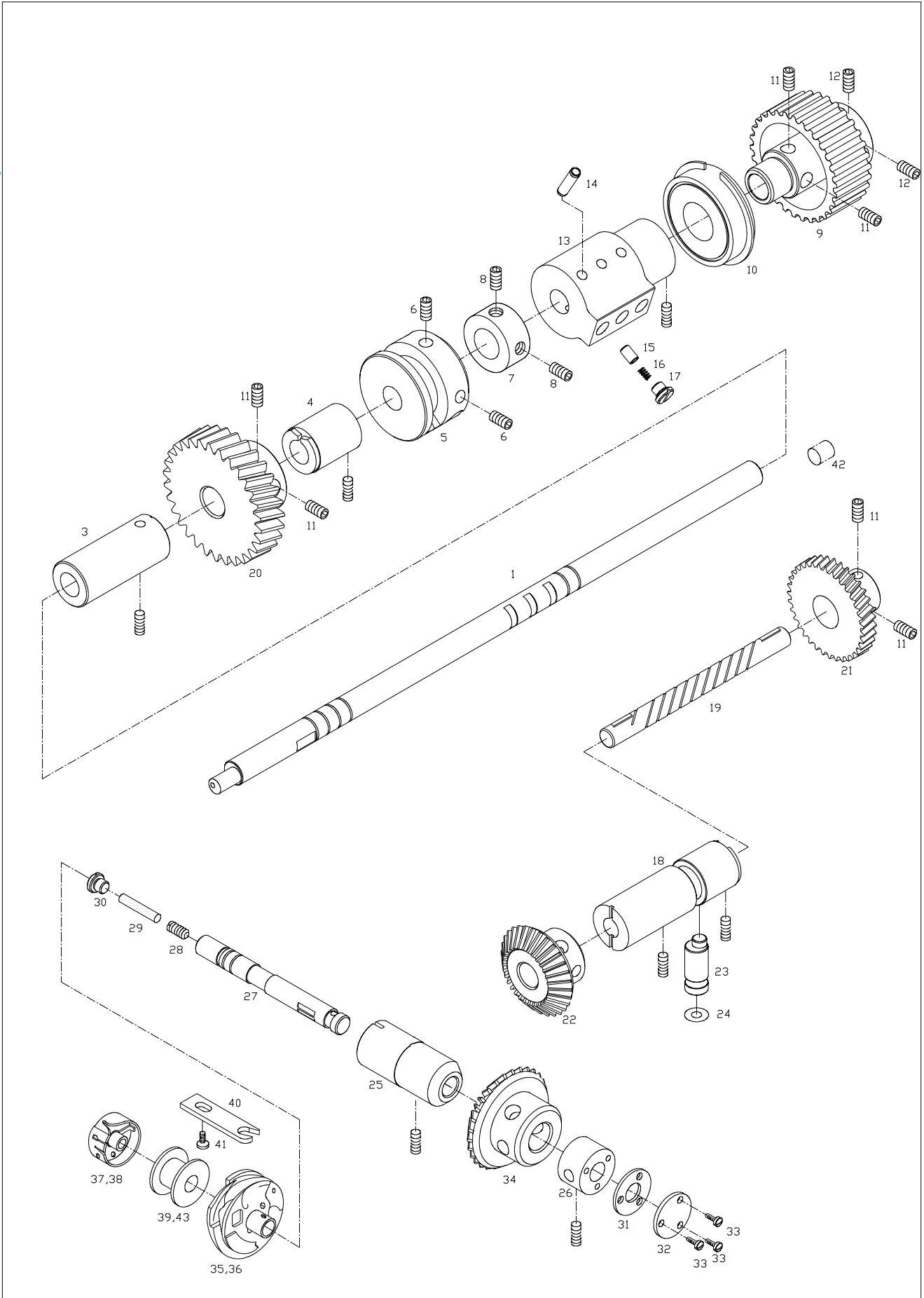
Ref. No.	Parts No.	Note	Name of Parts	품 명	Q'ty				Assembly No.
					7L	L	7M	M	
D-1	CFA-KJ000400		Feed Regulator Dial Shaft	피이드 조절 다이알 축	1	1	1	1	
D-2	CFA-KJ000500		Condense Regulator Dial Shaft (L)	콘덴스 조절 다이알 축 (박물용)	1	1	.	.	
D-3	CFA-KJ000600		Condense Regulator Dial Shaft (M)	콘덴스 조절 다이알 축 (일반용)	.	.	1	1	
D-4	CFA-CQ000400		Feed Regulator Dial (L)	피이드 조절 다이알 (박물용)	1	1	.	.	
D-5	CFA-CQ000500		Condense Regulator Dial (L)	콘덴스 조절 다이알 (박물용)	1	1	.	.	
D-6	06-006A-207M		Feed Regulator Dial (M)	피이드 조절 다이알 (일반용)	.	.	1	1	
D-7	06-007A-207M		Condense Regulator Dial (M)	콘덴스 조절 다이알 (일반용)	.	.	1	1	
D-8	DPN-AA008500		Dial Pin	다이알 문자판 핀	2	2	.	.	
D-9	DSP-AA002800		Dial pin Spring	다이알 핀 스프링	2	2	2	2	
D-10	DPK-BA000500		O-Ring	O-링	4	4	4	4	
D-11	DSC-BF001900		Screw (3/16"n=28, l=12)	다이알핀침나사	2	2	2	2	
D-12	DBS-DA014700		Feed Regulator Shaft Bushing	피이드 조절기 축 붓싱	1	1	1	1	
D-13	DSC-CB000700		Screw (M5, l=5)	캠접촉카라고정나사	5	5	5	5	
D-14	CFA-DF000300		Feed Regulator (L)	피이드 조절기 (박물용)	1	1	.	.	
D-15	06-115A-207M		Feed Regulator (M)	피이드 조절기 (일반용)	.	.	1	1	
D-16	CFA-CC000700		Feed Regulator Rod	피이드 조절기 연결 롯드	1	1	1	1	
D-17	06-118A-2070		Connecting Rod Shaft	연결 롯드 축	3	3	3	3	
D-18	CFA-KC000600		Feed Regulator Shaft	피이드 조절기 축	1	1	1	1	
D-19	DWS-AA005600		Washer	와셔	2	2	2	2	
D-20	PSR-AC000800		E-Ring (φ8)	E-링 (φ8)	2	2	2	2	
D-21	PBS-BA000100		Reverse Lever Shaft Bushing (F)	역진레버 축 전붓싱 (DU 1020)	1	1	1	1	
D-22	PBS-BA000700		Reverse Lever Shaft Bushing (R)	역진레버 축 후붓싱 (DU 1012)	2	2	2	2	
D-23	DPK-CA002300		Reverse Lever Shaft Rubber Cap	역진레버 축 고무마개	1	1	1	1	
D-24	CFA-KC000701		Reverse Lever Shaft	역진레버 축	1	1	1	1	Mar.07.12
D-25	CFA-CM000900		Feed Adjusting Lever	피이드 조절레버	1	1	1	1	
D-26	DSC-CB000400		Screw (1/4"n=40, l=6)	침나사	5	5	5	5	
D-27	CFA-BJ000700		Cover for Reverse Lever Shaft	역진레버 축 커버	1	1	1	1	
D-28	PSC-AC001500		Screw (M4×P0.7, l=8)	고정메스고정나사	3	3	3	3	
D-29	DSP-AC004800		Reverse Lever Return Spring	역진레버 리턴 스프링	1	1	1	1	
D-30	CFA-CM000800		Reverse Feed Lever	역진레버	1	1	1	1	
D-31	DSC-BJ002400		Screw (3/16"n=32, l=10)	레바댁개나사	1	1	1	1	
D-32	CFA-KZ000100		Reverse Lever Stopper	역진레버 스토퍼	1	1	1	1	
D-33	CFA-FZ000200		Rubber for D-32	역진레버 스토퍼 고무	1	1	1	1	
D-34	CFA-CB000200		Condense Regulator (L)	콘덴스 조절기 (박물용)	1	1	.	.	
D-35	06-139A-207M		Condense Regulator (M)	콘덴스 조절기 (일반용)	.	.	1	1	
D-36	CLF-CH000500		Eccentric Pin for Feed Regulator Shaft	질환기 편심핀	1	1	1	1	
D-37	CLF-KK000100		Feed Regulator Shaft	질환기	1	1	1	1	
D-38	CLF-CC000300		Feed Regulator Shaft Connecting Rod	질환기 연결롯드	1	1	1	1	
D-39	CLF-CD000900		Slider Block	슬라이더	2	2	2	2	
D-40	DPN-AA008200		Slider Shaft	슬라이더 축	1	1	1	1	
D-41	CLF-BJ000600		Guide Plate (A)	가이드 판(A)	1	1	1	1	
D-42	CLF-BJ000700		Guide Plate (B)	가이드 판(B)	1	1	1	1	
D-43	DSC-BJ000200		Screw (11/64"n=40, l=8)	톱카바힌지고정나사	6	6	6	6	
D-44	DCL-AA005400		Collar for D-37	질환기 고정 카라	1	1	1	1	
D-45	DSC-CB000500		Screw (15/64"n=28, l=7.5)	캠접촉안내고정나사	2	2	2	2	
D-46	06-153A-2070		Feed Cam	피이드 캠	1	1	1	1	
D-47	DSC-CB001800		Screw (1/4"n=40, l=8.5)	침나사	1	1	1	1	
D-48	PBR-BA001300		Feed Cam Bearing	피이드 캠 베어링 (FWF-222817)	1	1	1	1	
D-49	06-157A-2070		Feed Cam Connecting Rod	피이드 캠 연결 롯드	1	1	1	1	
D-50	CLF-BJ000800		Cover for D-48	피이드 캠 베어링 커버	1	1	1	1	
D-51	DSC-BB002000		Screw (9/64"n=40)	침나사	2	2	2	2	
D-52	DSC-FB001400		Stud Screw for D-38	단나사	1	1	1	1	
D-53	DSN-AA000400		Nut (15/64"n=28)	수평운동롯드단나사너트	1	1	1	1	
D-54	CLF-CB001300		Feed Rock Crank	피이드 요동 크랭크	1	1	1	1	
D-55	DSC-FA012400		Stud Screw for D-54	단나사	1	1	1	1	
D-56	DSN-AA002200		Nut (9/32"n=28)	피이드조절기 연결 단나사 너트	1	1	1	1	

D

Feed Mechanism

피이드 관계

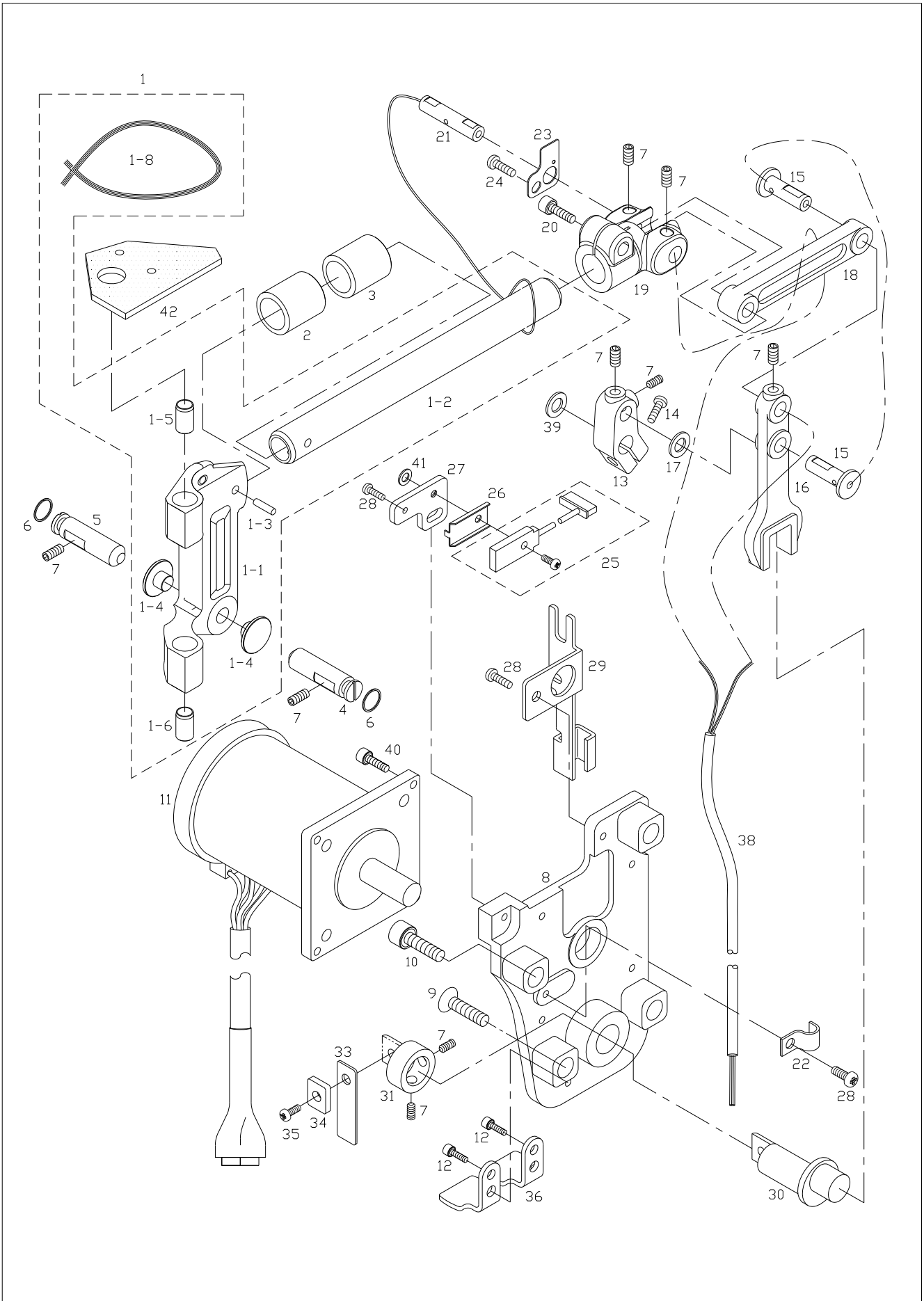


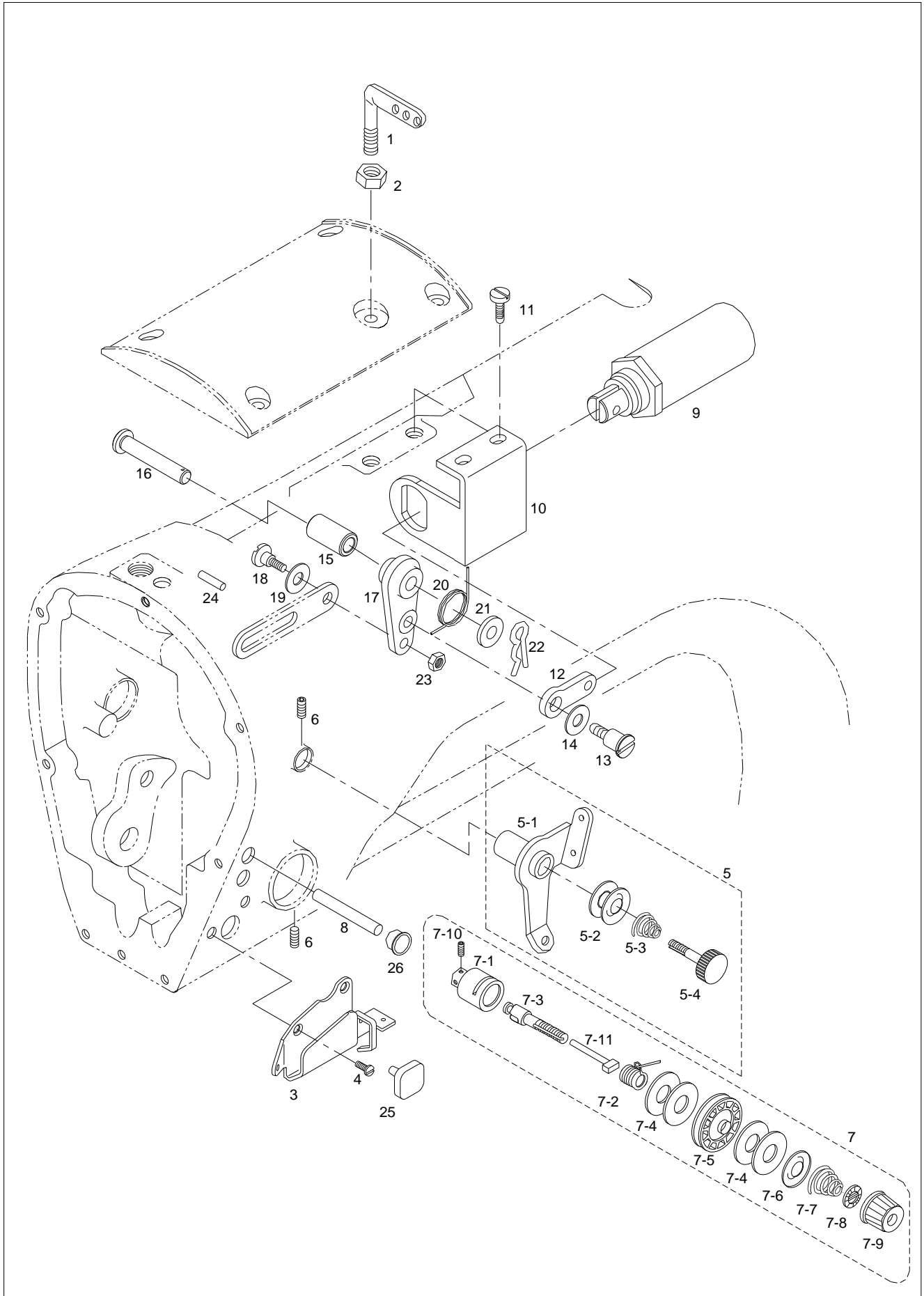


F

Needle Bar Rocking Mechanism

바늘대 요동 관계

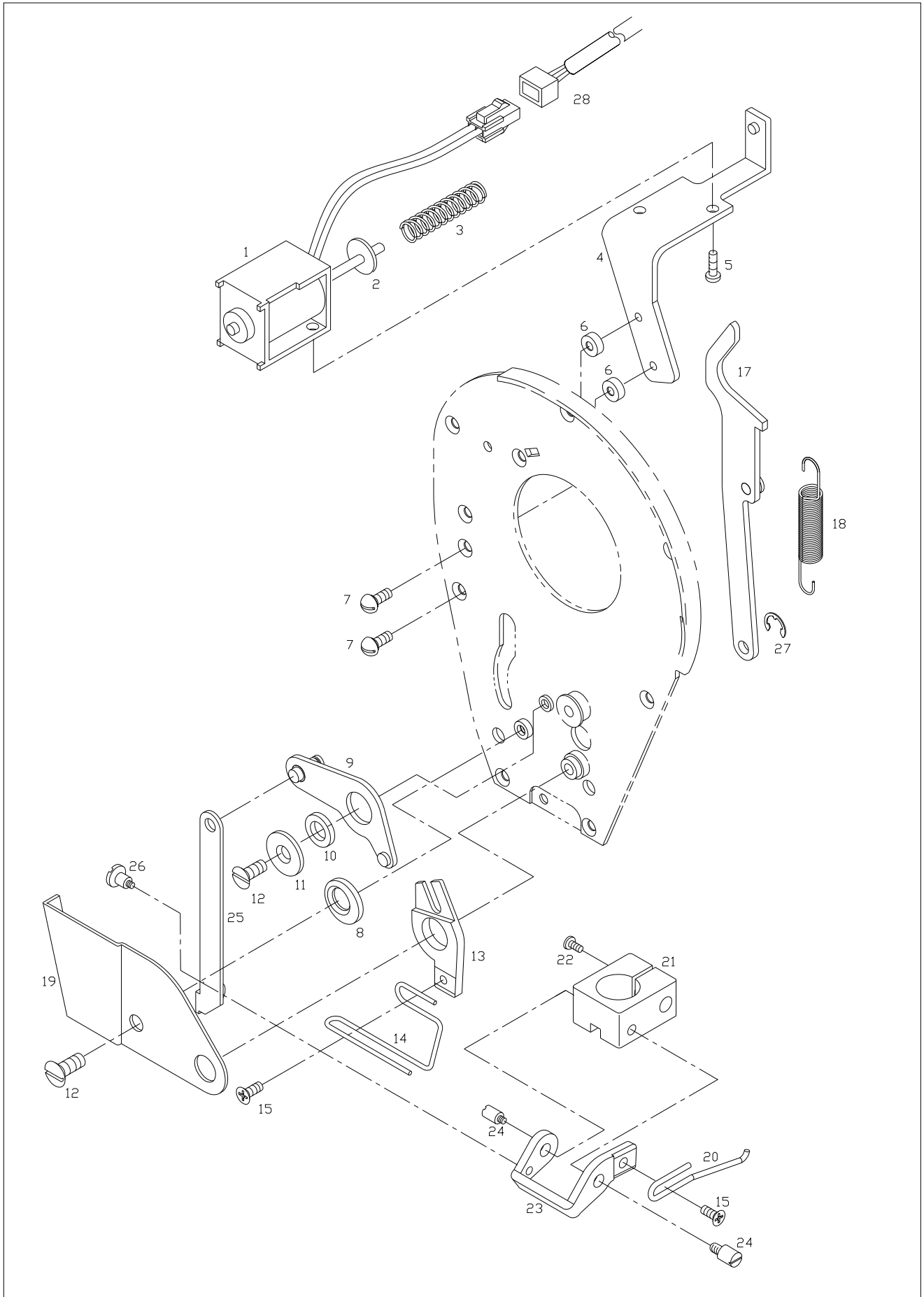






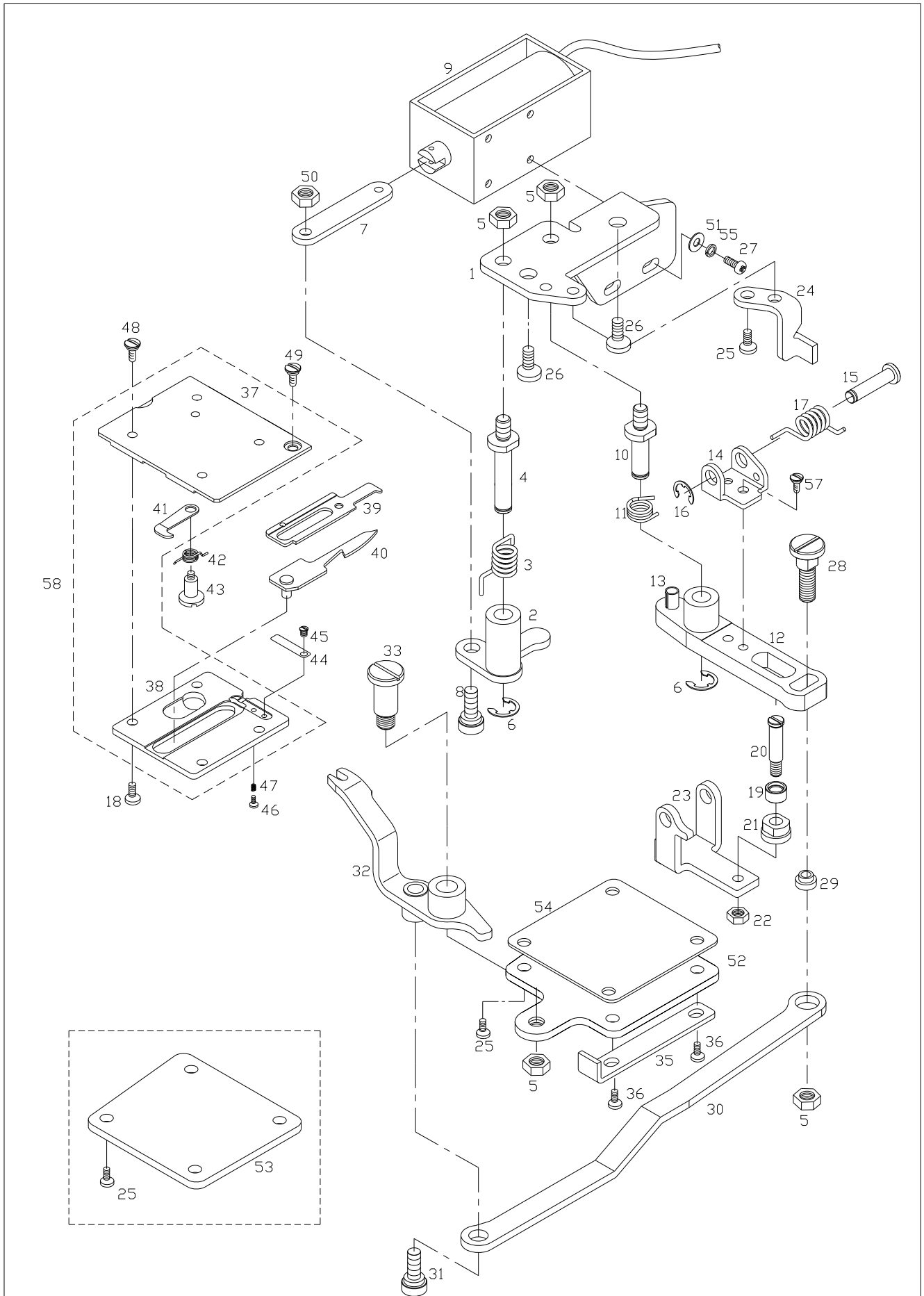
Wiper Mechanism

와이퍼 관계



Thread Trimming Mechanism

사절 관계



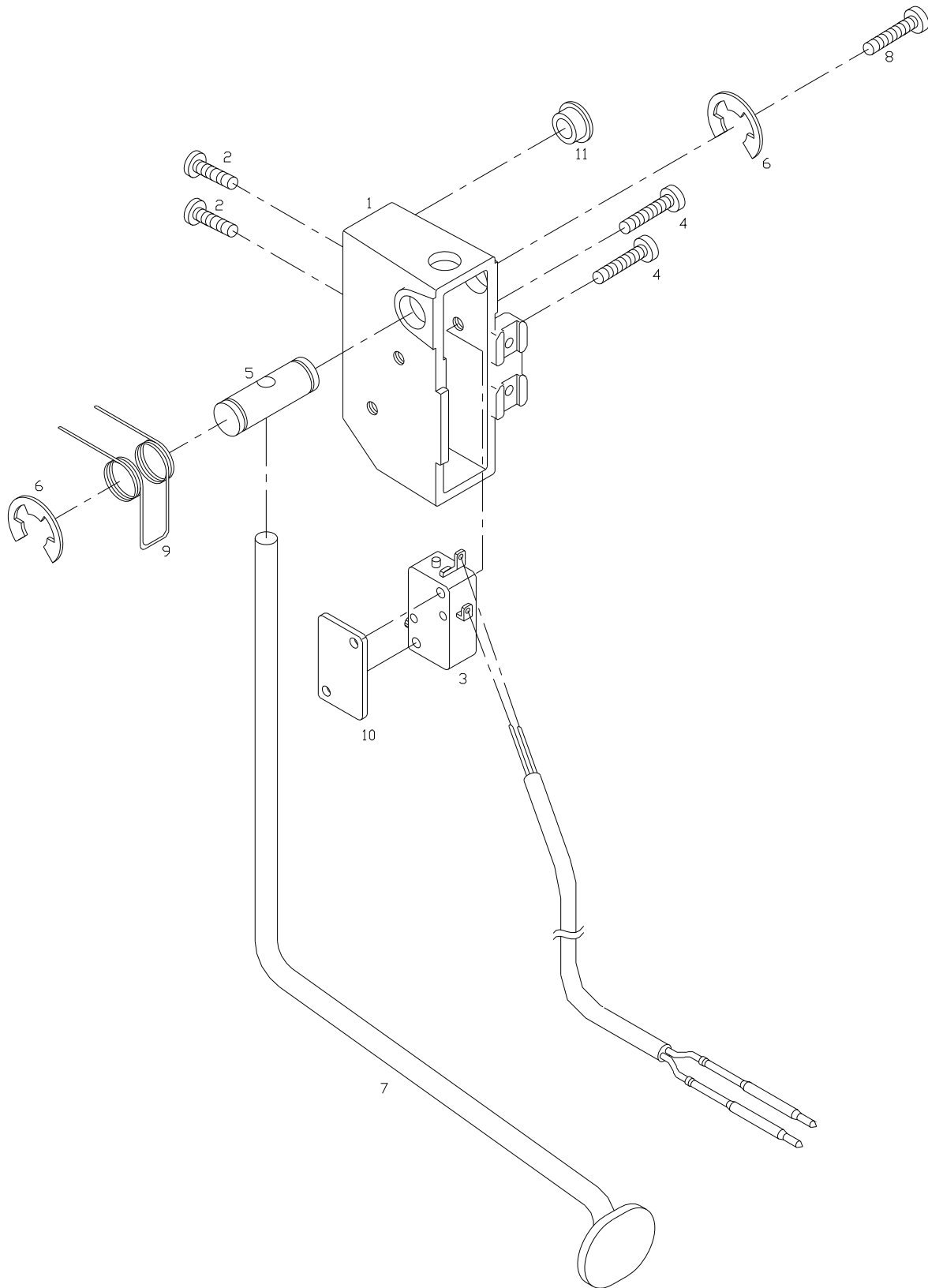


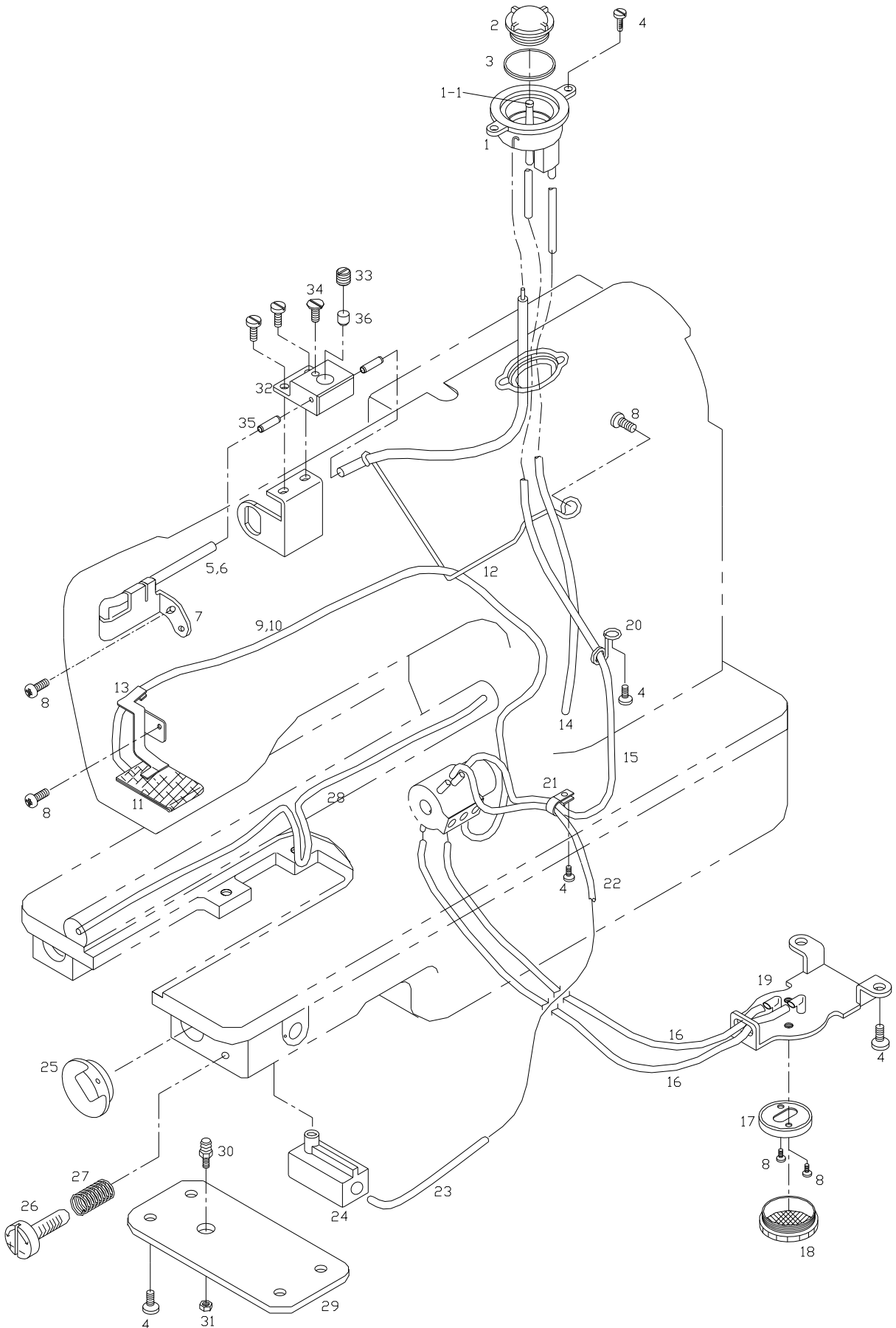
Ref. No.	Parts No.	Note	Name of Parts	품명	Q'ty				Applied Period
					7L	L	7M	M	
I-1	CTT-BA000800		Thread Trimming Base	사철 베이스	1	.	1	.	
I-2	CTT-CM001700		Thread Trimming Clutch Plate	사철 클러치 판	1	.	1	.	
I-3	DSP-AC000700		Return Spring for I-2	사철 클러치 판 리턴 스프링	1	.	1	.	
I-4	DSC-FG000900		Shaft for I-2	사철 클러치 판 축	1	.	1	.	
I-5	DSN-AA000400		Nut (15/64"n=28)	수평운동 롯데 단나사 너트	4	.	4	.	
I-6	PSR-AC000500		E-Ring (φ6)	E-링 (φ6)	2	.	2	.	
I-7	CTT-CA000900		Thread Trimming Solenoid Connecting Link	사철 솔레노이드 연결링크	1	.	1	.	
I-8	DSC-FB000800		Thread Trimming Stud Screw "A"	사철 클러치 판 단나사"A"	1	.	1	.	
I-9	10-044A-2070		Thread Trimming Solenoid Ass'y	사철 솔레노이드 (組)	1組	.	1組	.	
I-10	DSC-FG001000		Shaft for I-12	사철 작동레버 축	1	.	1	.	
I-11	DSP-AC000800		Thread Trimming Driving Lever Return Spring	사철 작동레버 리턴 스프링	1	.	1	.	
I-12	CTT-CM001601		Thread Trimming Driving Lever	사철 작동레버	1	.	1	.	Feb.09.10
I-13	PPN-AF000500		Spring Pin (φ5, ℓ=14)	스프링 핀	1	.	1	.	
I-14	CTT-BB002200		Thread Trimming Roller Arm Bracket	사철 로울러 암 브라켓	1	.	1	.	
I-15	DPN-AD006900		Roller Arm Bracket Shaft	로울러 암 브라켓 축	1	.	1	.	
I-16	PSR-AC000300		E-Ring (φ4)	E-링 (φ4)	1	.	1	.	
I-17	DSP-AC000900		Roller Return Spring	로울러 리턴 스프링	1	.	1	.	
I-18	DSC-BJ001400		Screw (9/64"n=40, ℓ=6)	윗뚜껑 고정판 고정나사(대)	4	.	4	.	
I-19	CTT-CL000600		Thread Trimming Cam Roller	사철캠 로울러	1	.	1	.	
I-20	DSC-FA004900		Stud Screw for I-19	사철캠 로울러 단나사	1	.	1	.	
I-21	CTT-BN000401		Thread Trimming Cam Roller Base	사철캠 로울러 베이스	1	.	1	.	Feb.09.10
I-22	DSN-AA000600		Nut (3/16"n=32)	오프너 너트	1	.	1	.	
I-23	CTT-BB001901		Thread Trimming Roller Arm	사철 로울러 암	1	.	1	.	Feb.09.10
I-24	CTT-BJ003600		Stopper for I-12	사철 작동 레버 스토퍼	1	.	1	.	
I-25	DSC-BJ000200		Screw (11/64"n=40, ℓ=6.5)	홈카바한지 고정나사	4	6	4	6	
I-26	DSC-BF000700		Screw (15/64"n=28, ℓ=14)	베이스 고정나사(B)	2	.	2	.	
I-27	PSC-BA000100		Screw (M3×P0.5, ℓ=8)	솔레노이드부착 고정나사	4	.	4	.	
I-28	DSC-FA013200		Adjusting Screw	조정 나사	1	.	1	.	
I-29	CTT-BN000300		Screw (3/16"n=32, ℓ=6)	동메스 연결롯데 베이스	1	.	1	.	
I-30	CTT-CC001101		Moving Mes Connecting Rod	동메스 연결롯데	1	.	1	.	Jul.29.11
I-31	DSC-FA005000		Stud Screw for I-30	단나사	1	.	1	.	
I-32	CTT-CB001300		Thread Trimming Drive Crank	사철 작동 크랭크	1	.	1	.	
I-33	DSC-FA004400		Stud Screw for I-32	사철 작동 크랭크 단나사	1	.	1	.	
I-35	10-039C-2077		Stopper for I-32	사철 작동 크랭크 스토퍼	1	.	1	.	
I-36	DSC-BF003100		Screw (11/64"n=40, ℓ=11)	가마잡이 나사	2	.	2	.	
I-37	CTT-BB001800		Mes Bracket	메스 브라켓	1	.	1	.	
I-38	CTT-BF000900		Knife Holder	메스잡이	1	.	1	.	
I-39	CTT-NB001000		Fixed Mes	고정메스	1	.	1	.	
I-40	CTT-NA000500		Moving Mes	동메스	1	.	1	.	
I-41	CTT-BJ003500		Fixed Mes Clutch	고정메스 클러치	1	.	1	.	
I-42	DSP-AC001000		Fixed Mes Clutch Spring	고정메스 클러치 스프링	1	.	1	.	
I-43	DSC-FA013100		Stud Screw for I-41	단나사	1	.	1	.	
I-44	CTT-BJ003400		Lower Thread Holder	밀실잡이	1	.	1	.	
I-45	DSC-BJ002200		Screw (3/32"n=56, ℓ=2.2)	바늘대 실안내 줌나사	1	.	1	.	
I-46	DSC-BF002800		Screw (3/32"n=56, ℓ=4.8)	바늘대 실걸이 줌나사	1	.	1	.	
I-47	DSP-AA005800		Adjusting Spring for I-44	밀실잡이 조절 스프링	1	.	1	.	
I-48	DSC-BF001400		Screw (9/64"n=40)	고정나사	1	.	1	.	
I-49	DSC-BJ004200		Screw (9/64"n=40 ℓ=6)	고정나사	1	.	1	.	
I-50	DSN-AA000900		Nut (11/64"n=40)	스프링걸이 축 단나사 너트	1	.	1	.	
I-51	PWS-AA000500		Washer	와셔	4	.	4	.	
I-52	07-050C-2077		Hook Shaft Gear Cover	훅 축 기어 커버 (사철용)	1	.	1	.	
I-53	07-051C-2070		Hook Shaft Gear Cover	훅 축 기어 커버 (비사철용)	.	1	.	1	
I-54	CLS-FC000200		Hook Shaft Gear Cover Gasket	훅 축 기어 커버 가스켓	1	1	1	1	
I-55	PWS-CA000100		Spring Washer	스프링 와셔	4	.	4	.	
I-57	DSC-BA001700		Plus Minus Round Head Screw	홈볼이 냄비작은 나사	4	.	4	.	
I-58	AS-007504-00		Mes Bracket Ass'y	메스 브라켓 (組)	1組	.	1組	.	

J

Reverse Button Mechanism

역진 버튼 관계

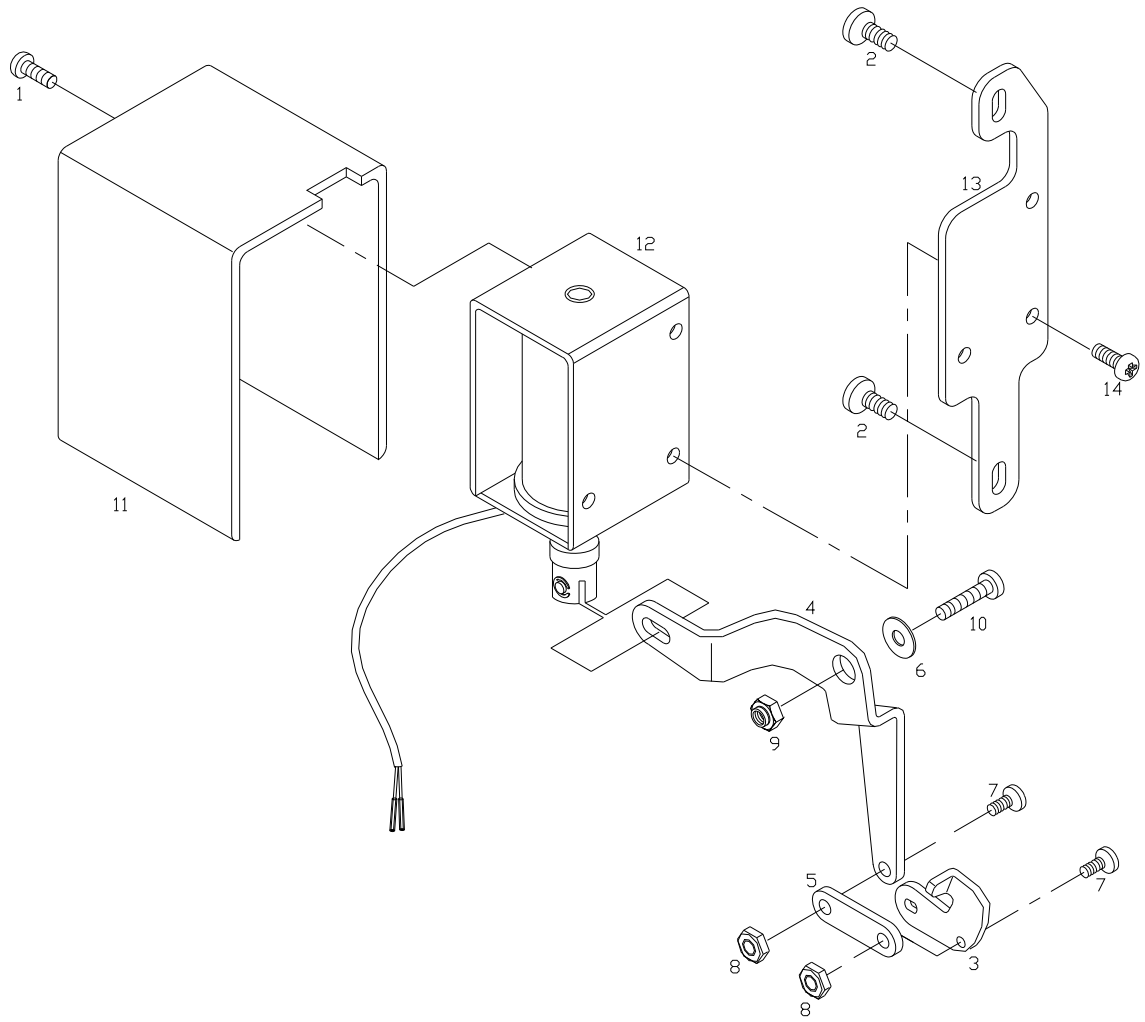


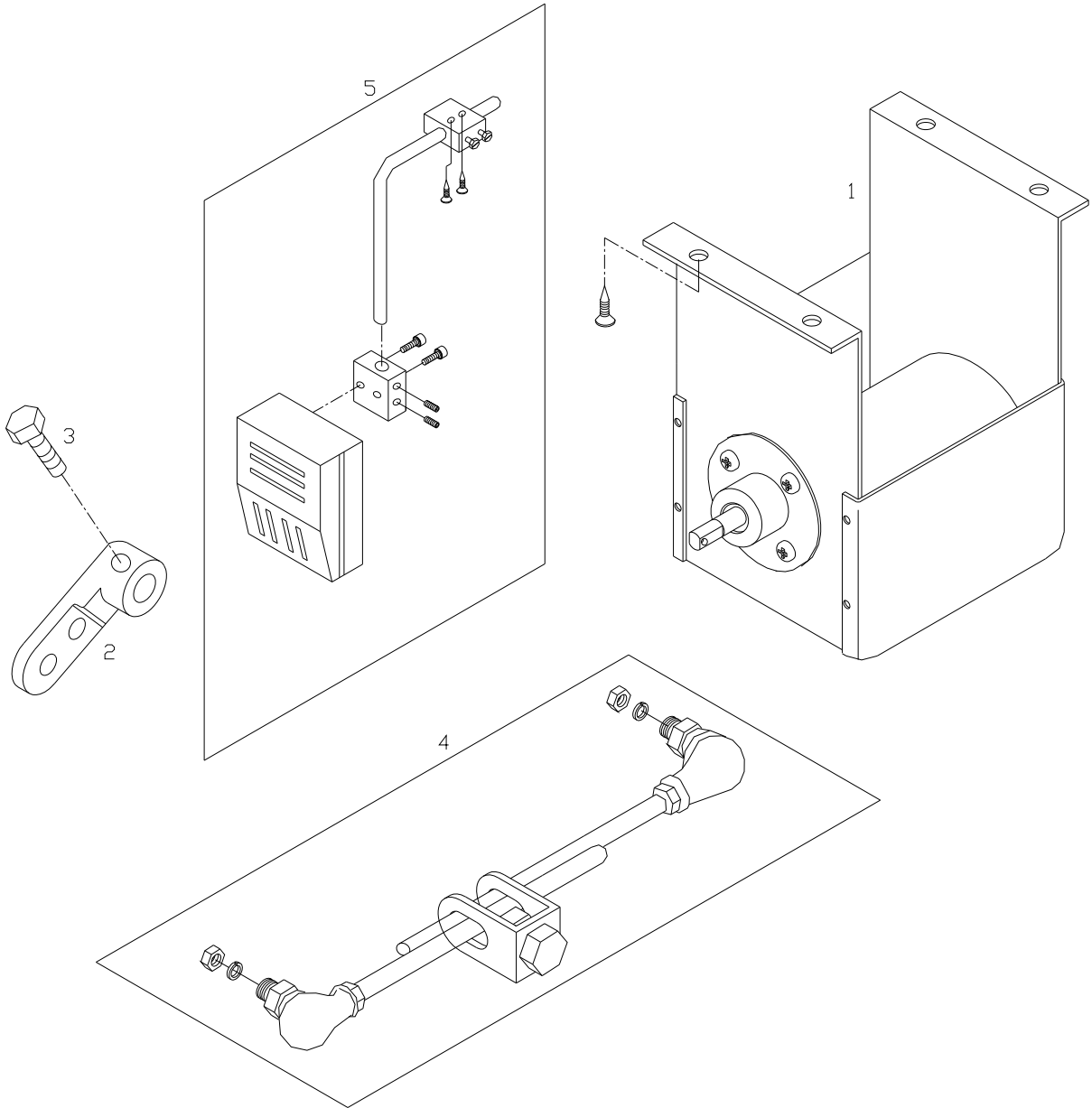


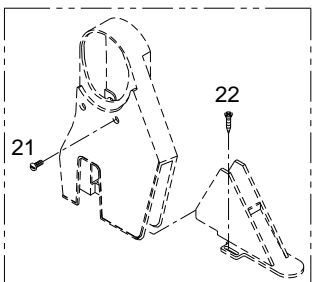
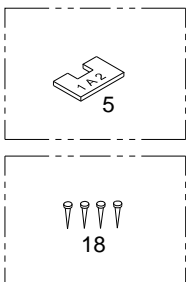
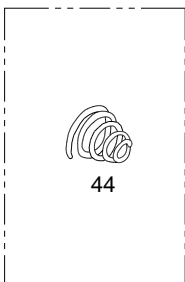
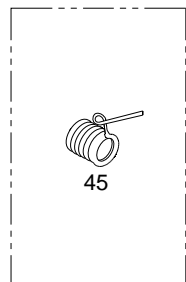
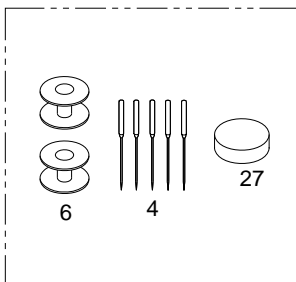
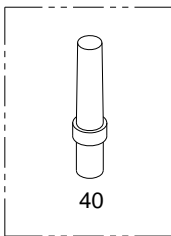
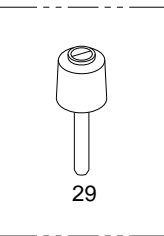
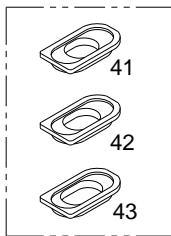
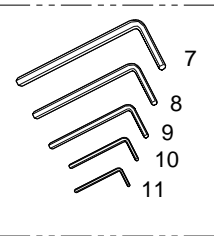
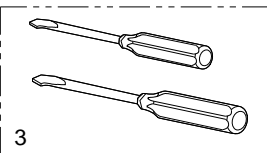
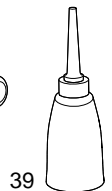
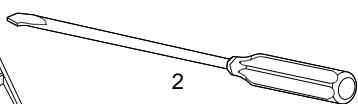
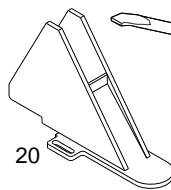
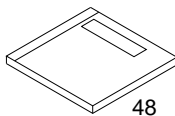
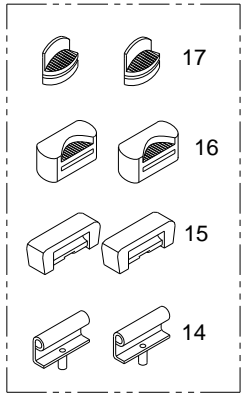
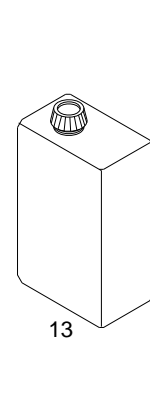
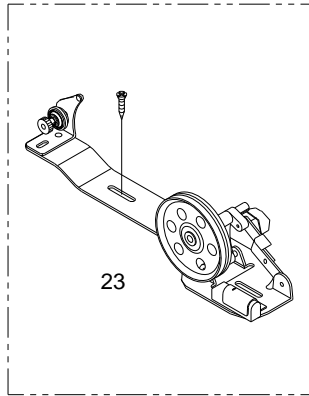
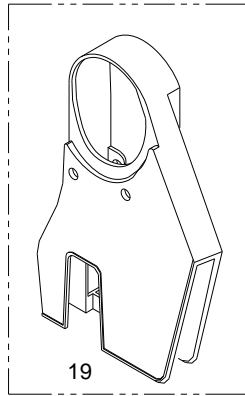
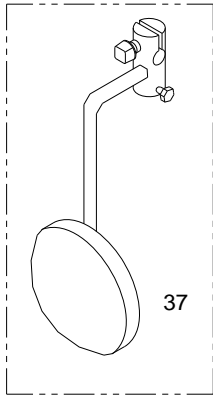
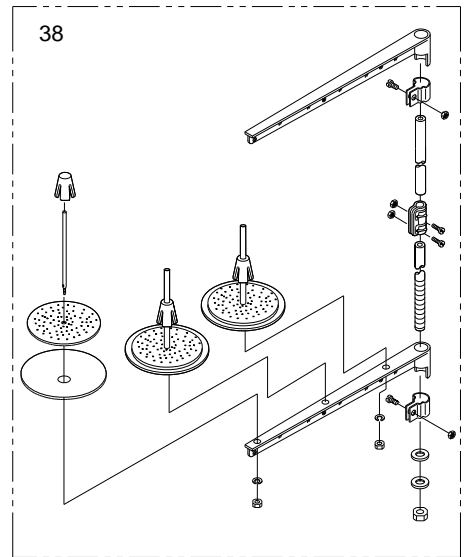
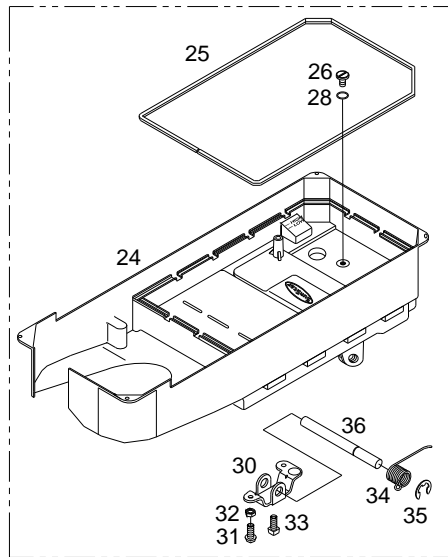
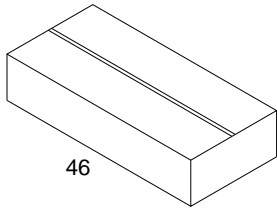


Reverse Feed Mechanism

역진 관계



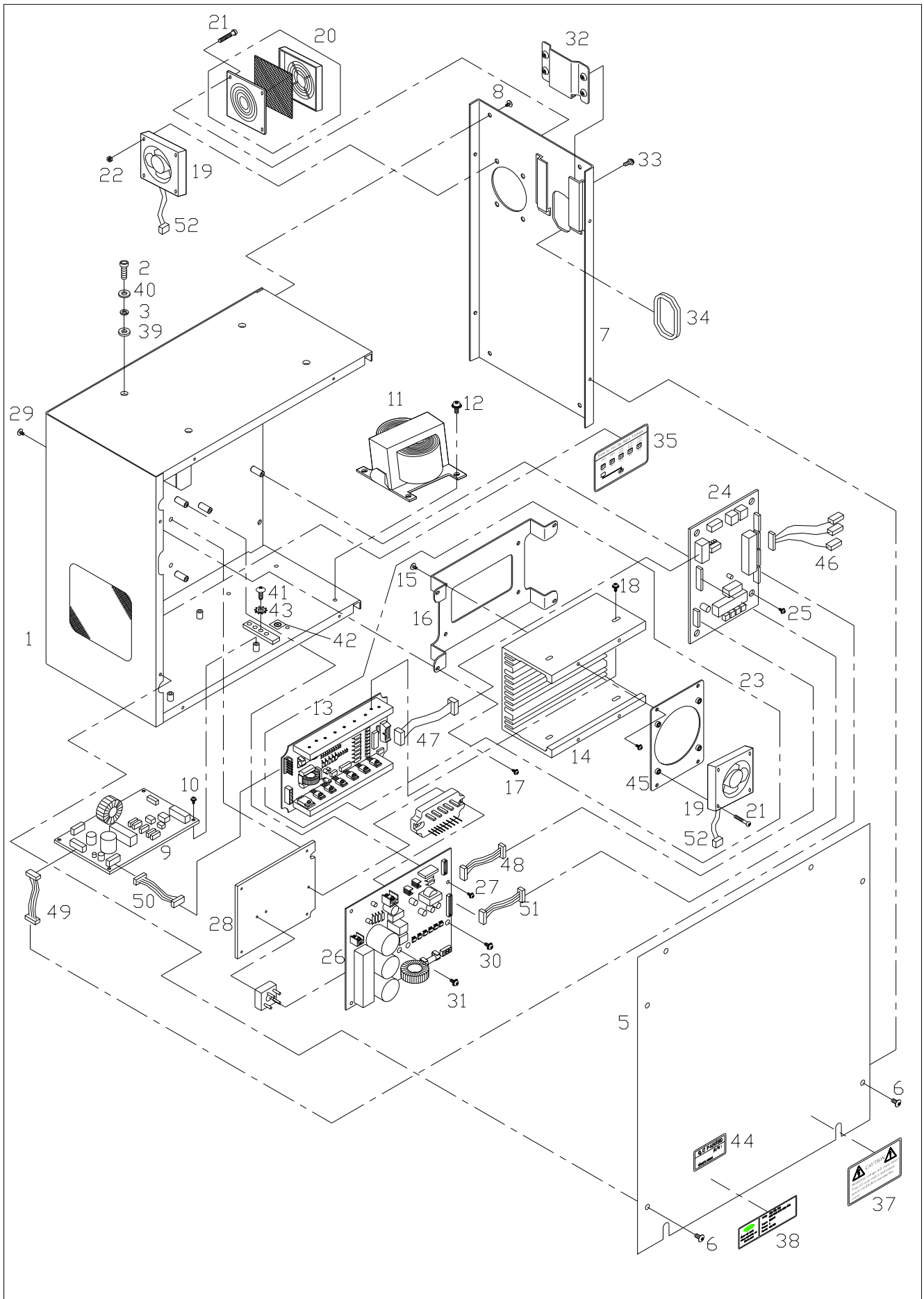




O

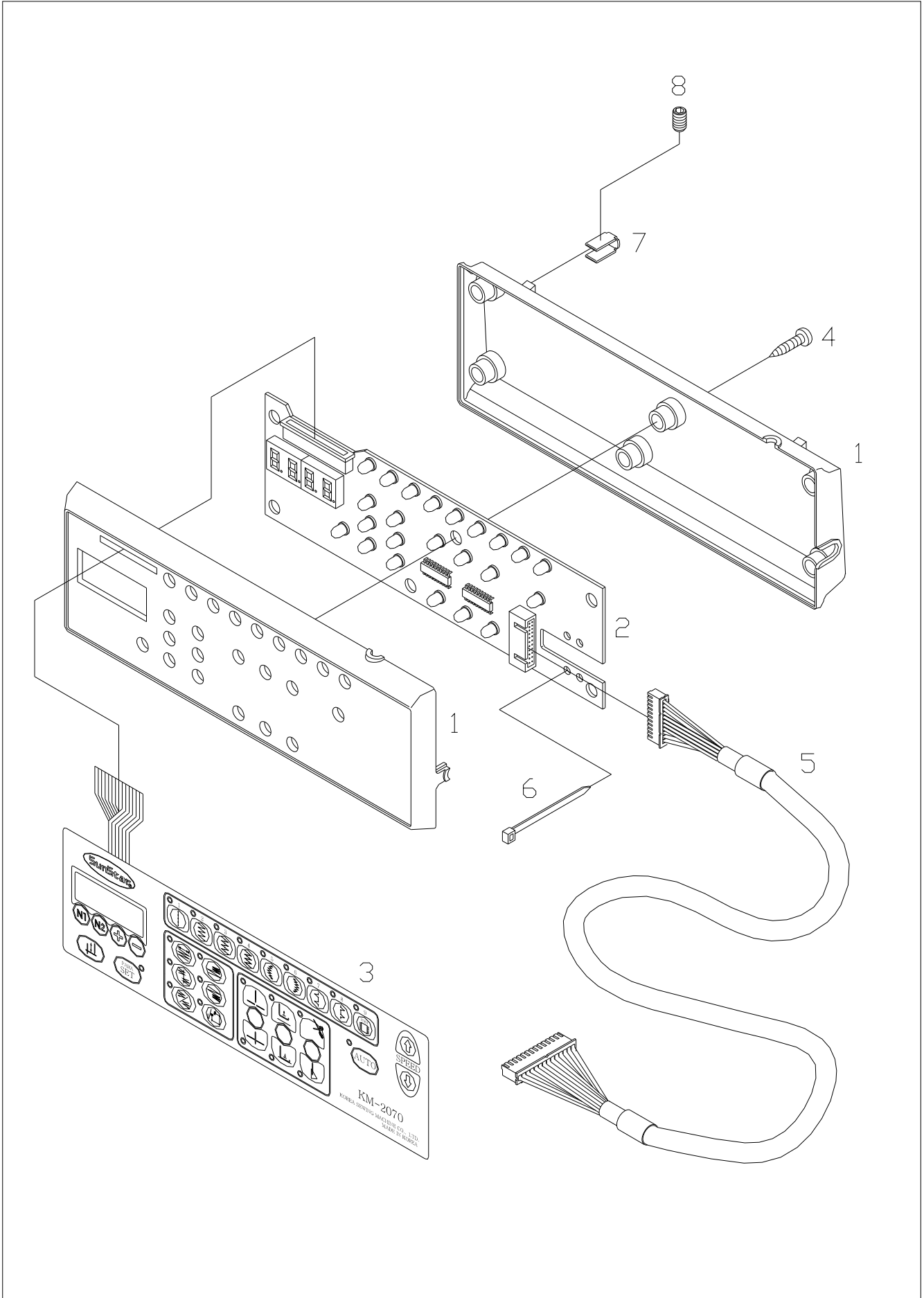
Control Box Mechanism

컨트롤 박스 관계





Ref. No.	Parts No.	Note	Name of Parts	품명	Q'ty				Applied Period
					7L	L	7M	M	
O-1	GP-022749-01		Control Box	콘트롤 박스	1	1	1	1	Feb.02.10
O-2	01-001M-PT02		Screw for Control Box (M6×L45)	콘트롤 박스 쪼мна사	4	4	4	4	
O-3	10-003S-SW66		Spring Washer for Control Box (φ6)	콘트롤 박스 스프링 와셔	4	4	4	4	
O-5	GP-022754-00		Front Cover	전면 커버	1	1	1	1	
O-6	10-003M-PT01		Screw for Front Cover (M4×L6)	전면 커버 쪼мна사	8	8	8	8	
O-7	GP-022753-00		Side Cover	측면 커버	1	1	1	1	
O-8	10-003M-PT01		Screw for Side Cover (M4×L6)	측면 커버 쪼мна사	6	6	6	6	
O-9	BD-000675-03		Power P.C.B (110V,220V)	파워 보드(110V,220V)	1	1	1	1	Mar.08.11
	BD-000675-02		Power P.C.B (110V,220V)	파워 보드(110V,220V)	1	1	1	1	Nov.09.10
O-10	10-002S-SW66		Screw for Power Board (M3×L7)	파워 보드 쪼мна사	4	4	4	4	
O-11	01-004A-2070		Transformer (110V)	트랜스 포머(110V)	1	1	1	1	
	GP-022757-00		Transformer (220V)	트랜스 포머(220V)	1	1	1	1	
O-12	07-025S-3701		Screw for Trancsformer (M5×L12)	트랜스 포머 쪼мна사	4	4	4	4	
O-13	BD-000685-05		Step Driver Board	스텝 드라이브 보드	1	1	1	1	Nov.01.10
	BD-000685-04		Step Driver Board	스텝 드라이브 보드	1	1	1	1	Apr.09.10
O-14	05-002A-9000		Heat Sink X-Y Drive	X, Y 드라이브 방열판	1	1	1	1	
O-15	SC-000683-00		Screw for Heat Sink X-Y Drive (M4×L12)	X, Y 드라이브 방열판 쪼мна사	4	4	4	4	
O-16	05-003A-XY10		Bracket for Heat Sink X-Y Drive	X, Y 드라이브 방열판 브라켓	1	1	1	1	
O-17	SC-000683-00		Screw for Bracket (M4×L12)	브라켓 쪼мна사	4	4	4	4	
O-18	10-006M-SW66		Screw for P.C.B Bracket (M4×L12)	P.C.B 브라켓 쪼мна사	4	4	4	4	
O-19	01-005A-BT01		Fan	팬	2	2	2	2	
O-20	GP-017378-00		Fan Cover	팬 커버	1	1	1	1	
O-21	01-002M-AU12		Screw for Fan (M4×L35)	팬 쪼мна사	6	6	6	6	
O-22	09-041S-3701		Nut for Fan (M4)	팬 쪼믈너트	2	2	2	2	
O-23	04-0000-2070		Step Drive (Ass'y)	스텝 드라이브 (組)	1	1	1	1	
O-24	BD-000236-06		Digital Board	디지털 보드	1	1	1	1	Nov.22.11
	BD-000236-05		Digital Board	디지털 보드	1	1	1	1	Aug.27.11
O-25	10-002S-SW66		Screw for Digital Board (M3×L7)	디지털 보드 쪼мна사	4	4	4	4	
O-26	03-0000-BR00		Main Motor Drive	주축 구동 드라이브 보드	1	1	1	1	
O-27	10-002S-SW66		Screw for Main Motor Drive (M3×L7)	주축 구동 드라이브 쪼мна사	4	4	4	4	
O-28	01-005A-BH30		Heat Sink Main Motor Drive	주축 구동 드라이브 방열판	1	1	1	1	
O-29	01-003M-PT01		Screw for Heat Sink Main Motor Drive (M4×L16)	주축 구동 드라이브 방열판 쪼мна사	4	4	4	4	
O-30	SC-000683-00		Screw for IPM (M4×L16)	IPM 쪼мна사	1	1	1	1	
O-31	01-003S-2070		Screw for Bridge Diode (M4×L8)	브릿지 다이오드 쪼мна사	1	1	1	1	
O-32	01-007A-BT01		Connector Cover	컨넥터 커버	1	1	1	1	
O-33	01-004S-2070		Screw for Connector Cover (M4×L6)	컨넥터 커버 쪼мна사	2	2	2	2	
O-34	01-001R-BT10		Ending Bushing	엔딩 부싱	1	1	1	1	
O-35	01-001S-2070		Sticker for Voltage Setting	전압 설정 스티커	1	1	1	1	
O-37	GP-011049-00		Caution Sticker	경고 스티커	1	1	1	1	
O-38	01-001S-2070		Model Sticker	모델 스티커	1	1	1	1	
O-39	91-001C-BT10		Urethan Washer	우레탄 와셔	4	4	4	4	
O-40	91-001C-PT10		Table Washer	테이블 와셔	4	4	4	4	
O-41	01-037S-2070		Screw	나사	1	1	1	1	
O-42	09-012S-CE53		Earth Sticker	어스 스티커	1	1	1	1	
O-43	09-044W-3701		Washer	링터미널 고정 이불이 와셔(M5)	1	1	1	1	
O-44	04-023C-SC53		QC Sticker	QC 스티커	1	1	1	1	
O-45	06-001A-XY01		Fan Fix Bracket	팬 고정브라켓	1	1	1	1	
O-46	01-002B-2070		Switch Input Cable	스위치 입력 케이블(ZZ-022)	1	1	1	1	
O-47	02-008B-BT01		Step Motor Driving Cable	스텝모터 구동케이블(BT-014)	1	1	1	1	
O-48	02-010B-BT01		Servo Signar Cable	서보전류 제어신호케이블(BT-016)	1	1	1	1	
O-49	02-011B-BT01		Solenoid Power Cable	솔레노이드 전원 케이블(BT-018)	1	1	1	1	
O-50	01-009B-2070		Step Motor Power Cable	스텝모터 전원 케이블	1	1	1	1	
O-51	CA-003385-00		Servo Motor Driving Cable	서보모터 구동 케이블	1	1	1	1	
O-52	CA-003786-00		Fan Cable	냉각팬 케이블(ZZ-021)	1	1	1	1	



Q

Gauge Parts

게이지 관계

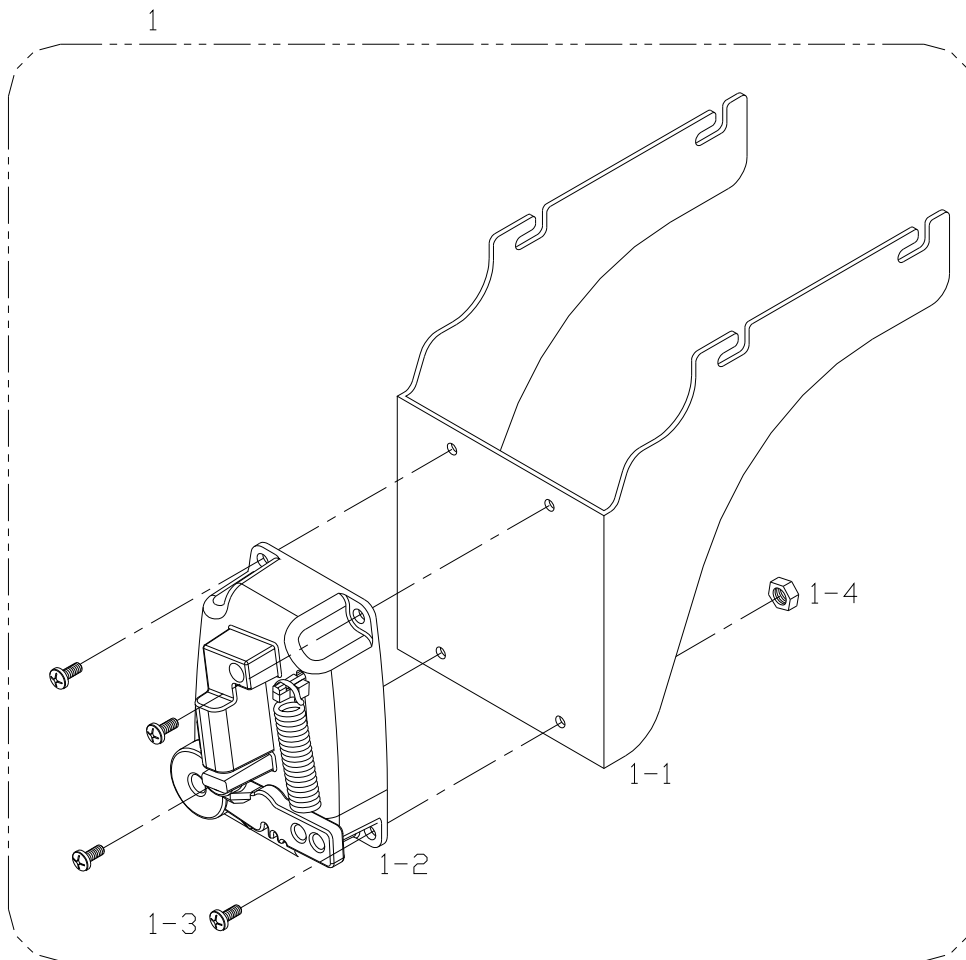
Zigzag Width (진폭)	Part Name (품명)			
	Needle Plate (침판)	Feed Dog (톱니)	Presser Foot (노루발)	Stopper (스토퍼)
10mm	<p>01-137A-2070</p>	<p>06-188A-207L Max. Stitch (최대진폭) : 2.5mm</p> <p>06-189A-207M Max. Stitch (최대진폭) : 5mm</p>	<p>05-117A-2070</p>	<p>04-009C-2070</p>
8mm	<p>01-037A-2070</p> <p>01-437A-2070</p>	<p>06-389A-207L Max. Stitch (최대진폭) : 2mm</p> <p>06-088A-207L Max. Stitch (최대진폭) : 2.5mm</p> <p>06-089A-207M Max. Stitch (최대진폭) : 5mm</p>	<p>05-017A-2070</p> <p>05-317A-2070</p> <p>05-817A-2070</p> <p>05-517A-2070</p>	<p>04-010C-2070</p>
5mm	<p>01-537A-2070</p>	<p>06-089A-207M Max. Stitch (최대진폭) : 5mm</p>	<p>05-617A-2070</p>	<p>04-011C-2070</p>

Zigzag Width (진폭)	Part Name (품명)			
	Needle Plate (침판)	Feed Dog (톱니)	Presser Foot (노루발)	Stopper (스토퍼)
5mm	<p>01-637A-2070</p> <p>01-237A-207L</p>	<p>06-488A-207L Max. Stitch (최대밈폭) : 2.5mm</p> <p>06-288A-207L Max. Stitch (최대밈폭) : 5mm</p>	<p>05-217A-2070</p>	
	<p>01-337A-207M</p>	<p>06-588A-207L Max. Stitch (최대밈폭) : 2.5mm</p> <p>06-289A-207M Max. Stitch (최대밈폭) : 5mm</p>	<p>05-917A-2070</p>	<p>04-011C-2070</p>
	<p>01-737A-2070</p>	<p>06-688A-207L Max. Stitch (최대밈폭) : 2.5mm</p> <p>06-389A-207M Max. Stitch (최대밈폭) : 5mm</p>	<p>05-717A-2070</p>	
3mm	—	—	—	<p>04-012C-2070</p>

R

Pedal Mechanism

페달 관계



Index

Parts No.	Name of Parts	Page	Ref.No.	Parts No.	Name of Parts	Page	Ref.No.	Parts No.	Name of Parts	Page	Ref.No.
01-001M-PT02	Screw (M6×L45)	37	O-2	09-044W-3701	Washer	37	O-43	CFA-CB0002	Condense Regulator (L)	13	D-34
01-001R-BT10	Ending Bushing	37	O-34	10-0000-SF55	Pedal Unit Ass'y	43	R-1-2	CFA-CC0007	Feed Regulator Rod	13	D-16
01-001S-2070	Sticker for Voltage Setting	37	O-35	10-002S-SW66	Screw (M3×L7)	37	O-10	CFA-CM0008	Reverse Feed Lever	13	D-30
01-001S-2070	Model Sticker	37	O-38	10-002S-SW66	Screw (M3×L7)	37	O-25	CFA-CM0009	Feed Adjusting Lever	13	D-25
01-002B-2070	Switch Input Cable	37	O-46	10-002S-SW66	Screw (M3×L7)	37	O-27	CFA-CQ0004	Feed Regulator Dial (L)	13	D-4
01-002M-AU12	Screw for Fan (M4×L35)	37	O-21	10-003M-PT01	Screw (M4×L6)	37	O-6	CFA-CQ0005	Condense Regulator Dial (L)	13	D-5
01-003C-1230	Nail	35	N-18	10-003M-PT01	Screw (M4×L6)	37	O-8	CFA-DF0003	Feed Regulator (L)	13	D-14
01-003M-PT01	Screw (M4×L16)	37	O-29	10-003S-SW66	Spring Washer φ6)	37	O-3	CFA-FZ0002	Rubber for D-32	13	D-33
01-003S-2070	Screw (M4×L8)	37	O-31	10-006M-SW66	Screw (M4×L12)	37	O-18	CFA-FZ0002	Stopper Rubber	21	G-24
01-004A-2070	Transformer (110V)	37	O-11	10-017S-8577	Screw for Clip (M5)	39	P-8	CFA-KC0006	Feed Regulator Shaft	13	D-18
01-004S-2070	Screw (M4×L6)	37	O-33	10-039C-2077	Stopper for I-32	25	I-35	CFA-KC0007	Reverse Lever Shaft	13	D-24
01-005A-BH30	Heat Sink Main Motor Drive	37	O-28	10-044A-2070	Thread Trimming Solenoid Ass'y	25	I-9	CFA-KJ0004	Feed Regulator Dial Shaft	13	D-1
01-005A-BT01	Fan	37	O-19	10-143A-2077	Collar for E-5	17	E-7	CFA-KJ0005	Condense Regulator Dial Shaft (L)	13	D-2
01-006A-2070	Pedal Bracket	43	R-1-1	11-0000-2070	Synchronizer	9	B-38	CFA-KJ0006	Condense Regulator Dial Shaft (M)	13	D-3
01-007A-2070	Face Plate	7	A-7	11-015A-Z001	Wiper Solenoid Ass'y	23	H-1	CFA-KZ0001	Reverse Lever Stopper	13	D-32
01-007A-BT01	Connector Cover	37	O-32	11-002C-2077	Wiper Solenoid Stud	23	H-2	CFA-LA0002	Cover	31	L-11
01-009B-2070	Step Motor Power Cable	37	O-50	11-021S-2500	Screw	9	B-37	CGA-GA0010	Needle Plate(8mm)	7	A-35
01-013S-257A	Stud Screw for G-17	21	G-18	11-022W-2500	Washer	9	B-36	CGA-GB0004	Feed Dog (2.5mm)	15	D-79
01-025C-2070	Rear Cover	7	A-24	11-030A-2070	Wiper Solenoid Cable	23	H-28	CGA-GM0001	Needle Bar Stopper (8mm)	9	B-21
01-030R-2070	Cable Holder Rubber	7	A-28	12-001S-2507	Screw	43	R-1-3	CHK-HA0006	Hook	17	E-35
01-035P-1370	Machine Number Plate	7	A-44	12-003A-2070	Reverse Button S/W Ass'y	27	J-3	CHK-HB0005	Bobbin	17	E-39
01-035P-7400	Pin for A-44	7	A-45	12-012S-2700	Screw	27	J-4	CHK-HB0005	Bobbin	35	N-6
01-036S-1701	Tapping Screw(3×P1.6, L16)	39	P-4	15-026M-1000	Cable Tie	39	P-6	CHK-HC0006	Bobbin Case	17	E-37
01-037S-2070	Screw	37	O-41	15-127A-2070	Sensor Ass'y	19	F-25	CHK-HH0003	Inner Bobbin Stopper	17	E-40
01-041A-2070	Slide Plate	7	A-39	18-118A-9000	Crank	33	M-2	CLB-BA0001	Oil Filter Base	29	K-17
01-106A-2070	Pedal Bracket Ass'y	43	R-1	40-084W-1230	Spring Stopper	21	G-7-8	CLB-BB0009	Oil Filter Base Bracket	29	K-19
01-112R-1230	Feed Rock Shaft Rubber Cap	15	D-65	43-027A-2070	Auto Presser Lifting Ball Joint Ass'y	33	M-4	CLB-BF0003	Oil Hose Holder	29	K-12
02-001B-2070	O/P Cable	39	P-5	43-028A-2070	Auto Presser Lifting Solenoid Ass'y	33	M-1	CLB-BG0016	Oil Hose Holder	29	K-7
02-008B-BT01	Step Motor Driving Cable	37	O-47	43-101A-1067	Knee Switch Ass'y	33	M-5	CLB-BG0017	Oil Return Felt Holder	29	K-13
02-010B-BT01	Servo Signar Cable	37	O-48	44-033C-2070	Oil Supporting Cap	29	K-1-1	CLB-BH0004	Hose Holder A	29	K-20
02-011B-BT01	Solenoid Power Cable	37	O-49	46-002C-2070	Clip	39	P-7	CLB-BJ0016	Lower Shaft Gear Cover	29	K-29
03-0000-BR00	Main Motor Drive	37	O-26	91-001C-BT10	Urethan Washer	37	O-39	CLB-BK0002	Block For Adjusting Oil	29	K-32
04-0000-2070	Step Drive (Ass'y)	37	O-23	91-001C-PT10	Table Washer	37	O-40	CLB-CN0001	Piston	17	E-15
04-009C-2070	Needle Bar Stopper (10mm)	35	N-43	91-005C-2070	Timing Gauge (A)	35	N-5	CLB-JC0001	Lower Shaft Bushing (R)	17	E-13
04-011C-2070	Needle Bar Stopper (5mm)	35	N-42	99-003M-2070	Inner Box	35	N-46	CLB-JD0003	Oil Wick	19	F-1-8
04-012C-2070	Needle Bar Stopper (3mm)	35	N-41	AAC-PS0001	Bobbin Winder Ass'y	35	N-23	CLB-JD0003	Oil Wick	19	F-37
04-023C-SC53	QC Sticker	37	O-44	AGA-PS0014	Presser Foot (8mm)	11	C-17	CLB-JD0003	Oil Wick	29	K-5
05-0000-ZIZA	O/P Board	39	P-2	ARB-PS0002	Reverse Feed Control Lever Ass'y	27	J-7	CLB-JD0003	Oil Wick	29	K-9
05-002A-9000	Heat Sink X-Y Drive	37	O-14	AS-003788	Magnetic Holder	9	B-35	CLB-JD0003	Oil Wick	29	K-28
05-003A-XY10	Bracket	37	O-16	AS-007504	Mes Bracket Ass'y	25	I-58	CLB-JF0001	Nipple	17	E-14
06-001A-XY01	Fan Fix Bracket	37	O-45	AS-015124	Arm·Bed	7	A-2	CLB-JF0001	Nipple	29	K-35
06-006A-207M	Feed Regulator Dial (M)	13	D-6	AST-PS0003	Knee Lifting Pad Ass'y	35	N-37	CLB-JF0011	Hook Shaft Pipe	29	K-23
06-007A-207M	Condense Regulator Dial (M)	13	D-7	ATA-PS0011	Thread Tension Adjusting Ass'y	21	G-7	CLB-JG0001	Oil Hose	29	K-14
06-084A-2070	Feed Base Connecting Rod	15	D-75	ATA-PS0025	Second Thread Tension Adjusting Ass'y	21	G-5	CLB-JG0005	Oil Return Tube	19	F-38
06-089A-207M	Feed Dog (5mm)	15	D-80	AZG-PS0001	Needle Bar Frame Ass'y	19	F-1	CLB-JG0005	Oil Return Tube	29	K-6
06-115A-207M	Feed Regulator (M)	13	D-15	BD-000236	Digital Board	37	O-24	CLB-JG0005	Oil Return Tube	29	K-10
06-118A-2070	Connecting Rod Shaft	13	D-17	BD-000675	Power P.C.B (110V,220V)	37	O-9	CLB-JG0005	Oil Return Tube	29	K-15
06-139A-207M	Condense Regulator (M)	13	D-35	BD-000685	Step Driver Board	37	O-13	CLB-JG0005	Oil Return Tube	29	K-16
06-153A-2070	Feed Cam	13	D-46	CA-003385	Servo Motor Driving Cable	37	O-51	CLB-JG0005	Oil Return Tube	29	K-22
06-157A-2070	Connecting Rod	13	D-49	CA-003786	Fan Cable	37	O-52	CLB-JH0004	Lubricator for Hook Shaft	29	K-24
06-178A-2070	Eccentric Shaft	15	D-69	CAC-JB0001	Oiler	35	N-39	CLB-JJ0003	Oil Gauge Window	29	K-2
06-382P-2070	Eccentric Pin	15	D-73	CAC-MA0007	Head Cover	35	N-12	CLB-JJ0009	Oil Window Oil Catcher	29	K-1
07-001A-2070	Hook	17	E-36	CAC-MD0003	Oil Can	35	N-13	CLB-JK0001	Oil Filter	29	K-18
07-002A-2070	Bobbin Case	17	E-38	CAC-MG0003	Oil Pan Gasket	35	N-25	CLB-JL0008	Felt for D-37	15	D-70
07-025S-3701	Screw (M5×L12)	37	O-12	CAC-MH0001	Accessory Bag	35	N-1	CLB-JL0008	Felt for E-27	17	E-29
07-050C-2077	Hook Shaft Gear Cover	25	I-52	CFA-BB00050	Bracket (A)	31	L-3	CLB-JL0017	Oil Return Felt	29	K-11
07-051C-2070	Hook Shaft Gear Cover	25	I-53	CFA-BB0006	Bracket (B)	31	L-4	CLB-JL0022	Felt	19	F-42
07-145A-2070	Bobbin	17	E-43	CFA-BJ0007	Cover	13	D-27	CLB-JL0058	Felt for D-69	15	D-82
07-145A-2070	Bobbin	35	N-6	CFA-BJ0008	Solenoid Bracket	31	L-13	CLB-JN0007	Oil Cap	29	K-25
09-012S-CE53	Earth Sticker	37	O-42	CFA-BK00010	Support	31	L-9	CLB-JP0001	Nipple	29	K-30
09-035S-3701	Nut	43	R-1-4	CFA-CA0002	Condense Regulator Rod	15	D-83	CLF-BA0001	Feed Base	15	D-72
09-041S-3701	Nut for Fan (M4)	37	O-22	CFA-CA0009	Connecting Link	31	L-5	CLF-BJ0006	Guide Plate (A)	13	D-41

Index

Parts No.	Name of Parts	Page	Ref.No.	Parts No.	Name of Parts	Page	Ref.No.	Parts No.	Name of Parts	Page	Ref.No.
CLF-BJ0007	Guide Plate (B)	13	D-42	CST-FF0004	Head Hinge Rubber	35	N-15	CZG-BK0001	Guide Plate	19	F-1-4
CLF-BJ0008	Cover for D-48	13	D-50	CST-JA0006	Oil Pan	35	N-24	CZG-CB0001	Rocking Bracket	19	F-16
CLF-BJ0009	Return Spring Holder	15	D-58	CST-KC0004	Control Body Shaft	35	N-36	CZG-CC0001	Rock Connecting Rod	19	F-18
CLF-CB0012	Feed Rocker Bracket	15	D-68	CST-MF0001	Thread Stand Ass'y	35	N-38	CZG-CM0001	Motor Lever	19	F-13
CLF-CB0013	Feed Rock Crank	13	D-54	CTA-BA0008	Thread Tension Adjusting Body	21	G-7-1	CZG-KD0001	Needle Bar Rock Shaft	19	F-1-2
CLF-CC0003	Connecting Rod	13	D-38	CTA-BJ0002	Presser Plate	21	G-7-6	CZG-KH0001	Eccentric Shaft	19	F-30
CLF-CC0004	Feed Base Connecting Rod	15	D-74	CTA-HK0008	Thread Guide Plate	21	G-5-1	DBS-DA0036	Presser Bar Bushing	11	C-8
CLF-CD0009	Slider Block	13	D-39	CTA-HL0010	Thread Guide Disc	21	G-7-5	DBS-DA0044	Lower Shaft Bushing (F)	17	E-3
CLF-CH0005	Eccentric Pin	13	D-36	CTA-HL0003	Thread Guide Disc	21	G-5-2	DBS-DA0045	Lower Shaft Bushing (M)	17	E-4
CLF-KD0001	Feed Rock Shaft	15	D-63	CTA-HM0005	Thread Tension Adjusting Shaft	21	G-7-3	DBS-DA0046	Hook Driving Shaft Bushing	17	E-18
CLF-KK0001	Feed Regulator Shaft	13	D-37	CTA-JL0002	Felt	21	G-7-4	DBS-DA0047	Hook Shaft Bushing (F)	17	E-25
CLS-CH0001	Eccentric Shaft	17	E-23	CTH-BA0001	Base	9	B-7	DBS-DA0048	Hook Shaft Bushing (R)	17	E-26
CLS-FC0001	Hook Shaft Cover Gasket	17	E-31	CTH-BK0001	Needle Bar Crank Guide	9	B-18	DBS-DA0059	Needle Bar Rock Shaft (F)	19	F-2
CLS-FC0002	Hook Shaft Gear Cover Gasket	25	I-54	CTH-CC0003	Needle Bar Crank	9	B-16	DBS-DA0060	Needle Bar Rock Shaft (R)	19	F-3
CLS-KC0008	Hook Driving Shaft	17	E-19	CTH-HJ0004	Thread Take Up Lever	9	B-6	DBS-DA0061	Bushing	21	G-15
CLS-KC0009	Hook Shaft	17	E-27	CTH-KG0001	Thread Take Up Lever Shaft	9	B-8	DBS-DA0062	Needle Bar Frame Bushing (U)	19	F-1-5
CLS-KH0003	Lower Shaft	17	E-1	CTR-BB0004	Solenoid Base	21	G-10	DBS-DA0063	Needle Bar Frame Bushing (L)	19	F-1-6
CLS-LB0001	Hook Shaft Cover	17	E-32	CTR-CA0004	Connecting Link	21	G-12	DBS-DA0064	Feed Rock Shaft Bushing (F)	15	D-60
CMB-BB0061	Bed Base (R)	7	A-4	CTR-CB0001	Thread Tension Release Plate	11	C-22	DBS-DA0065	Feed Rock Shaft Bushing (M)	15	D-61
CMB-BJ0039	Auxiliary Plate	7	A-36	CTR-CB0003	Thread Tension Release Crank	21	G-17	DBS-DA0066	Feed Rock Shaft Bushing (R)	15	D-62
CMB-BJ0040	Face Plate Guard Cover Stopper	7	A-21	CTR-CC0005	Tension Release Connecting Rod	11	C-23	DBS-DA0147	Feed Regulator Shaft Bushing	13	D-12
CMB-BJ0041	Needle Plate Spacer	7	A-38	CTT-BA0008	Thread Trimming Base	25	I-1	DCL-AA0022	Collar	19	F-31
CMB-FC0020	Top Cover Gasket	7	A-26	CTT-BB0018	Mes Bracket	25	I-37	DCL-AA0023	Collar for D-63	15	D-66
CMB-FC0021	Face Plate Gasket	7	A-6	CTT-BB0019	Thread Trimming Roller Arm	25	I-23	DCL-AA0054	Collar for D-37	13	D-44
CMB-FC0022	Rear Cover Gasket	7	A-23	CTT-BB0022	Thread Trimming Roller Arm Bracket	25	I-14	DCL-AB0008	Upper Shaft Collar (M)	9	B-28
CMB-FZ0001	Cushion	21	G-25	CTT-BF0009	Knife Holder	25	I-38	DCL-AB0009	Upper Shaft Collar (R)	9	B-34
CMB-HK0002	Face Plate Thread Guide	7	A-12	CTT-BJ0034	Lower Thread Holder	25	I-44	DCL-BA0009	Spacer	11	C-19
CMB-HK0050	Thread Guide for Arm	21	G-3	CTT-BJ0035	Fixed Mes Clutch	25	I-41	DGR-AB0005	Lower Shaft Gear	17	E-20
CMB-HK00210	Thread Guide with Three Holes	21	G-1	CTT-BJ0036	Stopper for I-12	25	I-24	DGR-AB0006	Hook Driving Shaft Gear	17	E-21
CMB-LA00400	Top Cover	7	A-27	CTT-BN0003	Screw (3/16"n=32, l=6)	25	I-29	DGR-AD0005	Hook Driving Gear	17	E-22
CMB-LA01090	Face Plate Guard	7	A-13	CTT-BN0004	Thread Trimming Cam Roller Base	25	I-21	DGR-AD0006	Hook Shaft Gear	17	E-34
CMB-LA01100	Face Plate Guard Cover	7	A-14	CTT-CA0009	Connecting Link	25	I-7	DPK-BA0004	O-Ring (P5)	17	E-24
CMB-LA01110	Cover Window	7	A-15	CTT-CB0013	Thread Trimming Drive Crank	25	I-32	DPK-BA0004	O-Ring	19	F-6
CMB-LA01210	Belt Cover (A)	35	N-19	CTT-CC0011	Moving Mes Connecting Rod	25	I-30	DPK-BA0005	O-Ring	13	D-10
CMB-LA01220	Belt Cover (C)	35	N-20	CTT-CL0006	Thread Trimming Cam Roller	25	I-19	DPK-CA0002	Rubber	29	K-36
CMB-LB00360	Face Plate	7	A-5	CTT-CM0016	Thread Trimming Driving Lever	25	I-12	DPK-CA0008	Lower Shaft Rubber Cap	17	E-42
CMB-LD00020	Caution Sticker	7	A-46	CTT-CM0017	Thread Trimming Clutch Plate	25	I-2	DPK-CA0022	Rubber Cap for Bed (S)	7	A-34
CMB-NB00020	Face Plate Mes	7	A-9	CTT-DD0001	Thread Trimming Cam	17	E-5	DPK-CA0023	Reverse Lever Shaft Rubber Cap	13	D-23
CNB-BF00040	Needle Bar Holder	9	B-14	CTT-NA0005	Moving Mes	25	I-40	DPK-CB0001	Rubber Cap for Arm Rear Part (L)	7	A-32
CNB-BJ0003	Needle Bar Stopper Plate	9	B-22	CTT-NB0010	Fixed Mes	25	I-39	DPK-CB0007	Rubber Cap for Arm Upper Part	7	A-31
CNB-BK00010	Needle Bar Holder Guide	9	B-17	CUS-DA0007	Link Cam	9	B-2	DPK-CB0008	Rubber Cap for Arm Rear Part(S)	7	A-30
CNB-HK00060	Thread Guide	9	B-26	CUS-KC0006	Upper Shaft	9	B-1	DPK-CB0019	Rubber Bushing Cable Guide	27	J-11
CNB-KA00050	Needle Bar	9	B-13	CWP-BB0010	Wiper Solenoid Base	23	H-4	DPK-CZ0002	Rubber Cap	21	G-26
CPB-BF0003	Presser Bar Holder	11	C-10	CWP-BB0011	Wiper Clamp Bracket	23	H-23	DPK-CZ0006	Rubber Cap	11	C-39
CPB-BH00050	Finger Guard	11	C-17-1	CWP-BF0003	Wiper Clamp	23	H-21	DPL-AA0003	Pulley	9	B-40
CPB-CM0003	Presser Bar Lifting Lever	11	C-14	CWP-BH0005	Wiper	23	H-20	DPL-BD0012	Upper Shaft Timing Pulley	9	B-30
CPB-DF0002	Presser Bar Lifting Cam Shaft	11	C-12	CWP-BH0006	Thread Pulling Wire	23	H-14	DPL-BD0013	Lower Shaft Timing Pulley	17	E-9
CPB-KB0003	Presser Bar	11	C-6	CWP-BJ0008	Wiper Driving Notch	9	B-10	DPN-AA0026	Rocking Joint Shaft	19	F-21
CPB-KC0002	Presser Spring Rod	11	C-5	CWP-BJ0009	Wiper Notch Holder	9	B-11	DPN-AA0027	Pin	21	G-8
CPM-BH0002	Connecting Bar	11	C-29	CWP-BJ0012	Wiper Driving Plate	23	H-17	DPN-AA0028	Shaft	11	C-20
CPM-CB0003	Knee Lifting Link	11	C-31	CWP-CB0006	Thread Pulling Wire Crank	23	H-13	DPN-AA0029	Needle Bar Frame Fixing Pin (F)	19	F-4
CPM-CM0008	Presser Lifting Link	11	C-26	CWP-CC0004	Wiper Connecting Rod	23	H-25	DPN-AA0030	Needle Bar Frame Fixing Pin (R)	19	F-5
CPM-CR0001	Knee Lifting Bar	11	C-32	CWP-CM0003	Thread Pulling Wire Driving Lever	23	H-9	DPN-AA0035	Reverse Button Actuator Pin	27	J-5
CRB-FD0001	Insulated Rubber	27	J-10	CWP-FB0001	Eccentric Rubber	23	H-8	DPN-AA0082	Slider Shaft	13	D-40
CRB-LC0001	Reverse Button Case	27	J-1	CWP-LB0001	Wiper Connecting Rod Cover	23	H-19	DPN-AA0085	Dial Pin	13	D-8
CST-BB0025	Head Hinge	35	N-14	CZG-BA0001	Motor Base	19	F-8	DPN-AA0086	Feed Regulator Dial Pin	15	D-85
CST-BB0029	Control Body	35	N-30	CZG-BB0001	Plate Spring Clamp	19	F-36	DPN-AD0027	Thread Tension Release Pin	21	G-7-11
CST-CR0004	Head Rest	35	N-40	CZG-BC0001	Needle Bar Frame	19	F-1-1	DPN-AD0030	Motor Lever Shaft	19	F-15
CST-CR0005	Cap	35	N-29	CZG-BF0001	Rocking Joint	19	F-19	DPN-AD0031	Crank Shaft	21	G-16
CST-FB0002	O-Ring	35	N-28	CZG-BJ0001	Sensor Slit	19	F-23	DPN-AD0069	Roller Arm Bracket Shaft	25	I-15
CST-FD0011	Head Support Rubber (A)	35	N-16	CZG-BJ0002	Plate Spring Holder	19	F-34	DPR-BJ0005	Sensor Bracket	19	F-26
CST-FD0012	Head Support Rubber (B)	35	N-17	CZG-BJ0008	Sensor Setting Plate	19	F-27	DSC-AA0003	Screw	35	N-33

Index

Parts No.	Name of Parts	Page	Ref.No.	Parts No.	Name of Parts	Page	Ref.No.	Parts No.	Name of Parts	Page	Ref.No.
DSC-AC0004	Adjusting Screw	11	C-36	DSC-BJ0014	Screw (9/64"n=40, l=6)	25	I-18	DSP-AA0018	Piston Spring	17	E-16
DSC-AC0005	Screw (M3xP0.5, l=3.8)	23	H-5	DSC-BJ0022	Screw (3/32"n=56, l=2.2)	25	I-45	DSP-AA0028	Dial pin Spring	13	D-9
DSC-AC0015	Screw (1/8"n=44, l=8)	15	D-84	DSC-BJ0024	Screw (3/16"n=32, l=10)	13	D-31	DSP-AA0054	Presser Foot Stop Spring	11	C-17-3
DSC-BA0007	Screw (3/16"n=32)	9	B-39	DSC-BJ0039	Screw (5/16"n=24)	7	A-52	DSP-AA0057	Spring for H-2	23	H-3
DSC-BA0007	Screw (3/16"n=32, l=8.4)	31	L-1	DSC-BJ0042	Screw (9/64"n=40 l=6)	25	I-49	DSP-AA0058	Adjusting Spring for I-44	25	I-47
DSC-BA0007	Screw (3/16"n=32)	31	L-14	DSC-CA0002	Screw	21	G-7-10	DSP-AA0059	Adjusting Spring for K-26	29	K-27
DSC-BA0009	Screw (9/64"n=40, l=5.5)	7	A-22	DSC-CA0012	Screw	17	E-28	DSP-AB0032	Spring for H-17	23	H-18
DSC-BA0009	Screw (9/64"n=40, l=5.5)	19	F-24	DSC-CA0017	Screw (15/64"n=28, l=4.5)	15	D-64	DSP-AB0033	Return Spring	15	D-59
DSC-BA0009	Screw (9/64"n=40, l=5.5)	29	K-8	DSC-CA0026	Screw (1/8"n=44)	7	A-54	DSP-AC0007	Return Spring for I-2	25	I-3
DSC-BA0011	Screw (11/64"n=40)	27	J-8	DSC-CB0001	Screw	21	G-6	DSP-AC0008	Return Spring	25	I-11
DSC-BA0012	Screw (3/32"n=56, l=8.4)	17	E-33	DSC-CB0003	Screw (11/64"n=40)	11	C-38	DSP-AC0009	Roller Return Spring	25	I-17
DSC-BA0013	Screw (1/4"n=28, l=20)	31	L-2	DSC-CB0004	Screw (1/4"n=40, l=6)	9	B-4	DSP-AC0010	Fixed Mes Clutch Spring	25	I-42
DSC-BA0017	Plus Minus Round Head Screw	25	I-57	DSC-CB0004	Screw (1/4"n=40, l=6)	13	D-26	DSP-AC0018	Tension Release Return Spring	21	G-20
DSC-BA0026	Screw (1/8"n=44, l=4)	23	H-15	DSC-CB0004	Screw (1/4"n=40, l=6)	17	E-11	DSP-AC0019	Spring for Lifting Link Shaft	11	C-28
DSC-BA0027	Screw	35	N-31	DSC-CB0005	Screw (15/64"n=28, l=7.5)	13	D-45	DSP-AC0020	Spring for Link Stud	11	C-34
DSC-BB0013	Screw	9	B-12	DSC-CB0007	Screw (M5, l=5)	11	C-9	DSP-AC0022	Spring for J-7	27	J-9
DSC-BB0020	Screw (9/64"n=40)	13	D-51	DSC-CB0007	Screw (M5, l=5)	13	D-13	DSP-AC0047	Control Body Spring	35	N-34
DSC-BB0029	Screw (9/64"n=40, l=8)	7	A-8	DSC-CB0007	Screw (M5)	19	F-7	DSP-AC0048	Reverse Lever Return Spring	13	D-29
DSC-BB0029	Screw (9/64"n=40, l=8)	7	A-10	DSC-CB0010	Hex Set Screw	15	D-67	DSP-AD0008	Plate Spring	7	A-49
DSC-BB0029	Screw (9/64"n=40, l=8)	23	H-7	DSC-CB0010	Hex Set Screw	17	E-8	DSP-AD0008	Plate Spring	19	F-33
DSC-BB0035	Screw (9/64"n=40, l=5.5)	23	H-12	DSC-CB0011	Screw (1/4"n=40, l=8.5)	9	B-5	DSP-BA0007	Thread Tension Adjusting Spring	21	G-7-7
DSC-BC0004	Screw (9/64"n=40, l=7)	7	A-37	DSC-CB0011	Screw (1/4"n=40, l=8.5)	17	E-6	DSP-BA0007	Thread Tension Adjusting Spring	35	N-44
DSC-BC0004	Screw (9/64" n=40, l=7)	9	B-9	DSC-CB0011	Screw (1/4"n=40, l=8.5)	17	E-12	DSP-BA0020	Spring	21	G-5-3
DSC-BC0004	Screw	21	G-4	DSC-CB0018	Screw (1/4"n=40, l=8.5)	13	D-47	DSP-BB0006	Thread Take Up Spring	21	G-7-2
DSC-BF0001	Screw (1/8"n=44)	7	A-17	DSC-FA0016	Stud Screw for G-12	21	G-13	DSP-BB0006	Thread Take Up Spring	35	N-45
DSC-BF0001	Screw (1/8"n=44, l=5.5)	9	B-25	DSC-FA0044	Stud Screw for I-32	25	I-33	DSR-AK0001	Side Ring	9	B-31
DSC-BF0007	Screw (15/64"n=28)	9	B-3	DSC-FA0049	Stud Screw for I-19	25	I-20	DTC-AH0001	Cable Holder	19	F-22
DSC-BF0007	Screw (15/64"n=28, l=14)	25	I-26	DSC-FA0050	Stud Screw for I-30	25	I-31	DTC-AH0009	Cord Holder	19	F-29
DSC-BF0008	Screw (15/64"n=28, l=14.5)	9	B-41	DSC-FA0058	Stud Screw for C-32	11	C-30	DTC-AK0003	Magnetic	35	N-27
DSC-BF0010	Slot Head Screw	7	A-56	DSC-FA0059	Stud Screw for C-23	11	C-24	DWS-AA0001	Washer	19	F-39
DSC-BF0010	Screw (11/64"n=40, l=11)	21	G-11	DSC-FA0123	Stud Screw for A-14	7	A-18	DWS-AA0004	Washer	7	A-19
DSC-BF0011	Screw (3/16"n=28, l=12)	23	H-22	DSC-FA0124	Stud Screw for D-54	13	D-55	DWS-AA0004	Washer	11	C-25
DSC-BF0012	Screw (11/64"n=40)	7	A-25	DSC-FA0130	Stud Screw for H-23	23	H-26	DWS-AA0004	Washer	21	G-19
DSC-BF0014	Screw (9/64"n=40)	25	I-48	DSC-FA0131	Stud Screw for I-41	25	I-43	DWS-AA0006	Washer	21	G-14
DSC-BF0019	Screw (3/16"n=28, l=12)	13	D-11	DSC-FA0132	Adjusting Screw	25	I-28	DWS-AA0011	Washer	19	F-41
DSC-BF0025	Screw (11/64"n=40)	29	K-34	DSC-FA0133	Stud Screw	31	L-7	DWS-AA0015	Washer	11	C-7
DSC-BF0026	Screw	15	D-76	DSC-FB0008	Thread Trimming Stud Screw "A"	25	I-8	DWS-AA0038	Washer	11	C-16
DSC-BF0028	Screw (3/32"n=56, l=4.8)	25	I-46	DSC-FB0014	Stud Screw for D-38	13	D-52	DWS-AA0050	Washer	23	H-11
DSC-BF0029	Screw (15/64"n=28, l=17)	15	D-57	DSC-FF0017	Screw	23	H-24	DWS-AA0053	Washer	19	F-17
DSC-BF0031	Screw (11/64"n=40, l=8)	9	B-19	DSC-FG0009	Shaft for I-2	25	I-4	DWS-AA0054	Washer	21	G-21
DSC-BF0031	Screw (11/64"n=40, l=8)	9	B-20	DSC-FG0010	Shaft for I-12	25	I-10	DWS-AA0056	Washer	13	D-19
DSC-BF0031	Screw (11/64"n=40, l=11)	25	I-36	DSC-GB0001	Stud for Knee Lifting Link	11	C-33	DWS-AA0123	Washer	15	D-81
DSC-BF0036	Screw (11/64"n=40, l=8)	19	F-35	DSC-HA0001	Presser Adjusting Screw	11	C-1	DWS-AA0126	Hinge Washer	23	H-10
DSC-BF0038	Screw (9/64"n=40, l=9)	11	C-18	DSC-HC0001	Bed Base (F)	7	A-3	DWS-AA0127	Spacer for	23	H-6
DSC-BF0040	Screw (3/16"n=32, l=18)	29	K-26	DSC-HZ0008	Stud	21	G-5-4	DWS-AA0050	Washer	23	H-11
DSC-BF0045	Screw	17	E-30	DSD-AA0009	Thread Tension Release Solenoid Ass'y	21	G-9	DWS-AA0132	Washer	31	L-6
DSC-BF0046	Cap Screw for E-15	17	E-17	DSD-AA0022	Reverse Feed Solenoid Ass'y	31	L-12	DWS-CC0001	Wave Washer	7	A-20
DSC-BF0061	Screw (M8xP1.25)	35	N-26	DSN-AA0003	Nut (11/64"n=40)	11	C-35	EM-000511	Pedal Unit Ass'y	43	R-1-2
DSC-BF0064	Screw	9	B-15	DSN-AA0004	Nut (15/64"n=28)	13	D-53	GP-001733	Dust Protector	9	B-44
DSC-BF0119	Screw (1/8 n=40, l=10)	11	C-17-2	DSN-AA0004	Nut (15/64"n=28)	25	I-5	GP-009241	Model Sticker (7L)	7	A-40
DSC-BG0001	Screw (9/64"n=40, l=8)	17	E-41	DSN-AA0004	Nut	31	L-8	GP-009246	Model Sticker (L)	7	A-41
DSC-BG0002	Screw (5/16"n=24)	9	B-42	DSN-AA0006	Nut (3/16"n=32)	25	I-22	GP-009261	Model Sticker (7M)	7	A-42
DSC-BJ0002	Screw (11/64"n=40)	7	A-50	DSN-AA0007	Nut	21	G-2	GP-009262	Model Sticker (M)	7	A-43
DSC-BJ0002	Screw (11/64"n=40, l=8)	13	D-43	DSN-AA0009	Nut (11/64"n=40)	21	G-23	GP-011049	Caution Sticker	37	O-37
DSC-BJ0002	Screw (11/64"n=40, l=6.5)	25	I-25	DSN-AA0009	Nut (11/64"n=40)	25	I-50	GP-017378	Fan Cover	37	O-20
DSC-BJ0002	Screw (11/64"n=40, l=7.4)	29	K-4	DSN-AA0009	Nut (11/64"n=40)	29	K-31	GP-022204	Membrane S/W	39	P-3
DSC-BJ0003	Screw (9/64"n=40, l=10)	11	C-15	DSN-AA0011	Nut (9/64"n=40)	7	A-11	GP-022749	Control Box	37	O-1
DSC-BJ0004	Screw (11/64"n=40)	7	A-16	DSN-AA0022	Nut (9/32"n=28)	13	D-56	GP-022753	Side Cover	37	O-7
DSC-BJ0004	Screw (11/64"n=40)	11	C-11	DSN-CC0001	Nut (9/16"n=20)	11	C-2	GP-022754	Front Cover	37	O-5
DSC-BJ0004	Screw (11/64"n=40, l=10)	15	D-71	DSN-CD0001	Thread Adjusting Nut	21	G-7-9	GP-022757	Transformer (220V)	37	O-11
DSC-BJ0004	Screw (11/64"n=40)	27	J-2	DSP-AA0015	Presser Spring (M)	11	C-4	GP-048444	Feed Dog(5mm)	15	D-80
DSC-BJ0012	Screw (11/64"n=40)	35	N-21					PBR-AA0013	Upper Shaft Bearing (F)	9	B-27

Index

Parts No.	Name of Parts	Page	Ref.No.	Parts No.	Name of Parts	Page	Ref.No.	Parts No.	Name of Parts	Page	Ref.No.
PBR-AA0013	Lower Shaft Bearing (R)	17	E-10								
PBR-AA0023	Upper Shaft Bearing (M)	9	B-29								
PBR-AA0024	Upper Shaft Bearing (R)	9	B-33								
PBR-AA0025	Needle Bar Crank Rod Bearing	9	B-43								
PBR-BA0013	Feed Cam Bearing	13	D-48								
PBS-BA0001	Reverse Lever Shaft Bushing (F)	13	D-21								
PBS-BA0007	Reverse Lever Shaft Bushing (R)	13	D-22								
PBT-BD0010	Timing Belt	9	B-32								
PMT-BH0002	Motor Ass'y	19	F-11								
PPK-BA0004	O-Ring (P4)	11	C-13								
PPK-BA0006	O-Ring (P3)	11	C-21								
PPK-BB0001	O-Ring (G25)	29	K-3								
PPN-AA0003	Pin	19	F-1-3								
PPN-AF0005	Spring Pin ($\phi 5$, $l=14$)	25	I-13								
PPN-AG0003	Snap Pin	21	G-22								
PSC-AC0002	Screw (M4, $l=10$)	19	F-12								
PSC-AC0006	Screw (M6, $l=18$)	19	F-20								
PSC-AC0006	Screw (M6×P1)	31	L-10								
PSC-AC0008	Screw (M4×P0.7)	19	F-40								
PSC-AC0015	Screw (M4×P0.7, $l=8$)	13	D-28								
PSC-AC0015	Screw (M4, $l=8$)	19	F-28								
PSC-AC0026	Bolt	33	M-3								
PSC-AC0061	Screw (M5, $l=12$)	19	F-14								
PSC-AC0064	Screw (M5, $l=25$)	19	F-10								
PSC-AG0001	Screw (M4, $l=8$)	9	B-23								
PSC-BA0001	Screw (M3×P0.5, $l=8$)	25	I-27								
PSC-BB0008	Screw (M5, $l=25$)	19	F-9								
PSC-BJ0001	Screw (1/8" n=40, $l=6$)	15	D-78								
PSC-CB0004	Screw (M8×L8)	29	K-33								
PSC-DD0001	Screw (9/64" n=40, $l=5.5$)	35	N-22								
PSN-AA0005	Nut(M8×1.25)	7	A-51								
PSN-AA0014	Nut (M6)	11	C-37								
PSR-AC0001	E-Ring ($\phi 9$)	27	J-6								
PSR-AC0001	E-Ring($\phi 9$)	35	N-35								
PSR-AC0003	E-Ring ($\phi 4$)	11	C-27								
PSR-AC0003	E-Ring ($\phi 4$)	25	I-16								
PSR-AC0004	E-Ring($\phi 3$)	23	H-27								
PSR-AC0005	E-Ring ($\phi 6$)	25	I-6								
PSR-AC0008	E-Ring ($\phi 8$)	13	D-20								
PTC-AH0001	Cable Holder (5N)	7	A-47								
PTC-AH0003	Cable Holder (6N)	7	A-48								
PTC-AH0003	Hose Holder B	29	K-21								
PTC-AH0005	Cable Holder(3N)	7	A-55								
PTL-AB0001	L-Wrench (2mm)	35	N-11								
PTL-AB0002	L-Wrench (5mm)	35	N-7								
PTL-AB0003	L-Wrench (2.5mm)	35	N-10								
PTL-AB0004	L-Wrench (4mm)	35	N-8								
PTL-AB0005	L-Wrench (3mm)	35	N-9								
PTL-BA0001	Driver (L)	35	N-2								
PTL-BA0002	Driver (S, M)	35	N-3								
PWS-AA0005	Washer	15	D-77								
PWS-AA0005	Washer	25	I-51								
PWS-CA0001	Spring Washer	25	I-55								
PWS-CA0004	Spring Washer	7	A-29								
SC-000683	Screw (M4×L12)	37	O-15								
SC-000683	Screw (M4×L12)	37	O-17								
SC-000683	Screw (M4×L16)	37	O-30								
SPS-2070-OP	O/P Box (Ass'y)	39	P-1								
-	Bag	35	N-47								
-	CD Manual	35	N-48								
-	Needle	35	N-4								
-	Needle	9	B-24								