



PARTS BOOK

KM-2310U

모터직결형, 고속 1분침 자동급유
본봉 자동사절 재봉기

Direct Drive, High Speed,
1-Needle Automatic Lubrication
Lock Stitch Machine with
An Automatic Thread Trimmer

PME-131022

Information

A. Parts Book 구성

Structure of Part Book

① **A** Arm, Bed & Machine Body Mechanism
팔, 침대 및 의장품 관계

④ ⑤ ⑥ ⑦ ⑧ ⑨

Ref. No.	Parts No.	Note	Name of Parts	중 명	Q'ty	Assembly No.
A-1	01-12841-03		Arm	팔	1	
A-2	01-10073-06		Bed	침대	1	
A-4	01-02120-00		Face Plate	면판	1	
A-5	01-02044-12M		Face Plate Gasket	면판 가스켓	1	
A-6	01-1174-4122		Screw(L)1/84*mm2	볼트	10	
A-7	01-11011-123D		Rubber Cap For Face Plate	면판 고무뚜껑	2	
A-9	01-00194-123D		Caution Sticker	경고 스티커	1	
A-8	01-011973-00		Thermap Layer Cover	발열기 피막	1	
A-10	01-02030-04*mm2		Screw(S)1/84*mm2	볼트(S)1/84*mm2	1	
A-11	01-01746-00		Bed Cover(L)	침대 커버(좌)	1	
A-12	01-01441-123M		Bed Cover(Gasket,L)	침대 커버 가스켓(좌)	1	
A-13	01-02643-123D		Screw(L)1/84*mm2	볼트(L)1/84*mm2	14	
A-13-1	45-0244-1000		Washer	와셔	2	
A-14	01-01750-00		Bed Cover(S)	침대 커버(우)	1	
A-15	01-01744-123M		Bed Cover(Gasket,R)	침대 커버 가스켓(우)	1	
A-16	4402011-100M		Tank Rubber Cap	고열 탱크 고무뚜껑	1	
A-17	01-02074-123D		Thread Guide with Three Poles	세극을 안내하는 가이드	15Set	
A-19	01-02010-123D		Thread Guide(L)	가이드 실리(좌)	1	
A-20	01-02010-123D		Thread Guide(R)	가이드 실리(우)	3	
A-21	01-01000-123D		Thread Guide(S)	가이드 실리(중)	1	
A-22	01-01643-00		Arm Thread Guide Assy	팔을 안내하는 실리(중)	1	
A-23	11-01750-7500		Nut	너트	1	
A-24	01-02010-123M		Thread Guide(L)	실리(좌)(H)	1	
A-25	0102070-100M		Silicon Tank Assy	실리콘 탱크 완제품	15Set	
A-26	0102060-100M		Silicon Tank	실리콘 탱크 부품	1	
A-27	0102060-100M		Silicon Oil Window	실리콘 유량 창	1	
A-28	0102400-100M		Silicon Part	실리콘 부품 완제품	1	
A-29	01-01303-00		Part for Silicon Oil Supply	실리콘 공급용 부품	1	
A-30	01-01643-00		Screw(L)1/84*mm2	볼트(L)	1	
A-31	04-02410-123D		Arm Upper Part Rubber Cap	팔 상부 고무 뚜껑	2	
A-33	04-02010-123M		Needle Bar Rubber Cap	바늘봉 고무 뚜껑	1	
A-34	01-04210-442L		Rubber Cap(L)	고무뚜껑(좌)	4	
A-35	44-02110-7400		Rubber Cap(S)	고무뚜껑(중)	7	
A-36	01-01750-123M		Bed Rubber	침대 고무	1	
A-37	01-019817-00		Welder (Sticker,M)	고열 스티커-중형용	1	
A-38	01-019818-00		M Welder (Sticker,M)	고열 스티커-중형용	1	
A-39	01-01993-00		L Welder (Sticker,L)	고열 스티커-대형용	1	
A-40	01-01993-00		K Welder (Sticker,K)	고열 스티커-대형용	1	
A-41	01-02110-123D		Tap Cover	타프 커버	2	
A-42	01-02114-123M		Tap Cover	타프 커버	1	
A-43	41-0114-123M		Silobin Winder Assy	실리(좌)	15Set	
A-44	41-02010-123M		Silobin Winder (Base Assy)	실리(좌) 베이스	1	
A-45	41-0205A-123M		Silobin Winder (Shaft)	실리(좌) 샤프트	1	
A-46	01-02050-00	S. Other	Sticker(S)	태그 스티커	1	
A-47	01-01010-7500		Screw(S)	볼트(S)	1	
A-48	41-02060-123M		Silobin Winder	실리(좌) 부품	1	
A-49	01-0104-550T		Screw(L)1/84*mm2	볼트(L)	2	
A-50	41-02080-123M		Silobin Winder Action Ring	실리(좌) 작동 링	1	
A-51	41-02090-123M		Silobin Winder (Rubber Ring)	실리(좌) 고무 링	1	
A-52	41-02100-123M		Silobin Winder (Nut)	실리(좌) 너트	1	
A-53	41-02110-123M		Silobin Winder Adjusting Plate	실리(좌) 조정판	1	
A-54	01-01100-123D		Screw(L)1/84*mm2	볼트(L)	1	
A-55	01-01194-123D		Washer	와셔	1	
A-56	41-02130-123M		Silobin Winder (Shaft)	실리(좌) 샤프트	1	
A-57	41-02140-123M		Silobin Winder Adjusting Term	실리(좌) 조정판	1	
A-58	0102150-04113		Screw(M)4x20,7	볼트(M)	1	

Note: P= Heavy Material(중형용), M=Medium Material(중형용), MA= Pneumatic Heavy Material(공압식 중형용)
L= Light Material(대형용), K=Kitt Material(너트용), EL=Large Shuble Hole(대 시틀 홀)

①: 관계 별 고유 코드

Unique code by mechanism

②: 관계 별 고유 명칭

Unique name by mechanism

③: 관계도

Explode view

④ Ref.No.: 파트별 고유 식별 번호

Unique identification number by part

⑤ Parts No.: 고유 제품 코드

Unique Product code

Ex)

구분 Category	Code	비고 remarks
구 부품 Old part	01-030C-1230	
신 부품 New Part	AS-000000-00	조(組) 파트 Set parts
	GP-000000-00	기구적 파트 Instrumental parts
	EP-000000-00	전기적 파트 Electrical parts

⑥ Note: 공지사항 표기 및 메모

Refers to notice and memo

⑦ 품

명: 파트의 고유 품명

Name of Part: Unique name of parts

⑧ Q'ty : 파트의 수량

The number of parts

⑨ Assembly no.: 조(組) 파트의 식별 번호

Unique identification number by set part

Warning

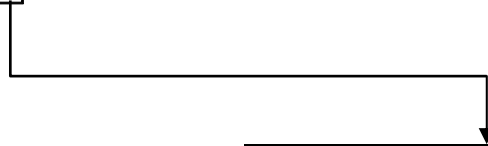
1. 조에 속한 파트는 개별 조립 시 제품의 파손 또는 재봉 불량 발생될 수 있어 해당 파트에 대한 주문 시에는 조 품목으로만 구입이 가능합니다.
2. 본 책자는 Parts Book으로 제작되었으므로 매뉴얼로 사용 불가합니다.
3. 사전 예고 없이 사양이 변경 될 수도 있습니다.

1. The parts classified as ass'y items may cause damage to the machine or bad sewing when they are separately assembled. Hence, when they are ordered, they can be purchased as ass'y items only.
2. This is a parts book. It cannot be used as a manual.
3. Parts are Subject to change in Design Without Prior Notice.

Note

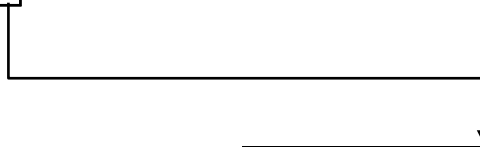
- 썬스타 제품의 부품은 아래 인터넷주소로 접속하시어 신청할 수 있습니다.
<http://www.sunstarcs.com>
- 가입된 회원께서는 썬스타 포탈 사이트에 로그인후 필요한 부품을 신청할 수 있습니다.
- 부품관리-발주관리-발주등록 항목에서 부품번호와 신청수량을 입력하여 등록하시면 발주가 됩니다.
- 부품번호를 모르시는 경우 파츠북 조회를 클릭하시고 사용하는 기종을 검색하여 선택하시면 해당 기종의 파츠북을 조회할 수 있습니다.
- 파츠북은 관계별로 구분되어 있으며 관계를 알고 있다면 부품 찾기가 용이합니다.
- You can make an order for the parts of Sunstar machine to connect internet address.
<http://www.sunstarcs.com>
- You can request for parts you want after login if you are a registered member.
- In parts Management - Order Management - Order Registration entry, you can place an order by entering the part number and quantity.
- If you don't know the parts number, click the parts book menu bar.
In a download list, you can read parts book by searching model you use.
- This parts book is classified by the mechanism, therefore you can find part easily.

KM-2310U



Code	Application
G	General Materials
B	Heavy Materials

KM-2310U



코드	용도
G	일반용
B	후물용

CONTENTS

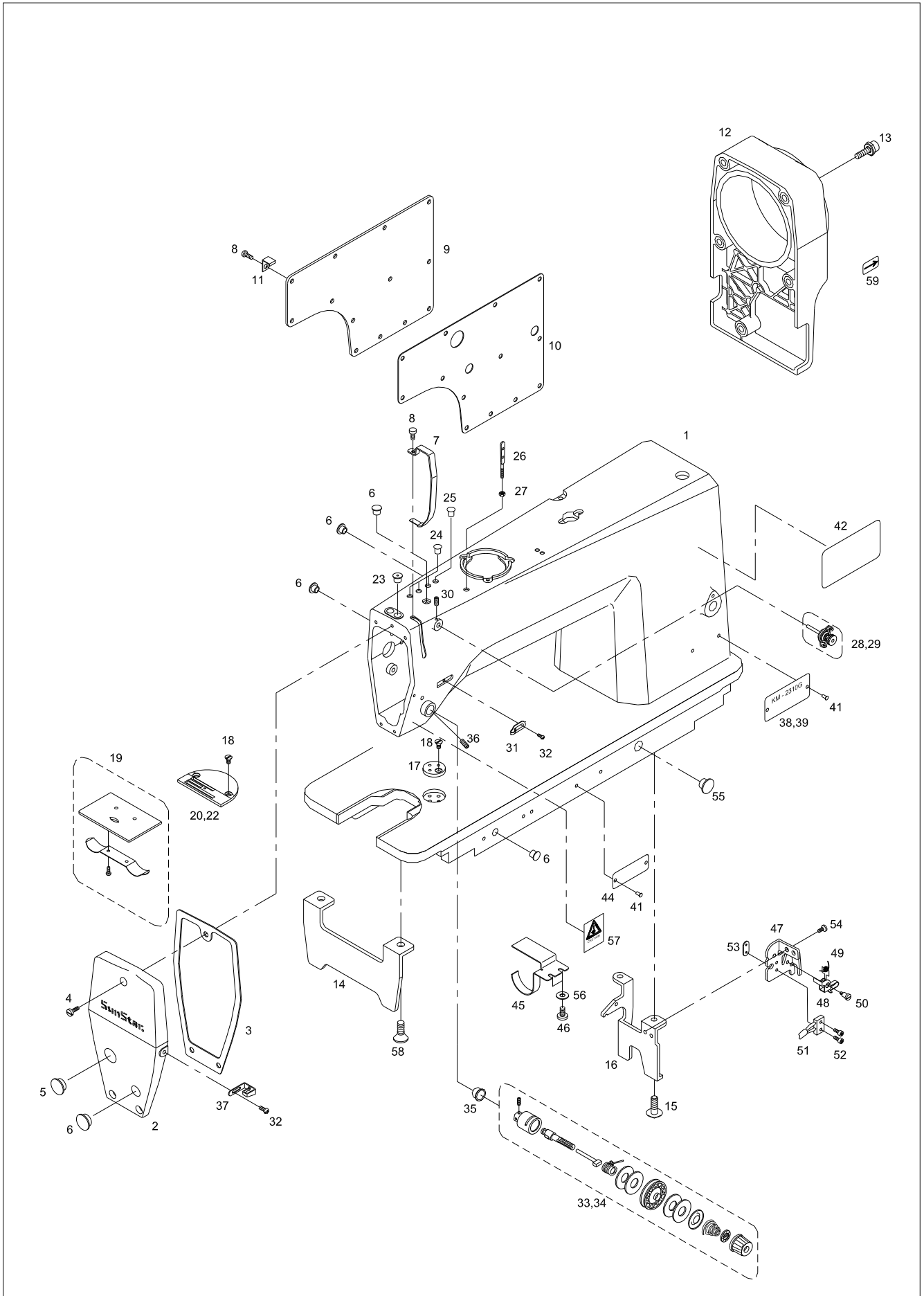
목 차

A	Machine Body Mechanism 두부외장 관계	6
B	Upper Shaft & Needle Bar Mechanism 상축, 실채기, 바늘대 관계	10
C	Thread Winder Mechanism 실감기 관계	14
D	Feed Adjusting Mechanism 피이드 조절 관계	16
E	Lower Shaft Mechanism 하축 관계	18
F	Feed Mechanism 피이드 관계	20
G	Presser Foot & Tension Release Mechanism 노루발 및 실눛추기 관계	22
H	Lubrication Mechanism 급유 관계	24
I	Thread Trimmer Mechanism 사절 관계	26
J	Oil Pan & Knee Lifting Mechanism 오일팬 및 무릎올림 관계	30
K	Reverse Button Mechanism 역진 버튼 관계	32
L	Thread Wiper Mechanism 와이퍼 관계	34
M	Auto Knee Lifter Solenoid Mechanism (Option) 자동무릎올림 관계 (선택사양)	36
N	Accessories Mechanism 액세서리 관계	38
	Index 인덱스	40

A

Machine Body Mechanism

외장 관계



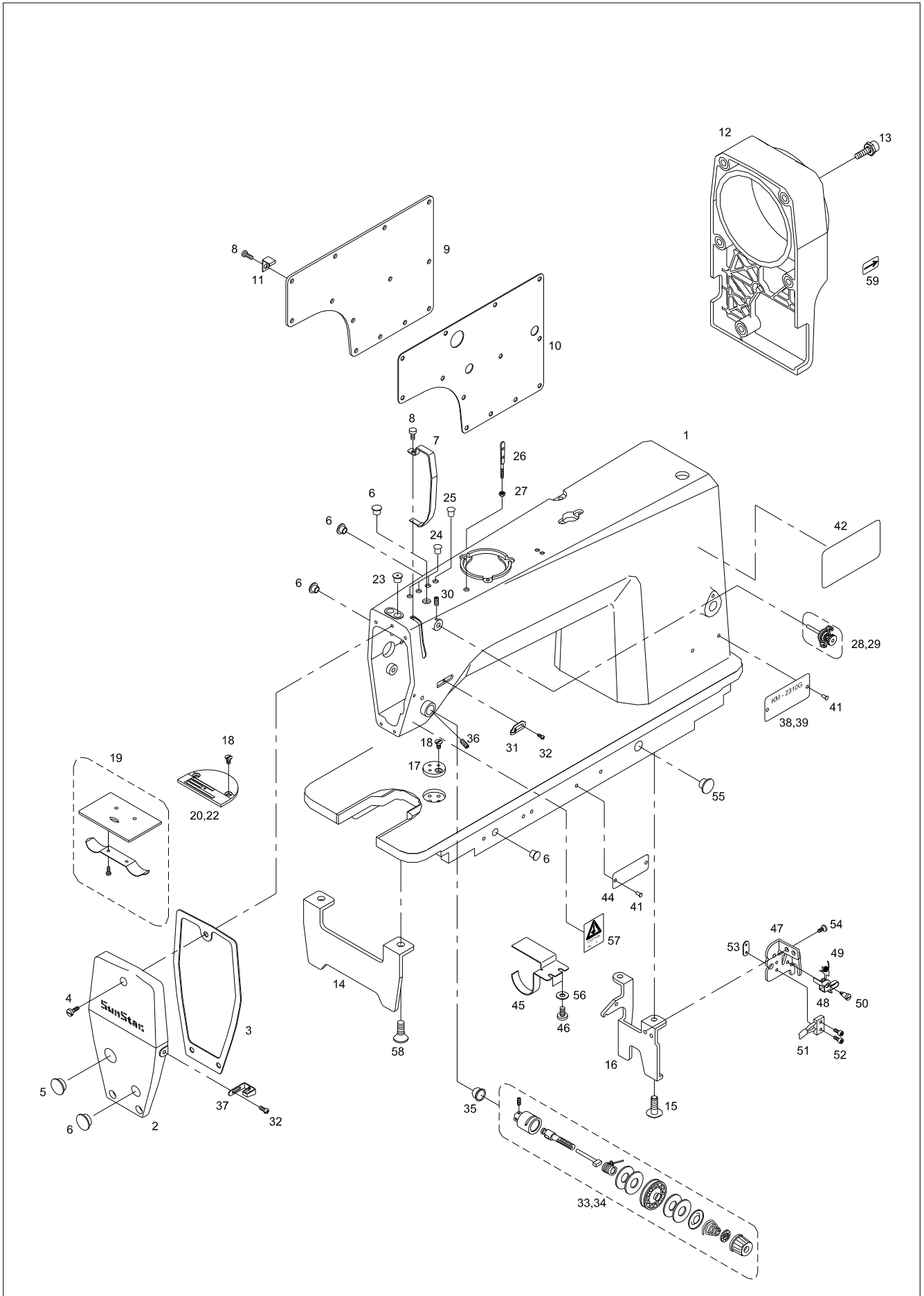


Ref. No.	Parts No.	Note	Name of Parts	품 명	Q'ty		Applied Period
					G	B	
A-1	AS-001750-01		Arm·Bed	아암 베드	1	1	
A-2	CMB-LA010801		Face Plate	면판	1	1	
A-3	CMB-FC003900		Face Plate Gasket	면판 가스켓	1	1	
A-4	DSC-BF008400		Screw [3/16" n=28, L=11]	침나사	3	3	
A-5	DPK-CB000900		Face Plate Rubber Cap (L)	면판 고무 마개 (L)	1	1	
A-6	D{K-CB000200		Rubber Cap (M)	고무 마개 (M)	5	5	
A-7	CMB-LA004300		Thread Take-up Lever Cover	실채기 커버	1	1	
A-8	DSC-BF000600		Screw [3/16" n=28]	실채기 커버 침나사	14	14	
A-9	CMB-LA011200		Rear Cover	뒷뚜껑	1	1	
A-10	CMB-FC004100		Rear Cover Gasket	뒷뚜껑 가스켓	1	1	
A-11	DTC-AH000200		Cord Holder "A"	코드 잡이"A"	1	1	
A-12	CMB-LA010701		Motor Cover	모터 커버	1	1	
A-13	PSC-AC006100		Screw [M5, L=15]	모터 커버 침나사	5	5	
A-14	CMB-BB006200		Bed Supporter-A	베드 다리-A	1	1	
A-15	DSC-BF000700		Screw [15/64" n=28, L=14]	베드 다리 침나사	2	2	
A-16	CMB-BB005900		Bed Supporter-B	베드 다리-B	1	1	
A-17	CMB-BJ002400		Guage Plate	게이지 부착판	1	1	
A-18	DSC-BC000100		Screw [11/64" n=40]	침판 침나사	3	3	
A-19	CMB-LB004400		Slide Plate Ass'y	미끄럼판 (조)	1	1	
A-20	CGA-GA000201		Needle Plate (A-Type, 3 row)	침판 (A형)	1		Jun.18.12
A-22	CGA-GA001200		Needle Plate (BH-Type, 4 row)	침판 (마그린)		1	
A-23	GP-044024-00		Rubber Cap	바늘대 상봇싱 고무마개	1	1	Mar.25.09
A-24	DPK-CB000801		Rubber Cap (S)	고무 마개 (S)	3	3	Aug.22.11
A-25	01-037R-1230		Rubber Cap	고무 마개	1	1	
A-26	CMB-HK002000		Upper Thread Guide Pin	실안내봉	1	1	
A-27	DSN-AA000100		Nut [11/64" n=40]	너트	1	1	
A-28	AS-001571-00		Sub Upper Thread Tension Control Ass'y	보조 실조절 장치 (조)	1		
A-29	ATA-PS002401		Sub Upper Thread Tension Control Ass'y-Heavy	보조 실조절 장치(조) : 후물용		1	
A-30	DSC-CA001600		Screw [11/64" n=40]	보조 실조절 장치 고정나사	1	1	
A-31	CMB-HK000501		Arm Thread Guide	암 실안내	1	1	Dec.19.11
A-32	DSC-BA000100		Screw [9/64" n=40]	실안내 침나사	2	2	
A-33	ATA-PS001300		Thread Tension Control Ass'y	실조절 장치 (조)	1		
A-34	ATA-PS001301		Thread Tension Control Ass'y (Heavy)	실조절 장치 (조) : 후물용		1	
A-35	DPK-CZ000200		Cap for Tension Release Pin	누유방지용 캡	1	1	
A-36	08-001S-1230		Screw [15/64" n=28]	실조절 장치 고정나사	1	1	
A-37	CMB-HK001901		Face Plate Thread Guide	면판 실안내	1	1	Dec.19.11
A-38	GP-006209-00		Model Mark (KM-2310G)	모델 마크 (KM-2310G)	1		
A-39	GP-006210-00		Model Mark (KM-2310B)	모델 마크 (KM-2310B)		1	
A-41	01-035P-7400		Pin	기번판 핀	4	4	
A-42	CMB-LD001000		Caution Label	주의 라벨	1	1	
A-44	01-035P-1370		Machine Number Plate	기번판	1	1	
A-45	CLB-BJ001701		Timing Pulley-Lower Oil Cover	타이밍풀리-하 오일커버	1	1	Jul.23.12
A-46	DSC-BJ001400		Screw [9/64" n=40]	고정나사	2	2	
A-47	CMB-BB006400		Safety Switch Base	안전 스위치 베이스	1	1	
A-48	CMB-BJ004200		Safety Switch Plate	안전 스위치판	1	1	
A-49	DSP-AC004300		Safety Switch Spring	안전 스위치 스프링	1	1	
A-50	DSC-FA012200		Safety Switch Hinge Screw	안전 스위치 단나사	1	1	
A-51	GP-001858-00		Safety Switch	안전 스위치	1	1	
A-52	SC-000174-00		Screw [M2, L=12]	안전 스위치 침나사	2	2	
A-53	CMB-BJ003800		Safety Switch Sub Bracket	안전 스위치 보조브라켓	1	1	
A-54	DSC-BF003600		Screw [11/64" n=40]	안전 스위치 베이스 침나사	2	2	
A-55	DPK-CB002400		Rubber	베드 고무 마개	1	1	
A-56	DWS-AA003800		Washer	와셔	2	2	
A-57	GP-009821-00		Warning Sticker A	경고 스티커 A	1	1	
A-58	DSC-BB003600		Screw [15/64" n=28]	베드다리 접시머리나사	2	2	

A

Machine Body Mechanism

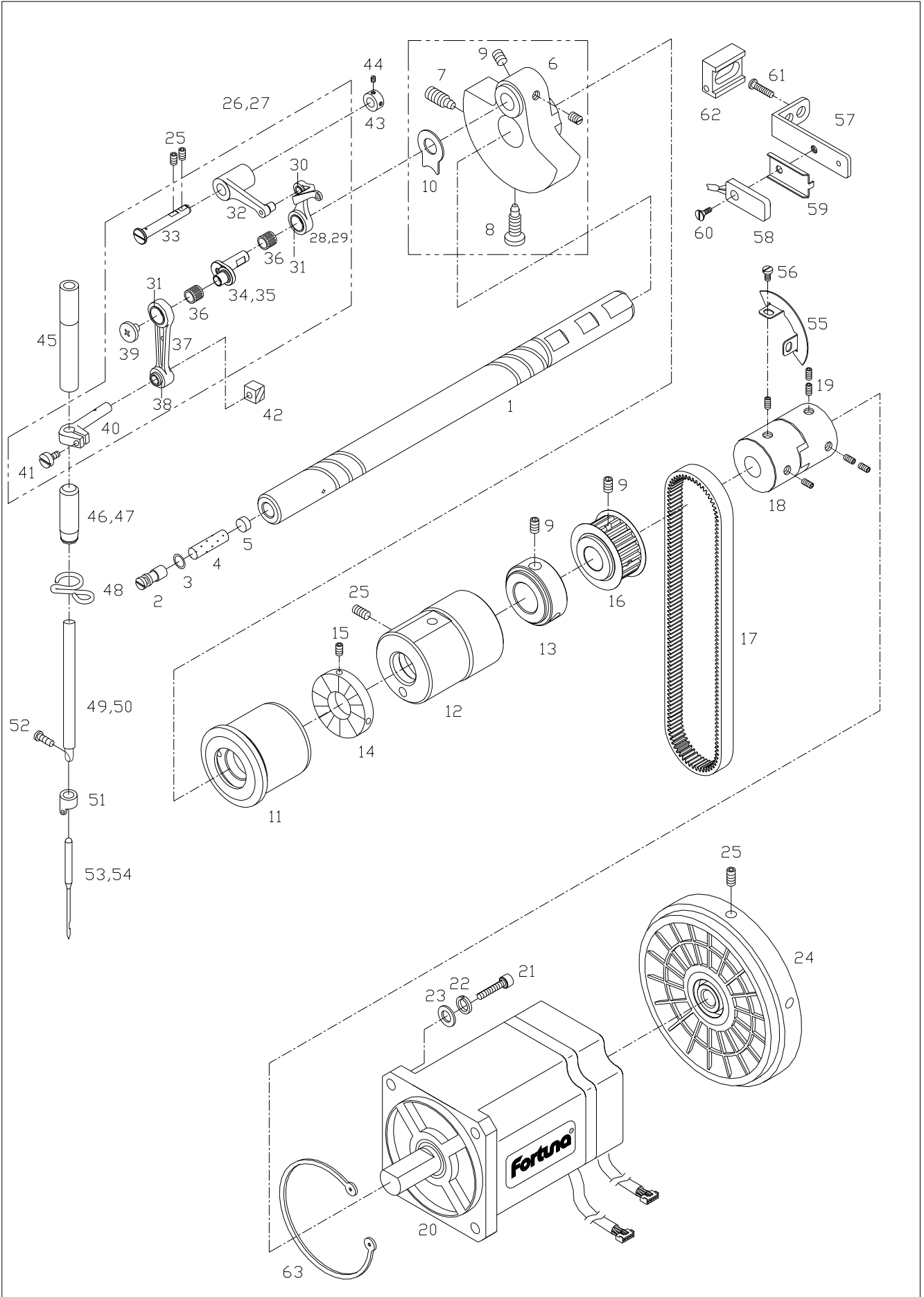
외장 관계



B

Upper Shaft & Needle Bar Mechanism

상축, 실채기, 바늘대 관계



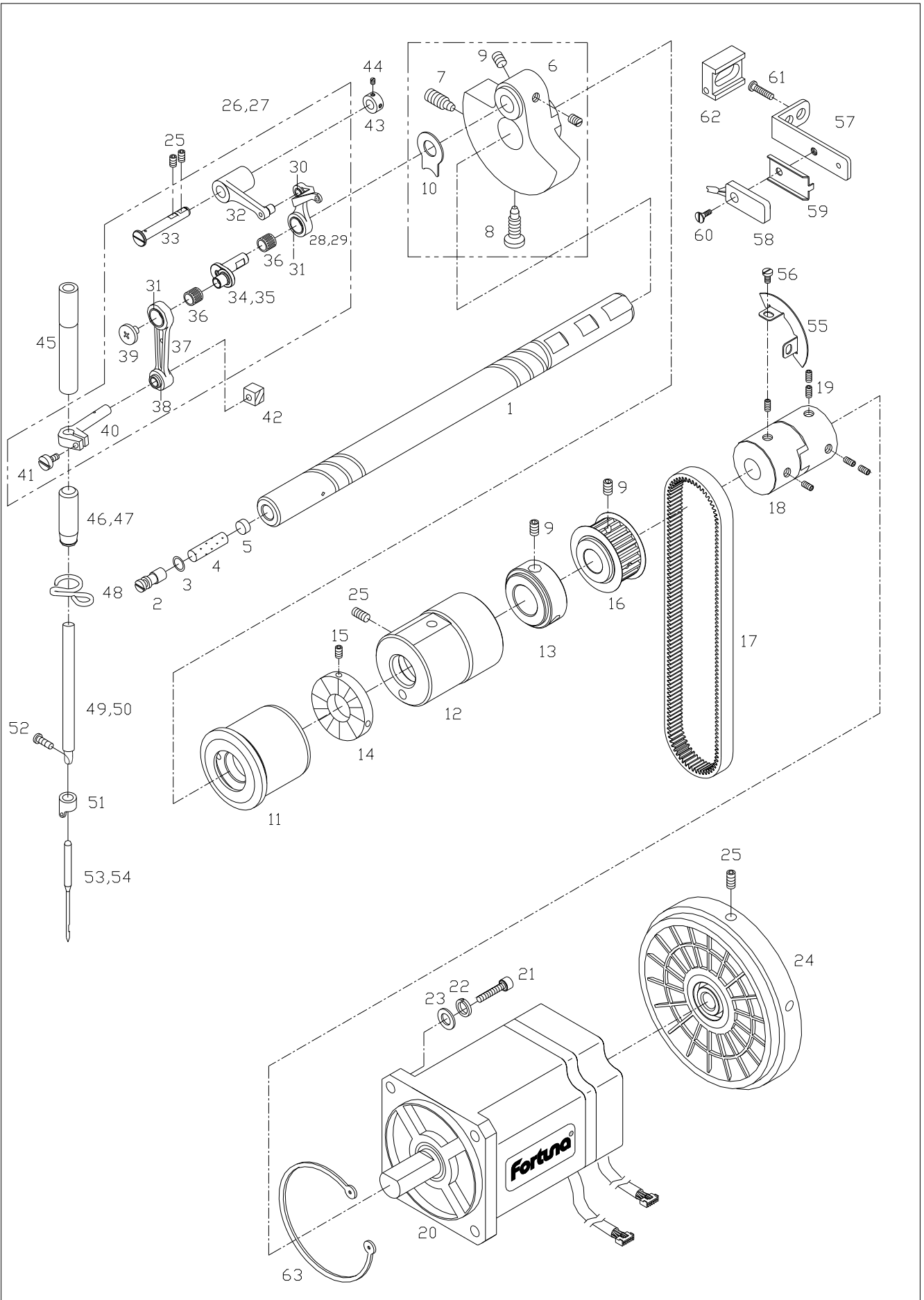


Ref. No.	Parts No.	Note	Name of Parts	품 명	Q'ty		Applied Period
					G	B	
B-1	CUS-KC001500		Upper Shaft	상축	1	1	
B-2	GP-034537-01		Oil Adjusting Pin	상축유량조절핀	1	1	
B-3	PPK-BA000400		O-Ring	상축유량조절핀 O링	1	1	
B-4	CLB-JL001600		Upper Shaft Felt	상축펠트	1	1	
B-5	CUS-FA000100		Oil Adjusting Rubber	상축유량조절고무	1	1	
B-6	CUS-DA001400		Link Cam	링크캠	1	1	
B-7	DSC-BF003700		Screw (A) [9/32" n=28, L=16]	링크캠 고정나사 (A)	1	1	
B-8	DSC-CA002100		Screw (B) [9/32" n=28, L=16]	링크캠 고정나사 (B)	1	1	
B-9	DSC-CB000400		Screw [1/4" n=40, L=6]	고정 나사	8	8	
B-10	CUS-BJ001000		Link Cam Protection Plate	링크캠 접촉판	1	1	
B-11	DBS-DB004000		Upper Shaft Bushing(Front)	상축전봇싱	1	1	
B-12	DBS-DA015000		Upper Shaft Bushing(Middle)	상축중봇싱	1	1	
B-13	DCL-AA005600		Upper Shaft Collar	상축카라	1	1	
B-14	CUS-CF000400		Bobbin Winder Driving Wheel	실감기 구동 휠	1	1	
B-15	DSC-CA000600		Screw [11/64" n=40, L=4]	실감기 구동 휠 고정나사	2	2	
B-16	DPL-BF000200		Timing Pulley-Upper (T5)	타이밍폴리-상 (T5)	1	1	
B-17	PBT-BF000200		Timing Belt(150-T5-550)	타이밍 벨트(우레탄, T5)	1	1	
B-18	PCR-AD000200		Coupling	커플링	1	1	
B-19	PSC-CB000100		Screw [M6, L=8]	커플링 고정나사	6	6	
B-20	SFAM-500-002		Motor-Hollow	모터-양축	1	1	
B-21	PSC-AC000100		Screw [M5, L=25]	모터침나사	4	4	
B-22	DWS-CA000100		Spring Washer	모터고정나사 스프링와셔	4	4	
B-23	DWS-AA000600		Washer	모터고정나사 와셔	4	4	
B-24	CUS-CP000401		Pulley	폴리	1	1	
B-25	DSC-CB000500		Screw [15/64" n=28, L=7.5]	폴리 고정나사	4	4	
B-26	AS-001731-00		Thread Take-up Lever Ass'y (General)	실채기(조) [일반용]	1		
B-27	AS-001732-00		Thread Take-up Lever Ass'y (Heavy)	실채기(조) [후물용]		1	
B-28	GP-002164-00		Thread Take-up (General)	실채기(일반용)	1		
B-29	CTH-HJ001400		Thread Take-up (Heavy)	실채기(후물용)		1	
B-30	DBS-DA014800		Thread Take-up Bushing	실채기 연결봇싱	1	1	
B-31	08-512A-250U		Bearing Bushing	베어링 연결봇싱	2	2	
B-32	CTH-CB001100		Thread Take-up Crank	실채기 크랭크	1	1	
B-33	DPN-AD007300		Thread Take-up Crank Shaft	실채기 크랭크축	1	1	
B-34	GP-002167-00		Needle Bar Crank(General)	바늘대 크랭크(일반용)	1		
B-35	CTH-CJ001000		Needle Bar Crank(Heavy)	바늘대 크랭크(후물용)		1	
B-36	PBR-BA000600		Bearing	나이들 베어링	2	2	
B-37	CTH-CC000900		Needle Bar Crank Rod	바늘대 크랭크 로드	1	1	
B-38	DBS-DA012900		Needle Bar Crank Rod Bushing	바늘대 크랭크 로드 봇싱	1	1	
B-39	DSC-BF001600		Screw [9/64" n=40]	바늘대 크랭크 원나사	1	1	
B-40	CNB-BF001200		Needle Bar Holder	바늘대 잡이	1	1	
B-41	DSC-BA001000		Screw [9/64" n=40]	바늘대 잡이 침나사	1	1	
B-42	CNB-BK000800		Slide Block	바늘대 안내 블록	1	1	
B-43	DCL-AA000500		Thrust Collar[D=φ7.94, W=8]	실채기 크랭크축 카라	1	1	
B-44	DSC-BA000300		Screw [11/64" n=40]	실채기 크랭크축 카라 고정나사	2	2	
B-45	DBS-DA012600		Needle Bar Bushing, Upper	바늘대 상봇싱	1	1	
B-46	DBS-DA013000		Needle Bar Bushing, Lower (General)	바늘대 하봇싱(일반용)	1		
B-47	DBS-DA014900		Needle Bar Bushing, Lower (Heavy)	바늘대 하봇싱(후물용)		1	
B-48	CNB-BH000100		Thread Guide for Needle Bar Bushing	바늘대 하봇싱 실안내	1	1	
B-49	CNB-KA001301		Needle Bar (General)	바늘대(일반용)	1		Aug.06.12
B-50	CNB-KA001400		Needle Bar (Heavy)	바늘대(후물용)		1	
B-51	CNB-HK000400		Needle Bar Thread Guide	바늘대 실안내	1	1	
B-52	DSC-BF000100		Screw [1/8" n=44]	바늘 고정나사	1	1	
B-53	-		Needle (DB×1 #14)	바늘(일반용)	1		
B-54	-		Needle (DB×1 #21)	바늘(후물용)		1	
B-55	CUS-BJ000900		Sync. Sensor Slit	센서 감지판	1	1	
B-56	DSC-BA002400		Screw [M6]	센서 감지판 침나사	2	2	

B

Upper Shaft & Needle Bar Mechanism

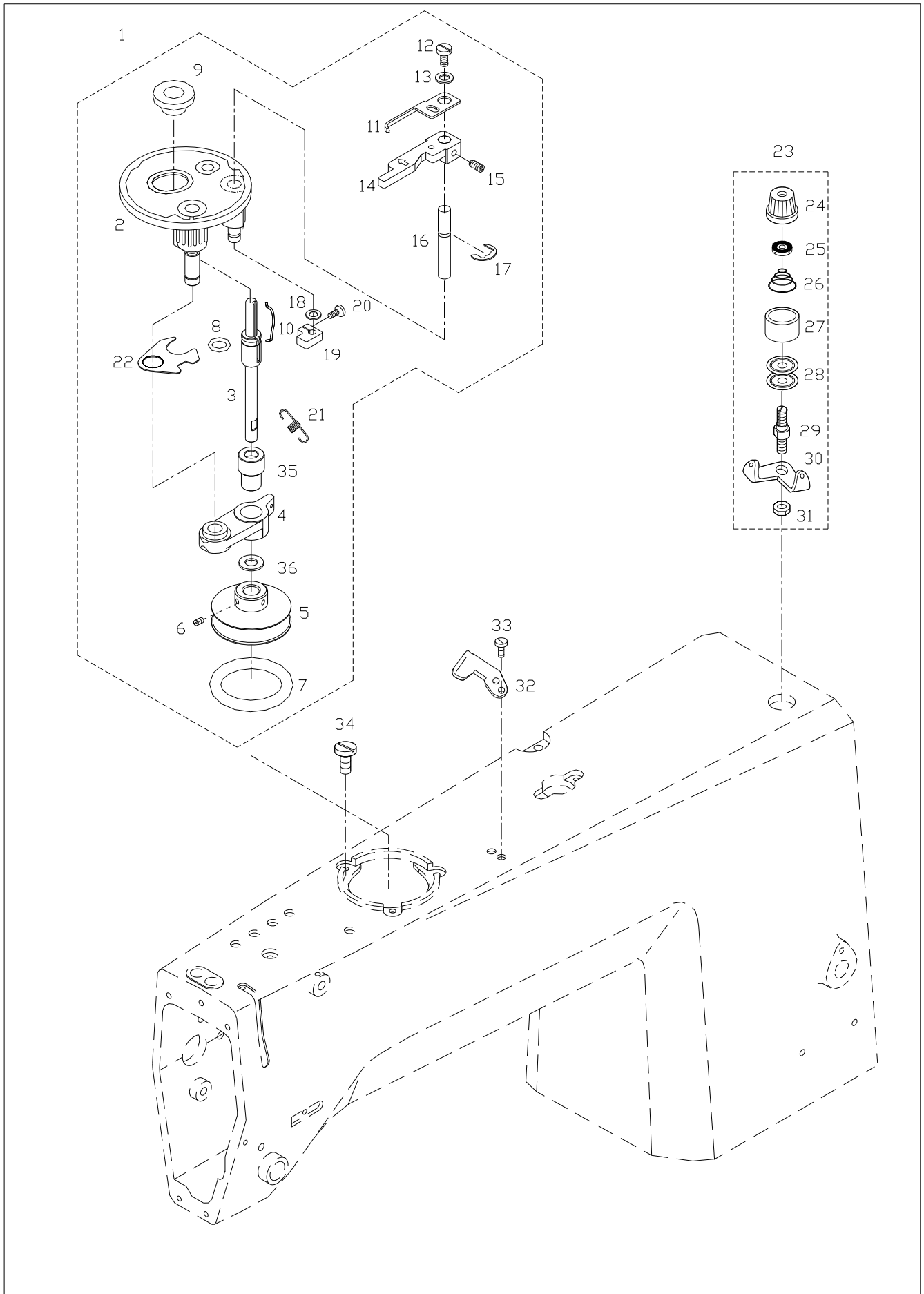
상축, 실채기, 바늘대 관계



C

Thread Winder Mechanism

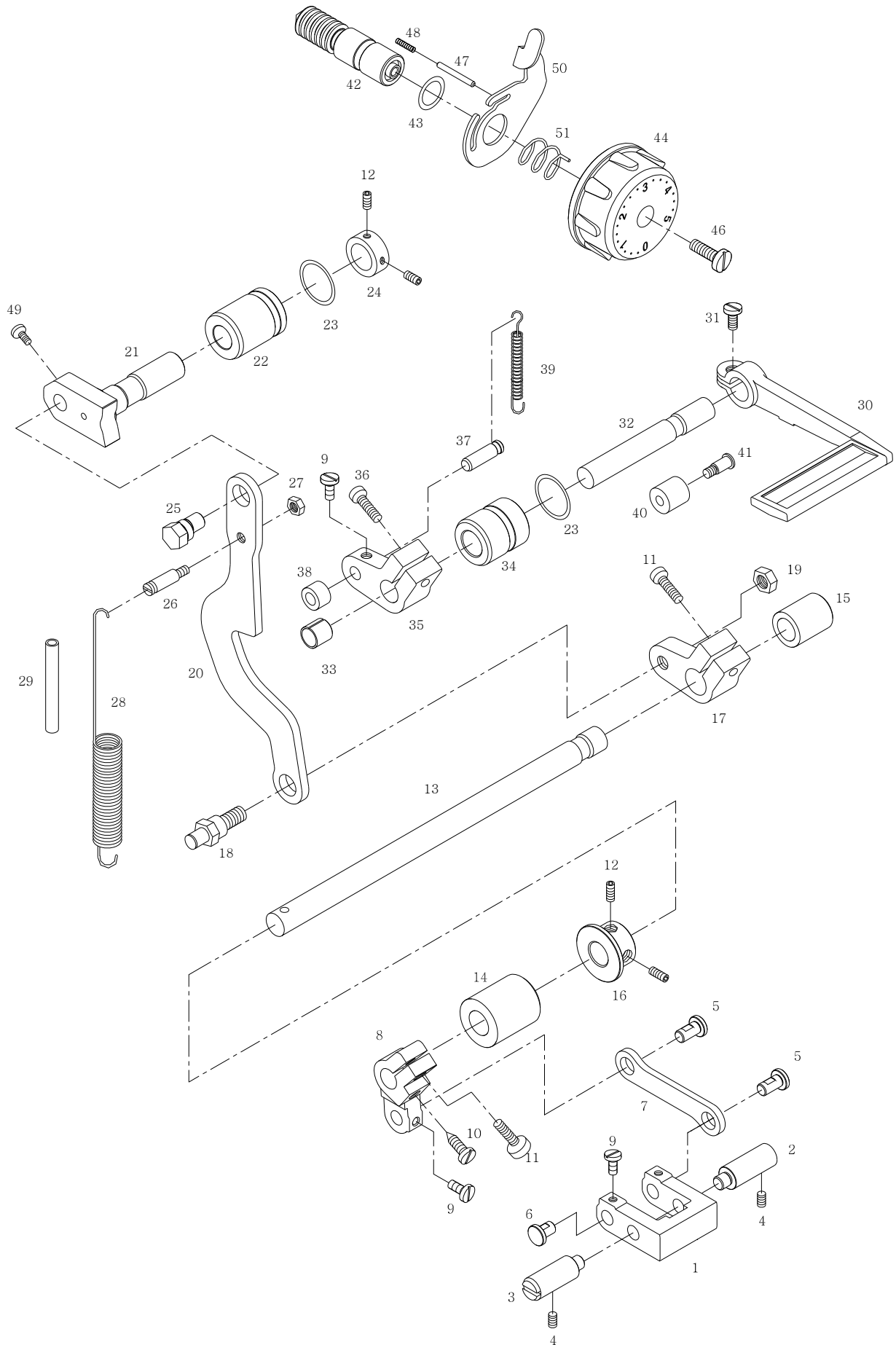
실감기 관계

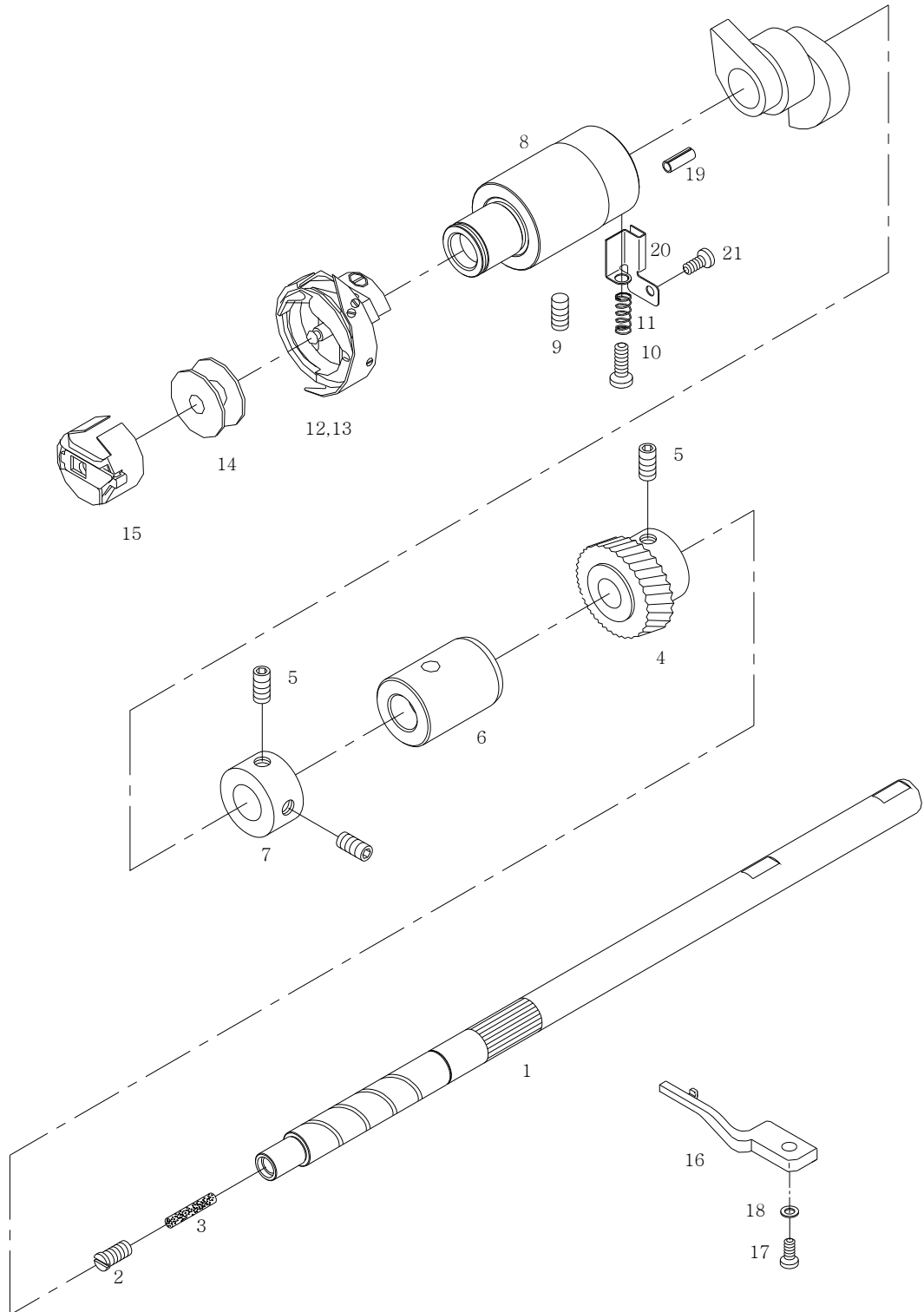


D

Feed Adjusting Mechanism

피이드 조절 관계

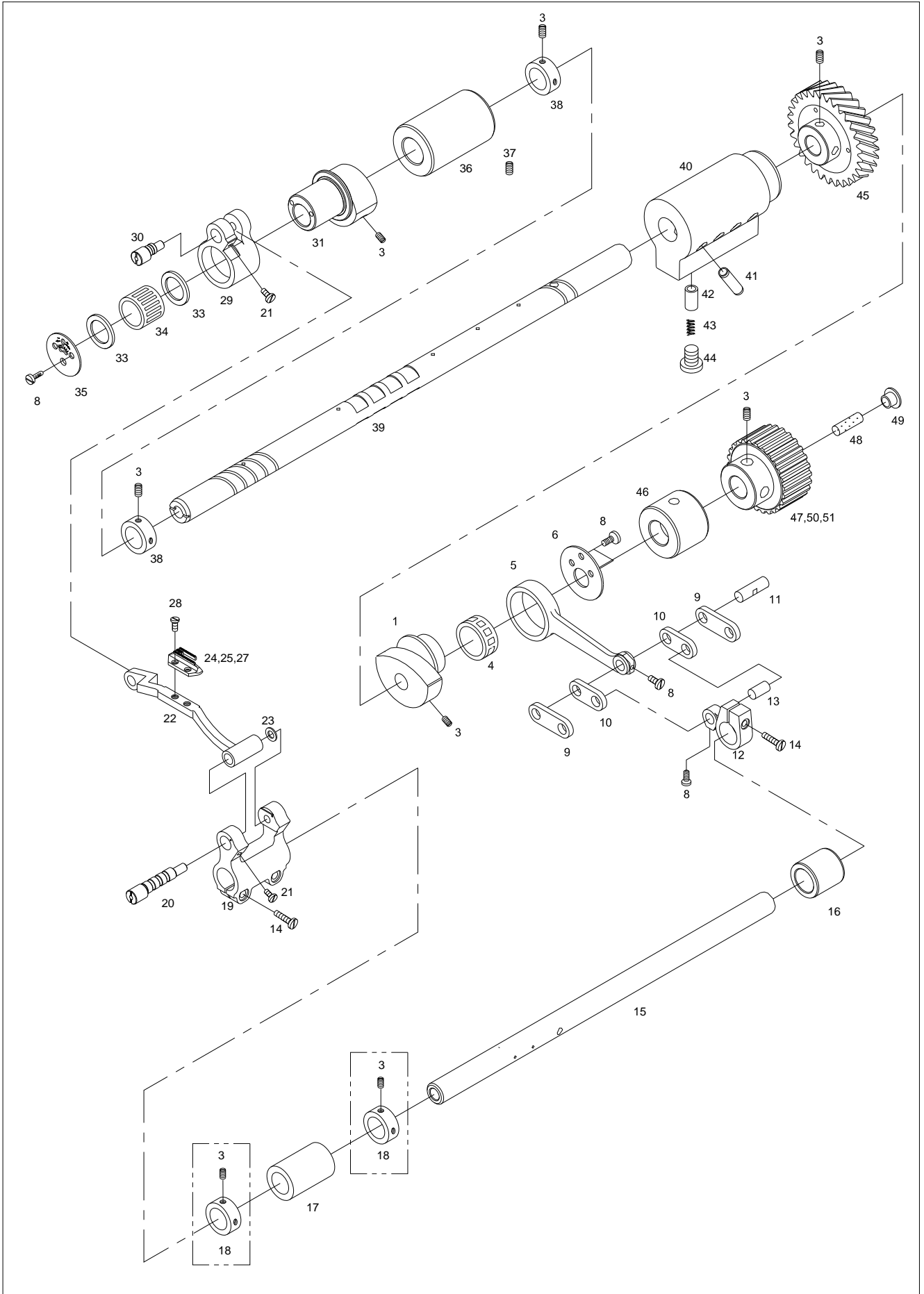




F

Feed Mechanism

피이드 관계



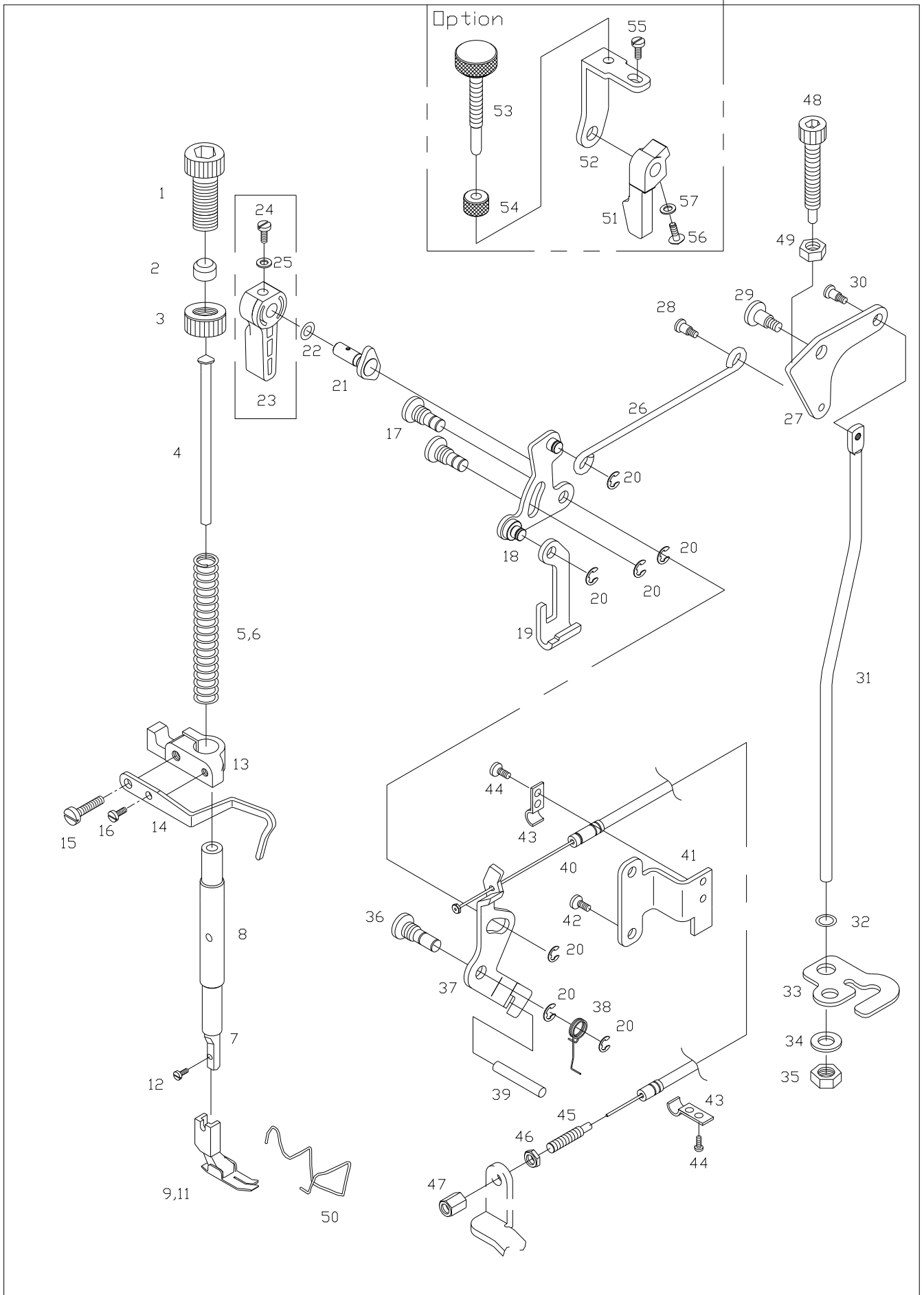


Ref. No.	Parts No.	Note	Name of Parts	품명	Q'ty		Applied Period
					G	B	
F-1	CLF-DC000500		Feed Cam	피이드 캠	1	1	
F-3	DSC-CB000400		Screw [1/4"n=40, L=6]	칩나사	14	14	
F-4	PBR-BA001000		Needle Bearing [KT252910]	피이드 캠 베어링	1	1	
F-5	CLF-CC000600		Feed Cam Connecting Rod	피이드 캠 연결로드	1	1	
F-6	CLF-BJ001100		Feed Cam Plate	피이드 캠 베어링 커버	1	1	
F-8	DSC-BJ001400		Screw [9/64"n=40]	베어링커버 칩나사	4	4	
F-9	CLF-CA000600		Connecting Link, A	피이드 연결링크 A	2	2	
F-10	CLF-CA000700		Connecting Link, B	피이드 연결링크 B	2	2	
F-11	DPN-AA007900		Feed Cam Connecting Rod Pin	피이드 캠 연결로드핀	1	1	
F-12	CLF-CB001100		Feed Rocker Crank	수평밀대 크랭크	1	1	
F-13	DPN-AA008000		Feed Rocker Crank Pin	수평밀대 크랭크핀	1	1	
F-14	DSC-BF012200		Screw [3/16"n=28, L=15.5]	크랭크 칩나사	3	3	
F-15	CLF-KD000200		Feed Rocker Shaft(Micro Lubriction)	수평밀대(미세급유)	1	1	
F-16	DBS-DA013800		Feed Rocker Shaft Bushing(Rear)	수평밀대 후붓심	1	1	
F-17	DBS-DA013900		Feed Rocker Shaft Bushing(Front)	수평밀대 전붓심	1	1	
F-18	DCL-AA004900		Feed Rocker Shaft Collar	수평밀대 카라	2	2	
F-19	CLF-CB000900		Feed Bar Crank	톱니받침 크랭크	1	1	
F-20	CLF-KG000200		Feed Bar Crank Eccentric Shaft A	톱니받침 크랭크 편심축 A	1	1	
F-21	DSC-BA001000		Screw [11/64"n=40]	편심축 고정나사	2	2	
F-22	CLF-BC000100		Feed Bar	톱니받침	1	1	
F-23	DWS-AA011400		Washer [φ7.1×φ11×1]	톱니받침 크랭크 와셔	1	1	
F-24	CGA-GB000501		Feed Dog (General, 3 row)	톱니	1		
F-25	06-007A-257A		Feed Dog (General, 4 row)	톱니	(1)		
F-27	CGA-GB001200		Feed Dog (Heavy, 4 row)	톱니		1	
F-28	DSC-BF001800		Screw [1/8"n=44, L=6]	톱니 칩나사	2	2	
F-29	CLF-CB001000		Feed Lifting Crank	들대 크랭크	1	1	
F-30	CLF-KH000200		Feed Lifting Crank Eccentric Shaft A	들대 크랭크 편심축 A	1	1	
F-31	CLF-DC000700		Feed Lifting Cam	들대캠	1	1	
F-33	DWS-AA011300		Feed Lifting Cam Thrust Guide	들대캠 가이드	2	2	
F-34	PBR-AA007500		Needle Bearing [KT 202417]	들대캠 베어링	1	1	
F-35	CLF-LA000100		Feed Lifting Cam Plate	들대캠 베어링 커버	1	1	
F-36	DBS-DA015300		Feed Lifting Shaft Bushing(Front)	들대 전붓심	1	1	
F-37	DSC-CA000100		Screw [15/64"n=28]	들대 전붓심 고정나사	1	1	
F-38	DCL-AA000301		Feed Lifting Shaft Collar	들대 카라	2	2	May.22.12
F-39	CLF-KC000700		Feed Lifting Shaft	들대	1	1	
F-40	CLB-JC000501		Feed Lifting Shaft Bushing(Middle) Pump	들대중붓심펌프	1	1	Oct.11.12
F-41	CLB-JF000100		Nipple	니플	4	4	
F-42	CLB-CN000300		Piston	피스톤	4	4	
F-43	DSP-AA006300		Piston Spring	피스톤 스프링	4	4	
F-44	DSC-BF012700		Piston Cap Screw	피스톤 마개나사	4	4	
F-45	DGR-AB001000		Feed Lifting Gear Ass'y	들대 기어(조)	1	1	
F-46	DBS-DA015400		Feed Lifting Shaft Bushing(Rear)	들대 후붓심	1	1	
F-47	DPL-BF000300		Timing Pulley-Lower (T5)	타이밍 풀리-하 (T5)	1	1	Mar.25.09
F-48	CLB-JL001600		Feed Lifting Shaft Felt	들대 헬트	1	1	
F-49	DPK-CB002500		Rubber Cap for Feed Lifting Shaft	들대 유심 마개	1	1	
F-50	DPL-BF000400		Timing Pulley-Lower A (T5)	타이밍 풀리-하 A (T5)	1	1	Mar.19.11
F-51	DPL-BF000500		Timing Pulley-Lower B (T5)	타이밍 풀리-하 B (T5)	1	1	Mar.19.11

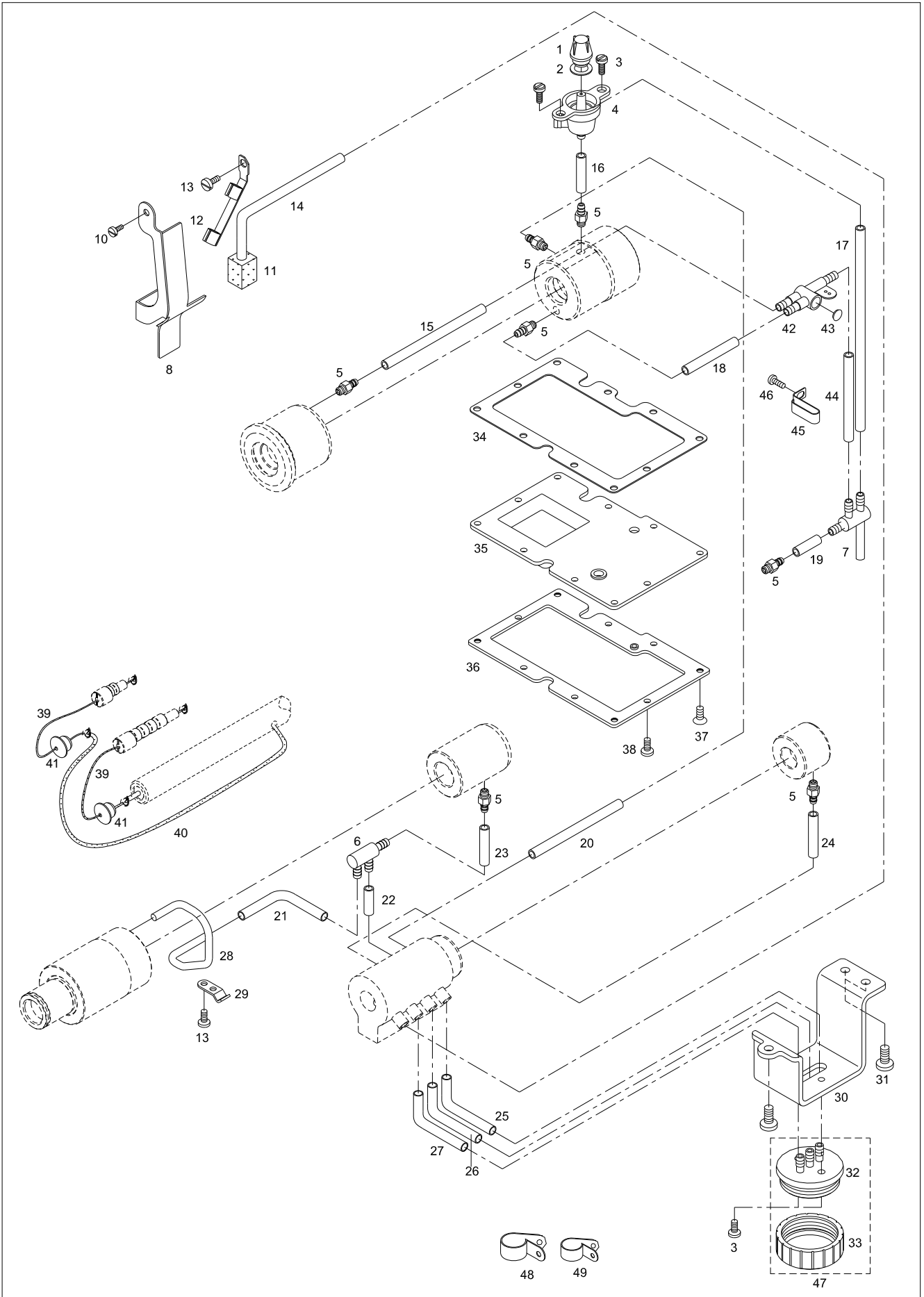
*01 : Selective Part (선택부품)

Presser Foot & Tension Release Mechanism

노루발 및 실넛추기 관계

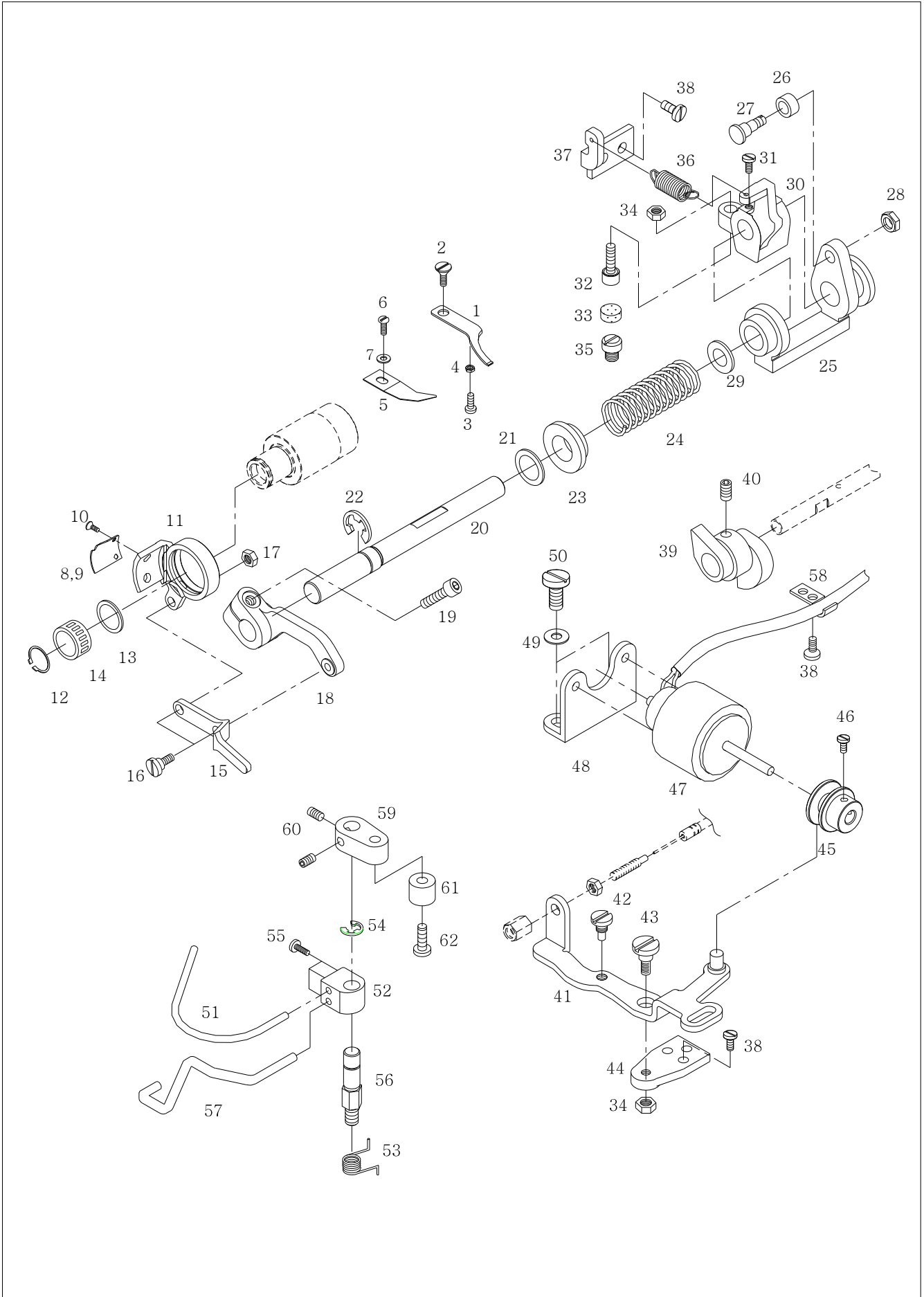


Ref. No.	Parts No.	Note	Name of Parts	품 명	Q'ty		Assembly No.
					G	B	
G-1	DSC-HA000100		Presser Adjusting Screw [9/16"n=20]	압력 조절 나사	1	1	
G-2	DCL-BA000900		Spacer for Presser Adjusting Screw	압력 조절나사 스페이서	1	1	
G-3	DSN-CC000100		Nut [9/16"n=20]	압력 조절나사 너트	1	1	
G-4	CPB-KC000300		Presser Guide Bar	압력 조절봉	1	1	
G-5	DSP-AA001700		Presser Spring	압력 조절 스프링	1		
G-6	DSP-AA006200		Presser Spring(Heavy)	압력 조절 스프링(후물용)		1	
G-7	CPB-KB000700		Presser Bar	누름대	1	1	
G-8	DBS-DA014000		Presser Bar Bushing	누름대 붓싱	1	1	
G-9	CGA-GC000701		Presser Foot Ass'y (General)	노루발(일반용)	1		
G-11	CGA-GC001900		Presser Foot Ass'y (Heavy-4row)	노루발(후물용-4매치)		1	
G-12	DSC-BA000200		Screw [9/64"n=40, L=10.5]	노루발 집나사	1	1	
G-13	CPB-BF000400		Presser Bar Guide Bracket	누름대 잡이	1	1	
G-14	CPB-BJ000700		Thread Guide Plate	실결이판	1	1	
G-15	DSC-BF001200		Screw A [11/64"n=40, L=18]	누름대 잡이 집나사 A	1	1	
G-16	DSC-BF010100		Screw B [9/64"n=40, L=9]	누름대 잡이 집나사 B	1	1	
G-17	DSC-FH000300		Hinge Screw [5/16"n=24]	누름대 올리기 링크 힌지나사	2	2	
G-18	APM-PS000700		Presser Bar Lifter Link Ass'y	누름대 올리기 링크(조)	1	1	
G-19	CPM-CM000900		Presser Bar Lifter Lever	누름대 올림 레버	1	1	
G-20	PSR-AC000200		E-Ring [φ5]	E 링	7	7	
G-21	CPB-DF000300		Presser Lifter Cam Shaft	누름대 올리기 캠축	1	1	
G-22	PPK-BA000400		O-Ring	O-링	1	1	
G-23	CPB-CM000300		Presser Lifter	누름대 올리기	1	1	
G-24	DSC-BJ000300		Screw [9/64"n=40]	누름대 올리기 고정나사	1	1	
G-25	DWS-AA003800		Washer	누름대 올리기 와셔	1	1	
G-26	CPM-BH000600		Presser Lifter Connect Bar	누름대 올리기 연결봉	1	1	
G-27	CPM-CA001000		Knee Lifting Link	무릎 올림 링크	1	1	
G-28	DSC-FC000100		Hinge Screw	누름대 올리기 연결봉 힌지나사	1	1	
G-29	DSC-FA006000		Hinge Screw	무릎 올림 링크 힌지나사	1	1	
G-30	DSC-FA000700		Hinge Screw	무릎 올림봉 힌지나사	1	1	
G-31	CPM-CR000400		Knee Lifting Bar	무릎 올림봉	1	1	
G-32	PPK-BA000300		O-Ring (P5)	무릎 올림봉 O-링	1	1	
G-33	CPM-BJ001000		Knee Lifting Bar Guide	무릎 올림봉 가이드 판	1	1	
G-34	PWS-CA000400		Spring Washer	무릎 올림봉 가이드 판 와셔	1	1	
G-35	DSN-AA002300		Nut [5/16"n=28]	무릎 올림봉 가이드 판 너트	1	1	
G-36	DSC-FH000401		Hinge Screw [5/16"n=24]	실늑추기 판 힌지나사	1	1	
G-37	CTR-CM000800		Thread Tension Release Plate	실늑추기 판	1	1	
G-38	DSP-AC002100		Thread Tension Release Return Spring	실늑추기 판 스프링	1	1	
G-39	DPN-AA008300		Thread Tension Release Supporting Pin	실늑추기 핀	1	1	
G-40	GP-021212-00		Thread Tension Release Wire	실늑추기 케이블	1	1	
G-41	CTR-BB000700		Wire Holder Bracket	실늑추기 케이블잡이 브라켓	1	1	
G-42	DSC-BF008400		Screw [3/16"n=28, L=11]	실늑추기 케이블잡이 브라켓 집나사	2	2	
G-43	DTC-AH000800		Wire Holder	실늑추기 케이블잡이	2	2	
G-44	DSC-BF000600		Screw [3/16"n=28]	실늑추기 케이블잡이 집나사	4	4	
G-45	DSC-HZ001100		Cable Connecting Bolt	케이블 연결 볼트	1	1	
G-46	DSN-AA002400		Cable Connecting Nut A [3/16"n=32]	케이블 연결 너트 A	1	1	
G-47	PSN-AA001700		Cable Connecting Nut B [3/16"n=32]	케이블 연결 너트 B	1	1	
G-48	DSC-AC000400		Bolt [M6]	노루발 미세 조정 볼트	1	1	
G-49	PSN-AA001400		Nut [15/64"n=28]	노루발 미세 조정 너트	1	1	
G-50	CPB-BH000600		Finger Guard	안전가이드	1	1	
G-51	GP-001045-00		Presser Foot Lifter-A	누름대 올리기-A	(1)	(1)	
G-52	GP-001046-00		Presser Foot Minute Lifting Base	노루발 미세 상승 베이스	(1)	(1)	
G-53	SC-000095-00		Presser Foot Minute Lifting Control Screw	노루발 미세 상승 조정 나사	(1)	(1)	
G-54	SN-000014-00		Presser Foot Minute Lifting Control Nut	노루발 미세 상승 조정 너트	(1)	(1)	
G-55	DSC-BF008400		Screw [3/16"n=28, L=11]	노루발 미세 상승 베이스 집나사	(1)	(1)	
G-56	DSC-BJ000300		Screw [9/64"n=40]	누름대 올리기 고정나사	(1)	(1)	
G-57	DWS-AA003800		Washer	누름대 올리기 와셔	(1)	(1)	



Thread Trimmer Mechanism

사절 관계

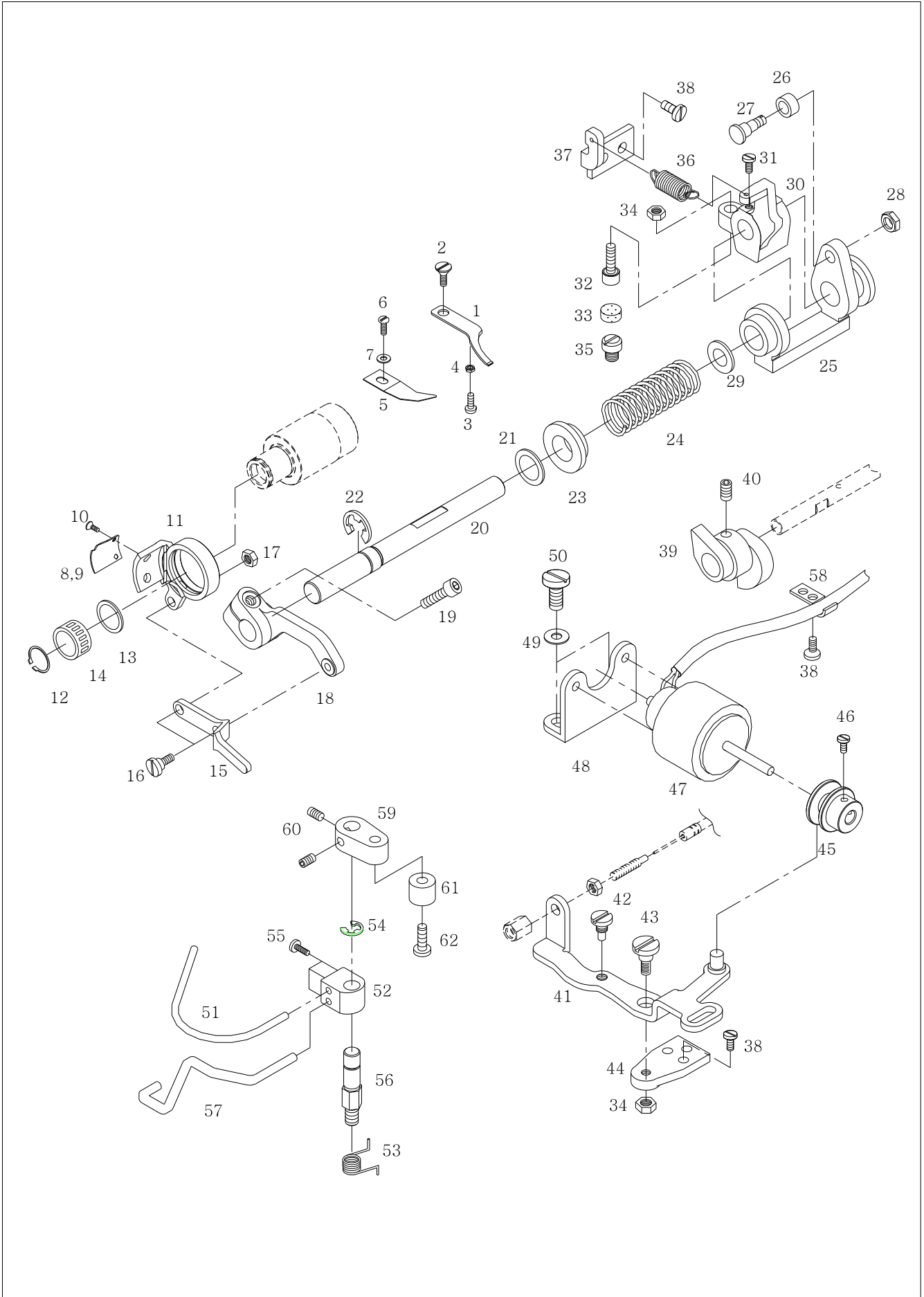




Ref. No.	Parts No.	Note	Name of Parts	품 명	Q'ty		Assembly No.
					G	B	
I-1	CTT-NB001100		Fixed Mes	고정메스(극잔사용)	1	1	
I-2	DSC-BB002000		Screw [9/64" n=40]	고정메스 찰나사	1	1	
I-3	DSC-BF006200		Screw [1/8" n=40]	고정메스 장력조절 나사	1	1	
I-4	DSN-AA001700		Nut [1/8" n=40]	고정메스 장력조절 너트	1	1	
I-5	CTT-BJ001100		Thread Retaining Plate	실 가리개	1	1	
I-6	DSC-BJ000200		Screw [11/64" n=40]	실 가리개 찰나사	1	1	
I-7	DWS-AA001100		Washer	실 가리개 와셔	1	1	
I-8	CTT-NA000600		Rotary Mes	회전 메스 806013	1		
I-9	CTT-NA001000		Rotary Mes	회전 메스 7AN414		1	
I-10	DSC-BB001400		Screw [11/64" n=40]	회전 메스 찰나사	2	2	
I-11	CTT-BF001000		Thread Trimming Holder	사절 홀더	1	1	
I-12	PSR-AA000100		Stop-Ring	스냅 링	1	1	
I-13	10-010W-2700		Washer of Thread Trimming Holder	사절 홀더 와셔	1	1	
I-14	PBR-BA001200		Needle Bearing	니들 베어링	1	1	
I-15	CTT-CA000800		Thread Trimming Lever Connecting Link	사절레버 연결링크	1	1	
I-16	DSC-FA005600		Stud Screw [11/64" n=40]	사절레버 연결링크 단나사	2	2	
I-17	DSN-AA000900		Nut [11/64" n=40]	사절레버 연결링크 너트	1	1	
I-18	CTT-CM001100		Thread Trimming Lever	사절레버	1	1	
I-19	PSC-AC000600		Screw [M6]	사절레버 찰나사	1	1	
I-20	CTT-KF000400		Thread Timming Shaft	사절축	1	1	
I-21	DWS-AA005200		Washer	사절축 와셔	1	1	
I-22	PSR-AC000100		E-ring [φ9]	E-링	1	1	
I-23	DCL-BA000600		Return Spring Guide Bushing	리턴 스프링 가이드 붓싱	1	1	
I-24	DSP-AA005600		Slide Arm Return Spring	슬라이드 아암 리턴 스프링	1	1	
I-25	CTT-CM001900		Slide Arm	슬라이드 아암	1	1	
I-26	CTT-CL000300		Roller	로올러	1	1	
I-27	DSC-FA013400		Stud Screw	로올러 단나사	1	1	
I-28	DSN-AA000600		Nut [3/16" n=32]	로올러 단나사 너트	1	1	
I-29	CTT-FB000200		Cushion Washer	쿠션 고무 와셔	1	1	
I-30	CTT-CB000700		Cam Follower Crank	사절캠 종동 크랭크	1	1	
I-31	DSC-BJ002000		Screw [1/4" n=40]	사절캠 종동 크랭크 찰나사	2	2	
I-32	DSC-BF007200		Stopper Screw [15/64" n=28]	스토퍼 쿠션 나사	1	1	
I-33	CTT-FD000200		Cushion Rubber	스토퍼 쿠션 고무	1	1	
I-34	DSN-AA000400		Nut [15/64" n=28]	너트	2	2	
I-35	DSC-BF012400		Thread Trimmer Stopper Screw	사절 스토퍼 나사	1	1	
I-36	DSP-AB001000		Spring	사절캠 종동 크랭크 스프링	1	1	
I-37	CTT-BB000800		Spring Holder	스프링 걸이	1	1	
I-38	DSC-BF000600		Screw [3/16" n=28]	찰나사	6	6	
I-39	CTT-DF000200		Thread Trimming Cam	사절캠	1	1	
I-40	DSC-CB000400		Screw [1/4" n=40]	사절캠 고정나사	2	2	
I-41	CTT-CM001800		Clutch Lever Ass'y	클러치 레버 (조)	1	1	
I-42	DSC-FH000200		Stud Screw	클러치 레버 작동핀 나사	1	1	
I-43	DSC-FD001100		Clutch Lever Hinge Screw	클러치 레버 단나사	1	1	
I-44	10-129A-257A		Base Plate	베이스 판	1	1	
I-45	CTT-BK000100		Solenoid Block	솔레노이드 구동블럭	1	1	
I-46	DSC-BA001000		Screw [11/64" n=40]	솔레노이드 구동블럭 찰나사	2	2	
I-47	STT100-00001		Thread Trimming Solenoid Ass'y	사절 솔레노이드 (조)	1	1	
I-48	CTT-BB002000		Base for Thread Trimming Solenoid	사절 솔레노이드 베이스	1	1	
I-49	PWS-CA000500		Washer	사절 솔레노이드 베이스 와셔	2	2	
I-50	DSC-BF000700		Screw [15/64" n=28]	사절 솔레노이드 베이스 찰나사	2	2	
I-51	CTT-BH000500		Bobbin Stopper Lever	보빈 스토퍼 레버	1	1	
I-52	CTT-BF000200		Bobbin Stopper Holder	보빈 스토퍼 홀더	1	1	
I-53	DSP-AC001700		Bobbin Stopper Spring	보빈 압력 스프링	1	1	
I-54	PSR-AC000500		E-ring [φ6]	E-링 [φ6]	1	1	
I-55	DSC-BF000100		Screw [1/8" n=44]	고정나사	4	4	
I-56	DSC-HC000800		Hinge Screw [15/64" n=28]	보빈 스토퍼 단나사	1	1	

Thread Trimmer Mechanism

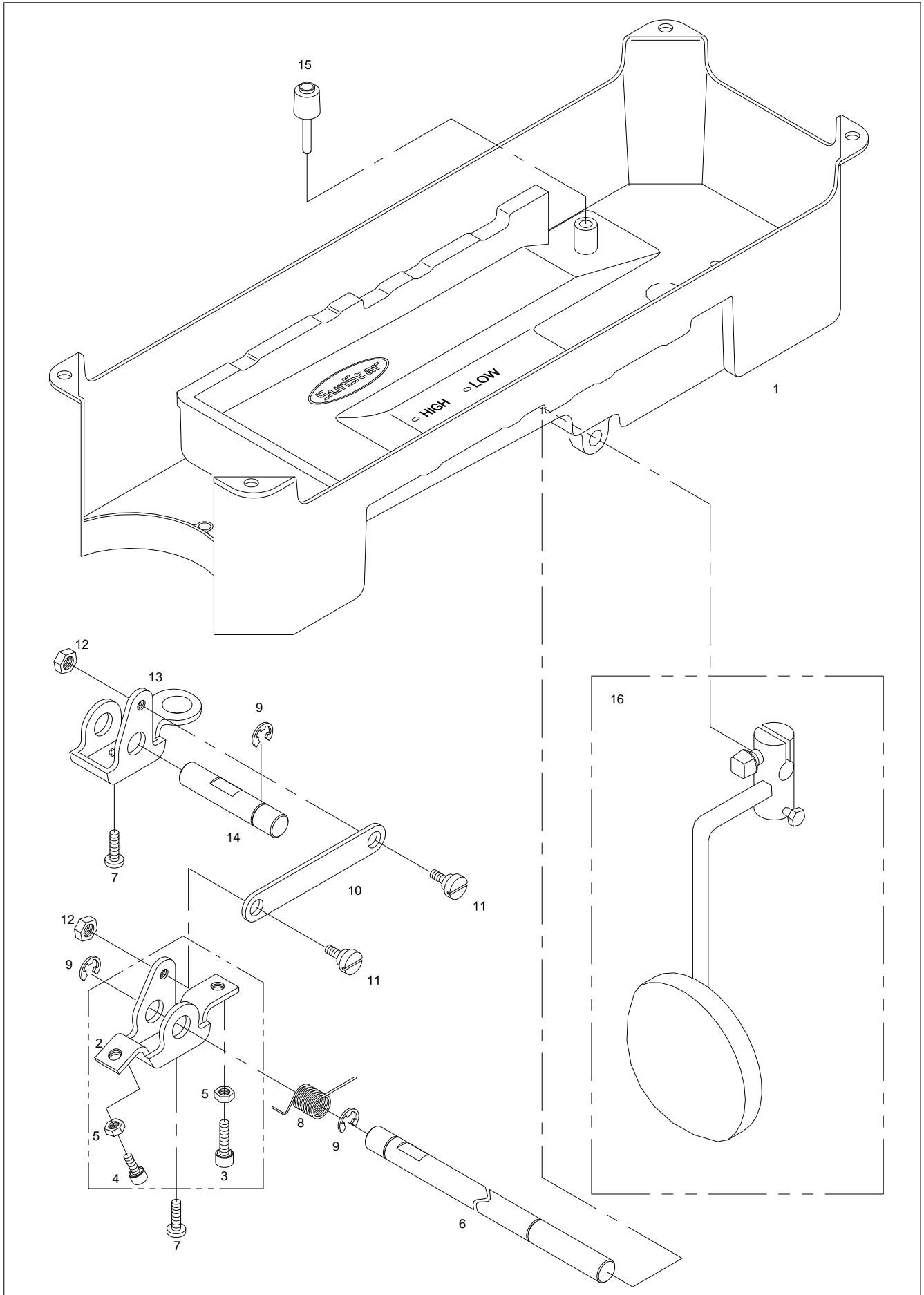
사절 관계



J

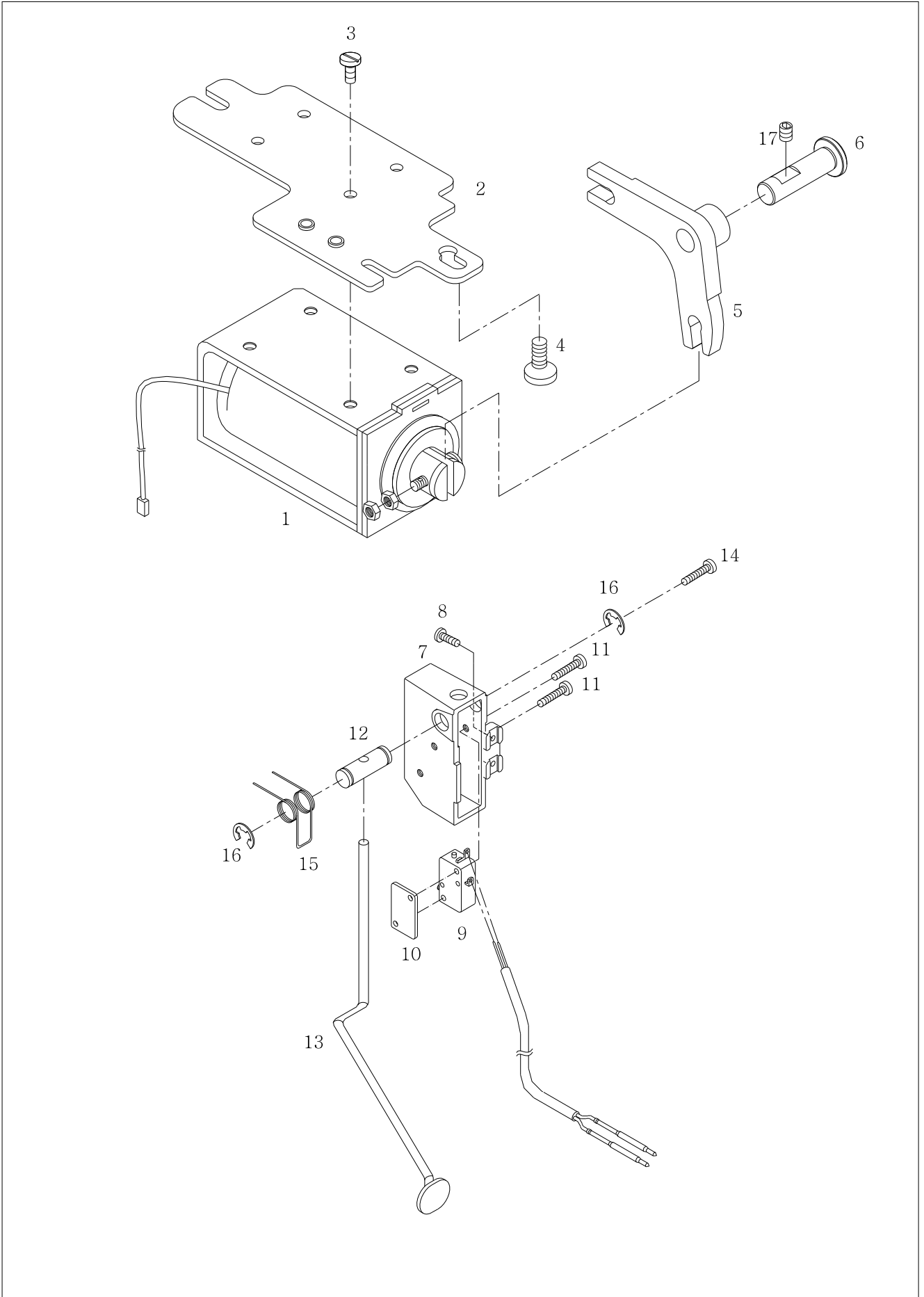
Oil Pan & Knee Lifting Mechanism

오일팬 및 무릎올림 관계



Reverse Button Mechanism

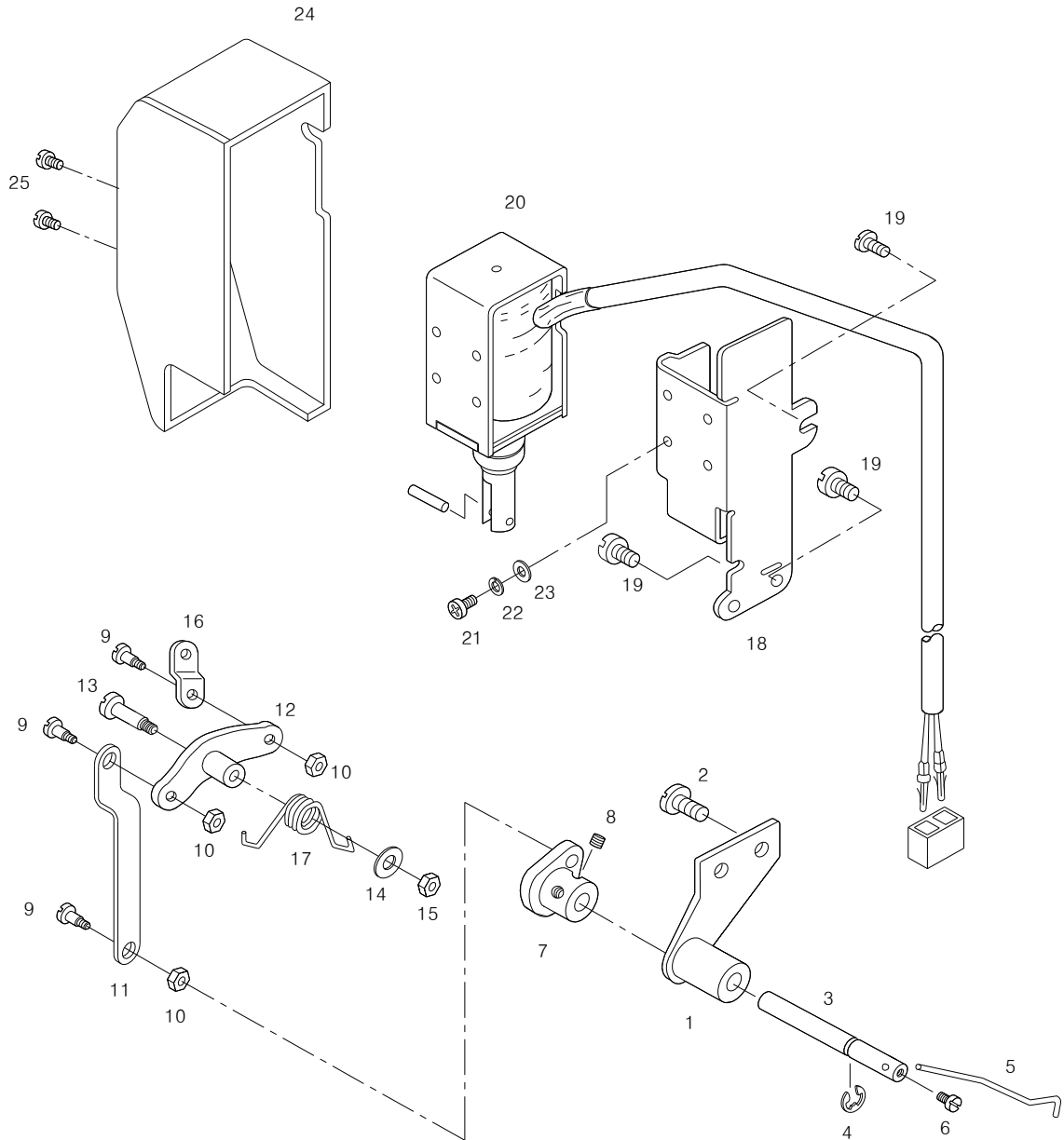
역진 버튼 관계





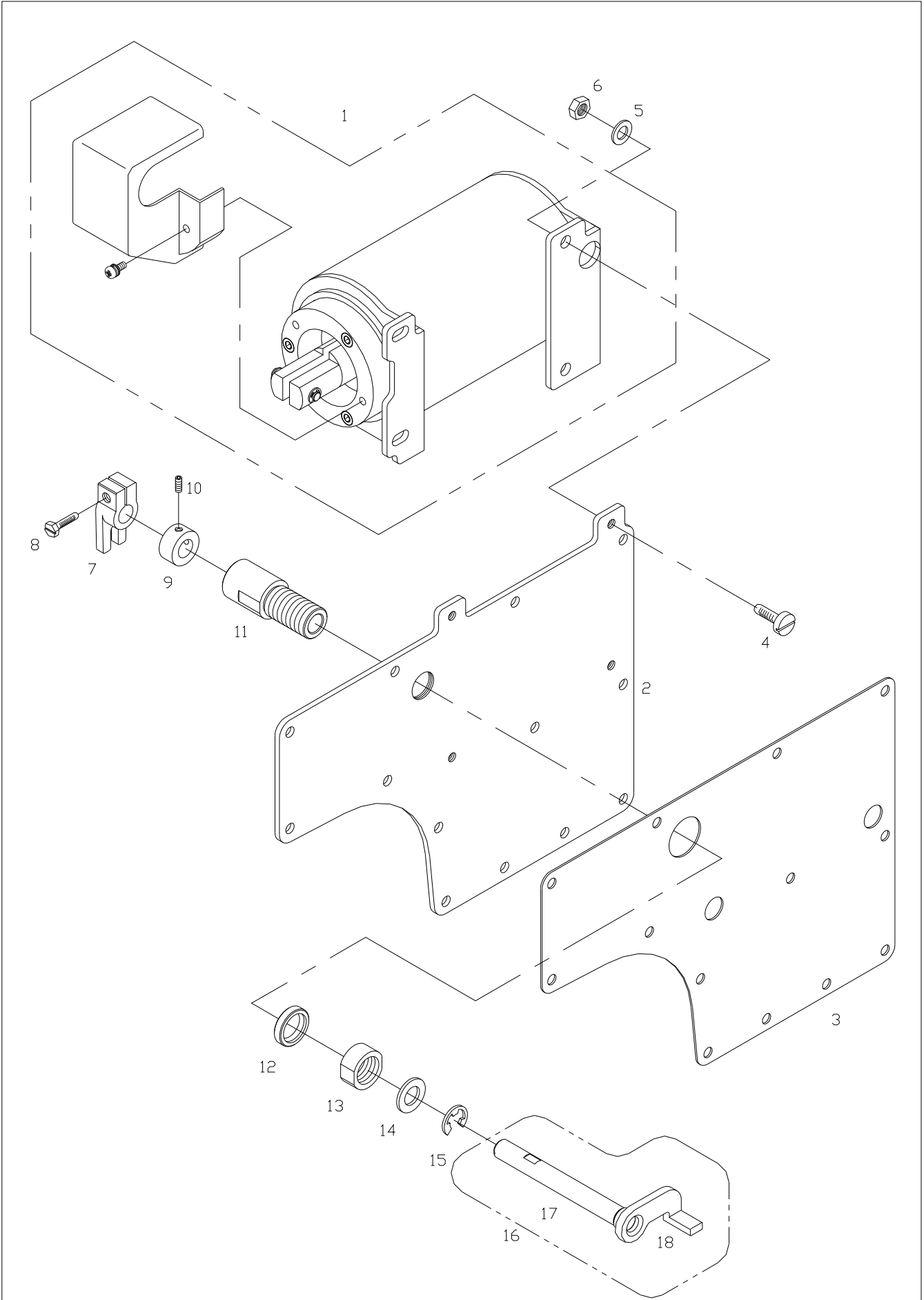
Thread Wiper Mechanism

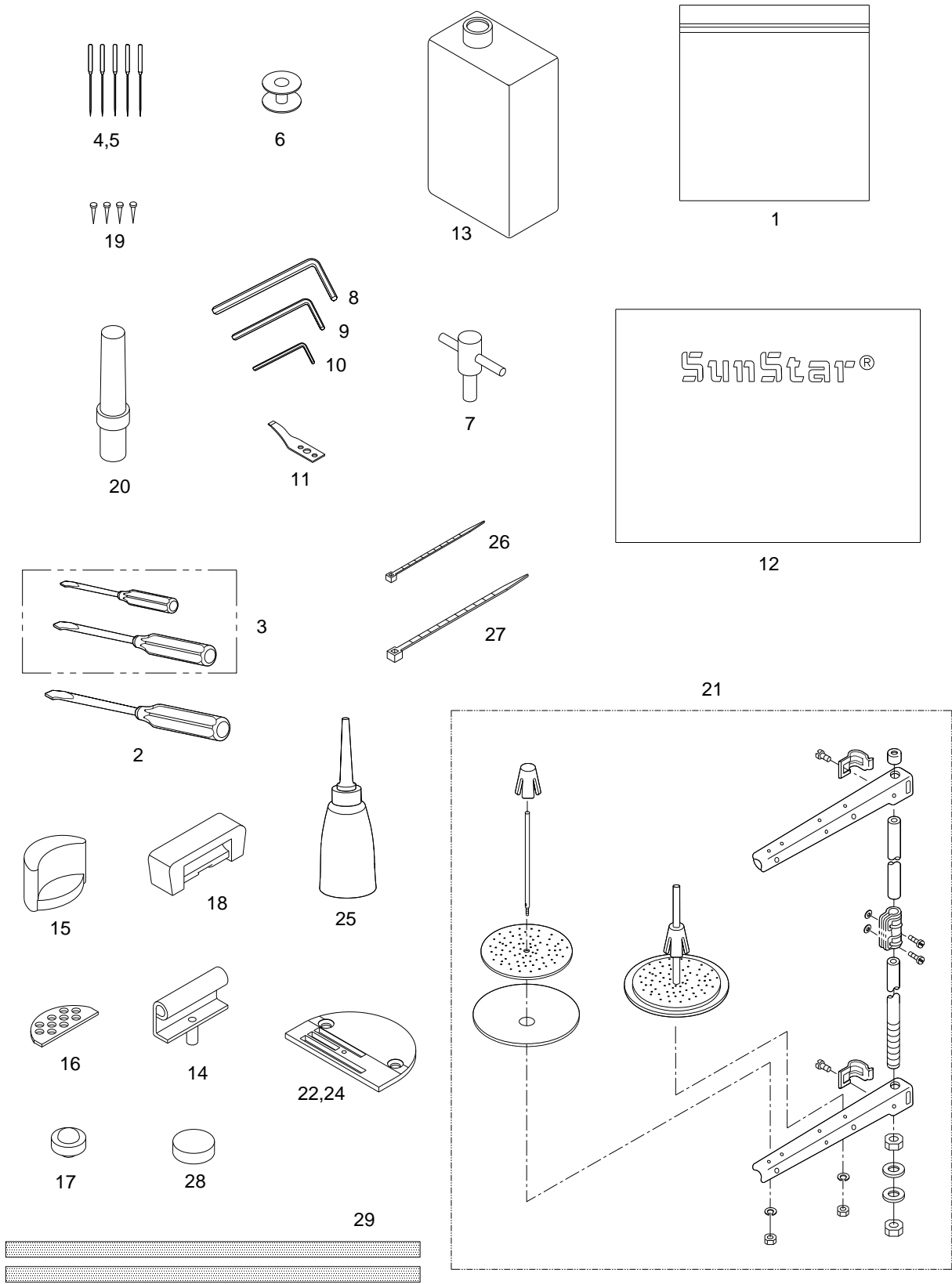
와이퍼 관계



Auto Knee Lifter Solenoid Mechanism (Option)

자동무릎올림 관계 (선택사양)





Index

Parts No.	Name of Parts	Page	Ref.No.	Parts No.	Name of Parts	Page	Ref.No.	Parts No.	Name of Parts	Page	Ref.No.
01-035P-1370	Machine Number Plate	7	A-44	CFA-CL0002	Rubber	17	D-38	CLF-CB0011	Feed Rocker Crank	21	F-12
01-035P-7400	Pin	7	A-41	CFA-CM0006	Reverse Feed Control Lever	17	D-30	CLF-CC0006	Feed Cam Connecting Rod	21	F-5
01-037R-1230	Rubber Cap	7	A-25	CFA-CQ0003	Dial (5mm)	17	D-44	CLF-DC0005	Feed Cam	21	F-1
01-080S-9710	Cable Holder(4N)	25	H-49	CFA-DF0002	Feed Regulator	17	D-21	CLF-DC0007	Feed Lifting Cam	21	F-31
06-007A-257A	Feed Dog (General, 4 row)	21	F-25	CFA-FZ0001	Rubber	17	D-40	CLF-KC0007	Feed Lifting Shaft	21	F-39
06-026A-2310	Reverse Feed Solenoid Ass'y	33	K-1	CFA-KC00040	Feed Adjusting Shaft	17	D-13	CLF-KD0002	Feed Rocker Shaft(Micro Lubrication)	21	F-15
08-001S-1230	Screw [15/64" n=28]	7	A-36	CFA-KC00050	Reverse Feed Control Lever Shaft	17	D-32	CLF-KG0002	Feed Bar Crank Eccentric Shaft A	21	F-20
08-512A-250U	Bearing Bushing	11	B-31	CFA-KJ00020	Feed Regulator Dial Shaft	17	D-42	CLF-KH0002	Feed Lifting Crank Eccentric Shaft A	21	F-30
10-010W-2700	Washer	27	I-13	CGA-GA0002	Needle Plate (A-Type, 3 row)	7	A-20	CLF-LA0001	Feed Lifting Cam Plate	21	F-35
10-129A-257A	Base Plate	27	I-44	CGA-GA0012	Needle Plate (BH-Type, 4 row)	7	A-22	CLS-KH0005	Lower Shaft	19	E-1
11-015A-2300	Wiper Solenoid Ass'y	35	L-20	CGA-GA0012	Needle Plate (BH-Type)	39	N-24	CMB-BB0059	Bed Supporter-B	7	A-16
12-012S-2700	Screw	33	K-11	CGA-GB0005	Feed Dog (General, 3 row)	21	F-24	CMB-BB0062	Bed Supporter-A	7	A-14
40-108A-1306	Thread Tension Disk	15	C-28	CGA-GB0012	Feed Dog (Heavy, 4 row)	21	F-27	CMB-BB0064	Safety Switch Base	7	A-47
41-101A-2300	Bobbin Winder Ass'y	15	C-1	CGA-GC0007	Presser Foot Ass'y (General)	23	G-9	CMB-BJ0024	Gauge Plate	7	A-17
41S034S-306H	Thread Tension Control Cap Nut	15	C-24	CGA-GC0019	Presser Foot Ass'y (Heavy-4row)	23	G-11	CMB-BJ0038	Safety Switch Sub Bracket	7	A-53
44-031G-300G	Oil Window Packing	25	H-2	CHK-HA0007	Hook Ass'y (General)	19	E-12	CMB-BJ0042	Safety Switch Plate	7	A-48
46-102A-2300	Sync. Sensor	13	B-58	CHK-HA0009	Hook Ass'y (Heavy)	19	E-13	CMB-FC0039	Face Plate Gasket	7	A-3
91-001C-1230	Accessory Bag	39	N-1	CHK-HB0006	Bobbin	19	E-14	CMB-FC0041	Rear Cover Gasket	7	A-10
91-105C-2700	Spanner	39	N-7	CHK-HB0006	Bobbin(AL)	39	N-6	CMB-FC0041	Rear Cover Gasket	37	M-3
91-108M-640L	Head Cover	39	N-12	CHK-HC0007	Bobbin Case Ass'y	19	E-15	CMB-HK0005	Arm Thread Guide	7	A-31
ABW-PS0002	Bobbin Winder Base Ass'y	15	C-2	CHK-HH0007	Inner Bobbin Stopper	19	E-16	CMB-HK0010	Thread Guide Plate	15	C-30
AMB-PS0023	Thread Tension Control Ass'y	15	C-23	CLB-BG0006	Holder for Oil Hose(A)	25	H-45	CMB-HK0019	Face Plate Thread Guide	7	A-37
APM-PS0007	Presser Bar Lifter Link Ass'y	23	G-18	CLB-BG0022	Oil Return Hose Holder	25	H-12	CMB-HK0020	Upper Thread Guide Pin	7	A-26
ARB-PS0003	Reverse Feed Control Lever Ass'y	33	K-13	CLB-BJ0017	Timing Pulley-Lower Oil Cover	7	A-45	CMB-HM0001	Thread Tension Adjusting Shaft	15	C-29
AS-000240	Reverse Feed Lever Crank	17	D-35	CLB-BJ0018	Oil Plate	19	E-20	CMB-LA0043	Thread Take-up Lever Cover	7	A-7
AS-000252	Auto Knee Lifter Shaft Ass'y	37	M-16	CLB-CN00030	Piston	21	F-42	CMB-LA0107	Motor Cover	7	A-12
AS-001571	Thread Tension Control Ass'y	7	A-28	CLB-JB0006	Oil Receiver	25	H-4	CMB-LA0108	Face Plate	7	A-2
AS-001731	Thread Take-up Lever Ass'y (General)	11	B-26	CLB-JC0005	Feed Lifting Shaft Bushing(Middle) Pump	21	F-40	CMB-LA0112	Rear Cover	7	A-9
AS-001732	Thread Take-up Lever Ass'y (Heavy)	11	B-27	CLB-JD0003	Oil Wick	25	H-40	CMB-LB0044	Slide Plate Ass'y	7	A-19
AS-001750	Arm-Bed	7	A-1	CLB-JD0009	Oil Wick	25	H-39	CMB-LD0010	Caution Label	7	A-42
AS-006031	Oil Filter Ass'y	25	H-47	CLB-JF0001	Nipple	21	F-41	CMB-NB0001	Bobbin Winder Mes	15	C-32
AST-PS0003	Knee Lifting Pad Ass'y	31	J-16	CLB-JG0009	Hose [φ3×φ5, L=80]	17	D-29	CNB-BF0012	Needle Bar Holder	11	B-40
ATA-PS0013	Thread Tension Control Ass'y	7	A-33	CLB-JG0009	Hose [φ3×φ5, L=1200]	25	H-14	CNB-BH0001	Thread Guide	11	B-48
ATA-PS0013	Thread Tension Control Ass'y (Heavy)	7	A-34	CLB-JG0009	Hose [φ3×φ5, L=400]	25	H-15	CNB-BK0008	Slide Block	11	B-42
ATA-PS0024	Thread Tension Control Ass'y-Heavy	7	A-29	CLB-JG0009	Hose [φ3×φ5, L=20]	25	H-16	CNB-HK0004	Needle Bar Thread Guide	11	B-51
AWP-PS0002	Wiper Crank Ass'y	35	L-7	CLB-JG0009	Hose [φ3×φ5, L=400]	25	H-17	CNB-KA0013	Needle Bar (General)	11	B-49
AWP-PS0003	Wiper Driving Link Ass'y	35	L-12	CLB-JG0009	Hose [φ3×φ5, L=200]	25	H-18	CNB-KA0014	Needle Bar (Heavy)	11	B-50
AWP-PS0008	Wiper Bracket Ass'y	35	L-1	CLB-JG0009	Hose [φ3×φ5, L=30]	25	H-19	CPB-BF0004	Presser Bar Guide Bracket	23	G-13
CAC-JB0001	Oil Tank	39	N-13	CLB-JG0009	Hose [φ3×φ5, L=700]	25	H-20	CPB-BH0006	Finger Guard	23	G-50
CAC-JB0001	Oiler	39	N-25	CLB-JG0009	Hose [φ3×φ5, L=150]	25	H-21	CPB-BJ0007	Thread Guide Plate	23	G-14
CAC-MG0003	Oil Pan Gasket	39	N-29	CLB-JG0009	Hose [φ3×φ5, L=70]	25	H-22	CPB-CM0003	Presser Lifter	23	G-23
CBW-BA0005	Bobbin Winder Action Body	15	C-4	CLB-JG0009	Hose [φ3×φ5, L=40]	25	H-23	CPB-DF0003	Presser Lifter Cam Shaft	23	G-21
CBW-BH0002	Bobbin Stopper	15	C-10	CLB-JG0009	Hose [φ3×φ5, L=100]	25	H-24	CPB-KB0007	Presser Bar	23	G-7
CBW-BJ0001	Thread Winder Action Plate	15	C-22	CLB-JG0009	Hose [φ3×φ5, L=200]	25	H-25	CPB-KC0003	Presser Guide Bar	23	G-4
CBW-BJ0004	Bobbin Winder Adjusting Plate	15	C-11	CLB-JG0009	Hose [φ3×φ5, L=220]	25	H-26	CPM-BH0006	Presser Lifter Connect Bar	23	G-26
CBW-BN0002	Bobbin Stand	15	C-9	CLB-JG0009	Hose [φ3×φ5, L=240]	25	H-27	CPM-BJ0010	Knee Lifting Bar Guide	23	G-33
CBW-CM0002	Bobbin Winder Lever	15	C-14	CLB-JG0009	Hose [φ3×φ5, L=250]	25	H-44	CPM-CA0010	Knee Lifting Link	23	G-27
CBW-CP0002	Bobbin Winder Action Pulley	15	C-5	CLB-JH0006	Oil Terminal	25	H-42	CPM-CM0009	Presser Bar Lifter Lever	23	G-19
CBW-DZ0001	Thread Winder Adjusting Cam	15	C-19	CLB-JJ0005	Oil Window	25	H-1	CPM-CR0004	Knee Lifting Bar	23	G-31
CBW-FA0002	Bobbin Winder Shaft Rubber Ring	15	C-8	CLB-JL0016	Upper Shaft Felt	11	B-4	CRB-FD0001	Insulated Rubber	33	K-10
CBW-FA0003	Bobbin Winder Action Ring	15	C-7	CLB-JL0016	Feed Lifting Shaft Felt	21	F-48	CRB-LC0001	Reverse Button Case	33	K-7
CBW-KC0001	Bobbin Winder Lever Shaft	15	C-16	CLB-JL0024	Oil Wick	19	E-3	CST-BB0025	Head Hinge	39	N-14
CBW-KC0003	Bobbin Winder Driving Shaft	15	C-3	CLB-JL0071	Oil Return Felt	25	H-11	CST-BB0031	Knee Lifting Controller-A	31	J-2
CFA-BJ0009	Reverse Feed Solenoid Base	33	K-2	CLB-JP0001	Nipple	25	H-5	CST-BB0032	Knee Lifting Controller-B	31	J-13
CFA-BJ0010	Dial Shaft Eccentric Stopper	17	D-50	CLB-LA0014	Gear Box Cover	25	H-35	CST-CA0003	Knee Lifting Connecting Link	31	J-10
CFA-CA0007	Feed Link	17	D-1	CLF-BC0001	Feed Bar	21	F-22	CST-CR0001	Head Rest	39	N-20
CFA-CA0008	Feed Link Connecting Rod	17	D-7	CLF-BJ0011	Feed Cam Plate	21	F-6	CST-CR0003	Knee Lifting Bar Support Cap	31	J-15
CFA-CB0007	Feed Adjusting Shaft Crank(Rear)	17	D-17	CLF-CA0006	Connecting Link, A	21	F-9	CST-FD0020	Head Support Rubber (A)	39	N-15
CFA-CB0008	Feed Adjusting Shaft Crank(Front)	17	D-8	CLF-CA0007	Connecting Link, B	21	F-10	CST-FD0021	Head Support Rubber (B)	39	N-16
CFA-CB0009	Reverse Feed Solenoid Crank	33	K-5	CLF-CB0009	Feed Bar Crank	21	F-19	CST-FD0022	Head Support Rubber (C)	39	N-17
CFA-CC0006	Feed Regulator Rod	17	D-20	CLF-CB0010	Feed Lifting Crank	21	F-29	CST-FF0005	Rubber Cushion for Hinge	39	N-18
CFA-CH0001	Eccentric Pin	17	D-25					CST-JA0016	Oil Pan	31	J-1

Index

Parts No.	Name of Parts	Page	Ref.No.	Parts No.	Name of Parts	Page	Ref.No.	Parts No.	Name of Parts	Page	Ref.No.
CST-KC0005	Knee Lifting Controller Shaft-A	31	J-6	DBS-DA0150	Upper Shaft Bushing(Middle)	11	B-12	DSC-BB0036	Screw [15/64"n=28]	7	A-58
CST-KC0006	Knee Lifting Controller Shaft-B	31	J-14	DBS-DA0151	Lower Shaft Bushing(Rear)	19	E-6	DSC-BC0001	Screw [11/64" n=40]	7	A-18
CST-MF0001	Thread Stand Ass'y	39	N-21	DBS-DA0152	Lower Shaft Bushing(Front)	19	E-8	DSC-BC0002	Screw [9/64"n=40]	15	C-33
CTA-BD00020	Spring Cover	15	C-27	DBS-DA0153	Feed Lifting Shaft Bushing(Front)	21	F-36	DSC-BF0001	Screw [1/8" n=44]	11	B-52
CTA-BJ0001	Spring Stopper	15	C-25	DBS-DA0154	Bushing(Rear)	21	F-46	DSC-BF0001	Screw [1/8" n=44]	27	I-55
CTH-CB0011	Thread Take-up Crank	11	B-32	DBS-DB0035	Bushing	15	C-35	DSC-BF0006	Screw [3/16" n=28]	7	A-8
CTH-CC0009	Needle Bar Crank Rod	11	B-37	DBS-DB0039	Bushing(Rear)	17	D-34	DSC-BF0006	Screw [3/16"n=28]	23	G-44
CTH-CJ0010	Needle Bar Crank(Heavy)	11	B-35	DBS-DB0040	Upper Shaft Bushing(Front)	11	B-11	DSC-BF0006	Screw [3/16" n=28]	25	H-13
CTH-HJ0014	Thread Take-up (Heavy)	11	B-29	DCL-AA0003	Feed Lifting Shaft Collar	21	F-38	DSC-BF0006	Screw [3/64" n=28]	25	H-46
CTR-BB0007	Wire Holder Bracket	23	G-41	DCL-AA0005	Thrust Collar[D=φ7.94, W=8]	11	B-43	DSC-BF0006	Screw [3/16" n=28]	27	I-38
CTR-CM0008	Thread Tension Release Plate	23	G-37	DCL-AA0019	Lower Shaft Collar	19	E-7	DSC-BF0006	Screw [3/16"n=28]	33	K-8
CTT-BM0008	Spring Holder	27	I-37	DCL-AA0023	Feed Regulator Collar	17	D-24	DSC-BF0006	Screw [3/16"n=28]	35	L-2
CTT-BB0020	Base	27	I-48	DCL-AA0049	Feed Rocker Shaft Collar	21	F-18	DSC-BF0006	Screw [3/16"n=28]	35	L-19
CTT-BB0021	Bobbin Stopper Bracket	29	I-59	DCL-AA0050	Collar	37	M-9	DSC-BF0007	Screw [15/64" n=28, L=14]	7	A-15
CTT-BF0002	Bobbin Stopper Holder	27	I-52	DCL-AA0053	Feed Adjusting Shaft Collar	17	D-16	DSC-BF0007	Screw [15/64"n=28, L=14]	17	D-11
CTT-BF0010	Thread Trimming Holder	27	I-11	DCL-AA0056	Upper Shaft Collar	11	B-13	DSC-BF0007	Screw [15/64" n=28]	27	I-50
CTT-BH0004	Bobbin Stopper	29	I-57	DCL-BA0006	Return Spring Guide Bushing	27	I-23	DSC-BF0007	Screw [15/64"n=28, L=14]	33	K-4
CTT-BH0005	Bobbin Stopper Lever	27	I-51	DCL-BA0009	Spacer	23	G-2	DSC-BF0007	Screw [15/64"n=28]	37	M-4
CTT-BJ0011	Thread Retaining Plate	27	I-5	DGR-AB0009	Lower Shaft Gear A	19	E-4	DSC-BF0010	Screw [11/64"n=40]	19	E-17
CTT-BK0001	Solenoid Block	27	I-45	DGR-AB0010	Feed Lifting Gear Ass'y	21	F-45	DSC-BF0010	Screw [11/64" n=40]	25	H-38
CTT-CA0008	Lever Connecting Link	27	I-15	DPK-CA0022	Rubber	25	H-43	DSC-BF0011	Screw [3/16"n=28]	37	M-8
CTT-CB0007	Cam Follower Crank	27	I-30	DPK-CB0004	Rubber Cap	25	H-41	DSC-BF0012	Screw A [11/64"n=40, L=18]	23	G-15
CTT-CL0003	Roller	27	I-26	DPK-CB0008	Rubber Cap (S)	7	A-24	DSC-BF0016	Screw [9/64" n=40]	11	B-39
CTT-CM0011	Thread Trimming Lever	27	I-18	DPK-CB0009	Face Plate Rubber Cap (L)	7	A-5	DSC-BF0017	Screw [11/64"n=40]	15	C-34
CTT-CM0018	Clutch Lever Ass'y	27	I-41	DPK-CB0024	Rubber	7	A-55	DSC-BF0018	Screw [1/8"n=40]	15	C-12
CTT-CM0019	Slide Arm	27	I-25	DPK-CB0025	Rubber Cap	21	F-49	DSC-BF0018	Screw [1/8"n=44]	19	E-21
CTT-DF0002	Thread Trimming Cam	27	I-39	DPK-CZ0002	Cap	7	A-35	DSC-BF0018	Screw [1/8"n=44, L=6]	21	F-28
CTT-FB0002	Cushion Washer	27	I-29	DPL-BF0002	Timing Pulley-Upper (T5)	11	B-16	DSC-BF0019	Screw [3/16"n=28]	17	D-46
CTT-FD0001	Stopper	29	I-61	DPL-BF0003	Timing Pulley-Lower (T5)	21	F-47	DSC-BF0036	Screw [11/64" n=40]	7	A-54
CTT-FD0002	Cushion Rubber	27	I-33	DPL-BF0004	Timing Pulley-Lower A (T5)	21	F-50	DSC-BF0036	Screw [11/64" n=40, L=7]	25	H-31
CTT-KF0004	Thread Timming Shaft	27	I-20	DPL-BF0005	Timing Pulley-Lower B (T5)	21	F-51	DSC-BF0036	Screw [11/64"n=40, L=7]	33	K-3
CTT-NA0006	Rotary Mes	27	I-8	DPN-AA0035	Reverse Button Actuator Pin	33	K-12	DSC-BF0037	Screw (A) [9/32" n=28, L=16]	11	B-7
CTT-NA0010	Rotary Mes	27	I-9	DPN-AA0077	Dial Pin	17	D-47	DSC-BF0062	Screw [1/8" n=40]	27	I-3
CTT-NB0011	Fixed Mes	27	I-1	DPN-AA0078	Reverse Feed Lever Crank Pin	17	D-37	DSC-BF0072	Stopper Screw [15/64" n=28]	27	I-32
CTT-NB0011	Fixed Mes	39	N-11	DPN-AA0079	Feed Cam Connecting Rod Pin	21	F-11	DSC-BF0084	Screw [3/16" n=28, L=11]	7	A-4
CUS-BA0002	Sync. Sensor Base	13	B-57	DPN-AA0080	Feed Rocker Crank Pin	21	F-13	DSC-BF0084	Screw [3/16" n=28]	13	B-61
CUS-BB0012	Sensor Bracket	13	B-59	DPN-AA0083	Supporting Pin	23	G-39	DSC-BF0084	Screw [3/16"n=28, L=11]	23	G-42
CUS-BJ0009	Sync. Sensor Slit	11	B-55	DPN-AD0067	Feed Link Pin a	17	D-5	DSC-BF0084	Screw [3/16"n=28, L=11]	23	G-55
CUS-BJ0010	Link Cam Protection Plate	11	B-10	DPN-AD0070	Hinge Screw [D=φ9.53, H=15]	33	K-6	DSC-BF0101	Screw B [9/64"n=40, L=9]	23	G-16
CUS-CF0004	Bobbin Winder Driving Wheel	11	B-14	DPN-AD0073	Thread Take-up Crank Shaft	11	B-33	DSC-BF0118	Oil Seal Screw [3/16"n=32, L=14]	19	E-2
CUS-CP0004	Pulley	11	B-24	DPN-BC0025	Feed Link Connecting Pin-A	17	D-2	DSC-BF0122	Screw [3/16"n=28, L=15.5]	17	D-36
CUS-DA0014	Link Cam	11	B-6	DPN-BC0026	Feed Link Connecting Pin-B	17	D-3	DSC-BF0122	Screw [3/16"n=28, L=15.5]	21	F-14
CUS-FA0001	Oil Adjusting Rubber	11	B-5	DSC-AC0004	Bolt [M6]	23	G-48	DSC-BF0124	Thread Trimmer Stopper Screw	27	I-35
CUS-FZ0001	Cable Guide Rubber	13	B-62	DSC-AC0004	Screw A [M6×P1.0, L=38]	31	J-3	DSC-BF0125	Screw [15/64"n=28]	29	I-62
CWP-BB0001	Wiper Base	35	L-18	DSC-BA0001	Screw [9/64" n=40]	7	A-32	DSC-BF0127	Piston Cap Screw	21	F-44
CWP-BH0002	Wiper	35	L-5	DSC-BA0001	Screw [9/64"n=40]	35	L-6	DSC-BJ0002	Screw [11/16"n=40]	17	D-49
CWP-CA0001	Wiper Solenoid Connection Link	35	L-16	DSC-BA0001	Screw [9/64"n=40]	35	L-25	DSC-BJ0002	Screw [11/64" n=40]	27	I-6
CWP-CA0013	Wiper Rod-A	35	L-11	DSC-BA0002	Screw [9/64"n=40, L=10.5]	23	G-12	DSC-BJ0003	Screw [9/64"n=40]	23	G-24
CWP-KC0002	Wiper Rotation Shaft	35	L-3	DSC-BA0003	Screw [11/64" n=40]	11	B-44	DSC-BJ0003	Screw [9/64"n=40]	23	G-56
CWP-LA0004	Wiper Cover	35	L-24	DSC-BA0009	Screw [9/64" n=44, L=5.5]	25	H-3	DSC-BJ0014	Screw [9/64" n=40]	7	A-46
D[K-CB0002	Rubber Cap (M)	7	A-6	DSC-BA0010	Screw [9/64" n=40]	11	B-41	DSC-BJ0014	Screw [9/64"n=40]	21	F-8
DBS-DA0126	Needle Bar Bushing, Upper	11	B-45	DSC-BA0010	Screw [11/64"n=40]	21	F-21	DSC-BJ0014	Screw [9/64" n=44]	25	H-10
DBS-DA0129	Needle Bar Crank Rod Bushing	11	B-38	DSC-BA0010	Screw [11/64" n=40]	27	I-46	DSC-BJ0020	Screw [1/4" n=40]	27	I-31
DBS-DA0130	Needle Bar Bushing, Lower (General)	11	B-46	DSC-BA0011	Screw [11/64"n=40]	33	K-14	DSC-BJ0038	Screw [15/64"n=28, L=10.5]	17	D-10
DBS-DA0131	Feed Adjusting Shaft Bushing(Front)	17	D-14	DSC-BA0014	Screw [3/16"n=32]	17	D-31	DSC-CA0001	Screw [15/64"n=28]	19	E-9
DBS-DA0132	Feed Adjusting Shaft Bushing(Rear)	17	D-15	DSC-BA0019	Screw [M3, L=10]	13	B-60	DSC-CA0001	Screw [15/64"n=28]	21	F-37
DBS-DA0138	Feed Rocker Shaft Bushing(Rear)	21	F-16	DSC-BA0024	Screw [M6]	11	B-56	DSC-CA0004	Screw [11/64"n=40]	37	M-10
DBS-DA0139	Feed Rocker Shaft Bushing(Front)	21	F-17	DSC-BA0025	Screw [11/64"n=40]	17	D-9	DSC-CA0006	Screw [11/64" n=40, L=4]	11	B-15
DBS-DA0140	Presser Bar Bushing	23	G-8	DSC-BA0027	Screw [15/64"n=28]	31	J-7	DSC-CA0016	Screw [11/64" n=40]	7	A-30
DBS-DA0148	Thread Take-up Bushing	11	B-30	DSC-BB0014	Screw [11/64" n=40]	27	I-10	DSC-CA0021	Screw (B) [9/32" n=28, L=16]	11	B-8
DBS-DA0149	Needle Bar Bushing, Lower (Heavy)	11	B-47	DSC-BB0018	Screw [11/64" n=40]	25	H-37	DSC-CB0003	Screw [11/64"n=40]	15	C-6
				DSC-BB0020	Screw [9/64" n=40]	27	I-2	DSC-CB0003	Screw [11/64"n=40]	29	I-60

Index

Parts No.	Name of Parts	Page	Ref.No.	Parts No.	Name of Parts	Page	Ref.No.	Parts No.	Name of Parts	Page	Ref.No.
DSC-CB0004	Screw [1/4" n=40, L=6]	11	B-9	DTC-AH0008	Hose Holder	25	H-29	PSC-AC0006	Screw [M6]	27	I-19
DSC-CB0004	Screw [1/4"n=40, L=6]	17	D-12	DTC-AH0008	Cable Holder	29	I-58	PSC-AC0018	Screw [M4×P0.7]	15	C-20
DSC-CB0004	Screw [1/4"n=40]	19	E-5	DTC-AK0003	Magnet	39	N-28	PSC-AC0061	Screw [M5, L=15]	7	A-13
DSC-CB0004	Screw [1/4"n=40, L=6]	21	F-3	DWS-AA0004	Washer	15	C-18	PSC-AC0072	Screw B [M6×P1.0, L=25]	31	J-4
DSC-CB0004	Screw [1/4" n=40]	27	I-40	DWS-AA0006	Washer	11	B-23	PSC-BA0001	Screw [M3]	35	L-21
DSC-CB0005	Screw [15/64" n=28, L=7.5]	11	B-25	DWS-AA0006	Washer	35	L-14	PSC-CB0001	Screw [M6, L=8]	11	B-19
DSC-CB0005	Screw [15/64"n=28, L=7.5]	17	D-4	DWS-AA0011	Washer	27	I-7	PSC-CB0002	Screw [M4×P0.7]	15	C-15
DSC-CB0005	Screw [15/64"n=28]	33	K-17	DWS-AA0038	Washer	7	A-56	PSN-CB0002	Screw [M4]	35	L-8
DSC-FA0007	Hinge Screw	23	G-30	DWS-AA0038	Washer	23	G-25	PSN-AA0014	Nut [15/64"n=28]	23	G-49
DSC-FA0008	Hinge Screw	35	L-9	DWS-AA0038	Washer	23	G-57	PSN-AA0014	Nut [M6]	31	J-5
DSC-FA0009	Hinge Screw	35	L-13	DWS-AA0052	Washer	27	I-21	PSN-AA0017	Nut B [3/16"n=32]	23	G-47
DSC-FA0056	Stud Screw [11/64" n=40]	27	I-16	DWS-AA0112	Washer	15	C-36	PSR-AA0001	Stop-Ring	27	I-12
DSC-FA0060	Hinge Screw	23	G-29	DWS-AA0113	Feed Lifting Cam Thrust Guide	21	F-33	PSR-AB0011	C-Ring	13	B-63
DSC-FA0062	Stopper Stud Screw	17	D-41	DWS-AA0114	Washer [φ7.1×φ11×1]	21	F-23	PSR-AC0001	E-ring [φ9]	27	I-22
DSC-FA0122	Safety Switch Hinge Screw	7	A-50	DWS-AA0118	Washer	37	M-14	PSR-AC0001	E-ring φ9	31	J-9
DSC-FA0134	Stud Screw	27	I-27	DWS-AA0144	Washer	37	M-5	PSR-AC0001	E-ring [φ9]	33	K-16
DSC-FC0001	Hinge Screw	23	G-28	DWS-CA0001	Spring Washer	11	B-22	PSR-AC0002	E-ring [φ5]	15	C-17
DSC-FD0003	Hinge Screw [D=7.24, H=3.3]	31	J-11	DWS-CA0001	Washer	19	E-18	PSR-AC0002	E-Ring [φ5]	23	G-20
DSC-FD0011	Clutch Lever Hinge Screw	27	I-43	GP-000760	Oil Distributor A	25	H-6	PSR-AC0002	E-Ring (φ5)	35	L-4
DSC-FH0002	Stud Screw	27	I-42	GP-000773	Auto Knee Lifter Shaft Bushing	37	M-11	PSR-AC0005	E-ring [φ6]	27	I-54
DSC-FH0003	Hinge Screw [5/16"n=24]	23	G-17	GP-000830	Feed Regulator Bushing	17	D-22	PSR-AC0006	E-ring [φ8]	37	M-15
DSC-FH0004	Hinge Screw [5/16"n=24]	23	G-36	GP-001045	Presser Foot Lifter-A	23	G-51	PTC-AH0004	Cable Holder(10N)	25	H-48
DSC-GC0004	Hinge Screw	17	D-18	GP-001046	Presser Foot Minute Lifting Base	23	G-52	PTL-AB0001	L Wrench(2mm)	39	N-10
DSC-HA0001	Screw [9/16"n=20]	23	G-1	GP-001739	Bracket for Oil Filter	25	H-30	PTL-AB0003	L Wrench(3mm)	39	N-8
DSC-HC0008	Hinge Screw [15/64" n=28]	27	I-56	GP-001741	Back Cover	37	M-2	PTL-AB0005	L Wrench(2.5mm)	39	N-9
DSC-HD0010	Screw	17	D-26	GP-001744	Pipe	25	H-28	PTL-BA0001	Driver(Large)	39	N-2
DSC-HZ0011	Cable Connecting Bolt	23	G-45	GP-001748	Gasket	25	H-34	PTL-BA0002	Driver(Middle, Small)	39	N-3
DSN-AA0001	Nut [11/64" n=40]	7	A-27	GP-001817	Reverse Button S/W Ass'y	33	K-9	PWS-AA0005	Washer	35	L-23
DSN-AA0004	Nut [15/64" n=28]	27	I-34	GP-001858	Safety Switch	7	A-51	PWS-AA0021	Washer	15	C-13
DSN-AA0004	Nut [15/64"n=28]	31	J-12	GP-002164	Thread Take-up (General)	11	B-28	PWS-CA0001	Spring Washer	35	L-22
DSN-AA0005	Nut [1/4"n=40]	17	D-19	GP-002167	Needle Bar Crank(General)	11	B-34	PWS-CA0004	Spring Washer	23	G-34
DSN-AA0006	Nut [3/16" n=32]	27	I-28	GP-005053	Arm Oil Shield	25	H-8	PWS-CA0005	Washer	27	I-49
DSN-AA0006	Nut [3/16"n=32]	35	L-15	GP-005905	Oil Filter Base	25	H-32	SC-000095	Screw	23	G-53
DSN-AA0007	Nut	15	C-31	GP-005912	Guide Plate	25	H-36	SC-000174	Screw [M2, L=12]	7	A-52
DSN-AA0009	Nut [11/64"n=40]	17	D-27	GP-006209	Model Mark (KM-2310G)	7	A-38	SC-0319-1230	Screw [3/16"n=32]	19	E-10
DSN-AA0009	Nut [11/64" n=40]	27	I-17	GP-006210	Model Mark (KM-2310B)	7	A-39	SFAM-500-002	Motor-Hollow	11	B-20
DSN-AA0012	Nut [11/64"n=40]	35	L-10	GP-006760	Oil Filter Cap	25	H-33	SL-000068	Auto Knee Lifter Solenoid Ass'y	37	M-1
DSN-AA0017	Nut [1/8" n=40]	27	I-4	GP-007191	Oil Distributor	25	H-7	SN-000014	Nut	23	G-54
DSN-AA0023	Nut [5/16"n=28]	23	G-35	GP-009821	Warning Sticker A	7	A-57	SN-0121-4000	Nut [15/64"n=28]	37	M-6
DSN-AA0024	Nut A [3/16"n=32]	23	G-46	GP-013155	Auto Knee Lifter Shaft	37	M-17	STT100-00001	Thread Trimming Solenoid Ass'y	27	I-47
DSN-CC0001	Nut [9/16"n=20]	23	G-3	GP-013156	Auto Knee Lifter Bracket	37	M-18		Cable Tie(Middle)	39	N-27
DSN-CY0006	Nut	37	M-13	GP-017452	Sticker	9	A-59		Cable Tie(Small)	39	N-26
DSP-AA0016	Spring	19	E-11	GP-021212	Thread Tension Release Wire	23	G-40		Nail	39	N-19
DSP-AA0017	Presser Spring	23	G-5	GP-023209	Crank	37	M-7		Needle (DB×1 #14)	11	B-53
DSP-AA0028	Spring for Dial Pin	17	D-48	GP-034537	Oil Adjusting Pin	11	B-2		Needle (DB×1 #14)	39	N-4
DSP-AA0052	Spring	17	D-51	GP-044024	Rubber Cap	7	A-23		Needle (DB×1 #21)	11	B-54
DSP-AA0056	Slide Arm Return Spring	27	I-24	PBR-AA0075	Needle Bearing	21	F-34		Needle (DB×1 #21)	39	N-5
DSP-AA0062	Presser Spring(Heavy)	23	G-6	PBR-BA0006	Bearing	11	B-36				
DSP-AA0063	Piston Spring	21	F-43	PBR-BA0010	Needle Bearing	21	F-4				
DSP-AB0001	Thread Winder Spring	15	C-21	PBR-BA0012	Needle Bearing	27	I-14				
DSP-AB0010	Spring	27	I-36	PBS-BA0006	DU Bushing [φ12×φ14×20]	17	D-33				
DSP-AB0029	Feed Adjusting Spring	17	D-28	PBT-BF0002	Timing Belt(150-T5-550)	11	B-17				
DSP-AB0030	Reverse Feed Lever Return Spring	17	D-39	PCR-AD0002	Coupling	11	B-18				
DSP-AC0002	Wiper Spring	35	L-17	PN-000104	Feed Link Pin b	17	D-6				
DSP-AC0017	Bobbin Stopper Spring	27	I-53	PPK-AD0001	Oil Seal	37	M-12				
DSP-AC0021	Spring	23	G-38	PPK-BA0003	O-Ring (P5)	23	G-32				
DSP-AC0022	Spring	33	K-15	PPK-BA0004	O-Ring	11	B-3				
DSP-AC0043	Safety Switch Spring	7	A-49	PPK-BA0004	O-Ring	23	G-22				
DSP-AC0046	Knee Lifting Controller Spring	31	J-8	PPK-BA0016	O-Ring	17	D-43				
DSP-BA0019	Thread Tension Control Spring	15	C-26	PPK-BA0018	O-Ring for Bushing (P18)	17	D-23				
DTC-AH0002	Cord Holder "A"	7	A-11	PPN-AF0021	Spring Pin	19	E-19				
DTC-AH0008	Wire Holder	23	G-43	PSC-AC0001	Screw [M5, L=25]	11	B-21				

