



---

# **PARTS BOOK**

---

## **KM-235A/B-7S**

고속 1분침 분봉 자동사절 재봉기  
High Speed, 1- Needle,  
Lock-Stitch Machine with Automatic  
Thread Trimmer

PME-120919

# Information

## A. Parts Book 구성

### Structure of Part Book

① **A** Arm, Bed & Machine Body Mechanism  
팔, 침대 및 의장품 관계

④ ⑤ ⑥ ⑦ ⑧ ⑨

| Ref. No. | Parts No.     | Note | Name of Parts                    | 중 명           | Q'ty  | Assembly No. |
|----------|---------------|------|----------------------------------|---------------|-------|--------------|
| A-1      | 01-12841-03   |      | Arm                              | 팔             | 1     |              |
| A-2      | 01-10073-06   |      | Bed                              | 침대            | 1     |              |
| A-4      | 01-02120-00   |      | Face Plate                       | 면판            | 1     |              |
| A-5      | 01-02044-12H  |      | Face Plate Gasket                | 면판 가스켓        | 1     |              |
| A-6      | 01-1174-4122  |      | Screw(L)104*mm2                  | 볼트            | 10    |              |
| A-7      | 01-11011-123D |      | Rubber Cap For Face Plate        | 면판 고무캡        | 2     |              |
| A-9      | 01-00194-123D |      | Caution S-Screw                  | 경고 스크류        | 1     |              |
| A-8      | 01-011973-00  |      | Thermap Layer Cover              | 보온층 피막        | 1     |              |
| A-10     | 01-02020-00   |      | Screw(S)104*mm2                  | 볼트(S)104*mm2  | 1     |              |
| A-11     | 01-01746-00   |      | Bed Cover(L)                     | 침대 커버(좌)      | 1     |              |
| A-12     | 01-01441-123H |      | Bed Cover(Gasket,L)              | 침대 커버 가스켓(좌)  | 1     |              |
| A-13     | 01-02643-123D |      | Screw(L)104*mm2                  | 볼트(L)104*mm2  | 14    |              |
| A-13-1   | 45-0244-1002  |      | Washer                           | 와셔            | 2     |              |
| A-14     | 01-01752-00   |      | Bed Cover(S)                     | 침대 커버(중)      | 1     |              |
| A-15     | 01-01744-123H |      | Bed Cover(Gasket(S))             | 침대 커버 가스켓(중)  | 1     |              |
| A-16     | 440211-100H   |      | 3-Tank Rubber Cap                | 3탱크 고무캡       | 1     |              |
| A-17     | 01-0274-123D  |      | Thread Guide with Three Poles    | 세극을 달인 가이드    | 15Set |              |
| A-19     | 01-0201-123D  |      | Thread Guide(L)                  | 면판 실링(L)      | 1     |              |
| A-20     | 01-0202-123D  |      | Thread Guide(M)                  | 면판 실링(M)      | 3     |              |
| A-21     | 01-0203-123D  |      | Thread Guide(S)                  | 면판 실링(S)      | 1     |              |
| A-22     | 01-01643-00   |      | Arm Thread Guide Assy            | 팔 실링 가이드 어셈블리 | 1     |              |
| A-23     | 11-0175-752D  |      | Nut                              | 너트            | 1     |              |
| A-24     | 01-0201-123H  |      | Thread Guide(L)                  | 실링 가이드(L)     | 1     |              |
| A-25     | 010275-100H   |      | Silicon Tank Assy                | 실리콘 탱크 어셈블리   | 15Set |              |
| A-26     | 010206-100H   |      | Silicon Tank                     | 실리콘 탱크        | 1     |              |
| A-27     | 010206-100H   |      | Silicon Oil Window               | 실리콘 유창        | 1     |              |
| A-28     | 010240-100H   |      | Silicon Part                     | 실리콘 부품        | 1     |              |
| A-29     | 01-12923-00   |      | Part for Silicon Oil Supply      | 실리콘 기름 공급 부품  | 1     |              |
| A-30     | 01-0164-123D  |      | Screw(L)104*mm2                  | 볼트(L)         | 1     |              |
| A-31     | 04-12411-123D |      | Arm Upper Part Rubber Cap        | 팔 상부 고무 캡     | 2     |              |
| A-33     | 04-0201-123H  |      | Needle Bar Rubber Cap            | 바늘봉 고무 캡      | 1     |              |
| A-34     | 01-04211-042L |      | Rubber Cap(L)                    | 고무캡(L)        | 4     |              |
| A-35     | 44-02111-742D |      | Rubber Cap(S)                    | 고무캡(S)        | 7     |              |
| A-36     | 01-0175-123D  |      | Bed Rubber                       | 침대 고무         | 1     |              |
| A-37     | 01-01917-00   |      | Welder (Sticker(M))              | 접착 스티커-중형     | 1     |              |
| A-38     | 01-01918-00   |      | M Welder (Sticker(S))            | 접착 스티커-소형     | 1     |              |
| A-39     | 01-01923-00   |      | L Welder (Sticker(L))            | 접착 스티커-대형     | 1     |              |
| A-40     | 01-01920-00   |      | K Welder (Sticker(K))            | 접착 스티커-K형     | 1     |              |
| A-41     | 01-02110-123D |      | Tap Cover                        | 타프 커버         | 2     |              |
| A-42     | 01-0214-123H  |      | Tap Cover                        | 타프 커버         | 1     |              |
| A-43     | 41-1214-123H  |      | Silobin Winder Assy              | 실링기           | 15Set |              |
| A-44     | 41-02013-100H |      | Silobin Winder (Base Assy)       | 실링기 베이스       | 1     |              |
| A-45     | 41-2204-123H  |      | Silobin Winder (Shaft)           | 실링기 구동축       | 1     |              |
| A-46     | 01-02010-00   |      | Silobin Winder (S)               | 실링기 축         | 1     |              |
| A-47     | 01-02010-750D |      | Silobin Winder (M)               | 실링기 축         | 1     |              |
| A-48     | 41-02001-100H |      | Silobin Winder                   | 실링기 축         | 1     |              |
| A-49     | 01-0104-552T  |      | Screw(L)104*mm2                  | 볼트(L)         | 2     |              |
| A-50     | 41-02001-100H |      | Silobin Winder Action Ring       | 실링기 작동링       | 1     |              |
| A-51     | 41-02001-100H |      | Silobin Winder Shaft Rubber Ring | 실링기 축 고무링     | 1     |              |
| A-52     | 41-02102-100H |      | Silobin Winder Spring            | 실링기 스프링       | 1     |              |
| A-53     | 41-02113-100H |      | Silobin Winder Adjusting Plate   | 실링기 조정판       | 1     |              |
| A-54     | 01-0130-123D  |      | Screw(L)104*mm2                  | 볼트(L)         | 1     |              |
| A-55     | 01-01194-123D |      | Washer                           | 와셔            | 1     |              |
| A-56     | 41-02113-100H |      | Silobin Winder Lower Shaft       | 실링기 하축        | 1     |              |
| A-57     | 41-02145-100H |      | Silobin Winder Adjusting Term    | 실링기 조정 용      | 1     |              |
| A-58     | 0102150-04113 |      | Screw(M)104*mm2                  | 볼트(M)         | 1     |              |

Note: P=Heavy Material(중형재), M=Medium Material(중형재), M=Plumetic Heavy Material(중형재), L=Light Material(저형재), K=Roll Material(롤재), EL=Large Shuttle Piece(대 셔플 폭재)

①: 관계 별 고유 코드

Unique code by mechanism

②: 관계 별 고유 명칭

Unique name by mechanism

③: 관계도

Explode view

④ Ref.No.: 파트별 고유 식별 번호

Unique identification number by part

⑤ Parts No.: 고유 제품 코드

Unique Product code

Ex)

| 구분<br>Category   | Code         | 비고<br>remarks                |
|------------------|--------------|------------------------------|
| 구 부품<br>Old part | 01-030C-1230 |                              |
| 신 부품<br>New Part | AS-000000-00 | 조(조) 파트<br>Set parts         |
|                  | GP-000000-00 | 기구적 파트<br>Instrumental parts |
|                  | EP-000000-00 | 전기적 파트<br>Electrical parts   |

⑥ Note: 공지사항 표기 및 메모

Refers to notice and memo

⑦ 품

명: 파트의 고유 품명

Name of Part: Unique name of parts

⑧ Q'ty : 파트의 수량

The number of parts

⑨ Assembly no.: 조(조) 파트의 식별 번호

Unique identification number by set part

# Warning

1. 조에 속한 파트는 개별 조립 시 제품의 파손 또는 재봉 불량 발생될 수 있어 해당 파트에 대한 주문 시에는 조 품목으로만 구입이 가능합니다.
2. 본 책자는 Parts Book으로 제작되었으므로 매뉴얼로 사용 불가합니다.
3. 사전 예고 없이 사양이 변경 될 수도 있습니다.

1. The parts classified as ass'y items may cause damage to the machine or bad sewing when they are separately assembled. Hence, when they are ordered, they can be purchased as ass'y items only.
2. This is a parts book. It cannot be used as a manual.
3. Parts are Subject to change in Design Without Prior Notice.

## Note

- 썬스타 제품의 부품은 아래 인터넷주소로 접속하시어 신청할 수 있습니다.  
<http://www.sunstarcs.com>
- 가입된 회원께서는 썬스타 포탈 사이트에 로그인후 필요한 부품을 신청할 수 있습니다.
- 부품관리-발주관리-발주등록 항목에서 부품번호와 신청수량을 입력하여 등록하시면 발주가 됩니다.
- 부품번호를 모르시는 경우 파츠북 조회를 클릭하시고 사용하는 기종을 검색하여 선택하시면 해당 기종의 파츠북을 조회할 수 있습니다.
- 파츠북은 관계별로 구분되어 있으며 관계를 알고 있다면 부품 찾기가 용이합니다.
  
- You can make an order for the parts of Sunstar machine to connect internet address.  
<http://www.sunstarcs.com>
- You can request for parts you want after login if you are a registered member.
- In parts Management - Order Management - Order Registration entry, you can place an order by entering the part number and quantity.
- If you don't know the parts number, click the parts book menu bar.  
In a download list, you can read parts book by searching model you use.
- This parts book is classified by the mechanism, therefore you can find part easily.



# CONTENTS

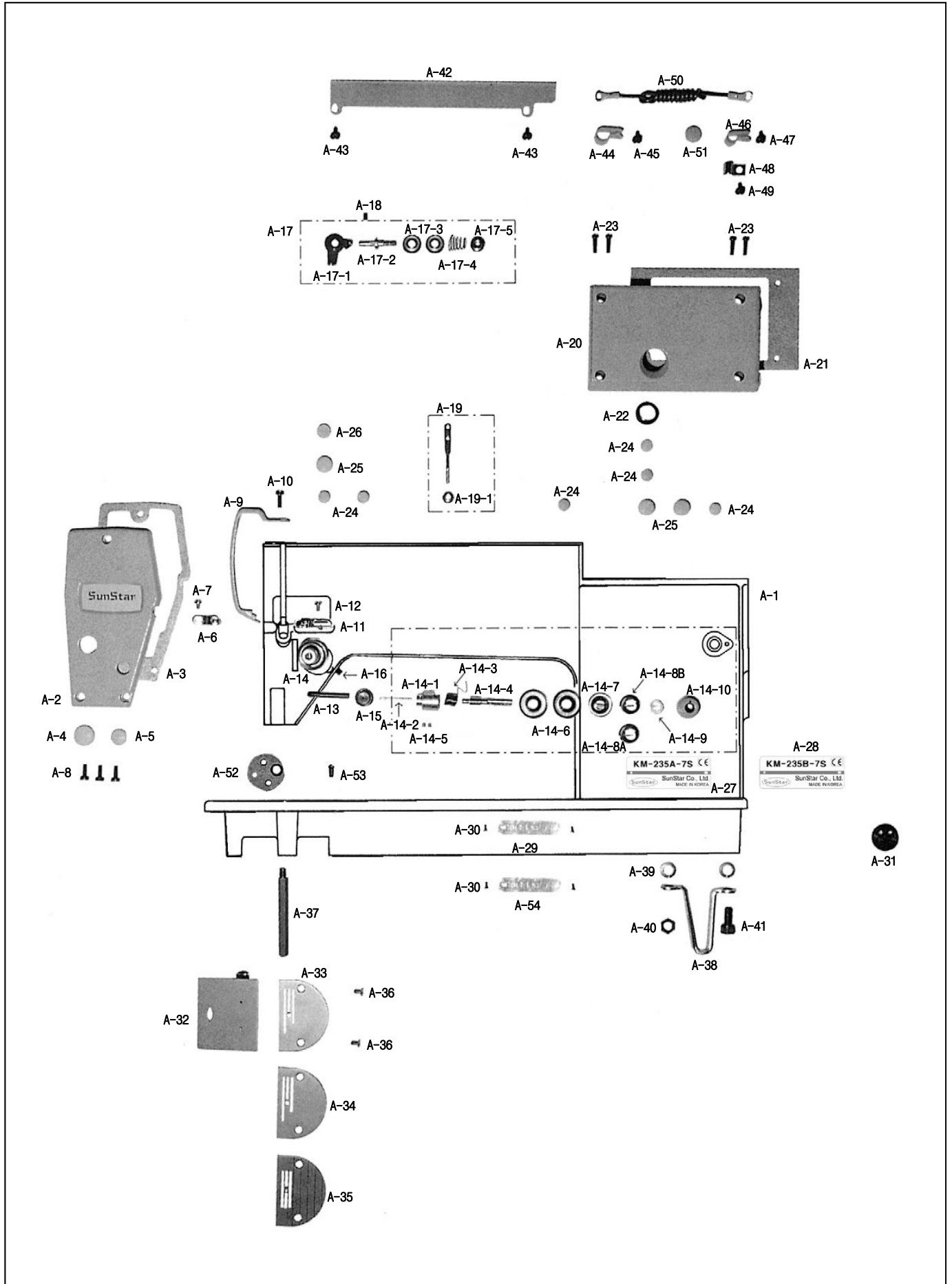
## 목 차

|   |  |    |
|---|--|----|
| A | Machine Body & Thread Tension Adjusting Mechanism<br>외장 및 실장력 조절 관계                          | 6  |
| B | Upper Shaft & Needle Bar, Thread Take-Up, Synchronizer Mechanism<br>상축, 바늘대, 실채기 & 싱크로나이저 관계 | 10 |
| C | Upright Shaft & Lower Shaft Mechanism<br>세운축 및 하축 관계   | 12 |
| D | Feed Mechanism<br>피이드 관계   | 14 |
| E | Presser Bar & Tension Release Mechanism<br>누름대 및 실 늦추기 관계                                    | 20 |
| F | Thread Trimmer Mechanism<br>사절 관계  | 24 |
| G | Reverse Button Mechanism<br>역진 보턴 관계   | 26 |
| H | Thread Wiper Mechanism<br>와이프 관계   | 28 |
| I | Lubrication Mechanism<br>급유 관계   | 30 |
| J | Accessories Mechanism<br>액세서리 관계   | 32 |
| K | Program Unit Box & Automatic Presser Foot Lifter Mechanism<br>프로그램 유닛 박스 및 자동 무릎올림 관계        | 36 |
|   | Index<br>인덱스   | 48 |

# A

## Machine Body & Thread Tension Adjusting Mechanism

### 외장 & 실장력 조절 관계





| Ref. No. | Parts No.    | Note | Name of Parts                     | 품 명                         | Q'ty | Applied Period |
|----------|--------------|------|-----------------------------------|-----------------------------|------|----------------|
| A-1      | AS-015890-12 |      | Arm. Bed Ass'y                    | 아암. 베드(조)                   | 1Set | May.09.11      |
| A-1-1    | CAB-AA004605 |      | Arm                               | 암                           | 1    | Jun.20.11      |
| A-1-2    | CAB-AB003910 |      | Bed                               | 베드                          | 1    | Jul.23.12      |
|          | CAB-AB003908 |      | Bed                               | 베드                          | 1    | May.09.11      |
|          | CAB-AB003904 |      | Bed                               | 베드                          | 1    | Jan.12.11      |
|          | CAB-AB003903 |      | Bed                               | 베드                          | 1    | Nov.28.10      |
| A-1-3    | DSC-AA003200 |      | Screw                             | 결합볼트(대)                     | 2    |                |
| A-1-4    | DSC-AA001300 |      | Screw                             | 암베드결합볼트B                    | 1    |                |
| A-1-5    | DSC-AZ000300 |      | Screw                             | 결합볼트                        | 1    |                |
| A-2      | CMB-LA018200 |      | Face Plate                        | 면판                          | 1    |                |
| A-3      | CMB-FC005901 |      | Gasket                            | 면판 패킹                       | 1    | Mar.08.12      |
| A-4      | DPK-CB000900 |      | Face Plate Rubber Cap(L)          | 면판 고무마개(대) 흰색(3-1)          | 1    |                |
| A-5      | DPK-CB000200 |      | Rubber Plug                       | 면판 고무마개(중) 흰색(3)            | 1    |                |
| A-6      | CMB-HK000101 |      | Thread Guide Left                 | 면판 실겔이                      | 1    | Dec.19.11      |
| A-7      | DSC-BA000100 |      | Screw(9/64"n=40)                  | 오일펌프 커버 나사(9/64"n=40)       | 1    |                |
| A-8      | DSC-BJ000400 |      | Screw(11/64"n=40)                 | 윗뚜껑 침나사(11/64"n=40)         | 3    |                |
| A-9      | CMB-LA018000 |      | Cover For Take Up Lever           | 실채기 커버                      | 1    |                |
| A-10     | DSC-BF003100 |      | Screw(11/64"n=40)                 | 가마잡이 나사(11/64"n=40)         | 1    |                |
| A-11     | CMB-HK000501 |      | Thread Guide For Arm              | 암 실겔이                       | 1    | Dec.19.11      |
| A-12     | DSC-BA000100 |      | Screw(9/64"n=40)                  | 오일펌프 커버 나사(9/64"n=40)       | 1    |                |
| A-13     | DPN-AA014500 |      | Tension Release Pin               | 실 늦추기 핀                     | 1    |                |
| A-14     | ATA-PS001303 |      | Tension Adjusting Apparatus Ass'y | 실 조절장치(사절용)                 | 1Set |                |
| A-14-1   | CTA-BA000200 |      | Tension Barrel                    | 실 조절장치 붓싱                   | 1    |                |
| A-14-2   | DPN-AA003800 |      | Tension Release Pin               | 사조자 핀                       | 1    |                |
| A-14-3   | DSP-BB000200 |      | Check Spring                      | 뿡뿡 스프링                      | 1    |                |
| A-14-4   | CTA-HM000500 |      | Tension Stud                      | 실 조절장치 축                    | 1    |                |
| A-14-5   | DSC-CA000200 |      | Set Screw                         | 실 조절장치 축 고정나사               | 2    |                |
| A-14-6   | CTA-HL000100 |      | Tension Disk                      | 실 안내 접시                     | 2    |                |
| A-14-7   | CTA-BJ000100 |      | Tension Release Washer            | 실 조절 스프링 받침                 | 1    |                |
| A-14-8A  | DSP-BA001000 |      | Tension Spring                    | 소라 스프링                      | 1    |                |
| A-14-8B  | DSP-BA002300 |      | Tension Spring                    | 소라 스프링                      | 1    |                |
| A-14-9   | DPK-CZ000200 |      | Ratchet                           | 실 조절장치 조절와셔                 | 1    |                |
| A-14-10  | DSN-CD000100 |      | Cap                               | 윗실 장력 조절 캡                  | 1    |                |
| A-15     | DPK-CZ000200 |      | Packing                           | 누유 방지용 캡                    | 1    |                |
| A-16     | DSC-CA000100 |      | Screw(15/64"n=28)                 | 피드캡 고정나사(15/64"n=28)        | 1    |                |
| A-17     | ATA-PS001201 |      | Supplementary Tension Ass'y       | 보조 실 조절장치(조)                | 1Set |                |
| A-17-1   | CTA-HK000200 |      | Guide Plate                       | 윗실 안내판                      | 1    |                |
| A-17-2   | CTA-HM000601 |      | Shaft                             | 보조 실 조절장치 축                 | 1    |                |
| A-17-3   | CTA-HL000300 |      | Tension Disk                      | 보조 실 조절 접시                  | 2    |                |
| A-17-4   | DSP-BA000900 |      | Spring                            | 보조 소라 스프링                   | 1    |                |
| A-17-5   | DSN-CD000400 |      | Nut                               | 보조 실 조절장치 조절 너트             | 1    |                |
| A-18     | DSC-CB000300 |      | Screw(11/64"n=40)                 | 하축 베어링 B/S 고정나사(11/64"n=40) | 1    |                |
| A-19     | CMB-HK002000 |      | Guide Bar For Thread              | 실 안내봉                       | 1    |                |
| A-19-1   | DSN-AA000100 |      | Nut                               | 세구멍 실겔이 너트                  | 1    |                |
| A-20     | CMB-LA018100 |      | Top Cover                         | 윗 뚜껑                        | 1    |                |
| A-21     | CMB-FC005800 |      | Gasket                            | 윗 뚜껑 패킹                     | 1    |                |
| A-22     | CLB-JJ001200 |      | Oil Gauge Window                  | 유창                          | 1    |                |
| A-23     | DSC-BJ005900 |      | Screw For Top Cover               | 톱커버 나사(신)                   | 4    |                |
| A-24     | DPK-CB002900 |      | Robber Plug(Small)                | 고무마개(소) 회색(5)               | 6    |                |
| A-25     | DPK-CB000200 |      | Robber Plug(Large)                | 면판 고무마개(중) 회색(3)            | 3    |                |
| A-26     | DPK-CA000100 |      | Robber Plug                       | 실 늦추기 힌지핀 고무마개              | 1    |                |
| A-27     | CMB-LD003200 | A    | Model Mark                        | 모델마크                        | 1    |                |
| A-28     | CMB-LD003500 | B    | Model Mark                        | 모델마크                        | 1    |                |
| A-29     | 01-035P-1230 |      | Machine Number Plate              | 번호판                         | 1    |                |
| A-30     | PPN-AD000100 |      | Setting Pin                       | 번호판 핀                       | 4    |                |
| A-31     | DPK-CC001000 |      | Rubber Plug For Cable             | 솔레노이드 케이블 안내 고무             | 1    |                |
| A-32     | AMB-PS001400 |      | Slide Plate Ass'y                 | 미끄럼판(조)                     | 1Set |                |

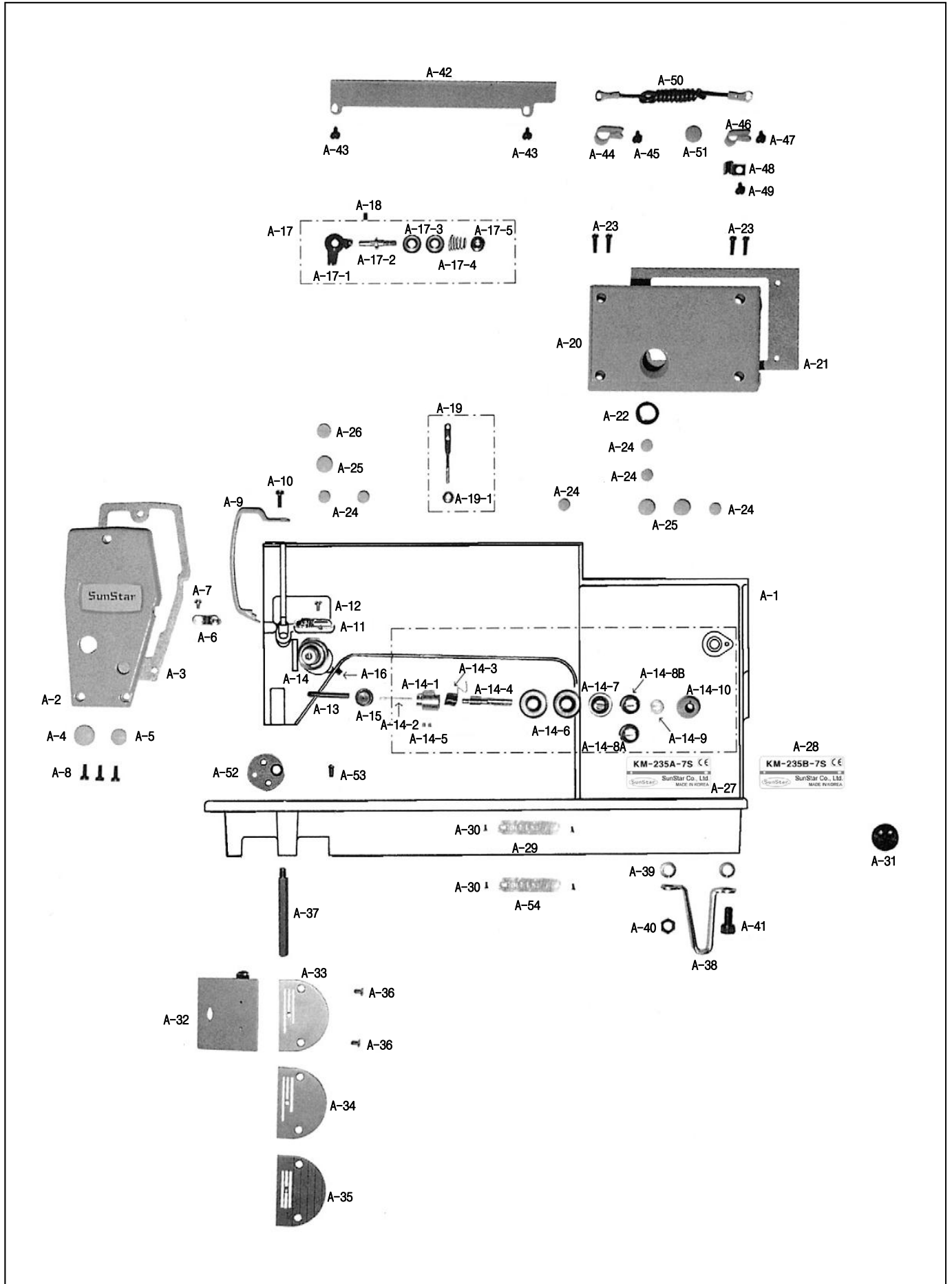
**NOTE:**

A=KM-235A  
B=KM-235B

# A

## Machine Body & Thread Tension Adjusting Mechanism

### 외장 & 실장력 조절 관계





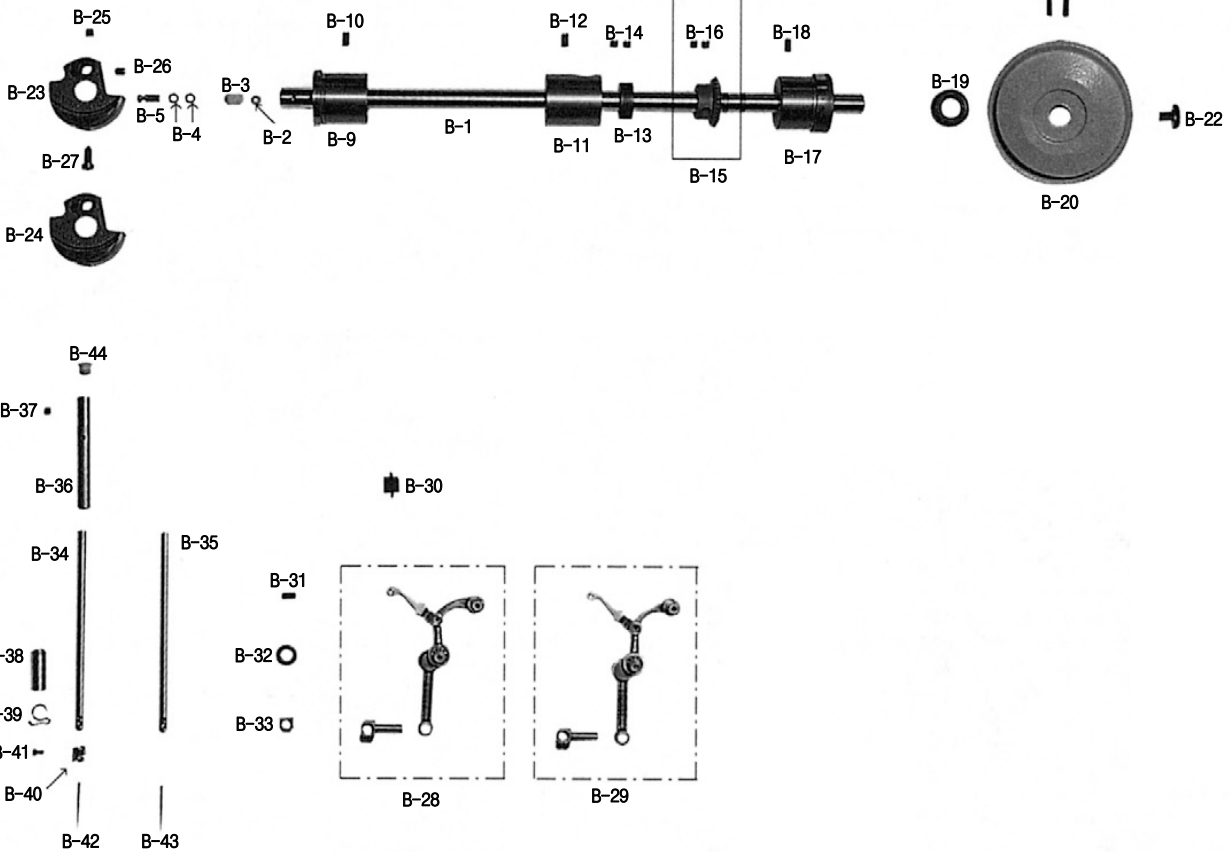
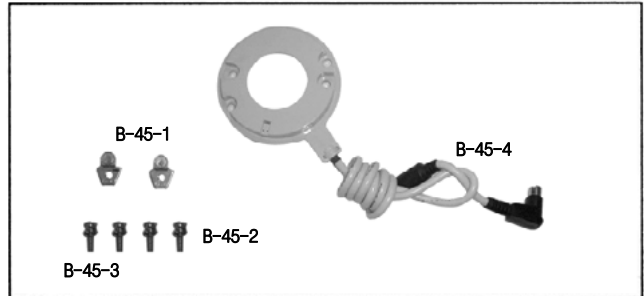


# B

## Upper Shaft, Needle Bar, Thread Take-up & Synchronizer Mechanism

상축, 바늘대, 실채기 및 싱크로나이저 관계

B-45

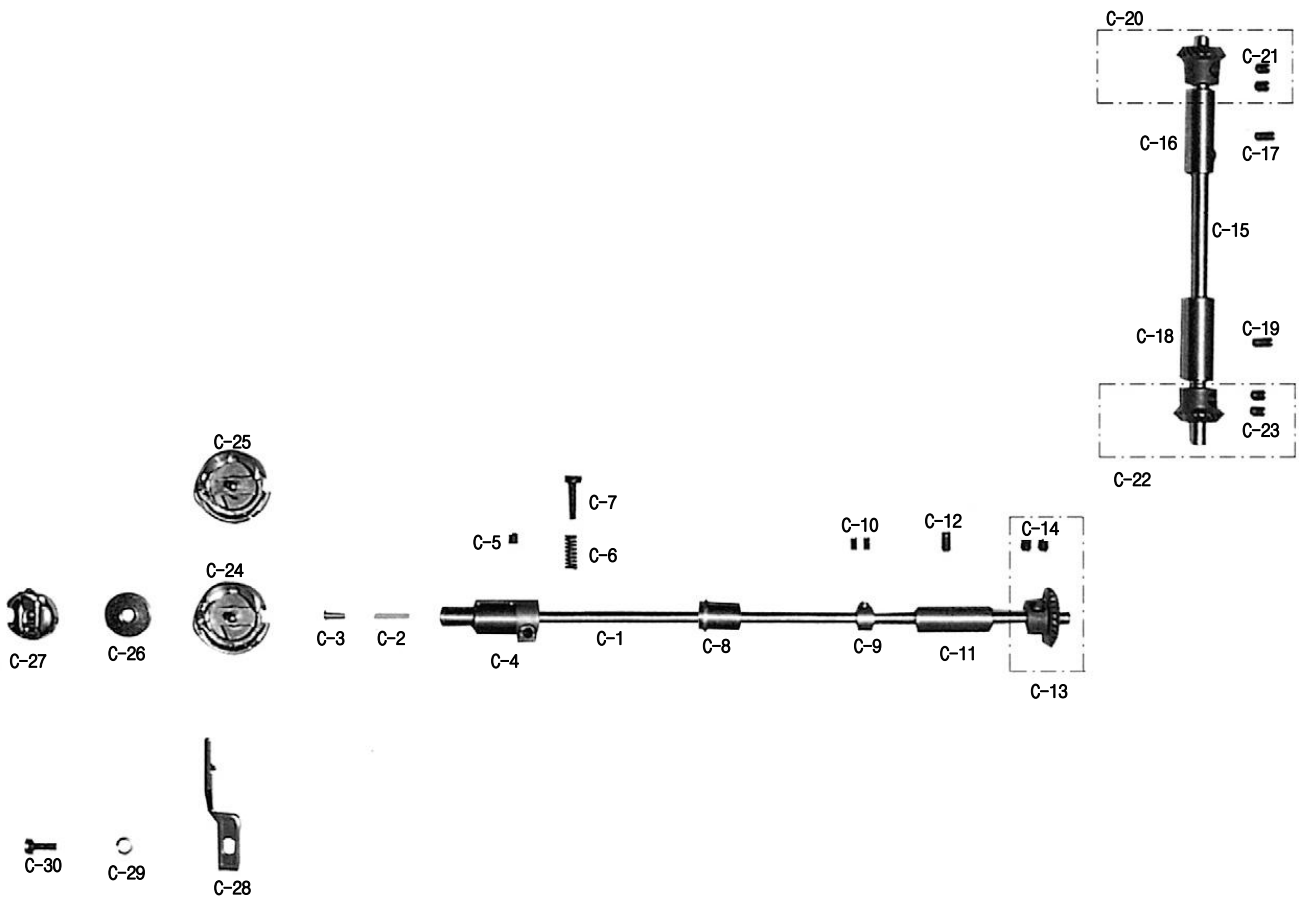




# C

## Upright Shaft & Lower Shaft Mechanism

### 세운축 및 하축 관계

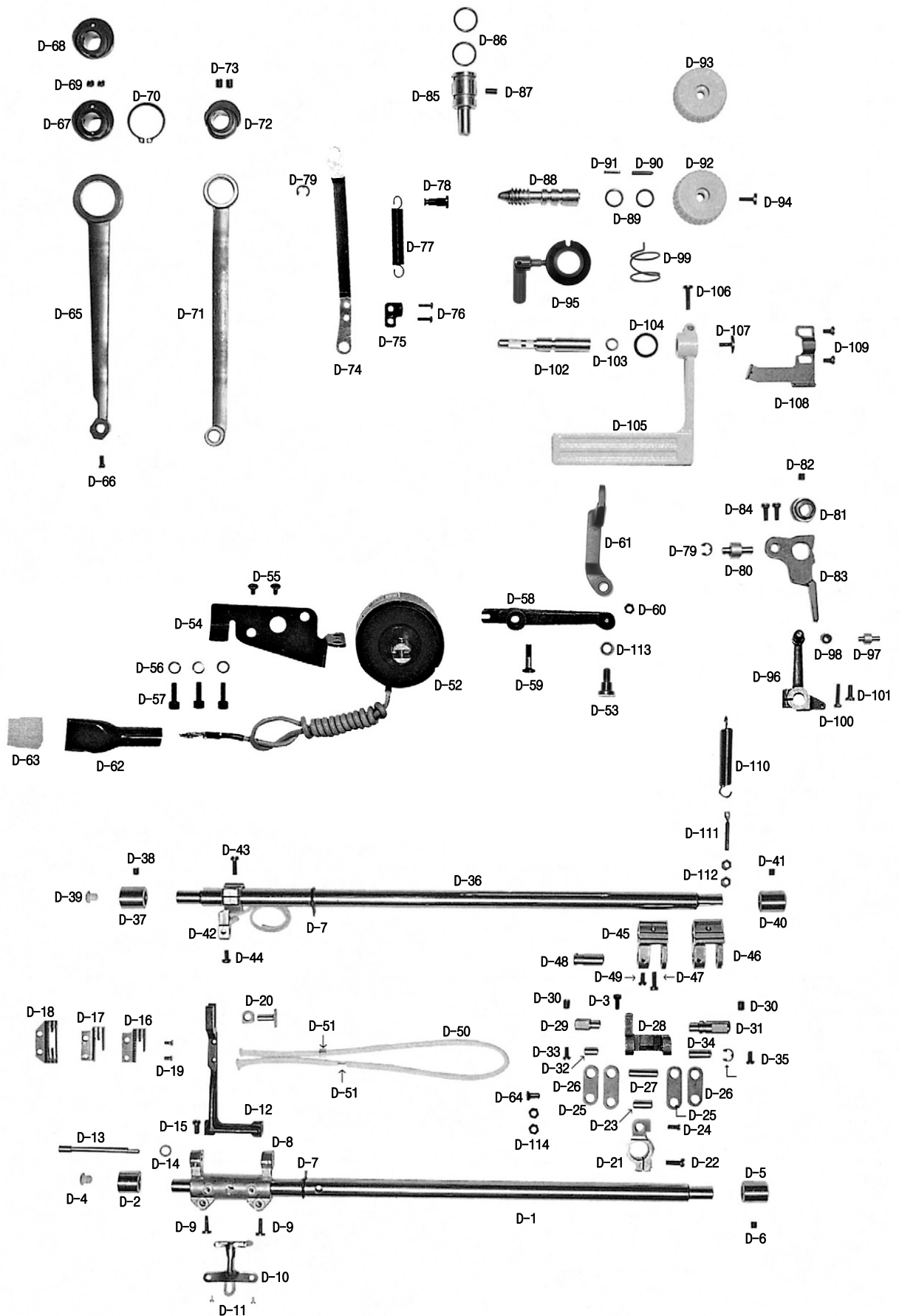




# D

## Feed Mechanism

### 피이드 관계





| Ref. No. | Parts No.    | Note | Name of Parts                     | 품 명                       | Q'ty | Applied Period |
|----------|--------------|------|-----------------------------------|---------------------------|------|----------------|
| D-1      | CLF-KF000200 |      | Feed Roker Shaft                  | 수평 밀대                     | 1    |                |
| D-2      | DBS-DA006700 |      | Bushing(Front)                    | 수평 밀대 전 붓싱                | 1    |                |
| D-3      | DSC-BF003600 |      | Screw(11/64"n=40)                 | 와이롯드 보강판 나사(11/64"n=40)   | 1    |                |
| D-4      | DPK-CB002500 |      | Rubber Cap                        | 들밀대 유심마개                  | 1    |                |
| D-5      | DBS-DA006800 |      | Rear Bushing                      | 들대 붓싱(후)                  | 1    |                |
| D-6      | DSC-CA000100 |      | Screw(15/64"n=28)                 | 피드캠 고정나사(15/64"n=28)      | 1    |                |
| D-7      | CLB-FZ000100 |      | Rubber Flange                     | 들밀대 고무마개                  | 2    |                |
| D-8      | CLF-CB000700 |      | Feed Rocker                       | 톱니 받침 크랭크                 | 1    |                |
| D-9      | DSC-BF002600 |      | Screw(3/16"n=32)                  | 톱니 받침 크랭크 접나사(3/16"n=32)  | 2    |                |
| D-10     | CLB-BG002300 |      | Retainer Plate For Oil Wick       | 심지 지지대                    | 1    |                |
| D-11     | DSC-BF007700 |      | Screw(1/8"n=44)                   | 심지 지지대 나사(1/8"n=44)       | 2    |                |
| D-12     | CLF-CR000300 |      | Feed Bar                          | 톱니 받침                     | 1    |                |
| D-13     | CLF-KH000100 |      | Feed Bar Shaft                    | 톱니 받침 축                   | 1    |                |
| D-14     | DWS-AA001500 |      | Washer                            | 톱니 받침 축 와셔                | 1    |                |
| D-15     | DSC-BF000400 |      | Screw(15/64"n=28)                 | 톱니 받침 축 고정나사(15/64"n=28)  | 1    |                |
| D-16     | CGA-GB000501 | A    | Feed Dog                          | 톱니                        | 1    |                |
| D-17     | CGA-GB001500 | B    | Feed Dog                          | 톱니                        | 1    |                |
| D-18     | GP-019000-00 |      | Feed Dog(AL-Type)                 | 톱니(박물용)                   | 1    |                |
| D-19     | DSC-BF001800 |      | Screw(1/8"n=44)                   | 톱니 접나사(1/8"n=44)          | 2    |                |
| D-20     | CLF-CD000400 |      | Sliding Block and Shaft           | 톱니 받침 블럭                  | 1    |                |
| D-21     | CLF-CB000800 |      | Crank(Rear)                       | 수평 밀대 크랭크(후)              | 1    |                |
| D-22     | DSC-AA001000 |      | Screw(3/16"n=28)                  | 들대 크랭크(전) 접나사(3/16"n=28)  | 1    |                |
| D-23     | DPN-AA000100 |      | Pin(A)                            | 피이드 연결 링크 핀(A)            | 1    |                |
| D-24     | DSC-BF006300 |      | Screw(11/64"n=40)                 | 하축 뒷 붓싱 접나사(11/64"n=40)   | 1    |                |
| D-25     | CLF-CA000200 |      | Feed Connecting Link(A)           | 피이드 연결 링크(A)              | 2    |                |
| D-26     | CLF-CA000300 |      | Feed Connecting Link(B)           | 피이드 연결 링크(B)              | 2    |                |
| D-27     | DPN-AA003900 |      | Pin(B)                            | 피이드 연결 링크 핀(B)            | 1    |                |
| D-28     | CFA-CA000300 |      | Feed Regulator Link               | 피이드 조절 링크                 | 1    |                |
| D-29     | DPN-BC001100 |      | Hinge Pin(B)                      | 피이드 조절 링크 힌지 핀(B)         | 1    |                |
| D-30     | DSC-CA001100 |      | Screw(1/4"n=40)                   | 실체기 핀 고정나사(1/4"n=40)      | 2    |                |
| D-31     | DPN-BC001000 |      | Hinge Pin(A)                      | 피이드 조절 링크 힌지 핀(A)         | 1    |                |
| D-32     | DPN-AA004000 |      | Pin(C)                            | 피이드 연결 링크 핀(C)            | 1    |                |
| D-33     | DSC-BF003600 |      | Screw(11/64"n=40)                 | 와이롯드 보강판 나사(11/64"n=40)   | 1    |                |
| D-34     | DPN-AA004100 |      | Hinge Pin                         | 피이드 조절 연결 룯드 힌지 핀         | 1    |                |
| D-35     | DSC-BF003600 |      | Screw(11/64"n=40)                 | 와이롯드 보강판 나사(11/64"n=40)   | 1    |                |
| D-36     | CLF-KF000100 |      | Feed Lifting Shaft                | 들대                        | 1    |                |
| D-37     | DBS-DA007100 |      | Front Bushing                     | 들대 붓싱(전)                  | 1    |                |
| D-38     | DSC-CA000100 |      | Screw(15/64"n=28)                 | 들대전부싱 고정나사(15/64"n=28)    | 1    |                |
| D-39     | DPK-CB002500 |      | Rubber Cap                        | 들밀대 유심마개                  | 1    |                |
| D-40     | DBS-DA006800 |      | Rear Bushing                      | 들대 붓싱(후)                  | 1    |                |
| D-41     | DSC-CA000100 |      | Screw(15/64"n=28)                 | 피드 캠 고정나사(15/64"n=28)     | 1    |                |
| D-42     | CLF-CB000500 |      | Feed Lifting Bell Arm             | 들대 크랭크(전)                 | 1    |                |
| D-43     | DSC-AA001000 |      | Screw(3/16"n=28)                  | 들대 크랭크(전) 고정나사(3/16"n=28) | 1    |                |
| D-44     | DSC-BF007900 |      | Screw(3/16"n=32)                  | 톱니 받침 블럭 고정나사(3/16"n=32)  | 1    |                |
| D-45     | CLF-CB000600 | A    | Rear Crank                        | 들대 크랭크(후)                 | 1    |                |
| D-46     | CLF-CB003100 | B    | Rear Crank                        | 들대 크랭크(후)                 | 1    |                |
| D-47     | DSC-AA001000 |      | Screw(3/16"n=28)                  | 들대 크랭크(전) 고정나사            | 1    |                |
| D-48     | DPN-AA003600 |      | Hinge Pin                         | 들밀대 크랭크 핀                 | 1    |                |
| D-49     | DSC-BF003600 |      | Screw(11/64"n=40)                 | 와이롯드 보강판 나사(11/64"n=40)   | 1    |                |
| D-50     | CLB-JD000300 |      | Oil Wick                          | 오일 심지                     | 1    |                |
| D-51     | CLB-BG005300 |      | Holder For Oil Wick               | 오일 심지 스토퍼                 | 2    |                |
| D-52     | 06-048A-2507 |      | Reverse Feed Solenoid Ass'y       | 역진 솔레노이드(SBT-5)           | 1    |                |
| D-53     | DSC-FA008600 |      | Stud Screw For Connecting Rod     | 역진 솔레노이드 연결롯드 스테드나사       | 1    |                |
| D-54     | CFA-BB000200 |      | Bracket For Reverse Feed Solenoid | 역진 솔레노이드 브라켓              | 1    |                |
| D-55     | DSC-BB001500 |      | Screw(M5×0.8)                     | 역진 솔레노이드 부착나사(M5×0.8)     | 2    |                |
| D-56     | PWS-CA000500 |      | Spring Washer For Bracket         | 싱크로 베이스 스프링 와셔(×6)        | 3    |                |
| D-57     | PSC-AC000600 |      | Screw(M6)                         | 싱크로 베이스 고정볼트(M6)          | 3    |                |

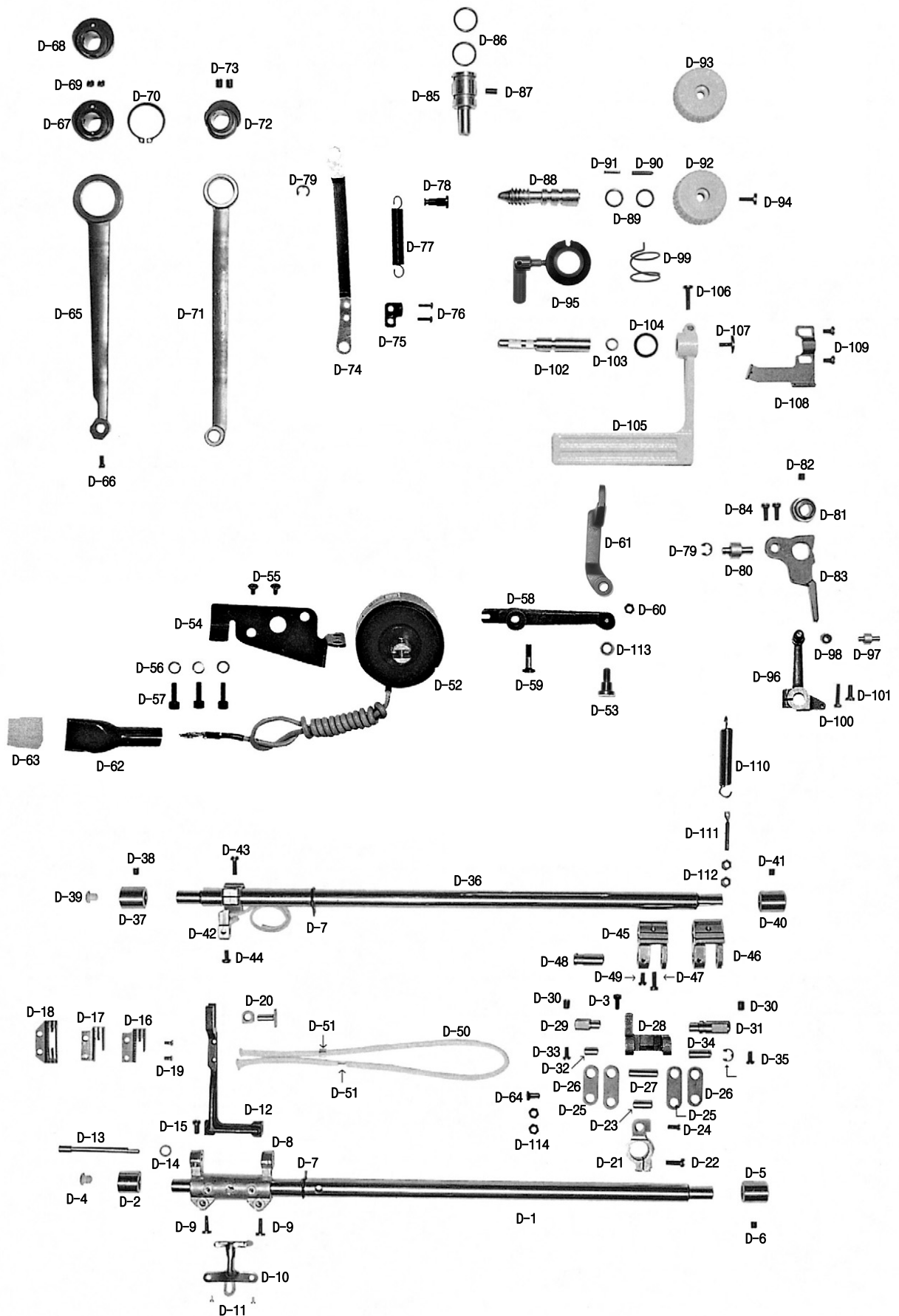
**NOTE:**

A=KM-235A  
B=KM-235B

# D

## Feed Mechanism

### 피이드 관계







| Ref. No. | Parts No.    | Note | Name of Parts                     | 품 명                          | Q'ty | Applied Period |
|----------|--------------|------|-----------------------------------|------------------------------|------|----------------|
| D-58     | CFA-CB000400 |      | Reverse Feed Solenoid Crank       | 역진 솔레노이드 크랭크                 | 1    |                |
| D-59     | DSC-FA006300 |      | Stud Screw For Solenoid Crank     | 역진 솔레노이드 크랭크 단나사             | 1    |                |
| D-60     | PSN-AA001700 |      | Hinge Nut For Connecting Rod      | 케이블 연결너트(B)                  | 1    |                |
| D-61     | CFA-CC000302 |      | Reverse Solenoid Connecting Rod   | 역진 솔레노이드 연결로드                | 1    | Apr.29.11      |
| D-62     | 11-019M-2350 |      | Tube                              | 솔레노이드 튜브                     | 1    |                |
| D-63     | 11-018M-2350 |      | Plug                              | 솔레노이드 플러그                    | 1    |                |
| D-64     | DPN-AD011300 |      | Hinge Pin For Connecting Rod      | 역진 솔레노이드 연결로드 힌지핀            | 1    |                |
| D-65     | CLF-CC000100 |      | Feed Rocker Shaft Connecting Rod  | 수평 이송 로드                     | 1    |                |
| D-66     | DSC-BF006300 |      | Screw(11/64"n=40)                 | 하측뿔 B/S 침나사(11/64"n=40)      | 1    |                |
| D-67     | CLF-DC001700 | A    | Feed Cam(A)                       | 피이드 캠(A)                     | 1    |                |
| D-68     | CLF-DC002200 | B    | Feed Cam(B)                       | 피이드 캠(B)                     | 1    |                |
| D-69     | DSC-CA001900 |      | Screw(1/4"n=40)                   | 기어나사(5-16) (1/4"n=40)        | 2    |                |
| D-70     | PSR-AA000400 |      | Stopper C-Ring                    | 스냅링(φ28)                     | 1    |                |
| D-71     | CLF-CC000200 |      | Crank Rod Complete                | 크랭크 로드                       | 1    |                |
| D-72     | CLF-DC001801 |      | Feed Cam(C)                       | 피이드 캠(C)                     | 1    | Feb.24.12      |
| D-73     | DSC-CA001100 |      | Screw(1/4"n=40)                   | 실채기 핀 고정나사(1/4"n=40)         | 2    |                |
| D-74     | CFA-CC000200 |      | Connecting Rod For Feed Regulator | 피이드 조절 로드                    | 1    |                |
| D-75     | CFA-BJ000300 |      | B/T Spring Holder                 | 자동 역진 스프링 홀더                 | 1    |                |
| D-76     | DSC-BJ000300 |      | Screw(9/64"n=40)                  | 톱카바 나사(우)(9/64"n=40)         | 2    |                |
| D-77     | DSP-AB004800 |      | Reverse Feed Spring               | 역진 레버 스프링                    | 1    |                |
| D-78     | DSC-FH000500 |      | Holder For Reverse Feed Spring    | 자동 역진 스프링 걸이                 | 1    |                |
| D-79     | PSR-AC000200 |      | E-Ring                            | E-링(φ5)                      | 3    |                |
| D-80     | CFA-KF000300 |      | Feed Adjusting Shaft              | 피이드 조절축                      | 1    |                |
| D-81     | DCL-AA002800 |      | Collar                            | 피이드 조절기 축 카라                 | 1    |                |
| D-82     | DSC-CA000500 |      | Screw(1/4"n=40)                   | 홈볼이 멈춤나사(1/4"n=40)           | 1    |                |
| D-83     | CFA-DF000101 |      | Feed Regulating                   | 피이드 조절기                      | 1    |                |
| D-84     | DSC-BF001000 |      | Screw(11/64"n=40)                 | 홈볼이 납작 작은나사(11/64"n=40)      | 2    |                |
| D-85     | CFA-KF000201 |      | Shaft                             | 피이드 조절기 축                    | 1    |                |
| D-86     | PPK-BA000800 |      | O-Ring                            | 피이드 조절기 붓싱 오링                | 2    |                |
| D-87     | DSC-CA000800 |      | Screw(15/64"n=28)                 | 상축 B/S 고정나사(15/64"n=28)      | 1    |                |
| D-88     | CFA-KJ001100 |      | Feed Regulator Dial Shaft         | 피이드 조절 다이얼축                  | 1    |                |
| D-89     | PPK-BA000900 |      | O-ring                            | 다이얼 축 오링                     | 2    |                |
| D-90     | DPN-AA014100 |      | Dial Pin                          | 다이얼 핀                        | 1    |                |
| D-91     | DSP-AA002800 |      | Feed Regulator Dial Spring        | 다이얼 스프링                      | 1    |                |
| D-92     | CFA-CQ001101 |      | Feed Regulating Dial-Insert Type  | 다이얼 판(조)                     | 1    | Apr.03.12      |
| D-93     | CFA-CQ001300 |      | Feed Regulating Dial-Insert Type  | 다이얼 판(조)                     | 1    |                |
| D-94     | DSC-BF001900 |      | Screw(3/16"n=28)                  | 다이얼 판 고정나사(3/16"n=28)        | 1    |                |
| D-95     | AFA-PS000100 |      | Dial Shaft Locker A'ssy           | 다이얼축 잠금장치(조)                 | 1Set |                |
| D-95-1   | CFA-BN000100 |      | Dial Shaft Holder                 | 다이얼축잡이                       | 1    |                |
| D-95-2   | CFA-BN000200 |      | Dial Shaft Holder Body            | 다이얼축잡이몸체                     | 1    |                |
| D-95-3   | CFA-BM000100 |      | Dial Shaft Stopper                | 다이얼축스토퍼                      | 1    |                |
| D-95-4   | CFA-CM000300 |      | Dial Shaft Stopper Handle         | 다이얼축스토퍼 손잡이                  | 1    |                |
| D-95-5   | PPN-AF001000 |      | Spring Pin                        | 스프링핀_φ2.5xL10                | 1    |                |
| D-96     | CFA-CB000300 |      | Feed Regulator Arm                | 역진 레버 크랭크(조)                 | 1Set |                |
| D-97     | DPN-BC003900 |      | Pin                               | 역진 레버 크랭크 로울러 핀              | 1    |                |
| D-98     | CFA-CL000200 |      | Roller                            | 역진 레버 크랭크 로울러 고무             | 1    |                |
| D-99     | DSP-AA005200 |      | Spring                            | 다이얼축 편심스프링                   | 1    |                |
| D-100    | DSC-BA000400 |      | Screw(3/16"n=28)                  | 수평밀대 크랭크 침나사(3/16"n=28)      | 1    |                |
| D-101    | DSC-BF003100 |      | Screw(11/64"n=40)                 | 가마잡이 나사(11/64"n=40)          | 1    |                |
| D-102    | CFA-KF000100 |      | Shaft                             | 역진 레버축                       | 1    |                |
| D-103    | PPK-BA000700 |      | Packing                           | 레버축 오링                       | 1    |                |
| D-104    | DWS-CB000200 |      | Corrugated Washer                 | 레버 와셔                        | 1    |                |
| D-105    | CFA-CM001300 |      | Reverse Feed Control Lever        | 역진 레버                        | 1    |                |
| D-106    | DSC-BA001400 |      | Screw(3/16"n=32)                  | 역진 레버 고정나사(3/16"n=32)        | 1    |                |
| D-107    | DSC-BJ002400 |      | Screw(3/16"n=32)                  | 레버 덮개 나사(3/16"n=32)          | 1    |                |
| D-108    | CFA-BB001300 |      | Stopper                           | 역진 레버 스토퍼                    | 1    |                |
| D-109    | DSC-BJ003500 |      | Screw(11/64"n=40)                 | 솔레노이드 부착 커버 고정나사(11/64"n=40) | 2    |                |

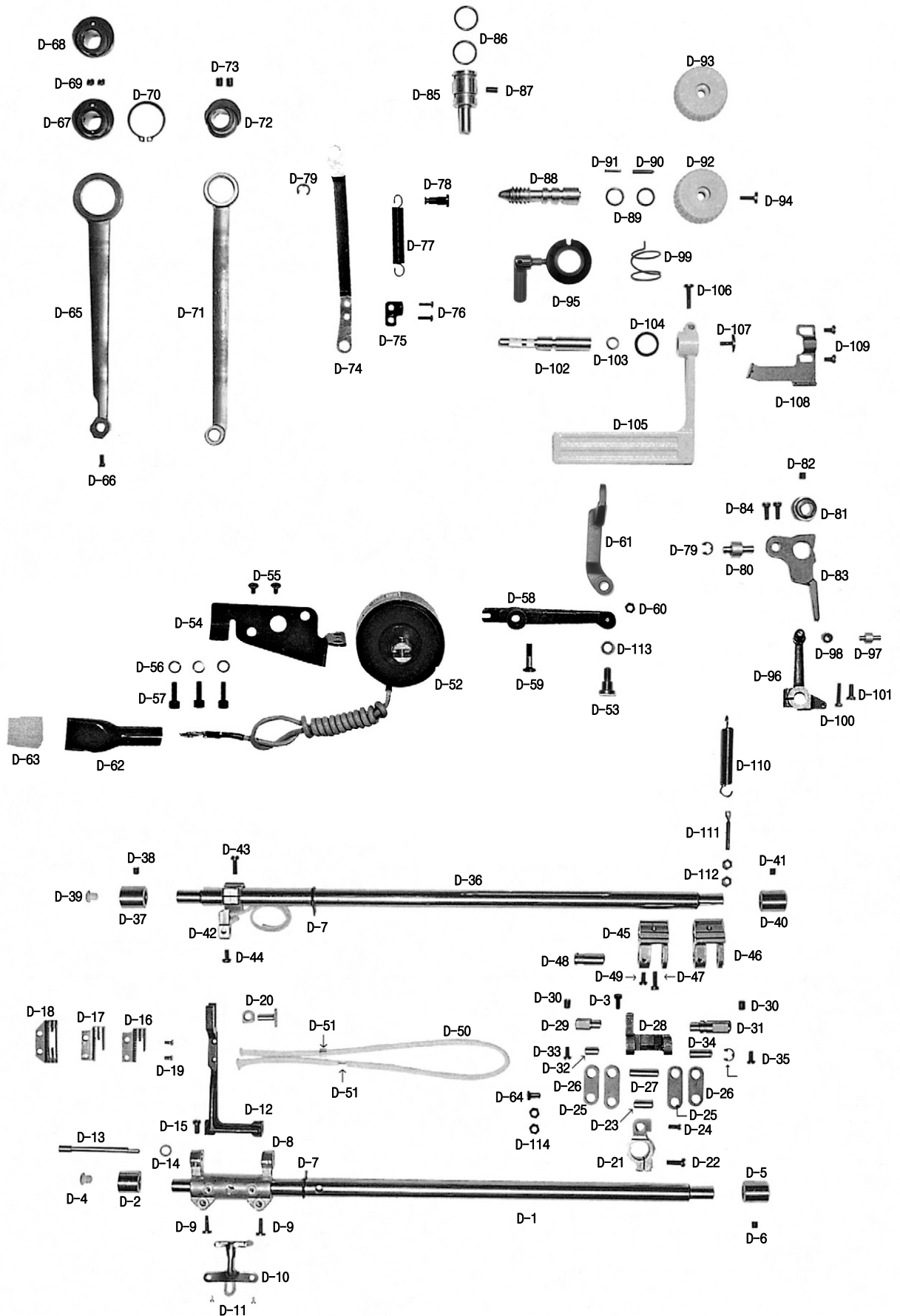
**NOTE:**

A=KM-235A  
B=KM-235B

# D

## Feed Mechanism

### 피이드 관계

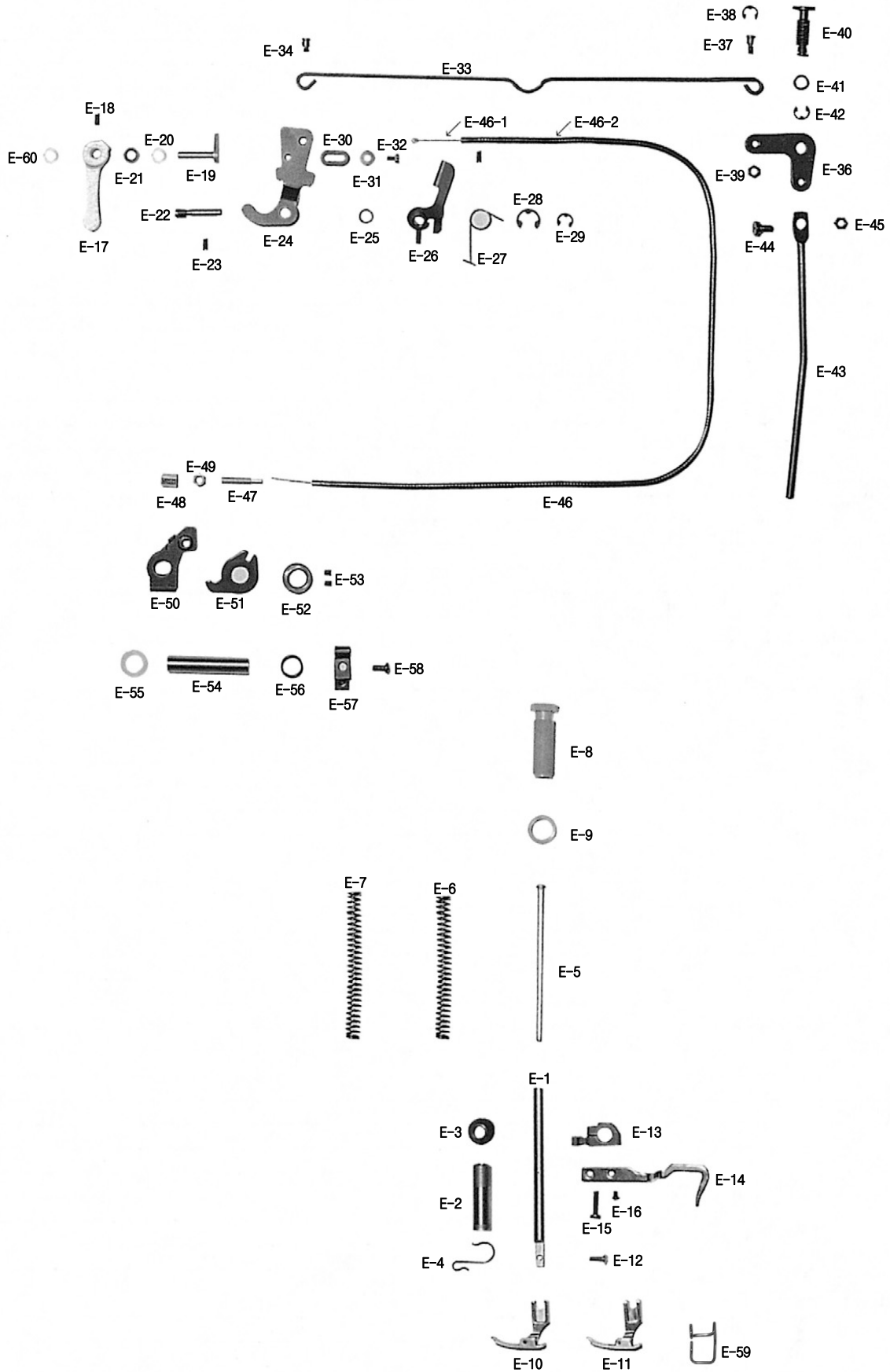




# E

## Presser Bar & Tension Release Mechanism

### 누름대 & 실 늦추기 관계





| Ref. No. | Parts No.    | Note | Name of Parts                      | 품 명                       | Q'ty | Applied Period |
|----------|--------------|------|------------------------------------|---------------------------|------|----------------|
| E-1      | CPB-KB000100 |      | Presser Bar                        | 누름대                       | 1    |                |
| E-2      | DBS-DA018200 |      | Bushing                            | 누름대 붓싱                    | 1    |                |
| E-3      | DPK-CZ000600 |      | Rubber Cap                         | 누름대 붓싱 캡                  | 1    |                |
| E-4      | CLB-BH000300 |      | Retainer For Oil Tube              | 환류 파이프 잡이                 | 1    |                |
| E-5      | CPB-KC000300 |      | Presser Regulator Bar              | 압력 조절봉                    | 1    |                |
| E-6      | DSP-AA010300 | A    | Presser Regulation Spring          | 압력 조절 스프링                 | 1    |                |
| E-7      | DSP-AA010800 | B    | Presser Regulation Spring          | 압력 조절 스프링                 | 1    |                |
| E-8      | DSC-HA000100 |      | Screw(9/16"n=20)                   | 압력 조절나사(9/16"n=20)        | 1    |                |
| E-9      | DSN-CC000100 |      | Presser Adjusting Nut              | 압력 조절나사 너트                | 1    |                |
| E-10     | CGA-GC000701 | A    | Hinged Foot Complete               | 노루발(조)                    | 1Set |                |
| E-11     | AGA-PS002200 | B    | Hinged Foot Complete               | 노루발(조)                    | 1Set |                |
| E-12     | DSC-BA000200 |      | Screw(9/64"n=40)                   | 홈볼이 냄비 작은나사(9/64"n=40)    | 1    |                |
| E-13     | CPB-BF000400 |      | Holder                             | 누름대 잡이                    | 1    |                |
| E-14     | CPB-HK000101 |      | Thread Guide For Frame             | 실걸이 판                     | 1    |                |
| E-15     | DSC-BF001200 |      | Screw(11/64"n=40)                  | 가마잡이 나사(11/64"n=40)       | 1    |                |
| E-16     | DSC-BJ001400 |      | Screw(9/64"n=40)                   | 윗뚜껑 고정판 고정나사(9/64"n=40)   | 1    |                |
| E-17     | CPB-CM000300 |      | Presser Bar Lifter Lever           | 누름대 올리기                   | 1    |                |
| E-18     | DSC-BJ000300 |      | Screw(11/64"n=40)                  | 톱니 커버 나사(우)               | 1    |                |
| E-19     | CPB-DF000700 |      | Cam Shaft                          | 누름대 올리기 캠축                | 1    |                |
| E-20     | DWS-AA003800 |      | Felt Washer                        | 상축 felt 와셔                | 1    |                |
| E-21     | DWS-AA003800 |      | Washer                             | 실 낮추기 축 와셔                | 1    |                |
| E-22     | CTR-KC000500 |      | Shaft                              | 실 낮추기 축                   | 1    |                |
| E-23     | DSC-CB000300 |      | Screw(11/64"n=40)                  | 하축 중 베어링 고정나사(11/64"n=40) | 2    |                |
| E-24     | CPM-CM002300 |      | Knee Lifter Plate                  | 노루발 인상판                   | 1    |                |
| E-25     | PWS-AA003500 |      | Washer                             | 실 낮추기 축 와셔                | 1    |                |
| E-26     | ATR-PS000200 |      | Thread Tension Release Plate       | 실 낮추기(조)                  | 1    |                |
| E-27     | DSP-AC005800 |      | Spring                             | 실 낮추기 스프링                 | 1    |                |
| E-28     | PSR-AC000800 |      | E-Ring                             | 실 낮추기 안내 붓싱 E링(φ8)        | 1    |                |
| E-29     | PSR-AC000200 |      | E-Ring                             | E-링(φ5)                   | 1    |                |
| E-30     | CTR-BB001100 |      | Stopper                            | 실 낮추기 스토퍼                 | 1    |                |
| E-31     | DWS-AA000500 |      | Washer                             | 실 낮추기 스토퍼 와셔              | 1    |                |
| E-32     | DSC-AA003300 |      | Screw(9/64"n=40)                   | 실 낮추기 스토퍼 첩나사(9/64"n=40)  | 1    |                |
| E-33     | CPM-BH000900 |      | Connecting Rod                     | 누름대 올리기 연결봉               | 1    |                |
| E-34     | SC-001912-00 |      | Hinge Screw For Knee Lifter Plate  | 누름대 올리기 연결봉 단나사           | 1    |                |
| E-36     | CPM-CA001700 |      | Knee Lifting Link                  | 무릎 올림 링크                  | 1    |                |
| E-37     | DSC-FF002300 |      | Hinge Screw                        | 누름대 올리기 연결봉 단나사(대)        | 1    |                |
| E-38     | PSR-AC000200 |      | E-Ring                             | E-링(φ5)                   | 1    |                |
| E-39     | DSN-AA000600 |      | Nut(3/16"n=32)                     | 오픈너 너트(3/16"n=32)         | 1    |                |
| E-40     | DSC-FH000900 |      | Hinge Screw                        | 무릎 올림 링크 한지나사             | 1    |                |
| E-41     | PPK-BA000500 |      | O-Ring                             | 역진 레버 축 오링                | 1    |                |
| E-42     | PSR-AC000200 |      | E-Ring                             | E-링(φ5)                   | 1    |                |
| E-43     | CPM-CR000901 |      | Knee Lifting Rod                   | 무릎 올림 봉                   | 1    |                |
| E-44     | DSC-FA018800 |      | Hinge Screw                        | 무릎 올림 봉 단나사               | 1    |                |
| E-45     | DSN-AA000600 |      | Nut(3/16"n=32)                     | 오픈너 너트(3/16"n=32)         | 1    |                |
| E-46     | ATR-PS000300 |      | Tension Release Cable              | 실 낮추기 케이블(조)              | 1Set |                |
| E-46-1   | AS-000042-00 |      | Wire Rope                          | 와이어 로우프                   | 1    |                |
| E-46-2   | AS-000042-00 |      | Cable                              | 실 낮추기 케이블                 | 1    |                |
| E-47     | DSC-HZ001100 |      | Connecting Bolt                    | 케이블 연결 볼트                 | 1    |                |
| E-48     | DSN-AA002400 |      | Nut(A)                             | 케이블 연결 너트(A)              | 1    |                |
| E-49     | PSN-AA001700 |      | Nut(B)                             | 케이블 연결 너트(B)              | 1    |                |
| E-50     | CTR-CM001200 |      | Operating Lever For Thread Release | 실 낮추기 작동 레버               | 1    |                |
| E-51     | CTR-CM001300 |      | Cam Driving Lever                  | 캠 접촉 레버                   | 1    |                |
| E-52     | DCL-AA008200 |      | Collar                             | 캠 접촉 카라                   | 1    |                |
| E-53     | DSC-CB000700 |      | Screw(M5)                          | 캠 접촉 카라 고정나사(M5)          | 1    |                |
| E-54     | CTR-BQ000200 |      | Pipe For Thread Release Lever      | 실 낮추기 레버 파이프              | 1    |                |
| E-55     | DWS-AA016700 |      | Flat Washer                        | 평 와셔                      | 1    |                |
| E-56     | PPK-BA000900 |      | O-Ring                             | 오링(P11)                   | 1    |                |

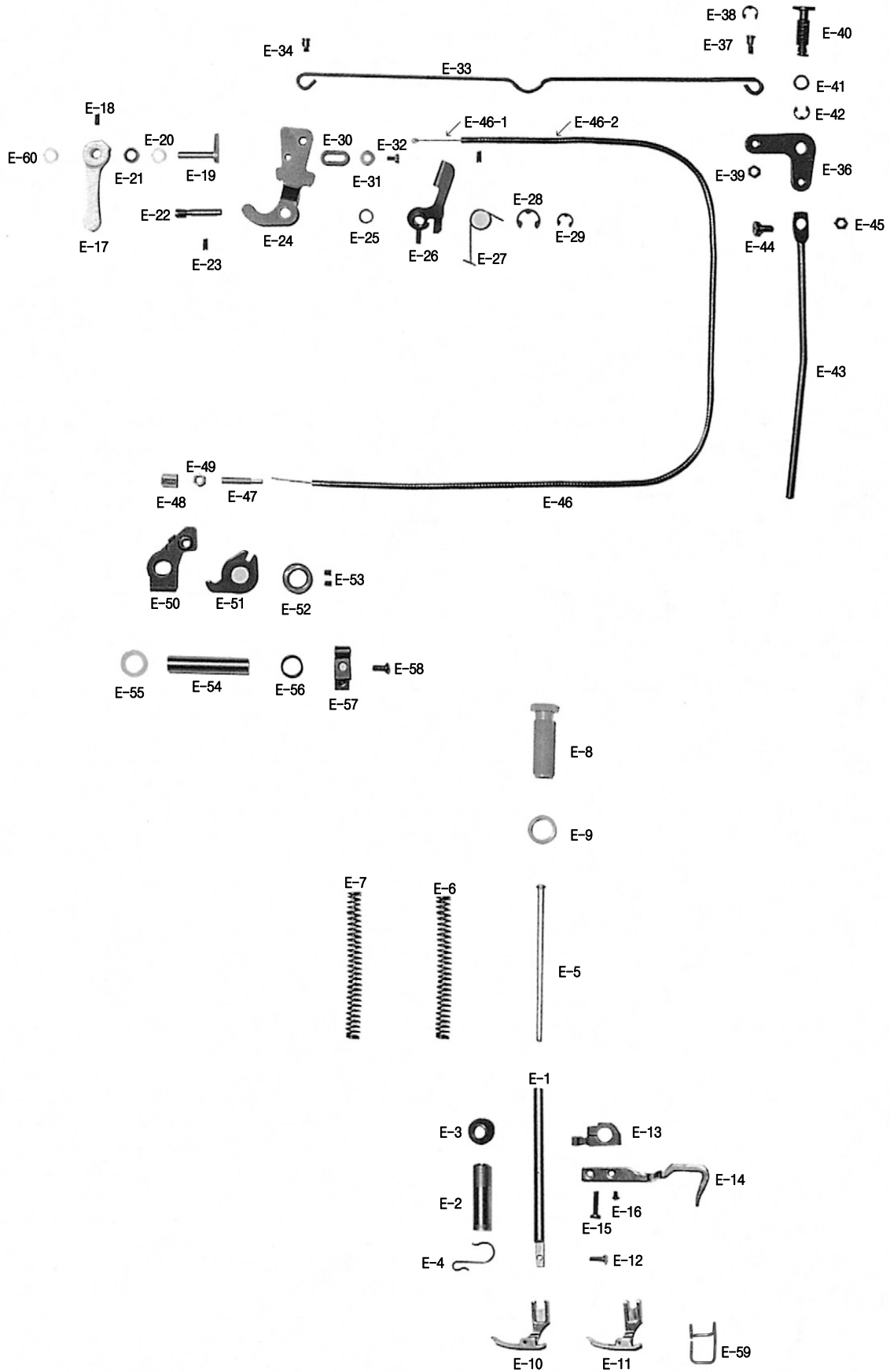
**NOTE:**

A=KM-235A  
B=KM-235B

# E

## Presser Bar & Tension Release Mechanism

### 누름대 & 실 늦추기 관계

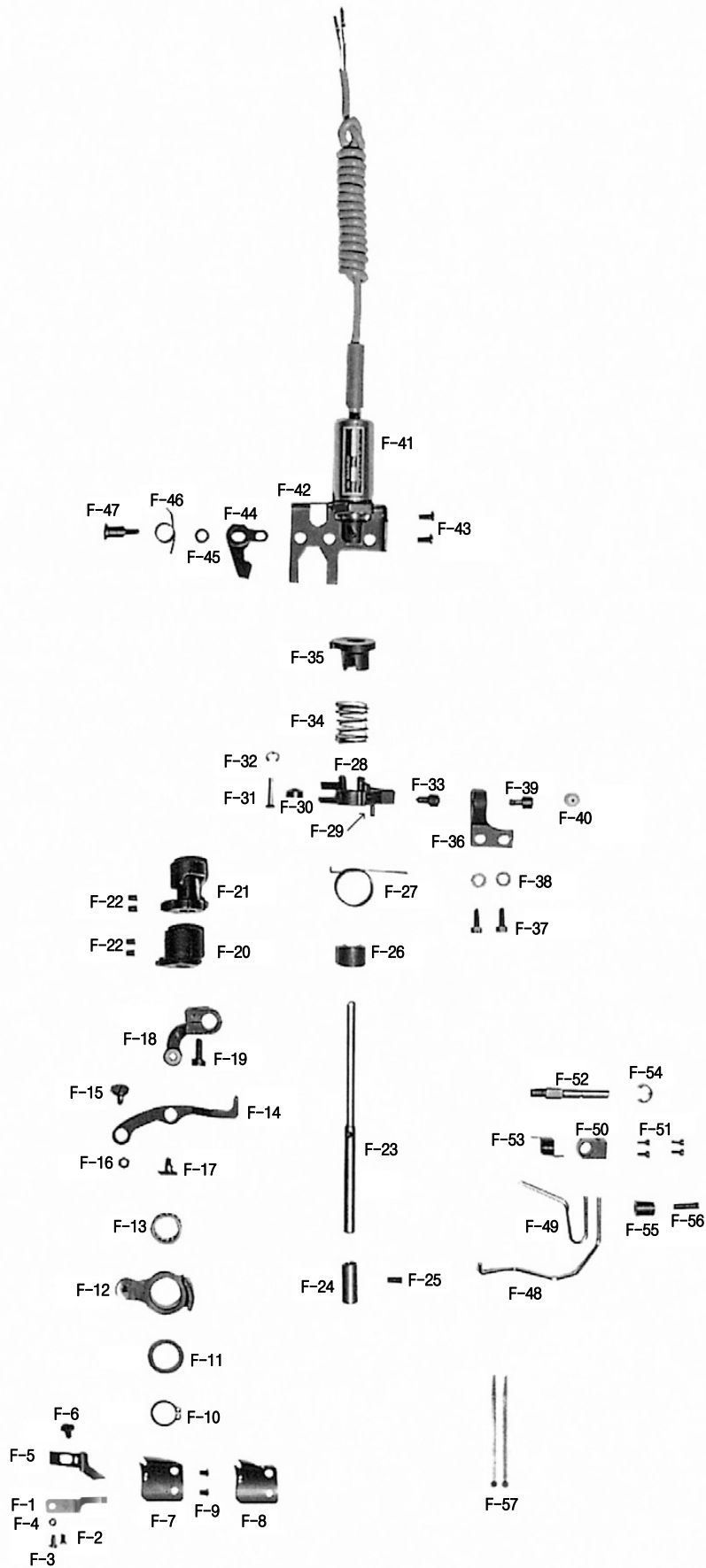




# F

## Thread Trimmer Mechanism

### 사절 관계







| Ref. No. | Parts No.    | Note | Name of Parts                | 품 명                         | Q'ty | Applied Period |
|----------|--------------|------|------------------------------|-----------------------------|------|----------------|
| F-1      | CTT-NB000901 |      | Fixed Mes                    | 고정메스                        | 1    |                |
| F-2      | DSC-BB002000 |      | Screw(9/64"n=40)             | 고정메스 고정나사(9/64"n=40)        | 1    |                |
| F-3      | DSC-BF006200 |      | Screw(1/8"n=40)              | 고정메스 장력 조절나사(1/8"n=40)      | 1    |                |
| F-4      | DSN-AA001700 |      | Nut(1/8"n=40)                | 고정메스 장력 조절나사 너트(1/8"n=40)   | 1    |                |
| F-5      | CTT-BJ001100 |      | Thread Detachable Plate      | 실 가리개                       | 1    |                |
| F-6      | DSC-BJ003500 |      | Screw(11/64"n=40)            | 솔레노이드 부착 커브 고정나(11/64"n=40) | 1    |                |
| F-7      | CTT-NA000600 | A    | Rotary Mes                   | 회전메스                        | 1    |                |
| F-8      | CTT-NA001000 | B    | Rotary Mes                   | 회전메스                        | 1    |                |
| F-9      | DSC-BB001400 |      | Screw(11/64"n=40)            | 회전메스 고정나사(11/64"n=40)       | 2    |                |
| F-10     | PSR-AA000100 |      | Stopper C-Ring               | 스냅링(Φ15)                    | 1    |                |
| F-11     | DWS-AA005100 |      | Washer                       | 사절 홀더 와셔                    | 1    |                |
| F-12     | CTT-BF001700 |      | Holder                       | 사절 홀더                       | 1    |                |
| F-13     | PBR-BA001200 |      | Needle Bearing               | 니들 베어링                      | 1    |                |
| F-14     | CTT-CA001701 |      | Connecting Link              | 연결 링크                       | 1    | Mar.07.12      |
| F-15     | DSC-FA019400 |      | Pivot Screw                  | 연결 링크 단나사(대)                | 1    |                |
| F-16     | DSN-AA000900 |      | Nut(11/64"n=40)              | S/P 절이축 나사 너트(11/64"n=40)   | 1    |                |
| F-17     | DSC-FA019300 |      | Pivot Screw                  | 연결 링크 단나사(소)                | 1    |                |
| F-18     | CTT-CM002900 |      | Thread Trimmer Lever         | 사절 레버                       | 1    |                |
| F-19     | DSC-BF000700 |      | Screw(15/64"n=28)            | 베이스 고정나사 B(15/64"n=28)      | 1    |                |
| F-20     | CTT-DF000501 |      | Reversal Cam                 | 역전캠(K1895)                  | 1    | Dec.29.10      |
| F-21     | DGR-AA003002 |      | Thread Trimmer Gear Assembly | 사절 기어(조)                    | 1set | Aug.09.11      |
|          | DGR-AA003001 |      | Thread Trimmer Gear Assembly | 사절 기어(조)                    | 1set | Feb.01.11      |
| F-22     | DSC-CB000500 |      | Screw(15/64"n=28)            | 캠 접촉안내 고정나사(15/64"n=28)     | 4    |                |
| F-23     | CTT-KF000700 |      | Thread Trimmer Shaft         | 사절 축                        | 1    |                |
| F-24     | DBS-DA020000 |      | Bushing                      | 사절 축 붓싱                     | 1    |                |
| F-25     | DSC-CA000800 |      | Screw(15/64"n=28)            | 상축 B/S 고정나사(15/64"n=28)     | 1    |                |
| F-26     | CTT-BN000500 |      | Spring Guide                 | 스프링 안내                      | 1    |                |
| F-27     | DSP-AC006401 |      | Spring                       | 스토퍼 레버 스프링                  | 1    | Oct.24.11      |
| F-28     | CTT-CM003100 |      | Stopper Lever                | 스토퍼 레버                      | 1    |                |
| F-29     | PPN-AF003000 |      | Stopper Pin                  | 스토퍼 핀(3×14)                 | 1    |                |
| F-30     | DCL-BB002500 |      | Collar                       | 스토퍼 레버 카라                   | 1    |                |
| F-31     | DPN-AD009200 |      | Collar Shaft                 | 스토퍼 레버 카라 축                 | 1    |                |
| F-32     | PSR-AC000300 |      | Stop Ring                    | 인상판 E링(Φ4)                  | 1    |                |
| F-33     | DSC-AC002200 |      | Screw(1/4"n=40)              | 스토퍼 레버 고정나사(1/4"n=40)       | 1    |                |
| F-34     | DSP-AA010400 |      | Spring                       | 사절구동기어(B)스프링                | 1    |                |
| F-35     | DGR-AA003101 |      | Thread Trimmer Gear "B"      | 사절구동기어(B)(K1896)            | 1    | Feb.01.11      |
| F-36     | CTT-BB002900 |      | Stopper                      | 스토퍼(K1886)                  | 1    |                |
| F-37     | DSC-AA003000 |      | Screw(3/16"n=32)             | 스토퍼 짐나사(3/16"n=32)          | 2    |                |
| F-38     | DWS-AA000600 |      | Washer                       | 스토퍼 짐 와셔                    | 2    |                |
| F-39     | CTT-FD000300 |      | Cushion Rubber (A)           | 스토퍼 쿠션 고무                   | 1    |                |
| F-40     | CTT-FZ000100 |      | Cushion Rubber               | 쿠션 고무                       | 1    |                |
| F-41     | 10-044A-2700 |      | Trimmer Solenoid Assembly    | 사절 솔레노이드(조)                 | 1Set |                |
| F-42     | CTT-BB003100 |      | Solenoid Base                | 솔레노이드 받침                    | 1    |                |
| F-43     | DSC-BA000700 |      | Screw(3/16"n=32)             | 톱니 받침 블럭 고정나사(3/16"n=32)    | 2    |                |
| F-44     | CTT-CM003000 |      | Clutch Lever                 | 클러치 레버                      | 1    |                |
| F-45     | DWS-AA000600 |      | Washer                       | 스토퍼 짐 와셔                    | 1    |                |
| F-46     | DSP-AC006500 |      | Spring                       | 클러치 스프링                     | 1    |                |
| F-47     | DSC-FA019000 |      | Pivot Screw                  | 클러치 레버 단나사                  | 1    |                |
| F-48     | CTT-BH000101 |      | Bobbin Presser Bar           | 보빈 압력봉                      | 1    |                |
| F-49     | CTT-BH000600 |      | Lever                        | 레버                          | 1    |                |
| F-50     | CTT-BF000200 |      | Holder                       | 레버잡이                        | 1    |                |
| F-51     | DSC-BF000100 |      | Screw(1/8"n=44)              | 바늘대 실걸이 짐나사(1/8"n=44)       | 4    |                |
| F-52     | DSC-HC000400 |      | Bed Leg Rear                 | 베드 받침(전)                    | 1    |                |
| F-53     | DSP-AC001700 |      | Spring                       | 보빈 압력 스프링                   | 1    |                |
| F-54     | PSR-AC000500 |      | E-Ring(Φ6)                   | E링(Φ6)                      | 1    |                |
| F-55     | CTT-FD000100 |      | Stopper Rubber               | 보빈 압력봉 스토퍼                  | 1    |                |
| F-56     | DSC-CA001500 |      | Screw(15/64"n=28)            | 풀리 고정나사(15/64"n=28)         | 1    |                |

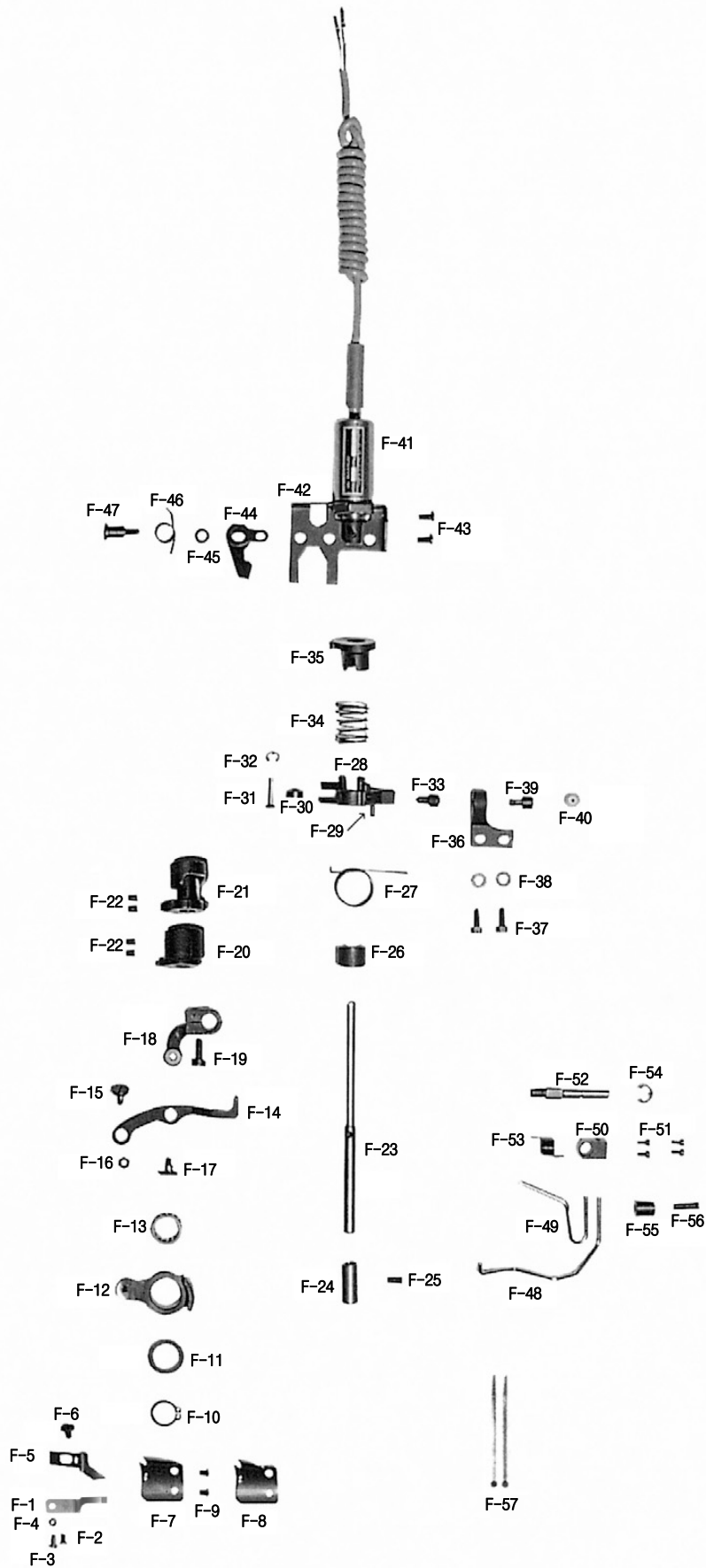
**NOTE:**

A=KM-235A  
B=KM-235B

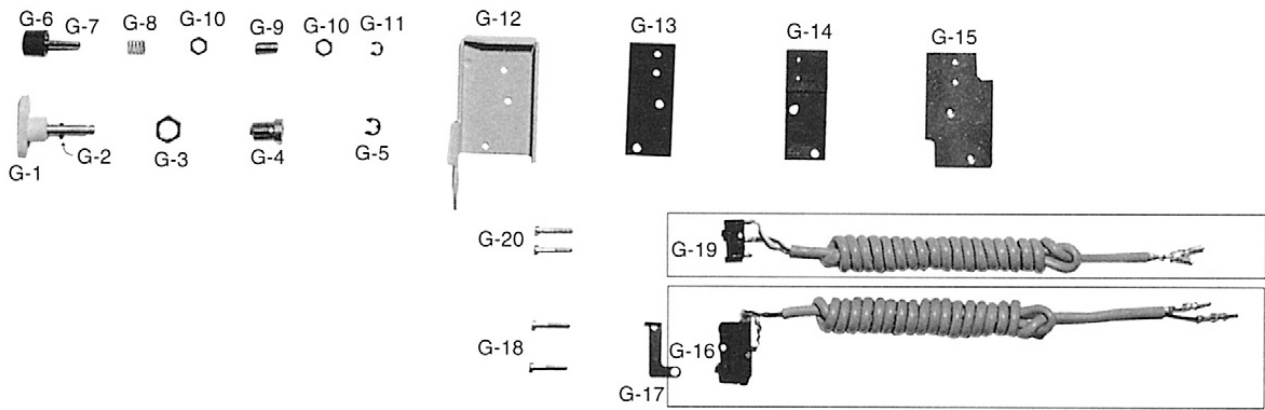
# F

## Thread Trimmer Mechanism

### 사절 관계





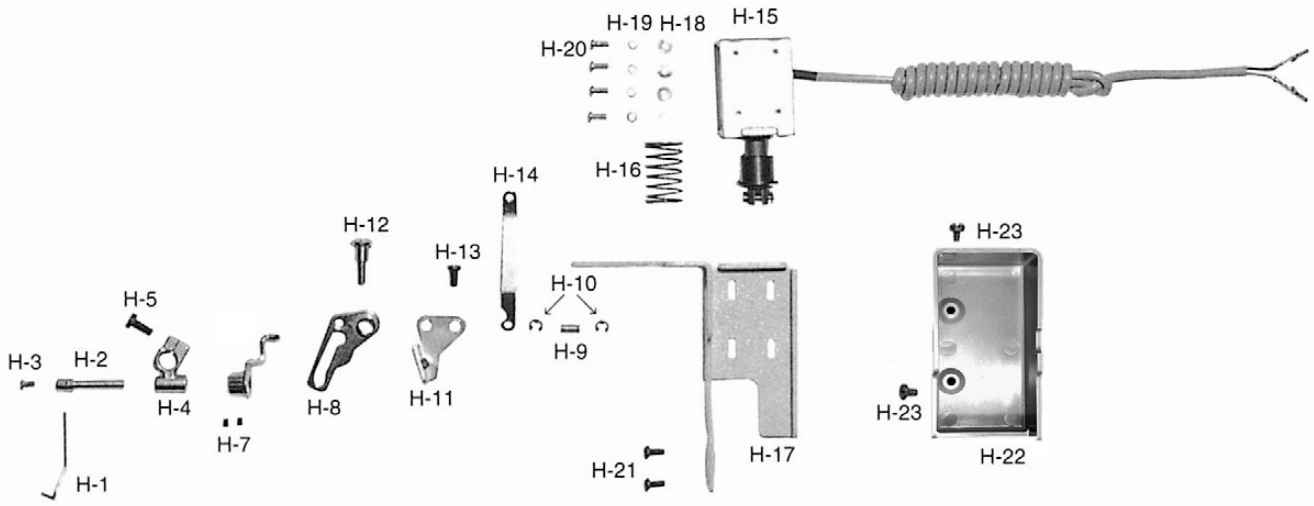






# Thread Wiper Mechanism

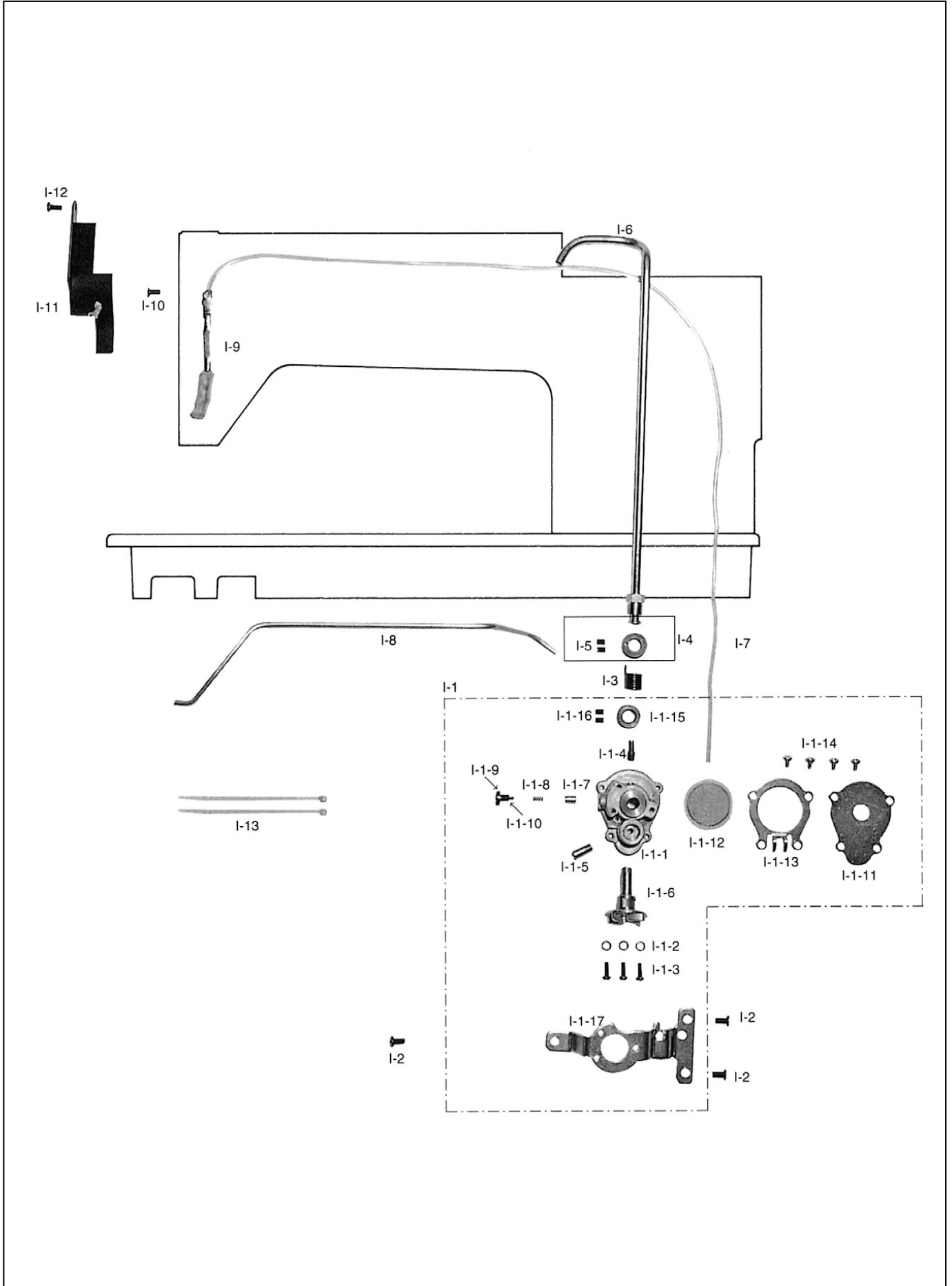
와이퍼 관계





# Lubrication Mechanism

## 급유 관계



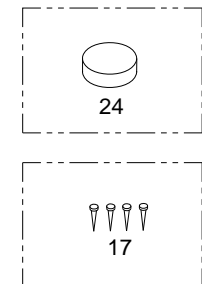
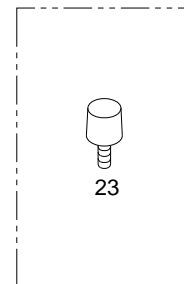
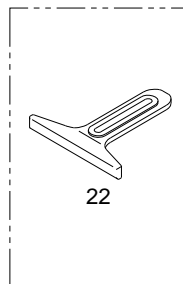
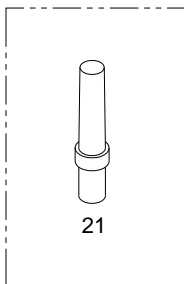
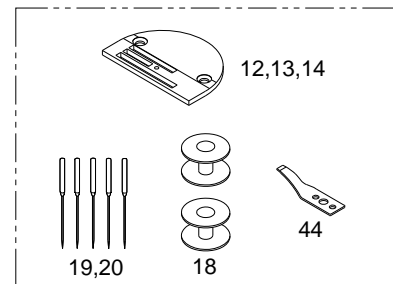
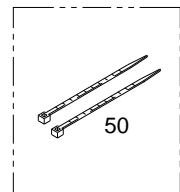
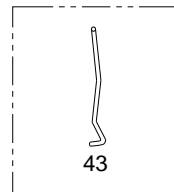
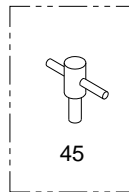
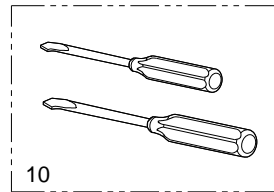
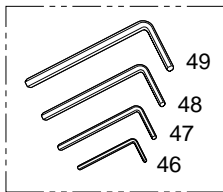
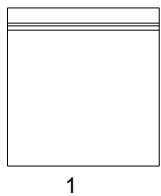
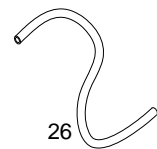
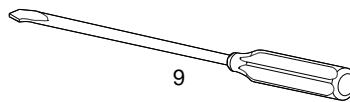
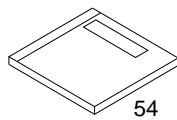
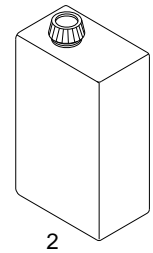
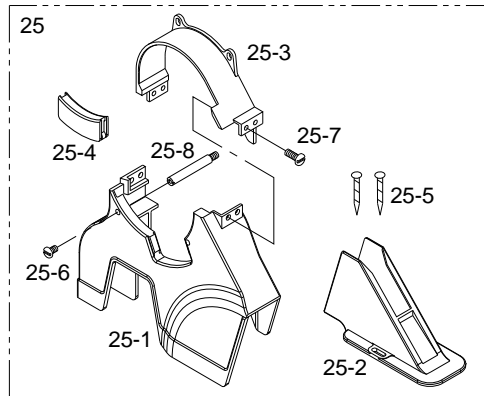
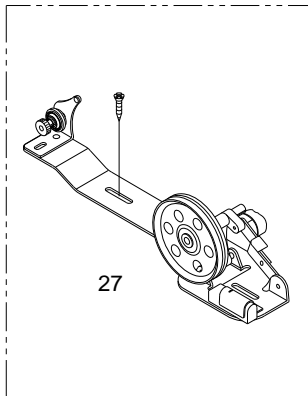
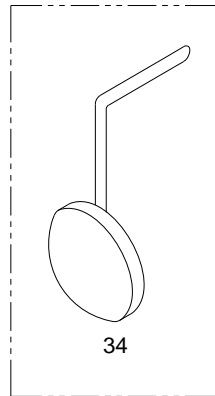
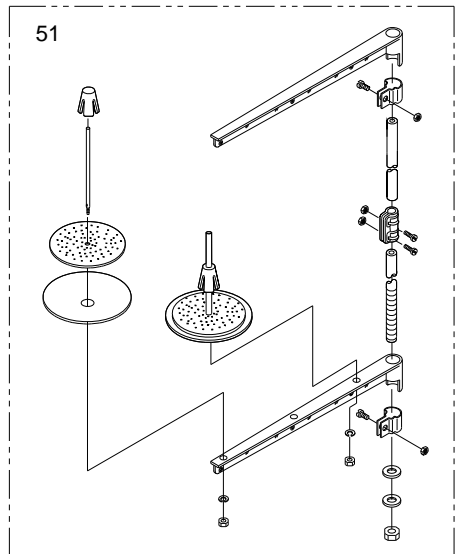
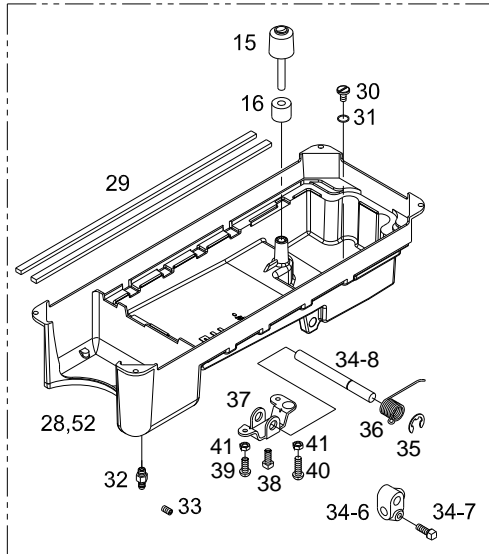
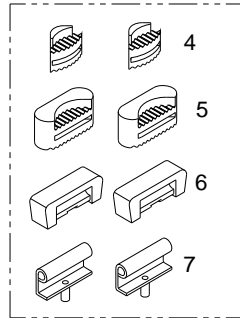
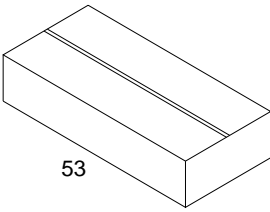




# J

## Accessories Mechanism

### 액세서리 관계





| Ref. No. | Parts No.    | Note   | Name of Parts                                      | 품 명                        | Q'ty | Applied Period |
|----------|--------------|--------|--|----------------------------|------|----------------|
| J-1      | CAC-MH000100 |        | Accessory Box                                      | 악세서리 박스                    | 1    |                |
| J-2      | CAC-MD000300 |        | Oil  | 오일 캔                       | 1    |                |
| J-3      | CAC-JB000100 |        | Oil Tank   | 유차                         | 1    |                |
| J-4      | CST-FD001200 |        | Head Support Rubber "B"                            | 현지 고무(소)                   | 2    |                |
| J-5      | CST-FD001100 |        | Head Support Rubber "A"                            | 현지 고무(중)                   | 2    |                |
|          | GP-052071-00 | Option | Head Support Rubber "A"(Full Submerged Type Table) | 현지 고무(중)(내림 테이블)           | 2    |                |
| J-6      | CST-FF000400 |        | Rubber Cushion For Hinge                           | 현지 고무(대)                   | 2    |                |
| J-7      | CST-BB002500 |        | Head Hinge   | 현지                         | 2    |                |
| J-8      | CAC-MA000500 |        | Sewing Machine Cover                               | 미싱커버(대)                    | 1    |                |
| J-9      | PTL-BA000100 |        | Driver(Large)                                      | 드라이버(대)                    | 1    |                |
| J-10     | PTL-BA000200 |        | Driver(Middle, Small)                              | 드라이버(중, 소)                 | 1    |                |
| J-12     | CGA-GA000201 | A      | Needle Plate                                       | 침판                         | 1    | Jun.18.12      |
| J-13     | CGA-GA002001 | B      | Needle Plate                                       | 침판                         | 1    | Jun.18.12      |
| J-14     | CGA-GA003200 |        | Needle Plate(AL-Type)                              | 침판(박물용)                    | 1    |                |
| J-15     | CST-CR000500 |        | Knee Base Rubber                                   | 무릎 올림봉 받침캡                 | 1    |                |
| J-16     | DPK-DC000300 |        | Cap  | 오일팬 누유 방지 고무               | 1    |                |
| J-17     | -            |        | Nail   | 못                          | 12   |                |
| J-18     | CHK-HB000600 |        | Bobbin   | 보빈                         | 2    |                |
| J-19     | -            | A      | Needle   | 바늘 A형                      | 1    |                |
| J-20     | -            | B      | Needle   | 바늘 B형                      | 1    |                |
| J-21     | CST-CR000100 |        | Head Support Pole                                  | 미싱 받침대                     | 1    |                |
| J-22     | CMB-BJ008000 |        | Cloth Guide  | 정규                         | 1    |                |
| J-23     | DSC-BG000300 |        | Screw(9/64"n=40)                                   | 홈볼이 바인딩 작은나사(9/64"n=40)    | 1    |                |
| J-24     | DTC-AK000300 |        | Magnet   | 자석                         | 1    |                |
| J-25     | 60-101A-2350 |        | Belt Cover Ass'y(Only For Trimming M/C)            | 벨트커버(조)-사절                 | 1Set |                |
| J-25-1   | CMB-LA019600 |        | Belt Cover(A)                                      | 벨트커버(A)                    | 1    |                |
| J-25-2   | CMB-LA019500 |        | Belt Cover(B)                                      | 벨트커버(B)                    | 1    |                |
| J-25-3   | CMB-LA019700 |        | Belt Cover(C)                                      | 벨트커버(C)                    | 1    |                |
| J-25-4   | CMB-LA019800 |        | Belt Cover(D)                                      | 벨트커버(D)                    | 1    |                |
| J-25-5   | PSC-DD000100 |        | Screw  | 목나사                        | 2    |                |
| J-25-6   | DSC-BF001200 |        | Screw(11/64"n=40)                                  | 가마잡이 나사(11/64"n=40)        | 2    |                |
| J-25-7   | DSC-BJ000200 |        | Screw(11/64"n=40)                                  | 홈볼이 둥근 작은나사(11/64"n=40)    | 6    |                |
| J-25-8   | DSC-HB002500 |        | Screw For Belt Cover                               | 벨트커버 지지나사                  | 2    |                |
| J-26     | CLB-JG000300 |        | Oil Return Tube                                    | 환류 파이프                     | 1    |                |
| J-27     | AAC-PS000102 |        | Bobbin Winder Ass'y                                | 실감기(조)                     | 1    |                |
| J-28     | CST-JA000800 | A      | Oil Pan  | 오일 팬                       | 1    |                |
| J-29     | CAC-MG000300 |        | Oil Pan Gasket                                     | 오일 팬 가스켓                   | 2    |                |
| J-30     | DSC-BF006100 |        | Screw(M8x1.25)                                     | 배유구멍 마개 나사(M8x1.25)        | 1    |                |
| J-31     | CST-FB000200 |        | Packing  | 배유 구멍마개 나사 오링              | 1    |                |
| J-32     | CLB-JP002500 |        | Oil Pan Nipple                                     | 오일 팬 니플                    | 1    |                |
| J-33     | DSC-CA003500 |        | Screw(15/64"n=28)                                  | 피드캠 칩나사(15/64"n=28)        | 1    |                |
| J-34     | 43-101A-1600 |        | Knee Lifting Ass'y                                 | 무릎 올림(조)                   | 1set |                |
| J-34-6   | CST-CB000300 |        | Knee Lifter Arm Joint Complete                     | 무릎 받침 연결 크랭크               | 1    |                |
| J-34-7   | DSC-CC000100 |        | Screw(5/16"n=18)                                   | 무릎 받침 축 고정나사(5/16"n=18)    | 2    |                |
| J-34-8   | CST-KC001200 |        | Shaft  | 제어체 축                      | 1    |                |
| J-35     | PSR-AC000100 |        | E-Ring(φ9)   | 제어체 축 링(E링φ9)              | 1    |                |
| J-36     | DSP-AC005600 |        | Spring   | 제어체 스프링                    | 1    |                |
| J-37     | CST-BB002900 |        | Knee Lifting Controller                            | 제어체                        | 1    |                |
| J-38     | DSC-AA000300 |        | Screw(15/64"n=28)                                  | 포크 칩나사                     | 1    |                |
| J-39     | DSC-BA002700 |        | Screw(15/64"n=28)                                  | 제어체 운동조절 나사(중)(15/64"n=28) | 1    |                |
| J-40     | DSC-BA002800 |        | Screw(15/64"n=28)                                  | 제어체 운동조절 나사(대)(15/64"n=28) | 1    |                |
| J-41     | DSN-AA000400 |        | Nut(15/64"n=28)                                    | 수평운동 릿드 단나사 너(15/64"n=28)  | 2    |                |
| J-43     | CWP-BH001100 |        | Wiper  | 와이퍼                        | 1    |                |
| J-44     | CTT-NB000901 |        | Fixed Mes  | 고정 메스                      | 1    |                |
| J-45     | DTL-CC000100 |        | Box Spanner  | 고정 메스 장력 조절용 스패너           | 1    |                |
| J-46     | PTL-AB000100 |        | Wrench(2mm)  | 렌치(2mm)                    | 1    |                |
| J-47     | PTL-AB000300 |        | Wrench(2.5mm)                                      | 렌치(2.5mm)                  | 1    |                |

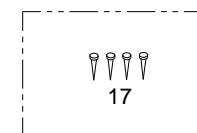
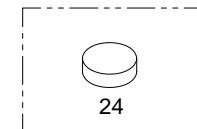
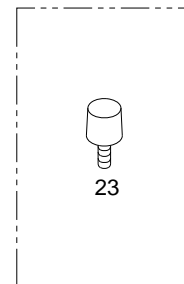
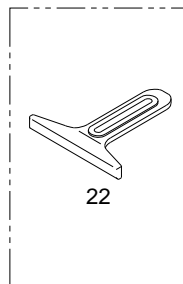
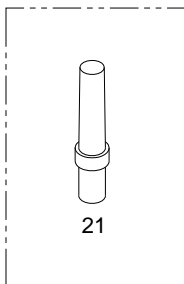
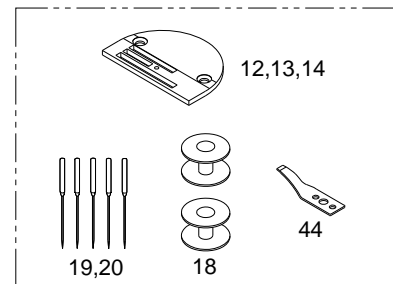
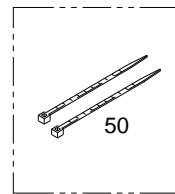
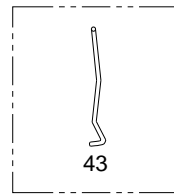
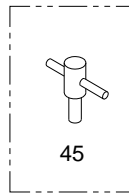
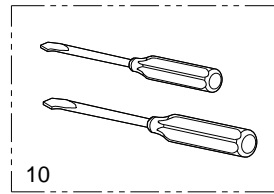
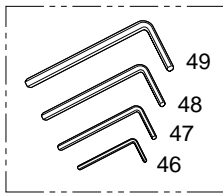
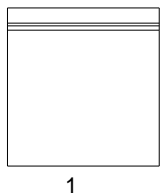
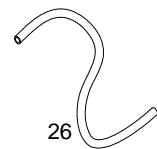
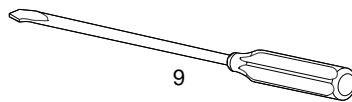
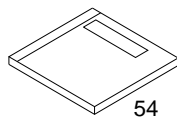
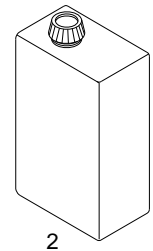
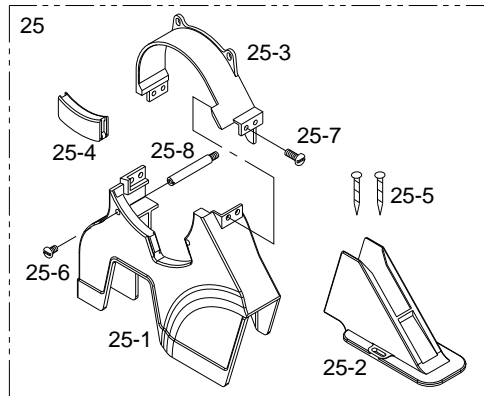
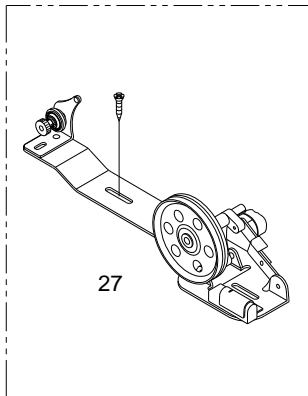
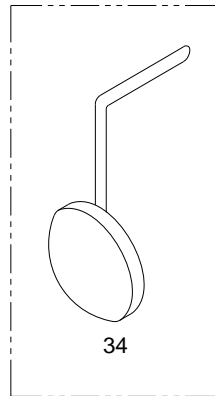
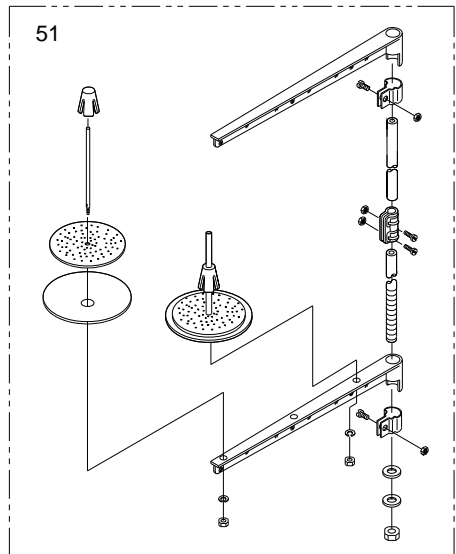
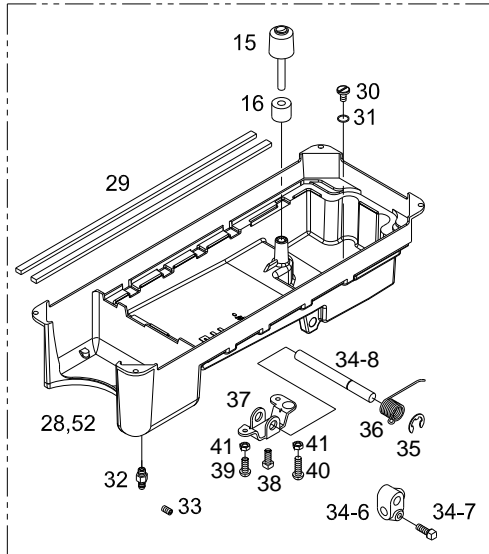
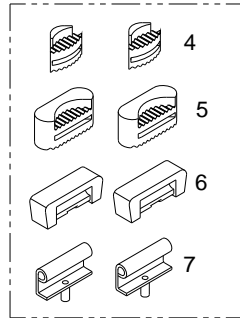
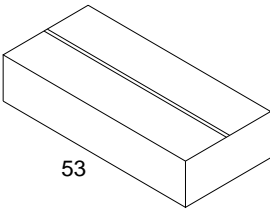
**NOTE:**

A=KM-235A  
B=KM-235B

# J

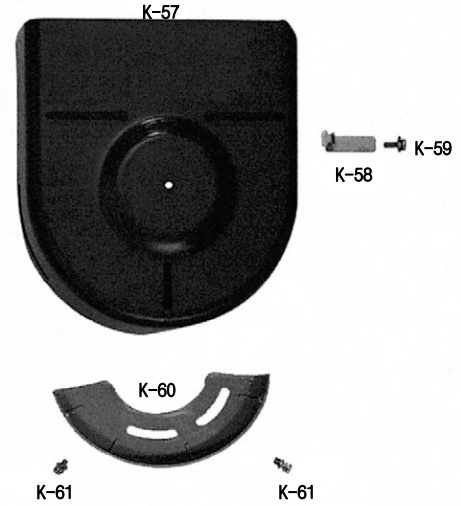
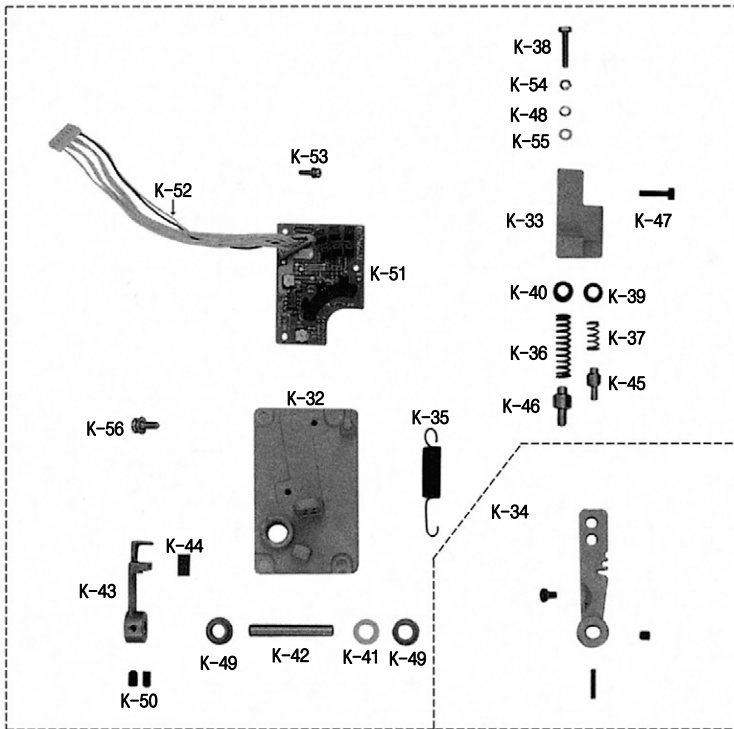
## Accessories Mechanism

### 액세서리 관계

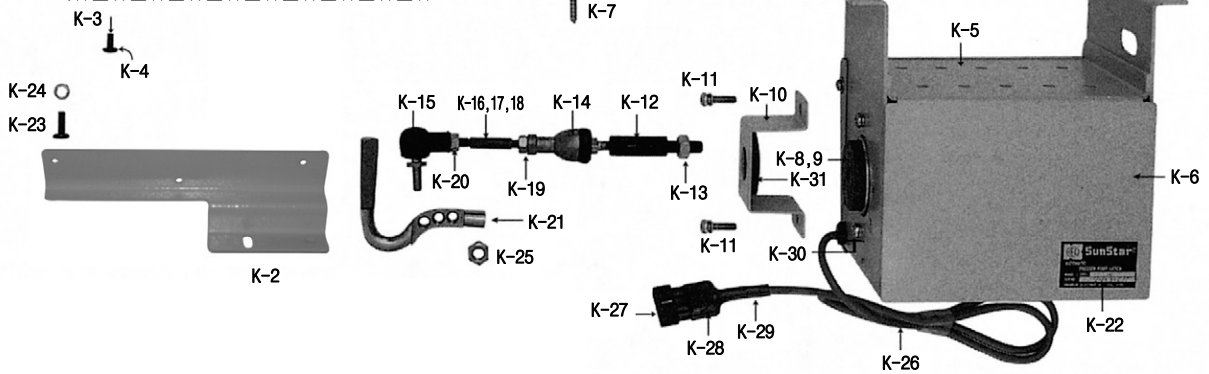
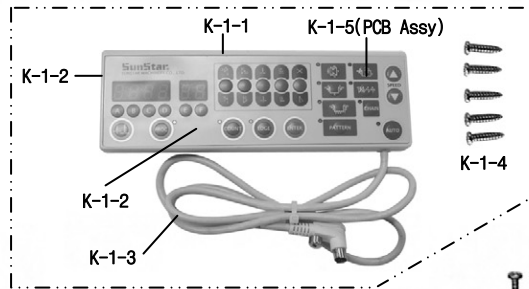




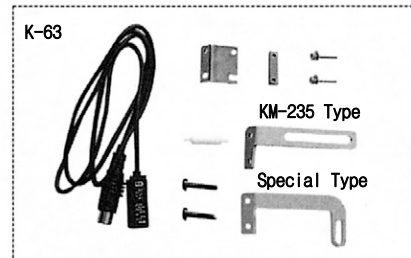
K-62



K-1



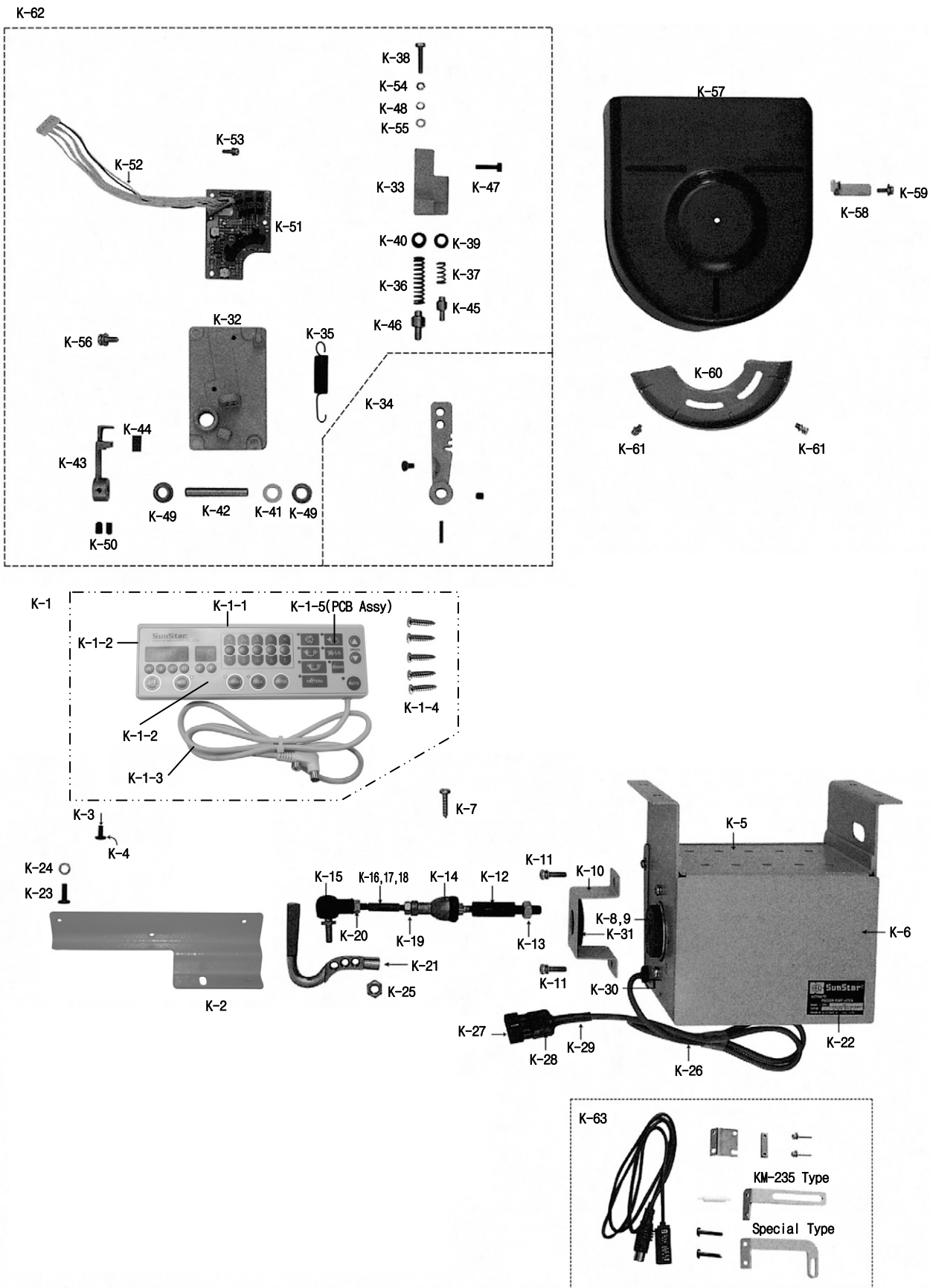
K-63



| Ref. No. | Parts No.    | Note | Name of Parts                              | 품 명                | Q'ty | Applied Period |
|----------|--------------|------|--|--------------------|------|----------------|
| K-1      | EE-001523-00 |      | S-5 P/U B/D Ass'y                          | S-5 P/U 보드 Ass'y   | 1Set |                |
| K-1-1    | GP-024743-00 |      | Front cover                                | 전면 커버              | 1    |                |
| K-1-2    | GP-024747-00 |      | Membrane Switch                            | 멤브레인 스위치           | 1    |                |
| K-1-3    | CA-000479-00 |      | P/U Connector Cable(SE-013)                | P/U 연결 케이블(SE-013) | 1    |                |
| K-1-4    | 30-001M-SE55 |      | Screw For P/U Box                          | M3*16 플랜지 붙이 고정나사  | 5    |                |
| K-1-5    | BD-000255-04 |      | P/U PCB Ass'y                              | P/U PCB Ass'y      | 1Set | Jun.26.12      |
| K-1-6    | GP-024744-00 |      | Rear cover                                 | 후면 커버              | 1    |                |
| K-2      | GP-051355-00 |      | Bracket For Program Unit Box(KM-235)       | 브라켓                | 1    |                |
| K-3      | 91-029S-1000 |      | Screw For P/U Box                          | 고정나사               | 1    |                |
| K-4      | 91-029S-1000 |      | Screw For P/U Box(Special)                 | 고정나사               | 1    |                |
| K-5      | 18-107B-9000 |      | Auto Knee Lifter Solenoid Case             | 자동 무릎올림 솔레노이드 케이스  | 1    |                |
| K-6      | 18-018B-9000 |      | Auto Knee Lifter Solenoid Cover            | 자동 무릎올림 솔레노이드 커버   | 1    |                |
| K-7      | 91-027B-3000 |      | Screw For C-9 Bracket                      | 고정나사               | 1    |                |
| K-8      | -            |      | Shaft(B) For Solenoid                      | 축(A)               | 1    |                |
| K-9      | -            |      | Shaft(A) For Solenoid                      | 축(B)               | 1    |                |
| K-10     | 18-109B-9000 |      | Fixing Plate For Stroke                    | 고정판                | 4    |                |
| K-11     | 01-134C-1701 |      | Screw                                      | 고정나사               | 1    |                |
| K-12     | 18-011B-5607 |      | Solenoid Shaft Connecting Rod.             | 연결로드               | 1    |                |
| K-13     | 18-019S-5607 |      | Nut  | 너트                 | 4    |                |
| K-14     | 18-021A-5607 |      | Ball Joint(Right)                          | 조인트(우)             | 1    |                |
| K-15     | 18-020A-5607 |      | Ball Joint(Left)                           | 조인트(좌)             | 1    |                |
| K-16     | 18-018B-5607 |      | Middle Connecting Bar(KM-235)              | 중간 연결 바(KM-235)    | 1    |                |
| K-17     | 25-004A-3200 |      | Middle Connecting Bar(Special)             | 중간 연결 바(Special)   | 1    |                |
| K-18     | 25-004A-5607 |      | Middle Connecting Bar(KM-560-7)            | 중간 연결 바(KM-560-7)  | 1    |                |
| K-19     | 18-016S-5607 |      | Nut(R )                                    | 너트(우)              | 1    |                |
| K-20     | 18-015S-5607 |      | Nut(L)                                     | 너트(좌)              | 1    |                |
| K-21     | 25-006A-3200 |      | Knee Lifting Shaft                         | 무릎올림 축             | 1    |                |
| K-22     | 20-016C-6100 |      | Sticker For Auto Knee Lifting Sol.         | 스티커                | 1    |                |
| K-23     | 91-030S-1000 |      | Screw For P/U Box Bracket                  | 고정나사               | 2    |                |
| K-24     | 01-039W-1701 |      | Spring Washer For P/U Box Bracket          | 스프링 와셔             | 2    |                |
| K-25     | 18-016S-5607 |      | Nut  | 너트                 | 1    |                |
| K-26     | 12-015M-2350 |      | Cable For Auto Knee Lifting Solenoid       | 케이블                | 1    |                |
| K-27     | -            |      | Connector Pin                              | 연결핀                | 2    |                |
| K-28     | 17-016B-3000 |      | Plug For Auto Knee Lifting Solenoid        | 플러그                | 1    |                |
| K-29     | 08-014C-3701 |      | Tube(C)                                    | 튜브(C)              | 1    |                |
| K-30     | 18-029C-5607 |      | Guide Bushing For Cable                    | 가이드 부싱             | 1    |                |
| K-31     | 18-023R-5607 |      | Rubber Washer                              | 고무와셔               | 1    |                |
| K-32     | 11-011A-SF55 |      | Pedal Base                                 | 페달 베이스             | 1    |                |
| K-33     | 10-016A-SC53 |      | Spring Housing                             | 스프링 하우징            | 1    |                |
| K-34     | 10-107A-SC53 |      | Pedal Control Lever(Ass'y)                 | 페달 레버(조)           | 1Set |                |
| K-35     | 10-018G-SC53 |      | Tension Spring For Pedal                   | 장력 스프링             | 1    |                |
| K-36     | 10-019G-SC53 |      | Pressure Spring For Presser Foot           | 압력 스프링             | 1    |                |
| K-37     | 10-020G-SC53 |      | Pressure Spring For Thread Trimming        | 압력 스프링             | 1    |                |
| K-38     | 10-021S-SC53 |      | Pressure Control Screw For Thread Trimming | 고정나사               | 1    |                |
| K-39     | 10-024P-SC53 |      | Spring Guide(A)                            | 스프링 가이드(A)         | 1    |                |
| K-40     | 10-025P-SC53 |      | Spring Guide(B)                            | 스프링 가이드(B)         | 1    |                |
| K-41     | 10-024W-SC53 |      | Parallel Washer For Pedal Shaft            | 와셔                 | 1    |                |
| K-42     | ST-000287-00 |      | Shaft For Pedal Control Lever              | 축                  | 1    |                |
| K-43     | 10-026A-SC53 |      | Pedal Magnet & Film Base                   | 페달 자석 & 필름 베이스     | 1    |                |
| K-44     | 10-027C-SC53 |      | Pedal Magnet                               | 페달 자석              | 1    |                |
| K-45     | 10-029P-SC53 |      | Stopper(A) For Pressure Spring             | 스토퍼(A)             | 1    |                |
| K-46     | 10-030P-SC53 |      | Stopper(B) For Pressure Spring             | 스토퍼(B)             | 1    |                |
| K-47     | 10-031S-SC53 |      | Screw For Spring Housing                   | 고정나사               | 2    |                |
| K-48     | 10-031W-SC53 |      | Parallel Washer                            | 와셔                 | 1    |                |
| K-49     | 11-012C-3701 |      | Bushing For Pedal Control Lever Shaft      | 부싱                 | 2    |                |
| K-50     | 03-004S-SM55 |      | Fixing Bolt For Pedal Magnet & Film Base   | 고정나사               | 2    |                |
| K-51     | 06-1000-SE55 |      | Pedal P.C.B Ass'y                          | 페달 P.C.B(조)        | 1Set |                |

**NOTE:**

A=KM-235A  
B=KM-235B







# Index

| Parts No.    | Name of Parts                              | Page | Ref.No. | Parts No.    | Name of Parts                           | Page | Ref.No. | Parts No.  | Name of Parts                    | Page | Ref.No. |
|--------------|--|------|---------|--------------|---|------|---------|------------|----------------------------------|------|---------|
| 01-035P-1230 | Machine Number Plate                       | 7    | A-29    | 25-006A-3200 | Knee Lifting Shaft                      | 39   | K-21    | CGA-GA0002 | Needle Plate                     | 9    | A-33    |
| 01-039W-1701 | Spring Washer For P/U Box Bracket          | 39   | K-24    | 30-001M-SE55 | Screw For P/U Box                       | 39   | K-1-4   | CGA-GA0002 | Needle Plate                     | 35   | J-12    |
| 01-134C-1701 | Screw                                      | 39   | K-11    | 43-101A-1600 | Knee Lifting Ass'y                      | 35   | J-34    | CGA-GA0020 | Needle Plate                     | 9    | A-34    |
| 02028SW-9115 | Fixing Spring Washer                       | 41   | K-55    | 44-120S-1230 | Screw(11/64"n=40)                       | 33   | I-1-14  | CGA-GA0020 | Needle Plate                     | 35   | J-13    |
| 03-004S-SM55 | Fixing Bolt For Pedal Magnet & Film Base   | 39   | K-50    | 60-101A-2350 | Belt Cover Ass'y(Only For Trimming M/C) | 35   | J-25    | CGA-GA0032 | Needle Plate (AL-Type)           | 9    | A-35    |
| 06-0000-SE55 | Pedal Unit Assembly                        | 41   | K-62    | 91-001A-3701 | Belt Cover(B)                           | 41   | K-57    | CGA-GA0032 | Needle Plate(AL-Type)            | 35   | J-14    |
| 06-001M-SE55 | Screw For Pedal Base                       | 41   | K-56    | 91-004C-SA53 | Belt Guide                              | 41   | K-58    | CGA-GB0005 | Feed Dog                         | 15   | D-16    |
| 06-048A-2507 | Reverse Feed Solenoid Ass'y                | 15   | D-52    | 91-027B-3000 | Screw For C-9 Bracket                   | 39   | K-7     | CGA-GB0015 | Feed Dog                         | 15   | D-17    |
| 06-1000-SE55 | Pedal P.C.B Ass'y                          | 39   | K-51    | 91-029S-1000 | Screw For P/U Box                       | 39   | K-3     | CGA-GC0007 | Hinged Foot Complete             | 21   | E-10    |
| 07-027S-3701 | Screw For Belt Cover(A)                    | 41   | K-61    | 91-029S-1000 | Screw For P/U Box(Special)              | 39   | K-4     | CHK-HA0007 | Rotary Hook Ass'y                | 13   | C-24    |
| 08-014C-3701 | Tube(C)                                    | 39   | K-29    | 91-030S-1000 | Screw For P/U Box Bracket               | 39   | K-23    | CHK-HA0009 | Rotary Hook Ass'y                | 13   | C-25    |
| 09-031S-3701 | Screw For Belt Guide                       | 41   | K-59    | 91-101A-SA53 | Belt Cover(A)                           | 41   | K-60    | CHK-HB0006 | Bobbin                           | 35   | J-18    |
| 10-010M-AT10 | Fixing Nut                                 | 41   | K-54    | 91-CD01-2500 | CD Manual                               | 37   | J-54    | CHK-HB0006 | Bobbin (A1)                      | 13   | C-26    |
| 10-016A-SC53 | Spring Housing                             | 39   | K-33    | 99-001M-2350 | Inner Box                               | 37   | J-53    | CHK-HC0007 | Bobbin Case Ass'y                | 13   | C-27    |
| 10-018G-SC53 | Tension Spring For Pedal                   | 39   | K-35    | AAC-PS0001   | Bobbin Winder Ass'y                     | 35   | J-27    | CHK-HH0004 | Hook Retainer                    | 13   | C-28    |
| 10-019G-SC53 | Pressure Spring For Presser Foot           | 39   | K-36    | AFA-PS0001   | Dial Shaft Locker A'ssy                 | 17   | D-95    | CLB-BB0017 | Oil Pump Bracket                 | 33   | I-1-17  |
| 10-020G-SC53 | Pressure Spring For Thread Trimming        | 39   | K-37    | AGA-PS0022   | Hinged Foot Complete                    | 21   | E-11    | CLB-BG0021 | Magnet Holder                    | 33   | I-1-13  |
| 10-021S-SC53 | Pressure Control Screw For Thread Trimming | 39   | K-38    | ALB-PS0022   | Oil Pump Ass'y                          | 33   | I-1     | CLB-BG0022 | Holder                           | 33   | I-9     |
| 10-024P-SC53 | Spring Guide(A)                            | 39   | K-39    | ALB-PS0023   | Main Shaft Oil Pipe Ass'y               | 33   | I-6     | CLB-BG0023 | Retainer Plate For Oil Wick      | 15   | D-10    |
| 10-024W-SC53 | Parallel Washer For Pedal Shaft            | 39   | K-41    | AMB-PS0014   | Slide Plate Ass'y                       | 7    | A-32    | CLB-BG0053 | Holder For Oil Wick              | 15   | D-51    |
| 10-025P-SC53 | Spring Guide(B)                            | 39   | K-40    | ARB-PS0007   | Reverse Button Ass'y                    | 29   | G-1     | CLB-BH0003 | Retainer For Oil Tube            | 21   | E-4     |
| 10-026A-SC53 | Pedal Magnet & Film Base                   | 39   | K-43    | AS-000042    | Cable                                   | 21   | E-46-2  | CLB-BJ0004 | Oil Shield                       | 33   | I-11    |
| 10-027C-SC53 | Pedal Magnet                               | 39   | K-44    | AS-000042    | Wire Rope                               | 21   | E-46-1  | CLB-BR0001 | Impeller                         | 33   | I-1-6   |
| 10-028S-SC53 | Screw For Pedal P.C.B                      | 41   | K-53    | AS-015890    | Arm. Bed Ass'y                          | 7    | A-1     | CLB-CN0002 | Piston                           | 33   | I-1-7   |
| 10-029P-SC53 | Stopper(A) For Pressure Spring             | 39   | K-45    | AS-016315    | Take-Up Lever Complete                  | 11   | B-29    | CLB-FZ0001 | Rubber Flange                    | 15   | D-7     |
| 10-030P-SC53 | Stopper(B) For Pressure Spring             | 39   | K-46    | AS-016316    | Take-Up Lever Complete                  | 11   | B-28    | CLB-JC0002 | Oil Pump Body                    | 33   | I-1-1   |
| 10-031S-SC53 | Screw For Spring Housing                   | 39   | K-47    | AS-017761    | Synchronizer Ass'y                      | 11   | B-45    | CLB-JD0003 | Oil Wick                         | 15   | D-50    |
| 10-031W-SC53 | Parallel Washer                            | 39   | K-48    | ATA-PS0012   | Supplementary Tension Ass'y             | 7    | A-17    | CLB-JF0022 | Lower Shaft Oil Pipe             | 33   | I-8     |
| 10-044A-2700 | Trimmer Solenoid Assembly                  | 25   | F-41    | ATA-PS0013   | Tension Adjusting Apparatus Ass'y       | 7    | A-14    | CLB-JG0003 | Oil Return Tube                  | 33   | I-7     |
| 10-107A-SC53 | Pedal Control Lever(Ass'y)                 | 39   | K-34    | ATR-PS0002   | Thread Tension Release Plate            | 21   | E-26    | CLB-JG0003 | Oil Return Tube                  | 35   | J-26    |
| 11-011A-SF55 | Pedal Base                                 | 39   | K-32    | ATR-PS0003   | Tension Release Cable                   | 21   | E-46    | CLB-JJ0012 | Oil Gauge Window                 | 7    | A-22    |
| 11-012C-3701 | Bushing For Pedal Control Lever Shaft      | 39   | K-49    | BD-000255    | P/U PCB Ass'y                           | 39   | K-1-5   | CLB-JL0016 | Felt                             | 11   | B-3     |
| 11-015A-2700 | Wiper Solenoid Assembly                    | 31   | H-15    | CA-000479    | P/U Connector Cable(SE-013)             | 39   | K-1-3   | CLB-JL0024 | Felt                             | 13   | C-2     |
| 11-018M-2350 | Plug                                       | 17   | D-63    | CA-005054    | Reverse Button Switch                   | 29   | G-16    | CLB-JM0004 | Oil Pump Cap                     | 33   | I-1-12  |
| 11-019M-2350 | Tube                                       | 17   | D-62    | CAB-AA0046   | Arm                                     | 7    | A-1-1   | CLB-JP0005 | Nipple For Oil Return Pipe       | 33   | I-1-4   |
| 11-020A-2500 | Magnetic Holder                            | 11   | B-45-1  | CAB-AB0039   | Bed                                     | 7    | A-1-2   | CLB-JP0006 | Nipple For Lower Shaft           | 33   | I-1-5   |
| 11-021S-2500 | Screw For Magnetic Holder                  | 11   | B-45-3  | CAC-JB0001   | Oil Tank                                | 35   | J-3     | CLB-JP0025 | Oil Pan Nipple                   | 35   | J-32    |
| 11-022W-2500 | Washer For Magnetic Holder                 | 11   | B-45-2  | CAC-MA0005   | Sewing Machine Cover                    | 35   | J-8     | CLB-LB0001 | Oil Pump Cover                   | 33   | I-1-11  |
| 12-004A-2700 | Reverse Selection Switch                   | 29   | G-19    | CAC-MD0003   | Oil                                     | 35   | J-2     | CLF-CA0002 | Feed Connecting Link(A)          | 15   | D-25    |
| 12-006S-2700 | Support Screw                              | 29   | G-9     | CAC-MG0003   | Oil Pan Gasket                          | 35   | J-29    | CLF-CA0003 | Feed Connecting Link(B)          | 15   | D-26    |
| 12-009B-SE55 | Connector for Pedal                        | 41   | K-52    | CAC-MH0001   | Accessory Box                           | 35   | J-1     | CLF-CB0005 | Feed Lifting Bell Arm            | 15   | D-42    |
| 12-015M-2350 | Cable For Auto Knee Lifting Solenoid       | 39   | K-26    | CFA-BB0002   | Bracket For Reverse Feed Solenoid       | 15   | D-54    | CLF-CB0006 | Rear Crank                       | 15   | D-45    |
| 12-016M-2350 | Earth Line                                 | 9    | A-50    | CFA-BB0013   | Stopper                                 | 17   | D-108   | CLF-CB0007 | Feed Rocker                      | 15   | D-8     |
| 13-0000-SE55 | Synchronizer Ass'y (Servo)                 | 11   | B-45-4  | CFA-BJ0003   | B/T Spring Holder                       | 17   | D-75    | CLF-CB0008 | Crank(Rear)                      | 15   | D-21    |
| 13-2000-SE55 | Synchronizer Ass'y                         | 11   | B-45    | CFA-BM0001   | Dial Shaft Stopper                      | 17   | D-95-3  | CLF-CB0031 | Rear Crank                       | 15   | D-46    |
| 17-016B-3000 | Plug For Auto Knee Lifting Solenoid        | 39   | K-28    | CFA-BN0001   | Dial Shaft Holder                       | 17   | D-95-1  | CLF-CC0001 | Feed Rocker Shaft Connecting Rod | 17   | D-65    |
| 18-011B-5607 | Solenoid Shaft Connecting Rod.             | 39   | K-12    | CFA-BN0002   | Dial Shaft Holder Body                  | 17   | D-95-2  | CLF-CC0002 | Crank Rod Complete               | 17   | D-71    |
| 18-015S-5607 | Nut(L)                                     | 39   | K-20    | CFA-CA0003   | Feed Regulator Link                     | 15   | D-28    | CLF-CD0004 | Sliding Block and Shaft          | 15   | D-20    |
| 18-016S-5607 | Nut  | 39   | K-25    | CFA-CB0003   | Feed Regulator Arm                      | 17   | D-96    | CLF-CR0003 | Feed Bar                         | 15   | D-12    |
| 18-016S-5607 | Nut(R)                                     | 39   | K-19    | CFA-CB0004   | Reverse Feed Solenoid Crank             | 17   | D-58    | CLF-DC0017 | Feed Cam(A)                      | 17   | D-67    |
| 18-018B-5607 | Middle Connecting Bar(KM-235)              | 39   | K-16    | CFA-CC0002   | Connecting Rod For Feed Regulator       | 17   | D-74    | CLF-DC0018 | Feed Cam(C)                      | 17   | D-72    |
| 18-018B-9000 | Auto Knee Lifter Solenoid Cover            | 39   | K-6     | CFA-CC0003   | Reverse Solenoid Connecting Rod         | 17   | D-61    | CLF-DC0022 | Feed Cam(B)                      | 17   | D-68    |
| 18-019S-5607 | Nut  | 39   | K-13    | CFA-CL0002   | Roller                                  | 17   | D-98    | CLF-KF0001 | Feed Lifting Shaft               | 15   | D-36    |
| 18-020A-5607 | Ball Joint(Left)                           | 39   | K-15    | CFA-CM0003   | Dial Shaft Stopper Handle               | 17   | D-95-4  | CLF-KF0002 | Feed Roker Shaft                 | 15   | D-1     |
| 18-021A-5607 | Ball Joint(Right)                          | 39   | K-14    | CFA-CM0013   | Reverse Feed Control Lever              | 17   | D-105   | CLF-KH0001 | Feed Bar Shaft                   | 15   | D-13    |
| 18-023R-5607 | Rubber Washer                              | 39   | K-31    | CFA-CQ0011   | Feed Regulating Dial-Insert Type        | 17   | D-92    | CLS-KC0026 | Lower Shaft                      | 13   | C-1     |
| 18-029C-5607 | Guide Bushing For Cable                    | 39   | K-30    | CFA-CQ0013   | Feed Regulating Dial-Insert Type        | 17   | D-93    | CMB-BB0045 | Bed Leg Right                    | 9    | A-38    |
| 18-107B-9000 | Auto Knee Lifter Solenoid Case             | 39   | K-5     | CFA-DF0001   | Feed Regulating                         | 17   | D-83    | CMB-BJ0024 | Gauge Plate                      | 9    | A-52    |
| 18-109B-9000 | Fixing Plate For Stroke                    | 39   | K-10    | CFA-KF0001   | Shaft                                   | 17   | D-102   | CMB-FC0058 | Gasket                           | 7    | A-21    |
| 20-016C-6100 | Sticker For Auto Knee Lifting Sol.         | 39   | K-22    | CFA-KF0002   | Shaft                                   | 17   | D-85    | CMB-FC0059 | Gasket                           | 7    | A-3     |
| 25-004A-3200 | Middle Connecting Bar(Special)             | 39   | K-17    | CFA-KF0003   | Feed Adjusting Shaft                    | 17   | D-80    | CMB-HK0001 | Thread Guide Left                | 7    | A-6     |
| 25-004A-5607 | Middle Connecting Bar(KM-560-7)            | 39   | K-18    | CFA-KJ0011   | Feed Regulator Dial Shaft               | 17   | D-88    | CMB-HK0005 | Thread Guide For                 | 7    | A-11    |

# Index

| Parts No.  | Name of Parts                      | Page | Ref.No. | Parts No.  | Name of Parts                   | Page | Ref.No. | Parts No.  | Name of Parts                | Page | Ref.No. |
|------------|------------------------------------|------|---------|------------|---------------------------------|------|---------|------------|------------------------------|------|---------|
| CMB-HK0020 | Guide Bar For Thread               | 7    | A-19    | CTT-BF0017 | Holder                          | 25   | F-12    | DGR-AD0002 | Upright Shaft Upper Gear     | 13   | C-20    |
| CMB-LA0180 | Cover For Take Up Lever            | 7    | A-9     | CTT-BH0001 | Bobbin Presser Bar              | 25   | F-48    | DGR-AD0003 | Upright Shaft Lower Gear     | 13   | C-22    |
| CMB-LA0181 | Top Cover                          | 7    | A-20    | CTT-BH0006 | Lever                           | 25   | F-49    | DGR-AD0004 | Lower Shaft Gear             | 13   | C-13    |
| CMB-LA0182 | Face Plate                         | 7    | A-2     | CTT-BJ0011 | Thread Detachable Plate         | 25   | F-5     | DPK-CA0001 | Robber Plug                  | 7    | A-26    |
| CMB-LA0195 | Belt Cover(B)                      | 35   | J-25-2  | CTT-BN0005 | Spring Guide                    | 25   | F-26    | DPK-CB0002 | Robber Plug(Large)           | 7    | A-25    |
| CMB-LA0196 | Belt Cover(A)                      | 35   | J-25-1  | CTT-CA0017 | Connecting Link                 | 25   | F-14    | DPK-CB0002 | Rubber Plug                  | 7    | A-5     |
| CMB-LA0197 | Belt Cover(C)                      | 35   | J-25-3  | CTT-CM0029 | Thread Trimmer Lever            | 25   | F-18    | DPK-CB0002 | Rubber Plug                  | 9    | A-51    |
| CMB-LA0198 | Belt Cover(D)                      | 35   | J-25-4  | CTT-CM0030 | Clutch Lever                    | 25   | F-44    | DPK-CB0004 | Rubber Cap                   | 11   | B-44    |
| CMB-LB0080 | Cable Cover                        | 9    | A-42    | CTT-CM0031 | Stopper Lever                   | 25   | F-28    | DPK-CB0009 | Face Plate Rubber Cap(L)     | 7    | A-4     |
| CMB-LD0032 | Model Mark                         | 7    | A-27    | CTT-DF0005 | Reversal Cam                    | 25   | F-20    | DPK-CB0025 | Rubber Cap                   | 15   | D-4     |
| CMB-LD0035 | Model Mark                         | 7    | A-28    | CTT-FD0001 | Stopper Rubber                  | 25   | F-55    | DPK-CB0025 | Rubber Cap                   | 15   | D-39    |
| CNB-CD0002 | Sliding Block                      | 11   | B-33    | CTT-FD0003 | Cushion Rubber (A)              | 25   | F-39    | DPK-CB0029 | Robber Plug(Small)           | 7    | A-24    |
| CNB-HK0021 | Thread Guide                       | 11   | B-40    | CTT-FZ0001 | Cushion Rubber                  | 25   | F-40    | DPK-CC0010 | Rubber Plug For Cable        | 7    | A-31    |
| CNB-HK0022 | Thread Guide "A"                   | 11   | B-39    | CTT-KF0007 | Thread Trimmer Shaft            | 25   | F-23    | DPK-CZ0002 | Packing                      | 7    | A-15    |
| CNB-KA0026 | Needle Bar                         | 11   | B-34    | CTT-NA0006 | Rotary Mes                      | 25   | F-7     | DPK-CZ0002 | Ratchet                      | 7    | A-14-9  |
| CNB-KA0027 | Needle Bar                         | 11   | B-35    | CTT-NA0010 | Rotary Mes                      | 25   | F-8     | DPK-CZ0006 | Rubber Cap                   | 21   | E-3     |
| CPB-BF0004 | Holder                             | 21   | E-13    | CTT-NB0009 | Fixed Mes                       | 25   | F-1     | DPK-CZ0009 | Oil Protection Rubber        | 11   | B-30    |
| CPB-BH0006 | Safety Guide                       | 23   | E-59    | CTT-NB0009 | Fixed Mes                       | 35   | J-44    | DPK-DC000  | Cap                          | 35   | J-16    |
| CPB-CM0003 | Presser Bar Lifter Lever           | 21   | E-17    | CUR-KC0001 | Upright Shaft                   | 13   | C-15    | DPL-AA0002 | Pulley                       | 11   | B-20    |
| CPB-DF0007 | Cam Shaft                          | 21   | E-19    | CUS-CH0001 | Adjusting Valve For Lubrication | 11   | B-5     | DPN-AA0001 | Pin(A)                       | 15   | D-23    |
| CPB-HK0001 | Thread Guide For Frame             | 21   | E-14    | CUS-DA0026 | Counterweight                   | 11   | B-23    | DPN-AA0036 | Hinge Pin                    | 15   | D-48    |
| CPB-KB0001 | Presser Bar                        | 21   | E-1     | CUS-DA0027 | Counterweight                   | 11   | B-24    | DPN-AA0038 | Tension Release Pin          | 7    | A-14-2  |
| CPB-KC0003 | Presser Regulator Bar              | 21   | E-5     | CUS-FA0001 | Rubber                          | 11   | B-2     | DPN-AA0039 | Pin(B)                       | 15   | D-27    |
| CPM-BH0009 | Connecting Rod                     | 21   | E-33    | CUS-KC0026 | Main Shaft                      | 11   | B-1     | DPN-AA0040 | Pin(C)                       | 15   | D-32    |
| CPM-CA0017 | Knee Lifting Link                  | 21   | E-36    | CWP-BA0001 | Crank Rotary Regulator Plate    | 31   | H-11    | DPN-AA0041 | Hinge Pin                    | 15   | D-34    |
| CPM-CM0023 | Knee Lifter Plate                  | 21   | E-24    | CWP-BB0015 | Solenoid Bracket                | 31   | H-17    | DPN-AA0141 | Dial Pin                     | 17   | D-90    |
| CPM-CR0009 | Knee Lifting Rod                   | 21   | E-43    | CWP-BF0005 | Holder                          | 31   | H-4     | DPN-AA0142 | Hinge Pin                    | 31   | H-9     |
| CRB-BJ0005 | Pushing Plate                      | 29   | G-17    | CWP-BH0011 | Wiper                           | 31   | H-1     | DPN-AA0145 | Tension Release Pin          | 7    | A-13    |
| CRB-BK0003 | Reverse Selection Button           | 29   | G-6     | CWP-BH0011 | Wiper                           | 35   | J-43    | DPN-AD0092 | Collar Shaft                 | 25   | F-31    |
| CRB-FD0002 | Insulated Rubber(B) For Switch     | 29   | G-13    | CWP-BJ0014 | Crank Rotary Plate              | 31   | H-8     | DPN-AD0113 | Hinge Pin For Connecting Rod | 17   | D-64    |
| CRB-FD0003 | Insulated Rubber (A) For Switch    | 29   | G-14    | CWP-CA0019 | Connecting Rod                  | 31   | H-14    | DPN-BC0010 | Hinge Pin(A)                 | 15   | D-31    |
| CRB-KC0002 | Shaft                              | 29   | G-7     | CWP-CB0008 | Wiper Crank                     | 31   | H-6     | DPN-BC0011 | Hinge Pin(B)                 | 15   | D-29    |
| CRB-LA0001 | Cover                              | 29   | G-15    | CWP-KF0001 | Wiper Rotary Shaft              | 31   | H-2     | DPN-BC0039 | Pin                          | 17   | D-97    |
| CRB-LC0004 | Button Case                        | 29   | G-12    | CWP-LA0005 | Cover                           | 31   | H-22    | DSC-AA0003 | Screw(15/64"n=28)            | 35   | J-38    |
| CST-BB0025 | Head Hinge                         | 35   | J-7     | DBS-DA0034 | Needle Bar Upper Bushing        | 11   | B-36    | DSC-AA0010 | Screw(3/16"n=28)             | 15   | D-22    |
| CST-BB0029 | Knee Lifting Controller            | 35   | J-37    | DBS-DA0037 | Vertical Shaft Upper Bushing    | 13   | C-16    | DSC-AA0010 | Screw(3/16"n=28)             | 15   | D-43    |
| CST-CB0003 | Knee Lifter Arm Joint Complete     | 35   | J-34-6  | DBS-DA0038 | Upright Shaft Lower Bushing     | 13   | C-18    | DSC-AA0010 | Screw(3/16"n=28)             | 15   | D-47    |
| CST-CR0001 | Head Support Pole                  | 35   | J-21    | DBS-DA0041 | Lower Shaft Rear Bushing        | 13   | C-11    | DSC-AA0013 | Screw                        | 7    | A-1-4   |
| CST-CR0005 | Knee Base Rubber                   | 35   | J-15    | DBS-DA0067 | Bushing(Front)                  | 15   | D-2     | DSC-AA0030 | Screw(3/16"n=32)             | 25   | F-37    |
| CST-FB0002 | Packing                            | 35   | J-31    | DBS-DA0068 | Rear Bushing                    | 15   | D-5     | DSC-AA0032 | Screw                        | 7    | A-1-3   |
| CST-FD0011 | Head Support Rubber "A"            | 35   | J-5     | DBS-DA0068 | Rear Bushing                    | 15   | D-40    | DSC-AA0033 | Screw(9/64"n=40)             | 21   | E-32    |
| CST-FD0012 | Head Support Rubber "B"            | 35   | J-4     | DBS-DA0071 | Front Bushing                   | 15   | D-37    | DSC-AC0022 | Screw(1/4"n=40)              | 25   | F-33    |
| CST-FF0004 | Rubber Cushion For Hinge           | 35   | J-6     | DBS-DA0182 | Bushing                         | 21   | E-2     | DSC-AZ0003 | Screw                        | 7    | A-1-5   |
| CST-JA0008 | Oil Pan                            | 35   | J-28    | DBS-DA0200 | Bushing                         | 25   | F-24    | DSC-BA0001 | Screw(9/64"n=40)             | 7    | A-7     |
| CST-JA0025 | Oil Pan                            | 37   | J-52    | DBS-DA0249 | Needle Bar Lower Bushing        | 11   | B-38    | DSC-BA0001 | Screw(9/64"n=40)             | 7    | A-12    |
| CST-KC0012 | Shaft                              | 35   | J-34-8  | DBS-DA0258 | Main Shaft Center Bushing       | 11   | B-11    | DSC-BA0001 | Screw(9/64"n=40)             | 31   | H-23    |
| CST-MF0001 | Thread Stand Ass'y                 | 37   | J-51    | DBS-DA0259 | Lower Shaft Bushing(Front)      | 13   | C-4     | DSC-BA0002 | Screw(9/64"n=40)             | 21   | E-12    |
| CTA-BA0002 | Tension Barrel                     | 7    | A-14-1  | DBS-DB0011 | Main Shaft Rear Bushing         | 11   | B-17    | DSC-BA0003 | Screw(11/64"n=40)            | 33   | I-12    |
| CTA-BJ0001 | Tension Release Washer             | 7    | A-14-7  | DBS-DB0076 | Main Shaft Front Bushing        | 11   | B-9     | DSC-BA0004 | Screw(3/16"n=28)             | 17   | D-100   |
| CTA-HK0002 | Guide Plate                        | 7    | A-17-1  | DBS-DB0077 | Lower Shaft Bushing(Center)     | 13   | C-8     | DSC-BA0007 | Screw(3/16"n=32)             | 23   | E-58    |
| CTA-HL0001 | Tension Disk                       | 7    | A-14-6  | DBS-DB0081 | Guide Bushing                   | 29   | G-4     | DSC-BA0007 | Screw(3/16"n=32)             | 25   | F-43    |
| CTA-HL0003 | Tension Disk                       | 7    | A-17-3  | DCL-AA0001 | Main Shaft Collar               | 11   | B-13    | DSC-BA0007 | Screw(3/16"n=32)             | 31   | H-13    |
| CTA-HM0005 | Tension Stud                       | 7    | A-14-4  | DCL-AA0015 | Collar For Impeller Shaft       | 33   | I-1-15  | DSC-BA0009 | Screw(9/64"n=40)             | 9    | A-45    |
| CTA-HM0006 | Shaft                              | 7    | A-17-2  | DCL-AA0015 | Collar(B)                       | 13   | C-9     | DSC-BA0009 | Screw(9/64"n=40)             | 9    | A-47    |
| CTR-BB0011 | Stopper                            | 21   | E-30    | DCL-AA0026 | Collar                          | 33   | I-4     | DSC-BA0009 | Screw(9/64"n=40)             | 9    | A-49    |
| CTR-BQ0002 | Pipe For Thread Release Lever      | 21   | E-54    | DCL-AA0028 | Collar                          | 17   | D-81    | DSC-BA0014 | Screw(3/16"n=32)             | 17   | D-106   |
| CTR-CM0012 | Operating Lever For Thread Release | 21   | E-50    | DCL-AA0082 | Collar                          | 21   | E-52    | DSC-BA0027 | Screw(15/64"n=28)            | 35   | J-39    |
| CTR-CM0013 | Cam Driving Lever                  | 21   | E-51    | DCL-BB0025 | Collar                          | 25   | F-30    | DSC-BA0028 | Screw(15/64"n=28)            | 35   | J-40    |
| CTR-KC0005 | Shaft                              | 21   | E-22    | DGR-AA0030 | Thread Trimmer Gear Assembly    | 25   | F-21    | DSC-BB0014 | Screw(11/64"n=40)            | 25   | F-9     |
| CTT-BB0029 | Stopper                            | 25   | F-36    | DGR-AA0030 | Thread Trimmer Gear Assembly    | 25   | F-21    | DSC-BB0015 | Screw(M5×0.8)                | 15   | D-55    |
| CTT-BB0031 | Solenoid Base                      | 25   | F-42    | DGR-AA0031 | Thread Trimmer Gear "B"         | 25   | F-35    | DSC-BB0020 | Screw(9/64"n=40)             | 25   | F-2     |
| CTT-BF0002 | Holder                             | 25   | F-50    | DGR-AD0001 | Main Shaft Gear                 | 11   | B-15    | DSC-BC0001 | Screw for Needle Plate       | 9    | A-53    |

# Index

| Parts No.  | Name of Parts       | Page | Ref.No. | Parts No.  | Name of Parts                  | Page | Ref.No. | Parts No.  | Name of Parts                                      | Page | Ref.No. |
|------------|---------------------|------|---------|------------|--------------------------------|------|---------|------------|--|------|---------|
| DSC-BC0001 | Screw(11/64"n=40)   | 9    | A-36    | DSC-CA0005 | Screw(1/4"n=40)                | 17   | D-82    | DSP-AB0035 | Spring   | 19   | D-110   |
| DSC-BF0001 | Screw(1/8"n=44)     | 11   | B-41    | DSC-CA0008 | Screw(15/64"n=28)              | 11   | B-10    | DSP-AB0048 | Reverse Feed Spring                                | 17   | D-77    |
| DSC-BF0001 | Screw(1/8"n=44)     | 25   | F-51    | DSC-CA0008 | Screw(15/64"n=28)              | 11   | B-12    | DSP-AC0017 | Spring   | 25   | F-53    |
| DSC-BF0004 | Screw(15/64"n=28)   | 15   | D-15    | DSC-CA0008 | Screw(15/64"n=28)              | 11   | B-31    | DSP-AC0023 | Spring Joint                                       | 33   | I-3     |
| DSC-BF0006 | Screw(3/16"n=28)    | 33   | I-2     | DSC-CA0008 | Screw(15/64"n=28)              | 13   | C-12    | DSP-AC0056 | Spring   | 35   | J-36    |
| DSC-BF0007 | Screw(15/64"n=28)   | 25   | F-19    | DSC-CA0008 | Screw(15/64"n=28)              | 13   | C-17    | DSP-AC0058 | Spring   | 21   | E-27    |
| DSC-BF0008 | Screw(15/64"n=40)   | 11   | B-21    | DSC-CA0008 | Screw(15/64"n=28)              | 13   | C-19    | DSP-AC0064 | Spring   | 25   | F-27    |
| DSC-BF0010 | Screw(11/64"n=40)   | 17   | D-84    | DSC-CA0008 | Screw(15/64"n=28)              | 17   | D-87    | DSP-AC0065 | Spring   | 25   | F-46    |
| DSC-BF0012 | Screw(11/64"n=40)   | 21   | E-15    | DSC-CA0008 | Screw(15/64"n=28)              | 25   | F-25    | DSP-BA0009 | Spring   | 7    | A-17-4  |
| DSC-BF0012 | Screw(11/64"n=40)   | 35   | J-25-6  | DSC-CA0011 | Screw(1/4"n=40)                | 11   | B-26    | DSP-BA0010 | Tension Spring                                     | 7    | A-14-8A |
| DSC-BF0018 | Screw(1/8"n=44)     | 15   | D-19    | DSC-CA0011 | Screw(1/4"n=40)                | 15   | D-30    | DSP-BA0023 | Tension Spring                                     | 7    | A-14-8B |
| DSC-BF0018 | Screw(1/8"n=44)     | 31   | H-3     | DSC-CA0011 | Screw(1/4"n=40)                | 17   | D-73    | DSP-BB0002 | Check Spring                                       | 7    | A-14-3  |
| DSC-BF0019 | Screw(3/16"n=28)    | 17   | D-94    | DSC-CA0015 | Screw(15/64"n=28)              | 25   | F-56    | DTC-AH0001 | Cable Holder                                       | 9    | A-48    |
| DSC-BF0026 | Screw(3/16"n=32)    | 15   | D-9     | DSC-CA0017 | Screw(15/64"n=28)              | 11   | B-37    | DTC-AH0012 | Cable Clip(A)                                      | 23   | E-57    |
| DSC-BF0031 | Screw(11/64"n=40)   | 7    | A-10    | DSC-CA0019 | Screw(1/4"n=40)                | 13   | C-21    | DTC-AK0003 | Magnet   | 35   | J-24    |
| DSC-BF0031 | Screw(11/64"n=40)   | 13   | C-30    | DSC-CA0019 | Screw(1/4"n=40)                | 13   | C-23    | DTL-CC0001 | Box Spanner  | 35   | J-45    |
| DSC-BF0031 | Screw(11/64"n=40)   | 17   | D-101   | DSC-CA0019 | Screw(1/4"n=40)                | 17   | D-69    | DWS-AA0005 | Washer   | 21   | E-31    |
| DSC-BF0031 | Screw(11/64"n=40)   | 31   | H-5     | DSC-CA0035 | Screw(15/64"n=28)              | 35   | J-33    | DWS-AA0005 | Washer   | 23   | E-60    |
| DSC-BF0036 | Screw(11/64"n=40)   | 15   | D-3     | DSC-CB0003 | Screw(11/64"n=40)              | 7    | A-18    | DWS-AA0006 | Washer   | 25   | F-38    |
| DSC-BF0036 | Screw(11/64"n=40)   | 15   | D-33    | DSC-CB0003 | Screw(11/64"n=40)              | 13   | C-10    | DWS-AA0006 | Washer   | 25   | F-45    |
| DSC-BF0036 | Screw(11/64"n=40)   | 15   | D-35    | DSC-CB0003 | Screw(11/64"n=40)              | 21   | E-23    | DWS-AA0015 | Washer   | 15   | D-14    |
| DSC-BF0036 | Screw(11/64"n=40)   | 15   | D-49    | DSC-CB0005 | Screw(15/64"n=28)              | 25   | F-22    | DWS-AA0027 | Thrust Washer                                      | 11   | B-32    |
| DSC-BF0036 | Screw(11/64"n=40)   | 31   | H-21    | DSC-CB0007 | Screw(M5)                      | 21   | E-53    | DWS-AA0038 | Felt Washer  | 21   | E-20    |
| DSC-BF0036 | Screw(11/64"n=40)   | 33   | I-10    | DSC-CC0001 | Screw(5/16"n=18)               | 35   | J-34-7  | DWS-AA0038 | Washer   | 21   | E-21    |
| DSC-BF0037 | Screw(9/32"n=28)    | 11   | B-27    | DSC-FA0063 | Stud Screw For Solenoid Crank  | 17   | D-59    | DWS-AA0051 | Washer   | 25   | F-11    |
| DSC-BF0040 | Screw(3/16"n=32)    | 13   | C-7     | DSC-FA0086 | Stud Screw For Connecting Rod  | 15   | D-53    | DWS-AA0167 | Flat Washer  | 21   | E-55    |
| DSC-BF0061 | Screw(M8×1.25)      | 35   | J-30    | DSC-FA0188 | Hinge Screw                    | 21   | E-44    | DWS-CA0001 | Spring Washer                                      | 13   | C-29    |
| DSC-BF0062 | Screw(1/8"n=40)     | 25   | F-3     | DSC-FA0190 | Pivot Screw                    | 25   | F-47    | DWS-CB0002 | Corrugated Washer                                  | 17   | D-104   |
| DSC-BF0063 | Screw(11/64"n=40)   | 15   | D-24    | DSC-FA0191 | Hinge Screw                    | 31   | H-12    | EA-000023  | Edge Sensor  | 41   | K-63    |
| DSC-BF0063 | Screw(11/64"n=40)   | 17   | D-66    | DSC-FA0193 | Pivot Screw                    | 25   | F-17    | EE-001523  | S-5 P/U B/D Ass'y                                  | 39   | K-1     |
| DSC-BF0070 | Set Screw           | 13   | C-3     | DSC-FA0194 | Pivot Screw                    | 25   | F-15    | GP-019000  | Feed Dog(AL-Type)                                  | 15   | D-18    |
| DSC-BF0074 | Pin Screw           | 33   | I-1-9   | DSC-FF0023 | Hinge Screw                    | 21   | E-37    | GP-024743  | Front cover  | 39   | K-1-1   |
| DSC-BF0077 | Screw(1/8"n=44)     | 15   | D-11    | DSC-FH0005 | Holder For Reverse Feed Spring | 17   | D-78    | GP-024744  | Rear cover   | 39   | K-1-6   |
| DSC-BF0079 | Screw(3/16"n=32)    | 15   | D-44    | DSC-FH0009 | Hinge Screw                    | 21   | E-40    | GP-024747  | Membrane Switch                                    | 39   | K-1-2   |
| DSC-BG0002 | Screw(5/16"n=28)    | 11   | B-22    | DSC-HA0001 | Screw(9/16"n=20)               | 21   | E-8     | GP-048566  | Mark   | 9    | A-54    |
| DSC-BG0003 | Screw(9/64"n=40)    | 35   | J-23    | DSC-HB0025 | Screw For Belt Cover           | 35   | J-25-8  | GP-051355  | Bracket For Program Unit Box(KM-235)               | 39   | K-2     |
| DSC-BJ0002 | Screw(11/64"n=40)   | 35   | J-25-7  | DSC-HC0003 | Bed Leg Front                  | 9    | A-37    | GP-052071  | Head Support Rubber "A"(Full Submerged Type Table) | 35   | J-5     |
| DSC-BJ0003 | Screw(11/64"n=40)   | 21   | E-18    | DSC-HC0004 | Bed Leg Rear                   | 25   | F-52    | PBR-BA0012 | Needle Bearing                                     | 25   | F-13    |
| DSC-BJ0003 | Screw(9/64"n=40)    | 17   | D-76    | DSC-HD0006 | Adjusting Screw                | 19   | D-111   | PPK-AA0001 | Oil Seal   | 11   | B-19    |
| DSC-BJ0003 | Screw(9/64"n=40)    | 33   | I-1-3   | DSC-HZ0011 | Connecting Bolt                | 21   | E-47    | PPK-BA0004 | O-Ring   | 11   | B-4     |
| DSC-BJ0004 | Screw(11/64"n=40)   | 7    | A-8     | DSN-AA0001 | Nut                            | 7    | A-19-1  | PPK-BA0005 | O-Ring   | 21   | E-41    |
| DSC-BJ0014 | Screw(9/64"n=40)    | 21   | E-16    | DSN-AA0004 | Nut(15/64"n=28)                | 35   | J-41    | PPK-BA0007 | Packing  | 17   | D-103   |
| DSC-BJ0024 | Screw(3/16"n=32)    | 17   | D-107   | DSN-AA0006 | Nut(3/16"n=32)                 | 21   | E-39    | PPK-BA0008 | O-Ring   | 17   | D-86    |
| DSC-BJ0035 | Screw(11/64"n=40)   | 9    | A-43    | DSN-AA0006 | Nut(3/16"n=32)                 | 21   | E-45    | PPK-BA0009 | O-ring   | 17   | D-89    |
| DSC-BJ0035 | Screw(11/64"n=40)   | 17   | D-109   | DSN-AA0009 | Nut(11/64"n=40)                | 19   | D-112   | PPK-BA0009 | O-Ring   | 21   | E-56    |
| DSC-BJ0035 | Screw(11/64"n=40)   | 25   | F-6     | DSN-AA0009 | Nut(11/64"n=40)                | 25   | F-16    | PPN-AD0001 | Setting Pin  | 7    | A-30    |
| DSC-BJ0057 | Screw(M2×0.4)       | 29   | G-20    | DSN-AA0017 | Nut(1/8"n=40)                  | 25   | F-4     | PPN-AF0009 | Pin  | 33   | I-1-10  |
| DSC-BJ0058 | Screw(1/8"n=44)     | 29   | G-18    | DSN-AA0024 | Nut(A)                         | 21   | E-48    | PPN-AF0009 | Stopper Pin(2×8)                                   | 29   | G-2     |
| DSC-BJ0059 | Screw For Top Cover | 7    | A-23    | DSN-AA0038 | Nut                            | 29   | G-3     | PPN-AF0010 | Spring Pin   | 17   | D-95-5  |
| DSC-CA0001 | Screw(15/34"n=28)   | 13   | C-5     | DSN-AA0039 | Nut                            | 29   | G-10    | PPN-AF0030 | Stopper Pin  | 25   | F-29    |
| DSC-CA0001 | Screw(15/64"n=28)   | 7    | A-16    | DSN-CC0001 | Presser Adjusting Nut          | 21   | E-9     | PSC-AC0006 | Screw(M6)  | 15   | D-57    |
| DSC-CA0001 | Screw(15/64"n=28)   | 11   | B-18    | DSN-CD0001 | Cap                            | 7    | A-14-10 | PSC-AC0026 | Screw(M8×1.25)                                     | 9    | A-41    |
| DSC-CA0001 | Screw(15/64"n=28)   | 15   | D-6     | DSN-CD0004 | Nut                            | 7    | A-17-5  | PSC-BA0001 | Screw(M3×0.5)                                      | 31   | H-20    |
| DSC-CA0001 | Screw(15/64"n=28)   | 15   | D-38    | DSP-AA0016 | Spring                         | 13   | C-6     | PSC-DD0001 | Screw  | 35   | J-25-5  |
| DSC-CA0001 | Screw(15/64"n=28)   | 15   | D-41    | DSP-AA0027 | Piston Spring                  | 33   | I-1-8   | PSN-AA0005 | Nut(M8×1.25)                                       | 9    | A-40    |
| DSC-CA0002 | Set Screw           | 7    | A-14-5  | DSP-AA0028 | Feed Regulator Dial Spring     | 17   | D-91    | PSN-AA0017 | Hinge Nut For Connecting Rod                       | 17   | D-60    |
| DSC-CA0004 | Screw(11/64"n=40)   | 33   | I-1-16  | DSP-AA0052 | Spring                         | 17   | D-99    | PSN-AA0017 | Nut(B)   | 21   | E-49    |
| DSC-CA0004 | Screw(11/64"n=40)   | 33   | I-5     | DSP-AA0103 | Presser Regulation Spring      | 21   | E-6     | PSN-AA0031 | Nut  | 19   | D-114   |
| DSC-CA0005 | Screw(1/4"n=40)     | 11   | B-14    | DSP-AA0104 | Spring                         | 25   | F-34    | PSR-AA0001 | Stopper C-Ring                                     | 25   | F-10    |
| DSC-CA0005 | Screw(1/4"n=40)     | 11   | B-16    | DSP-AA0105 | Spring                         | 29   | G-8     | PSR-AA0004 | Stopper C-Ring                                     | 17   | D-70    |
| DSC-CA0005 | Screw(1/4"n=40)     | 11   | B-25    | DSP-AA0106 | Solenoid Tension Spring        | 31   | H-16    | PSR-AC0001 | E-Ring(Φ9)   | 35   | J-35    |
| DSC-CA0005 | Screw(1/4"n=40)     | 13   | C-14    | DSP-AA0108 | Presser Regulation Spring      | 21   | E-7     | PSR-AC0002 | E-Ring   | 17   | D-79    |

# Index

| Parts No.    | Name of Parts                     | Page | Ref.No. | Parts No. | Name of Parts | Page | Ref.No. | Parts No. | Name of Parts | Page | Ref.No. |
|--------------|-----------------------------------|------|---------|-----------|---------------|------|---------|-----------|---------------|------|---------|
| PSR-AC0002   | E-Ring                            | 21   | E-29    |           |               |      |         |           |               |      |         |
| PSR-AC0002   | E-Ring                            | 21   | E-38    |           |               |      |         |           |               |      |         |
| PSR-AC0002   | E-Ring                            | 21   | E-42    |           |               |      |         |           |               |      |         |
| PSR-AC0003   | Stop Ring                         | 25   | F-32    |           |               |      |         |           |               |      |         |
| PSR-AC0003   | Stop Ring                         | 29   | G-5     |           |               |      |         |           |               |      |         |
| PSR-AC0004   | E-Ring                            | 29   | G-11    |           |               |      |         |           |               |      |         |
| PSR-AC0004   | E-Ring                            | 31   | H-10    |           |               |      |         |           |               |      |         |
| PSR-AC0005   | E-Ring( $\Phi 6$ )                | 25   | F-54    |           |               |      |         |           |               |      |         |
| PSR-AC0008   | E-Ring                            | 21   | E-28    |           |               |      |         |           |               |      |         |
| PTC-AG0001   | Nylon Clip                        | 27   | F-57    |           |               |      |         |           |               |      |         |
| PTC-AG0001   | Nylon Clip                        | 33   | I-13    |           |               |      |         |           |               |      |         |
| PTC-AG0001   | Nylon Clip                        | 37   | J-50    |           |               |      |         |           |               |      |         |
| PTC-AH0001   | Cable Holder(5N)                  | 9    | A-44    |           |               |      |         |           |               |      |         |
| PTC-AH0003   | Cable Holder(6N)                  | 9    | A-46    |           |               |      |         |           |               |      |         |
| PTL-AB0001   | Wrench(2mm)                       | 35   | J-46    |           |               |      |         |           |               |      |         |
| PTL-AB0002   | Wrench(5mm)                       | 37   | J-49    |           |               |      |         |           |               |      |         |
| PTL-AB0003   | Wrench(2.5mm)                     | 35   | J-47    |           |               |      |         |           |               |      |         |
| PTL-AB0005   | Wrench(3mm)                       | 37   | J-48    |           |               |      |         |           |               |      |         |
| PTL-BA0001   | Driver(Large)                     | 35   | J-9     |           |               |      |         |           |               |      |         |
| PTL-BA0002   | Driver(Middle, Small)             | 35   | J-10    |           |               |      |         |           |               |      |         |
| PWS-AA0005   | Flat Washer                       | 31   | H-18    |           |               |      |         |           |               |      |         |
| PWS-AA0035   | Washer                            | 21   | E-25    |           |               |      |         |           |               |      |         |
| PWS-CA0001   | Spring Washer                     | 31   | H-19    |           |               |      |         |           |               |      |         |
| PWS-CA0002   | Washer                            | 33   | I-1-2   |           |               |      |         |           |               |      |         |
| PWS-CA0004   | Spring Washer                     | 9    | A-39    |           |               |      |         |           |               |      |         |
| PWS-CA0005   | Spring Washer For Bracket         | 15   | D-56    |           |               |      |         |           |               |      |         |
| SC-001912    | Hinge Screw For Knee Letter Plate | 21   | E-34    |           |               |      |         |           |               |      |         |
| SC-A104-4517 | Screw(11/64-40-5)                 | 31   | H-7     |           |               |      |         |           |               |      |         |
| ST-000287    | Shaft For Pedal Control Lever     | 39   | K-42    |           |               |      |         |           |               |      |         |
| WS-000630    | Rubber Washer                     | 19   | D-113   |           |               |      |         |           |               |      |         |
| -            | Connector Pin                     | 39   | K-27    |           |               |      |         |           |               |      |         |
| -            | Nail                              | 35   | J-17    |           |               |      |         |           |               |      |         |
| -            | Needle                            | 11   | B-42    |           |               |      |         |           |               |      |         |
| -            | Needle                            | 11   | B-43    |           |               |      |         |           |               |      |         |
| -            | Needle                            | 35   | J-19    |           |               |      |         |           |               |      |         |
| -            | Needle                            | 35   | J-20    |           |               |      |         |           |               |      |         |
| -            | Shaft(A) For Solenoid             | 39   | K-9     |           |               |      |         |           |               |      |         |
| -            | Shaft(B) For Solenoid             | 39   | K-8     |           |               |      |         |           |               |      |         |
|              |                                   |      |         |           |               |      |         |           |               |      |         |
|              |                                   |      |         |           |               |      |         |           |               |      |         |
|              |                                   |      |         |           |               |      |         |           |               |      |         |
|              |                                   |      |         |           |               |      |         |           |               |      |         |
|              |                                   |      |         |           |               |      |         |           |               |      |         |
|              |                                   |      |         |           |               |      |         |           |               |      |         |
|              |                                   |      |         |           |               |      |         |           |               |      |         |
|              |                                   |      |         |           |               |      |         |           |               |      |         |
|              |                                   |      |         |           |               |      |         |           |               |      |         |
|              |                                   |      |         |           |               |      |         |           |               |      |         |
|              |                                   |      |         |           |               |      |         |           |               |      |         |
|              |                                   |      |         |           |               |      |         |           |               |      |         |
|              |                                   |      |         |           |               |      |         |           |               |      |         |
|              |                                   |      |         |           |               |      |         |           |               |      |         |
|              |                                   |      |         |           |               |      |         |           |               |      |         |
|              |                                   |      |         |           |               |      |         |           |               |      |         |
|              |                                   |      |         |           |               |      |         |           |               |      |         |
|              |                                   |      |         |           |               |      |         |           |               |      |         |
|              |                                   |      |         |           |               |      |         |           |               |      |         |
|              |                                   |      |         |           |               |      |         |           |               |      |         |
|              |                                   |      |         |           |               |      |         |           |               |      |         |
|              |                                   |      |         |           |               |      |         |           |               |      |         |
|              |                                   |      |         |           |               |      |         |           |               |      |         |
|              |                                   |      |         |           |               |      |         |           |               |      |         |
|              |                                   |      |         |           |               |      |         |           |               |      |         |
|              |                                   |      |         |           |               |      |         |           |               |      |         |
|              |                                   |      |         |           |               |      |         |           |               |      |         |
|              |                                   |      |         |           |               |      |         |           |               |      |         |
|              |                                   |      |         |           |               |      |         |           |               |      |         |
|              |                                   |      |         |           |               |      |         |           |               |      |         |
|              |                                   |      |         |           |               |      |         |           |               |      |         |
|              |                                   |      |         |           |               |      |         |           |               |      |         |
|              |                                   |      |         |           |               |      |         |           |               |      |         |
|              |                                   |      |         |           |               |      |         |           |               |      |         |
|              |                                   |      |         |           |               |      |         |           |               |      |         |
|              |                                   |      |         |           |               |      |         |           |               |      |         |
|              |                                   |      |         |           |               |      |         |           |               |      |         |
|              |                                   |      |         |           |               |      |         |           |               |      |         |
|              |                                   |      |         |           |               |      |         |           |               |      |         |
|              |                                   |      |         |           |               |      |         |           |               |      |         |
|              |                                   |      |         |           |               |      |         |           |               |      |         |
|              |                                   |      |         |           |               |      |         |           |               |      |         |
|              |                                   |      |         |           |               |      |         |           |               |      |         |
|              |                                   |      |         |           |               |      |         |           |               |      |         |
|              |                                   |      |         |           |               |      |         |           |               |      |         |
|              |                                   |      |         |           |               |      |         |           |               |      |         |
|              |                                   |      |         |           |               |      |         |           |               |      |         |
|              |                                   |      |         |           |               |      |         |           |               |      |         |
|              |                                   |      |         |           |               |      |         |           |               |      |         |
|              |                                   |      |         |           |               |      |         |           |               |      |         |
|              |                                   |      |         |           |               |      |         |           |               |      |         |