



PARTS BOOK

KM-250AU-7S	KM-250AU-7N
KM-250A-7S	KM-250A-7N
KM-250B-7S	KM-250B-7N
KM-250BH-7S	KM-250BH-7N
KM-250BL-7S	KM-250BL-7N
KM-250AU	KM-250A
KM-250B	KM-250BH
KM-250BL	

For 1- Needle,

Straight Lock-Stitch Machine Series

PME-131022

Information

A. Parts Book 구성

Structure of Part Book

① **A** Arm, Bed & Machine Body Mechanism
팔, 침대 및 의장품 관계

④ ⑤ ⑥ ⑦ ⑧ ⑨

Ref. No.	Parts No.	Note	Name of Parts	중량	Q'ty	Assembly No.
A-1	01-12841-03		Arm	오염	1	
A-2	01-10073-06		Bed	베드	1	
A-4	01-02120-00		Face Plate	면판	1	
A-5	01-02044-12H		Face Plate Gasket	면판 가스켓	1	
A-6	01-1174-4122		Screw(L)1/84*mm2	볼트	10	
A-7	01-11011-123D		Rubber Cap For Face Plate	면판 고무캡	2	
A-9	01-00194-123D		Caution S/Screw	경고 스크류	1	
A-8	01-011973-00		Thermap Layer Cover	보온층 피막	1	
A-10	01-02020-00		Screw(S)1/84*mm2	볼트(S)1/84*mm2	1	
A-11	01-01746-00		Bed Cover(L)	베드 커버(좌)	1	
A-12	01-01441-123H		Bed Cover(Gasket,L)	베드 커버 가스켓(좌)	1	
A-13	01-02643-123D		Screw(L)1/84*mm2	볼트(L)1/84*mm2	14	
A-13-1	45-0244-1002		Washer	와셔	2	
A-14	01-01752-00		Bed Cover(R)	베드 커버(우)	1	
A-15	01-01744-123H		Bed Cover(Gasket,R)	베드 커버 가스켓(우)	1	
A-16	440211-100H		Tank Rubber Cap	고압 탱크 고무캡	1	
A-17	01-0274-123D		Thread Guide with Three Poles	세극용 실선지(3극)	15Set	
A-19	01-0201-123D		Thread Guide(L)	실선지(좌)	1	
A-20	01-0202-123D		Thread Guide(R)	실선지(우)	3	
A-21	01-0100-123D		Thread Guide(H)	실선지(중)	1	
A-22	01-01643-00		Arm Thread Guide Assy	오염 실선지 실리(중)	1	
A-23	11-0175-752D		Nut	너트	1	
A-24	01-0201-123H		Thread Guide(L)	실선지(좌)	1	
A-25	010275-100H		Silicon Tank Assy	실리콘 탱크 용접(중)	15Set	
A-26	010206-100H		Silicon Tank	실리콘 탱크	1	
A-27	010206-100H		Silicon Oil Window	실리콘 유창	1	
A-28	010240-100H		Silicon Part	실리콘 부품 용접	1	
A-29	01-01953-00		Part for Silicon Oil Supply	실리콘 공급 부품 실선지	1	
A-30	01-0164-123D		Screw(L)1/84*mm2	볼트(L)	1	
A-31	04-0416-123D		Arm Upper Part Rubber Cap	오염 상부 고무 캡	2	
A-33	04-0201-123H		Needle Bar Rubber Cap	바늘봉 고무 캡	1	
A-34	01-04316-042L		Rubber Cap(L)	고무캡(좌)	4	
A-35	44-02116-742D		Rubber Cap(R)	고무캡(우)	7	
A-36	01-0175-123D		Bed Rubber	베드 고무	1	
A-37	01-019817-00		Welder (Sticker,H)	고열 스티커-수용용	1	
A-38	01-019818-00		M Welder (Sticker,M)	고열 스티커-일반용	1	
A-39	01-019819-00		L Welder (Sticker,L)	고열 스티커-대용량	1	
A-40	01-019820-00		K Welder (Sticker,K)	고열 스티커-대용량	1	
A-41	01-02110-123D		Welder (Sticker)	고열 용접(일반)	2	
A-42	01-02114-123H		Tap Cover	탭 덮개	1	
A-43	41-0114-123H		Silobin Winder Assy	실린(좌)	15Set	
A-44	41-02011-100H		Silobin Winder (Base Assy)	실린기 베이스(좌)	1	
A-45	41-0202A-123H		Silobin Winder (Shaft)	실린기 구동축	1	
A-46	01-02010-00		Silobin Winder (Shaft)	베드 실린기 축	1	
A-47	01-02010-750D		Screw(M)	볼트(M)	1	
A-48	41-02001-100H		Silobin Winder	실린기 체결리	1	
A-49	01-0104-552T		Screw(L)1/84*mm2	볼트(L)	2	
A-50	41-02001-100H		Silobin Winder Action Ring	실린기 체결링	1	
A-51	41-02001-100H		Silobin Winder Shaft Rubber Ring	실린기 구동축 고무링	1	
A-52	41-02010-100H		Silobin Winder Screw	실린기 볼트	1	
A-53	41-02011-100H		Silobin Winder Adjusting Plate	실린기 조정판	1	
A-54	01-0110-123D		Screw(L)1/84*mm2	볼트(L)1/84*mm2	1	
A-55	01-0118-123D		Washer	와셔	1	
A-56	41-02011-100H		Silobin Winder Lower Shaft	실린기 하부 축	1	
A-57	41-02014-100H		Silobin Winder Adjusting Term	실린기 조정 탭	1	
A-58	0102150-04113		Screw(M)K2.7	볼트(M)	1	

Note: P= Heavy Material(중량재), M=Medium Material(일반재), M= Pneumatic Heavy Material(공압식 중량재)
L= Light Material(저중량), K=Kitt Material(커트재), EL=Large Shuble Hole(대 시틀 홀)

①:관계 별 고유 코드

Unique code by mechanism

②:관계 별 고유 명칭

Unique name by mechanism

③:관계도

Explode view

④Ref.No.:파트별 고유 식별 번호

Unique identification number by part

⑤Parts No.:고유 제품 코드

Unique Product code

Ex)

구분 Category	Code	비고 remarks
구 부품 Old part	01-030C-1230	
신 부품 New Part	AS-000000-00	조(조) 파트 Set parts
	GP-000000-00	기구적 파트 Instrumental parts
	EP-000000-00	전기적 파트 Electrical parts

⑥Note:공지사항 표기 및 메모

Refers to notice and memo

⑦품

명:파트의 고유 품명

Name of Part:Unique name of parts

⑧Q'ty :파트의 수량

The number of parts

⑨Assembly no.:조(조) 파트의 식별 번호

Unique identification number by set part

Warning

1. 조에 속한 파트는 개별 조립 시 제품의 파손 또는 재봉 불량 발생될 수 있어 해당 파트에 대한 주문 시에는 조 품목으로만 구입이 가능합니다.
2. 본 책자는 Parts Book으로 제작되었으므로 매뉴얼로 사용 불가합니다.
3. 사전 예고 없이 사양이 변경 될 수도 있습니다.

1. The parts classified as ass'y items may cause damage to the machine or bad sewing when they are separately assembled. Hence, when they are ordered, they can be purchased as ass'y items only.
2. This is a parts book. It cannot be used as a manual.
3. Parts are Subject to change in Design Without Prior Notice.

Note

- 썬스타 제품의 부품은 아래 인터넷주소로 접속하시어 신청할 수 있습니다.
<http://www.sunstarcs.com>
- 가입된 회원께서는 썬스타 포탈 사이트에 로그인후 필요한 부품을 신청할 수 있습니다.
- 부품관리-발주관리-발주등록 항목에서 부품번호와 신청수량을 입력하여 등록하시면 발주가 됩니다.
- 부품번호를 모르시는 경우 파츠북 조회를 클릭하시고 사용하는 기종을 검색하여 선택하시면 해당 기종의 파츠북을 조회할 수 있습니다.
- 파츠북은 관계별로 구분되어 있으며 관계를 알고 있다면 부품 찾기가 용이합니다.
- You can make an order for the parts of Sunstar machine to connect internet address.
<http://www.sunstarcs.com>
- You can request for parts you want after login if you are a registered member.
- In parts Management - Order Management - Order Registration entry, you can place an order by entering the part number and quantity.
- If you don't know the parts number, click the parts book menu bar.
In a download list, you can read parts book by searching model you use.
- This parts book is classified by the mechanism, therefore you can find part easily.

MODEL

FOR NEW MATERIAL AND EXTREME THIN MATERIAL

● **KM-250AU-7S**

1-NEEDLE, STRAIGHT LOCK-STITCH MACHINE WITH THREAD TRIMMER DRIVEN BY SERVO MOTOR

● **KM-250AU-7N**

1-NEEDLE, STRAIGHT LOCK-STITCH MACHINE WITH THREAD TRIMMER DRIVEN BY NEEDLE POSITIONING MOTOR

● **KM-250AU**

1-NEEDLE, STRAIGHT LOCK-STITCH MACHINE

FOR THIN MATERIAL

● **KM-250A-7S**

1-NEEDLE, STRAIGHT LOCK-STITCH MACHINE WITH THREAD TRIMMER DRIVEN BY SERVO MOTOR

● **KM-250A-7N**

1-NEEDLE, STRAIGHT LOCK-STITCH MACHINE WITH THREAD TRIMMER DRIVEN BY NEEDLE POSITIONING MOTOR

● **KM-250A**

1-NEEDLE, STRAIGHT LOCK-STITCH MACHINE

FOR THICK MATERIAL

● **KM-250B-7S**

1-NEEDLE, STRAIGHT LOCK-STITCH MACHINE WITH THREAD TRIMMER DRIVEN BY SERVO MOTOR

● **KM-250B-7N**

1-NEEDLE, STRAIGHT LOCK-STITCH MACHINE WITH THREAD TRIMMER DRIVEN BY NEEDLE POSITIONING MOTOR

● **KM-250B**

1-NEEDLE, STRAIGHT LOCK-STITCH MACHINE

FOR HEAVY MATERIAL

● **KM-250BH-7S**

1-NEEDLE, STRAIGHT LOCK-STITCH MACHINE WITH THREAD TRIMMER DRIVEN BY SERVO MOTOR

● **KM-250BH-7N**

1-NEEDLE, STRAIGHT LOCK-STITCH MACHINE WITH THREAD TRIMMER DRIVEN BY NEEDLE POSITIONING MOTOR

● **KM-250BH**

1-NEEDLE, STRAIGHT LOCK-STITCH MACHINE

FOR HEAVY MATERIAL

● **KM-250BL-7S**

1-NEEDLE, STRAIGHT LOCK-STITCH MACHINE WITH THREAD TRIMMER DRIVEN BY SERVO MOTOR & LARGE HOOK

● **KM-250BL-7N**

1-NEEDLE, STRAIGHT LOCK-STITCH MACHINE WITH THREAD TRIMMER DRIVEN BY NEEDLE POSITIONING MOTOR & LARGE HOOK

● **KM-250BL**

1-NEEDLE, STRAIGHT LOCK-STITCH MACHINE WITH LARGE HOOK

CONTENTS

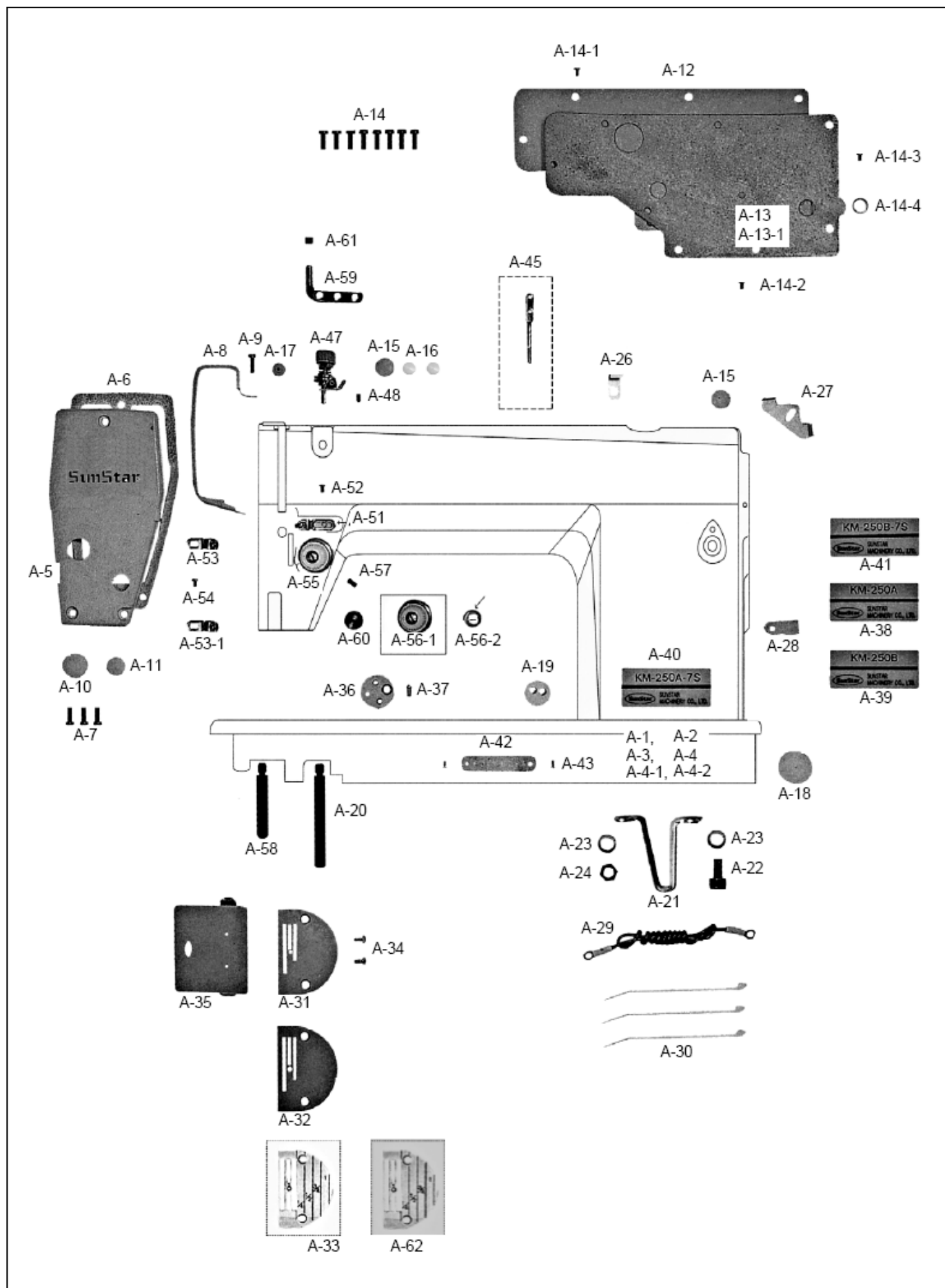
목 차

A	Machine Body & Thread Tension Adjusting Mechanism 외장 및 실장력 조절 관계	6
B	Upper Shaft & Needle Bar Mechanism 상축 & 바늘대 관계	10
C	Upright Shaft & Lower Shaft Mechanism 세운축 및 하축 관계	12
D	Feed Mechanism 피이드 관계	14
E	Thread Trimmer Mechanism 사절 관계	20
F	Presser Foot & Tension Release Mechanism 노루발 및 실 늦추기 관계	24
G	Thread Wiper Mechanism 와이퍼 관계	26
H	Reverse Button Mechanism 역진 버튼 관계	28
I	Lubrication Mechanism 급유 관계	30
J	Accessories Mechanism 액세서리 관계	32
K	Program Unit Box & Auto Presser Lifting Solenoid Mechanism(Option Parts: SPF-5) 프로그램 유닛 박스 및 자동 무릎올림 관계	36
L	Special Parts For KM-250AU Series Mechanism KM-250AU 시리즈 전용 부품 관계	38
M	Special Parts For (KM-250AU-7N, KM-250A-7N, KM-250B-7N) Mechanism [KM-250AU-7N, KM-250A-7N, KM-250B-7N] 전용 부품 관계	40
N	Special Parts For KM-250BH Series Mechanism KM-250BH 시리즈 전용 부품 관계	42
O	Special Parts For KM-250BL Series Mechanism KM-250BL 시리즈 전용 부품 관계	44
P	Special Parts For KM-250BL Series Mechanism KM-250BL 시리즈 전용 부품 관계	46
	Index 인덱스	48

A

Machine Body & Thread Tension Adjusting Mechanism

외장 & 실장력 조절 관계





Ref. No.	Parts No.	Note	Name of Parts	품 명	Q'ty	Applied Period
A-1	01-001A-250A	A	Arm. Bed Ass'y	아암. 베드(조)	1Set	
A-2	01-001A-250B	B	Arm. Bed Ass'y	아암. 베드(조)	1Set	
A-3	01-001A-257A	A-7	Arm. Bed Ass'y	아암. 베드(조)	1Set	
A-4	01-001A-257B	B-7	Arm. Bed Ass'y	아암. 베드(조)	1Set	
A-4-1	01-001A-25BL		Arm. Bed Ass'y	아암. 베드(조)	1Set	Apr. 05. 11
A-4-2	01-001A-2BLS		Arm. Bed Ass'y	아암. 베드(조)	1Set	
A-5	CMB-LA004200		Face Plate	면판	1	
A-6	CMB-FC002300		Gasket	면판 가스켓	1	
A-7	DSC-BF008400		Screw(3/16"n=28)	무릎올림 링크 고정나사(3/16"n=28)	3	
A-8	CMB-LA004300		Thread Take Up Cover	실채기 커버	1	
A-9	DSC-BF000600		Screw(3/16"n=28)	다이알 판 짐나사(3/16"n=28)	1	
A-10	DPK-CB000900		Face Plate Rubber Cap(L)	면판 고무마개(大) 흰색(3-1)	1	
A-11	DPK-CB000200		Face Plate Rubber Cap(S)	면판 고무마개(中) 흰색(3)	1	
A-12	01-140C-2500		Back Cover	뒷뚜껑(STD)	1	
A-13	CMB-FC002400		Gasket	뒷뚜껑 가스켓(ST)	1	
A-13-1	01-142M-2500		Gasket	뒷뚜껑 가스켓(AK)	1	
A-14	DSC-BF000600	A,B	Screw(3/16"n=28)	다이알판 짐나사(3/16"n=28)	8	
A-14-1	DSC-BF008400	A-7,B-7	Screw(3/16"n=28)	무릎올림 링크 고정나사	3	
A-14-2	DSC-BF000600	A-7,B-7	Screw(3/16"n=28)	다이알판 짐나사	5	
A-14-3	DSC-BA001800	A-7,B-7	Screw(9/64"n=40)	톱카바 나사(좌)	1	
A-14-4	DWS-AA003800	A-7,B-7	Washer	상축 헬트 와셔	1	
A-15	DPK-CB000200		Arm Rubber Cap(L)	면판 고무마개(中) 흰색(3)	2	
A-16	DPK-CB000400		Arm Rubber Cap(S)	고무마개(소)	2	
A-17	DPK-CB002300	A-7,B-7	Rubber Cap	바늘대 상봇싱 마개	1	Mar.25.09
A-18	DPK-CA000600		Bed Rubber Cap	하축 후봇싱 고무마개	1	
A-19	DPK-CC000300		Code Bushing	코드 붓싱	1	
A-20	DSC-HC000300		Bed Base "FRONT"(A-TYPE)	베드 받침(전)	1	
A-21	CMB-BB004500		Bed Base(R)	베드 받침	1	
A-22	PSC-AC002600		Screw(M8×1.25)	베드 받침 후 결합 볼트(M8×1.25)	1	
A-23	PWS-CA000400		Spring Washer	베드 받침 스프링 와셔	2	
A-24	PSN-AA000500	A-7,B-7	Nut(M8×1.25)	베드 받침 너트(M8×1.25)	1	
A-26	DTC-AH000200	A-7,B-7	Code Holder "A"	코드잡이"A"	1	
A-27	DTC-AH001100	A-7,B-7	Code Holder "B"	코드잡이"B"	1	
A-28	PTC-AH000200	A-7,B-7	Code Holder(7N)	케이블 잡이A(7N)	1	
A-29	12-016M-2350	A,A-7	Earth Line	어스선(조)	1	
A-30	PTC-AG000100	B,B-7	Nylon Clip	나이론 클립	3	
A-31	CGA-GA000201	A,A-7	Needle Plate(A-TYPE)	바늘판(A形)	1	Jun.18.12
A-32	CGA-GA002001	B,B-7	Needle Plate(B-TYPE)	바늘판(B形)	1	Jun.18.12
A-33	CGA-GA001200		Needle Plate(BH-TYPE)	침판(마그린)	1	
A-34	DSC-BC000100		Screw(11/64"n=40)	침판나사(11/64"n=40)	2	
A-35	CMB-LB004400		Slide Plate	미끄럼판(緋)	1	
A-36	CMB-BJ002400	A	Gauge Plate	게이지 부착판	1	
A-37	01-136S-1230		Screw(11/64"n=40)	침판나사(11/64"n=40)	1	
A-38	GP-009247-00	A-7	Model Mark(KM-250A)	모델마크(KM-250A)	1	
A-39	01-045M-250B	B-7	Model Mark(KM-250B)	모델마크(KM-250B)	1	
A-40	GP-009253-00		Model Mark(KM-250A-7S)	모델마크(KM-250A-7S)	1	
A-41	GP-009254-00		Model Mark(KM-250B-7S)	모델마크(KM-250B-7S)	1	
A-42	CMB-BJ006600		Machine Number Plate	번호판	1	
A-43	PPN-AD000100		Pin	번호판 핀	2	
A-45	CMB-HK002000	A-7,B-7	Upper Thread Guide Pin and Nut	실 안내봉	1	
A-47	ATA-PS001201	A,B	Sub Upper Thread Tension Control Ass'y	보조 사조자	1Set	
A-48	DSC-CA001600	A,B	Screw(11/64"n=40)	실 늦추기 고정나사(11/64"n=40)	1	
A-51	CMB-HK000500	A,A-7	Arm Thread Guide	암 실걸이	1	
A-52	DSC-BA000100	B,B-7	Screw(9/64"n=40)	오일 펌프 카바 나사(9/64"n=40)	1	
A-53	CMB-HK001900		Thread Guide	면판 실걸이	1	
A-53-1	CMB-HK000100	A,A-7	Thread Guide	면판 실걸이	1	
A-54	AS-005578-00	B,B-7	Screw(9/64"n=40)	오일 펌프 카바 나사(9/64"n=40)	1	

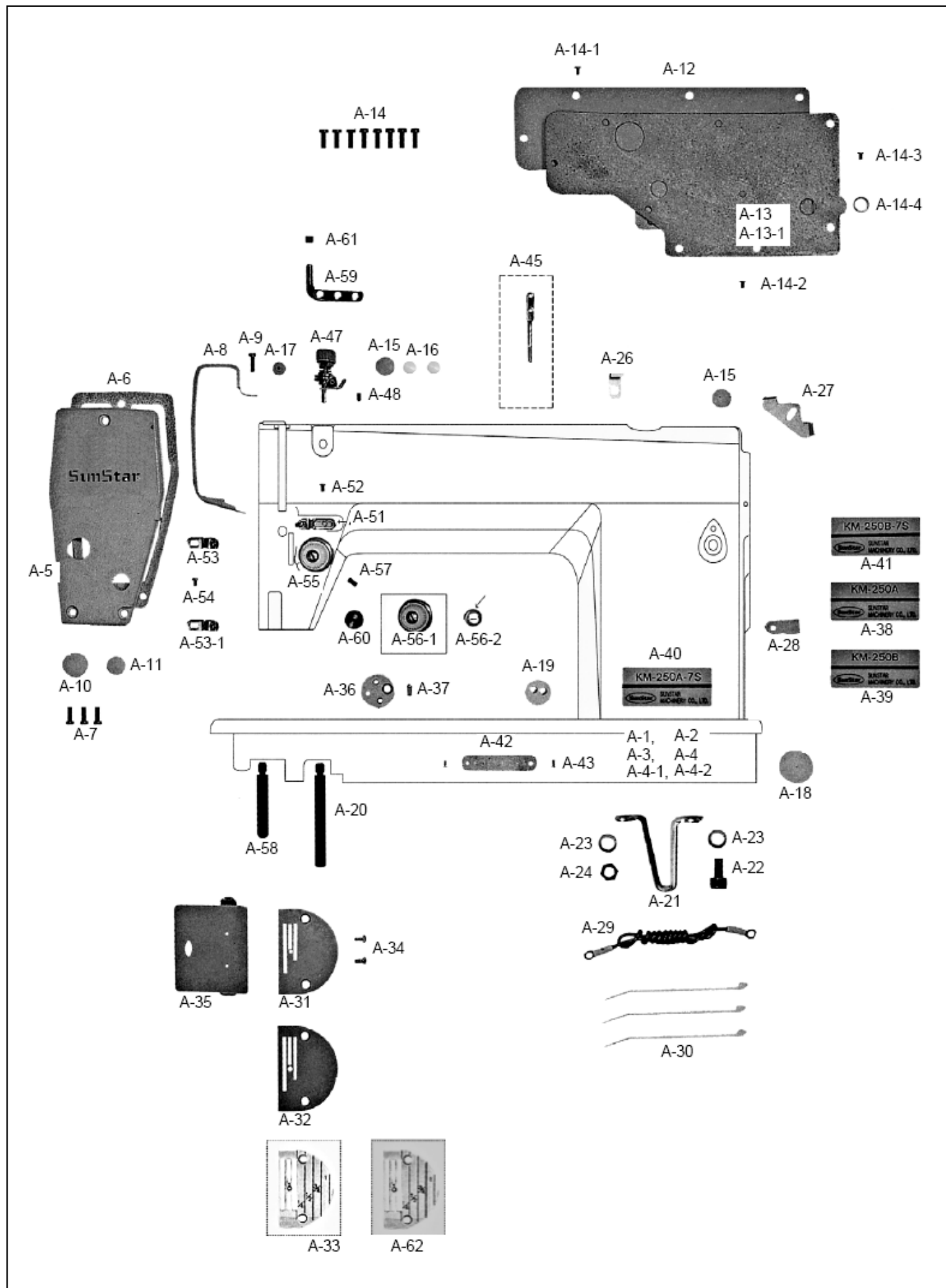
NOTE:

A-7-KM-250A-7S
 B-7-KM-250B-7S
 A-KM-250A
 B-KM-250B
 =Common Part

A

Machine Body & Thread Tension Adjusting Mechanism

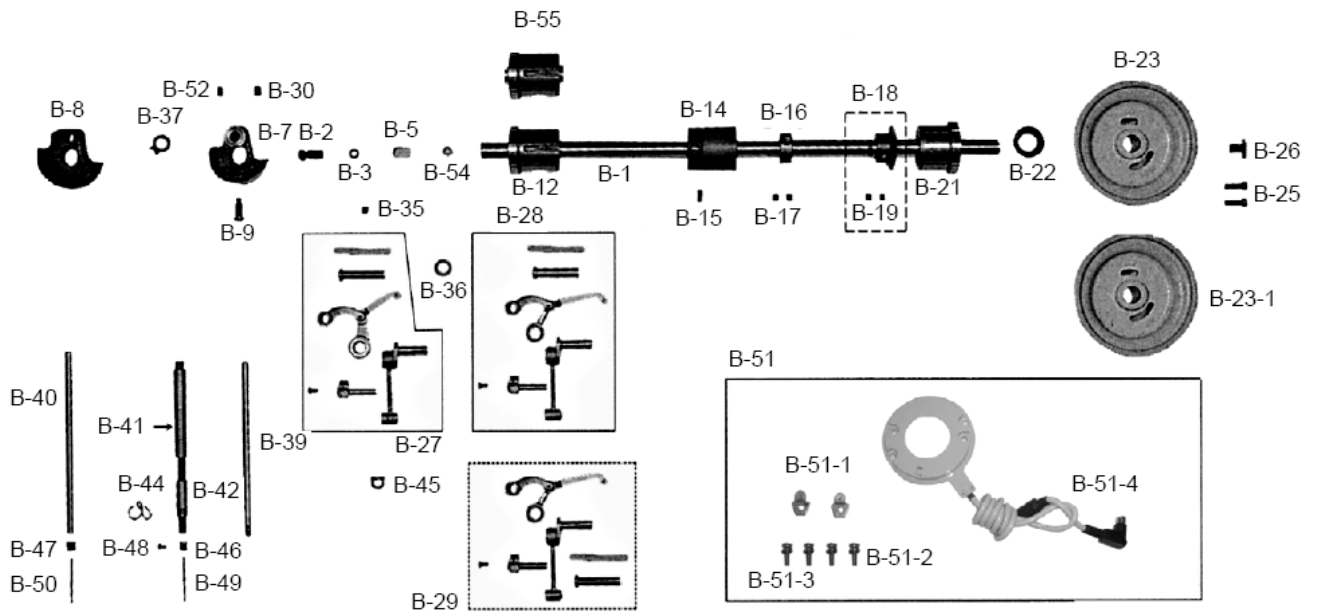
외장 & 실장력 조절 관계



B

Upper Shaft & Needle Bar Mechanism

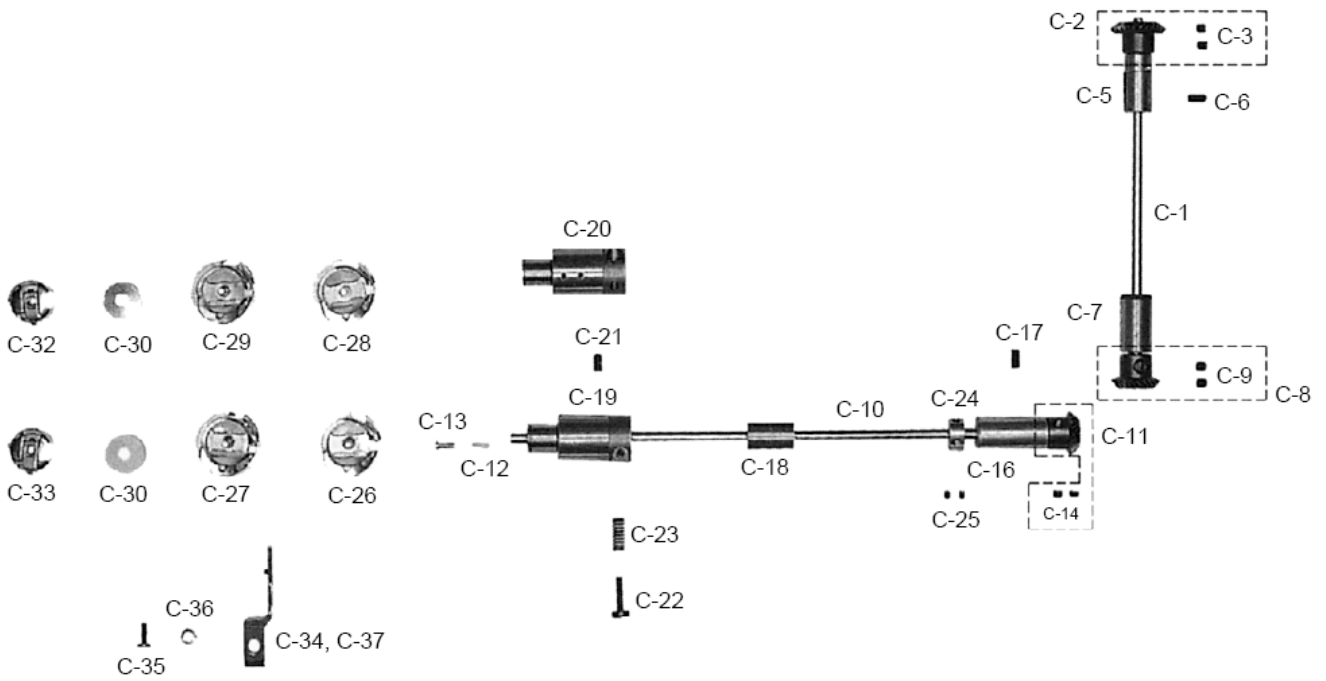
상축 및 바늘대 관계



C

Upright Shaft & Lower Shaft Mechanism

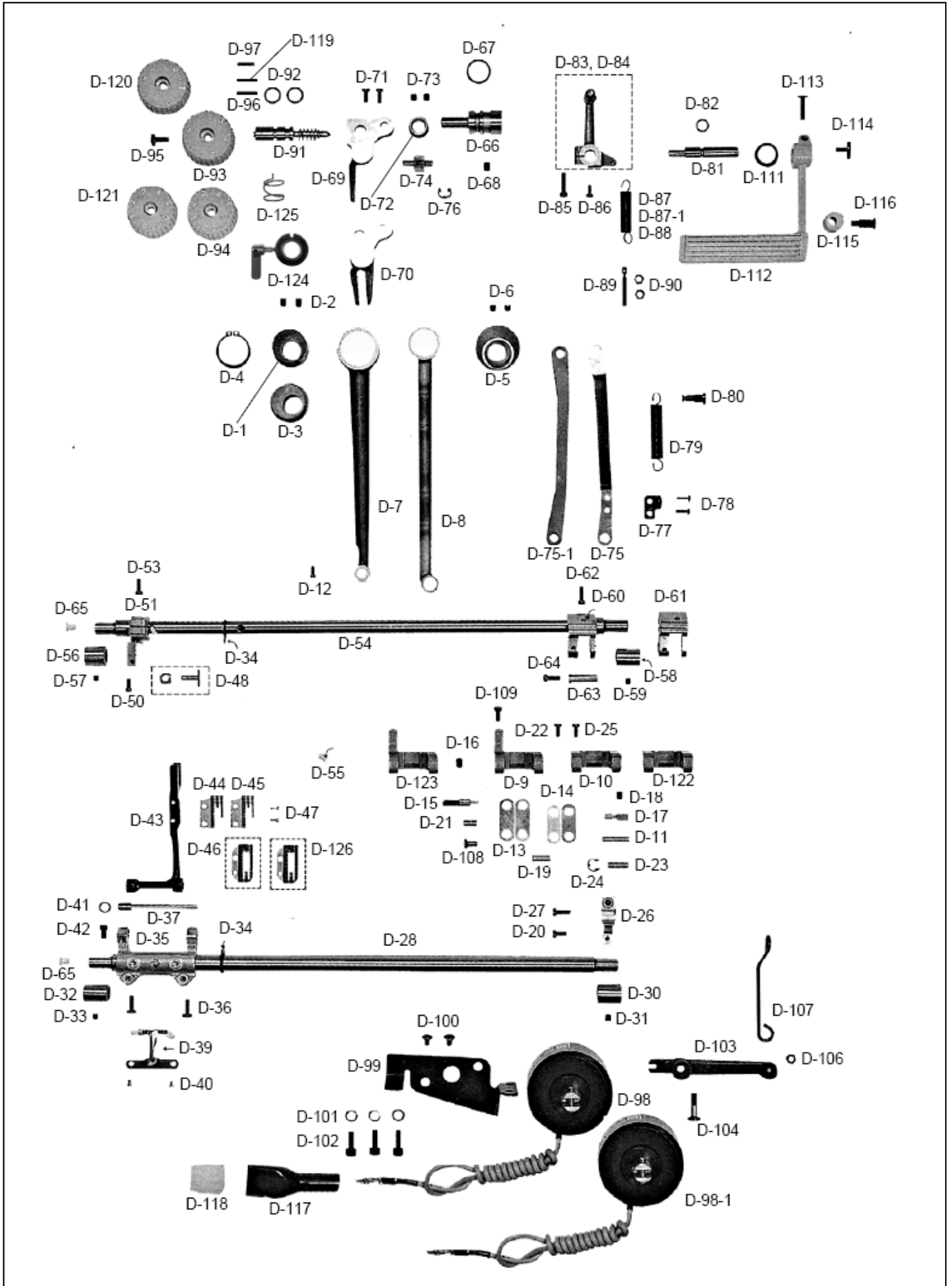
세운축 및 하축 관계



D

Feed Mechanism

피이드 관계



Ref. No.	Parts No.	Note	Name of Parts	품 명	Q'ty	Applied Period
D-1	CLF-DC000100	A,A-7	Feed Cam A	피이드 캠 A	1	
D-2	DSC-CA001900		Screw(1/4"n=40)	기어 나사(1/4"n=40)	2	
D-3	06-101A-250B	B,B-7	Feed Cam B	피이드 캠 B	1	
D-4	PSR-AA000400		Stop-Ring "C"	스냅링 28#D	1	
D-5	CLF-DC000200		Feed Cam C	피이드 캠 C	1	
D-6	DSC-CA001100		Screw(1/4"n=40)	실채기 핀 고정나사(1/4"n=40)	2	
D-7	CLF-CC000100		Feed Rocker Shaft Connecting Rod	수평이송 룯드	1	
D-8	CLF-CC000200		Crank Rod	크랭크 룯드	1	
D-9	CFA-CA000300	A-7,B-7	Feed Regulator Link	피이드 조절 링크	1	
D-10	CFA-CA001300	A,B	Feed Regulator Link	피이드 조절 링크	1	
D-11	DPN-AA000100		Feed Connection Link Pin(A)	피이드 연결 링크핀(A)	1	
D-12	DSC-BF006300		Screw(11/64"n=40)	하축 뒷 붓심 짐나사(11/64"n=40)	1	
D-13	CLF-CA000200		Feed Connection Link(A)	피이드 연결링크(A)	2	
D-14	CLF-CA000300		Feed Connection Link(B)	피이드 연결링크(B)	2	
D-15	DPN-BC001000		Feed Adjusting Link Hinge Pin(A)	피이드 조절링크 힌지핀(A)	1	
D-16	DSC-CA001100		Screw(1/4"n=40)	실채기 핀 고정나사(1/4"n=40)	1	
D-17	DPN-BC001100		Feed Adjusting Link Hinge Pin(B)	피이드 조절 링크 힌지 핀(B)	1	
D-18	DSC-CB000400		Screw(1/4"n=40)	실채기 핀 고정나사(1/4"n=40)	1	
D-19	DPN-AA003900		Feed Connection Link Pin(B)	피이드 연결 링크핀(B)	1	
D-20	DSC-BF006300		Screw(11/64"n=40)	하축 뒷 붓심 짐나사(11/64"n=40)	1	
D-21	DPN-AA004000		Feed Connection Link Pin(C)	피이드 연결 링크핀(C)	1	
D-22	DSC-BF003600		Screw(11/64"n=40)	와이롯드 보강판 나사(11/64"n=40)	1	
D-23	DPN-AA004100		Hinge Pin	피이드 조절 연결 룯드 힌지핀	1	
D-24	PSR-AC000200		E-Ring(φ5)	E링(φ5)	1	
D-25	DSC-BF003600		Screw(11/64"n=40)	와이롯드 보강판 나사(11/64"n=40)	1	
D-26	CLF-CB000800		Level Feed Crank(R)	수평밀대 크랭크(後)	1	
D-27	DSC-AA001000		Screw(3/16"n=28)	들대고정나사(신)	1	
D-28	CLF-KF000200		Feed Rock Shaft	수평밀대	1	
D-30	DBS-DA006800		Feed Rock Shaft Bushing(R)	들대붓심(후) 11.11×16.8×20	1	
D-31	DSC-CA000100		Screw(15/64"n=28)	실채기 힌지핀 나사(15/64"n=28)	1	
D-32	DBS-DA006700		Feed Rock Shaft Bushing(F)	수평밀대 前붓심 11.11×17.74×16	1	
D-33	DSC-CA000100		Screw(15/64"n=28)	실채기 힌지핀 나사(15/64"n=28)	1	
D-34	CLB-FZ000100		Oil Cover	들밀대 고무마개	2	
D-35	CLF-CB000700		Feed Bar Crank	톱니 받침 크랭크	1	
D-36	DSC-BF002600		Screw(3/16"n=32)	톱니 받침 크랭크 짐나사(3/16"n=32)	2	
D-37	CLF-KH000100		Feed bar Shaft	톱니 받침 축	1	
D-39	CLB-BG002300		Wick Holder	심지 지지대	1	
D-40	DSC-BF007700		Screw(1/8"n=44)	심지 지지대 나사(1/8"n=44)	2	
D-41	DWS-AA001500		Washer	톱니 받침축 와셔	1	
D-42	DSC-BF000400		Screw(15/64"n=28)	톱니 받침축 고정나사(15/64"n=28)	1	
D-43	GP-034931-00		Feed Bar	톱니 받침	1	
D-44	CGA-GB000501	A,A-7	Feed Dog(A-TYPE)	톱니(A形)	1	
D-45	CGA-GB001500	B,B-7	Feed Dog(B-TYPE)	톱니(B形) P=2.1	1	
D-46	CGA-GB001200		Feed Dog(BH-TYPE)(Magrin)	톱니(Magrin)	1	
D-47	DSC-BF001800		Screw(1/8"n=44)	톱니 짐나사(1/8"n=44)	2	
D-48	06-117A-1230		Feed Bar Block and Shaft	톱니 받침 블록	1	
D-50	DSC-BF007900		Screw(3/16"n=32)	톱니 받침B/L 고정나사	1	
D-51	CLF-CB000500		Feed Lifting Shaft Crank(F)	들대 크랭크(前)	1	
D-53	DSC-AA001000		Screw(3/16"n=28)	들대전 고정나사(신)	1	
D-54	CLF-KF000100		Feed Lifting Shaft	들대	1	
D-55	CLB-BG005300		Stopper For Wick	오일 심지 스톱퍼	2	
D-56	DBS-DA007100		Feed Lifting Shaft Bushing(F)	들대 前붓심 11.11×17.46×20	1	
D-57	DSC-CA000100		Screw(15/64"n=28)	실채기 힌지핀 나사(15/64"n=28)	1	
D-58	DBS-DA006800		Feed Lifting Shaft Bushing(R)	들대 後붓심 11.11×16.8×20	1	
D-59	DSC-CA000100		Screw(15/64"n=28)	실채기 힌지핀 나사(15/64"n=28)	1	
D-60	06-038A-235A	A,A-7	Feed Lifting Shaft Crank(R): A-TYPE	들대 크랭크(후)	1	
D-61	06-041A-235B	B,B-7	Feed Lifting Shaft Crank(R): B-TYPE	들대 크랭크(후)	1	

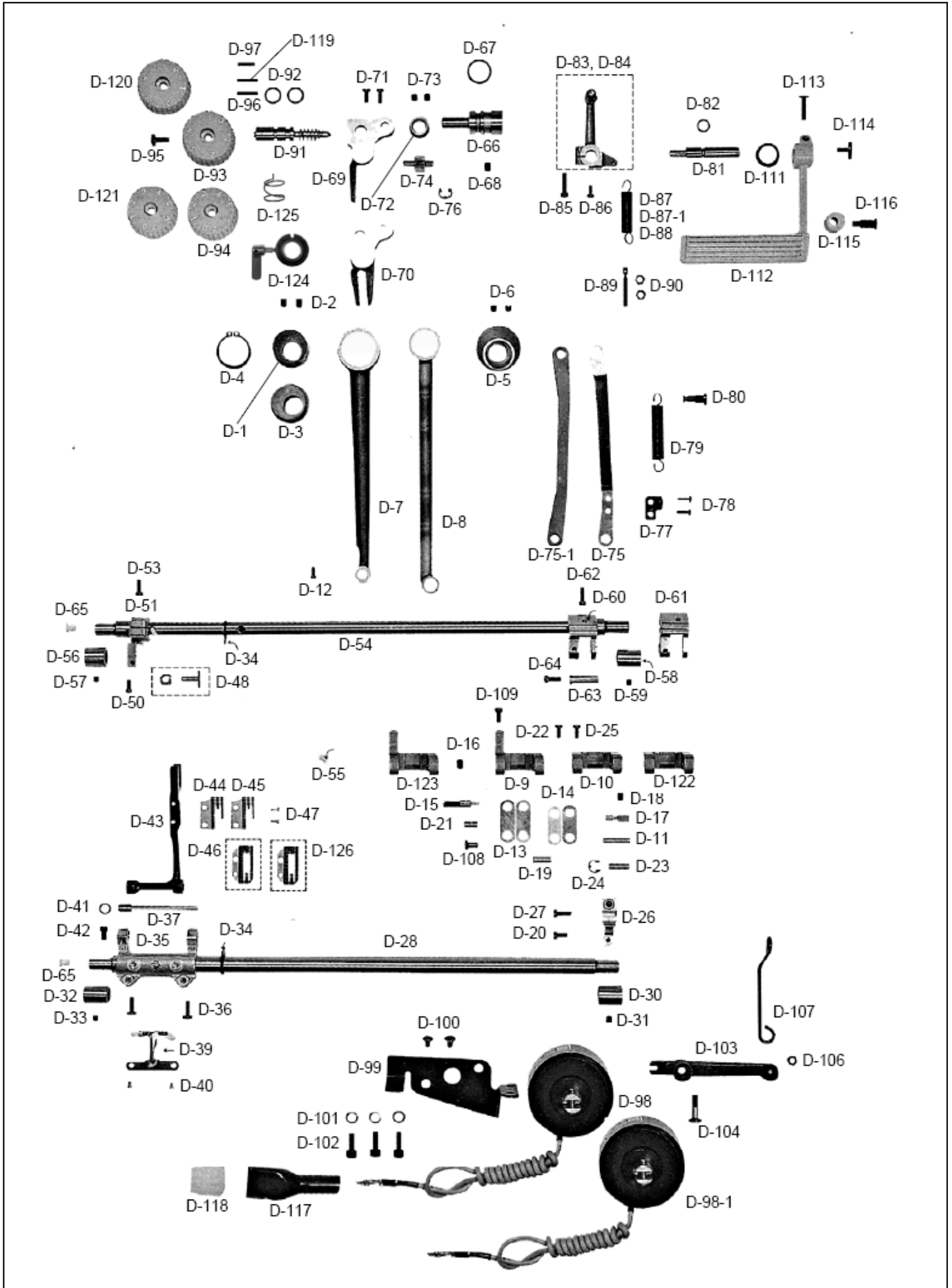
NOTE:

A-7=KM-250A-7S
 B-7=KM-250B-7S
 A=KM-250A
 B=KM-250B
 =Common Part

D

Feed Mechanism

피이드 관계





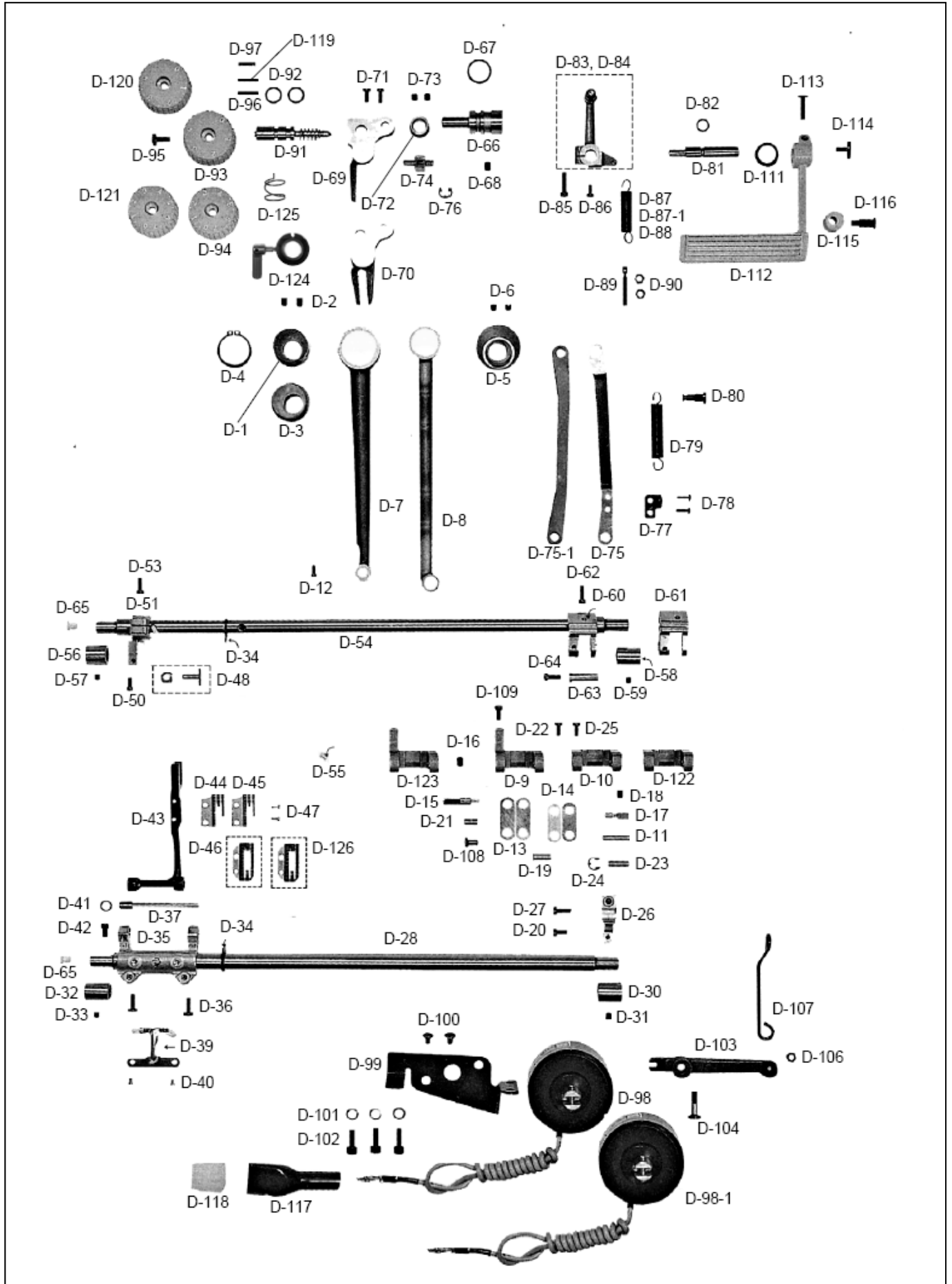
Ref. No.	Parts No.	Note	Name of Parts	품 명	Q'ty	Applied Period
D-62	DSC-AA001000		Screw(3/16"n=28)	틀대전 고정나사(신)	1	
D-63	DPN-AA003600		Crank Rod Connection Pin	틀밀대 크랭크 핀	1	
D-64	DSC-BF003600		Screw(11/64"n=40)	와이롯드 보강판 나사(11/64"n=40)	1	
D-65	01-037R-1230		Rubber Cap	틀밀대 유심마개	2	
D-66	GP-008523-00		Feed Regulator Shaft	피이드 조절기 축	1	
D-67	PPK-BA000800		O-Ring	피이드 조절기 붓심 오링	2	
D-68	DSC-CA000800		Screw(15/64"n=28)	상축 붓심 고정나사(15/64"n=28)	1	
D-69	CFA-DF000101	A-7,B-7	Feed Regulator	피이드 조절기	1	
D-70	CFA-DF000800	A,B	Feed Regulator	피이드 조절기	1	
D-71	DSC-AC005700		Bolt (11/64"n=40)	육각구멍볼트 볼트(11/64"n=40)	2	
D-72	DCL-AA002800		Collar	피이드 조절기 축 카라	1	
D-73	DSC-CA001900		Screw(1/4"n=40)	기어 나사(1/4"n=40)	2	
D-74	CFA-KF000300		Feed Adjusting Shaft	피이드 조절축	1	
D-75	CFA-CC000200	A-7,B-7	Connecting Rod For Feed Regulator	피이드 조절 로드	1	
D-75-1	CFA-CC000900	A,B	Feed Regulator Rod	피이드 조절기 로드	1	
D-76	PSR-AC000200		E-ring(Ø5)	E링(Ø5)	1	
D-77	CFA-BJ000300	A-7,B-7	B/T Spring Holder	자동 역진 스프링 홀더	1	
D-78	DSC-BJ000300	A-7,B-7	Screw(9/64"n=40)	톱카바 나사(우)(9/64"n=40)	2	
D-79	DSP-AB004800	A-7,B-7	Reverse Feed Spring	역진 레버 스프링	1	
D-80	DSC-FH000500	A-7,B-7	Holder	자동 역진 스프링 걸이	1	
D-81	CFA-KF000100		Reverse Feed Control Lever Shaft	역진 레버축	1	
D-82	PPK-BA000700		O-Ring	레버축 오링	1	
D-83	CFA-CB000300	A-7,B-7	Reverse Feed Lever Crank Ass'y	역진 레버 인장 크랭크(조)	(1)	
D-84	AFA-PS000600	A,B	Reverse Feed Lever Crank Ass'y	역진 레버 인장 크랭크(조)	(1)	
D-85	DSC-BA000400		Screw(3/16"n=28)	수평 밀대 크랭크 짐나사(3/16"n=28)	1	
D-86	DSC-BF003100		Screw(11/64"n=40)	가마잡이 나사(11/64"n=40)	1	
D-87	DSP-AB003500	A-7	Spring	역진 레버 스프링	1	
D-87-1	DSP-AB004800	B-7	Spring	역진 레버 스프링	1	
D-88	DSP-AB005100	A,B	Spring	역진 레버 스프링	1	
D-89	DSC-HD000600	A-7,B-7	Holder	스프링걸이 축나사	1	
D-90	DSN-AA000900	A-7,B-7	Nut(11/64"n=40)	스프링걸이 축나사 너트(11/64"n=40)	2	
D-91	CFA-KJ000100		Feed Regulator Dial Shaft	피이드 조절 다이얼 축	1	
D-92	PPK-BA000900		O-Ring	다이얼 축 오링	2	
D-93	CFA-CQ002200	A	Feed Regulator Control Plate(4mm)	다이얼 문자판(4mm)	1	
D-94	CFA-CQ001300	B	Feed Regulator Control Plate(7mm)	다이얼 문자판(7mm)	1	
D-95	DSC-BF001900		Screw(3/16"n=28)	다이얼판 고정나사(3/16"n=28)	1	
D-96	DPN-AA014600	A,B	Pin	다이얼 핀	1	
D-97	DSP-AA002800		Spring	다이얼 스프링	1	
D-98	DSD-AA003000	B-7	Reverse Feed Solenoid Ass'y	역진 솔레노이드(SBT-5)	1Set	
D-98-1	DSD-AA001200	A-7	Reverse Feed Solenoid Ass'y	역진 솔레노이드(SBT-5)	1Set	
D-99	CFA-BB000200	A-7,B-7	Bracket For Reverse Feed Solenoid	역진 솔레노이드 브라켓	1	
D-100	DSC-BB001500	A-7,B-7	Screw(M5×0.8)	역진 솔레노이드 부착나사(M5×0.8)	2	
D-101	PWS-CA000500	A-7,B-7	Spring Washer For Bracket	싱크로 베이스 스프링 와셔(Ø6)	3	
D-102	PSC-AC000600	A-7,B-7	Screw(M6)	싱크로 베이스 고정볼트(M6)	3	
D-103	06-131A-257B	A-7,B-7	Reverse Feed Solenoid Crank	역진 솔레노이드 크랭크	1	
D-104	DSC-FA006300	A-7,B-7	Stud Screw	역진 솔레노이드 크랭크 단나사	1	
D-106	PSN-AA001700	A-7,B-7	Hinge Nut	케이블 연결너트(B)	1	
D-107	CFA-CC000301	A-7,B-7	Reverse Solenoid Connecting Rod	역진 솔레노이드 연결로드	1	
D-108	DPN-AD004000	A-7,B-7	Hinge Pin	역진 솔레노이드 연결로드 힌지핀	1	
D-109	DSC-BF003600	A-7,B-7	Screw(11/64"n=40)	와이롯드 보강판 나사(11/64"n=40)	1	
D-111	DWS-CB000200		Washer	레버 와셔	1	
D-112	CFA-CM000200		Feed Regulator Lever	역진 레버	1	
D-113	DSC-BA001400		Screw(3/16"n=32)	역진 레버 고정나사(3/16"n=32)	1	
D-114	DSC-BJ002400		Screw(3/16"n=32)	레버 덮개 나사(3/16"n=32)	1	
D-115	CFA-FZ000100	A-7,B-7	Stopper Rubber	역진 레버 스톱퍼(상) 고무	1	
D-116	DSC-FA006200	A-7,B-7	Stopper Stud Screw	역진 레버 스톱퍼(상) 단나사	1	
D-117	11-019M-2350	A-7,B-7	Terminal Tube(L)	솔레노이드 튜브	1	

NOTE:
A-7-KM-250A-7S
B-7-KM-250B-7S
A-KM-250A
B-KM-250B
=Common Part

D

Feed Mechanism

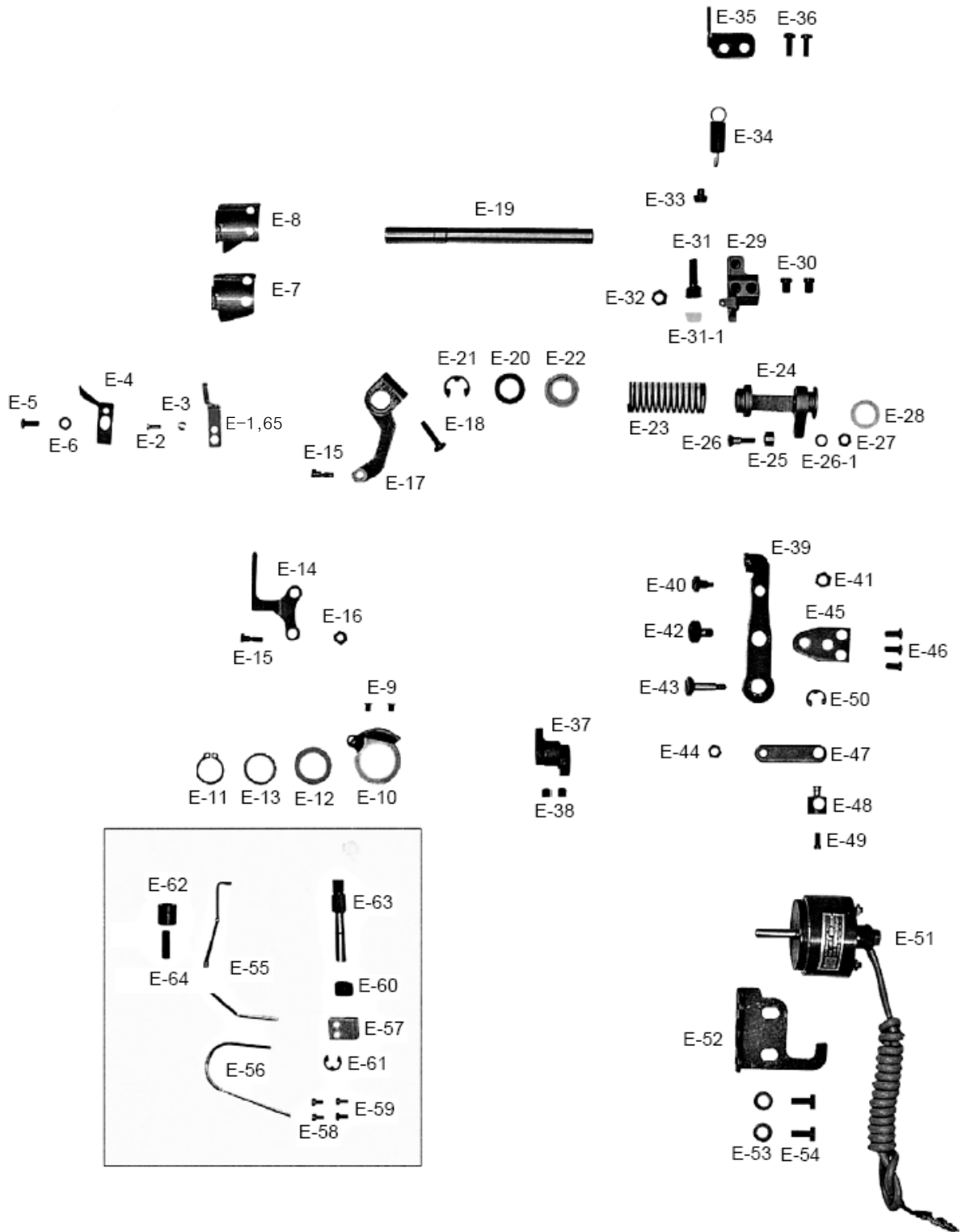
피이드 관계



E

Thread Trimmer Mechanism

사절 관계

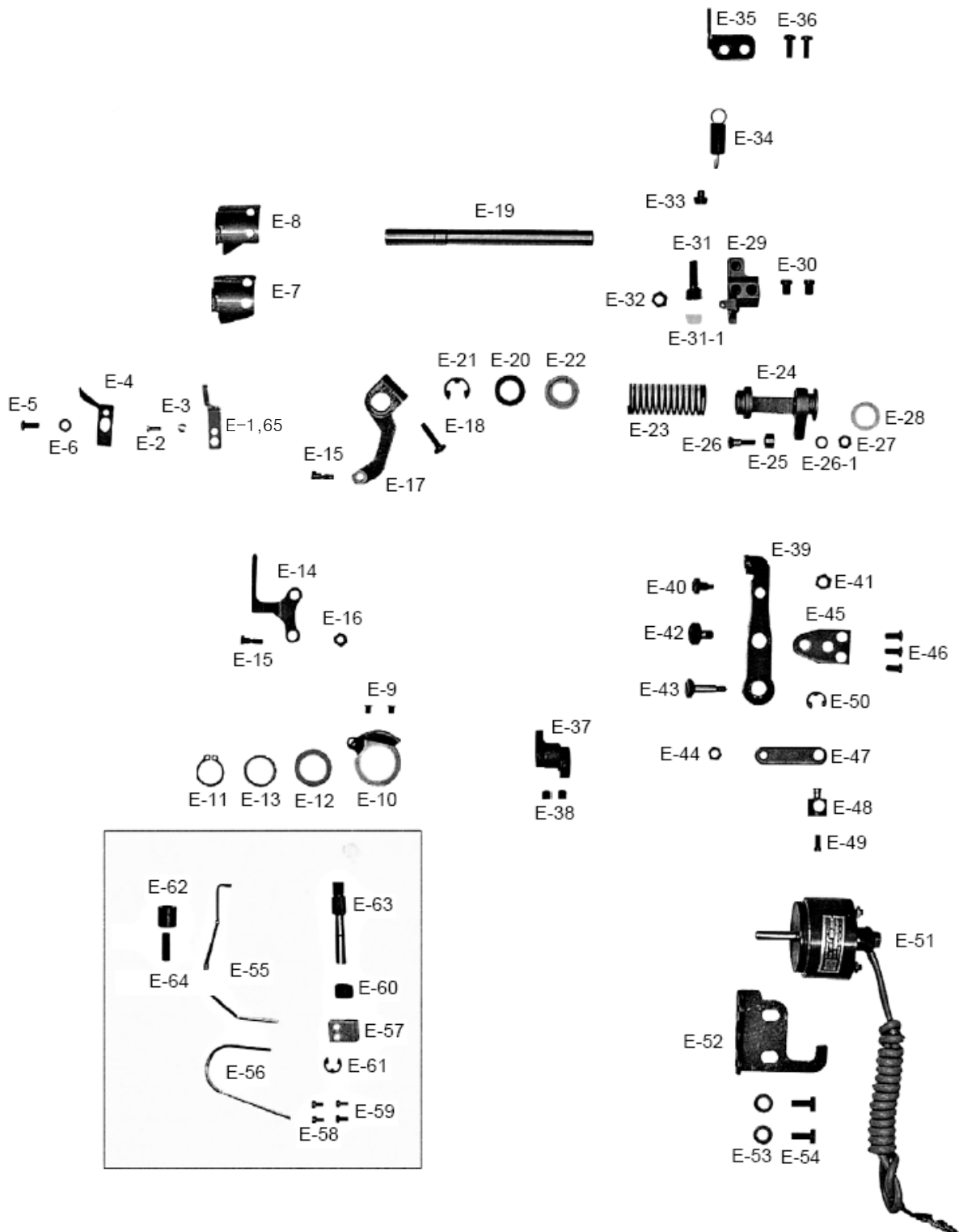




Ref. No.	Parts No.	Note	Name of Parts	품 명	Q'ty	Applied Period
E-1	CTT-NB001100	A-7	Fixed Mes	고정메스	1	
E-2	DSC-BF006200	A-7, B-7	Screw(1/8"n=40)	고정메스 장력 조절나사(1/8"n=40)	1	
E-3	DSN-AA001700	A-7, B-7	Nut(1/8"n=40)	고정메스 장력 조절나사 너트(1/8"n=40)	1	
E-4	CTT-BJ001100	A-7, B-7	Thread Retaining Plate	실 가리개	1	
E-5	DSC-BJ000200	A-7, B-7	Screw(11/64"n=40)	톱커버 힌지 고정나사(11/64"n=40)	1	
E-6	DWS-AA001100	A-7, B-7	Washer	뒷뚜껑 씌 와셔	1	
E-7	CTT-NA000600	A-7	Rotary Mes	회전 메스	1	
E-8	CTT-NA001000	B-7	Rotary Mes	회전 메스	1	
E-9	DSC-BB001400	A-7, B-7	Screw(11/64"n=40)	접시머리 보울트(11/64"n=40)	2	
E-10	CTT-BF000100	A-7, B-7	Thread Trimming Holder	사절홀더	1	
E-11	PSR-AA000100	A-7, B-7	Stop-Ring For E-11	스냅링(15D)	1	
E-12	DWS-AA005100	A-7, B-7	Washer	사절홀더 와셔	1	
E-13	PBR-BA001200	A-7, B-7	Needle Bearing	니들 베어링	1	
E-14	CTT-CA000400	A-7, B-7	Thread Trimming Lever Connecting Link	사절레버 연결링크	1	
E-15	DSC-FA005600	A-7, B-7	Stud Screw	사절레버 연결링크 단나사	2	
E-16	DSN-AA000900	A-7, B-7	Nut(11/64"n=40)	스프링 걸이 축 나사 너트(11/64"n=40)	1	
E-17	CTT-CB000600	A-7, B-7	Thread Trimming Lever	사절레버	1	
E-18	PSC-AC000600	A-7, B-7	Screw(M6)	싱크로 베이스 고정볼트(M6)	1	
E-19	CTT-KF000200	A-7, B-7	Thread Trimming Shaft	사절축	1	
E-20	DWS-AA005200	A-7, B-7	Washer	사절축 와셔	1	
E-21	PSR-AC000100	A-7, B-7	E-Ring(Ø9)	제어체 축링(E링 Ø9)	1	
E-22	DCL-BA000600	A-7, B-7	Return Spring Guide Bushing	리턴 스프링 가이드 붓싱	1	
E-23	DSP-AA002500	A-7, B-7	Slide Arm Return Spring	슬라이드 아암 리턴 스프링	1	
E-24	CTT-CM000501	A-7, B-7	Slide Arm	슬라이드 아암	1	
E-25	CTT-CL000300	A-7, B-7	Roller	로올러	1	
E-26	DSC-GA000400	A-7, B-7	Stud Screw For E-26	로올러 단나사	1	
E-26-1	DWS-CA000100		Washer	가마잡이 와셔	1	
E-27	DSN-AA000600	A-7, B-7	Nut(3/16"n=32)	오프너 너트(3/16"n=32)	1	
E-28	CTT-FB000200	A-7, B-7	Cushion Washer	쿠션 고무(B)	1	
E-29	CTT-CB000700	A-7, B-7	Cam Follower Crank	사절캠 종동 크랭크	1	
E-30	DSC-BJ002000	A-7, B-7	Screw	노루발 상하운동 캠 고정나사	2	
E-31	DSC-BF007200	A-7, B-7	Stopper Screw	스토퍼 쿠션 나사	1	
E-31-1	CTT-FD000200	A-7, B-7	Cushion Rubber	스토퍼 쿠션 고무	1	
E-32	DSN-AA000400	A-7, B-7	Nut(15/64"n=28)	수평운동 릿드 단나사 너트(15/64"n=28)	1	
E-33	DPN-BB001200	A-7, B-7	Stopper Pin	스토퍼 핀	1	
E-34	DSP-AB001000	A-7, B-7	Spring	사절캠 종동 크랭크 스프링	1	
E-35	CTT-BB000800	A-7, B-7	Spring Holder	스프링 걸이	1	
E-36	DSC-BF000600	A-7, B-7	Screw(3/16"n=28)	다이알 판 짐나사(3/16"n=28)	2	
E-37	CTT-DF000101	A-7, B-7	Thread Trimming Cam	사절캠	1	
E-38	DSC-CB000400	A-7, B-7	Screw(1/4"n=40)	육각구멍볼이 멈춤나사(1/4"n=40)	2	
E-39	CTT-CM000600	A-7, B-7	Clutch Lever Ass'y	클러치 레버(組)	1Set	
E-40	DSC-FH000200	A-7, B-7	Stud Screw	클러치 레버 작동핀 나사	1	
E-41	DSN-AA000400	A-7, B-7	Nut(15/64"n=28)	육각너트(15/64"n=28)	1	
E-42	DSC-FD000300	A-7, B-7	Clutch Lever Moving Pin Screw	무릎 올림봉 단나사	1	
E-43	10-028S-257A	A-7, B-7	Stud Screw	솔레노이드 연결 링크 단나사	1	
E-44	DSN-AA000600	A-7, B-7	Nut(3/16"n=32)	오프너 너트(3/16"n=32)	1	
E-45	10-129A-257A	A-7, B-7	Base Plate	베이스 플레이트	1	
E-46	DSC-BF000600	A-7, B-7	Screw(3/16"n=28)	홈볼이 납작 작은나사(3/16"n=28)	3	
E-47	CTT-CA000500	A-7, B-7	Solenoid Connection Link	솔레노이드 연결링크	1	
E-48	DPN-AD003300	A-7, B-7	Solenoid Pin	솔레노이드 핀	1	
E-49	DSC-BF006300	A-7, B-7	Screw(11/64"n=40)	하축 뒷 붓싱 고정나사(11/64"n=40)	1	
E-50	PSR-AC000200	A-7, B-7	E-Ring(Ø5)	E링(Ø5)	1	
E-51	DSD-AA001000	A-7, B-7	Thread Trimming Solenoid Ass'y	사절 솔레노이드(STT-5)	1Set	Sep.23.08
E-52	CTT-BB000700	A-7, B-7	Base	사절 솔레노이드 베이스	1	
E-53	PWS-CA000500	A-7, B-7	Washer	싱크로 베이스 스프링 와셔(Ø6)	2	
E-54	DSC-BF000700	A-7, B-7	Screw(15/64"n=28)	베이스 고정나사B(15/64"n=28)	2	
E-55	CTT-BH000101	A-7, B-7	Bobbin Catcher	보빈 압력봉	1	

NOTE:

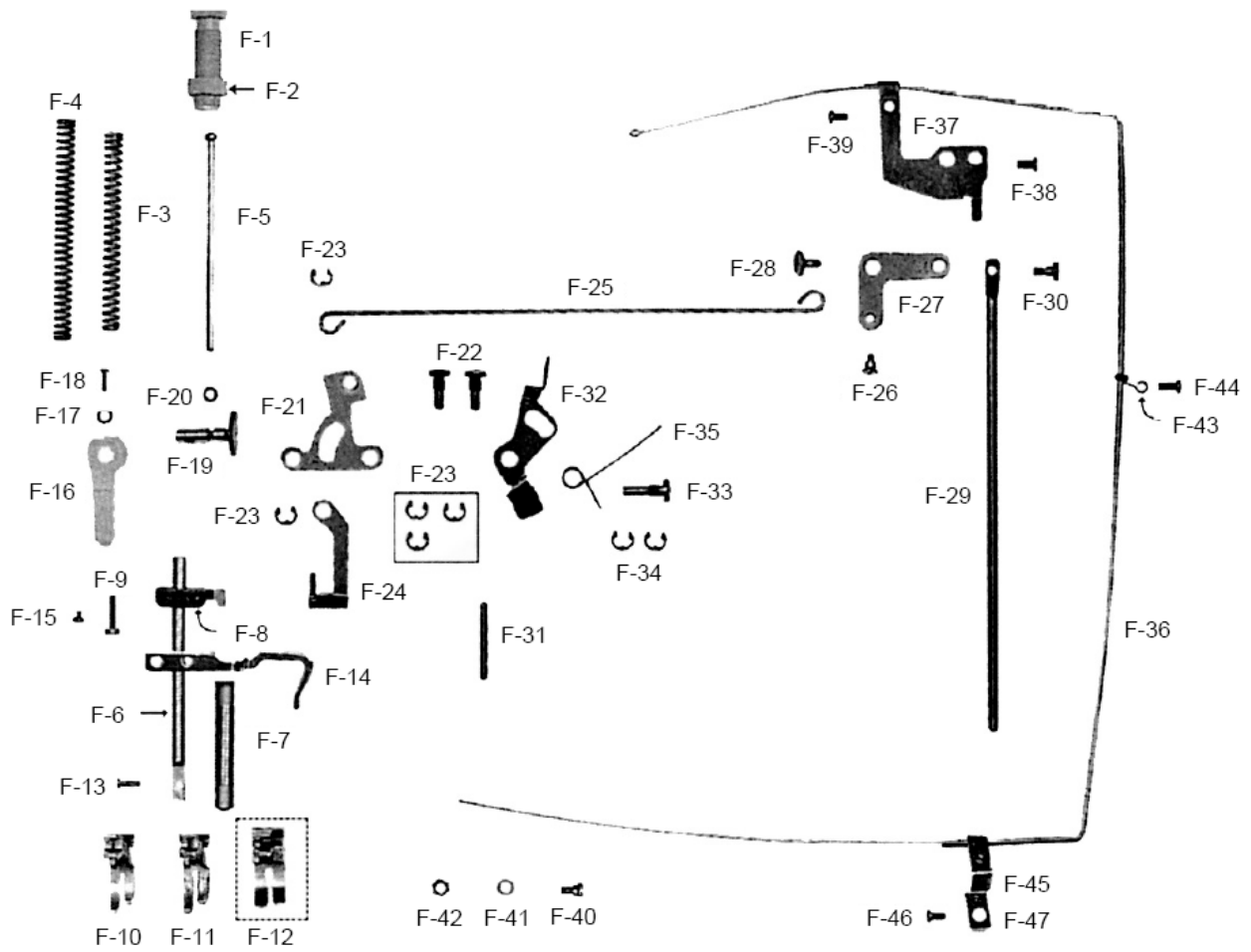
A-7-KM-250A-7S
 B-7-KM-250B-7S
 A-KM-250A
 B-KM-250B
 =Common Part



F

Presser Foot & Tension Release Mechanism

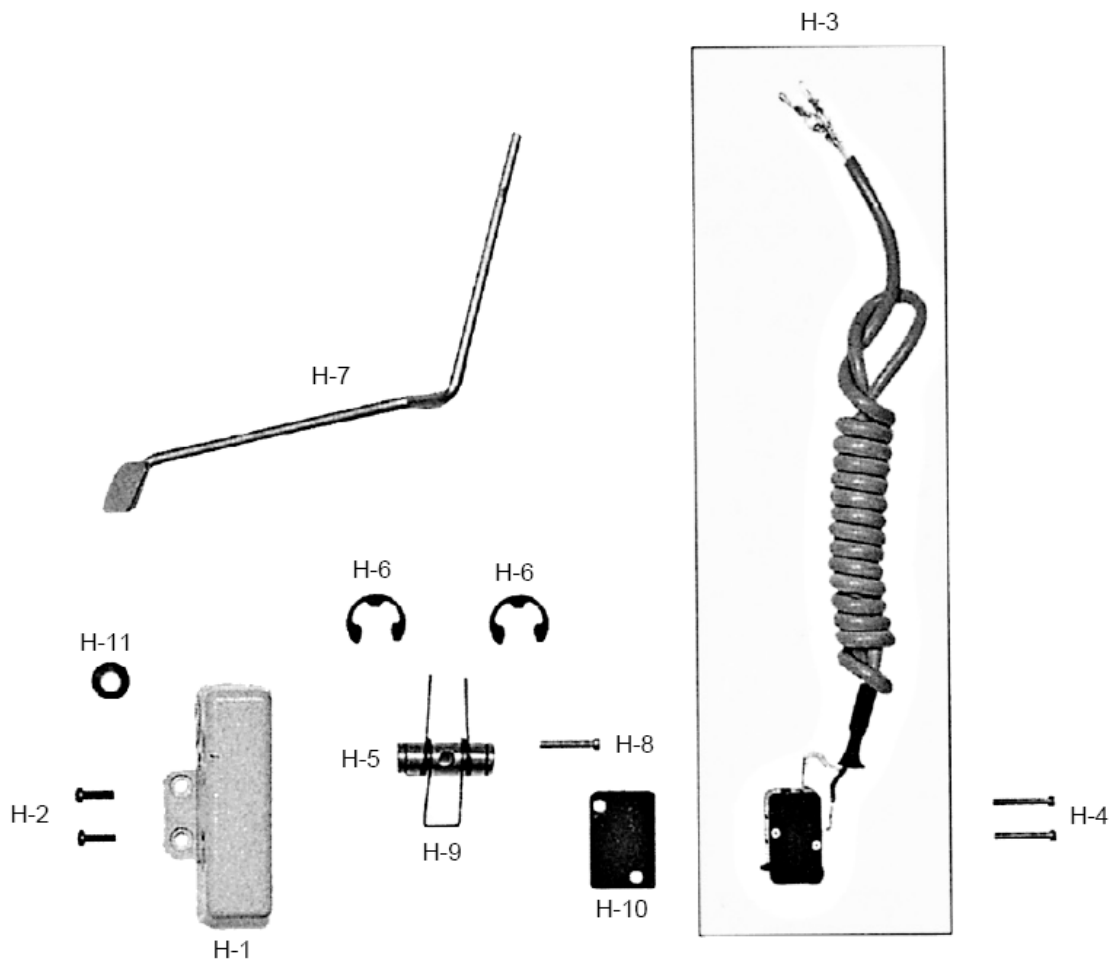
노루발 & 실 늦추기 관계

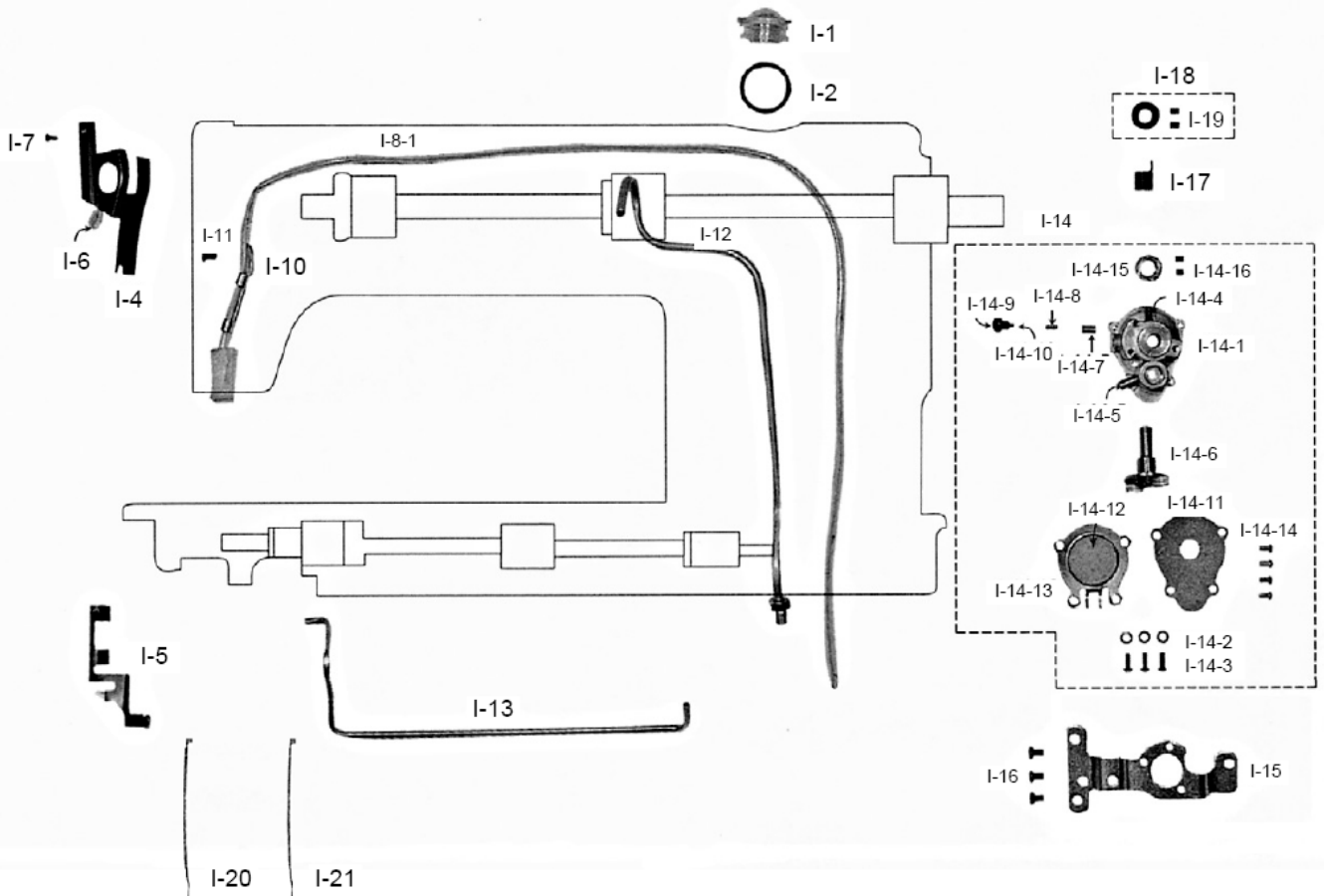




Reverse Button Mechanism

역진 버튼 관계

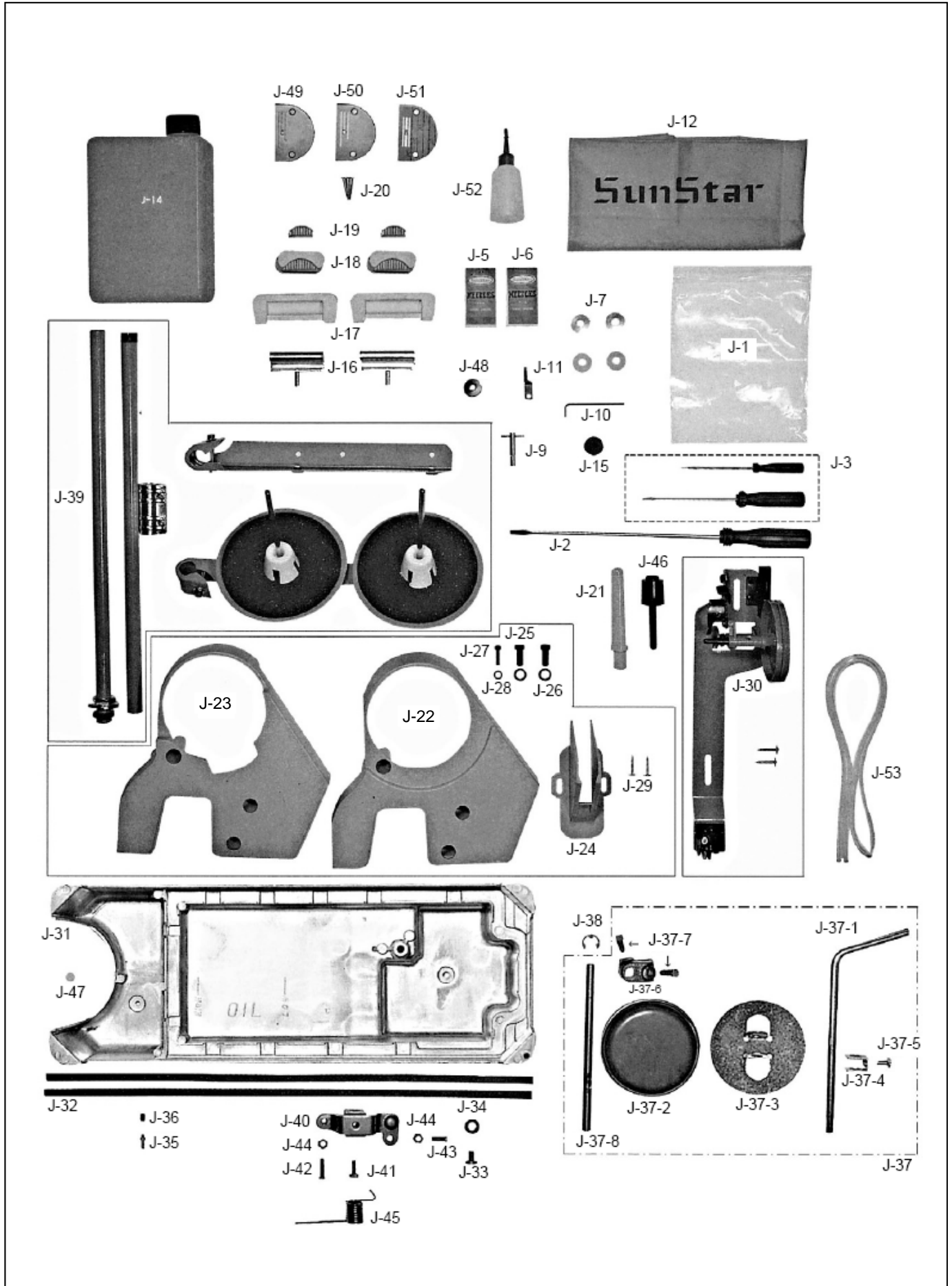




J

Accessories Mechanism

액세서리 관계



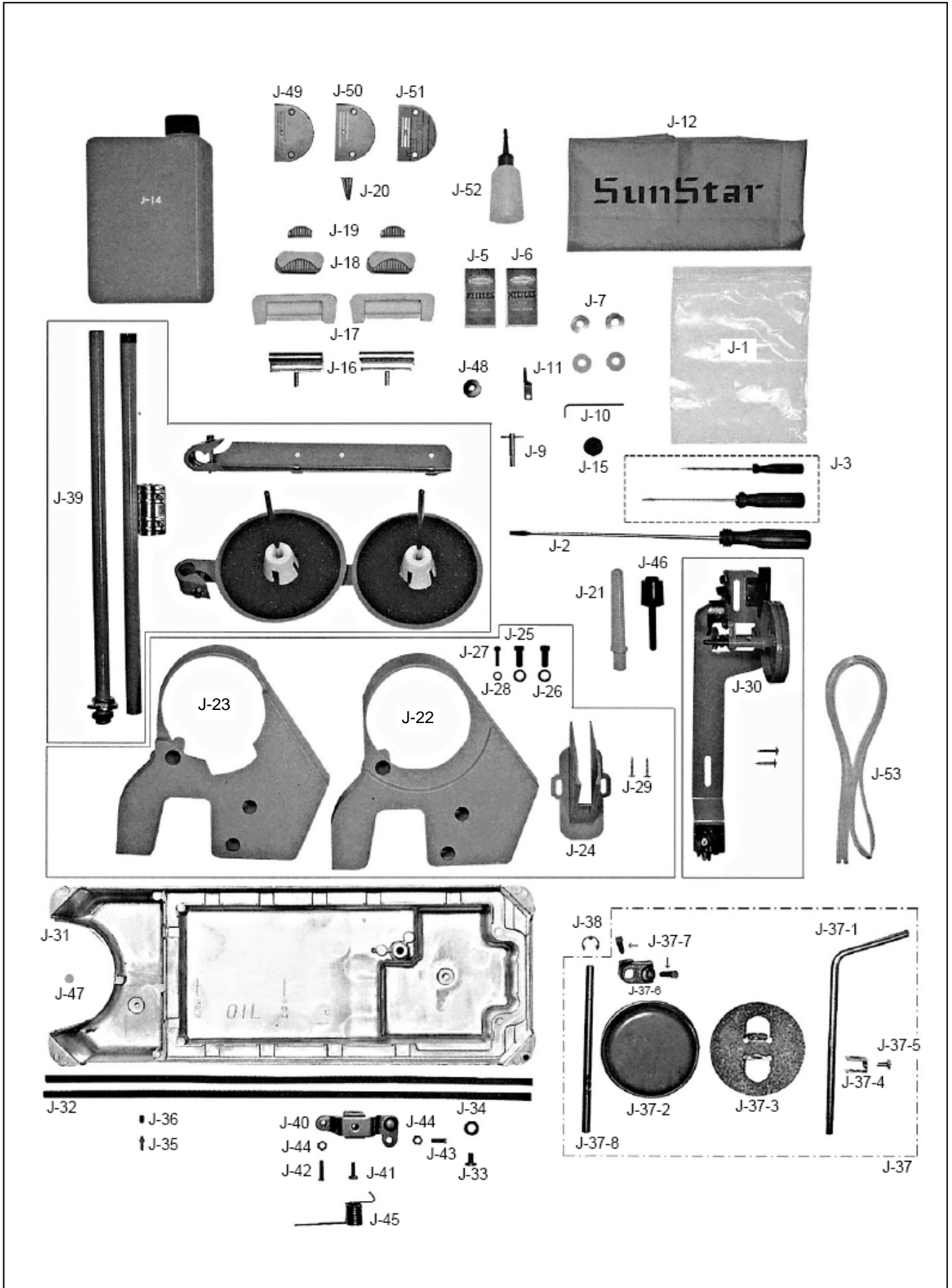
Ref. No.	Parts No.	Note	Name of Parts	품 명	Q'ty	Applied Period
J-1	CAC-MH000100		Accessory Bag	약세사리 박스	1	
J-2	PTL-BA000100		Driver(Large)	드라이버(大)	1	
J-3	PTL-BA000200		Driver(Middle, Small)	드라이버(中,小)	1	
J-5	-		Needle(A-Type)	바늘(A형)	5	
J-6	-		Needle(B-Type)	바늘(B형)	5	
J-7	CHK-HB000600		Bobbin(AL)	보빈	4	
J-9	DTL-CC000100	A-7,B-7	Spanner	고정메스 장력 조절용 스패너	1	
J-10	PTL-AB000100	A-7,B-7	L Wrench(2mm)	L 렌치(2mm)	1	
J-11	CTT-NB001100	A-7,B-7	Fixed Mes	고정메스(극진사용)	1	
J-12	CAC-MA000500	A-7,B-7	Head Cover	미싱커버(대)	1	
J-14	CAC-JB000400		Oil Tank	오일 캔	1	
J-15	DTC-AK000300		Magnetic	자석	1	
J-16	CST-BB002500		Head Hinge	힌지	2	
J-17	CST-FF000400		Rubber Cushion For Hinge	힌지 고무(대)	2	
J-18	CST-FD001100		Head Support Rubber "A"	힌지 고무(중)	2	
J-19	CST-FD001200		Head Support Rubber "B"	힌지 고무(소)	2	
J-20	-		Nail	못	4	
J-21	CST-CR000100		Head Rest	미싱 받침대	1	
J-22	CMB-LA006100	A-7,B-7	Belt Cove "A"	벨트 커버 A(SERVO)	1	
J-23	CMB-LA020000	7N	Belt Cove "A"(FOR NP MOTOR)	벨트 커버 A(NP)	1	
J-24	CMB-LA006200		Belt Cove "B"	벨트 커버 "B"	1	
J-25	DSC-BJ005600		Screw(5/16"n=24)	포스트 고정나사(5/16"n=24)	2	
J-26	DWS-AA002900		Washer	새들 짐나사 와셔	2	
J-27	SC-0184-4118		Screw(3/16"n=28)	홈볼이 냄비 작은나사(3/16"n=28)	1	
J-28	DWS-AA000600		Washer	스토퍼 짐와셔	1	
J-29	PSC-DD000100		Nail	목나사	2	
J-30	AAC-PS000102		Bobbin Winder Ass'y	실감기(조)	1Set	May.04.11
J-31	CST-JA000800		Oil Pan	오일팬	1	
J-32	CAC-MG000300		Oil Pan Gasket	오일팬 가스켓	2Set	
J-33	DSC-BF006100		Screw(M8×1.25)	배유 구멍 마개 나사(M8×1.25)	1	
J-34	CST-FB000200		Packing	배유 구멍 마개 나사 오링	1	
J-35	CLB-JP002500		Oil Pan Nipple	오일팬 니플	1	
J-36	SC-0509-1230		Screw(15/64"n=28)	피이드 캠 고정나사	1	
J-37	43-101A-1600		Knee Lifter Ass'y	무릎 받침(조)	1Set	
J-37-1	CST-KC001300		Knee Lifter Shaft	무릎 받침축	1	
J-37-2	CST-FZ000100		Knee Lifter Pad	무릎 받침 고무	1	
J-37-3	CST-BJ000401		Knee Lifter Pad Insert Plate	무릎 받침 고무잡이판	1	Feb.21.09
J-37-4	CST-CA000200		Holder	무릎 받침 고무 연결 링크	1	
J-37-5	DSC-AA002700		Set Screw	무릎 받침 연결링크 짐나사	1	
J-37-6	CST-CB000300		Knee Lifter Arm Joint Complete	무릎 받침 연결 크랭크	1	
J-37-7	DSC-CC000100		Screw(5/16"n=18)	무릎 받침 축 고정나사(5/16"n=18)	2	
J-37-8	CST-KC001200		Shaft For J-40	제어체 축	1	
J-38	PSR-AC000100		E-Ring(Ø9)	제어체 축 링(E링 Ø9)	1	
J-39	CST-MF000400		Thread Stand Ass'y	실패꽃이(조)	1Set	
J-40	CST-BB002900		Knee Lifting Controller	제어체	1	
J-41	DSC-AA000300		Screw(15/64"n=28)	포크 짐나사(육각)(15/64"n=28)	1	
J-42	DSC-BA002700		Screw(15/64"n=28)	제어체 운동조절나사(중)(15/64"n=28)	1	
J-43	DSC-BA002800		Screw(15/64"n=28)	제어체 운동조절나사(대)(15/64"n=28)	1	
J-44	DSN-AA000400		Nut(15/64"n=28)	수평운동 조절 축 너트(15/64"n=28)	2	
J-45	DSP-AC005600		Spring	제어체 스프링	1	
J-46	CST-CR000500		Knee Base Rubber	무릎 올림봉 받침 캡	1	
J-47	DPK-CB000800	7N	Rubber Cap	바늘대 상 붓싱 마개(흰색)40	1	
J-48	DPK-DC000300		Packing	오일팬 누유방지 고무	1	
J-49	CGA-GA000201	A,A-7	Needle Plate(A-Type)	침판(A형)	1	Jun.18.12
J-50	CGA-GA002001	B,B-7	Needle Plate(B-Type)	침판(B형)	1	Jun.18.12
J-51	CGA-GA001200	BH	Needle Plate(BH-Type)	침판(BH형)	1	
J-52	CAC-JB000100		Oil Tank	유차	1	

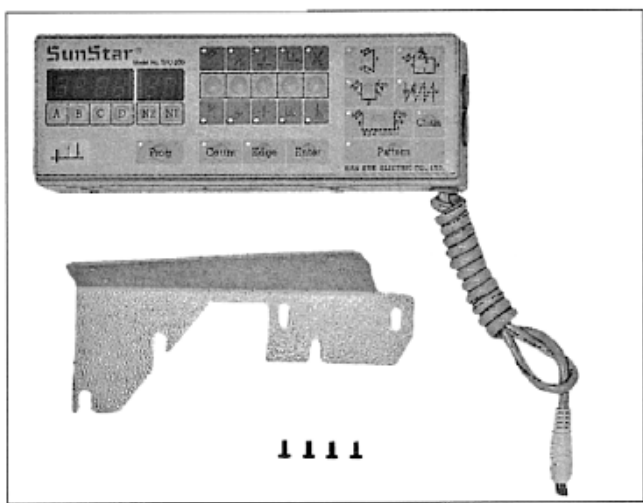
NOTE:
A-7-KM-250A-7S
B-7-KM-250B-7S
A-KM-250A
B-KM-250B
=Common Part

J

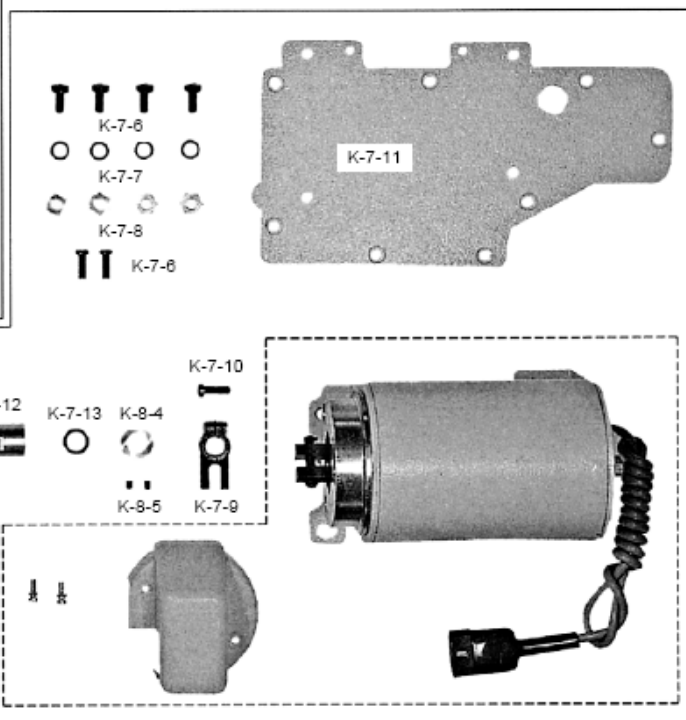
Accessories Mechanism

액세서리 관계





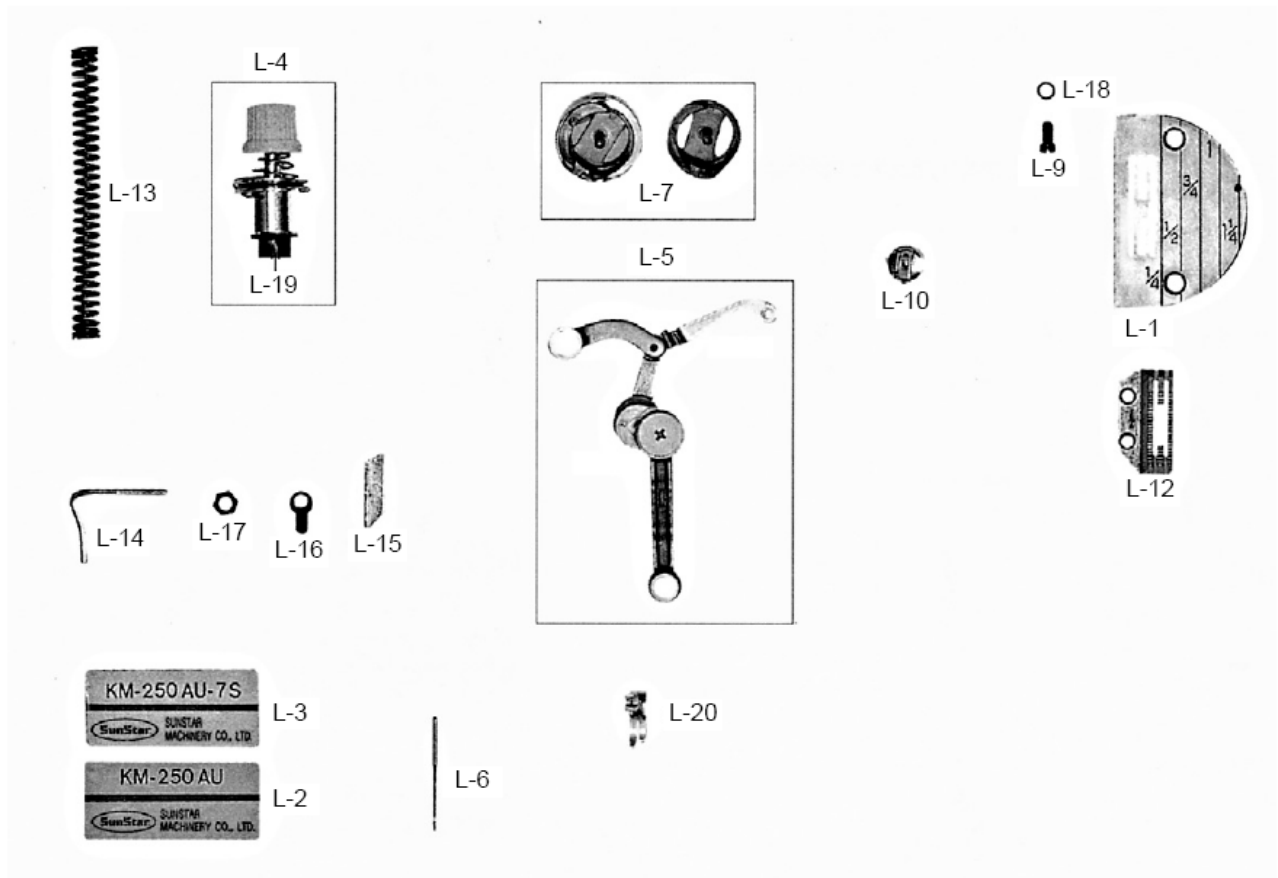
K-7





Special Parts for KM-250AU Series Mechanism

KM-250AU 시리즈 전용 부품 관계



M

Special Parts for KM-250AU-7N, KM-250A-7N, KM-250B-7N Mechanism

KM-250AU-7N, KM-250A-7N, KM-250B-7N 전용 부품 관계



M-1



M-2



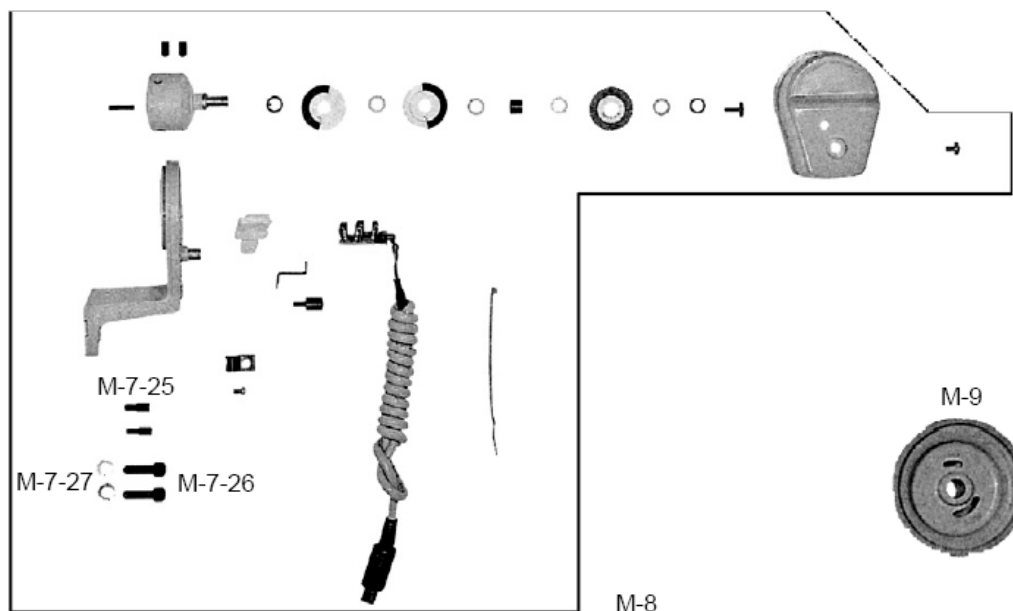
M-3



M-6



M-4



M-7-25

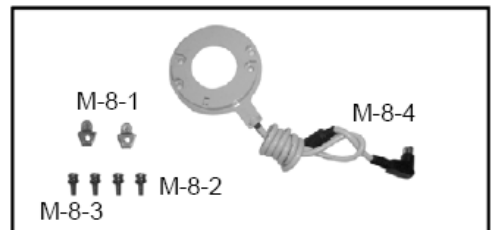
M-7-27

M-7-26

M-9

M-10

M-8



M-8-1

M-8-4

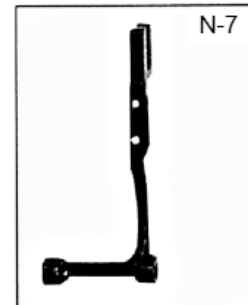
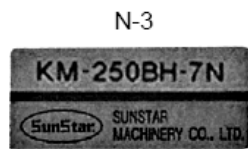
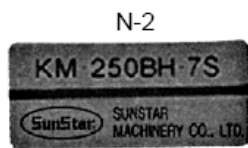
M-8-2

M-8-3

N

Special Parts For KM-250BH Series Mechanism

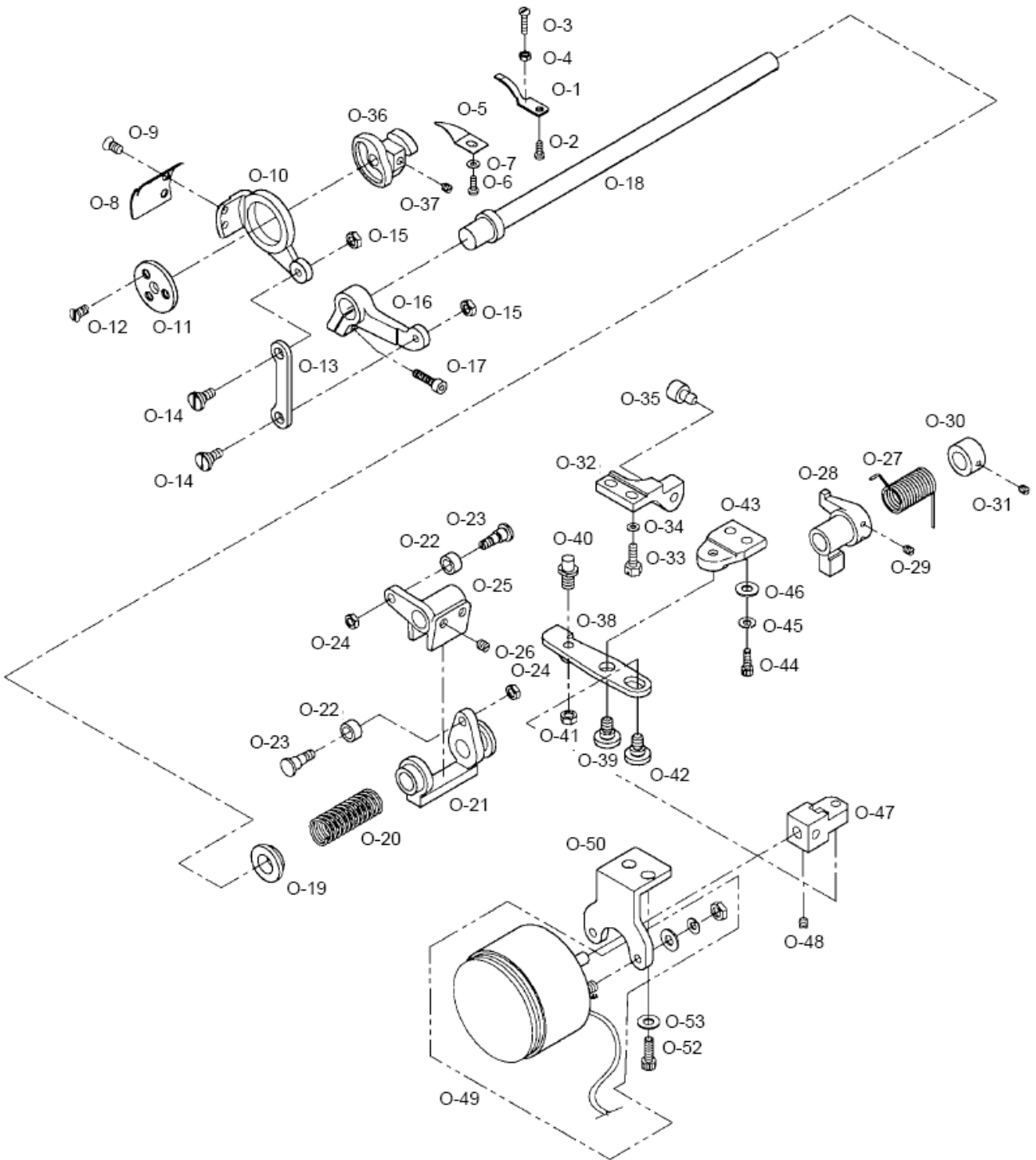
KM-250BH 시리즈 전용 부품 관계





Special Parts for KM-250BL Series Mechanism

KM-250BL 시리즈 전용 부품 관계



Ref. No.	Parts No.	Note	Name of Parts	품 명	Q'ty	Applied Period
O-1	10-101A-64L7		Fixed Mes	고정메스	1	
O-2	DSC-BB002000		Screw(9/64"n=40)	고정메스 고정나사(9/64"n=40)	1	
O-3	DSC-BF006200		Screw(1/8"n=40)	고정메스장력 조절나사(1/8"n=40)	1	
O-4	DSN-AA001700		Nut(1/8"n=40)	고정메스 장력조절나사 너트(1/8"n=40)	1	
O-5	CTT-BJ004200		Thread Retaining Plate	실가리개	1	
O-6	DSC-BJ000200		Screw(11/64"n=40)	톱커버 힌지 고정나사(11/64"n=40)	1	
O-7	DWS-AA003800		Washer	실가리개 고정와셔	1	
O-8	CTT-NA001300		Rotary Mes	회전메스	1	
O-9	DSC-BB001400		Screw(11/64"n=40)	회전메스 고정나사(11/64"n=40)	2	
O-10	CTT-BF001400		Thread Trimming Holder	사절홀더	1	
O-11	10-011C-64L7		Thread Trimming Holder Cover	사절홀더 커버	1	
O-12	DSC-BB002000		Screw(9/64"n=40)	사절홀더 커버 고정나사(9/64"n=40)	3	
O-13	10-013C-64L7		Thread Trimming Lever Connecting Link	사절레버 연결링크	1	
O-14	DSC-FA016400		Stud Screw	사절레버 연결링크 단나사(3/16"n=32)	2	
O-15	DSN-AA000600		Nut For	오프너 너트(3/16"n=32)	2	
O-16	DBS-DB005900		Thread Trimming Lever	사절레버	1	
O-17	PSC-AC001200		Screw	역진 솔레노이드 브라켓 칩나사(M6×P1)	1	
O-18	CTT-KF000600		Thread Trimming Shaft	사절축	1	
O-19	10-021C-64L7		Guide Bush For Return Spring	리턴 스프링 가이드 붓싱	1	
O-20	DSP-AA008500		Slide Arm Return Spring	슬라이드 암 리턴 스프링	1	
O-21	CTT-CM002500		Slide Arm	슬라이드 암	1	
O-22	CTT-CL000300		Roller	사절캠 롤러	2	
O-23	DSC-GA000400		Stud Screw	사절캠 롤러 단나사	2	
O-24	DSN-AA000600		Nut(3/16"n=32)	오프너 너트(3/16"n=32)	2	
O-25	CTT-BF001300		Cam Follower Crank	사절캠 종동 크랭크	1	
O-26	DSC-BJ000500		Screw(15/64"n=28)	피이드 조절 크랭크 칩나사(15/64"n=28)	2	
O-27	DSP-AC005300		Return Spring	사절축 리턴 스프링	1	
O-28	CTT-CM002400		Stopper Lever	스토퍼 레버	1	
O-29	DSC-CB000500		Screw(15/64"n=28)	캠 접축 안내 고정나사(15/64"n=28)	2	
O-30	DCL-AA002800		Collar	사절축 카라	1	
O-31	DSC-CB000400		Screw(1/4"n=40)	사절 캠 고정나사(1/4"n=40)	2	
O-32	CTT-BB002900		Stopper	스토퍼	1	
O-33	DSC-AA003000		Screw(3/16"n=32)	스토퍼 칩나사(3/16"n=32)	2	
O-34	DWS-AA000600		Washer	스토퍼 칩나사 와셔	2	
O-35	CTT-FD000300		Stopper Lever Cushion Rubber	스토퍼 레버 쿠션고무	1	
O-36	CTT-DF000400		Mes Cam	사절캠	1	
O-37	DSC-CB000400		Screw(1/4"n=40)	사절캠 칩나사(1/4"n=40)	2	
O-38	10-038A-25BL		Clutch Lever	클러치 레버	1	
O-39	DSC-FD000300		Stud Screw	클러치 레버 단나사(15/64"n=28)	1	
O-40	DSC-FG001400		Stud Screw	클러치 레버 작동 핀나사(15/64"n=28)	1	
O-41	DSN-AA000400		Nut(15/64"n=28)	수평운동 톱트 단나사 너트	1	
O-42	DSC-FD000300		Stud Screw	솔레노이드 연결링크 단나사(15/64"n=28)	1	
O-43	10-044A-25BL		Base Plate	베이스 플레이트	1	
O-44	SC-0485-4113		Screw(M5×P0.8)	스토퍼 칩나사(M5×P0.8)	2	
O-45	DWS-CA000100		Spring Washer	가마잡이 와셔(Ø5)	2	
O-46	DWS-AA000600		Washer	스토퍼 칩와셔(Ø5)	2	
O-47	10-048A-25BL		Solenoid Connecting Link	솔레노이드 연결링크	1	
O-48	DSC-CB000700		Screw(M5×P0.8)	캠 접축 카라 고정나사	2	
O-49	10-144A-2507		Thread Trimming Solenoid Ass'y	사절 솔레노이드(組)	1(Set)	
O-50	10-151A-25BL		Base	사절 솔레노이드 베이스	1	
O-52	PSC-AC001200		Screw(M6×P1)	역진 솔레노이드 브라켓 칩나사(M6×P1)	2	
O-53	PWS-AA000600		Washer	힌지식 와셔	2	

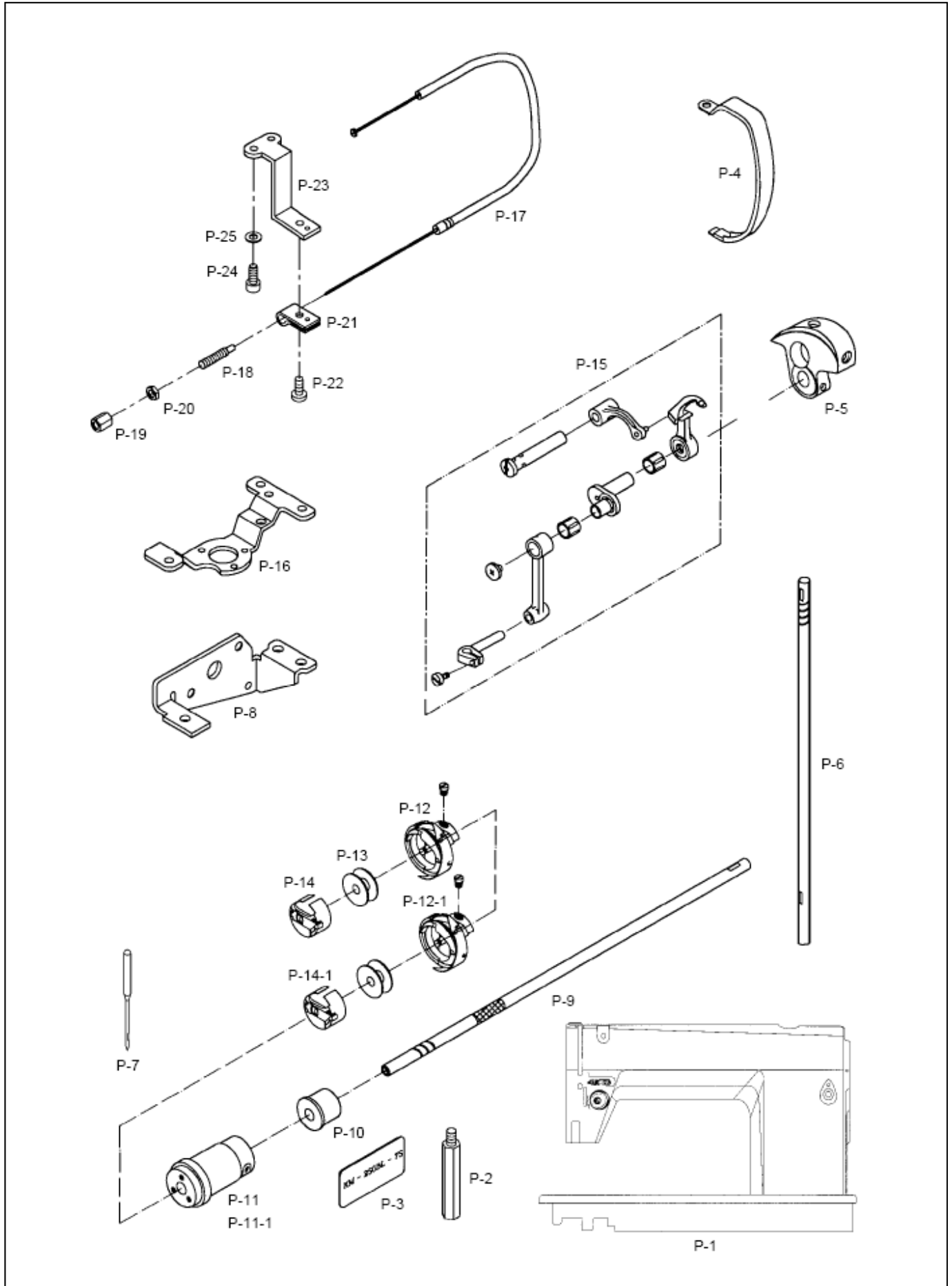
NOTE:

A-7-KM-250A-7S
 B-7-KM-250B-7S
 A-KM-250A
 B-KM-250B
 =Common Part

P

Special Parts for KM-250BL Series Mechanism

KM-250BL 시리즈 전용 부품 관계



Index

Parts No.	Name of Parts	Page	Ref.No.	Parts No.	Name of Parts	Page	Ref.No.	Parts No.	Name of Parts	Page	Ref.No.
006-007-0005	Needle	47	P-7	11-022W-2500	Washer	41	M-8-2	CFA-KJ0001	Feed Regulator Dial Shaft	17	D-91
01-001A-250A	Arm. Bed Ass'y	7	A-1	01-135A-235A	Needle Plate(AU-Type)	39	L-1	CGA-GA0002	Needle Plate(A-TYPE)	7	A-31
01-001A-250B	Arm. Bed Ass'y	7	A-2	12-0000-4701	Synchronizer -N.P	41	M-10	CGA-GA0002	Needle Plate(A-Type)	33	J-49
01-001A-257A	Arm. Bed Ass'y	7	A-3	12-010A-5607	Reverse Button Cable Bushing	29	H-11	CGA-GA0012	Needle Plate(BH-TYPE)	7	A-33
01-001A-257B	Arm. Bed Ass'y	7	A-4	12-016M-2350	Earth Line	7	A-29	CGA-GA0012	Needle Plate(BH-Type)	33	J-51
01-001A-25BL	Arm. Bed Ass'y	7	A-4-1	12-131A-5607	Reverse Button S/W Ass'y	29	H-3	CGA-GA0020	Needle Plate(B-TYPE)	7	A-32
01-001A-25BL	Arm Bed	47	P-1	13-0000-SE55	Synchronizer Ass'y (Servo)	11	B-51-4	CGA-GA0020	Needle Plate(B-Type)	33	J-50
01-001A-2BLS	Arm. Bed Ass'y	7	A-4-2	13-0000-SE55	Synchronizer Ass'y (Servo)	41	M-8-4	CGA-GA0032	Needle Plate	9	A-62
01-037R-1230	Rubber Cap	17	D-65	40-001A-25BL	Tension Release Cable Ass'y	47	P-17	CGA-GB0005	Feed Dog(A-TYPE)	15	D-44
01-045M-250B	Model Mark(KM-250B)	7	A-39	40-003A-2700	Connecting Bolt	47	P-18	CGA-GB0012	Feed Dog(BH-TYPE)(Magrin)	15	D-46
01-136S-1230	Screw(11/64"n=40)	7	A-37	40-104A-257U	Thread Tension Control Ass'y	39	L-4	CGA-GB0015	Feed Dog(B-TYPE)	15	D-45
01-140C-2500	Back Cover	7	A-12	40-210A-257A	Tension Release Cable Holder(Ø5)	25	F-47	CGA-GB0176	Feed Dog(AU-Type)	39	L-12
01-142M-2500	Gasket	7	A-13-1	40-211A-257A	Tension Release Cable Holder(L)(Ø5)	25	F-45	CGA-GB0177	Feed Dog	19	D-126
01-227A-1230	Thread Guide With Three Holes	9	A-59	43-013A-257A	Knee Lifter Connection Crank	37	K-7-9	CGA-GC0007	Presser Foot Ass'y(A-TYPE)	25	F-10
01-45NP-257A	Model Mark(KM-250A-7N)	41	M-2	43-014A-257A	Back Cover For Knee Lifter	37	K-7-11	CGA-GC0007	Presser Foot	39	L-20
01-45NP-257B	Model Mark(KM-250B-7N)	41	M-3	43-101A-1600	Knee Lifter Ass'y	33	J-37	CHK-HA0007	Rotary Hook Ass'y	13	C-26
01-45NP-257U	Model Mark(KM-250AU-7N)	41	M-1	44-010A-2500	Oil Pump Bracket	31	I-15	CHK-HA0009	Rotary Hook Ass'y	13	C-28
02-102A-250B	Link Cam(B-TYPE)	11	B-8	44-010A-25BL	Oil Pump Bracket	47	P-16	CHK-HA0013	Rotary Hook Ass'y	47	P-12
02-102A-250B	Link Cam	47	P-5	44-120S-1230	Screw(9/64"n=40)	31	I-14-14	CHK-HA0019	Rotary Hook Ass'y	13	C-27
02-102A-250H	Link Cam(BH-Type)	43	N-4	AAC-PS0001	Bobbin Winder Ass'y	33	J-30	CHK-HA0033	Rotary Hook Ass'y	47	P-12-1
03-101A-1230	Upright Shaft	47	P-6	AFA-PS0001	Dial Shaft Locker Ass'y	19	D-124	CHK-HB0006	Bobbin(AL)	13	C-30
05-014C-257U	Presser Adjusting Spring	39	L-13	AFA-PS0006	Reverse Feed Lever Crank Ass'y	17	D-84	CHK-HB0006	Bobbin(AL)	33	J-7
05-115C-257U	Arm Thread Guide Holder Plates	39	L-15	AGA-PS0022	Presser Foot Ass'y(B-TYPE)	25	F-11	CHK-HB0007	Bobbin	47	P-13
05-116W-257U	Washer For Arm Thread Guide	39	L-16	AGA-PS0027	Presser Foot Ass'y(BH-TYPE)	25	F-12	CHK-HC0005	Bobbin Case Assembly	47	P-14-1
06-038A-235A	Feed Lifting Shaft Crank(R): A-TYPE	15	D-60	ALB-PS0008	Upper Shaft Oil Pipe Ass'y	31	I-12	CHK-HC0007	Bobbin Case Ass'y	13	C-32
06-041A-235B	Feed Lifting Shaft Crank(R): B-TYPE	15	D-61	ALB-PS0014	Oil Pump Ass'y	31	I-14	CHK-HC0009	Bobbin Case Assembly	47	P-14
06-101A-250B	Feed Cam B	15	D-3	APM-PS0005	Presser Lifter Link(set)	25	F-21	CHK-HC0014	Bobbin Case Ass'y	39	L-10
06-103A-25BL	Feed Regulator Link	19	D-122	APM-PS0012	Knee Lifter Shaft	37	K-8-1	CHK-HH0004	Inner Bobbin Stopper	13	C-34
06-103A-2BLS	Feed Regulator Link	19	D-123	ARB-PS0001	Reverse Feed Control Lever	29	H-7	CHK-HH0004	Inner Bobbin Stopper	13	C-37
06-117A-1230	Feed Bar Block and Shaft	15	D-48	AS-005578	Screw(9/64"n=40)	7	A-54	CLB-BG0021	Magnetic Holder	31	I-14-13
06-131A-257B	Reverse Feed Solenoid Crank	17	D-103	AS-020404	Magnetic Holder	11	B-51-1	CLB-BG0022	Oil Return Tube Holder	31	I-10
06-190A-25BL	Bracket For Reverse Feed Solenoid	47	P-8	AS-020404	Magnetic Holder	41	M-8-1	CLB-BG0023	Wick Holder	15	D-39
07-003A-257U	Oil-Less Rotary Hook Ass'y(For Thread Trimmet)	39	L-7	ATA-PS0012	Sub Upper Thread Tension Control Ass'y	7	A-47	CLB-BG0051	Arm Oil Shield	31	I-5
07-005S-250U	Oil Protection Screw For Lower Shaft	39	L-9	ATA-PS0013	Thread Tension Control Ass'y	9	A-55	CLB-BG0053	Stopper For Wick	15	D-55
07-007A-123B	Rotary Hook Ass'y	13	C-29	ATA-PS0054	Thread Tension Control Ass'y	9	A-56-1	CLB-BH0004	Tension Release Cable Holder(M)	25	F-43
07-009A-25BL	Lower Shaft Bushing(M)	47	P-10	ATR-PS0001	Tension Release Cable Ass'y	25	F-36	CLB-BJ0004	Arm Oil Shield	31	I-4
07-101A-25BL	Lower Shaft	47	P-9	AWP-PS0002	Wiper Crank Ass'y	27	G-8	CLB-BR0001	Impeller	31	I-14-6
07-110A-25BL	Lower Shaft Bushing(F)	47	P-11	AWP-PS0003	Wiper Driving Link Ass'y	27	G-15	CLB-CN0002	Piston	31	I-14-7
07-110A-2BLS	Lower Shaft Bushing(F)	47	P-11-1	AWP-PS0008	Wiper Bracket Ass'y	27	G-1	CLB-FZ0001	Oil Cover	15	D-34
08-001S-1230	Screw(15/64"n=28)	9	A-57	CAC-JB0001	Oil Tank	33	J-52	CLB-FZ0010	Oil Protection Rubber	11	B-36
08-101A-25BH	Thread Take-Up Lever Ass'y	43	N-5	CAC-JB0004	Oil Tank	33	J-14	CLB-JC0002	Oil Pump Body	31	I-14-1
08-102A-123B	Thread Take Up Lever Ass'y(B-Type)	11	B-28	CAC-MA0005	Head Cover	33	J-12	CLB-JD0003	Oil Wick	31	I-6
08-102A-146L	Thread Take Up Lever Ass'y(B-Type:Option)	11	B-29	CAC-MG0003	Oil Pan Gasket	33	J-32	CLB-JF0005	Oil Pipe For Lower Shaft	31	I-13
08-102A-146L	Thread Take up Lever Assembly	47	P-15	CAC-MH0001	Accessory Bag	33	J-1	CLB-JG0003	Oil Return Tube	31	I-8-1
08-201A-250A	Thread Take Up Lever Ass'y(A-Type)	11	B-27	CFA-BB0002	Bracket For Reverse Feed Solenoid	17	D-99	CLB-JG0003	Oil Return Tube	35	J-53
08-201A-257U	Thread Take-Up Lever Ass'y	39	L-5	CFA-BJ0003	B/T Spring Holder	17	D-77	CLB-JJ0004	Oil Gauge Window	31	I-1
10-011C-64L7	Thread Trimming Holder Cover	45	O-11	CFA-CA0003	Feed Regulator Link	15	D-9	CLB-JL0016	Upper Shaft Felter	11	B-5
10-013C-64L7	Thread Trimming Lever Connecting Link	45	O-13	CFA-CA0013	Feed Regulator Link	15	D-10	CLB-JL0024	Lower Shaft Felt	13	C-12
10-021C-64L7	Guide Bush For Return Spring	45	O-19	CFA-CB0003	Reverse Feed Lever Crank Ass'y	17	D-83	CLB-JM0004	Oil Pump Cap	31	I-14-12
10-028S-257A	Stud Screw	21	E-43	CFA-CC0002	Connecting Rod For Feed Regulator	17	D-75	CLB-JP0005	Nipple For Oil Return Pipe	31	I-14-4
10-038A-25BL	Clutch Lever	45	O-38	CFA-CC0003	Reverse Solenoid Connecting Rod	17	D-107	CLB-JP0006	Oil Nipple For Lower Shaft	31	I-14-5
10-044A-25BL	Base Plate	45	O-43	CFA-CC0009	Feed Regulator Rod	17	D-75-1	CLB-JP0025	Oil Pan Nipple	33	J-35
10-048A-25BL	Solenoid Connecting Link	45	O-47	CFA-CM0002	Feed Regulator Lever	17	D-112	CLB-LB0001	Cover For Oil Pump	31	I-14-11
10-101A-64L7	Fixed Mes	45	O-1	CFA-CQ0001	Feed Regulator Control Plate(INSERT)	19	D-120	CLF-CA0002	Feed Connection Link(A)	15	D-13
10-129A-257A	Base Plate	21	E-45	CFA-CQ0013	Feed Regulator Control Plate(7mm)	17	D-94	CLF-CA0003	Feed Connection Link(B)	15	D-14
10-144A-2507	Thread Trimming Solenoid Ass'y	45	O-49	CFA-CQ0022	Feed Regulator Control Plate(4mm)	17	D-93	CLF-CB0005	Feed Lifting Shaft Crank(F)	15	D-51
10-151A-25BL	Base	45	O-50	CFA-CQ0040	Feed Regulator Control Plate(INSERT)	19	D-121	CLF-CB0007	Feed Bar Crank	15	D-35
11-018M-2350	Solenoid Terminal(12P)	19	D-118	CFA-DF0001	Feed Regulator	17	D-69	CLF-CB0008	Level Feed Crank(R)	15	D-26
11-019M-2350	Terminal Tube(L)	17	D-117	CFA-DF0008	Feed Regulator	17	D-70	CLF-CC0001	Feed Rocker Shaft Connecting Rod	15	D-7
11-021S-2500	Screw	11	B-51-3	CFA-FZ0001	Stopper Rubber	17	D-115	CLF-CC0002	Crank Rod	15	D-8
11-021S-2500	Screw	41	M-8-3	CFA-KF0001	Reverse Feed Control Lever Shaft	17	D-81	CLF-DC0001	Feed Cam A	15	D-1
11-022W-2500	Washer	11	B-51-2	CFA-KF0003	Feed Adjusting Shaft	17	D-74	CLF-DC0002	Feed Cam C	15	D-5

Index

Parts No.	Name of Parts	Page	Ref.No.	Parts No.	Name of Parts	Page	Ref.No.	Parts No.	Name of Parts	Page	Ref.No.
CLF-KF0001	Feed Lifting Shaft	15	D-54	CTT-BF0001	Thread Trimming Holder	21	E-10	DBS-DB0059	Thread Trimming Lever	45	O-16
CLF-KF0002	Feed Rock Shaft	15	D-28	CTT-BF0002	Bobbin Catcher Holder	23	E-57	DCL-AA0001	Upper Shaft Collar	11	B-16
CLF-KH0001	Feed bar Shaft	15	D-37	CTT-BF0013	Cam Follower Crank	45	O-25	DCL-AA0015	Collar For Impeller Shaft	31	I-14-15
CLS-KC0007	Lower Shaft	13	C-10	CTT-BF0014	Thread Trimming Holder	45	O-10	DCL-AA0017	Collar For Lower Shaft	13	C-24
CMB-BB0045	Bed Base(R)	7	A-21	CTT-BH0001	Bobbin Catcher	21	E-55	DCL-AA0026	Oil Pump Connection Collar	31	I-18
CMB-BJ0024	Gauge Plate	7	A-36	CTT-BH0002	Bobbin Catcher Lever	23	E-56	DCL-AA0028	Collar	17	D-72
CMB-BJ0066	Machine Number Plate	7	A-42	CTT-BJ0011	Thread Retaining Plate	21	E-4	DCL-AA0028	Collar	45	O-30
CMB-FC0023	Gasket	7	A-6	CTT-BJ0042	Thread Retaining Plate	45	O-5	DCL-AA0050	Collar	37	K-8-4
CMB-FC0024	Gasket	7	A-13	CTT-CA0004	Thread Trimming Lever Connecting Link	21	E-14	DCL-BA0006	Return Spring Guide Bushing	21	E-22
CMB-HK0001	Thread Guide	7	A-53-1	CTT-CA0005	Solenoid Connection Link	21	E-47	DGR-AD0001	Upper Shaft Gear	11	B-18
CMB-HK0001	Thread Guide	43	N-6	CTT-CB0006	Thread Trimming Lever	21	E-17	DGR-AD0002	Upright Shaft Gear(U)	13	C-2
CMB-HK0005	Arm Thread Guide	7	A-51	CTT-CB0007	Cam Follower Crank	21	E-29	DGR-AD0003	Upright Shaft Gear(L)	13	C-8
CMB-HK0019	Thread Guide	7	A-53	CTT-CL0003	Roller	21	E-25	DGR-AD0004	Lower Shaft Gear	13	C-11
CMB-HK0020	Upper Thread Guide Pin and Nut	7	A-45	CTT-CL0003	Roller	45	O-22	DPK-BA0008	O-Ring	39	L-18
CMB-HK0080	Arm Thread Guide(L)	39	L-14	CTT-CM0005	Slide Arm	21	E-24	DPK-CA0006	Bed Rubber Cap	7	A-18
CMB-LA0042	Face Plate	7	A-5	CTT-CM0006	Clutch Lever Ass'y	21	E-39	DPK-CB0002	Face Plate Rubber Cap(S)	7	A-11
CMB-LA0043	Thread Take Up Cover	7	A-8	CTT-CM0024	Stopper Lever	45	O-28	DPK-CB0002	Arm Rubber Cap(L)	7	A-15
CMB-LA0043	Thread Take up Cover	47	P-4	CTT-CM0025	Slide Arm	45	O-21	DPK-CB0004	Arm Rubber Cap(S)	7	A-16
CMB-LA0061	Belt Cove "A"	33	J-22	CTT-DF0001	Thread Trimming Cam	21	E-37	DPK-CB0008	Rubber Cap	33	J-47
CMB-LA0062	Belt Cove "B"	33	J-24	CTT-DF0004	Mes Cam	45	O-36	DPK-CB0009	Face Plate Rubber Cap(L)	7	A-10
CMB-LA0200	Belt Cove "A"(FOR NP MOTOR)	33	J-23	CTT-FB0002	Cushion Washer	21	E-28	DPK-CB0023	Rubber Cap	7	A-17
CMB-LB0044	Slide Plate	7	A-35	CTT-FD0001	Stopper Rubber	23	E-62	DPK-CC0003	Code Bushing	7	A-19
CNB-BH0001	Thread Guide	11	B-44	CTT-FD0002	Cushion Rubber	21	E-31-1	DPK-CZ0002	Cap For Tension Release Pin	9	A-60
CNB-CD0002	Needle Bar Guide Slider Block	11	B-45	CTT-FD0003	Stopper Lever Cushion Rubber	45	O-35	DPK-CZ0002	Cap For Tension Release Pin	39	L-19
CNB-HK0004	Needle Bar Thread Guide(A-TYPE)	11	B-46	CTT-KF0002	Thread Trimming Shaft	21	E-19	DPK-DC0003	Packing	33	J-48
CNB-HK0021	Needle Bar Thread Guide(B-TYPE)	11	B-47	CTT-KF0006	Thread Trimming Shaft	45	O-18	DPL-AA0002	Pulley(Only For Trimming M/C)	41	M-9
CNB-KA0003	Needle Bar(A-TYPE)	11	B-39	CTT-NA0006	Rotary Mes	21	E-7	DPL-AA0002	Pulley(Only For Trimming M/C)	11	B-23
CPB-BF0004	Presser Bar Holder	25	F-8	CTT-NA0010	Rotary Mes	21	E-8	DPL-AA0002	Pulley(Only For Regular M/C)	11	B-23-1
CPB-CM0003	Presser Lifter	25	F-16	CTT-NA0013	Rotary Mes	45	O-8	DPL-AA0013	Pulley	41	M-6
CPB-DF0003	Presser Lifter Cam Shaft	25	F-19	CTT-NB0009	Fixed Mes	23	E-65	DPN-AA0001	Feed Connection Link Pin(A)	15	D-11
CPB-HK0001	Thread Guide Plate	25	F-14	CTT-NB0011	Fixed Mes	21	E-1	DPN-AA0031	Dial Pin	19	D-119
CPB-KB0001	Presser Bar	25	F-6	CTT-NB0011	Fixed Mes	33	J-11	DPN-AA0034	Tension Release Pin	25	F-31
CPB-KC0003	Presser Adjusting Bar	25	F-5	CUR-KC0001	Upright Shaft	13	C-1	DPN-AA0035	Reverse Button Actuator Pin	29	H-5
CPM-BH0003	Presser Lifter Connection Bar	25	F-25	CUS-BJ0002	Protection Plate	11	B-37	DPN-AA0036	Crank Rod Connection Pin	17	D-63
CPM-CB0004	Knee Lifting Link	25	F-27	CUS-CH0001	Oil Adjusting Pin	11	B-2	DPN-AA0039	Feed Connection Link Pin(B)	15	D-19
CPM-CM0009	Presser Lifter Lever	25	F-24	CUS-DA0006	Link Cam(A-TYPE)	11	B-7	DPN-AA0040	Feed Connection Link Pin(C)	15	D-21
CPM-CR0002	Knee Lifting Bar	25	F-29	CUS-KC0005	Upper Shaft	11	B-1	DPN-AA0041	Hinge Pin	15	D-23
CRB-FD0001	Insulated Rubber	29	H-10	CUS-KC0030	Upper Shaft(NP-Type)	41	M-4	DPN-AA0146	Pin	17	D-96
CRB-LC0001	Reverse Button Case	29	H-1	CWP-BB0001	Wiper Base	27	G-23	DPN-AD0033	Solenoid Pin	21	E-48
CST-BB0025	Head Hinge	33	J-16	CWP-BH0002	Wiper	27	G-5	DPN-AD0040	Hinge Pin	17	D-108
CST-BB0029	Knee Lifting Controller	33	J-40	CWP-CA0001	Wiper Solenoid Connection Link	27	G-19	DPN-BB0012	Stopper Pin	21	E-33
CST-BJ0004	Knee Lifter Pad Insert Plate	33	J-37-3	CWP-CA0012	Wiper Rod	27	G-12	DPN-BC0010	Feed Adjusting Link Hinge Pin(A)	15	D-15
CST-CA0002	Holder	33	J-37-4	CWP-KC0002	Wiper Rotation Shaft	27	G-3	DPN-BC0011	Feed Adjusting Link Hinge Pin(B)	15	D-17
CST-CB0003	Knee Lifter Arm Joint Complete	33	J-37-6	CWP-LA0004	Wiper Cover	27	G-25	DSC-AA0003	Screw(15/64"n=28)	33	J-41
CST-CR0001	Head Rest	33	J-21	DBS-DA0030	Upper Shaft Bushing(M)	11	B-14	DSC-AA0010	Screw(3/16"n=28)	15	D-27
CST-CR0005	Knee Base Rubber	33	J-46	DBS-DA0034	Needle Bar Bushing(U)	11	B-41	DSC-AA0010	Screw(3/16"n=28)	15	D-53
CST-FB0002	Packing	33	J-34	DBS-DA0035	Needle Bar Bushing(L)	11	B-42	DSC-AA0010	Screw(3/16"n=28)	17	D-62
CST-FD0011	Head Support Rubber "A"	33	J-18	DBS-DA0037	Upright Shaft Bushing(U)	13	C-5	DSC-AA0027	Set Screw	33	J-37-5
CST-FD0012	Head Support Rubber "B"	33	J-19	DBS-DA0038	Upright Shaft Bushing(L)	13	C-7	DSC-AA0030	Screw(3/16"n=32)	45	O-33
CST-FF0004	Rubber Cushion For Hinge	33	J-17	DBS-DA0039	Lower Shaft Bushing(F)	13	C-19	DSC-AC0057	Bolt (11/64"n=40)	17	D-71
CST-FZ0001	Knee Lifter Pad	33	J-37-2	DBS-DA0040	Lower Shaft Bushing(M)	13	C-18	DSC-BA0001	Screw(9/64"n=40)	7	A-52
CST-JA0008	Oil Pan	33	J-31	DBS-DA0041	Lower Shaft Bushing(R)	13	C-16	DSC-BA0001	Screw(9/64"n=40)	27	G-7
CST-KC0012	Shaft For J-40	33	J-37-8	DBS-DA0042	Presser Bar Bushing	25	F-7	DSC-BA0001	Screw(9/64"n=40)	27	G-26
CST-KC0013	Knee Lifter Shaft	33	J-37-1	DBS-DA0067	Feed Rock Shaft Bushing(F)	15	D-32	DSC-BA0001	Screw(9/64"n=40)	31	I-7
CST-MF0004	Thread Stand Ass'y	33	J-39	DBS-DA0068	Feed Rock Shaft Bushing(R)	15	D-30	DSC-BA0002	Screw(9/64"n=40)	25	F-13
CTR-BB0010	Bracket	47	P-23	DBS-DA0068	Feed Lifting Shaft Bushing(R)	15	D-58	DSC-BA0004	Screw(3/16"n=28)	17	D-85
CTR-BG0001	Tension Release Cable Holder(U)	25	F-37	DBS-DA0071	Feed Lifting Shaft Bushing(F)	15	D-56	DSC-BA0011	Screw(11/64"n=40)	29	H-8
CTR-BG0004	Tension Release Cable Holder(L)	47	P-21	DBS-DA0263	Lower Shaft Bushing(F)	13	C-20	DSC-BA0014	Screw(3/16"n=32)	17	D-113
CTR-BJ0010	Tension Release Plate	25	F-32	DBS-DA0281	Knee Lifter Shaft Bushing	37	K-7-12	DSC-BA0018	Screw(9/64"n=40)	7	A-14-3
CTT-BB0007	Base	21	E-52	DBS-DB0010	Upper Shaft Bushing(Trimming)	11	B-55	DSC-BA0027	Screw(15/64"n=28)	33	J-42
CTT-BB0008	Spring Holder	21	E-35	DBS-DB0011	Upper Shaft Bushing(R)	11	B-21	DSC-BA0028	Screw(15/64"n=28)	33	J-43
CTT-BB0029	Stopper	45	O-32	DBS-DB0012	Upper Shaft Bushing(R)	11	B-21	DSC-BB0014	Screw(11/64"n=40)	21	E-9

Index

Parts No.	Name of Parts	Page	Ref.No.	Parts No.	Name of Parts	Page	Ref.No.	Parts No.	Name of Parts	Page	Ref.No.
DSC-BB0014	Screw(11/64"n=40)	45	O-9	DSC-BJ0055	Screw	29	H-4	DSC-HC0004	Bed Base "Front"(B)	47	P-2
DSC-BB0015	Screw(M5x0.8)	17	D-100	DSC-BJ0056	Screw(5/16"n=24)	33	J-25	DSC-HC0006	Bed Base "FRONT"(B)	9	A-58
DSC-BB0020	Screw(9/64"n=40)	45	O-2	DSC-CA0001	Screw(15/64"n=28)	11	B-15	DSC-HD0006	Holder	17	D-89
DSC-BB0020	Screw(9/64"n=40)	45	O-12	DSC-CA0001	Screw(15/64"n=28)	13	C-21	DSC-HZ0011	Screw(9/32"n=28)	25	F-40
DSC-BC0001	Screw(11/64"n=40)	7	A-34	DSC-CA0001	Screw(15/64"n=28)	15	D-31	DSD-AA0008	Wiper Solenoid Ass'y	27	G-27
DSC-BF0001	Screw(1/8"n=44)	11	B-48	DSC-CA0001	Screw(15/64"n=28)	15	D-33	DSD-AA0010	Thread Trimming Solenoid Ass'y	21	E-51
DSC-BF0001	Screw(1/8"n=44)	23	E-58	DSC-CA0001	Screw(15/64"n=28)	15	D-57	DSD-AA0012	Reverse Feed Solenoid Ass'y	17	D-98-1
DSC-BF0001	Screw(1/8"n=44)	23	E-59	DSC-CA0001	Screw(15/64"n=28)	15	D-59	DSD-AA0030	Reverse Feed Solenoid Ass'y	17	D-98
DSC-BF0004	Screw(15/64"n=28)	15	D-42	DSC-CA0004	Screw(11/64"n=40)	31	I-14-16	DSN-AA0004	Nut(15/64"n=28)	21	E-32
DSC-BF0006	Screw(3/16"n=28)	7	A-9	DSC-CA0004	Screw(11/64"n=40)	37	K-8-5	DSN-AA0004	Nut(15/64"n=28)	21	E-41
DSC-BF0006	Screw(3/16"n=28)	7	A-14	DSC-CA0005	Screw(1/4"n=40)	11	B-17	DSN-AA0004	Nut(15/64"n=28)	33	J-44
DSC-BF0006	Screw(3/16"n=28)	7	A-14-2	DSC-CA0005	Screw(1/4"n=40)	11	B-19	DSN-AA0004	Nut(15/64"n=28)	45	O-41
DSC-BF0006	Screw(3/16"n=28)	21	E-36	DSC-CA0005	Screw(1/4"n=40)	11	B-52	DSN-AA0006	Nut(3/16"n=32)	21	E-27
DSC-BF0006	Screw(3/16"n=28)	21	E-46	DSC-CA0005	Screw(1/4"n=40)	13	C-3	DSN-AA0006	Nut(3/16"n=32)	21	E-44
DSC-BF0006	Screw(3/16"n=28)	25	F-44	DSC-CA0005	Screw(1/4"n=40)	13	C-14	DSN-AA0006	Nut For	45	O-15
DSC-BF0006	Screw(3/16"n=28)	27	G-2	DSC-CA0008	Screw(15/64"n=28)	11	B-35	DSN-AA0006	Nut(3/16"n=32)	45	O-24
DSC-BF0006	Screw(3/16"n=28)	27	G-24	DSC-CA0008	Screw(15/64"n=28)	13	C-6	DSN-AA0007	Nut(15/64"n=28)	37	K-7-8
DSC-BF0006	Screw(3/16"n=28)	31	I-11	DSC-CA0008	Screw(1/4"n=40)	13	C-17	DSN-AA0009	Nut(11/64"n=40)	17	D-90
DSC-BF0006	Screw(3/16"n=28)	31	I-16	DSC-CA0008	Screw(15/64"n=28)	17	D-68	DSN-AA0009	Nut(11/64"n=40)	21	E-16
DSC-BF0007	Screw(15/64"n=28)	21	E-54	DSC-CA0011	Screw(1/4"n=40)	11	B-30	DSN-AA0009	Nut(11/64"n=40)	27	G-11
DSC-BF0007	Screw(15/64"n=28)	37	K-7-6	DSC-CA0011	Screw(1/4"n=40)	15	D-6	DSN-AA0009	Nut(11/64"n=40)	27	G-14
DSC-BF0008	Screw(15/64"n=28)	11	B-25	DSC-CA0011	Screw(1/4"n=40)	15	D-16	DSN-AA0009	Nut(3/16"n=32)	27	G-18
DSC-BF0010	Screw(11/64"n=40)	13	C-35	DSC-CA0015	Screw	23	E-64	DSN-AA0009	Nut(11/64"n=40)	27	G-21
DSC-BF0012	Screw(11/64"n=40)	25	F-9	DSC-CA0016	Screw(11/64"n=40)	7	A-48	DSN-AA0017	Nut(1/8"n=40)	21	E-3
DSC-BF0018	Screw(1/8"n=44)	15	D-47	DSC-CA0016	Screw(11/64"n=40)	31	I-19	DSN-AA0017	Nut(1/8"n=40)	45	O-4
DSC-BF0019	Screw(3/16"n=28)	17	D-95	DSC-CA0019	Screw(1/4"n=40)	13	C-9	DSN-AA0020	Nut For Arm Thread Guide	39	L-17
DSC-BF0026	Screw(3/16"n=32)	15	D-36	DSC-CA0019	Screw(1/4"n=40)	15	D-2	DSN-AA0024	Nut (9/32"n=28)	25	F-42
DSC-BF0031	Screw(11/64"n=40)	17	D-86	DSC-CA0019	Screw(1/4"n=40)	17	D-73	DSN-AA0024	Nut A	47	P-19
DSC-BF0036	Screw(11/64"n=40)	15	D-22	DSC-CB0004	Screw(1/4"n=40)	15	D-18	DSN-CC0001	Presser Adjusting Nut	25	F-2
DSC-BF0036	Screw(11/64"n=40)	15	D-25	DSC-CB0004	Screw(1/4"n=40)	21	E-38	DSN-CY0006	Nut For Knee Lifter	37	K-7-14
DSC-BF0036	Screw(11/64"n=40)	17	D-64	DSC-CB0004	Screw(1/4"n=40)	45	O-31	DSP-AA0016	Spring	13	C-23
DSC-BF0036	Screw(11/64"n=40)	17	D-109	DSC-CB0004	Screw(1/4"n=40)	45	O-37	DSP-AA0017	Presser Adjusting Spring(A-TYPE)	25	F-3
DSC-BF0036	Screw(11/64"n=40)	25	F-39	DSC-CB0005	Screw(15/64"n=28)	45	O-29	DSP-AA0025	Slide Arm Return Spring	21	E-23
DSC-BF0036	Screw(11/64"n=40)	25	F-46	DSC-CB0007	Screw(M5xL5)	9	A-61	DSP-AA0027	Piston Spring	31	I-14-8
DSC-BF0037	Screw(9/32"n=28)	11	B-9	DSC-CB0007	Screw(M5xP0.8)	45	O-48	DSP-AA0028	Spring	17	D-97
DSC-BF0040	Screw(3/16"n=32)	13	C-22	DSC-CB0010	Screw(11/64"n=40)	13	C-25	DSP-AA0052	Dial Shaft Eccentric Stopper Spring	19	D-125
DSC-BF0061	Screw(M8x1.25)	33	J-33	DSC-CC0001	Screw(5/16"n=18)	33	J-37-7	DSP-AA0062	Presser Adjusting Spring(B-TYPE)	25	F-4
DSC-BF0062	Screw(1/8"n=40)	21	E-2	DSC-FA0007	Hinge Screw	25	F-30	DSP-AA0085	Slide Arm Return Spring	45	O-20
DSC-BF0062	Screw(1/8"n=40)	45	O-3	DSC-FA0008	Hinge Screw	27	G-10	DSP-AB0010	Spring	21	E-34
DSC-BF0063	Screw(11/64"n=40)	15	D-12	DSC-FA0008	Hinge Screw	27	G-13	DSP-AB0035	Spring	17	D-87
DSC-BF0063	Screw(11/64"n=40)	15	D-20	DSC-FA0008	Hinge	27	G-20	DSP-AB0048	Reverse Feed Spring	17	D-79
DSC-BF0063	Screw(11/64"n=40)	21	E-49	DSC-FA0009	Hinge Screw	27	G-16	DSP-AB0048	Spring	17	D-87-1
DSC-BF0070	Cap Screw For Lower Shaft oil	13	C-13	DSC-FA0056	Stud Screw	21	E-15	DSP-AB0051	Spring	17	D-88
DSC-BF0072	Stopper Screw	21	E-31	DSC-FA0060	Hinge Screw	25	F-28	DSP-AC0002	Wiper Spring	27	G-22
DSC-BF0074	Pin Screw	31	I-14-9	DSC-FA0062	Stopper Stud Screw	17	D-116	DSP-AC0017	Bobbin Catcher Spring	23	E-60
DSC-BF0077	Screw(1/8"n=44)	15	D-40	DSC-FA0063	Stud Screw	17	D-104	DSP-AC0021	Spring For Tension Release Plate	25	F-35
DSC-BF0079	Screw(3/16"n=32)	15	D-50	DSC-FA0164	Stud Screw	45	O-14	DSP-AC0022	Spring	29	H-9
DSC-BF0084	Screw(3/16"n=28)	7	A-7	DSC-FC0001	Stud Screw	25	F-26	DSP-AC0023	Oil Pump Connection Spring	31	I-17
DSC-BF0084	Screw(3/16"n=28)	7	A-14-1	DSC-FD0003	Clutch Lever Moving Pin Screw	21	E-42	DSP-AC0053	Return Spring	45	O-27
DSC-BF0084	Screw(9/64"n=40)	29	H-2	DSC-FD0003	Stud Screw	45	O-39	DSP-AC0056	Spring	33	J-45
DSC-BG0002	Screw(5/16"n=24)	11	B-26	DSC-FD0003	Stud Screw	45	O-42	DSP-BA0023	Thread Tension Adjusting Spring	9	A-56-2
DSC-BH0004	Screw(3/16"n=28)	25	F-38	DSC-FF0026	Guide Pin For Synchronizer	41	M-7-25	DTC-AH0002	Code Holder "A"	7	A-26
DSC-BJ0002	Screw(11/64"n=40)	21	E-5	DSC-FG0014	Stud Screw	45	O-40	DTC-AH0011	Code Holder "B"	7	A-27
DSC-BJ0002	Screw(11/64"n=40)	45	O-6	DSC-FH0002	Stud Screw	21	E-40	DTC-AK0003	Magnetic	33	J-15
DSC-BJ0002	Screw	47	P-22	DSC-FH0003	Hinge Screw	25	F-22	DTL-CC0001	Spanner	33	J-9
DSC-BJ0003	Screw(9/64"n=40)	17	D-78	DSC-FH0004	Stud Screw For Tension Release Plate	25	F-33	DWS-AA0006	Washer	27	G-17
DSC-BJ0003	Screw(9/64"n=40)	25	F-18	DSC-FH0005	Holder	17	D-80	DWS-AA0006	Washer	33	J-28
DSC-BJ0003	Screw(9/64"n=40)	31	I-14-3	DSC-GA0004	Stud Screw For E-26	21	E-26	DWS-AA0006	Washer	45	O-34
DSC-BJ0005	Screw(15/64"n=28)	45	O-26	DSC-GA0004	Stud Screw	45	O-23	DWS-AA0006	Washer	45	O-46
DSC-BJ0014	Screw(9/64"n=40)	25	F-15	DSC-HA0001	Screw(9/16"n=20)	25	F-1	DWS-AA0011	Washer	21	E-6
DSC-BJ0020	Screw	21	E-30	DSC-HC0003	Bed Base "FRONT"(A-TYPE)	7	A-20	DWS-AA0011	Washer	47	P-25
DSC-BJ0024	Screw(3/16"n=32)	17	D-114	DSC-HC0004	Bed base "FRONT"(B)	23	E-63	DWS-AA0015	Washer	15	D-41

Index

Parts No.	Name of Parts	Page	Ref.No.	Parts No.	Name of Parts	Page	Ref.No.	Parts No.	Name of Parts	Page	Ref.No.
DWS-AA0029	Washer	33	J-26	PSR-AC0002	E-Ring(Ø5)	25	F-23				
DWS-AA0038	Washer	7	A-14-4	PSR-AC0002	E-Ring(Ø5)	25	F-34				
DWS-AA0038	Rubber	11	B-54	PSR-AC0002	E-Ring(Ø5)	27	G-4				
DWS-AA0038	Washer	25	F-17	PSR-AC0005	E-Ring(Ø6)	23	E-61				
DWS-AA0038	Washer	45	O-7	PTC-AG0001	Nylon Clip	7	A-30				
DWS-AA0051	Washer	21	E-12	PTC-AG0001	Clip	31	I-20				
DWS-AA0052	Washer	21	E-20	PTC-AG0002	Cable Tie	31	I-21				
DWS-AA0118	Washer	37	K-8-2	PTC-AH0002	Code Holder(7N)	7	A-28				
DWS-AA0284	Washer	37	K-7-7	PTL-AB0001	L Wrench(2mm)	33	J-10				
DWS-CA0001	Washer	13	C-36	PTL-BA0001	Driver(Large)	33	J-2				
DWS-CA0001	Washer	21	E-26-1	PTL-BA0002	Driver(Middle, Small)	33	J-3				
DWS-CA0001	Spring Washer	45	O-45	PWS-AA0005	Washer	27	G-30				
DWS-CB0002	Washer	17	D-111	PWS-AA0006	Washer	45	O-53				
GP-008523	Feed Regulator Shaft	17	D-66	PWS-CA0001	Spring Washer	27	G-29				
GP-009247	Model Mark(KM-250A)	7	A-38	PWS-CA0002	Washer	31	I-14-2				
GP-009249	Model Mark(KM-250BH)	43	N-1	PWS-CA0004	Spring Washer	7	A-23				
GP-009250	Model Mark(KM-250AU-7S)	39	L-3	PWS-CA0004	Spring Washer	25	F-41				
GP-009253	Model Mark(KM-250A-7S)	7	A-40	PWS-CA0005	Spring Washer For Bracket	17	D-101				
GP-009254	Model Mark(KM-250B-7S)	7	A-41	PWS-CA0005	Washer	21	E-53				
GP-009255	Model Mark(KM-250BH-7S)	43	N-2	PWS-CA0005	Washer For Synchronizer	41	M-7-27				
GP-009256	Model Mark(KM-250AU)	39	L-2	SC-0108-4113	Screw(M6)	41	M-7-26				
GP-009288	Model Mark(KM-250BL-7S)	47	P-3	SC-0184-4118	Screw(3/16"n=28)	33	J-27				
GP-009291	Model Mark(KM-250BH-7N)	43	N-3	SC-0485-4113	Screw(M5×P0.8)	45	O-44				
GP-011576	Upper Shaft Bushing(Non Trimming)	11	B-12	SC-0509-1230	Screw(15/64"n=28)	33	J-36				
GP-022643	Bobbin Case Ass'y	13	C-33	-	Needle	11	B-49				
GP-034931	Feed Bar	15	D-43	-	Needle	11	B-50				
GP-034931	Feed Bar(BH-Type)	43	N-7	-	Synchronizer Ass'y	11	B-51				
GP-056098	Needle Bar(B-TYPE)	11	B-40	-	Needle(A-Type)	33	J-5				
HEC-2507	Auto Knee Lifter Solenoid Ass'y	37	K-7-1	-	Needle(B-Type)	33	J-6				
KM-2507	Auto Knee Lifter Solenoid Ass'y	37	K-7	-	Nail	33	J-20				
PBR-BA0012	Needle Bearing	21	E-13	-	Needle(AU-Type)	39	L-6				
PPK-AA0001	Oil Sea	11	B-22	-	Synchronizer Ass'y	41	M-8				
PPK-AD0001	Oil Seal	37	K-7-13								
PPK-BA0004	O-Ring	11	B-3								
PPK-BA0004	O-Ring	25	F-20								
PPK-BA0007	O-Ring	17	D-82								
PPK-BA0008	O-Ring	17	D-67								
PPK-BA0009	O-Ring	17	D-92								
PPK-BB0001	O-Ring	31	I-2								
PPN-AD0001	Pin	7	A-43								
PPN-AF0009	Pin	31	I-14-10								
PSC-AC0006	Screw(M6)	17	D-102								
PSC-AC0006	Screw(M6)	21	E-18								
PSC-AC0012	Screw	45	O-17								
PSC-AC0012	Screw(M6×P1)	45	O-52								
PSC-AC0015	Screw	47	P-24								
PSC-AC0026	Screw(M8×1.25)	7	A-22								
PSC-AC0111	Screw(3/16"n=28)	37	K-7-10								
PSC-BA0001	Screw(M3×0.5)	27	G-28								
PSC-CB0002	Screw(M4)	27	G-9								
PSC-DD0001	Nail	33	J-29								
PSN-AA0005	Nut(M8×1.25)	7	A-24								
PSN-AA0017	Hinge Nut	17	D-106								
PSN-AA0017	Nut B	47	P-20								
PSR-AA0001	Stop-Ring For E-11	21	E-11								
PSR-AA0004	Stop-Ring "C"	15	D-4								
PSR-AC0001	E-Ring(Ø9)	21	E-21								
PSR-AC0001	E-Ring(Ø9)	29	H-6								
PSR-AC0001	E-Ring(Ø9)	33	J-38								
PSR-AC0002	E-Ring(φ5)	15	D-24								
PSR-AC0002	E-ring(Ø5)	17	D-76								
PSR-AC0002	E-Ring(Ø5)	21	E-50								