



PARTS BOOK

KM-380BL

Cylinder-Bed Type, 1-Needle
Unison Feed, Vertical Large Hook,
Lock Stitch Machine

실린더 베드형, 1본침 본봉 총합송
재봉기 (수직 2배혹)

KM-380BLB

Cylinder-Bed Type, 1-Needle
Unison Feed, Vertical Large Hook,
Lock Stitch Machine

With Synchronized Binder

실린더 베드형, 1본침 본봉 총합송
바인더부착 재봉기(수직 2배혹)

PME-120828

Information

A. Parts Book 구성

Structure of Part Book

① **A** Arm, Bed & Machine Body Mechanism
팔, 침대 및 의장품 관계

②

③

④ ⑤ ⑥ ⑦ ⑧ ⑨

Ref. No.	Parts No.	Note	Name of Parts	품명	Q'ty	Assembly No.
A-1	01-12841-03		Arm	어ーム	1	
A-2	01-10073-06		Bed	침대	1	
A-4	01-02120-00		Face Plate	면판	1	
A-5	01-02044-12H		Face Plate Gasket	면판 가스켓	1	
A-6	01-1174-4122		Screw(L)104*mm2	볼트	10	
A-7	01-11011-123D		Rubber Cap For Face Plate	면판 고무뚜껑	2	
A-9	01-00194-123D		Caution Sscrew	경고 스크류	1	
A-8	01-011973-00		Turn-up Lower Cover	상방기 하판	1	
A-10	01-02020-00		Screw(S)104*mm2	볼트(S)104*mm2	1	
A-11	01-01746-00		Bed Cover(L)	침대 커버(좌)	1	
A-12	01-01441-123H		Bed Cover (Gasket,L)	침대 커버 가스켓(좌)	1	
A-13	01-02643-123D		Screw(L)104*mm2	볼트(S)104*mm2	14	
A-13-1	45-0244-1002		Washer	와셔	2	
A-14	01-01750-00		Bed Cover(S)	침대 커버(우)	1	
A-15	01-01744-123H		Bed Cover (Gasket,R)	침대 커버 가스켓(우)	1	
A-16	440211-100H		Tank Rubber Cap	고압 탱크 고무뚜껑	1	
A-17	01-0274-123D		Thread (Slide with Three Poles)	세우틀 슬라이드(3극)	15Set	
A-19	01-0201-123D		Thread (Slide(L))	면판 슬라이드(좌)	1	
A-20	01-0202-123D		Thread (Slide(R))	면판 슬라이드(우)	3	
A-21	01-0100-123D		Thread (Slide(S))	면판 슬라이드	1	
A-22	01-01643-00		Arm Thread Guide Assy	어ーム 슬라이드 가이드(조)	1	
A-23	11-0175-752D		Nut	너트	1	
A-24	01-0201-123H		Thread (Slide(L))	면판 슬라이드(좌)	1	
A-25	010275-100H		Siicon Tank Assy	실리콘 탱크 어셈블리(조)	15Set	
A-26	010206-100H		Siicon Tank	실리콘 탱크 부품	1	
A-27	010206-100H		Siicon Oil Window	실리콘 유량 창	1	
A-28	010240-100H		Siicon Part	실리콘 부품	1	
A-29	01-1305-00		Part for Siicon Oil Supply	실리콘 기름 공급 부품	1	
A-30	01-0164-123D		Screw(L)104*mm2	볼트(S)	1	
A-32	04-0481-123D		Arm Upper Part Rubber Cap	어ーム 상부 고무 뚜껑	2	
A-33	04-0201-123H		Needle Bar Rubber Cap	바늘봉 고무 뚜껑	1	
A-34	01-04201-042L		Rubber Cap(L)	고무뚜껑(좌)	4	
A-35	44-02111-742D		Rubber Cap(S)	고무뚜껑(우)	7	
A-36	01-0175-123D		Bed Rubber	침대 고무	1	
A-37	01-01917-00		Welder (Sticker,R)	인쇄 스티커-우부품	1	
A-38	01-01918-00		M Welder (Sticker,M)	인쇄 스티커-중부품	1	
A-39	01-01919-00		L Welder (Sticker,L)	인쇄 스티커-좌부품	1	
A-40	01-01920-00		K Welder (Sticker,K)	인쇄 스티커-대부품	1	
A-41	01-02110-123D		Tap Cover	타프 커버	2	
A-42	01-0214-123H		Tap Cover	타프 커버	1	
A-43	41-014-123H		Bobbin Winder Assy	실감기(조)	15Set	
A-44	41-02015-100H		Bobbin Winder (Base Assy)	실감기 베이스(조)	1	
A-45	41-0205A-123H		Bobbin Winder (Shaft)	실감기 구동축	1	
A-46	01-0206-00	S. Color	Sticker(S)	색 인쇄 스티커	1	
A-47	01-0207-750D		Screw(S)	볼트(S)	1	
A-48	41-0208-100H		Bobbin Winder	실감기 부품(좌)	1	
A-49	01-0104-552T		Screw(L)104*mm2	볼트(S)	2	
A-50	41-0209-100H		Bobbin Winder Action Ring	실감기 작동링	1	
A-51	41-0210-100H		Bobbin Winder (Rubber Ring)	실감기 고무링 고무링	1	
A-52	41-0211-100H		Bobbin Winder (Screw)	실감기 볼트	1	
A-53	41-02115-100H		Bobbin Winder Adjusting Plate	실감기 조정판	1	
A-54	01-0130-123D		Screw(L)104*mm2	볼트(S)104*mm2	1	
A-55	01-01194-123D		Washer	와셔	1	
A-56	41-0213-100H		Bobbin Winder Lower (Shaft)	실감기 하부 축	1	
A-57	41-0214-100H		Bobbin Winder Adjusting Term	실감기 조정 용	1	
A-58	01-0150-4113		Screw(M)4x2.7	볼트(S)	1	

Note: P= Heavy Material(중량재), M=Medium Material(중량재), MA= Pneumatic Heavy Material(공압식 중량재)
L= Light Material(저중량재), K=Kitt Material(커트재), EL=Large Shruble Piece(대 시틀 부품)

①:관계 별 고유 코드

Unique code by mechanism

②:관계 별 고유 명칭

Unique name by mechanism

③:관계도

Explode view

④Ref.No.:파트별 고유 식별 번호

Unique identification number by part

⑤Parts No.:고유 제품 코드

Unique Product code

Ex)

구분 Category	Code	비고 remarks
구 부품 Old part	01-030C-1230	
신 부품 New Part	AS-000000-00	조(조) 파트 Set parts
	GP-000000-00	기구적 파트 Instrumental parts
	EP-000000-00	전기적 파트 Electrical parts

⑥Note:공지사항 표기 및 메모

Refers to notice and memo

⑦품

명:파트의 고유 품명

Name of Part:Unique name of parts

⑧Q'ty :파트의 수량

The number of parts

⑨Assembly no.:조(조) 파트의 식별 번호

Unique identification number by set part

Warning

1. 조에 속한 파트는 개별 조립 시 제품의 파손 또는 재봉 불량 발생될 수 있어 해당 파트에 대한 주문 시에는 조 품목으로만 구입이 가능합니다.
2. 본 책자는 Parts Book으로 제작되었으므로 매뉴얼로 사용 불가합니다.
3. 사전 예고 없이 사양이 변경 될 수도 있습니다.

1. The parts classified as ass'y items may cause damage to the machine or bad sewing when they are separately assembled. Hence, when they are ordered, they can be purchased as ass'y items only.
2. This is a parts book. It cannot be used as a manual.
3. Parts are Subject to change in Design Without Prior Notice.

Note

- 썬스타 제품의 부품은 아래 인터넷주소로 접속하시어 신청할 수 있습니다.
<http://www.sunstarcs.com>
- 가입된 회원께서는 썬스타 포탈 사이트에 로그인후 필요한 부품을 신청할 수 있습니다.
- 부품관리-발주관리-발주등록 항목에서 부품번호와 신청수량을 입력하여 등록하시면 발주가 됩니다.
- 부품번호를 모르시는 경우 파츠북 조회를 클릭하시고 사용하는 기종을 검색하여 선택하시면 해당 기종의 파츠북을 조회할 수 있습니다.
- 파츠북은 관계별로 구분되어 있으며 관계를 알고 있다면 부품 찾기가 용이합니다.
- You can make an order for the parts of Sunstar machine to connect internet address.
<http://www.sunstarcs.com>
- You can request for parts you want after login if you are a registered member.
- In parts Management - Order Management - Order Registration entry, you can place an order by entering the part number and quantity.
- If you don't know the parts number, click the parts book menu bar.
In a download list, you can read parts book by searching model you use.
- This parts book is classified by the mechanism, therefore you can find part easily.

MODEL

FOR HEAVY MATERIAL

- **KM-380BL**

CYANDER-BED TYPE, 1- NEEDLE UNISON FEED, VERYICAL LARGE HOOK, LOCK-STITCH MACHINE

- **KM-380BLB**

CYANDER-BED TYPE, 1- NEEDLE UNISON FEED, VERYICAL LARGE HOOK, LOCK-STITCH MACHINE
WITH SYNCHRONIZED BINDER

CONTENTS

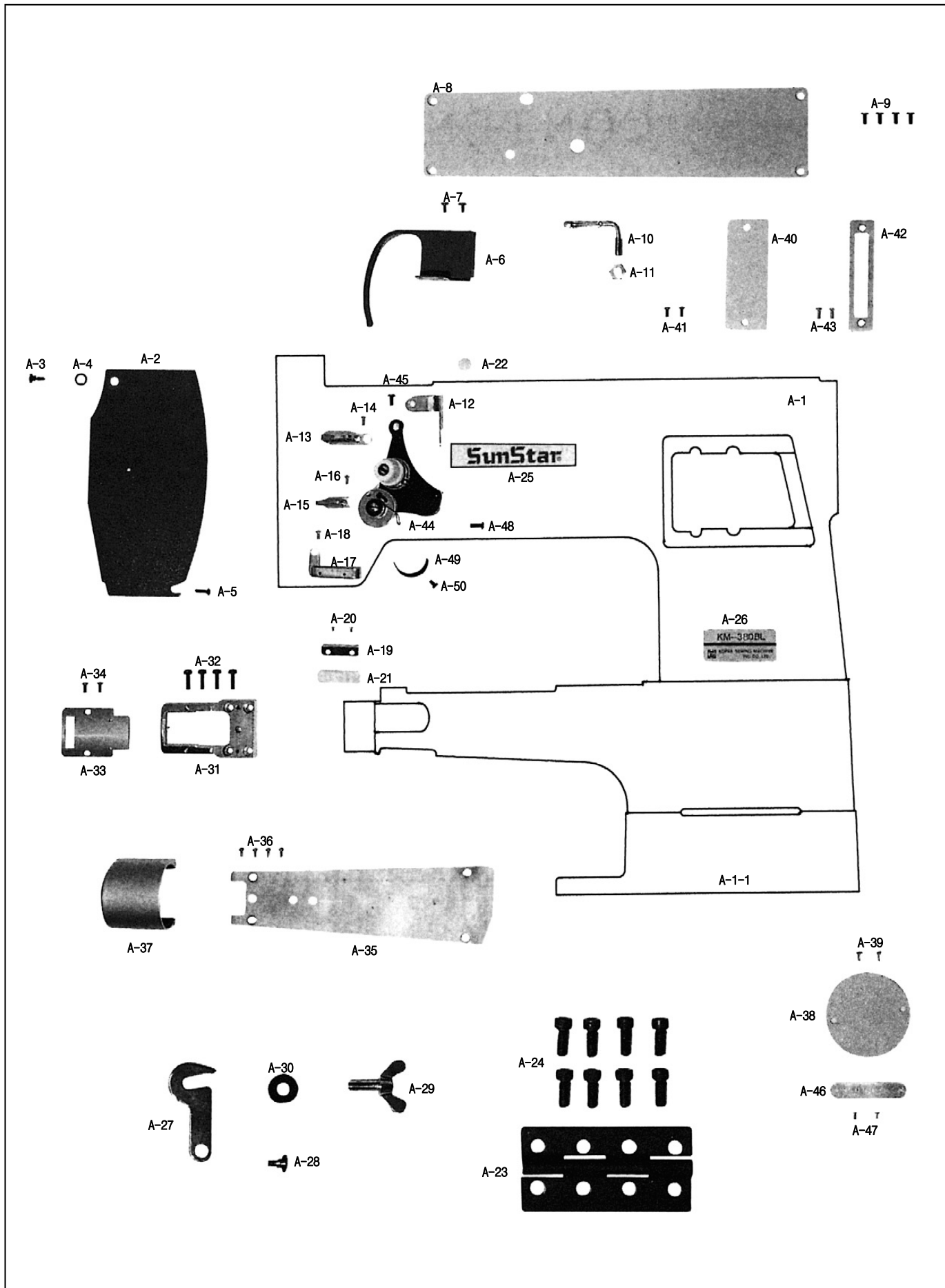
목 차

A	Machine Body & Thread Tension Adjusting Mechanism 외장 및 실장력 조절 관계	6
B	Upper and Upright Shaft Mechanism 상축 및 세운축 관계	8
C	Needle Bar and Upper Feed Mechanism 바늘대 및 상피이드 관계	10
D	Lower Shaft and Lower Feed Mechanism 하축 및 하피이드 관계	12
E	Presser Foot and Knee Lifting Mechanism 노루발 및 무릎올림 관계	14
F	Lubrication Mechanism 급유 관계	18
G	Accessories Mechanism 액세서리 관계	22
H	Binder Mechanism (KM-380BLB) 바인더 관계 (KM-380BLB)	26
I	Gauge Parts 게이지 파트	28
	Index 인덱스	32

A

Machine Body & Thread Tension Adjusting Mechanism

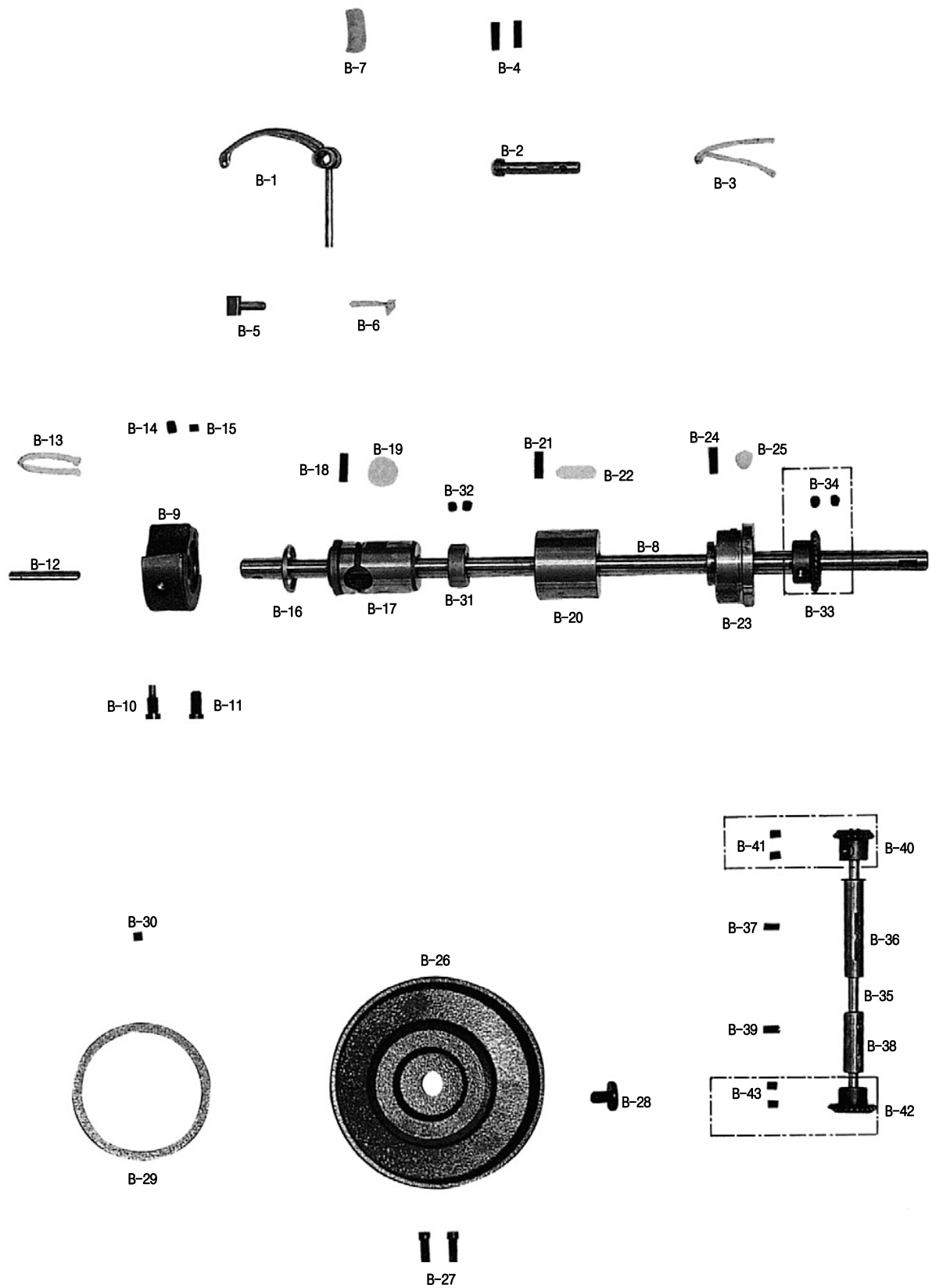
외장 & 실장력 조절 관계



B

Upper and Upright Shaft Mechanism

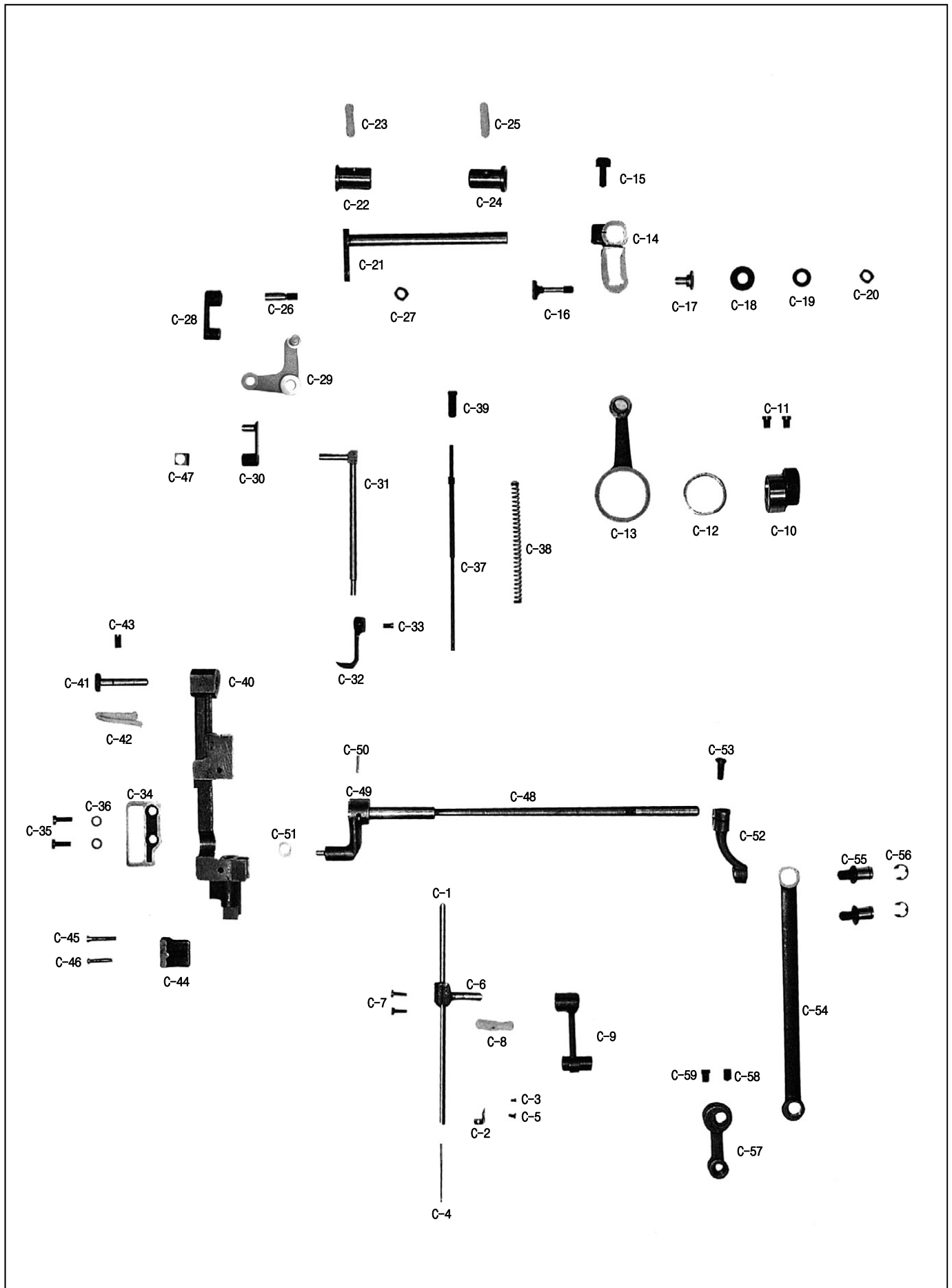
상축 및 세운축 관계



C

Needle Bar and Upper Feed Mechanism

바늘대 및 상피이드 관계





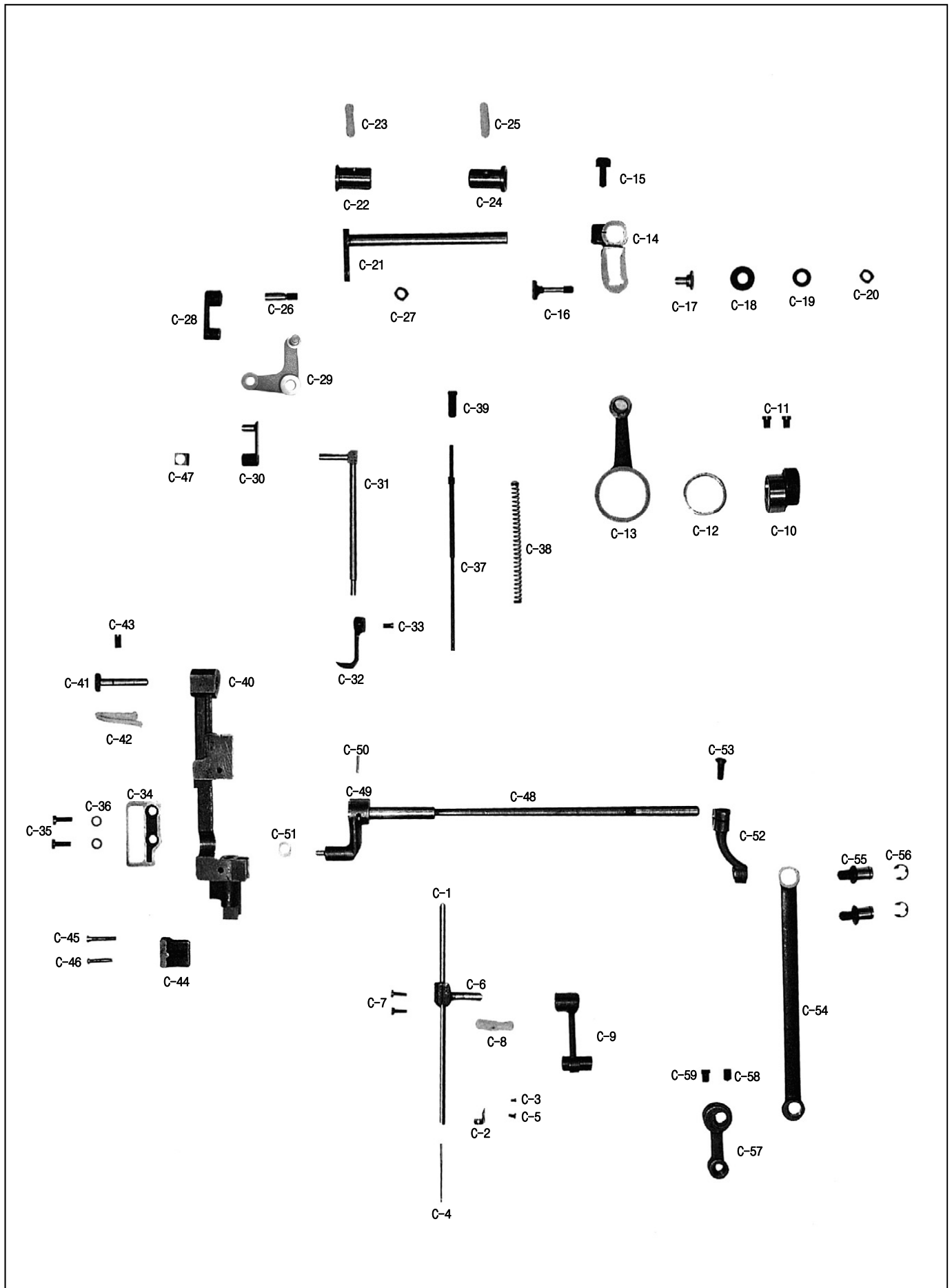
Ref. No.	Parts No.	Note	Name of Parts	품명	Q'ty	Applied Period
C-1	CNB-KA002000		Needle Bar	바늘대	1	
C-2	CNB-HK001500		Needle Guide For Needle Bar	바늘대 실안내	1	
C-3	DSC-BJ002200		Screw (3/32"n=56)	바늘대 실안내 첩나사 (3/32"n=56)	1	
C-4	-		Needle	바늘	1	
C-5	DSC-BJ004300		Screw (9/64"n=40)	바늘 첩나사 (9/64"n=40)	1	
C-6	CNB-BF001800		Needle Bar Holder	바늘대 잡이	1	
C-7	DSC-BJ000300		Screw (9/64"n=40)	톱카바나사 (우) (9/64"n=40)	2	
C-8	CLB-JL000800		Oil Felt	절환기 펠트	1	
C-9	CTH-CC001400		Needle Bar Crank	바늘대 크랭크	1	
C-10	CUF-DC000400		Upper Feed Lifting Eccentric Cam	노루발 상하운동 캠	1	
C-11	DSC-BJ002000		Screw For C-10	노루발 상하운동 캠 고정나사	2	
C-12	PBR-BA002800		Needle Bearing	니어들 베어링	1	
C-13	CUF-CC001500		Upper Feed Lifting Cam Lod	노루발 상하운동 캠 로드	1	
C-14	CUF-CB001900		Upper Feed Eccentric Wheel Crank	상하운동 크랭크 (K2556)	1	
C-15	DSC-AA000700		Screw (1/4"n=28)	상하운동 크랭크 첩나사 (1/4"n=28)	1	
C-16	CUF-KZ000700		Upper Feed Lifting Adjusting Shaft	노루발 상하운동 조절축	1	
C-17	DBS-DB006700		Bushing For C-16	노루발 상하운동 조절축 붓심	1	
C-18	15-009A-5607		Collar For C-16	노루발 상하운동 조절축 카라	1	
C-19	DWS-AA006300		Washer For C-16	노루발 상하운동 조절축 와셔	1	
C-20	DSN-AA000500		Nut(1/4"n=40)	수평운동 조절축 너트 (1/4"n=40)	1	
C-21	CUF-KZ000501		Upper Feed Driving Shaft	상하운동축	1	
C-22	DBS-DB006200		Front Bushing For C-21	상하운동축 전 붓심	1	
C-23	CLB-JL009000		Felt For C-22	상하운동축 전 붓심 펠트	1	
C-24	DBS-DB006300		Rear Bushing For C-21	상하운동축 후 붓심	1	
C-25	CLB-JL009000		Felt For C-24	상하운동축 후 붓심 펠트	1	
C-26	DSC-FF001900		Stud Screw For Connection Link	상피이드 연결링크 축나사	1	
C-27	DSN-AA000500		Nut(1/4"n=40)	수평운동 조절축 너트 (1/4"n=40)	1	
C-28	CUF-CA001500		Connecting Link For Upper Feed Lifting	상피이드 연결링크	1	
C-29	CUF-CA001700		Link For Upper Feed Foot	상피이드 노루발 연결링크	1	
C-30	CUF-CA001800		Walking Bar Driving Link	상피이드 노루발 운동링크	1	
C-31	CUF-KZ000600		Walking Bar	상피이드 노루발대	1	
C-32	CGA-GC005900	BL	Upper Feed Presser Foot	상피이드 노루발 (B)	1	
C-33	DSC-BA001000		Screw (11/64"n=40)	인봉카라 첩나사 (11/64"n=40)	1	
C-34	CNB-BK001200		Walking Bar Guide Plate	노루발대 안내판 (K2555)	1	
C-35	DSC-BF000500		Screw (11/64"n=40)	어스나사 (다도금) (11/64"n=40)	1	
C-36	DWS-AA009500		Washer For C-34	와셔5	2	
C-37	CUF-KF000300		Walking Foot Pressure Adjusting Pole	상피이드 노루발 압력봉	1	
C-38	DSP-AA009400		Walking Foot Pressure Spring	상피이드 노루발 압력 스프링	1	
C-39	DSC-BF003500		Screw (5/16"n=28)	상피이드 노루발 압력 조절나사 (5/16"n=28)	1	
C-40	CNB-BC000700		Needle Bar Frame	바늘대 후레임	1	
C-41	DPN-AD008500		Hinge Pin For C-40	바늘대 후레임 힌지핀	1	
C-42	CLB-JD000300		Oil Wick	유심	1	
C-43	DSC-CA000800		Screw (15/64"n=28)	상축 붓심 고정나사 (15/64"n=28)	1	
C-44	CNB-BK001300		Guide For Needle Bar Frame	바늘대 후레임 안내판	1	
C-45	DSC-BJ005300		Screw (A) For C-44	바늘대 후레임 안내판 첩나사 (B)	1	
C-46	DSC-BA001100		Screw (11/64"n=40)	위뚜껑 첩나사 (11/64"n=40)	1	
C-47	CUF-CD000200		Walking Bar Guide Block	상피이드 노루발대 안내블럭	1	
C-48	CNB-KF000300		Needle Bar Frame Driving Shaft	바늘대 후레임 요동축	1	
C-49	CNB-CB000300		Needle Bar Frame Shaft Crank (F)	요동축 크랭크 (전)	1	
C-50	DPN-AB000300		Pin For C-49	로울러 축 고정핀	1	
C-51	CNB-CD001100		Needle Bar Frame Block	바늘대 후레임 블럭	1	
C-52	CUF-CB001800		Needle Bar Rock Crank	요동축 크랭크 (후)	1	
C-53	DSC-BJ000600		Screw (15/64"n=28)	포크 첩나사 (15/64"n=28)	1	
C-54	CUF-CC001600		Connecting Rod For C-48	요동축 연결로드	1	
C-55	DSC-FG001800		Stud Screw For C-54	수평밀대 크랭크 연결 단나사	2	
C-56	PSR-AC000900		E-Ring (φ7)	피이드 조절기 힌지핀 E링 (φ7)	2	
C-57	CUF-CB001700		Needle Bar Rock Crank	바늘대 요동크랭크	1	

NOTE:
"BL" is a
parts only for
model KM-380BL

C

Needle Bar and Upper Feed Mechanism

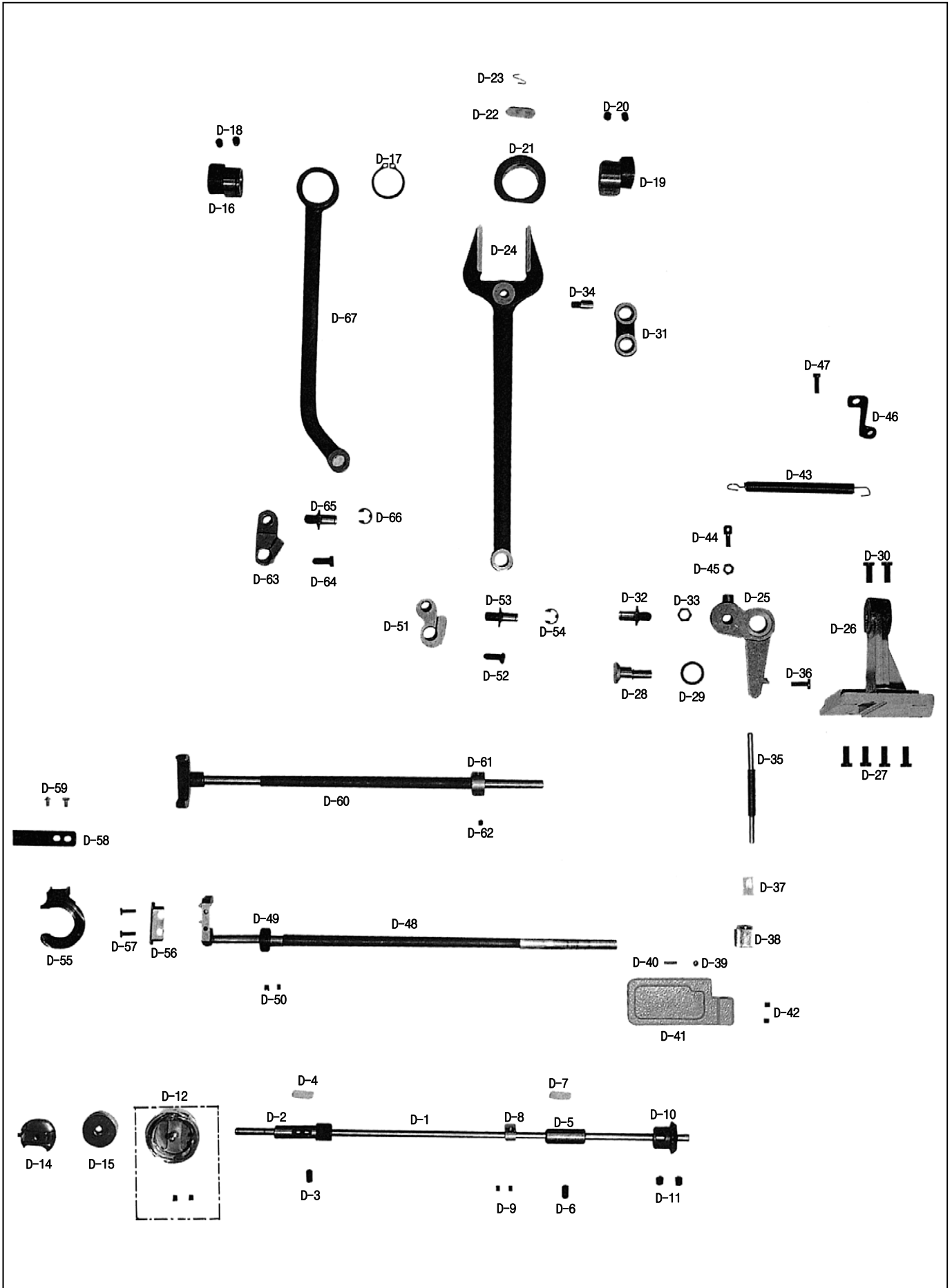
바늘대 및 상피이드 관계



D

Lower Shaft and Lower Feed Mechanism

하축 및 하피이드 관계





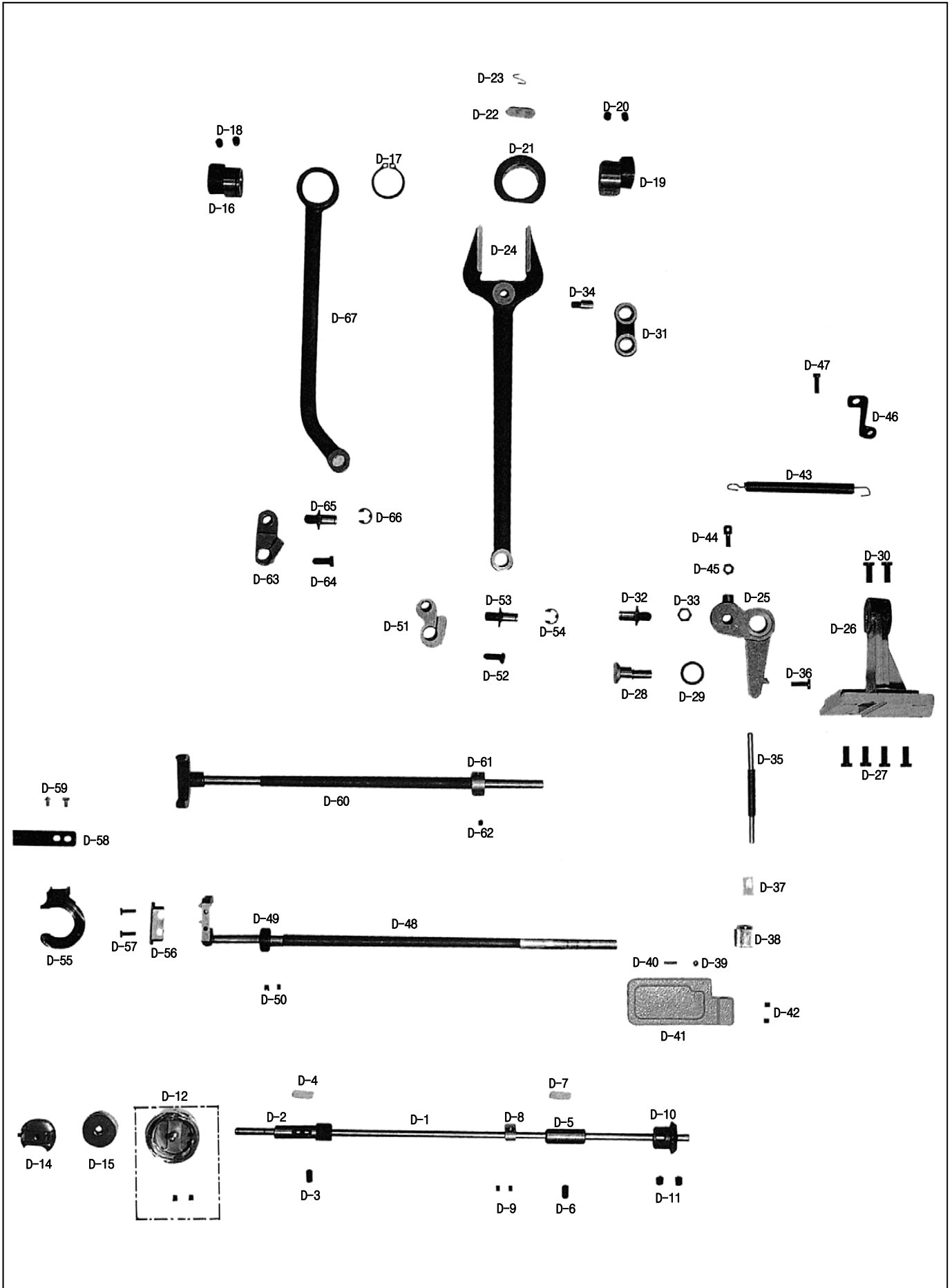
Ref. No.	Parts No.	Note	Name of Parts	품 명	Q'ty	Applied Period
D-1	CLS-KC002500		Lower Shaft	하축	1	
D-2	DBS-CB006400	BL	Lower Shaft Front Bushing	하축 앞 붓심	1	
D-3	DSC-CB000900		Screw (15/64"n=28)	바란스링 쥘나사 (15/64"n=28)	1	
D-4	CLB-JL009400		Felt (15×4)	헬트 (15×4)	1	
D-5	DBS-DA022300		Lower Shaft Rear Bushing	하축 후 붓심	1	
D-6	DSC-CA000800		Screw (15/64"n=28)	상축 붓심 고정나사 (15/64"n=28)	1	
D-7	CLB-JL009400		Felt (15×4)	헬트 (15×4)	1	
D-8	DCL-AA007500		Collar For Lower Shaft	하축 카라	1	
D-9	DSC-CA004000		Screw (15/64"n=28)	테이프 안내 쥘나사 (15/64"n=28)	1	
D-10	DGR-AD000400		Lower Shaft Gear	하축 기어	1	
D-11	DSC-CB001100		Screw (1/4"n=40)	편심 카라 쥘나사 (1/4"n=40)	2	
D-12	CHK-HA001400		Rotary Hook	로터리 훅 KHS-GTVG	1	
D-14	CHK-HC000500		Bobbin Case	보빈 케이스 BC-DBM (1)	2	
D-15	CHK-HB000700		Bobbin	보빈	1	
D-16	CLS-DC001600	BL	Feed Cam (A)	피이드 캠 (A)	1	
D-17	PSR-AA001400	BL	Feed Cam (A) Stop Ring (φ22)	피이드 캠 (A) 멈춤링 (φ22)	1	
D-18	DSC-CA001900	BL	Screw (1/4"n=40)	기어나사 (5-16) (1/4"n=40)	2	
D-19	CLF-DC001600		Feed Cam (B)	피이드 캠 (B)	1	
D-20	DSC-CA001900		Screw (1/4"n=40)	기어나사 (5-16) (1/4"n=40)	2	
D-21	CLF-BN000100		Connection Ring For Y-Rod	Y-롯드 연결링	1	
D-22	CLB-JL007600		Felt For D-21	Y-롯드 연결링 급유 헬트	1	
D-23	CLB-BH001800		Holder For D-22	상하운동 캠롯드 유심잡이	1	
D-24	CLF-CC001700		Y-Rod	Y-롯드	1	
D-25	CFA-CM001500		Feed Regulator	피이드 조절기	1	
D-26	CFA-BC000100		Feed Regulator Supporting Frame	피이드 조절기 부착 후레임	1	
D-27	DSC-BJ000600		Screw (15/64"n=28)	포크 쥘나사 (15/64"n=28)	4	
D-28	CFA-KH000200		Feed Regulator Shaft	피이드 조절기 축	1	
D-29	DWS-CB000800		Washer For D-28	피이드 조절기 축 와셔	1	
D-30	DSC-BJ000600		Screw (15/64"n=28)	포크 쥘나사 (15/64"n=28)	2	
D-31	CFA-CA001200		Feed Link	피이드 링크	1	
D-32	DSC-FG001900		Feed Link Connecting Screw (A)	피이드 조절기 연결축 나사	1	
D-33	DSN-AA002200		Nut(9/32"n=28)	새드조절기 조절연결단나사 너트 (9/32"n=28)	1	
D-34	DSC-FF002000		Feed Link Connecting Lever Shaft	피이드 링크 연결축 나사 B	1	
D-35	CFA-KZ000200		Reverse Feed Control Lever Shaft	역진 레버축	1	
D-36	DSC-BF002600		Screw (3/16"n=32)	톱니받침 크랭크 쥘나사 (3/16"n=32)	1	
D-37	CFA-BQ000100		Feed Adjusting Pipe	피이드 조절 파이프	1	
D-38	DSN-CZ000900		Nut For Feed Regulator	따수 조절 너트	1	
D-39	PBR-AD000200		Ball For Feed Regulator	역진 레버 볼	1	
D-40	DSP-AA006400		Spring For Feed Regulator	다이알 스프링	1	
D-41	CFA-CM001600		Reverse Feed Control Lever	역진레버	1	
D-42	DSC-CB000700		Screw (M5)	캠 접촉 카바 고정나사 (M5)	2	
D-43	DSP-AB004400		Feed Regulator Return Spring	피이드 조절기 리턴 스프링	1	
D-44	CUF-BF000300		Hook (A) For D-43	피이드 조절기 리턴 스프링 걸이 (A)	1	
D-45	DSN-AA000600		Nut (3/16"n=32)	오프너 너트 (3/16"n=32)	1	
D-46	CFA-BG000100		Supension Bracket	역진 레버 스프링 걸이	1	
D-47	DSC-BF001100		Screw (3/16"n=28)	틀대 크랭크 (전) 고정나사 (3/16"n=28)	1	
D-48	CLF-KZ000500	BL	Feed Rock Shaft	수평밀대	1	
D-49	DCL-AA007400		Feed Rock Shaft Collar	수평밀대 카라	1	
D-50	DSC-CA000600		Screw (11/64"n=40)	곡봉 실걸이 나사 (11/64"n=40)	2	
D-51	CLF-CB002800		Feed Rock Shaft Crank	수평밀대 크랭크	1	
D-52	DSC-BJ000600		Screw (15/64"n=28)	포크 쥘나사 (15/64"n=28)	1	
D-53	DSC-FG001800		Feed Rock Shaft Crank Stud	수평밀대 크랭크 연결 단나사	1	
D-54	PSR-AC000900		E-Ring (φ7)	피이드 조절기 힌지 핀 E링 (φ7)	1	
D-55	CLF-BA000600	BL	Feed Bar	톱니 받침	1	
D-56	CLF-BB000600	BL	Feed Bar Guide	톱니 받침 안내	1	
D-57	DSC-BJ000300	BL	Screw (9/64"n=40)	톱카바 나사 (우) (9/64"n=40)	2	
D-58	CGA-GB001600	BL	Feed Dog	톱니	1	

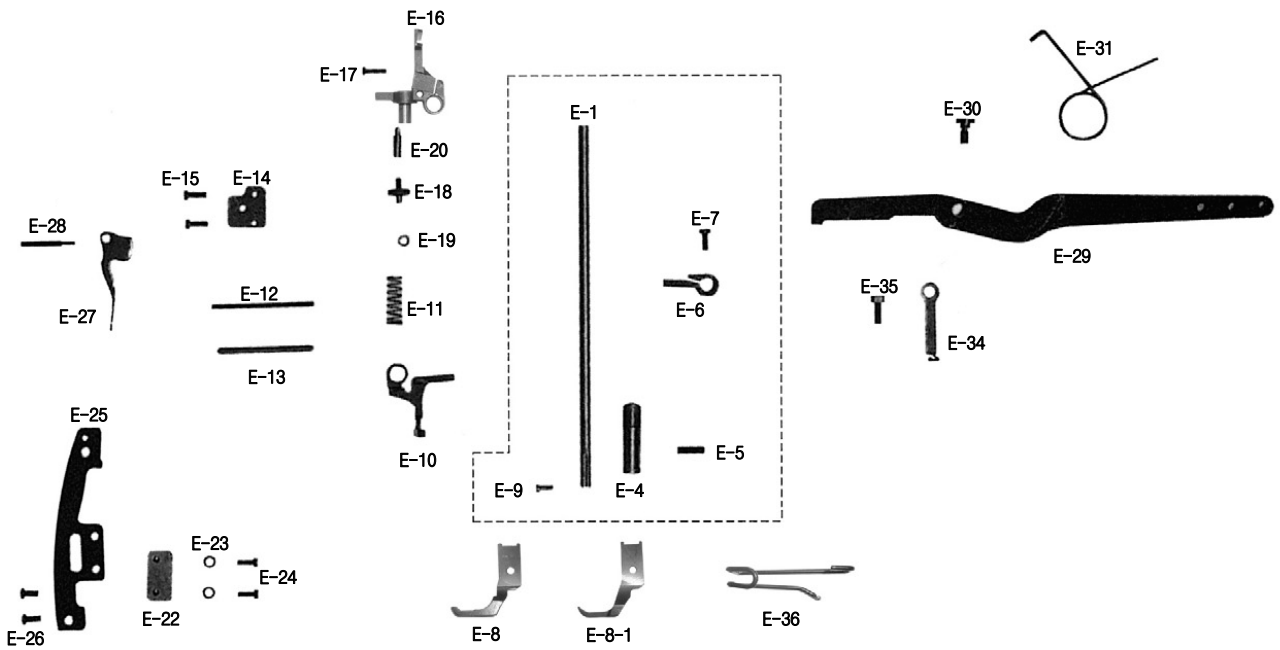
NOTE:
"BL" is a
parts only for
model KM-380BL

D

Lower Shaft and Lower Feed Mechanism

하축 및 하피이드 관계

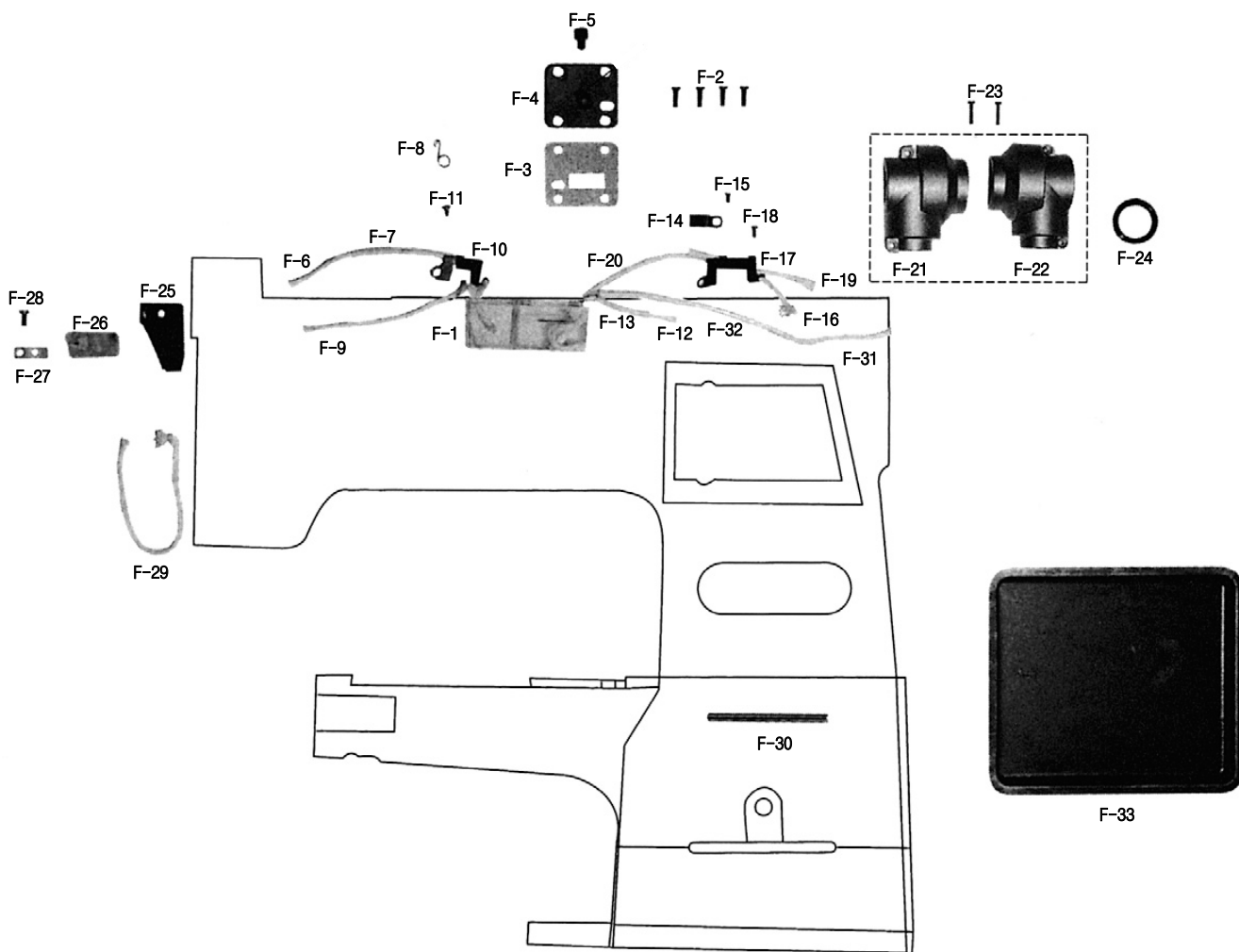


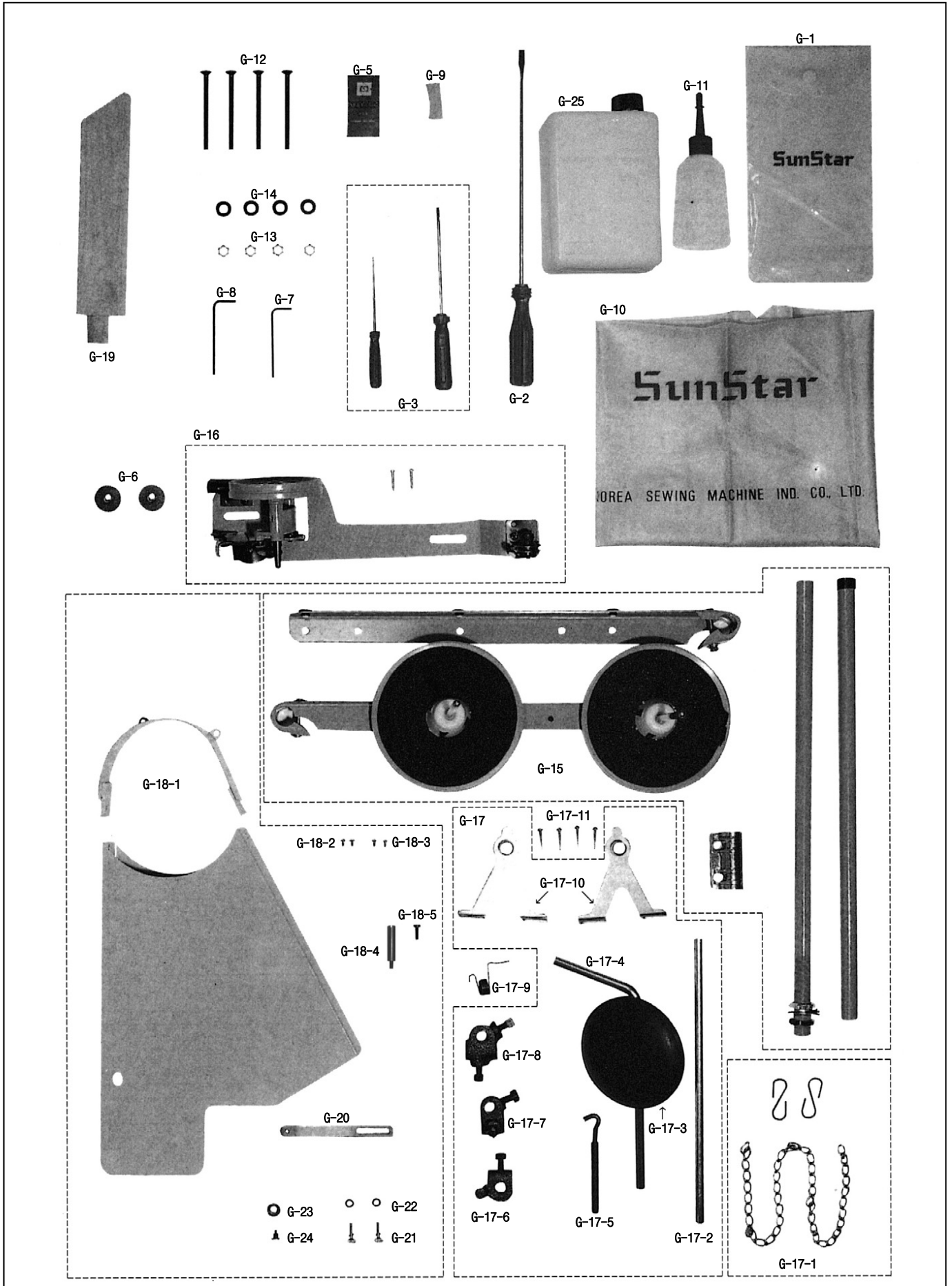


F

Lubrication Mechanism

급유 관계

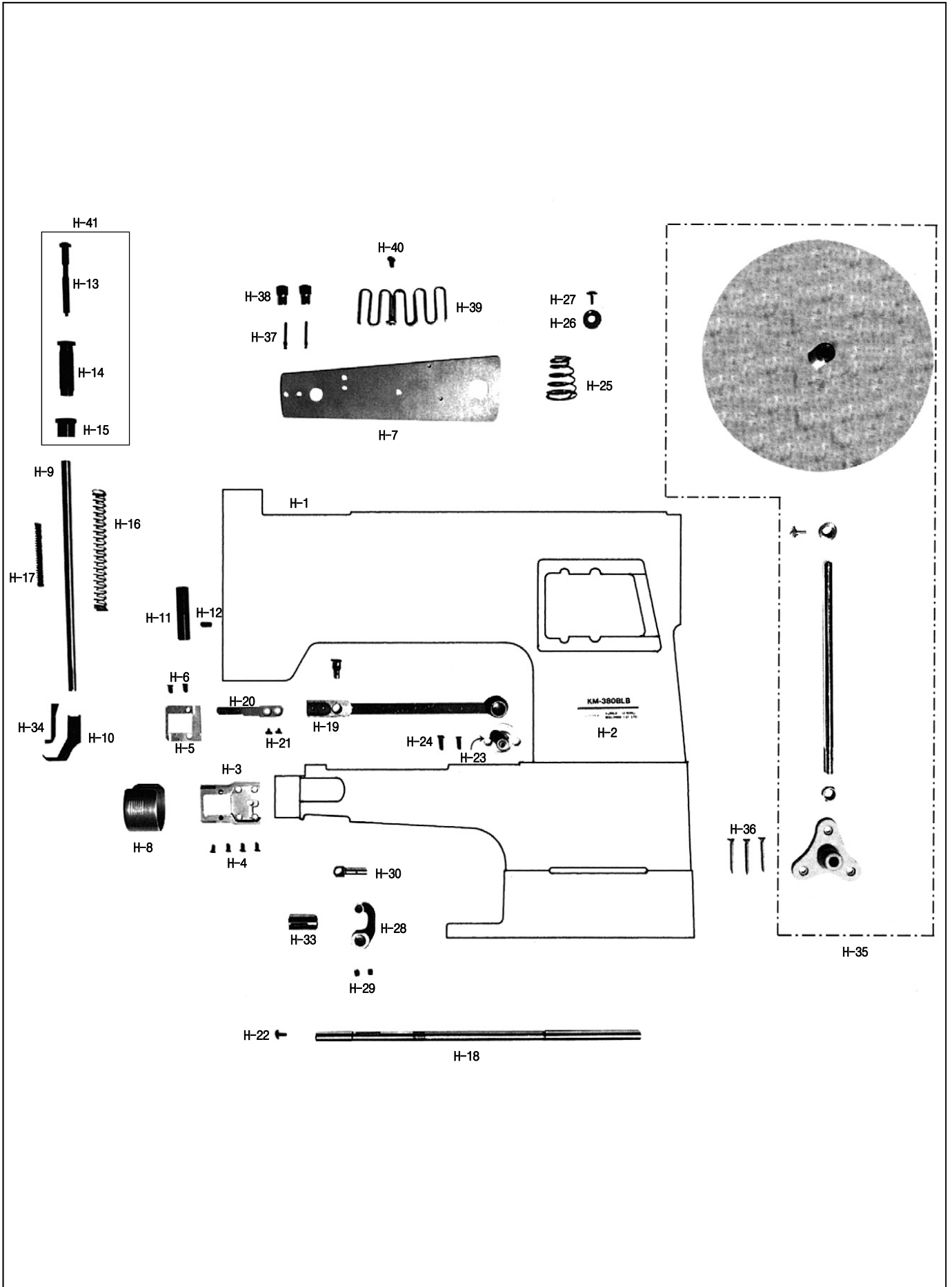


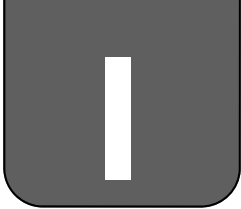




Binder Mechanism (KM-380BLB)

바인더 관계 (KM-380BLB)

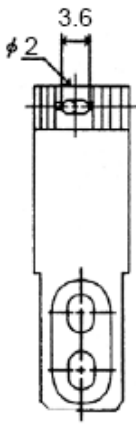
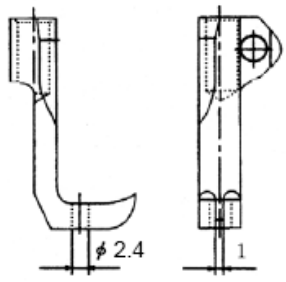
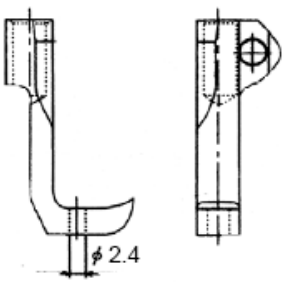
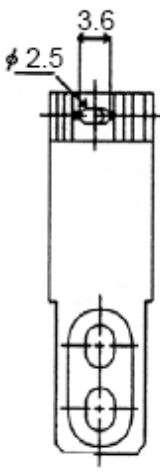
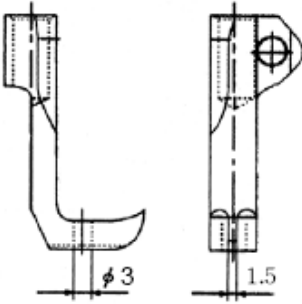
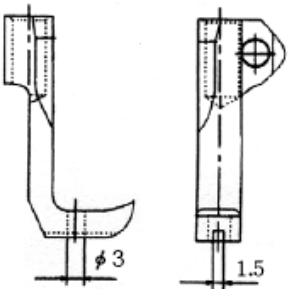




Gauge Parts

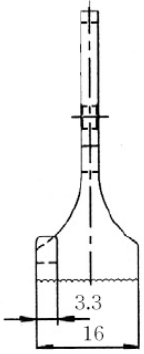
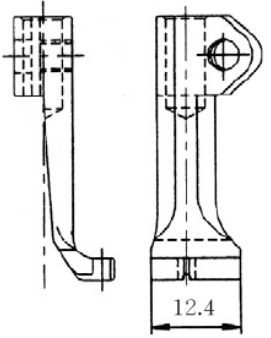
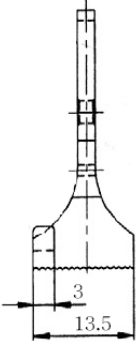
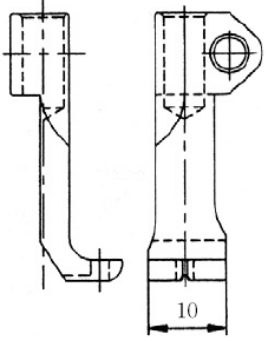
게이지 파트

KM-380BL

Feed Dog (톱니)			Upper Feed Presser Foot (상 피이드 노루발)		
Ref. No.	Parts No.	Specification	Ref. No.	Parts No.	Specification
D-58	CGA-GB001600	Standard Parts 	C-32	CGA-GC005800	Standard Parts 
		Option Parts 			
	CGA-GB003800	Option Parts 		CGA-GC005700	Option Parts(1) 
		Option Parts(2) 			

*If You Wish to Use Special Order Parts, Use "Parts No." Above The Chart to Order It.

KM-380BLB

Sub Presser Foot (보조 노루발)			Upper Feed Presser Foot (상 피이드 노루발)		
Ref. No.	Parts No.	Specification	Ref. No.	Parts No.	Specification
H-10	CGA-GC006000	Standard Parts 	H-34	CGA-GC006200	Standard Parts 
	CGA-GC006700	Option Parts 		CGA-GC006800	Option Parts 

Index

Parts No.	Name of Parts	Page	Ref.No.	Parts No.	Name of Parts	Page	Ref.No.	Parts No.	Name of Parts	Page	Ref.No.
01-001A-38LB	Arm, Cylinder Bed, Base	25	H-1	CLB-JD0003	Oil Wick	9	B-13	CNB-BK0013	Guide For Needle Bar Frame	11	C-44
01-002A-38LB	Arm, Cylinder Bed	7	A-1	CLB-JD0003	Oil Wick	11	C-42	CNB-CB0003	Needle Bar Frame Shaft Crank (F)	11	C-49
01-028W-380L	Washer For G-20	23	G-22	CLB-JG0003	Hose For F-12	21	F-13	CNB-CD0011	Needle Bar Frame Block	11	C-51
05-108A-5607	Sub Presser Foot	19	E-8-1	CLB-JG0003	Hose For F-16	21	F-20	CNB-HK0015	Needle Guide For Needle Bar	11	C-2
06-044A-38LB	Feed Dog	25	H-20	CLB-JG0003	Hose For F-31	21	F-32	CNB-KA0020	Needle Bar	11	C-1
15-009A-5607	Collar For C-16	11	C-18	CLB-JG0003	Hose For F-6	21	F-7	CNB-KF0003	Needle Bar Frame Driving Shaft	11	C-48
40-008A-5607	Thread Tension Release Shaft	19	E-12	CLB-JL0008	Oil Felt	11	C-8	CPB-BB0009	Presser Bar Guide Bracket	19	E-16
43-006A-3800	Knee Lifting (Ass'y)	23	G-17	CLB-JL0030	Felt For B-1	9	B-7	CPB-BF0010	Presser Bar Bracket	19	E-6
60-005C-1230	Support Pin For G-18-1	23	G-18-4	CLB-JL0030	Felt For B-23	9	B-25	CPB-BH0009	Safety Guard	19	E-36
AAC-PS0001	Bobbin Winder (Ass'y)	23	G-16	CLB-JL0066	Felt For B-17	9	B-19	CPB-BJ0013	Plate For Roller Guide	19	E-25
ABA-PS0001	Tape Stand (Ass'y)	25	H-35	CLB-JL0076	Felt For D-21	15	D-22	CPB-BK0004	Guide Bar Bracket Roller	19	E-22
ALB-PS0016	Oil Tank (Ass'y)	21	F-1	CLB-JL0088	Felt (Upper Thread)	7	A-21	CPB-BK0006	Presser Bar Guide	25	H-11
AMB-PS0027	Belt Cover (Ass'y)	23	G-18-1	CLB-JL0088	Felt (Upper Thread)	23	G-9	CPB-CL0005	Roller For Presser Bracket	19	E-19
AS-007629	Press Adjust Screw(set)	25	H-41	CLB-JL0090	Felt For C-22	11	C-23	CPB-CM0006	Presser Bar Lifter	19	E-27
AST-PS0005	Bed Hinge (Ass'y)	7	A-23	CLB-JL0090	Felt For C-24	11	C-25	CPB-KB0013	Presser Bar	19	E-1
ATA-PS0032	Thread Tension Control (Ass'y)	7	A-44	CLB-JL0094	Felt (15×4)	15	D-4	CPB-KB0014	Presser Bar	25	H-9
CAB-BA0002	Base	7	A-1-1	CLB-JL0094	Felt (15×4)	15	D-7	CPB-KF0004	Roller Shaft	19	E-20
CAC-BH0001	Connecting Hook For G-17-1	23	G-17-5	CLB-JL0095	Felt For B-20	9	B-22	CPM-BJ00120	Stopper For Knee Lifting Lever	19	E-34
CAC-JB0001	Oiler	23	G-11	CLB-LA0006	Oil Tank Pushing Plate (Ass'y)	21	F-4	CPM-CM0018	Knee Lifting Lever	19	E-29
CAC-JB0002	Oil Tank	23	G-25	CLF-BA0006	Feed Bar	15	D-55	CST-BB0041	Bracket For G-17-2	23	G-17-10
CAC-MA0005	Head Cover	23	G-10	CLF-BA0007	Feed Dog Base	25	H-19	CST-CB0002	Knee Lifting Adjusting Crank	23	G-17-8
CAC-MH0001	Accessory Bag	23	G-1	CLF-BB0006	Feed Bar Guide	15	D-56	CST-CB0005	Crank For G-17-4	23	G-17-7
CBA-BH0001	Tape Guide	25	H-39	CLF-BF0004	Feed Dog Feeding Holder	25	H-30	CST-CB0006	Crank For G-17-5	23	G-17-6
CBA-LB0001	Binder Feeding Cover	25	H-7	CLF-BN0001	Connection Ring For Y-Rod	15	D-21	CST-CR0007	Head Rest	23	G-19
CFA-BC0001	Feed Regulator Supporting Frame	15	D-26	CLF-CB0028	Feed Rock Shaft Crank	15	D-51	CST-FZ0002	Knee Lifting Pad	23	G-17-3
CFA-BG0001	Suspension Bracket	15	D-46	CLF-CB0029	Feed Lifting Shaft Crank	17	D-63	CST-JA0021	Oil Pan	21	F-33
CFA-BJ0013	Length Control Plate	7	A-42	CLF-CB0034	Feed Dog Feeding Crank	25	H-28	CST-KC0003	Knee Supporting Shaft	23	G-17-4
CFA-BQ0001	Feed Adjusting Pipe	15	D-37	CLF-CC0017	Y-Rod	15	D-24	CST-KC0010	Knee Lifting Shaft	23	G-17-2
CFA-CA0012	Feed Link	15	D-31	CLF-CC0018	Crank Rod	17	D-67	CST-MF0001	Thread Stand (Ass'y)	23	G-15
CFA-CM0015	Feed Regulator	15	D-25	CLF-DC0016	Feed Cam (B)	15	D-19	CTA-BJ0019	Stopper For A-44	7	A-49
CFA-CM0016	Reverse Feed Control Lever	15	D-41	CLF-KF0008	Feed Rock Shaft	25	H-18	CTH-BF0001	Thread Take Up Lever Holder	9	B-5
CFA-KH0002	Feed Regulator Shaft	15	D-28	CLF-KF0010	Feed Dog Base Hinge Stud	25	H-23	CTH-CC0014	Needle Bar Crank	11	C-9
CFA-KZ0002	Reverse Feed Control Lever Shaft	15	D-35	CLF-KF0011	Screw (11/32" n=28)	25	H-32	CTH-HJ0020	Thread Take Up Lever	9	B-1
CGA-GA0016	Needle Plate	7	A-33	CLF-KZ0004	Feed Lifting Shaft	17	D-60	CTR-BA0002	Tension Release Plate	19	E-14
CGA-GA0046	Needle Plate	25	H-5	CLF-KZ0005	Feed Rock Shaft	15	D-48	CTR-BJ0017	Thread Tension Release (Ass'y)	19	E-10
CGA-GB0016	Feed Dog	15	D-58	CLS-DC0016	Feed Cam (A)	15	D-16	CTR-BQ0001	Pipe For E-12	19	E-13
CGA-GC0029	Sub Presser Foot	19	E-8	CLS-KC0025	Lower Shaft	15	D-1	CUF-BF0003	Hook (A) For D-43	15	D-44
CGA-GC0059	Upper Feed Presser Foot	11	C-32	CMB-BA0009	Needle Plate Base	7	A-31	CUF-CA0015	Connecting Link For Upper Feed Lifting	11	C-28
CGA-GC0060	Sub Presser Foot (16mm)	25	H-10	CMB-BA0012	Needle Plate Base	25	H-3	CUF-CA0017	Link For Upper Feed Foot	11	C-29
CGA-GC0062	Upper Feed Presser Foot	25	H-34	CMB-BJ0056	Face Plate	7	A-2	CUF-CA0018	Walking Bar Driving Link	11	C-30
CHK-HA0014	Rotary Hook	15	D-12	CMB-BJ0057	Latch	7	A-27	CUF-CB0017	Needle Bar Rock Crank	11	C-57
CHK-HB0007	Bobbin	15	D-15	CMB-BJ0066	Machine Number Plate	7	A-46	CUF-CB0018	Needle Bar Rock Crank	11	C-52
CHK-HB0007	Bobbin	23	G-6	CMB-BJ0067	Attachment Roller Bracket	23	G-20	CUF-CB0019	Upper Feed Eccentric Wheel Crank	11	C-14
CHK-HC0005	Bobbin Case	15	D-14	CMB-CL0001	Attachment Roller	23	G-23	CUF-CC0015	Upper Feed Lifting Cam Lod	11	C-13
CLB-BF0006	Holder For F-16	21	F-17	CMB-HK0055	Arm Thread Guide Plate (L)	7	A-17	CUF-CC0016	Connecting Rod For C-48	11	C-54
CLB-BF0011	Holder For F-9	21	F-10	CMB-HK0073	Three Hole Thread Guide Plate	7	A-12	CUF-CD0002	Walking Bar Guide Block	11	C-47
CLB-BG0038	Holder For Upper Thread Oil Supply Felt	7	A-19	CMB-HK0074	Arm Thread Guide Plate(U)	7	A-13	CUF-DC0004	Upper Feed Lifting Eccentric Cam	11	C-10
CLB-BG0049	Holder For F-13	21	F-14	CMB-HK0075	Arm Thread Guide Plate (M)	7	A-15	CUF-KF0003	Walking Foot Pressure Adjusting Pole	11	C-37
CLB-BH0004	Hook For F-7	21	F-8	CMB-HK0076	Top Cover Thread Guide	7	A-10	CUF-KZ0005	Upper Feed Driving Shaft	11	C-21
CLB-BH0018	Holder For D-22	15	D-23	CMB-LA0149	Top Cover	7	A-8	CUF-KZ0006	Walking Bar	11	C-31
CLB-BJ0023	Oil Cover	21	F-25	CMB-LA0150	Bed Cover	7	A-35	CUF-KZ0007	Upper Feed Lifting Adjusting Shaft	11	C-16
CLB-BJ0032	Oil Cover Presser	21	F-27	CMB-LA0151	Hook Cover	7	A-37	CUR-KC0005	Upright Shaft	9	B-35
CLB-FZ0003	Oil Tank Packing	21	F-3	CMB-LA0152	Front Cover	7	A-40	CUR-LC0001	Gear Case (L)	21	F-21
CLB-JD0003	Felt	21	F-6	CMB-LA0153	Thread Take Up Cover	7	A-6	CUR-LC0002	Gear Case (R)	21	F-22
CLB-JD0003	Felt	21	F-9	CMB-LA0218	Hook Cover	25	H-8	CUS-BN0001	Pulley Ring	9	B-29
CLB-JD0003	Felt	21	F-16	CMB-LB0069	Lower Shaft Cover	7	A-38	CUS-DA0021	Link Cam	9	B-9
CLB-JD0003	Felt	21	F-19	CMB-LD0065	Brand Mark	7	A-25	CUS-KC0022	Upper Shaft	9	B-8
CLB-JD0003	Felt	21	F-29	CMB-LD0074	Model Mark	7	A-26	DBS-CB0064	Lower Shaft Front Bushing	15	D-2
CLB-JD0003	Felt	21	F-31	CMB-LD0076	Model Mark (KM-380BL-B)	25	H-2	DBS-DA0220	Upright Shaft Upper Bushing	9	B-36
CLB-JD0003	Felt (15×31)	21	F-26	CNB-BC0007	Needle Bar Frame	11	C-40	DBS-DA0221	Upright Shaft Lower Bushing	9	B-38
CLB-JD0003	Oil Wick	9	B-3	CNB-BF0018	Needle Bar Holder	11	C-6	DBS-DA0222	Upper Shaft Middle Bushing	9	B-20
CLB-JD0003	Oil Wick	9	B-6	CNB-BK0012	Walking Bar Guide Plate	11	C-34	DBS-DA0223	Lower Shaft Rear Bushing	15	D-5

Index

Parts No.	Name of Parts	Page	Ref.No.	Parts No.	Name of Parts	Page	Ref.No.	Parts No.	Name of Parts	Page	Ref.No.
DBS-DA0224	Bushing (L) For E-1	19	E-4	DSC-BF0037	Screw (9/32"n=28)	9	B-10	DSC-FG0019	Feed Link Connecting Screw (A)	15	D-32
DBS-DA0231	Lower Shaft Front Bushing	25	H-33	DSC-BF0038	Screw (9/64"n=40)	19	E-9	DSC-FG0020	Roller Stud Screw	19	E-18
DBS-DB0061	Upper Shaft Front Bushing	9	B-17	DSC-BF0115	Screw (9/32"n=28)	9	B-11	DSC-HA0004	Press Adjusting Screw	25	H-14
DBS-DB0062	Front Bushing For C-21	11	C-22	DSC-BF0154	Screw (9/64"n=40)	25	H-27	DSC-HA0006	Sub Press Adjusting Screw	25	H-13
DBS-DB0063	Rear Bushing For C-21	11	C-24	DSC-BG0002	Screw (5/16"n=24)	9	B-28	DSC-HB0023	Pivot Screw (3/16"n=28)	19	E-28
DBS-DB0067	Bushing For C-16	11	C-17	DSC-BH0005	Screw (11/64"n=40)	23	G-18-5	DSC-HU0001	Screw For G-20	23	G-21
DBS-DB0069	Upper Shaft Rear Bushing	9	B-23	DSC-BH0005	Screw (11/64"n=40)	25	H-22	DSC-HY0003	Bolt For Binder	25	H-37
DCL-AA0072	Collar For Upper Shaft	9	B-31	DSC-BJ0002	Screw (11/64"n=40)	7	A-45	DSN-AA0005	Nut(1/4"n=40)	11	C-20
DCL-AA0073	Feed Lifting Collar	17	D-61	DSC-BJ0003	Screw (9/64"n=40)	7	A-48	DSN-AA0005	Nut(1/4"n=40)	11	C-27
DCL-AA0074	Feed Rock Shaft Collar	15	D-49	DSC-BJ0003	Screw (9/64"n=40)	11	C-7	DSN-AA0006	Nut (3/16"n=32)	15	D-45
DCL-AA0075	Collar For Lower Shaft	15	D-8	DSC-BJ0003	Screw (9/64"n=40)	15	D-57	DSN-AA0007	Nut (15/64"n=28)	7	A-11
DCL-BB00240	Link Cam Stopper Ring	9	B-16	DSC-BJ0004	Screw (11/64"n=40)	21	F-2	DSN-AA0022	Nut(9/32"n=28)	15	D-33
DGR-AD0002	Upright Shaft Upper Gear	9	B-40	DSC-BJ0004	Screw (11/64"n=40)	25	H-24	DSN-CC0005	Nut For H-13	25	H-15
DGR-AD0003	Upright Shaft Lower Gear	9	B-42	DSC-BJ0006	Screw (15/64"n=28)	11	C-53	DSN-CY0010	Nut For Binder	25	H-38
DGR-AD0004	Lower Shaft Gear	15	D-10	DSC-BJ0006	Screw (15/64"n=28)	15	D-27	DSN-CZ0009	Nut For Feed Regulator	15	D-38
DGR-AD0009	Upper Shaft Gear	9	B-33	DSC-BJ0006	Screw (15/64"n=28)	15	D-30	DSP-AA0064	Spring For Feed Regulator	15	D-40
DPK-AZ0010	Gear Case Retainer	21	F-24	DSC-BJ0006	Screw (15/64"n=28)	15	D-52	DSP-AA0089	Sub Spring For H-10	25	H-17
DPK-CB0011	Rubber Cap	7	A-22	DSC-BJ0011	Screw (9/64"n=40)	7	A-50	DSP-AA0094	Walking Foot Pressure Spring	11	C-38
DPK-CY0013	Rubber Cap (φ6.3)	21	F-5	DSC-BJ0011	Screw (9/64"n=40)	21	F-15	DSP-AA0095	Return Spring For E-10	19	E-11
DPL-AA0011	Pulley	9	B-26	DSC-BJ0013	Screw (9/64"n=40)	7	A-36	DSP-AA0117	Adjusting Spring For H-10	25	H-16
DPN-AA0088	Needle Bar Crank Shaft	9	B-12	DSC-BJ0013	Screw (9/64"n=40)	17	D-59	DSP-AB0044	Feed Regulator Return Spring	15	D-43
DPN-AA0132	Hinge Pin For B-1	9	B-2	DSC-BJ0016	Screw (3/32"n=56)	7	A-20	DSP-AC0051	Return Spring For G-17-4	23	G-17-9
DPN-AB0003	Pin For C-49	11	C-50	DSC-BJ0020	Screw For C-10	11	C-11	DSP-AC0060	Return Spring For E-29	19	E-31
DPN-AD0085	Hinge Pin For C-40	11	C-41	DSC-BJ0022	Screw (3/32"n=56)	11	C-3	DSP-BA0029	Binder-Plate Spring	25	H-25
DSC-AA0003	Screw (15/64"n=28)	19	E-35	DSC-BJ0038	Screw (15/64"n=28)	13	C-58	DWS-AA0011	Washer (φ3.7×t0.8)	19	E-23
DSC-AA0007	Screw (1/4"n=28)	11	C-15	DSC-BJ0043	Screw (9/64"n=40)	11	C-5	DWS-AA0022	Washer For G-12	23	G-14
DSC-AD0001	Bolt For A-27	7	A-29	DSC-BJ0053	Screw (A) For C-44	11	C-45	DWS-AA0063	Washer For C-16	11	C-19
DSC-BA0001	Screw (9/64"n=40)	23	G-18-2	DSC-CA0005	Screw (1/4"n=40)	9	B-30	DWS-AA0095	Washer For C-34	11	C-36
DSC-BA0001	Screw (9/64"n=40)	23	G-18-3	DSC-CA0005	Screw (1/4"n=40)	9	B-32	DWS-AA0154	Washer For A-27	7	A-30
DSC-BA0003	Screw (11/64"n=40)	25	H-40	DSC-CA0005	Screw (1/4"n=40)	9	B-34	DWS-AA0173	Washer For H-22	25	H-26
DSC-BA0007	Screw (9/64"n=40)	21	F-28	DSC-CA0005	Screw (1/4"n=40)	9	B-41	DWS-CB0006	Washer For A-3	7	A-4
DSC-BA0009	Screw (9/64"n=40)	7	A-5	DSC-CA0005	Screw (1/4"n=40)	9	B-43	DWS-CB0008	Washer For D-28	15	D-29
DSC-BA0009	Screw (9/64"n=40)	7	A-7	DSC-CA0006	Screw (11/64"n=40)	15	D-50	PBR-AD0002	Ball For Feed Regulator	15	D-39
DSC-BA0009	Screw (9/64"n=40)	7	A-39	DSC-CA0006	Screw (11/64"n=40)	17	D-62	PBR-BA0028	Needle Bearing	11	C-12
DSC-BA0009	Screw (9/64"n=40)	7	A-41	DSC-CA0008	Screw (15/64"n=28)	9	B-4	PPN-AD0001	Pin for A-46	7	A-47
DSC-BA0009	Screw (9/64"n=40)	21	F-11	DSC-CA0008	Screw (15/64"n=28)	9	B-18	PPN-AF0029	Pipe For D-5	21	F-30
DSC-BA0009	Screw (9/64"n=40)	21	F-18	DSC-CA0008	Screw (15/64"n=28)	9	B-21	PSC-AC0015	Screw For A-31	7	A-32
DSC-BA0010	Screw (11/64"n=40)	11	C-33	DSC-CA0008	Screw (15/64"n=28)	9	B-24	PSC-AC0053	Screw(M8×1.25)	7	A-24
DSC-BA0011	Screw (11/64"n=40)	11	C-46	DSC-CA0008	Screw (15/64"n=28)	9	B-37	PSC-DD0001	Knee Lifting Chain (Ass'y)	23	G-17-1
DSC-BA0016	Screw (3/16"n=28)	19	E-17	DSC-CA0008	Screw (15/64"n=28)	9	B-39	PSC-DD0001	Screw For G-17	23	G-17-11
DSC-BA0018	Screw (9/64"n=40)	21	F-23	DSC-CA0008	Screw (15/64"n=28)	11	C-43	PSC-DD0001	Screw For H-35	25	H-36
DSC-BA0026	Screw (1/8"n=44)	25	H-21	DSC-CA0008	Screw (15/64"n=28)	15	D-6	PSN-AA0006	Nut (M6×1.0)	23	G-13
DSC-BB0008	Screw (9/64"n=40)	25	H-4	DSC-CA0008	Screw (15/64"n=28)	19	E-5	PSR-AA0014	Feed Cam (A) Stop Ring (φ22)	15	D-17
DSC-BB0020	Screw (9/64"n=40)	7	A-34	DSC-CA0008	Screw (15/64"n=28)	25	H-12	PSR-AC0009	E-Ring (φ7)	11	C-56
DSC-BB0020	Screw (9/64"n=40)	7	A-43	DSC-CA0011	Screw (1/4"n=40)	9	B-14	PSR-AC0009	E-Ring (φ7)	15	D-54
DSC-BB0044	Screw (M6×1.0)	23	G-12	DSC-CA001	Screw (1/4"n=40)	9	B-15	PSR-AC0009	E-Ring (φ7)	17	D-66
DSC-BC0007	Screw (9/64"n=40)	7	A-14	DSC-CA0019	Screw (1/4"n=40)	15	D-18	PTL-AB0003	L-Wrench (2.5mm)	23	G-7
DSC-BC0007	Screw (9/64"n=40)	7	A-16	DSC-CA0019	Screw (1/4"n=40)	15	D-20	PTL-AB0005	L-Wrench (3mm)	23	G-8
DSC-BC0007	Screw (9/64"n=40)	7	A-18	DSC-CA0040	Screw (15/64"n=28)	15	D-9	PTL-BA0001	Driver (L)	23	G-2
DSC-BC0008	Screw (3/16"n=28)	19	E-26	DSC-CB0005	Screw (15/64"n=28)	25	H-29	PTL-BA0002	Driver (M, S)	23	G-3
DSC-BC0010	Screw (11/64"n=40)	25	H-6	DSC-CB0007	Screw (M5)	15	D-42	SF-0109-8011	Felt	21	F-12
DSC-BF0004	Screw (15/64"n=28)	13	C-59	DSC-CB0009	Screw (15/64"n=28)	15	D-3	-	Needle	11	C-4
DSC-BF0005	Screw (11/64"n=40)	11	C-35	DSC-CB0011	Screw (1/4"n=40)	15	D-11	-	Needle	23	G-5
DSC-BF0008	Screw (15/64"n=28)	9	B-27	DSC-FA0172	Screw (Upper) For A-2	7	A-3				
DSC-BF0011	Screw (3/16"n=28)	15	D-47	DSC-FA0174	Stud Screw For G-23	23	G-24				
DSC-BF0026	Screw (3/16"n=32)	15	D-36	DSC-FD0003	Hinge Screw For A-27	7	A-28				
DSC-BF0029	Screw (15/64"n=28)	17	D-64	DSC-FD0014	Pivot Screw (1/4"n=28)	19	E-30				
DSC-BF0031	Screw (11/64"n=40)	19	E-7	DSC-FF0019	Stud Screw For Connection Link	11	C-26				
DSC-BF0031	Screw (11/64"n=40)	19	E-15	DSC-FF0020	Feed Link Connecting Lever Shaft	15	D-34				
DSC-BF0031	Screw (11/64"n=40)	19	E-24	DSC-FG0018	Feed Lifting Shaft Crank Stud	17	D-65				
DSC-BF0035	Screw (5/16"n=28)	11	C-39	DSC-FG0018	Feed Rock Shaft Crank Stud	15	D-53				
DSC-BF0036	Screw (11/64"n=40)	7	A-9	DSC-FG0018	Stud Screw For C-54	11	C-55				