



PARTS BOOK

KM-380/B

High Speed, Cylinder Bed, 1-Needle,
Unison Feed Lock Stitch Machine
W/Binder

실린더 베드형 고속 1본침 본봉
총합송/바인더 부착형 재봉기

PME-131125

Information

A. Parts Book 구성

Structure of Part Book

① **A** Arm, Bed & Machine Body Mechanism
팔, 침대 및 의장품 관계

②

③

④ ⑤ ⑥ ⑦ ⑧ ⑨

Ref. No.	Parts No.	Note	Name of Parts	품명	Q'ty	Assembly No.
A-1	01-12841-03		Arm	어ーム	1	
A-2	01-10073-06		Bed	침대	1	
A-4	01-02120-00		Face Plate	면판	1	
A-5	01-02044-12H		Face Plate Gasket	면판 가스켓	1	
A-6	01-1174-4122		Screw(L)104*mm2	볼트	10	
A-7	01-11011-123D		Rubber Cap For Face Plate	면판 고무뚜껑	2	
A-9	01-00194-123D		Caution Sscrew	경고 스크류	1	
A-8	01-011973-00		Thermap Layer Cover	보온층 피막	1	
A-10	01-02020-00		Screw(S)104*mm2	볼트(S)104*mm2	1	
A-11	01-01746-00		Bed Cover(L)	침대 커버(좌)	1	
A-12	01-01441-123H		Bed Cover Gasket(L)	침대 커버 가스켓(좌)	1	
A-13	01-02643-123D		Screw(L)104*mm2	볼트(S)104*mm2	14	
A-13-1	45-0244-1002		Washer	와셔	2	
A-14	01-01752-00		Bed Cover(S)	침대 커버(우)	1	
A-15	01-01744-123H		Bed Cover Gasket(S)	침대 커버 가스켓(우)	1	
A-16	440211-100H		3-Tank Rubber Cap	3탱크 고무뚜껑	1	
A-17	01-02074-123D		Thread Guide with Three Poles	세극을 달인 가이드	15Set	
A-19	01-02031-123D		Thread Guide(L)	면판 실링(좌)	1	
A-20	01-02032-123D		Thread Guide(R)	면판 실링(우)	3	
A-21	01-01000-123D		Thread Guide(S)	면판 실링	1	
A-22	01-01643-00		Arm Thread Guide Assy	어ーム 실링 가이드 어셈블리	1	
A-23	11-01751-752D		Nut	너트	1	
A-24	01-02031-123H		Thread Guide(L)	실링 가이드(좌)	1	
A-25	0102032-100H		3-Tank Assy	3탱크 고무 뚜껑 어셈블리	15Set	
A-26	0102033-100H		3-Tank Tank	실링 고무 탱크	1	
A-27	0102036-100H		3-Tank Window	실링 고무 창	1	
A-28	0102401-100H		3-Tank Part	실링 고무 탱크 부품	1	
A-29	01-01953-00		Part for 3-Tank Oil Supply	실링 고무 탱크 유공 부품	1	
A-30	01-01954-00		Screw(L)104*mm2	볼트(S)	1	
A-31	04-12411-123D		Arm Upper Part Rubber Cap	어ーム 상부 고무 뚜껑	2	
A-33	04-02031-123H		Needle Bar Rubber Cap	바늘봉 고무 뚜껑	4	
A-34	01-04210-142L		Rubber Cap(L)	고무뚜껑(좌)	4	
A-35	44-02111-742D		Rubber Cap(S)	고무뚜껑(우)	7	
A-36	01-01751-123H		Bed Rubber	침대 고무	1	
A-37	01-019817-00		Welder (Sticker)(H)	인쇄 스티커-수용용	1	
A-38	01-019818-00		M Welder (Sticker)(M)	인쇄 스티커-일반용	1	
A-39	01-019819-00		L Welder (Sticker)(L)	인쇄 스티커-대형용	1	
A-40	01-019820-00		K Welder (Sticker)(K)	인쇄 스티커-대형용	1	
A-41	01-02110-123D		Tap Cover	타프 커버	2	
A-42	01-02114-123H		Tap Cover	타프 커버	1	
A-43	41-0114-123H		Sobbin Winder Assy	실링기(좌)	15Set	
A-44	41-02011-123H		Sobbin Winder (Base Assy)	실링기 베이스 어셈블리	1	
A-45	41-0205A-123H		Sobbin Winder (Shaft)	실링기 구동축	1	
A-46	01-02051-00		Screw(S)	볼트(S)	1	
A-47	01-02052-750D		Screw(S)	볼트(S)	1	
A-48	41-02051-123H		Sobbin Winder	실링기 체결리	1	
A-49	01-0104-550T		Screw(L)104*mm2	볼트(S)	2	
A-50	41-02051-123H		Sobbin Winder Action Ring	실링기 체결링	1	
A-51	41-02051-123H		Sobbin Winder Shaft Rubber Ring	실링기 구동축 고무링	1	
A-52	41-02051-123H		Sobbin Winder Spline	실링기 피치	1	
A-53	41-02051-123H		Sobbin Winder Adjusting Plate	실링기 조정판	1	
A-54	01-01130-123D		Screw(L)104*mm2	볼트(S)	1	
A-55	01-01194-123D		Washer	와셔	1	
A-56	41-02051-123H		Sobbin Winder Lower Shaft	실링기 하부 축	1	
A-57	41-02051-123H		Sobbin Winder Adjusting Term	실링기 조정 탭	1	
A-58	01-01130-123D		Screw(L)104*mm2	볼트(S)	1	

Note: P=Heavy Material(중량재), M=Medium Material(일반재), M-A=Pneumatic Heavy Material(공압식 중량재)
L=Light Material(저중량), K=Roll Material(롤재), EL=Large Shutter Model(대 셔터 모델)

①: 관계 별 고유 코드

Unique code by mechanism

②: 관계 별 고유 명칭

Unique name by mechanism

③: 관계도

Explode view

④ Ref.No.: 파트별 고유 식별 번호

Unique identification number by part

⑤ Parts No.: 고유 제품 코드

Unique Product code

Ex)

구분 Category	Code	비고 remarks
구 부품 Old part	01-030C-1230	
신 부품 New Part	AS-000000-00	조(조) 파트 Set parts
	GP-000000-00	기구적 파트 Instrumental parts
	EP-000000-00	전기적 파트 Electrical parts

⑥ Note: 공지사항 표기 및 메모

Refers to notice and memo

⑦ 품

명: 파트의 고유 품명

Name of Part: Unique name of parts

⑧ Q'ty : 파트의 수량

The number of parts

⑨ Assembly no.: 조(조) 파트의 식별 번호

Unique identification number by set part

Warning

1. 조에 속한 파트는 개별 조립 시 제품의 파손 또는 재봉 불량 발생될 수 있어 해당 파트에 대한 주문 시에는 조 품목으로만 구입이 가능합니다.
2. 본 책자는 Parts Book으로 제작되었으므로 매뉴얼로 사용 불가합니다.
3. 사전 예고 없이 사양이 변경 될 수도 있습니다.

1. The parts classified as ass'y items may cause damage to the machine or bad sewing when they are separately assembled. Hence, when they are ordered, they can be purchased as ass'y items only.
2. This is a parts book. It cannot be used as a manual.
3. Parts are Subject to change in Design Without Prior Notice.

Note

- 썬스타 제품의 부품은 아래 인터넷주소로 접속하시어 신청할 수 있습니다.
<http://www.sunstarcs.com>
- 가입된 회원께서는 썬스타 포탈 사이트에 로그인후 필요한 부품을 신청할 수 있습니다.
- 부품관리-발주관리-발주등록 항목에서 부품번호와 신청수량을 입력하여 등록하시면 발주가 됩니다.
- 부품번호를 모르시는 경우 파츠북 조회를 클릭하시고 사용하는 기종을 검색하여 선택하시면 해당 기종의 파츠북을 조회할 수 있습니다.
- 파츠북은 관계별로 구분되어 있으며 관계를 알고 있다면 부품 찾기가 용이합니다.
- You can make an order for the parts of Sunstar machine to connect internet address.
<http://www.sunstarcs.com>
- You can request for parts you want after login if you are a registered member.
- In parts Management - Order Management - Order Registration entry, you can place an order by entering the part number and quantity.
- If you don't know the parts number, click the parts book menu bar.
In a download list, you can read parts book by searching model you use.
- This parts book is classified by the mechanism, therefore you can find part easily.

CONTENTS

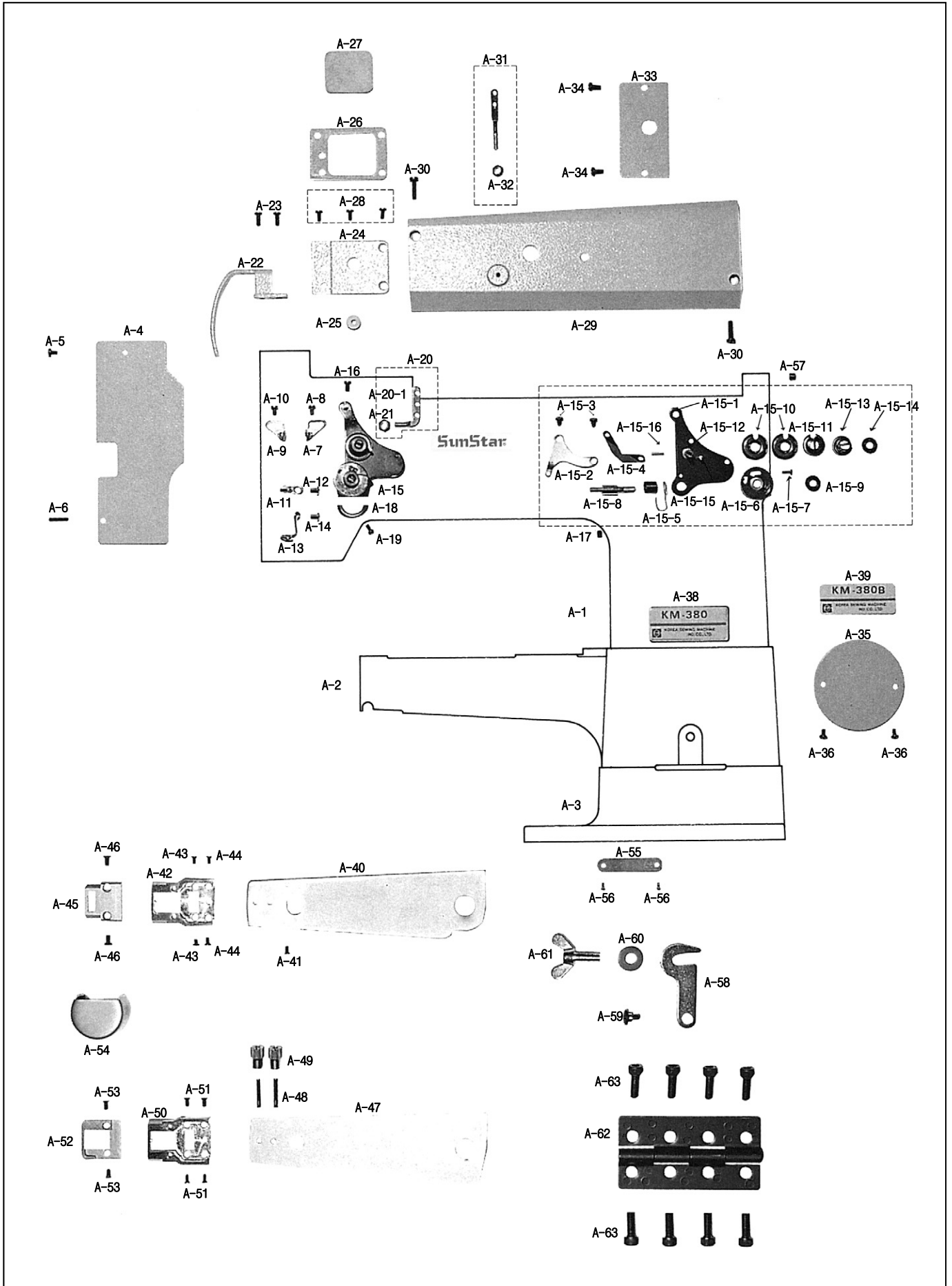
목 차

A	Machine Body & Thread Tension Adjusting Mechanism 외장 및 실장력 조절 관계	6
B	Upper Shaft & Needle Bar & Upright Shaft & Lower Shaft Mechanism 상축 & 바늘대 및 입축 & 하축 관계	10
C	Presser Bar & Upper Feed & Knee Lifting Mechanism 누름대, 상피이드 및 무릎올림 관계	14
D	Lower Feed Mechanism 하피이드 관계	18
E	Lubrication Mechanism 급유 관계	22
F	Accessories Mechanism 액세서리 관계	24
G	Tag a Sleeve Device Mechanism 소매달이 장치 관계	28
	Index 인덱스	30

A

Machine Body & Thread Tension Adjusting Mechanism

외장 & 실장력 조절 관계





Ref. No.	Parts No.	Note	Name of Parts	품 명	Q'ty	Applied Period
A-1	GP-017923-00		Arm	암	1	
A-2	GP-035167-00		Cylindrical Bed	베드	1	
A-3	01-004A-380A		Base	베이스	1	
A-4	01-011A-3800		Face Plate	면판	1	
A-5	SC-0365-3710		Screw (9/64"n=40)	홀볼이 냄비 작은나사(9/64"n=40)	1	
A-6	01-030C-3800		Lock Pin For Face Plate	면판 고정핀	1	
A-7	01-024A-3800		Arm Thread Guide (A)	암실안내(A)	1	
A-8	SC-0120-1230		Screw (9/64"n=40)	오일펌프카바나사(9/64"n=40)	1	
A-9	01-025A-3800		Arm Thread Guide (B)	암실안내(B)	1	
A-10	SC-0120-1230		Screw (9/64"n=40)	오일펌프카바나사(9/64"n=40)	1	
A-11	01-026A-3800		Arm Thread Guide (C)	암실안내(C)	1	
A-12	SC-0120-1230		Screw (9/64"n=40)	오일펌프카바나사(9/64"n=40)	1	
A-13	01-027A-3800		Arm Thread Guide (D)	암실안내(D)	1	
A-14	SC-0120-1230		Screw (9/64"n=40)	오일펌프카바나사(9/64"n=40)	1	
A-15	40-001A-3800		Thread Tension Adjusting Equipment Ass'y	실조절 장치	1Set	
A-15-1	40-101A-3800		Lower Plate For A-15	실조절 장치 몸체	1	
A-15-2	40-104A-3800		Thread Tension Release Plate	실조절 장치 잡이판	1	
A-15-3	40-103S-3800		Set Screw For A-15-2	실조절 장치 체결나사	2	
A-15-4	40-102A-3800		Spring For A-15-2	실조절 장치 스프링	1	
A-15-5	40-111G-3800		Thread Take-Up Lever Spring	뽕뽕 스프링(KM-380)	1	
A-15-6	40-105A-3800		Guide For A-15-5	실조절 받침	1	
A-15-7	40-106A-3800		Stopper Screw A-15-6	실조절 받침 체결나사	1	
A-15-8	40-111A-3800		Thread Adjusting Equipment Shaft	실조절 장치 축(대)	1	
A-15-9	40-108A-3800		Nut For A-15-8	실조절 장치 조절너트	1	
A-15-10	40-109A-3800		Disc For Thread Guide	실조절 접시	2	
A-15-11	40-110A-3800		Pushing Plate For A-15-10	실조절 스프링 받침	1	
A-15-12	40-107A-3800		Adjusting Shaft For Thread Tension	실조절 장치 축(소)	1	
A-15-13	40-333G-3800		Adjusting Spring For Thread Tension	소라 스프링(KM-380)	1	
A-15-14	40-108A-3800		Nut For A-15-12	실조절 장치 조절너트	1	
A-15-15	40-112A-3800		Stopper Pin For A-15-10	실조절 고정핀(1)	1	
A-15-16	40-113A-3800		Pin For A-15-1	실조절 고정핀(2)	1	
A-16	SC-0175-1230		Screw (11/64"n=40)	실채기카바나사(11/64"n=40)	1	
A-17	SC-0352-7400		Screw (3/16"n=28)	가마축붓싱첩나사(3/16"n=28)	1	
A-18	01-019C-7400		Stopper For A-15-15	실조절 장치 스토퍼	1	
A-19	SC-0502-2302		Screw (9/64"n=40)	윗뚜껍 고정판 고정나사(대) (11/64"n=40)	1	
A-20	01-027A-1230		Three Hole Thread Guide Eyelet	세구멍 실걸이(조)	1	
A-20-1	01-015A-1230		Three Hole Thread Guide Eyelet	세구멍 실걸이	1	
A-21	01-027C-1230		Nut For A-20	세구멍 실걸이 너트	1	
A-22	01-119A-3800		Cover For Take-Up Lever	실채기 커버	1	
A-23	SC-0179-3710		Screw (11/64"n=40)	윗뚜껍 체결나사(11/64"n=40)	2	
A-24	01-017A-3800		Oil Tank Cover For Thread Take-Up Lever	실채기 급유 탱크 커버	1	
A-25	01-007R-8130		Oil Tank Plug For Thread Take-Up Lever	고무 마개(Hole)	1	
A-26	01-018M-3800		Oil Tank Packing For Thread Take-Up Lever	실채기 급유 탱크 패킹	1	
A-27	44-008M-3800		Oil Tank Felt For Thread Take-Up Lever	실채기 급유 felt	1	
A-28	SC-0175-1230		Screw (11/64"n=40)	실채기카바나사(11/64"n=40)	3	
A-29	01-016A-3800		Top Cover	윗뚜껍	1	
A-30	SC-0498-3710		Screw (11/64"n=40)	가마잡이나사(11/64"n=40)	2	
A-31	01-116A-2350		Upper Thread Guide Pin	실안내봉	1	
A-32	01-127C-1230		Set Screw For A-31	세구멍 실걸이 너트	1	
A-33	01-012A-3800		Rear Cover	뒷 뚜껍	1	
A-34	SC-0365-3710		Screw (3/16"n=32)	면판축면카바나사(하) (3/16"n=32)	2	
A-35	01-007A-3800		Lower Shaft Cover	하축커버	1	
A-36	SC-0365-3710		Screw (9/64"n=40)	면판축면카바나사(하) (9/64"n=40)	2	
A-38	01-029A-380A	A	Model Mark	모델마크	1	
A-39	01-029M-380B	B	Model Mark	모델마크	1	
A-40	01-013A-380A	A	Bed Cover Ass'y	베드 커버(조)	1	
A-41	SC-0505-3710	A	Screw (9/64"n=40)	면판축면카바나사(상) (9/64"n=40)	1	

NOTE:

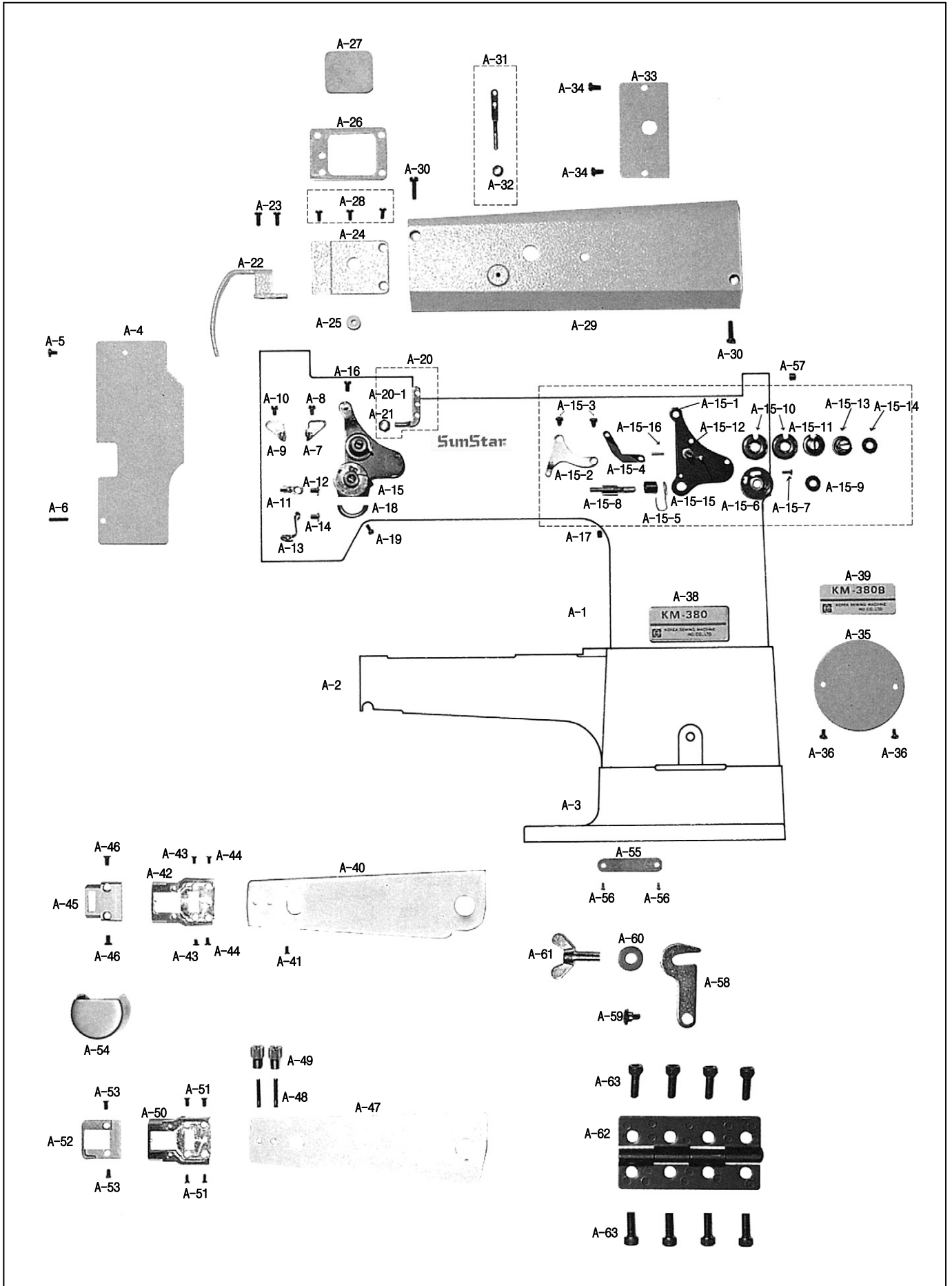
A=KM-380A

B=KM-380B

A

Machine Body & Thread Tension Adjusting Mechanism

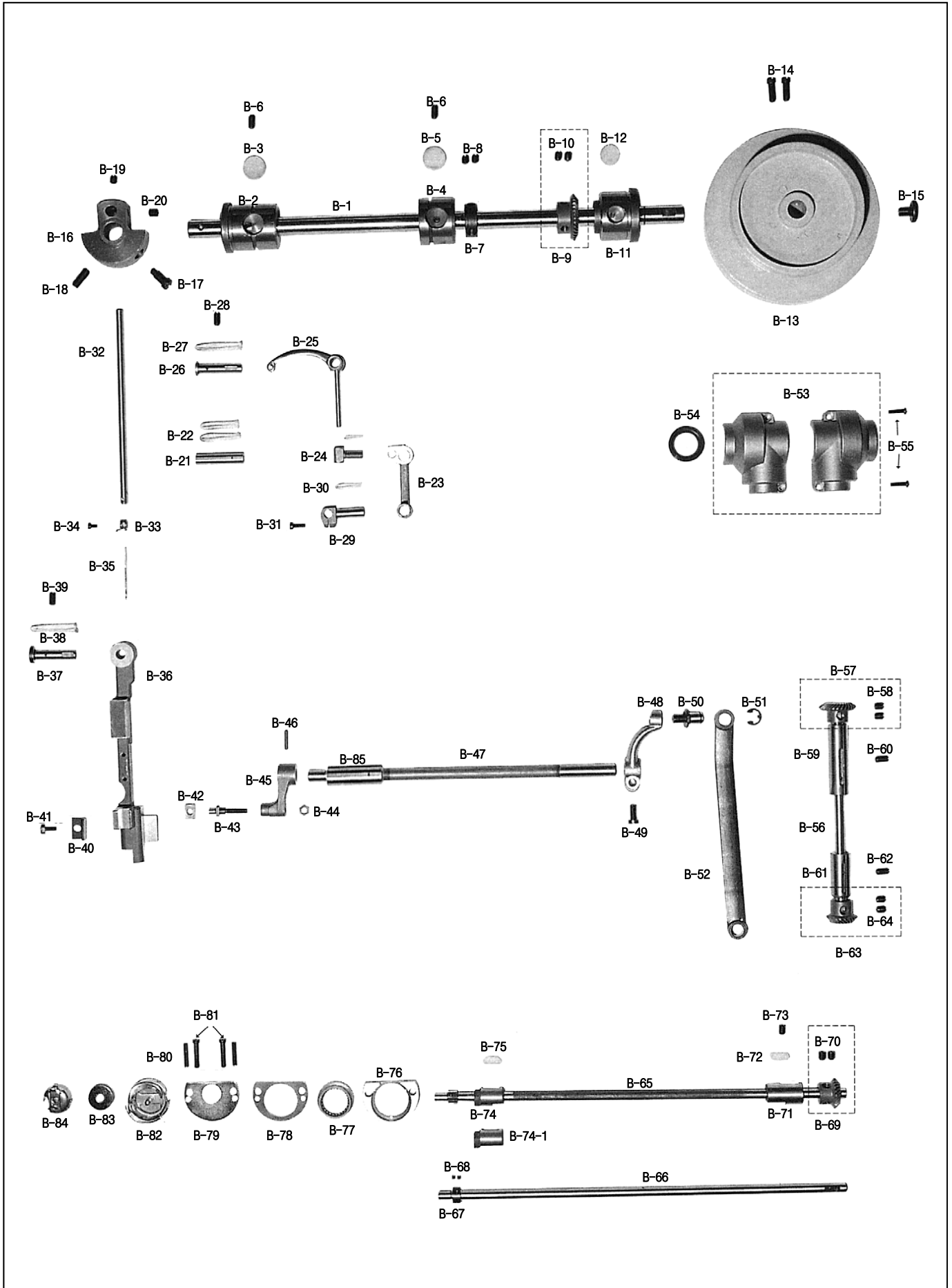
외장 & 실장력 조절 관계



B

Upper Shaft & Needle Bar & Upright Shaft & Lower Shaft Mechanism

상축 & 바늘대 및 입축 & 하축 관계





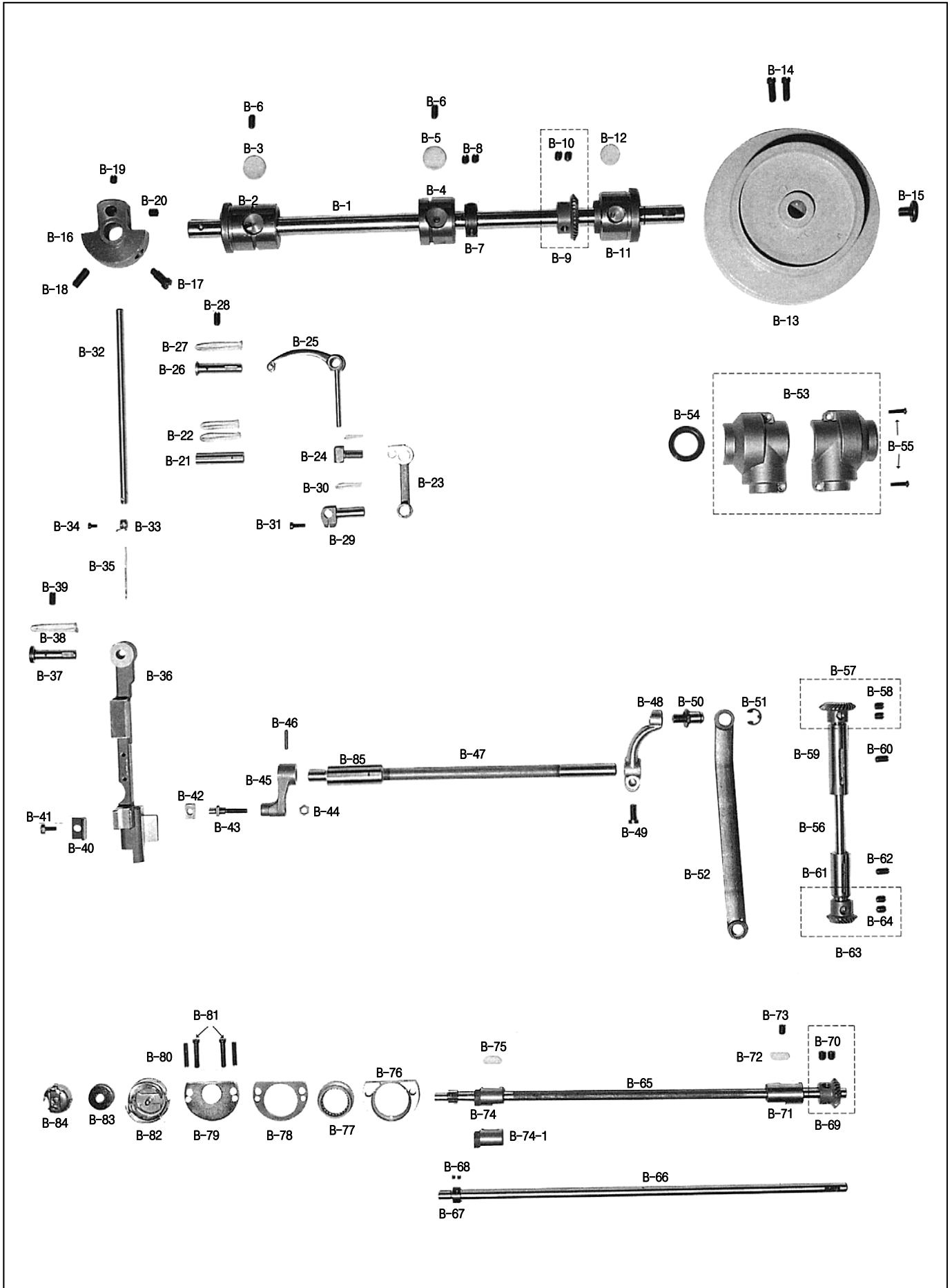
Ref. No.	Parts No.	Note	Name of Parts	품 명	Q'ty	Applied Period
B-1	02-101A-3800		Main Shaft	상축	1	
B-2	02-104A-3800		Front Bushing For B-1	상축 앞 붓싱	1	
B-3	02-009M-7400		Oil Felt For B-2	상축 앞 붓싱 헬트	1	
B-4	02-105A-3800		Center Bushing For B-1	상축 중 붓싱	1	
B-5	02-009M-7400		Oil Felt For B-4	상축 앞 붓싱 헬트	1	
B-6	SC-0507-1230		Screw (15/64"n=28)	상축붓싱고정나사(15/64"n=28)	2	
B-7	02-106A-1230		Main Shaft Collar	상축 카라	1	
B-8	SC-A129-4515		Screw (1/4"n=40)	홈볼이 멈춤나사(1/4"n=40)	2	
B-9	02-211A-1230		Main Shaft Gear	상축기어(국산)	1	
B-10	SC-A129-4515		Screw (1/4"n=40)	홈볼이 멈춤나사(1/4"n=40)	2	
B-11	02-106A-3800		Rear Bushing For B-1	상축 후 붓싱	1	
B-12	44-006M-3800		Oil Felt For B-11	상축 후 붓싱 급유 헬트	1	
B-13	02-006A-3400		Pulley	풀리	1	
B-14	SC-0150-2500		Screw (15/64"n=28)	풀리고정나사(15/64"n=28)	2	
B-15	SC-0188-1230		Screw (5/16"n=24)	풀리큰나사(5/16"n=24)	1	
B-16	CUS-DA002200		Counterweight	링크캠	1	
B-17	SC-0535-3710		Screw (9/32"n=28)	링크캠침나사(대) (9/32"n=28)	1	
B-18	SC-001213-00		Screw (9/32"n=28)	링크캠침나사(B) (9/32"n=28)	1	
B-19	SC-A129-4515		Screw (1/4"n=40)	홈볼이 멈춤나사(1/4"n=40)	1	
B-20	SC-0504-1230		Screw (1/4"n=40)	실채기핀고정나사(1/4"n=40)	1	
B-21	04-105A-3500		Shaft For B-23	바늘대 크랭크 축	1	
B-22	44-0000-1230		Oil Wick	유심	1	
B-23	04-108A-5607		Crank For B-32	바늘대 크랭크	1	
B-24	02-103A-7400		Holder For B-25	실채기 잡이	1	
B-25	GP-043992-00		Thread Take-Up Lever	실채기	1	Mar.11.11
B-26	PN-000184-00		Hinge Pin For B-25	실채기 힌지핀	1	
B-27	44-0000-1230		Oil Wick	유심	1	
B-28	SC-0507-1230		Screw (15/64"n=28)	상축붓싱고정나사(15/64"n=28)	1	
B-29	GP-025258-00		Needle Bar Holder	바늘대 잡이	1	
B-30	44-0000-1230		Oil Wick	유심	2	
B-31	SC-0158-3710		Screw (9/64"n=40)	면판침나사(9/64"n=40)	1	
B-32	04-101A-3800		Needle Bar	바늘대	1	
B-33	04-102A-3800		Thread Guide For B-32	바늘대 실안내	1	
B-34	SC-A131-4522		Screw (1/8"n=44)	홈볼이 납작 작은나사(1/8"n=44)	1	
B-35	-		Needle	바늘	1	
B-36	15-129A-3800		Needle Bar Frame	바늘대 후레임	1	
B-37	15-030P-3800		Hinge Pin For B-36	바늘대 후레임 힌지핀	1	
B-38	44-0000-1230		Oil Wick	유심	1	
B-39	SC-0507-1230		Screw (15/64"n=28)	상축붓싱고정나사(15/64"n=28)	1	
B-40	15-031A-3800		Guide For B-36	바늘대 후레임 안내	1	
B-41	SC-0180-3800		Screw (11/64"n=40)	바늘대 후레임 안내침나사(11/64"n=40)	1	
B-42	GP-034022-00		Block For B-36	바늘대 후레임 블럭	1	
B-43	15-127A-3800		Shaft For B-42	바늘대 후레임 블럭 축	1	
B-44	SN-0115-7400		Nut (3/16"n=32)	오프너 너트(3/16"n=32)	1	
B-45	GP-046517-00		Driving Shaft Crank (Front)	요동축 크랭크(전)	1	Jun.22.11
B-46	15-026P-3800		Fixed Pin For B-45	요동축 크랭크(전) 고정핀	1	
B-47	15-124A-3800		Needle Bar Frame Driving Shaft	바늘대 후레임 요동축	1	
B-48	15-123A-3800		Driving Shaft Crank (Rear)	요동축 크랭크(후)	1	
B-49	SC-0500-7400		Screw (15/64"n=28)	포크침나사(15/64"n=28)	1	
B-50	06-020S-3800		Stud For B-52	수평밀대 크랭크 연결단나사	1	
B-51	06-003C-7400		E-Ring For B-50	피이드 조절기 힌지핀 E링(φ7)	1	
B-52	15-122A-3800		Driving Shaft Connecting Rod	요동축 연결로드	1	
B-53	44-001A-3800		Gear Case Ass'y	기어 케이스(조)	1	
B-54	03-013R-3710		Oil Seal (B)	오일씸(B)	1	
B-55	SC-0528-1230		Screw (9/64"n=40)	카바나사(우) (9/64"n=40)	2	
B-56	03-011A-3800		Upright Shaft	입축	1	
B-57	02-212A-1230		Upright Shaft Upper Gear	입축 상기어(국산)	1	

NOTE:
A=KM-380A
B=KM-380B

B

Upper Shaft & Needle Bar & Upright Shaft & Lower Shaft Mechanism

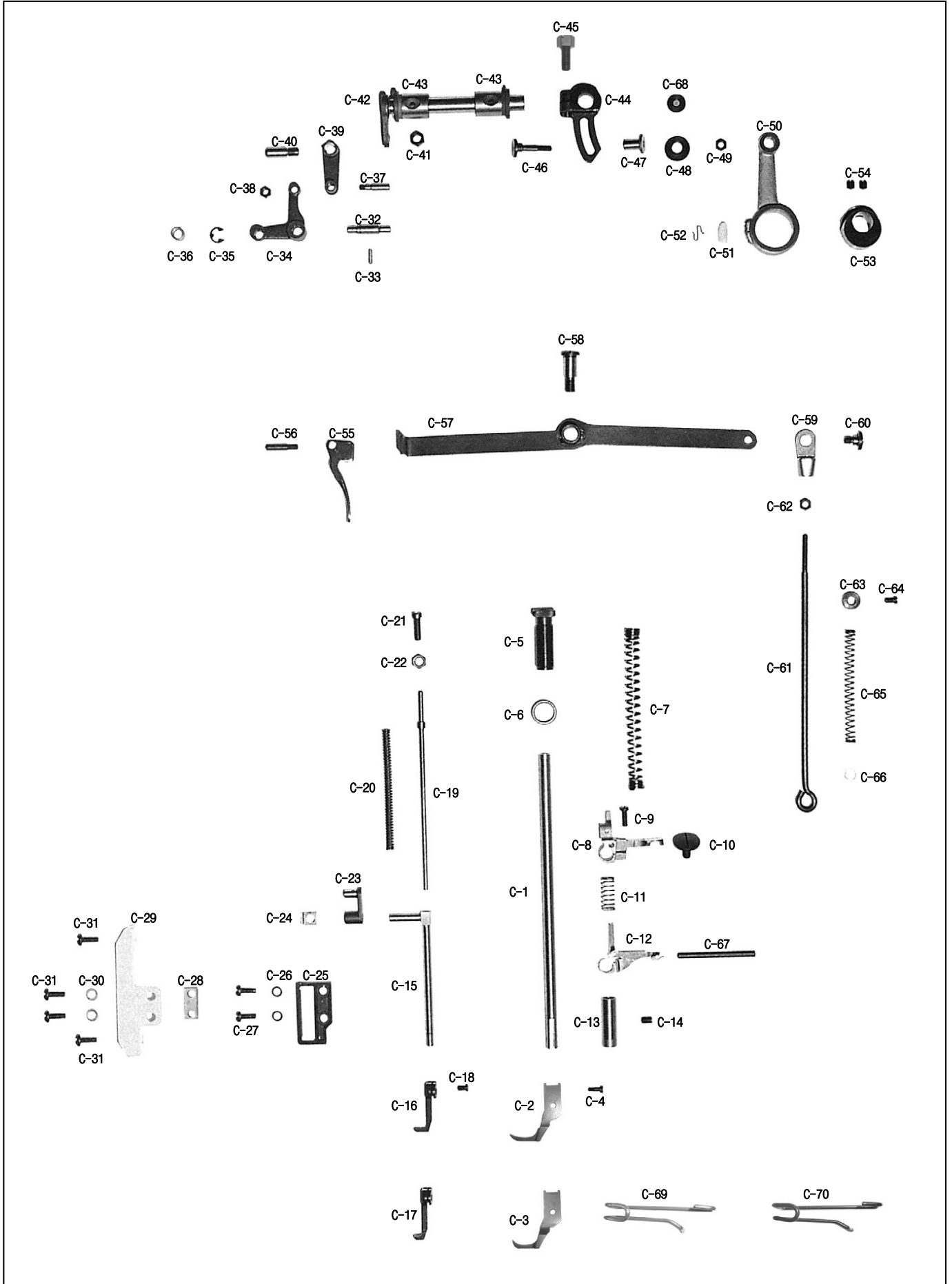
상축 & 바늘대 및 입축 & 하축 관계



C

Presser Bar & Upper Feed & Knee Lifting Mechanism

누름대 & 상피이드 및 무릎올림 관계





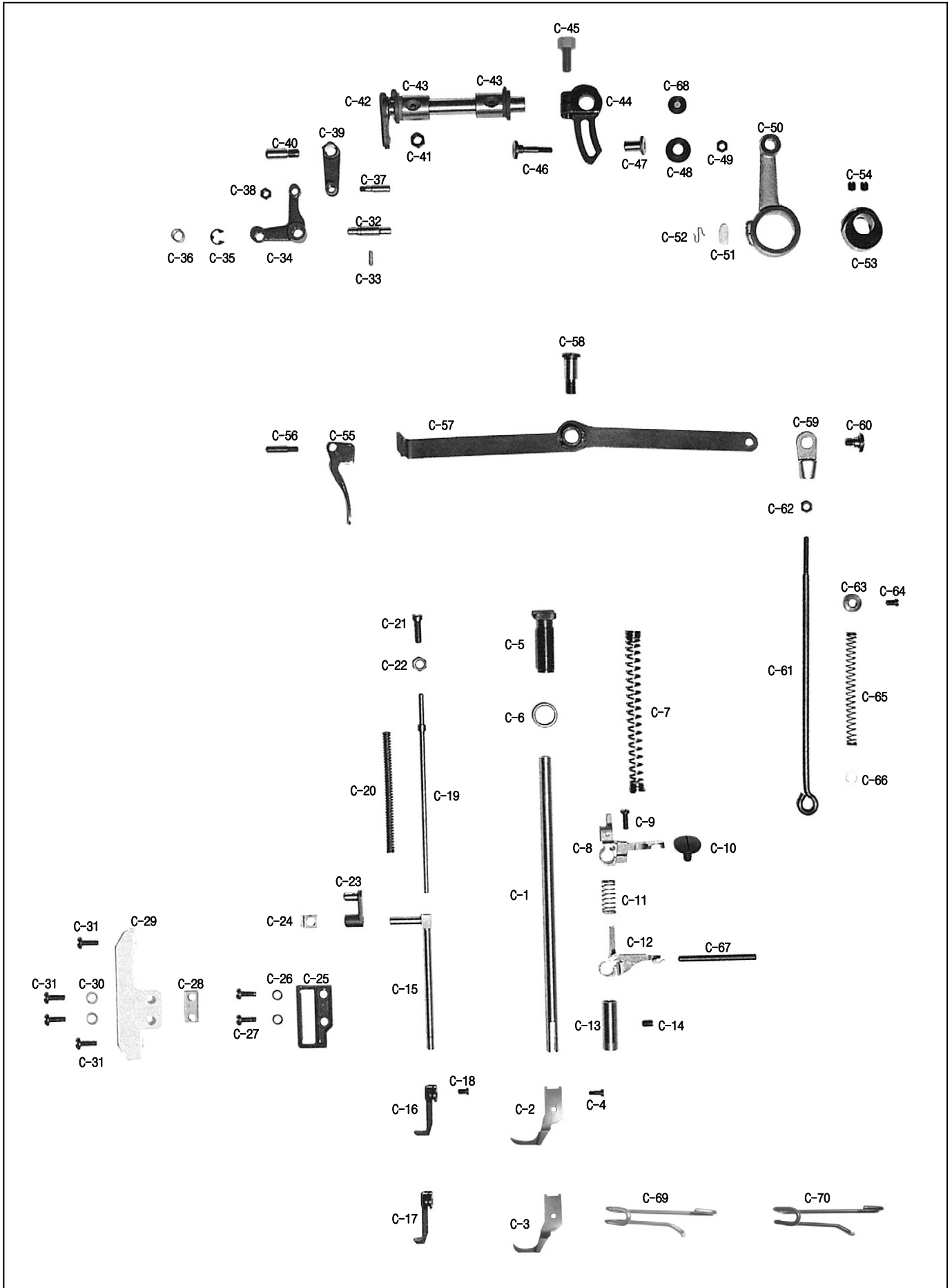
Ref. No.	Parts No.	Note	Name of Parts	품명	Q'ty	Applied Period
C-1	05-302A-3800		Presser Ba	누름대	1	
C-2	05-001A-380A	A	Sub Presser Foot	노루발	1	
C-3	05-001A-380B	B	Sub Presser Foot	노루발	1	
C-4	SC-0315-2302		Screw (9/64"n=40)	노루발침나사(9/64"n=40)	1	
C-5	SC-0367-3400		Screw (9/16"n=20)	압력조절나사(9/16"n=20)	1	
C-6	SN-0100-3400		Nut (9/16"n=20)	압력조절나사너트(9/16"n=20)	1	
C-7	05-004A-3800		Presser Regulation Spring	압력조절 스프링	1	
C-8	05-102A-3800		Presser Bar Bracket	누름대 브라켓	1	
C-9	05-005S-1230		Presser Bar Guide Bracket	누름대 잡이 나사	1	
C-10	05-005S-7400		Hold Stud For C-8	누름대 올리기 단나사	1	
C-11	40-004G-3800		Return Spring For C-12	실늑추기 리턴 스프링	1	
C-12	40-002A-3800		Thread Tension Release Ass'y	실늑추기(조)	1	
C-13	05-109A-3800		Bushing For C-1	누름대 붓심	1	
C-14	SC-0509-1230		Screw (15/64"n=28)	피이드캠고정나사(15/64"n=28)	1	
C-15	15-115A-3800		Upper Feed Presser Bar	상피이드 노루발대	1	
C-16	15-133A-380A	A	Upper Feed Presser Foot	상피이드 노루발	1	
C-17	15-133A-380B	B	Upper Feed Presser Foot	상피이드 노루발	1	
C-18	SC-0128-7400		Screw (11/64"n=40)	인봉카라침나사(11/64"n=40)	1	
C-19	15-018A-3800		Pressure Adjusting Pole Ass'y	상피이드 노루발 압력봉	1	
C-20	15-019G-3800		Pressure Spring For C-16	상피이드 노루발 압력 스프링	1	
C-21	SC-0343-3800		Screw (15/64"n=28)	상피이드 노루발압력 조절나사(15/64"n=28)	1	
C-22	SN-0105-3400		Nut (15/64"n=28)	수평운동 롯드단나사너트(15/64"n=28)	1	
C-23	15-114A-3800		Driving Link For C-16	상피이드 운동링크	1	
C-24	15-117A-3800		Guide Block For C-15	상피이드 노루발 안내블럭	1	
C-25	15-123A-5607		Guide Plate For C-15	노루발대 안내판(K2555)	1	
C-26	01-017W-1600		Washer For C-27	뒷뚜껑 침와셔	2	
C-27	SC-0174-1230		Screw (11/64"n=40)	가마잡이나사(11/64"n=40)	2	
C-28	05-006A-3800		Guide For C-34	로울러 안내	1	
C-29	05-008C-3800		Roller Guide Frame	로울러 안내 후레임	1	
C-30	01-023C-3710		Washer For C-29	와셔(φ5)	2	
C-31	SC-0307-1230		Screw (3/16"n=32)	톱니받침 크랭크침나사(3/16"n=32)	4	
C-32	05-103A-3800		Roller Shaft For C-8	누름대 브라켓 로울러 축	1	
C-33	05-004P-3800		Fixed Pin For Roller Shaft	로울러축 고정핀	1	
C-34	15-112A-3800		Connecting Link For C-16	상피이드 노루발 연결링크	1	
C-35	06-020C-7400		E-Ring (φ6)	E링(φ6)	1	
C-36	05-005A-3800		Roller For C-8	누름대 브라켓 로울러	1	
C-37	15-013A-3800		Shaft For C-34	상피이드 노루발 연결 링크축	1	
C-38	SN-0101-1600		Nut (11/64"n=40)	스프링걸이 축나사너트(11/64"n=40)	1	
C-39	15-110A-3800		Upper Feed Connecting Link	상피이드 연결링크	1	
C-40	15-011S-3800		Stud For C-39	상피이드 연결링크축 나사	1	
C-41	SN-0116-3400		Nut (1/4"n=40)	수평운동조절 축너트(1/4"n=40)	1	
C-42	GP-010500-00		Upper Feed Driving Shaft	상하 운동축	1	
C-43	15-109A-3800		Bushing For C-42	상하 운동축 붓심	2	
C-44	15-203A-3800		Upper Feed Lifting Adjusting Crank	상하 운동 크랭크	1	
C-45	SC-0140-5607		Screw (1/4"n=24)	상하운동 크랭크침나사(1/4"n=24)	1	
C-46	15-007A-5607		Upper Feed Lifting Adjusting Shaft	상하 운동 조절축	1	
C-47	15-206A-3800		Bushing For B-46	상하 운동 조절축 붓심	1	
C-48	11-009A-5607		Washing For C-46	상하 운동 조절축 카라	1	
C-49	SN-0116-3400		Nut (3/16"n=32)	오프너너트(3/16"n=32)	1	
C-50	15-202A-3800		Rod For C-53	상하 운동 캠 롯드	1	
C-51	44-023M-3400		Oil Felt For C-50	노루발 상하운동 캠 롯드 급유 헬트	1	
C-52	44-015C-3400		Oil Felt Holder For C-51	상하운동 캠 롯드 유심잡이	1	
C-53	15-101A-3800		Upper Feed Lifting Eccentric Cam	상하운동 캠	1	
C-54	SC-A129-4515		Screw (1/4"n=40)	훅볼이 멈춤나사((1/4"n=40)	2	
C-55	05-006A-7400		Presser Bar Lifter	누름대 올리기	1	
C-56	05-009P-3800		Hinge Pin For C-55	누름대 올리기 힌지핀	1	
C-57	43-101A-3800		Knee Lifting Lever	무릎 올림 레버	1	

NOTE:
A=KM-380A
B=KM-380B

C

Presser Bar & Upper Feed & Knee Lifting Mechanism

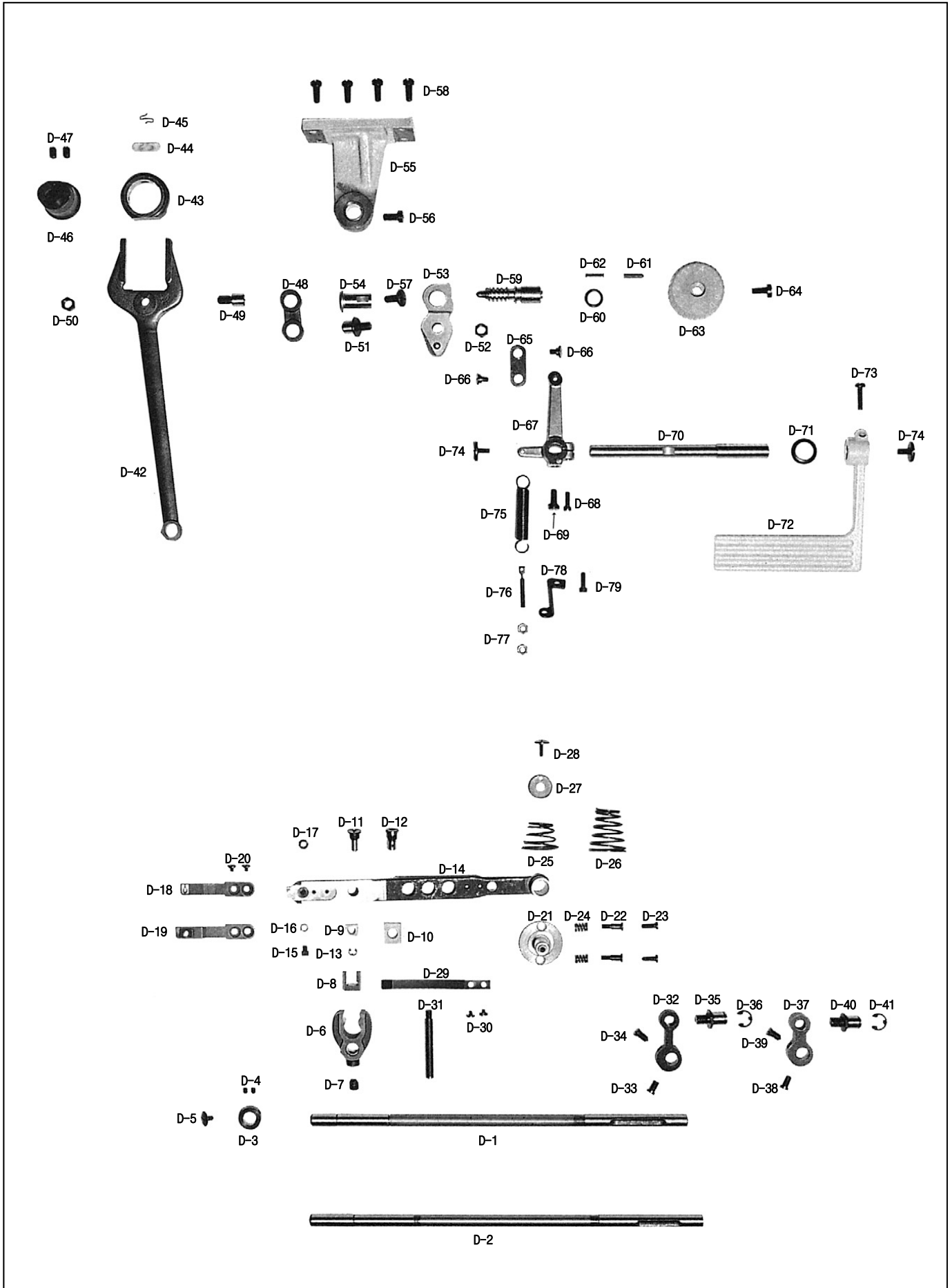
누름대 & 상피이드 및 무릎올림 관계



D

Lower Feed Mechanism

하피이드 관계



Ref. No.	Parts No.	Note	Name of Parts	품 명	Q'ty	Applied Period
D-1	06-116A-380A	A	Feed Locker Shaft	수평밀대	1	
D-2	06-116A-380B	B	Feed Locker Shaft	수평밀대	1	
D-3	06-118A-3800		Collar For D-1	수평밀대 카라	1	
D-4	SC-0104-5607		Screw (11/64"n=40)	하축중베어링보싱고정나사(11/64"n=40)	2	
D-5	SC-0200-3800		Screw (11/64"n=40)	수평밀대고정나사(11/64"n=40)	1	
D-6	06-12CA-3800		Feed Bar Crank	톱니 받침 크랭크	1	
D-7	SC-0201-1230		Screw (5/16"n=24)	상축기름막이고무고정나사(5/16"n=24)	1	
D-8	GP-035918-00		Feed Bar Crank Block	톱니 받침 크랭크 블럭	1	
D-9	06-032A-380A	A	Feed Bar Slide Block(A)	톱니 받침 블럭	1	
D-10	GP-035919-00	B	Feed Bar Slide Block(B)	톱니 받침 블럭	1	
D-11	06-031A-380A	A	Block Stud For D-14	톱니 받침 블럭 축	1	
D-12	06-031A-380B	B	Block Stud For D-14	톱니 받침 블럭 축	1	
D-13	06-033M-3800	A	E-Ring For D-11	톱니 받침 블럭 축 E링(φ3)	1	
D-14	GP-018077-00		Feed Bar	톱니 받침	1	
D-15	06-034C-3800	A	Stopper For D-14	톱니 받침 스토퍼	1	
D-16	06-036W-3800	A	Feed Dog Adjusting Washer	톱니 높이 조절 와셔	1	
D-17	06-035C-3800	A	Nut For D-15	톱니 받침 스토퍼 너트	1	
D-18	06-037A-380A	A	Feed Dog	톱니	1	
D-19	06-037A-380B	B	Feed Dog	톱니	1	
D-20	SC-0138-3800		Screw (1/8"n=44)	톱니침나사(1/8"n=44)	2	
D-21	06-024A-3800		Hinge Stud For D-14	톱니 받침 힌지축	1	
D-22	06-025S-3800	A	Screw For D-21	톱니 받침 힌지축 나사	2	
D-23	SC-0179-3710	B	Screw (11/64"n=40)	윗뚜껑침나사(11/64"n=40)	2	
D-24	06-026G-3800	A	Tension Spring For D-21	톱니 받침 힌지축 텐션 스프링	2	
D-25	01-014G-380A	A	Spring For Bed Cover	베드 커버 스프링	1	
D-26	01-014G-380B	B	Spring For Bed Cover	베드 커버 스프링	1	
D-27	WS-000373-00		Washer For D-21	톱니 받침 힌지축 와셔	1	
D-28	SC-0198-3800		Screw (9/64"n=40)	톱니받침힌지축와셔고정나사(9/64"n=40)	1	
D-29	06-029G-3800	A	Feed Bar Bat Spring	톱니 받침 텐션 스프링	1	
D-30	SC-0138-3800	A	Screw (1/8"n=44)	톱니침나사(1/8"n=44)	2	
D-31	06-030A-3800	A	Support Stud For D-29	톱니 받침판 스프링 지지축	1	
D-32	GP-025330-00		Needle Bar Frame Driving Crank	바늘대 후레임 요동 크랭크	1	
D-33	SC-0122-1230		Screw (15/64"n=28)	톱니받침축고정나사(15/64"n=28)	1	
D-34	SC-0330-7400		Screw (15/64"n=28)	역진레바크랭크침나사(15/64"n=28)	1	
D-35	06-020S-3800		Stud For D-32	수평밀대 크랭크 연결 단나사	1	
D-36	06-003C-7400		E-Ring For D-35	피이드 조절기 힌지핀 E링(φ7)	1	
D-37	06-119A-3800		Crank For D-1	수평밀대 크랭크	1	
D-38	SC-0122-1230		Screw (15/64"n=28)	톱니받침축고정나사(15/64"n=28)	1	
D-39	SC-0330-7400		Screw (15/64"n=28)	역진레바크랭크침나사(15/64"n=28)	1	
D-40	06-020S-3800		Stud For D-37	수평밀대 크랭크 연결 단나사	1	
D-41	06-003C-7400		E-Ring For D-40	피이드 조절기 힌지핀 E링(φ7)	1	
D-42	06-102A-3800		Y-Rod	와이롯드	1	
D-43	06-102A-3400		Connecting Ring For D-42	와이롯드 연결링	1	
D-44	44-018M-3400		Oil Felt For D-43	와이롯드 연결링 급유휠트	1	
D-45	44-015C-3400		Oil Felt Holder For D-44	상하운동 캠 로트 유심잡이	1	
D-46	06-101A-3800		Feed Cam	피이드 캠	1	
D-47	SC-0509-1230		Screw (15/64"n=28)	피드캠고정나사(15/64"n=28)	2	
D-48	06-107A-3800		Feed Link	피이드 링크	1	
D-49	06-009S-3800		Connecting Stud For D-48	피이드 링크 연결축 나사	1	
D-50	SN-0107-1230		Nut (9/32"n=28)	피드조절기연결단나사너트(9/32"n=28)	1	
D-51	06-008S-3800		Connecting Stud For D-50	피이드 조절기 연결축 나사	1	
D-52	SN-0107-1230		Nut (9/32"n=28)	피드조절기연결단나사너트(9/32"n=28)	1	
D-53	06-003A-3800		Feed Regulator	피이드 조절기(K1465)	1	
D-54	GP-025259-00		Shaft For D-53	피이드 조절기 축	1	
D-55	06-004A-3800		Attach Frame For D-53	피이드 조절기 부착 후레임	1	
D-56	SC-0500-7400		Screw (15/64"n=28)	포크침나사(15/64"n=28)	1	
D-57	SC-0534-4125		Screw (15/64"n=28)	훅볼이 등근납작 작은나사(15/64"n=28)	1	

NOTE:

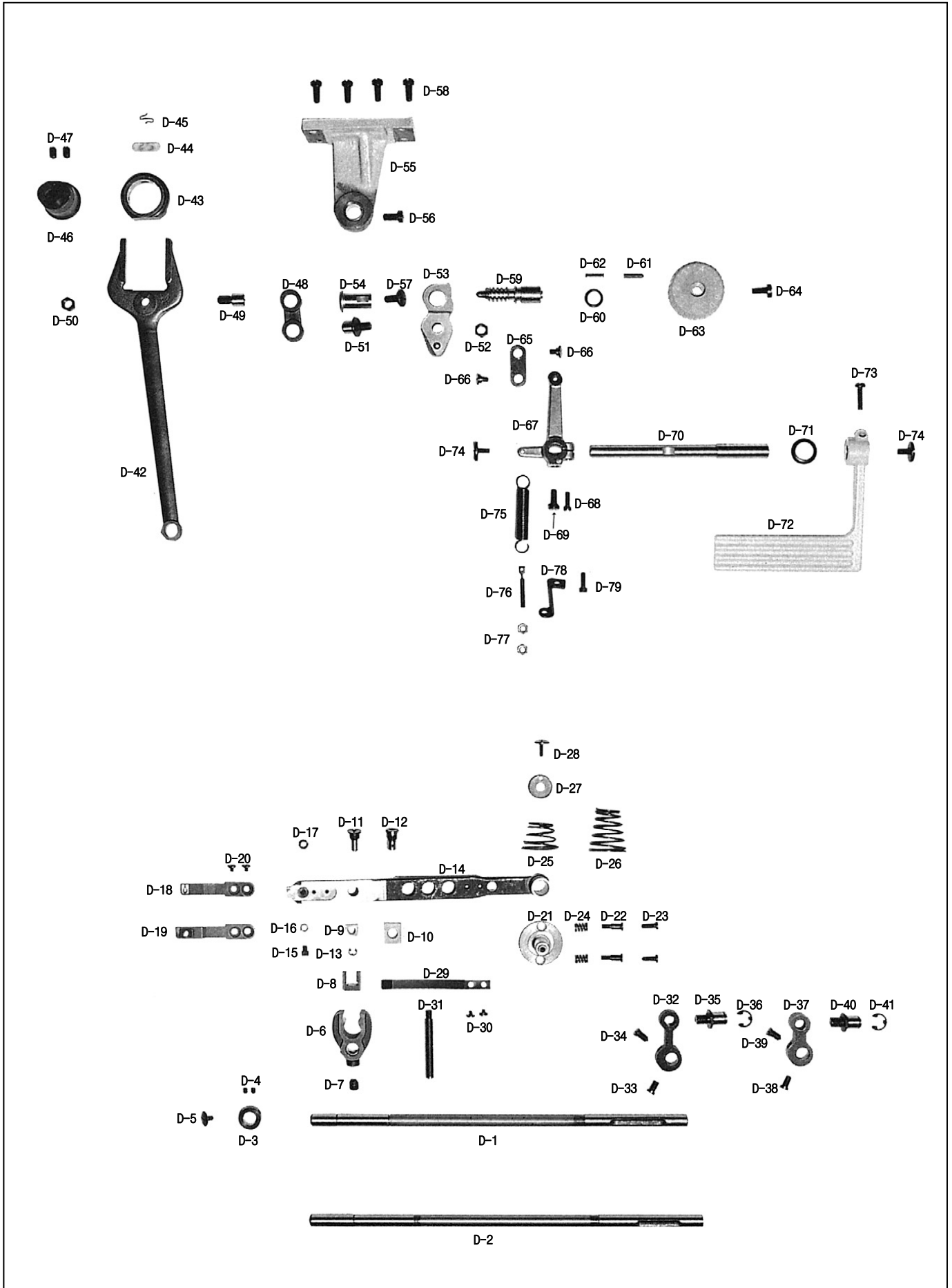
A=KM-380A

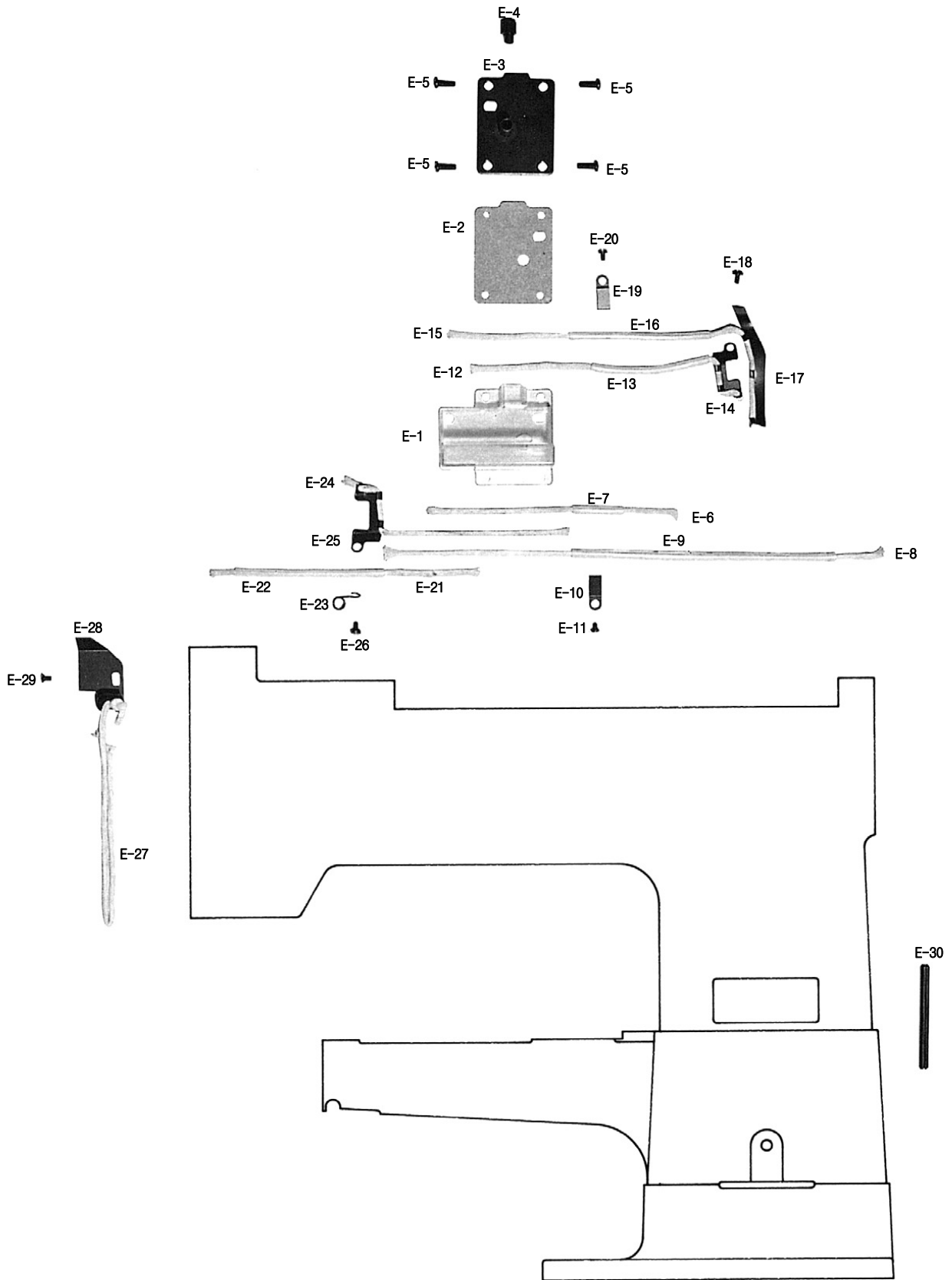
B=KM-380B

D

Lower Feed Mechanism

하피이드 관계

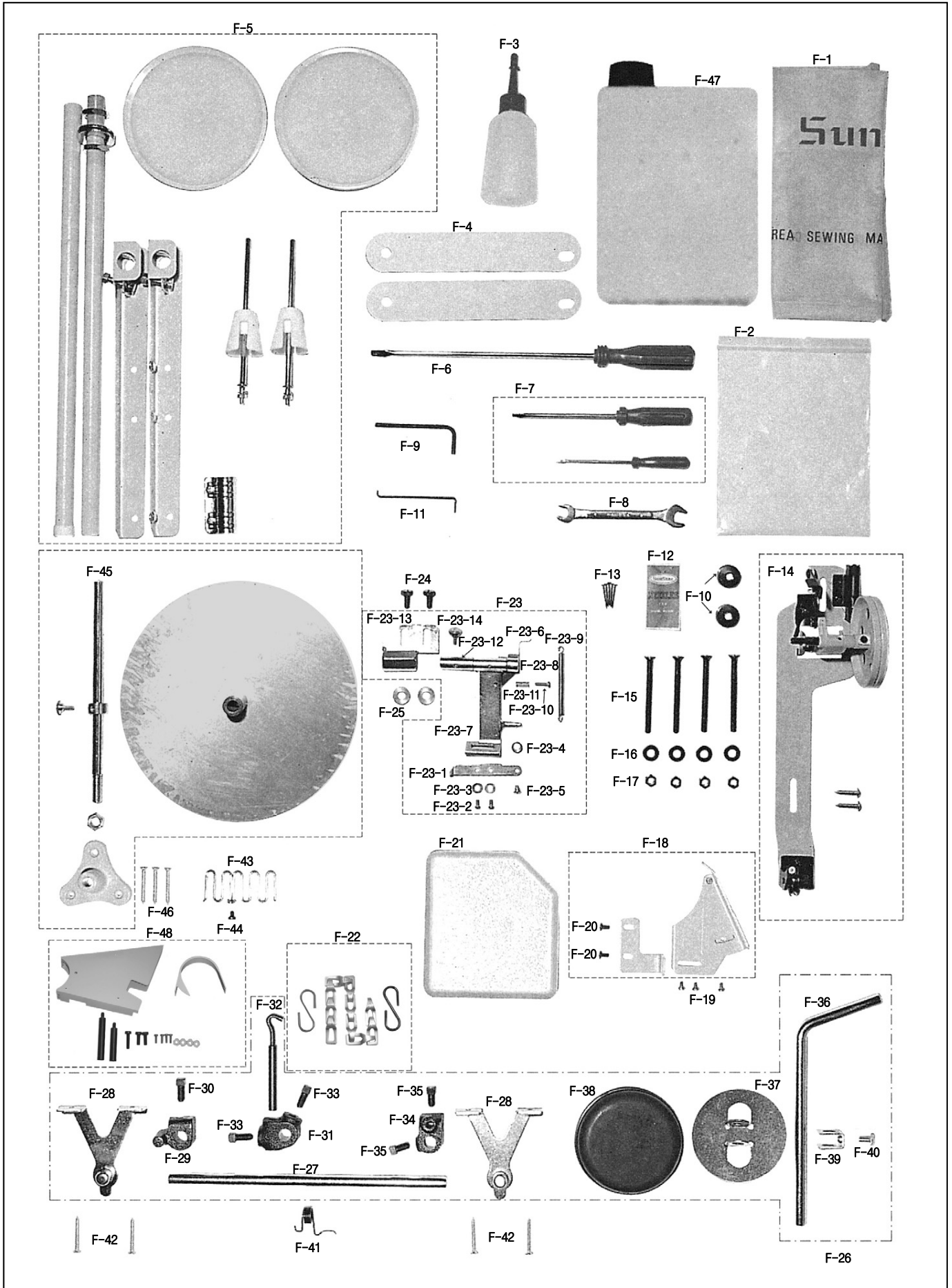




F

Accessories Mechanism

액세서리 관계





Ref. No.	Parts No.	Note	Name of Parts	품 명	Q'ty	Applied Period
F-1	91-006C-2700		Head Cover	미싱커버 (대)	1	
F-2	91-001C-1230		Accessory Box	액세서리 박스	1	
F-3	91-011C-1230		Oiler	유차	1	
F-4	91-005R-3800		Cushion Rubber (2)	테이블 결합 쿠션 고무	2	
F-5	91-007A-2302		Thread Stand Ass'y	실패꽃이 (조)	1	
F-6	91-102C-1230		Driver (Large)	드라이버 (대)	1	
F-7	91-103C-1230		Driver (Middle, Small)	드라이버 (중, 소)	1	
F-8	91-102C-3800		Spanner (910)	스패너	1	
F-9	91-001C-3800		L-Wrench (4mm)	렌치 (4mm)	1	
F-10	07-105A-2700		Bobbin	보빈	4	
F-11	91-106C-3800		Spanner	툼니받침 스토퍼 잠금쇠	1	
F-12	-		Nail	못	5	
F-13	-		Needle	바늘	1	
F-14	AAC-PS000301		Bobbin Winder Ass'y	실감기 (조)	1	Apr.04.12
F-15	SC-0143-3800		Screw (M6×1.0)	두부받침 고정볼트 (M6×1.0)	4	
F-16	09-034W-7400		Washer For Locking Bolt	혹받침 와셔	4	
F-17	SN-0102-3800		Nut (M6×1.0)	두부받침 고정너트 (M6×1.0)	4	
F-18	60-101A-3800		Belt Cover Ass'y	벨트커버 (조)	1	
F-19	SC-0120-1230		Screw (9/64"n=40)	오일펌프 카바나사 (9/64"n=40)	3	
F-20	SC-0543-2302		Screw (11/64"n=40)	툼카바인지 고정나사 (11/64"n=40)	2	
F-21	44-111A-3800		Oil Pan	유수판 (도장품)	1	
F-22	43-105A-3800		Knee Lifting Chain Ass'y	무릎올림줄 (조)	1	
F-23	91-107C-3800	A	Cloth Guide Attachment Ass'y	정규(조)	1Set	
F-23-1	91-112A-3800	A	Cloth Guide	정규	1	
F-23-2	91-113A-3800	A	Set Screw For F-23-1	정규나사	2	
F-23-3	91-114A-3800	A	Washer For F-23-2	정규와셔	2	
F-23-4	91-101A-3800	A	Guide Roller	정규 로울러	1	
F-23-5	91-102A-3800	A	Stud For F-23-4	정규 로울러 단나사	1	
F-23-6	91-105A-3800	A	Attach Body For F-23-1	정규 몸체 브라켓	1	
F-23-7	91-103A-3800	A	Stopper For F-23-6	정규 몸체 스토퍼 브라켓	1	
F-23-8	91-106A-3800	A	Stopper Set Pin	스토퍼 핀	1	
F-23-9	91-104A-3800	A	Return Spring	정규 인장 스프링	1	
F-23-10	91-107A-3800	A	Adjusting Screw For F-23-1	스프링 결이 나사	1	
F-23-11	91-108A-3800	A	Spring For F-23-1	정규 완충 스프링	1	
F-23-12	91-109A-3800	A	Connecting Shaft For F-23	정규 브라켓 축	1	
F-23-13	91-110A-3800	A	Adjusting Guide For F-23-1	정규 브라커버	1	
F-23-14	91-115A-3800	A	Adjusting Screw For F-23-1	정규 브라커버 단나사	1	
F-24	SC-0500-7400	A	Screw (15/64"n=28)	포크젼나사(15/64"n=28)	2	
F-25	91-002W-7600	A	Washer For F-24	정규 젼나사 와셔	2	
F-26	43-206A-3800		Knee Lifting Support Ass'y	무릎받침 (조)	1	
F-27	43-107C-3800		Knee Lifting Shaft	무릎받침 축	1	
F-28	43-108C-3800		Bracket For F-24	무릎올림축 브라켓	2	
F-29	43-109C-3800		Knee Lifting Stopper	무릎올림 스토퍼	1	
F-30	SC-0181-1230		Screw (5/16"n=18)	무릎받침축 고정나사 (5/16"n=18)	1	
F-31	43-113C-3800		Crank For F-29	무릎올림축 연결쇠 크랭크	1	
F-32	43-112C-3800		Knee Lifting Chain Connection Loop	무릎올림축 연결쇠	1	
F-33	SC-0181-1230		Screw (5/16"n=18)	무릎받침축 고정나사 (5/16"n=18)	2	
F-34	43-118C-3800		Connecting Crank For F-26	무릎받침축 연결쇠 크랭크	1	
F-35	SC-0181-1230		Screw (5/16"n=18)	무릎받침축 고정나사 (5/16"n=18)	2	
F-36	43-111C-3800		Knee Support Shaft	무릎올림축	1	
F-37	43-103C-3800		Holder Plate For F-36	무릎받침 고무잡이 판	1	
F-38	43-101R-3800		Knee Support Rubber	무릎받침 고무	1	
F-39	43-105C-3800		Holder For F-35	무릎받침 고무잡이 판 홀더	1	
F-40	43-108S-1230		Fixed Screw F-37	무릎받침 연결링크 젼나사	1	
F-41	43-010G-3400		Knee Support Rubber Tension Spring	무릎받침 고무 텐션 스프링	1	
F-42	91-002S-3400		Screw For F-25	목나사	4	
F-43	20-004C-380B	B	Tape Guide	테이프 안내	1	

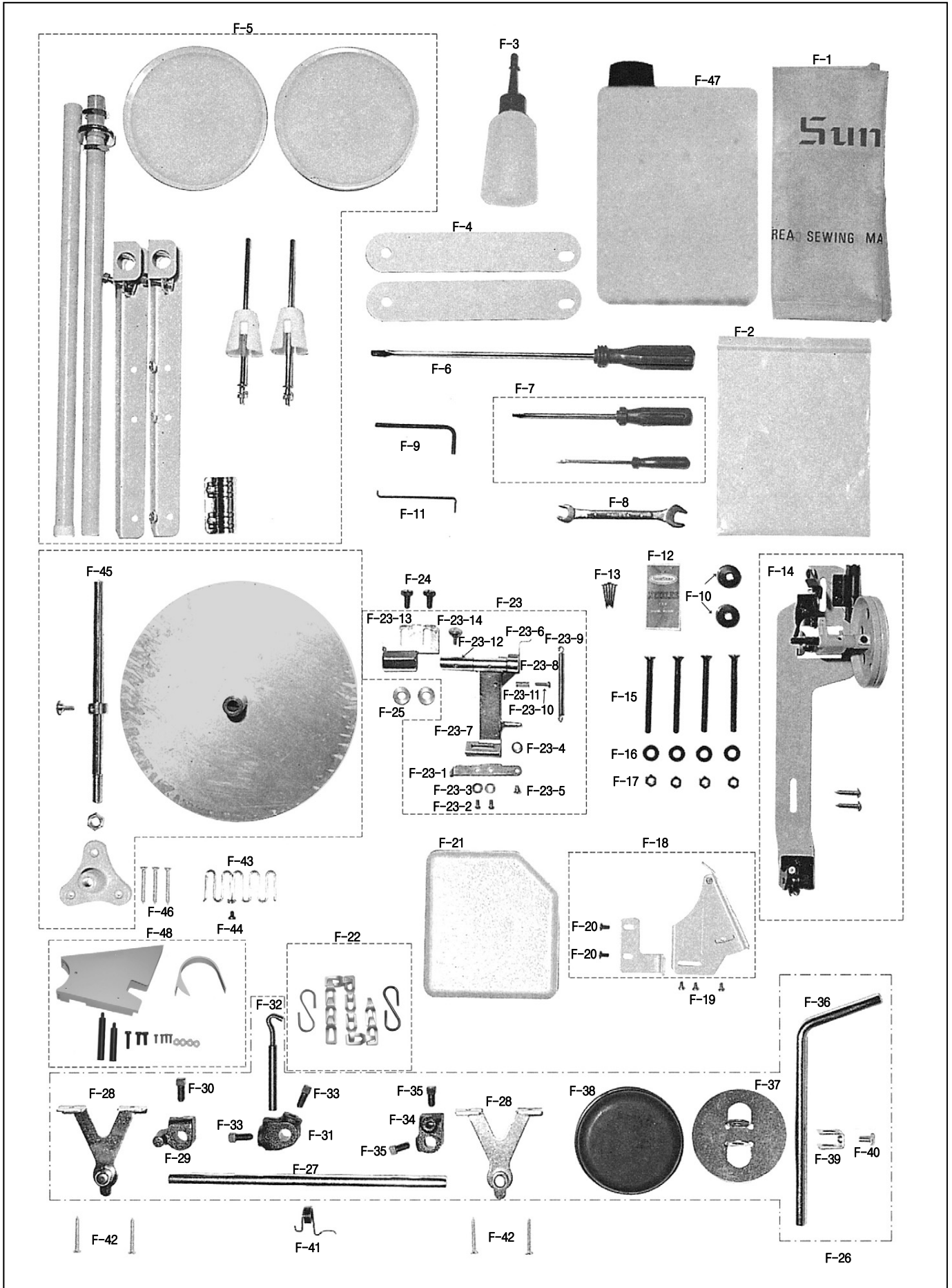
NOTE:

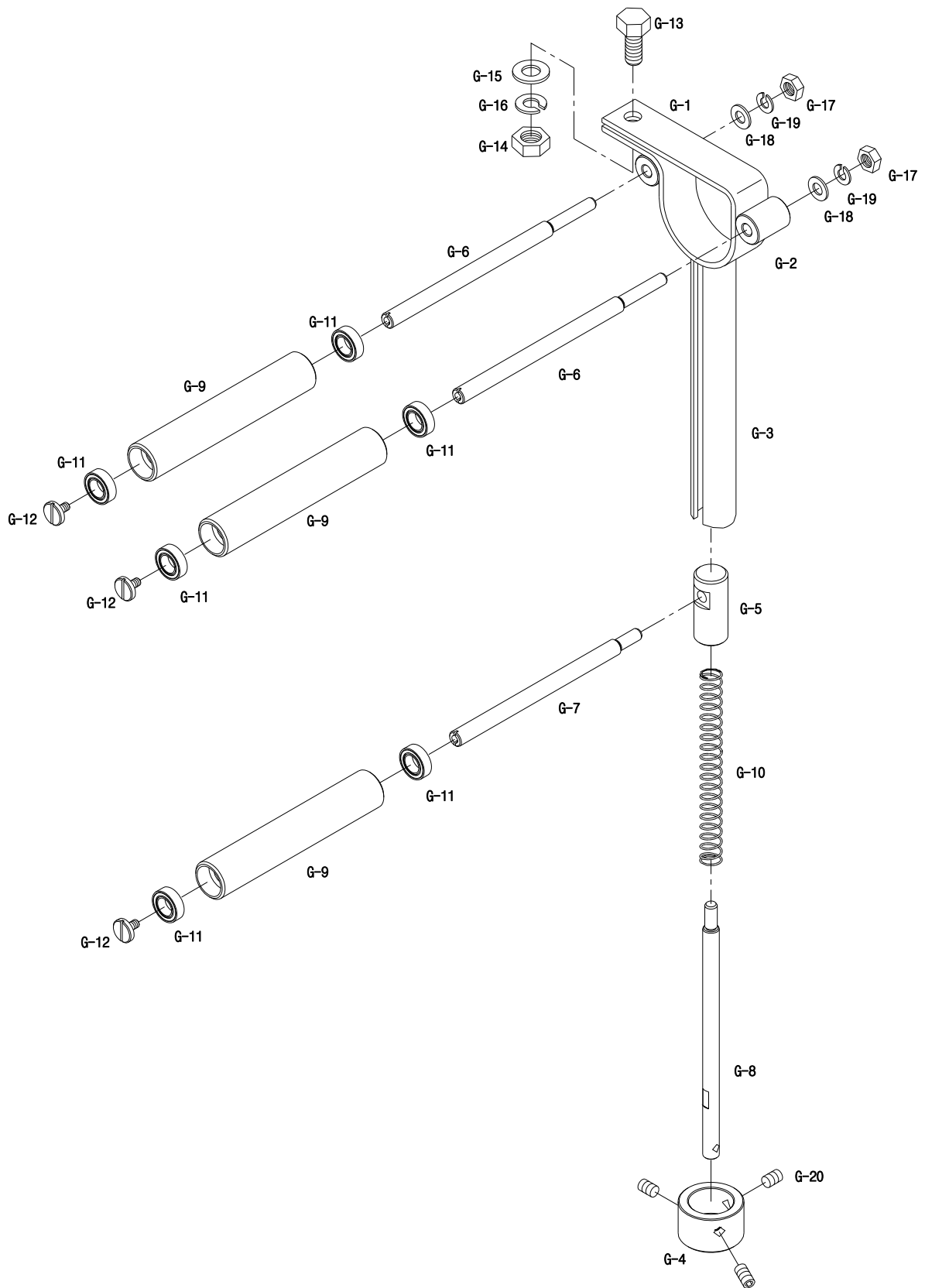
A=KM-380A
B=KM-380B

F

Accessories Mechanism

액세서리 관계





Index

Parts No.	Name of Parts	Page	Ref.No.	Parts No.	Name of Parts	Page	Ref.No.	Parts No.	Name of Parts	Page	Ref.No.
01-004A-380A	Base	7	A-3	04-105A-3500	Shaft For B-23	11	B-21	06-112A-3800	Shaft For D-72	21	D-70
01-007A-3800	Lower Shaft Cover	7	A-35	04-108A-5607	Crank For B-32	11	B-23	06-116A-380A	Feed Locker Shaft	19	D-1
01-007R-8130	Oil Tank Plug For Thread Take-Up Lever	7	A-25	05-001A-380A	Sub Presser Foot	15	C-2	06-116A-380B	Feed Locker Shaft	19	D-2
01-008A-3800	Latch	9	A-58	05-001A-380B	Sub Presser Foot	15	C-3	06-118A-3800	Collar For D-1	19	D-3
01-011A-3800	Face Plate	7	A-4	05-002C-380A	Safety Guard	17	C-69	06-119A-3800	Crank For D-1	19	D-37
01-012A-3800	Rear Cover	7	A-33	05-002C-380B	Safety Guard	17	C-70	06-12CA-3800	Feed Bar Crank	19	D-6
01-013A-380A	Bed Cover Ass'y	7	A-40	05-004A-3800	Presser Regulation Spring	15	C-7	06-139C-1600	Suspension Bracket	21	D-78
01-013A-380B	Bed Cover Ass'y	9	A-47	05-004P-3800	Fixed Pin For Roller Shaft	15	C-33	06-141A-3800	Holder(B) For B-77	13	B-78
01-014G-3800	Spring For Bed Cover	19	D-25	05-005A-3800	Roller For C-8	15	C-36	07-001A-380A	Lower Shaft	13	B-65
01-014G-380B	Spring For Bed Cover	19	D-26	05-005S-1230	Presser Bar Guide Bracket	15	C-9	07-003A-380B	Collar For B-66	13	B-67
01-015A-1230	Three Hole Thread Guide Eyelet	7	A-20-1	05-005S-7400	Hold Stud For C-8	15	C-10	07-004A-3800	Rotary Hook Ass'y	13	B-82
01-015C-3400	Oil Hole Plug For Main Shaft Bushing (Rear)	9	A-57	05-006A-3800	Guide For C-34	15	C-28	07-005A-3800	Bobbin Case	13	B-84
01-016A-3800	Top Cover	7	A-29	05-006A-7400	Presser Bar Lifter	15	C-55	07-101A-380B	Lower Shaft	13	B-66
01-017A-3800	Oil Tank Cover For Thread Take-Up Lever	7	A-24	05-008C-3800	Roller Guide Frame	15	C-29	07-102A-380A	Front Bushing For B-65	13	B-74
01-017W-1600	Washer For C-27	15	C-26	05-009P-3800	Hinge Pin For C-55	15	C-56	07-102A-380B	Front Bushing For B-65	13	B-74-1
01-017W-1600	Washer_(M6)	29	G-18	05-045S-9570	Screw For Roller Shaft_(M4)	29	G-12	07-103A-3800	Rear Bushing For B-65	13	B-71
01-018M-3800	Oil Tank Packing For Thread Take-Up Lever	7	A-26	05-102A-3800	Presser Bar Bracket	15	C-8	07-105A-2700	Bobbin	13	B-83
01-019C-7400	Stopper For A-15-15	7	A-18	05-103A-3800	Roller Shaft For C-8	15	C-32	07-105A-2700	Bobbin	25	F-10
01-020A-380A	Needle Plate	9	A-45	05-109A-3800	Bushing For C-1	15	C-13	08087SC-4113	Bolt_(M8)	29	G-13
01-022A-380A	Base For A-45	9	A-42	05-302A-3800	Presser Ba	15	C-1	09-034W-7400	Washer For Locking Bolt	25	F-16
01-022A-380B	Base For A-52	9	A-50	06-003A-3800	Feed Regulator	19	D-53	11-009A-5607	Washing For C-46	15	C-48
01-023C-3710	Washer For C-29	15	C-30	06-003C-7400	E-Ring For B-50	11	B-51	14064SN-9311	Net_(M6)	29	G-17
01-023C-3710	Washer For C-65	17	C-66	06-003C-7400	E-Ring For D-35	19	D-36	15-007A-5607	Upper Feed Lifting Adjusting Shaft	15	C-46
01-024A-3800	Arm Thread Guide (A)	7	A-7	06-003C-7400	E-Ring For D-40	19	D-41	15-011S-3800	Stud For C-39	15	C-40
01-025A-3800	Arm Thread Guide (B)	7	A-9	06-004A-3800	Attach Frame For D-53	19	D-55	15-013A-3800	Shaft For C-34	15	C-37
01-026A-3800	Arm Thread Guide (C)	7	A-11	06-008S-3800	Connecting Stud For D-50	19	D-51	15-018A-3800	Pressure Adjusting Pole Ass'y	15	C-19
01-027A-1230	Three Hole Thread Guide Eyelet	7	A-20	06-009S-3800	Connecting Stud For D-48	19	D-49	15-019G-3800	Pressure Spring For C-16	15	C-20
01-027A-3800	Arm Thread Guide (D)	7	A-13	06-010R-1230	O-Ring For D-59	21	D-60	15-026P-3800	Fixed Pin For B-45	11	B-46
01-027C-1230	Nut For A-20	7	A-21	06-012P-7400	Feed Regulator Dial Pin	21	D-61	15-026W-3400	Washer	17	C-68
01-029A-380A	Model Mark	7	A-38	06-013G-3800	Spring For D-72	21	D-75	15-030P-3800	Hinge Pin For B-36	11	B-37
01-029M-380B	Model Mark	7	A-39	06-014A-3800	Feed Regulator Dial Shaft	21	D-59	15-031A-3800	Guide For B-36	11	B-40
01-030C-3800	Lock Pin For Face Plate	7	A-6	06-015C-3800	Length Control Dial	21	D-63	15079SN-2311	Net_(M8)	29	G-14
01-034M-7400	Machine Number Plate	9	A-55	06-020C-7400	E-Ring (φ6)	15	C-35	15095SW-4115	Spring washer_(M8)	29	G-16
01-035P-7400	Setting Pin For A-55	9	A-56	06-020S-3800	Stud For B-52	11	B-50	15-101A-3800	Upper Feed Lifting Eccentric Cam	15	C-53
01-105A-380A	Bed Hinge Ass'y	9	A-62	06-020S-3800	Stud For D-32	19	D-35	15-109A-3800	Bushing For C-42	15	C-43
01-110C-3800	Washer For A-58	9	A-60	06-020S-3800	Stud For D-37	19	D-40	15-110A-3800	Upper Feed Connecting Link	15	C-39
01-115A-3800	Hook Cover	9	A-54	06-024A-3800	Hinge Stud For D-14	19	D-21	15-112A-3800	Connecting Link For C-16	15	C-34
01-116A-2350	Upper Thread Guide Pin	7	A-31	06-025S-3800	Screw For D-21	19	D-22	15-114A-3800	Driving Link For C-16	15	C-23
01-119A-3800	Cover For Take-Up Lever	7	A-22	06-026G-3800	Tension Spring For D-21	19	D-24	15-115A-3800	Upper Feed Presser Bar	15	C-15
01-120A-380B	Needle Plate	9	A-52	06-027G-1230	Feed Regulator Dial Spring	21	D-62	15-117A-3800	Guide Block For C-15	15	C-24
01-127C-1230	Set Screw For A-31	7	A-32	06-029G-3800	Feed Bar Bat Spring	19	D-29	15-122A-3800	Driving Shaft Connecting Rod	11	B-52
02-006A-3400	Pulley	11	B-13	06-030A-3800	Support Stud For D-29	19	D-31	15-123A-3800	Driving Shaft Crank (Rear)	11	B-48
02-009M-7400	Oil Felt For B-2	11	B-3	06-031A-380A	Block Stud For D-14	19	D-11	15-123A-5607	Guide Plate For C-15	15	C-25
02-009M-7400	Oil Felt For B-4	11	B-5	06-031A-380B	Block Stud For D-14	19	D-12	15-124A-3800	Needle Bar Frame Driving Shaft	11	B-47
02-101A-3800	Main Shaft	11	B-1	06-032A-380A	Feed Bar Slide Block(A)	19	D-9	15-127A-3800	Shaft For B-42	11	B-43
02-103A-7400	Holder For B-25	11	B-24	06-033M-3800	E-Ring For D-11	19	D-13	15-129A-3800	Needle Bar Frame	11	B-36
02-104A-3800	Front Bushing For B-1	11	B-2	06-034C-3800	Stopper For D-14	19	D-15	15-133A-380A	Upper Feed Presser Foot	15	C-16
02-105A-3800	Center Bushing For B-1	11	B-4	06-035C-3800	Nut For D-15	19	D-17	15-133A-380B	Upper Feed Presser Foot	15	C-17
02-106A-1230	Main Shaft Collar	11	B-7	06-036W-3800	Feed Dog Adjusting Washer	19	D-16	15-202A-3800	Rod For C-53	15	C-50
02-106A-3800	Rear Bushing For B-1	11	B-11	06-037A-380A	Feed Dog	19	D-18	15-203A-3800	Upper Feed Lifting Adjusting Crank	15	C-44
02-211A-1230	Main Shaft Gear	11	B-9	06-037A-380B	Feed Dog	19	D-19	15-206A-3800	Bushing For B-46	15	C-47
02-212A-1230	Upright Shaft Upper Gear	11	B-57	06-039A-3800	Feed Driving Cam	13	B-77	16-014C-3710	Connecting Link For D-53	21	D-65
02-213A-1230	Upright Shaft Lower Gear	13	B-63	06-040S-1600	Adjusting Screw For D-75	21	D-76	16-015S-3710	Hinge Screw For D-65	21	D-66
02-214A-1230	Lower Shift Gear	13	B-69	06-042A-3800	Cover For B-78	13	B-79	20-001A-380B	Tape Stand Ass'y	27	F-45
03-011A-3800	Upright Shaft	11	B-56	06-043C-3800	Stopper Pin For B-78	13	B-80	20-002A-380B	Binder Supporting Screw	9	A-48
03-013R-3710	Oil Seal (B)	11	B-54	06-050A-1230	Reverse Feed Control Lever	21	D-72	20-002C-380B	Binder Supporting Screw Nut	9	A-49
03-102A-3800	Upper Bushing For B-56	13	B-59	06-053W-1230	Corrugated Washer For D-70	21	D-71	20-004C-380B	Tape Guide	25	F-43
03-103A-3800	Lower Bushing For B-56	13	B-61	06-101A-3800	Feed Cam	19	D-46	22-012W-2516	Spring washer	29	G-19
04014SC-4517	Screw_(M5)	29	G-20	06-102A-3400	Connecting Ring For D-42	19	D-43	40-001A-3800	Thread Tension Adjusting Equipment Ass'y	7	A-15
04029SW-A001	Washer_(M8)	29	G-15	06-102A-3800	Y-Rod	19	D-42	40-002A-3800	Thread Tension Release Ass'y	15	C-12
04-101A-3800	Needle Bar	11	B-32	06-107A-3800	Feed Link	19	D-48	40-004G-3800	Return Spring For C-12	15	C-11
04-102A-3800	Thread Guide For B-32	11	B-33	06-111A-3800	Crank For D-58	21	D-67	40-101A-3800	Lower Plate For A-15	7	A-15-1

Index

Parts No.	Name of Parts	Page	Ref.No.	Parts No.	Name of Parts	Page	Ref.No.	Parts No.	Name of Parts	Page	Ref.No.
40-102A-3800	Spring For A-15-2	7	A-15-4	44-012R-7400	Rubber Cap For Oil Tank	23	E-4	GP-034545	Bed cylinder holder bar	29	G-3
40-103C-3800	Shaft For C-12	17	C-67	44-013C-3800	Packing For E-1	23	E-2	GP-034549	Bed cylinder holder bar collar	29	G-4
40-103S-3800	Set Screw For A-15-2	7	A-15-3	44-015C-3400	Oil Felt Holder For C-51	15	C-52	GP-034552	Bed cylinder holder Bushing	29	G-2
40-104A-3800	Thread Tension Release Plate	7	A-15-2	44-015C-3400	Oil Felt Holder For D-44	19	D-45	GP-034555	Shaft spring	29	G-10
40-105A-3800	Guide For A-15-5	7	A-15-6	44-018M-3400	Oil Felt For D-43	19	D-44	GP-034559	Guide shaft	29	G-8
40-106A-3800	Stopper Screw A-15-6	7	A-15-7	44-023M-3400	Oil Felt For C-50	15	C-51	GP-035167	Cylindrical Bed	7	A-2
40-107A-3800	Adjusting Shaft For Thread Tension	7	A-15-12	44-026G-7400	Oil Wick Holder For E-22	23	E-23	GP-035918	Feed Bar Crank Block	19	D-8
40-108A-3800	Nut For A-15-8	7	A-15-9	44-104A-3800	Wick Holder For E-13	23	E-14	GP-035919	Feed Bar Slide Block(B)	19	D-10
40-108A-3800	Nut For A-15-12	7	A-15-14	44-110A-3400	Wick Holder For E-16	23	E-17	GP-043992	Thread Take-Up Lever	11	B-25
40-109A-3800	Disc For Thread Guide	7	A-15-10	44-111A-3800	Oil Pan	25	F-21	GP-044030	Holder(B) For B-77	13	B-78
40-110A-3800	Pushing Plate For A-15-10	7	A-15-11	44-111C-7400	Oil Return Tube	23	E-9	GP-046517	Driving Shaft Crank (Front)	11	B-45
40-111A-3800	Thread Adjusting Equipment Shaft	7	A-15-8	44-111C-7400	Oil Wick Holder For E-12, 16	23	E-19	PN-000184	Hinge Pin For B-25	11	B-26
40-111G-3800	Thread Take-Up Lever Spring	7	A-15-5	44-124C-3400	Oil Wick Holder For E-24	23	E-25	SC-000412	Thumb Screw For A-58	9	A-61
40-112A-3800	Stopper Pin For A-15-10	7	A-15-15	60-101A-3800	Belt Cover Ass'y	25	F-18	SC-001213	Screw (9/32"n=28)	11	B-18
40-113A-3800	Pin For A-15-1	7	A-15-16	60-201A-3800	Belt Cover Ass'y	27	F-48	SC-0104-5607	Screw (11/64"n=40)	19	D-4
40-333G-3800	Adjusting Spring For Thread Tension	7	A-15-13	91-001C-1230	Accessory Box	25	F-2	SC-0111-380B	Screw (9/64"n=40)	13	B-68
43-001S-3400	Hinge Screw For C-57	17	C-58	91-001C-3800	L-Wrench (4mm)	25	F-9	SC-0120-1230	Screw (9/64"n=40)	7	A-8
43-003G-3800	Spring For C-57	17	C-65	91-001S-3400	Screw For F-42	27	F-46	SC-0120-1230	Screw (9/64"n=40)	7	A-10
43-004A-3800	Knee Lifting Lod	17	C-61	91-002S-3400	Screw For F-25	25	F-42	SC-0120-1230	Screw (9/64"n=40)	7	A-12
43-004S-3400	Hinge Screw For A-58	9	A-59	91-002W-7600	Washer For F-24	25	F-25	SC-0120-1230	Screw (9/64"n=40)	7	A-14
43-004S-3400	Hinge Screw For C-59	17	C-60	91-005R-3800	Cushion Rubber (2)	25	F-4	SC-0120-1230	Screw (9/64"n=40)	25	F-19
43-010G-3400	Knee Support Rubber Tension Spring	25	F-41	91-006C-2700	Head Cover	25	F-1	SC-0122-1230	Screw (15/64"n=28)	19	D-33
43-101A-3800	Knee Lifting Lever	15	C-57	91-007A-2302	Thread Stand Ass'y	25	F-5	SC-0122-1230	Screw (15/64"n=28)	19	D-38
43-101R-3800	Knee Support Rubber	25	F-38	91-011C-1230	Oiler	25	F-3	SC-0128-7400	Screw (11/64"n=40)	15	C-18
43-103A-3400	Connection Holder	17	C-59	91-101A-3800	Guide Roller	25	F-23-4	SC-0128-7400	Screw (11/64"n=40)	17	C-64
43-103C-3800	Holder Plate For F-36	25	F-37	91-102A-3800	Stud For F-23-4	25	F-23-5	SC-0138-3800	Screw (1/8"n=44)	19	D-20
43-105A-3800	Knee Lifting Chain Ass'y	25	F-22	91-102C-1230	Driver (Large)	25	F-6	SC-0138-3800	Screw (1/8"n=44)	19	D-30
43-105C-3800	Holder For F-35	25	F-39	91-102C-3800	Spanner (910)	25	F-8	SC-0140-5607	Screw (1/4"n=24)	15	C-45
43-107C-3800	Knee Lifting Shaft	25	F-27	91-103A-3800	Stopper For F-23-6	25	F-23-7	SC-0143-3800	Screw (M6x1.0)	25	F-15
43-108C-3800	Bracket For F-24	25	F-28	91-103C-1230	Driver (Middle, Small)	25	F-7	SC-0145-3800	Screw (9/64"n=40)	9	A-51
43-108S-1230	Fixed Screw F-37	25	F-40	91-104A-3800	Return Spring	25	F-23-9	SC-0150-2500	Screw (15/64"n=28)	11	B-14
43-109C-3800	Knee Lifting Stopper	25	F-29	91-105A-3800	Attach Body For F-23-1	25	F-23-6	SC-0158-3710	Screw (9/64"n=40)	11	B-31
43-111C-3800	Knee Support Shaft	25	F-36	91-105C-1230	Oiler	27	F-47	SC-0174-1230	Screw (11/64"n=40)	15	C-27
43-112C-3800	Knee Lifting Chain Connection Loop	25	F-32	91-106A-3800	Stopper Set Pin	25	F-23-8	SC-0175-1230	Screw (11/64"n=40)	7	A-16
43-113C-3800	Crank For F-29	25	F-31	91-106C-3800	Spanner	25	F-11	SC-0175-1230	Screw (11/64"n=40)	7	A-28
43-118C-3800	Connecting Crank For F-26	25	F-34	91-107A-3800	Adjusting Screw For F-23-1	25	F-23-10	SC-0176-1230	Screw (11/64"n=40)	27	F-44
43-206A-3800	Knee Lifting Support Ass'y	25	F-26	91-107C-3800	Cloth Guide Attachment Ass'y	25	F-23	SC-0179-3710	Screw (11/64"n=40)	7	A-23
44-0000-1230	Oil Wick	11	B-22	91-108A-3800	Spring For F-23-1	25	F-23-11	SC-0179-3710	Screw (11/64"n=40)	19	D-23
44-0000-1230	Oil Wick	11	B-27	91-109A-3800	Connecting Shaft For F-23	25	F-23-12	SC-0179-3710	Screw (11/64"n=40)	23	E-5
44-0000-1230	Oil Wick	11	B-30	91-110A-3800	Adjusting Guide For F-23-1	25	F-23-13	SC-0180-3800	Screw (11/64"n=40)	11	B-41
44-0000-1230	Oil Wick	11	B-38	91-112A-3800	Cloth Guide	25	F-23-1	SC-0181-1230	Screw (5/16"n=18)	25	F-30
44-0000-1230	Oil Wick	23	E-6	91-113A-3800	Set Screw For F-23-1	25	F-23-2	SC-0181-1230	Screw (5/16"n=18)	25	F-33
44-0000-1230	Oil Wick	23	E-8	91-114A-3800	Washer For F-23-2	25	F-23-3	SC-0181-1230	Screw (5/16"n=18)	25	F-35
44-0000-1230	Oil Wick	23	E-12	91-115A-3800	Adjusting Screw For F-23-1	25	F-23-14	SC-0185-1230	Screw (3/16"n=32)	21	D-74
44-0000-1230	Oil Wick	23	E-15	AAC-PS0003	Bobbin Winder Ass'y	25	F-14	SC-0186-1230	Screw (3/16"n=32)	21	D-73
44-0000-1230	Oil Wick	23	E-21	BR-000016	Bearing	29	G-11	SC-0188-1230	Screw (5/16"n=24)	11	B-15
44-0000-1230	Oil Wick	23	E-24	CL-000231	Collar For C-61	17	C-63	SC-0189-380A	Screw (11/64"n=40)	9	A-46
44-0000-1230	Oil Wick	23	E-27	CUS-DA0022	Counterweight	11	B-16	SC-0193-1230	Screw (3/16"n=28)	21	D-64
44-001A-3800	Gear Case Ass'y	11	B-53	GP-010500	Upper Feed Driving Shaft	15	C-42	SC-0198-3800	Screw (9/64"n=40)	19	D-28
44-002A-3800	Oil Tank Ass'y	23	E-1	GP-017598	Front Bushing For B-47	13	B-85	SC-0200-3800	Screw (11/64"n=40)	19	D-5
44-003A-3800	Pushing Plate Ass'y	23	E-3	GP-017923	Arm	7	A-1	SC-0201-1230	Screw (5/16"n=24)	19	D-7
44-006M-3800	Oil Felt For B-11	11	B-12	GP-018077	Feed Bar	19	D-14	SC-0307-1230	Screw (3/16"n=32)	15	C-31
44-007M-3800	Oil Felt For B-71	13	B-72	GP-021109	Holder(A) For B-77	13	B-76	SC-0309-3800	Screw (9/64"n=40)	9	A-43
44-007M-3800	Oil Felt For B-65	13	B-75	GP-025258	Needle Bar Holder	11	B-29	SC-0309-3800	Screw (9/64"n=40)	9	A-44
44-008M-3800	Oil Tank Felt For Thread Take-Up Lever	7	A-27	GP-025259	Shaft For D-53	19	D-54	SC-0315-2302	Screw (9/64"n=40)	15	C-4
44-009A-3800	Oil Pipe For B-71	23	E-30	GP-025330	Needle Bar Frame Driving Crank	19	D-32	SC-0325-3800	Screw(M8x1.25)	9	A-63
44-010A-3800	Oil Stopper Plate	23	E-28	GP-034022	Block For B-36	11	B-42	SC-0330-7400	Screw (15/64"n=28)	19	D-34
44-011C-7400	Oil Wick Holder For E-6, 8	23	E-10	GP-034531	Guide block	29	G-5	SC-0330-7400	Screw (15/64"n=28)	19	D-39
44-012C-1230	Oil Return Tube	23	E-7	GP-034532	Roller	29	G-9	SC-0335-3800	Screw (3/16"n=32)	13	B-81
44-012C-1230	Oil Return Tube	23	E-13	GP-034538	Roller shaft "A"	29	G-6	SC-0343-3800	Screw (15/64"n=28)	15	C-21
44-012C-1230	Oil Return Tube	23	E-16	GP-034540	Roller shaft "B"	29	G-7	SC-0352-7400	Screw (3/16"n=28)	7	A-17
44-012C-1230	Oil Return Tube	23	E-22	GP-034542	Bed cylinder holder	29	G-1	SC-0365-3710	Screw (9/64"n=40)	7	A-5

