



PARTS BOOK

KM-390BL

Cylinder-Bed Type, 1-Needle
Unison Feed, Horizontal Large Hook,
Lock Stitch Machine

실린더 베드형, 1본침 본봉 총합송
재봉기 (수평 2배혹)

KM-390

Cylinder-Bed Type, 1-Needle
Unison Feed, Horizontal Standard
Hook, Lock Stitch Machine

실린더 베드형, 1본침 본봉 총합송
재봉기(수평 표준혹)

PME-120921

Information

A. Parts Book 구성

Structure of Part Book

① **A** Arm, Bed & Machine Body Mechanism
팔, 침대 및 의장품 관계

②

③

④ ⑤ ⑥ ⑦ ⑧ ⑨

Ref. No.	Parts No.	Note	Name of Parts	품명	Q'ty	Assembly No.
A-1	01-12841-03		Arm	팔	1	
A-2	01-10073-06		Bed	침대	1	
A-4	01-02120-00		Face Plate	면판	1	
A-5	01-02044-12H		Face Plate Gasket	면판 가스켓	1	
A-6	01-1174-4122		Screw(L) 084*mm(2)	볼트	10	
A-7	01-11011-123D		Rubber Cap For Face Plate	면판 고무캡	2	
A-9	01-00194-123D		Caution S/Screw	경고 스크류	1	
A-8	01-011973-00		Thermap Layer Cover	발열기 피막	1	
A-10	01-02020-00		Screw(S) 084*mm(2)	볼트(S) 084*mm(2)	1	
A-11	01-01746-00		Bed Cover(L)	침대 커버(좌)	1	
A-12	01-01441-123H		Bed Cover Gasket(L)	침대 커버 가스켓(좌)	1	
A-13	01-02643-123D		Screw(L) 084*mm(2)	볼트(S) 084*mm(2)	14	
A-13-1	45-0244-1000		Washer	와셔	2	
A-14	01-01750-00		Bed Cover(S)	침대 커버(우)	1	
A-15	01-01746-123H		Bed Cover Gasket(S)	침대 커버 가스켓(우)	1	
A-16	440211-100H		T/Tank Rubber Cap	고압 탱크 고무캡	1	
A-17	01-02074-123D		Thread Guide with Three Poles	세극용 실선지(3)	15Set	
A-19	01-02031-123D		Thread Guide(L)	실선지(좌)	1	
A-20	01-02032-123D		Thread Guide(R)	실선지(우)	3	
A-21	01-01000-123D		Thread Guide(S)	실선지(중)	1	
A-22	01-01643-00		Arm Thread Guide Assy	팔 실선지 실선지(중)	1	
A-23	11-01750-750D		Nut	너트	1	
A-24	01-02031-123H		Thread Guide(L)	실선지(좌)	1	
A-25	0102070-100H		Siscon Tank Assy	실리콘 탱크 탱크(중)	15Set	
A-26	0102065-100H		Siscon Tank	실리콘 탱크 탱크	1	
A-27	0102066-100H		Siscon Oil Window	실리콘 유창 창	1	
A-28	0102401-100H		Siscon Part	실리콘 부품 부품	1	
A-29	01-01303-00		Part for Siscon Oil Supply	실리콘 기름 공급 부품	1	
A-30	01-01643-123D		Screw(L) 084*mm(2)	볼트(S)	1	
A-31	04-02411-123D		Arm Upper Part Rubber Cap	팔 상부 고무 캡	2	
A-33	04-02311-123H		Needle Bar Rubber Cap	바늘봉 고무 캡	1	
A-34	01-04211-042L		Rubber Cap(L)	고무캡(좌)	4	
A-35	44-02111-7400		Rubber Cap(S)	고무캡(중)	7	
A-36	01-01750-123H		Bed Rubber	침대 고무	1	
A-37	01-019817-00		Welder (Sticker)(H)	인쇄 스티커-수용용	1	
A-38	01-019818-00		M Welder (Sticker)(M)	인쇄 스티커-중형용	1	
A-39	01-019819-00		L Welder (Sticker)(L)	인쇄 스티커-대형용	1	
A-40	01-019820-00		K Welder (Sticker)(K)	인쇄 스티커-비용	1	
A-41	01-02110-123D		Tap Cover	타프 커버	2	
A-42	01-02114-123H		Tap Cover	타프 커버	1	
A-43	41-0114-123H		Siscon Winder Assy	실선기(중)	15Set	
A-44	41-02011-123H		Siscon Winder (Base Assy)	실선기 베이스(중)	1	
A-45	41-0205A-123H		Siscon Winder (Shaft)	실선기 구동축	1	
A-46	01-02060-00	S. Gdn	Sticker(S)	인쇄 스티커-중소형	1	
A-47	01-02061-750D		Screw(S)	볼트(S)	1	
A-48	41-02061-123H		Siscon Winder	실선기 지름지	1	
A-49	01-0104-550T		Screw(L) 084*mm(2)	볼트(S)	2	
A-50	41-02061-123H		Siscon Winder Action Ring	실선기 지름지	1	
A-51	41-02061-123H		Siscon Winder Shaft Rubber Ring	실선기 구동축 고무링	1	
A-52	41-02101-123H		Siscon Winder Lamin	실선기 피막	1	
A-53	41-02111-123H		Siscon Winder Adjusting Plate	실선기 조정판	1	
A-54	01-01130-123D		Screw(L) 084*mm(2)	볼트(S)	1	
A-55	01-01194-123D		Washer	와셔	1	
A-56	41-02111-123H		Siscon Winder Lower Shaft	실선기 하부 축	1	
A-57	41-02140-123H		Siscon Winder Adjusting Term	실선기 조정 탭	1	
A-58	0102150-04113		Screw(M) 084*mm(2)	볼트(S)	1	

Note: P= Heavy Material(중형용), M=Medium Material(중형용), H= Pneumatic Heavy Material(공압식 중형용)
L= Light Material(저형용), K=Roll Material(롤용), EL=Large Shuttle Piece(대 셔틀 폭)

①: 관계 별 고유 코드

Unique code by mechanism

②: 관계 별 고유 명칭

Unique name by mechanism

③: 관계도

Explode view

④ Ref.No.: 파트별 고유 식별 번호

Unique identification number by part

⑤ Parts No.: 고유 제품 코드

Unique Product code

Ex)

구분 Category	Code	비고 remarks
구 부품 Old part	01-030C-1230	
신 부품 New Part	AS-000000-00	조(조) 파트 Set parts
	GP-000000-00	기구적 파트 Instrumental parts
	EP-000000-00	전기적 파트 Electrical parts

⑥ Note: 공지사항 표기 및 메모

Refers to notice and memo

⑦ 품

명: 파트의 고유 품명

Name of Part: Unique name of parts

⑧ Q'ty : 파트의 수량

The number of parts

⑨ Assembly no.: 조(조) 파트의 식별 번호

Unique identification number by set part

Warning

1. 조에 속한 파트는 개별 조립 시 제품의 파손 또는 재봉 불량 발생될 수 있어 해당 파트에 대한 주문 시에는 조 품목으로만 구입이 가능합니다.
2. 본 책자는 Parts Book으로 제작되었으므로 매뉴얼로 사용 불가합니다.
3. 사전 예고 없이 사양이 변경 될 수도 있습니다.

1. The parts classified as ass'y items may cause damage to the machine or bad sewing when they are separately assembled. Hence, when they are ordered, they can be purchased as ass'y items only.
2. This is a parts book. It cannot be used as a manual.
3. Parts are Subject to change in Design Without Prior Notice.

Note

- 썬스타 제품의 부품은 아래 인터넷주소로 접속하시어 신청할 수 있습니다.
<http://www.sunstarcs.com>
- 가입된 회원께서는 썬스타 포탈 사이트에 로그인후 필요한 부품을 신청할 수 있습니다.
- 부품관리-발주관리-발주등록 항목에서 부품번호와 신청수량을 입력하여 등록하시면 발주가 됩니다.
- 부품번호를 모르시는 경우 파츠북 조회를 클릭하시고 사용하는 기종을 검색하여 선택하시면 해당 기종의 파츠북을 조회할 수 있습니다.
- 파츠북은 관계별로 구분되어 있으며 관계를 알고 있다면 부품 찾기가 용이합니다.

- You can make an order for the parts of Sunstar machine to connect internet address.
<http://www.sunstarcs.com>
- You can request for parts you want after login if you are a registered member.
- In parts Management - Order Management - Order Registration entry, you can place an order by entering the part number and quantity.
- If you don't know the parts number, click the parts book menu bar.
In a download list, you can read parts book by searching model you use.
- This parts book is classified by the mechanism, therefore you can find part easily.

CONTENTS

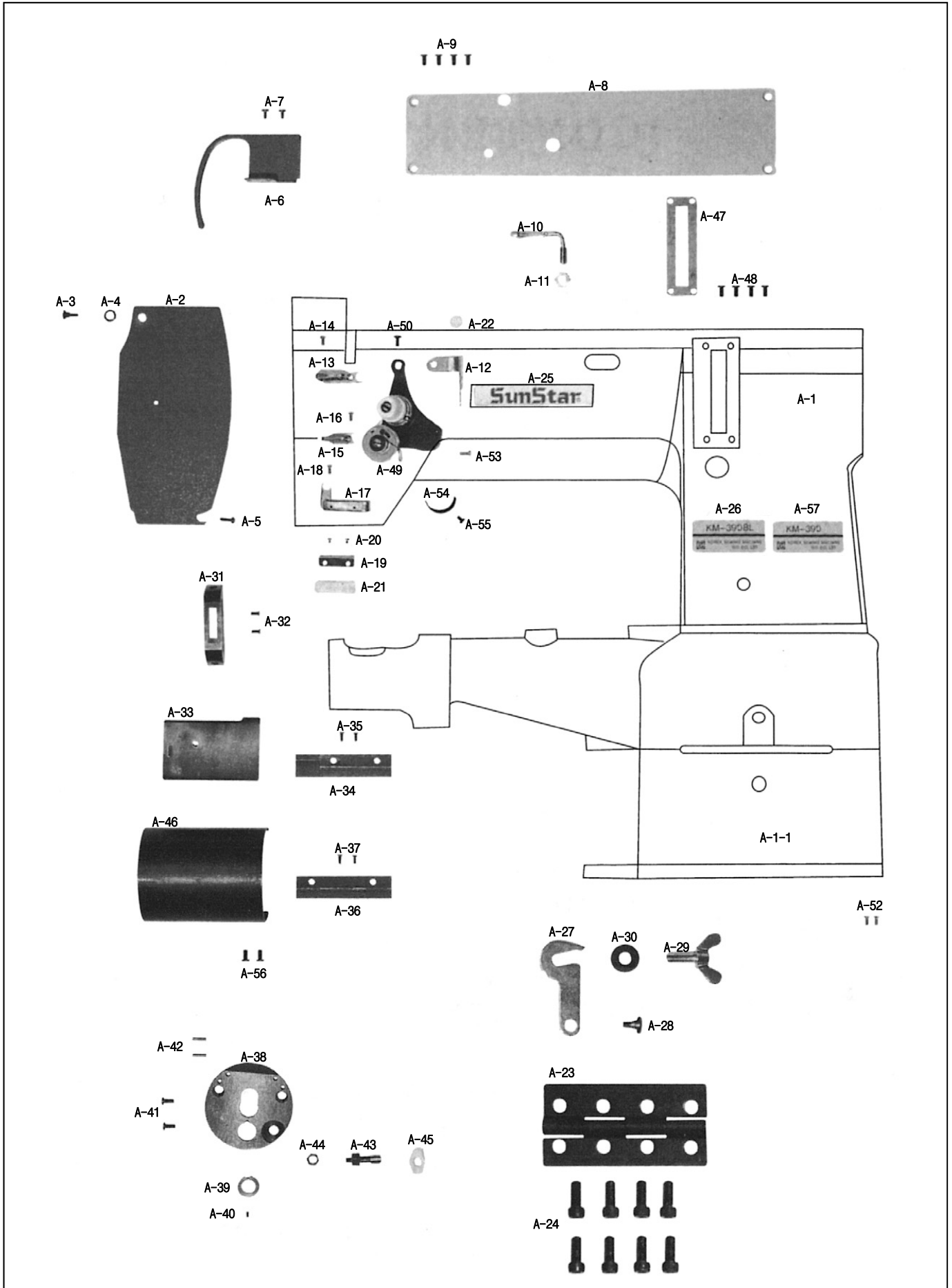
목 차

A	Machine Body & Thread Tension Adjusting Mechanism 외장 및 실장력 조절 관계	6
B	Upper and Lower Shaft Mechanism 상축 및 하축 관계	8
C	Needle Bar and Upper Feed Mechanism 바늘대 및 상피이드 관계	12
D	Lower Shaft and Lower Feed Mechanism 하축 및 하피이드 관계	14
E	Presser Foot and Knee Lifting Mechanism 노루발 및 무릎올림 관계	16
F	Lubrication Mechanism 급유 관계	18
G	Accessories Mechanism 액세서리 관계	20
H	Special Parts for KM-390 Mechanism KM-390 전용부품 관계	22
I	Special Parts for KM-390BLS Mechanism KM-390BLS 전용부품 관계	26
J	Gauge Parts 게이지 파트	28
	Index 인덱스	30

A

Machine Body & Thread Tension Adjusting Mechanism

외장 & 실장력 조절 관계





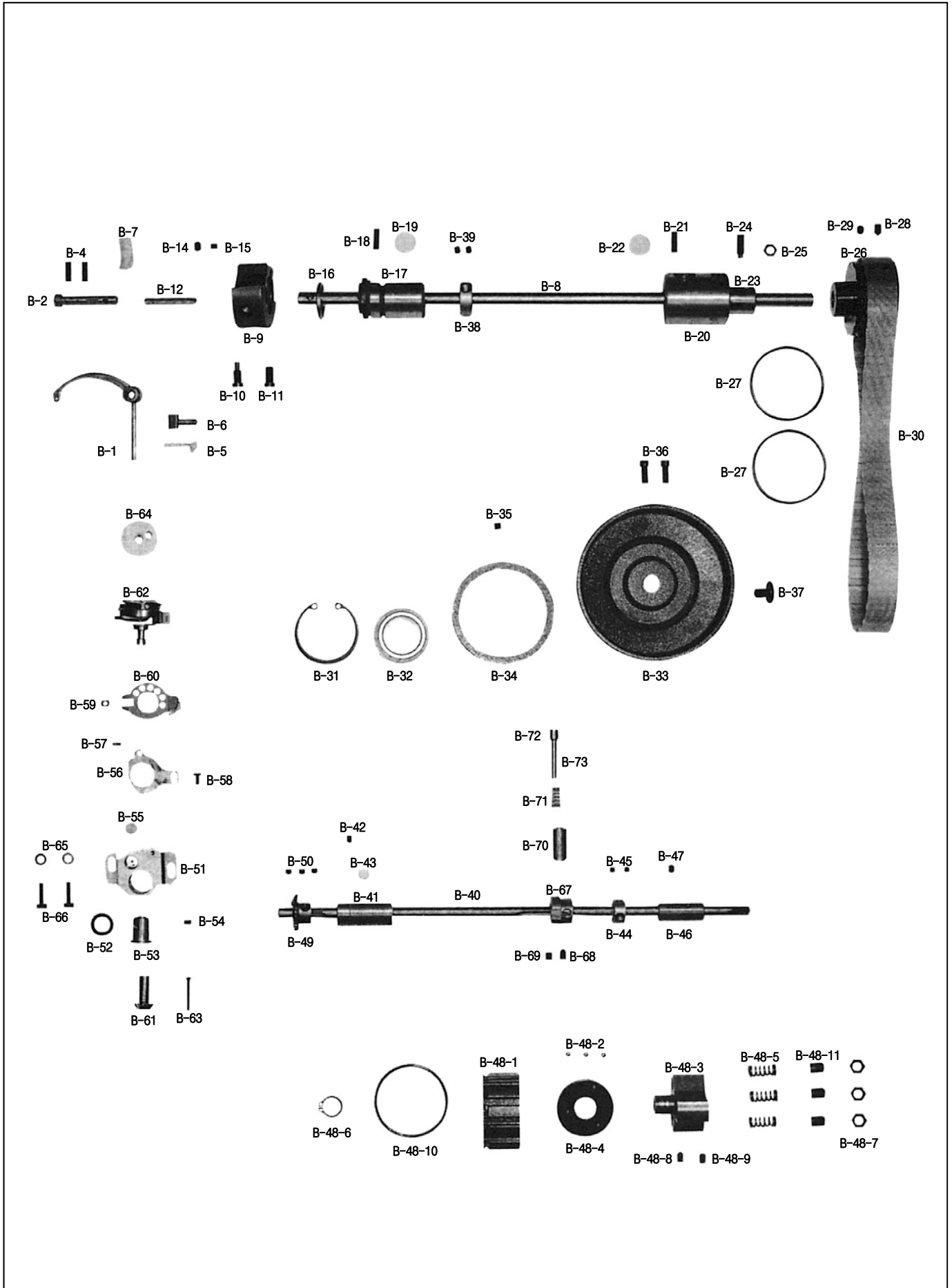
Ref. No.	Parts No.	Note	Name of Parts	품 명	Q'ty	Applied Period
A-1	01-001A-3900	BL	Arm Cylinder Bed	암, 실린더 베드	1Set	
A-1-1	CAB-BA000400	BL	Base	두부받침	1	
A-2	CMB-BJ005600		Face Plate	면판	1	
A-3	DSC-FA017200		Screw(Upper) For A-2	면판침나사(상)	1	
A-4	DWS-CB000600		Washer(Upper) For A-2	면판와셔	1	
A-5	DSC-BA000900		Screw (9/64"n=40)	홈볼이 냄비 작은나사(9/64"n=40)	1	
A-6	CMB-LA015300		Thread Take Up Cover	실채기 카바	1	
A-7	DSC-BA000900		Screw (9/64"n=40)	홈볼이 냄비 작은나사(9/64"n=40)	2	
A-8	CMB-LA014900		Top Cover	윗뚜껑	1	
A-9	DSC-BF003600		Screw (11/64"n=40)	홈볼이 납작 작은나사(11/64"n=40)	4	
A-10	CMB-HK007600		Top Cover Thread Guide	윗실겅이	1	
A-11	DSN-AA000700		Nut (15/64"n=28)	육각너트(15/64"n=28)	1	
A-12	CMB-HK007300		Three Hole Thread Guide Plate	세구멍 실겅이	1	
A-13	CMB-HK007400		Arm Thread Guide Plate(U)	실겅이(상)	1	
A-14	DSC-BJ001300		Screw (9/64"n=40)	홈볼이동근납작작은나사(9/64"n=40)	1	
A-15	CMB-HK007500		Arm Thread Guide Plate (M)	실겅이(하)	1	
A-16	DSC-BJ001300		Screw (/64"n=40)	홈볼이동근납작작은나사(9/64"n=40)	1	
A-17	CMB-HK005500		Arm Thread Guide Plate (L)	아암 실안내(하)	1	
A-18	DSC-BJ001300		Screw (9/64"n=40)	홈볼이동근납작작은나사(9/64"n=40)	1	
A-19	CLB-BG003800		Holder For Upper Thread Oil Supply Felt	윗실 급유 헬트잡이	1	
A-20	DSC-BJ001600		Screw (3/32"n=56)	홈볼이동근납작작은나사(3/32"n=56)	2	
A-21	CLB-JL008800		Felt (Upper Thread)	윗실 급유헬트	1	
A-22	DPK-CB001101		Rubber Cap	고무마개(Hole)	1	Aug.22.11
A-23	AST-PS000500		Bed Hinge(Ass'y)	베드힌지 (조)	1Set	
A-24	PSC-AC002600		Screw (M8×1.25)	육각구멍볼이 보울트(M8×1.25)	8	
A-25	CMB-LD006500		Brand Mark	상표마크 (암부)	1	
A-26	CMB-LD006600	BL	Model Mark	모델마크 (KM-390BL)	1	
A-27	CMB-BJ005700		Latch	두부고정쇠	1	
A-28	DSC-FD000300		Screw For A-27	무릎올림봉 단나사	1	
A-29	DSC-AD000100		Bolt For A-27	두부고정 나비볼트	1	
A-30	DWS-AA015400		Washer For A-27	두부고정와셔	1	
A-31	CGA-GA001700	BL	Needle Plate	침판	1	
A-32	DSC-BC000900		Screw (11/64"n=40)	홈볼이동근접시작은나사(11/64"n=40)	2	
A-33	CMB-BJ005900	BL	Slide Plate(Ass'y)	미끄럼판 (조)	1	
A-34	CMB-BF000200	BL	Guide(A) For A-33	미끄럼판안내 (A)	1	
A-35	DSC-BB000800		Screw (9/64"n=40)	접시머리 보울트(9/64"n=40)	2	
A-36	CMB-BF000300	BL	Guide (B) For A-33	미끄럼판안내 (B)	1	
A-37	DSC-BB000800		Screw (9/64"n=40)	접시머리 보울트(9/64"n=40)	2	
A-38	CMB-LA016900	BL	Cap For Bed	베드캡	1	
A-39	DBS-DB006600	BL	Guide Bush For Lower Shaft	하축안내 붓싱	1	
A-40	DSC-CB002400	BL	Screw (1/8"n=44)	육각구멍볼이 멈춤나사(1/8"n=44)	1	
A-41	DSC-BA000700		Screw (3/16"n=32)	홈볼이 냄비 작은나사(3/16"n=32)	2	
A-42	PPN-AF002800		Pin For A-38	베드카바 고정핀 (SPP:3D×12L)	2	
A-43	DSC-FG002100		Guide Shaft For Feed Rock Shaft	수평밀대 안내축	1	
A-44	DSN-AA000400		Nut (15/64"n=28)	육각너트 (15/64"n=28)	1	
A-45	CLB-JL009100		Lock Shaft Front Felt	수평밀대 (전) 헬트	1	
A-46	AMB-PS002900	BL	Hook Cover (Ass'y)	훅 커버(조)	1Set	
A-47	CFA-BJ001100	BL	Length Control Plate	문자판	1	
A-48	DSC-BB002000		Screw (9/64"n=40)	홈볼이동근납작작은나사(9/64"n=40)	4	
A-49	ATA-PS003200		Thread Tension Control (Ass'y)	실 조절 장치(560구 사양)	1Set	
A-50	DSC-BJ000200		Screw (11/64"n=40)	홈볼이동근납작작은나사(11/64"n=40)	1	
A-52	PPN-AD000100		Pin For A-51	번호판 핀	2	
A-53	DSC-BJ000300		Screw(9/64"n=40)	홈볼이동근납작작은나사(9/64"n=40)	1	
A-54	CTA-BJ001900		Stopper For A-49	실조절장치 스톱퍼	1	
A-55	DSC-BJ001400		Screw (9/64"n=40)	홈볼이동근납작작은나사(9/64"n=40)	1	
A-56	DSC-BJ001300		Screw (9/64"n=40)	훅커버 고정나사	2	
A-57	CMB-LD007700		Model Mark (KM-390)	모델마크(KM-390)	1	

NOTE:
"BL" is a parts only for model KM-390BL.

B

Upper and Upright Shaft Mechanism

상축 및 세운축 관계



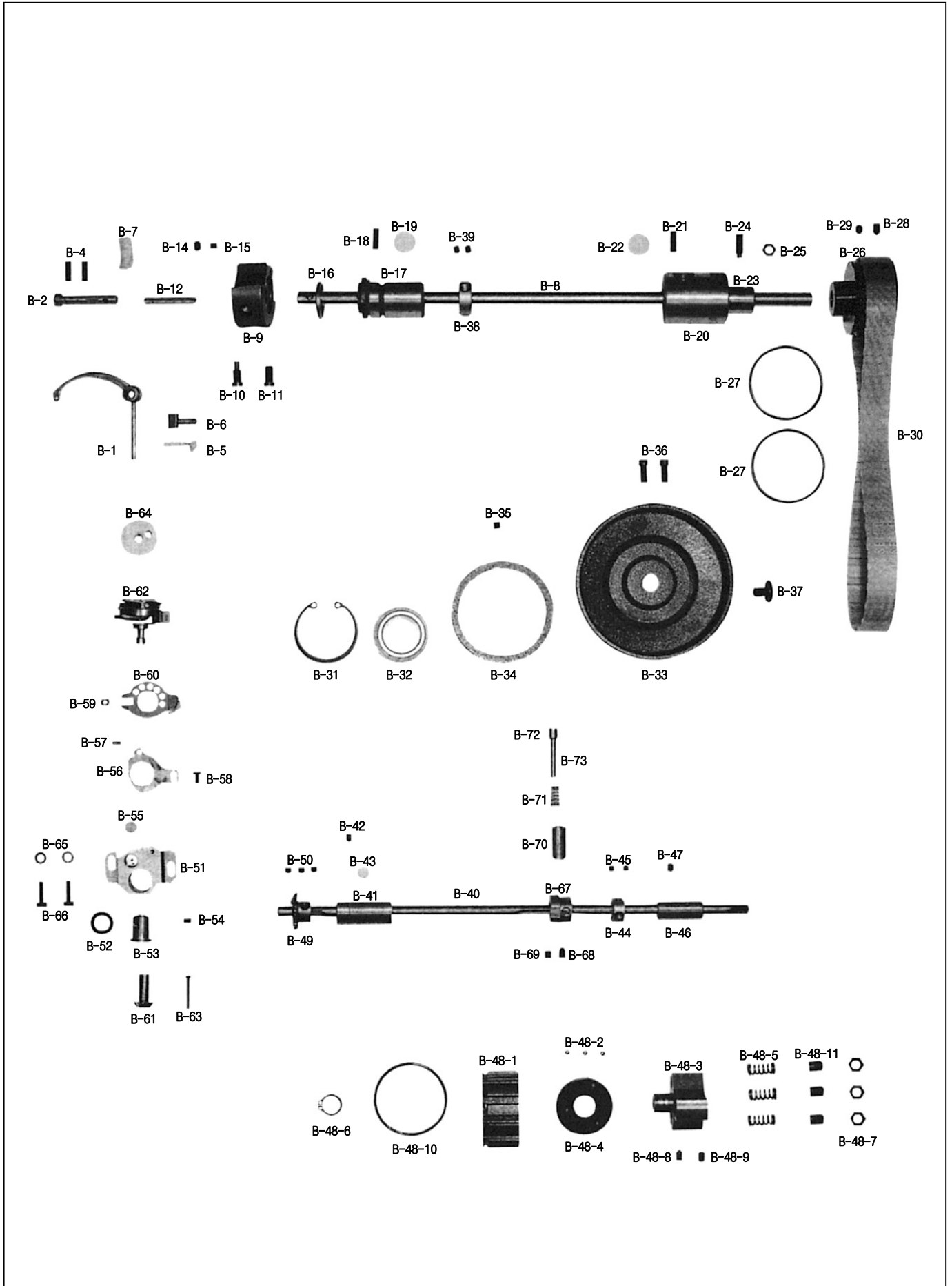
Ref. No.	Parts No.	Note	Name of Parts	품 명	Q'ty	Applied Period
B-1	CTH-HJ002000	BL	Thread Take Up Lever	실채기	1	
B-2	DPN-AA013200		Hinge Pin for B-1	실채기 핀	1	
B-4	DSC-CA000800		Screw (15/64"n=28)	홈볼이 멈춤나사 (15/64"n=28)	2	
B-5	CTH-BF000100		thread Take Up Lever Holder	실채기 잡이	1	
B-6	CLB-JL000800	BL	Oil Felt	절환기 헬트	1	
B-7a	CLB-JL003000	BL	Felt For B-1	축 몸전체붓싱 헬트 (6-19)	1	
B-8	CUS-KC002000		Upper Shaft	상축	1	
B-9	CUS-DA002100		Link Cam	링크 캠	1	
B-10	DSC-BJ003700	BL	Screw (9/32"n=28)	홈볼이동근납작작은나사 (9/32"n=28)	1	
B-11	DSC-BF011500	BL	Screw (9/32"n=28)	홈볼이 납작 작은나사 (9/32"n=28)	1	
B-12	DPN-AA008801	BL	Needle Bar Crank Shaft	링크 캠 핀	1	
B-14	DSC-CA001100	BL	Screw (1/4"n=40)	홈볼이 멈춤나사 (1/4"n=40)	1	
B-15	DSC-CA001900	BL	Screw (1/4"n=40)	홈볼이 멈춤나사 (1/4"n=40)	1	
B-16	DCL-BB002400	BL	Link Cam Stopper Ling	상축 앞 붓싱 링	1	
B-17	DBS-DB006100	BL	Upper Shaft Front Bushing	상축 전 붓싱	1	
B-18	DSC-CA000800		Screw (15/64"n=28)	홈볼이 멈춤나사 (1/4"n=40)	1	
B-19	CLB-JL006600		Felt For B-17	상축 앞 붓싱 헬트	1	
B-20	DBS-DA023500		Upper Shaft Middle Bushing	상축 중 붓싱	1	
B-21	DSC-CA000800		Screw (15/64"n=28)	홈볼이 멈춤나사 (15/64"n=28)	1	
B-22	CLB-JL006600		Felt For B-20	상축 앞 붓싱 헬트	1	
B-23	DBS-DA025100		Feed Regulator Bushing	피드 조절 붓싱	1	
B-24	DSC-CA002100		Screw (9/32"n=28)	홈볼이 멈춤나사 (9/32"n=28)	1	
B-25	DSN-AA002200		Nut (9/32"n=28)	육각너트 (9/32"n=28)	1	
B-26	DPL-BA000500		Timming Belt Pulley (Up)	타이밍 벨트 폴리 (상)	1	
B-27	DSR-AK000500	BL	Ring For B-26	후렌치	2	
B-28	DSC-CB001800		Screw (1/4"n=40)	육각구멍볼이 멈춤나사 (1/4"n=40)	1	
B-29	DSC-CB000400		Screw (1/4"n=40)	육각구멍볼이 멈춤나사 (1/4"n=40)	1	
B-30	PBT-BA000300		Timming Belt	타이밍 벨트 (13749)	1	
B-31	PSR-AB000200	BL	Stop Ring (×47)	베어링 스텝링 (×47)	1	
B-32	PBR-AA008500		Bearing (6204 zz)	6204 베어링	1	
B-33	DPL-AA001001		Pulley	폴리	1	
B-34	CUS-BN000100		Pulley Ring	폴리 링	1	
B-35	DSC-CA000500		Screw (1/4"n=40)	홈볼이 멈춤나사 (1/4"n=40)	1	
B-36	DSC-BF000800		Screw (15/64"n=28)	홈볼이납작작은나사 (15/64"n=28)	2	
B-37	DSC-BG000200		Screw (5/16"n=24)	홈볼이바인딩작은나사 (5/16"n=24)	1	
B-38	DCL-AA007200		Collar For B-17	상축 카라	1	
B-39	DSC-CA000500		Screw (1/4"n=40)	홈볼이 멈춤나사 (1/4"n=40)	2	
B-40	CLS-KF000600		Lower Shaft	하축	1	
B-41	DBS-DA023700		Lower Shaft Front Bushing	하축 전 붓싱	1	
B-42	DSC-CA000800		Screw (15/64"n=28)	홈볼이 멈춤나사 (15/64"n=28)	1	
B-43	CLB-JL008900		Felt For B-41	상축후 붓싱 급유 헬트	1	
B-44	DCL-AA007900		Collar For B-40	하축 카라	1	
B-45	DSC-CA001700		Screw (15/64"n=28)	홈볼이 멈춤나사 (15/64"n=28)	2	
B-46	DBS-DA023800		Lower Shaft Rear Bushing	하축 후 붓싱	1	
B-47	DSC-CA000800		Screw (15/64"n=28)	홈볼이 멈춤나사 (15/64"n=28)	1	
B-48-1	DPL-BA000600	BL	Safety Clutch Belt Pulley	안전장치 벨트 폴리	1	
B-48-2	PBR-AD000900	BL	Safety Clutch Driving Ball	안전장치 크러치 구동용볼 (7/3)	3	
B-48-3	CLS-BA000200	BL	Safety Clutch Collar	안전장치 카라 (K2553)	1	
B-48-4	CLS-BJ001000		Safety Clutch Disc	안전장치 크러치판 (K2542)	1	
B-48-5	DSP-AA009600		Safety Clutch Ball Spring	안전장치 스프링	3	
B-48-6	CLS-BJ001100		Stop -Ring For B-48-3 (×16)	안전장치 카라 스텝링 (STW16)	1	
B-48-7	PSN-AA003600		Nut For B-48-7	안전장치 스프링 조정나사 너트	3	
B-48-8	DSC-CB001800		Screw (1/4"n=40)	육각구멍볼이 멈춤나사(1/4"n=40)	1	
B-48-9	DSC-CB000400		Screw (1/4"n=40)	육각구멍볼이 멈춤나사(1/4"n=40)	1	
B-48-10	DSR-AK000500		Ring For B-48-1	안전장치 벨트 폴리 링	1	
B-48-11	DSC-CA004200		Screw (M10×1.25)	홈볼이 멈춤나사 (M10×1.25)	3	
B-49	DGR-AD001000		Lower Shaft Gear	하축기어 (13733)	1	

NOTE:
"BL" is a
parts only for
model KM-390BL

B

Upper and Upright Shaft Mechanism

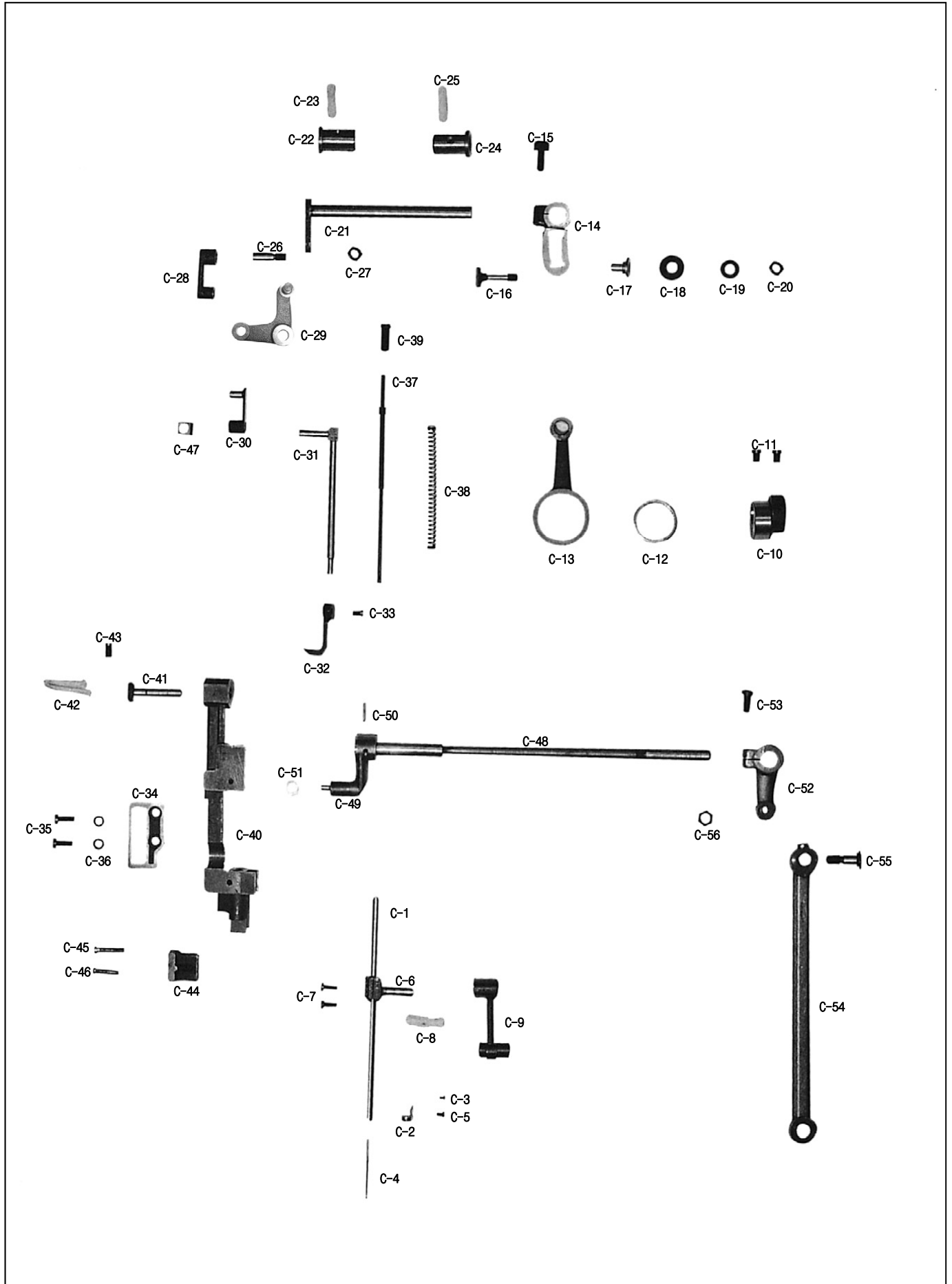
상축 및 세운축 관계



C

Needle Bar and Upper Feed Mechanism

바늘대 및 상피이드 관계





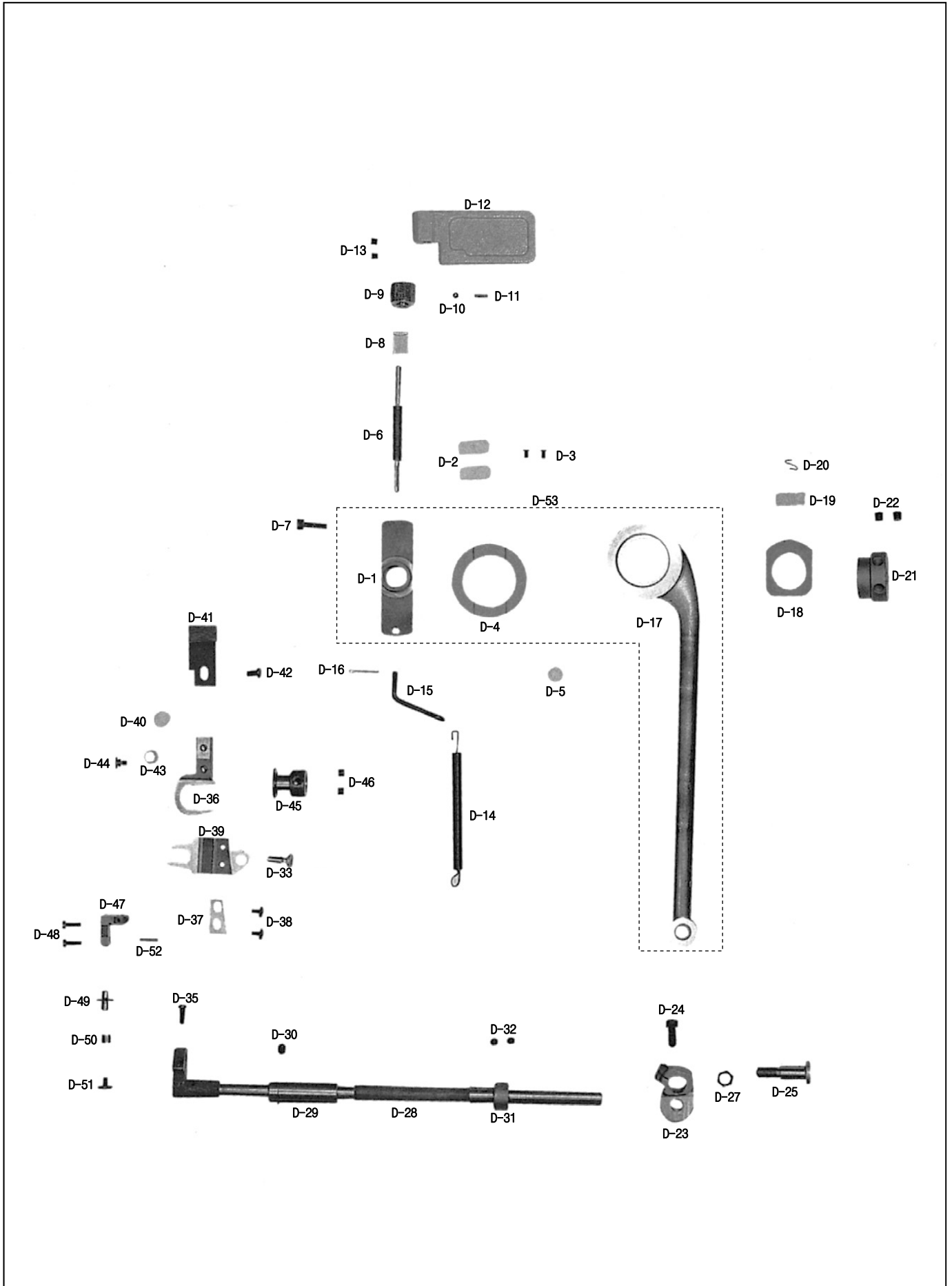
Ref. No.	Parts No.	Note	Name of Parts	품 명	Q'ty	Applied Period
C-1	CNB-KA002000	BL	Needle Bar	바늘대	1	
C-2	CNB-HK001500	BL	Needle Guide For Needle Bar	바늘대 실안내	1	
C-3	DSC-BJ002200	BL	Screw (3/32"n=56)	훅볼이 바인딩 작은나사 (3/32"n=56)	1	
C-4	-	BL	Needle	바늘	1	
C-5	DSC-BJ004300	BL	Screw (9/64"n=4)	훅볼이동근납작작은나사 (9/64"n=40)	1	
C-6	CNB-BF001800	BL	Needle Bar Holder	바늘대잡이	1	
C-7	DSC-BJ000300	BL	Screw (9/64"n=40)	훅볼이동근납작작은나사 (9/64"n=40)	2	
C-8	CLB-JL000800	BL	Oil Felt	질환기 펠트	1	
C-9	CTH-CC001400	BL	Needle Bar Crank	바늘대 크랭크	1	
C-10	CUF-DC000400		Upper Feed Lifting Eccentric Cam	노루발 상하운동 캠	1	
C-11	DSC-BJ002000		Screw For C-10	노루발 상하운동 캠 고정나사	2	
C-12	PBR-BA002800		Needle Bearing	니어들 베어링	1	
C-13	CUF-CC001500		Upper Feed Lifting Cam Lod	노루발 상하운동 캠 로드	1	
C-14	CUF-CB001900		Upper Feed Eccentric Wheel Crank	상하운동 크랭크 (K2556)	1	
C-15	DSC-AA000700		Screw (1/4"n=28)	육각 보울트 (1/4"n=28)	1	
C-16	CUF-KZ000700		Upper Feed Lifting Adjusting Shaft	노루발 상하운동 조절축	1	
C-17	DBS-DB006700		Bushing For C-16	노루발 상하운동 조절축 붓싱	1	
C-18	15-009A-5607		Collar For C-16	노루발 상하운동 조절축 카라	1	
C-19	CUF-KZ000501		Washer For C-16	노루발 상하운동 조절축 와셔	1	
C-20	DSN-AA000500		Nut (1/4"n=40)	육각너트 (1/4"n=40)	1	
C-21	CUF-KZ000501		Upper Feed Driving Shaft	상하운동축	1	
C-22	DBS-DB006200		Front Bushing For C-21	상하운동축 전붓싱	1	
C-23	CLB-JL009000		Felt For C-22	상하운동축 전붓싱 펠트	1	
C-24	DBS-DB006300		Rear Bushing For C-21	상하운동축 후붓싱	1	
C-25	CLB-JL009000		Felt For C-24	상하운동축 후붓싱 펠트	1	
C-26	DSC-FF001900		Stud Screw For Connection Link	상피이드 연결 링크 축나사	1	
C-27	DSN-AA000500		Nut (1/4"n=40)	육각너트 (1/4"n=40)	1	
C-28	CUF-CA001500		Connecting Link For Upper Feed Lifting	상피이드 연결링크	1	
C-29	CUF-CA001700		Link For Upper Feed Foot	상피이드 노루발 연결링크	1	
C-30	CUF-CA001800		Walking Bar Driving Link	상피이드 노루발 운동링크	1	
C-31	CUF-CR000100		Walking Bar	상피이드 노루발대	1	
C-32	CGA-GC002800		Upper Feed Presser Foot	상피이드 노루발(D)	1	
C-33	DSC-BA001000		Screw (11/64"n=40)	훅볼이 냄비 작은나사 (11/64"n=40)	1	
C-34	CNB-BK001200		Walking Bar Guide Plate	노루발대 안내판 (K2555)	1	
C-35	DSC-BF003100		Screw (11/64"n=40)	훅볼이 납작 작은나사 (11/64"n=40)	2	
C-36	DWS-AA001100		Washer For C-34	뒷뚜껑 칩 와셔	2	
C-37	CUF-KF000300		Walking Foot Pressure Adjusting Pole	상피이드 노루발 압력봉	1	
C-38	DSP-AA009400		walking Foot Pressure Spring	상피이드 노루발 압력스프링	1	
C-39	DSC-BF003500		Screw (5/16"n=28)	훅볼이 납작 작은나사 (5/16"n=28)	1	
C-40	CNB-BC000700	BL	Needle Bar Frame	바늘대 후레임	1	
C-41	DPN-AD008500		Hinge Pin For C-40	바늘대 후레임 힌지핀	1	
C-42	CLB-JD000300		Wick	유심	1	
C-43	DSC-CA000800		Screw (15/64"n=28)	훅볼이 멈춤나사 (15/64"n=28)	1	
C-44	CNB-BK001300		Guide For Needle Bar Frame	바늘대 후레임 안내판	1	
C-45	DSC-BJ005300		Screw (A) For C-44	바늘대 후레임 안내판침나사B	1	
C-46	DSC-BA001100		Screw (11/64"n=28)	훅볼이 냄비 작은나사 (11/64"n=28)	1	
C-47	CUF-CD000200		Walking Bar Guide Block	상피이드 노루발 안내블럭	1	
C-48	CNB-KF000400		Needle Bar Frame Driving Shaft	바늘대 후레임 요동축	1	
C-49	CNB-CB000400		Needle Bar Frame Shaft Crank (F)	요동축 크랭크 (전)	1	
C-50	DPN-AB000300		Pin For C-49	요동축 크랭크 전 고정핀	1	
C-51	CNB-CD001100		Needle Bar Frame Block	바늘대 후레임 블럭	1	
C-52	CUF-CB002000	BL	Needle Bar Rock Crank	바늘대 요동 크랭크	1	
C-53	DSC-BJ000600		Screw (15/64"n=28)	훅볼이동근납작작은나사 (15/64"n=28)	1	
C-54	CUF-CC001700	BL	Connecting Rod For C-48	요동축 연결로드	1	
C-55	DSC-FA015600		Stud Screw For C-52	노루발 상하 운동축 크랭크 단나사	1	
C-56	DSN-AA000400		Nut (15/64"n=28)	육각너트 (15/64"n=28)	1	

NOTE:
"BL" is a parts only for model KM-390BL

D

Lower Shaft and Lower Feed Mechanism

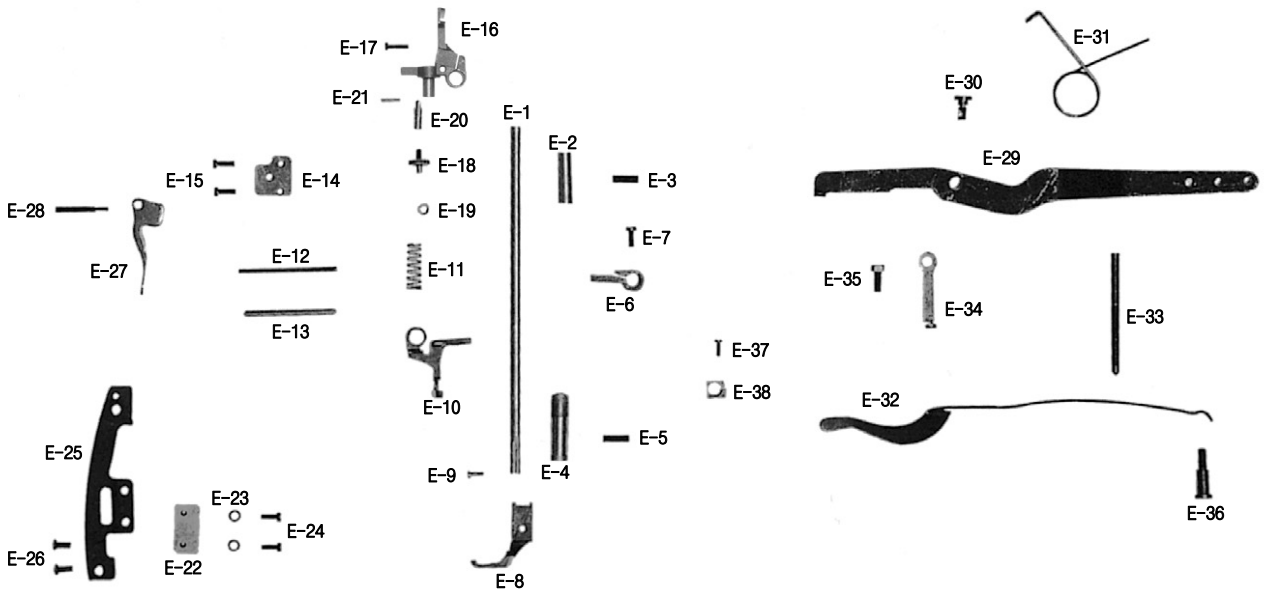
하축 및 하피이드 관계



E

Presser Foot and Knee Lifting Mechanism

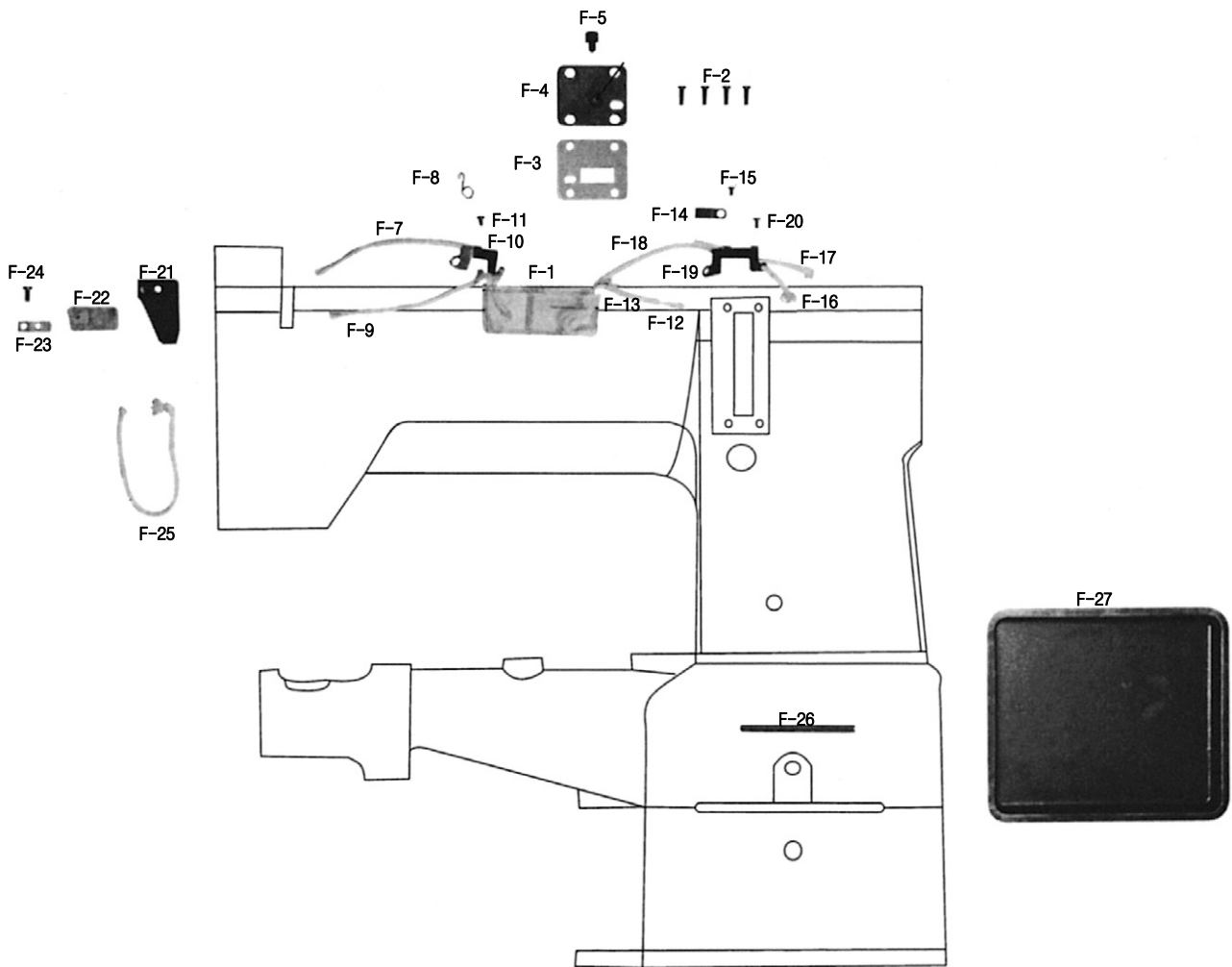
노루발 및 무릎올림 관계

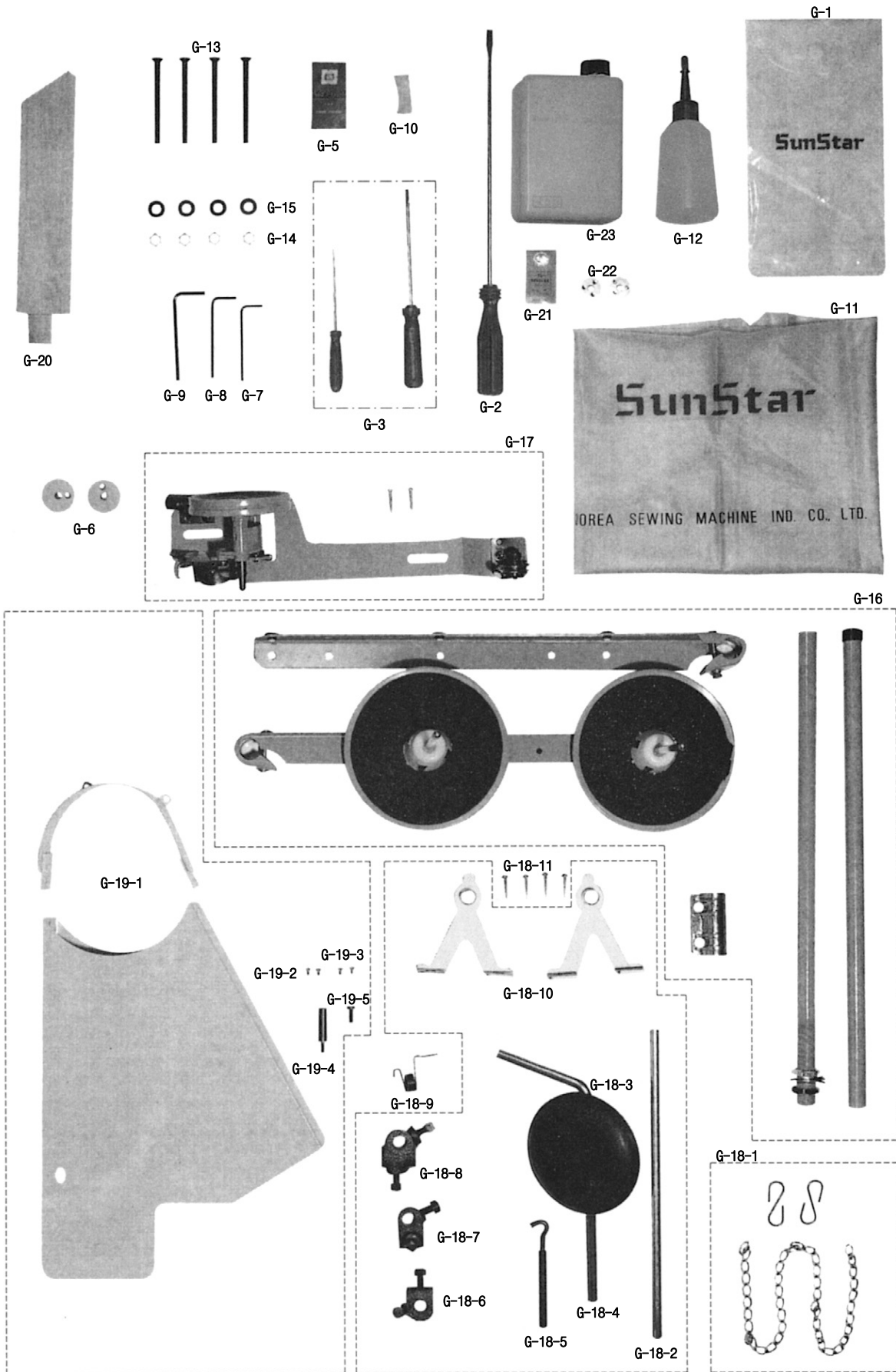


F

Lubrication Mechanism

급유 관계

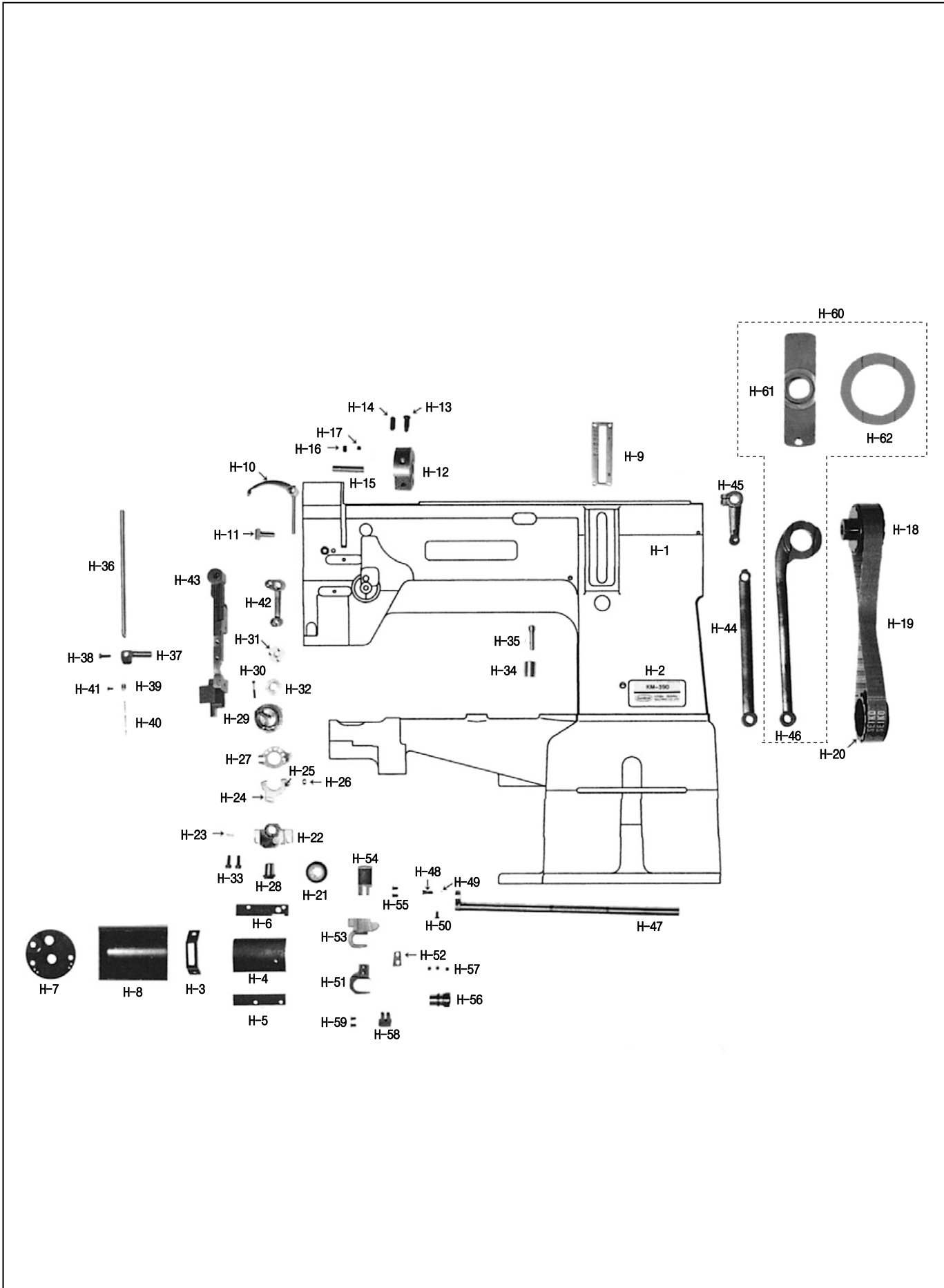






Special Parts for KM-390 Mechanism

KM-390 전용 부품 관계



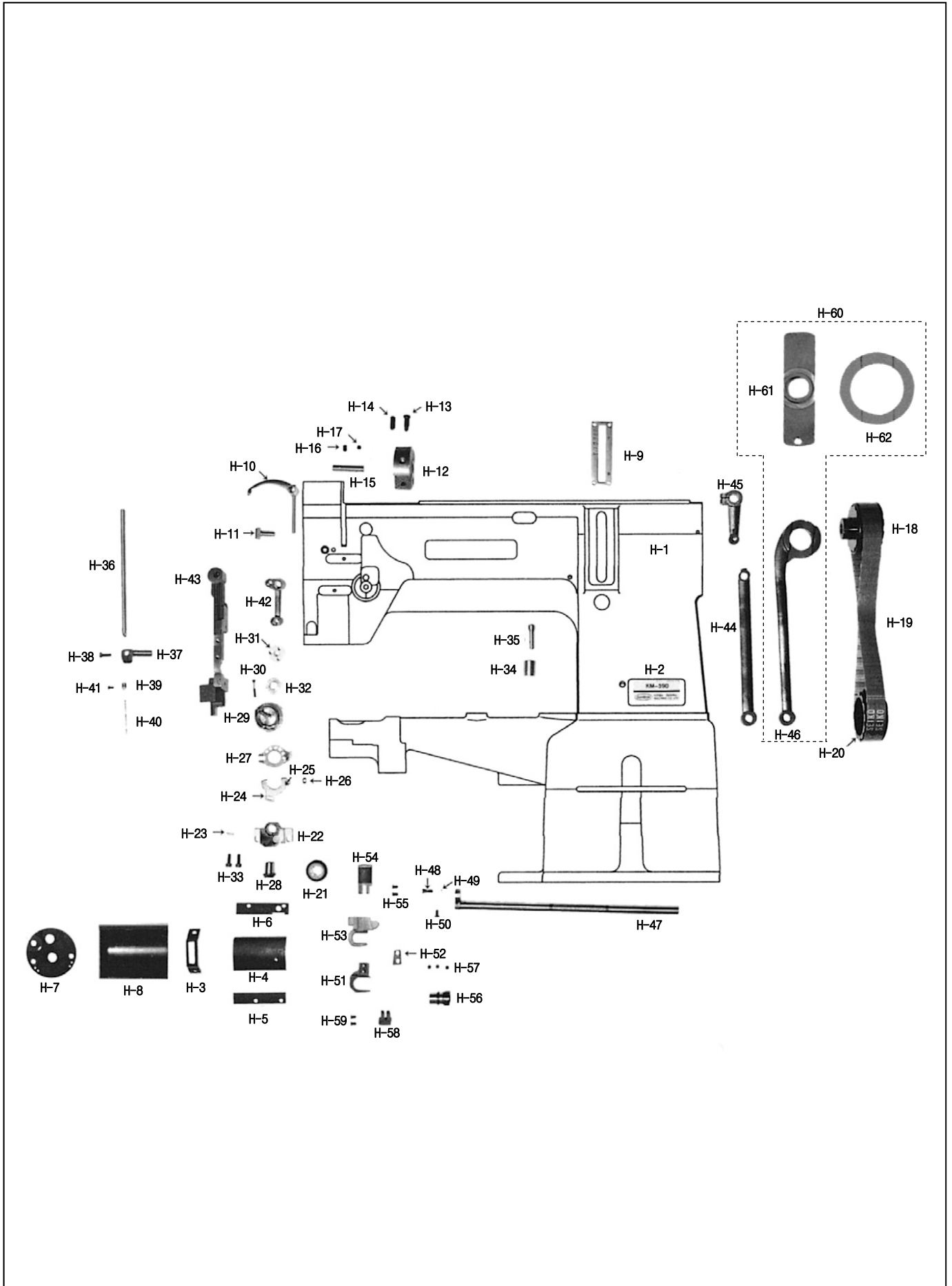
Ref. No.	Parts No.	Note	Name of Parts	품 명	Q'ty	Applied Period
H-1	01-001A-390A		Arm, Cylinder Bed, Base	아암, 실린더 베드, 두부받침 (조)	1Set	
H-2	CMB-LD006700		Model Mark	모델마크	1	
H-3	CGA-GA004100		Needle Plate	침판	1	
H-4	CMB-BJ005900		Slide Plate (Ass'y)	미끄럼판 (조)	1Set	
H-5	CMB-BF000400		Guide (A) for H-4	미끄럼판 안내 (A)	1	
H-6	CMB-BF000500		Guide (B) for H-4	미끄럼판 안내 (B)	1	
H-7	AMB-PS003500		Cap for Bed	베드캡	1	
H-8	AMB-PS003700		Hook Cover (Ass'y)	훅커버(조)	1Set	
H-9	CFA-BJ001200		Length Control Plate	문자판	1	
H-10	CTH-HJ002500		Thread Take -Up Lever	실채기	1	
H-11	CTH-BF000200		Thread Take -Up Lever Holder	실채기 잡이	1	
H-12	CUS-DA003200		Link Cam	링크캠	1	
H-13	DSC-BJ003700		Screw (A) for H-12	링크캠 고정나사	1	
H-14	DSC-CA002100		Screw (B) for H-12	링크캠 침나사	1	
H-15	DPN-AA014800		Needle Bar Crank Shaft	바늘대 크랭크 축	1	
H-16	DSC-CA000800		Screw (A) for H-15	바늘대 크랭크 축 고정나사(A)	1	
H-17	DSC-CA000800		Screw (B) for H-15	바늘대 크랭크 축 고정나사(B)	1	
H-18	DPL-BA000500		Timing Belt Pulley (Up)	타이밍 벨트 풀리 (상)	1	
H-19	PBT-BA000400		Timing Belt	타이밍 벨트	1	
H-20	DPL-BA000600		Safety Clutch Belt Pulley	안전장치 벨트 풀리	1	
H-21	DGR-AD001200		Lower Shaft Gear	하축 기어	1	
H-22	CHB-BA001100		Hook Base	훅 받침	1	
H-23	CLB-JL011600		Hook Gear Felt	훅축 기어 헬트	1	
H-24	CHB-BA001200		Base for Opener Guide Block Shaft	오프너 안내 블럭축 베이스	1	
H-25	DPN-BC004900		Shaft for Opener Guide Block	오프너 안내 블럭축	1	
H-26	CHB-CD000200		Guide Block for Opener	오프너 안내 블럭	1	
H-27	CHB-HN000400		Opener	오프너	1	
H-28	DGR-AD001300		Rotary Hook Gear (Ass'y)	로타리 훅 기어	1	
H-29	CHK-HA002300		Rotary Hook	로타리 훅	1	
H-30	DSC-BB004300		Screw for H-29	로타리 훅 고정나사	1	
H-31	CHK-HB001100		Bobbin	보빈	1	
H-32	DSP-BA002800		Spring for Bobbin	보빈 받침 스프링	1	
H-33	DSC-AA002800		Screw for H-22	훅받침 침 나사	2	
H-34	DBS-DA028200		Bushing for B-72	안전 장치 래치트 버튼 붓싱	1	
H-35	DPN-BC004800		Button for B-67	안전 장치 래치트 버튼	1	
H-36	CNB-KA003500		Needle Bar	바늘대	1	
H-37	CNB-BF002200		Needle Bar Holder	바늘대 잡이	1	
H-38	DSC-BF010100		Screw (11/64"n=40)	훅볼이 납작 작은나사 (11/64"n=40)	1	
H-39	CNB-HK002300		Thread Guide for Needle Bar	바늘대 실안내	1	
H-40	-		Needle (DP×17#22)	바늘	1	
H-41	DSC-BF000100		Screw for H-38	바늘 고정나사	1	
H-42	CTH-CJ001500		Needle Bar Crank	바늘대 크랭크	1	
H-43	CNB-BC001200		Needle Bar Frame	바늘대 후레임	1	
H-44	CUF-CC002100		Connecting Rod for C-48	요동축 연결로드	1	
H-45	CUF-CB002700		Needle Bar Rock Crank	바늘대 요동 크랭크	1	
H-46	CNB-CC000800		Feed Rock Shaft Connecting Rod	수평이송로드	1	
H-47	GP-035168-00		Feed Rock Shaft	수평밀대	1	
H-48	DSC-BB004500		Feed Lifter Stud	톱니받침 축 나사	1	
H-49	DPN-AA014900		Feed Lifter Stud Presser	톱니받침 축 나사 누름봉	1	
H-50	DSC-BJ001400		Screw for H-46	톱니받침 축 나사 고정나사	1	
H-51	CLF-BA001301		Feed Lifter Fork	톱니받침 포오크	1	
H-52	CLF-BK000600		Feed Lifter Fork Guide	톱니받침 포오크 안내	1	
H-53	CLF-BA001201		Feed Lifter	톱니받침	1	
H-54	CGA-GB003200		Feed Dog	톱니	1	
H-55	DSC-BA001000		Screw (11/64"n=40)	훅볼이 냄비 작은나사 (11/64"n=40)	2	
H-56	CLF-DC002700		Vertical Feed Eccentric Cam	상하편심캠	1	
H-57	DSC-CB000700		Screw for H-53	상하편심캠 고정나사	3	

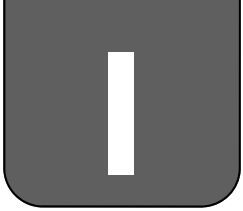
NOTE:
"BL" is a
parts only for
model KM-390BL



Special Parts for KM-390 Mechanism

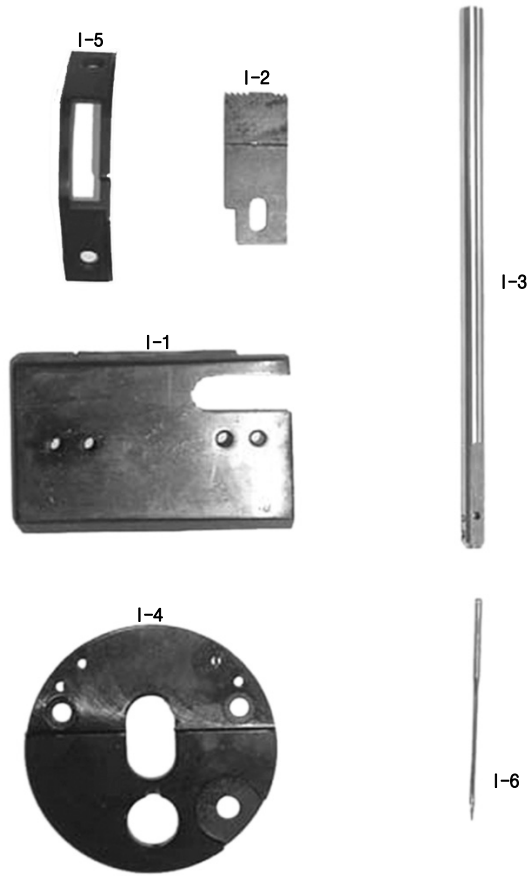
KM-390 전용 부품 관계



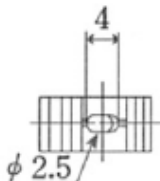
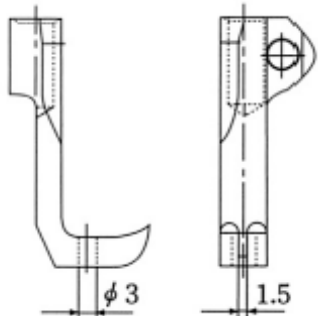
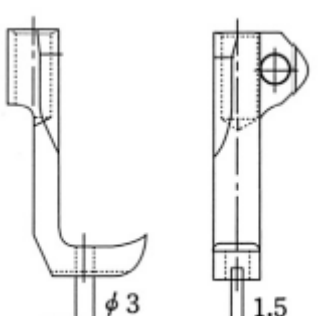
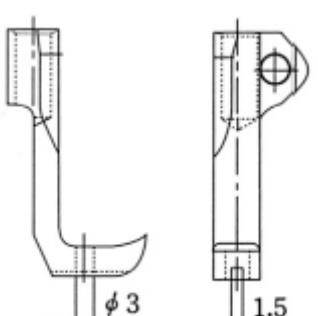
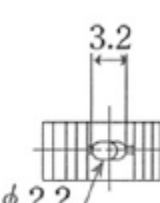
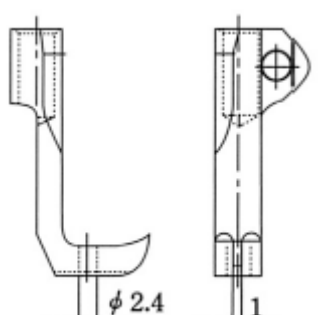
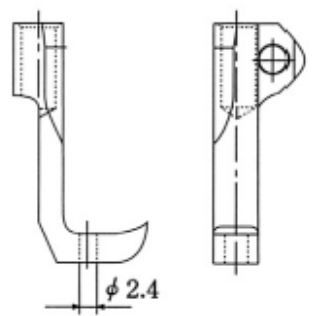


Special Parts for KM-390BLS Mechanism

KM-390BLS 전용 부품 관계



KM-390BL

Feed Dog (톱니)			Upper Feed Presser Foot (상피이드 노루발)		
Ref. No.	Parts No.	Specification	Ref. No.	Parts No.	Specification
D-41	CGA-GB003300	Standard Parts 	C-32	CGA-GC005700	Standard Parts 
		Option Parts 			Option Parts 
	CGA-GB001800	Option Parts 		CGA-GC005800	Option Parts(1) 
				CGA-GC005900	Option Parts(2) 

*If You Wish to Use Special Order Parts, Use "Parts No." Above The Chart to Order It.



Index

Parts No.	Name of Parts	Page	Ref.No.	Parts No.	Name of Parts	Page	Ref.No.	Parts No.	Name of Parts	Page	Ref.No.
01-001A-3900	Arm Cylinder Bed	7	A-1	CLB-JD0003	Oil Tank Cork	19	F-5	CMB-HK0075	Arm Thread Guide Plate (M)	7	A-15
01-001A-390A	Arm, Cylinder Bed, Base	23	H-1	CLB-JD0003	Oil Wick	19	F-9	CMB-HK0076	Top Cover Thread Guide	7	A-10
01-019A-3900	Cap for Bed - Option Gauge (①)	27	I-4	CLB-JD0003	Oil Wick	19	F-12	CMB-LA0149	Top Cover	7	A-8
01-215A-3900	Needle Plate - Option Gauge (①)	27	I-5	CLB-JD0003	Oil Wick	19	F-16	CMB-LA0153	Thread Take Up Cover	7	A-6
06-031A-3900	Roller For D-49	15	D-50	CLB-JD0003	Oil Wick	19	F-17	CMB-LA0169	Cap For Bed	7	A-38
06-224A-3900	Feed Dog - Option Gauge (①)	27	I-2	CLB-JD0003	Oil Wick	19	F-25	CMB-LD0065	Brand Mark	7	A-25
15-009A-5607	Collar For C-16	13	C-18	CLB-JD0003	Wick	13	C-42	CMB-LD0066	Model Mark	7	A-26
43-006A-3900	Knee Lifting Chain (Ass'y)	21	G-18-1	CLB-JG0003	Oil Return Tube	19	F-7	CMB-LD0067	Model Mark	23	H-2
43-112C-3800	Connecting Hook For G-18-1	21	G-18-5	CLB-JG0003	Oil Return Tube	19	F-13	CMB-LD0077	Model Mark (KM-390)	7	A-57
AAC-PS0001	Bobbin Winder (Ass'y)	21	G-17	CLB-JG0003	Oil Return Tube	19	F-18	CNB-BC0007	Needle Bar Frame	13	C-40
ALB-PS0016	Oil Tank (Ass'y)	19	F-1	CLB-JL0008	Oil Felt	9	B-6	CNB-BC0012	Needle Bar Frame	23	H-43
AMB-PS0029	Hook Cover (Ass'y)	7	A-46	CLB-JL0008	Oil Felt	13	C-8	CNB-BF0018	Needle Bar Holder	13	C-6
AMB-PS0034	Belt Cover (Ass'y)	21	G-19-1	CLB-JL0030	Felt For B-1	9	B-7a	CNB-BF0022	Needle Bar Holder	23	H-37
AMB-PS0035	Cap for Bed	23	H-7	CLB-JL0064	Felt For B-1	19	F-22	CNB-BK0012	Walking Bar Guide Plate	13	C-34
AMB-PS0037	Hook Cover (Ass'y)	23	H-8	CLB-JL0066	Felt For B-17	9	B-19	CNB-BK0013	Guide For Needle Bar Frame	13	C-44
AS-007347	Feed Lock Shaft Connecting RodSet	15	D-53	CLB-JL0066	Felt For B-20	9	B-22	CNB-CB0004	Needle Bar Frame Shaft Crank (F)	13	C-49
AST-PS0005	Bed Hinge(Ass'y)	7	A-23	CLB-JL0076	Felt For D-18	15	D-19	CNB-CC0008	Feed Rock Shaft Connecting Rod	23	H-46
ATA-PS0032	Thread Tension Control (Ass'y)	7	A-49	CLB-JL0088	Felt (Upper Thread)	7	A-21	CNB-CD0011	Needle Bar Frame Block	13	C-51
CAB-BA0004	Base	7	A-1-1	CLB-JL0088	Felt (Upper Thread)	21	G-10	CNB-HK0015	Needle Guide For Needle Bar	13	C-2
CAC-JB0001	Oiler	21	G-12	CLB-JL0089	Felt For B-41	9	B-43	CNB-HK0023	Thread Guide for Needle Bar	23	H-39
CAC-JB0002	Oil	21	G-23	CLB-JL0090	Felt For C-22	13	C-23	CNB-KA0020	Needle Bar	13	C-1
CAC-MA0006	Head Cover	21	G-11	CLB-JL0090	Felt For C-24	13	C-25	CNB-KA0035	Needle Bar	23	H-36
CAC-MH0001	Accessory Bag	21	G-1	CLB-JL0091	Lock Shaft Front Felt	7	A-45	CNB-KF0004	Needle Bar Frame Driving Shaft	13	C-48
CFA-BA0001	Feed Regulator	15	D-1	CLB-JL0092	Felt For D-1	15	D-2	CPB-BB0009	Presser Bar Guide Bracket	17	E-16
CFA-BF0003	Holder For D-1	15	D-4	CLB-JL0092	Felt For D-4	15	D-5	CPB-BF0011	Presser Bar Bracket	17	E-6
CFA-BH0002	Hook For D-14	15	D-15	CLB-JL0092	Felt For D-4	15	D-5	CPB-BJ0013	Plate For Roller Guide	17	E-25
CFA-BJ0011	Length Control Plate	7	A-47	CLB-JL0093	Felt For B-51	11	B-55	CPB-BK0004	Guide Bar Bracket Roller	17	E-22
CFA-BJ0012	Length Control Plate	23	H-9	CLB-JL0093	Felt For D-36	15	D-40	CPB-CL0005	Roller For Presser Bracket	17	E-19
CFA-BQ0001	Feed Adjusting Pipe	15	D-8	CLB-JL0116	Hook Gear Felt	23	H-23	CPB-CL0005	Roller Shaft	17	E-20
CFA-CM0016	Reverse Feed Control Lever	15	D-12	CLB-LA0006	Oil Tank Pushing Plate (Ass'y)	19	F-4	CPB-CM0006	Presser Bar Lifter	17	E-27
CFA-KZ0002	Reverse Feed Control Lever Shaft	15	D-6	CLF-BA0008	Feed Lifter	15	D-39	CPB-KB0009	Presser Bar	17	E-1
CGA-GA0017	Needle Plate	7	A-31	CLF-BA0009	Feed Lifting Fork	15	D-36	CPM-BF0002	Presser Bar Plate Spring Rack	17	E-37
CGA-GA0041	Needle Plate	23	H-3	CLF-BA0012	Feed Lifter	23	H-53	CPM-BJ0012	Stopper For Knee Lifting Lever	17	E-34
CGA-GB0018	Feed Dog	15	D-41	CLF-BA0013	Feed Lifter Fork	23	H-51	CPM-BJ0013	Plate Spring For Presser Bar	17	E-32
CGA-GB0032	Feed Dog	23	H-54	CLF-BB0007	Feed Lifting Guide Body	15	D-47	CPM-CM0018	Knee Lifting Lever	17	E-29
CGA-GC0028	Upper Feed Presser Foot	13	C-32	CLF-BB0009	Feed Lifter Guide	25	H-58	CST-BB0041	Bracket For G-18-2	21	G-18-10
CGA-GC0029	Sub Presser Foot	17	E-8	CLF-BK0004	Feed Lifting Fork Guide	15	D-37	CST-CB0002	Knee Lifting Adjusting Crank	21	G-18-8
CHB-BA0006	Hook Base	11	B-51	CLF-BK0006	Feed Lifter Fork Guide	23	H-52	CST-CB0005	Crank For G-18-4	21	G-18-7
CHB-BA0007	Base For Opener Guide Block Shaft	11	B-56	CLF-CA0010	Link For D-17	15	D-18	CST-CB0006	Crank For G-18-5	21	G-18-6
CHB-BA0007	Shaft For Opener Guide Block	11	B-57	CLF-CB0027	Crank (Rear) For D-28	15	D-23	CST-CR0007	Head Rest	21	G-20
CHB-BA0011	Hook Base	23	H-22	CLF-CC0019	Feed Rock Shaft Connecting Rod	15	D-17	CST-FZ0002	Knee Lifting Pad	21	G-18-3
CHB-BA0012	Base for Opener Guide Block Shaft	23	H-24	CLF-DC0014	Feed Cam	15	D-21	CST-JA0028	Oil Pan	19	F-27
CHB-CD0002	Guide Block for Opener	23	H-26	CLF-DC0019	Vertical Feed Eccentric Cam	15	D-45	CST-KC0003	Knee Supporting Shaft	21	G-18-4
CHB-CD0003	Guide Block For Opener	11	B-59	CLF-DC0021	Eccentric Collar For Feed Regulator	15	D-43	CST-KC0010	Knee Lifting Shaft	21	G-18-2
CHB-HN0003	Opener	11	B-60	CLF-DC0027	Vertical Feed Eccentric Cam	23	H-56	CST-MF0001	Thread Stand (Ass'y)	21	G-16
CHB-HN0004	Opener	23	H-27	CLF-KF0009	Vertical Feed Lifting Guide Shaft	15	D-49	CTA-BJ0019	Stopper For A-49	7	A-54
CHK-HA0015	Rotary Hook	11	B-62	CLF-KZ0006	Feed Rock Shaft	15	D-28	CTH-BF0001	thread Take Up Lever Holder	9	B-5
CHK-HA0023	Rotary Hook	23	H-29	CLS-BA0002	Safety Clutch Collar	9	B-48-3	CTH-BF0002	Thread Take -Up Lever Holder	23	H-11
CHK-HB0010	Bobbin	11	B-64	CLS-BJ0010	Safety Clutch Disc	9	B-48-4	CTH-CC0014	Needle Bar Crank	13	C-9
CHK-HB0010	Bobbin	21	G-6	CLS-BJ0011	Stop -Ring For B-48-3 (x16)	9	B-48-6	CTH-CJ0015	Needle Bar Crank	23	H-42
CHK-HB0011	Bobbin	21	G-22	CLS-CS0001	Ratchet For Safety Clutch	11	B-67	CTH-HJ0020	Thread Take Up Lever	9	B-1
CHK-HB0011	Bobbin	21	G-22	CLS-KF0006	Lower Shaft	9	B-40	CTH-HJ0025	Thread Take -Up Lever	23	H-10
CHK-HB0011	Bobbin	23	H-31	CMB-BF0002	Guide(A) For A-33	7	A-34	CTR-BA0002	Tension Release Plate	17	E-14
CLB-BF0004	Holder For F-13	19	F-14	CMB-BF0003	Guide (B) For A-33	7	A-36	CTR-BJ0017	Thread Tension Release (Ass'y)	17	E-10
CLB-BF0006	Holder For F-17	19	F-19	CMB-BF0004	Guide (A) for H-4	23	H-5	CTR-BQ0001	Pipe For E-12	17	E-13
CLB-BF0011	Wick Holder	19	F-10	CMB-BF0005	Guide (B) for H-4	23	H-6	CTR-KC0004	Thread Tension Release Shaft	17	E-12
CLB-BG0038	Holder For Upper Thread Oil Supply Felt	7	A-19	CMB-BJ0056	Face Plate	7	A-2	CUF-CA0015	Connecting Link For Upper Feed Lifting	13	C-28
CLB-BH0004	Hook For F-7	19	F-8	CMB-BJ0057	Latch	7	A-27	CUF-CA0017	Link For Upper Feed Foot	13	C-29
CLB-BH0018	Holder For D-19	15	D-20	CMB-BJ0059	Slide Plate (Ass'y)	23	H-4	CUF-CA0018	Walking Bar Driving Link	13	C-30
CLB-BJ0019	Oil Cover	19	F-21	CMB-BJ0059	Slide Plate(Ass'y)	7	A-33	CUF-CB0019	Upper Feed Eccentric Wheel Crank	13	C-14
CLB-BJ0021	Oil Cover Presser	19	F-23	CMB-HK0055	Arm Thread Guide Plate (L)	7	A-17	CUF-CB0020	Needle Bar Rock Crank	13	C-52
CLB-BQ0003	Oil Pipe For F-1	19	F-4-1	CMB-HK0073	Three Hole Thread Guide Plate	7	A-12	CUF-CB0027	Needle Bar Rock Crank	23	H-45
CLB-FZ0003	Oil Tank Packing	19	F-3	CMB-HK0074	Arm Thread Guide Plate(U)	7	A-13				

Index

Parts No.	Name of Parts	Page	Ref.No.	Parts No.	Name of Parts	Page	Ref.No.	Parts No.	Name of Parts	Page	Ref.No.
CUF-CC0015	Upper Feed Lifting Cam Lod	13	C-13	DSC-BA0001	Screw (9/64"n=40)	21	G-19-2	DSC-BJ0053	Screw (A) For C-44	13	C-45
CUF-CC0017	Connecting Rod For C-48	13	C-54	DSC-BA0001	Screw (9/64"n=40)	21	G-19-3	DSC-CA0003	Screw (3/16"n=28)	11	B-54
CUF-CC0021	Connecting Rod for C-48	23	H-44	DSC-BA0007	Screw (3/16"n=32)	7	A-41	DSC-CA0005	Screw (1/4"n=40)	9	B-35
CUF-CD0002	Walking Bar Guide Block	13	C-47	DSC-BA0007	Screw (3/16"n=32)	19	F-24	DSC-CA0005	Screw (1/4"n=40)	9	B-39
CUF-CR0001	Walking Bar	13	C-31	DSC-BA0009	Screw (9/64"n=40)	7	A-5	DSC-CA0008	Screw (15/64"n=28)	9	B-4
CUF-DC0004	Upper Feed Lifting Eccentric Cam	13	C-10	DSC-BA0009	Screw (9/64"n=40)	7	A-7	DSC-CA0008	Screw (15/64"n=28)	9	B-18
CUF-KF0003	Walking Foot Pressure Adjusting Pole	13	C-37	DSC-BA0009	Screw (9/64"n=40)	19	F-11	DSC-CA0008	Screw (15/64"n=28)	9	B-21
CUF-KZ0005	Upper Feed Driving Shaft	13	C-21	DSC-BA0009	Screw (9/64"n=40)	19	F-20	DSC-CA0008	Screw (15/64"n=28)	9	B-42
CUF-KZ0005	Washer For C-16	13	C-19	DSC-BA0010	Screw (11/64"n=40)	13	C-33	DSC-CA0008	Screw (15/64"n=28)	9	B-47
CUF-KZ0007	Upper Feed Lifting Adjusting Shaft	13	C-16	DSC-BA0010	Screw (11/64"n=40)	23	H-55	DSC-CA0008	Screw (15/64"n=28)	13	C-43
CUS-BN0001	Pulley Ring	9	B-34	DSC-BA0010	Screw (11/64"n=40)	25	H-59	DSC-CA0008	Screw (15/64"n=28)	15	D-30
CUS-DA0021	Link Cam	9	B-9	DSC-BA0011	Screw (11/64"n=28)	13	C-46	DSC-CA0008	Screw (15/64"n=28)	17	E-5
CUS-DA0032	Link Cam	23	H-12	DSC-BA0016	Screw (3/16"n=32)	17	E-17	DSC-CA0008	Screw (A) for H-15	23	H-16
CUS-KC0020	Upper Shaft	9	B-8	DSC-BA0017	Screw (9/64"n=40)	15	D-48	DSC-CA0008	Screw (B) for H-15	23	H-17
DBS-DA0224	Bushing (L) For E-1	17	E-4	DSC-BB0007	Screw (1/8"n=44)	15	D-3	DSC-CA0011	Screw (1/4"n=40)	9	B-14
DBS-DA0229	Bushing (U) For E-1	17	E-2	DSC-BB0008	Screw (9/64"n=40)	7	A-35	DSC-CA0017	Screw (15/64"n=28)	9	B-45
DBS-DA0235	Upper Shaft Middle Bushing	9	B-20	DSC-BB0008	Screw (9/64"n=40)	7	A-37	DSC-CA0019	Screw (1/4"n=40)	9	B-15
DBS-DA0237	Lower Shaft Front Bushing	9	B-41	DSC-BB0020	Screw (9/64"n=40)	7	A-48	DSC-CA0021	Screw (9/32"n=28)	9	B-24
DBS-DA0238	Lower Shaft Rear Bushing	9	B-46	DSC-BB0043	Screw (×3.378n=36)	11	B-63	DSC-CA0021	Screw (B) for H-12	23	H-14
DBS-DA0239	Bushing For D-28	15	D-29	DSC-BB0043	Screw for H-29	23	H-30	DSC-CA0042	Screw (M10×1.25)	9	B-48-11
DBS-DA0250	Bushing For B-72	11	B-70	DSC-BB0044	Screw (M6×1.0)	21	G-13	DSC-CB0004	Screw (1/4"n=40)	9	B-29
DBS-DA0251	Feed Regulator Bushing	9	B-23	DSC-BB0045	Feed Lifter Stud	23	H-48	DSC-CB0004	Screw (1/4"n=40)	9	B-48-9
DBS-DA0282	Bushing for B-72	23	H-34	DSC-BC0008	Screw (3/16"n=28)	17	E-26	DSC-CB0004	Screw (1/4"n=40)	11	B-50
DBS-DB0061	Upper Shaft Front Bushing	9	B-17	DSC-BC0009	Screw (11/64"n=40)	7	A-32	DSC-CB0004	Screw (1/4"n=40)	11	B-69
DBS-DB0062	Front Bushing For C-21	13	C-22	DSC-BF0001	Screw for H-38	23	H-41	DSC-CB0005	Screw (15/64"n=28)	15	D-32
DBS-DB0063	Rear Bushing For C-21	13	C-24	DSC-BF0008	Screw (15/64"n=28)	9	B-36	DSC-CB0005	Screw (15/64"n=28)	15	D-46
DBS-DB0066	Guide Bush For Lower Shaft	7	A-39	DSC-BF0008	Screw (15/64"n=28)	15	D-24	DSC-CB0007	Screw (M5)	15	D-13
DBS-DB0067	Bushing For C-16	13	C-17	DSC-BF0031	Screw (11/64"n=40)	13	C-35	DSC-CB0007	Screw for H-53	23	H-57
DBS-DB0072	Hook Shaft Bushing	11	B-53	DSC-BF0031	Screw (11/64"n=40)	17	E-7	DSC-CB0009	Screw (15/64"n=28)	17	E-3
DCL-AA0072	Collar For B-17	9	B-38	DSC-BF0031	Screw (11/64"n=40)	17	E-24	DSC-CB0018	Screw (1/4"n=40)	9	B-28
DCL-AA0079	Collar For B-40	9	B-44	DSC-BF0031	Screw (11/64"n=40)	17	E-15	DSC-CB0018	Screw (1/4"n=40)	9	B-48-8
DCL-AA0079	Collar For D-28	15	D-31	DSC-BF0035	Screw (5/16"n=28)	13	C-39	DSC-CB0018	Screw (1/4"n=40)	11	B-68
DCL-BB0024	Link Cam Stopper Ling	9	B-16	DSC-BF0036	Screw (11/64"n=40)	7	A-9	DSC-CB0024	Screw (1/8"n=44)	7	A-40
DGR-AD0010	Lower Shaft Gear	9	B-49	DSC-BF0038	Screw (9/64"n=40)	17	E-9	DSC-CB0029	Screw (9/64"n=40)	19	F-15
DGR-AD0011	Rotary Hook Gear (Ass'y)	11	B-61	DSC-BF0101	Screw (11/64"n=40)	23	H-38	DSC-FA0156	Stud Screw For C-52	13	C-55
DGR-AD0012	Lower Shaft Gear	23	H-21	DSC-BF0115	Screw (9/32"n=28)	9	B-11	DSC-FA0172	Screw(Upper) For A-2	7	A-3
DGR-AD0013	Rotary Hook Gear (Ass'y)	23	H-28	DSC-BF0144	Screw (9/64"n=40)	15	D-51	DSC-FA0178	Stud Screw For D-43	15	D-44
DPK-CB0011	Rubber Cap	7	A-22	DSC-BG0002	Screw (5/16"n=24)	9	B-37	DSC-FA0179	Stud Screw For D-23	15	D-25
DPL-AA0010	Pulley	9	B-33	DSC-BH0005	Screw (11/64"n=40)	21	G-19-5	DSC-FD0003	Screw For A-27	7	A-28
DPL-BA0005	Timing Belt Pulley (Up)	23	H-18	DSC-BJ0002	Screw (11/64"n=40)	7	A-50	DSC-FD0014	Stud Screw For E-29	17	E-30
DPL-BA0005	Timing Belt Pulley (Up)	9	B-26	DSC-BJ0002	Screw (11/64"n=40)	15	D-42	DSC-FD00150	Hinge Screw For E-32	17	E-36
DPL-BA0006	Safety Clutch Belt Pulley	9	B-48-1	DSC-BJ0003	Screw (9/64"n=40)	13	C-7	DSC-FF0019	Stud Screw For Connection Link	13	C-26
DPL-BA0006	Safety Clutch Belt Pulley	23	H-20	DSC-BJ0003	Screw (9/64"n=40)	17	E-38	DSC-FG0020	Roller Stud Screw	17	E-18
DPN-AA0038	Pin For D-49	15	D-52	DSC-BJ0003	Screw(9/64"n=40)	7	A-53	DSC-FG0021	Guide Shaft For Feed Rock Shaft	7	A-43
DPN-AA0088	Needle Bar Crank Shaft	9	B-12	DSC-BJ0004	Screw (11/64"n=40)	19	F-2	DSC-HA0007	Presser Adjusting Screw	17	E-33
DPN-AA0132	Hinge Pin for B-1	9	B-2	DSC-BJ0006	Screw (15/64"n=28)	13	C-53	DSC-HB0023	Hinge Pin For E-27	17	E-28
DPN-AA0148	Needle Bar Crank Shaft	23	H-15	DSC-BJ0013	Screw (1/64"n=40)	7	A-16	DSC-HB0026	Support Pin For G-19-1	21	G-19-4
DPN-AA0149	Feed Lifter Stud Presser	23	H-49	DSC-BJ0013	Screw (9/64"n=40)	7	A-14	DSN-AA0004	Nut (15/64"n=28)	7	A-44
DPN-AB0003	Pin For C-49	13	C-50	DSC-BJ0013	Screw (9/64"n=40)	7	A-18	DSN-AA0004	Nut (15/64"n=28)	13	C-56
DPN-AB0004	Pin For E-20	17	E-21	DSC-BJ0013	Screw (9/64"n=40)	7	A-56	DSN-AA0005	Nut (1/4"n=40)	13	C-20
DPN-AD0085	Hinge Pin For C-40	13	C-41	DSC-BJ0014	Screw (9/64"n=40)	7	A-55	DSN-AA0005	Nut (1/4"n=40)	13	C-27
DPN-AD0091	Shaft For Feed Lifter	15	D-33	DSC-BJ0014	Screw (9/64"n=40)	11	B-58	DSN-AA0007	Nut (15/64"n=28)	7	A-11
DPN-AH0001	Pin For D-14	15	D-16	DSC-BJ0014	Screw (9/64"n=40)	15	D-38	DSN-AA0022	Nut (9/32"n=28)	9	B-25
DPN-AH0001	Stopper Pin For B-72	11	B-73	DSC-BJ0014	Screw for H-46	23	H-50	DSN-CZ0009	Nut For Feed Regulator	15	D-9
DPN-BC0041	Button For B-67	11	B-72	DSC-BJ00160	Screw (3/32"n=56)	7	A-20	DSP-AA0064	Spring For Feed Regulator	15	D-11
DPN-BC0048	Button for B-67	23	H-35	DSC-BJ0020	Screw For C-10	13	C-11	DSP-AA0094	walking Foot Pressure Spring	13	C-38
DPN-BC0049	Shaft for Opener Guide Block	23	H-25	DSC-BJ0020	Screw For D-21	15	D-22	DSP-AA0095	Return Spring For E-10	17	E-11
DSC-AA0007	Screw (1/4"n=28)	13	C-15	DSC-BJ0022	Screw (3/32"n=56)	13	C-3	DSP-AA0096	Safety Clutch Ball Spring	9	B-48-5
DSC-AA0028	Screw (3/16"n=32)	11	B-66	DSC-BJ0035	Screw For D-33	15	D-35	DSP-AA0102	Return Spring For B-72	11	B-71
DSC-AA0028	Screw for H-22	23	H-33	DSC-BJ0037	Screw (9/32"n=28)	9	B-10	DSP-AB0044	Return Spring For D-1	15	D-14
DSC-AA0029	Set Screw For 161	17	E-35	DSC-BJ0037	Screw (A) for H-12	23	H-13	DSP-AC0052	Return Spring For G-18-4	21	G-18-9
DSC-AD0001	Bolt For A-27	7	A-29	DSC-BJ0043	Screw (9/64"n=4)	13	C-5	DSP-AC0060	Return Spring For E-29	17	E-31

