



PARTS BOOK

KM-640UBL-7 Series **KM-640BL-7 Series**

Long Arm Type, 1-Needle, Upper &
Lower Feed Lock Stitch M/C With
Thread Trimmer Driven by Servo
Motor & Large Hook Series
롱암형 1본침 상하송 본봉 자동사절
재봉기 시리즈 (수직 2배속)

PME-131216

Information

A. Parts Book 구성

Structure of Part Book

① **A** Arm, Bed & Machine Body Mechanism
팔, 침대 및 의장품 관계

②

③

④ ⑤ ⑥ ⑦ ⑧ ⑨

Ref. No.	Parts No.	Note	Name of Parts	중 명	Q'ty	Assembly No.
A-1	01-12841-03		Arm	팔	1	
A-2	01-10073-06		Bed	침대	1	
A-4	01-02120-00		Face Plate	면판	1	
A-5	01-02044-12M		Face Plate Gasket	면판 가스켓	1	
A-6	01-1174-4122		Screw(L)1/84*mm2	볼트	10	
A-7	01-11011-123D		Rubber Cap For Face Plate	면판 고무뚜껑	2	
A-9	01-00194-123D		Caution S/Screw	경고 스크류	1	
A-8	01-011973-00		Turn-up Lever Cover	날개기 피막	1	
A-10	01-02020-00		Screw(S)1/84*mm2	볼트(S)1/84*mm2	1	
A-11	01-01746-00		Bed Cover(L)	침대 커버(좌)	1	
A-12	01-01441-123M		Bed Cover Gasket(L)	침대 커버 가스켓(좌)	1	
A-13	01-02643-123D		Screw(L)1/84*mm2	볼트(S)1/84*mm2	14	
A-13-1	45-0244-1000		Washer	와셔	2	
A-14	01-01750-00		Bed Cover(S)	침대 커버(우)	1	
A-15	01-01744-123M		Bed Cover Gasket(S)	침대 커버 가스켓(우)	1	
A-16	440211-100M		Tank Rubber Cap	고압 탱크 고무뚜껑	1	
A-17	01-02074-123D		Thread Guide with Three Poles	세극용 실선지(3극)	15Set	
A-19	01-02031-123D		Thread Guide(L)	실선 실선지(좌)	1	
A-20	01-02032-123D		Thread Guide(R)	실선 실선지(우)	3	
A-21	01-01000-123D		Thread Guide(S)	실선 실선지	1	
A-22	01-01643-00		Arm Thread Guide Assy	팔 실선지 실선지(조)	1	
A-23	11-01750-750D		Nut	너트	1	
A-24	01-02031-123M		Thread Guide(L)	실선지(좌)	1	
A-25	0102070-100M		Siscon Tank Assy	실리콘 탱크 용액(조)	15Set	
A-26	0102065-100M		Siscon Tank	실리콘 탱크 용액	1	
A-27	0102066-100M		Siscon Oil Window	실리콘 유창	1	
A-28	0102401-100M		Siscon Part	실리콘 부품 용액	1	
A-29	01-01363-00		Part for Siscon Oil Supply	실리콘 공급 탱크 부품	1	
A-30	01-01644-123D		Screw(L)1/84*mm2	볼트(S)	1	
A-31	04-02411-123D		Arm Upper Part Rubber Cap	팔 상부 고무 뚜껑	2	
A-33	04-02101-123M		Needle Bar Rubber Cap	바늘봉 고무 뚜껑	4	
A-34	01-04210-142L		Rubber Cap(L)	고무뚜껑(좌)	4	
A-35	44-02111-7400		Rubber Cap(S)	고무뚜껑(우)	7	
A-36	01-01750-123M		Bed Rubber	침대 고무	1	
A-37	01-019817-00		Welder (Sticker)(M)	인쇄 스티커-중형용	1	
A-38	01-019818-00		M Welder (Sticker)(L)	인쇄 스티커-대형용	1	
A-39	01-019819-00		L Welder (Sticker)(L)	인쇄 스티커-대형용	1	
A-40	01-019820-00		K Welder (Sticker)(L)	인쇄 스티커-대형용	1	
A-41	01-01110-123D		Tap Cover	타프 커버	2	
A-42	01-0514-123M		Tap Cover	타프 커버	1	
A-43	41-0114-123M		Siscon Winder Assy	실선지(조)	15Set	
A-44	41-02011-123M		Siscon Winder (Base Assy)	실선지 권취기(조)	1	
A-45	41-0205A-123M		Siscon Winder (Shaft)	실선지 권취기	1	
A-46	01-02051-00	S. Drive	Sticker(S)	태그 인쇄 스티커	1	
A-47	01-01020-750D		Screw(S)	볼트(S)	1	
A-48	41-02061-123M		Siscon Winder	실선지 권취기	1	
A-49	01-0104-550T		Screw(L)1/84*mm2	볼트(S)	2	
A-50	41-02081-123M		Siscon Winder Action Ring	실선지 권취기	1	
A-51	41-02091-123M		Siscon Winder (Shaft) Rubber Ring	실선지 권취기 고무링	1	
A-52	41-02101-123M		Siscon Winder (Shaft)	실선지 권취기	1	
A-53	41-02111-123M		Siscon Winder Adjusting Plate	실선지 조정판	1	
A-54	01-01130-123D		Screw(L)1/84*mm2	볼트(S)1/84*mm2	1	
A-55	01-01194-123D		Washer	와셔	1	
A-56	41-02131-123M		Siscon Winder (Shaft)	실선지 권취기	1	
A-57	41-02141-123M		Siscon Winder Adjusting Term	실선지 조정판	1	
A-58	0102150-04113		Screw(M)4x20.7	볼트(S)	1	

Note: P= Heavy Material(중형용), M=Medium Material(중형용), M= Pneumatic Heavy Material(공압식 중형용)
L= Light Material(대형용), K=Roll Material(롤용), EL=Large Shuttle Model(대 시틀 용)

①:관계 별 고유 코드

Unique code by mechanism

②:관계 별 고유 명칭

Unique name by mechanism

③:관계도

Explode view

④Ref.No.:파트별 고유 식별 번호

Unique identification number by part

⑤Parts No.:고유 제품 코드

Unique Product code

Ex)

구분 Category	Code	비고 remarks
구 부품 Old part	01-030C-1230	
신 부품 New Part	AS-000000-00	조(組) 파트 Set parts
	GP-000000-00	기구적 파트 Instrumental parts
	EP-000000-00	전기적 파트 Electrical parts

⑥Note:공지사항 표기 및 메모

Refers to notice and memo

⑦품

명:파트의 고유 품명

Name of Part:Unique name of parts

⑧Q'ty :파트의 수량

The number of parts

⑨Assembly no.:조(組) 파트의 식별 번호

Unique identification number by set part

Warning

1. 조에 속한 파트는 개별 조립 시 제품의 파손 또는 재봉 불량 발생될 수 있어 해당 파트에 대한 주문 시에는 조 품목으로만 구입이 가능합니다.
2. 본 책자는 Parts Book으로 제작되었으므로 매뉴얼로 사용 불가합니다.
3. 사전 예고 없이 사양이 변경 될 수도 있습니다.

1. The parts classified as ass'y items may cause damage to the machine or bad sewing when they are separately assembled. Hence, when they are ordered, they can be purchased as ass'y items only.
2. This is a parts book. It cannot be used as a manual.
3. Parts are Subject to change in Design Without Prior Notice.

Note

- 썬스타 제품의 부품은 아래 인터넷주소로 접속하시어 신청할 수 있습니다.
<http://www.sunstarcs.com>
- 가입된 회원께서는 썬스타 포탈 사이트에 로그인후 필요한 부품을 신청할 수 있습니다.
- 부품관리-발주관리-발주등록 항목에서 부품번호와 신청수량을 입력하여 등록하시면 발주가 됩니다.
- 부품번호를 모르시는 경우 파츠북 조회를 클릭하시고 사용하는 기종을 검색하여 선택하시면 해당 기종의 파츠북을 조회할 수 있습니다.
- 파츠북은 관계별로 구분되어 있으며 관계를 알고 있다면 부품 찾기가 용이합니다.
- You can make an order for the parts of Sunstar machine to connect internet address.
<http://www.sunstarcs.com>
- You can request for parts you want after login if you are a registered member.
- In parts Management - Order Management - Order Registration entry, you can place an order by entering the part number and quantity.
- If you don't know the parts number, click the parts book menu bar.
In a download list, you can read parts book by searching model you use.
- This parts book is classified by the mechanism, therefore you can find part easily.

MODEL

FOR HEAVY MATERIAL

- **KM-640UBL-7 / KM-640BL-7**

LONG ARM TYPE, 1-NEEDLE, UPPER & LOWER FEED LOCK STITCH M/C WITH THREAD TRIMMER DRIVEN BY SERVO MOTOR & LARGE HOOK

롱암형, 1본침 상하송 본봉 자동사절 재봉기 (수직 2배속)

- **KM-640UBL / KM-640BL**

LONG ARM TYPE, 1-NEEDLE, UPPER & LOWER FEED LOCK STITCH M/C WITH LARGE HOOK

롱암형, 1본침 상하송 본봉 재봉기 (수직 2배속)

CONTENTS

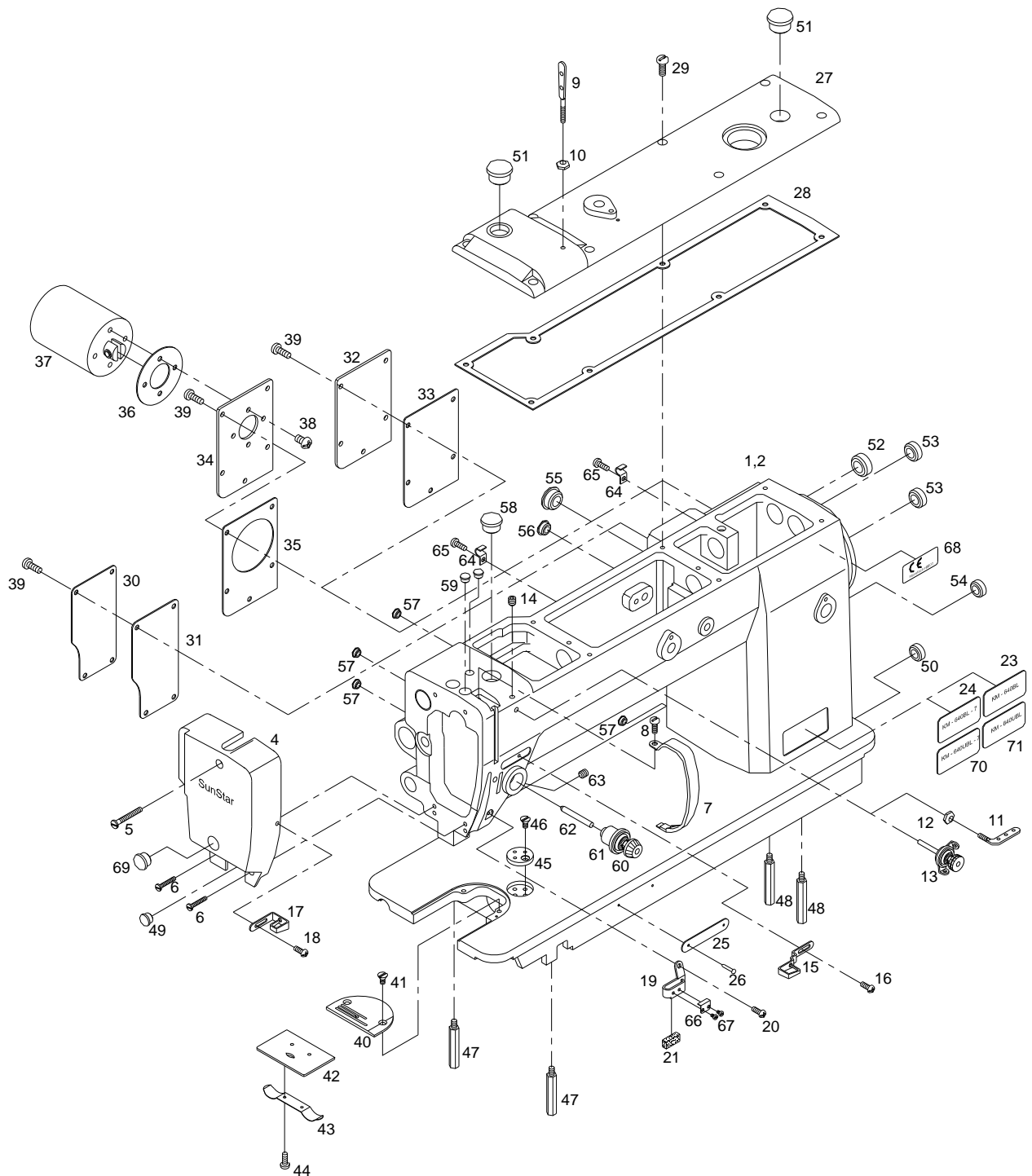
목 차

A	Machine Body & Thread Tension Adjusting Mechanism 외장 및 실장력 조절 관계	6
B	Upper Shaft & Needle Bar Mechanism 상축 및 바늘대 관계	10
C	Upright Shaft & Lower shaft Mechanism 입축 및 하축 관계	12
D	Lower Feed Mechanism 하 피이드 관계	14
E	Thread Trimmer Mechanism 사절 관계	18
F	Upper Feed Mechanism 상 피이드 관계	22
G	Presser Foot & Tension Release Mechanism 노루발 및 실넛추기 관계	26
H	Reverse Button Mechanism 역진 버튼 관계	28
I	Lubrication Mechanism 급유 관계	30
J	Accessories Mechanism 액세서리 관계	32
	Index 인덱스	34

A

Machine Body & Thread Tension Adjusting Mechanism

외장 및 실장력 조절 관계





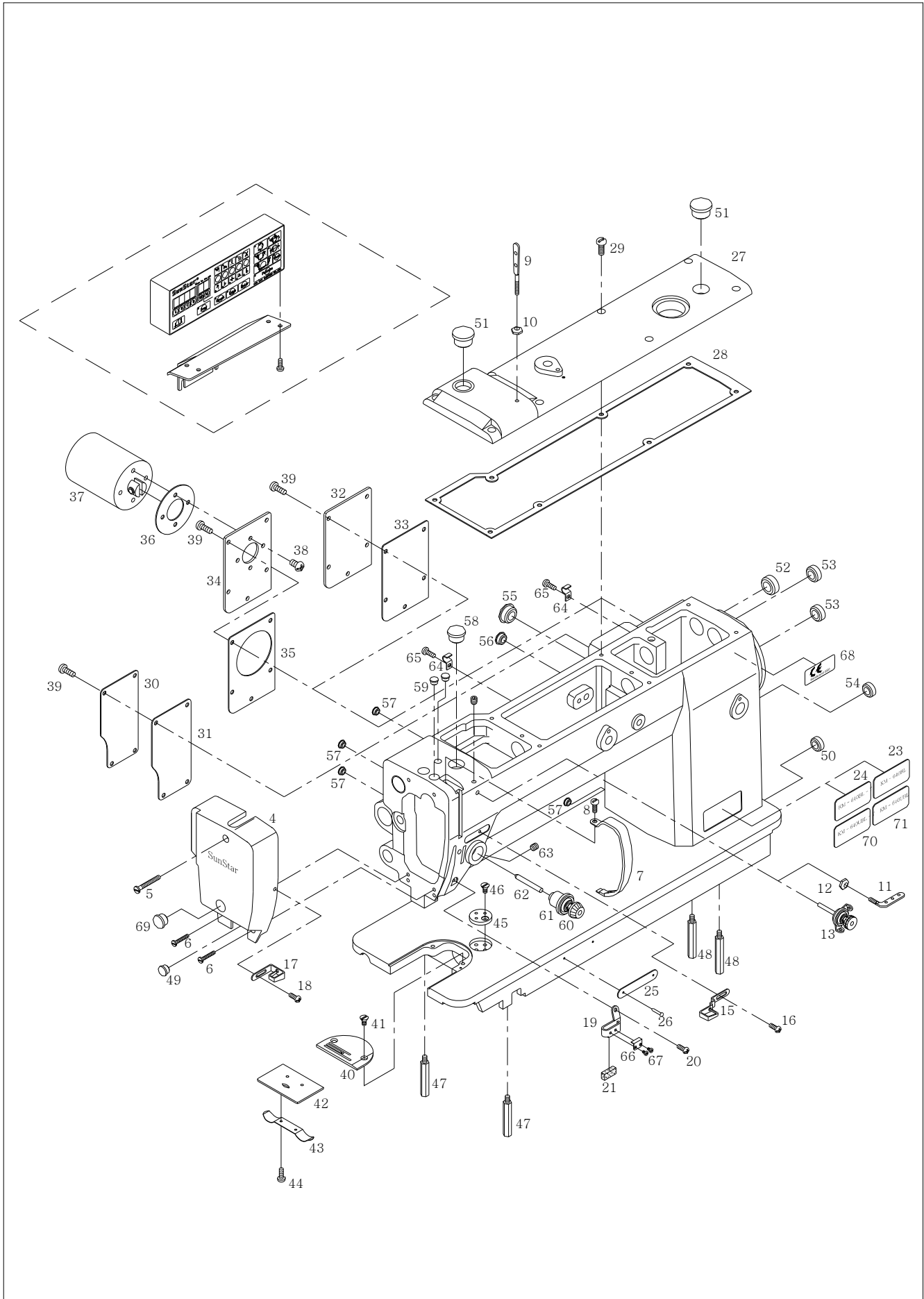
Ref. No.	Parts No.	Note	Name of Parts	품 명	Q'ty	Applied
A-1	01-001A-640L	BL	Arm, Bed	암 베드	1	
A-2	AS-007377-01	BL-7	Arm, Bed	암 베드	1	Feb.25.11
A-4	CMB-BJ005300		Face Plate	면판	1	
A-5	DSC-BA003100		Screw For Face Plate(Upper)	면판 칩나사(상)	1	
A-6	DSC-BF001200		Screw(11/64"n=40)	가마잡이 나사	2	
A-7	CMB-LA013600		Thread Take Up Cover	실채기 커버	1	
A-8	DSC-BJ000200		Screw(11/64"n=40)	홈카바 힌지 고정나사	1	
A-9	CMB-HK002000		Upper Thread Guide Pin Ass'y	윗실 걸이(조)	1Set	
A-10	DSN-AA000100		Nut For A-9	윗실 걸이 칩 너트	1	
A-11	CMB-HK000300	BL	Thread Guide With Three Holes	세구멍 실걸이	1	
A-12	DSN-AA000100	BL	Nut For A-11	세구멍 실걸이 칩 너트	1	
A-13	40-001A-257A	BL-7	Sub Upper Thread Tension Ass'y Control	보조 실조절 장치(조)	1Set	
A-14	DSC-CA001600	BL-7	Screw(11/64"n=40)	실늦추기 고정나사	1	
A-15	CMB-HK005900		Arm Thread Guide	암 실안내	1	
A-16	DSC-BA000100		Screw(9/64"n=40)	암 실안내 칩나사	1	
A-17	CMB-HK006100		Face Plate Thread Guide	면판 실안내	1	
A-18	DSC-BA000100		Screw(9/64"n=40)	오일펌프 카바나사	1	
A-19	CMB-HK006200		Arm Thread Guide Plate(L)	암 실안내(하)	1	
A-20	DSC-BA000100		Screw(9/64"n=40)	오일펌프 카바나사	1	
A-21	CLB-JL007300		Upper Thread Oil Felt	윗실 급유 헬트	1	
A-23	CMB-LD001800		Model Mark(KM-640BL)	모델 마크(KM-640BL)	1	
A-24	GP-009181-00	BL-7	Model Mark(KM-640BL-7)	모델 마크(KM-640BL-7)	1	
A-25	01-035P-1370		Machine Number Plate	기번판	1	
A-26	01-035P-7400		Pin For A-25	기번판 고정핀	2	
A-27	CMB-LA013400		Top Cover	윗뚜껑	1	
A-28	CMB-FC004600		Gasket For Top Cover	윗뚜껑 가스켓	1	
A-29	DSC-BF003100		Screw(11/64"n=40)	가마잡이 나사	8	
A-30	CMB-LA013500		Back Cover(A)	뒷뚜껑(A)	1	
A-31	CMB-FC005200		Gasket For Back Cover(A)	뒷뚜껑(A) 가스켓	1	
A-32	01-028A-640L	BL	Back Cover(B)	뒷뚜껑(B)	1	
A-33	01-129C-640L	BL	Gasket For Back Cover(B)	뒷뚜껑(B) 가스켓	1	
A-34	CFA-BB001200	BL-7	B/T Solenoid Bracket	역진 솔레노이드 브라켓	1	
A-35	CFA-FC000200	BL-7	Gasket for B/T Solenoid Bracket	역진 솔레노이드 브라켓 가스켓	1	
A-36	CFA-FC000100	BL-7	Gasket for B/T Solenoid	역진 솔레노이드 가스켓	1	
A-37	06-0001-6400	BL-7	B/T Solenoid Ass'y	역진 솔레노이드 (조)	1Set	
A-38	DSC-BF003600	BL-7	Screw(11/64"n=40)	역진 솔레노이드 칩나사	4	
A-39	DSC-BF001200		Screw(11/64"n=40)	가마잡이 나사	13	
A-40	CGA-GA001500		Needle Plate	침판	1	
A-41	DSC-BC000100		Screw(11/64"n=40)	침판 칩나사	2	
A-42	CMB-BJ005100		Slide Plate	미끄럼판	1	
A-43	DSP-AD001000		Slide Plate Spring	미끄럼판 스프링	1	
A-44	DSC-BD000300		Screw For A-43	미끄럼판 스프링 칩나사	2	
A-45	CMB-BJ002400		Gauge Plate	게이지 부착판	1	
A-46	DSC-BC000100		Screw(11/64"n=40)	게이지 부착판 칩나사	1	
A-47	CMB-BA000500		Bed Base(Front)	베드 받침(전)	2	
A-48	CMB-BA000600		Bed Base(Rear)	베드 받침(후)	2	
A-49	DPK-CB000200		Face Plate Rubber Cap	면판 고무마개	1	
A-50	DPK-CA000600		Bed Rubber Cap	베드 고무마개	1	
A-51	DPK-CB000100		Top Cover Rubber Cap	윗뚜껑 고무마개	2	
A-52	DPK-CA000301		Feed Regulator Shaft Rubber Cap	절환기 고무마개	1	Jul.06.11
A-53	DPK-CA000401		Climb Device Adjusting Shaft Rubber Cap	노루발 상하운동 조절축 고무마개	2	Jul.06.11
A-54	DPK-CA000501		Feed Adjusting Shaft Rubber Cap	피이드 조절축 고무마개	1	Jul.06.11
A-55	DPK-CB002600		Arm Back Part Rubber Cap(Large)	암 후부 고무마개(大)	1	
A-56	DPK-CB000200		Arm Back Part Rubber Cap(Middle)	암 후부 고무마개(中)	1	
A-57	DPK-CB000801		Arm Back Part Rubber Cap(Small)	암 후부 고무마개(小)	4	Aug.22.11
A-58	DPK-CB000100		Arm Upper Part Rubber Cap(Large)	암 상부 고무마개(大)	1	
A-59	DPK-CB000801		Arm Upper Part Rubber Cap(Small)	암 상부 고무마개(小)	2	Aug.22.11

NOTE: BL: KM-640BL
 BL-7: KM-640BL-7
 □=Common Part

A

Machine Body & Thread Tension Adjusting Mechanism

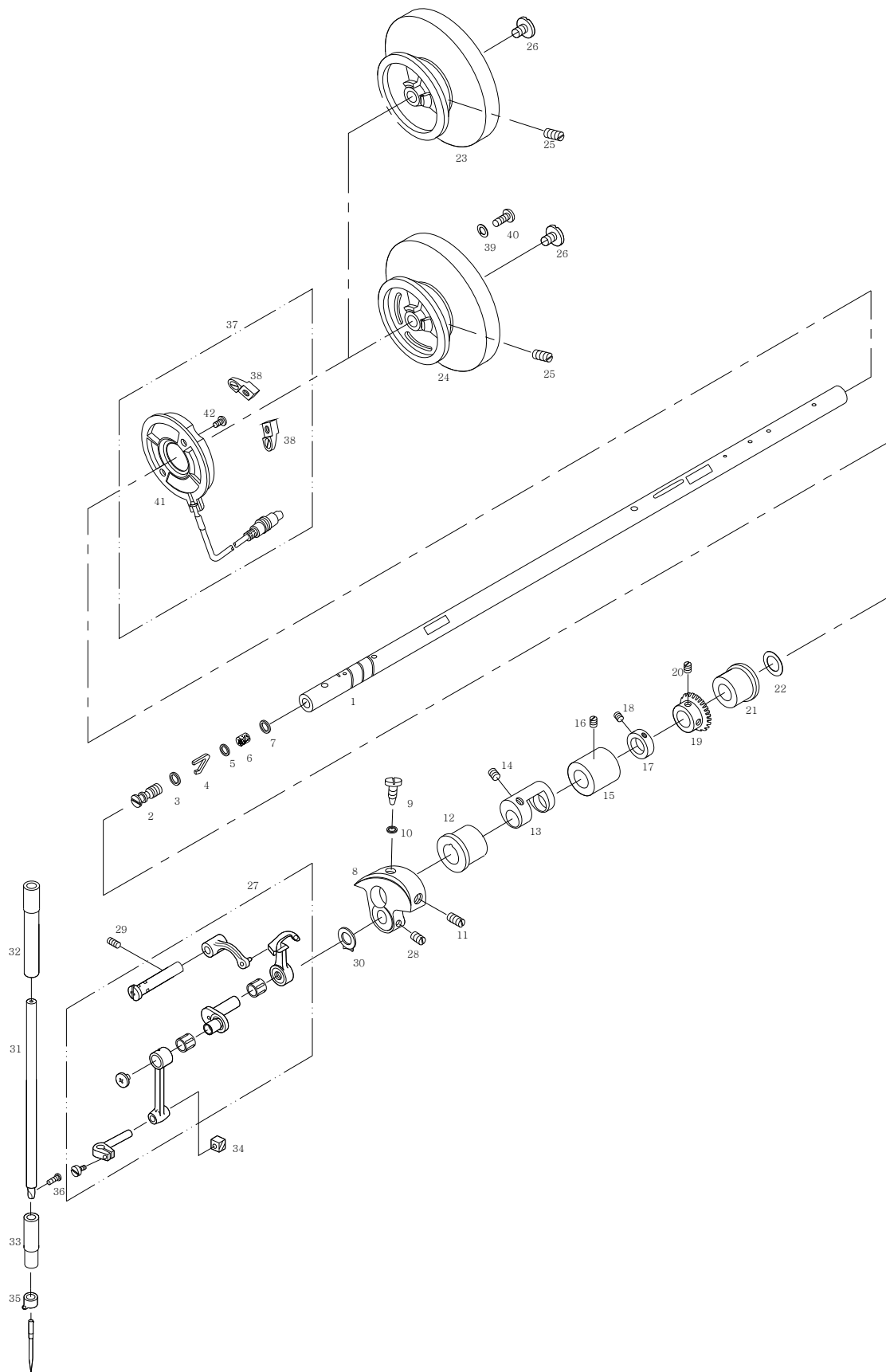
외장 및 실장력 조절 관계



B

Upper Shaft & Needle Bar Mechanism

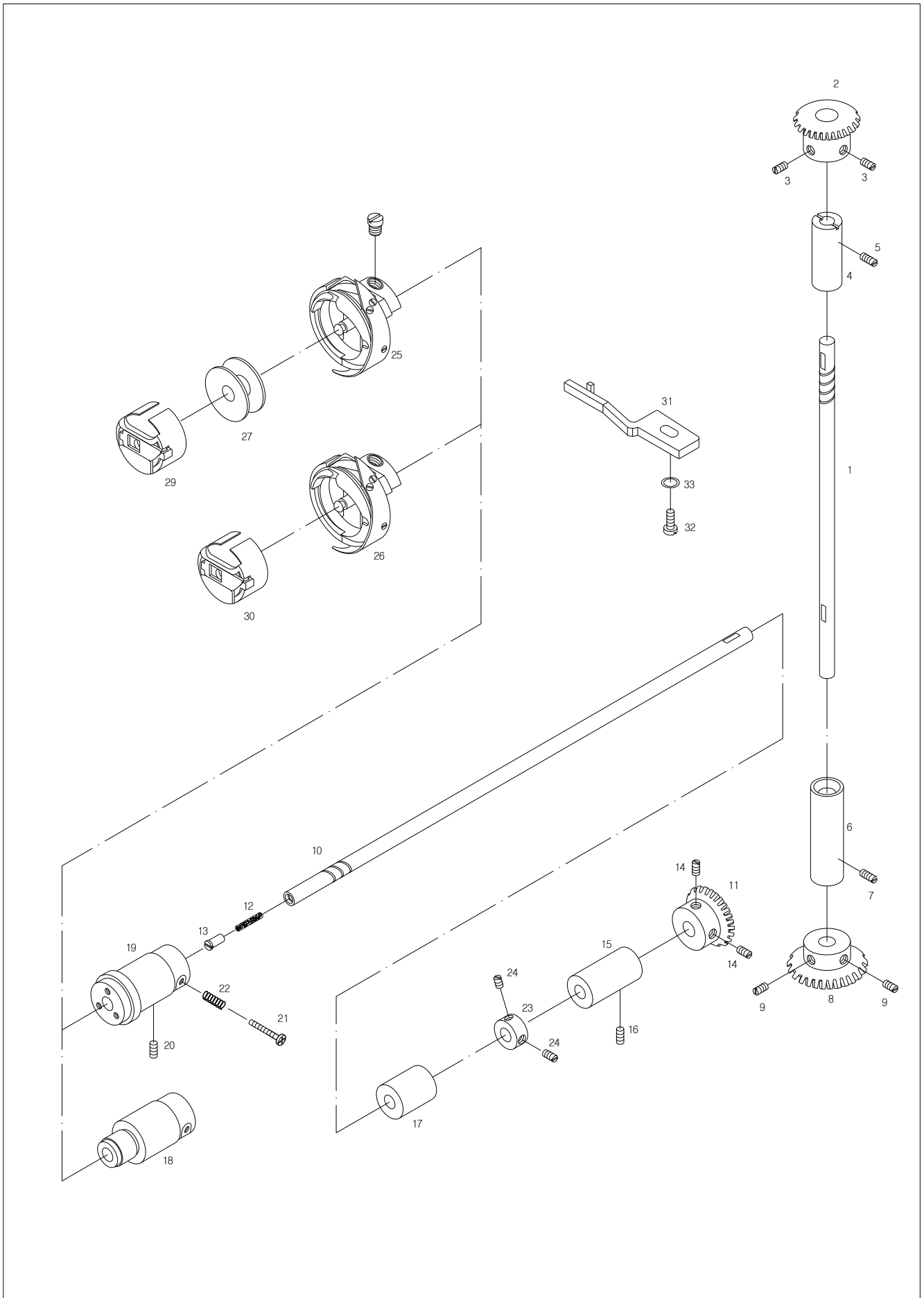
상축 및 바늘대 관계



C

Upright Shaft & Lower Shaft Mechanism

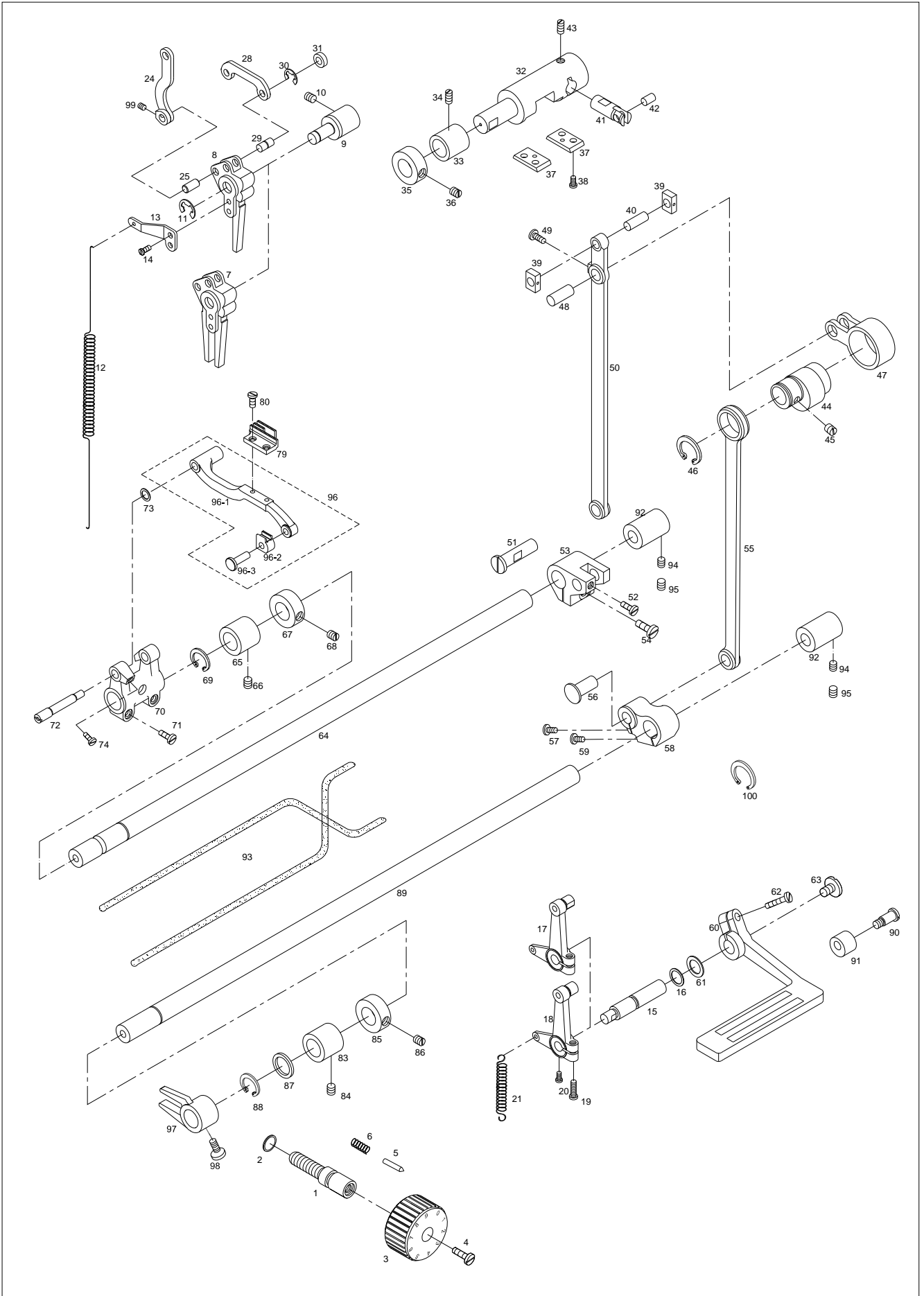
세운 축 및 하축 관계



D

Lower Feed Mechanism

하 피이드 관계



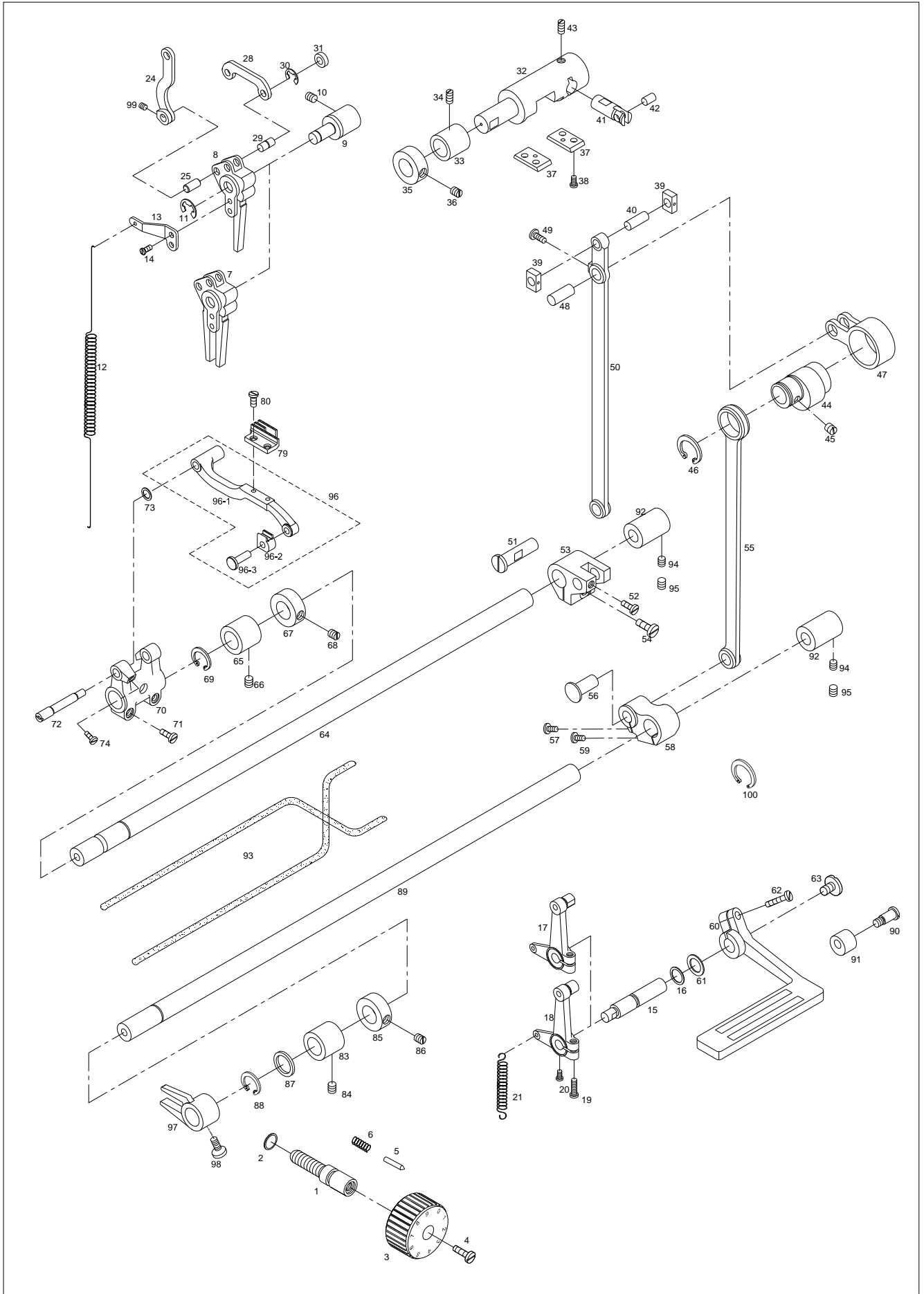
Ref. No.	Parts No.	Note	Name of Parts	품 명	Q'ty	Assembly
D-1	CFA-KJ001000		Feed Regulator Dial Shaft	피이드 조절 다이얼 축	1	
D-2	PPK-BA001600		O-Ring For D-1	피이드 조절 다이얼 축 O-링	1	
D-3	CFA-CQ000900		Feed Regulator Control Plate	다이얼 문자판	1	
D-4	DSC-BF001900		Screw(3/16"n=28)	다이얼 판 고정나사	1	
D-5	DPN-AA008600		Pin For D-3	다이얼 문자판 핀	1	
D-6	DSP-AA002800		Spring For D-5	다이얼 문자판 핀 스프링	1	
D-7	06-107A-640L	BL	Feed Regulator	피이드 조절기	1	
D-8	CFA-DF000700	BL-7	Feed Regulator	피이드 조절기	1	
D-9	CFA-KF000600		Feed Adjusting Shaft	피이드 조절축	1	
D-10	DSC-CB000500		Screw(15/64"n=28)	피이드 조절축 짐나사	1	
D-11	PSR-AC000900		E-Ring For D-8	피이드 조절축 E형 멈춤링	1	
D-12	DSP-AB004200		Spring For D-7, D-8	피이드 조절기 스프링	1	
D-13	CFA-BF000200		Holder For D-12	피이드 조절기 스프링 걸이	1	
D-14	DSC-BF003600		Screw(11/64"n=40)	실체기 카바나사	2	
D-15	CFA-KF000700		Reverse Feed Control Lever Shaft	역진 레버 축	1	
D-16	PPK-BA000700		O-Ring For D-15	역진 레버 축 O-링	1	
D-17	06-118A-640L	BL	Reverse Feed Lever Crank Ass'y	역진 레버 크랭크(조)	1조	
D-18	AFA-PS000400	BL-7	Reverse Feed Lever Crank Ass'y	역진 레버 크랭크(조)	1조	
D-19	DSC-BA000400		Screw(3/16"n=28)	수평 밀대 크랭크 짐나사	1	
D-20	DSC-BF003100		Screw(11/64"n=40)	역진 레버 크랭크 고정나사	1	
D-21	DSP-AB003500		Return Spring For D-17, D-18	역진 레버 크랭크 리턴 스프링	1	
D-24	CLF-CC001600		Connecting Rod For Feed Regulator Shaft	절환기 연결로드	1	
D-25	DPN-AA011600		Pin For D-24	절환기 연결로드 핀	1	
D-28	CFA-CB001300	BL-7	B/T Solenoid Crank	역진 솔레노이드 크랭크	1	
D-29	DPN-AA011600	BL-7	Pin For D-28	역진 솔레노이드 크랭크 연결핀	1	
D-30	PSR-AC000300	BL-7	E-Ring For D-29	역진 솔레노이드 크랭크 연결핀 E-형 멈춤링	1	
D-31	DCL-BB002000	BL-7	B/T Solenoid Crank Spacer	역진 솔레노이드 크랭크 스페이서	1	
D-32	CLF-KK000400		Feed Regulator Shaft	절환기	1	
D-33	DBS-DA019900		Feed Regulator Shaft Bushing	절환기 축 붓싱	1	
D-34	DSC-CA000100		Screw(15/64"n=28)	절환기 축 붓싱 짐나사	1	
D-35	DCL-AA000100		Stopper Collar For D-32	절환기 스톱퍼 카라	1	
D-36	DSC-CA000500		Screw(1/4"n=40)	절환기 스톱퍼 카라 고정나사	2	
D-37	CLF-BJ001400		Slide Block Guide Plate	슬라이드 블럭 안내판	2	
D-38	DSC-BF003600		Screw(11/64"n=40)	슬라이드 블럭 안내판 짐나사	4	
D-39	CLF-BK000200		Slide Block	슬라이드 블럭	2	
D-40	DPN-AA011500		Slide Block Shaft	슬라이드 블럭 축	1	
D-41	DPN-AA013600		Reverse Shaft For D-32	절환기 역진 축	1	
D-42	DPN-AA012600		Connecting Pin For D-41	절환기 역진 축 연결핀	1	
D-43	DSC-CA000800		Screw(15/64"n=28)	절환기 역진 축 짐나사	1	
D-44	CLF-DC001300		Feed Cam	피이드 캠	1	
D-45	DSC-CA000500		Screw(1/4"n=40)	피이드 캠 고정나사	2	
D-46	DSR-AA000100		C-Ring For D-44	피이드 캠 C형 멈춤링	1	
D-47	CLF-CC001000		Connecting Rod For D-44	피이드 캠 연결로드	1	
D-48	DPN-AA012500		Pin For D-47	피이드 캠 연결로드 핀	1	
D-49	DSC-BA001000		Screw(11/64"n=40)	인봉카라짐나사	1	
D-50	CLF-CC001500		Feed Connecting Rod	피이드 연결로드	1	
D-51	DPN-AD008300		Pin For D-50	피이드 연결로드 핀	1	
D-52	DSC-BF000400		Screw(15/64"n=28)	툽니 받침 축 고정나사	1	
D-53	CLF-CB002000		Level Feed Shaft Crank(Rear)	수평밀대 크랭크(후)	1	
D-54	DSC-BF002900		Screw(15/64"n=28)	상피이드 노루발 압력 조절나사	1	
D-55	CLF-CC001100		Crank Rod	크랭크 로드	1	
D-56	DPN-AD008000		Connecting Pin for D-55	크랭크 로드 연결핀	1	
D-57	DSC-AA003000		Screw(3/16"n=32)	스토퍼 짐나사	1	
D-58	CLF-CB002600		Feed Lifting Shaft Crank(Rear)	들대 크랭크(후)	1	
D-59	DSC-AA003000		Screw(3/16"n=32)	스토퍼 짐나사	1	
D-60	CFA-CM001300		Reverse Feed Lever	역진 레버	1	
D-61	DWS-CB000200		Washer for Reverse Feed Lever Shaft	역진 레버 축 파형 와셔	1	

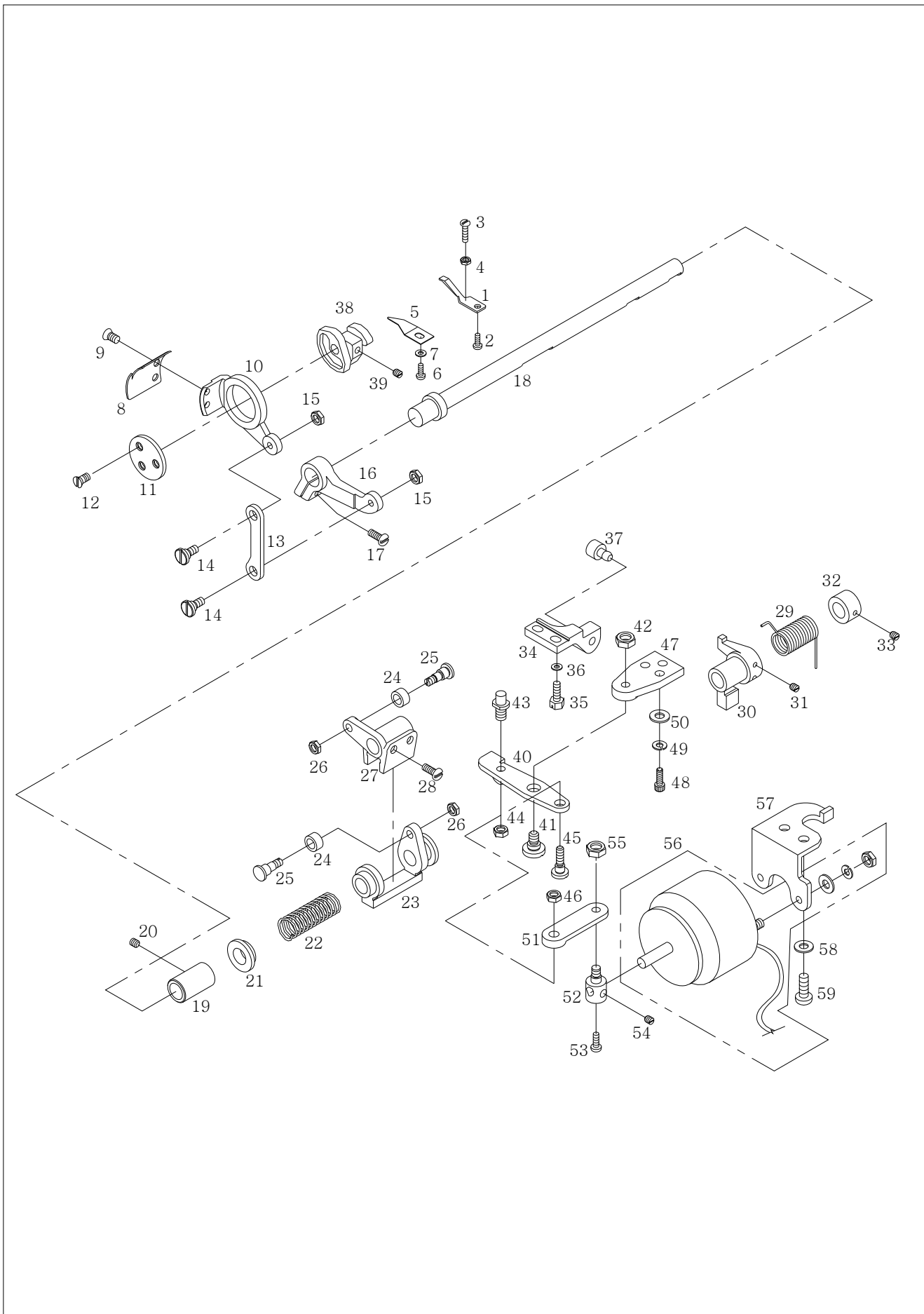
NOTE: BL: KM-640BL
 BL-7: KM-640BL-7
 □=Common Part

D

Lower Feed Mechanism

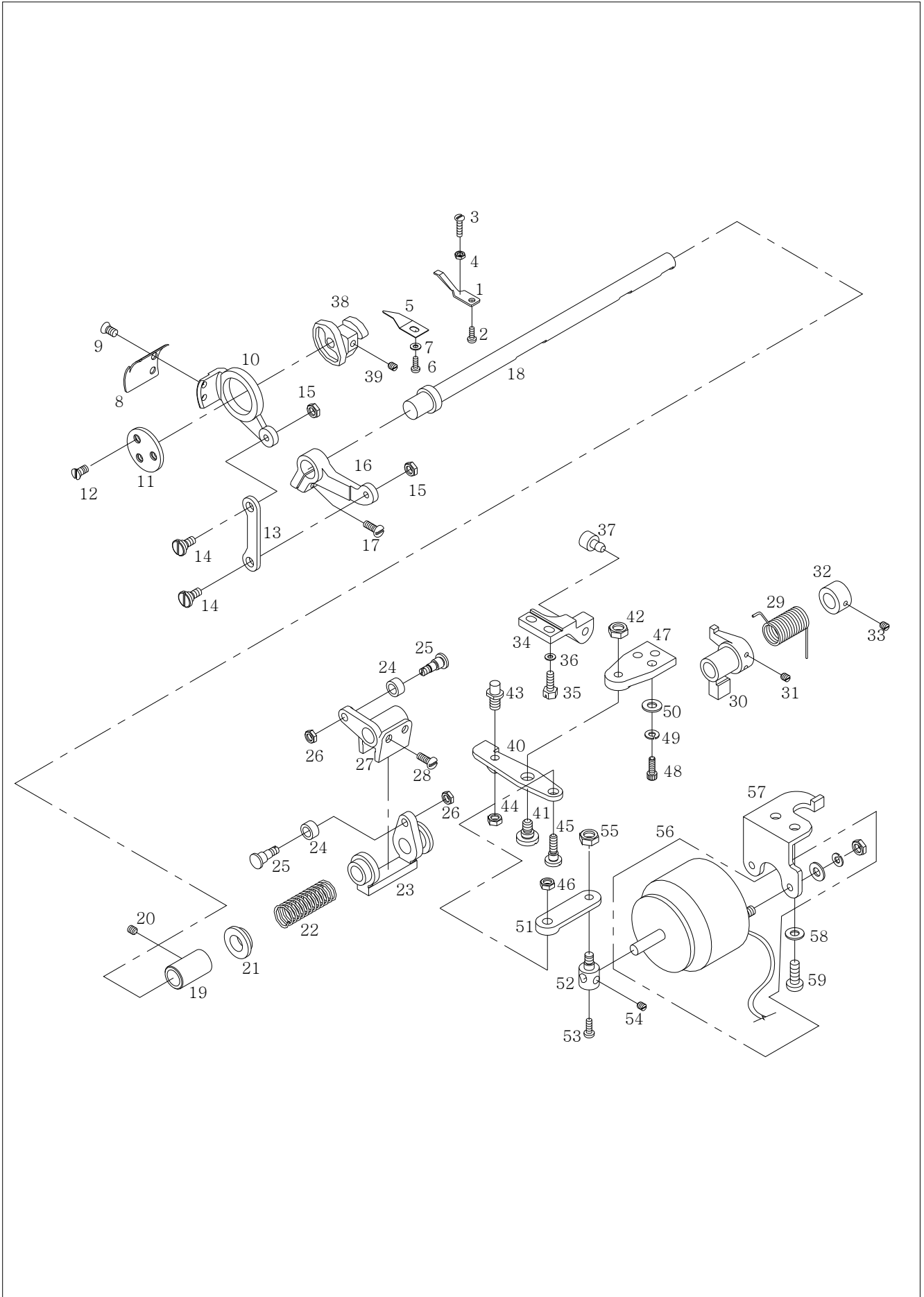
하 피이드 관계





Ref. No.	Parts No.	Note	Name of Parts	품 명	Q'ty	Assembly
E-1	CTT-NB001401	BL-7	Fixed Mes	고정메스	1	
E-2	DSC-BB000800	BL-7	Screw(9/64"n=40)	바늘판 받침 짐나사B	1	
E-3	DSC-BB002000	BL-7	Screw(1/8"n=40)	고정메스 장력 조절나사	1	
E-4	DSN-AA001700	BL-7	Nut(1/8"n=40)	고정메스 장력 조절나사 너트	1	
E-5	CTT-BJ004200	BL-7	Thread Retaining Plate	실 가리개	1	
E-6	DSC-BF003600	BL-7	Screw(11/64"n=40)	실채기 카바 나사	1	
E-7	DWS-AA003800	BL-7	Washer for E-5	실 가리개 고정와셔	1	
E-8	CTT-NA001300	BL-7	Rotary Mes	동메스	1	
E-9	DSC-BB001400	BL-7	Screw(11/64"n=40)	회전메스 고정나사	2	
E-10	CTT-BF001400	BL-7	Thread Trimming Holder	사절 홀더	1	
E-11	CTT-LB000200	BL-7	Thread Trimming Holder Cover	사절 홀더 커버	1	
E-12	DSC-BB002000	BL-7	Screw(9/64"n=40)	사절 홀더 커버 고정나사	3	
E-13	CTT-CA001200	BL-7	Thread Trimming Lever Connecting Link	사절 레버 연결 링크	1	
E-14	DSC-FA016400	BL-7	Stud Screw for E-13	사절 레버 연결 링크 단나사	2	
E-15	DSN-AA000600	BL-7	Nut for E-14	오프너 너트	2	
E-16	CTT-CM002300	BL-7	Thread Trimming Lever	사절 레버	1	
E-17	DSC-BF001000	BL-7	Screw(11/64"n=40)	사절 레버 짐나사	1	
E-18	CTT-KF000600	BL-7	Thread Trimming Shaft	사절 축	1	
E-19	DBS-DA020000	BL-7	Thread Trimming Shaft Bushing	사절 축 붓싱	1	
E-20	DSC-CA000300	BL-7	Screw(3/16"n=28)	가마축 붓싱 짐나사	1	
E-21	DBS-DB005900	BL-7	Guide Bush for Return Spring	리턴 스프링 가이드 붓싱	1	
E-22	DSP-AA008500	BL-7	Slide Arm Return Spring	슬라이드 암 리턴 스프링	1	
E-23	CTT-CM002500	BL-7	Slide Arm	슬라이드 암	1	
E-24	CTT-CL000300	BL-7	Roller	사절 캠 로울러	2	
E-25	DSC-GA000400	BL-7	Stud Screw for E-24	사절 캠 로울러 단나사	2	
E-26	DSN-AA000600	BL-7	Nut(3/16"n=32)	오프너 너트	2	
E-27	CTT-BF001300	BL-7	Cam Follower Crank	사절 캠 종동 크랭크	1	
E-28	DSC-BJ000500	BL-7	Screw(15/64"n=28)	피드 조절 크랭크 짐나사	2	
E-29	DSP-AC005300	BL-7	Return Spring	사절 축 리턴 스프링	1	
E-30	CTT-CM002400	BL-7	Stopper Lever	스토퍼 레버	1	
E-31	DSC-CB000500	BL-7	Screw(15/64"n=28)	캠 접촉 안내 고정나사	2	
E-32	DCL-AA002800	BL-7	Collar for E-18	피드 조절기 축 카라	1	
E-33	DSC-CB002300	BL-7	Screw(1/4"n=40)	사절 축 카라 짐나사	2	
E-34	CTT-BB002900	BL-7	Stopper	스토퍼	1	
E-35	DSC-AA003000	BL-7	Screw(3/16"n=32)	스토퍼 짐나사	2	
E-36	DWS-AA000600	BL-7	Washer	스토퍼 짐나사 와셔	2	
E-37	CTT-FD000300	BL-7	Stopper Lever Cushion Rubber	스토퍼 레버 쿠션 고무	1	
E-38	CTT-DF000400	BL-7	Mes Cam	사절 캠	1	
E-39	DSC-CB000400	BL-7	Screw(1/4"n=40)	사절 캠 짐나사	2	
E-40	CTT-CM002200	BL-7	Clutch Lever	클러치 레버	1	
E-41	DSC-FA016300	BL-7	Stud Screw for E-38	클러치 레버 단나사	1	
E-42	DSN-AA000400	BL-7	Nut(15/64"n=28)	수평운동 롯데 단나사 너트	1	
E-43	DSC-FG001400	BL-7	Stud Screw for E-38	클러치 레버 작동 핀나사	1	
E-44	DSN-AA000400	BL-7	Nut(15/64"n=28)	수평운동 롯데 단나사 너트	1	
E-45	DSC-FA016200	BL-7	Stud Screw for E-47	솔레노이드 연결 링크 단나사	1	
E-46	DSN-AA000600	BL-7	Nut(3/16"n=32)	오프너 너트	1	
E-47	CTT-BJ004400	BL-7	Base Plate	베이스 플레이트	1	
E-48	DSC-AA003000	BL-7	Screw(M5×P0.8)	베이스 플레이트 고정나사	3	
E-49	DWS-CA000100	BL-7	Spring Washer for E-48	스프링 와셔(Ø5)	3	
E-50	DWS-AA000600	BL-7	Washer for E-48	와셔(Ø5)	3	
E-51	CTT-CA001400	BL-7	Solenoid Connecting Link	솔레노이드 연결 링크	1	
E-52	DPN-BC003600	BL-7	Solenoid Pin	솔레노이드 핀	1	
E-53	DSC-BF006300	BL-7	Screw(11/64"n=40)	하축 뒷 붓싱 짐나사	1	
E-54	DSC-CA000400	BL-7	Screw(11/64"n=40)	오일 펌프 조인트 나사	1	
E-55	PSN-AA000200	BL-7	Nut(M5×P0.8)	솔레노이드 핀 너트	1	
E-56	10-004A-6400	BL-7	Thread Trimming Solenoid Ass'y	사절 솔레노이드(조)	1조	
E-57	CTT-BB002800	BL-7	Base for E-51	사절 솔레노이드 베이스	1	

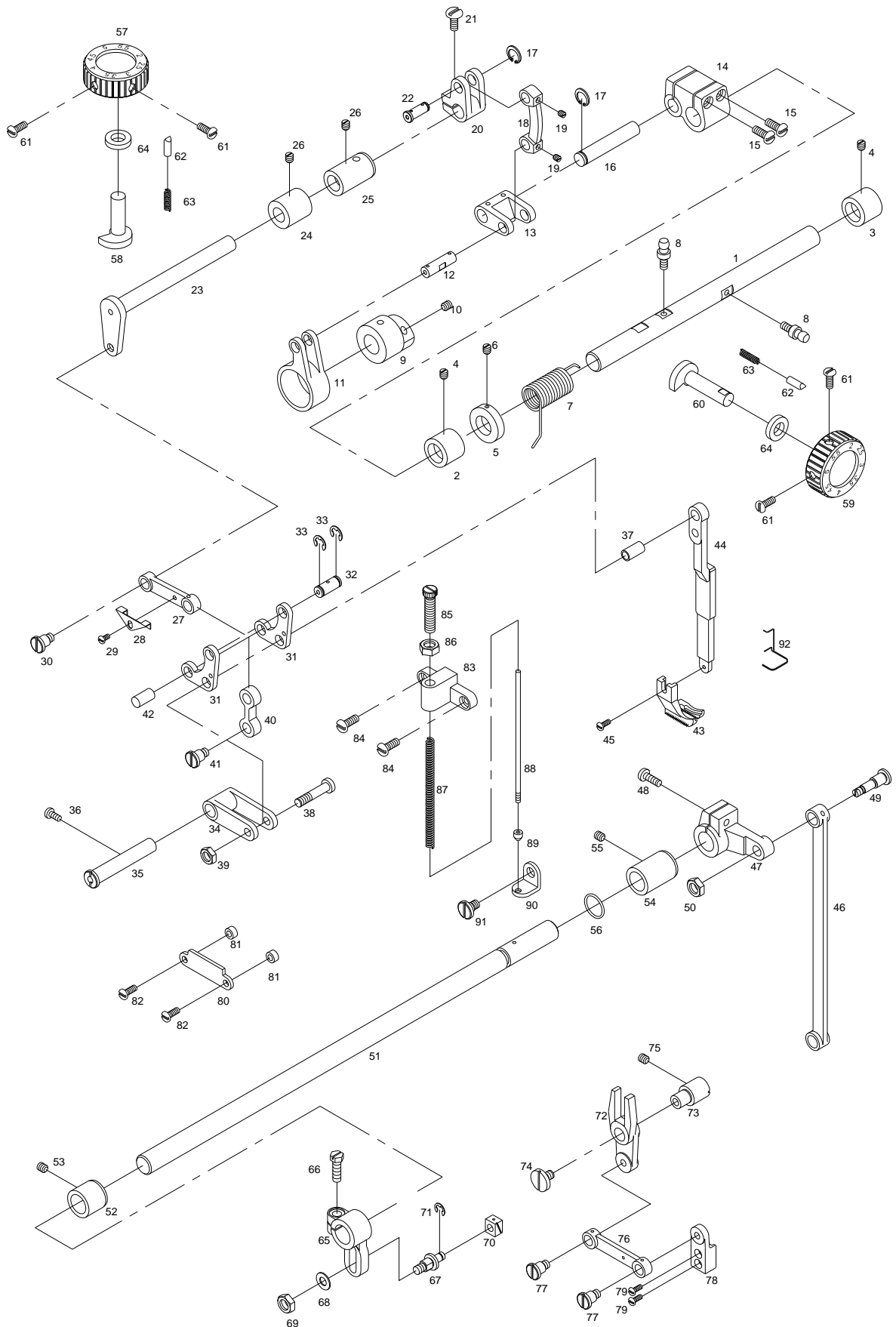
NOTE: BL: KM-640BL
 BL-7: KM-640BL-7
 □=Common Part



F

Upper Feed Mechanism

상 피이드 관계





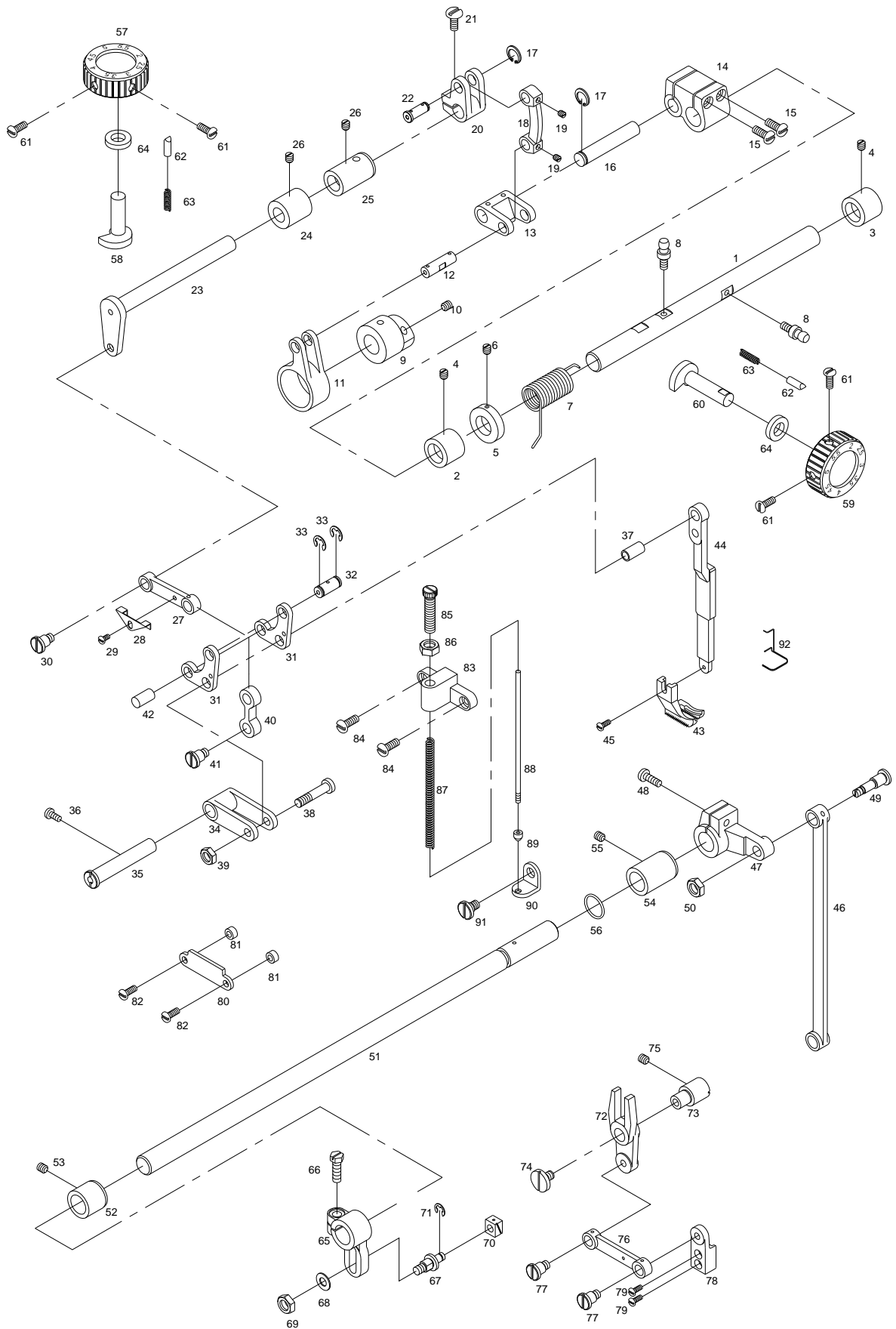
Ref. No.	Parts No.	Note	Name of Parts	품 명	Q'ty	Assembly
F-1	CUF-KC000400		Climb Device Adjusting Shaft	노루발 상하 운동 조절축	1	
F-2	DBS-DA022500		Climb Device Adjusting Shaft Bushing(Front)	노루발 상하 운동 조절축 전 붓싱	1	
F-3	DBS-DA020300		Climb Device Adjusting Shaft Bushing(Rear)	노루발 상하 운동 조절축 후 붓싱	1	
F-4	DSC-CA001600		Screw(11/64"n=40)	실닛추기 고정나사	2	
F-5	DCL-AA006400		Collar for F-1	노루발 상하 운동 조절축 카라	1	
F-6	DSC-CA000500		Screw(1/4"n=40)	노루발 상하 운동 조절축 카라 접나사	2	
F-7	DSP-AC005400		Return Spring for F-1	노루발 상하 운동 조절축 복귀 스프링	1	
F-8	DSC-HD001200		Holder for F-7	노루발 상하 운동 조절축 복귀 스프링 걸이	2	
F-9	CUF-DC000200		Upper Feed Driving Eccentric Cam	노루발 상하 운동 캠	1	
F-10	DSC-CA000500		Screw(1/4"n=40)	노루발 상하 운동 캠 접나사	2	
F-11	CUF-CC001000		Upper Feed Driving Eccentric Cam Rod	노루발 상하 운동 캠 로드	1	
F-12	DPN-AA012700		Connecting Pin for F-11	노루발 상하 운동 캠 로드 연결 핀	1	
F-13	CUF-CA001600		Connecting Link for F-11	노루발 상하 운동 캠 로드 연결 링크	1	
F-14	CUF-CB000900		Upper Feed Driving Control Crank	노루발 상하 운동 조절 크랭크	1	
F-15	DSC-BJ005100		Screw(3/16"n=28)	톱니 받침 크랭크 접나사	4	
F-16	CUF-KG000100		Connecting Shaft for F-14	노루발 상하 운동 조절 크랭크 연결축	1	
F-17	RI-000045-00		C-Ring for F-16	노루발 상하 운동 조절 크랭크 연결축 C-링	2	
F-18	CUF-CA000800		Upper Feed Driving Connecting Link	노루발 상하 운동 연결 링크	1	
F-19	DSC-CB000700		Screw(M5)	실 닷추기 고정나사	2	
F-20	CUF-CB001000		Upper Feed Driving Crank	노루발 상하 운동 크랭크	1	
F-21	DSC-BJ000600		Screw(15/64"n=28)	포크 접나사	1	
F-22	PN-000577-00		Connecting Pin for F-20	노루발 상하 운동 크랭크 연결핀	1	
F-23	CUF-KZ000401		Upper Feed Driving Shaft	노루발 상하 운동 축	1	
F-24	DBS-DA020100		Upper Feed Driving Shaft Front Bushing	노루발 상하 운동 축 전 붓싱	1	
F-25	DBS-DA020200		Upper Feed Driving Shaft Rear Bushing	노루발 상하 운동 축 후 붓싱	1	
F-26	DSC-CA000100		Screw(15/64"n=28)	실채기 힌지 핀 나사	2	
F-27	CUF-CC001100		Upper Feed Driving Rod	노루발 상하 운동 로드	1	
F-28	CLB-BG004700		Upper Feed Driving Rod Wick Holder	노루발 상하 운동 로드 유심잡이	1	
F-29	DSC-BA000900		Screw(9/64"n=40)	면판 측면 카바 나사(하)	1	
F-30	DSC-FA016600		Hinge Screw for Upper Feed Driving Rod	노루발 상하 운동 로드 단나사	1	
F-31	CUF-CA000900		Upper Feed Connecting Link	노루발 연결링크	2	
F-32	DPN-AA012000		Upper Feed Connecting Link Pin	노루발 연결링크 핀	1	
F-33	PSR-AC000500		E-Ring for F-32	노루발 연결링크 핀 E-링	2	
F-34	CUF-CB001100		Upper Feed Lever Rock Crank	노루발대 요동 크랭크	1	
F-35	CUF-KG000200		Upper Feed Lever Rock Crank Shaft	노루발대 요동 크랭크축	1	
F-36	DSC-BA002800		Screw(15/64"n=28)	제어체 운동 조절 나사(대)	1	
F-37	DPN-AA011700		Upper Feed Lever Connecting Pin	노루발대 연결핀	1	
F-38	DSC-FA016700		Upper Feed Lever Driving Link Hinge Screw	노루발대 상하운동 링크 단나사	1	
F-39	DSN-AA000700		Nut(15/64"n=28)	세구멍 실걸이 너트	1	
F-40	CUF-CA001000		Presser Bar Bracket Connecting Link	누름대 브라켓 연결링크	1	
F-41	DSC-FA016600		Hinge Screw for F-40	누름대 브라켓 연결링크 단나사	1	
F-42	DPN-AA011800		Pin for F-40	누름대 브라켓 연결링크 핀	1	
F-43	CGA-GC002300		Upper Feed Presser Foot	노루발	1	
F-44	CUF-CM000200		Upper Feed Lever	노루발대	1	
F-45	DSC-BA000900		Screw(9/64"n=40)	면판측면 카바 나사(하)	1	
F-46	CUF-CC001300		Upper Feed Lever Level Driving Rod	노루발대 수평운동 로드	1	
F-47	CUF-CB001200		Upper Feed Lever Level Driving Shaft Crank(Rear)	노루발대 수평운동축 크랭크(후)	1	
F-48	DSC-BF002900		Screw(15/64"n=28)	상피이드 노루발 압력 조절 나사	1	
F-49	DSC-GA001000		Hinge Screw for Upper Feed Lever Level Driving Shaft Crank(Rear)	노루발대 수평운동축 크랭크(후) 단나사	1	
F-50	DSN-AA002200		Nut(9/32"n=28)	피이드 조절기 연결 단나사 너트	1	
F-51	CUF-KC000501		Upper Feed Lever Level Driving Shaft	노루발대 수평운동축	1	
F-52	DBS-DA018500		Upper Feed Lever Level Driving Shaft Front Bushing	수평운동축 붓싱	1	
F-53	DSC-CA001700		Screw(15/64"n=28)	바늘대 붓싱 나사	1	
F-54	DBS-DA020500		Upper Feed Lever Level Driving Shaft Rear Bushing	노루발대 수평운동축 후 붓싱	1	
F-55	DSC-CA001700		Screw(15/64"n=28)	바늘대 붓싱 나사	1	
F-56	PPK-BA000900		O-Ring for F-51	노루발대 수평운동축 O-링	1	
F-57	CUF-CQ000400		Climb Device Dial Ass'y(Top Cover)	Climb Device 다이알(윗뚜껑) 조	1조	

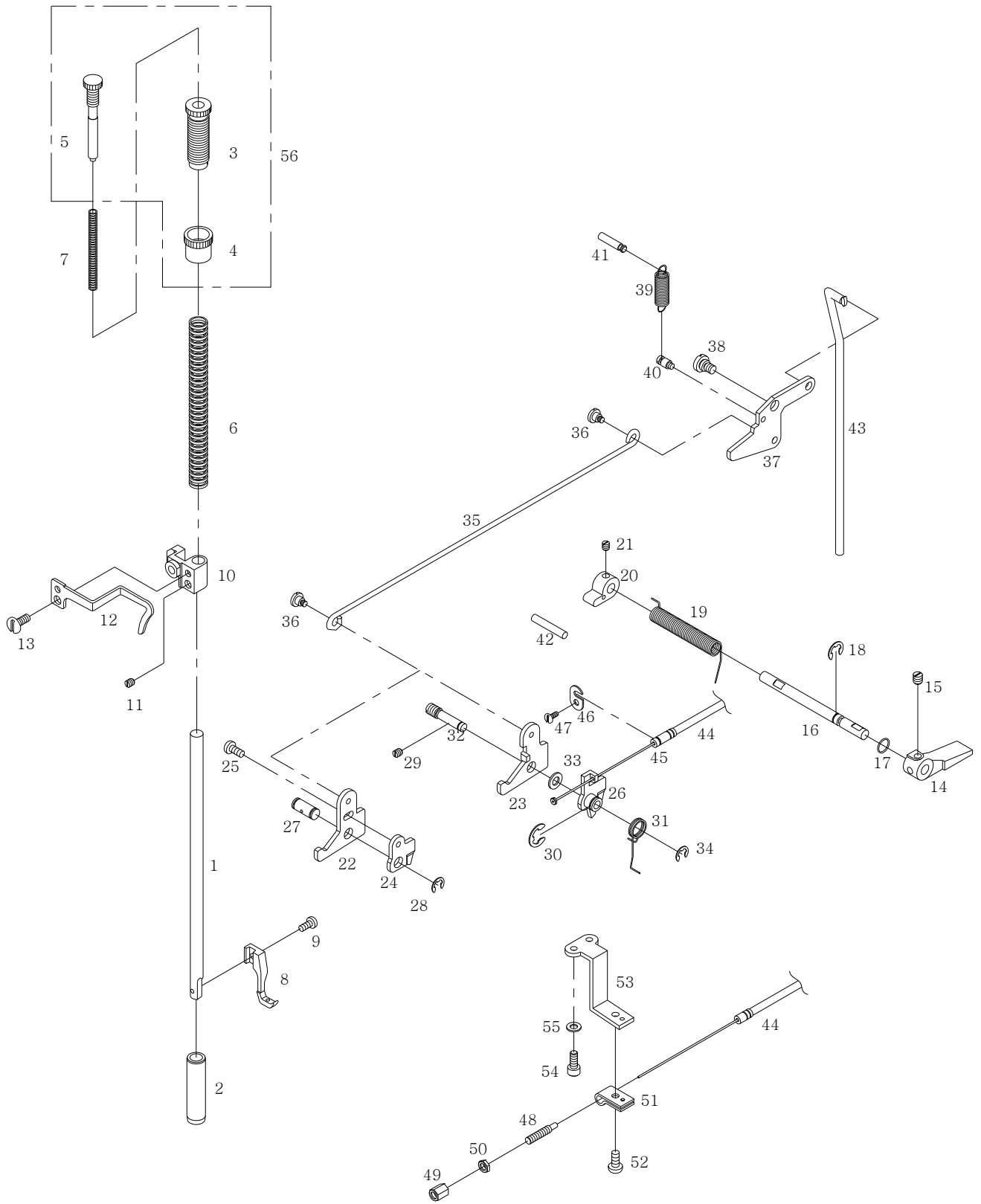
NOTE: BL: KM-640BL
 BL-7: KM-640BL-7
 □=Common Part

F

Upper Feed Mechanism

상 피이드 관계

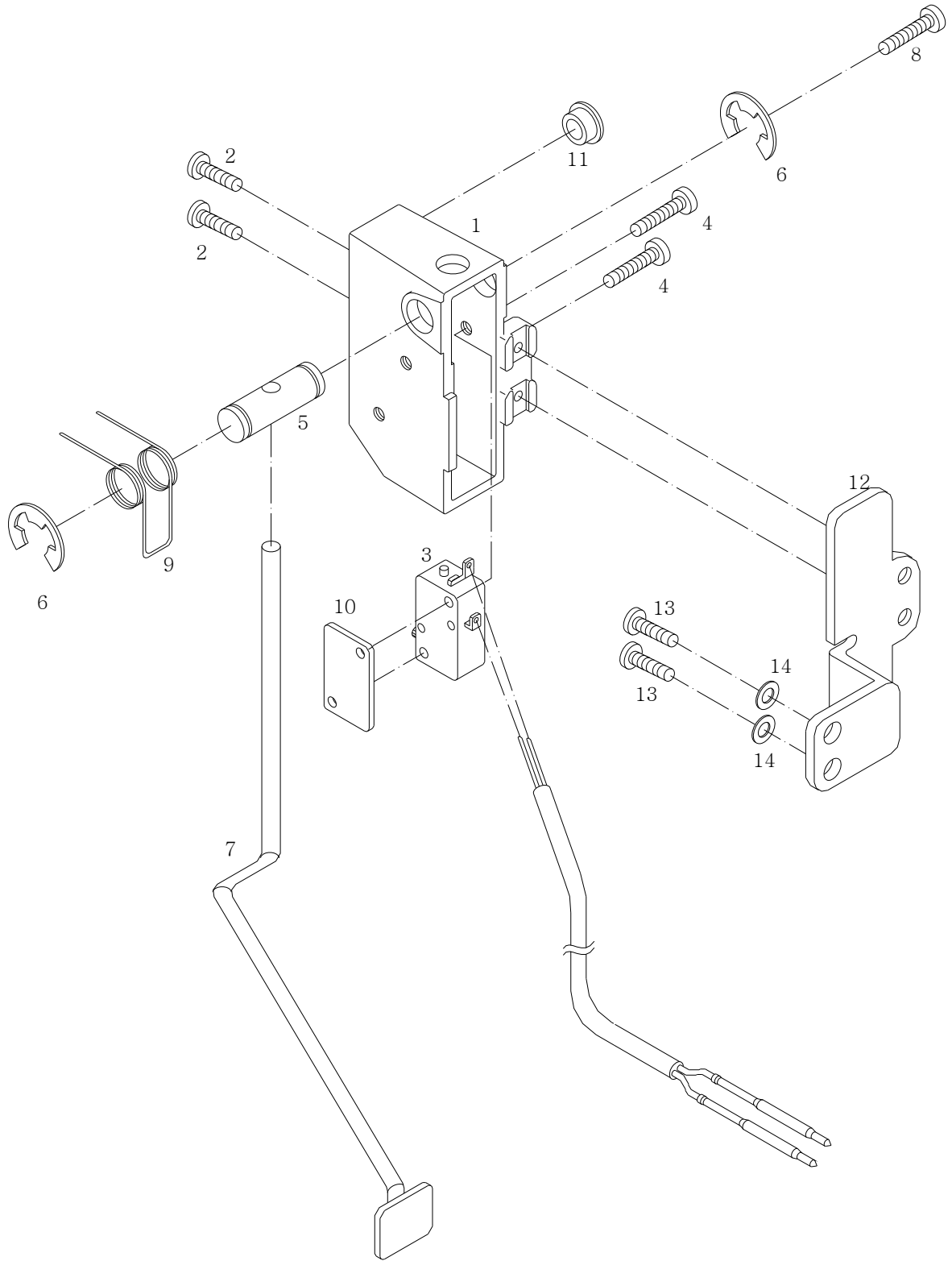


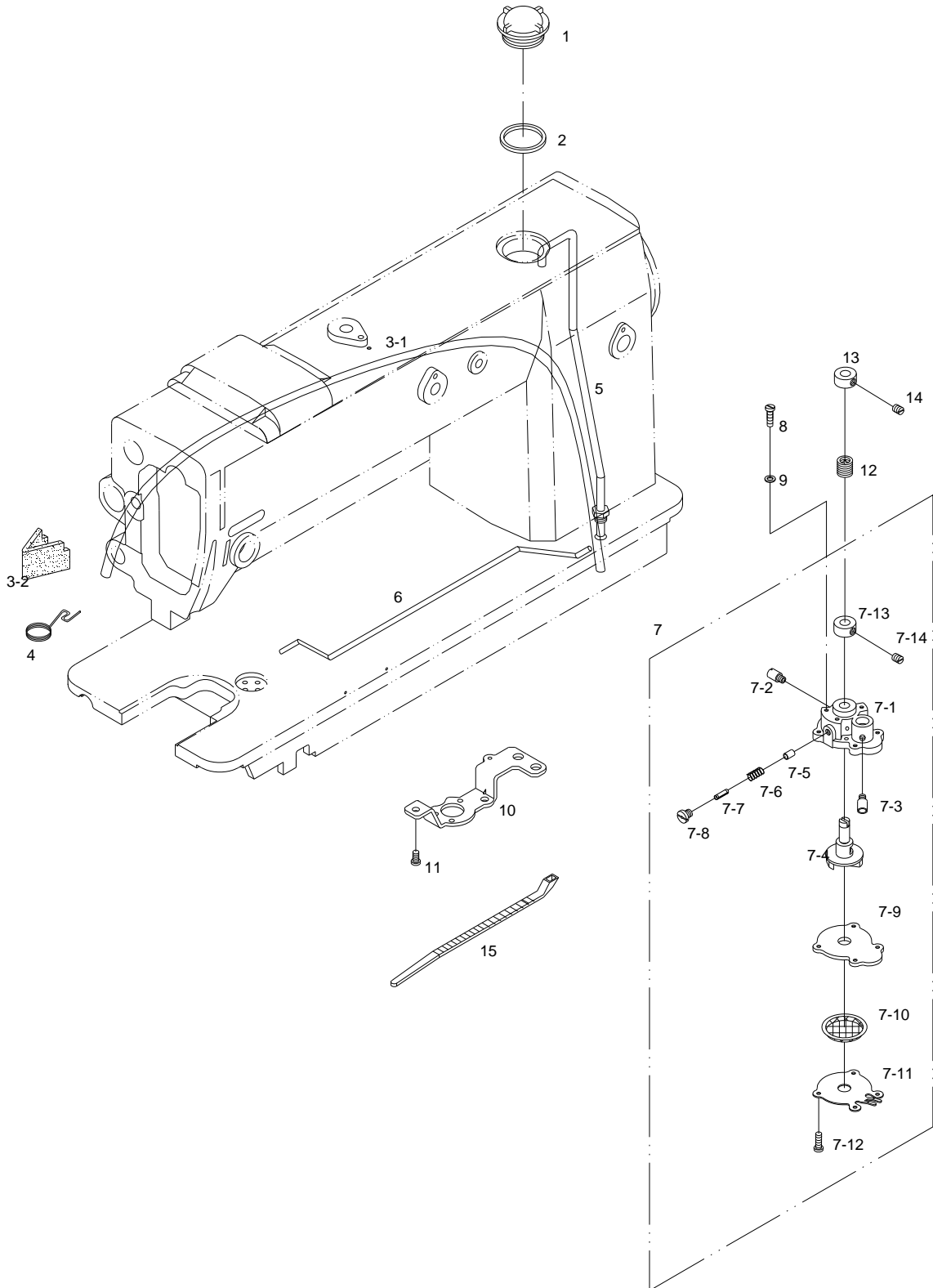




Ref. No.	Parts No.	Note	Name of Parts	품 명	Q'ty	Assembly
G-1	CPB-CR000300		Presser Bar	누름대	1	
G-2	DBS-DA020400		Presser Bar Bushing	누름대 붓싱	1	
G-3	DSC-HA000400		Pressure Adjusting Screw	압력 조절나사	1	
G-4	DSN-CC000500		Nut for Pressure Adjusting Screw	압력 조절나사 너트	1	
G-5	DSC-HA000600		Sub Pressure Adjusting Screw	보조 압력 조절나사	1	
G-6	DSP-AA008800		Pressure Adjusting Spring	압력 조절 스프링	1	
G-7	DSP-AA008900		Sub Pressure Adjusting Spring	보조 압력 조절 스프링	1	
G-8	CGA-GC002200		Sub Press Foot	보조 노루발	1	
G-9	DSC-BA001700		Screw(9/64"n=40)	보조 노루발 체결나사	1	
G-10	CPB-BB000700		Presser Bar Bracket	누름대 브라켓	1	
G-11	DSC-CA003500		Screw(15/64"n=28)	피이드 캠 고정나사	1	
G-12	CPB-BJ000900		Thread Guide Plate	실결이 판	1	
G-13	DSC-BA001000		Screw(11/64"n=40)	인봉카라 체결나사	1	
G-14	CPB-CM000500		Presser Bar Lifter	누름대 올리기	1	
G-15	DSC-CB000700		Screw(M5)	캠 접촉 카라 고정나사	2	
G-16	CPB-KC001000		Presser Bar Lifter Shaft	누름대 올리기 축	1	
G-17	PPK-BA000400		O-Ring for G-16	누름대 올리기 축 O-링	1	
G-18	PSR-AC000300		E-Ring for G-16	누름대 올리기 축 E-링	1	
G-19	DSP-AC005700		Torsion Spring for G-14	누름대 올리기 토션 스프링	1	
G-20	CPB-DF000600		Presser Lifter Cam	누름대 올리기 캠	1	
G-21	DSC-CA000500		Screw(1/4"n=40)	누름대 올리기 캠 체결나사	1	
G-22	43-009P-640L	BL	Presser Bar Lifting Link	누름대 올림 링크	1	
G-23	CPM-CA001200	BL-7	Presser Bar Lifting Link	누름대 올림 링크	1	
G-24	43-010P-640L	BL	Tension Release Plate	실 늦추기 작동판	1	
G-25	DSC-BF003600	BL	Screw(11/64"n=40)	실체기 카바 나사	1	
G-26	CTR-BJ001600	BL-7	Tension Release Plate Ass'y	실 늦추기 작동판(조)	1조	
G-27	15-132P-640L	BL	Presser Bar Lifting Link Pin	누름대 올림 링크 핀	1	
G-28	PSR-AC000300	BL	E-Ring for G-27	누름대 올림 링크 핀 E-링	1	
G-29	DSC-CA000400		Screw(11/64"n=40)	오일 펌프 조인트 나사	1	
G-30	PSR-AC000600	BL-7	E-Ring for G-24-1(Ø8)	실 늦추기 안내 붓싱 E-링(Ø8)	1	
G-31	DSP-AC005800	BL-7	Spring for G-26	실 늦추기 스프링	1	
G-32	CTR-KZ000100	BL-7	Shaft for G-26	실 늦추기 축	1	
G-33	DWS-AA000400	BL-7	Washer for G-32	실 늦추기 축 와셔	1	
G-34	DWS-AA009500	BL-7	E-Ring for G-32(Ø5)	실 늦추기 E-링(Ø5)	1	
G-35	CPM-BH000800		Presser Bar Lifting Link Connecting Stick	실 늦추기 스토퍼 누름대 올림 링크 연결봉	1	
G-36	DSC-FA016900		Hinge Screw for Presser Bar Connecting Stick	누름대 연결봉 단나사	2	
G-37	CPM-CA001300		Knee Lifting Link	무릎올림 링크	1	
G-38	DSC-FA013300		Hinge Screw for G-37	무릎올림 링크 단나사	1	
G-39	DSP-AB004300		Spring for G-37	무릎올림 링크 스프링	1	
G-40	DSC-HD001300		Connecting Screw for G-39	무릎올림 링크 스프링 연결나사	1	
G-41	DPN-BA000800		Holder for G-39	무릎올림 링크 스프링 걸이	1	
G-42	DPN-AA012900		Stopper Pin for G-20	누름대 올리기 캠 스토퍼 핀	1	
G-43	CPM-CR000700		Knee Lifting Bar Stick	무릎올림 봉	1	
G-44	40-033A-64L7	BL-7	Tension Release Cable Ass'y	실 늦추기 케이블(조)	1조	
G-46	CTR-BG000500	BL-7	Tension Release Cable Holder(U)	실 늦추기 케이블 잡이(상)	1	
G-47	DSC-BJ001400	BL-7	Screw	윗뚜껑 고정판 고정나사(대)	1	
G-48	DSC-HZ001100	BL-7	Connecting Bolt for G-44	케이블 연결 볼트	1	
G-49	DSN-AA002400	BL-7	Nut A for G-44	케이블 연결 너트 A	1	
G-50	PSN-AA001700	BL-7	Nut B for G-44	케이블 연결 너트 B	1	
G-51	CTR-BG000400	BL-7	Tension Release Cable Holder(L)	실 늦추기 케이블 잡이(하)	1	
G-52	DSC-BJ000200	BL-7	Screw	톱 카바 힌지 고정나사	1	
G-53	CTR-BB001000	BL-7	Bracket for G-51	실 늦추기 케이블 잡이(하) 브라켓	1	
G-54	PSC-AC000700	BL-7	Screw for G-53	톱니 고정나사	2	
G-55	DWS-AA001100	BL-7	Washer for G-53	실 늦추기 케이블 잡이(하) 브라켓 평와셔	2	
G-56	AS-007629-00	BL-7	Press Adjust Screw(set)	압력 조절 나사 (조)	1	

NOTE: BL: KM-640BL
 BL-7: KM-640BL-7
 □=Common Part



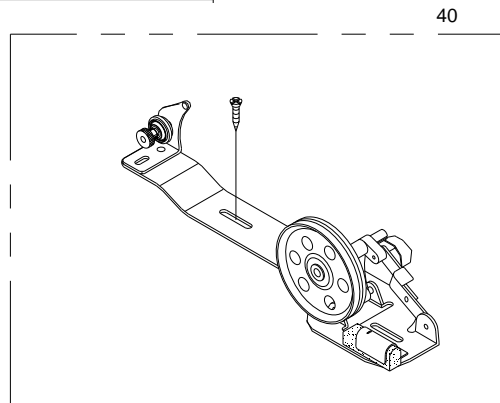
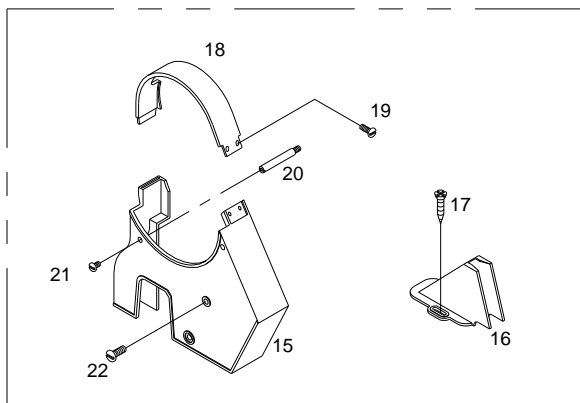
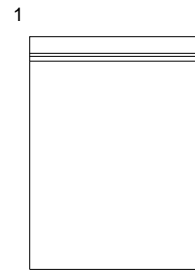
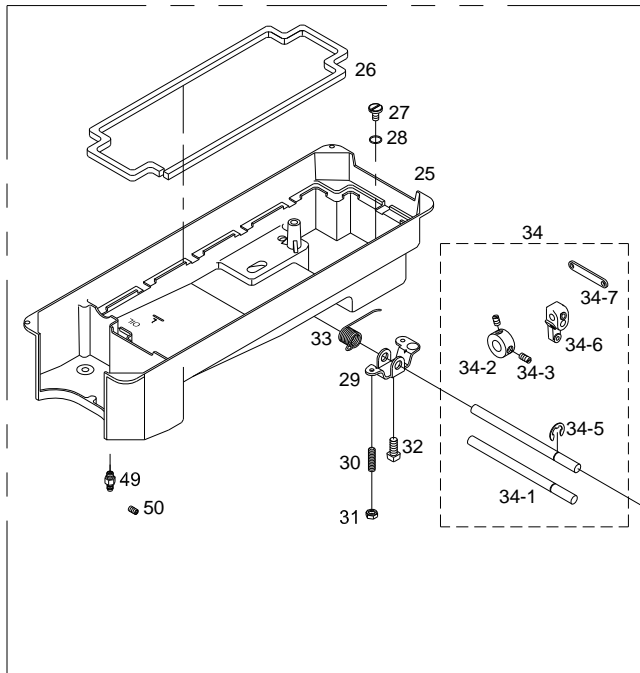
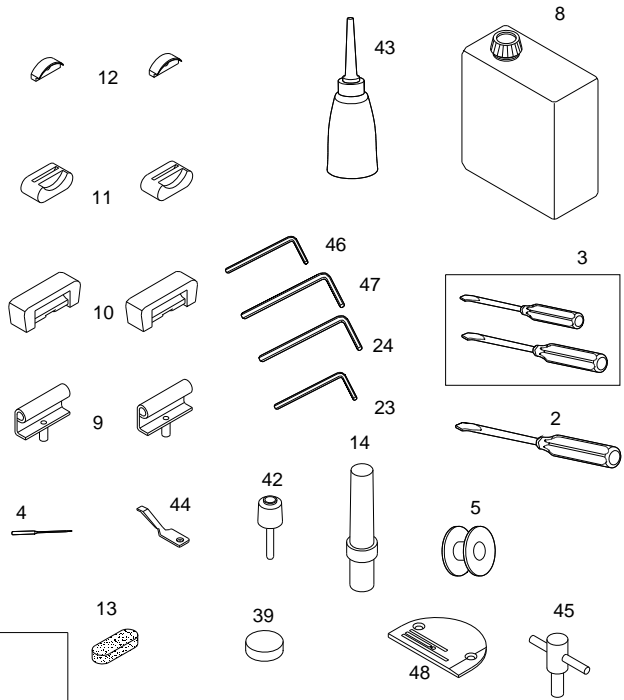
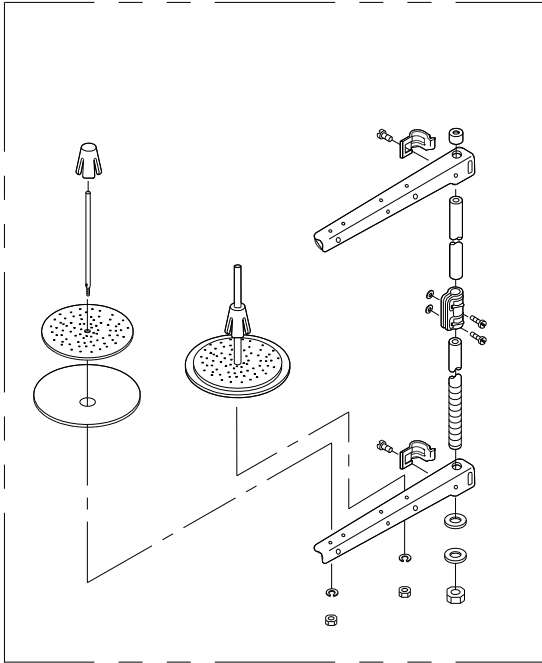


J

Accessories Mechanism

액세서리 관계

41



Ref. No.	Parts No.	Note	Name of Parts	품 명	Q'ty	Assembly
J-1	91-001C-1230		Accessory Bag	액세서리 백	1	
J-2	PTL-BA000100		Driver(Large)	드라이버(大)	1	
J-3	PTL-BA000200		Driver(Middle, Small)	드라이버(中, 小)	1	
J-4	006-00T-002		Needle(DP×17 #22)	바늘	5	
J-5	CHK-HB000700		Bobbin(Steel)	보빈	4	
J-7	91-108M-640L		Head Cover	미싱커버	1	
J-8	CAC-MD000300		Oil Tank	오일통	1	
J-9	CST-BB002500		Head Hinge	베드힌지	2	
J-10	CST-FF000400		Head Hinge Rubber	베드힌지 고무	2	
J-11	CST-FD001100		Head Support Rubber "A"	베드지지 고무A	2	
J-12	CST-FD001200		Head Support Rubber "B"	베드지지 고무B	2	
J-13	CLB-JL007300		Upper Thread Oil Felt	윗실 급유 헬트	1	
J-14	CST-CR000700		Head Rest	두부 지지 봉	1	
J-15	CMB-LA013700		Belt Cover "A" Ass'y	벨트 커버 A(조)	1조	
J-16	CMB-LA006200		Belt Cover "B"	벨트 커버 B	1	
J-17	PSC-DD000100		Set Screw for J-16	벨트 커버 B 고정나사	2	
J-18	CMB-LA014700		Belt Cover "C"	벨트 커버 C	1	
J-19	DSC-HB002200		Belt Cover "A", "C" Connecting Screw	벨트 커버 A, C 연결나사	2	
J-20	60-005S-640L		Belt Cover Support Screw	벨트 커버 지지나사	1	
J-21	DSC-BA000300		Screw (11/64" n=40)	하축 카라 고정나사	1	
J-22	DSC-BF000700		Screw (15/64" n=28)	베이스 고정나사 B	2	
J-23	PTL-AB000100		L-Wrench(2mm)	L-렌치(2mm)	1	
J-24	PTL-AB000300		L-Wrench(2.5mm)	L-렌치(2.5mm)	1	
J-25	CST-JA001800		Oil Pan	오일팬	1	
J-26	CST-FC000200		Oil Pan Gasket	오일팬 가스켓	2	
J-27	DSC-BF006100		Screw(M8×1.25)	배유 구멍 마개 나사	1	
J-28	CST-FB000200		O-Ring for J-27	배유 구멍나사 O-링	1	
J-29	CST-BB003700		Control Body	제어체	1	
J-30	DSC-CA003800		Screw(3/16" n=28)	제어체 운동 조절나사(소)	2	
J-31	DSN-AA000800		Nut(3/16" n=28)	제어체 운동 조절나사 너트	2	
J-32	DSC-AA000300		Screw (15/64" n=28)	포크 칩나사(육각)	1	
J-33	DSP-AC005600		Control Body Spring	제어체 스프링	1	
J-34	43-001A-64L7		Knee Lifting Pad Ass'y	무릎올림(조)	1Set	
J-34-1	CST-KC000900		Control Body Shaft	제어체 축	2	
J-34-2	43-003A-64L7		Collar	카라	1	
J-34-3	DSC-CA001700		Screw	바늘대 붓싱 나사	2	
J-34-5	PSR-AC000100		E-Ring for J-34	제어체 축 E-링	2	
J-34-6	43-104A-64L7		Connection Crank	연결받침 크랭크	1	
J-34-7	43-102A-64L7		Connection Bar	무릎올림 연결바	1	
J-36	CST-CB000100		Knee Support Shaft Connecting Joint	무릎받침 축 연결 조인트	1	
J-37	DSC-CC000100		Screw(M6×1.0)	연결 조인트 고정나사	4	
J-38	CST-FZ000100		Knee Support Rubber Ass'y	무릎받침 고무(조)	1조	
J-39	DTC-AK000300		Magnetic	자석	1	
J-40	GP-018166-00		Bobbin Winder Ass'y	사권(조)	1조	
J-41	CST-MF000100		Thread Stand Ass'y	실패꽃이(조)	1조	
J-42	CST-CR000600		Knee Lifting Stick Support Cap	무릎올림봉 받침 캡	1	
J-43	CAC-JB000100	BL-7	Oil Tank	유차	1	
J-44	CTT-NB001401	BL-7	Fixed Mes	고정메스	1	
J-45	91-105C-2700		Spanner	고정메스 장력 조절용 스패너	1	
J-46	PTL-AB000200		L-Wrench(5mm)	L-렌치(5mm)	1	
J-47	91-0031-2700		L-Wrench(3mm)	L-렌치(3mm)	1	
J-48	CGA-GA001500		Needle Plate	침판	1	
J-49	CLB-JP002500		Oil Pan Nipple	오일팬 니플	1	
J-50	DSC-CA003500		Screw(15/64" n=28)	피드캠 칩나사(15/64" n=28)	1	

NOTE: BL: KM-640BL
 BL-7: KM-640BL-7
 □=Common Part

Index

Parts No.	Name of Parts	Page	Ref.No.	Parts No.	Name of Parts	Page	Ref.No.	Parts No.	Name of Parts	Page	Ref.No.
006-00T-002	Needle(DP×17 #22)	33	J-4	CGA-GC0022	Sub Press Foot	27	G-8	CMB-LA0135	Back Cover(A)	7	A-30
01-001A-640L	Arm, Bed	7	A-1	CGA-GC0023	Upper Feed Presser Foot	23	F-43	CMB-LA0136	Thread Take Up Cover	7	A-7
01-028A-640L	Back Cover(B)	7	A-32	CHK-HA0012	Rotary Hook Assembly	13	C-25	CMB-LA0137	Belt Cover "A" Ass'y	33	J-15
01-035P-1370	Machine Number Plate	7	A-25	CHK-HA0013	Rotary Hook Assembly	13	C-26	CMB-LA0147	Belt Cover "C"	33	J-18
01-035P-7400	Pin For A-25	7	A-26	CHK-HB0007	Bobbin	13	C-27	CMB-LD0018	Model Mark(KM-640BL)	7	A-23
01-129C-640L	Gasket For Back Cover(B)	7	A-33	CHK-HB0007	Bobbin(Steel)	33	J-5	CNB-BK0010	Needle Bar Guide Slide Block	11	B-34
02-013A-3710	Collar for D-64	17	D-67	CHK-HC0005	Bobbin Case Assembly	13	C-29	CNB-CR0003	Needle Bar	11	B-31
02-014A-640L	Screw(1/4"n=40)	11	B-20	CHK-HC0009	Bobbin Case Assembly	13	C-30	CNB-HK0015	Needle Bar Thread Guide	11	B-35
02-0180-1230	Upper Shaft Urethan Washer	11	B-7	CHK-HH0004	Inner Bobbin Stopper	13	C-31	CPB-BB0007	Presser Bar Bracket	27	G-10
06-0001-6400	B/T Solenoid Ass'y	7	A-37	CLB-BB0015	Oil Pump Bracket	31	I-10	CPB-BH0008	Needle Bar Safety Guide	25	F-92
06-107A-640L	Feed Regulator	15	D-7	CLB-BG0021	Magnetic Holder	31	I-7-11	CPB-BJ0009	Thread Guide Plate	27	G-12
06-118A-640L	Reverse Feed Lever Crank Ass'y	15	D-17	CLB-BG0047	Upper Feed Driving Rod Wick Holder	23	F-28	CPB-CM0005	Presser Bar Lifter	27	G-14
07-107A-250A	Lower Shaft Front Bushing	13	C-18	CLB-BG0048	Holder for Upper Thread Oil Supply	9	A-66	CPB-CR0003	Presser Bar	27	G-1
10-004A-6400	Thread Trimming Solenoid Ass'y	19	E-56	CLB-BH0019	Oil Return Felter Holder	31	I-4	CPB-DF0006	Presser Lifter Cam	27	G-20
11-0000-2507	Synchronizer Ass'y	11	B-37	CLB-BR0001	Impeller	31	I-7-4	CPB-KC0010	Presser Bar Lifter Shaft	27	G-16
11-020A-2500	Magnetic Holder	11	B-38	CLB-CN0002	Piston	31	I-7-5	CPM-BH0008	Presser Bar Lifting Link Connecting Stick	27	G-35
11-021S-2500	Screw for B-38	11	B-40	CLB-JC0002	Oil Pump Body	31	I-7-1	CPM-CA0012	Presser Bar Lifting Link	27	G-23
11-022W-2500	Washer for B-38	11	B-39	CLB-JF0017	Lower Shaft Oil Supply Pipe	31	I-6	CPM-CA0013	Knee Lifting Link	27	G-37
11-023A-2500	Synchronizer	11	B-41	CLB-JG0003	Oil Return Tube	31	I-3-1	CPM-CR0007	Knee Lifting Bar Stick	27	G-43
11-024A-2500	Screw for B-41	11	B-42	CLB-JJ0004	Oil Gauge Window	31	I-1	CRB-BA0001	Button Case Base	29	H-12
12-104P-5607	Reverse Button Actuator Pin	29	H-5	CLB-JL0016	Upper Shaft Felt	11	B-6	CRB-FD0001	Insulated Rubber	29	H-10
12-131A-5607	Reverse Button S/W Ass'y	29	H-3	CLB-JL0024	Lower Shaft Felt	13	C-12	CRB-LC0001	Reverse Button Case	29	H-1
15-132P-640L	Presser Bar Lifting Link Pin	27	G-27	CLB-JL0071	Oil Return Felter	31	I-3-2	CST-BB0025	Head Hinge	33	J-9
40-001A-257A	Sub Upper Thread Tension Ass'y Control	7	A-13	CLB-JL0073	Upper Thread Oil Felt	7	A-21	CST-BB0037	Control Body	33	J-29
40-033A-64L7	Tension Release Cable Ass'y	27	G-44	CLB-JL0073	Upper Thread Oil Felt	33	J-13	CST-CB0001	Knee Support Shaft Connecting Joint	33	J-36
43-001A-64L7	Knee Lifting Pad Ass'y	33	J-34	CLB-JM0004	Oil Pump Cap	31	I-7-10	CST-CR0006	Knee Lifting Stick Support Cap	33	J-42
43-003A-64L7	Collar	33	J-34-2	CLB-JP0005	Nipple for Oil Return Tube	31	I-7-2	CST-CR0007	Head Rest	33	J-14
43-009P-640L	Presser Bar Lifting Link	27	G-22	CLB-JP0006	Nipple for Lower Shaft Oil Supply	31	I-7-3	CST-FB0002	O-Ring for J-27	33	J-28
43-010P-640L	Tension Release Plate	27	G-24	CLB-JP0025	Oil Pan Nipple	33	J-49	CST-FC0002	Oil Pan Gasket	33	J-26
43-102A-64L7	Connection Bar	33	J-34-7	CLB-LB0001	Oil Pump Cover	31	I-7-9	CST-FD0011	Head Support Rubber "A"	33	J-11
43-104A-64L7	Connection Crank	33	J-34-6	CLF-BA0005	Feed Bar	17	D-96-1	CST-FD0012	Head Support Rubber "B"	33	J-12
44-005A-640L	Upper Shaft Oil Supply Pipe Ass'y	31	I-5	CLF-BJ0014	Slide Block Guide Plate	15	D-37	CST-FF0004	Head Hinge Rubber	33	J-10
44-120S-1230	Screw(9/64"n=40)	31	I-7-12	CLF-BK0002	Slide Block	15	D-39	CST-FZ0001	Knee Support Rubber Ass'y	33	J-38
44-150A-640L	Oil Pump Ass'y	31	I-7	CLF-CB0018	Feed Bar Crank	17	D-70	CST-JA0018	Oil Pan	33	J-25
60-005S-640L	Belt Cover Support Screw	33	J-20	CLF-CB0019	Feed Lifting Shaft Crank(F)	17	D-97	CST-KC0009	Control Body Shaft	33	J-34-1
91-001C-1230	Accessory Bag	33	J-1	CLF-CB0020	Level Feed Shaft Crank(Rear)	15	D-53	CST-MF0001	Thread Stand Ass'y	33	J-41
91-0031-2700	L-Wrench(3mm)	33	J-47	CLF-CB0026	Feed Lifting Shaft Crank(Rear)	15	D-58	CTR-BB0010	Bracket for G-51	27	G-53
91-105C-2700	Spanner	33	J-45	CLF-CC0010	Connecting Rod For D-44	15	D-47	CTR-BG0004	Tension Release Cable Holder(L)	27	G-51
91-108M-640L	Head Cover	33	J-7	CLF-CC0011	Crank Rod	15	D-55	CTR-BG0005	Tension Release Cable Holder(U)	27	G-46
AFA-PS0004	Reverse Feed Lever Crank Ass'y	15	D-18	CLF-CC0015	Feed Connecting Rod	15	D-50	CTR-BJ0016	Tension Release Plate Ass'y	27	G-26
ARB-PS0005	Reverse Feed Control Lever	29	H-7	CLF-CC0016	Connecting Rod For Feed Regulator Shaft	15	D-24	CTR-KZ0001	Shaft for G-26	27	G-32
AS-007377	Arm, Bed	7	A-2	CLF-CD0011	Sliding Black	17	D-96-2	CTT-BB0028	Base for E-51	19	E-57
AS-007629	Press Adjust Screw(set)	27	G-56	CLF-DC0013	Feed Cam	15	D-44	CTT-BB0029	Stopper	19	E-34
AS-016199	Feed Bar Ass'y	17	D-96	CLF-KC0012	Feed Lifting Shaft	17	D-89	CTT-BF0013	Cam Follower Crank	19	E-27
ATA-PS0028	Thread Tension Control Ass'y	9	A-60	CLF-KF0007	Sliding Black Shaft	17	D-96-3	CTT-BF0014	Thread Trimming Holder	19	E-10
CAC-JB0001	Oil Tank	33	J-43	CLF-KH0004	Feed Bar Shaft	17	D-72	CTT-BJ0042	Thread Retaining Plate	19	E-5
CAC-MD0003	Oil Tank	33	J-8	CLF-KK0004	Feed Regulator Shaft	15	D-32	CTT-BJ0044	Base Plate	19	E-47
CFA-BB0012	B/T Solenoid Bracket	7	A-34	CLS-KC0023	Lower Shaft	13	C-10	CTT-CA0012	Thread Trimming Lever Connecting Link	19	E-13
CFA-BF0002	Holder For D-12	15	D-13	CMB-BA0005	Bed Base(Front)	7	A-47	CTT-CA0014	Solenoid Connecting Link	19	E-51
CFA-CB0013	B/T Solenoid Crank	15	D-28	CMB-BA0006	Bed Base(Rear)	7	A-48	CTT-CL0003	Roller	19	E-24
CFA-CM0013	Reverse Feed Lever	15	D-60	CMB-BJ0024	Gauge Plate	7	A-45	CTT-CM0022	Clutch Lever	19	E-40
CFA-CQ0009	Feed Regulator Control Plate	15	D-3	CMB-BJ0051	Slide Plate	7	A-42	CTT-CM0023	Thread Trimming Lever	19	E-16
CFA-DF0007	Feed Regulator	15	D-8	CMB-BJ0053	Face Plate	7	A-4	CTT-CM0024	Stopper Lever	19	E-30
CFA-FC0001	Gasket for B/T Solenoid	7	A-36	CMB-FC0046	Gasket For Top Cover	7	A-28	CTT-CM0025	Slide Arm	19	E-23
CFA-FC0002	Gasket for B/T Solenoid Bracket	7	A-35	CMB-FC0052	Gasket For Back Cover(A)	7	A-31	CTT-DF0004	Mes Cam	19	E-38
CFA-FZ0001	Upper Stopper Rubber for Reverse Lever	17	D-91	CMB-HK0003	Thread Guide With Three Holes	7	A-11	CTT-FD0003	Stopper Lever Cushion Rubber	19	E-37
CFA-KF0006	Feed Adjusting Shaft	15	D-9	CMB-HK0020	Upper Thread Guide Pin Ass'y	7	A-9	CTT-KF0006	Thread Trimming Shaft	19	E-18
CFA-KF0007	Reverse Feed Control Lever Shaft	15	D-15	CMB-HK0059	Arm Thread Guide	7	A-15	CTT-LB0002	Thread Trimming Holder Cover	19	E-11
CFA-KJ0010	Feed Regulator Dial Shaft	15	D-1	CMB-HK0061	Face Plate Thread Guide	7	A-17	CTT-NA0013	Rotary Mes	19	E-8
CGA-GA0015	Needle Plate	7	A-40	CMB-HK0062	Arm Thread Guide Plate(L)	7	A-19	CTT-NB0014	Fixed Mes	19	E-1
CGA-GA0015	Needle Plate	33	J-48	CMB-LA0062	Belt Cover "B"	33	J-16	CTT-NB0014	Fixed Mes	33	J-44
CGA-GB0015	Feed Dog	17	D-79	CMB-LA0134	Top Cover	7	A-27	CUF-BA0003	Fulcrum for F-87	25	F-89

Index

Parts No.	Name of Parts	Page	Ref.No.	Parts No.	Name of Parts	Page	Ref.No.	Parts No.	Name of Parts	Page	Ref.No.
CUF-BA0004	Frame for Upper Feed Pressure Adjusting Screw	25	F-83	DCL-AA0001	Stopper Collar For D-32	15	D-35	DSC-BA0008	Screw(15/64"n=28)	29	H-13
CUF-BA0005	Fulcrum for F-88	25	F-90	DCL-AA0001	Upper Shaft Collar	11	B-17	DSC-BA0009	Screw(9/64"n=40)	23	F-29
CUF-BF0002	Upper Feed Level Holder	25	F-78	DCL-AA0017	Collar for Impeller Shaft	31	I-7-13	DSC-BA0009	Screw(9/64"n=40)	23	F-45
CUF-BJ0001	Upper Feed Lever Support Plate	25	F-80	DCL-AA0026	Oil Pump Connecting Collar	31	I-13	DSC-BA0010	Screw(11/64"n=40)	15	D-49
CUF-CA0008	Upper Feed Driving Connecting Link	23	F-18	DCL-AA0028	Collar for E-18	19	E-32	DSC-BA0010	Screw(11/64"n=40)	27	G-13
CUF-CA0009	Upper Feed Connecting Link	23	F-31	DCL-AA0037	Lower Shaft Collar	13	C-23	DSC-BA0014	Screw(3/16"n=32)	17	D-62
CUF-CA0010	Presser Bar Bracket Connecting Link	23	F-40	DCL-AA0064	Collar for D-89	17	D-85	DSC-BA0017	Screw(9/64"n=40)	27	G-9
CUF-CA0011	Upper Feed Level Driving Link	25	F-72	DCL-AA0064	Collar for F-1	23	F-5	DSC-BA0028	Screw(15/64"n=28)	23	F-36
CUF-CA0016	Connecting Link for F-11	23	F-13	DCL-BB0020	B/T Solenoid Crank Spacer	15	D-31	DSC-BA0031	Screw For Face Plate(Upper)	7	A-5
CUF-CB0009	Upper Feed Driving Control Crank	23	F-14	DCL-BB0021	Climb Device Dial Support Ring	25	F-64	DSC-BB0008	Screw(9/64"n=40)	19	E-2
CUF-CB0010	Upper Feed Driving Crank	23	F-20	DCL-BB0022	Upper Feed Lever Support Plate Ring	25	F-81	DSC-BB0014	Screw(11/64"n=40)	19	E-9
CUF-CB0011	Upper Feed Lever Rock Crank	23	F-34	DGR-AD0001	Upper Shaft Gear Ass'y	11	B-19	DSC-BB0020	Screw(1/8"n=40)	19	E-3
CUF-CB0012	Upper Feed Level Level Driving Shaft(Crank/Rear)	23	F-47	DGR-AD0002	Upright Shaft Upper Gear Ass'y	13	C-2	DSC-BB0020	Screw(9/64"n=40)	19	E-12
CUF-CB0013	Upper Feed Level Level Adjusting Crank	25	F-65	DGR-AD0003	Upright Shaft Lower Gear Ass'y	13	C-8	DSC-BC0001	Screw(11/64"n=40)	7	A-41
CUF-CC0010	Upper Feed Driving Eccentric Cam Rod	23	F-11	DGR-AD0004	Lower Shaft Gear Ass'y	13	C-11	DSC-BC0001	Screw(11/64"n=40)	7	A-46
CUF-CC0011	Upper Feed Driving Rod	23	F-27	DPK-CA0003	Feed Regulator Shaft Rubber Cap	7	A-52	DSC-BD0003	Screw For A-43	7	A-44
CUF-CC0012	Upper Feed Level Driving Rod	25	F-76	DPK-CA0004	Climb Device Adjusting Shaft Rubber Cap	7	A-53	DSC-BF0001	Screw(1/8"n=44)	11	B-36
CUF-CC0013	Upper Feed Lever Level Driving Rod	23	F-46	DPK-CA0005	Feed Adjusting Shaft Rubber Cap	7	A-54	DSC-BF0004	Screw(15/64"n=28)	15	D-52
CUF-CD0001	Block	25	F-70	DPK-CA0006	Bed Rubber Cap	7	A-50	DSC-BF0006	Screw(3/16"n=28)	31	I-11
CUF-CM0002	Upper Feed Lever	23	F-44	DPK-CB0001	Arm Upper Part Rubber Cap(Large)	7	A-58	DSC-BF0007	Screw (15/64"n=28)	33	J-22
CUF-CQ0001	Climb Device Dial Ass'y(Arm)	25	F-59	DPK-CB0001	Top Cover Rubber Cap	7	A-51	DSC-BF0008	Screw(15/64"n=28)	11	B-25
CUF-CQ0004	Climb Device Dial Ass'y(Top Cover)	23	F-57	DPK-CB0002	Arm Back Part Rubber Cap(Middle)	7	A-56	DSC-BF0010	Screw(11/64"n=40)	19	E-17
CUF-DC0002	Upper Feed Driving Eccentric Cam	23	F-9	DPK-CB0002	Face Plate Rubber Cap	7	A-49	DSC-BF0010	Screw(11/64"n=40)	29	H-8
CUF-DF0001	Climb Device Eccentric Cam(Arm)	25	F-60	DPK-CB0008	Arm Back Part Rubber Cap(Small)	7	A-57	DSC-BF0012	Screw(11/64"n=40)	7	A-6
CUF-DF0004	Climb Device Eccentric Cam(Top Cover)	25	F-58	DPK-CB0008	Arm Upper Part Rubber Cap(Small)	7	A-59	DSC-BF0012	Screw(11/64"n=40)	7	A-39
CUF-KC0004	Climb Device Adjusting Shaft	23	F-1	DPK-CB0009	Rubber Cap	9	A-69	DSC-BF0018	Screw(1/8"n=44)	17	D-80
CUF-KC0005	Upper Feed Level Level Driving Shaft	23	F-51	DPK-CB0019	Reverse Button Cable Bushing	29	H-11	DSC-BF0019	Screw(3/16"n=28)	15	D-4
CUF-KC0006	Upper Feed Pressure Adjusting Spring Bar	25	F-88	DPK-CB0026	Arm Back Part Rubber Cap(Large)	7	A-55	DSC-BF0029	Screw(15/64"n=28)	15	D-54
CUF-KG0001	Connecting Shaft for F-14	23	F-16	DPK-CZ0002	Rubber Cap For A-60	9	A-61	DSC-BF0029	Screw(15/64"n=28)	23	F-48
CUF-KG0002	Upper Feed Lever Rock Crank Shaft	23	F-35	DPL-AA0008	Pulley	11	B-23	DSC-BF0031	Screw(11/64"n=40)	7	A-29
CUF-KZ00010	Upper Feed Level Adjusting Shaft	25	F-67	DPL-AA0009	Pulley	11	B-24	DSC-BF0031	Screw(11/64"n=40)	13	C-32
CUF-KZ0004	Upper Feed Driving Shaft	23	F-23	DPN-AA0086	Pin For D-3	15	D-5	DSC-BF0031	Screw(11/64"n=40)	15	D-20
CUR-CA0004	Upright Shaft	13	C-1	DPN-AA0112	Tension Release Pin	9	A-62	DSC-BF0031	Screw(11/64"n=40)	17	D-98
CUS-BH0001	Spring for B-2	11	B-4	DPN-AA0115	Slide Block Shaft	15	D-40	DSC-BF0031	Screw(11/64"n=40)	25	F-84
CUS-BJ0002	Protection Plate for B-8	11	B-30	DPN-AA0116	Pin For D-24	15	D-25	DSC-BF0036	Screw(11/64"n=40)	7	A-38
CUS-CH0001	Oil Adjusting Pin For B-1	11	B-2	DPN-AA0116	Pin For D-28	15	D-29	DSC-BF0036	Screw(11/64"n=40)	15	D-14
CUS-DA0019	Link Cam	11	B-8	DPN-AA0117	Upper Feed Lever Connecting Pin	23	F-37	DSC-BF0036	Screw(11/64"n=40)	15	D-38
CUS-DB0003	Balance Cam	11	B-13	DPN-AA0118	Pin for F-40	23	F-42	DSC-BF0036	Screw(11/64"n=40)	17	D-74
CUS-KC0018	Upper Shaft	11	B-1	DPN-AA0119	Pin for F-57, F-59	25	F-62	DSC-BF0036	Screw(11/64"n=40)	19	E-6
DBS-DA0037	Upright Shaft Upper Bushing	13	C-4	DPN-AA0120	Upper Feed Connecting Link Pin	23	F-32	DSC-BF0036	Screw(11/64"n=40)	27	G-25
DBS-DA0038	Upright Shaft Lower Bushing	13	C-6	DPN-AA0125	Pin For D-47	15	D-48	DSC-BF0037	Screw(9/32"n=28)	11	B-9
DBS-DA0040	Lower Shaft Middle Bushing	13	C-17	DPN-AA0126	Connecting Pin For D-41	15	D-42	DSC-BF00400	Screw(3/16"n=32)	13	C-21
DBS-DA0179	Level Feed Shaft Bushing	17	D-65	DPN-AA0127	Connecting Pin for F-11	23	F-12	DSC-BF0061	Screw(M8×1.25)	33	J-27
DBS-DA0185	Bushing (R) for D-64, D-89	17	D-92	DPN-AA0129	Stopper Pin for G-20	27	G-42	DSC-BF0063	Screw(11/64"n=40)	19	E-53
DBS-DA0185	Upper Feed Level Level Driving Shaft Front Bushing	23	F-52	DPN-AA0136	Reverse Shaft For D-32	15	D-41	DSC-BF0070	Cap Screw for Lower Shaft Oil Felt	13	C-13
DBS-DA0191	Upper Shaft Middle Bushing	11	B-15	DPN-AD0080	Connecting Pin for D-55	15	D-56	DSC-BF0074	Piston Spring Pin Screw	31	I-7-8
DBS-DA0192	Needle Bar Upper Bushing	11	B-32	DPN-AD0083	Pin For D-50	15	D-51	DSC-BF0138	Screw(9/32"n=28)	25	F-85
DBS-DA0193	Needle Bar Lower Bushing	11	B-33	DPN-BA0008	Holder for G-39	27	G-41	DSC-BG0002	Screw(5/16"n=24)	11	B-26
DBS-DA0194	Lower Shaft Rear Bushing	13	C-15	DPN-BC0035	Hinge Shaft for F-72	25	F-73	DSC-BJ0002	Screw	27	G-52
DBS-DA0199	Feed Regulator Shaft Bushing	15	D-33	DPN-BC0036	Solenoid Pin	19	E-52	DSC-BJ0002	Screw(11/64"n=40)	7	A-8
DBS-DA0200	Thread Trimming Shaft Bushing	19	E-19	DSC-AA0003	Screw (15/64"n=28)	33	J-32	DSC-BJ0002	Screw(11/64"n=40)	9	A-65
DBS-DA0201	Upper Feed Driving Shaft Front Bushing	23	F-24	DSC-AA0029	Screw(15/64"n=28)	25	F-66	DSC-BJ0003	Screw(9/64"n=40)	31	I-8
DBS-DA0202	Upper Feed Driving Shaft Rear Bushing	23	F-25	DSC-AA0030	Screw(3/16"n=32)	15	D-57	DSC-BJ0004	Screw(11/64"n=40)	25	F-82
DBS-DA0203	Climb Device Adjusting Shaft Bushing(Rear)	23	F-3	DSC-AA0030	Screw(3/16"n=32)	15	D-59	DSC-BJ0005	Screw(15/64"n=28)	19	E-28
DBS-DA0204	Presser Bar Bushing	27	G-2	DSC-AA0030	Screw(3/16"n=32)	19	E-35	DSC-BJ0006	Screw(15/64"n=28)	21	E-59
DBS-DA0205	Upper Feed Level Level Driving Shaft Rear Bushing	23	F-54	DSC-AA0030	Screw(M5×P0.8)	19	E-48	DSC-BJ0006	Screw(15/64"n=28)	23	F-21
DBS-DA0209	Feed Lifting Shaft Bushing	17	D-83	DSC-BA0001	Screw(9/64"n=40)	7	A-16	DSC-BJ0014	Screw	27	G-47
DBS-DA0225	Climb Device Adjusting Shaft Bushing(Front)	23	F-2	DSC-BA0001	Screw(9/64"n=40)	7	A-18	DSC-BJ0014	Screw(9/64"n=40)	25	F-79
DBS-DB0011	Upper Shaft Rear Bushing	11	B-21	DSC-BA0001	Screw(9/64"n=40)	7	A-20	DSC-BJ0016	Screw	9	A-67
DBS-DB0054	Upper Shaft Front Bushing	11	B-12	DSC-BA0003	Screw (11/64"n=40)	33	J-21	DSC-BJ0024	Screw(3/16"n=32)	17	D-63
DBS-DB0055	Lower Shaft Front Bushing	13	C-19	DSC-BA0004	Screw(3/16"n=28)	15	D-19	DSC-BJ0051	Screw(3/16"n=28)	17	D-71
DBS-DB0059	Guide Bush for Return Spring	19	E-21	DSC-BA0007	Screw(3/16"n=32)	29	H-2	DSC-BJ0051	Screw(3/16"n=28)	23	F-15

Index

Parts No.	Name of Parts	Page	Ref.No.	Parts No.	Name of Parts	Page	Ref.No.	Parts No.	Name of Parts	Page	Ref.No.
DSC-BJ0052	Set Screw for F-72	25	F-74	DSC-FA0168	Hinge Screw for F-90	25	F-91	DWS-CB0002	Washer for Reverse Feed Lever Shaft	15	D-61
DSC-BJ0055	Screw	29	H-4	DSC-FA0169	Hinge Screw for Presser Bar Connecting Stick	27	G-36	GP-009181	Model Mark(KM-640BL-7)	7	A-24
DSC-CA0001	Screw(15/64"n=28)	13	C-20	DSC-FG0014	Stud Screw for E-38	19	E-43	GP-018166	Bobbin Winder Ass'y	33	J-40
DSC-CA0001	Screw(15/64"n=28)	15	D-34	DSC-GA0004	Stud Screw for E-24	19	E-25	GP-018205	CE-Mark	9	A-68
DSC-CA0001	Screw(15/64"n=28)	23	F-26	DSC-GA0010	Hinge Screw for Upper Feed Level Driving Shaft(Crank/Rear)	23	F-49	GP-031656	Level Feed Shaft	17	D-64
DSC-CA0003	Screw(3/16"n=28)	19	E-20	DSC-HA0004	Pressure Adjusting Screw	27	G-3	GP-033338	Model Mark(KM-640UBL)	9	A-71
DSC-CA0004	Screw(11/64"n=40)	19	E-54	DSC-HA0006	Sub Pressure Adjusting Screw	27	G-5	GP-033339	Model Mark(KM-640UBL-7)	9	A-70
DSC-CA0004	Screw(11/64"n=40)	27	G-29	DSC-HB0022	Belt Cover "A", "C"Connecting Screw	33	J-19	MTH-UL0002	Thread Take-Up Lever Assembly	11	B-27
DSC-CA0004	Screw(11/64"n=40)	31	I-7-14	DSC-HD0012	Holder for F-7	23	F-8	PN-000577	Connecting Pin for F-20	23	F-22
DSC-CA0005	Screw(1/4"n=40)	11	B-18	DSC-HD0013	Connecting Screw for G-39	27	G-40	PPK-AA0001	Oil Seal for B-21	11	B-22
DSC-CA0005	Screw(1/4"n=40)	11	B-28	DSC-HZ0011	Connecting Bolt for G-44	27	G-48	PPK-BA0004	O-Ring For B-2	11	B-3
DSC-CA0005	Screw(1/4"n=40)	13	C-3	DSN-AA0001	Nut For A-11	7	A-12	PPK-BA0004	O-Ring for B-9	11	B-10
DSC-CA0005	Screw(1/4"n=40)	13	C-9	DSN-AA0001	Nut For A-9	7	A-10	PPK-BA0004	O-Ring for G-16	27	G-17
DSC-CA0005	Screw(1/4"n=40)	13	C-14	DSN-AA0004	Nut(15/64"n=28)	19	E-42	PPK-BA0007	O-Ring For D-15	15	D-16
DSC-CA0005	Screw(1/4"n=40)	15	D-36	DSN-AA0004	Nut(15/64"n=28)	19	E-44	PPK-BA0009	O-Ring for F-51	23	F-56
DSC-CA0005	Screw(1/4"n=40)	15	D-45	DSN-AA0005	Nut(1/4"n=40)	25	F-69	PPK-BA0016	O-Ring For D-1	15	D-2
DSC-CA0005	Screw(1/4"n=40)	17	D-68	DSN-AA0006	Nut for E-14	19	E-15	PPK-BB0001	O-Ring for I-1	31	I-2
DSC-CA0005	Screw(1/4"n=40)	23	F-6	DSN-AA0006	Nut(3/16"n=32)	19	E-26	PPN-AF0009	Piston Spring Pin	31	I-7-7
DSC-CA0005	Screw(1/4"n=40)	23	F-10	DSN-AA0006	Nut(3/16"n=32)	19	E-46	PSC-AC0007	Screw for G-53	27	G-54
DSC-CA0005	Screw(1/4"n=40)	27	G-21	DSN-AA0007	Nut(15/64"n=28)	23	F-39	PSC-CB0002	Screw	17	D-99
DSC-CA0008	Screw(15/64"n=28)	11	B-29	DSN-AA0008	Nut(3/16"n=28)	33	J-31	PSC-DD0001	Set Screw for J-16	33	J-17
DSC-CA0008	Screw(15/64"n=28)	13	C-5	DSN-AA0017	Nut(1/8"n=40)	19	E-4	PSN-AA0002	Nut(M5×P0.8)	19	E-55
DSC-CA0008	Screw(15/64"n=28)	13	C-7	DSN-AA0022	Nut(9/32"n=28)	23	F-50	PSN-AA0017	Nut B for G-44	27	G-50
DSC-CA0008	Screw(15/64"n=28)	13	C-16	DSN-AA0022	Nut(9/32"n=28)	25	F-86	PSR-AA0001	C-Ring for D-89	17	D-88
DSC-CA0008	Screw(15/64"n=28)	15	D-43	DSN-AA0024	Nut A for G-44	27	G-49	PSR-AA0002	C-Ring for D-64	17	D-69
DSC-CA0008	Screw(15/64"n=28)	17	D-66	DSN-CC0005	Nut for Pressure Adjusting Screw	27	G-4	PSR-AC0001	E-Ring for J-34	33	J-34-5
DSC-CA0008	Screw(15/64"n=28)	17	D-84	DSP-AA0016	Spring for C-23	13	C-22	PSR-AC0001	E-Ring(Ø9)	29	H-6
DSC-CA0008	Screw(15/64"n=28)	17	D-94	DSP-AA0027	Piston Spring	31	I-7-6	PSR-AC0003	E-Ring For D-29	15	D-30
DSC-CA0011	Screw(1/4"n=40)	11	B-14	DSP-AA0028	Spring For D-5	15	D-6	PSR-AC0003	E-Ring for F-67	25	F-71
DSC-CA0016	Screw(11/64"n=40)	7	A-14	DSP-AA0085	Slide Arm Return Spring	19	E-22	PSR-AC0003	E-Ring for G-16	27	G-18
DSC-CA0016	Screw(11/64"n=40)	23	F-4	DSP-AA0086	Spring for F-62	25	F-63	PSR-AC0003	E-Ring for G-27	27	G-28
DSC-CA0016	Screw(11/64"n=40)	31	I-14	DSP-AA0087	Upper Feed Pressure Adjusting Spring	25	F-87	PSR-AC0005	E-Ring for F-32	23	F-33
DSC-CA0017	Screw	33	J-34-3	DSP-AA0088	Pressure Adjusting Spring	27	G-6	PSR-AC0006	E-Ring for G-24-1(Ø8)	27	G-30
DSC-CA0017	Screw(15/64"n=28)	11	B-16	DSP-AA0089	Sub Pressure Adjusting Spring	27	G-7	PSR-AC0009	E-Ring For D-8	15	D-11
DSC-CA0017	Screw(15/64"n=28)	17	D-95	DSP-AB0035	Return Spring For D-17, D-18	15	D-21	PTC-AG0001	Nylon Clib	31	I-15
DSC-CA0017	Screw(15/64"n=28)	23	F-53	DSP-AB0042	Spring For D-7, D-8	15	D-12	PTL-AB0001	L-Wrench(2mm)	33	J-23
DSC-CA0017	Screw(15/64"n=28)	23	F-55	DSP-AB0043	Spring for G-37	27	G-39	PTL-AB0002	L-Wrench(5mm)	33	J-46
DSC-CA0019	Screw(1/4"n=40)	17	D-86	DSP-AC0023	Oil Pump Connecting Spring	31	I-12	PTL-AB0003	L-Wrench(2.5mm)	33	J-24
DSC-CA0035	Screw(15/64"n=28)	9	A-63	DSP-AC0053	Return Spring	19	E-29	PTL-BA0001	Driver(Large)	33	J-2
DSC-CA0035	Screw(15/64"n=28)	27	G-11	DSP-AC0054	Return Spring for F-1	23	F-7	PTL-BA0002	Driver(Middle, Small)	33	J-3
DSC-CA0035	Screw(15/64"n=28)	33	J-50	DSP-AC0055	Spring for H-7	29	H-9	PWS-CA0002	Oil Pump Body Washer	31	I-9
DSC-CA0037	Screw(9/32"n=28)	11	B-11	DSP-AC0056	Control Body Spring	33	J-33	RI-000045	S-Ring	17	D-100
DSC-CA0038	Screw(3/16"n=28)	33	J-30	DSP-AC0057	Torsion Spring for G-14	27	G-19	RI-000045	C-Ring for F-16	23	F-17
DSC-CB0003	Screw(11/64"n=40)	13	C-24	DSP-AC0058	Spring for G-26	27	G-31	-	Oil Wick	17	D-93
DSC-CB0004	Screw(1/4"n=40)	19	E-39	DSP-AD0010	Slide Plate Spring	7	A-43				
DSC-CB0005	Screw(15/64"n=28)	15	D-10	DSR-AA0001	C-Ring For D-44	15	D-46				
DSC-CB0005	Screw(15/64"n=28)	19	E-31	DTC-AH0001	Cable Holder	9	A-64				
DSC-CB0005	Screw(15/64"n=28)	25	F-75	DTC-AK0003	Magnetic	33	J-39				
DSC-CB0007	Screw(M5)	23	F-19	DWS-AA0004	Washer for G-32	27	G-33				
DSC-CB0007	Screw(M5)	27	G-15	DWS-AA0006	Washer	19	E-36				
DSC-CB0023	Screw(1/4"n=40)	19	E-33	DWS-AA0006	Washer for E-48	19	E-50				
DSC-CC0001	Screw(M6×1.0)	33	J-37	DWS-AA0011	Washer for G-53	27	G-55				
DSC-FA0062	Stud Screw for D-91	17	D-90	DWS-AA0015	Washer For D-72	17	D-73				
DSC-FA0133	Hinge Screw for G-37	27	G-38	DWS-AA0038	Washer for B-6	11	B-5				
DSC-FA0162	Stud Screw for E-47	19	E-45	DWS-AA0038	Washer for E-5	19	E-7				
DSC-FA0163	Stud Screw for E-38	19	E-41	DWS-AA0095	E-Ring for G-32(Ø5)	27	G-34				
DSC-FA0164	Stud Screw for E-13	19	E-14	DWS-AA0144	Washer	29	H-14				
DSC-FA0165	Screw(11/64"n=40)	25	F-61	DWS-AA0144	Washer for E-52	21	E-58				
DSC-FA0166	Hinge Screw for F-40	23	F-41	DWS-AA0144	Washer for F-67	25	F-68				
DSC-FA0166	Hinge Screw for F-76	25	F-77	DWS-AA0151	Washer for D-89	17	D-87				
DSC-FA0166	Hinge Screw for Upper Feed Driving Rod	23	F-30	DWS-CA0001	Spring Washer for E-48	19	E-49				
DSC-FA0167	Upper Feed Lever Driving Link Hinge Screw	23	F-38	DWS-CA0001	Washer for C-34	13	C-33				

