

# 金輪牌工業用縫紉機

No. 6102H01

**GOLDEN WHEEL INDUSTRIAL SEWING MACHINE**

1-Needle, Top & Bottom Feed Lockstitch Machine  
With Large-Capacity Hook

CS-6102

## 零件分解圖

**PARTS BOOK**

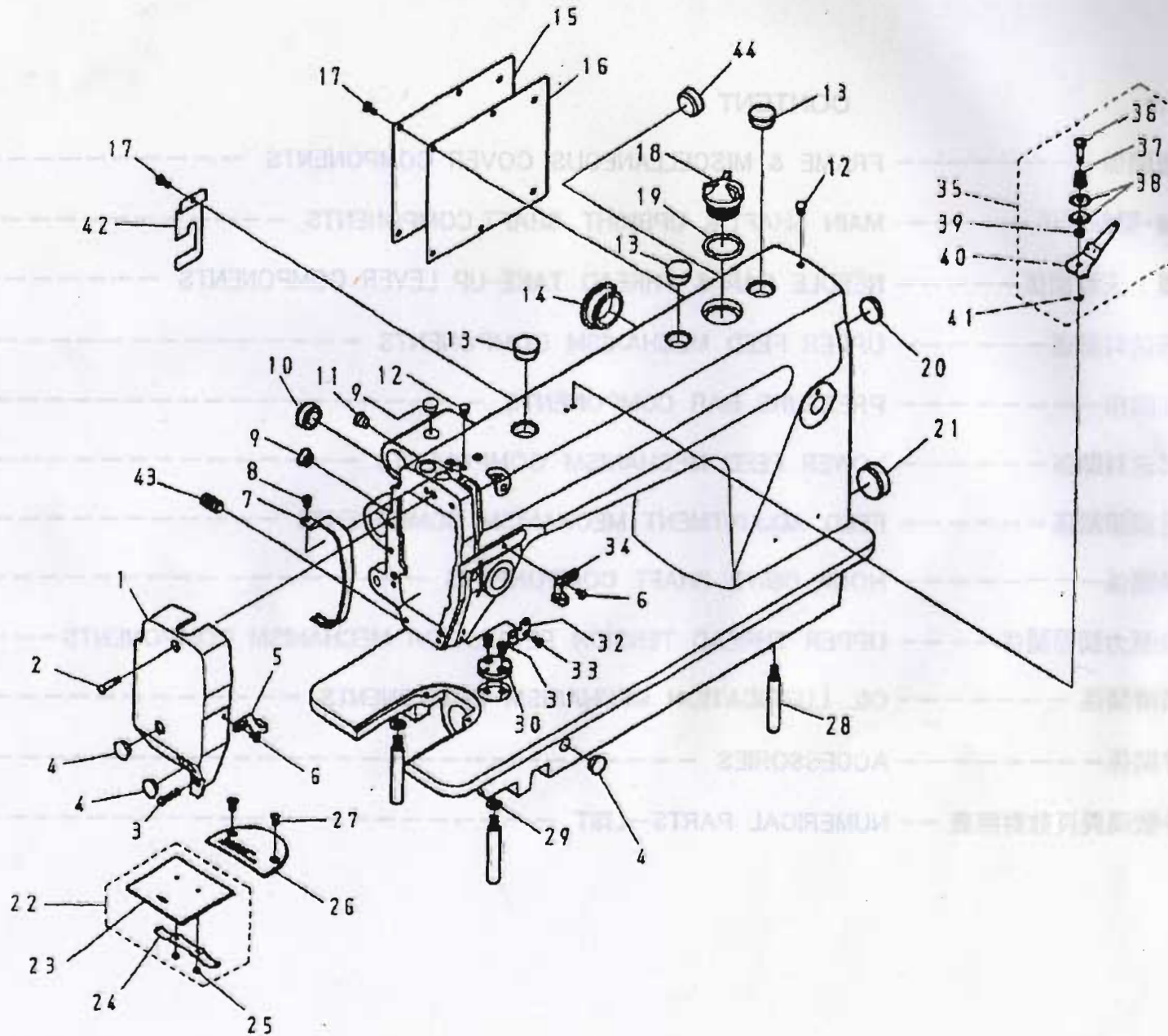
啓翔股份有限公司

CHEE SIANG INDUSTRIAL CO.,LTD.

目次	CONTENT	PAGE
A. 本體關係	FRAME & MISCELLANEOUS COVER COMPONENTS	2-3
B. 上軸·豎軸關係	MAIN SHAFT & UPRIGHT SHAFT COMPONENTS	4-5
C. 針棒·天秤關係	NEEDLE BAR & THREAD TAKE-UP LEVER COMPONENTS	6-7
D. 上部送料關係	UPPER FEED MECHANISM COMPONENTS	8-11
E. 押腳關係	PRESSURE BAR COMPONENTS	12-13
F. 下部送料關係	LOWER FEED MECHANISM COMPONENTS	14-15
G. 縫目調節關係	FEED ADJUSTMENT MECHANISM COMPONENTS	16-17
H. 下軸關係	HOOK DRIVE SHAFT COMPONENTS	18-19
I. 縫線壓力調節關係	UPPER THREAD TENSION REGULATOR MECHANISM COMPONENTS	20-21
J. 油潤滑關係	OIL LUBRICATION MECHANISM COMPONENTS	22-23
K. 附件關係	ACCESSORIES	24-27
L. 零件號碼與頁數對照表	NUMERICAL PARTS-LIST	28-30

A. CS-6102 本體關係

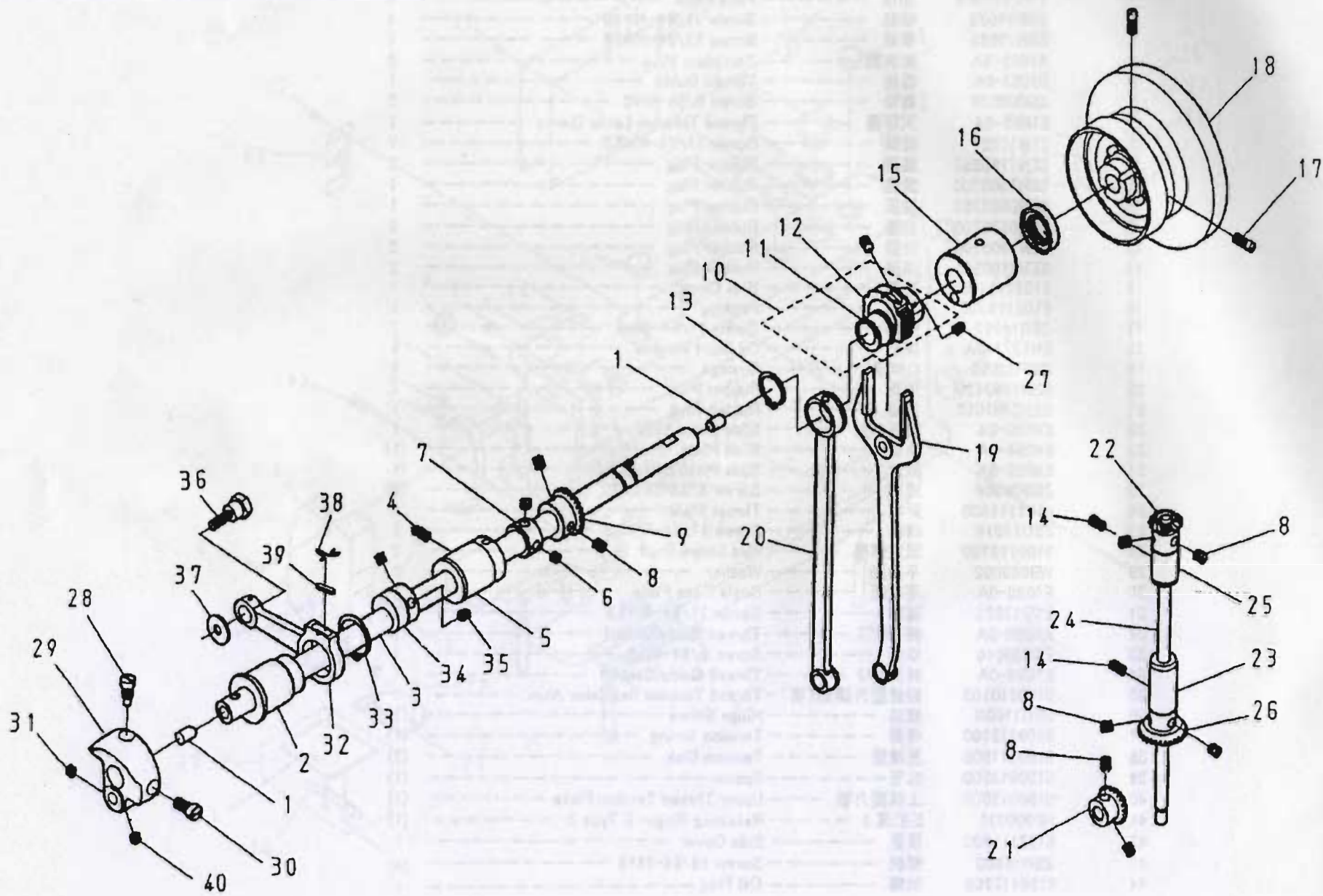
FRAME & MISCELLANEOUS COVER COMPONENTS



A. CS-6102 本體關係 FRAME & MISCELLANEOUS COVER COMPONENTS

REF.No	NOTE	零件號碼 Part No.	零件名稱	Name of Part	件數 6102	QTY	備註 Remarks
1		6102111000	面板	Face Plate	1		
2		ZSB11023	螺絲	Screw 11/64-40*20	1		
3		ZSB11083	螺絲	Screw 11/64-40*18	1		
4		A1013-1A	面板塞	Faceplate Plug	2		
5		E1053-0A	線掛	Thread Guide	1		
6		ZSB09016	螺絲	Screw 9/64-40*6	2		
7		E1063-0A	天秤蓋	Thread Take-up Lever Cover	1		
8		ZSB11021	螺絲	Screw 11/64-40*5.5	1		
9		SEN1180550	油蓋	Rubber Plug	2		
10		SEN1900700	油蓋	Rubber Plug	1		
11		SEN0880750	油蓋	Rubber Plug	1		
12		SEN0570700	油蓋	Rubber Plug	2		
13		SEN1900700	油蓋	Rubber Plug	3		
14		SEN3100900	油蓋	Rubber Plug	2		
15		6102111100	橫蓋	Side Cover	1		
16		6102114300	油封	Packing	1		
17		ZSB11012	螺絲	Screw 11/64-40*8	7		
18		EH1371-0A-A	油窓	Oil Sight Window	1		
19		OPP02550	O形環	O-rings	1		
20		SEN1960420	油蓋	Rubber Plug	1		
21		SEN2701050	油蓋	Rubber Plug	1		
22		E4080-0A	角板(套)	Slide Plate Asm.	1		
23		E4084-0A	角板	Slide Plate	(1)		
24		E4085-0A	簧片	Slide Plate Spring	(1)		
25		ZSB06004	螺絲	Screw 3/32-56 L*2.2	(2)		
26		6102111300	針板	Throat Plate	1		
27		ZSC11016	螺絲	Screw 11/64-40*8.3	2		
28		5150110700	固定螺絲	Bed Screw Stud	3		
29		WB060002	平墊圈	Washer	2		
30		E4086-0A	導板座	Scale Base Plate	1		
31		ZSB11021	螺絲	Screw 11/64-40*5.5	2		
32		A1055-0A	線掛(下)	Thread Guide(Lower)	1		
33		ZSB09016	螺絲	Screw 9/64-40*6	1		
34		E1052-0A	線掛(中)	Thread Guide(Center)	1		
35		5150310105	縫線壓力調節(套)	Thread Tension Regulator Asm.	1		
36		ZSG11030	螺絲	Hinge Screw	(1)		
37		5150313100	彈簧	Tension Spring	(1)		
38		5150311900	壓線盤	Tension Disk	(2)		
39		5150313200	套管	Spacer	(1)		
40		5150313000	上線壓力板	Upper Thread Tension Plate	(1)		
41		RE000030	E扣環 3	Retaining Rings- E Type 3	(1)		
42		6102111200	橫蓋	Side Cover	1		
43		ZSH15002	螺絲	Screw 15/64-28*8	1		
44		6120117200	油塞	Oil Plug	1		

B. CS-6102 上軸・整軸関係 MAIN SHAFT & UPRIGHT SHAFT COMPONENTS



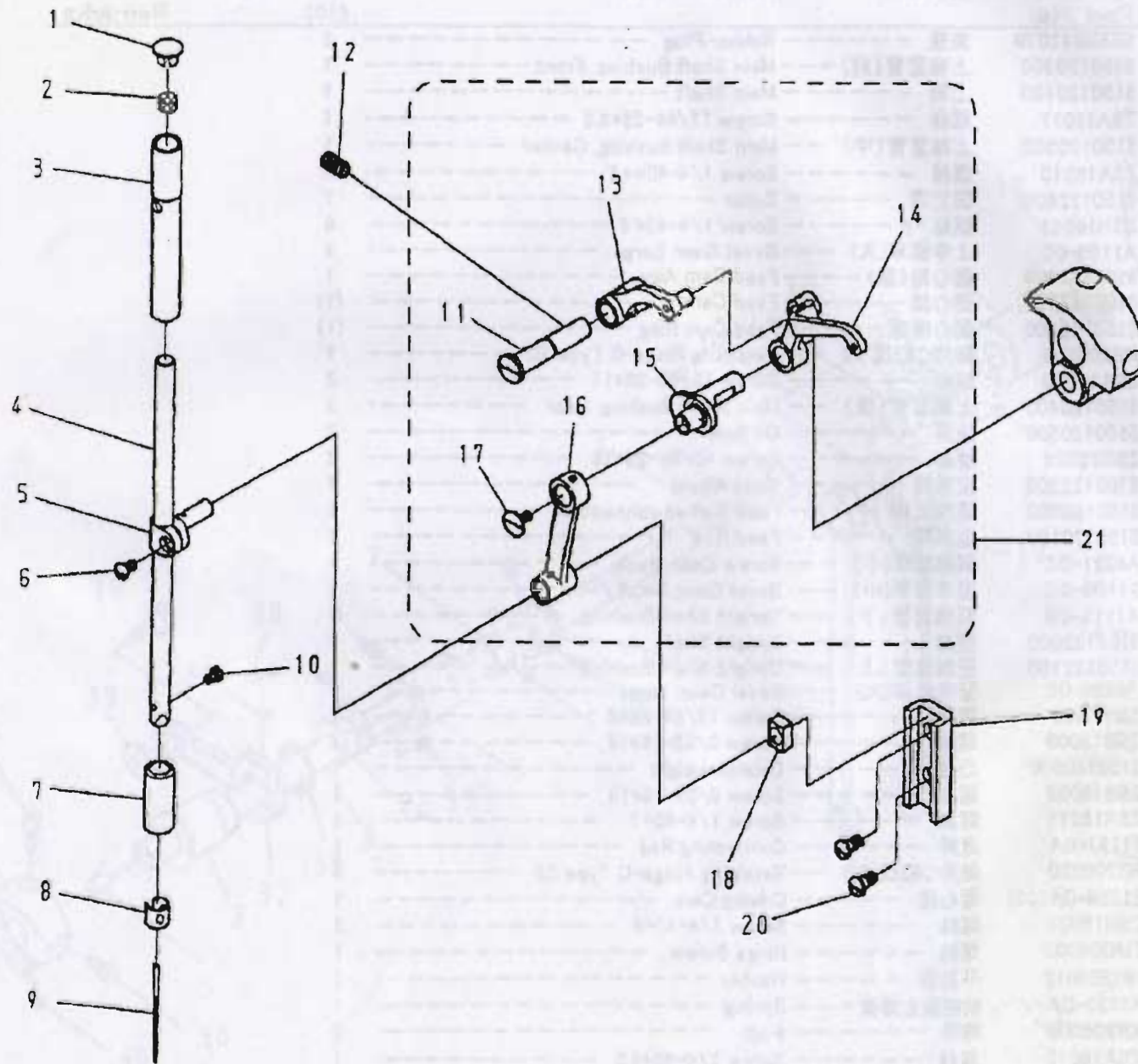
B. CS-6102 上軸·豎軸關係 MAIN SHAFT & UPRIGHT SHAFT COMPONENTS

REF.No	NOTE	零件號碼 Part No.	零件名稱	Name of Part	件數 6102	QTY	備註 Remarks
1		SEN0741070	油蓋	Rubber Plug	2		
2		5150120200	上軸套管(前)	Main Shaft Bushing, Front	1		
3		5150120100	上軸	Main Shaft	1		
4		ZSA15017	螺絲	Screw 15/64-28*8.5	1		
5		515012030Z	上軸套管(中)	Main Shaft Bushing, Center	1		
6		ZSA18010	螺絲	Screw 1/4-40*4.5	2		
7		5150122600	固定環	Collar	1		
8		ZSH16001	螺絲	Screw 1/4-40*6	8		
9		A1108-0C	上傘齒車(大)	Bevel Gear, Large	1		
10		6102122005	偏心輪(套)	Feed Cam Asm.	1		
11		6102122000	偏心輪	Feed Cam	(1)		
12		5150122200	偏心輪環	Feed Cam Ring	(1)		
13		RB200200	軸用C扣環 20	Retaining Rings-C Type 20	1		
14		ZSA15020	螺絲	Screw 15/64-28*11	2		
15		5150120400	上軸套管(後)	Main Shaft Bushing, Rear	1		
16		5150120500	油蓋	Oil Seal	1		
17		ZSB15026	螺絲	Screw 15/64-28*18	2		
18		6102122300	皮帶輪	Hand Wheel	1		
19		5150160900	連接叉桿	Feed Forked connection	1		
20		5150170100	送料桿	Feed Rod	1		
21		A4021-0C	斜齒輪車(小)	Screw Gear, Back	1		
22		A1109-0C	豎傘齒車(小)	Bevel Gear, Small	1		
23		A1113-0B	豎軸套管(下)	Upright Shaft Bushing	1		
24		6102132000	豎軸	Upright Shaft	1		
25		5150132100	豎軸套管(上)	Upright Shaft Bushing	1		
26		A4020-0C	豎傘齒車(大)	Bevel Gear, Large	1		
27		ZSH15002	螺絲	Screw 15/64-28*8	2		
28		ZSB18009	螺絲	Screw 9/32-28*14	1		
29		5150120800	凸輪	Counterweight	1		
30		ZSB18002	螺絲	Screw 9/32-28*13	1		
31		ZSA18011	螺絲	Screw 1/4-40*7	1		
32		E1297-0A	連桿	Connecting Rod	1		
33		RB200250	軸用C扣環 25	Retaining Rings-C Type 25	1		
34		E1298-0A(03)	偏心輪	Driving Cam	1		
35		ZSH16001	螺絲	Screw 1/4-40*6	2		
36		ZMG08003	螺絲	Hinge Screw	1		
37		WH208012	平墊圈	Washer	1		
38		AT130-0A	油棉固定彈簧	Spring	1		
39		XB208003	油棉	Felt	1		
40		ZSA18010	螺絲	Screw 1/4-40*4.5	1		

C. CS-6102

針桿・天秤關係

NEEDLE BAR & THREAD TAKE-UP LEVER COMPONENTS



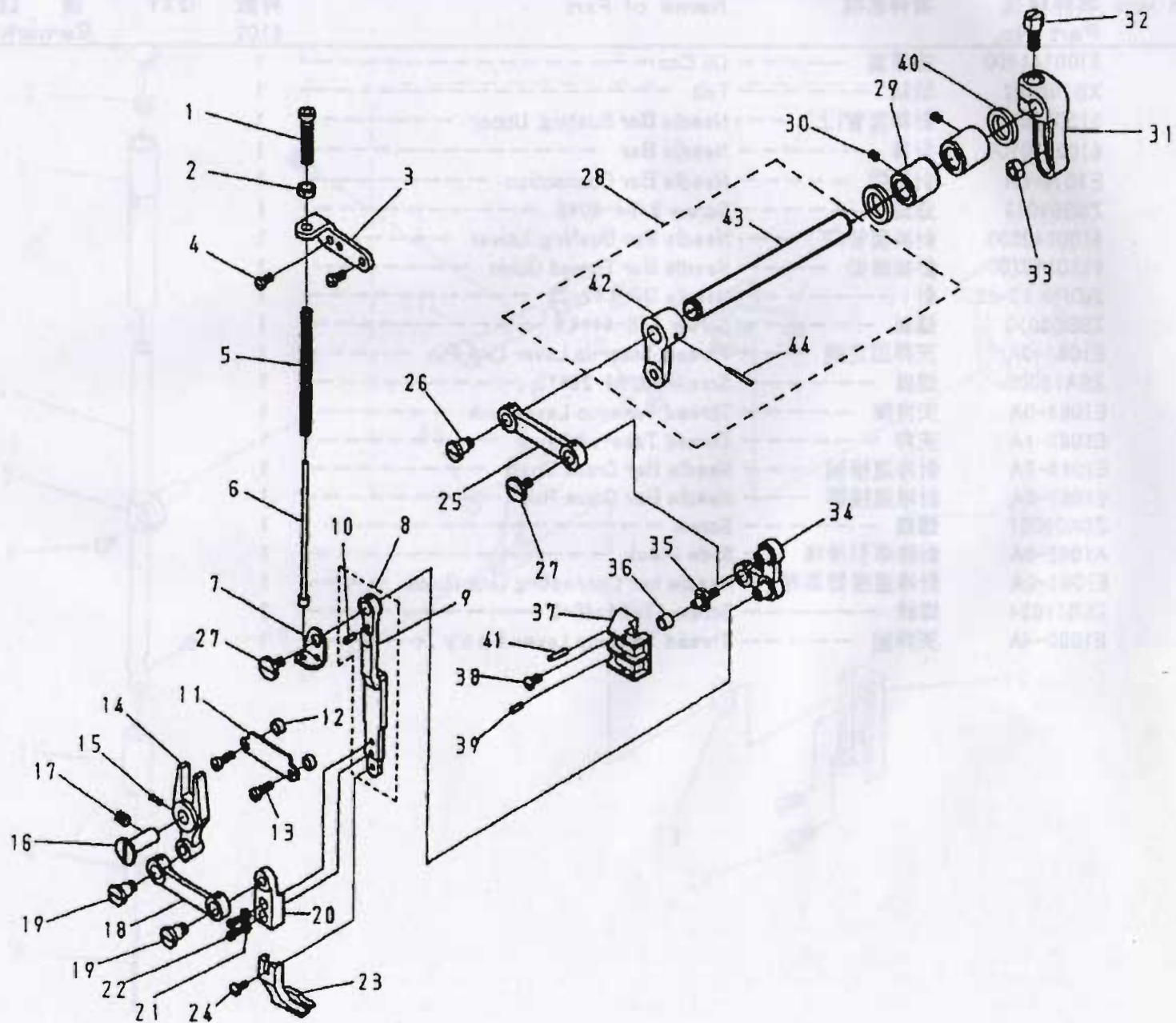
C. CS-6102 針棒:天秤關係 NEEDLE BAR & THREAD TAKE-UP LEVER, COMPONENTS

REF.No	NOTE	零件號碼 Part No.	零件名稱	Name of Part	件數 6102	QTY	備註 Remarks
1		5100141400	橡膠塞	Oil Cap	1		
2		XB108002	油絨	Felt	1		
3		5150140400	針棒套管(上)	Needle Bar Bushing, Upper	1		
4		6102140100	針棒	Needle Bar	1		
5		E1074-0A	針棒鉗	Needle Bar Connection	1		
6		ZSB09019	螺絲	Screw 9/64-40*6	1		
7		6100140500	針棒套管(下)	Needle Bar Bushing, Lower	1		
8		6120140700	針棒線掛	Needle Bar Thread Guide	1		
9		INDP×17-22	針	Needle DP×17-22	1		
10		ZSB08010	螺絲	Screw 1/8-44*4.6	1		
11		E1061-0A	天秤固定銷	Thread Take-up Lever Link Pin	1		
12		ZSA15005	螺絲	Screw 15/64-28*13	1		
13		E1064-0A	天秤架	Thread Take-up Lever Link	1		
14		E1065-1A	天秤	Thread Take-up Lever	1		
15		E1066-2A	針棒連接軸	Needle Bar Crank Shaft	1		
16		E1067-0A	針棒連接桿	Needle Bar Crank Rod	1		
17		ZSK09001	螺絲	Screw	1		
18		A1082-0A	針棒導引滑塊	Slide Block	1		
19		E1081-0A	針棒連接器導槽	Needle bar Connecting Link Guide	1		
20		ZSB11024	螺絲	Screw 11/64-40*8	2		
21		E1060-4A	天秤組	Thread Take-up Lever Ass'y.	1		



D. CS-6102

上部送料關係 (1/2) UPPER FEED MECHANISM COMPONENTS (1/2)

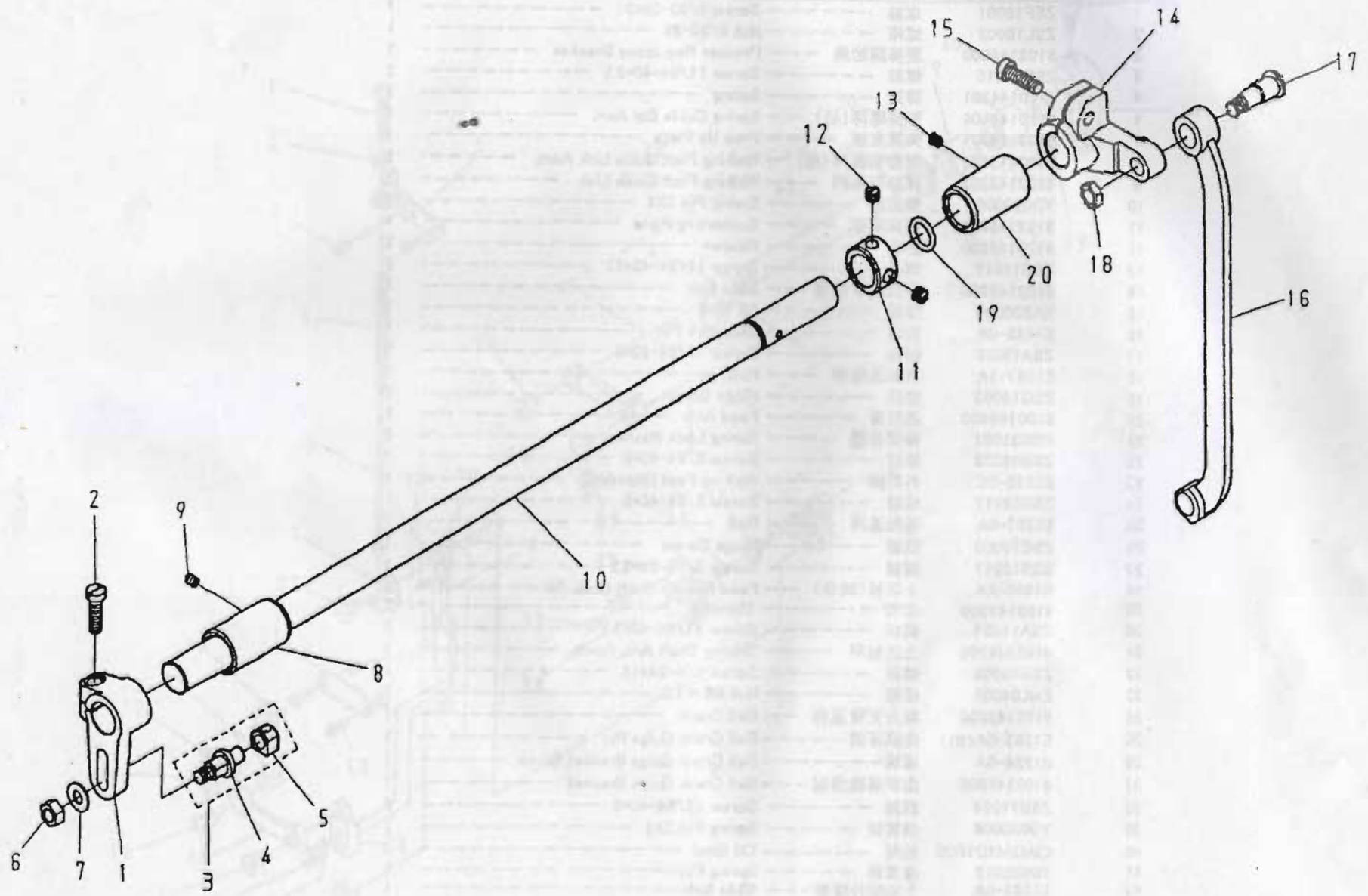


D. CS-6102 上部送料關係 (1/2) UPPER FEED MECHANISM COMPONENTS (1/2)

REF.No	NOTE	零件號碼 Part No.	零件名稱 Name of Part	件數 QTY	備註 Remarks
1		ZSF18001	螺絲 ----- Screw 9/32-28*31 -----	1	
2		ZSL18002	螺帽 ----- Nut 9/32-28 -----	1	
3		6102144000	壓棒調節座 ----- Presser Regulating Bracket -----	1	
4		ZSB11015	螺絲 ----- Screw 11/64-40*8.5 -----	2	
5		6120144201	彈簧 ----- Spring -----	1	
6		6120144106	彈簧導桿(組) --- Spring Guide Bar Asm. -----	1	
7		6103144301	彈簧支板 ----- Prop Up Plate -----	1	
8		6103143205	押脚引導桿(組) --- Walking Foot Guide Link Asm. -----	1	
9		6103143202	押脚引導桿 --- Walking Foot Guide Link -----	(1)	
10		YD030006	彈簧銷 ----- Spring Pin 3X6 -----	(1)	
11		6102148602	押脚導板 ----- Supporting Plate -----	1	
12		6120148500	墊圈 ----- Washer -----	2	
13		ZSB11017	螺絲 ----- Screw 11/64-40*12 -----	2	
14		6103148200	押脚水平擺臂 --- Slide fork -----	1	
15		XA300004	油線 ----- Oil Wick -----	1	
16		E1435-0A	掛銷 ----- Slide fork Pin -----	1	
17		ZSA15025	螺絲 ----- Screw 15/64-28*8 -----	1	
18		E1287-1A	押脚連接桿 --- Rod -----	1	
19		ZSG18002	螺絲 ----- Hinge Screw -----	1	
20		6100148400	送料臂 ----- Feed Arm -----	1	
21		WB031001	彈簧墊圈 ----- Spring Lock Washers -----	2	
22		ZSB09022	螺絲 ----- Screw 9/64-40*8 -----	2	
23		E1235-0C	外押脚 ----- Walking Foot (Standard) -----	1	
24		ZSB09017	螺絲 ----- Screw 9/64-40*8 -----	1	
25		E1287-0A	扭軸連桿 --- Rod -----	1	
26		ZSG16002	螺絲 ----- Hinge Screw -----	1	
27		ZSB12011	螺絲 ----- Screw 3/16-28*6.5 -----	2	
28		E3500-0A	上送軸(結合) --- Feed Rocker Shaft Com. -----	1	
29		6103143500	套管 ----- Thimble -----	2	
30		ZSA11005	螺絲 ----- Screw 11/64-40*5.5 -----	2	
31		6103144700	上送軸柄 --- Driving Shaft Arm, Front -----	1	
32		ZSD16009	螺絲 ----- Screw 1/4-24*16 -----	1	
33		ZML06001	螺帽 ----- Nut M8 x 1.0 -----	1	
34		6103143600	舉升支臂連桿 --- Bell Crank -----	1	
35		E1283-0A(01)	曲柄導銷 --- Bell Crank Guide Pin -----	1	
36		E1284-0A	導塊 --- Bell Crank Guide Bracket Block -----	1	
37		6103145800	曲柄導塊滑架 --- Bell Crank Guide Bracket -----	1	
38		ZSB11024	螺絲 ----- Screw 11/64-40*8 -----	2	
39		YD030006	彈簧銷 ----- Spring Pin 3X6 -----	2	
40		OAGM101805	油封 ----- Oil Seal -----	2	
41		YD030012	彈簧銷 ----- Spring Pin -----	1	
42		E1289-0A	上部舉升擺臂 --- Slide fork -----	1	
43		E1290-0A	上部上下送齒輪 --- Feed Gear -----	1	
44		YB040022	推拔銷 --- Spring Pin -----	1	

D. CS-6102

上部送料機構 (2/2) UPPER FEED MECHANISM COMPONENTS (2/2)



D. CS-6102 上部送料關係 (2/2) UPPER FEED MECHANISM COMPONENTS (2/2)

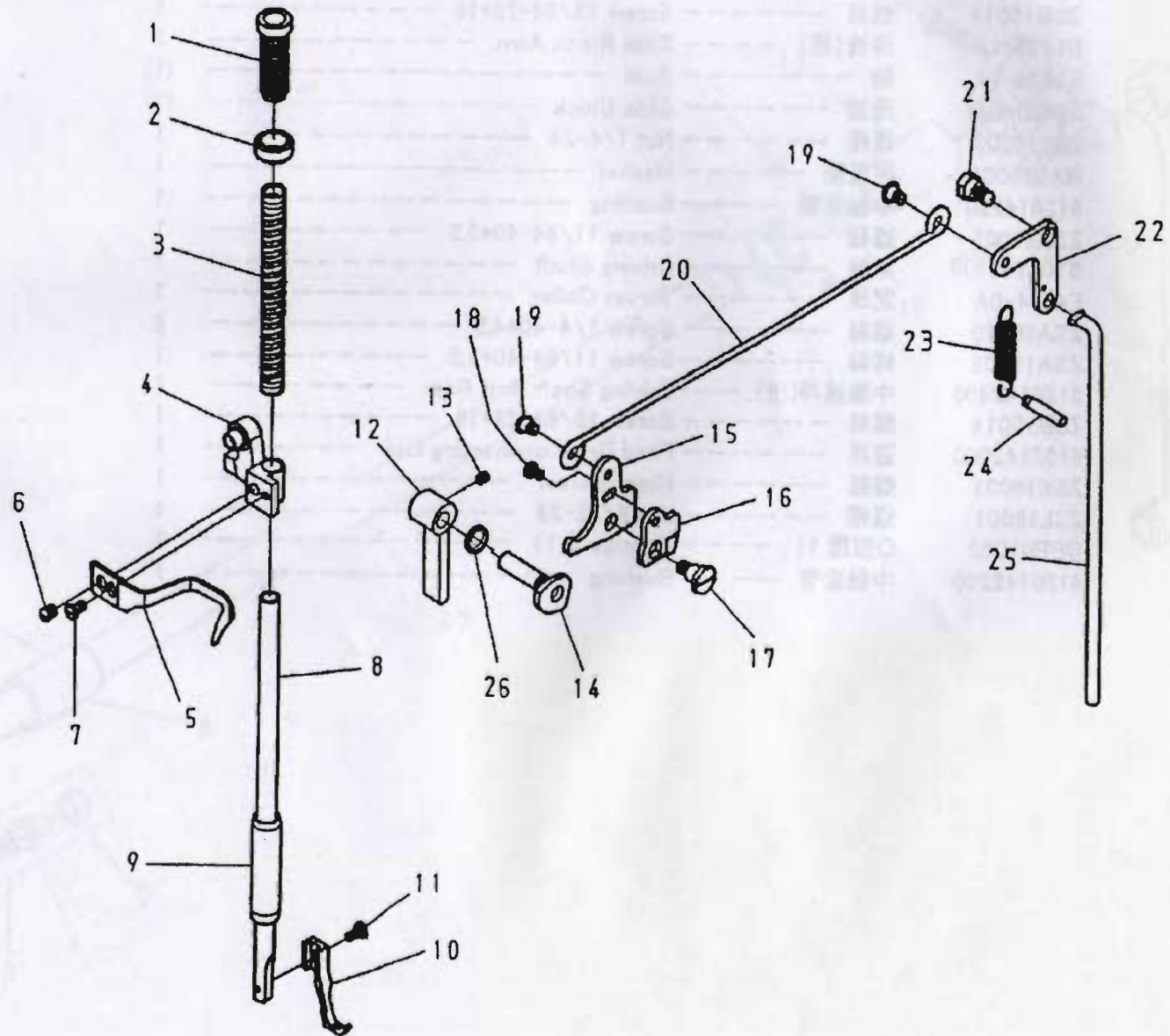
REF.No	NOTE	零件號碼 Part No.	零件名稱 Name of Part	件數 Q'TY	備註 Remarks
1		6120142300	中軸連桿(前) --- Driving Shaft Rod, Front	1	
2		ZSB15014	螺絲 --- Screw 15/64-28*18	1	
3		E1432-1A	滑塊(組) --- Slide Block Asm.	1	
4		E1434-1A	軸 --- Stud	(1)	
5		E1433-0A	滑塊 --- Slide Block	(1)	
6		ZSL16003	螺帽 --- Nut 1/4-24	1	
7		WA069001	平墊圈 --- Washer	1	
8		6120142201	中軸套管 --- Bushing	1	
9		ZSA11005	螺絲 --- Screw 11/64-40*5.5	1	
10		6102142100	中軸 --- Driving Shaft	1	
11		E4044-0A	定環 --- Thrust Collar	1	
12		ZSA16010	螺絲 --- Screw 1/4-40*4.5	2	
13		ZSA11005	螺絲 --- Screw 11/64-40*5.5	1	
14		6120142400	中軸連桿(後) --- Driving Shaft Rod, Rear	1	
15		ZSB15014	螺絲 --- Screw 15/64-28*18	1	
16		6102142000	連桿 --- Feed Drive connecting Link	1	
17		ZSK18031	螺絲 --- Hinge Screw	1	
18		ZSL18001	螺帽 --- Nut 9/32-28	1	
19		OPP01080	O形環 11 --- O-rings $\phi$ 11	1	
20		6120142200	中軸套管 --- Bushing	1	



E. CS-6102

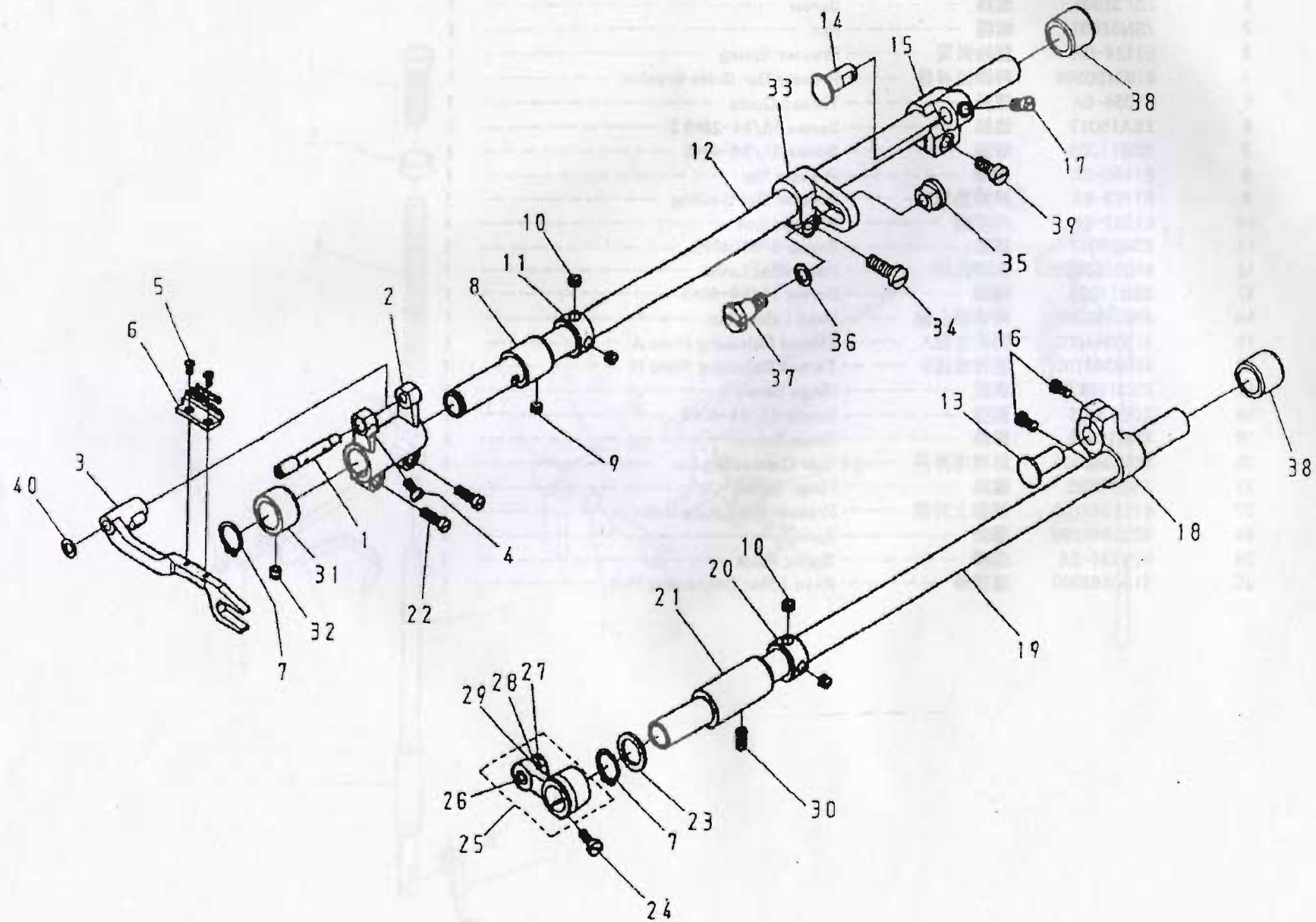
押脚關係

PRESSURE BAR COMPONENTS



## E. CS-6102 押脚關係 PRESSURE BAR COMPONENTS

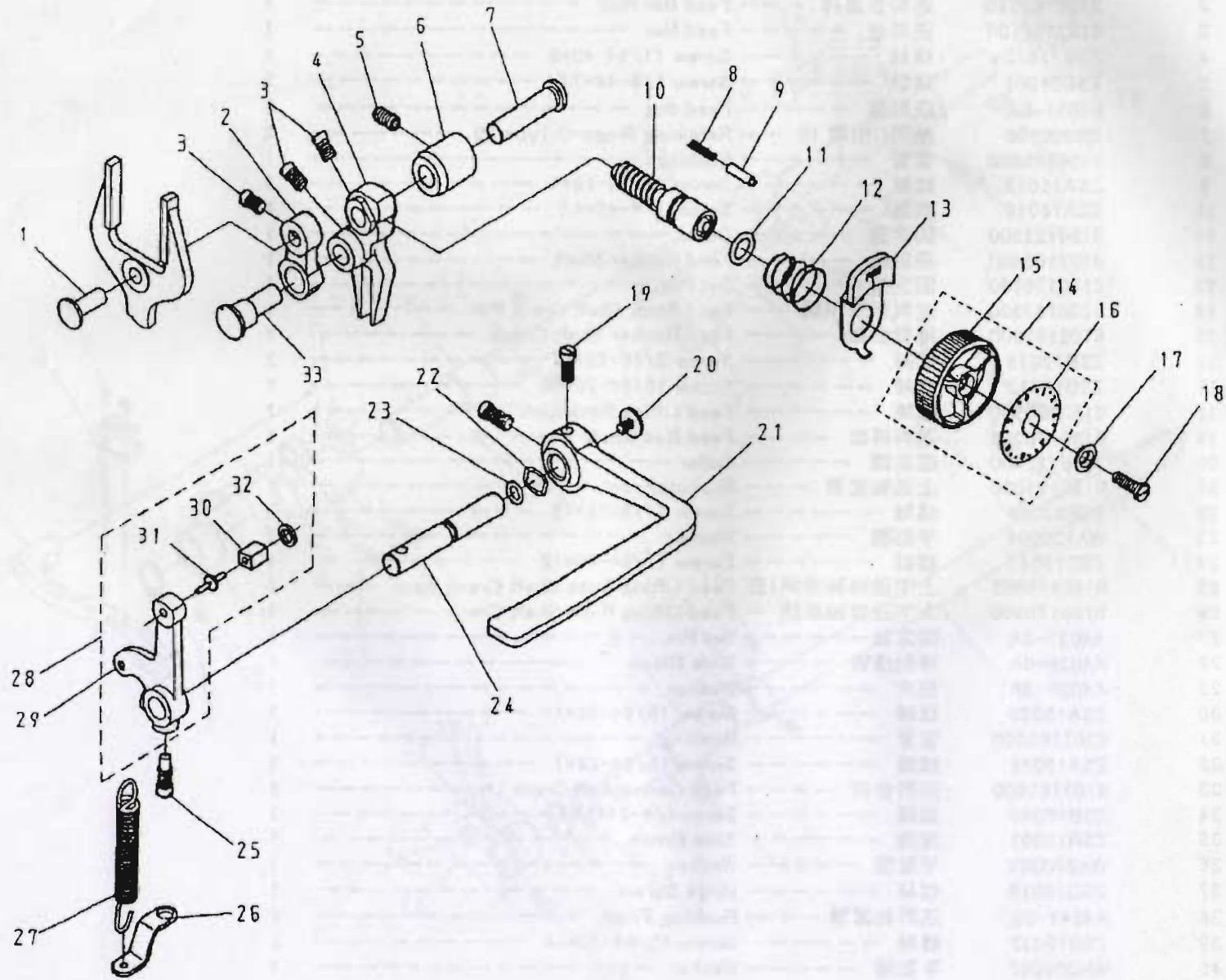
REF.No	NOTE	零件號碼 Part No.	零件名稱	Name of Part	件數 6102	QTY	備註 Remarks
1		ZSF32001	螺絲	Screw	1		
2		ZSN32001	螺帽	Nut	1		
3		E1184-0A	壓縮彈簧	Presser Spring	1		
4		6103150500	押棒提昇器	Presser Bar Guide Bracket	1		
5		E1054-0A	線掛	Thread Guide	1		
6		ZSA15017	螺絲	Screw 15/64-28*8.5	1		
7		ZSB11035	螺絲	Screw 11/64-40*6	1		
8		E1180-0A	押棒	Presser Bar	1		
9		E1183-0A	押棒套管	Presser Bar Bushing	1		
10		E1237-0A	內押脚	Presser foot	1		
11		ZSB08017	螺絲	Screw 9/64-40*8	1		
12		6103150800	押脚提棒	Hand lifter Lever	1		
13		ZSH11004	螺絲	Screw 11/64-40*5	1		
14		6103150700	押棒偏心輪	Hand Lifter Cam	1		
15		5150344000	壓縮滑座A	Thread Releasing Plate A	1		
16		5150344100	壓縮滑座B	Thread Releasing Plate B	1		
17		ZSG15057	螺絲	Hinge Screw	1		
18		ZSB11035	螺絲	Screw 11/64-40*6	1		
19		ZSG12029	螺絲	Hinge Screw	2		
20		5150340400	壓棒提昇桿	Side Connecting Bar	1		
21		ZSG15035	螺絲	Hinge Screw	1		
22		6102340100	押棒上升臂	Presser Bar Lifting Link	1		
23		8230340200	彈簧	Spring	1		
24		EJ4434-2A	螺絲	Spring Hook	1		
25		5150343000	連接桿	Knee Lifter Connecting Rod	1		



F. CS-6102 下部送料關係 LOWER FEED MECHANISM COMPONENTS

REF.No	NOTE	零件號碼 Part No.	零件名稱 Name of Part	件數 6102	QTY	備註 Remarks
1		51501649T0	送料台軸 ----- Feed Bar Shaft -----	1		
2		51501605T0	送料台連桿 ----- Feed Bar Rod -----	1		
3		6102160100	送料台 ----- Feed Bar -----	1		
4		ZSB11012	螺絲 ----- Screw 11/64-40*8 -----	1		
5		ZSB08001	螺絲 ----- Screw 1/8-44*7.5 -----	2		
6		E6051-0A	送料齒 ----- Feed dog -----	1		
7		RB200150	軸用C扣環 15 --- Retaining Rings-C Type 15 -----	2		
8		5150160600	套管 ----- Bushing -----	1		
9		ZSA15013	螺絲 ----- Screw 15/64-28*4 -----	1		
10		ZSA16010	螺絲 ----- Screw 1/4-40*4.5 -----	4		
11		5150122600	固定環 ----- Collar -----	1		
12		6102160400	搖動軸 ----- Feed Rocker Shaft -----	1		
13		5150170700	固定銷 ----- Set Pin -----	1		
14		5150167600	送料軸曲柄銷 --- Feed Rock Shaft Crank Pin -----	1		
15		6102160800	搖動曲軸 ----- Feed Rocker Shaft Crank -----	1		
16		ZSB12015	螺絲 ----- Screw 3/16-28*12 -----	2		
17		ZSB15012	螺絲 ----- Screw 15/64-28*10 -----	1		
18		5150170500	連桿 ----- Feed Lifting Rock Link -----	1		
19		5150170300	送料桿銷 ----- Feed Rod Shaft -----	1		
20		5150122600	固定環 ----- Collar -----	1		
21		5150171000	上送軸套管 --- Bushing Front -----	1		
22		ZSB12015	螺絲 ----- Screw 3/16-28*12 -----	2		
23		WA150006	平墊圈 ----- Washer -----	1		
24		ZSB11017	螺絲 ----- Screw 11/64-40*12 -----	1		
25		5150170805	上下送料軸曲柄(套) Feed Lifting Rock Shaft Crank Asm. -----	1		
26		5150170800	上下送料軸曲柄 --- Feed Lifting Rock Shaft Crank -----	1		
27		A4037-0A	固定軸 ----- Set Pin -----	1		
28		A4038-0A	導引滑塊 ----- Slide Block -----	1		
29		A4039-0A	墊片 ----- Washer -----	1		
30		ZSA15020	螺絲 ----- Screw 15/64-28*11 -----	1		
31		6102160600	套管 ----- Bushing -----	1		
32		ZSA15028	螺絲 ----- Screw 15/64-28*7 -----	1		
33		6103160800	送料台柄 ----- Feed Connection Crank -----	1		
34		ZSB16040	螺絲 ----- Screw 1/4-24*17.5 -----	1		
35		ZSR18003	滑塊 ----- Slide Brock -----	1		
36		WA070008	平墊圈 ----- Washer -----	1		
37		ZSG18019	螺絲 ----- Hinge Screw -----	1		
38		A4041-0B	送料軸套管 --- Bushing Front -----	2		
39		ZSB15032	螺絲 ----- Screw 15/64-28*14 -----	1		
40		WH206002	平墊圈 ----- Washer -----	1		





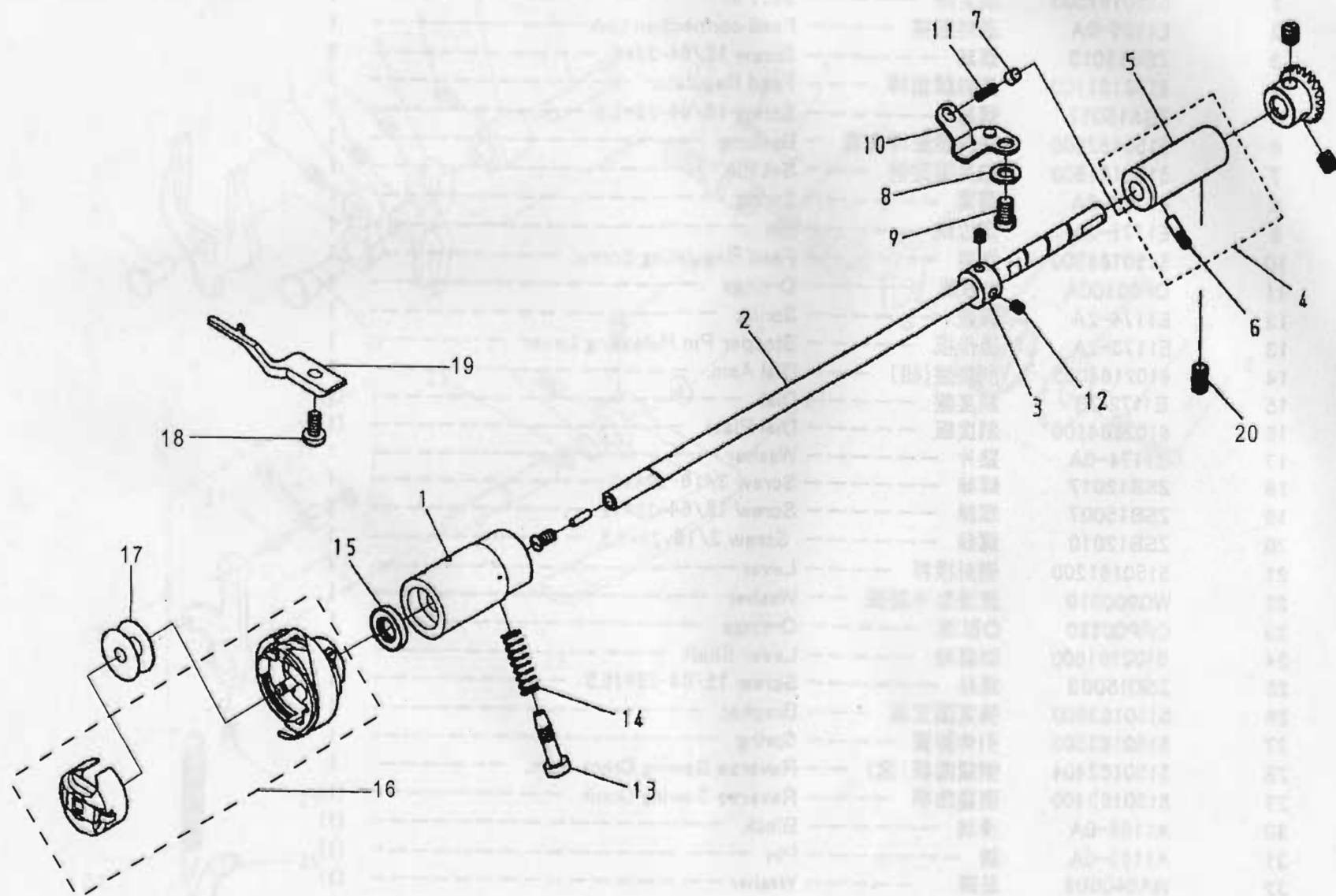
G. CS-6102 縫目調節關係 FEED ADJUSTMENT MECHANISM COMPONENTS

REF.No	NOTE	零件號碼 Part No.	零件名稱	Name of Part	件數 6102	Q'TY	備註 Remarks
1		5150167500	固定銷	Set Pin	1		
2		E1156-0A	送料連桿	Feed connection Link	1		
3		ZSB15013	螺絲	Screw 15/64-28*8	3		
4		6102161100	送料調節桿	Feed Regulator	1		
5		ZSA15017	螺絲	Screw 15/64-28*8.5	1		
6		5150162800	送料調節桿套管	Bushing	1		
7		5150161500	三叉固定銷	Set Pin	1		
8		E1158-0A	彈簧	Spring	1		
9		E1171-2A	定位銷	Pin	1		
10		5150164300	螺桿	Feed Regulating Screw	1		
11		OP00100A	O形環	O-rings	1		
12		E1174-2A	彈簧	Spring	1		
13		E1173-2A	操作板	Stopper Pin Releasing Lever	1		
14		6102164005	刻度盤(組)	Dial Asm.	1		
15		E1172-2B	刻度盤	Dial	(1)		
16		6102164100	刻度板	Dial Plate	(1)		
17		C1174-0A	墊片	Washer	1		
18		ZSB12017	螺絲	Screw 3/16-28*15	1		
19		ZSB15007	螺絲	Screw 15/64-28*12	2		
20		ZSB12010	螺絲	Screw 3/16-28*6.5	1		
21		5150161200	倒針槓桿	Lever	1		
22		WG000010	波浪型平整圈	Washer	1		
23		OPP00680	O形環	O-rings	1		
24		6102161800	倒縫軸	Lever Shaft	1		
25		ZSD15003	螺絲	Screw 15/64-28*16.5	1		
26		5150163600	彈簧固定板	Bracket	1		
27		5150163500	引伸彈簧	Spring	1		
28		5150163404	倒縫曲柄(套)	Reverse Sewing Crank Asm.	1		
29		5150163400	倒縫曲柄	Reverse Sewing Crank	(1)		
30		A1164-0A	滑塊	Block	(1)		
31		A1165-0A	銷	Pin	(1)		
32		WA040009	墊圈	Washer	(1)		
33		E1155-0A	固定銷	Set Pin	1		

H. CS-6102

下轴总成

HOOK DRIVE SHAFT COMPONENTS



H. CS-6102 下軸關係 HOOK DRIVE SHAFT COMPONENTS

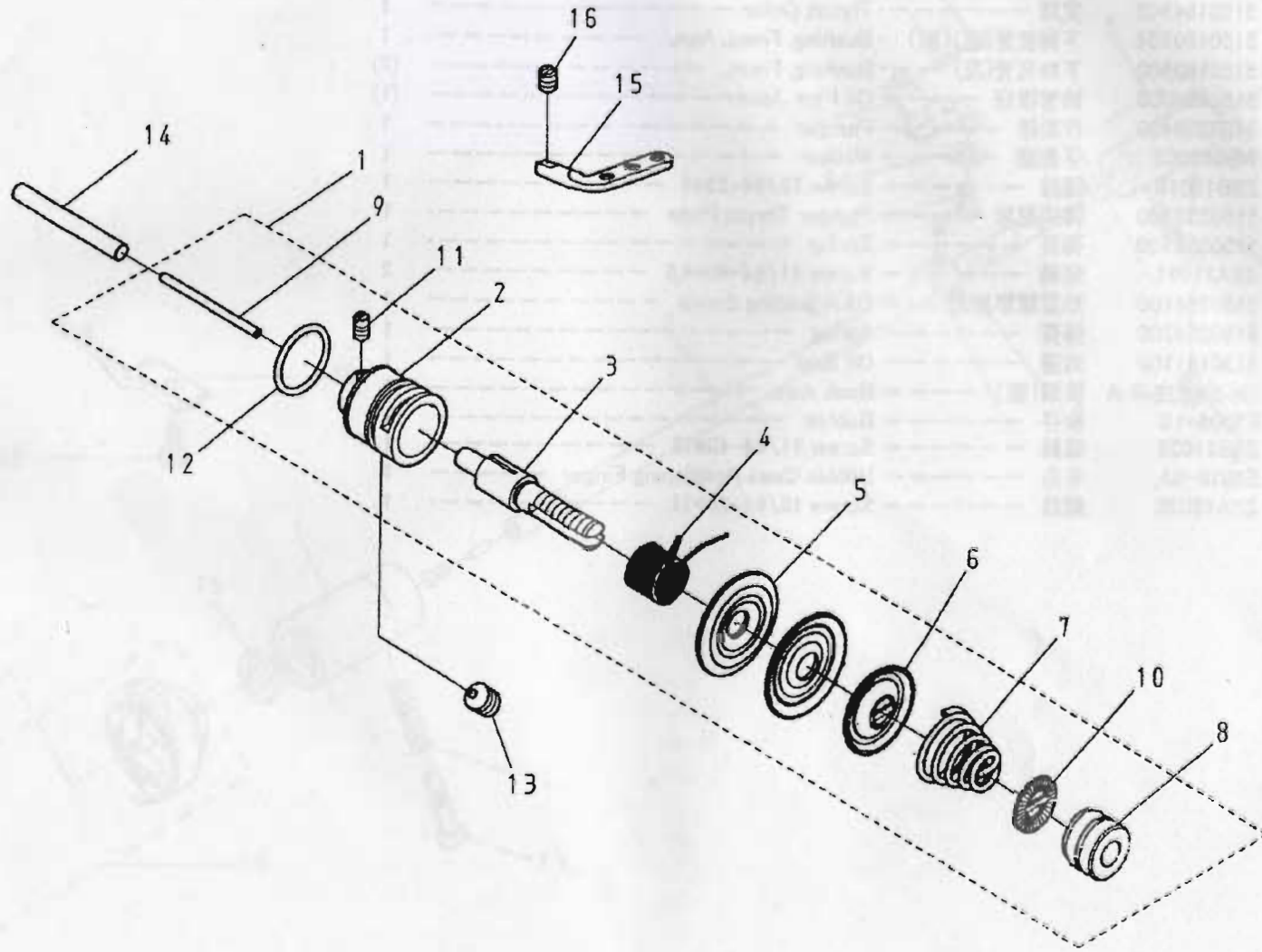
REF.No NOTE	零件號碼 Part No.	零件名稱	Name of Part	件數 Q'TY	備注 Remarks
1	5150180300	下軸套管(左)	Bushing, Front	1	
2	6102180100	下軸	Hook Driving Shaft	1	
3	5150184900	定環	Thrust Collar	1	
4	5150180504	下軸套管(左)(套)	Bushing, Front, Asm.	1	
5	5150180500	下軸套管(左)	Bushing, Front.	(1)	
6	5150354000	油管接頭	Oil Pipe Joint	(1)	
7	5150359400	作動銷	Plunger	1	
8	WB060002	平墊圈	Washer	1	
9	ZSB15019	螺絲	Screw 15/64-28*9	1	
10	5150359300	彈簧壓板	Plunger Thrust Plate	1	
11	5150359500	彈簧	Spring	1	
12	ZSA11011	螺絲	Screw 11/64-40*4.5	2	
13	5150354100	油量調節螺絲	Oil Adjusting Screw	1	
14	5150354700	彈簧	Spring	1	
15	5150181100	油蓋	Oil Seal	1	
16	SH-SKS20-R-A	梭頭(套)	Hook Asm.	1	
17	E7006-1B	梭仔	Bobbin	1	
18	ZSB11026	螺絲	Screw 11/64-40*10	1	
19	E6016-0A	牛角	Bobbin Case Positioning Finger	1	
20	ZSA15020	螺絲	Screw 15/64-28*11	1	

I. CS-6102

縫線壓力調節關係

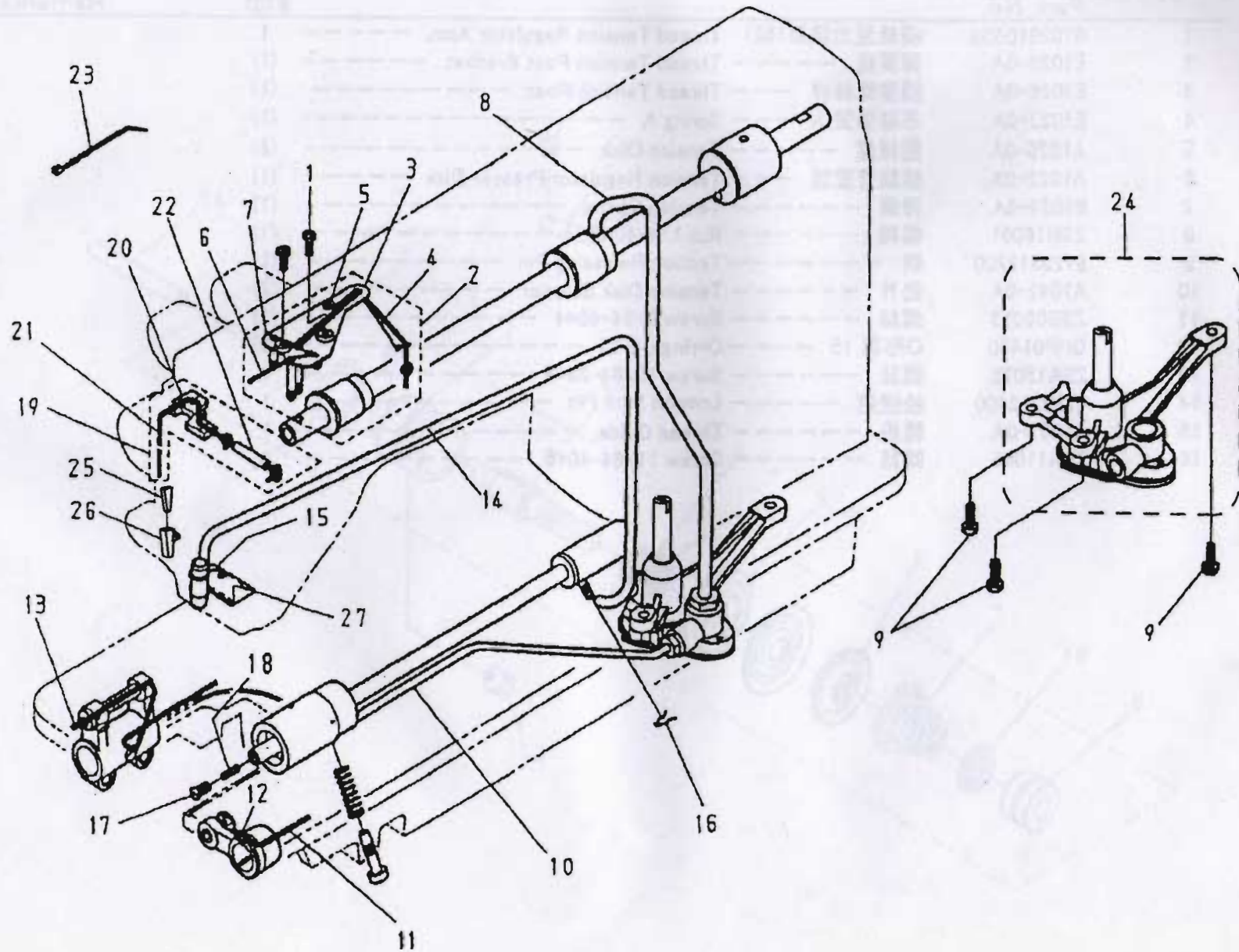
UPPER THREAD TENSION REGULATOR

MECHANISM COMPONENTS



I. CS-6102 縫線壓力調節關係 UPPER THREAD TENSION REGULATOR MECHANISM COMPONENTS

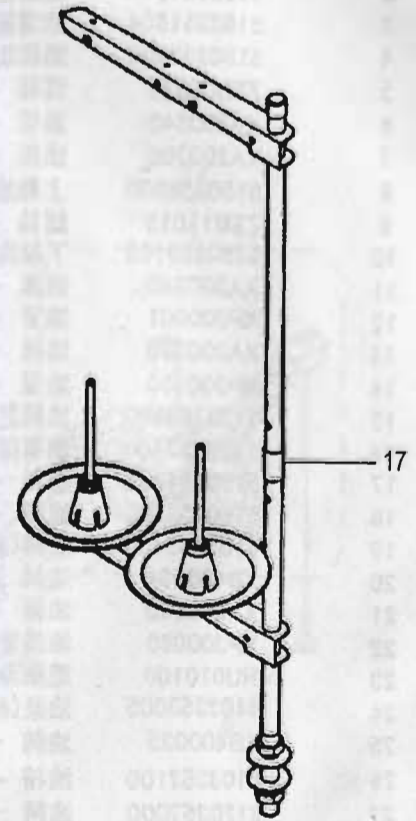
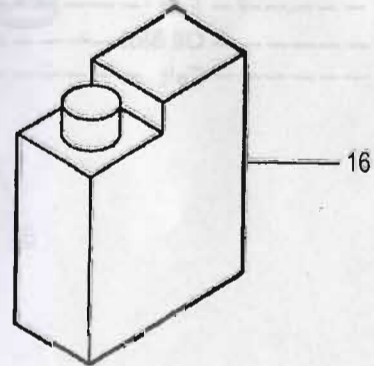
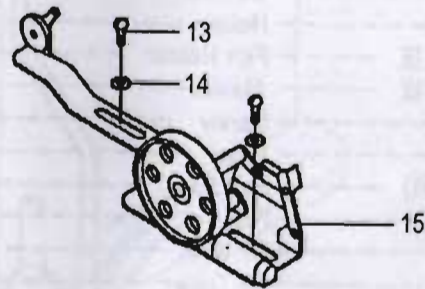
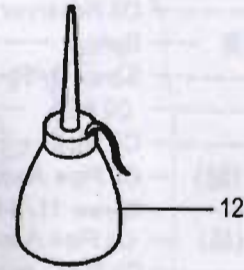
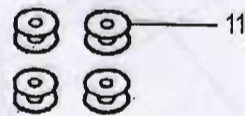
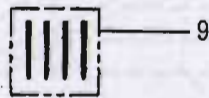
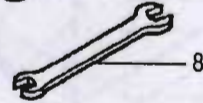
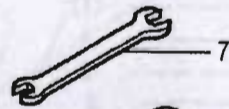
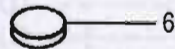
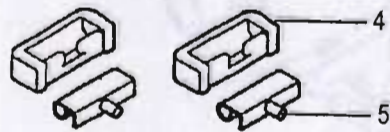
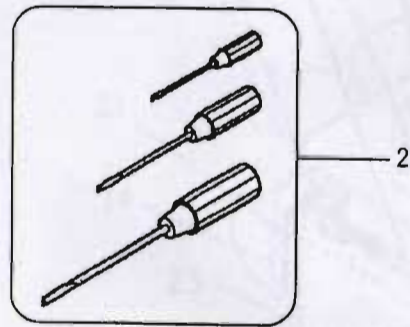
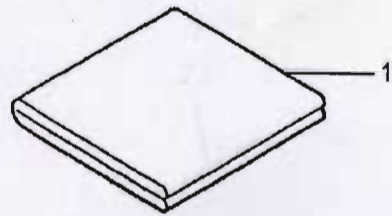
REF.No	NOTE	零件號碼 Part No.	零件名稱	Name of Part	件數 6102	Q'TY	備註 Remarks
1		6102310505	縫線壓力調節(組)	Thread Tension Regulator Asm.	1		
2		E1029-0A	彈簧座	Thread Tension Post Bracket	(1)		
3		E1026-0A	調整螺絲桿	Thread Tension Post	(1)		
4		E1027-0A	吊線彈簧 A	Spring A	(1)		
5		A1025-0A	壓線盤	Tension Disk	(2)		
6		A1022-0A	線調整壓盤	Tension Regulator Presser Disk	(1)		
7		E1021-0A	彈簧	Tension Spring	(1)		
8		ZSN16001	螺帽	Nut 1/4-40	(1)		
9		6120312200	銷	Tention Releasing Pin	(1)		
10		A1042-0A	墊片	Tension Disk Stopper	(1)		
11		ZSB09013	螺絲	Screw 9/64-40*4	(1)		
12		OPP01450	O形環 15	O-rings $\phi$ 15	(1)		
13		ZSA15025	螺絲	Screw 15/64-28*6	1		
14		6120312400	松線銷	Loosen Line Pin	1		
15		A1051-0A	線掛	Thread Guide	1		
16		ZSA11003	螺絲	Screw 11/64-40*5	1		



J. CS-6102 油潤滑關係 OIL LUBRICATION MECHANISM COMPONENTS.

REF.No NOTE	零件號碼 Part No.	零件名稱	Name of Part	件數 Q'TY	備注 Remarks
1	ZSB09034	螺絲	Screw 9/64-40*10	2	
2	5150351505	油溜板	Oil Reserver Plate Asm.	1	
3	5150351504	油溜板	Oil Reserver Plate Com.	(1)	
4	5150352900	油線固定彈簧	Spring	(1)	
5	ZSB09025	螺絲	Screw 9/64-40*5	(1)	
6	XA200340	油線	Oil Wick	(1)	
7	XA200300	油線	Oil Wick	(1)	
8	5150358905	上軸油導管(組)	Oil Pipe Asm.	1	
9	ZSB11019	螺絲	Screw 11/64-40*13	3	
10	5150359105	下軸油導管(組)	Oil Pipe Asm.	1	
11	XA300240	油線	Oil Wick	1	
12	XP300001	油管	Holder	1	
13	XA300330	油線	Oil Wick	1	
14	XP300750	油管	Holder	1	
15	5150353500	油線壓板	Felt Holder	1	
16	5150353400	油管壓板	Holder	1	
17	5150354400	螺絲	Screw	1	
18	5150354500	濾器	Filter	1	
19	6103355400	油線(組)	Felt Asm.	1	
20	XB400034	油線	Felt	(1)	
21	XA200220	油線	Oil Wick	(1)	
22	XP300080	油線管	Oil Tube	(1)	
23	RU010100	尼龍索線帶	Nylon Cable Tie	2	
24	6102358005	油泵(組)	Oil Pump	1	
25	XB400035	油線	Felt	1	
26	6103352100	油槽	Oil Slot	1	
27	6120357000	油線	Felt	1	





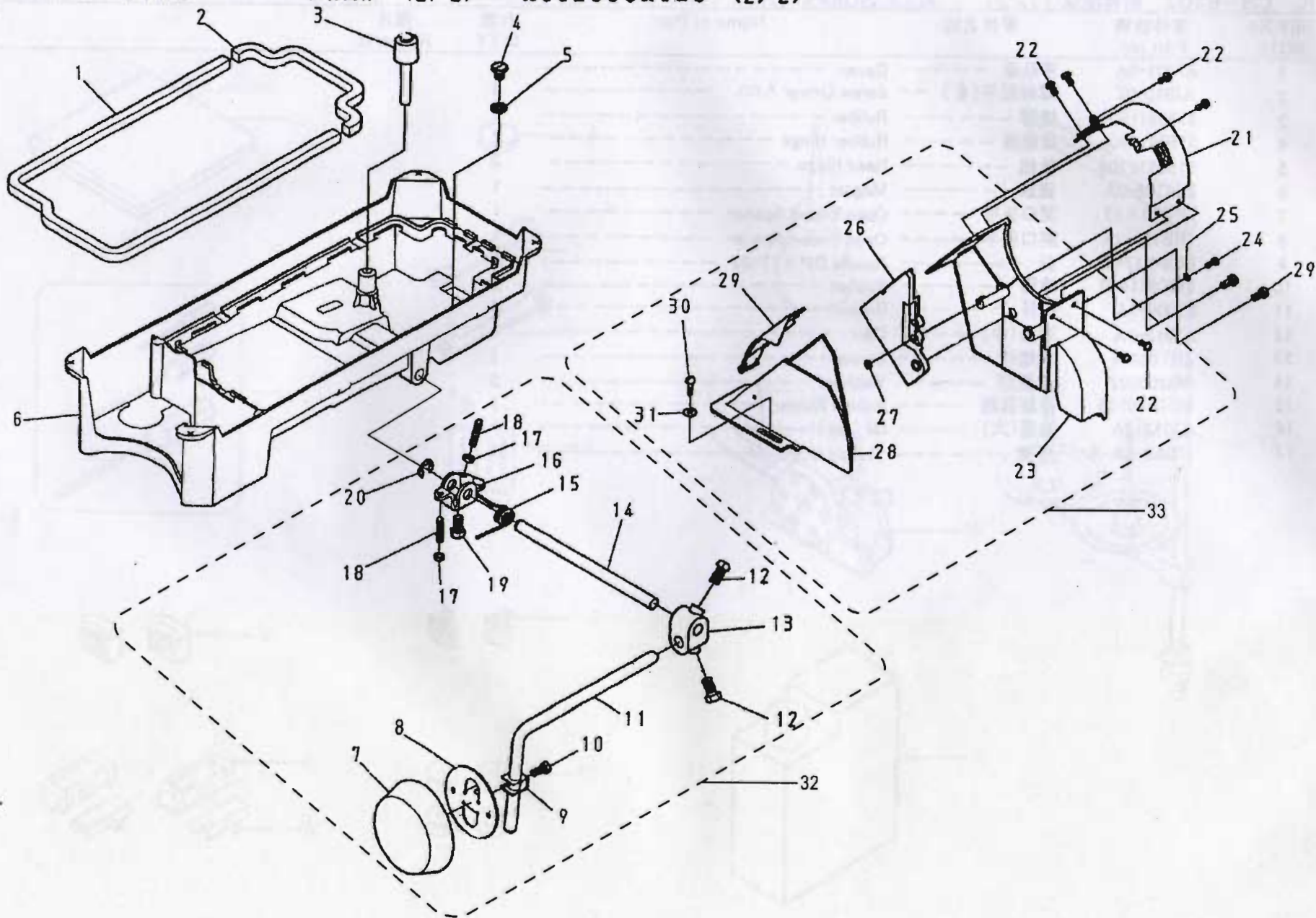
K. CS-6102 附件關係 (1/2) ACCESSORIES (1/2)

REF.No NOTE	零件號碼 Part No.	零件名稱	Name of Part	件數 Q'TY	備注 Remarks
1	A7001-0A	車頭蓋	Cover	1	
2	A7010-0Z	螺絲起子(套)	Screw Driver Asm.	1	
3	5150911500	橡膠	Rubber	2	
4	5150911900	後鈕座	Rubber Hinge	2	
5	5150911700	後鈕	Head Hinge	2	
6	EJ4108-0A	磁鉄	Magnet	1	
7	TRB10 x 12	開口板手	Open Ended Spaner	1	
8	TRB12 x 14	開口板手	Open Ended Spaner	1	
9	INDPX17-22	針	Needle DP x 17-22	4	
10	5150911600	橡膠	Rubber	2	
11	E7006-1A	梭仔	Bobbin	4	
12	A7012-1A	油壺(中)	Oiler	1	
13	ZMT04004	木螺絲	Screw	2	
14	WH205002	平整圈	Washer	2	
15	5150320105	捲線器組	Bobbin Winder	1	
16	A7012-2A	油壺(大)	Oil Can	1	
17	J7050-0A-A	線架	Thread Stand	1	

K. CS-6102

附件關係 (2/2)

ACCESSORIES (2/2)



K. CS-6102 附件關係 (2/2) ACCESSORIES (2/2)

REF.No NOTE	零件號碼 Part No.	零件名稱	Name of Part	件數 Q'TY	備注 Remarks
1	5150350400	油防墊片	Packing	1	
2	5150350500	油防墊片	Packing	1	
3	5150343500	腳押聯桿頭	Knee Press Lifter Rod Asm.	1	
4	ZSE20014	螺絲	Screw 5/16-28*9.3	1	
5	EJ4109-0A	墊圈	Washer	1	
6	6102350100	下油槽	Oil Pan	1	
7	5150345400	腳弓大餅	Knee Guird	1	
8	5150345100	腳弓餅支架	Knee Plate	1	
9	5150345200	固定支架	Retainer	1	
10	ZSD15007	螺絲	Screw 15/64-28*14	1	
11	5150341900	腳押曲桿	Knee Lever Rod	1	
12	ZSD20007	螺絲	Screw 5/16-18*16	2	
13	5150342000	連接器	Knee Lifter Crank	1	
14	5150341400	腳押直桿	Knee Lifter Shaft	1	
15	5150343900	彈簧	Spring	1	
16	5150342900	連接器	Rotating Lever	1	
17	ZSL15002	螺帽	Nut 15/64-28	2	
18	ZSA15038	螺絲	Screw 15/64-28*28	2	
19	ZSB15025	螺絲	Screw 15/64-28*12	1	
20	RE000090	E扣環 9	Retaining Rings- E Type 9	1	
21	6102335100	皮帶蓋 A	Belt Cover A	1	
22	ZSE11003	螺絲	Screw 11/64-40*9.5	6	
23	6102335200	皮帶蓋 B	Belt Cover B	1	
24	ZMB04016	螺絲	Screw M4×0.7*10	1	
25	WA04007	墊圈	Washer	1	
26	51503352B0	皮帶蓋 C	Belt Cover C	1	
27	ZML04006	螺帽	Nut M4X0.7	1	
28	51503358T0	皮帶蓋 D	Belt Cover D	1	
29	51503359T0	皮帶蓋 E	Belt Cover E	1	
30	ZMT05003	木螺絲	Wood Screw	2	
31	WA059003	平墊圈	Washer	2	
32	5150703000	連接器(組)	Knee Lifter Shaft Asm.	1	
33	6102335200	皮帶罩(組)	Belt Cover Asm.	1	

L. CS-6102 零件號碼與頁數對照表(1/3) NUMERICAL PARTS-LIST (1/3)

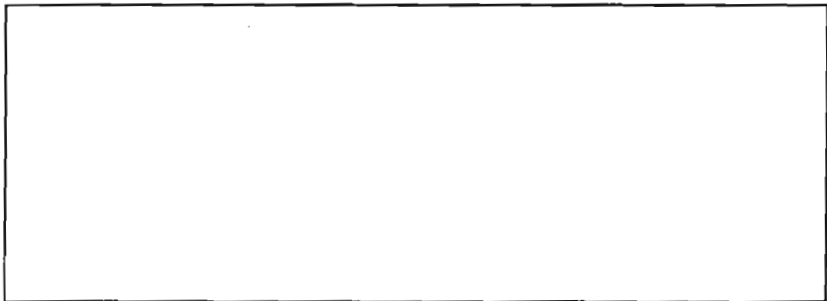
零件號碼 Part No.	頁數 PAGE	零件號碼 Part No.	頁數 PAGE	零件號碼 Part No.	頁數 PAGE	零件號碼 Part No.	頁數 PAGE
5150110700	3- 28	5150180504	19- 4	5150354400	23- 25	6102160600	15- 31
5150120100	5- 3	5150180700	5- 21	5150354500	23- 26	6102160800	15- 15
5150120200	5- 2	5150181100	19- 15	5150354700	19- 14	6102161100	17- 4
515012030Z	4- 5	5150184900	19- 3	5150357005	23- 22	6102164005	17- 14
5150120400	5- 15	5150310105	3- 35	5150358000	23- 9	6102164100	17- 16
5150120500	5- 16	5150311900	3- 38	5150358300	21- 11	6102180100	19- 2
5150120800	5- 29	5150313000	3- 40	5150358500	21- 13	6102310505	21- 1
5150122200	5- 12	5150313100	3- 37	5150358600	21- 15	6102350100	27- 6
5150122600	5- 7	5150313200	3- 39	5150358704	21- 14	6102335100	27- 21
5150122600	15- 11	5150320100	25- 13	5150358905	23- 8	6102335200	27- 33
5150122600	15- 20	51503352B0	27- 26	5150359105	23- 18	6102335200	27- 23
5150132100	5- 25	51503358T0	27- 28	5150359300	19- 10	6102358005	23- 32
5150140400	7- 3	51503359T0	27- 29	5150359400	19- 7	6103142200	12- 20
51501605T0	15- 2	5150340100	13- 22	5150359500	19- 11	6103143202	9- 9
5150160600	15- 8	5150340200	13- 23	5150703000	27- 32	6103143205	9- 8
5150160900	5- 19	5150340400	13- 20	5150911500	25- 3	6103143600	9- 34
5150161200	17- 21	5150341400	27- 14	5150911600	25- 4	6103144301	9- 7
5150161500	17- 7	5150341900	27- 11	5150911700	25- 5	6103144700	9- 31
5150161800	17- 24	5150342000	27- 13	5150911900	25- 6	6103145800	9- 37
5150162800	17- 6	5150342900	27- 16	6100140500	7- 7	6103148200	9- 14
5150163400	17- 29	5150343000	13- 25	6102142100	11- 10	6103150500	13- 4
5150163404	17- 28	5150343500	27- 3	6102148602	9- 11	6102150700	13- 14
5150163500	17- 27	5150343900	27- 15	6100148400	9- 20	6102150800	13- 12
5150163600	17- 26	5150344001	13- 15	6102140100	7- 4	6103160800	15- 33
5150164300	17- 10	5150344100	13- 16	6102111000	3- 1	6103312500	19- 14
51501649T0	15- 1	5150345100	27- 8	6102111100	3- 15	6103355400	23- 27
5150167500	17- 1	5150345200	27- 9	6102111200	3- 42	6120140700	7- 8
5150167600	15- 14	5150345400	27- 7	6102111300	3- 26	6120142201	11- 8
5150170100	5- 20	5150350400	27- 1	6102114300	3- 16	6120142300	11- 1
5150170300	15- 19	5150350500	27- 2	6102122000	5- 11	6120142400	11- 14
5150170500	15- 18	5150351504	23- 3	6102122005	5- 10	6120144106	9- 6
5150170700	15- 13	5150351505	23- 2	6102122300	5- 18	6120144201	9- 5
5150170800	15- 26	5150352900	23- 4	6102132000	5- 24	6120148500	9- 12
5150170805	15- 25	5150353400	23- 24	6102142000	11- 16	6120148600	9- 11
5150171000	15- 21	5150353500	23- 23	6102144000	9- 3	6120312200	21- 9
5150180300	19- 1	5150354000	19- 6	6102160100	15- 3	A1013-1B	3- 4
5150180500	19- 5	5150354100	19- 13	6102160400	15- 12	A1022-0A	21- 6

L. GS-6102 零件號碼與頁數對照表(2/3) NUMERICAL PARTS-LIST (2/3)

零件號碼 Part No.	頁數 PAGE	零件號碼 Part No.	頁數 PAGE	零件號碼 Part No.	頁數 PAGE	零件號碼 Part No.	頁數 PAGE
A1051-0A	21- 15	E1171-2A	17- 9	EJ4434-2A	13- 24	XA200220	23- 29
A1055-0A	3- 32	E1174-2A	17- 12	INDPX17-22	25- 12	XA200300	23- 7
A1074-0A	7- 5	E1172-2A	17- 15	INDPX17-22	7- 9	XA200340	23- 6
A1077-0A	7- 1	E1173-2A	17- 13	OP00100A	17- 11	XA300004	9- 15
A1082-0A	7- 18	E1180-0A	13- 8	OPP00680	17- 23	XA300240	23- 19
A1113-0A	5- 23	E1183-0A	13- 9	OPP01080	11- 19	XA300330	23- 21
A1164-0A	17- 30	E1184-0A	13- 3	OPP01450	21- 12	XB108002	7- 2
A1165-0A	17- 31	E1235-0A	9- 23	OPP02550	3- 19	XB400034	23- 28
A4037-0A	15- 27	E1237-0A	13- 10	RB200150	15- 7	XP300001	23- 20
A4038-0A	15- 28	E1283-0A	9- 35	RB200200	5- 13	XP500023	23- 30
A4039-0A	15- 29	E1284-0A	9- 36	RB200250	3- 33	YD030006	9- 10
A4041-0A	15- 38	E1287-0A	9- 25	RE000030	3- 41	YD030006	9- 39
A7000-0A	25- 2	E1287-1A	9- 18	RE000090	27- 20	ZMB04016	27- 24
A7001-0A	25- 14	E1291-0A	9- 29	RU010100	23- 31	ZMG06003	3- 36
A7010-0A	25- 9	E1297-0A	3- 32	SEN0570700	3- 12	ZML04006	27- 27
A7010-1A	25- 10	E1298-0A	3- 34	SEN0741070	5- 1	ZML06001	9- 33
A7010-2A	25- 11	E1432-1A	11- 3	SEN0880750	3- 11	ZMT04004	25- 8
A7012-1A	25- 15	E1433-0A	11- 5	SEN1180550	3- 9	ZMT05003	27- 30
C1174-0A	17- 17	E1434-1A	11- 4	SEN1900700	3- 10	ZSA11003	21- 16
E1021-0A	21- 7	E1435-0A	9- 16	SEN1900700	3- 13	ZSA11005	11- 9
E1026-0A	21- 3	E3500-0A	9- 28	SEN1960420	3- 20	ZSA11005	11- 13
E1027-0A	21- 4	E4044-0A	11- 11	SEN2701050	3- 21	ZSA11007	9- 30
E1029-0A	21- 2	E4080-0A	3- 22	SEN3100900	3- 14	ZSA11011	19- 12
E1052-0A	3- 34	E4084-0A	3- 23	TRD10×14	25- 17	ZSA15005	7- 12
E1053-0A	3- 5	E4085-0A	3- 24	WA04007	27- 25	ZSA15013	15- 9
E1054-0A	13- 5	E4086-0A	3- 30	WA059003	27- 31	ZSA15017	13- 6
E1061-0A	7- 11	E6016-0A	19- 20	WA069001	11- 7	ZSA15020	5- 4
E1063-0A	3- 7	E6050-0A	3- 26	WA069011	3- 37	ZSA15020	5- 14
E1064-0A	7- 13	E6051-0A	15- 6	WA079003	15- 36	ZSA15020	15- 30
E1065-1A	7- 14	E6100-1A	19- 16	WA150006	15- 23	ZSA15020	17- 5
E1066-2A	7- 15	E6105-1A	19- 18	WB031001	9- 21	ZSA15020	19- 21
E1067-0A	7- 16	E7006-1A	19- 17	WB031001	23- 16	ZSA15022	5- 27
E1076-0A	7- 8	E7006-1A	25- 16	WB060002	3- 29	ZSA15025	21- 13
E1081-0A	7- 19	EH1371-0A	3- 18	WB060002	19- 8	ZSA15028	15- 32
E1155-0A	17- 32	EH7012-0A	25- 18	WG000010	17- 22	ZSA15038	27- 18
E1156-0A	17- 2	EJ4108-0A	25- 1	WH205002	25- 7	ZSA16010	5- 6
E1158-0A	17- 8	EJ4109-0A	27- 5	WH206002	15- 40	ZSA16010	5- 31

L. CS-6102 零件號碼與頁數對照表(3/3) NUMERICAL PARTS-LIST (3/3)

零件號碼 Part No.	頁數 PAGE	零件號碼 Part No.	頁數 PAGE	零件號碼 Part No.	頁數 PAGE	零件號碼 Part No.	頁數 PAGE
ZSA16010	11-12	ZSB15007	17-19	ZSL18002	9-2		
ZSA16010	15-10	ZSB15012	15-17	ZSN16001	21-8		
ZSA16011	5-8	ZSB15013	17-3	ZSN32001	13-2		
ZSB06004	3-25	ZSB15014	11-2	ZSR18003	15-35		
ZSB08001	15-5	ZSB15014	11-15				
ZSB08004	23-12	ZSB15015	17-25				
ZSB08010	7-10	ZSB15019	19-9				
ZSB08016	23-17	ZSB15025	5-17				
ZSB09013	21-11	ZSB15032	15-39				
ZSB09016	3-6	ZSB15025	27-19				
ZSB09016	3-33	ZSB16005	15-34				
ZSB09017	9-24	ZSB18002	5-30				
ZSB09017	13-11	ZSB18009	5-28				
ZSB09019	7-6	ZSB20014	27-4				
ZSB09022	9-22	ZSC11016	3-27				
ZSB09025	23-5	ZSD15007	27-10				
ZSB09034	23-1	ZSD16009	9-32				
ZSB11012	3-17	ZSD20007	27-12				
ZSB11012	15-4	ZSE11003	27-22				
ZSB11015	9-4	ZSF18001	9-1				
ZSB11017	9-13	ZSF32001	13-1				
ZSB11017	15-24	ZSG11030	3-36				
ZSB11019	23-10	ZSG12029	13-19				
ZSB11021	3-8	ZSG15035	13-21				
ZSB11021	3-31	ZSG15057	13-17				
ZSB11023	3-2	ZSG16002	9-19				
ZSB11024	7-20	ZSG16002	9-26				
ZSB11024	9-38	ZSG16035	9-40				
ZSB11026	19-19	ZSG18019	15-37				
ZSB11035	13-7	ZSH11004	13-13				
ZSB11035	13-18	ZSH15002	9-17				
ZSB11083	3-3	ZSH16001	3-35				
ZSB12010	17-20	ZSK09001	7-17				
ZSB12011	9-27	ZSK18031	11-17				
ZSB12015	15-16	ZSL15002	27-17				
ZSB12015	15-22	ZSL16003	11-6				
ZSB12017	17-18	ZSL18001	11-18				



金輪牌 GOLDEN WHEEL  
CHEE SIANG INDUSTRIAL CO.,LTD

No.32,Wu Chuan 7th Road, Wu Ku Industrial Area,  
Wu Ku Hsiang 24248, Taipei Hsien, Taiwan  
Tel:886-2-22999518 Fax:886-2-22999519

No.6105H01

※Appear and specification listed in this instruction manual are subjected to change without notice.

※This parts list is edited and printed in accordance with the product specifications as of October 2003.

2003.10 Printed in Taiwan